

# OpenStreetMap's worldview

Handling disputes on a map that anyone can edit

[[User:mxn|Minh Nguyễn]], Mapbox  
WikiConference North America 2018



“It’s the Wikipedia of \_\_\_\_\_”

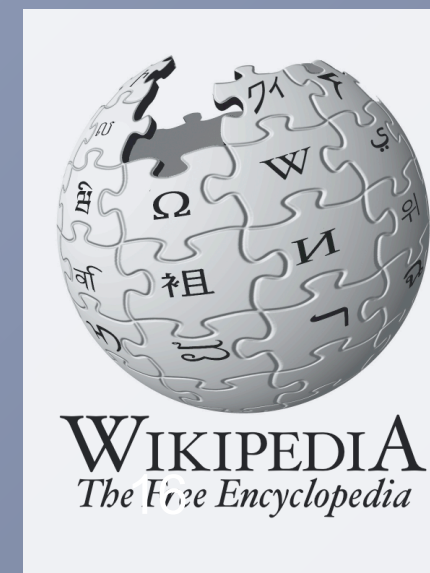
“It’s the Wikipedia of encyclopedias!”

“It’s the Wikipedia of maps!”

**Worldwide  
Hyperlocal  
Free and open**

## 7. Free the Maps!

- “What could be more public domain than basic information about location on the planet?” - Stefan Magdalinski
- FreeGIS software, Free GeoData
- This will become increasingly important for open competition in mobile data services



Jimmy Wales, “Ten Things That Will Be Free”  
Wikimania 2005



# New York City

[ [edit](#) | [edit source](#) ]

Coordinates: 40°42′46″N 74°00′21″W﻿ / ﻿﻿ / ﻿

A ***B-class*** article from Wikipedia, the free encyclopedia. A *former* featured article.

*"NYC" and "New York, New York" redirect here. For other uses, see [New York City \(disambiguation\)](#); [NYC \(disambiguation\)](#); and [New York, New York \(disambiguation\)](#).*

The **City of New York**, often called **New York City** (**NYC**) or simply **New York** (**NY**), is the [most populous city](#) in the [United States](#).<sup>[9]</sup> With an estimated 2017 population of 8,622,698<sup>[7]</sup> distributed over a land area of about 302.6 square miles (784 km<sup>2</sup>),<sup>[10][11]</sup> New York City is also the [most densely populated](#) major city in the United States.<sup>[12]</sup> Located at the southern tip of the [state](#) of [New York](#), the city is the center of the [New York metropolitan area](#), the largest [metropolitan area](#) in the world by [urban landmass](#)<sup>[13]</sup> and one of the world's most populous [megacities](#),<sup>[14][15]</sup> with an estimated 20,320,876 people in its 2017 [Metropolitan Statistical Area](#) and 23,876,155 residents in its [Combined Statistical Area](#).<sup>[4][5]</sup> A [global power city](#),<sup>[16]</sup> New York City has been described uniquely<sup>[17]</sup> as the [cultural](#),<sup>[18][19][20][21]</sup> [financial](#),<sup>[22][23]</sup> and [media](#) capital of the world,<sup>[24][25]</sup> and exerts a significant impact upon commerce,<sup>[23]</sup> [entertainment](#), [research](#), technology, education, politics, tourism, art, fashion, and sports. The city's fast pace<sup>[26][27]</sup> has inspired the term *[New York minute](#)*.<sup>[28]</sup> Home to the [headquarters of the United Nations](#),<sup>[29]</sup> New York is an important center for [international diplomacy](#).<sup>[30][31]</sup>

Situated on [one of the world's largest natural harbors](#),<sup>[32][33]</sup> New York City consists of five [boroughs](#), each of which is a separate [county of the State of New York](#).<sup>[34]</sup> The five boroughs – [Brooklyn](#), [Queens](#), [Manhattan](#), [The Bronx](#), and [Staten Island](#) – were consolidated into a single city in 1898.<sup>[35]</sup> The city and its metropolitan area constitute the premier gateway for legal [immigration to the United States](#).<sup>[36]</sup> As many as 800 languages are spoken in New York,<sup>[37][38][39]</sup> making it the most linguistically diverse city in the world.<sup>[38][40][41]</sup> New York City is home to more than 3.2 million residents born outside the United States,<sup>[42]</sup> the largest [foreign-born population](#) of any city in the world.<sup>[43]</sup> In 2017, the New York metropolitan area produced a [gross metropolitan product \(GMP\)](#) of US\$1.73 trillion.<sup>[44]</sup> If greater New York City were a [sovereign state](#), it would have the [12th highest GDP](#) in the world.<sup>[45]</sup>

New York City traces its origins to a trading post founded by colonists from the [Dutch Republic](#) in 1624 on [Lower Manhattan](#); the post was named [New Amsterdam](#) in 1626.<sup>[46]</sup> The city and its surroundings came under English control in 1664<sup>[46]</sup> and were renamed *New York* after King [Charles II of England](#) granted the lands to

## New York City

### City

### City of New York



Clockwise, from top: [Midtown Manhattan](#), [Times Square](#), the [Unisphere](#), the [Brooklyn Bridge](#), [Lower Manhattan](#) with [One](#)

[Main page](#)

[Contents](#)

[Featured content](#)

[Current events](#)

[Random article](#)

[Donate to Wikipedia](#)

[Wikipedia store](#)

Interaction

[Help](#)

[About Wikipedia](#)

[Community portal](#)

[Recent changes](#)

[Contact page](#)

Tools

[What links here](#)

[Related changes](#)

[Upload file](#)

[Special pages](#)

[Permanent link](#)

[Page information](#)

[Wikidata item](#)

[Cite this page](#)

Print/export

[Create a book](#)

[Download as PDF](#)

[Printable version](#)



[Italiano](#)

[ქართული](#)

[Русский](#)

★ [Tiếng Việt](#)

[中文](#)

🗺 217 more

[Edit links](#)

world's "heart"<sup>[64]</sup> and its "Crossroads",<sup>[64]</sup> is the brightly illuminated hub of the [Broadway Theater District](#),<sup>[66]</sup> one of the world's busiest [pedestrian intersections](#),<sup>[64][65]</sup> and a major center of the world's [entertainment industry](#).<sup>[66]</sup> The names of many of the city's landmarks, [skyscrapers](#),<sup>[67]</sup> and [parks](#) are known around the world. Manhattan's [real estate](#) market is among the most expensive in the world.<sup>[68][69]</sup> New York is home to the largest [ethnic Chinese](#) population outside of [Asia](#),<sup>[70][71]</sup> with multiple signature [Chinatowns](#) developing across the city.<sup>[72][73][74]</sup> Providing continuous 24/7 service,<sup>[75]</sup> the [New York City Subway](#) is the largest single-operator [rapid transit](#) system worldwide, with 472 [rail stations](#).<sup>[76][77][78]</sup> Over 120 colleges and universities are located in New York City, including [Columbia University](#), [New York University](#), and [Rockefeller University](#), which have been ranked among the top universities in the world.<sup>[79][80]</sup> Anchored by [Wall Street](#) in the [Financial District](#) of Lower Manhattan, it has been called both the most economically powerful city and the leading financial center of the world,<sup>[23][81][82][83]</sup> and the city is home to the world's two [largest stock exchanges](#) by total [market capitalization](#), the [New York Stock Exchange](#) and [NASDAQ](#).<sup>[84][85]</sup>

## Contents [\[hide\]](#)

### 1 [History](#)

[1.1 Etymology](#)

[1.2 Early history](#)

[1.3 Dutch rule](#)

[1.4 English rule](#)

[1.5 American Revolution](#)

[1.6 Nineteenth century](#)

[1.7 Modern history](#)

### 2 [Geography](#)

[2.1 Cityscapes](#)

[2.2 Architecture](#)

[2.3 Boroughs](#)

[2.4 Climate](#)

[2.5 Parks](#)

[2.5.1 National parks](#)

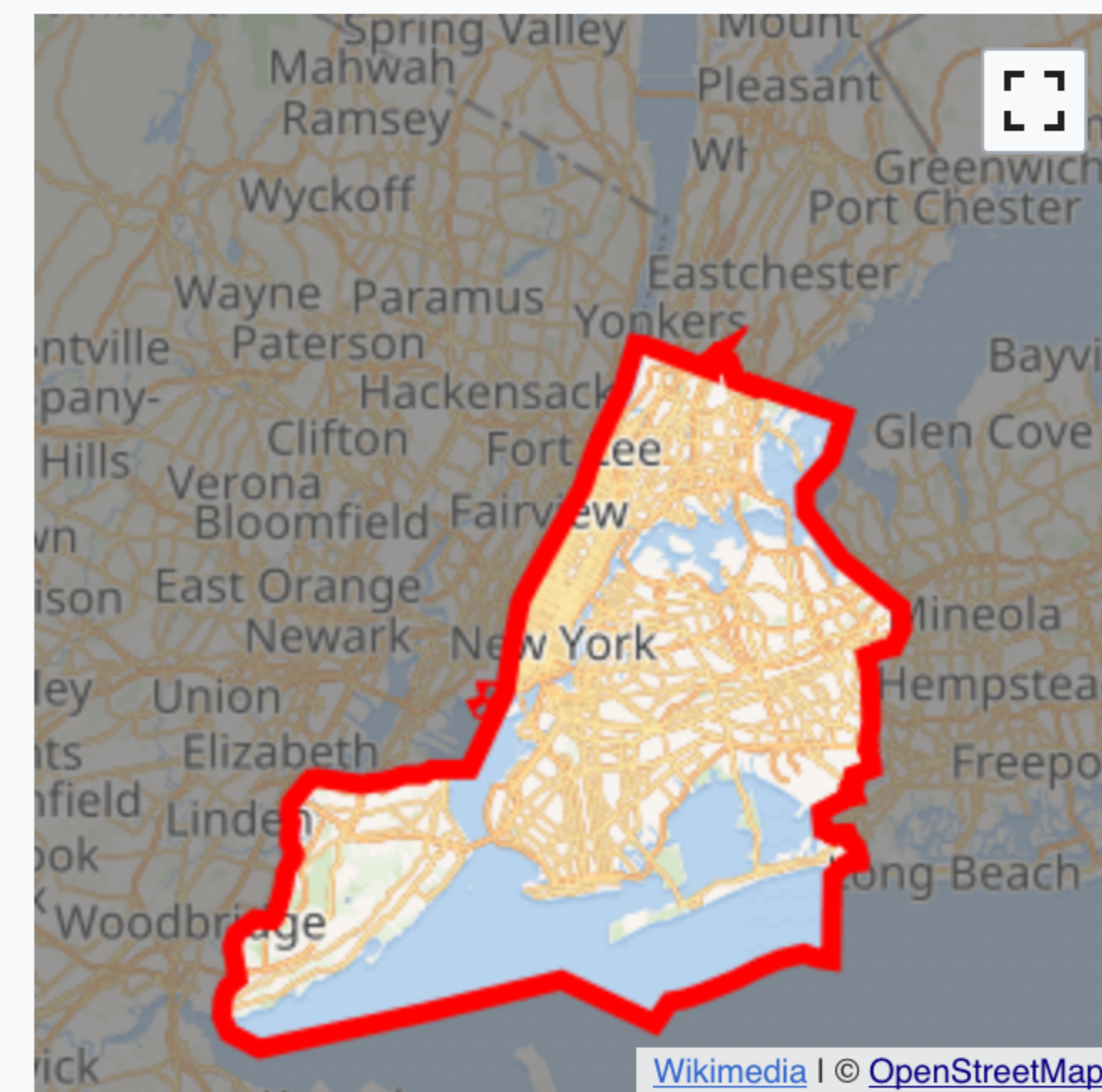
[2.5.2 State parks](#)

[2.5.3 City parks](#)

[2.6 Military installations](#)

### 3 [Demographics](#)

Nickname(s): See [Nicknames of New York City](#)



Interactive map of New York City



Location within the State of New York

- Show map of New York
- Show map of the US
- Show map of North America
- Show map of Earth
- Show all

Coordinates: [40°42′46″N 74°00′21″W](#)<sup>[1]</sup>

© [Wikipedia contributors](#), CC BY-SA 3.0

Map data © [OSM contributors](#), ODbL

# Ohio Union [ edit | edit source ]

A *stub-class* article from Wikipedia, the free encyclopedia

Coordinates:  [39.998361°N 83.00776°W](#)

- [Main page](#)
- [Contents](#)
- [Featured content](#)
- [Current events](#)
- [Random article](#)
- [Donate to Wikipedia](#)
- [Wikipedia store](#)

Interaction

- [Help](#)
- [About Wikipedia](#)
- [Community portal](#)
- [Recent changes](#)
- [Contact page](#)

Tools

- [What links here](#)
- [Related changes](#)
- [Upload file](#)
- [Special pages](#)
- [Permanent link](#)
- [Page information](#)
- [Wikidata item](#)
- [Cite this page](#)

Print/export

- [Create a book](#)
- [Download as PDF](#)
- [Printable version](#)

In other projects

[Wikimedia Commons](#)



This article **needs additional citations for [verification](#)**. Please help [improve this article](#) by [adding citations to reliable sources](#). Unsourced material may be challenged and removed. *(November 2015)* ([Learn how and when to remove this template message](#))



This article may **require [cleanup](#)** to meet Wikipedia's [quality standards](#). The specific problem is: **this article contains grammatical errors and poor sentence structure** Please help [improve this article](#) if you can. *(January 2014)* ([Learn how and when to remove this template message](#))

The **Ohio Union** serves as a student activity center for students of [The Ohio State University](#). When the Union was established in 1910, it was the first [student union](#) at a public university.<sup>[2]</sup> The Ohio Union provides facilities for student activities, organizations/events, and campus and community interaction. Many student services and programs are housed in the union, along with dining and recreational facilities. It also serves as the home base for the D-Tix program, which provides discounted tickets to students. On March 29, 2010, the current Ohio Union was opened to the public.<sup>[3]</sup>

## Contents [hide]

- [1 History](#)
  - [1.1 Enarson Hall \(1910–1951\)](#)
  - [1.2 Pomerene Hall \(1922–1951\)](#)
  - [1.3 The first co-ed Ohio Union \(1951–2007\)](#)
- [2 The New Union](#)
- [3 Directors of the Ohio Union](#)
- [4 Gallery](#)
- [5 References](#)
- [6 External links](#)

## History [ edit | edit source ]

### Enarson Hall (1910–1951) [ edit | edit source ]

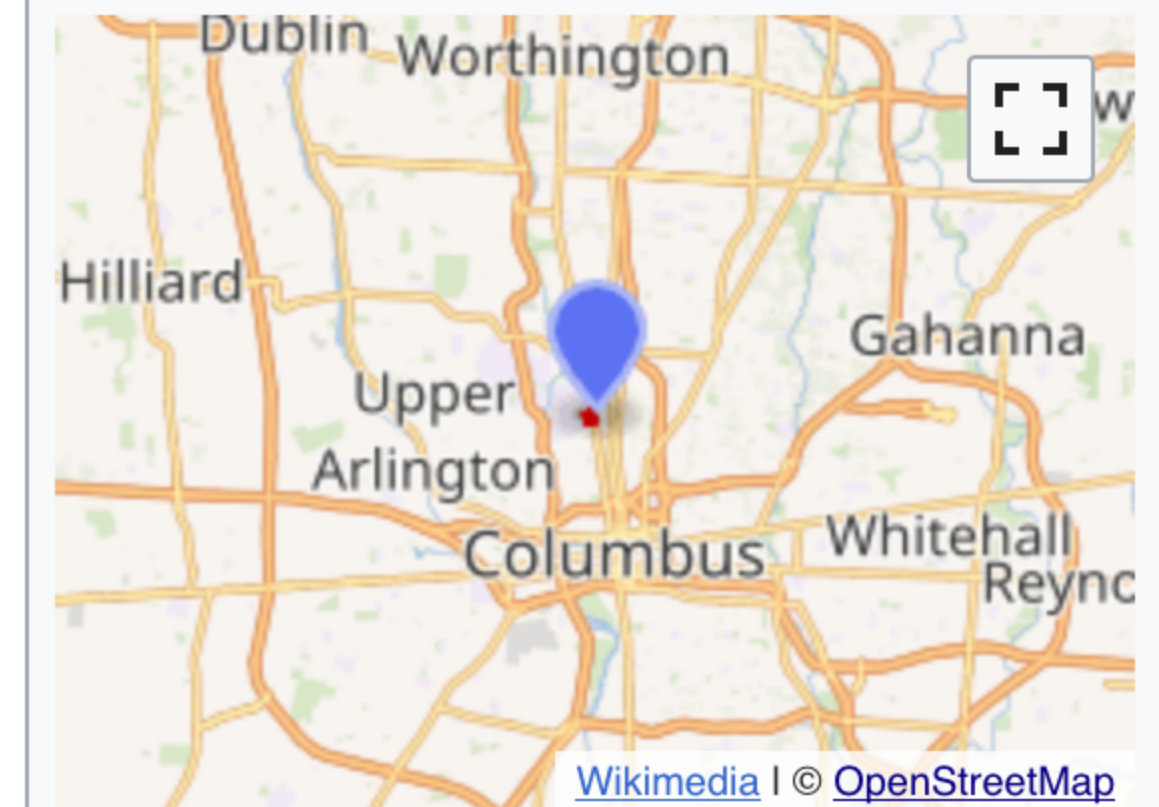
© [Wikipedia contributors](#), CC BY-SA 3.0

Map data © [OSM contributors](#), ODbL

## Ohio Union



The Ohio Union



Wikimedia | © [OpenStreetMap](#)

**[[WP:LAME]]**

Gdańsk



Danzig

**Neutral point of view  
(NPOV)**

*De facto*



*De jure*

**[[WP:COMMONNAME]]**



WIKIPEDIA The Free Encyclopedia

- Main page
- Contents
- Featured content
- Current events
- Random article
- Donate to Wikipedia
- Wikipedia store
- Interaction
- Help
- About Wikipedia
- Community portal
- Recent changes
- Contact page
- Tools
- What links here
- Related changes
- Upload file
- Special pages
- Permanent link
- Page information
- Wikidata item
- Cite this page
- Print/export

Article [Talk](#)

Read [Edit](#) [Edit source](#) [View history](#) [☆](#) [More](#) ▼

# Gdańsk [[edit](#) | [edit source](#)]

© [Wikipedia contributors](#), CC BY-SA 3.0

A *C-class* article from Wikipedia, the free encyclopedia

Coordinates: 54°22′N 18°38′E﻿ / ﻿

*This article is about the city in Poland. For other uses, see [Gdańsk \(disambiguation\)](#).  
"Danzig" redirects here. For other uses, see [Danzig \(disambiguation\)](#).*

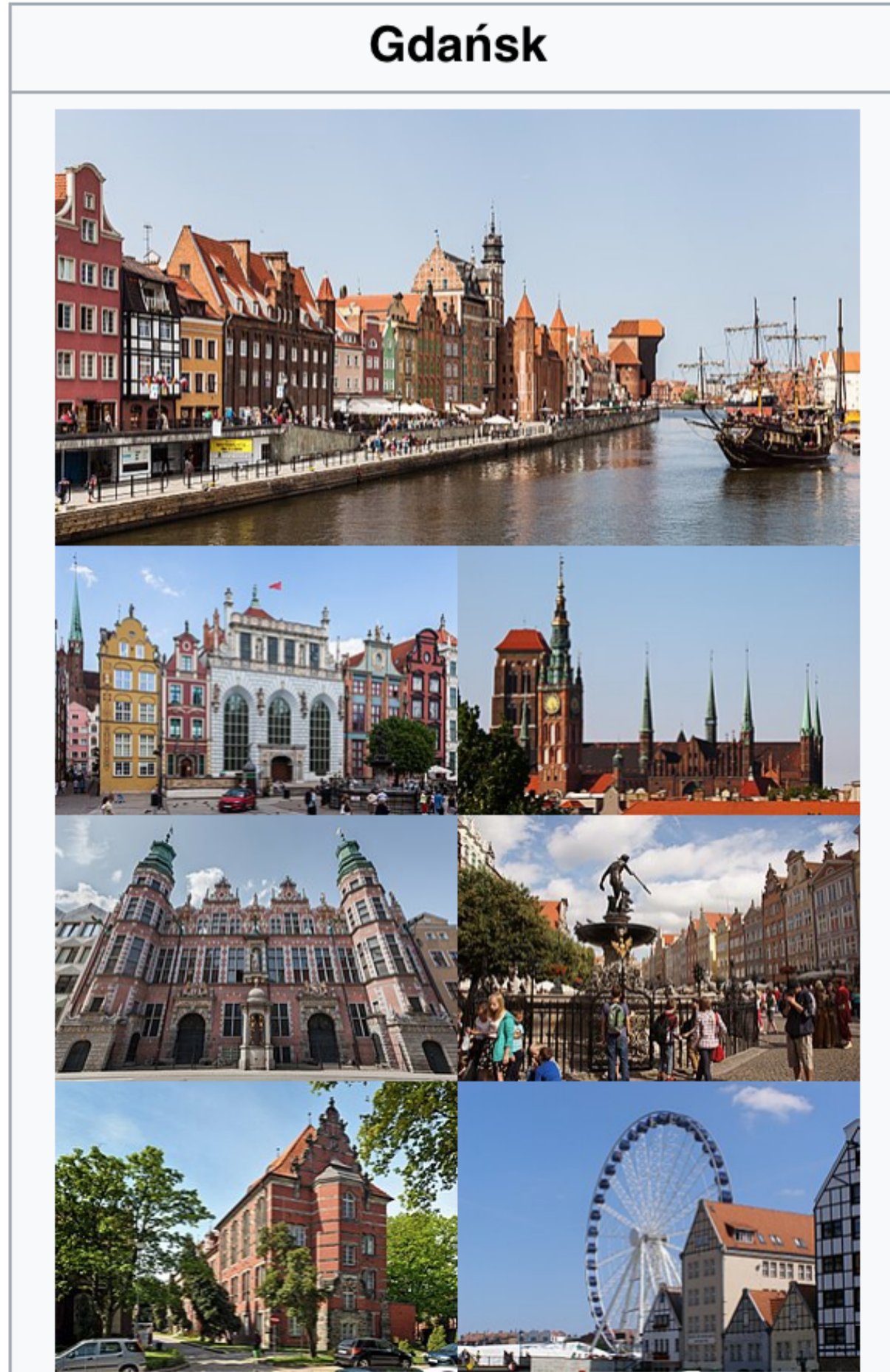
**Gdańsk** (/ɡəˈdɑːnsk, ɡəˈdænsk/; <sup>[1]</sup> Polish: [ɡdaɲsk] <sup>(ⓘ)</sup> <sup>(ⓘ)</sup> [listen](#)); [German](#): *Danzig* <sup>[</sup>ˈdantsɪç] <sup>(ⓘ)</sup> <sup>(ⓘ)</sup> [listen](#))) is a [Polish](#) city on the [Baltic](#) coast. It is the capital of the [Pomeranian Voivodeship](#) and the capital of [Kashubia](#), Poland's principal [seaport](#) and the centre of the country's fourth-largest [metropolitan area](#).<sup>[2]</sup>

The city lies on the southern edge of [Gdańsk Bay](#) (of the [Baltic Sea](#)), in a [conurbation](#) with the city of [Gdynia](#), [spa town](#) of [Sopot](#), and suburban communities, which together form a metropolitan area called the [Tricity](#) (*Trójmiasto*), with a population approaching 1.4 million. Gdańsk itself has a population of 460,427 (December 2012), making it the largest city in the [Pomerania](#) region of Northern Poland.

Gdańsk is the capital of [Gdańsk Pomerania](#) and the largest city of [Kashubia](#). With its origins as a Polish stronghold erected in the 980s by [Mieszko I of Poland](#), the city's history is complex, with periods of Polish rule, periods of [Prussian](#) or [German](#) rule, and periods of autonomy or self-rule as a "[free city](#)". In the early-modern age Gdańsk was a [royal city of Poland](#). It was considered the wealthiest and the largest city of Poland, prior to the 18th century rapid growth of [Warsaw](#). Between the world wars, the [Free City of Danzig](#) was in a customs union with Poland and was located between German East Prussia and the so-called [Polish Corridor](#).

Gdańsk lies at the mouth of the [Motława](#) River, connected to the [Leniwka](#), a branch in the delta of the nearby [Vistula River](#), which drains 60 percent of Poland and connects Gdańsk with the Polish capital, [Warsaw](#). Together with the nearby port of [Gdynia](#), Gdańsk is also a notable industrial center. In the late [Middle Ages](#) it was an important seaport and shipbuilding town and, in the 14th and 15th centuries, a member of the [Hanseatic League](#).

In the [interwar period](#), owing to its multi-ethnic make-up and history, Danzig lay in a disputed region between [Poland](#) and the [Weimar Republic](#), and later [Nazi Germany](#). The city's ambiguous [political status](#) was exploited, [furthering tension](#)

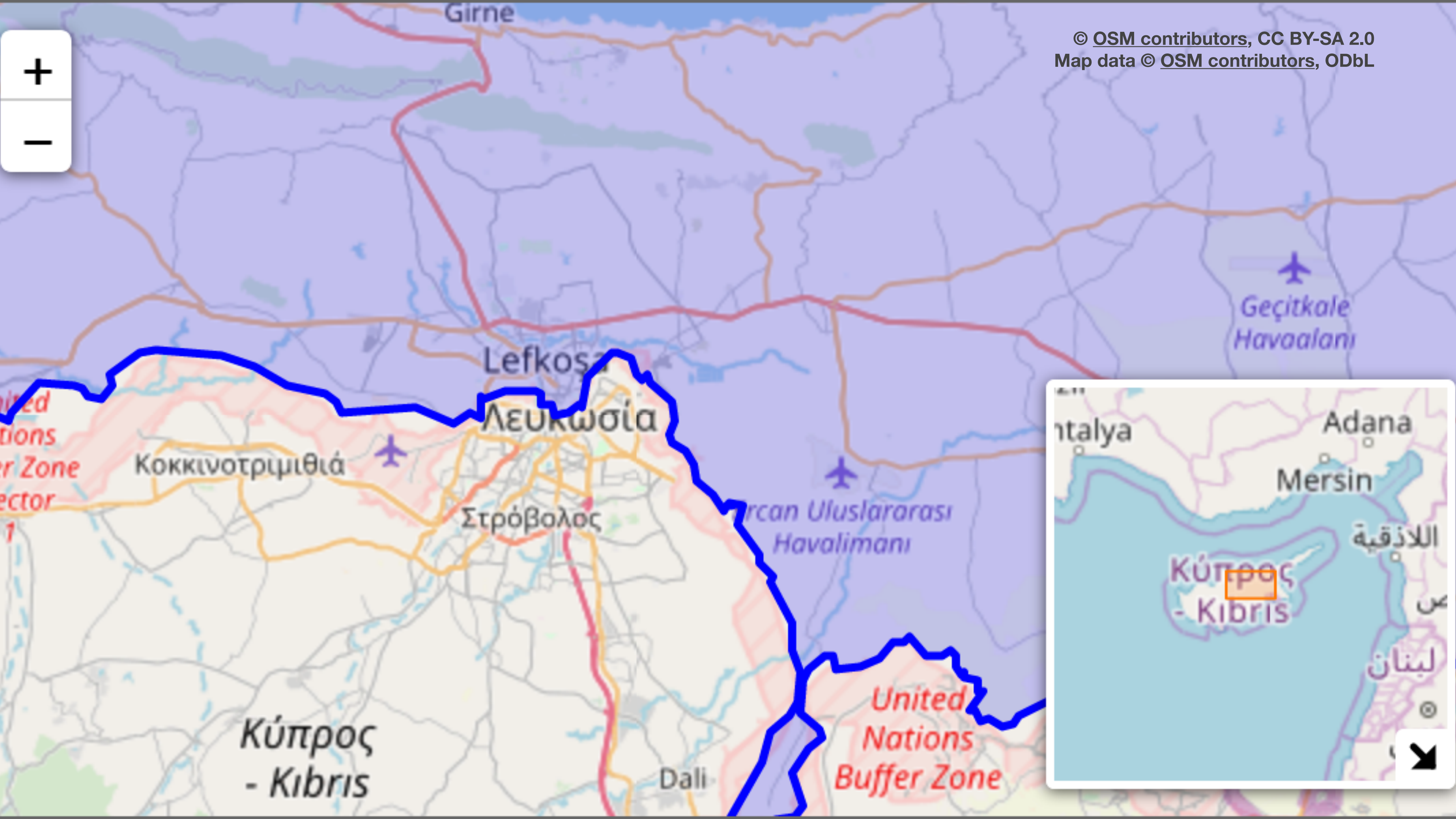




# Geopolitical disputes

- Names
- Borders (... is in ...)
- Nationalities

# Disputes in OpenStreetMap



Search Where is this? Go

### Way: Nicosia (229501573)

greek names

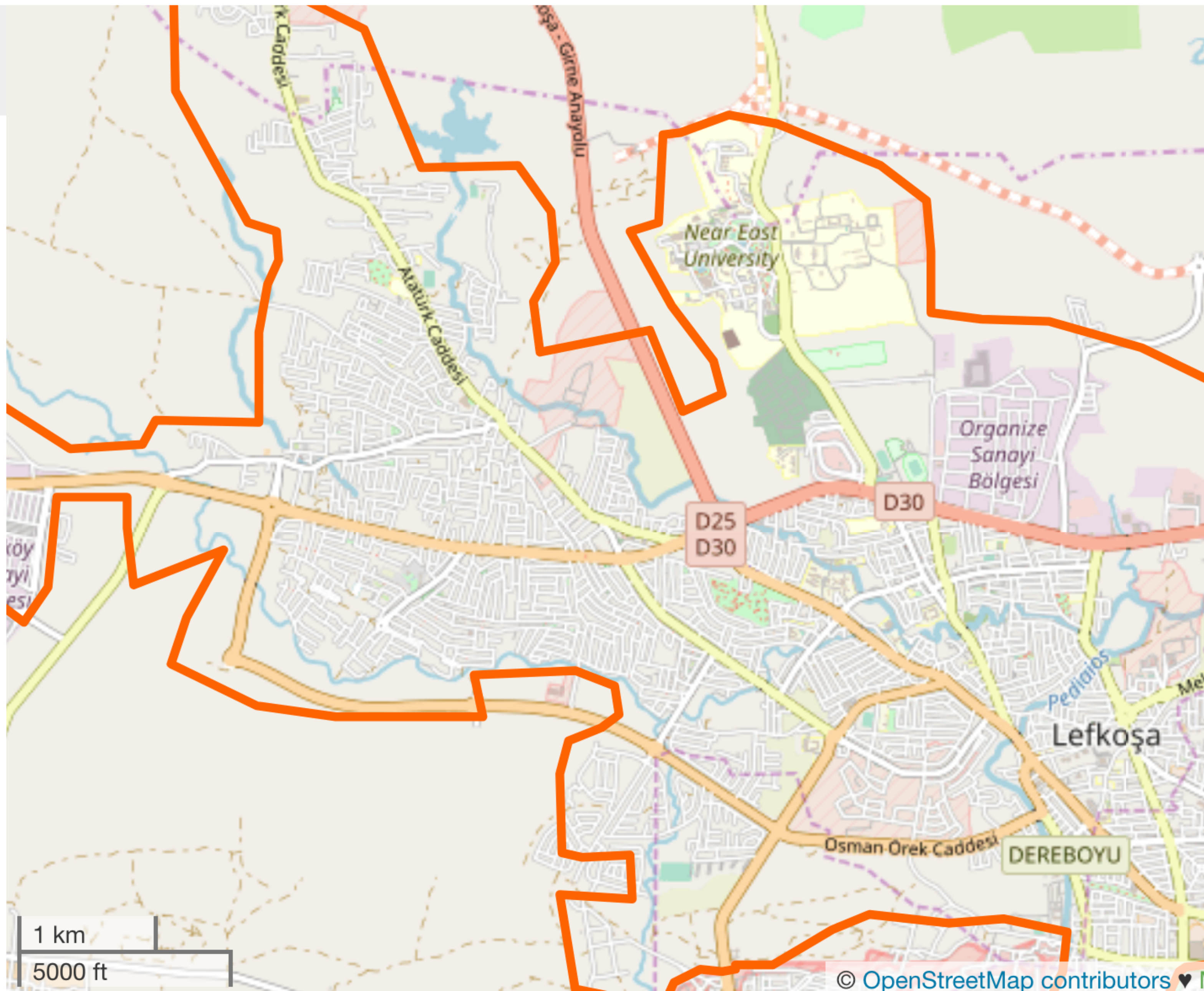
Edited 5 months ago by geraki

Version #29 · Changeset #59004024

### Tags

name	Lefkoşa
name:el	Λευκωσία
name:en	Nicosia
name:tr	Lefkoşa
place	city

### Nodes



**Map what's on the ground**

**Map what's on the sign**



questions

tags

users

badges

unanswered

search

questions  tags  users

## India's administrative boundary issue



Hi,

0

Following bug not yet fixed: <https://help.openstreetmap.org/questions/12810/kashmir-india>



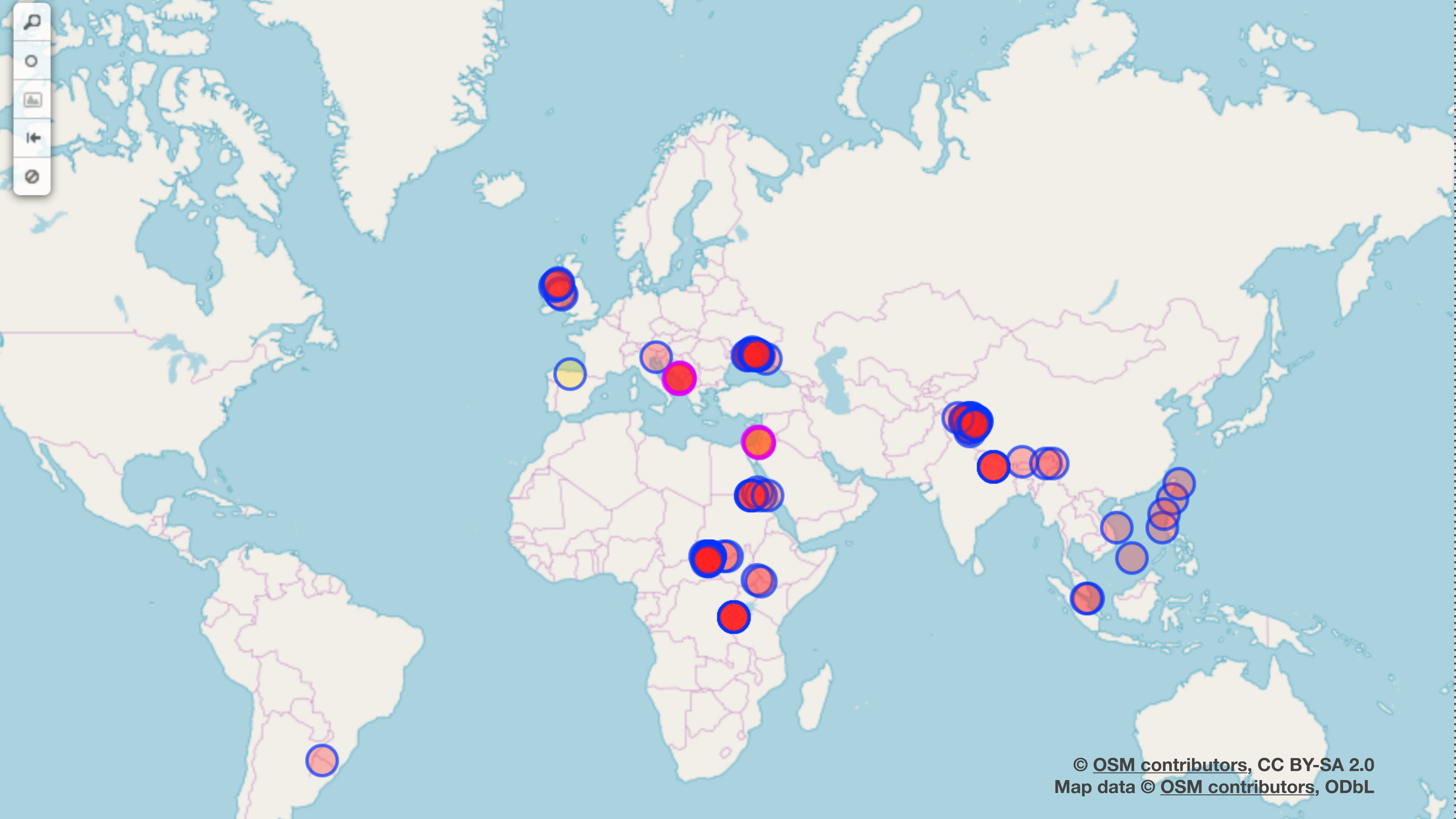
India's administrative boundary is not correct in jammu&kashmir.



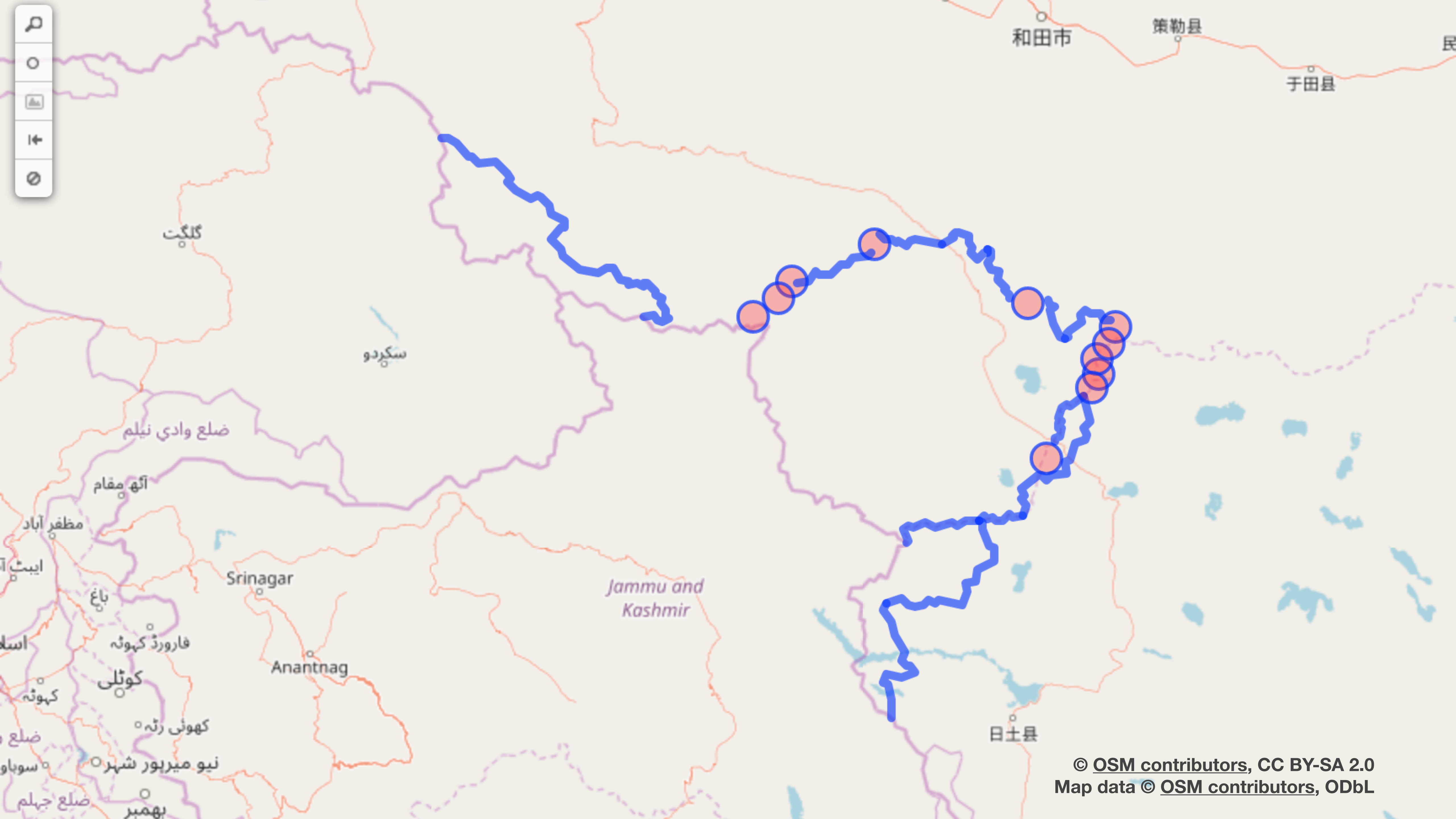
India government announced new law regarding show incorrect map(refer below links).

<http://www.hindustantimes.com/india/up-to-100-crore-fine-prison-sentence-for-wrong-depiction-of-india-map/story-5SSQhsYBsa8bJ4NCkrsawJ.html>

<http://www.defencenews.in/article/7-year-jail,-Rs-1-crore-fine-soon-for-showing-PoK,-Arunachal-as-disputed-4876>







**The world notices**

# *Information for officials and diplomats of countries and entities with disputed territories*

(Approved September 2013)

The features displayed on maps often need to be set out in a specific way to meet legal or cultural requirements in particular jurisdictions. Such requirements may conflict with requirements in other jurisdictions.

The OpenStreetMap Foundation identifies these features to be the main ones of concern:

- Names
- Borders and boundaries
- Descriptions

If you are representing a jurisdiction, such as by being a member of a government organisation, this document outlines the position of OpenStreetMap and what you can do to meet your concerns. You may also be interested as a concerned citizen of your country or as a member of an ethnic or cultural group.



Hainan

Scarborough Shoal

Paracel Islands

THAILAND

Manila

VIETNAM

CAMBODIA

Spratly Islands

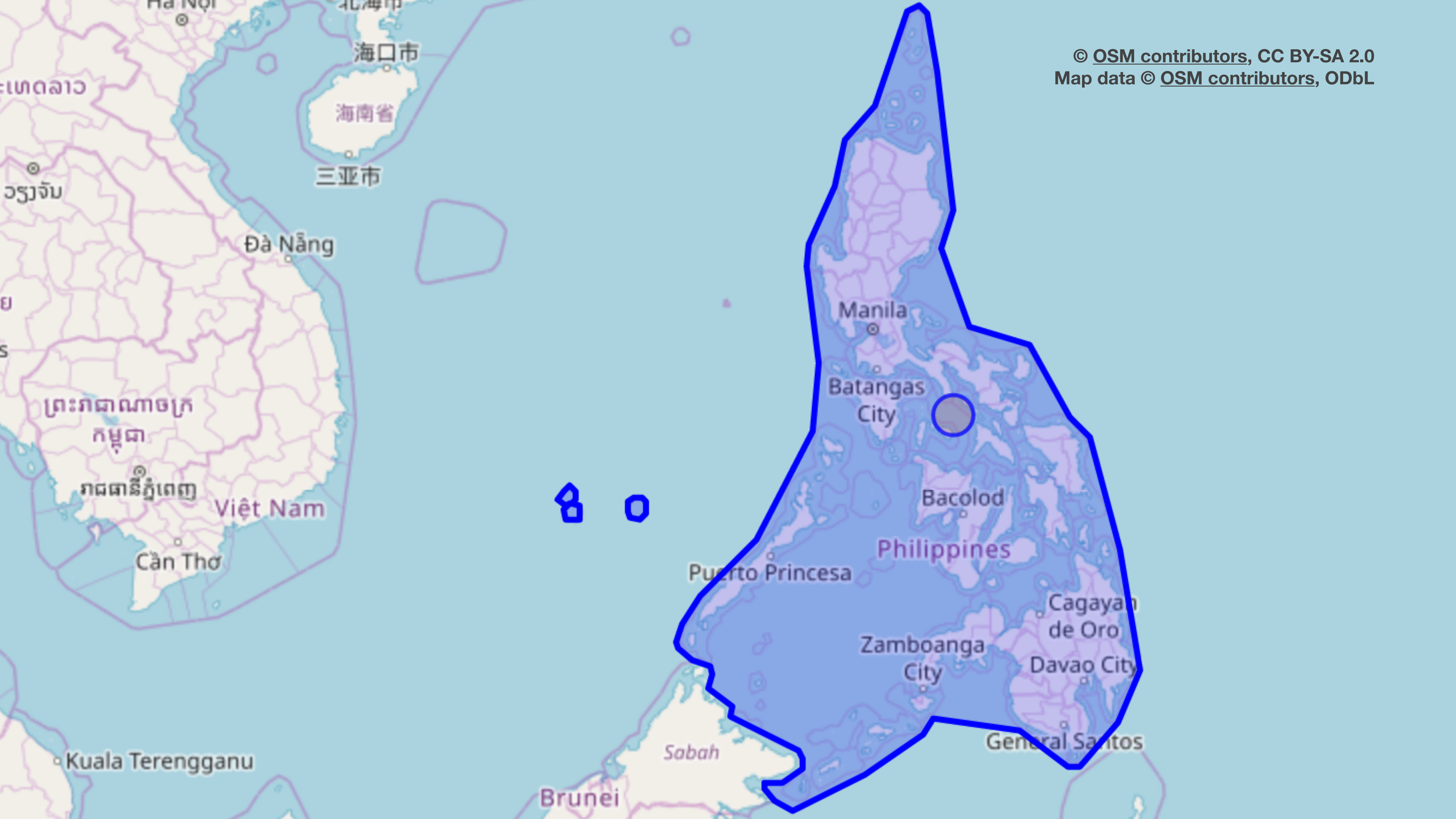
PHILIPPINES

Ho Chi Minh City

500 km

SOUTH CHINA SEA

© OSM contributors, CC BY-SA 2.0  
Map data © OSM contributors, ODbL





Казахстан

Монгол улс

O'zbekiston

Türkmenistan

افغانستان

ایران

پاکستان

عمان

India

မြန်မာ

ประเทศไทย

Việt Nam

Philippines

日本

中国



普洱市

文山

钦州市

玉林市

阳江市

北海市

海口市

三亚市

Hà Nội

海南省

三亞市

ປະເທດລາວ

ວຽງຈັນ

Đà Nẵng

ประเทศไทย

กรุงเทพมหานคร

ព្រះរាជាណាចក្រកម្ពុជា

ភ្នំពេញ

រាជធានីភ្នំពេញ

Việt Nam

Cần Thơ

Manila

Batangas City

Bacolod

Philippines

Puerto Princesa

© OSM contributors, CC BY-SA 2.0

Map data © OSM contributors, ODbL

Zamboanga

**Facebook apologizes for map that violates Vietnam's sovereignty**

*-VnExpress International*

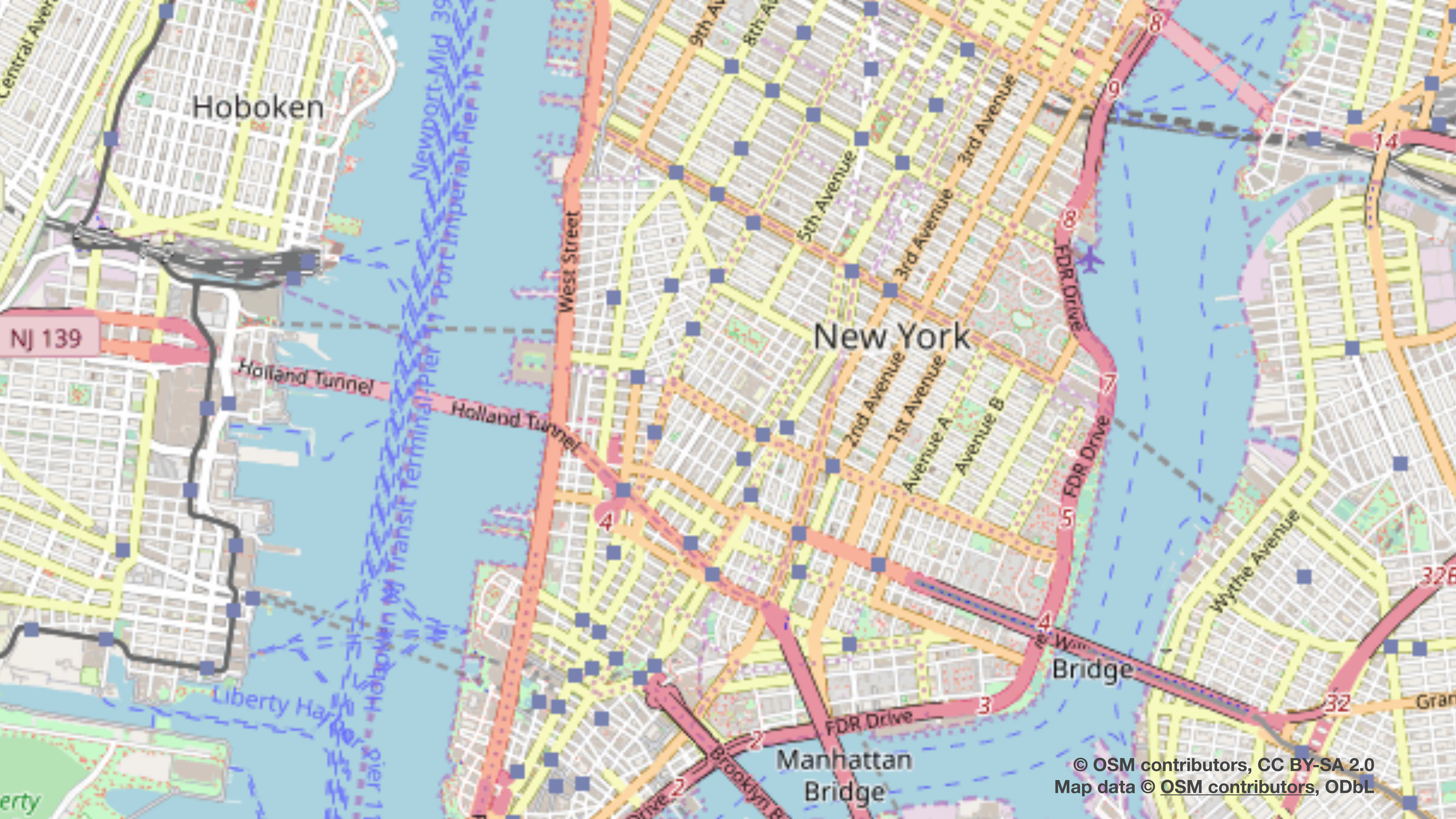
**PM urges strict monitoring over false Facebook map**

*-Nhân Dân (Communist Party)*





**Bad-faith edits**



Hoboken

New York

~~278033604, v14~~

~~129728573, v10~~

~~129728572, v11~~

 [Pedophile Bridge \(432550259, v6\)](#)

 [Pedophile Bridge \(432550257, v5\)](#)

 [Pedophile Bridge \(432550255, v6\)](#)

 [Zionist Cannibal Drive \(420890069, v3\)](#)

 [Zionist Cannibal Drive \(414669905, v4\)](#)

 [Adolf Hitler Memorial Tunnel \(413749473, v5\)](#)

 [Pedophile Bridge \(122660460, v7\)](#)

 [Zionist Cannibal Drive \(122660455, v9\)](#)

 [Zionist Cannibal Drive \(122660454, v11\)](#)

 [Zionist Cannibal Drive \(46177184, v9\)](#)

 [Pedophile Bridge \(46177152, v18\)](#)

## Changeset: 61555047



Minor changes in the City of London

Closed 3 months ago by [MedwedianPresident](#)

### Tags

<a href="#">created_by</a>	JOSM/1.5 (14066 en)
<a href="#">source</a>	knowledge

 [Zionist Cannibal Drive \(122660455, v9\)](#)

 [Zionist Cannibal Drive \(122660454, v11\)](#)

 [Zionist Cannibal Drive \(46177184, v9\)](#)

 [Pedophile Bridge \(46177152, v18\)](#)

 [Zionist Cannibal Drive \(32935109, v12\)](#)

 [Zionist Cannibal Drive \(32935108, v18\)](#)

### Relations (2)

 [Memorial North Pool \(6104490, v4\)](#)

 [Memorial South Pool \(6104489, v4\)](#)

Nodes (1-20 of 53)

1 2 3

Order by

Filters (2)

7 changesets.

**MedwedianPresident** 3 months ago

Improved Auckland City Park

New mapper

Intentional Severity: Critical Resolved

61555099 by wille

0 3 0

**MedwedianPresident** 3 months ago

Minor changes in the City of London

New mapper Mapbox: Graffiti

Mapbox: Spam Mapbox: Profanity

Intentional Severity: Critical Resolved

61555047 by wille

12 22 50

**MedwedianPresident** 3 months ago

Cosmetic changes near Auckland, NZ.

New mapper

Intentional Resolved

61554907 by wille

0 3 0

DETAILS

12 22 50

MedwedianPresident (7 edits) created 3 months ago

Minor changes in the City of London

Translate

New mapper Mapbox: Graffiti Mapbox: Spam

Mapbox: Profanity

SOURCE

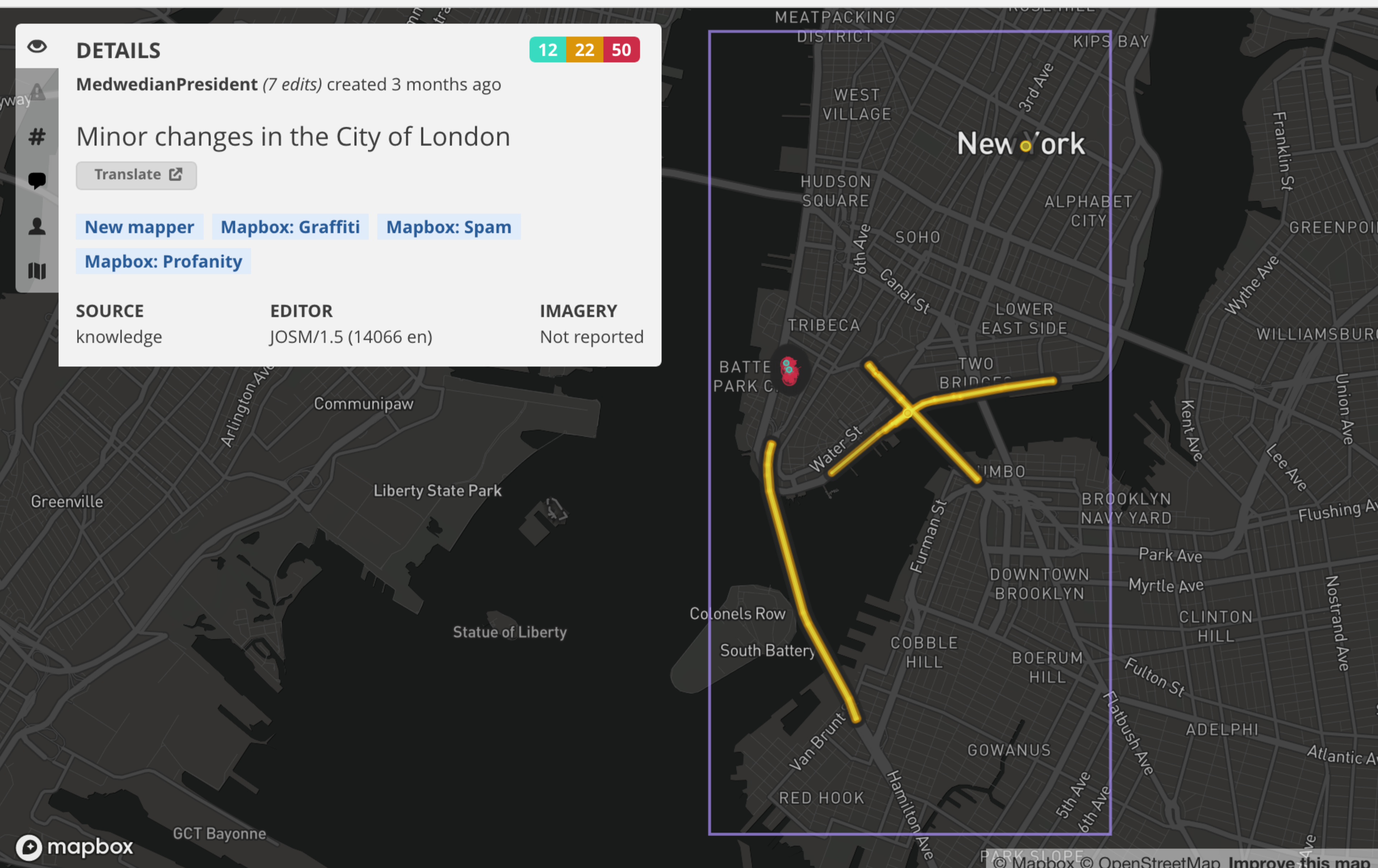
knowledge

EDITOR

JOSM/1.5 (14066 en)

IMAGERY

Not reported



## Help - Sneaky Vandalism!

Reported at OTRS [Ticket:2018081110004267](#) (and a second one as well). On [Empire State Building](#), the map clearly shows the words “Jewtropolis” over Manhattan and the phrase “INSIDE JOB” over lower Manhattan. Where does this data exist? I looked at <https://maps.wikimedia.org/> and zoomed in to NY - and there it is. [foundation:Maps Terms of Use](#) says if you find an error then go to <https://www.openstreetmap.org/> to fix it - but it not there to be fixed! I've asked at ANI, but no joy there. Ronhjones <sup>(Talk)</sup> 11 August 2018 2:01 PM

Tracked in [Phabricator](#)

[Task T201772](#)

**RESOLVED**

[Chrysler Building](#) has the same problem. [Tornado chaser](#) <sup>(talk)</sup> 11 August 2018 2:08 PM

Note just add `| mapframe = no` to the infobox to disable this while the third party issues are being looked at. — xaosflux <sup>Talk</sup> 11 August 2018 2:19 PM

Noting that [Template:Infobox building](#) was only [recently updated](#) to automatically show these kind of maps. Ping [Evad37](#) since he might have more of an idea where exactly the data is stored, having created the modules and templates behind these maps.. [Galobtter](#) <sup>(pingó mió)</sup> 11 August 2018 2:29 PM

It's also in [2 World Trade Center](#) and [2 Broadway](#) and possibly others. I found them in the category [Office buildings in Manhattan](#), I didn't check all of them. -kyykaarme <sup>(talk)</sup> 11 August 2018 2:53 PM

[JW Marriott Essex House](#) - reported at OTRS Ronhjones <sup>(Talk)</sup> 11 August 2018 3:15 PM

It doesn't get any better if you zoom right into the [World Trade Center \(2001–present\)](#). From what I can tell, some large vandalism was reverted on openstreetmap in the last day or so.<sup>[4]</sup> Perhaps there's a caching issue? Drawing live content from a user-generated site, I don't know... [Adolf Hitler Boulevard and Donald Trump Avenue](#) anyone? -- zzuuzz <sup>(talk)</sup> 11 August 2018 2:55 PM

Good grief, I was walking near [Fuck Road](#) last week ..... I'm not sure how WM Maps syncs with OpenStreetMap, but somebody needs to tell the WMF tech team to run a resync ASAP. I've taken data off OpenStreetMap before, you basically have database dumps of [planet.osm](#) released weekly that you can grab and extract.Ritchie333 <sup>(talk)</sup> <sup>(cont)</sup> 11 August 2018 3:08 PM

Since no one seems to have an idea of when this could be fixed on the third-party end, I've just implemented the [hackiest hack](#) to disable maps for the vague manhattan area. Feel free to revert if this problem is fixed/the hack causes problems/if it is a terrible idea. [Galobtter](#) <sup>(pingó mió)</sup> 11 August 2018 3:38 PM

- I've disabled mapframe from [Template:Infobox building](#). @[Evad37](#): please review. — xaosflux <sup>Talk</sup> 11 August 2018 3:39 PM

Xaosflux I realized now that you may have meant to disable mapframe until we've figured out why this vandalism occurred/how to deal with this vandalism on a permanent basis, and not just for fixing this singular issue - if so, apologies for my revert of your edit on the basis of me hackily fixing the issue by disabling mapframe for the manhattan area [Galobtter](#) <sup>(pingó mió)</sup> 11 August 2018 3:50 PM

And seeing [Template talk:Infobox building#Mapframe code disabled](#) I see that is the case... [Galobtter](#) <sup>(pingó mió)</sup> 11 August 2018 3:54 PM

@[Galobtter](#): assuming the immediate problem is fixed I'm fine. There may need to be wider discussion regarding including third party content in our articles, especially if that content is not up to our editorial standards such as displaying hard-to-fix vandalism. — xaosflux <sup>Talk</sup> 11 August 2018 5:07 PM

Yeah, this may be another wikidata-esque thing, where the benefits (nice maps) has to be weighed against vandalism concerns. Per Ronhjones

# Countervandalism mechanisms

- ~~Content protection~~
- ~~Edit filters~~
- Ban on anonymous edits ✓
- User blocks ✓
- ~~CheckUser~~

# Structural challenges

- Privacy concerns about looking up IP addresses
- No central place for coordination
- Data Working Group – data only, not user behavior
- No equivalent to [emergency@wikimedia.org](mailto:emergency@wikimedia.org)
- Little distinction between casual and persistent vandalism



**You can help!**

# Thank you

- <https://wiki.openstreetmap.org/wiki/Disputes>
- [https://wiki.openstreetmap.org/wiki/Ohio River](https://wiki.openstreetmap.org/wiki/Ohio_River)
- [\[\[User:mxn\]\]](#)
- OpenStreetMap user “Minh Nguyen”
- @1ec5
- [mxn@1ec5.org](mailto:mxn@1ec5.org)