

F
128
.47
.G784



Class _____

Book _____

COPYRIGHT DEPOSIT

100 *Photographic Views*

OF THE

GREATER

NEW YORK.

GREATER NEW YORK ALBUM.

ONE HUNDRED SELECTED VIEWS.

NEW YORK CITY, BROOKLYN, STATEN ISLAND, ETC.

FROM RECENT PHOTOGRAPHS.

CHICAGO AND NEW YORK:
RAND, McNALLY & COMPANY, PUBLISHERS.

1895.



25682

Copyright, 1894, by Rand, McNally & Co.
Copyright, 1895, by Rand, McNally & Co.

111
47
-GTT



A MISTY MORNING ON NEW YORK BAY.



CASILE GARDIN

BATTERY PARK AND HARBOR FROM ROOF OF WASHINGTON BUILDING — 1 Broadway



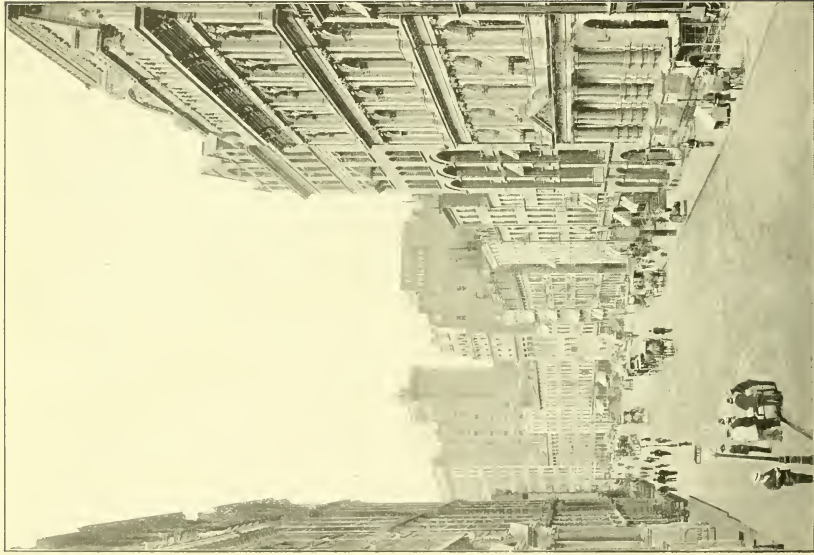
VIEW LOOKING SOUTHWEST FROM ROOF OF OFFICE BUILDING, 60 BROADWAY.



VIEW LOOKING SOUTH FROM ROOF OF OFFICE BUILDING, 66 BROADWAY.



VIEW LOOKING NORTHEAST FROM ROOF OF OFFICE BUILDING, 66 BROADWAY.



N. Y. STOCK EXCHANGE

BROAD STREET, LOOKING SOUTH FROM WALL STREET



INTERIOR OF NEW YORK STOCK EXCHANGE—Broad and Wall Streets.



ASSAY OFFICE.

UNITED STATES SUB-TREASURY — Northeast Corner Wall and Nassau Streets.



THE NEW YORK CLEARING HOUSE—Cedar Street,
between Broadway and Nassau Street.

R. W. GIBSON, Architect.



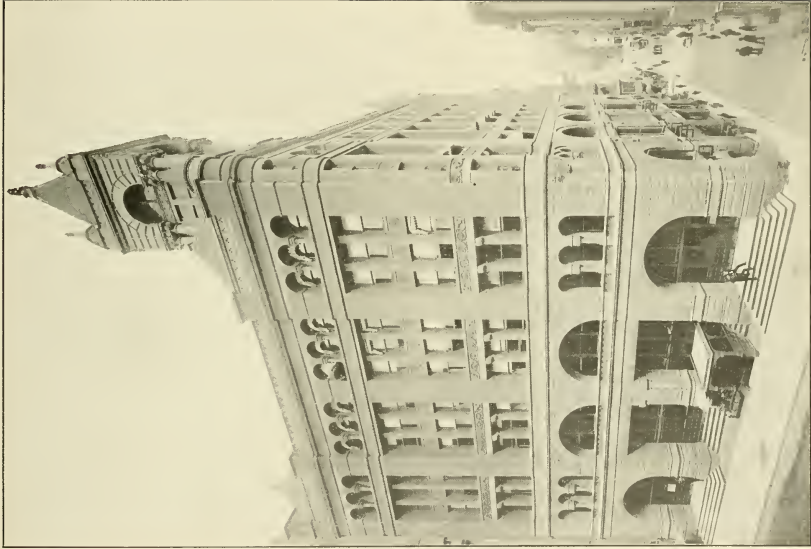
DELMONICO'S—Corner Beaver and South William Streets.

JAS. BROWN LORD, Architect.



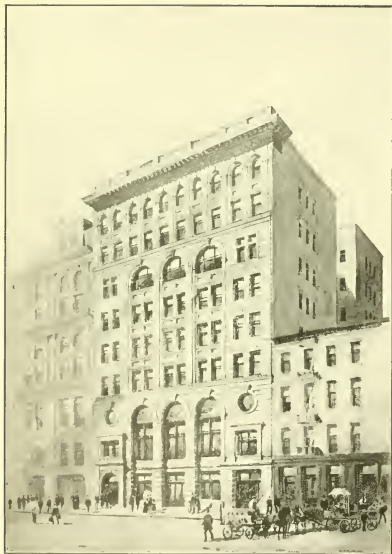
R. MC N-CO

WALL STREET AND TRINITY CHURCH.



CONSOLIDATED STOCK AND PETROLEUM EXCHANGE — Northeast Corner
Broadway and Exchange Place.

F. D. LEROUX, Architect.



THE COFFEE EXCHANGE OF THE CITY OF
NEW YORK — 113-117 Pearl Street.

R. W. GIBSON, Architect.



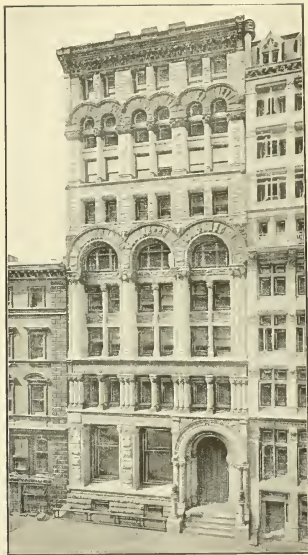
FIDELITY & CASUALTY CO.'S BUILDING — Cedar
Street, from Temple to Church Streets.

CYRUS L. W. EIDLITZ, Architect.



CORN EXCHANGE BANK — Corner William and
Beaver Streets.

R. H. ROBERTSON, Architect.



UNITED STATES TRUST CO.— 45 Wall Street.

R. W. GIBSON, Architect.

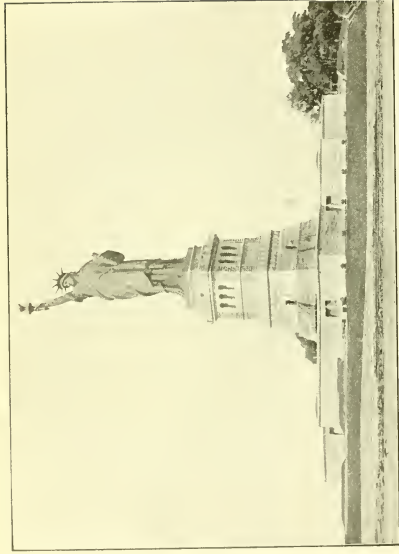


JEANETTE PARK

SOUTH STREET, LOOKING SOUTH FROM COENTIES SLIP.

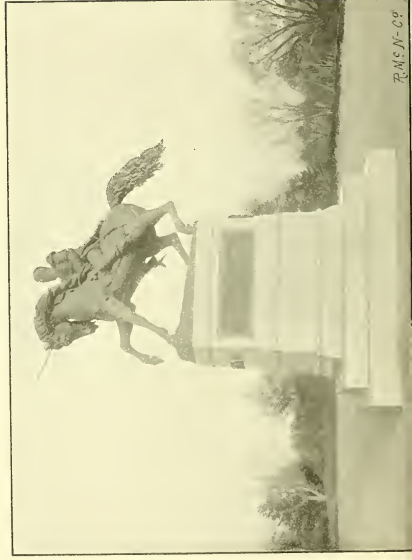


OCEAN STEAMERS IN BERTHS, NORTH RIVER.

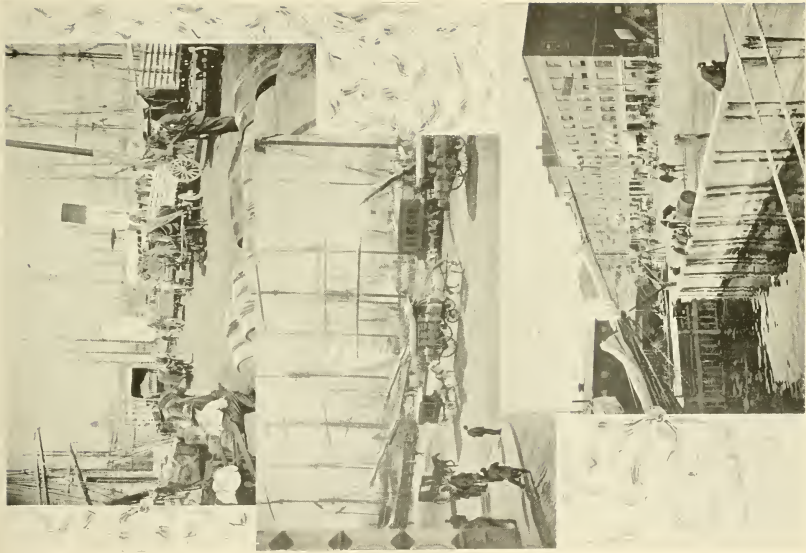


LIBERTY ENLIGHTENING THE WORLD — Bedloe's Island, New York Bay

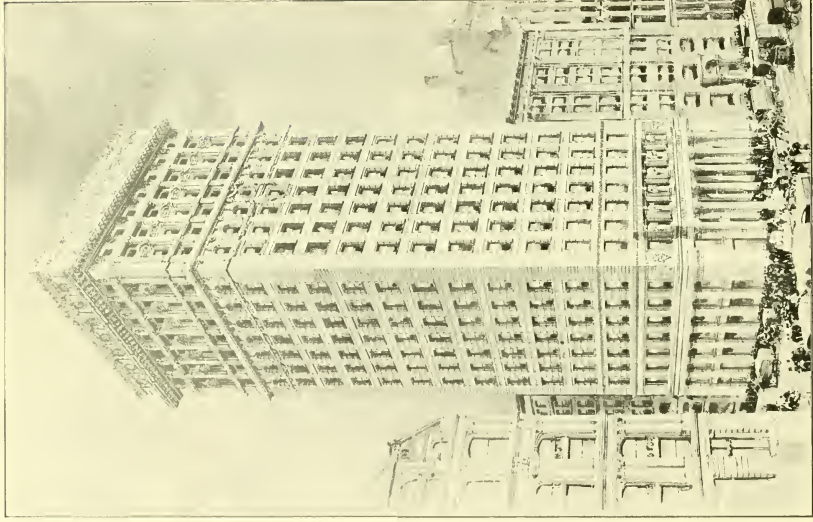
Statue by BARTHOLDI



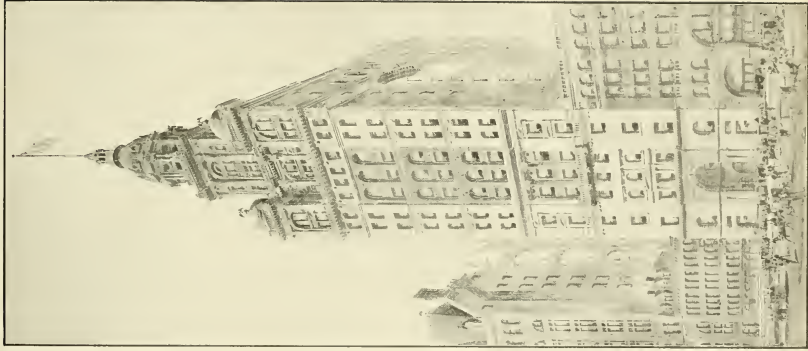
R.M.C.N.-C9



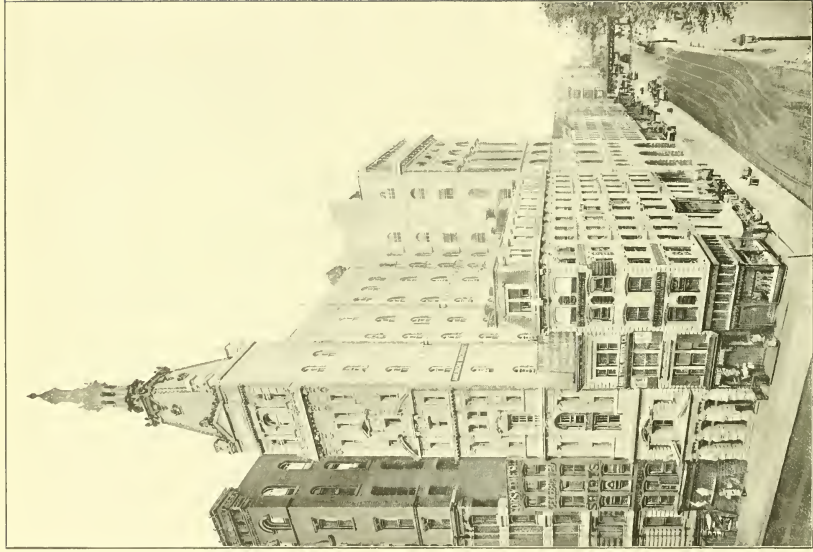
SOME SOUTH STREET SCENES.



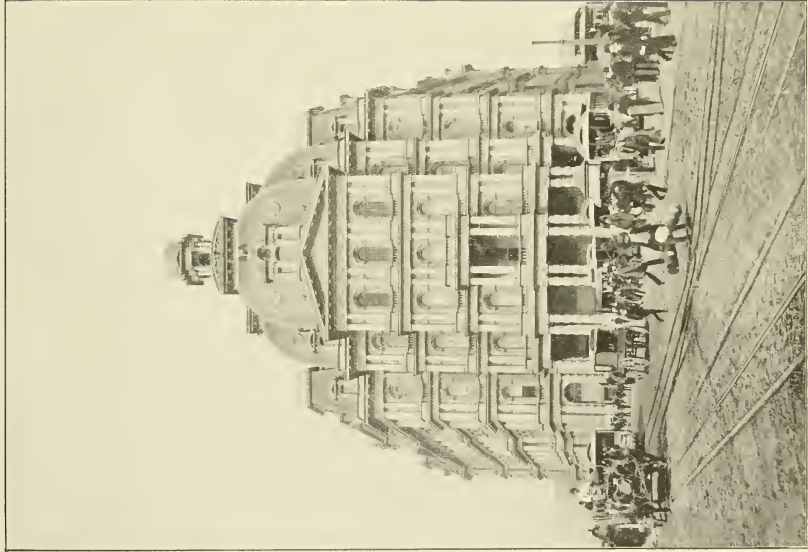
AMERICAN SURETY COMPANY. — Southeast, Corner Broadway and Pine Street.



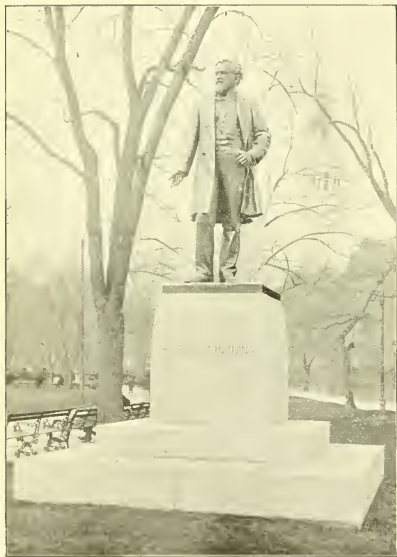
MANHATTAN LIFE INSURANCE CO.'S
BUILDING—64 and 66 Broadway.



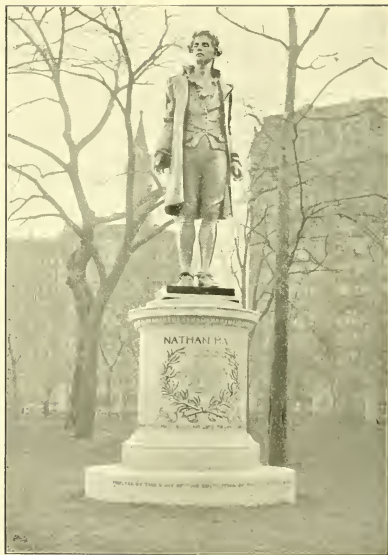
MAIL AND EXPRESS BUILDING — Broadway and Fulton Street.



NEW YORK POST OFFICE — Broadway, Park Row, and Mail Street.



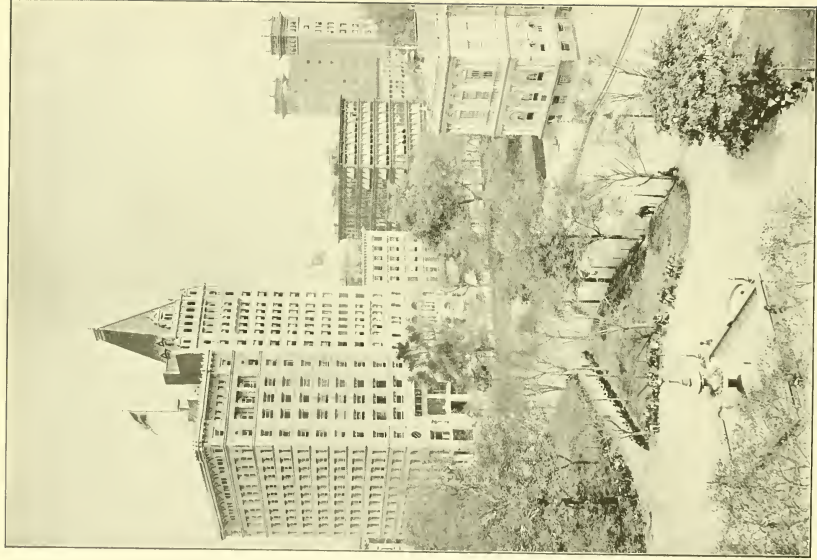
STATUE OF ROSCOE CONKLING — Madison Square.



STATUE OF NATHAN HALE — City Hall Park.



THE CITY HALL, NEW YORK—In City Hall Park, between Broadway and Park Row, opposite Murray Street.



CITY HALL PARK AND NEW BUILDINGS ON BROADWAY — Between
Merrow and Chestnut Streets.



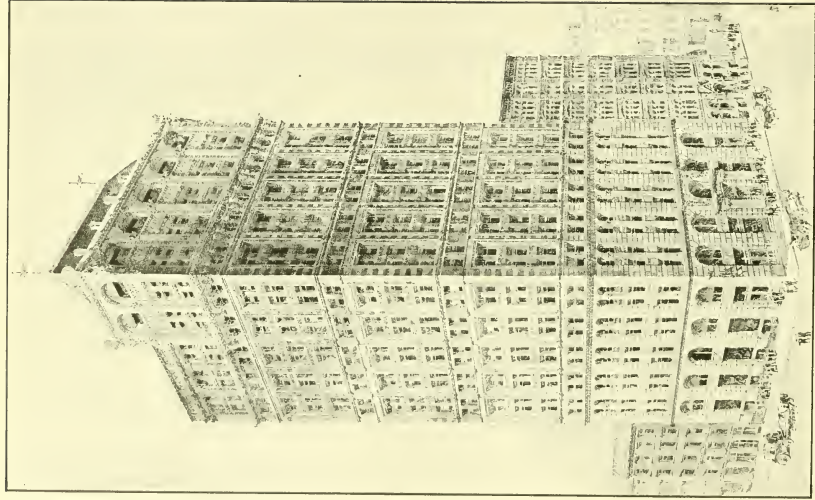
WORLD.

SUN.

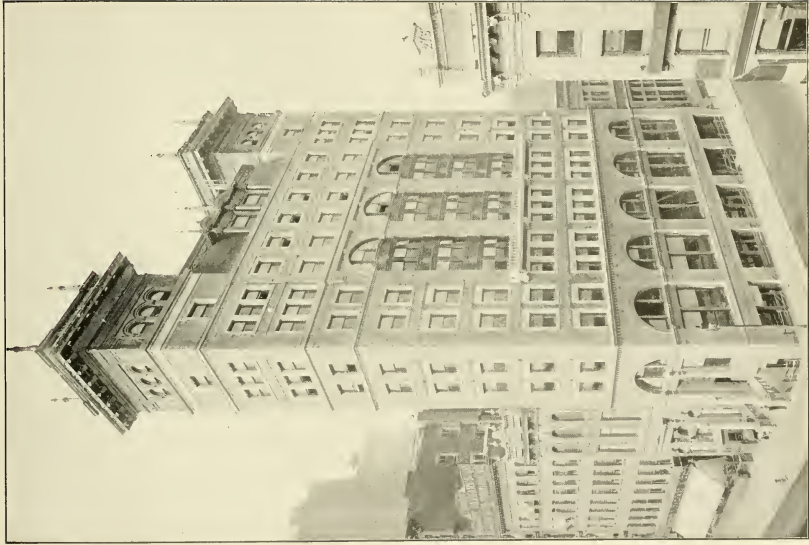
TRIBUNE.

1898.

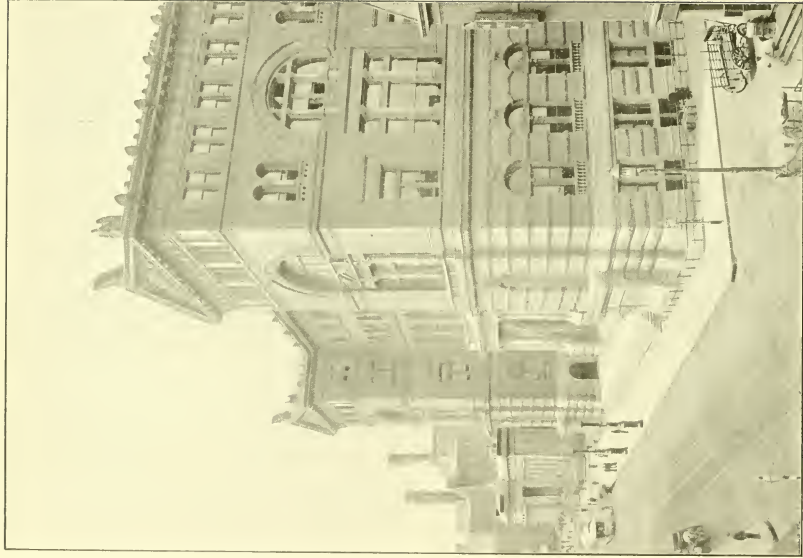
PRINTING HOUSE SQUARE.



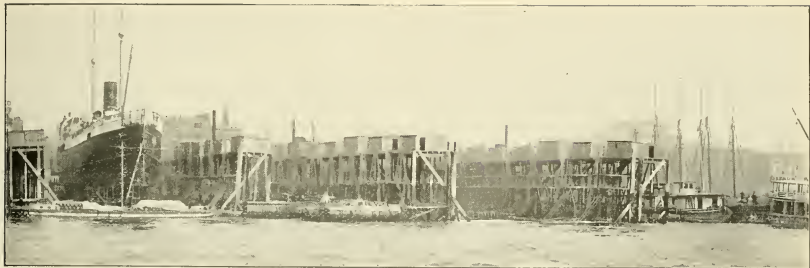
AMERICAN TRACT SOCIETY—Southeast Corner Nassau and Spruce Streets.



NATIONAL SHOE & LEATHER BANK BUILDING — Southwest Corner
Broadway and Chambers Street.



THE CRIMINAL COURTS AND THE TOMBS — Centre Street, Franklin
to Leonard Streets.

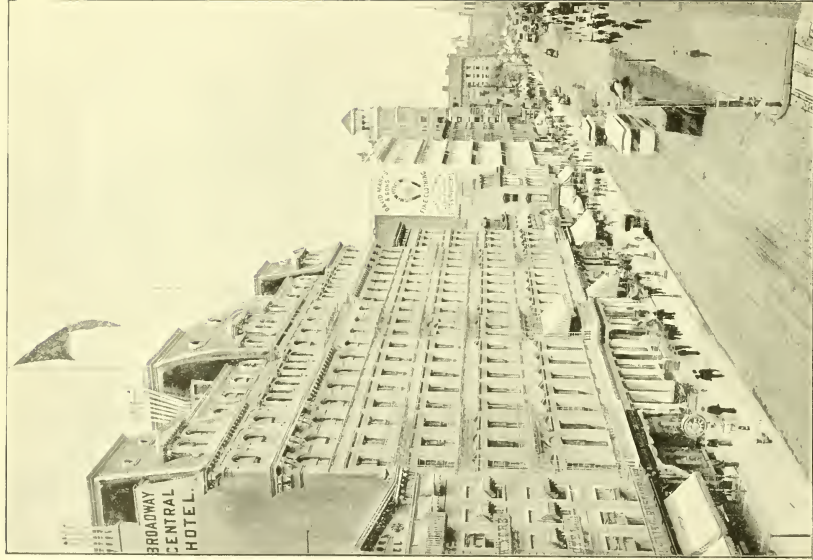


SECTIONAL DRY DOCK—East River, New York.

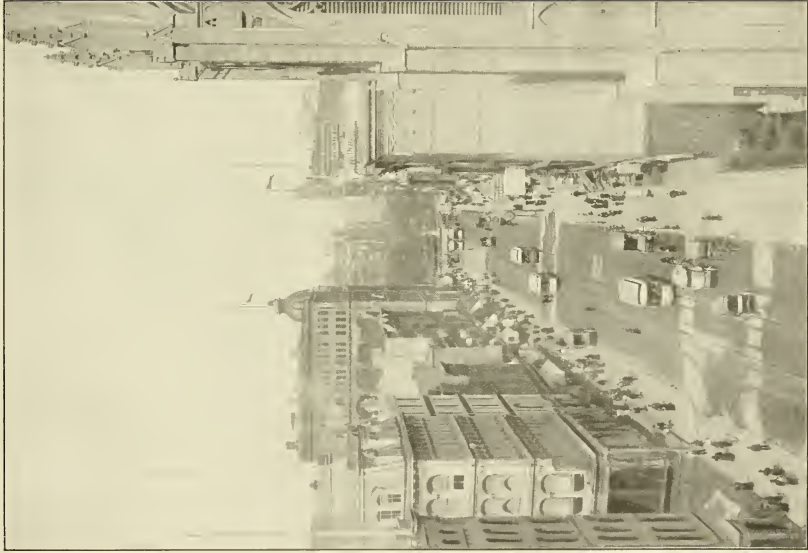


OLD FRIGATE "VERMONT," USED AS A RECEIVING SHIP.

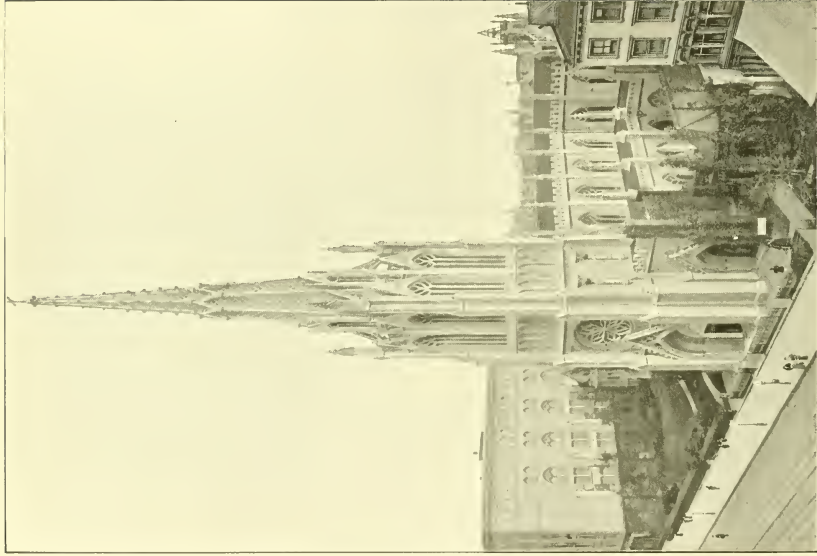
BROOKLYN NAVY YARD—East River.



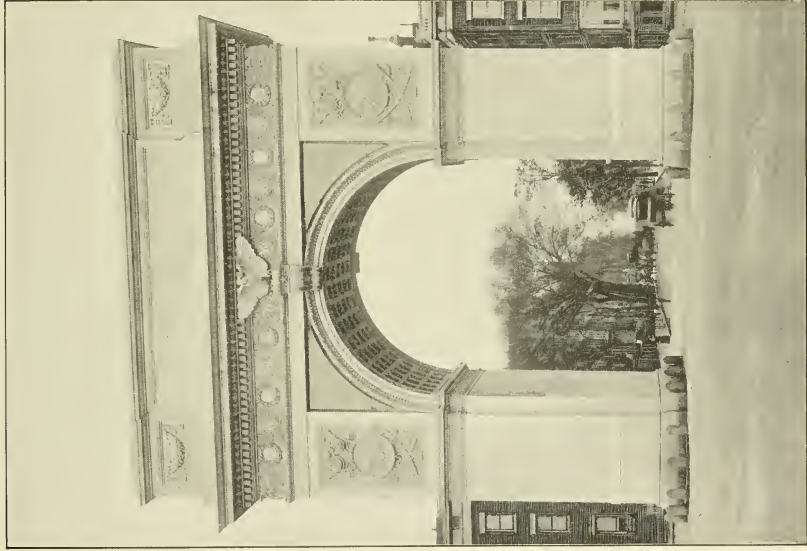
BROADWAY, BOND STREET TO TENTH STREET.



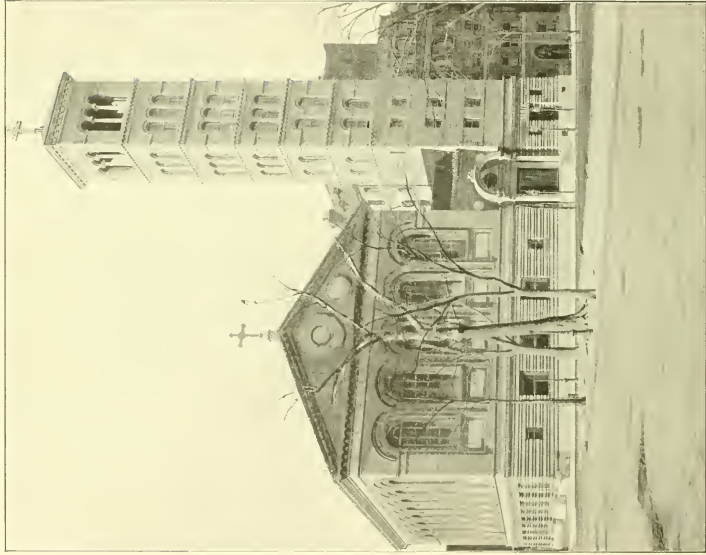
BROADWAY, FROM TENTH STREET TO UNION SQUARE.



GRACE CHURCH, PROTESTANT EPISCOPAL. — Broadway, near Tenth Street.



THE WASHINGTON MEMORIAL ARCH — Washington Square, at the beginning
of Fifth Avenue.



JUDSON MEMORIAL BAPTIST CHURCH — Washington Square (South) and
Thompson Street.

McKIM, MEAD & WHITE, Architects.



FOURTEENTH STREET, LOOKING WEST FROM FIFTH AVENUE.



WASHINGTON EQUESTRIAN MONUMENT.

UNION SQUARE — Looking Northwest from Corner Fourth Avenue and Fourteenth Street.

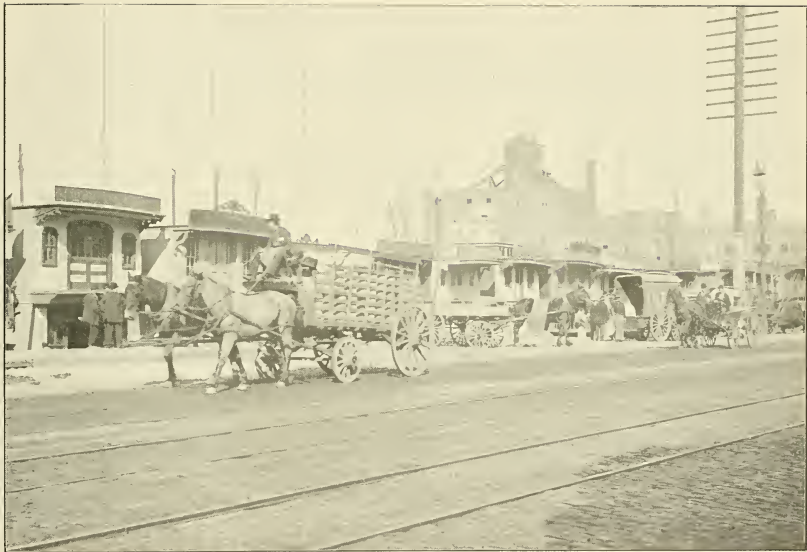


INTERIOR OF CHURCH OF ST. FRANCIS XAVIER — 36 West Sixteenth Street.

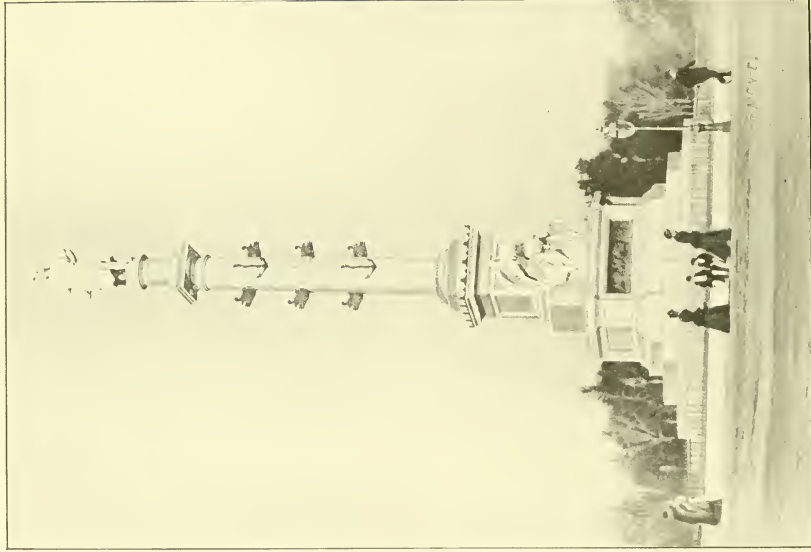
PATRICK C. KEELY, Architect.



GANSEVOORT MARKET—West and Washington Streets, Gansevoort to Little Twelfth Street.



OYSTER ROW — West Street, near Foot of Eleventh Street.

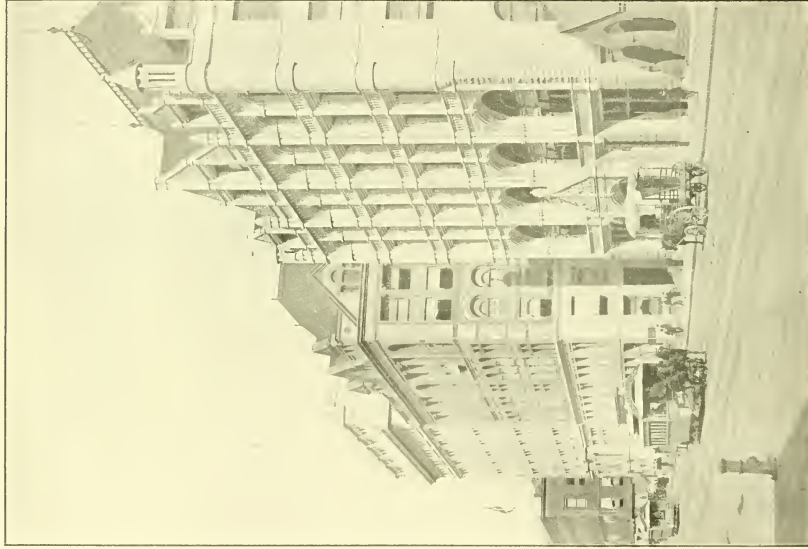


COLUMBUS MONUMENT.—Fifty-ninth Street, Broadway, and Eighth Avenue.



SOME NEW YORK STATUES.

ABRAHAM LINCOLN, UNION SQUARE (WEST) AND EAST FOURTEENTH STREET.
S. F. B. MORSE, THE MALL, CENTRAL PARK. WILLIAM H. SEWARD, MADISON SQUARE.

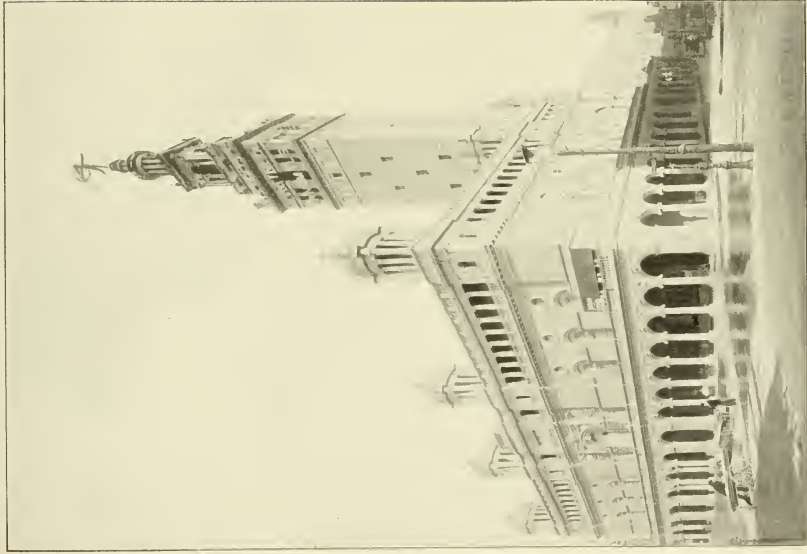


SOCIETY FOR PREVENTION OF
CRUELTY TO CHILDREN

UNITED CHARITIES
BUILDING.

CHURCH MISSIONS
HOUSE.

FOURTH AVENUE — Twenty-first to Twenty-third Streets



MADISON SQUARE GARDEN — Madison and Fourth Avenues,
West Twenty-sixth, and West Twenty-seventh Streets

McCOMBS, MERRILL, & WAIVER, Architects



FIFTH AVENUE HOTEL.

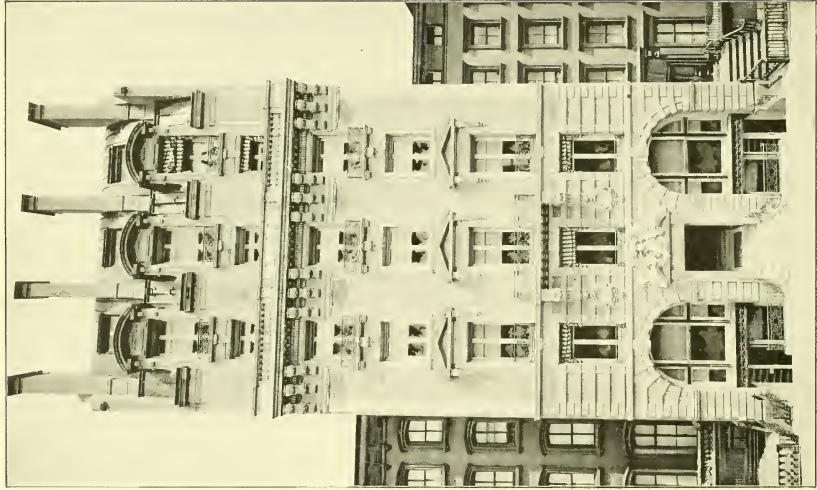
MADISON SQUARE.

JUNCTION BROADWAY AND FIFTH AVENUE.

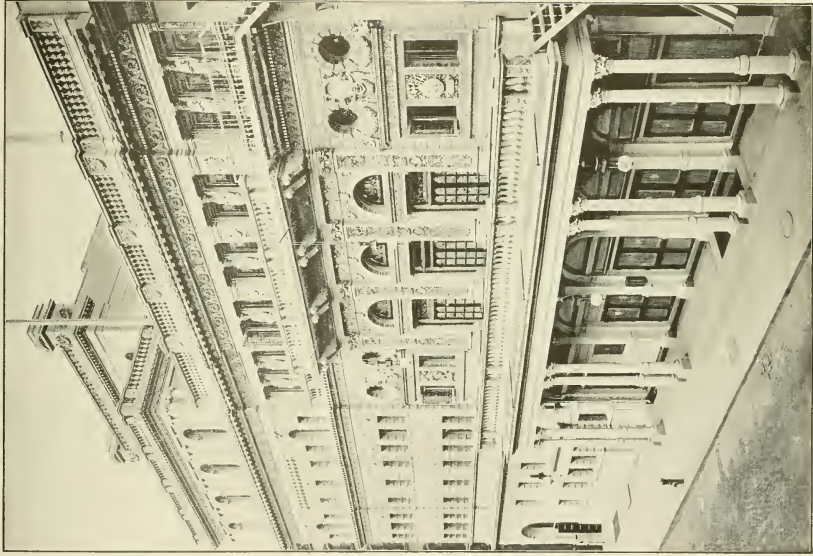


ARMORY, 71st REGIMENT, N. G. S. N. Y.—Southeast Corner Park Avenue and Thirty-fourth Street.

J. R. THOMAS, Architect.

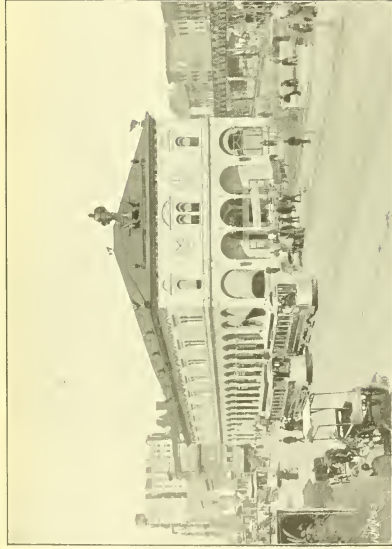


"LIFE" BUILDING—19 West Thirty-first Street.



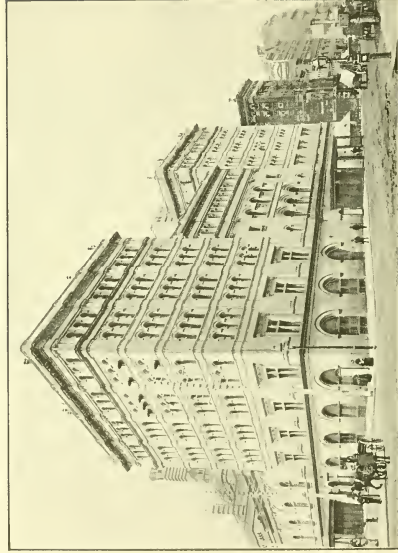
FIFTH AVENUE THEATER — Twenty-eighth Street, near Broadway.

FRANCIS H. KIMBALL, Architect.



NEW YORK HERALD BUILDING.—Herald Square, Broadway, Sixth Avenue,
and Thirty-fifth Street.

McKIM MEAD & WHITE, Architects.



METROPOLITAN OPERA HOUSE.—Broadway, Seventh Avenue, West Thirty-ninth
and West Fortieth Streets



HARRIGAN'S THEATER — West Thirty-fifth Street,
near Sixth Avenue.

FRANCIS H. KIMBALL, Architect.



BERKELEY SCHOOL — 20 West Forty-fourth Street.

LAMB & RICCI, Architects.



THE CASINO AND ABBEY'S THEATER—Broadway, Thirty-ninth to Thirty-eighth Street.



NORMAL COLLEGE—Park and Lexington Avenues, Sixty-eighth to Sixty-ninth Street.



WORK HOUSE, BLACKWELL'S ISLAND—East River.



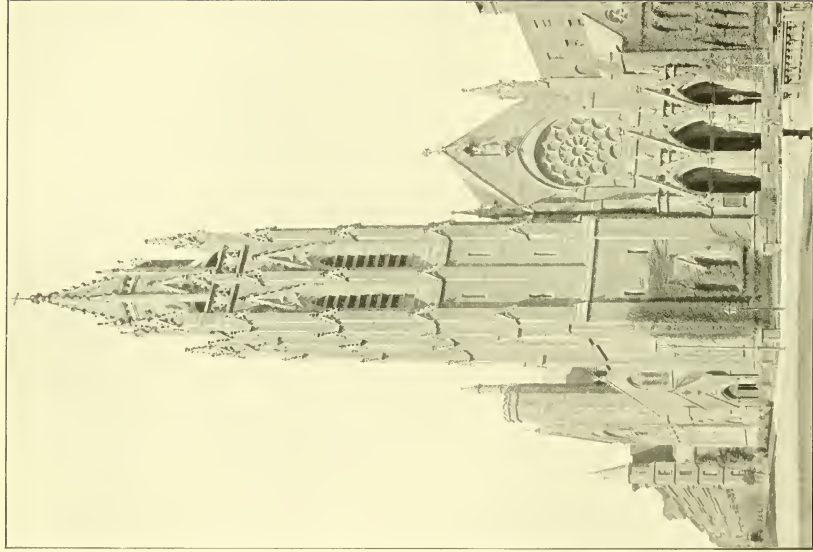
CITY HOSPITAL.

NURSES' HOME.

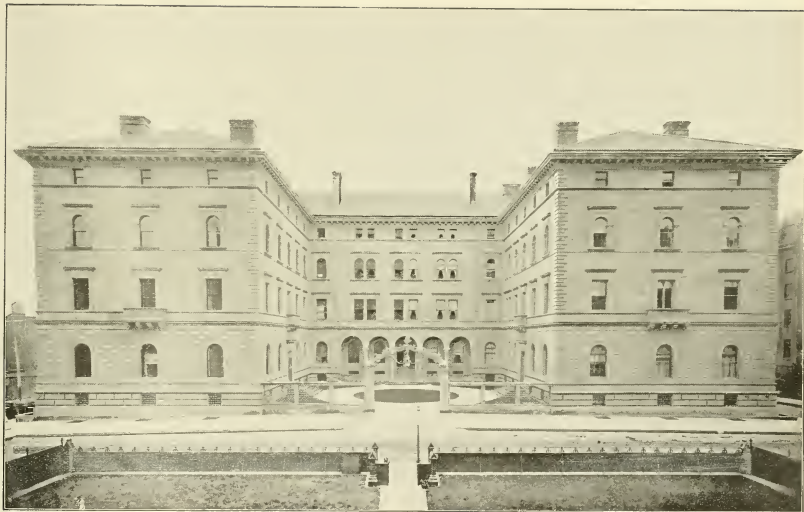
SOUTH END BLACKWELL'S ISLAND—East River.



WEST STREET, LOOKING NORTH FROM RECTOR STREET.



ST. THOMAS' CHURCH — Fifth Avenue and Fifty-third Street.



H. C. FAHNESTOCK.

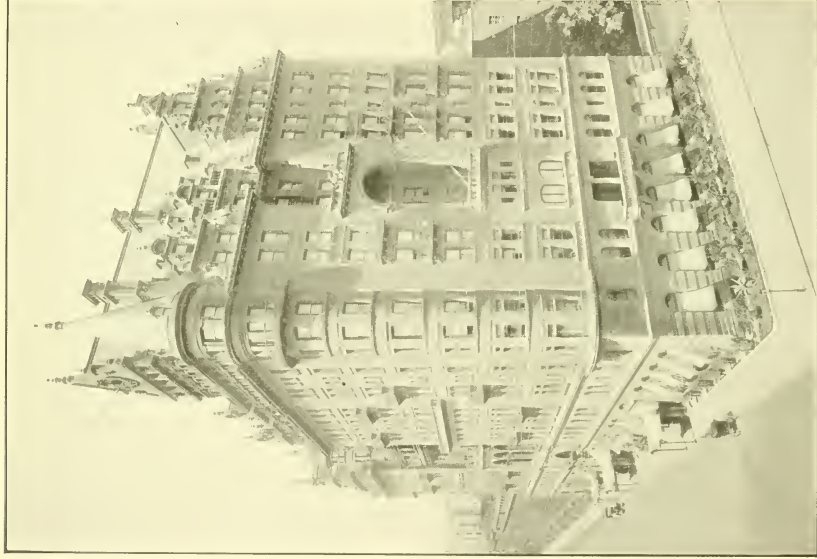
J. T. ADAMS.

A. H. HOLMES.

WILLIAM REID.

RESIDENCES NORTHEAST CORNER MADISON AVENUE AND FIFTIETH STREET.

McKIM, MEAD & WHITE, Architects



THE WALDORF — Northwest Corner Fifth Avenue and Thirty-third Street.



WINDSOR HOTEL AND FIFTH AVENUE — Looking North from Forty-sixth Street.



THE CENTURY CLUB — 7 West Forty-third Street.

McKIM, MEAD & WHITE, Architects.



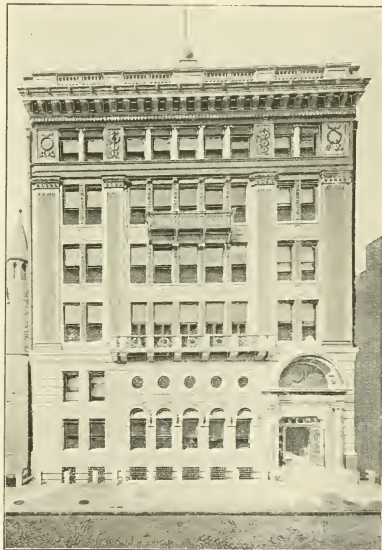
SOCIETY OF AMERICAN ARTISTS — 215 West
Fifty-seventh Street.

H. J. HARDENBERGH, Architect.



ST. BARTHOLOMEW'S PARISH HOUSE—205 East
Forty-second Street.

RENWICK, ASPINWALL & RENWICK, Architects.



COLLEGE OF PHARMACY—115 West Sixty-eighth Street.

LITTLE & O'CONNOR, Architects.



MRS. WM. H. VANDERBILT.

WM. D. SLAYL.

FIFTH AVENUE, FIFTY-FIRST TO FIFTY-SECOND STREETS.

HEUER BROS., Architects.



RESIDENCE OF CORNELIUS VANDERBILT—Fifth Avenue, Fifty-seventh to Fifty-eighth Street.

GEORGE B. POST, Architect.

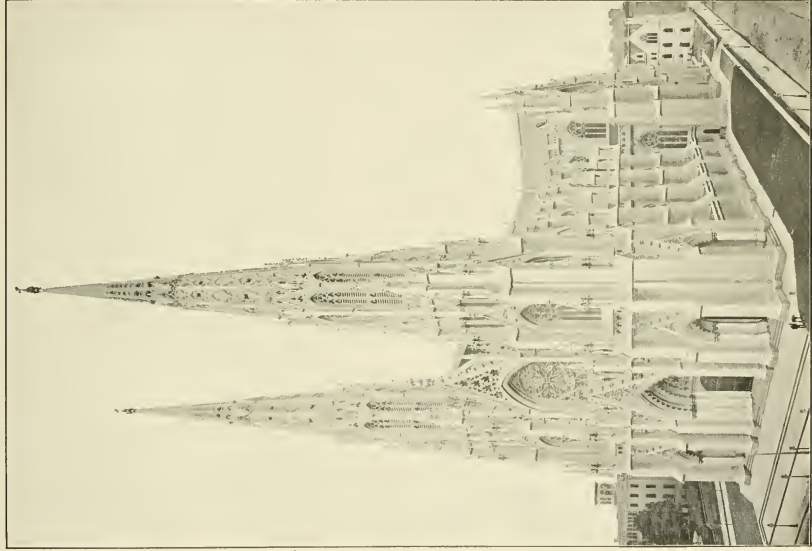


ENTRANCE, CHURCH MISSIONS HOUSE Southeast
Corner Fourth Avenue and Twenty second Street.

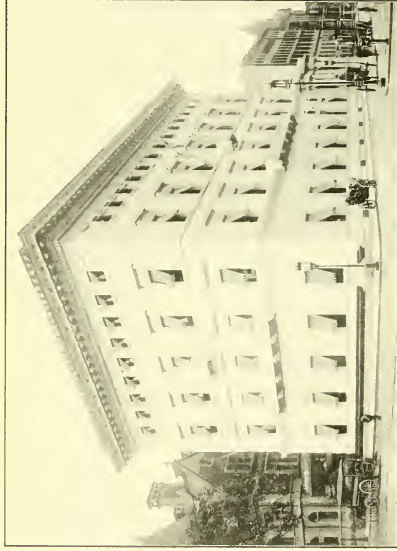
R. W. GIBSON, Architect



INTERIOR OF ST. PATRICK'S CATHEDRAL.

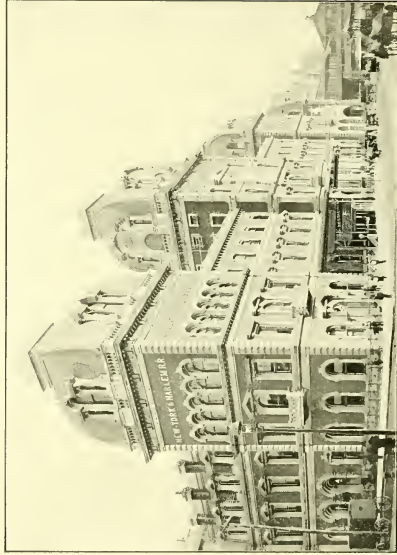


ST. PATRICK'S CATHEDRAL, ROMAN CATHOLIC — Fifth Avenue, Fiftieth, and Fifty-first Streets.



METROPOLITAN CLUB—Northeast Corner Fifth Avenue and Sixtieth Street

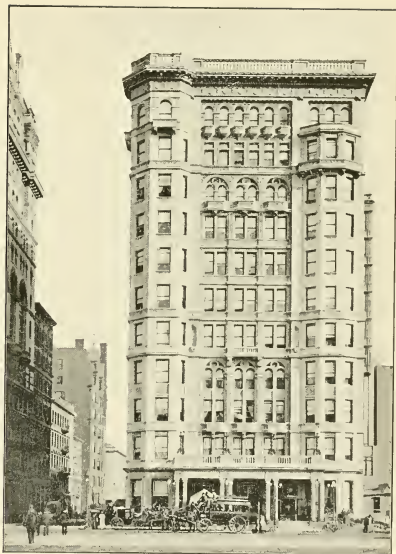
MCKIM, MEAD & WHITE, Architects





HOTEL NEW NETHERLAND—Northeast Corner Fifth Avenue and Fifty-ninth Street.

WM. H. HUME, Architect.



HOTEL SAVOY—Southeast Corner Fifth Avenue and Fifty-ninth Street.

RALPH S. TOWNSEND, Architect.



THE MALL, CENTRAL PARK.



LOOKING OBELISK.

THE EAST DRIVE — Central Park.



THE METROPOLITAN MUSEUM OF ART—Central Park, near Fifth Avenue and Eighty-second Street.



METROPOLITAN MUSEUM OF ART—Hall of Architectural Casts.



FOUNTAIN AND LAKE — Central Park.



AMERICAN MUSEUM OF NATURAL HISTORY—Central Park (West) and Seventy-seventh Street

CADY, BERG & SEE, Architects.



MAY PARTIES, CENTRAL PARK.



TEMPLE BETH-EL, HEBREW — Southeast Corner
Fifth Avenue and Seventy-sixth Street.

BRUNNER & TRYON, Architects.



HOLLAND HOUSE — Southwest Corner Fifth Avenue and
Thirtieth Street.

GEO. E. HARDING & GOOCH, Architects.



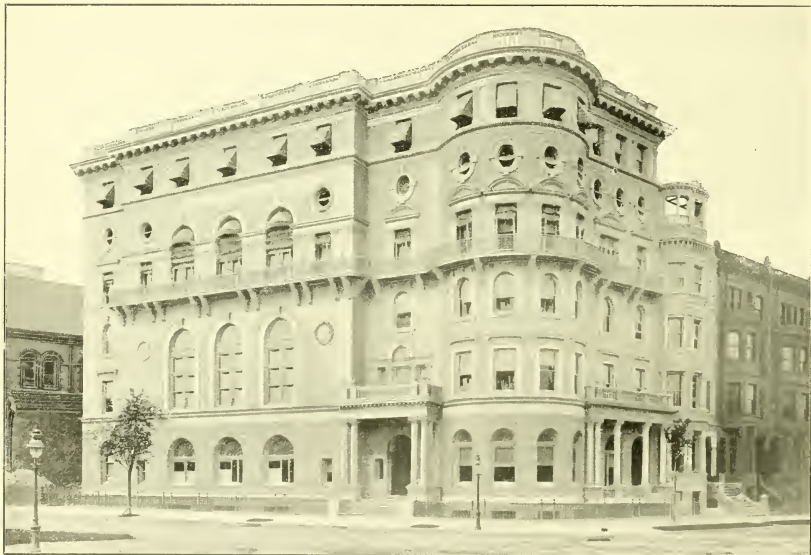
HOTEL MAJESTIC—Central Park (West), Seventy-first to Seventy-second Street.

ALFRED ZUCKER, Architect.



THE DAKOTA FLATS — Northwest Corner Central Park (West) and Seventy-second Street.

H. J. HARDENBURG, Architect.



COLONIAL CLUB—Boulevard and Seventy-second Street.

HENRY F. KILBURN, Architect.



RESIDENCE OF CHARLES L. TIFFANY—Northwest Corner Madison Avenue and Seventy-second Street.

McKIM, MEAD & WHITE, Architects.



RESIDENCES — Southwest Corner West-End Avenue and Seventy-second Street.

LAMB & RICH, Architects.

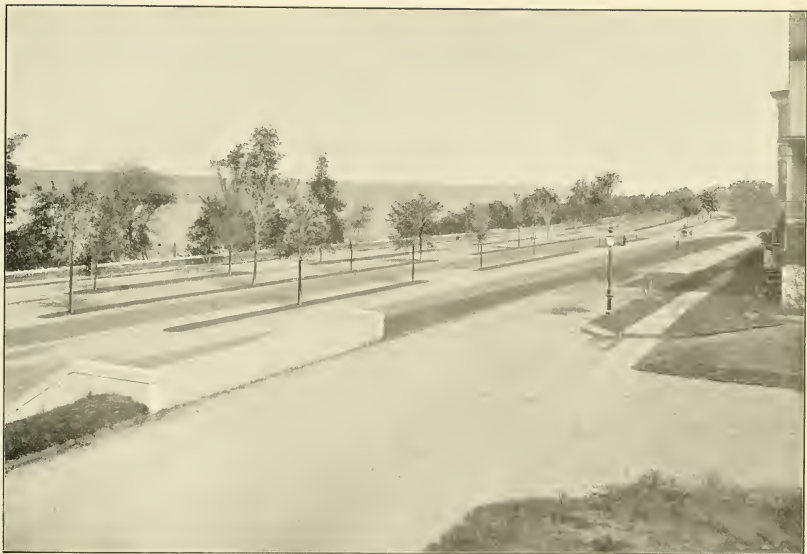


RESIDENCES — Southwest Corner West-End Avenue and Eighty-third Street.

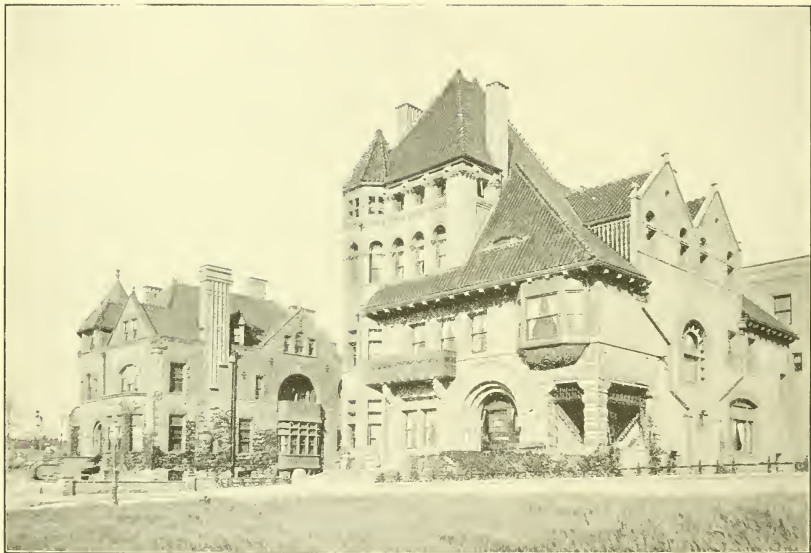


RESIDENCE OF JOHN H. MATTHEWS, ESQ. — Northwest Corner Riverside Drive and Ninetieth Street.

LAMB & RICH, Architects.



RIVERSIDE DRIVE — Looking North from One Hundred and Sixth Street.



RESIDENCE SAMUEL G. BAYNE FRANK FREEMAN, ARCHT.

RIVERSIDE DRIVE AND ONE HUNDRED AND EIGHTH STREET.



ONE HUNDRED AND TWENTY-FIFTH STREET, LOOKING WEST FROM SEVENTH AVENUE.



FIFTH AVENUE, LOOKING NORTH FROM ONE HUNDRED AND TWENTY-SIXTH STREET.



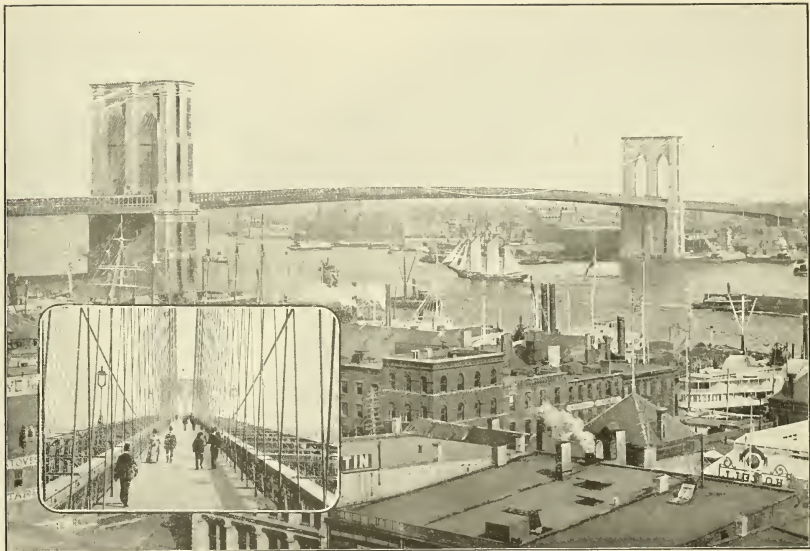
THE JUMEL MANSION — Washington Heights.
(Once Washington's Headquarters.)



THE UNION LEAGUE CLUB — Northwest Corner Fifth
Avenue and Thirty-ninth Street.



THE WASHINGTON BRIDGE—Across Harlem River, from One Hundred and Eighty-first Street and Tenth Avenue to Aqueduct Avenue.



PROMENADE

NEW YORK AND BROOKLYN BRIDGE.



VIADUCT AND HARLEM RIVER, FROM NEW SPEEDWAY -- One Hundred and Fifty-fifth Street.

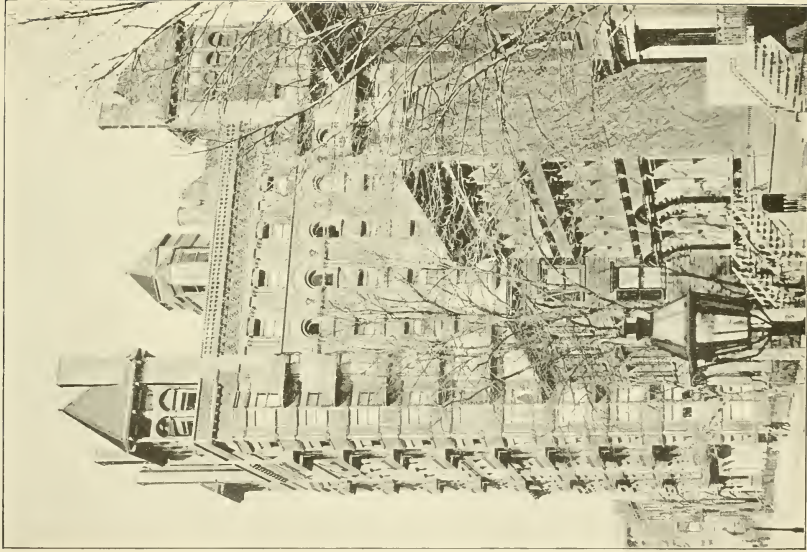


CHURCH AND LIBRARY, SAILOR'S SNUG HARBOR—West New Brighton, Staten Island.

R. W. GIBSON, Architect.



CITY HALL, BROOKLYN - Fulton and Court Streets.



HOTEL MARGARET — Columbia Heights, Brooklyn



STATUE OF HENRY WARD BEECHER.

FULTON AND COURT STREETS, BROOKLYN.

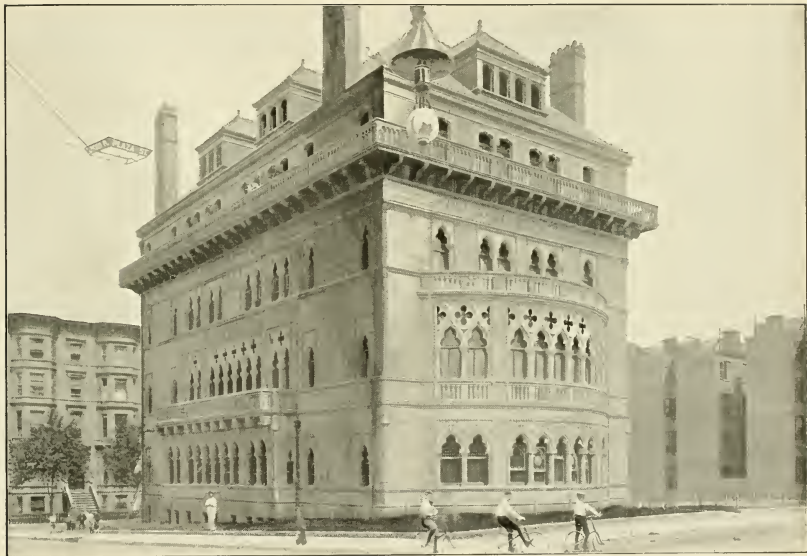


BROOKLYN SAVINGS BANK — Corner Pierrepont and Clinton Streets.

FRANK FREEMAN, Architect.

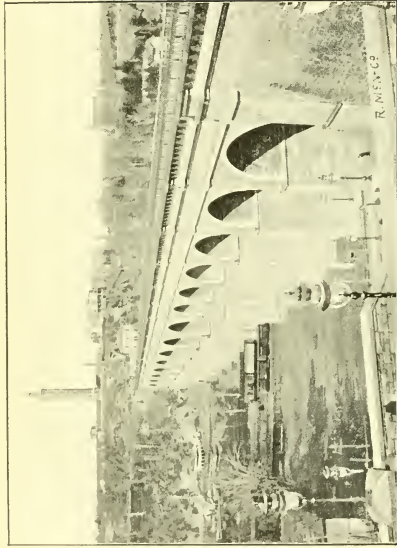


FIRE HEADQUARTERS, BROOKLYN — Jay Street, near Willoughby.



MONTAUK CLUB, BROOKLYN — Eighth Avenue and Lincoln Place.

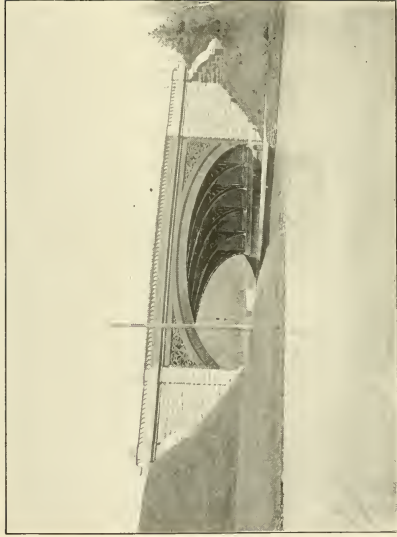
FRANCIS H. KIMBALL, Architect.



HIGH BRIDGE — Across Harlem River at One Hundred and Seventy-fifth Street and Tenth Avenue.



THE MEMORIAL ARCH — Plaza Entrance to Prospect Park, Brooklyn.



BRIDGES — PROSPECT PARK, BROOKLYN.



IN PROSPECT PARK, BROOKLYN.



MANHATTAN BEACH HOTEL.

BRIGHTON BEACH—CONEY ISLAND.

TABLE OF CONTENTS.

	Page.		Page
Abbey's Theater	52	Delmonico's	11
American Museum of Natural History	73	Fidelity & Casualty Co. Building	14
American Surety Co.'s Building	20	Fifth Avenue, Fifty-first to Fifty-second Street	62
American Tract Society's Building	28	Fifth Avenue Hotel	46
Battery Park and New York Bay, from Roof of Washington Building	4	Fifth Avenue, Fifty-first to Fifty-second Street	62
Berkeley School	51	Fifth Avenue, Looking North from One Hundred and Twenty-sixth Street	86
Bolivar, Statue of	18	Fifth Avenue Theater	49
Bridges, Prospect Park, Brooklyn	99	Fire Headquarters, Brooklyn	96
Brighton Beach, Coney Island	101	Fourteenth Street, Looking West from Fifth Avenue	37
Broad Street, Looking South from Wall Street	8	Fourth Avenue, from Twenty-first to Twenty-third Street	44
Broadway and Bond Street to Tenth Street	32	Gansevoort Market	40
Broadway, from Tenth Street to Union Square	33	Grace Church	34
Brooklyn Bridge	89	Grand Central Depot	66
Brooklyn, Fulton, and Court Streets	94	Hale, Nathan, Statue of	24
Brooklyn Savings Bank	95	Hall of Architectural Casts, Metropolitan Museum of Art	71
Casino	52	Harrigan's Theater	51
Central Park, East Drive	69	Herald Building	59
Central Park, Fountain and Lake	72	High Bridge	98
Church and Library, Sailors' Snug Harbor, Staten Island	91	Holland House	75
Church Missions House, Detail	64	Hotel Majestic	76
City Hall, Brooklyn	92	Hotel Margaret, Columbia Heights, Brooklyn	93
City Hall Park and New Buildings on Broadway	26	Hotel New Netherland	67
Coffee Exchange	14	Hotel Savoy	67
College of Pharmacy	61	Judson Memorial Baptist Church	36
Colonial Club	78	Jumel Mansion	87
Columbus Monument	42	Liberty, Statue of	18
Conkling, Roscoe, Statue of	24	Life Building	48
Corn Exchange Bank	15	Madison Square	46
Consolidated Stock and Petroleum Exchange	13	Madison Square Garden	45
Criminal Courts and the Tombs	30	Mail and Express Building	22
Dakota Flats	77	Manhattan Life Insurance Co.'s Building	21

TABLE OF CONTENTS — *Continued.*

	Page		Page
Mathews, J. H., Residence of, Northeast Corner Riverside Drive and Ninetieth Street	82	South Street, Looking South from Coenties Slip	10
May Parties, Central Park	74	South Street, Scenes on	19
Memorial Arch, Brooklyn	98	Southwest Corner of Eighty-third Street and West-End Avenue	81
Metropolitan Club	66	Southwest Corner of Seventy-second Street and West-End Avenue	80
Metropolitan Museum of Art	70	St. Bartholomew's Parish House	61
Metropolitan Opera House	50	St. Francis Xavier Church, Interior of	39
Montauk Club, Brooklyn	97	St. Patrick's Cathedral	65
National Shoe and Leather Bank	29	St. Patrick's Cathedral, Interior of	64
New York Bay, a Misty Morning on	3	St. Thomas Church	56
New York City Hall	25	Temple Beth-El	75
New York Clearing House	11	The Mall, Central Park	68
New York Post Office	23	The Waldorf	58
New York Stock Exchange, Interior of	9	Tiffany, Charles, Residence of	79
Normal College	53	Trinity Church, from Wall Street	12
Ocean Steamers in Berths, North River	17	Union League Club	87
One Hundred and Twenty-fifth Street, Looking West from Seventh Avenue	85	Union Square	38
Oyster Row	41	United States Sub-Treasury	10
Printing House Square	27	United States Trust Co.	18
Prospect Park, Brooklyn	100	Vanderbilt, Cornelius, Residence of	63
Residences, Northeast Corner Madison Avenue and Fiftieth Street	57	Viaduct and Harlem River, from New Speedway	90
Riverside Drive, Looking North from One Hundred and Sixth Street	83	View Looking Northeast from Roof of Office Building, 66 Broadway	7
Riverside Drive and One Hundred and Eighth Street	84	View Looking South from Roof of Office Building, 66 Broadway	6
Sectional Dry Dock and Brooklyn Navy Yard	31	View Looking Southwest from Roof of Office Building, 66 Broadway	5
Seventy-first Regiment Armory	47	Washington Bridge	88
Society of American Artists and Century Club	60	Washington Memorial Arch	35
Some New York Statues	43	West Street	55
South End Blackwell's Island and Work House, Blackwell's Island	54	Windsor Hotel	59

8

LIBRARY OF CONGRESS



0 014 221 579 2 ●