

lowercase history

micromapping the past

minh nguyên • state of the map u.s. 2024

OpenHistoricalMap

(disambiguation)

Open History Map

OldMapsOnline

OpenHistoricalMap

TimeMap

Omniatlas

Histo Atlas

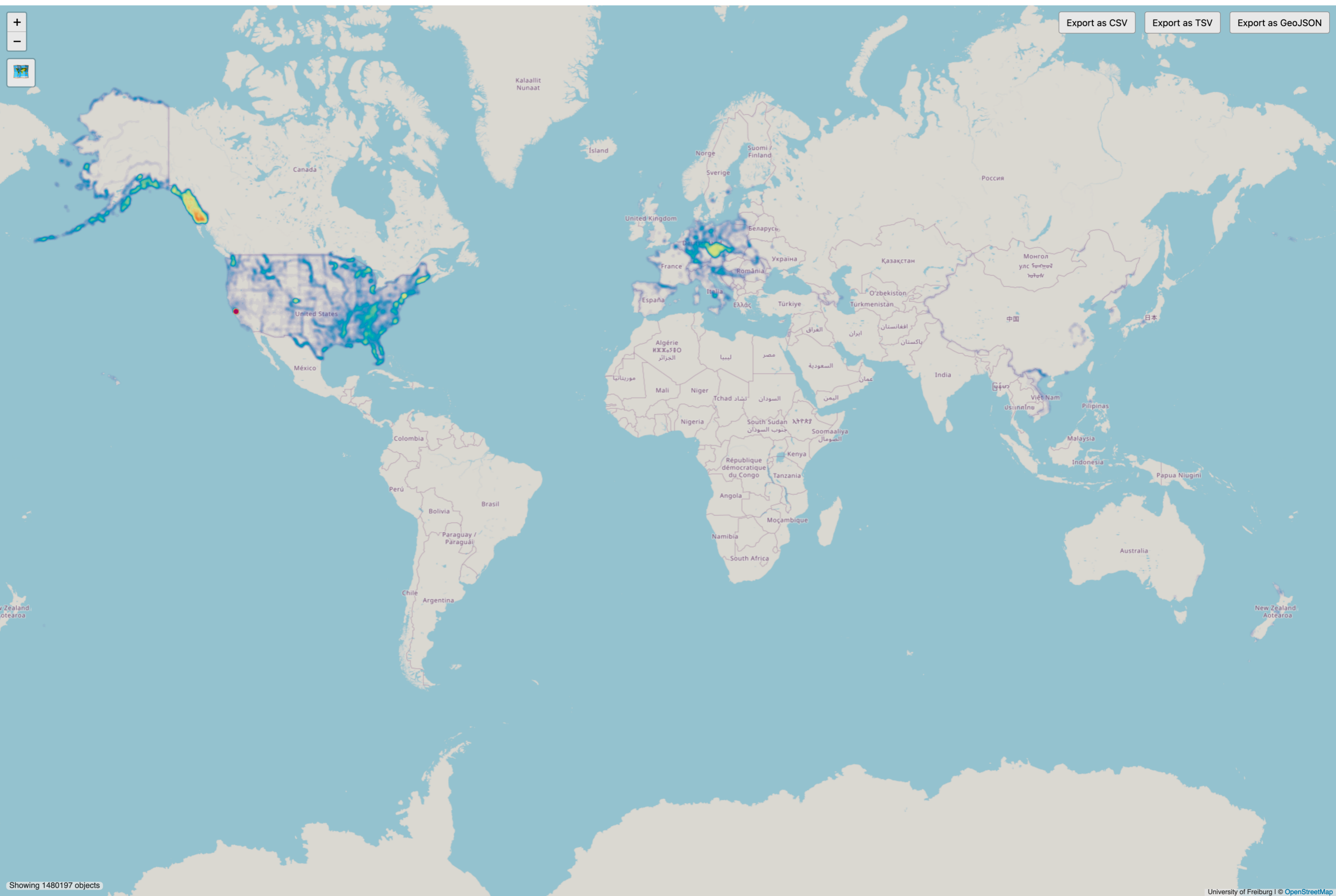
Running Reality

nutrition facts

- collaborative
- crowdsourced
- usable and reusable
- openly licensed
- worldwide
- local



Export as CSV Export as TSV Export as GeoJSON



Showing 1480197 objects



Search

Where is this?

Go

Welcome to OpenHistoricalMap!



OpenHistoricalMap is an interactive map of the world throughout history, created by people like you and dedicated to the public domain.

Learn More

Start Mapping



> **Range** January ▾ 1 ▾ 1824 ▾ AD ▾ - December ▾ 31 ▾ 2024 ▾ AD ▾ Set

June 8, 1924

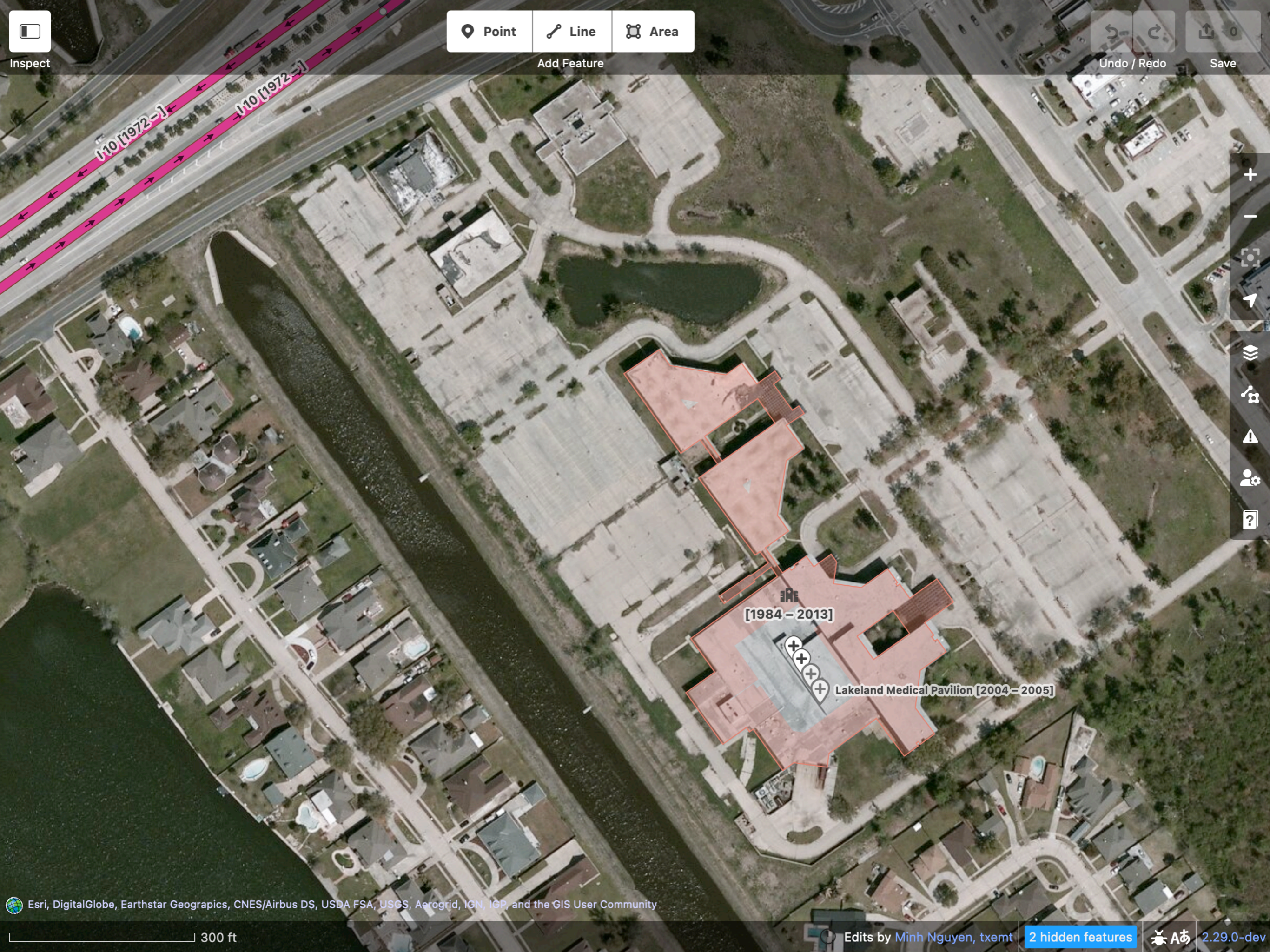
mm/dd/yyyy 1/1/1824 mm/dd/yyyy 12/31/2024

Time Jump 10 years ▾ **Speed** 1 Second ▾ Set

10 m
30 ft

where are you from?

where are you from?



Inspect

Point Line Area

Add Feature

Undo / Redo Save

+
-
[Map Controls]
[Layers]
[Share]
[Alert]
[User]
[Help]

I-10 [1972 -]
I-10 [1972 -]

[1984 - 2013]

Lakeland Medical Pavilion [2004 - 2005]



Inspect

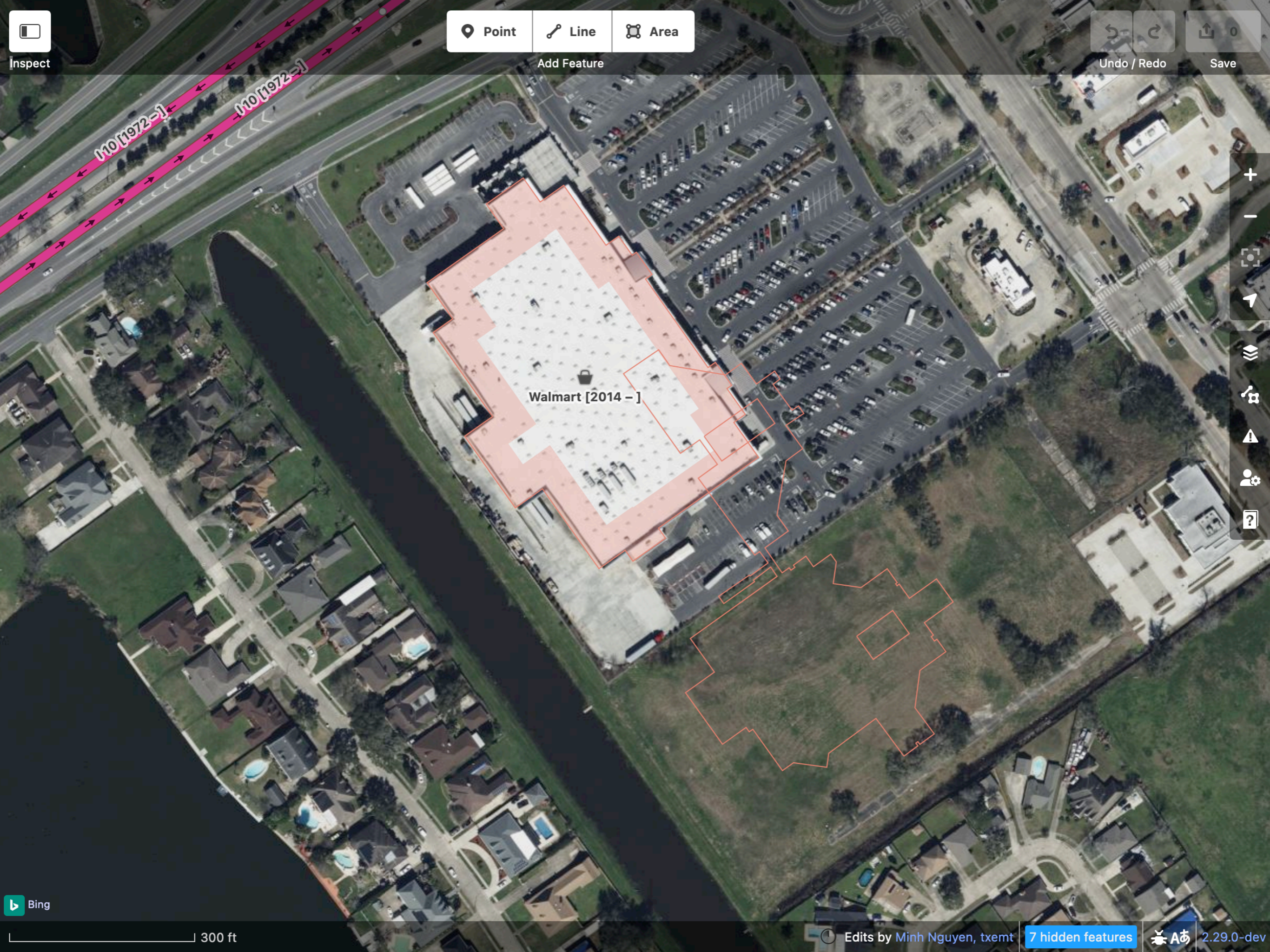
📍 Point
📏 Line
📐 Area

Add Feature

↶ Undo
↷ Redo
📌 Save 0

Undo / Redo

Save



Walmart [2014 -]

+
 -
 📏
 📍
 🗒️
 🌐
 ⚠️
 👤
 ?



300 ft

Edits by Minh Nguyen, txemt

7 hidden features

2.29.0-dev

A photograph of a welcome sign for Loveland, Ohio. The sign is rectangular with a white background and a dark red border. It is mounted on a stone pillar on the left and a stone base. The text on the sign reads "Welcome to" in a small, dark font, followed by "LOVELAND" in large, bold, dark red letters, and "Sweetheart of Ohio" in a smaller, dark font below. The sign is surrounded by green plants and a stone wall. In the background, there is a fence, trees, and a building with a green roof.

Welcome to
LOVELAND
Sweetheart of Ohio

who?

what?

when?

where?

why?

who?

what?

when?

where?

why?



DOWN THE BIKE TRAIL
NEXT TO THE CANOE RENTAL
-TUESDAYS 3-6:30-PM MAY-OCTOBER

JackRabbit

NO PARKING ANY TIME
TWO HOUR PARKING



Millitzer name part of Loveland

Businessman memorialized via alleyway

BY SHEILA McLAUGHLIN
The Cincinnati Enquirer

LOVELAND — For more than 70 years, the “place between the tracks” was George “Gear” Millitzer’s turf. He was born above the dry goods store his family founded in 1917, next to what is now City Hall.

Until 1985, the shop Mr. Millitzer took over from his parents was a place where Lovelanders could expect a firm handshake, friendly chatter about family and baseball, and a fair price on clothes and shoes.

Now, four years after his death and 11 years since he closed the doors to Millitzer’s Dry Goods Store, Mr. Millitzer’s



Mr. Millitzer

Heritage Celebration

Heritage Celebration, Loveland’s biggest bicentennial bash, opens at 9 a.m. Sept. 28 with a model train show at City Hall, sponsored by the Lionel O Gauge Society.

Most activities will center on Nisbet Park, off Taylor Street, although the Greater Loveland Historical Society Museum, 201 Riverside Drive, will be the setting of a noon ceremony to dedicate the restored 1797 Rich log cabin.

The celebration closes after a ceremony at 4 p.m. to dedicate

the bridge on West Loveland Avenue, between Taylor Street and Riverside Drive, to Lt. Col. Thomas Paxton, the city’s founder. U.S. Rep. Rob Portman, R-Cincinnati, will be a guest speaker.

Other highlights that day include:

- ▶ Art Affair, 10 a.m. to 4 p.m., sponsored by the Loveland Artist Club, Nisbet Park.
- ▶ Model A Ford display, noon to 3 p.m., Fraternal Order of Eagles parking lot, Taylor Street.
- ▶ Dedication of Gear Millitzer

Place, 10:30 a.m., in front of City Hall, 120 W. Loveland Ave.

- ▶ Music by the Dorff Family, 11 a.m., Nisbet Park stage.
- ▶ Miniature Loveland village and train artifact display, noon to 4:30 p.m. at the museum.
- ▶ Senior Citizens Kitchen Band performance, 1 p.m. at the museum.
- ▶ Re-enactment of the first Loveland wedding of Elizabeth Paxton and John Donnels, 2 p.m., Nisbet Park dance floor.
- ▶ Air Force Band of Flight concert, 2:30 p.m., Nisbet Park stage.

name will again have a prominent place in historic downtown Loveland.

On Sept. 28, council will dedicate the unnamed alley between the former dry goods shop and City Hall as Gear Millitzer Place. City officials aren’t sure that a street sign will be ready for the occasion. If not, one will be erected later this year, Councilman Rob Weisgerber said.

The 10:30 a.m. ceremony is part of the Heritage Celebration, Loveland’s biggest bicentennial

event. Mr. Millitzer’s widow, Jeanne, of Symmes Township, and two of three sons, Andy of Terrace Park and Tom of Zwingle, Iowa, will attend.

The Loveland Downtown Council suggested the alley dedication. Mr. Millitzer also helped found the Loveland Kiwanis Club.

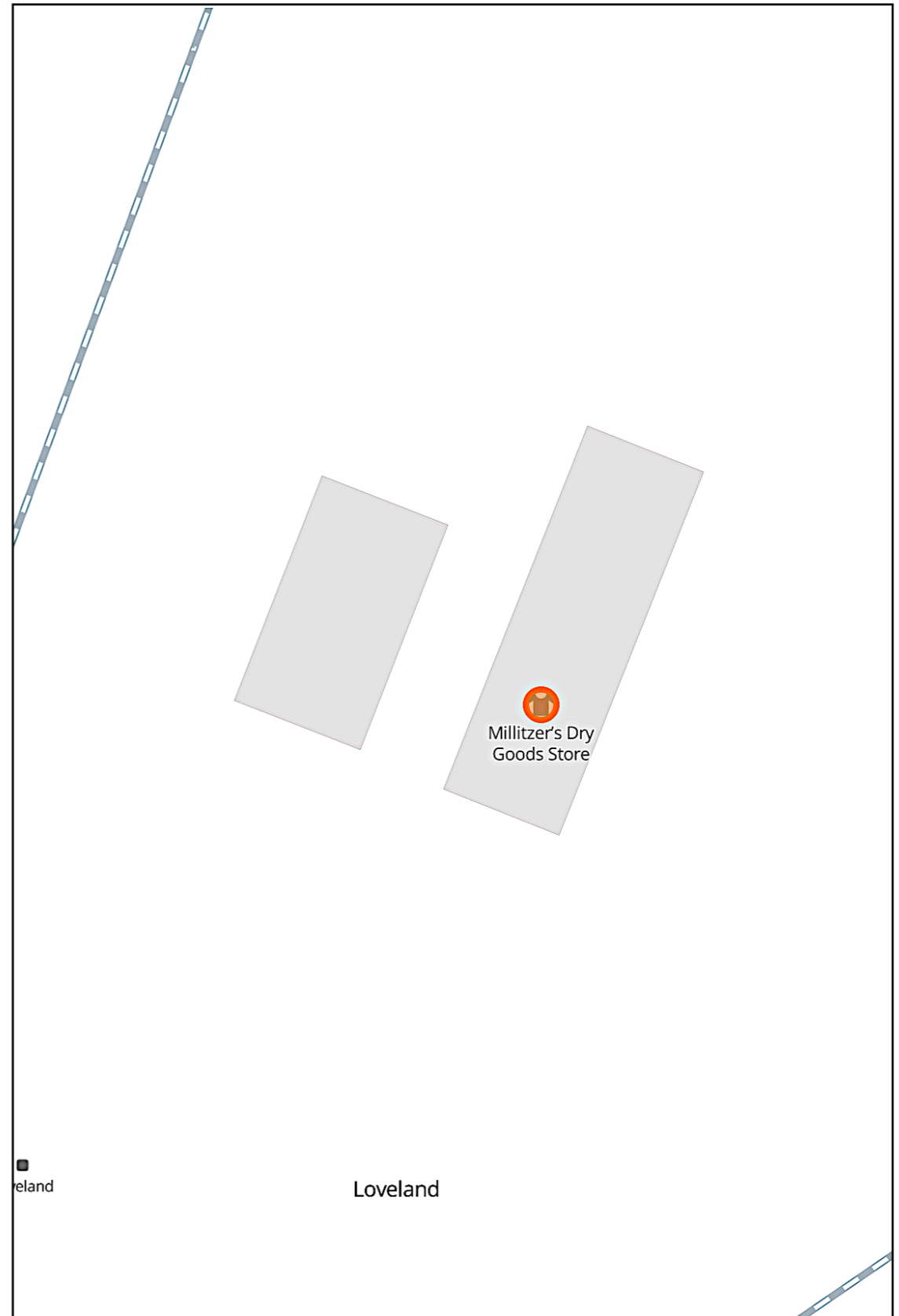
“To me and many people who lived and worked down here, he was kind of the spirit of downtown Loveland at its best,” said Downtown Council President Jo-

seph Schickel, whose mother suited him in clothes from Millitzer’s.

Mr. Millitzer’s relatives ran several businesses around the turn of the century in downtown Loveland, including a bakery and confectionery on Broadway Street and a saloon at Railroad Avenue, where Tequila Jack’s Saloon now operates.

Andy Millitzer said his family is honored that Loveland would

(Please see LOVELAND, Page B4)





Inspect

Point
Line
Area

Add Feature

Undo / Redo
Save

North Karl Brown Way [1997 -]

West Loveland Avenue [1960 -]

Loveland Bike Trail [1984 -]



Bishop's Quarter [2018 -]

Joseph Kinnebrew Gallery [2002 - 2003]

Fredgwick Gallery [2003 - 2004]

Miss Annabelle's Tea Parlor & Gifts [2002 - 2009]

Tano Bistro [2009 - 2017]

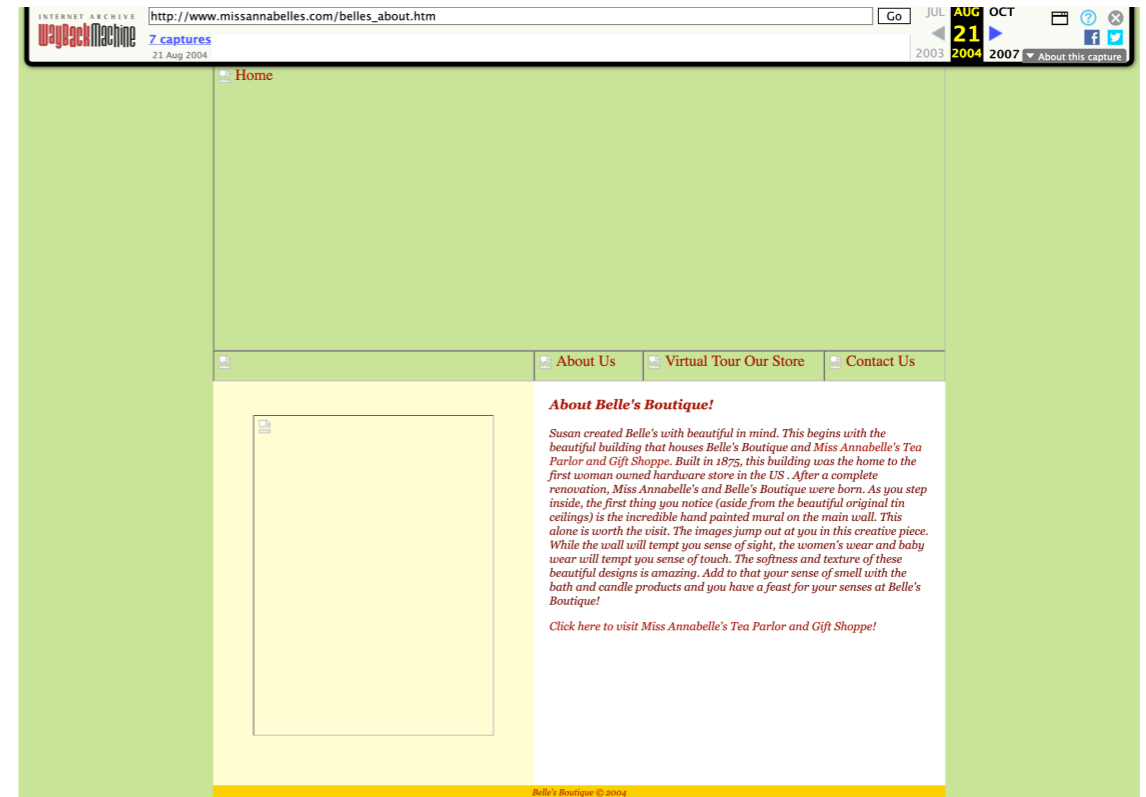
Loveland Café [2011]

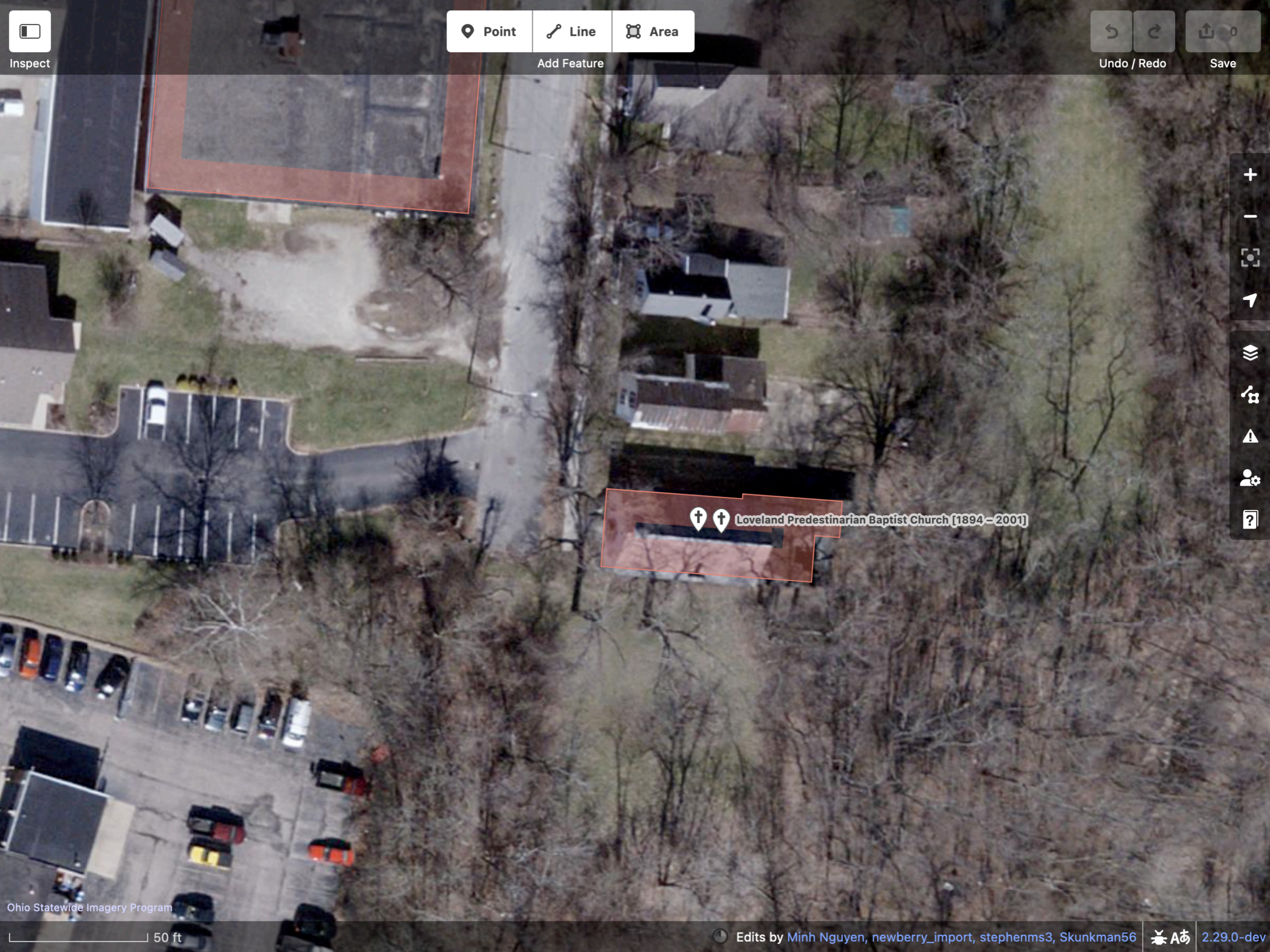
William Schickel Gallery [2004 - 2009]

Loveland Mill [1999 - 2006]

Ramsey's Trailside [2018 -]

+
-
📏
📍
🗺️
🏠
🔍
👤
?





Point
Line
Area

Add Feature

Undo / Redo
Save



Loveland Predestinarian Baptist Church [1894-2001]

Inspect



Public domain (1926)
Courtesy of *Loveland Magazine*

people

places

things



© 2011 Alyssa Wigant
All rights reserved.
150 2nd
San Jose, CA 95110

Mural by Alyssa Wigant for the City of San José
Photo © [networklanman](#), CC BY-SA 4.0



六街唐人埠
1887-1931
SIXTH STREET
CHINATOWN
HEINLENVILLE



散那些

"SAN-DOY-SAY"

唐人埠

"TONG YUN
FOW"

No group's history should be defined only by the awful aspects of its past, [...] however deeply rooted in History with a capital *H*. If the scale is taken down a notch to the neighborhood or family level, [...] other stories can be found—life-affirming stories of how sometimes in the midst of what seems to be national craziness, individuals step forward and quietly work for good.

Praetzellis, Mary; Praetzellis, Adrian (2011). "Cultural Resource Management Archaeology and Heritage Values". Historical Archaeology. Society for Historical Archaeology. 45 (1): 86–100.

DELLA RIVIERA

1871-1958

1871-1958

EMIL BARBANO

29.26

WINDY

WINDY





6-12-97

**how long have you
been around?**



Les
Banh Mi



Vietnamese Sandwiches



Les
Banh Mi

OPEN
ITEMS

putting it all together

- prior art
 - historical atlases
 - topo maps
- other published works and media
 - books
 - academic journals
 - newspaper archives
 - NRHP submissions
 - phone directories
 - Wayback Machine
- observation
 - ground truth (field surveys)
 - remote sensing (aerial imagery)
 - oral histories
 - nostalgic Facebook groups
- data exhaust
 - city permit database
 - property records
- inference



Little Miami River

Little Miami River

Little Miami River

O'Ban non Creek

White Pillars

White Pillars

Minh Nguyen on OSM and OHM

@1ec5 on OSMUS Slack

@mxn@wikis.world on Mastodon

notes.1ec5.org