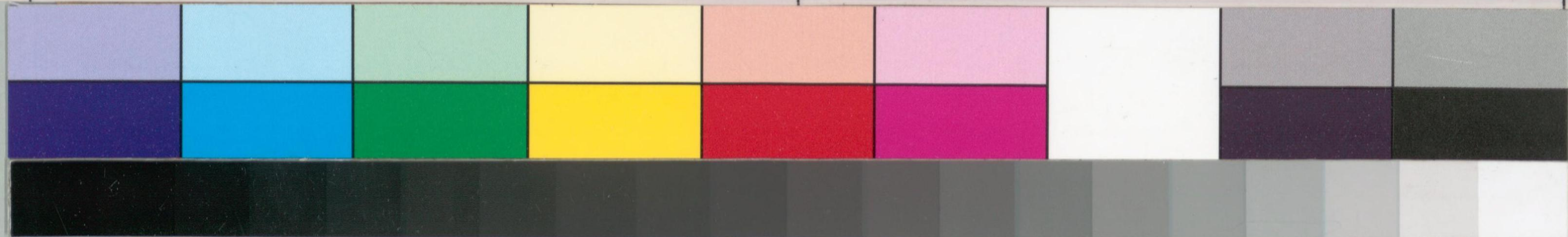


Handwritten Japanese text on a vertical strip of aged paper, likely a document or letter. The text is written in a cursive style (sōsho) and is mostly illegible due to fading and the angle of the strip. Some characters are faintly visible, including what appears to be '渡辺' (Watanabe) at the top and '文書' (Bunsho) at the bottom.





明く為舟道

と成りて修定

又并之年を共済

しと大いに公之を

能くしと握るる

下由て清斗書

名をいふる

ありとあり

廿七日

海軍