

Historic, Archive Document

Do not assume content reflects current scientific knowledge, policies, or practices.

69, 61 1930

Announcement

Nineteen Hundred Thirty



Better Seeds - - Better Crops

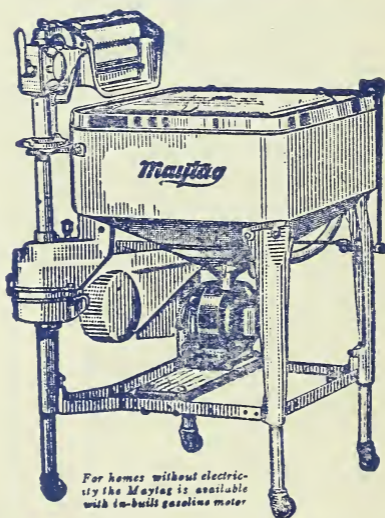
The Farmer's SEED and SUPPLY Store

F. E. SKINNER

57 N. Broad St. Norwich, N. Y.

ONLY by actual test can you appreciate how the Maytag washes a tub of clothes in 3 to 7 minutes; how it washes dainty garments as gently as if washed by hand; how it washes heavy apparel with unbelievable thoroughness. The Maytag Gyrafoam has the largest hourly capacity of any home laundry unit in the world; it washes 50 lbs. (dry weight) of ordinary family washing per hour.

See the recent improvements which have made the Maytag better than ever.



For homes without electricity the Maytag is available with in-built gasoline motor

MAYTAG WASHING MACHINE

The Maytag Washer is made with small gasoline engine built underneath for farm use where electricity is not available.

Give us a chance to demonstrate the convenience and efficiency of the Maytag.

ANNOUNCEMENT

For the Year of 1930

In again making my annual announcement by means of this folder, I wish to call attention to the nationally known merchandise on which I hold dealer's franchise in this territory, namely:

Maytag Washers.

Atwater Kent Radio.

Crosley Radio.

F. E. Myers & Bro. Water Systems.

Drew Line-Poultry Equipment.

John Deere Farm Machinery.

There is a certain sense of satisfaction in being the local representative of firms manufacturing goods of such well known high quality, for there goes with each sale a feeling that the purchaser is getting good value for every dollar expended on the original purchase with certain assurance of prompt repair service during the life of their product.

This catalog is our salesman. We respectfully call the attention of customers to the many items mentioned in the folder and accompanying leaflets. A careful inspection will be to your advantage.

We wish to assure customers, old and new, that we believe your success is ours. You know what good seed means, so do we. In making our purchases we have in mind supplying seed that will give the best crop results and that are adapted to this territory. You can be assured that we are doing our best to please you.

Among our garden seeds showing marked superiority in comparative tests are Cabbage, Cauliflower, Beet, Mangle, Carrot, Celery and Radish. Most of our stock of these, as well as other vegetable and most flower seeds are imported from the grower in Denmark.

While I cannot give a warranty covering the crop results of my seeds, I can assure customers that I have obtained them from most reliable sources and believe them true to type and of high germination.

SEEDS



Another season's experience with our imported seed has served to prove their superiority, a larger proportion of our seed stock will therefore be imported this season. This will include a greater part of our flower seed as well as practically all vegetables, particularly root crops. This seed is received direct from one of the oldest and most reliable growers in Denmark.

Egyptian Blood Turnip—Early, turnip shaped, flesh deep blood red.

Crosby's Egyptian—Smooth and round in form, matures very early.

Early Bassano — Medium early; flesh pink and light yellow.

Detroit Dark Red — The standard main crop variety, on account of its extra deep coloring is used extensively for canning.

Big Value—Pkg., 5c; oz., 15c; 1-4 lb., 35c.

MANGELS

Danish Tarjoe—Larger and somewhat darker in color than Golden Tankard; lb., 65c.

Golden Tankard—One of the best yielding and most desirable mangels; per lb., 75c.

Giant Half Sugar — An excellent cooking beet when small, and attain a size of 10 to 12 in. Very desirable for poultry feeding. Per lb., 65c.

Sludstrup—One of the largest growing and most desirable for stock feeding. Per lb., 65c.

LETTUCE

Grand Rapids—One of the best early varieties and if transplanted will produce compact bunches of very tender fringed leaves.

Prize Head — Large, loose heads of finely crimped bright green leaves shaded with brown.

Way-a-Head—An early heading variety in which the center is finely blanched to a rich buttery yellow.

Big Boston—The largest heading variety, particularly desirable for late season growth, as it heads up much better in cool weather.

Romaine or Cos Lettuce—Makes a compact up-

right growth, leaves blanched white inside, very crisp and tender.

All varieties, pkt., 5c; oz., 15c.

CUCUMBERS

Early Cluster—One of the best and most prolific pickling varieties.

White Spine—Very uniform in size and particularly desirable for slicing.

Fordhook Famous—One of the best of the Burpee's specials, attaining a length of 12 to 14 inches, always firm, crisp and of most delicious flavor.

Long Green—Combines good pickling and slicing qualities.

Davis Perfect—Very dark green, resembling hot-house grown cucumbers, as they have few seeds and are excellent slicing variety.

Big value packet, 5c; oz., 20c.

SQUASH

Giant Crookneck—As early as the common while they attain much larger size.

True Hubbard and Golden Hubbard—Excellent keepers of splendid quality. Big value packet, 5c; oz., 20c; lb., \$1.35.

BEANS—WAX AND GREEN PODDED

Wardwell, Kidney Wax — An early flat podded variety, one of the best.

Burpee's Pencil Pod Black Wax—Very productive, early and entirely stringless.

Burpee's Brittle Wax — The earliest of all wax beans, round, fleshy pods, of superb quality.

Bountiful—Flat green pods, early.

Refugees—Round green pods, very desirable for canning.

Henderson's Bush Lima—Earliest and most dependable lima.

Big value packet, 10c; lb., 30c.

POLE BEANS

Kentucky Wonder or Old Homestead — Long green pods, very productive.

Golden Cluster Wax—Flat, wide pods, stringless and of excellent flavor.

Early Leviathan—An early pole lima.

Big value packet, 10c; lb., 40c.

ONIONS—BURPEE'S SEED

Prizetaker — Somewhat later but much larger than the Danvers.

Big value packet, 10c; oz., 30c; lb., \$2.50.

Yellow Globe Danvers—The best table and gen-

eral market variety. Packet, 10c; oz., 25c; lb., \$2.00.

Southport White Globe—One of the best keeping and best yielding white onions. Big value packet, 10c; oz., 40c; lb., \$3.25.

Red Weatherfield—The standard variety, always a desirable cooking onion. Big value packet, 10c; oz., 25c; lb., \$2.05.

Bermuda Onion Plants—These plants are grown in Texas, are put up in bundles of 100 plants, can be set as early as sets and bring a crop of mild Bermuda type onions earlier than they can be grown in any other way. Price per hundred, post paid, 45c; per 1,000, \$3.00. Send orders early.

CELERY

Golden Self-Blanching — The best early self-blanching variety. Packets, 10c; 1-2 oz., 40c.

White Plume—An excellent early sort, but not desirable for keeping. Big value packet, 10c; 1-2 oz., 20c.

TOMATO

Bonney Best—Early, large fruit, solid red and do not crack.

Chalk's Early Jewel — One of the earliest and smoothest light red sorts.

Earliana — The standard early variety and one of the earliest.

Matchless—Best large-fruited main crop tomato.

Ponderosa—A very large, dark red, main crop variety.

Golden Queen—Standard main crop yellow fruit-variety.

Big value packet, 5c; oz., 40c.

CARROTS

Chantenay or Model—Finest quality, especially desirable for canning.

Danvers Half Long — One of the best market varieties.

Amsterdam Forcing—An excellent quick growing variety.

Large White Belgian — Grown extensively for rabbit feeding.

Big value packet, 5c; oz., 15c.

RADISH

Earliest Scarlet Button—Small, extra early.

Scarlet White Tip—Quick growing and a good market variety.

White Icicle—Very crisp and tender, retaining these qualities much longer than other varieties.

Winter Radish—Round Black Spanish.

Big value packet, 5c; oz., 15c.

TURNIP

Purple Top White Globe—Desirable as a table feeding variety.

White Rutabaga — One of the best large table varieties.

Yellow Rutabaga — An excellent cooking sort, preferred by many to the white. Either of above, oz., 10c; 1-4 lb., 20c; 1 lb., 75c.

Long White Cowhorn — A long yellow feeding turnip, 1 lb., 60c.

Purple Top Strap Leaf—Good for cooking when small, and a desirable feeding variety. Oz., 15c; 1-4 lb., 35c; 1 lb., 50c.

Our seed is put up in 5c packets, containing as large quantity as any of the commission seed firms, many of whom sell their packets at 10c. Seed is put up as used, from new stocks, thus assuring our trade of fresh seed of high germination and strong vitality.

We have at hand the catalog of one of the larger seed houses which devotes considerable space to special prices to market gardeners. On every item listed our regular retail price is as low if not lower than their special price.

“Good seed is cheap at any cose,
Poor seed is time and money lost.”

FIELD SEEDS

Our stock of field seeds have been selected with care, are the best obtainable in every instance and are seeds adapted to this territory. By early and ample purchases we are well prepared to supply customers with highest grade seeds of proven purity and good vitality.

We continue direct importation of vegetables and flower seeds from the same source as in former years; one of the largest growers in Denmark. This assures our trade of uniform quality, high germination and dependability of type.

PEAS

Nott's Excelsior—One of the largest pod dwarf varieties and one of the best yielders.

Premium Gem—An improved variety, producing well-filled pods.

Gradus — The best and earliest of the larger growing varieties.

Thomas Laxton—Similar to Gradus, both growing about 2 to 3 feet.

Laxtonian—Largest pod of the dwarf varieties; used extensively as an early market variety.

Dark Pod Telephone—The most desirable later variety.

Bliss Everbearing — Very prolific, continues to bloom and bear longer than most varieties.

Champion of England—Big yielding late variety. Per lb., 30c.

Special prices in quantity.

Write for prices by the bushel for field planting.

SWEET CORN

Golden Bantam	per lb., 30c
Black Mexican	per lb., 25c
Early Minnesota	per lb., 25c
Howling Mob	per lb., 25c
Red Cob Cory	per lb., 25c
Peep-O-Day	per lb., 25c
Hickok Improved	per lb., 25c
Stowell's Evergreen	per lb., 20c

Either of the latter varieties for field planting at \$4.00 per bushel.

There is a big shortage of genuine Danish seed this year. We apparently have enough to supply our trade, but would advise placing orders early.



OUR IMPORTED DANISH BALLHEAD CABBAGE REPRODUCED FROM ACTUAL PHOTOGRAPH

We have imported our cabbage seed direct from the growers in Denmark for the past seven years, learning by experience that this seed was more uniform in quality, was true to type and always of high germination.

Tests made by Cornell have shown our seed free from disease and in two variety tests conducted by the State College in 1924, Ohlsen's seed, which we sell, showed heaviest tonnage out of 17 strains of imported and domestic Ballhead seed used in these tests.

Ohlsen's seed also stood the highest in the 1926 test.

The growers of this seed state that it is free from disease; tests made by Cornell have proven it so. There is, therefore, no need of treating the

seed, which process so frequently injures the germination.

Aside from the Ballhead we import several varieties of early cabbage, including the Copenhagen Market. Another cabbage which we have found a better yielder than most reds is our Red Kissendrup. This is a heavy yielding, dark red strain, which produces very heavy tonnage.

When bought in even pounds the Ballhead seed will be delivered in sealed bags, fractions of a pound are resacked.

Seed will be sent post paid at the following prices:

	1 lb.	½ lb.	¼ lb.
Danish Ballhead	\$3.50	\$1.80	\$.95
Copenhagen Market	3.60	1.90	1.00
Red Kissendrup	5.00	2.65	1.40

Our Cauliflower seed is from the same sources as our cabbage. We have the Early Snowball, Dwarf, Erfurt and Large Danish or Dry Weather.

As there is some demand for home grown Ballhead seed, we have this year bought some of this from one of the largest and recognized as the best growers in this country. We would be glad to have growers try out this seed.

Price, \$5.00 per pound.

FIELD SEEDS

Clover — Both mammoth and medium Red "Crown" and "Pinetree" brands and "Imperial" Alsike. This is all American grown seed and the brands indicate the quality.

Timothy — We handle nothing below Conklin's "King" and Craver-Dickinson's "Pinetree" brand in quality. These grades are 99.60 per cent pure.

Canadian Hardy Alfalfa — The Ontario Variegated Alfalfa is moderate in price and has been proven by extensive experiments by the State College to be well adapted to our growing conditions. This seed costs less than Red Clover.

Canadian Grimm Alfalfa — This is hardy seed and will withstand our severe winters. Both the Variegated and Grimm are received in sealed bags and are certified.

There is a serious shortage of hardy Alfalfa seed this year, particularly Canadian grown.

By making a fortunate early purchase of Ontario Variegated we will have an ample stock of this as well as Canadian Grimm.

White Blossom Sweet Clover — This does well under favorable conditions, is particularly desirable for pasture and is used very successfully when

sown in corn at last cultivation, providing fall and early spring pasture or is a big soil builder when plowed under.

Farmogerm — A seed and soil inoculant, improves the growth of all legumes. Your soil requires nitrogen and a well inoculated legume crop is the best and cheapest way to provide it. Farmogerm is put up in one and two acre sizes.

Pasture Mixture — We have a special pasture mixture containing the proper proportion of early grasses, desirable clovers and those grasses which will withstand dry weather and late summer conditions.

Special Lawn Mixture—Made up of those grasses which provide a short thick growth, also adapted to shady places. Our mixtures are made up of the best varieties, some of them imported, for producing a thick velvety lawn.

Other grasses which we carry in stock are Red Top, Orchard Grass, Kentucky Bluegrass, European and Creeping Bent, Sheep's Fescue, Wood Meadow Grass, White Dutch Clover, Alsike and White Dutch mixture, making a desirable pasture clover; also Alsike and Timothy mixture.

SEED GRAINS

Early Wonder Oats	Ithacan Oats
Oderbrucker Barley	Alpha Barley
Marquis Wheat	Cornellian Oats
Canadian Swedish Oats	Japanese Millet
Speltz or Emmer	Buckwheat

CANADIAN FIELD PEAS

**INOCULATE THIS
SEED WITH
FARMOGERM**

Our seed is Michigan grown, of superior quality, and carefully milled.

Sown with oats and winter vetch these peas produce an abundant crop, which makes most valuable ensilage, or if allowed to come nearer maturity before cutting, makes desirable hay. If seeding is done with this crop, the vetch makes a valuable addition to the clover hay the following year. Canada Peas are a legume and improve the soil on which they are grown.

WINTER OR HAIRY VETCH

**INOCULATE THIS
SEED WITH
FARMOGERM**

Vetch is equal to Alfalfa in feeding value and being a nitrogen gathering plant, it improves rather than impoverishes the soil.

VETCH

Sown with oats or oats and peas for silage, or for

hay, vetch is a valuable crop. We have both the spring and winter varieties, but recommend the latter, as it does better in this locality, and, being a biennial, gives a good crop the second year.

WHITE MARROW PEAS

An excellent crop with oats for early cutting, as they make an earlier and more abundant growth than Canada's.

SUDAN GRASS

Coming into general use within the last two years, Sudan Grass has already demonstrated its value as a forage crop for hay. It makes a larger growth than Millet, will produce two crops and cattle prefer it to any other kind of Millet.

SOY BEANS MEAN MORE CASH

Instead of waiting for the price of milk to go up, start now to produce milk at lower cost. Three crops that will help you do this are Alfalfa, Root crops, such as Mangels, Turnips, Cabbage or Soy Beans. The real value of the latter crop is just being realized.

Soy Bean hay, cut before beans have ripened, has a greater value in protein and fats than Alfalfa hay.

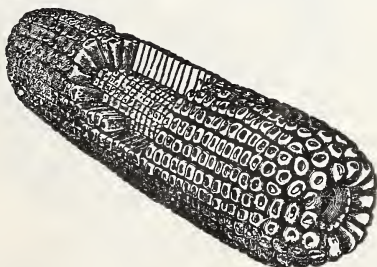
Soy Beans, cut green and packed with corn for silage, will make a perfect ration of much greater value than corn alone.

Soy Beans, when planted with corn, aid its growth rather than curtail it; the nitrogen gathered by the beans becomes available for the corn.

Sunflower is a most desirable crop for ensilage; cut when about one-fifth in seed before stalks become hollow, it compares with Alfalfa for feeding value.

Dwarf Essex Rape — Particularly desirable for hogs, hens or sheep. Makes a quick growth and can be pastured down or mown repeatedly.

COME TO US FOR GOOD SEED CORN



ENSILAGE CORN

Our principal sales of corn for silage are the Sweepstakes type. Our stock of this superior corn comes to us from one of the largest seed corn houses, which is equipped with every facility for curing and handling corn. This insures clean seed, properly graded and of dependable germination. The Sweepstakes corn gives a satisfactory green tonnage, ears heavily and reaches a desirable stage of maturity at the time of silage harvest.

We have assurance from our growers that the quality as well as germination of our West Branch Sweepstakes seed will be up to the highest quality of former years.

Lancaster County Sure Crop—This is a Southern Pennsylvania grown, early maturing variety of the Sweepstakes type. It makes a growth of stalk, leaves and ears similar to this variety and matures ears to about the same degree.

Long Island Luce's Favorite—Is too well known to need comment. Our stock is from the same dependable source as in former years, and the quality equal to the best.

Conklin's Early Wonder—An excellent early ensilage variety of the Sweepstakes type put out by E. W. Conklin & Son.

Blue Mountain Ensilage—A superior strain of the large Eureka corn. This seed is Virginia grown, is selected for seed purposes and is the largest growing ensilage corn.

In addition to the above we have the Sweepstakes of the Consolidated Record Association, as well as Leaming, Pride, Gold Mine, Smoky Dent and Eureka. All are selected seed stock.

CERTIFIED SEED POTATOES

White Rurals—This variety takes the place of No. 9's, Heavy Weights, Rural New Yorkers, Sir Walter Raleighs and some other less known strains, which are practically the same and have been standardized by the New York Potato Growers' Association under the name of Smooth Rurals or White Rurals.

Irish Cobblers — One of the best early White varieties, always has a good market for seed stock.

Rural Russets — An excellent cooking variety and good yielder.

In addition to the above certified seed we always have home grown stock of standard varieties.

FIELD OR FLINT CORN

King Philip—This is a red glaze corn, making large growth of stalk and yielding far ahead of most yellow varieties; a ninety day corn.

Sanford White—Our stock is early and will mature in almost any locality.

Eight and Twelve Yellow Flint—Many people prefer yellow corn, and it is always dependable. We have a good seed.

We handle only locally grown flint corn. Experience has shown that this corn when shipped in from other localities is not apt to mature here. We therefore sell only home grown seed.

On account of a constantly changing market and the desire to quote closely at all times, we do not issue price with catalog. The enclosed card will bring information on any items you may be interested in. If you drive in for seed you may rest assured you will find what you want and that the price and quality will be right.



We will have an assortment of ten colors of Hybrid perpetual blooming roses. Each one separately wrapped selling at 60c each. Also an assortment of best climbers at 50c each. These are two year old bushes and excellent value.



NURSERY STOCK

Our fruit and ornamental trees and shrubs are

obtained from one of the best state nurseries and are sold at prices much below those charged by canvassers. Prices on standard apples in lots of 10, 85c; special varieties, 90c. Beside all the older standard sorts we can supply the Delicious, Che-nango or Strawberry, Wealthy, Stark, etc., in fact, anything in Apple, Pear, Plum, Cherry or the small fruits.

BERRY PLANTS

Strawberry Plants: Dr. Burrill, Gibson, Senator Dunlap, 35c for 25, \$1.15 per hundred; Black Raspberries, Kansas and Plum Farmer, 75c per doz., \$3.00 per hundred; Columbias, \$1.25 per doz., \$6.50 per hundred. Prices of any other kind of berries or different varieties of the above quoted on request; special prices in quantity.

BULBS AND ROOTS

Asparagus roots, Conover's Colossal and Wash-ington, \$1.75 per hundred. Dahlia, Gladiolus, Canna, Peony, Phlox are carried in stock. Other bulbs obtained quickly at catalog prices.

Cyanogas — Cyanide gas for killing rodents in burrows and for woodchucks.



Semesan — A mercurial disin-fectant for the control of seed plant and soil diseases, a preven-tive of many crop diseases, an aid to better germination of seed and stronger vitality of plants.

FERTILIZERS

Sheep's Head Brand of pulverized sheep manure. This is a complete ferti-lizer, especially desirable in treatment of lawns, as it furnishes all the ferti-lizing elements necessary together w i t h humus, without t h e annoying

features of the stable manure and without the dan-ger of spreading weed seeds. This material costs less and does the work better than any other lawn fertilizer.

We also carry Bone Meal, Nitrate of Soda, Plant Food and special lawn and garden fertilizer as well as general field fertilizer.



SPRAYING MATERIALS AND INSECTICIDES

Pyrox — Kills all eating insects and prevents blight. A combination of arsenate of lead and Bordeaux mixture put up in convenient form. A general insecticide and fungicide.

Dry Powdered Lime and Sulphur—For dormant spraying of fruit trees and in combination with other material for later spraying.

Dry Powdered Arsenate of Lead — Arsenate of zinc, Bordeaux and combination of the latter, making a desirable general spray material to be used for dusting or spraying; also Sulphate of Copper, Lime, etc.

We sell the General Chemical Company's "Orchard Brand" spraying material, and would be glad to quote in quantity to those interested.



"Black Leaf 40" Nicotine Sulphate (40 per cent Nicotine), guaranteed—The standard contact insecticide for spraying fruits, vegetables, rose bushes, plants, etc., in the control of aphids, leaf hopper and any sucking insect. It is absolutely effective without any possibility of injury to the plant. 1 oz. bottle, sufficient for 6 gallons of spray, 35c.

We have this in larger containers for killing lice on poultry.

MASTER PLANT SETTERS

These setters are well and favorably known, are a great labor saver and do the work as well as it can be done by the slower hand method.



Brown Sprayers, a complete line of hand and power sprayers. As we have sold these for a number of years we carry packings, valves, etc., so we are in a position to render service.



GALVANIZED WATER TANKS

Round end storage tanks from 2 to 8-barrel capacity or larger. These tanks are made of heavy

galvanized iron with angle iron frame and supports, well riveted and soldered. Suitable for use as stock watering or for sap or water storage. Reasonably priced.

Harrow Points—Double wear points can be attached to any harrow tooth. Price, each, 35c. Harrow shoes with bolts, \$2.75 per set.

GOODYEAR MECHANICAL RUBBER GOODS

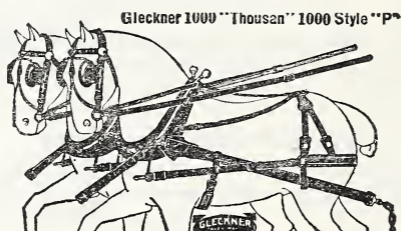
Glide and Klingtite belting in endless and cut length. These belts are frictioned surfaced, will not shrink or stretch and stand up to the work for years of satisfactory service.

We also have Sawyer endless belts and have a large stock of second-hand leather belting in all widths up to 19 inches.

STEWART CLIPPING MACHINES

We now have a Stewart Electric Clipper at \$45.00. Also the ball bearing enclosed type hand clippers.

We now have a power clipper grinder, doing this work for 40c per pair.



Gleckner's 1000 harness and other makes of standard team harnesses, collars, blankets, saddles, etc.

We have a large stock of army harness parts, strap work and findings and standard army harness with breeching, \$42.00.

We have a large stock of army halters, ties, collars and extra harness parts.

We carry dog collars and harnesses.

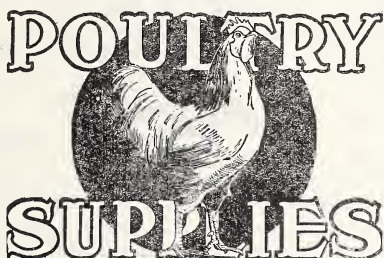
PERFECTION MILKING MACHINE

We sell and service this well and favorably known milker as we have for the past nine years. We also sell the Uebler Milker, which is well and favorably known in this locality.

Should it be necessary for you to make a change in either engine or milker pump investigate the Taylor Vacuum Engine. This does away with pump and gives a most satisfactory engine.

FOR THE DAIRY

Monarch and B-K sterilizing solutions. Wyandotte Cleanser. Cotton discs for strainers. All metal milk stools, Milking Machine hose, teat dilators, Cow hobbles, Cattle ties, Cow pokes, Stock food, Kow Care, Bag Balm, Milk Scales.



POULTRY SUPPLIES AND DAY OLD CHICKS

Last season we distributed several thousand chicks from one of the largest hatcheries in the country. We are selling their stock again this year, as we found them strong, healthy chicks, which proved to be good type, well bred and good layers.

Following are the prices, 100 per cent live delivery guaranteed:

	50	100	500	1000
S. C. White and Brown Leghorns	\$8.00	\$14.00	\$63.00	\$122.00
Buff Leghorn and Anonas	8.50	15.00	68.00	128.00
R. I. Reds	9.25	15.50	74.00	144.00
Barred and White Rocks and Wyan- dottes	9.50	16.00	67.00	128.00

For more complete list of breeds handled, as well as other poultry supplies, we call attention to enclosed leaflet.

POULTRY SUPPLIES

Brooders—Electric, Oil and Coal.

Incubators—Oil and Electric.

Thermometers for incubators and brooders.

Thermostat wafers—Egg Graders—Fountains—

Feeders — Hoppers — Putnam Stoves — Brooder

Heaters—Leg Bands — Carbolinium — Dr. Hess'

Remedies.

BIRDS AND SUPPLIES



A large assortment of brass and enameled cages and stands, also brackets, bath and feed cups, springs, etc. Max Geisler's roller seed, remedies and all bird products. Song restorer, little bird food, bird grit and all bird seed in bulk.

St. Andreasberg Rollers; the finest singing canaries.

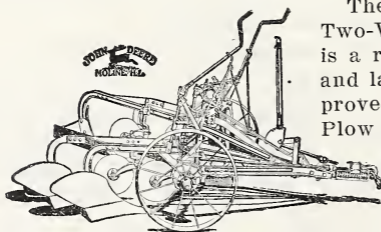


The John Deere trade mark is the best known implement trade mark in the world. It is the certificate of character that represents John Deere prestige—the good opinion of enough people based on actual field experience to make John Deere implements the world's standard for nearly a century.

Believing that one full line is better for purchaser as well as dealer, and believing that the John Deere is the one best line, we sell John Deere implements exclusively. Every implement bearing this well known trade mark is made in a John Deere Factory and the purchaser is assured of repair service during the life of that implement. You are not buying an orphan when you buy a John Deere product.

With a factory and distributing house in Syracuse the company is in position, and has a disposition to render prompt and efficient service in this territory. As a dealer desiring to constantly increase my business, I augment the company's will to serve by giving the best possible dealer helps, employing competent mechanics to set up and service any equipment I sell.

DOUBLES YOUR TWO-WAY PLOWING CAPACITY

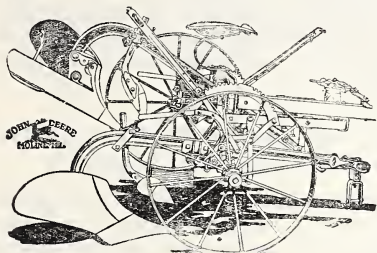


The John Deere Two-Way Tractor Gang is a real saver of time and labor. Thoroughly proved in the field. Plow always centers with the working gang. Positive power lift. With both gangs lifted,

the plow centers behind tractor like a two-wheel

cart—easy to back, turn or transport. Spring release hitch protects both plow and tractor when striking obstructions.

JOHN DEERE-SYRACUSE TWO-WAY SULKY

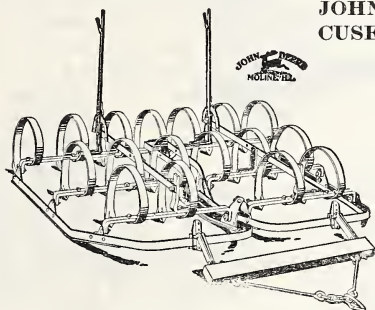


Here's the latest model of the widely-used John Deere - Syracuse Two-Way Sulky Plow. Bottoms especially adapted to soils in this section. Special

features make this the easiest plow to control you ever saw. Get on the seat and try it. Sizes 12, 14 and 16-inch.

In addition to these improved two-way plows, we have a new two-bottom plow for the new General Purpose Tractor, and the No. 5 three-bottom plow, as well as walking plows. All tractor plows use the same bottoms, made by the Syracuse Chilled Plow Company. Shares, moldboards and other wearing parts we always have in stock.

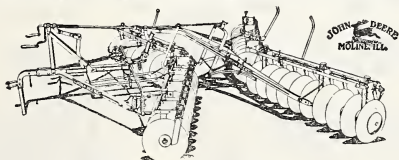
JOHN DEERE-SYRACUSE SPRING-TOOTH HARROWS



We can furnish these harrows in number of sections to suit requirements, in styles for either horses or tractor. They are all mighty dependable in de-

stroying weeds and working up good seed beds. They have important features not found on any other spring-tooth harrows. Let us show them to you.

THIS DISK HARROW WORKS ALL THE SOIL EXTRA STRONG—EASY TO ADJUST

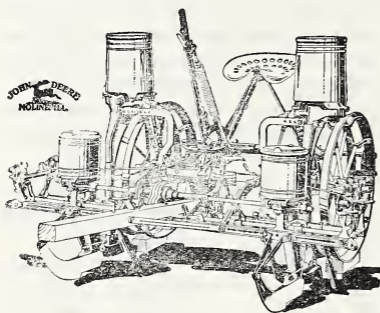


Automatic yielding lock coupling, an exclusive feature, aids rear disks in cutting out ridges left by

front disks. Gangs work independently—soil is worked full width; no binding or twisting of frame. Pivoted yoke and pressure spring controlled by crank allow light or heavy pressure on disks. Aligning device provides means of locking rear disks in position for best work. Both front and rear disks are equipped with oscillating scrapers. Heat-treated alloy steel disks.

JOHN DEERE 999 CORN PLANTER WITH SAFETY FERTILIZER ATTACHMENT

This is the most widely used planter made. Farmers like it for its extreme accuracy. Plants 2, 3 or 4 kernels per hill, as desired, without changing plates. Drilling distances varied in same manner. Nine drilling distances with each set of plates. Handles great variety of corn and other seed.



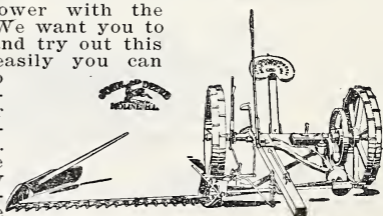
The Safety Fertilizer attachment distributes any standard fertilizer at time corn is planted, in quantities up to 700 lbs. per acre. Thrown in and out of gear automatically when planter front is raised or lowered;

can be thrown out of action without stopping team or interfering with planting. Fertilizer is deposited in wide ribbons at each hill, most of it falling on both sides of the seed and having a layer of soil between seed and fertilizer. Fertilizer does not come in direct contact with the seed.

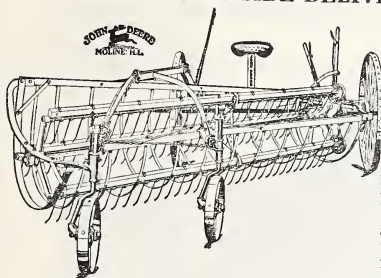
LABOR SAVING HAY MACHINERY

JOHN DEERE HIGH LIFT MOWER

The simple mower with the high, easy lift. We want you to get on the seat and try out this lift. See how easily you can raise the bar to clear any obstruction over which the double-trees will pass. A boy can operate it. High quality construction thru-out—one of the most popular machines we sell.



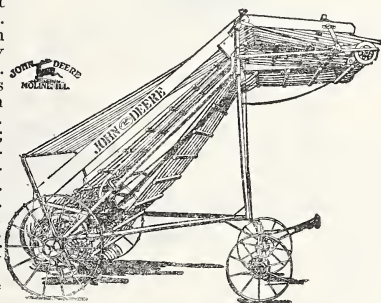
JOHN DEERE SIDE-DELIVERY RAKE



Has the widest sale of any rake of this type made. Use it in the famous John Deere way of air-curing hay. Puts hay in light, fluffy windrows with leaves inside, stems outside. Leaves cure properly—they do not bleach and shatter off—feeding value of hay is retained.

JOHN DEERE SINGLE-CYLINDER HAY LOADER

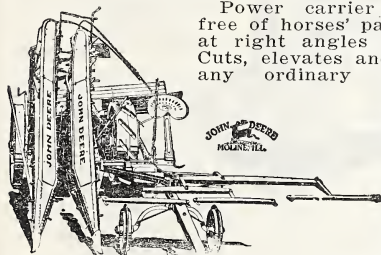
Very light draft and simply made. Single drum mounted directly on the axle. Hinged top makes loading easy in windy weather. Has forecarriage; no lifting necessary when coupling to wagon. Extra strong. Handles alfalfa and clover without knocking off valuable foliage. Capacity ample for all side-rake windrows. We also have double-cylinder type.



JOHN DEERE CORN BINDER

Power carrier delivers bundles free of horses' path and practically at right angles to standing corn. Cuts, elevates and ties better than any ordinary binder.

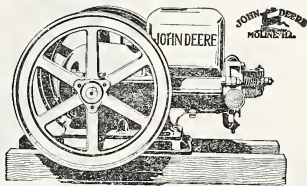
Flexible throat springs saves ears. Seventeen roller and ball bearings. Unusual strength throughout. All-steel, quick-turn truck with flexible axle. Wheels hold to uneven ground. Can be



furnished with either tall or short corn binding attachment.

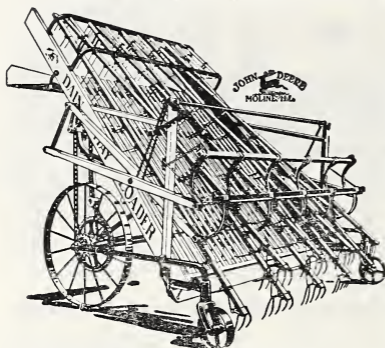
JOHN DEERE FARM ENGINE

All important working parts, fully enclosed in a dust-proof case, are oiled automatically. No sight feed oilers to watch—no grease cups to fill—oil reservoir requires attention only when fuel is exhausted. No gears exposed or extending shafts on which clothing can be caught



—a safe engine to operate. Sizes: 1½, 3 and 6 H. P.

JOHN DEERE RAKER-BAR HAY LOADER

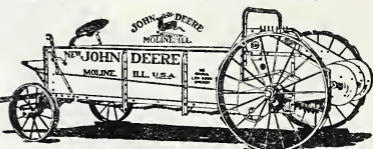


Forced delivery. One man can easily build the load. Strokes of ground rake overlap and save all the hay. Smooth, steady strokes; hay is lifted, not dragged. Large capacity, independent raker bars adjust themselves automatically to light swath or heavy windrow. Raker bars operated by hammock-mounted pitmans; no revolving shaft over

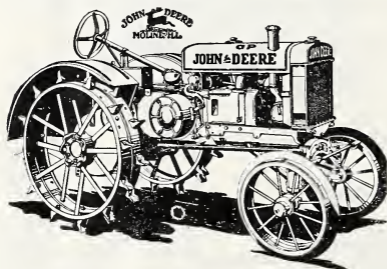
deck to wind hay. Malleable one-piece sloping shoulder ground rakes; self-cleaning. High wheels and straight chain drive, geared at proper speed for best work.

NEW JOHN DEERE MANURE SPREADER

A tight-bottom spreader with many features that put it in a jump ahead of any other make. Easier to load, easier on the horses, spreads better and lasts longer. Be sure to see this profitable machine.



JOHN DEERE GENERAL PURPOSE TRACTOR



The new tractor with all farming operations can be done with mechanical power; pulling a two-bottom plow, planting, cultivating, disking—all field work and all belt work, including jobs requiring power take-off service. Narrow, compact and low — turns

practically in its own length. Very simple—hundreds of fewer parts, insuring longer life and fewer adjustments.

JOHN DEERE MODEL D TRACTOR

Ideal for heavier farm jobs. Pulls three 14-inch bottoms in difficult conditions; four such bottoms in most conditions. Operates 28-inch separator with all attachments. Abundance of surplus power to meet emergencies. Much simpler, lighter and handier than other tractors of same size. Come in soon and let us show you how this tractor will make money for you.

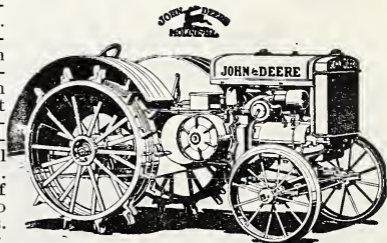
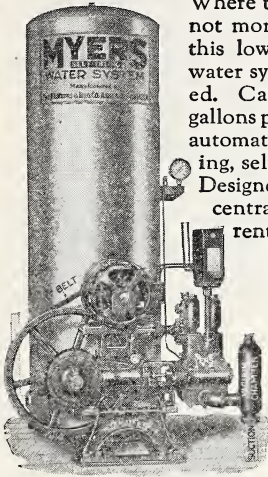


Fig. 2510 — Myers Shallow Well Water System



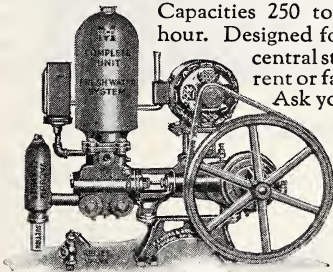
Where the well or cistern is not more than 22 feet deep this low-priced, quality-built water system is ideally adapted. Capacities 250 to 300 gallons per hour. Completely automatic control. Self-starting, self-stopping, self-oiling. Designed for operation with central station electric current or farm lighting plant. Furnishes all the comfort and convenience of running water always on tap—at very low cost for installation and operation. Thoroughly dependable.

Fig. 2544 — Myers Junior Direct Water System

For shallow wells or cisterns up to 22 feet in depth. Here is another Myers System which automatically pumps water direct from the well to the faucet—and where low price and absolute dependability are the big factors, Fig. 2544 is an outstanding value. You can buy one of these complete units, all ready to install, for considerably less than you are asked to pay for the average electric washing machine.

Capacities 250 to 300 gallons per hour. Designed for operation with central station electric current or farm lighting plant.

Ask your dealer to show you this marvelous self-oiling, entirely automatic water system of true Myers quality and value.



COST OF FARM IMPLEMENTS

A good farm implement does its work for many years at a cost of only a few cents an acre for the work done each year. It makes farming operations easier, faster, more timely; it decreases the cost of production, it increases yield per acre.

This is frequently spoken of as the implement or machinery age in farming; cutting labor costs is necessary and can be accomplished by substituting modern equipment to sufficient extent to change gradually to power farming.

BARGAIN LIST

You appreciate time and labor saving as well as convenience in being able to obtain from stock such items as sections, guards, knife heads, pitman boxes and all wearing parts of mowers, binders, knife heads, pitman boxes and all wearing parts of mowers, binders and corn harvesters. It is equally convenient if you can obtain quickly, usually from stock; binder canvass, slats, chain links, etc.

Engines, 1½ to 6 H. P., manure spreader, sulky cultivator, Dr. Terall spearator, electric and gasoline washers, milking machine, light single and double harness, heavy wagon gear.

MACHINERY REPAIRS

You will find we give careful attention to all repair orders, as we consider this an important part of our business.

We stock genuine Syracuse and John Deere plow shares, frogs, shoes, landsides and most other items you may need for plow bottom repairs, as well as many other items in repairs for plows, harrows, etc.

We believe the goods enumerated possess especial merit, and as we take advantage of every possible buying discount, are in a position to make favorable prices.

Being in a position to give expert mechanical service, means that implements will be properly set up, and that this service is available in the care and handling of Milkers, Engines, Ensilage Cutters, etc.

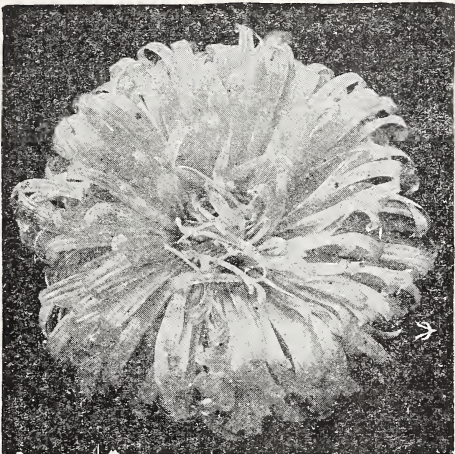
We appreciate your patronage.

SKINNER'S SEED AND SUPPLY STORE.



AMERICAN ELM

Get our prices on ornamental trees and shrubs

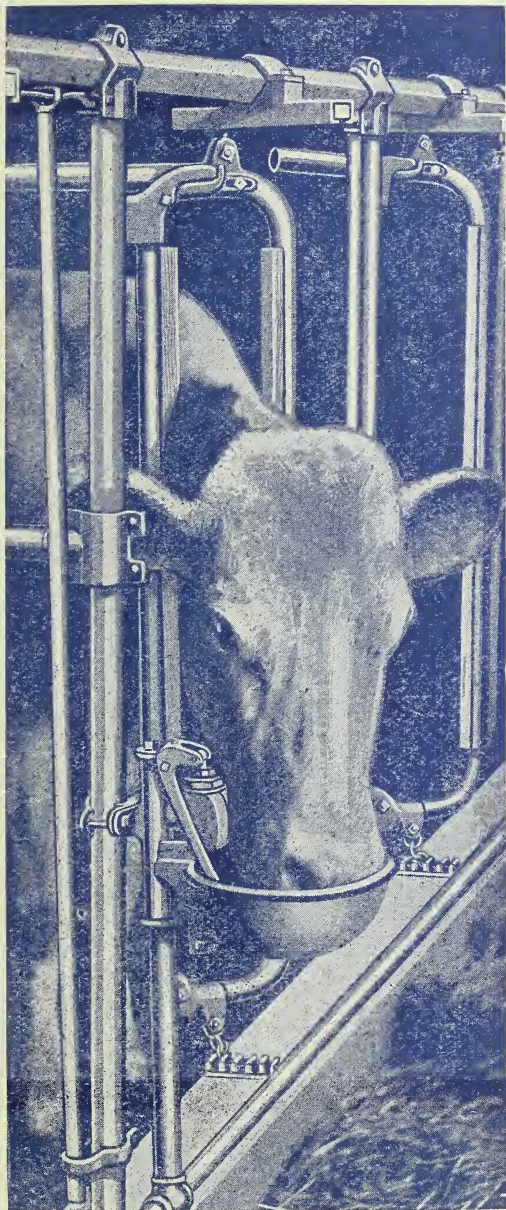


Say it with flowers, but grow your own.

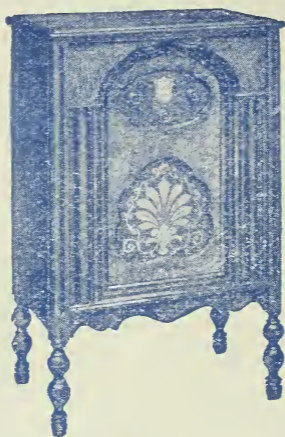
We specialize in imported aster, pansy, calendula and more common annuals. See us about ornamental lawn and garden fence

()



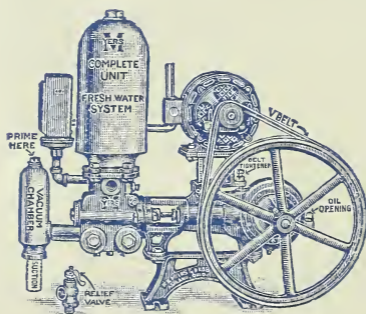


We sell the Simplex line of farm equipment which includes stanchions, stalls, pens, water bowls, etc. When repairing stables remember we have the handy concrete mixers.



ATWATER KENT and CROSLEY

screen grid
electro dynamic receivers



Myers' Automatic House Water Systems

Everything for the Farm

SKINNER'S Seed and Supply Store