

In 1905 the Pennsylvania Academy of the Fine Arts will have rounded out a century devoted to the public good, and to the encouragement and development of high artistic aims ; but it is only with the continued and disinterested support of the community which it seeks to serve that the highest usefulness can be achieved.

The Academy requires enlarged area, increased facilities, and chiefly, the continued addition to its collections, by gift, bequest, or purchase, of examples of the best masters and works of the highest class, in painting, sculpture, and decoration. It now holds a leading place among art institutions, and its Annual Exhibitions are in the foremost rank. The influence of the Schools steadily increases, and is a far-reaching one.

That these standards may be maintained, and that progress may be ensured, our appeal is made to each individual who is interested in the advancement of art and culture in the city and the nation—stockholders of the Academy, as well as others—to join with the Academy in its every-day work.

The annual contribution of Ten Dollars entitles the subscriber to Membership for the year following, and for this the Academy returns :

Member's Annual Card of Admission.

Free access to Special Exhibitions for which fees may be charged.

The use of the Reference Art Library and the Print Collection.

Free attendance on the Lectures given by the Academy.

The names of all subscribers are published each year in the Annual Report.

By the payment of One Hundred Dollars, a subscriber may become a Life-Member of the Academy.

# LINDSAY'S GALLERIES

CORNER WALNUT AND ELEVENTH STREETS

## ALWAYS ON EXHIBITION

PAINTINGS BY THE GREAT MASTERS

WATER COLORS by artists of more than local reputation

PRINTS that are not merely commercial in character

---

PHOTOGRAPHY BY APPOINTMENT

ELIAS GOLDENSKY ANNOUNCES THE  
COMPLETION OF A NEW STUDIO AT NUMBER  
TWELVE TWENTY-SEVEN WALNUT STREET.

THE WORK OF THE STUDIO WILL BE  
CHARACTERIZED BY ALL THE QUALITIES THAT  
HAVE COMBINED TO MAKE MR. GOLDENSKY'S  
PORTRAITS ACCEPTABLE IN THE PAST, AND  
BY MANY MORE, RENDERED POSSIBLE  
UNDER THE NEW ARRANGEMENTS.

APPOINTMENTS CAN BE MADE AS USUAL  
AND WILL RECEIVE HIS PERSONAL ATTEN-  
TION.

---

## W. S. BUDWORTH & SON

**Paintings**  
for Exhibitions,  
Collected and  
Sent to any Part  
of the World.



Pictures Received, Forwarded, and Returned  
to and from all New York Exhibitions.  
Paintings, Bric-a-Brac, and Furniture Re-  
moved or Packed and Shipped.

NO. 424 WEST 52D STREET  
NEW YORK CITY

We refer you to the Pennsylvania  
Academy of the Fine Arts

Long Distance Telephone Connection  
Call 120, Columbus

# McCLURE'S MAGAZINE

FOR 1903

## THE OLD MASTERS

By JOHN LA FARGE

This remarkable series of essays, the most important contributions to art literature that have ever appeared in any magazine, will be continued. New articles will treat of Hogarth, of Delacroix, Rousseau, Diaz, Millet, Corot, and other Barbizon masters, etc. The elaborate illustrations in tint are made under the direction of Mr. La Farge.

## A CENTURY OF AMERICAN PAINTING

By WILL H. LOW

The life story of our great artists from colonial times. The series will form a complete history, illustrated by the masterpieces of American Art beautifully reproduced, and many of them never before published.

## ILLUSTRATIONS

McClure's is the magazine that has given more young illustrators their first chance than any other American periodical. Forthcoming numbers will contain work by Howard Pyle, Corwin Knapp Linson, Arthur I. Keller, W. J. Glackens, C. L. Hinton, Henry Hutt, Charlotte M. Harding, Alice Barber Stephens, George Varian, Arthur Heming, Thomas J. Fogarty, W. D. Stevens, Everett L. Shinn, F. Y. Cory, E. L. Blumenschein, F. M. DuMond, Frederic Dorr Steele, Maud and Genevieve Cowles, C. L. Bull, Jules Guerin, Ch. Weber, J. N. Marchand, A. B. Frost, Oliver Herford, Albert Sterner, Howard Chandler Christy, W. Hatherell, Frank Brangwyn, Garth Jones, Frank Craig, Raven Hill, H. Lanos, André Castaigne.

*Subscriptions, One Dollar a Year*

S. S. McCLURE CO., 141 East 25th St., New York

# *The Plastic Club*

10 South Eighteenth Street

January 21st.—4 P.M.

**A Talk on Green Growing Things in Homes and Cities,**

By MISS ZELLA MILHAN, of New York.

January 28th.—4.30 P.M.

**Class in Current Art Events,**

Conducted by MISS MARY BUTLER.

February 4th.—4.30 P.M.

**Regular Business Meeting.**

February 11th.—4.30 P.M.

**Talk on Rome,**

Conducted by MRS. S. P. S. MITCHELL.

February 18th.—4.30 P.M.

**Talk on Japanese Method of Color Printing,**

By MISS MAY HAYDOCK.

February 25th.—4.30 P.M.

**Class in Current Art Events,**

Conducted by MISS A. M. ARCHAMBAULT.

**Sketch Class (Costumed Model),**

Tuesday and Friday Mornings, 9.30 to 12.30.

## OFFICERS

President

MRS. SARA P. SNOWDEN MITCHELL

Vice-Presidents

MRS. ALICE BARBER STEPHENS (abroad)

MISS BLANCHE DILLAYE

MISS EMILY SARTAIN

Recording Secretary

Treasurer

MISS MATHILDE WEIL

MISS MARY H. SINICKSON

**Black and White Exhibition, February 28 to March 7**

Paul B. Himmelsbach

THE PENNSYLVANIA  
ACADEMY OF THE FINE ARTS  
FOUNDED 1805



CATALOGUE OF THE  
SEVENTY-SECOND ANNUAL  
EXHIBITION, JANUARY  
19 TO FEBRUARY 28, 1903

SECOND EDITION

PHILADELPHIA  
MDCCCIII

MANAGEMENT OF THE PENNSYLVANIA  
ACADEMY OF THE FINE ARTS.

PRESIDENT,

EDWARD H. COATES.

VICE-PRESIDENT,

CLARENCE H. CLARK.

DIRECTORS,

CLARENCE H. CLARK,  
E. BURGESS WARREN,  
JOHN H. PACKARD, M.D.,  
HENRY WHELEN, JR.,  
JOHN H. CONVERSE,  
THEOPHILUS P. CHANDLER, JR.,

CHARLES C. HARRISON,  
HERBERT M. HOWE, M.D.,  
WILLIAM L. ELKINS,  
GEORGE H. MCFADDEN,  
CLEMENT B. NEWBOLD,  
EDWARD T. STOTESBURY,

WILLIAM Z. ZEIGLER.

TREASURER,

HENRY WHELEN, JR.

SECRETARY AND MANAGING DIRECTOR,

HARRISON S. MORRIS.

SOLICITOR,

JOHN G. JOHNSON.

COMMITTEE ON EXHIBITIONS,

E. BURGESS WARREN, CHAIRMAN,  
JOHN H. PACKARD, M.D.,

GEORGE H. MCFADDEN

CLEMENT B. NEWBOLD.

JURY OF SELECTION AND HANGING COMMITTEE  
FOR 1903



Painting.

J. MCLURE HAMILTON, CHAIRMAN,

THOMAS EAKINS,

W. SERGEANT KENDALL,

THOMAS P. ANSHUTZ,

CHILDE HASSAM,

COLIN C. COOPER,

LOUIS PAUL DESSAR,

ROBERT HENRI,

FRANK W. BENSON,

J. ALDEN WEIR,

WILTON LOCKWOOD,

PHILIP L. HALE.

Sculpture.

CHARLES GRAFLY,

F. EDWIN ELWELL,

CYRUS E. DALLIN.

Hanging Committee.

J. MCLURE HAMILTON,

J. ALDEN WEIR,

COLIN C. COOPER.

The selection of Pictures by American artists in Europe is in the hands of the following Jury:

ALEXANDER HARRISON,

S. SEYMOUR THOMAS,

WALTER GAY.

AWARDS OFFERED TO EXHIBITORS BY  
THE ACADEMY OF THE FINE ARTS

TEMPLE FUND  
AND MEDAL.

The Temple Trust Fund, created by the late Joseph E. Temple, yields an annual income of Eighteen Hundred Dollars for the purchase of works of American art at the discretion of the Directors of the Academy and for the issue of a gold medal by the Painters' Jury of Selection. The competition is open to all American Artists.

WALTER  
LIPPINCOTT  
PRIZE.

The Walter Lippincott Prize of Three Hundred Dollars, with an option on the part of the founder to purchase the painting chosen, will be awarded for the tenth time. The conditions governing the award for this exhibition are : that the picture selected shall be, all its qualities considered, the best figure painting in oil by an American citizen, and that Mr. Lippincott shall have the option, for one week after the announcement of the award, of purchasing the chosen painting at the price named by the Artist in the memorandum of entry.

MARY SMITH  
PRIZE.

The Mary Smith Prize of One Hundred Dollars, founded by the late Russell Smith, will this year be awarded by the Exhibition Committee for the twenty-fifth time. According to the modified terms, the prize will be awarded : to the Painter of the best painting (not excluding portraits) in oil or water



colors exhibited at the Academy, painted by a resident woman Artist, for qualities ranking as follows: 1st, Originality of Subject; 2d, Beauty of Design or Drawing; 3d, Color and Effect; and, lastly, Execution. The Academy will have no claim on the painting. The same Artist may not receive the prize twice in succession, nor more than twice in all.

GOLD MEDAL  
OF THE  
ACADEMY.

The Gold Medal of the Pennsylvania Academy of the Fine Arts, founded in 1893 by John H. Converse, Esq., will be at the disposal of the Academy. It will be awarded, at the discretion of the Board of Directors, in recognition of high achievement in their profession, to American Painters and Sculptors who may be exhibitors at the Academy or represented in the permanent collection, or who, for eminent services in the cause of art or to the Academy, have merited the distinction.

JENNIE SESNAN  
GOLD MEDAL.

The Jennie Sesnan Prize, a Gold Medal endowed by Miss Elizabeth W. Roberts, will this year be available for the first time. The medal will be awarded by a Jury of Artists for the best landscape in the Exhibition, but the Jury of Award may withhold the prize if in its judgment no work should merit it.



## HONORS AWARDED BY THE TEMPLE FUND



From 1884 until 1890 the Temple Gold Medal was awarded by the Directors of the Academy to the best figure picture; and the Temple Silver Medal to the best landscape and marine. In 1891 and 1892 the medals were awarded by the Jury of Selection and Hanging Committee of Artists to the best and second-best pictures, irrespective of subject. From 1893 to 1899 two Gold Medals were awarded annually. For the years 1900 to 1902 one Gold Medal was awarded, and for the present year there will be one Gold Medal.

TEMPLE GOLD  
MEDAL.

- 1884. George W. Maynard.
- 1885. Charles Sprague Pearce.
- 1887. Clifford Provost Grayson.
- 1888. Charles Stanley Reinhart.
- 1889. Anna Elizabeth Klumpke.
- 1890. William Henry Howe.
- 1891. Abbott H. Thayer.
- 1892. Henry S. Bisbing.
- 1893. No Exhibition.
- 1894. J. McNeill Whistler.
- 1894. John S. Sargent.
- 1895. Edmund C. Tarbell.
- 1895. John H. Twachtman.
- 1896. Gari Melchers.
- 1896. J. Humphreys Johnston.
- 1897. George De Forest Brush.
- 1897. John W. Alexander.
- 1898. Wilton Lockwood.
- 1898. Edward F. Rook.
- 1899. Joseph De Camp.
- 1899. Childe Hassam.
- 1900. Cecilia Beaux.
- 1901. William M. Chase.
- 1902. Winslow Homer.

TEMPLE SILVER MEDAL.	1883.	William Thomas Trego.
	1884.	Thomas Hill.
	1885.	William T. Richards.
	1887.	Alexander Harrison.
	1888.	Howard Russell Butler.
	1889.	Arthur Parton.
	1890.	Edward L. Simmons.
	1891.	Kenyon Cox.
	1892.	George Inness.

#### AWARDS OF THE WALTER LIPPINCOTT PRIZE



Founded in 1894 by Walter Lippincott, Esq.

1894.	William Sergeant Kendall.
1895.	Edmund C. Tarbell.
1896.	William L. Picknell.
1897.	Albert Herter.
1898.	James Jebusa Shannon.
1899.	John W. Alexander.
1900.	Henry O. Tanner.
1901.	Charles H. Davis.
1902.	Walter MacEwen.

#### AWARDS OF THE ACADEMY GOLD MEDAL OF HONOR



Founded in 1893 by John H. Converse, Esq., of the Board of Directors of the Academy.

1893.	D. Ridgway Knight.
1894.	Alexander Harrison.
1895.	William M. Chase.
1896.	Winslow Homer.
1898.	Edwin A. Abbey.
1898.	Cecilia Beaux.
1899.	Charles Grafly.
1901.	Henry Thouron.
1902.	J. McNeill Whistler.

AWARD OF THE WILLIAM  
L. ELKINS PRIZE OF \$5000

Contributed for the Sixty-Fifth Annual Exhibition by William  
L. Elkins, Esq.

1896. Abbott H. Thayer, \$3000.

1896. Edmund C. Tarbell, \$2000.

AWARDS OF THE  
MARY SMITH PRIZE

Founded in 1879 by the late Russell Smith, in memory of his  
daughter, Mary Smith.

1879. Susan H. MacDowell.

1880. Catharine A. Janvier.

1881. Emily Sartain.

1882. Mary K. Trotter.

1883. Emily Sartain.

1884. Lucy D. Holme.

1885. Cecilia Beaux.

1886. No Exhibition.

1887. Cecilia Beaux.

1888. Elizabeth F. Bonsall.

1889. Elizabeth W. Roberts.

1890. Alice Barber Stephens.

1891. Cecilia Beaux.

1892. Cecilia Beaux.

1893. No Exhibition.

1894. Maria L. Kirk.

1895. Gabrielle D. Clements.

1896. Elizabeth H. Watson.

1897. Elizabeth F. Bonsall.

1898. Caroline Peart.

1899. Carol H. Beck.

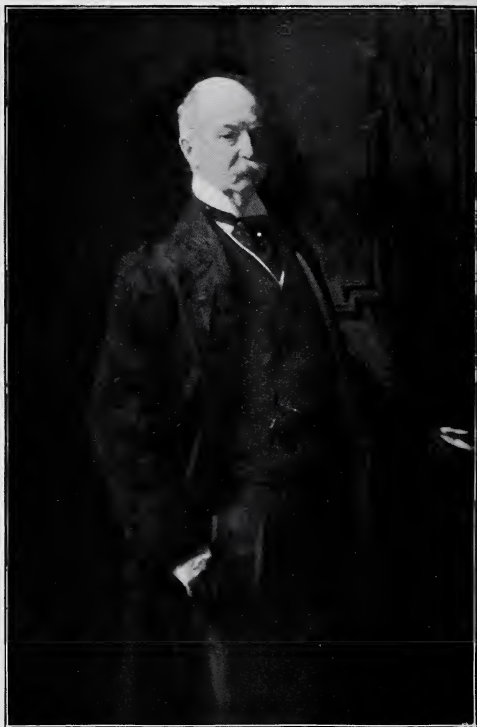
1900. Mary F. R. Clay.

1901. Janet Wheeler.

1902. Elinor Earle.



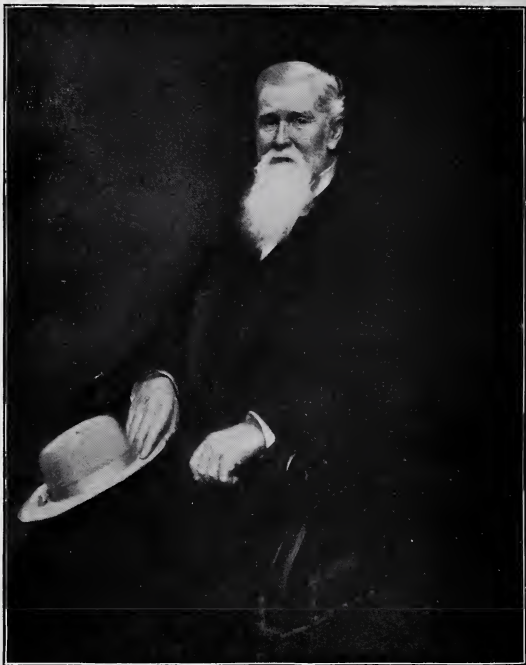
THE LITTLE LADY SOPHIE OF SOHO. BY JAMES A. MCNEILL WHISTLER



PORTRAIT OF P. A. B. WIDENER. BY JOHN SINGER SARGENT

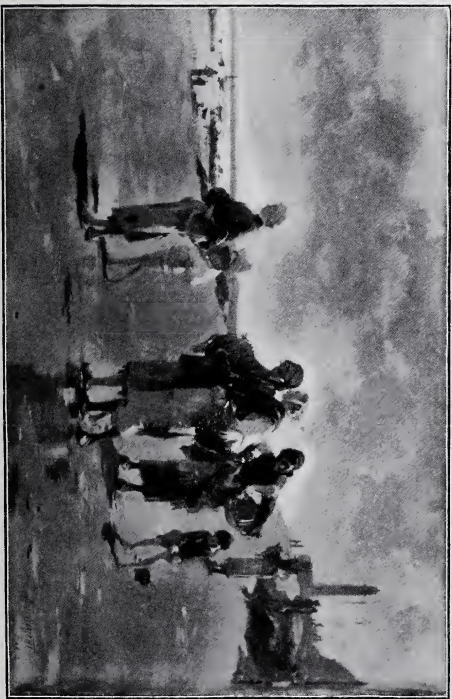


CHILDREN ON DONKEY-BACK. BY J. ALDEN WEIR



PORTRAIT OF JAY COOKE. BY WILLIAM M. CHASE



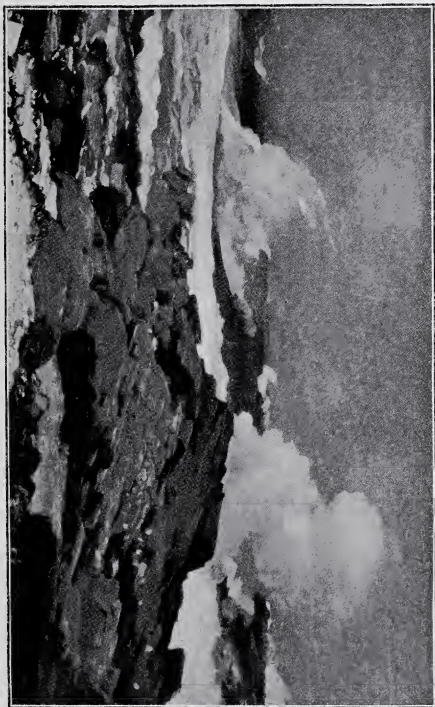


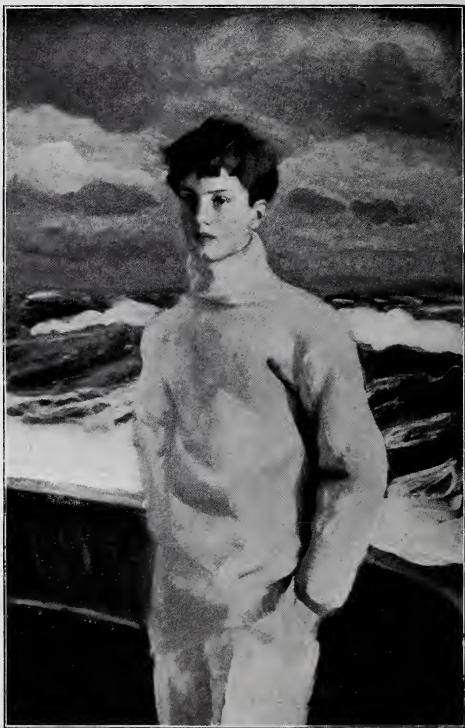
THE OYSTER-GATHERERS. BY JOHN SINGER SARGENT



GIRL AND DOG. BY EDMUND C. TARBELL

EASTERN POINT, BY WINSLOW HOMER

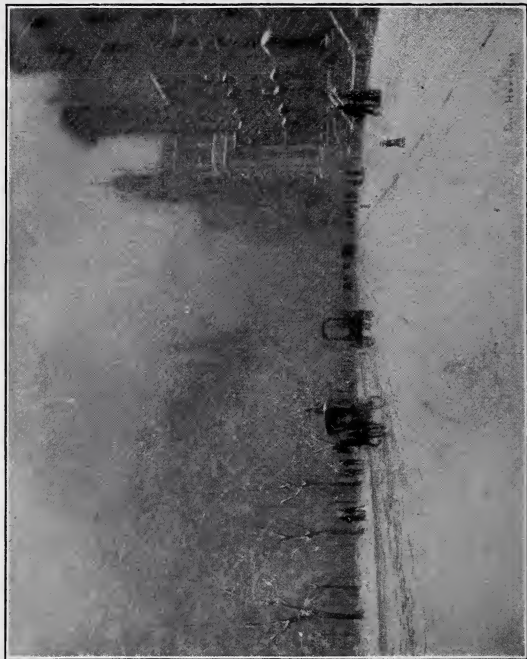




MASTER M. WILLIAM WRIGHT. BY PIERRE TROUBETZKOY



PORTRAIT. BY CECILIA BEAUX



2  
C  
D  
E  
F  
G  
H  
I  
J  
K  
L  
M  
N  
O  
P  
Q  
R  
S  
T  
U  
V  
W  
X  
Y  
Z



SUMMER DAYS. BY CHARLES HOPKINSON



A SEA BREEZE. BY CAROLINE PEART





SUNLIGHT. BY FRANK W. BENSON



A ROSE. BY JOHN W. ALEXANDER



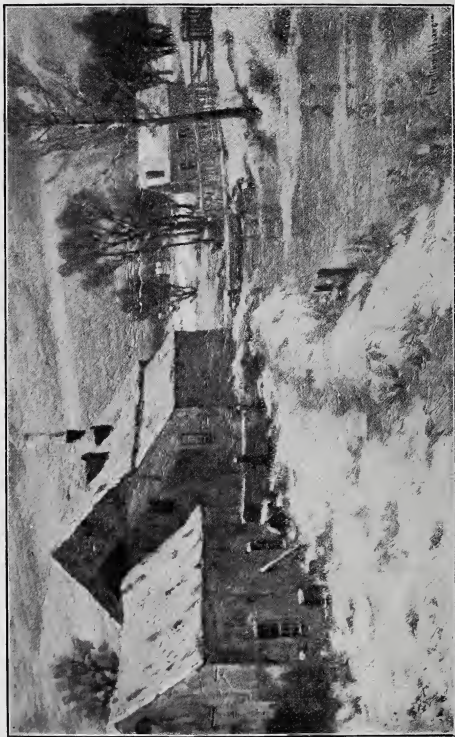
A SECRET. BY WALTER MACEWEN



WELLS CATHEDRAL: THE CHAIN GATE. BY COLIN C. COOPER



YOUNG WOMAN WITH WATER-LILIES. BY CHARLES C. CURRAN



THE FROZEN MILL-RACE. BY CHARLES MORRIS YOUNG



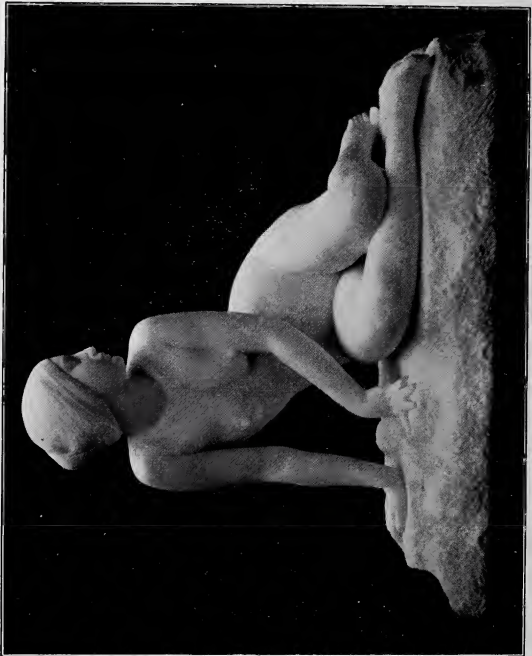
A LITTLE STORY. BY MARY SHEPARD GREENE







LA VANNE DE MONTIGNY. BY ALBERT D. GIHON





IN MUCH WISDOM. BY CHARLES GRAFLY



CATALOGUE OF  
PAINTINGS IN OIL

GALLERY F.



JAMES A. MCNEILL WHISTLER

- 1 Rose and Brown—*La Cigale*.  
Lent by Charles L. Freer, Esq.
- 2 Rose and Red—*The Little Pink Cap*.  
Lent by Charles L. Freer, Esq.
- 3 Rose and Gold—*The Little Lady Sophie of Soho*.  
Lent by Charles L. Freer, Esq.
- 4 Blue and Gold—*The Rose Azalea*.  
Lent by Charles L. Freer, Esq.
- 5 Green and Gold—*The Great Sea*.  
Lent by Charles L. Freer, Esq.
- 6 *Cremorne Gardens*.  
Lent by E. G. Kennedy, Esq.

GEDNEY BUNCE.

- 7 *Butterfly and Sail: San Giorgio*.
- 8 *Evening: Grand Canal*.
- 9 *The Coming Night*.

JOHN SINGER SARGENT.

- 10 *The Oyster-Gatherers*.  
Lent by Miss Susan Travers.

*PAINTINGS IN OIL.*

---

ABBOTT H. THAYER.

11 *Portrait.*

Lent by H. S. Holden, Esq.

WILTON LOCKWOOD.

12 *Portrait of a Child.*

Lent by Alexander J. Cassatt, Esq.

EDWARD A. RORKE.

13 *Casco Bay.*

WILLIAM M. CHASE.

14 *Portrait of Jay Cooke.*

Lent by J. Horace Harding, Esq.

ETHELBERT W. BROWN.

15 *October: The Sky Aflame.*

WILLIAM M. CHASE.

16 *The Infanta.*

Lent by Mrs. Henry Kirke Porter.

MATHIAS ALTEN.

17 *Husking Corn.*

EDWIN A. ABBEY.

18 *Sylvia.*

Lent by Hon. William A. Clark.

FREDERICK BALLARD WILLIAMS.

19 *Environs of Paterson.*

*PAINTINGS IN OIL.*

---

WALTER GAY.

20 Interior, Palace of Fontainebleau.

21 Chez Helleu.

CECILIA BEAUX.

22 Mrs. Theodore Roosevelt.

Lent by Mrs. Theodore Roosevelt.

ARTHUR B. DAVIES.

23 Newfoundland.

WALTER GAY.

24 La Console.

25 Newington House, Oxfordshire.

JOHN SINGER SARGENT.

26 Portrait of P. A. B. Widener.

Lent by P. A. B. Widener, Esq.

ABBOTT H. THAYER.

27 Portrait.

JOHN SINGER SARGENT.

28 Portrait of William M. Chase.

Lent by pupils of Mr. Chase.

CECILIA BEAUX.

29 Portrait of Mrs. Barton.

Lent by F. O. Barton, Esq.

EDMUND C. TARBELL.

30 Girl and Dog.

*PAINTINGS IN OIL.*

---

CHARLES H. FROMUTH.

31 Dock Decoration: Evening.

Lent by E. L. Florance.

WALTER GAY.

32 Coin du feu.

J. ALDEN WEIR.

33 Children on Donkey-Back.

HUGH H. BRECKENRIDGE.

34 The Golden Valley.

CHARLES H. FROMUTH.

35 Dock Decoration: Movement.

E. E. RICHARDS.

36 Dutch Interior.

MARY CASSATT.

37 La femme au chien.

FRANCES C. HOUSTON.

38 The Mirror.

HARRY VAN DER WEYDEN.

39 The Promenade.

JANET WHEELER.

40 "Beg For It."

JOHN SINGER SARGENT.

41 Portrait of John Ridgely Carter.

Lent by J. R. Carter, Esq.



*PAINTINGS IN OIL.*

---

CHARLES HOPKINSON.

42 Summer Days.

CHARLES AUSTIN NEEDHAM.

43 Drifting Lights and Shadows.

CAROLINE PEART.

44 A Sea Breeze.

HORATIO WALKER.

45 Peasants Scraping a Pig.

GEORGE W. SOTTER.

46 Clouds and Sunshine.

JOHN LAMBERT.

47 Portrait.

Lent by Arthur E. Newbold, Esq.

W. COLE BRIGHAM.

48 A Snow Squall.

WINSLOW HOMER.

49 Eastern Point.

HENRY B. SNELL.

50 Winter on the North River.

JOHN W. ALEXANDER.

51 Study in Green.

JAMES WILSON MORRICE.

52 Paramé la plage.

*PAINTINGS IN OIL.*

---

JOHN W. ALEXANDER.

53 Portrait.

HENRY SINGLEWOOD BISBING.

54 The Plain: Evening.

JOHN W. ALEXANDER.

55 A Quiet Hour.

GEORGE C. AID.

56 Une Idylle.

EDWARD W. REDFIELD.

57 Winter Evening.

WALTER L. GREENE.

58 After the Storm.

JULIAN STORY.

59 Portrait.

Lent by Mrs. Brinton Coxe.

HENRY SINGLEWOOD BISBING.

60 The Heather-stretches of Holland.

MAY WILSON WATKINS.

61 The Luxembourg Gardens.

LILIAN WESTCOTT HALE.

62 Niagara: Morning.

CHILDE HASSAM.

63 Washington Bridge.

*PAINTINGS IN OIL.*

---

MARY BREWSTER HAZELTON.

64 Pergola at Dublin.

CHILDE HASSAM.

65 Moonrise at Sunset.

PHILIP L. HALE.

66 Morning Joy.

CHILDE HASSAM.

67 Scarlet Tanager.

LILIAN WESTCOTT HALE.

68 Niagara : Afternoon.

PHILIP L. HALE.

69 Down the River.

JOHN H. NIEMEYER.

70 Upland Pasture.

FLORENCE ESTÉ.

71 In Oldest Brittany.

72 The Morning Hour : Brittany Village.

73 The Tidal River.

IRVING R. WILES.

74 Miss Julia Marlowe.

Lent by Miss Marlowe.

*PAINTINGS IN OIL.*

---

FLORENCE ESTÉ.

75 Pasture-Land.

76 The Path.

Lent by Charles Raymond, Esq.

77 The Sleeping Village.

Lent by Charles Raymond, Esq.

CHILDE HASSAM.

78 Oyster Sloop.

LEONARD OCHTMAN.

79 The Brook.

ALEXANDER BOWER.

80 Landscape.

EDMUND C. TARBELL.

81 Portrait.

FRANK B. MASTERS.

82 Gunquit: October Afternoon.

MARIA OAKLEY DEWING.

83 Carnations.

ERNEST LAWSON.

84 High Bridge: Winter.

EDWARD H. BARNARD.

85 The River.

*PAINTINGS IN OIL.*

---

COLIN CAMPBELL COOPER.  
86 Lincoln Cathedral, Interior.

MARY SMYTH PERKINS.  
87 Portrait of the Painter.

ROBERT HENRI.  
88 Portrait.

HOWARD GARDINER CUSHING.  
89 Portrait.  
Lent by H. P. Whitney, Esq.

CHARLES A. LASAR.  
90 In the Forest of Rambouillet, France.

ELIZABETH WENTWORTH ROBERTS.  
91 The Black Shawl.  
92 Emerson's Study.  
93 The Church Door.

THOMAS EAKINS.  
94 Cardinal Sebastiano Martinelli, Apostolic  
Delegate to the United States.  
Lent by the Catholic University of America.

ELIZABETH WENTWORTH ROBERTS.  
95 Pinksta.  
96 The Edge of the Shadow.

*PAINTINGS IN OIL.*

---

JAMES HAGAMAN.

97 The Seine at St. Cloud: Evening.

ELIZABETH WENTWORTH ROBERTS.

98 Emerson's Desk in the Old Manse.

HARRY VAN DER WEYDEN.

99 Moonlight.

ELIZABETH CURTIS.

100 October: Connecticut.

FRANK W. BENSON.

101 Head of a Woman.

102 Sunlight.

H. H. GALLISON.

103 Morning Mists.

FRANK W. BENSON.

104 Child with a Sea-Shell.

GARI MELCHERS.

105 Portrait of a Baby.

DWIGHT BLANEY.

106 After the Thunder Storm.

W. ELMER SCHOFIELD.

107 Breezy Day: Early Autumn.

EDWARD DUFNER.

108 A September Afternoon.

*PAINTINGS IN OIL.*

---

CECILIA BEAUX.

109 Portrait.

Lent by Ira Davenport, Esq.

CHARLES MELVILLE DEWEY.

110 In Shropshire.

CHARLES WARREN EATON.

111 An Old Flemish Town.

## GALLERY G.



JOSEPH R. DE CAMP.

121 The New Gown.

EUGENIE F. GLAMAN.

122 In the Stanchions.

ARTHUR CLIFTON GOODWIN.

123 The Nurse-Maid's Charges.

ELIZABETH H. THOMAS.

124 The Green Scarf.

ELIZA MIDDLETON COXE.

125 May Afternoon.

E. A. BURBANK.

126 The Old Breastpin.

ELENORE PLAISTED ABBOTT.

127 Study.

MARY SHEPARD GREENE.

128 A Little Story.

WILLIAM S. HORTON.

129 The Supper Hour.

EDWARD W. REDFIELD.

130 The Red Barn.



*PAINTINGS IN OIL.*

---

LUCIEN ABRAMS.

131 Profil de Femme.

CARL BUERGERNISS.

132 Portrait

JOHN SLOAN.

133 Woman Sewing.

H. T. CARISS.

134 A Débutante.

GEORGE INNESS, JR.

135 Landscape.

FRANK DE HAVEN.

136 The Storm.

Lent by Peter A. Schemm, Esq.

LOUIS PAUL DESSAR.

137 Autumn.

ALBERT L. GROLL.

138 A Bit of Sandy Hook.

GEORGE INNESS, JR.

139 Leading his Flock.

ROSWELL S. HILL.

140 The Town through the Trees.

LOUIS PAUL DESSAR.

141 Moonlight.

*PAINTINGS IN OIL.*

---

FREDERICK BALLARD WILLIAMS.

142 Maidenhood.

I. H. CALIGA.

143 The Toilet.

J. C. MAGEE.

144 Low Tide.

CLARA T. MACCHESNEY.

145 The Reading.

ETHEL SANDS.

146 Interior.

EDWARD SIMMONS.

147 Tired Out.

LILLA CABOT PERRY.

148 Japanese Lace-Maker.

Lent by Quincy A. Shaw, Esq.

COLIN CAMPBELL COOPER.

149 Wells Cathedral: The Chain Gate.

ELIZABETH NOURSE.

150 Le Frère et la soeur, Penmarch.

ALICE MUMFORD.

151 The Lacquer Box.

ANNA LEA MERRITT.

152 Portrait.

Lent by J. E. McClees, Esq.

*PAINTINGS IN OIL.*

---

FRANK A. BARNEY.

153 November.

JOSEPH R. DE CAMP.

154 Portrait.

REYNOLDS BEAL.

155 Marine.

WINSLOW HOMER.

156 The Unruly Calf.

GIFFORD BEAL.

157 Returning Home.

JOHN GORDON SAXTON.

158 Long Island Pasture.

LOUISE WOOD.

159 Solemn Reflections.

A. MOLARSKY.

160 The Student.

SUSAN WATKINS.

161 The Necklace.

F. F. ENGLISH.

162 Winter Silence.

L. M. GENTH.

163 Twilight Hour.

ELSA KOENIG.

164 The Gold Locket.

*PAINTINGS IN OIL.*

---

ANNA HOPE HUDSON.

165 Portrait of a Child.

WALTER CLARK.

166 Autumn on the Hill-sides.

LYELL CARR.

167 Old Virginia.

WILLIAM M. CHASE.

168 Still Life.

I. H. CALIGA.

169 Autumn

H. W. RANGER.

170 The Hill Back of the School-house.

E. IRVING COUSE.

171 Under the Cottonwoods.

THOMAS P. ANSHUTZ.

172 The Evening Hour.

ALICE ARCHER SEWALL JAMES.

173 Eros.

HENRY B. PANCOAST, JR.

174 Gray Day, Gloucester.

JANET WHEELER.

175 Master Francis T. Chambers, Jr.  
Lent by Mrs. Francis T. Chambers.

*PAINTINGS IN OIL.*

---

WALTER NETTLETON.

176 The Peaceful Hour.

L. M. GENTH.

177 The Ponte Vecchio, Florence.

LAURA CRAVEN.

178 Widow Cornish's Farm.

HENRY B. PANCOAST, JR.

179 Bemo Ledge, Gloucester.

WILL S. ROBINSON.

180 The Pond.

ADELE M. VON HELMOLD.

181 David.

P. A. J. DAGNAN-BOUVERET.

182 Madonna of the Rose.

Lent by Thomas Shields Clarke, Esq.

ELLEN DAY HALE.

183 Girl Reading.

## GALLERY H.



HUGH H. BRECKENRIDGE.

201 Autumn.

CHARLES HOPKINSON.

202 Hills and Woods.

WILLIAM M. CHASE.

203 Portrait.

Lent by Mrs. George H. Earle, Jr.

HERBERT W. FAULKNER.

204 Sunrise in Venice.

W. ELMER SCHOFIELD.

205 An October Hillside.

F. S. CHURCH.

206 A Summer Song.

COLIN CAMPBELL COOPER.

207 Ely Cathedral: West Front.

A. C. FAULEY.

208 Fishing-Schooner, Gloucester.

BIRGE HARRISON.

209 Madison Avenue in Winter.

ELIZABETH NOURSE.

210 Dans l'ombre à Penmarch.

*PAINTINGS IN OIL.*

---

JOHN LAMBERT.

211 Portrait.

Lent by Clement B. Newbold, Esq.

BIRGE HARRISON.

212 Afterglow.

LESLIE P. THOMPSON.

213 Sand Dunes.

CAROLINE PEART.

214 Grace.

SARAH S. STILLWELL.

215 Goldfish.

W. ELMER SCHOFIELD.

216 An Autumn Day.

EMMASITA REGISTER.

217 Landscape.

PAULA B. HIMMELSBACH.

218 Portrait.

JULIAN STORY.

219 Portrait.

Lent by Mrs. Brinton Coxe.

ALBERT DAKIN GIHON.

220 Doux Soleil d'Automne.

F. R. DVORAK.

221 The Sniffers.

Lent by A. J. Antelo, Esq.

*PAINTINGS IN OIL.*

---

JOHN LAMBERT.

222 Portrait of Nancy.

Lent by Mrs. Walter Cope.

ADAM EMORY ALBRIGHT.

223 The Wheelbarrow.

EDMUND C. TARBELL.

224 People at Breakfast.

L. H. MEAKIN.

225 Near Camden, Maine.

JOHN G. SAXTON.

226 A Misty Morning.

CHARLES H. DAVIS.

227 April by the Sea.

228 The Great Oak.

ANNA LEA MERRITT.

229 Youth and Fame.

JULIAN STORY.

230 Little Bertie.

Lent by J. Bertram Lippincott, Esq.

CHARLES MORRIS YOUNG.

231 Frosty Morning in November.

WILLIAM M. PAXTON.

232 Portrait.



*PAINTINGS IN OIL.*

---

HENRI FABIEN.

233 Serenity.

CHARLES MORRIS YOUNG.

234 March Afternoon.

LUCY S. CONANT.

235 Guingamp Towers.

JOHN F. EARHART.

236 Fog in the Valley.

Lent by Charles J. Krebbiel, Esq.

CHARLES MORRIS YOUNG.

237 The Frozen Mill-Race.

238 Evening After a Thaw.

CHARLES C. CURRAN.

239 The Dawn of Spring.

FRANK A. BICKNELL.

240 Banks of the River Loing.

LESLIE P. THOMPSON.

241 Ogunquit.

LILLIAN R. REED.

242 After the Storm.

W. DEAN HAMILTON.

243 Portrait.

Lent by Travis Cochran, Esq.

*PAINTINGS IN OIL.*

---

FREDERIC BARTLETT.

244 After the Storm.

WALTER MACEWEN.

245 A Secret.

CHARLES HOPKINSON.

246 Fishermen of Finistère.

DWIGHT W. TRYON.

247 Sunlight after Showers.

Lent by Frank H. Goodyear, Esq.

HENRY SINGLEWOOD BISBING.

248 The Plain : October Afternoon.

WALTER NETTLETON.

249 Hoarfrost and Snow.

MARY E. DICKSON.

250 Girl with Flowers.

HARRY KNOX SMITH.

251 End of Day.

ERNEST LAWSON.

252 Winter.

253 Winter Morning.

Lent by William M. Chase, Esq.

254 The Boat-House : Early Morning.

255 Evening Sunlight : Moret, France.

Lent by Ernest L. Oppenheim, Esq.

## NORTH CORRIDOR.



JOHN J. REDMOND.

301 The Last Glow: Midwinter in Switzerland.

J. C. MAGEE.

302 A Country Road.

RALPH A. BLAKELOCK.

303 Still Night.

Lent by Catholina Lambert, Esq.

FREDERICK A. BRIDGMAN.

304 Last Rays over Algiers.

HENRY O. TANNER.

305 Mary.

ALEXANDER HARRISON.

306 Still Waters.

ELIZABETH F. KRUSMAN VAN ELTEN.

307 Portraits.

ALEXANDER HARRISON.

308 Flying Clouds.

MAX WEYL.

309 On Piney Branch.

JOHN W. ALEXANDER.

310 A Rose.

*PAINTINGS IN OIL.*

---

MAY A. POST.

311 Portrait.

Lent by Miss C. M. Post.

JOHN W. ALEXANDER.

312 Portrait.

Lent by Thomas Hastings, Esq.

LETTA CRAPO SMITH.

313 A Daughter of Egmond.

ALEXANDER HARRISON.

314 Iris Lunaire.

MARGARET FULLER.

315 The Silver-Cleaners.

JOHN W. ALEXANDER.

316 Portrait.

Lent by Mrs. W. C. Denny.

ALFRED E. SMITH.

317 Mr. Emerson.

Lent by C. Chase Emerson, Esq.

JOHN W. ALEXANDER.

318 Study in Tone.

WILLIAM T. SMEDLEY.

319 A Boy in Green.

ALEXANDER HARRISON.

320 Moonrise: Marine.

*PAINTINGS IN OIL.*

---

ALBERT DAKIN GIHON.

321 La Vanne de Montigny.

ALEXANDER HARRISON.

322 Montigny Terrace.

PAULINE MCKAY.

323 Woman in Blue.

EDWARD H. POTTHAST.

324 The Waning Day.

HENRY O. TANNER.

325 Hagar.

CARL NEWMAN.

326 Portrait.

CHARLES H. DAVIS.

327 Summer Moonlight.

PHILIP L. HALE.

328 Light and Shade.

## GALLERY I.



CARLETON WIGGINS.

401 On the Hills.

ELIZA MIDDLETON COXE.

402 Hill Country.

THOMAS J. EAGAN.

403 Winter in Rhode Island.

LETTA CRAPO SMITH.

404 Chrysanthemums.

E. TAYLOR SNOW.

405 Near Englewood.

LEONARD OCHTMAN.

406 The Solitary Road.

MYRON BARLOW.

407 Gossips.

ELIZABETH V. TAYLOR.

408 Portrait of Margaret Atwood.

BEN FOSTER.

409 A Hill: Early Twilight.

JONAS LIE.

410 A Winter Idyll.

*PAINTINGS IN OIL.*

---

WILLIAM H. PAUL, JR.

411 The Cuttalossa.

KATHARINE M. SCHMIDT.

412 A Shepherdess's Return.

LAURA E. SNOW.

413 Evening: Stone Harbor.

EDWARD W. REDFIELD.

414 Before Sundown.

HERMAN DUDLEY MURPHY.

415 The Thames.

KATE A. CARL.

416 Study.

CAROLINE PEART.

417 Portrait.

AIMÉ MEYVIS.

418 Before Rain at Trekvaart.

MARGARET CROWELL.

419 Caroline.

ANITA ASHLEY.

420 The Gauze Shawl.

CHARLES BITTINGER.

421 The Black Ribbon.

*PAINTINGS IN OIL.*

---

ALEXANDER HARRISON.

422 Gray Weather.

WILLIAM M. CHASE.

423 The Deserted Beach.

PRINCE PIERRE TROUBETZKOY.

424 Master M. William Wright.

LILLA CABOT PERRY.

425 On the Salt Marshes.

ALONZO ST. GEORGE HUNTINGTON.

426 Sunlight: Clécy, Calvados.

HENRY PRELLWITZ.

427 The Gale.

FRANK FOWLER.

428 Girl in Yellow.

FREDERICK CARL FRIESEKE.

429 Girl and Mirror.

JOSEPH R. DECAMP.

430 Portrait of a Boy.

EDWIN D. CONNELL.

431 La Rentrée.

ELLA SHELDON TIEL.

432 Hon. Clinton Rogers Woodruff.



*PAINTINGS IN OIL.*

---

MARY E. DICKSON.

433 First Lesson.

FREDERICK KUMMER.

434 A Summer Sea.

ALICE MUMFORD.

435 La Gracia.

ELLEN WETHERALD AHRENS.

436 Portrait of Elwood Johnson, Esq.

Lent by Penn Mutual Life Insurance Co.

CHARLES J. TAYLOR.

437 The Dreary Day.

ALBERT FELIX SCHMITT.

438 In the Summer Holidays.

BRUCE CRANE.

439 Harvesting.

Lent by Peter A. Schemm, Esq.

W. L. LATHROP.

440 By the River.

ELINOR EARLE.

441 Portrait Study.

FREEMAN W. SIMMONS.

442 Portrait of Lady.

CHRIST WALTER.

443 A Summer Evening.

*PAINTINGS IN OIL.*

---

HENRY SINGLEWOOD BISBING.

444 The Pond: Evening.

REYNOLDS BEAL.

445 The Ada Belle.

HELEN MILLER WELLENS.

446 Portrait of Miss C.

M. JEAN MCLANE.

447 Portrait of Young Man.

WALTER L. GREENE.

448 Winter Evening.

ADAM EMORY ALBRIGHT.

449 Fighting Indians.

BIRGE HARRISON.

450 Golden Sunset.

ELIZABETH CURTIS.

451 York River.

JOHN SLOAN.

452 The Model.

EDWARD H. BARNARD.

453 A Blue Haze.

ELIZABETH CURTIS.

454 Maine Coast.

*PAINTINGS IN OIL.*

---

EDWARD DUFNER.

455 Portrait of Mme. D.

F. HUTTON SHILL.

456 Doc.

CARLETON WIGGINS.

457 Sombre Days.

MILNE RAMSEY.

458 Peaches.

ROBERT W. VONNOH.

459 Portrait of the late John C. Bullitt.

Lent by Law Association of Philadelphia.

HELEN MILLER WELLENS.

460 Portrait of J. C. W.

BIRGE HARRISON.

461 Fisherman's Cottage by Moonlight,

GEORGE HOWLAND.

462 Heath near the Zuyder Zee.

EDWARD DUFNER.

463 Quiet Interior.

MAY S. HAYDOCK.

464 Morning on the Lagoon: Venice.

465 Sailboat on the Lagoon: Venice.

466 In the Luxembourg Garden.

*PAINTINGS IN OIL.*

---

JAMES HAGAMAN.

467 Marine : Evening.

HUGH H. BRECKENRIDGE.

468 A Village Street.

LEE LUFKIN KAULA.

469 Portrait of My Father.

## WEST CORRIDOR.



JOHN IRWIN BRIGHT.

501 Autumn.

INEZ ABERNETHY.

502 Reverie.

WALTER NETTLETON.

503 The Imprisoned Brook.

DWIGHT BLANEY.

504 Solitude.

EDMUND C. TARBELL.

505 Schooling the Horses.

REBECCA N. VAN TRUMP.

506 Miss Eleanor Boyd of Scotland.

CHARLES WARREN EATON.

507 On the Bruges Canal.

PAUL DOUGHERTY.

508 Sunset after Rain from San Giorgio.

MARY F. R. CLAY.

509 Portrait of Captain A. A. C.

CHARLES HOPKINSON.

510 Portrait of a Breton Woman.

*PAINTINGS IN OIL.*

---

BEN FOSTER.

511 Late Afternoon in the Litchfield Hills.

M. L. MACOMBER.

512 Death and the Captive.

A. BREWSTER SEWELL.

513 Portrait of Child.

H. M. WALCOTT.

514 A Gray Day in France.

ALICE ARCHER SEWALL JAMES.

515 Portrait.

Lent by Rev. Frank Sewall.

CHARLES P. GRUPPE.

516 A Day in March.

STEPHEN J. FERRIS.

517 Portrait of J. L. G. Ferris.

NANCY M. FERGUSON.

518 Moonlight : Original Composition.

ALEXANDER SCHILLING.

519 Moonlight.

Lent by Mrs. S. Stein.

H. L. HILDEBRANDT.

520 Mending the Net.

*PAINTINGS IN OIL.*

---

THOMAS EAKINS.

521 A Monsignor.

Lent by Right Rev. J. F. Loughlin, D.D.

GEORGE M. BRUESTLE.

522 A Snow Scene: Long Island.

MARY F. R. CLAY.

523 Portrait of Miss A.

CONSTANCE CURTIS.

524 Felicie.

MARGARET WARD SILVIS.

525 Portrait of Mrs. S.

ELIZABETH V. TAYLOR.

526 Portrait Sketch of Miss A. Pleadwell.

CHARLES C. CURRAN.

527 Young Woman with Water-Lilies.

LUCY D. HOLME.

528 Portrait Study.

WILLIAM H. MILLER.

529 Portrait of the late Louis Wister.

Lent by Mrs. Charles P. Keith.

MARIE DANFORTH PAGE.

530 A Looking-Glass Portrait.

NANCY M. FERGUSON.

531 Landscape: Original Composition.

*PAINTINGS IN OIL.*

---

CHARLES FREDERIC RAMSEY.

532 Portrait Study.

LILLIAN BURK MEESER.

533 Portrait of Miss L.

PARKE C. DOUGHERTY.

534 Moonlight at Montigny.

JOHN SLOAN.

535 Portrait of George Sotter.

E. E. RICHARDS.

536 Dutch Interior.

ALBERT HUMPHREYS.

537 First Communion: Paris.

NICOLA D'ASCENZO.

538 A Study.

THOMAS EAKINS.

539 The Translator.

Lent by Dr. Hugh T. Henry.

GEORGE LUKS.

540 East Side: New York City.

JAMES WILSON MORRICE.

541 A. Venice: La Nuit.

FREDERICK CARL FRIESEKE.

542 Study of the Nude.



*PAINTINGS IN OIL.*

---

BLANCHE DILLAYE.

543 The Going Down of the Sun.

GEORGE H. LEONARD, JR.

544 The Lock: Early Moonrise.

ARTHUR HOEBER.

545 Clearing after Rain.

546 September Moon: Cape Cod.

JOHN SLOAN.

547 Portrait of Mlle. Hélène Corbin.

JOHANNA WOODWELL HAILMAN.

548 The Rapids: Niagara.

ALBERT HUMPHREYS.

549 Autumn Landscape.

EDWARD A. RORKE.

550 The Sentinels.

## CENTRE CORRIDOR.



JOHN H. RECKNAGEL, JR.

555 Portrait of a Young Woman.

BENJAMIN C. PORTER.

556 Portrait of Mary Alexander.

Lent by Charles B. Alexander, Esq.

FLORENCE THAW.

557 Portrait of Barbara.

Lent by Alexander Blair Thaw, Esq.

CAROL H. BECK.

558 Portrait.

Lent by Mrs. James M. Beck.

ELSA KOENIG.

559 Angelo.

WILLIAM M. PAXTON.

560 Sun, Wave, and Breeze.

L. M. GENTH.

561 Girl with a Mirror.

CLARA L. GODWIN.

562 Portrait of a Young Lady.

E. IRVING COUSE.

563 Indian Resting.

MARIE DANFORTH PAGE.

564 Miss Margaret Fay.

*PAINTINGS IN OIL.*

---

DONALD SHAW MACLAUGHLAN.  
565 The Smithies.

ELIZABETH H. INGHAM.  
566 Pantheon from the Basin.

FREDERICK NUNN.  
567 A Rural Spot.

ELENORE PLAISTED ABBOTT.  
568 Sketch.

FREDERICK NUNN.  
569 Snow Scene.

CHARLES P. GRUPPE.  
570 Gray Day at the Hague.

MARY BREWSTER HAZELTON.  
571 Portrait of Mrs. Joshua D. Upton.  
Lent by J. D. Upton, Esq.

PHILIP L. HALE.  
572 Horseshoe Falls.

CHARLES BREGLER.  
573 Portrait of a Young Man.  
Lent by Henry Ritter, Esq.

ALBERT FELIX SCHMITT.  
574 Miss B.

WILLIAM P. BURPEE.  
575 Near the Close of a Winter Day.

*PAINTINGS IN OIL.*

---

CHARLES P. GRUPPE.

576 A Cozy Corner.

MARY SMYTH PERKINS.

577 Portrait of Miss Alice Perkins.

ISABEL ROSS.

578 Mother and Child.

JOHN SLOAN.

579 Portrait.

THOMAS EAKINS.

580 Portrait of the Very Rev. J. J. Fedigan,  
O.S.A., Ex-Provincial.

Lent by Villa Nova College.

PAUL K. M. THOMAS.

581 Portrait: Charles C. Harrison, LL.D.

Lent by Department of Dentistry, U. of P.

GEORGE MCCORD.

582 Windsor Castle.

Lent by Catholina Lambert, Esq.

DANIEL GARBER.

583 Portrait.

Lent by Miss Gwendolen Nathans.

SIMON H. VEDDER.

584 Summer Sleep.

WILLIAM ROELOFS.

585 Sketch.

Lent by Arthur Roelofs, Esq.

*PAINTINGS IN OIL.*

---

MARY SMYTH PERKINS.

- 586 Sketch.
- 587 Garden of the Luxembourg.
- 588 Fountain of the Luxembourg.
- 589 The Carrousel.

MARY D. RITCHIE.

- 590 A Bleak Day.

WILLIAM SARTAIN.

- 591 Near Algiers.

MAY A. POST.

- 592 A Peaceful Family.

LOUIS KRONBERG.

- 593 Portrait of Mrs. C.

THOMAS EAKINS.

- 594 Portrait of Charles E. Dana.  
Lent by Charles E. Dana, Esq.

SUSAN SMYTH HAESLER.

- 595 Rhododendrum.  
Lent by Conrad Frederic Haeseler, Esq.

JESSIE HAMILTON.

- 596 Portrait: A Lady Reading.

RICHARD BLOSSOM FARLEY.

- 597 Portrait of Miss Sallie A. Williams.

J. COGGESHALL WILSON.


- 598 Portrait.

EDMUND C. TARBELL.

- 599 Portrait Group.  
Lent by Mrs. Slater.

WATER COLORS,  
PASTELS, ETC.

GALLERY E  
& CORRIDORS.

- LOUISE WOOD.   
600 A Cottager: Yorkshire.
- MARY VAN DER VEER.  
601 They Fish No More Up the Zuyder Zee.
- MABEL WILLIAMSON.  
602 A Bit of Old New York.
- M. LOUISE STOWELL.  
603 The Net.
- SEARS GALLAGHER.  
604 Interior.
- RHODA HOLMES NICHOLS.  
605 Boat Yard: Provincetown.
- WINSLOW HOMER.  
606 Hogs and Cedar: About to Turn Turtle.  
607 Saguenay River.  
608 Coming Storm.
- EMERLINE M. HOLBROOK.  
609 Low Tide at St. Ives.

*WATER COLORS AND OTHERS.*

---

WINSLOW HOMER.

- 610 Street Corner: Santiago.
- 611 Inland Water: Bermuda.
- 612 After the Tornado.
- 613 The Pioneer.
- 614 Turtle Pound.
- 615 Rum Cay.
- 616 Grand Discharge.

W. T. THOMSON.

- 617 Late Afternoon.

CHARLES WELLINGTON FURLONG.

- 618 A Street in Tangier.

MARY VAN DER VEER.

- 619 Winding the Ball.

JANE W. BOSTWICK.

- 620 The Gray Kimono.

ELIZABETH NOURSE.

- 621 Paysanne de Penmarch.

EMERLINE M. HOLBROOK.

- 622 The Harbor of St. Ives.

MAURICE B. PRENDERGAST.

- 623 The Bridle Path.

OLIVER AINSLEY.

- 624 A Hopi Indian.

*WATER COLORS AND OTHERS.*

---

MAURICE FELL.

625 Master Frank.

GEORGE WALTER DAWSON.

626 An Amalfi Garden Path.

SYDNEY RICHMOND BURLEIGH.

627 In the Kamp-Veersche Toren.

ELIZABETH H. WATSON.

628 Winter.

JAMES HENRY MOSER.

629 Boat Carnival: Lake Piacid Club.

FLORENCE FRANCIS SNELL.

630 The Red Flower.

FERNAND LUNGREN.

631 The Pool and Tower Bridge from London  
Bridge.

MARIA JUDSON STREAN.

632 Gray Day: Nova Scotia.

JAMES H. GARDNER-SOPER.

633 The Japanese Legend of Urashima and the  
Sea-Princess.

WALTER L. PALMER.

634 The White World.

CHARLES WARREN EATON.

635 An Exmoor Village.



*WATER COLORS AND OTHERS.*

---

ARTHUR CLIFTON GOODWIN.

636 Morning: Boylston Street, Boston.

CADWALLADER WASHBURN.

637 Portrait of Bradstreet San.

GEORGE FERDINAND OF, JR.

638 Sunset.

HENRY B. SNELL.

639 House by the Sea.

HERMANN DUDLEY MURPHY.

640 Girl Reading.

WALTER L. PALMER.

641 San Giorgio, Venice.

M. R. STURGIS.

642 Pine Trees.

ROBERT ARTHUR.

643 Marine.

ALETHEA HILL PLATT.

644 Shadows.

ROBERT COLEMAN CHILD.

645 Harbor Lights.

MAURICE B. PRENDERGAST.

646 Gloucester.

*WATER COLORS AND OTHERS.*

---

COLIN CAMPBELL COOPER.

647 Snow: Laren, Holland.

SUSAN B. P. ROBINS.

648 A Dutch Farm-House.

SARAH C. SEARS.

649 Late Afternoon.

650 Poppies.

CHARLES C. CURRAN.

651 The Rain.

M. JEAN MCLANE.

652 Portrait Sketch of Mr. J.

GEORGE GIBBS.

653 D'Artagnan.

ROBERT ARTHUR.

654 Maine Coast.

SARAH C. SEARS.

655 Study of Petunias.

656 Noonday.

JOHN J. DULL.

657 Gray Day.

CHARLES E. HEIL.

658 Passing of the Elephants.

CHARLES WELLINGTON FURLONG.

659 Street Scene: Tangier.

*WATER COLORS AND OTHERS.*

---

MARY VAN DER VEER.

660 Vollendam Children.

JAMES KINSELLA.

661 Windmill at Zaandam.

GENJIRO YETO.

662 Girl with Flower.

CHARLES WELLINGTON FURLONG.

663 Old Towers: Contances, France.

EDITH PENMAN.

664 Moonlight.

CHARLES H. WOODBURY.

665 From the Cliff.

HÉLENÈ F. METCALFE.

666 The Fancy Work.

CHILDE HASSAM.

667 Broad Stairs.

M. O. KOBBE.

668 Portrait.

W. V. CAHILL.

669 Moonlight.

LOUIS RHEAD.

670 A Quiet Hour.

EMMA LAMPERT-COOPER.

671 The Boston Stump: England.

*WATER COLORS AND OTHERS.*

---

CHARLES H. WOODBURY

672 Fishermen.

ANNIE G. SYKES.

673 A Bit of Farm Life.

HENRY B. SNELL.

674 An Old Schooner.

FRED L. PITTS.

675 Cooper's Point : Evening.

HENRY B. SNELL.

676 Showery Weather.

CHARLES P. GRUPPE.

677 October Day in Laren.

WILLIAM RITSCHER.

678 Ebb Tide : Holland.

FERNAND LUNGREN.

679 Pyramids of Geizeh : Evening.

CLIFFORD P. GRAYSON.

680 Mid-day : Intervale.

L. C. HUNTER.

681 Geraniums.

WILL S. BUDWORTH.

682 Old Barns at Axton.

*WATER COLORS AND OTHERS.*

---

CHARLES E. DANA.

683 El Bab el Metowali, Cairo.

MYRA B. SPAFORD.

684 Roses.

CHARLOTTE B. COMAN.

685 A Country Home.

WALTER L. PALMER.

686 La Salute at Night.

687 Interior : San Marco, Venice.

BERTHA D. SANDERS.

688 The Star and the Pool.

WALTER L. PALMER.

689 Court of the Mosque, Alhambra.

690 La Salute at Noon.

691 La Salute at Sunset.

692 La Salute at Twilight.

693 Interior : Seville Cathedral.

SUSAN H. BRADLEY.

694 Mokattam Hills, from Cairo.

CHARLES E. DANA.

695 Old Court of the Oil Merchants : Cairo.

JOHN J. DULL.

696 Burn's Run.

HAROLD B. WARREN.

697 Florence.

*WATER COLORS AND OTHERS.*

---

EMMA LAMPERT-COOPER.

698 Lincoln Cathedral: Gray Weather.

ALETHEA HILL PLATT.

699 Still Life.

HARRIET SARTAIN.

700 Study of Roses.

FREDERICK BALLARD WILLIAMS.

701 After Storm.

RALPH T. STEVENSON.

702 An Old Shoemaker's Shop.

KATHERINE LEVIN FARRELL.

703 Returning Home.

HENRY B. SNELL.

704 The Red Lighthouse.

EMMA LAMPERT-COOPER.

705 Wells Cathedral: The Vicar's Close.

C. C. MASE.

706 The Shipyard in Winter.

JOHN J. DULL.

707 On Darby Creek.

JOHN C. HUFFINGTON.

708 Day in March.

*WATER COLORS AND OTHERS.*

---

HOWARD HELMICK.

709 In Memoriam.

SUSAN H. BRADLEY.

710 Santa Catalina.

ELIZABETH NOURSE.

711 Le Berceau: Penmarch.

MARGARET FERNIE EATON.

712 Grandma.

SUSAN H. BRADLEY.

713 Santa Catalina.

C. S. KAELIN.

714 Fishing-Boats at Dock: Gloucester.

BEN FOSTER.

715 Autumn Moonrise.

GENJIRO YETO.

716 Wistaria.

SUSAN H. BRADLEY.

717 Sierras from Santa Barbara.

CHARLES H. FROMUTH

718 Dock Decoration: Harmony.

E. M. SCOTT.

719 Yellow Roses.

WATER COLORS AND OTHERS.

---

ETHELBERT W. BROWN.

720 Evening in Belgium.

C. S. KAELIN.

721 In Gloucester Harbor.

ARTHUR CLIFTON GOODWIN.

722 Cross-Walk to Boston Public Garden.

JOHN WESLEY LITTLE.

723 Carn's Barn.

EMMA LAMPERT-COOPER.

724 Lincoln Cathedral from the Field.

GENJIRO YETO.

725 Chrysanthemums.

GEORGE WALTER DAWSON.

726 A Fish-boat Mooring: Venice.

LOUISE WOOD.

727 A Stitch in Time.

JOHN J. DULL.

728 Bramble Patch.

MAURICE FEELY.

729 Portrait Study.

JOHN J. DULL.

730 The Old Mill.



*WATER COLORS AND OTHERS.*

---

MARGARETTA BONSALE TAYLOR.

731 Saint Malo: Brittany.

CURTIS WAGER-SMITH.

732 Portrait en Médaille.

MAY A. POST.

733 Children of Volendam.

EVERETT SHINN.

734 House of Betsy Ross.

EUGÈNE CASTELLO.

735 Snow in Delhi Street.

GERTRUDE J. BARNES.

736 In Irish Waters.

WALTER MACEWEN.

737 Prayer.

738 The Sisters.

LILLIAN BURK MEESER.

739 Lady of the Old School.

WALTER MACEWEN.

740 Kite-Flying.

WALTER L. PALMER.

741 The Summer Palace, Granada.

E. MARS.

742 At the Window.

WATER COLORS AND OTHERS.

---

WALTER MACEWEN.

743 Reading.

744 Meditation.

MINNIE EDNA CHESTER.

745 French Peasant: Etaples.

CHARLES L. FUSSELL.

746 Spring Blossoms.

CLIFFORD P. GRAYSON.

747 Evening: Annisquam.

LUCY M. STICKNEY.

748 June in Italian Tyrol.

PATRICK MCLOSKEY WESTFELDT.

749 Sprig of Kalmia.

LOUIS RHEAD.

750 Blossoms.

HOWARD HELMICK

751 A Scullion.

FERNAND LUNGREN.

752 Westminster Bridge and Clock-Tower.

753 The Passing Train.

JEROME MYERS.

754 A Candle-Seller.

WATER COLORS AND OTHERS.

---

HOWARD HELMICK.

755 Evening.

ANDRÉ KORONSKI.

756 Book-Plates.

FLORENCE SCOVEL SHINN.

757 Illustration for *The Flight of Pony Baker*.

F. W. SHEAFER.

758 September Trees.

JOSEPH PENNELL.

759 Etchings of London.

DONALD SHAW MAC LAUGHLAN.

760 Cour des Gobelins.

MARGARET HARDON WRIGHT.

761 Cathedral at Quimper.

CARL BUERGERNISS.

762 Scene from Bridgeton.

HENRY WOLF.

763 Portrait of a Lady: After Sir Thomas  
Lawrence.

MAURICE H. STERNE.

764 Jackson Street Pier.

*WATER COLORS AND OTHERS.*

---

CARL BUERGERNISS.

765 Scene from Bridgeton.

ARTHUR ALLEN LEWIS.

766 Michael Robinson.

767 Sibyl.

CARL SIPPEL.

768 A Gentle Model.

HENRY WOLF.

769 Portrait of Cynthia: After Cecilia Beaux.

770 Portrait of Gerard Dow: Painted by Himself.

ALBERT WINSLOW BARKER.

771 A Gray Afternoon.

CLARENCE HERBERT ROWE.

772 Boulogne Fishermen.

WILLIAM K. SWEENEY.

773 Lion's Head: Sleeping.

DONALD SHAW MAC LAUGHLAN.

774 The Tannery.

775 Etchings.

JOHN SLOAN.

776 Etched Illustrations for Works of Ch. Paul  
de Kock.

MAURICE H. STERNE.

777 Labor Day.

WATER COLORS AND OTHERS.

---

CLARENCE HERBERT ROWE.

778 Montreuil Market-Place.

WILLIAM K. SWEENY.

779 Lion's Head: Watching.

HENRY WOLF.

780 Lady with the White Shawl: After William  
M. Chase.

781 Portrait of George Washington: After  
Gilbert Stuart.

ALBERT WINSLOW BARKER.

782 The Quarry-Edge.

CLARENCE HERBERT ROWE.

783 Boulogne Fishermen.

WILLIAM K. SWEENY.

784 Tiger's Head: Watching.

JOSEPH PENNELL.

785 Etchings of Venice.

MAURICE H. STERNE.

786 Morning on the Beach.

ARTHUR ALLEN LEWIS.

787 Ouistreham.

MAURICE H. STERNE.

788 On Jamaica Bay.

*WATER COLORS AND OTHERS.*

---

ARTHUR ALEN LEWIS.

789 The Procession.

DONALD SHAW MAC LAUGHLAN,

790 Quai de l'Hôtel de Ville.

CARL BUERGERNISS.

791 Scene from Bridgeton.

792 Scene from Bridgeton.

ANDRÉ KORONSKI.

793 Book-Plates.

FLORENCE SCOVEL SHINN.

794 Cousin Frances Left the Table in Disgust.

795 Illustration for The Flight of Pony Baker.

MALCOLM MCGREGOR JAMIESON, JR.

796 After a Rain.

797 Water-Carrier.

M. O. KOBBE.

798 Music.

MAURICE H. STERNE.

799 The Clam-Diggers.

STEPHEN J. FERRIS.

800 The Gazelle.

801 Perfumes of Araby.

WATER COLORS AND OTHERS.

---

CHARLOTTE HARDING.

802 In the Moonlight.

Lent by The Century Company.

WILLIAM WILLET.

803 Prophecies Fulfilled.

ELIZABETH SHIPPEN GREEN.

804 Illustration for Perdita's Lovers.

J. HORACE RUDY.

805 St. Peter.

MARIA J. STREAN.

806 Pastel Sketch : Connecticut.

WILLIAM CUSHING LORING.

807 Study of Child's Head.

E. DIMOCK,

808 New London Docks.

809 New-England Sunday.

810 After Church.

M. O. KOBBE.

811 Portrait.

E. DIMOCK.

812 Poultry Show

813 New London Docks.

HOWARD HELMICK.

814 An Irish Schoolmaster.

*WATER COLORS AND OTHERS.*

---

HAMILTON EXETER FIELD.

815 Beg Mail.

D. D. PLYMPTON.

816 Here We Go 'Round the Mulberry Bush.

WILLIAM CUSHING LORING.

817 Study of Girl's Head.

E. DIMOCK.

818 Three Old-Fashioned Girls.

819 New-England Sunday.

820 The Sewing-Circle.

FERNAND LUNGREN.

821 Waterloo Bridge and Victoria Embankment.

822 Piccadilly Circus: Wet Evening.

ELIZABETH SHIPPEN GREEN.

823 Illustration for Perdita's Simple Cupboard.

824 Illustration for Perdita's Lovers.

825 Illustration for Perdita's Simple Cupboard.

CHARLOTTE HARDING.

826 The Reconciliation. Illustration for A  
Forsaken Temple.

Lent by The Century Company.

827 Milly sat Sobbing. Illustration for A For-  
saken Temple.

ELIZABETH SHIPPEN GREEN.

828 Two Illustrations for A Tree-Top Library.



WATER COLORS AND OTHERS.

---

CHARLOTTE HARDING.

829 Cover Design.

Lent by Collier's Weekly.

ELIZABETH SHIPPEN GREEN.

830 Illustrations for Perdita's Simple Cup-board.

831 Illustration for Perdita's Lovers.

832 Illustration for A Tree-Top Library.

JESSIE WILLCOX SMITH.

833 A Mother's Day : in the Garden.

834 A Mother's Day : Morning.

835 A Mother's Day : Checkers.

836 Title-Page for A Mother's Day.

837 A Mother's Day : Supper.

838 A Mother's Day : Bedtime.

839 A Mother's Day : Fairy-Tales.

840 Tail-Piece for A Mother's Day.

Series Lent by Messrs. Charles Scribner's Sons.

THORNTON OAKLEY.

841 Zwändrecht.

GEORGE M. NIEDECKEN.

842 Casa Rosso.

ELIZABETH SHIPPEN GREEN.

843 The Little Piano.

Lent by Mrs. Ellis Ames Ballard.

*WATER COLORS AND OTHERS.*

---

VIOLET OAKLEY.

- 844 Illustrations for *The Story of Vashti*.  
Lent by Messrs. Doubleday, Page & Co.
- 845 Christmas Cover Design for *St. Nicholas*.  
Lent by The Century Company.
- 846 June.  
Lent by Messrs. Doubleday, Page & Co.
- 847 Illustrations for *The Story of Vashti*.  
Lent by Messrs. Doubleday, Page & Co.
- 848 Illustrations for *The Story of Vashti*.  
Lent by Messrs. Doubleday, Page & Co.
- 849 Christmas Cover Design for *The Century*.  
Lent by The Century Company.
- 850 Faith : Design for Stained Glass Window.

BERTHA C. D. BATES.

- 851 Illustration for *Where the Wind Blows*.

CLARENCE HERBERT ROWE.

- 852 New York Subway.

BERTHA C. D. BATES.

- 853 Headband for *Where the Wind Blows*.

ELLEN MACAULEY.

- 854 Poster for the Public Baths Association.  
Lent by the Public Baths Association of Philadelphia.

BERTHA C. D. BATES.

- 855 Illustration for *Where the Wind Blows*.

*WATER COLORS AND OTHERS.*

---

ELIZABETH SHIPPEN GREEN.

856 Illustration for *Perdita's Lovers*.

857 Illustration for *Perdita's Simple Cupboard*.

CHARLOTTE HARDING.

858 *A Mennonite Woman*.

Lent by McClure's Magazine.

ELIZABETH SHIPPEN GREEN.

859 Illustration for *The Story of Annabel and Amoris*.

Lent by Miss Henrietta Cozens.

THORNTON OAKLEY.

860 *Wieldrecht*.

CHARLOTTE HARDING.

861 *The Friends: Illustration for A Forsaken Temple*.

Lent by The Century Company.

862 *Christiana: Illustration for A Forsaken Temple*.

Lent by The Century Company.

PAULA B. HIMMELSBACH.

863 *Les Berges*.

GEORGE NIEDECKEN.

864 *Reflections*.

MINIATURES.  
NORTH TRANSEPT.



SARA JULIA NEWLIN.

901 Portrait of Mrs. F.

JANE H. VALENTINE.

902 Portrait of Miss Elizabeth Hoffman.

AMY OTIS.

903 Portrait of Mr. William A. Ingham.

Lent by Mrs. William A. Ingham.

LUCY MAY STANTON.

904 Miniature Portrait in Black and White.

EMMA TROTH.

905 Portrait.

Lent by Chester Taft, Esq.

SARAH YOCUM MCFADDEN.

906 Portrait of Dr. William H. McFadden.

A. F. HELBLING.

907 Portrait of Mr. C.

EDITH DEAN WEIR.

908 Lily of the Annunciation.

MINIATURES.

---

ELIZABETH H. LOESER.

909 Miss S.

JANE H. VALENTINE.

910 Miniature Portrait of Mrs. H.

Lent by Mrs. Burnham.

HELEN JOSEPHINE BAKER.

911 Case of Miniatures.

AMY OTIS.

912 Portrait of Miss Esther Warner Kelly.

Lent by Miss M. Kuhl Kelly.

ADELE VAN GUNTEN.

913 Case of Miniatures.

Lent by H. C. Francis, Esq., Mrs. R. F.  
Avery, and Dr. H. Jayne.

MIHRAN H. KEVORKIAN.

914 Portrait of Robert M. Lindsay.

Lent by Robert M. Lindsay, Esq.

ELEANOR BEALL MCPARLIN.

915 Two Miniatures.

MABEL SAXE GOULD.

916 Miriam Hayes.

Lent by Mrs. Jessie Vaché Hayes.

917 Rev. Lawrence M. Colfelt.

918 Mrs. Jane B. Gould.

Lent by Mrs. Jane B. Gould.

MINIATURES.

---

ALICE BECKINGTON.

919 Portrait Miniature.

ETHELLYN BREWER.

920 Portrait of Mrs. J. C. T.

NANNA MATTHEWS BRYANT.

921 Study.

ALICE BECKINGTON.

922 Portrait Miniature : Agnes.

ELSIE THOMAS HERRING.

923 Miniature.

Lent by Mrs. James Burtis.

924 Miniature.

EMILY DRAYTON TAYLOR.

925 Miss Annie H. Clark.

Lent by Mrs. Howard Clark.

A. M. ARCHAMBAULT.

926 Miniature of Mrs. G.

Lent by E. B. Gumpert, Esq.

W. HOMER WOOD.

927 Portrait of Miss F.

LILY B. PETERSON.

928 Gladys : Portrait Study.

MINIATURES.

---

EMMA TROTH.

929 Portrait.

L. W. SALISBURY.

930 Mr. S.

RHEA D. WATSON.

931 Portrait of Mrs. James M. Beck.

M. BELL IRVINE.

932 Portrait Sketch.

IRVA STRUTHERS.

933 Mrs. Frederick T. Mason.

LUCY MAY STANTON.

934 An Old Southern Mammy.

W. HOMER WOOD.

935 Portrait of Mrs. W.

M. BELL IRVINE.

936 Portrait of Mrs. W. R. Reitzell.

HELEN DUNLAP HUNT.

937 Portrait of Miss H.

LAVINIA EBBINGHAUSEN KELLY.

938 Portrait of Mrs. P.

CAROLINE S. YARDLEY.

939 Study of an Old Woman.

MINIATURES.

---

M. BELL IRVINE.

940 Portrait.

MARY MEIN CARTER.

941 Portrait of Mrs. Charles Carter.

Lent by Mrs. J. G. Cassatt.

LAVINIA EBBINGHAUSEN KELLY.

942 Die Burgdame.

943 Portrait of Mrs. M. L. E.

944 Portrait of Mr. B.

MARY MEIN CARTER.

945 Portrait of Mr. A.

ALICE BECKINGTON.

946 Portrait Sketch: Mrs. Buford.

WALTER DOUGLAS.

947 The Harvesters.



## MINIATURES.

### EXHIBIT OF THE AMERICAN SOCIETY OF MINIATURE PAINTERS.



#### LAURA COOMBS HILLS.

- 949 Misses May, Carrie, and Helen Pratt.
- 950 Boy Blue.
- 951 Billy.
- 952 Mrs. Robert Hartshorne.
- 953 Mrs. George Pratt.
- 954 Miss Natalie Wood.
- 955 Mrs. Frederick Billings.
- 956 Mrs. Thomas Motley, Jr.

#### VIRGINIA REYNOLDS.

- 957 Portrait of Mrs. Thiers.
- 958 Portrait of Miss Moore.

#### MARIA JUDSON STREAN.

- 959 Dorothy.

#### VIRGINIA REYNOLDS.

- 960 Lady on Balcony.

#### MARIA JUDSON STREAN.

- 961 Eliza.

#### LUCIA FAIRCHILD FULLER.

- 962 Portrait of a Boy.

MINIATURES.

---

BRENETTA HERRMAN.

963 Portrait of C. D. H.

URSULA WHITLOCK.

964 Miniature Portrait.

FRANCES LOUISE THOMSON.

965 Portrait of Mrs. McCullough.

WILLIAM J. BAER.

966 Betty.

967 My First Born.

968 Friends.

MARGARET KENDALL.

969 In the Brook.

ALICE HAM BREWER.

970 Portrait of Mr. F. L. B.

EULABEE DIX.

971 Petit Portraiture.

CLARA F. HOWARD.

972 Fanny.

ETHEL BLANCHARD.

973 Mr. Roswell M. Field.

F. H. WELLINGTON.

974 Wellington.

MINIATURES.

---

LUCIA FAIRCHILD FULLER.

975 Portrait.

G. A. FFOULKES.

976 Portrait.

JOHN A. MCDUGALL.

977 Zilla.

978 Mrs. Rebecca Morse.

979 Dick.

980 Mrs. Edmund Sinclair.

MARIA JUDSON STREAN.

981 Case of Five Miniatures.

CAROLINE D. YARDLEY.

982 Portrait Study.

EDITH DEAN WEIR.

983 Miniature Portrait.

FLORENCE H. DREYFOUS.

984 Portrait Study.

FREDERICK A. PICKETT.

985 Portrait.

ALTA E. WILMOT.

986 Mrs. James Van Dusen.

EFFIE CORWIN TRADER.

987 Study.

MINIATURES.

---

CLAIRE SHUTTLEWORTH.

988 Mr. George B. Rodgers.

M. H. TANNAHILL.

989 Two Children.

CLARA F. HOWARD.

990 Maria Judson Streat.

HELEN M. TURNER.

991 Nelson.

FREDERICK A. PICKETT.

992 Portrait.

EFFIE CORWIN TRADER.

993 Portrait.

ESTHER L. COFFIN.

994 Portrait.

J. STAPLES ROWE.

995 Portrait of a Lady.

LYDIA FIELD EMMETT.

996 Portrait of a Gentleman.

LUCY M. STICKNEY.

997 Portrait of Eliza Turnbull Cheney.

JOSEPHINE JESSUP.

998 Portrait.

MINIATURES.

---

ALICE HAM BREWER.

999 The Martyr.

PAUL KING.

1000 Portrait of Robert D. Gauley.

CARL WEIDNER.

1001 Mrs. D.

ALICE HAM BREWER.

1002 Portrait of Mrs. C. H. H.

ETHEL BLANCHARD.

1003 Donald.

R. W. KIRKHAM.

1004 Reminiscent.

ALICE HAM BREWER.

1005 Portrait of Mr. C. H. H.

M. H. TANNAHILL.

1006 Study of Girl and Kitten.

CARL WEIDNER.

1007 Elizabeth Eastman.

ALICE HAM BREWER.

1008 Lisbeth.

VIRGINIA REYNOLDS.

1009 Portrait of Wellington J. Reynolds.

MINIATURES.

---

CLARA F. HOWARD.

1010 Study.

MARGARET KENDALL.

1011 A Spirit of the Wood.

SALLIE CROSS.

1012 Miss Gaffield.

ISAAC A. JOSEPHI.

1013 Miss M.

1014 Mrs. James Newton Gunn

1015 Mrs. E. V. Stuart.

WILLIAM J. WHITTEMORE.

1016 Study for a Portrait.

1017 The Child Dionysus.

## SCULPTURE.



JOHN MCLURE HAMILTON.

1101 My Mother.

STIRLING CALDER.

1102 Portrait Bust of a Boy.

GUTZON BORGLUM.

1103 General Grant: Group.

HENRY LINDER.

1104 Andirons: Morning and Evening.

GEORGE GREY BARNARD.

1105 The Maiden.

Lent by A. Blair Thaw, Esq.

SOLON H. BORGLUM.

1106 On the Border of the White Man's Land.

BIRTLEY CANFIELD.

1107 Child's Head.

Lent by C. J. King, Esq.

SCULPTURE.

---

GUTZAN BORGLUM.

1108 The Boer.

CHARLES GRAFLY.

1109 Portrait of James McManes.

Lent by Mrs. Rebecca Colfelt.

1110 In Much Wisdom.

1111 Portrait of Joseph Rodefer De Camp.

Lent by J. R. De Camp, Esq.

FRED G. R. ROTH.

1112 Chained Elephant.

1113 A Risky Trick.

1114 A Doubtful Footing.

CHARLES ALBERT LOPEZ.

1115 Bacchante.

ADOLPH A. WEINMAN.

1116 Portrait Relief.

CHARLES ALBERT LOPEZ.

1117 The Sprinter.

MARTHA JACKSON CORNWELL.

1118 Portrait Sketch.

Lent by Gibbons Gray Cornwell, Esq.

ADOLPH A. WEINMAN.

1119 Golfer.

1120 Golfer.



SCULPTURE.

---

H. LYMAN SAYEN.

1121 Medal.

MARTHA JACKSON CORNWELL.

1122 Mother and Child.

VINCENZO ALFANO.

1123 A Danae.

LEILA USHER.

1124 Portrait of Booker T. Washington.

ISIDORE KONTI.

1125 Despotie Age.

SAMUEL MURRAY.

1126 Portrait of Rev. William J. Bermingham.

H. HANLEY PARKER.

1127 Portrait: Mrs. Parker.

MARTHA JACKSON CORNWELL.

1128 Portrait Sketch of Mrs. Joseph Hemphill, Jr.

SOLON H. BORGLUM.

1129 Bull-Fight.

ELI HARVEY.

1130 Rampant Jaguar.

SCULPTURE.

---

ADOLPH A. WEINMAN.

1131 Portrait Relief.

LEILA USHER.

1132 La Morena.

MARTHA JACKSON CORNWELL.

1133 Portrait in Low Relief.

J. SCOTT HARTLEY

1134 Portrait.

Lent by Charles C. Curran, Esq.

MAX MAUCH.

1135 Sedition.

J. SCOTT HARTLEY.

1136 Portrait.

Lent by Charles C. Curran, Esq.

ELLA FINLEY.

1137 My Little Friend.

SAMUEL MURRAY.

1138 Sketch of a Child's Head.

JEROME CONNER.

1139 The Laborers: Group for Walt Whitman  
Memorial.

ADOLPH A. WEINMAN.

1140 Golf-Girl.

SCULPTURE.

---

ISAAC BROOME.

1141 Bust of an Elderly Lady.

Lent by Mrs. E. Clifford Wilson.

H. A. MACNEIL.

1142 Quang.

PEMBERTON L. LITTLE

1143 Amazon.

J. SCOTT HARTLEY.

1144 Mirth.

OLAF M. BRAUNER.

1145 Junior.

Lent by Herbert L. Pratt, Esq.

1146 Design for Clifton Beckwith Brown Medal.

MARY P. MIDDLETON.

1147 Portrait Sketch of Miss H.

H. A. MACNEIL.

1148 Pan-American Medal of Award.

Lent by Pan-American Exposition Company.

ISIDORE KONTI.

1149 Playing Children.

1150 Playing Children.

SCULPTURE.

---

CHARLES HENRY NIEHAUS.

1151 Joseph Jefferson, Esq.

GUTZON BORGLUM.

1152 Remorse.

JANET SCUDDER.

1153 Fountain: Small Boy Dancing.

KARL THEODORE FRANCIS BITTER.

1154 Thanatos.

GUTZON BORGLUM.

1155 Indians Pursued by U. S. Troops.

Lent by Philip A. Rollins, Esq.

GAIL SHERMAN.

1156 Portrait of Mrs. S.

1157 Portrait of Mr. D.

Lent by Mrs. F. Burnet Nash.

ALBERT LAESSLE.

1158 Turtle and Lizards.

VINCENZO ALFANO.

1159 Cicerone.

BESSIE POTTER VONNOH.

1160 A Sketch.

1161 Mother and Babe.

1162 Baby.

SCULPTURE.

---

AUGUSTUS SAINT GAUDENS.

- 1163 Portrait Medallion: Josephine Shaw Lowell.  
Lent by Mrs. C. R. Lowell.

BESSIE POTTER VONNOH.

- 1164 Portrait Relief.

DANIEL C. FRENCH.

- 1165 Bust of Rev. William S. Rainsford.  
Lent by Rev. W. S. Rainsford.

SAMUEL MURRAY.

- 1166 Portrait of Mrs. Borie.

STIRLING CALDER.

- 1167 Sketch Model for a Statue of Matthias W.  
Baldwin, with Pedestal.

SAMUEL MURRAY.

- 1168 Portrait Statuette of Rev. P. R. McDevitt.  
Lent by Rev. P. R. McDevitt.

CHARLES ALBERT LOPEZ.

- 1169 Maternity.

AUGUSTUS SAINT GAUDENS.

- 1170 Portrait: Medallion of Justice Horace Gray.

SAMUEL MURRAY.

- 1171 Sketch for Baldwin Monument.

SCULPTURE.

---

JOHANNA M. BOERICKE.

1172 Portrait Bust of Rev. E. F. Goerwitz.

ELI HARVEY.

1173 Family of Playing Leopards.

THOMAS SHIELDS CLARKE.

1174 To Princeton: Alma Mater.  
Lent by Princeton University.

ENID YANDELL.

1175 Lotus Flower: Model for Fountain.

LOUIS R. DOUGHERTY.

1176 Miniature Bust of F. D.

SERGEANT KENDALL.

1177 Portrait Bust of a Child.  
Lent by Mrs. LeRoy King.

ADOLPH A. WEINMAN.

1178 Ball-Pitcher.

CHARLES HENRY NIEHAUS.

1179 Rabbi Gottheil.

AUGUSTUS SAINT GAUDENS.

1180 Portrait of Mrs. Beaman.

ADOLPH A. WEINMAN.

1181 Bowler.

SCULPTURE.

---

ENID YANDELL.

1182 The Four Seasons : Sundial.

GUTZON BORGLUM.

1183 Portrait of Mr. Philip A. Rollins.

SAMUEL MURRAY.

1184 Portrait of Mrs. McDevitt.

Lent by Rev. P. R. McDevitt.

H. C. MERCER.

1185 The Shingle Maker.

1186 The Nation's Granary.

1187 The Dinner Horn.

1188 Indian Rock.

1189 The Bear.

1190 Clay Mosaic.

1191 Clay Mosaic.

SAMUEL MURRAY.

1192 Major Reynolds, U.S.A.

1193 Portrait of a Lady.


BESSIE POTTER VONNOH.

1194 His First Journey.

# NAMES OF ARTISTS

REPRESENTED IN THE PRESENT EXHIBITION.

The figures following the name refer  
to the numbers in this Catalogue.

- 
- Abbey, Edwin A., 18  
Abbott, Elenore Plaisted, 127, 568  
Abernethy, Inez, 502  
Abrams, Lucien, 131  
Ahrens, Ellen Wetherald, 436  
Aid, George C., 56  
Ainsley, Oliver, 624  
Albright, Adam Emory, 223, 449  
Alexander, John W., 51, 53, 55, 310, 312, 316, 318  
Alfano, Vincenzo, 1123, 1159  
Alten, Mathias, 17  
Anshutz, Thomas P., 172  
Archambault, A. M., 926  
Arthur, Robert, 643, 654  
Ashley, Anita, 420  
Baer, William J., 966, 967, 968  
Baker, Helen Josephine, 911  
Barker, Albert Winslow, 771, 782  
Barlow, Myron, 407  
Barnard, Edward H., 85, 453  
Barnard, George Grey, 1105  
Barnes, Gertrude J., 736  
Barney, Frank A., 153  
Bartlett, Frederic, 244



INDEX.

---

- Bates, Bertha C. D., 841, 853, 855  
Beal, Gifford, 157  
Beal, Reynolds, 155, 445  
Beaux Cecilia, 22, 29, 109  
Beck, Carol H., 558  
Beckington, Alice, 919, 922, 946  
Benson, Frank W., 101, 102, 104  
Bicknell, Frank A., 240  
Bisbing, Henry Singlewood, 54, 60, 248, 444  
Bitter, Karl Theodore Francis, 1154  
Bittinger, Charles, 421  
Blakelock, Ralph A. (deceased), 303  
Blanchard, Ethel, 973, 1003  
Blaney, Dwight, 106, 504  
Boericke, Johanna M., 1172  
Borglum, Gutzon, 1103, 1108, 1152, 1155, 1183  
Borglum, Solon H., 1106, 1129  
Bostwick, Jane W., 620  
Bower, Alexander, 80  
Bradley, Susan H., 694, 710, 713, 717  
Brauner, Olaf M., 1145, 1146  
Breckenridge, Hugh H., 34, 201, 468  
Bregler, Charles, 573  
Brewer, Alice Ham, 970, 999, 1002, 1005, 1008  
Brewer, Ethelbyn, 920  
Bridgman, Frederick A., 304  
Brigham, W. Cole, 48  
Bright, John Irwin, 501  
Broome, Isaac, 1141  
Brown, Ethelbert W., 15, 720  
Bruestle, George M., 522  
Bryant, Nanna Matthews, 921

- Budworth, Will S., 682  
 Buergermiss, Carl, 132, 762, 765, 791, 792  
 Bunce, Gedney, 7, 8, 9  
 Burbank, E. A., 126  
 Burleigh, Sydney Richmond, 627  
 Burpee, William P., 575  
 Cahill, W. V., 669  
 Calder, Stirling, 1102, 1167  
 Caliga, I. H., 143, 169  
 Canfield, Birtley, 1107  
 Cariss, H. T., 134  
 Carl, Kate A., 416  
 Carr, Lyell, 167  
 Carter, Mary Mein, 941, 945  
 Cassatt, Mary, 37  
 Castello, Eugene, 735  
 Chase, William M., 14, 16, 168, 203, 423  
 Chester, Minnie Edna, 745  
 Child, Robert Coleman, 645  
 Church, F. S., 206  
 Clark, Walter, 166  
 Clarke, Thomas Shields, 1174  
 Clay, Mary F. R., 509, 523  
 Coffin, Esther L., 994  
 Coman, Charlotte B., 685  
 Conant, Lucy S., 235  
 Connell, Edwin D., 431  
 Conner, Jerome, 1139  
 Cooper, Colin Campbell, 86, 149, 207, 647  
 Cooper, Emma Lampert, 671, 698, 705, 724  
 Cornwell, Martha Jackson, 1118, 1122, 1128, 1133  
 Couse, E. Irving, 171, 563

## INDEX.

---

- Coxe, Eliza Middleton, 125, 402  
Crane, Bruce, 439  
Craven, Laura, 178  
Cross, Sallie, 1012  
Crowell, Margaret, 419  
Curran, Charles C., 239, 527, 651  
Curtis, Constance, 524  
Curtis, Elizabeth, 100, 451, 454  
Cushing, Howard Gardiner, 89  
Dagnan-Bouveret, P. A. J., 182  
Dana, Charles E., 683, 695  
D'Ascenzo, Nicola, 538  
Davies, Arthur B., 23  
Davis, Charles H., 227, 228, 327  
Dawson, George Walter, 626, 726  
DeCamp, Joseph R., 121, 154, 430  
DeHaven, Frank, 136  
Dessar, Louis Paul, 137, 141  
Dewey, Charles Melville, 110  
Dewing, Maria Oakey, 83  
Dickson, Mary E., 250, 433  
Dillaye, Blanche, 543  
Dimock, E., 808, 809, 810, 812, 813, 818, 819, 820  
Dix, Eulabee, 971  
Dougherty, Louis R., 1176  
Dougherty, Parke C., 534  
Dougherty, Paul, 508  
Douglas, Walter, 947  
Dreyfous, Florence H., 984  
Dufner, Edward, 108, 455, 463  
Dull, John J., 657, 696, 707, 728, 730  
Dvorak, F. R., 221

INDEX.

---

- Eagan, Thomas J., 403  
Eakins, Thomas, 94, 521, 539, 580, 594  
Earhart, John F., 236  
Earle, Elinor, 441  
Eaton, Charles Warren, 111, 507, 635  
Eaton, Margaret Fernie, 712  
Emmett, Lydia Field, 996  
English, F. F., 162  
Este, Florence, 71, 72, 73, 75, 76, 77  
Fabien, Henri, 233  
Farley, Richard Blossom, 597  
Farrell, Katharine Levin, 703  
Fauley, A. C., 208  
Faulkner, Herbert W., 204  
Feely, Maurice, 729  
Fell, Maurice, 625  
Ferguson, Nancy M., 518, 531  
Ferris, Stephen J., 517, 800, 801  
Ffoulkes, G. A., 976  
Field, Hamilton Exeter, 815  
Finley, Ella, 1137  
Foster, Ben, 409, 511, 715  
Fowler, Frank, 428  
French, Daniel C., 1165  
Frieseke, Frederick Carl, 429, 542  
Fromuth, Charles H., 31, 35, 718  
Fuller, Lucia Fairchild, 962, 975  
Fuller, Margaret, 315  
Furlong, Charles Wellington, 618, 659, 663  
Fussell, Charles L., 746  
Gallagher, Sears, 604  
Gallison, H. H., 103

INDEX.

---

- Garber, Daniel, 583  
Gardner-Soper, James H., 633  
Gay, Walter, 20, 21, 24, 25, 32  
Genth, L. M., 163, 177, 561  
Gibbs, George, 653  
Gihon, Albert Dakin, 220, 321  
Glaman, Eugenie F., 122  
Goodwin, Arthur Clifton, 123, 636, 722  
Goodwin, Clara L., 562  
Gould, Mabel Saxe, 916, 917, 918  
Grafly, Charles, 1109, 1110, 1111  
Grayson, Clifford P., 680, 747  
Green, Elizabeth Shippen, 804, 823, 824, 825, 828, 830, 831,  
832, 843, 856, 857, 859  
Greene, Mary Shepard, 128  
Greene, Walter L., 58, 448  
Groll, Albert L., 138  
Gruppe, Charles P., 516, 570, 576, 677  
Haeseler, Susan Smith (deceased), 595  
Hagaman, James, 97, 467  
Hailman, Johanna Woodwell, 548  
Hale, Ellen Day, 183  
Hale, Lilian Westcott, 62, 68  
Hale, Philip L., 66, 69, 328, 572  
Hamilton, Jessie, 596  
Hamilton, John McLure, 1101  
Hamilton, W. Dean, 243  
Harding, Charlotte, 802, 826, 827, 829, 858, 861, 862  
Harrison, Alexander, 306, 308, 314, 320, 322, 422  
Harrison, Birge, 209, 212, 450, 461  
Hartley, J. Scott, 1134, 1136, 1144  
Harvey, Eli, 1130, 1173

- Hassam, Childe, 63, 65, 67, 78, 667  
Haydock, May S., 464, 465, 466  
Hazelton, Mary Brewster, 64, 571  
Heil, Charles E., 658  
Helbling, A. F., 907  
Helmick, Howard, 709, 751, 755, 814  
Henri, Robert, 88  
Herring, Elsie Thomas, 923, 924  
Herrman, Brenetta, 963  
Hildebrandt, H. L., 520  
Hill, Roswell S., 140  
Hills, Laura Coombs, 949, 950, 951, 952, 953, 954, 955, 956  
Himmelsbach, Paula B., 218, 863  
Hoerber, Arthur, 545, 546  
Holbrook, Emerline M., 609, 622  
Holme, Lucy D., 528  
Homer, Winslow, 49, 156, 606, 607, 608, 610, 611, 612, 613,  
614, 615, 616  
Hopkinson, Charles, 42, 202, 246, 510  
Horton, William S., 129  
Houston, Francis C., 38  
Howard, Clara F., 972, 990, 1010  
Howland, George, 462  
Hudson, Anna Hope, 165  
Huffington, John C., 708  
Humphreys, Albert, 537, 549  
Hunt, Helen Dunlap, 937  
Hunter, L. C., 681  
Huntington, Alonzo St. George, 426  
Ingham, Elizabeth H., 566  
Inness, Jr., George, 135, 139  
Irvine, M. Bell, 932, 936, 940

INDEX.

---

- James, Alice Archer Sewall, 173, 515  
Jamieson, Jr., Malcolm McGregor, 796, 797  
Jessup, Josephine, 998  
Josephi, Isaac A., 1013, 1014, 1015  
Kaelin, C. S., 714, 721  
Kaula, Lee Lufkin, 469  
Kelly, Lavinia Ebbinhausen, 938, 942, 943, 944  
Kendall, Margaret, 969, 1011  
Kendall, Sergeant, 1177  
Kevorkian, Mihran H., 914  
King, Paul, 1000  
Kinsella, James, 661  
Kirkham, R. W., 1004  
Kobbé, M. O., 668, 798, 811  
Koenig, Elsa, 164, 559  
Konti, Isidore, 1125, 1149, 1150  
Koronski, André, 756, 793  
Kronburg, Louis, 593  
Kummer, Frederick, 434  
Laessle, Albert, 1058  
Lambert, John, 47, 211, 222  
Lasar, Charles A., 90  
Lathrop, W. L., 440  
Lawson, Ernest, 84, 252, 253, 254, 255  
Leonard, Jr., George H., 544  
Lewis, Arthur Alen, 766, 767, 787, 789  
Lie, Jonas, 410  
Linder, Henry, 1104  
Little, John Wesley, 723  
Little, Pemberton L, 1143  
Lockwood, Wilton, 12  
Loeser, Elizabeth H., 909

## INDEX.

---

- Lopez, Charles Albert, 1115, 1117, 1169  
Loring, William Cushing, 807, 817  
Luks, George, 540  
Lungren, Fernand, 631, 679, 752, 753, 821, 822  
MacChesney, Clara T., 145  
MacEwen, Walter, 245, 737, 738, 740, 743, 744  
MacLaughlan, Donald Shaw, 565, 760, 774, 775, 790  
MacNeil, H. A., 1142, 1148  
McCord, George, 582  
McDougall, John A., 977, 978, 979, 980  
McFadden, Sarah Yocum, 906  
McKay, Pauline, 323  
McLane, M. Jean, 447, 652  
McParlin, Eleanor Beall, 915  
Macauley, Ellen, 854  
Macomber, M. L., 512  
Magee, J. C., 144, 302  
Mars, E., 742  
Mase, C. C., 706  
Masters, Frank B., 82  
Mauch, Max, 1135  
Meakin, L. H., 225  
Meeser, Lillian Burk, 533, 739  
Melchers, Gari, 105  
Mercer, H. C., 1185, 1186, 1187, 1188, 1189, 1190, 1191  
Merritt, Anna Lea, 152, 229  
Metcalf, Helene F., 666  
Meyvis, Aimé, 418  
Middleton, Mary P., 1147  
Miller, William H., 529  
Molarsky, A., 160  
Morrice, James Wilson, 52, 541



INDEX.

---

- Moser, James Henry, 629  
Mumford, Alice, 151, 435  
Murphy, Hermann Dudley, 415, 640  
Murray, Samuel, 1126, 1138, 1166, 1168, 1171, 1184, 1192,  
1193  
Myers, Jerome, 754  
Needham, Charles Austin, 43  
Nettleton, Walter, 176, 249, 503  
Newlin, Sara Julia, 901  
Newman, Carl, 326  
Nicholls, Rhoda Holmes, 605  
Niedecken, George M., 842, 864  
Niehaus, Charles Henry, 1151, 1179  
Niemeyer, John H., 70  
Nourse, Elizabeth, 150, 210, 621, 711  
Nunn, Frederick, 567, 569  
Oakley, Thornton, 841, 860  
Oakley, Violet, 844, 845, 846, 847, 848, 849, 850  
Ochtman, Leonard, 79, 406  
Of, Jr., George Ferdinand, 638  
Otis, Amy, 903, 912  
Page, Marie Danforth, 530, 564  
Palmer, Walter L., 634, 641, 686, 687, 689, 690, 691, 692,  
693, 741  
Pancoast, Jr., Henry B., 174, 179  
Parker, H. Hanley, 1127  
Paul, Jr., William H., 411  
Paxton, William M., 232, 560  
Peart, Caroline, 44, 214, 417  
Penman, Edith, 664  
Pennell, Joseph, 759, 785  
Perkins, Mary Smyth, 87, 577, 586, 587, 588, 589

- Perry, Lilla Cabot, 148, 425  
 Peterson, Lily B., 928  
 Pickett, Frederick A., 985, 992  
 Pitts, Fred L., 675  
 Platt, Alethea Hill, 644, 699  
 Plympton, D. D., 816  
 Porter, Benjamin C., 556  
 Post, May A., 311, 592, 733  
 Potthast, Edward H., 324  
 Prellwitz, Henry, 427  
 Prendergast, Maurice B., 623, 646  
 Ramsey, Charles Frederic, 532  
 Ramsey, Milne, 458  
 Ranger, H. W., 170  
 Recknagel, Jr., John H., 555  
 Redfield, Edward W., 57, 130, 414  
 Redmond, John J., 301  
 Reed, Lillian R., 242  
 Register, Emmasita, 217  
 Reynolds, Virginia, 957, 958, 959, 960, 1009  
 Rhead, Louis, 670, 750  
 Richards, E. E., 36, 536  
 Ritchie, Mary D., 590  
 Ritschel, William, 678  
 Roberts, Elizabeth Wentworth, 91, 92, 93, 95, 96, 98  
 Robins, Susan B. P., 648  
 Robinson, Will S., 180  
 Roelofs, William (deceased), 585  
 Rorke, Edward A., 13, 550  
 Ross, Isabel, 578  
 Roth, Fred G. R., 1112, 1113, 1114  
 Rowe, Clarence Herbert, 772, 778, 783, 852

## INDEX.

---

- Rowe, J. Staples, 995  
Rudy, J. Horace, 805  
Saint Gaudens, Augustus, 1163, 1170, 1180  
Salisbury, L. W., 930  
Sanders, Bertha D., 688  
Sands, Ethel, 146  
Sargent, John Singer, 10, 26, 28, 41  
Sartain, Harriet, 700  
Sartain, William, 591  
Saxton, John Gordon, 158, 226  
Sayen, H. Lyman, 1121  
Schilling, Alexander, 519  
Schmitt, Albert Felix, 438, 574  
Schmidt, Katharine M., 412  
Schofield, W. Elmer, 107, 205, 216  
Scott, E. M., 719  
Scudder, Janet, 1153  
Sears, Sarah C., 649, 650, 655, 656  
Sewell, A. Brewster, 513  
Sheafer, F. W., 758  
Sherman, Gail, 1156, 1157  
Shill, F. Hutton, 456  
Shinn, Everett, 734  
Shinn, Florence Scovel, 757, 794, 795  
Shuttleworth, Claire, 988  
Silvis, Margaret Ward, 525  
Simmons, Edward, 147  
Simmons, Freeman W., 442  
Sipple, Carl, 768  
Sloan, John, 133, 452, 535, 547, 579, 776  
Smedley, William T., 319  
Smith, Alfred E., 317

- Smith, Curtis Wager, 732  
Smith, Harry Knox, 251  
Smith, Jessie Willcox, 833, 834, 835, 836, 837, 838, 839,  
840  
Smith, Letta Crapo, 313, 404  
Snell, Florence Francis, 630  
Snell, Henry B., 50, 639, 674, 676, 704  
Snow, E. Taylor, 405  
Snow, Laura E., 413  
Sotter, George W., 46  
Spaford, Myra B., 684  
Stanton, Lucy May, 904, 934  
Sterne, Maurice H., 764, 777, 786, 788, 799  
Stevenson, Ralph T., 702  
Stickney, Lucy M., 744, 997  
Stilwell, Sarah S., 215  
Story, Julian, 59, 219, 230  
Stowell, M. Louise, 603  
Strean, Maria Judson, 632, 806, 961, 981  
Struthers, Irva, 933  
Sturgis, M. R., 642  
Sweeney, William K., 773, 779, 784  
Sykes, Annie G., 673  
Tannahill, M. H., 989, 1006  
Tanner, Henry O., 305, 325  
Tarbell, Edmund C., 30, 81, 224, 505, 599  
Taylor, Charles J., 437  
Taylor, Elizabeth V., 408, 526  
Taylor, Emily Drayton, 925  
Taylor, Margaretta Bonsall, 731  
Thaw, Florence, 557  
Thayer, Abbott H., 11, 27

- Thomas, Elizabeth H., 124  
 Thomas, Paul K. M., 581  
 Thompson, Leslie P., 213, 241  
 Thomson, Frances Louise, 965  
 Thomson, W. T., 617  
 Tiel, Ella Sheldon, 432  
 Trader, Effie Corwin, 987, 993  
 Troth, Emma, 905, 929  
 Troubetzkoy, Prince Pierre, 424  
 Tryon, Dwight W., 247  
 Turner, Helen M., 991  
 Usher, Leila, 1124, 1132  
 Valentine, Jane H., 902, 910  
 Van der Veer, Mary, 601, 619, 660  
 Van der Weyden, Harry, 39, 99  
 Van Elten, Elizabeth F. Krusman, 307  
 Van Gunten, Adele, 913  
 Van Trump, Rebecca N., 506  
 Vedder, Simon H., 584  
 Von Helmold, Adele M., 181  
 Vonnoh, Bessie Potter, 1160, 1161, 1162, 1164, 1194  
 Vonnoh, Robert W., 459  
 Walcott, H. M., 514  
 Walker, Horatio, 45  
 Walter, Christ, 443  
 Warren, Harold B., 697  
 Washburn, Cadwallader, 637  
 Watkins, May Wilson, 61  
 Watkins, Susan, 161  
 Watson, Elizabeth H., 628  
 Watson, Rhea D., 931  
 Weidner, Carl, 1001, 1007

- Weinman, Adolph A., 1116, 1119, 1120, 1131, 1140, 1178,  
1181  
Weir, Edith Dean, 908, 983  
Weir, J. Alden, 33  
Wellens, Helen Miller, 446, 460  
Wellington, F. H., 974  
Westfeldt, Patrick McLoskey, 749  
Weyl, Max, 309  
Wheeler, Janet, 40, 175  
Whistler, James A. McNeill, 1, 2, 3, 4, 5, 6  
Whitlock, Ursula, 964  
Whittemore, William J., 1016, 1017  
Wiggins, Carleton, 401, 457  
Wiles, Irving R., 74  
Willet, William, 803  
Williams, Frederick Ballard, 19, 142, 701  
Williamson, Mabel, 602  
Wilmot, Alta E., 986  
Wilson, J. Coggeshall, 598  
Wolf, Henry, 763, 769, 770, 780, 781  
Wood, Louise, 159, 600, 727  
Wood, W. Homer, 927, 935  
Woodbury, Charles H., 665, 672  
Wright, Margaret Hardon, 761  
Yandell, Enid, 1175, 1182  
Yardley, Caroline S., 939, 982  
Yeto, Genjira, 662, 716, 725  
Young, Charles Morris, 231, 234, 237, 238

# \$3500 in Prizes to Artists

---

It is our purpose to combine in Osborne Art Calendars the qualities that appeal alike to the connoisseur and the layman; Osborne Calendars must be good art and they must be popular. As each year's line is WHOLLY new, we require annually several hundred high-class original paintings and designs. These prizes are offered for the purpose of stimulating the production of the kind of picture we want.

Leading artists take satisfaction in having their work reproduced by this Company, knowing that Osborne Art Calendars annually go into millions of homes and that they exert a wide and constant influence in raising the popular appreciation of good art.

The following are only a few of the artists whose recent paintings are reproduced in 1903 Osborne calendars:

J. G. Brown, N.A.	James M. Hart, N.A.
George R. Barse, Jr., N.A.	W. Verplanck Birney, A.N.A.
Charles C. Curran, A.N.A.	Harry Roseland
Carleton Wiggins, A.N.A.	J. L. G. Ferris
Francis C. Jones, N.A.	A. F. Tait, N.A.
H. R. Poore, A.N.A.	J. H. Dolph, N.A.
Louis Moeller, N.A.	

There are five prizes of \$500 each, to be awarded by a jury of three well-known critics, and a popular prize of \$1000 to be awarded by the vote of about forty thousand calendar buyers in the United States. All satisfactory pictures or designs that do not win prizes will be purchased at a fair price.

Artists and designers may obtain full particulars upon application.

---

## The Osborne Company

277 Broadway

New York

INSURANCE

423 Walnut Street

Philadelphia

FRANCIS F. BLACK    GEORGE T. DU BOIS    WILLIAM M. EDWARDS

F. A. BLACK & SON CO.

No. 620 LOCUST STREET, PHILADELPHIA

LONG DISTANCE TELEPHONE

Painting and Decorating	✳	Contractors for all kinds
OF		of house repairs
Houses, Churches, Public	✳	—
Halls and Buildings	✳	Plate Glass furnished and set
OF EVERY DESCRIPTION	✳	PAPER HANGING

P h o t o g r a p h s

from which the half-tone illustrations  
in this Catalogue were made, are the work of

W. N. JENNINGS

1305 Arch Street ✳ Philadelphia

G. W. EDMONDS & CO.    G. W. EDMONDS  
R. Y. WARNER

ANTHRACITE and  
BITUMINOUS

COAL

*Yards:*

1920-40 North Ninth Street  
Tasker Street Wharf  
Ridge Avenue and Noble Street  
TELEPHONE

*Main Office:*

1920 N. NINTH STREET  
PHILADELPHIA





Neither spoke, but the coldness between them was rapidly disappearing

**CRANE'S ICE CREAM  
CAKES AND PASTRY**  
... Shipped to All Points ...

Bell Phones: 1-34-25, 1-39-65, 1-39-66.  
Keystone Phone: 695 Race.

CRANE'S, Eighteenth and Filbert Streets, Philadelphia.

Special Attention given to Wedding Cakes; also Lowest Estimates for Finest Catering furnished. All our goods are guaranteed. Send for new Booklet of Nuts to Crack.

*Art Galleries*

OF

**EDWARD BRANDUS**

**391 FIFTH AVENUE**  
Between 36th and 37th Sts.  
**NEW YORK**

**RUE DE LA PAIX**  
**16**  
**PARIS**

**EXHIBITION OF PAINTINGS**

BY THE

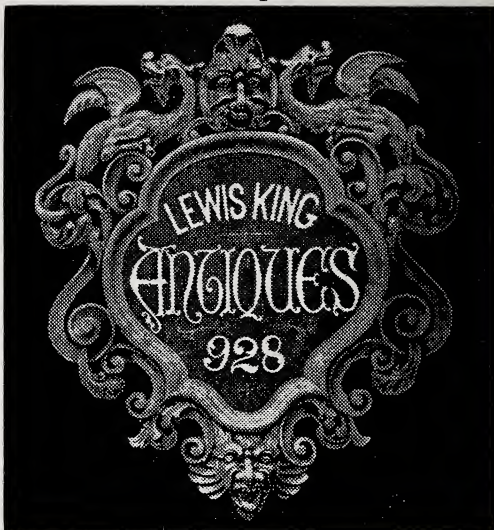
Leading Masters of the French Schools

AND

**ANCIENT PORTRAITS**

By the Old Masters of the Early French, English and Dutch Schools

LEWIS KING :: *Antiques* :: ART FURNITURE  
TO ORDER



928 PINE STREET, PHILADELPHIA

---

THE SPECIALTY WOODWORKING CO.

1456 Cherry Street, Philadelphia

MANUFACTURERS OF

ARTISTS' WOODENWARE

Studio Easels, Sketching Easels, Palettes, Paint Boxes,  
Stretcher Frames, Drawing Boards, Picture Frames,  
Pyrography Articles. Improved Designs, Cheap Prices.

110

# F. WEBER & CO.

Manufacturers and Importers of

## ARTISTS' MATERIALS

F. W. & Co.'s Superfine Artists' Oil Colors.

F. W. & Co.'s Canvas and Academy Boards.

F. W. & Co.'s Moist Water Colors,  
in Pans, Tubes, and Glass Pots.

F. W. & Co.'s Soft and Half Hard Pastels,  
Pastel Paper, Pastel Canvas, and Boards.

Pyrography Outfits and Materials.

WORKS ON ART FOR ALL BRANCHES

IMPORTERS OF

Winsor & Newton's Oil and Water Colors.

Lacroix's and Müller & Hennig's China Colors.

Mathematical Instruments and Draughtsmen's  
Materials in large variety.

**1125 Chestnut Street, Philadelphia, Pa.**

*Branch Houses:*

709 Locust St., St. Louis, Mo. 5 N. Charles St., Baltimore, Md.

If the coffee you have been using  
does not exactly suit you, why not  
try our

## JAVA BLEND?

Customers tell us it is more delicious  
than any they have ever tasted.

**SHOWELL & FRYER. Ltd.**

**Dependable Grocers**

**Juniper and Market Streets**

**Philadelphia**

Send for Priced

Catalogue

Just out

# Window Decorations



THIS IS THE SEASON WHEN A  
FEW BRIGHT FLOWERS ARE  
WANTED FOR THE WINDOW

**CHOICE AZALEAS**

white, pink, or variegated

**PRIMROSES**

all colors

**LILIES**

**DAFFODILS**

**CINERARIAS**

AND OTHER BLOOMING  
PLANTS WE OFFER IN GREAT  
VARIETY. PRICES RANGE  
FROM TWENTY-FIVE CENTS FOR  
A PRIMROSE, WITH A CREPE  
PAPER COVER, UPWARDS



**J O S . K I F T & S O N**

**1725 CHESTNUT STREET**

**P H I L A D E L P H I A**

---

PRINTED BY J. B. LIPPINCOTT COMPANY, PHILADELPHIA