

DECLASSIFIED

Authority NND 975029

~~SECRET~~

SECURITY INFORMATION

319.1

Tri-monthly Bulk Fuel  
Report -  
Binder #1

1 Jan 49 - 31 Dec 50

G-4 Adm File

SECURITY INFORMATION

SECRET

GENERAL HEADQUARTERS, FAR EAST COMMAND  
ADJUTANT GENERAL'S OFFICE  
RADIO AND CABLE CENTER

# INCOMING MESSAGE

*RESTRICTED*  
ROUTINE

G-4 ROUTING	
AC/SG4	
DAC/SG4	
EXECUTIVE	<i>[initials]</i>
TO	
C+RE	
SUPPLY	
25 Dec 50	PROLEUM <i>[initials]</i>
KEA	
ADMIN	<i>[initials]</i>

FROM : COMSERVSQDN 3  
 TO : CINCFE (APO) TOKYO JAPAN  
 INFO : COMNAVFE (SAFOJ) TOKYO JAPAN, CG RYCOM (SAPOR) OKINAWA  
 NR : 241236 Z

*31914*  
 Tri-monthly Bulk Fuel Report for pd 15 thru 24 Dec. Read in 3 columns:

115/145 avgas	Diesel	NSFO
Opening inventory: 103	85	355
Receipts: 24.777 from SAFOJ	0	277.727 from SAFOJ
Issues: 20.4	2.5	270
Closing inventory: 107	83	363
Estimated consumption next 30 days: 78	20	850

NO SIG

INFORMATION : *G-4*

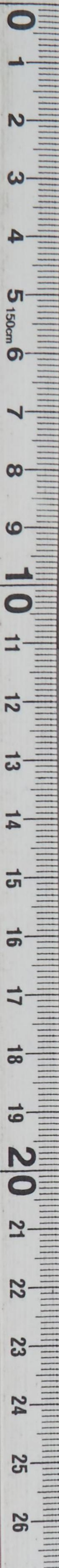
14011

*RESTRICTED*  
ROUTINE

TOO : 241236 Z  
MCN : 54153

Paraphrase not required. Handle as correspondence of classification carried hereon per paragraphs 17a(1)(2) and 41c(2)(3) and g(1), AR 380-5, 15 November 1949.

COPY No.



INCOMING MESSAGE

BHD/111

RESTRICTED  
ROUTINE

25 Dec 50

FROM : COMSERVSDN 3

TO : CINCPAC (APO) TOKYO JAPAN

INFO : COMNAVPAC (SAFOJ) TOKYO JAPAN, CG RYCOM (SAFOR) OKINAWA

NR : 241536 Z

Tri-monthly Bulk Fuel Report for pd 15 thru 24 Dec. Recd  
in 3 columns:

15/15 avgas	Diesel	NSRO
Opening inventory: 103	85	355
Receipts: 24,777 from SAFOJ	0	277,787 from SAFOJ
Issues: 20.4	2.2	270
Closing inventory: 107	83	363
Estimated consumption next 30 days: 78	20	850

NO SIG

INFORMATION : 0-4

RECEIVED  
25 DEC  
G-1  
GHO  
241536 Z

RESTRICTED  
ROUTINE

14011

GENERAL HEADQUARTERS, FAR EAST COMMAND  
ADJUTANT GENERAL'S OFFICE  
RADIO AND CABLE CENTER

G-4 ROUTING	
AC/SG-1	
DAC/SG-4	
EXECUTIVE	
PTO	<input checked="" type="checkbox"/>
C+RE	
SUPPLY	
EFF/smt	<input checked="" type="checkbox"/>
KEA	
ADMIN	<i>Hm</i>
15 Dec 50	

# INCOMING MESSAGE

*319.1  
Tri*

*Restricted*  
ROUTINE

FROM : COMSERV SQ 3  
 TO : CINCFE (SAPOJ) TOKYO JAPAN  
 INFO : COMNAVFE (AREA PETO) TOKYO JAPAN, CG RYCOM (SAPOR)  
 OKINAWA  
 NR : 140840 Z

Tri-monthly bulk fuel report for period 5 through 14 Dec.  
 Read in 3 columns.  
 1: 115 145  
 2: AVGAS  
 3: Diesel NSFO  
 Opening inventory 104 86 323  
 Receipts 20.153 from SAPOJ 0 313.784 from SAPOJ  
 Issues 20.8 .9 29 282  
 Closing inventory 103 85 355  
 Estimated consumption next 30 days. 78 20 850.

NO SIG

INFORMATION : G-4, FEAF

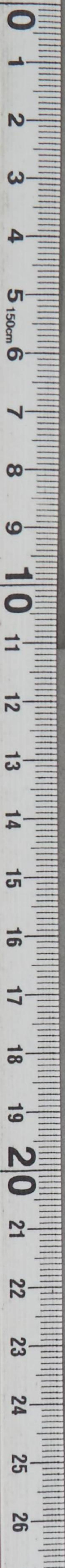
07120

ROUTINE  
*Restricted*

TOO : 140840 Z  
MCN : 51725

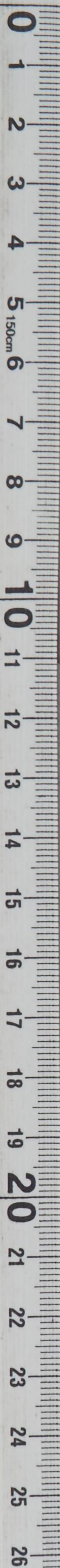
Paraphrase not required. Handle as correspondence of classification carried hereon per paragraphs 17a(1)(2) and 41c(2)(3) and g(1), AR 380-5, 15 November 1949.

COPY No.



DECLASSIFIED

Authority NND 975029



GENERAL HEADQUARTERS, FAR EAST COM AND  
ADJUTANT GENERAL'S OFFICE  
RADIO AND CABLE CENTER

*319.1  
Tri*

**INCOMING MESSAGE**

*Restricted*  
ROUTINE

G-4 ROUTING	
AC/S G-4	
DA G/S G-4	
EXECUTIVE	
FFP/WS + O	<input checked="" type="checkbox"/>
C + RE	
SUPPLY	<input checked="" type="checkbox"/>
PETROLEUM	<input checked="" type="checkbox"/>
NSA	
ADMIN	<i>ES</i>

5 Dec 50

FROM : COMSERRON 3  
 TO : CINCFE (APO) TOKYO JAPAN  
 INFO : CG RYCOM OKINAWA  
 NR : 041416 Z

Tri Monthly Bulk Fuel Report for pd 25 Nov through 4 Dec.  
Read in 3 columns.

115/145 avgas	diesel	NSFO
Opening inventory:		
99	66	279
Receipts:		
19.2 from Guadalupe,		
5.593 from SAPOJ,		
16.1 from Guadalupe,		
19.525 from SAPOJ,		
60 from Guadalupe,		
210.679 from SAPOJ.		
Issues:		
5.4 to Navy,		
14.7 to SAPOJ,		
8 to Navy,		
8.3 to SAPOJ,		
196 to Navy,		
31 to SAPOJ.		
Closing inv:		
104	86	323
Estimated consumption next 30 days.		
70	20	700.

NO SIG

INFORMATION : G-4

99840

ROUTINE

*Restricted*

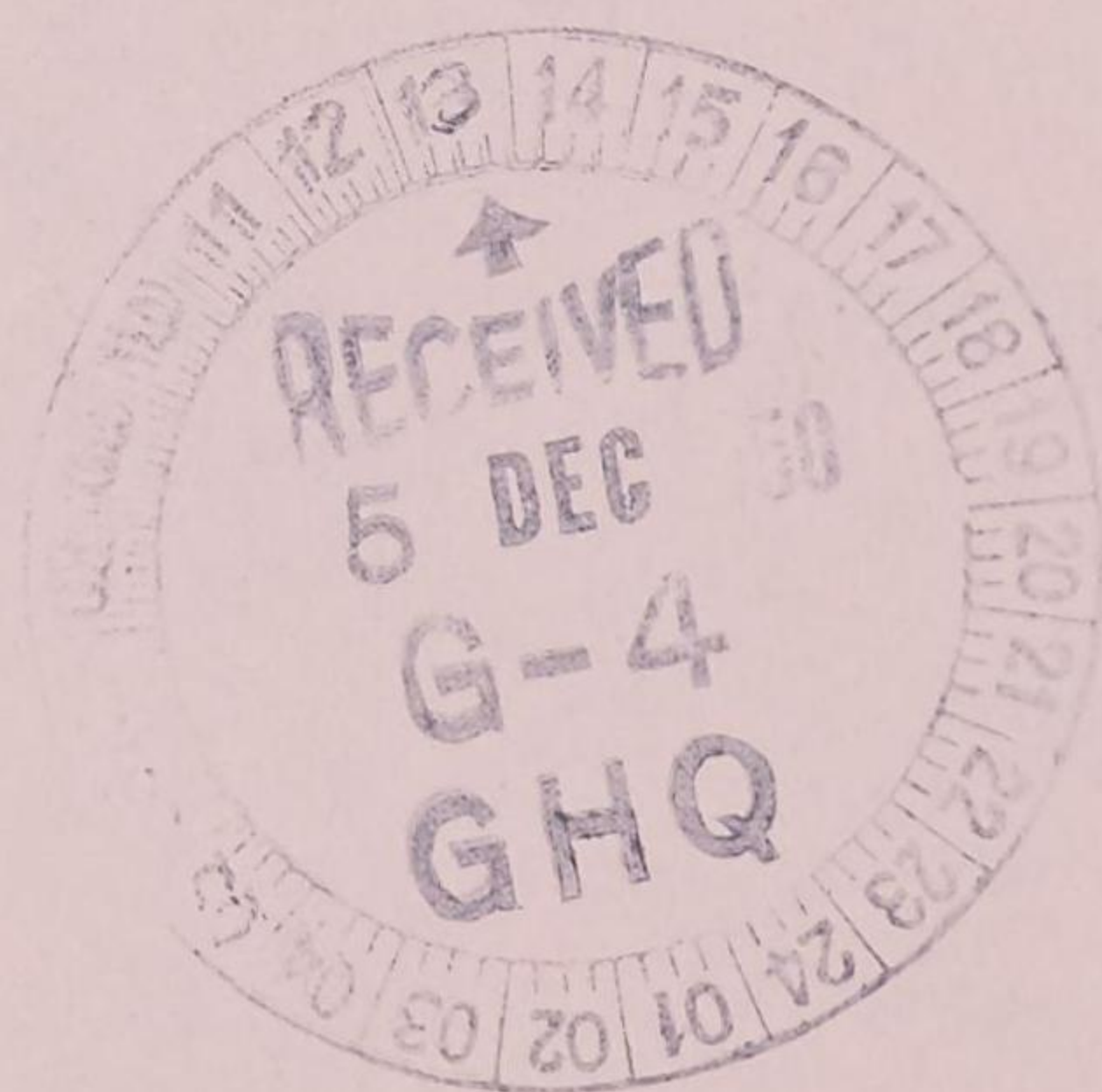
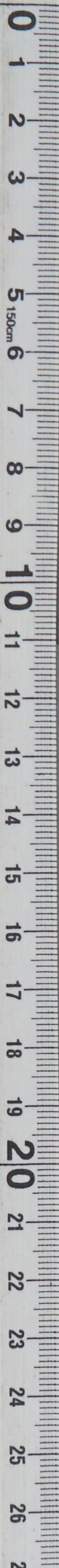
TOO : 041416 Z  
MCN : 99221

Paraphrase not required. Handle as correspondence of classification carried hereon per paragraphs 17a(1)(2) and 41c(2)(3) and g(1), AR 380-5, 15 November 1949.

COPY No.

DECLASSIFIED

Authority NND 975029



Faint, illegible text at the bottom of the page, possibly bleed-through from the reverse side.

GENERAL HEADQUARTERS, FAR EAST COMMAND  
ADJUTANT GENERAL'S OFFICE  
RADIO AND CABLE CENTER

# INCOMING MESSAGE

*3/19/1  
Tri*

*Restricted*  
ROUTINE

G-4 ROUTING	
AC/S G.4	
AC/S G.4	
EXECUTIVE	
FO	
CRE	
SUPPLY	
PETROLEUM	<input checked="" type="checkbox"/>
SEA	
ADMIN	<i>LC</i>

WG/elh  
1 Dec 50

FROM : COM SVC SQ 3  
 TO : CINCFC (APO) TOKYO JAPAN, CG JLCOM (SAPOJ) YOKOHAMA JAPAN,  
 CG RYCOM (SAPOR) OKINAWA  
 NR : 301128 Z

Rqst modify my 240540 Z Nov as follows.  
 Estimated consumptions next 30 days 70, 20, 700.  
 NO SIG

INFORMATION : G-4

*Monthly Bulk Fuel Report for period 15 through  
24 Mar.*

96929

ROUTINE  
*Restricted*

TOO : 301128 Z  
MCN : 98119

Paraphrase not required. Handle as correspondence of classification carried hereon per paragraphs 17a(1)(2) and 41c(2)(3) and g(1), AR 380-5, 15 November 1949.



DECLASSIFIED  
Authority NND 975029

0  
1  
2  
3  
4  
5  
6  
7  
8  
9  
10  
11  
12  
13  
14  
15  
16  
17  
18  
19  
20  
21  
22  
23  
24  
25  
26

RECEIVED  
COMMUNICATIONS SECTION  
NAVY DEPARTMENT

INCOMING MESSAGE

RECEIVED  
7 DEC 1950  
G-4  
GHO

GENERAL HEADQUARTERS, FAR EAST COM AND  
ADJUTANT GENERAL'S OFFICE  
RADIO AND CABLE CENTER

G-4 ROUTING	
A C/S G-4	
DAF/SG-4	
EXECUTIVE	
P+O	<input checked="" type="checkbox"/>
C+RE	
SUPPLY	
PETROLEUM	<input checked="" type="checkbox"/>

25 Nov 50  
*ES*

# INCOMING MESSAGE

*Restricted*  
ROUTINE

WG/nbw

FROM : COMSERV SQ 3  
 TO : CINCPAC (APO) TOKYO JAPAN,  
 INFO : CG JLCOM (SAPOJ) YOKOHAMA JAPAN, CG RYCOM (SAPOR) OKINAWA  
 NR : 240540 Z *319.1*

Trimonthly Bulk Fuel Report for period 15 through 24 Nov. Read in 3 columns.

1. 115-145 avgas
2. diesel
3. NSFO

Opening inventory 9873353.  
 Receipts 16 from Kishwaukor 0132.115 from SAPOJ,  
 Issue 15.57.1206.  
 Closing inventory 9966279.  
 Estimated consumption next 30 days 4820600.

NO SIG

INFORMATION : G-4

NOTE : Sig Comm Center states this msg delayed due to svc.

92987

ROUTINE

TOO : 240540 Z  
MCN : 96561

*Restricted*

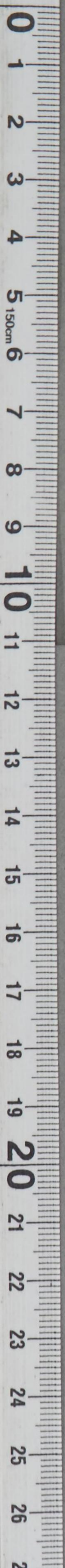


Paraphrase not required. Handle as correspondence of classification carried hereon per paragraphs 17a(1)(2) and 41c(2)(3) and g(1), AR 380-5, 15 November 1949.

COPY No.

DECLASSIFIED

Authority NND 975029



GENERAL HEADQUARTERS, FAR EAST COMMAND  
 ADJUTANT GENERAL'S OFFICE  
 RADIO AND CABLE CENTER

**INCOMING MESSAGE**

*Restricted*  
 ROUTINE

G-4 ROUTING	
A C/S G-1	
DA C/S G-4	
EXECUTIVE	
P+O	<input checked="" type="checkbox"/>
C+RE	
SUPPLY	<input checked="" type="checkbox"/>
PETROLEUM	<input checked="" type="checkbox"/>
KEA	
ADMIN	

14 Nov 50

FROM : COMSERVRON 3 (AT SEA)  
 TO : CINCPAC (SAPOJ) TOKYO JAPAN  
 INFO : CG RYCOM (AREA PET OFFICE) (SAPOR) OKINAWA  
 NR : 140212 Z

Tri Monthly Bulk Fuel Report for period 5 through 14 Nov.

Read in 3 columns.

115/145 avgs	Diesel	NSFO
Opening inventory:		
88	62	376
Receipts:		
18.868 from SAPOJ	17.411 from SAPOJ	125.59 from SAPOJ
Issues:		
8.5	6.8	149
Closing inventory:		
98	73	353
Estimated consumption next 30 days		
70	20	600

NO SIG

INFORMATION : G-4, FEAF, COMNAVFE

NOTE : This msg passed by AG Rad Br via Courier to CG JLCOM (SAPOJ) YOKOHAMA JAPAN for info.

84687

ROUTINE

TOO : 140212 Z  
 MCN : 93998

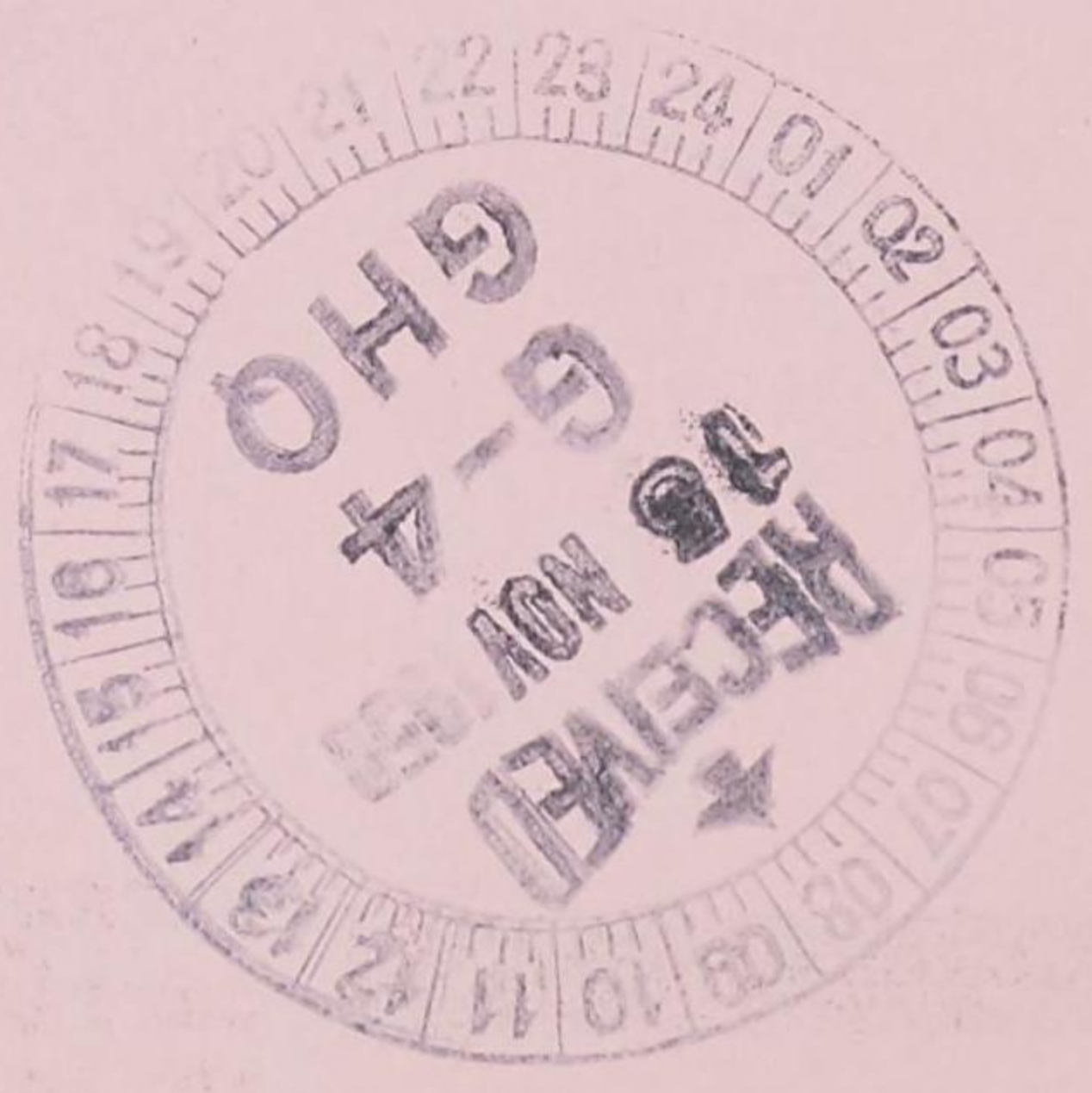
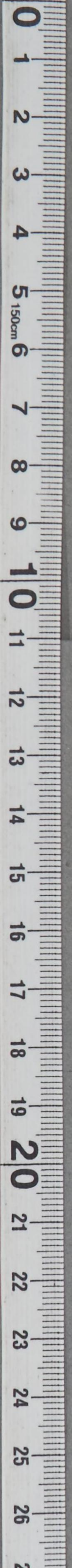
*Restricted*

Paraphrase not required. Handle as correspondence of classification carried hereon per paragraphs 17a(1)(2) and 4lc(2)(3) and g(1), AR 380-5, 15 November 1949.

COPY No.

DECLASSIFIED

Authority NND 975029



GENERAL HEADQUARTERS, FAR EAST COMMAND  
ADJUTANT GENERAL'S OFFICE  
RADIO AND CABLE CENTER

G-4 ROUTING	
ACSG-4	
AC/S G-4	
EXECUTIVE	
INFO	
C+RE	
SUPPLY	
PETROLEUM	
KEA	
ADMIN	<i>WOP</i>

# INCOMING MESSAGE

*Restricted*  
PRIORITY

EFF/bgn  
*9*

4 Nov 50

FROM : CG MARBO GUAM  
TO : CINCPAC (APO) TOKYO JAPAN  
INFO : CG RYCOM OKINAWA  
NR : 040452 Z *319.1*

Tri-Monthly Bulk Fuel Report for pd 24 Oct through 4 Nov.  
Read in 3 columns.

115/145 Avgas	Diesel	NSFO
Opening Inventory 92	86	395
Receipts 5,777 from SAPOJ	Z 190,365 from SAPOJ	
Issues 9.7	11.4 to Navy	209
	12.7 Trans to Navy	
Closing Inventory 88	62	376
Estimated consumption next 30 days	40, 20, 600.	

NO SIG

INFORMATION : G-4, COMNAVFE

NOTE : This msg passed by AG Rad Br via courier to CG JLCOM and SAPOJ APO for action.

78131

PRIORITY  
*Restricted*

TOO : 040452 Z  
FCN : 91767

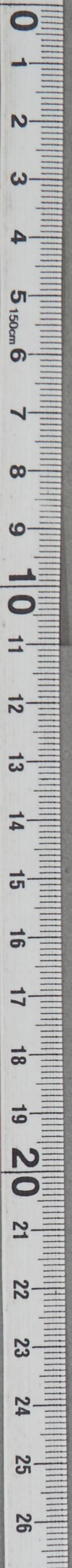
CONSULT CRYPTO CENTER BEFORE DECLASSIFYING

Paraphrase not required. Handle as correspondence of classification carried hereon per paragraphs 17a(1)(2) and 41c(2)(3) and g(1), AR 380-5, 15 November 1949.

COPY No.

DECLASSIFIED

Authority NND 975029



INCOMING MESSAGE

REP: JPN

*Priority*  
PRIORITY

# Nov 20

FROM : CG AIRBO BUN

TO : CINCPAC (INFO) TOKYO JAPAN

INFO : CG INTCOM OKINAWA

NR : 040423 Z

The monthly Bulk Fuel Report for pd 24 Oct through 4 Nov.

Read in 3 columns.

115/45 Avons

Operating Inventory 22

Receipts 2,777 from SAPOL

Issues 917

Closing Inventory 88

Estimated consumption next 30 days 40, 20, 600.

NSPO  
395

Classel  
88

2,190.365 from SAPOL

509

11.4 to Navy

12.7 Trans to Navy

376

NO SIG

INFORMATION : 0-4, COMNAVY

NOTE : This message is to be handled as a courier to CG JICOM and  
SAPOL.



TOO : 040423 Z  
FROM : 91361

PRIORITY

*Priority*

GENERAL HEADQUARTERS, FAR EAST COMMAND  
 ADJUTANT GENERAL'S OFFICE  
 RADIO AND CABLE CENTER

G-4 ROUTING	
A C/S G-4	
DAC/S G-4	
EXECUTIVE	<i>[initials]</i>
P+O	
C+RE	
SUPPLY	
PETROLEUM	<input checked="" type="checkbox"/>
KEA	
ADMIN	<i>[signature]</i>

# INCOMING MESSAGE

*Restricted*  
 PRIORITY

JA/318

25 Oct 50

FROM : COMSERVRON 3  
 TO : CINCPAC (SAPOJ) TOKYO JAPAN  
 INFO : CG RYCOM (AREA PET OFFICE AND SAPOJ) OKINAWA  
 NR : 240632 Z *319.1*

Trimonthly Bulk Fuel Report for period 14 thru 24 Oct.  
 Read in 3 columns.

	115/141	avgas diesel	NSFO
Opening inventory	83	81	393
Receipts	10.2 fr SAPOJ	18 fr Ashtabula	18 from Ashtabula
	242.428 fr SAPOJ	11.658 fr SAPOJ	67 from Ashtabula
Issues	19.6	2.1 to Navy	10.5 to SAPOJ
Closing inventory	299		
Estimated consumption next 30 days	92	86	395
	43	10	350

NO SIG

INFORMATION : G-4, FEAF, COMNAVFE

NOTE : Sig Comm Ctr states this msg delayed due to service.

70429

PRIORITY  
*Restricted*

TOO : 240632 Z  
 MCN : 89112

Inclosure No. 1

Paraphrase not required. Handle as correspondence of classification carried hereon per paragraphs 17a(1)(2) and 41c(2)(3) and g(1), AR 380-5, 15 November 1949.

COPY No.



DECLASSIFIED  
Authority NND 975029

0  
1  
2  
3  
4  
5  
6  
7  
8  
9  
10  
11  
12  
13  
14  
15  
16  
17  
18  
19  
20  
21  
22  
23  
24  
25  
26



GENERAL HEADQUARTERS, FAR EAST COMMAND  
ADJUTANT GENERAL'S OFFICE  
RADIO AND CABLE CENTER

G-4 ROUTING	
AC/S G-4	
DAC/S G-4	<i>M</i>
EXECUTIVE	<i>M</i>
P+O	
C+RE	
SUPPLY	
PETROLEUM	<input checked="" type="checkbox"/>
KEA	
ADMIN	<i>ES</i>

# INCOMING MESSAGE

WG/clh

*Restricted*  
ROUTINE

16 Oct 50

FROM : COMSERV SQ 3

TO : CINCFE (APO) TOKYO JAPAN, CG JLCOM (SAPOJ) YOKOHAMA  
JAPAN, CG RYCOM (SAPOR) OKINAWA

NR : 150028 Z

Tri Monthly Bulk Fuel Report for period 5 Oct through 14 Oct.  
Read in 3 columns.

	115/145	Avgas diesel	NSFO
Opening inventory.	93.	68	324
Receipts	9.886	17.8 fr Kaskaskia	16.5 fr Kaskaskia
	66.86 fr SAPOJ	2.449 SAPOR	65 fr Kaskaskia
Issues	27.616 to SAPOJ	11.6 to Navy	3.4
	85		
Closing inventory	32	81	373
Estimated consumption next 30 days.	96.	10	700

NO SIG

INFORMATION : G-4, FEAF

NOTE : This msg passed by AG Rad Br via Courier to CG JLCOM (attn SAPOJ) for action.

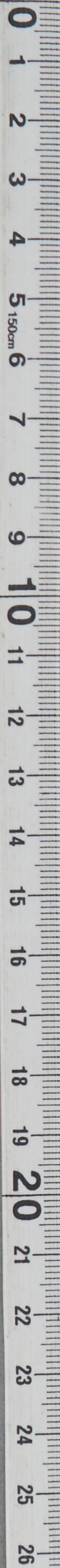
NOTE : This msg passed to Comm Center for electrical transmission to CG RYCOM (SAPOR) for info.

64263

ROUTINE

TOO : 150028 Z  
MCN : 86713

*Restricted*



INCOMING MESSAGE

W/oh

ROUTINE

16 Oct 50

FROM : COMNAV 203

TO : CINCPAC (INFO) TOKYO JAPAN (INFO) YOKOHAMA  
JAPAN, CG RYCOM (INFO) OYAMA

NR : 150028 Z

The Monthly Fuel Trial Report for period 5 Oct through 14 Oct.  
Read in 3 columns.

Receipts	Operating Inventory	Issues	Closing Inventory	Furnished consumption next 30 days
2,836	25	27,616 to SAVOR	32	80
17.8 to Kankaike 16.5 to	11.8 to SAVOR	11.6 to Navy	81	10
3.4	3.4		373	100

NO SIG

INFORMATION : 3-A TEAM

NOTE : This msg passed by AS-302 to the Comnav for CG JICOM (after SAVOR) for action.

NOTE : This msg passed to Comnav Center for electrical transmission to CG RYCOM (SAVOR) for info.

TOO : 150028 Z  
COM : 8073

ROUTINE



GENERAL HEADQUARTERS, FAR EAST COMMAND  
ADJUTANT GENERAL'S OFFICE  
RADIO AND CABLE CENTER

INCOMING MESSAGE

*Restricted*

ROUTINE

G-4	
A C/S	
DAC'S	
EXECUTIVE	
P/O	
C+RE	
SUPPLY	
PETROLEUM	<input checked="" type="checkbox"/>
K.E.A.	
ADMIN	

WG/bgc

6 Oct 50

*3191  
T/A1*

FROM : COMSERVRON 3  
TO : CINCPAC (APO), CG JLCOM (SAPOJ),  
NR : 050034 Z

Tri Monthly Bulk Fuel Report 25 Sep through 4 Oct. Reading 3 columns.

	115/145	Av Gas Diesel	NSFO
Opening Inventory	107	77	1357
Receipts	6.059 SAPOJ	none	146.997 SAPOJ 16.154 HMS Wave Prince
Issues	21	9	196
Closed Inventory	93	68	324
Estimated consumption next 30 days.	90	10	700

NO SIG

INFORMATION : G-4, FEAF, COMNAVFE

57852

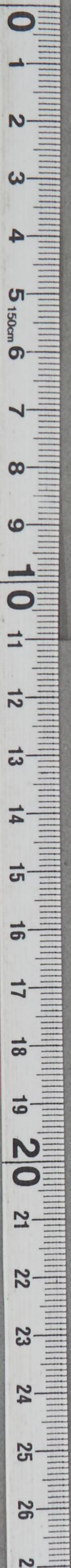
ROUTINE

TOO : 050034 Z  
MCN : 84165

*Restricted*

Paraphrase not required. Handle as correspondence of classification carried hereon per paragraphs 17a(1)(2) and 41c(2)(3) and g(1), AR 380-5, 15 November 1949.

COPY No.



GENERAL HEADQUARTERS FAR EAST COMMAND  
ADJUTANT GENERAL'S OFFICE  
PROBING AND SIGNAL SERVICE

# INCOMING MESSAGE

*[Handwritten signature]*  
ROUTINE

TO : CINCOPAC (APO) (OR FROM 434001)  
FROM : 434001  
SUBJECT: [Illegible]  
[Illegible text follows, including routing information and message content.]

TO : 434001  
FROM : 434001

*[Handwritten signature]*  
ROUTINE



[Illegible text at the bottom of the page, possibly a footer or additional routing information.]

GENERAL HEADQUARTERS, FAR EAST COMMAND  
ADJUTANT GENERAL'S OFFICE  
RADIO AND CABLE CENTER

G-4 ROUTING	
A C/S G-4	<input type="checkbox"/>
DA C/S G-4	<input type="checkbox"/>
EXECUTIVE	<input checked="" type="checkbox"/>
PTO	<input checked="" type="checkbox"/>
C+RE	<input type="checkbox"/>
SUPPLY	<input checked="" type="checkbox"/>
PETROLEUM	<input checked="" type="checkbox"/>
ADMIN	<input checked="" type="checkbox"/>

# INCOMING MESSAGE

*Restricted*

JA/mjb

ROUTINE

25 Sep 50

FROM : COMSUC SQ 3  
 TO : : CINCPAC (SAPOJ)  
 INFO : CG RYCOM (AREA PET OFFICE ANS SAPOJ)  
 NR : 241420 Z

319.1  
TAT

Tri monthly bulk fuel report for period 15 through 24 Sept. Read in 3 columns. 115/145 Avgas Diesel NSF opening inventory 9360320. Receipts 21.351 from SAPOJ 18 from M'spillion. 18 from M'spillion. 216.558 from SAPOJ 66 from M'spillion. Issues 25 Y. 246 closing inventory. 10777357. Estimated consumption next 30 days. 905700.

NO SIG

INFORMATION : G-4

49882

ROUTINE

TOO : 241420 Z  
MCN : 81099

*Restricted*

Paraphrase not required. Handle as correspondence of classification carried hereon per paragraphs 17a(1)(2) and 41c(2)(3) and g(1), AR 380-5, 15 November 1949.

COPY No.



GENERAL HEADQUARTERS, FAR EAST COMMAND  
ADJUTANT GENERAL'S OFFICE  
RADIO AND CABLE CENTER

**INCOMING MESSAGE**

G-4 ROUTING	
A C S G-4	_____
DA C S G-4	_____
EXECUTIVE	_____
P + O	_____
C + RE	_____
SUPPLY	_____
WAR/COM	<i>H. E. D. H.</i>
ADMIN	<i>W. P.</i>

*[Signature]*  
ROUTINE

15 Sep 50

FROM : COM SVC SQ 3  
 TO : CINCPAC (SAPOJ) (APO) (SAPOR)  
 INFO : CG RYCON  
 NR : 150546 Z

*319.1  
TR 1*

Tri Monthly bulk Fuel Report for period 4 through 146.  
Read in 3 colms.

115/145 avgas diesel NS F.		
Opening inventory.	Receipts	Closing inventory
89	22.423 fr SAPOJ	93
50	11.017 fr SAPOJ	60
328	191.050 fr SAPOJ	320
	Issue 99, 1, 198	
Estimated consumption next 30 days. 70.		<u>6450.</u>

NO SIG

INFORMATION : G-3, G-4, SIGNAL, FRAP, COMNAVFE

43683

*[Signature]*  
ROUTINE

TOO : 150546 Z  
MCN : 78736

CONSULT CRYPTO CENTER BEFORE DECLASSIFYING

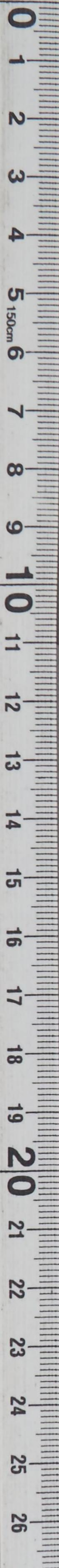
Paraphrase not required. Handle as correspondence of classification carried hereon per paragraphs 17a(1)(2) and 41c(2)(3) and g(1), AR 380-5, 15 November 1949.

COPY No.



DECLASSIFIED

Authority NND 975029



*[Faint, illegible text and markings, possibly bleed-through from the reverse side of the page.]*



GENERAL HEADQUARTERS, FAR EAST COMMAND  
ADJUTANT GENERAL'S OFFICE  
RADIO AND CABLE CENTER

G-1 ROUTING	
A C S G-4	<input type="checkbox"/>
EXECUTIVE	<input checked="" type="checkbox"/>
P+O	<input type="checkbox"/>
EFF/abn	<input type="checkbox"/>
SUPPLY	<input type="checkbox"/>
PETROLEUM	<input checked="" type="checkbox"/>
ADW	<input type="checkbox"/>
25 Sept 50	
K	

# INCOMING MESSAGE

*Restricted*  
ROUTINE

FROM : CG COM SERV SQ 3  
TO : CINCPAC  
INFO : CG RYCOM (SAPOR)  
NR : 042350 Z

319.1  
TRI

Tri Monthly Bulk Fuel Report for period 24 Aug through 4 Sept. Read in 3 columns. 115/145 avgas diesel NSFO.

Opening Inventory	Receipts	Closing Inventory
50	19.942	8950
35	fr SAPOR 5.449	328
247	fr SAPOJ 17.7	
	fr CALIENTE AO 53	
	17.6	
	fr CALIENTE	
	56.093	
	fr SAPOR 47.688	
	fr SAPOJ 66	
	fr CALIENTE	
	Issues	
	4	
	288	

Estimated consumption next 30 days. 30. 6. 295.

INFORMATION : G-4, FEAF, COMNAVFE

NOTE : This msg passed by AG Rad Br via Courier to CG JLCOM (Attn SAPOJ) for info.

37143

ROUTINE

TOC : 042350 Z  
MCN : 75927

*Restricted*

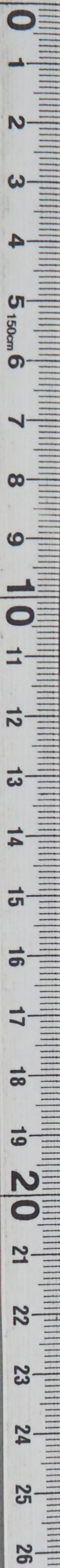
CONSULT CRYPTO CENTER BEFORE DECLASSIFYING

Paraphrase not required. Handle as correspondence of classification carried hereon per paragraphs 17a(1)(2) and 4lc(2)(3) and g(1), AR 380-5, 15 November 1949.

COPY No.

DECLASSIFIED

Authority NND 975029



GENERAL HEADQUARTERS, FAR EAST COM AND  
ADJUTANT GENERAL'S OFFICE  
RADIO AND CABLE CENTER

G-4 ROUTING	
A C/S G-4	_____
DA C/S G-4	_____
EXECUTIVE	_____
P+O	_____
C+RE	_____
SUPPLY	_____
PETROLEUM	_____ ✓
ADMIN	_____ ✓

# INCOMING MESSAGE

*31911  
TR*

*RESTRICTED*  
ROUTINE

WG/elh

24 Aug 50

FROM : ADMIN OFF CONSERV SQD 3  
 TO : CINCFE (SAPOJ) (INFO AREA PET OFF AND SAPOR)  
 INFO : CG RYCOM  
 NR : 240530 Z

Tri-monthly Bulk Fuel Report for period 15 through 24 Aug.  
Read in 3 Colms.

Opening inventory	Receipts	Closing inventory
48	10.433 fr SAPOJ	50
30	4.871 fr SAPOJ	35
200	36.915 fr SAPOJ	247
	83.792 fr SAPOR	
Estimated consumption next 30 days.		30. 10. 295.

NO SIG

INFORMATION : C-4

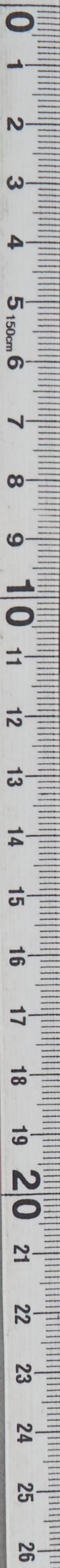
30307

ROUTINE  
*RESTRICTED*  
 TOO : 240530 Z  
 MCN : 73304

CONSULT CRYPTO CENTER BEFORE DECLASSIFYING

Paraphrase not required. Handle as correspondence of classification carried hereon per paragraphs 17a(1)(2) and 41c(2)(3) and g(1), AR 380-5, 15 November 1949.

COPY No.



*[Faint, illegible text, possibly bleed-through from the reverse side of the page]*

*[Faint, illegible text]*

*[Faint, illegible text]*

RECEIVED  
25 AUG 1950  
G-4  
GH Q

GENERAL HEADQUARTERS, FAR EAST COMMAND  
ADJUTANT GENERAL'S OFFICE  
RADIO AND CABLE CENTER

# INCOMING MESSAGE

*Restricted*

ROUTINE

G-4 ROUTING	
A C/S G-4	
D AC/S G-4	
EXECUTIVE	
EFV/WV	
OPERATIONS	
CONST & FAC	
SUPPLY	
PETROLEUM	50
ADMINISTRATION	

FROM : COMSERVRON 3  
 TO : CINCPAC (SAPOJ)  
 INFO : CG RYCOM (APO) (SAPOR)  
 NR : 140204 Z

*319!  
True*

Trimonthly Bulk Fuel Report 5 thru 14 Aug. Read in 3 cols. 115/145 avgas diesel NSFO.

Opening Inventory	Receipts	Closing Inventory
45	None	48
32	None	30
193	45.447	200
	fr SAPOR 21.945	
	fr SAPOJ 160.260	
Estimated consumption next 30 days.		30. 10. 295.

NO SIG

INFORMATION : G-4, MEAF

24283

ROUTINE

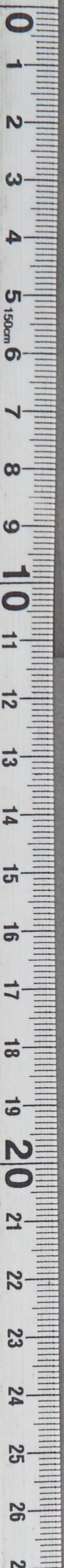
TOO : 140204 Z  
MCN : 71049

*Restricted*  
CONSULT CRYPTO CENTER BEFORE DECLASSIFYING

Paraphrase not required. Handle as correspondence of classification carried hereon per paragraphs 17a(1)(2) and 41c(2)(3) and g(1), AR 380-5, 15 November 1949.

COPY No.

DECLASSIFIED  
Authority NND 975029



RECEIVED  
15 APR 1950  
G-4  
GHQ

GENERAL HEADQUARTERS, FAR EAST COM AND  
ADJUTANT GENERAL'S OFFICE  
RADIO AND CABLE CENTER

# INCOMING MESSAGE

*Restricted*  
ROUTINE

JA/rbo

6 Aug 50

G-4 ROUTING	
A O/S G-4	
B A/S G-4	
OPERATIONS	
CONST & FAC	
SUPPLY	
PETROLEUM	<input checked="" type="checkbox"/>
ADMINISTRATION	<i>J1</i>

FROM : COMSERVRON 3  
 TO : COMNAVFE (SAPOJ) (FOR INFO TO AREA PET OFF AND SAVOR)  
 INFO : CG RYCOM  
 NR : 050938 Z

*3191  
T/A1*

Tri Montly bulk Fuel Report for period 26 July through 4 Aug. Read in 3 columns. 115/145 avgas diesel NSFO. Opening inventory. 18, 5, 98. Receipts, 41 from Nemasket Cacapon and Cimarron, 27 from Cacapon and Cimarron, 141 from Cacapon Cimarron 50 from Sapoj Sasebo. Issues, 5 none, 96, closing inventory 54, 32, 193.

NO SIG

INFORMATION : G-4, FEAF

NOTE : This msg readdressed to CINCFE for info by COMNAVFE under DTG 060503 Z.

20026

ROUTINE  
*Restricted*

TOO : 050938 Z  
MCN : NONE

CONSULT CRYPTO CENTER BEFORE DECLASSIFYING

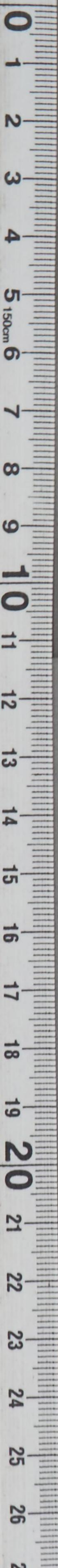
Paraphrase not required. Handle as correspondence of classification carried hereon per paragraphs 17a(1)(2) and 4lc(2)(3) and g(1), AR 380-5, 15 November 1949.

COPY No.



DECLASSIFIED

Authority NND 975029



GENERAL HEADQUARTERS, FAR EAST COM AND  
ADJUTANT GENERAL'S OFFICE  
RADIO AND CABLE CENTER

# INCOMING MESSAGE

*Restricted*  
ROUTINE

WAG/bry

26 Jul 50

FROM : COMSERVSQ 3  
TO : CINCFE (SAPOJ)  
INFO : CG RYCOM (APO) (SAPOR)

*319.1*

Tri Monthly Bulk Fuel Report for period 16 through 25 Jul.  
Read in 3 columns.

115/145	avgas	diesel
NSFO	Opening inventroy	11
1	86	receipts
19 from Passumpsic	4 from Sapor	63 from Passumpsic
and Natchaug.		
Issues.		
6 Navy	6 Sapor	None
51	closing inventory	1
8	5	98.
Estimated consumption	August.	
15	10	225.

INFORMATION : G-4

G-4 ROUTING	
<input checked="" type="checkbox"/> C/S G-4	
<input checked="" type="checkbox"/> NO SIG/S G-4	
<input checked="" type="checkbox"/> EXECUTIVE	
<input type="checkbox"/> OPERATIONS	
<input type="checkbox"/> CONST & FAC	
<input type="checkbox"/> SUPPLY	
<input checked="" type="checkbox"/> PETROLEUM	
<input checked="" type="checkbox"/> ADMINISTRATION	<i>91</i>

13579

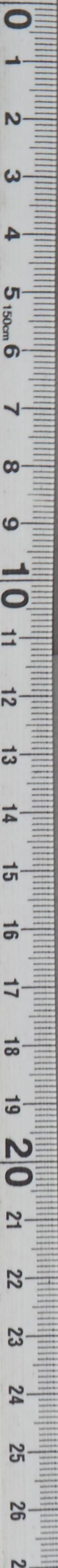
ROUTINE  
*Restricted*  
CONSULT CRYPTO CENTER BEFORE DECLASSIFYING  
TOO : 250245 Z  
MCN : 66764

Paraphrase not required. Handle as correspondence of classification carried hereon per paragraphs 17a(1)(2) and 41c(2)(3) and g(1), AR 380-5, 15 November 1949.

COPY No.

DECLASSIFIED

Authority NND 975029



RECEIVED  
26 JUL 1950

GENERAL HEADQUARTERS, FAR EAST COMMAND  
ADJUTANT GENERAL'S OFFICE  
RADIO AND CABLE CENTER

# INCOMING MESSAGE

UNCLASSIFIED  
ROUTINE

G-4 ROUTING	
EXECUTIVE	<input type="checkbox"/>
OPERATIONS	<input type="checkbox"/>
CONST & FAC	<input type="checkbox"/>
22 Jun 50	<input type="checkbox"/>
SUPPLY	<input type="checkbox"/>
PETROLEUM	<input checked="" type="checkbox"/>
ADMINISTRATION	<input checked="" type="checkbox"/>

FROM : COMFLTACT YOKOSUKA JAPAN  
 TO : CG EIGHTH ARMY (SAPOJ) YOKOHAMA JAPAN  
 INFO : CINCPAC TOKYO JAPAN  
 NR : 212245 Z

319.1  
TR/1

Trimonthly Bulk Petro Report period ending 20 Jun 50.  
 Black: Opening inventory 10, received 14, issued 14,  
 closing inventory 10.  
 Diesel: Opening inventory 3, received 3, issued 1, closing  
 inventory 5.  
 Estimated consumption next 30 days: Black 30, Diesel 8.

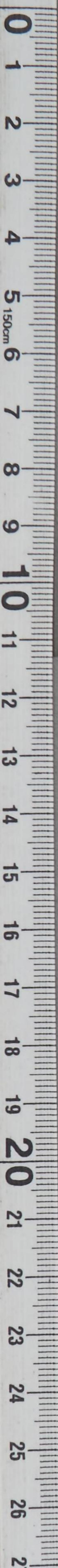
NO SIG

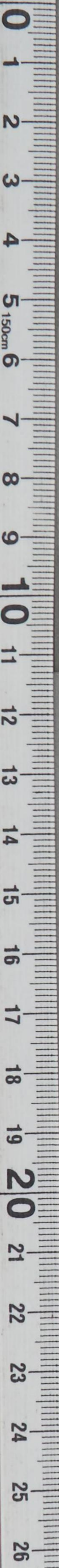
INFORMATION : G-4, COMNAVPE

97384

ROUTINE  
UNCLASSIFIED

TOO : 212245 Z  
MCN : AUC 133/21





TO : CG EIGHTH ARMY (SAPOL) YOKOHAMA 414-B  
FROM : COMHEAD, YOKOHAMA JAPAN  
SUBJECT: MONTHLY BULK REPORT PERIOD ENDING 30 JUN 50  
Block: Opening inventory 10, received 14, closed 14  
Block: Opening inventory 3, received 3, closed 1, closed  
inventory 5  
Estimated consumption next 30 days: Block 30, Block 10  
INFORMATION : D-4 COMPANY



UNCLASSIFIED  
ROUTINE  
TOP : 13343 Z  
MOR : AUG 13343 Z

GENERAL HEADQUARTERS, FAR EAST COMMAND  
ADJUTANT GENERAL'S OFFICE  
RADIO AND CABLE CENTER

# INCOMING MESSAGE

E 15/07y

UNCLASSIFIED  
ROUTINE

13 Jun 50

FROM : COMFLEACT YOKOSUKA JAPAN  
TO : CG EIGHTH ARMY (SAPOJ) YOKOHAMA JAPAN  
INFO : CINCPAC TOKYO JAPAN  
NR : 130255 Z

319.1  
↙

Tri-monthly Bulk Petro Report period ending 10 Jun 50.  
Black opening inventory 10 RCD 25 issued 25 closing  
inventory 10.  
Diesel opening inventory 4 RCD 1 issued 2 closing  
inventory 3.  
Estimated consumption next 30 days black 30 diesel 8.

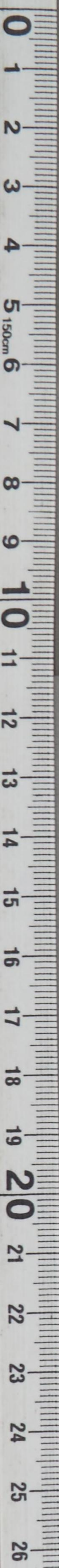
INFORMATION : G-4, COMNAVFE

NO SIG G-4 ROUTING	
A C/S G-4	_____
D AC/S G-4	_____
① EXECUTIVE	_____ <i>[Signature]</i>
OPERATIONS	_____
CONST & FAC	_____
SUPPLY	_____
PETROLEUM	_____ <i>[Checkmark]</i>
② ADMINISTRATION	_____ <i>[Signature]</i>

94423

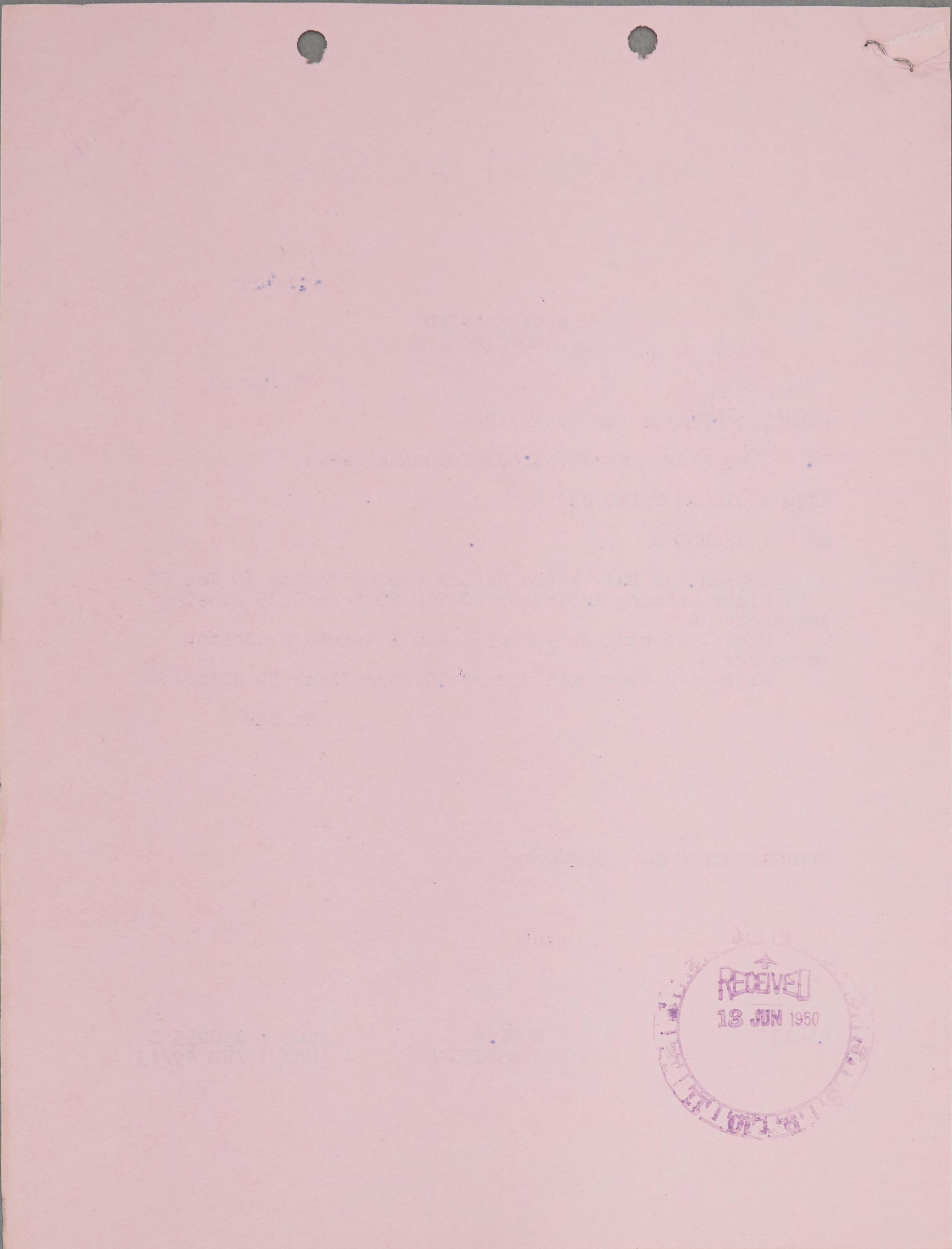
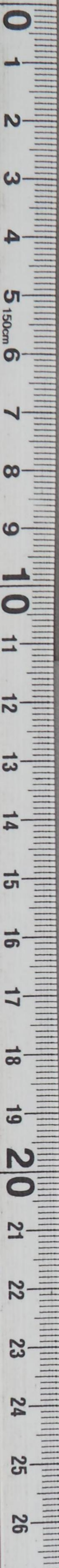
ROUTINE  
UNCLASSIFIED

TOO : 130255 Z  
MCN : AUB 49/13



DECLASSIFIED

Authority NND 975029



RECEIVED  
13 JUN 1950

GENERAL HEADQUARTERS, FAR EAST COMMAND  
ADJUTANT GENERAL'S OFFICE  
RADIO AND CABLE CENTER

# INCOMING MESSAGE *Maeda*

UNCLASSIFIED  
DEFERRED

1 Jun 50

FROM : COMFIEACT YOKOSUKA JAPAN  
TO : CG EIGHTH ARMY (SAPOJ) YOKOHAMA JAPAN  
INFO : CINCPAC TOKYO JAPAN  
NR : 010505 Z

*319. (Tri)*

Trimonthly Bulk Petro Report period ending 31 May 50.  
Black opening inventory 6, received 15, issued 11,  
closing inventory 10.  
Diesel opening inventory 5, received 0, issued 1,  
closing inventory 4.  
Estimated consumption next 30 days black 30, diesel 8.

NO SIG

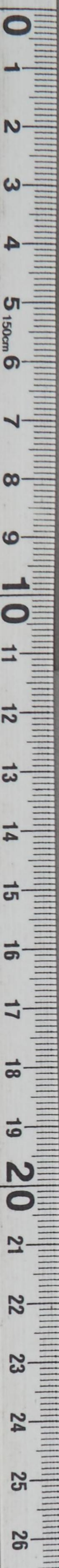
INFORMATION : G-4, COMNAVPE

G-4 ROUTING	
<input checked="" type="checkbox"/>	C/S G-4
<input checked="" type="checkbox"/>	AC/S G-4
<input checked="" type="checkbox"/>	EXECUTIVE
<input type="checkbox"/>	OPERATIONS
<input type="checkbox"/>	CONST & FAC
<input type="checkbox"/>	SUPPLY
<input checked="" type="checkbox"/>	PETROLEUM
<input type="checkbox"/>	ADMINISTRATION

90590

DEFERRED  
UNCLASSIFIED

TOO : 010505 Z  
MCN : AUA 50/01





GENERAL HEADQUARTERS, FAR EAST COMMAND  
ADJUTANT GENERAL'S OFFICE  
RADIO AND CABLE CENTER

*u*

# INCOMING MESSAGE

UNCLASSIFIED  
ROUTINE

G-4 ROUTING	
AC/S G-4	_____
AC/S G-4	_____
EXECUTIVE	_____ <i>g</i>
OPERATIONS	_____ <i>JA/bif</i>
CONST & FAC	_____
SUPPLY	_____
PETROLEUM	_____ <input checked="" type="checkbox"/>
	22 May 50
ADMINISTRATION	_____ <i>KEF</i>

FROM : COMFLTACT YOKOSUKA JAPAN  
 TO : CG EIGHTH ARMY (SAPOJ) YOKOHAMA JAPAN  
 INFO : CINCPAC TOKYO JAPAN  
 NR : 220400 Z *3191/7A1*

Tri-monthly Bulk Petro Report period ending 20 May 50.  
 Black:  
 Opening inventory 10,  
 Received 17,  
 Issued 21,  
 Closing inventory 6.  
 Diesel:  
 Opening inventory 5,  
 Received 0,  
 Issued 0,  
 Closing inventory 5.  
 Estimated consumption next 30 days:  
 Black 30,  
 Diesel 8.

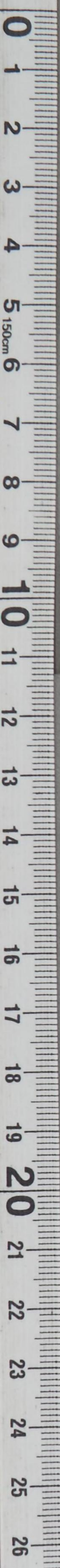
NO SIG

INFORMATION : G-4, COMNAVFE

87417

ROUTINE  
UNCLASSIFIED

TOO : 220400 Z  
MCN : AUA 23/22



GENERAL HEADQUARTERS, FAR EAST COMMAND  
ADJUTANT GENERAL'S OFFICE  
RADIO AND CABLE CENTER

*319  
Tri*

# INCOMING MESSAGE

UNCLASSIFIED  
ROUTINE

FROM : COMFLEACT YOKOSUKA JAPAN  
TO : CG EIGHTH ARMY (SAPOJ) YOKOHAMA JAPAN  
INFO : CINCPAC TOKYO JAPAN  
NR : 110126 Z

G-4 ROUTING	
PTS/bdh	<input checked="" type="checkbox"/>
C/S G-4	<input type="checkbox"/>
D AC/S G-4	<input type="checkbox"/>
EXECUTIVE	<input checked="" type="checkbox"/>
PLANS & POLICY	<input type="checkbox"/>
OPERATIONS	<input type="checkbox"/>
CONST & FAC	<input type="checkbox"/>
SUPPLY	<input type="checkbox"/>
PETROLEUM	<input checked="" type="checkbox"/>
PERSONNEL	<input type="checkbox"/>
ADMINISTRATION	<input checked="" type="checkbox"/>

11 May 50

Tri-Monthly Bulk Petro Report period ending 10 May 50.  
Black opening inventory 19 received 8 issued 17 closing  
inventory 10. Diesel opening inventory 5 received 2 issued  
2 closing inventory 5. Estimated consumption next 30 days  
black 30, diesel 8.

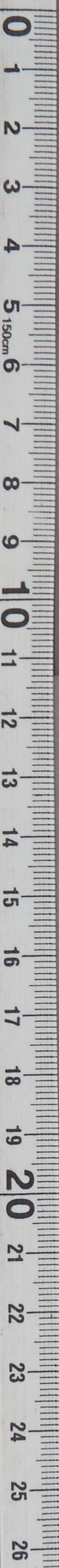
NO SIG

INFORMATION : G-4, COMNAVEP

84003

ROUTINE  
UNCLASSIFIED

TOO : 110126 Z  
MCN : AUB 27/11



GENERAL HEADQUARTERS, FAR EAST COMMAND  
ADJUTANT GENERAL'S OFFICE  
RADIO AND CABLE CENTER

# INCOMING MESSAGE

319.1

JA/jes

UNCLASSIFIED  
ROUTINE

1 May 50

FROM : COMFLEACT YOKOSUKA JAPAN  
TO : CG EIGHTH ARMY (SAPOJ) YOKOHAMA JAPAN  
INFO : CINCPAC TOKYO JAPAN  
NR : 010145 Z

Tri-monthly Bulk Petro Report period ending 30 Apr 50.  
Black opening inventory 15 received 23 issued 19 closing  
inventory 19. Diesel opening inventory 5 received 1 issued on  
closing inventory 5. Estimated consumption May, Jun, Jul  
black 30 diesel 8 each month.

INFORMATION : G-4, COMNAVFE

NO SIG-4 ROUTING	
A C/S G-4	_____
D AC/S G-4	_____
EXECUTIVE	_____
PLANS & POLICY	_____
OPERATIONS	_____
CONST & FAC	_____
SUPPLY	_____
PETROLEUM	_____
PERSONNEL	_____
ADMINISTRATION	_____

80510

ROUTINE  
UNCLASSIFIED

TOO : 010145 Z  
MCN : AUG 12/01

GENERAL HEADQUARTERS, FAR EAST COMMAND  
ADJUTANT GENERAL'S OFFICE  
RADIO AND CABLE CENTER

# INCOMING MESSAGE

*3691  
Tri*

ELT/pls

UNCLASSIFIED  
ROUTINE

21 Apr 50

FROM : COMFLEACT YOKOSUKA JAPAN  
TO : CG EIGHTH ARMY (SAPOJ) YOKOHAMA JAPAN  
INFO : CINCPAC TOKYO JAPAN  
NR : 210225 Z

Trimonthly Bulk Petro Report period ending 20 Apr 50.  
Black opening inventory 20 recd 16 issued 21 closing  
inventory 15.  
Diesel opening inventory 4 recd 2 issued 1 closing  
inventory 5.  
Estimated consumption next 30 days. Black 30 diesel 8.

NO SIG

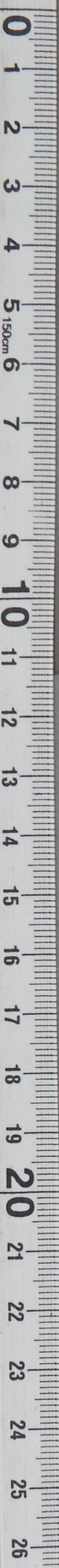
INFORMATION : G-4, COMNAVFE

G-4 ROUTING	
A C/S G-4	<input type="checkbox"/>
D AC/S G-4	<input type="checkbox"/>
EXECUTIVE	<input checked="" type="checkbox"/>
PLANS & POLICY	<input type="checkbox"/>
OPERATIONS	<input type="checkbox"/>
CONST & FAC	<input type="checkbox"/>
SUPPLY	<input type="checkbox"/>
PETROLEUM	<input checked="" type="checkbox"/>
PERSONNEL	<input type="checkbox"/>
ADMINISTRATION	<input checked="" type="checkbox"/>

77580

ROUTINE  
UNCLASSIFIED

TOO : 210225 Z  
FCN : AUB 33/21



GENERAL HEADQUARTERS, FAR EAST COMMAND  
ADJUTANT GENERAL'S OFFICE  
RADIO AND CABLE CENTER

# INCOMING MESSAGE

319.1

UNCLASSIFIED  
DEFERRED

FROM : COMFLEACT YOKOSUKA JAPAN  
TO : CG EIGHTH ARMY YOKOHAMA JAPAN  
INFO : CINCFE TOKYO JAPAN  
NR : 110215 Z

Tri-Monthly Bulk Petro Report period ending 10 Apr 50.  
Black opening inventory 20 recd 24 issued 24 closing in-  
ventory 20.  
Diesel opening inventory 5, recd none issued 1 closing  
inventory 4.  
Estd consumption next 30 days black 30 diesel 8.

NO SIG

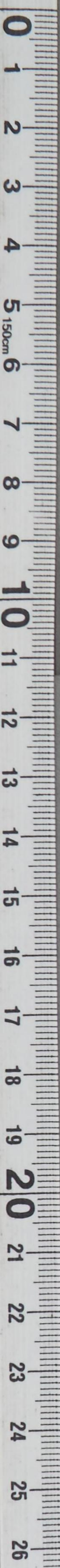
INFORMATION : G-4, COMNAVFE

G-4 ROUTING	
①	A C/S G-4
	D AG'S G-4
	EXECUTIVE
	WG/rjs & POLICY
	OPERATIONS
	CONST & FAC
	SUPPLY
11	APR 50
	PETROLEUM
	PERSONNEL
②	ADMINISTRATION

73985

DEFERRED  
UNCLASSIFIED

TOO : 110215 Z  
MCN : AUC 48/11



GENERAL HEADQUARTERS, FAR EAST COMMAND  
ADJUTANT GENERAL'S OFFICE  
RADIO AND CABLE CENTER

# INCOMING MESSAGE

ELT/hpm

*31 9.1*  
*[Handwritten scribbles]*

UNCLASSIFIED  
ROUTINE

1 Apr 50

FROM : COMFLEACT YOKOSUKA JAPAN  
TO : CG EIGHTH ARMY YOKOHAMA JAPAN  
INFO : CINCPAC TOKYO JAPAN  
NR : 010122 Z

Trimonthly bulk petro report period ending 31 Mar 50.  
Black opening inventory 17 received 16 issued 13 closing  
inventory 20. Diesel opening inventory 3 received 3 issued  
1 closing inventory 5. Estimated consumption Apr, May, Jun  
black 30 diesel 8 each month.

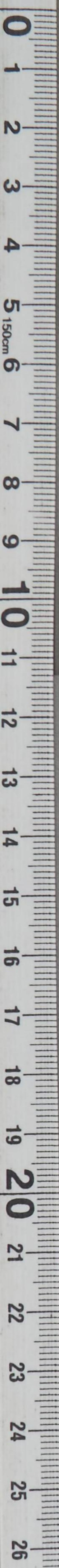
INFORMATION: G-4, COMNAVFE

NO SIG	
<input checked="" type="checkbox"/>	G-4 ROUTING
<input checked="" type="checkbox"/>	C/S G-4
<input checked="" type="checkbox"/>	D AC/S G-4
<input checked="" type="checkbox"/>	EXECUTIVE
<input checked="" type="checkbox"/>	PLANS & POLICY
<input checked="" type="checkbox"/>	OPERATIONS
<input checked="" type="checkbox"/>	CONST & FAC
<input checked="" type="checkbox"/>	SUPPLY
<input checked="" type="checkbox"/>	PETROLEUM
<input checked="" type="checkbox"/>	PERSONNEL
<input checked="" type="checkbox"/>	ADMINISTRATION

70841

ROUTINE  
UNCLASSIFIED

T00 : 010122 Z  
MCN : AUB 34/01



GENERAL HEADQUARTERS, FAR EAST COMMAND  
ADJUTANT GENERAL'S OFFICE  
RADIO AND CABLE CENTER

# INCOMING MESSAGE

WG/gdc

UNCLASSIFIED  
ROUTINE

21 Mar 50

FROM : COMFLEACT YOKOSUKA JAPAN  
TO : CG EIGHTH ARMY (SAPOJ) YOKOHAMA JAPAN  
INFO : CINCPAC TOKYO JAPAN  
NR : 210130 Z

*319.1  
Tsu*

Trimonthly Bulk Petro Report period ending 20 Mar 50.  
Black opening inventory 11 received 9 issued 3 closing in-  
ventory 17. Diesel opening inventory 4 received none issued  
1 closing inventory 3. Estimated consumption next 30 days  
black 30 diesel 8.

NO SIG

INFORMATION : ~~G-4~~

G-4 ROUTING	
A C/S G-4	_____
D AC/S G-4	_____
EXECUTIVE	_____
PLANS & POLICY	_____
OPERATIONS	_____
CONST & FAC	_____
SUPPLY	_____
PETROLEUM	_____ ✓
PERSONNEL	_____
ADMINISTRATION	_____ K

66572

ROUTINE  
UNCLASSIFIED

TOO : 210130 Z  
MCN : AUG 28/21

GENERAL HEADQUARTERS, FAR EAST COMMAND  
ADJUTANT GENERAL'S OFFICE  
RADIO AND CABLE CENTER

# INCOMING MESSAGE

*3190  
Tri*

ELT/rjs

UNCLASSIFIED  
ROUTINE

11 Mar 50

FROM : COMFLEACT YOKOSUKA JAPAN  
TO : CG EIGHTH ARMY (SAPOJ) YOKOHAMA JAPAN  
INFO : CINCPAC TOKYO JAPAN  
NR : 110225 Z

Tri-Monthly Bulk Petro Report period ending 10 Mar 50.  
Black opening inventory 19 recd 11 issued 19 closing  
inventory 11.  
Diesel opening inventory 6 recd none issued 2 closing  
inventory 4.  
Estd consumption next 30 days black 30 diesel 8.

INFORMATION : G-4

63292

ROUTINE  
UNCLASSIFIED

NO SIG  
G-4 ROUTINE

A C/S G-4	
B AC/S G-4	
EXECUTIVE	
PLANS & POLICY	
OPERATIONS	
CONST & FAC	
SUPPLY	
PETROLEUM	<input checked="" type="checkbox"/>
PERSONNEL	
ADMINISTRATION	

TOO : 110225 Z  
MCN : AUA 44/11



GENERAL HEADQUARTERS, FAR EAST COMMAND  
ADJUTANT GENERAL'S OFFICE  
RADIO AND CABLE CENTER

# INCOMING MESSAGE

*319.1  
Tom*

UNCLASSIFIED  
DEFERRED

G-4 ROUTING	
A C/S G-4	<input type="checkbox"/>
D AC/S G-4	<input type="checkbox"/>
EXECUTIVE <i>suppl</i> <i>djf</i>	<input type="checkbox"/>
PLANS & POLICY	<input type="checkbox"/>
OPERATIONS	<input type="checkbox"/>
CONST & FAC	<input type="checkbox"/>
SUPPLY 1 Mar 50	<input checked="" type="checkbox"/>
PETROLEUM	<input checked="" type="checkbox"/>
PERSONNEL	<input type="checkbox"/>
ADMINISTRATION	<input checked="" type="checkbox"/>

FROM : COMFLTACT YOKOSUKA JAPAN  
 TO : CG EIGHTH ARMY (SAPOJ) YOKOHAMA JAPAN  
 INFO : CINCPAC TOKYO JAPAN  
 NR : 010618 Z

Trimonthly bulk petro reperiod ending 28 Feb 50.  
 Black opening inventory 10 received 14 issued 5 closing inventory 19.  
 Diesel opening inventory none received 7 issued 1 closing inventory 6.  
 Estimated consumption next 30 days:  
 Black 30.  
 Diesel 8.

NO SIG

INFORMATION : G-4, COMNAVFE

59536

DEFERRED  
UNCLASSIFIED

TOO : 010618 Z  
MCN : AUC 100/01

GENERAL HEADQUARTERS, FAR EAST COMMAND  
ADJUTANT GENERAL'S OFFICE  
RADIO AND CABLE CENTER

# INCOMING MESSAGE

PTS/ehe

*319.1  
True*

UNCLASSIFIED  
ROUTINE

21 Feb 50

FROM : COMFLEACT YOKOSUKA JAPAN  
TO : CG EIGHTH ARMY (SAPOJ) YOKOHAMA JAPAN  
INFO : CINCPAC TOKYO JAPAN  
NR : 210202 Z

Tri-monthly Black Petro Report for period ending 20 Feb.  
Black opening inventory 15 received none, issued 5,  
closing inventory 10.  
Diesel opening inventory 2, received none, issued 2,  
closing inventory 0.  
Estimated consumption next 30 days black 30, diesel 8.

NO SIG

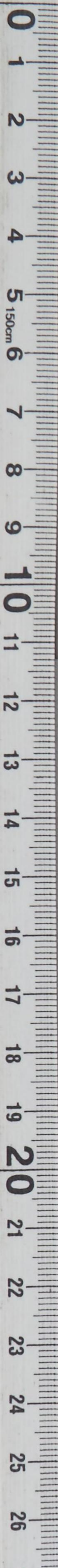
INFORMATION : G-4, COMNAVFE

G-4 ROUTING	
A C/S G-4	_____
D AC/S G-4	_____
EXECUTIVE	_____
PLANS & POLICY	_____
OPERATIONS	_____
CONST. & FAC	_____
SUPPLY	_____
PETROLEUM	_____ ✓
PERSONNEL	_____
ADMINISTRATION	_____ K

56583

ROUTINE  
UNCLASSIFIED

TOO : 210202 Z  
MCN : AUB 32/21



GENERAL HEADQUARTERS, FAR EAST COMMAND  
ADJUTANT GENERAL'S OFFICE  
RADIO AND CABLE CENTER

# INCOMING MESSAGE

31901

UNCLASSIFIED  
ROUTINE

G-4 ROUTING	
A C/S G-4	
D AC/S G-4	
EXECUTIVE	
PLANS <del>WG</del> POLICY	
OPERATIONS	
CONST & FAC	
SUPPLY	
PETROLEUM	11 Feb 50 ✓
PERSONNEL	
ADMINISTRATION	

FROM : COMFLEACT YOKOSUKA JAPAN  
 TO : CG EIGHTH ARMY (SAPOJ) YOKOHAMA JAPAN  
 INFO : CINCPAC TOKYO JAPAN  
 NR : 110130 Z

50. Trimonthly Bulk Petro Report for period ending 10 Feb

Black:  
 Opening inventory 20,  
 Rcd 25,  
 Issued 30,  
 Closing inventory 15.

Diesel:  
 Opening inventory 3,  
 Rcd none,  
 Issued 1,  
 Closing inventory 2.

Estimated consumption next 30 days:  
 Black 30,  
 Diesel 8.

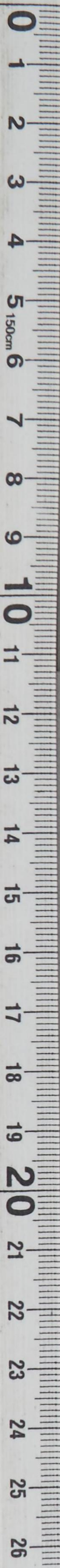
NO SIG

INFORMATION : G-4

53503

ROUTINE  
UNCLASSIFIED

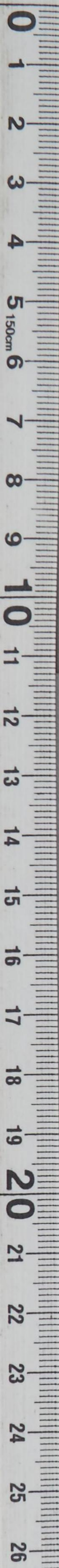
TOO : 110130 Z  
MCN : AUA 37/11



DECLASSIFIED

Authority NND 975029

2



GENERAL HEADQUARTERS, FAR EAST COMMAND  
ADJUTANT GENERAL'S OFFICE  
RADIO AND CABLE CENTER

# INCOMING MESSAGE

*31901*

ELT/hoo

UNCLASSIFIED  
ROUTINE

1 Feb 49

FROM : CONTACT YOKOSUKA JAPAN  
TO : CG EIGHTH ARMY (SAPOJ) YOKOHAMA JAPAN  
INFO : CINCPAC TOKYO JAPAN  
NR : 010145 Z

Tri-Monthly Bulk Petro Report for period ending 31 Jan 1950. Black opening inventory 12 received 28 issued 20 closing inventory 20. Diesel opening inventory 2 received 5 issued 4 closing inventory 3. Estimated consumption Feb, Mar, Apr black 30 diesel 8 each month.

INFORMATION : G-4, COMNAVFE

49716

ROUTINE  
UNCLASSIFIED

TOO : 010145 Z  
MCN : ADA 10/01

NO SIG

G-4 ROUTING

A C/S G-4

D AC/S G-4

EXECUTIVE

PLANS & POLICY

OPERATIONS

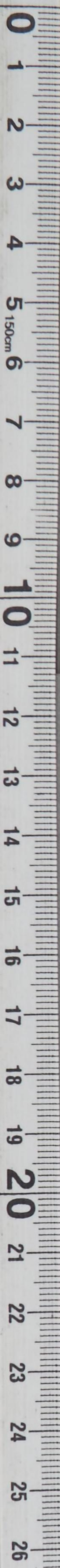
CONST & FAC

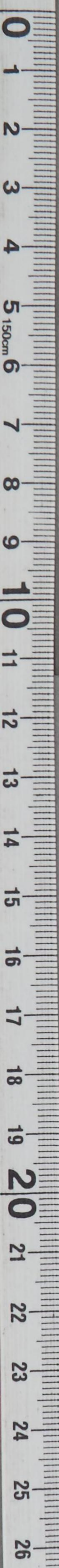
SUPPLY

PETROLEUM

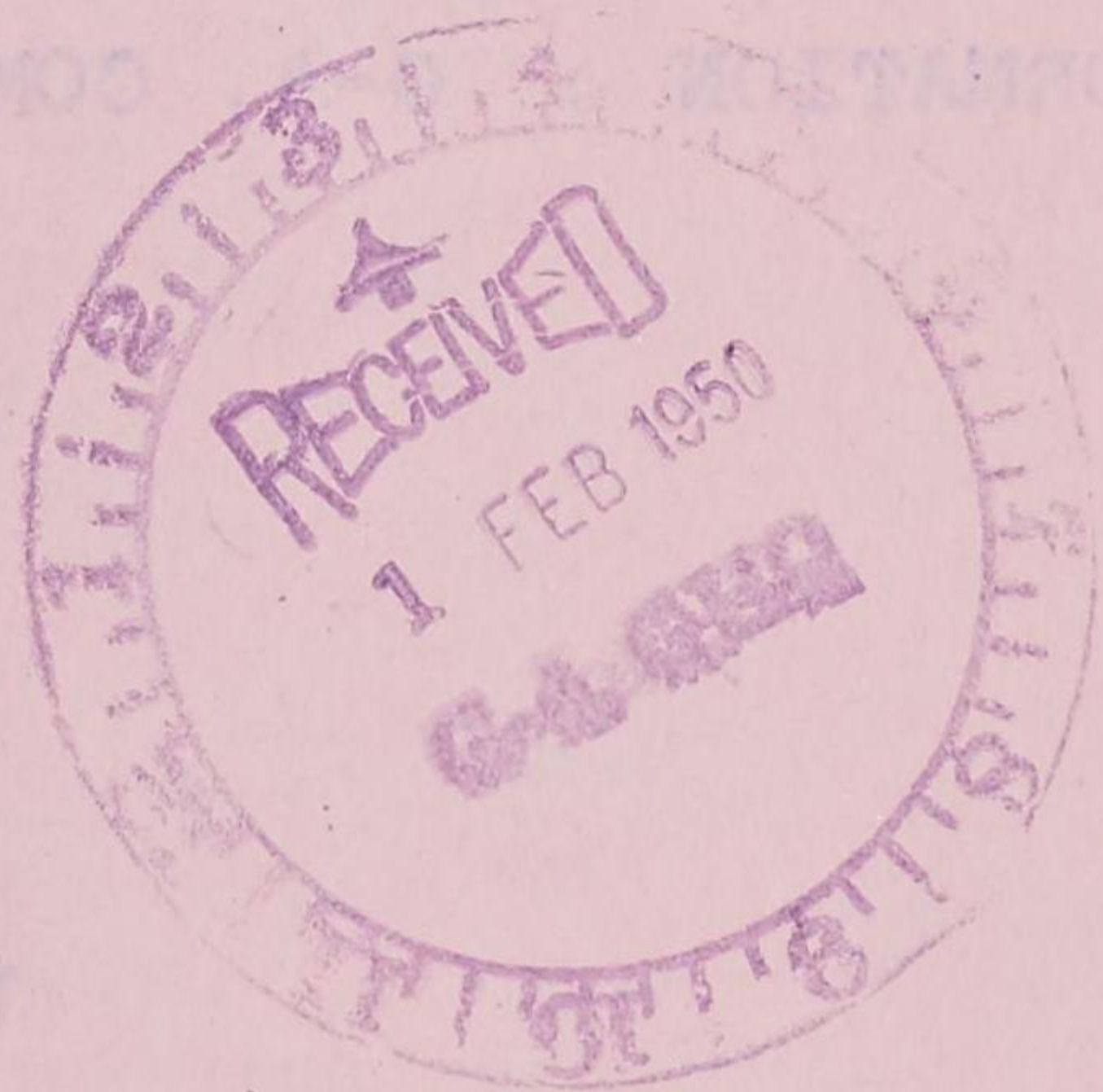
PERSONNEL

ADMINISTRATION





TO : 68 HAWTH AFB (SPO) YOKOHAMA JAPAN  
FROM : CONTACT YOKOSUKA JAPAN  
SUBJECT: MONTHLY BULK RETRO REPORT FOR PERIOD ENDING 31 JAN 1950. BULK RETRO REPORT IS RECEIVED 28 JAN 50  
CLOSING INVENTORY 30. BULK RETRO REPORT IS RECEIVED 28 JAN 50  
CLOSING INVENTORY 2. ESTIMATED CONSUMPTION FOR  
PERIOD 30 JAN 50 IS 8 CASES.



GENERAL HEADQUARTERS, FAR EAST COMMAND  
ADJUTANT GENERAL'S OFFICE  
RADIO AND CABLE CENTER

# INCOMING MESSAGE

319.1

PTS/jr

UNCLASSIFIED  
DEFERRED

23 Jan 50

FROM : COMFLTACTY YOKOSUKA JAPAN  
TO : CG EIGHTH ARMY (SAPOJ) YOKOHAMA JAPAN  
INFO : CINCFE TOKYO JAPAN  
NR : 230505 Z

Tri-Monthly Bulk Petro Report for period ending 20 Jan 1950.  
Black:

Opening inventory 12,  
Received 10,  
Issued 10,  
Closing inventory 12.

Diesel:  
Opening inventory 2,  
Received 1,  
Issued 1,  
Closing inventory 2.

Estimated consumption next 30 days:  
Black 30,  
Diesel 8.

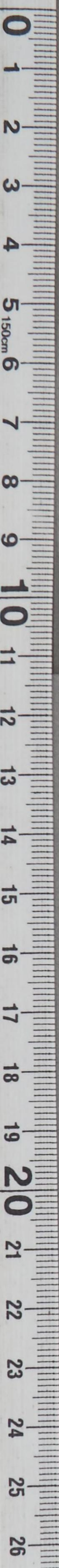
G-4 ROUTING	
A C/S G-4	
D AC/S G-4	
EXECUTIVE	
PLANS & POLICY	
OPERATIONS	
CONST & FAC	
SUPPLY	
PETROLEUM	
NO SIG	
PERSONNEL	
ADMINISTRATION	

INFORMATION : G-4, COMNAVFE

46361

DEFERRED  
UNCLASSIFIED

TOO : 230505 Z  
MCN : AUC 29/23



DECLASSIFIED

Authority NND 975029

0  
1  
2  
3  
4  
5  
6  
7  
8  
9  
10  
11  
12  
13  
14  
15  
16  
17  
18  
19  
20  
21  
22  
23  
24  
25  
26





GENERAL HEADQUARTERS, FAR EAST COM  
ADJUTANT GENERAL'S OFFICE  
RADIO AND CABLE CENTER

# INCOMING MESSAGE

G-4 ROUTING

A C/S G-4	
D AC/S G-4	
EXECUTIVE	
PLANS & POLICY	
OPERATIONS	
CONST & FAC	
TRANSPORTATION	
SUPPLY	
12 Jan 50	
PETROLEUM	<input checked="" type="checkbox"/>
BUDGET	
PERSONNEL	
ADMINISTRATION	<input checked="" type="checkbox"/>

WG/lfb

319.1

UNCLASSIFIED  
ROUTINE

FROM : COMFLTACTYS YOKOSUKA JAPAN

TO : CG EIGHTH ARMY (SAPO) YOKOHAMA JAPAN

INFO : CINCFE TOKYO JAPAN

NR : 120450 Z

Tri-monthly Bulk Petro Report ending 10 Jan 1950.  
Black opening Inventory 14 received 5 issued 7 closing  
Inventory 12. Diesel opening Inventory 2 received 2 issued  
1 closing Inventory 2. Estimated consumption next 30 days  
black 30 diesel 8.

NO SIG

INFORMATION : G-4, COMNAVFE

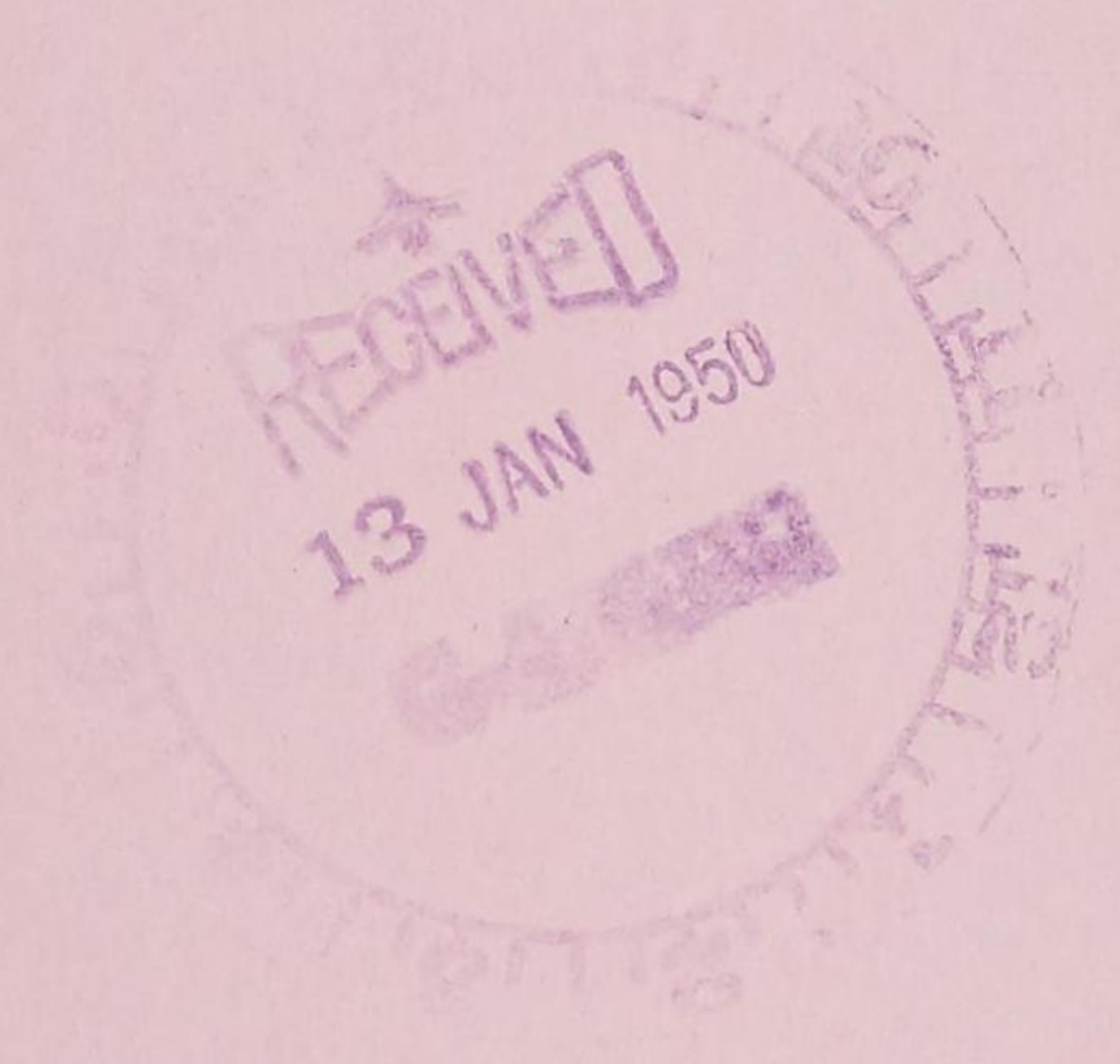
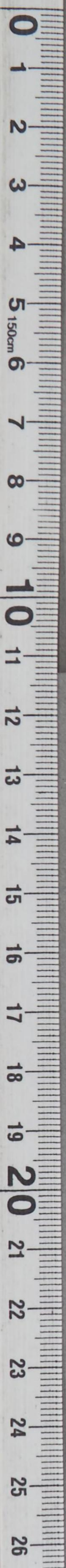
42888

ROUTINE  
UNCLASSIFIED

TOO : 120450 Z  
MCN : AUC 54/12

DECLASSIFIED

Authority NND 975029



GENERAL HEADQUARTERS, FAR EAST COMMAND  
ADJUTANT GENERAL'S OFFICE  
RADIO AND CABLE CENTER

# INCOMING MESSAGE

UNCLASSIFIED  
DEFERRED

G-4 ROUTING	
A/C/S G-4	
TER/tjc	
EXECUTIVE	
PLANS & POLICY	
OPERATIONS	
LOGISTICS & FAC	
3 Jan 50	
TRANSPORTATION	
SUPPLY	
PETROLEUM	/
BUDGET	
PERSONNEL	
ADMINISTRATION	81

FROM : COMFLTACTYS YOKOSUKA JAPAN  
 TO : CG EIGHTH ARMY (SAPOJ) TOKYO JAPAN  
 INFO : CINCPAC TOKYO JAPAN  
 NR : 030408 Z *319.1*

Tri-monthly bulk Retro Report for period ending 31 Dec 49.  
Black.

Opening inventory 9.  
Received 13;  
Issued 8.

Closing inventory 14.  
Diesel.

Opening inventory 3.  
Received 0;  
Issued 1.

Closing inventory 2.

Estimated consumption next 30 days black 30, diesel 8.

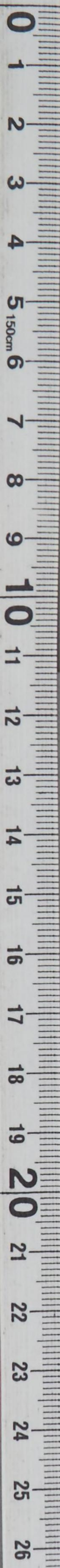
NO SIG

INFORMATION : G-4, COMNAVFE

39710

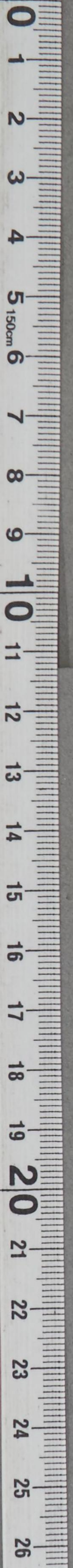
DEFERRED  
UNCLASSIFIED

TOO : 030408 Z  
MCN : AUG 26/03



DECLASSIFIED

Authority NND 975029



2



GENERAL HEADQUARTERS, FAR EAST COM AND  
ADJUTANT GENERAL'S OFFICE  
RADIO AND CABLE CENTER

# INCOMING MESSAGE

EFF/ws

*319.1  
Tri*

UNCLASSIFIED  
DEFERRED

21 Dec 49

FROM : COMFLTACTYS YOKOSUKA JAPAN  
TO : CG EIGHTH ARMY (SAPOJ) YOKOHAMA JAPAN  
INFO : CINCFE TOKYO JAPAN  
NR : 210455 Z

Trimonthly Bulk Petro Report for period ending 20 Dec 49.  
Black opening inventory 10 received 5 issued 6, closing  
inventory 9.  
Diesel opening inventory 3, received 2, issued 2, closing  
inventory 3.  
Estimated consumption next 30 days, black 30, diesel 8.

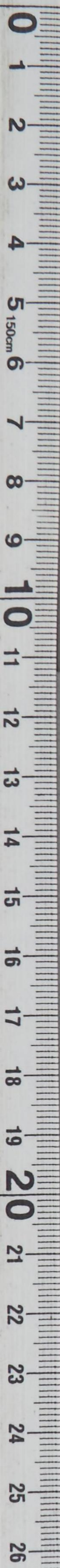
INFORMATION: G-4, COMNAVFE

A C/S G-4	NO SIG	<i>h</i>
D AC/S G-4		
EXECUTIVE		
PLANS & POLICY		
OPERATIONS		
CONST & FAC		
TRANSPORTATION		
SUPPLY		
PETROLEUM		<i>N</i>
BUDGET		
PERSONNEL		
ADMINISTRATION		<i>h</i>

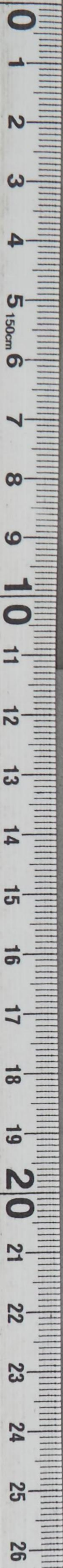
37083

DEFERRED  
UNCLASSIFIED

TOO : 210455 Z  
MCN : AUB 70/21



DECLASSIFIED  
Authority NND 975029



RECEIVED  
22 DEC 1964  
10:10 AM  
U.S. AIR FORCE  
HEADQUARTERS  
WASHINGTON, D.C.

DECLASSIFIED

Authority

NND 975029

GENERAL HEADQUARTERS, FAR EAST COMMAND  
ADJUTANT GENERAL'S OFFICE  
RADIO AND CABLE CENTER

# INCOMING MESSAGE

EFF/ehc

UNCLASSIFIED  
DEFERRED

*319-1  
Tri*

FROM : COMFLTACTYS YOKOSUKA JAPAN  
TO : CG EIGHTH ARMY YOKOHAMA JAPAN  
INFO : CINCPAC TOKYO JAPAN  
NR : 120635 Z

G-4 ROUTING	
A C/S G-4	<input type="checkbox"/>
D AG/S G-4	<input type="checkbox"/>
EXECUTIVE	<input type="checkbox"/>
PLANS & POLICY	<input type="checkbox"/>
OPERATIONS	<input type="checkbox"/>
CONST & FAC	<input type="checkbox"/>
TRANSPORTATION	<input type="checkbox"/>
SUPPLY	<input checked="" type="checkbox"/>
PETROLEUM	<input type="checkbox"/>
BUDGET	<input type="checkbox"/>
PERSONNEL	<input type="checkbox"/>
ADMINISTRATION	<input checked="" type="checkbox"/>

Tri-Monthly Bulk Petro Report for period ending 10 Dec 49.  
Black opening inventory 19 received 14 issued 23 closing inventory 10.  
Diesel opening inventory 1 received 3 issued 1 closing inventory 3.  
Estimated consumption next 30 days black 30, diesel 8.

NO SIG

INFORMATION : G-4, COMNAVPE

34514

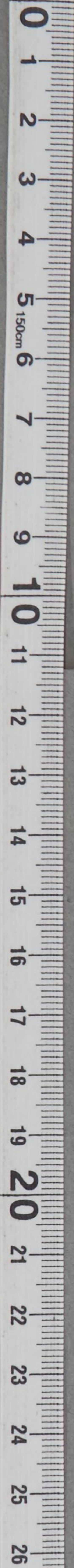
DEFERRED  
UNCLASSIFIED

TOO : 120635 Z  
MCN : AUB 42/12

DECLASSIFIED

Authority

NND 975029





DECLASSIFIED

Authority

NND 975029

GENERAL HEADQUARTERS, FAR EAST COMMAND  
ADJUTANT GENERAL'S OFFICE  
RADIO AND CABLE CENTER

# INCOMING MESSAGE

*319.1  
Tri*

UNCLASSIFIED  
ROUTINE

G-4 ROUTING	
A C/S 6-4	<input type="checkbox"/>
D AC/S 6-4	<input checked="" type="checkbox"/>
EXECUTIVE	<input type="checkbox"/>
PLANS & POLICY	<input type="checkbox"/>
OPERATIONS	<input type="checkbox"/>
CONSTRUCTION	<input type="checkbox"/>
TRANSPORTATION	<input type="checkbox"/>
SUPPLY	<input type="checkbox"/>
PETROLEUM	<input type="checkbox"/>
BUDGET	<input type="checkbox"/>
PERSONNEL	<input type="checkbox"/>
ADMINISTRATION	<input checked="" type="checkbox"/>

FROM : COMFLTACT YOKOSUKA JAPAN  
 TO : CG EIGHTH ARMY (SAPOJ) YOKOHAMA JAPAN  
 INFO : CINCFE TOKYO JAPAN  
 NR : 020720 Z

Trimonthly Bulk Petro Rpt for period ending 30 Nov 49.  
 Black opening inventory 17 received 13 issued 11 closing  
 inventory 19. Diesel opening inventory 1 received 1 issued  
 1 closing inventory 1. Estimated consumption next 30 days  
 black 30 diesel 8.

NO SIG

INFORMATION : G-4, COMNAVFE

31972

ROUTINE  
UNCLASSIFIED

TOO : 020720 Z  
MCN : AUB 81/02

DECLASSIFIED

Authority

NND 975029

0  
1  
2  
3  
4  
5  
6  
7  
8  
9  
10  
11  
12  
13  
14  
15  
16  
17  
18  
19  
20  
21  
22  
23  
24  
25  
26



DECLASSIFIED

Authority

NND 975029

GENERAL HEADQUARTERS, FAR EAST COMMAND  
ADJUTANT GENERAL'S OFFICE  
RADIO AND CABLE CENTER

# INCOMING MESSAGE

*319.1*  
*Tri Bulk Petro*

UNCLASSIFIED  
DEFERRED

PTS/rea/TLD

G-4 ROUTING	
A C/S G-4	
D AC/S G-4	
EXECUTIVE	
PLANS & POLICY	
OPERATIONS	
CONST & FAC	
TRANSPORTATION	
SUPPLY	
PETROLEUM	<input checked="" type="checkbox"/>
BUDGET	
PERSONNEL	
ADMINISTRATION	<input checked="" type="checkbox"/>

21 NOV 49

FROM : COMFLTACT YOKOSUKA JAPAN  
TO : CG EIGHTH ARMY (SAPOJ) YOKOHAMA JAPAN  
INFO : CINCPAC TOKYO JAPAN  
NR : 210515 Z

Trimonthly Bulk Petro Report for period ending 20 Nov 1949.  
Black: Opening inventory 10, received 14, issued 7, closing inventory 17.  
Diesel: Opening inventory 3, received none, issued 2, closing inventory 1.  
Estimated consumption next 30 days: Black 30, diesel 8.

NO SIG

INFORMATION : G-4

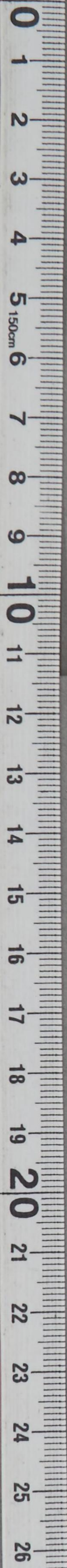
28914

DEFERRED  
UNCLASSIFIED

TTC : 210515 Z  
MCN : AUC 26/21

DECLASSIFIED

Authority NND 975029



RECEIVED  
22 NOV  
AM  
U.S. AIR FORCE  
HEADQUARTERS  
WASHINGTON, D.C.

DECLASSIFIED

Authority

NND 975029

GENERAL HEADQUARTERS, FAR EAST COM AND  
ADJUTANT GENERAL'S OFFICE  
RADIO AND CABLE CENTER

39-1 Tri

# INCOMING MESSAGE

UNCLASSIFIED  
DEFERRED

JA/tjc/JA

15 Nov 49

G-4 ROUTING	
A C/S G-4	
D AC/S G-4	
EXECUTIVE	
PLANS & POLICY	
OPERATIONS	
CONST & FAC	
TRANSPORTATION	
SUPPLY	
PETROLEUM	<input checked="" type="checkbox"/>
BUDGET	
PERSONNEL	
ADMINISTRATION	<input checked="" type="checkbox"/>

FROM : COMFLTACTYS YOKOSUKA JAPAN

TO : CG EIGHTH ARMY (SAEJOJ) YOKOHAMA JAPAN, CINCFE TOKYO  
JAPAN

NR : 142330 Z

Tri-monthly bulk petro report for period ending 10 Nov.  
 Black opening inventory 10,  
 Received 42,  
 Issued 42,  
 Closing inventory 10.  
 Diesel opening inventory 1,  
 Received 3,  
 Issued 1,  
 Closing inventory 3.  
 Estimated consumption next 30 days :  
 Black 30,  
 Diesel 8.

NO SIG

INFORMATION : G-4, COMNAVFE

27080

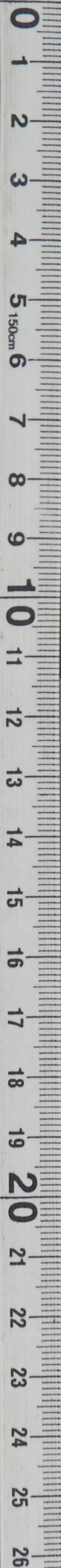
DEFERRED  
UNCLASSIFIED

TOO : 142330 Z  
MCN : AUC 04/15

DECLASSIFIED

Authority

NND 975029



GENERAL HEADQUARTERS, FAR EAST COMMAND  
ADJUTANT GENERAL'S OFFICE  
RADIO AND CABLE CENTER

# INCOMING MESSAGE

*J1*

UNCLASSIFIED  
DEFERRED

FROM : COMFLTACTYS YOKOSUKA JAPAN  
TO : CG EIGHTH ARMY (SAPOJ) YOKOHAMA JAPAN  
INFO : CINCPAC TOKYO JAPAN  
NR : 020651 Z

*319.1*

2 Nov 49

G-4 ROUTING	
JA/ jpb/ TER	
D AC/S G-4	
EXECUTIVE	<i>[initials]</i>
PLANS & POLICY	
OPERATIONS	
CONST & FAC	
TRANSPORTATION	
SUPPLY	
PETROLEUM	<input checked="" type="checkbox"/>
BUDGET	
PERSONNEL	
ADMINISTRATION	<i>A</i>

Trimonthly Bulk Petro Report for period ending 31 Oct.  
Black:

Opening inventory 17.  
Received 23.  
Issued 30.  
Closing inventory 10.

Diesel:

Opening inventory 2.  
Received 1 issued 2.  
Closing inventory 1.

Estimated consumption next 30 days.

Black 30.  
Diesel 8.

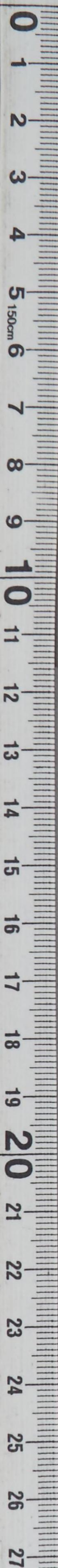
NO SIG

INFORMATION : *G-4*, COMNAVFE

23965

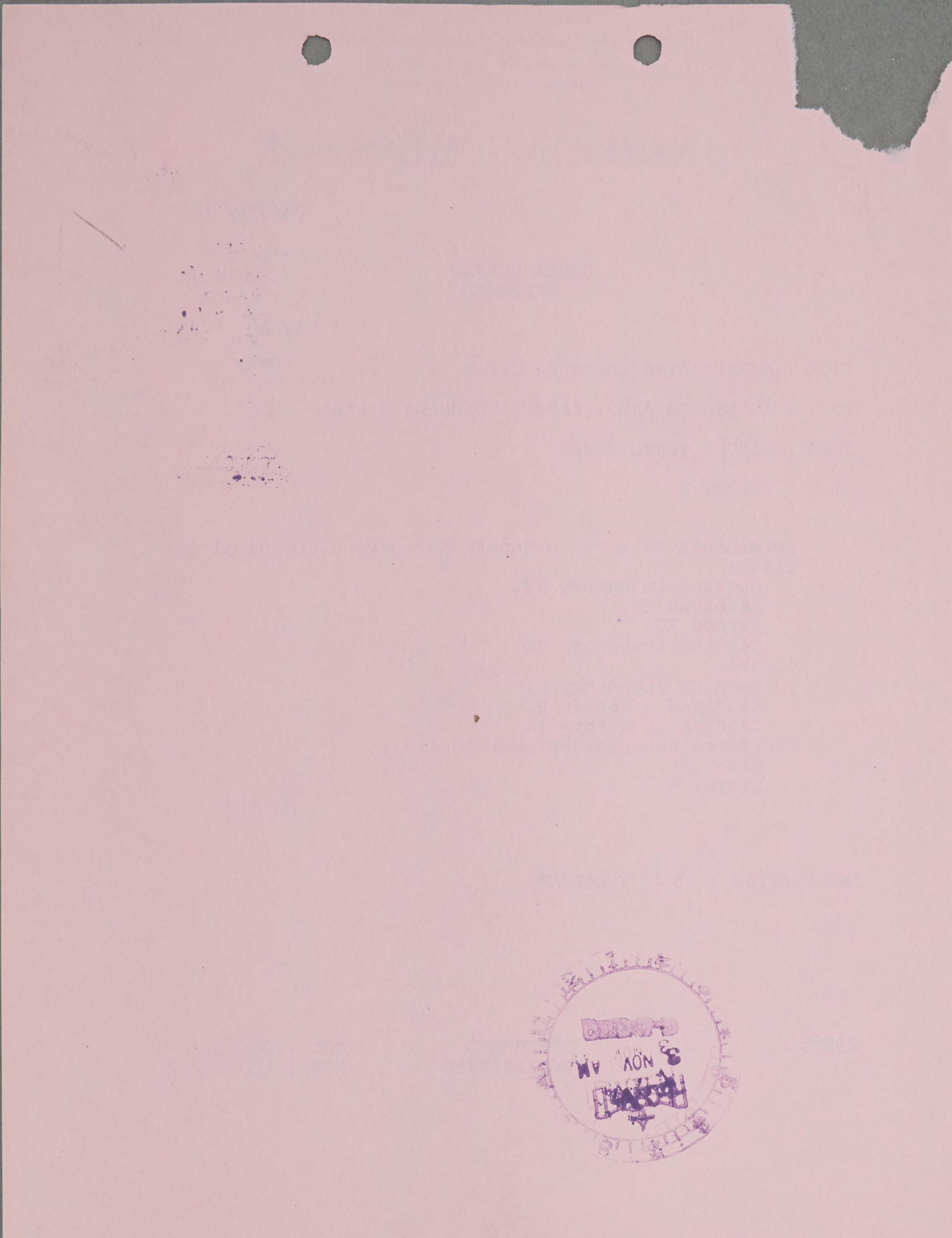
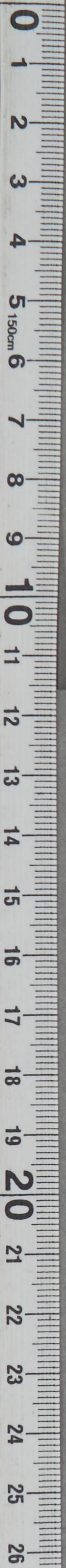
DEFERRED  
UNCLASSIFIED

TOO : 020651 Z  
MCN : AUD 68/02



DECLASSIFIED

Authority NND 975029





GENERAL HEADQUARTERS, FAR EAST COMMAND  
ADJUTANT GENERAL'S OFFICE  
RADIO AND CABLE CENTER

21

*319.1*  
*Trm Monthly*

# INCOMING MESSAGE

G-4 ROUTING	
A C/S G-4	_____
D AC/S G-4	_____
EXECUTIVE	_____ <i>100</i>
PLANS & POLICY	_____
OPERATIONS	_____
CONST & FAC	_____
TRANSPORTATION	_____
SUPPLY	_____
EFF/cem/TLDEUM	_____ <i>✓</i>
BUDGET	_____
PERSONNEL	_____
ADMINISTRATION	_____ <i>✓</i>

UNCLASSIFIED  
DEFERRED

EFF/cem/TLDEUM

24 Oct 49

FROM : COM FLTACTYS YOKOSUKA JAPAN  
 TO : CG EIGHTH ARMY (SOPAJ) YOKOHAMA JAPAN  
 INFO : CINCFE TOKYO JAPAN  
 NR : 240425 Z

Trimonthly Bulk Petro Report for pd ending 20 Oct. Black opening inventory 19, rec 11, issued 13, closing inventory 17. Diesel opening inventory 2, received 1, issued 1, closing inventory 2. Estimated consumption next 30 days black 30, diesel 8.

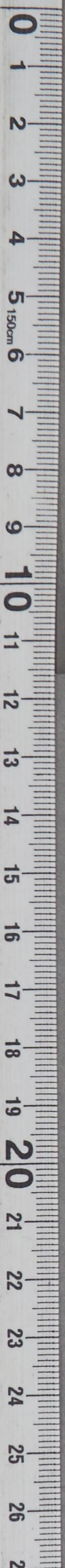
NO SIG

INFORMATION : G-4, COMNAVFE

21294

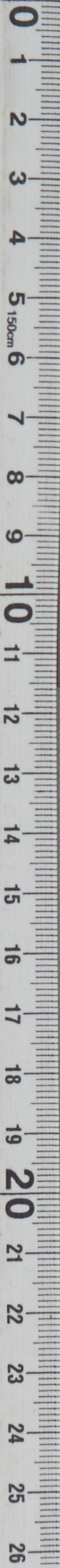
DEFERRED  
UNCLASSIFIED

TOO : 240425 Z  
MCN : AUB 29/24



DECLASSIFIED

Authority NND 975029



RECEIVED  
24 OCT P M  
64-649

GENERAL HEADQUARTERS, FAR EAST COMMAND  
ADJUTANT GENERAL'S OFFICE  
RADIO AND CABLE CENTER

# INCOMING MESSAGE

*319.1 Tri*

UNCLASSIFIED  
ROUTINE

FROM : COMFLTACTYS YOKOSUKA  
TO : CG EIGHTH ARMY (JAFOJ) YOKO JAPAN  
INFO : CINCPAC TOKYO JAPAN  
NR : 120425 Z

*WAP*

AFA

G-4 ROUTING	
A C/S G-4	
D AC/S G-4	
EXECUTIVE	<i>[Signature]</i>
PLANS & POLICY	
OPERATIONS	
CONST & FAC	
TRANSPORTATION	
SUPPLY	
PETROLEUM	<input checked="" type="checkbox"/>
BUDGET	
PERSONNEL	
ADMINISTRATION	<i>[Signature]</i>

12 Oct 49

Trinonthly Bulk Petro Report for period ending 10 Oct.  
Black opening inventory 14.  
Received 14 issued 9 closing inventory 19.  
Diesel opening inventory 2.  
Received 1 issued 1 closing inventory 2.  
Estimated consumption next 30 days black 30, Diesel 8.

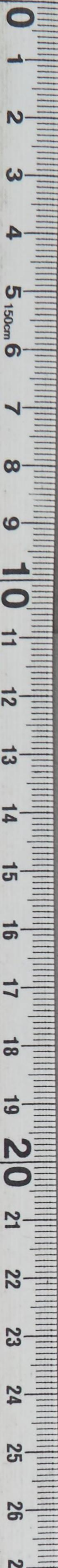
NO SIG

INFORMATION : G-4, COMNAVFE

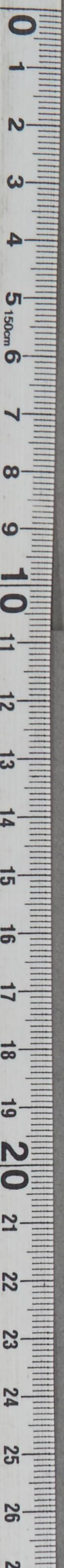
18049

ROUTINE  
UNCLASSIFIED

TOO : 120425 Z  
MCN : AUB 41/12



DECLASSIFIED  
Authority NND 975029



GENERAL HEADQUARTERS, FAR EAST COM AND  
ADJUTANT GENERAL'S OFFICE  
RADIO AND CABLE CENTER

JA  
ekc

# INCOMING MESSAGE

ROUTING	
JA	
A C/S G-4	
D AC/S G-4	
EXECUTIVE	
PLANS & POLICY	
OPERATIONS	
CONST & FAC	
TRANSPORTATION	
SUPPLY	
PETROLEUM	<input checked="" type="checkbox"/>
BUDGET	
PERSONNEL	
ADMINISTRATION	<input checked="" type="checkbox"/>

UNCLASSIFIED  
DEFERRED

319.1

3 Oct 49

FROM : COMFLTACT YOKOSUKA JAPAN  
 TO : CG EIGHTH ARMY (SAPOJ) YOKOHAMA JAPAN  
 INFO : CINCPAC TOKYO JAPAN  
 NR : 030425 Z

Trimonthly Bulk Petro Report for period ending 30 sep.  
 Black opening inventory 16. received none issued 2 closing  
 inventory 14.  
 Diesel opening inventory 2 received none issued none closing  
 inventory 2.  
 Estimated consumption October, November, December: Black  
 30, diesel 8 each month.

NO SIG

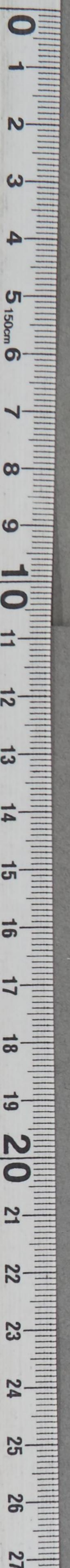
INFORMATION : G-4, COMNAVEF

15443

DEFERRED  
UNCLASSIFIED

TOO : 030425 Z  
MCN : AUD 01/03

DECLASSIFIED  
Authority NND 975029



RECEIVED  
3 OCT 1960  
64-800

GENERAL HEADQUARTERS, FAR EAST COMMAND  
ADJUTANT GENERAL'S OFFICE  
RADIO AND CABLE CENTER

319.1  
Tri

# INCOMING MESSAGE

UNCLASSIFIED  
ROUTINE

PTS  
ehc

G-4 ROUTING	
A. C/S G-4	
B. AC/S G-4	
C. EXECUTIVE	<input checked="" type="checkbox"/>
D. PLANS & POLICY	
E. OPERATIONS	
F. CONST & FAC	
G. TRANSPORTATION	
H. SUPPLY	
I. PETROLEUM	<input checked="" type="checkbox"/>
J. BUDGET	
24 Sep 49	
K. PERSONNEL	
L. ADMINISTRATION	<input checked="" type="checkbox"/>

FROM : CTG 70.7 (AT SEA)  
 TO : COM NAVAL FORCES PHILIPPINES  
 INFO : CINCPAC TOKYO JAPAN  
 NR : 240240 Z

Your 200055 Z Aug. Tri Monthly Bulk Fuel Report for period 15 through 25 Sep. Products read in 3 columns.

	Black.	Diesel.	115/145 AVGAS
A.	63.	7.	3
B.	All O.		
C.	16.	1	0
D.	47.	6	3
E and F.	36.	3	0
G.	45	3	1

NO SIG

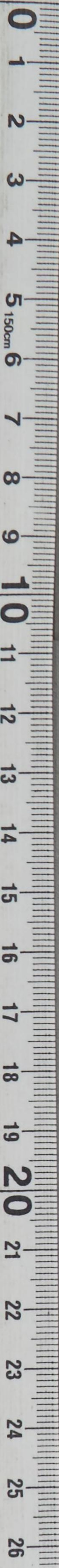
INFORMATION : G-4, FEAF, COMNAVFE

13322

ROUTINE  
UNCLASSIFIED

TOO : 240240 Z  
MCN : AUB 81/24

DECLASSIFIED  
Authority NND 975029



RECEIVED  
25 SEP A M  
[Signature]



GENERAL HEADQUARTERS, FAR EAST COMMAND  
ADJUTANT GENERAL'S OFFICE  
RADIO AND CABLE CENTER

4	ROUTING
1	EXECUTIVE
	PLANS & POLICY
	OPERATIONS
	CONST & FAC
	TRANSPORTATION
	SUPPLY
	PETROLEUM
	BUDGET
	PERSONNEL
	ADMINISTRATION

# INCOMING MESSAGE

31.9.1

UNCLASSIFIED  
DEFERRED

23 Sept 49

FROM : COMFITACTYS YOKOSUKA JAPAN  
 TO : CG EIGHTH ARMY (SAPOJ) YOKOHAMA JAPAN  
 INFO : CINCFE TOKYO JAPAN  
 NR : 230005 Z

Trimonthly Bulk Petro Report for period ending 20 Sep.  
 Black opening inventory 7 received 19 issued 10 closing  
 inventory 16. Diesel opening inventory 4 recd 1 issued  
 3 closing inventory 2. Estimated consumption next 30 days  
 black 30 diesel 8.

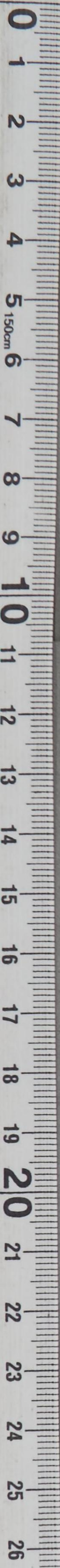
NO SIG

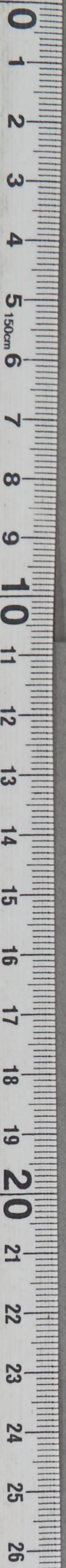
INFORMATION : G-4

12771

DEFERRED  
UNCLASSIFIED

TOO : 230005 Z  
MCN : AUD 15/23





*[Faint, illegible text, likely bleed-through from the reverse side of the page]*

*[Faint, illegible text at the bottom of the page, possibly a footer or classification marking]*

GENERAL HEADQUARTERS, FAR EAST COMMAND  
ADJUTANT GENERAL'S OFFICE  
RADIO AND CABLE CENTER

# INCOMING MESSAGE

G-4 ROUTINE

A C/S G-4

D AC/S G-4 JA

EXECUTIVE hlp

ANS & POLICY

OPERATIONS

CONST & FAC

TRANSPORTATION

SUPPLY

PETROLEUM

BUDGET

PERSONNEL

ADMINISTRATION

UNCLASSIFIED  
ROUTINE

14 Sep 49

FROM : CTG 70.7 (AT SEA)

TO : COMNAVPHIL MANILA LUZON PI

INFO : CINCPAC TOKYO JAPAN

NR : 140140 Z

319.1

Your 200055 Z Aug. Tri Monthly Bulk Fuel Report for period 5 through 15 Sep. Products read in three column. Black. Diesel. 115/145 avgas.

A.	37	7	0
B.	48	0	3
C.	To 7th Task Fleet. 22	0	0
D.	63	7	3
E.	20	2	0
F.	20	2	0
G.	45	3	1

Black received from Mattaponi.  
Avgas from Yokosuka via Mispillion(AO-105) now 7th task Fleet Station Tanker.

NO SIG

INFORMATION : G-4, COMNAVPH, FEAF

09902

ROUTINE  
UNCLASSIFIED

TOO : 140140 Z  
MCN : AUC 46/14

DECLASSIFIED  
Authority NND 975029



[Faint, illegible text and markings on the page, possibly bleed-through from the reverse side. Some faint words like 'RECEIVED' and 'SEP' are visible.]



GENERAL HEADQUARTERS, FAR EAST COMMAND  
ADJUTANT GENERAL'S OFFICE  
RADIO AND CABLE CENTER

G-4 ROUTING	
A C/S G-4	_____
D AC/S G-4	_____
EXECUTIVE	_____
PLANS & POLICY	_____
OPERATIONS	_____
CONST & FAC	_____
TRANSPORTATION	_____
SUPPLY	_____
PETROLEUM	_____
BUDGET	_____
PERSONNEL	_____
ADMINISTRATION	_____

# INCOMING MESSAGE

*319.1  
TRT*

UNCLASSIFIED  
DEFERRED

TBB  
1j1

TBB

13 Sep 49

FROM : COMELTACTYS YOKOSUKA  
 TO : CG EIGHTH ARMY (SAPOJ) YOKOHAMA JAPAN  
 INFO : CINCFE TOKYO JAPAN  
 NR : 130200 Z

Trimonthly Bulk Petro Report for period ending 10 Sep.  
 Black opening inventory 13 received 2 issued 8;  
 Closing inventory 7.  
 Diesel opening inventory 4 received 2 issued 2;  
 Closing inventory 4.  
 Estimated consumption next 30 days black 30 diesel 8.

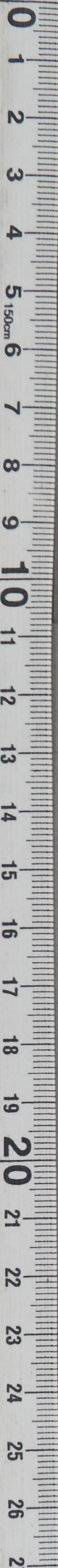
NO SIG

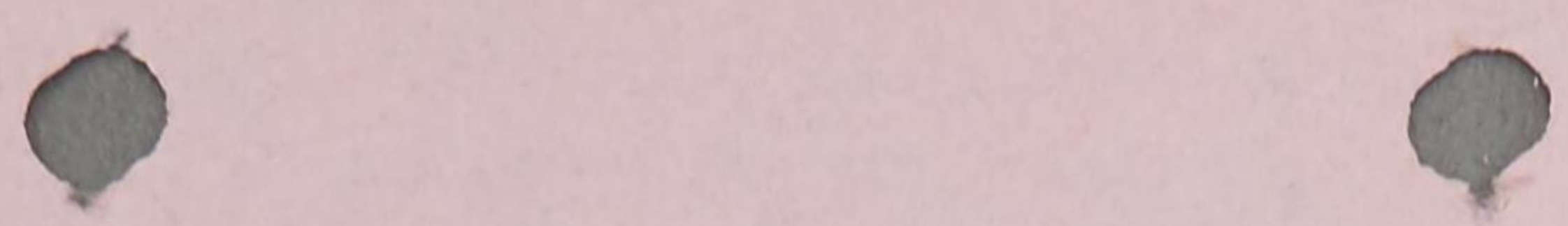
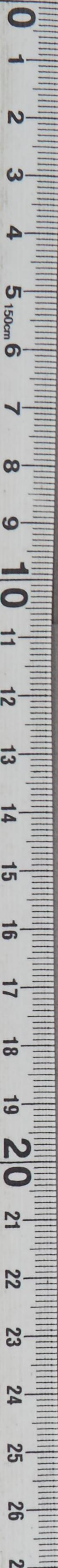
INFORMATION : G-4, COMNAVFE

09450

DEFERRED  
UNCLASSIFIED

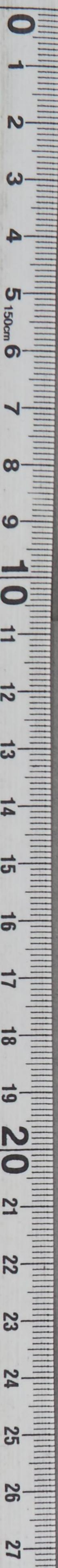
TOO : 130200 Z  
MCN : AUC 31/13





RECEIVED  
13 SEP P M  
[Signature]

DECLASSIFIED  
Authority NND 975029



SECRET

SECRET