

CVE-93/A16-3/A9

U.S.S. MAKIN ISLAND (CVE 93)
c/o Fleet Post Office
San Francisco, California

Serial: 002

SECRET

Subject: Action Report - Occupation of Iwo Jima.

PHOTOGRAPHIC SECTION

The photos in this section are filed chronologically and give a general idea of the beaches and terrain of Iwo Jima, together with action shots related to U.S.S. MAKIN ISLAND's part in the Iwo Jima operation.

All of these pictures were taken by MAKIN ISLAND or VC-84 personnel with the exception of the night action shot of the BISMARCK SEA (CVE 95) on fire after being struck by a suicide plane on the evening of 21 February 1945. The latter was taken by U.S.S. LUNGA POINT (CVE 94).

Eleven photographic missions were launched from this ship during the course of the operation.

1650 negatives were either mailed to CinCPoa or dropped for CTF 51 alongside U.S.S. ELDORADO or U.S.S. ERSKINE.

ENCLOSURE (B).

U.S.S. MAKIN ISLAND ~ 17 February 1945 - Operations area west of Iwo Jima
D-2 Day



U.S.S. MAKIN ISLAND - 17 February 1945 - Operations area west of Iwo Jima
D-2 Day



NO. DATE

UNIT U.S.S. MAIN ISLAND

MAGNETIC

U.S.S. MAIN ISLAND

U.S.S. MAIN ISLAND
MAGNETIC

Preparing to come alongside tanker 13 February 1945 off Saipan



Preparing to come alongside tanker 13 February 1945 off Saipan



NO. DATE FEB 13 1945
U. S. S. MAKIN ISLAND

UNIT

MADE FOR

SUBJECT

*U. S. S. Makin Island
approaching tanker preparatory
to taking on fuel from tanker*

OFFICIAL PHOTOGRAPH
NOT TO BE USED FOR PUBLICATION
BY ORDER OF
THE CHIEF OF THE BUREAU
OF AERONAUTICS

U.S.S. MAKIN ISLAND fueling from U.S.S. ESCALANTE (AO-70) south of Iwo
Jima 23 February 1945



U.S.S. MAKIN ISLAND fueling from U.S.S. ESCALANTE (AO-70) south of Iwo
Jima 23 February 1945



FEB 23 1945

NO..... DATE.....

UNIT..... U. S. S. MAKIN ISLAND.....

MADE FOR.....

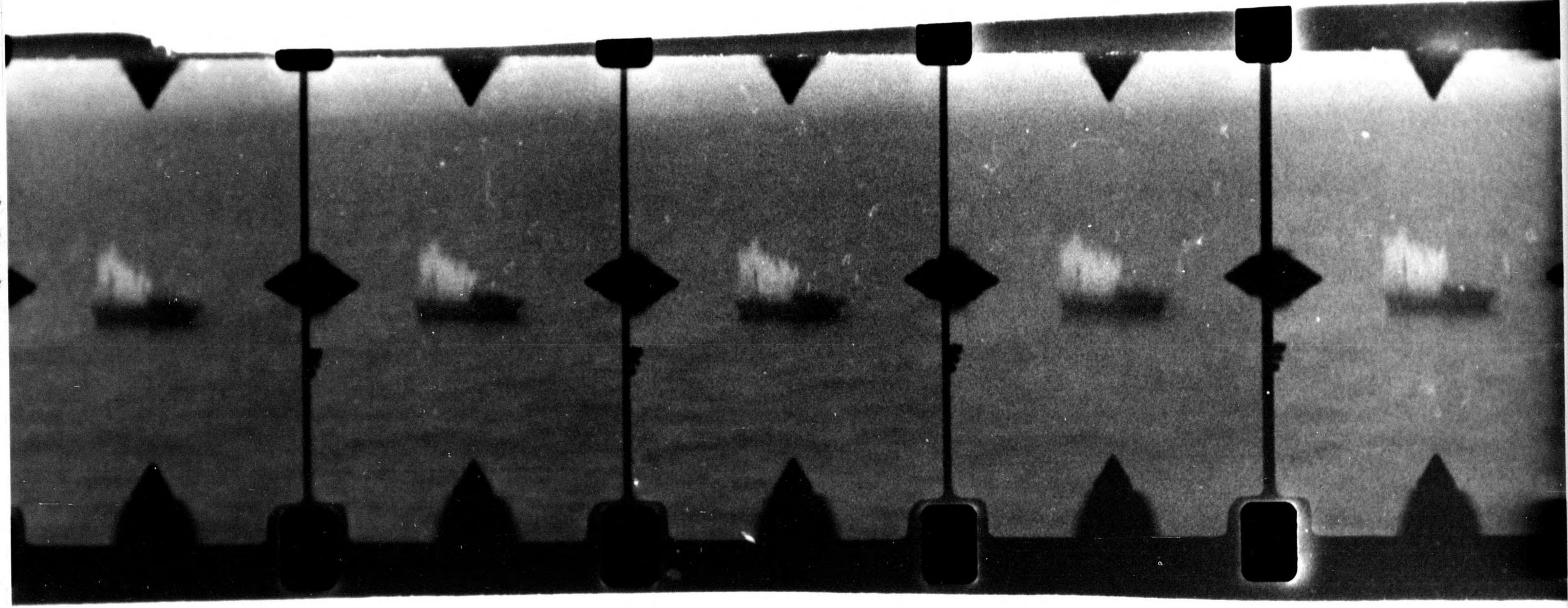
SUBJECT *U.S.S. Escalante (SS711)*
fueling U.S.S. Makin Island
(CVE # 93) in a heavy sea

NOT TO BE REPRODUCED
WITHOUT THE APPROVAL OF
THE CHIEF OF THE BUREAU
OF AERONAUTICS

Enemy lugger under rocket and strafing attack by MAKIN ISLAND VF division
16 February 1945



Enemy lugger under rocket and strafing attack by MAKIN ISLAND VF division
16 February 1945



NO. DATE

UNIT

.....
.....
.....
.....
.....
.....
.....

OFFICIAL COPY
NOT TO BE USED FOR FILING
BY THE
OFFICE OF THE
COMMISSIONER

Fire support ships bombarding Iwo Jima D-2 Day, 17 February 1945



Fire support ships bombarding Iwo Jima D-2 Day, 17 February 1945



NO. DATE

UNIT. U. S. S. MAKIN ISLAND

MADRE TO

SUBJECT: Iwo Jima looking No. East

View showing position ships attacking island

D-2 lens 8 1/4" Alt. about 5000'

FOR THE DIRECTOR

THE NATIONAL ARCHIVES

OF COLLEGE PARK, MARYLAND

Gunfire support ships bombarding Iwo Jima D-2 Day, 17 February 1945.
Looking north.



Gunfire support ships bombarding Iwo Jima D-2 Day, 17 February 1945.
Looking north.



FEB 7 1943

UNIT..... U. S. S. MAKIN ISLAND.....

MADE FOR.....

SUBJECT Two jima looking North
View showing disposition of ships
attacking island
D-2. Lens 8 1/2"
alt about 5,500'

OFFICIAL PHOTOGRAPH
NOT TO BE REPRODUCED

Bombardment Iwo Jima D-2 Day, 17 February 1945. Looking north west.



Bombardment Iwo Jima D-2 Day, 17 February 1945. Looking north west.



NO..... DATE ~~FEB 19~~ FEB 17 1945

U. S. S. MAKIN ISLAND

UNIT.....

MADE FOR.....

SUBJECT *two juna looking at*

new shows position of ships

attacking island

at about 5,00'

OFFICIAL PHOTOGRAPH

NOT TO BE REPRODUCED OR

THE OFFICE OF

Above Mt. Suribachi, looking north, Iwo Jima, D-2 Day, 17 February 1945.



Above Mt. Suribachi, looking north, Iwo Jima, D-2 Day, 17 February 1945.



FEB 2 1945

NO. 10000000000000000000

U. S. S. MAKIN ISLAND

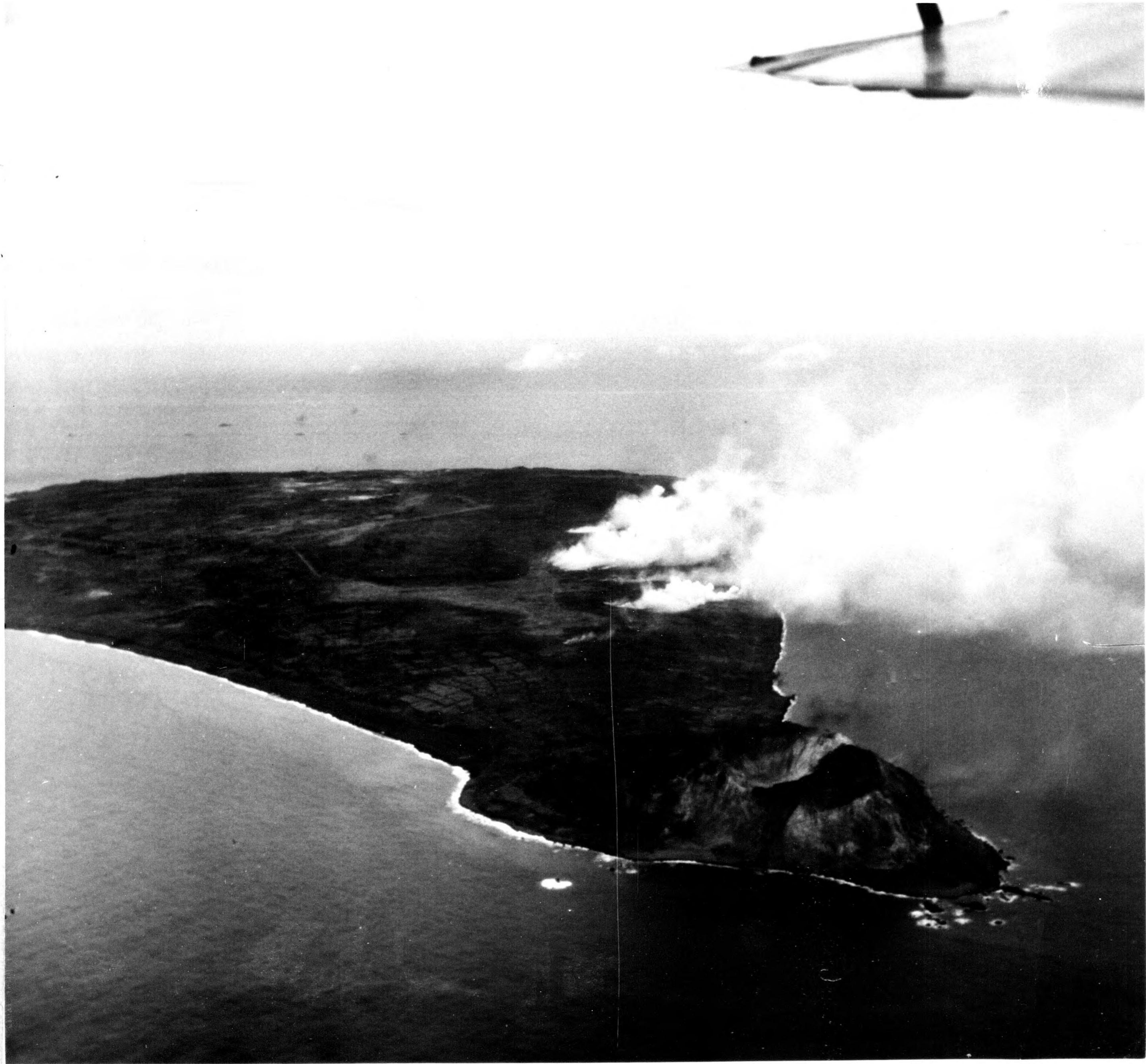
DATE

TIME

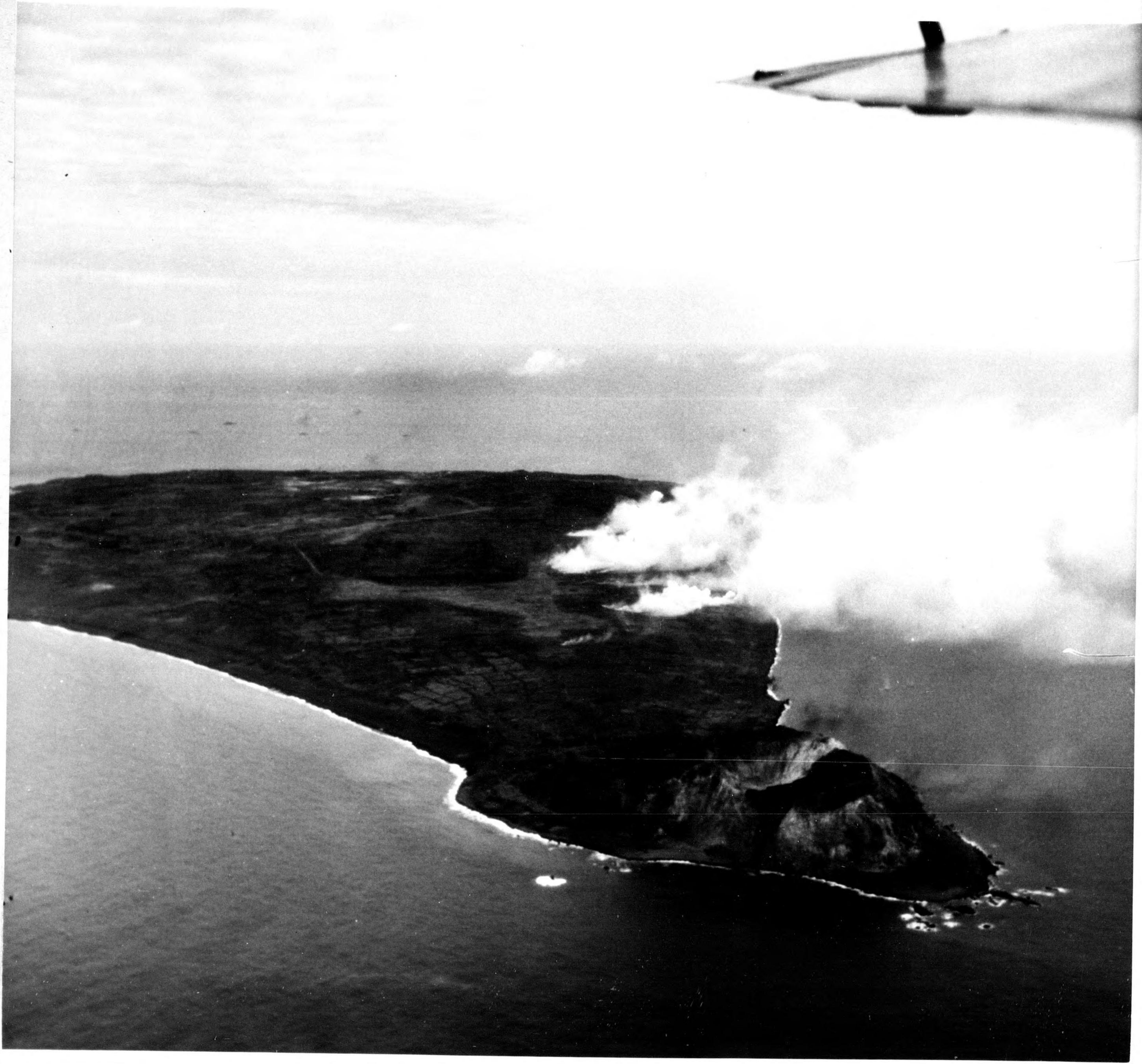
Handwritten notes in cursive script, including "10000000000000000000", "10000000000000000000", and "10000000000000000000".

OFFICE OF THE
DIRECTOR
BUREAU OF
NAVIGATION
WASHINGTON, D. C.

Iwo from the south west -- D-2 Day



Iwo from the south west - D-2 Day



Two fins looking E-N
Lens $6\frac{3}{8}$ " alt about 2,000'
Local time about 11:00
P-2

U.S. DEPARTMENT OF COMMERCE
BUREAU OF OCEANOGRAPHY
WASHINGTON, D. C.

Iwo Jima - south east beaches - 0845 19 February 1945 H hour less fifteen minutes. Heavy naval barrage. Landing craft approaching beaches



Iwo Jima - south east beaches - 0845 19 February 1945 H hour less fifteen minutes. Heavy naval barrage. Landing craft approaching beaches



FEB 19 1945

NO..... DATE

UNIT.....
.....

MADE FOR.....

SUBJECT.....
.....
.....
.....

Eight minutes before H-hour (0900), 19 February 1945.



Eight minutes before H-hour (0900), 19 February 1945.



FEB 19 1945

NO. DATE

UNIT U. S. S. MAKIN ISLAND

MADE FOR

SUBJECT

OFFICIAL PHOTOGRAPH
NOT TO BE USED FOR PUBLICATION
BY ORDER OF
THE CHIEF OF THE BUREAU
OF AERONAUTICS

Support ships firing. Landing craft underway



Support ships firing. Landing craft underway



FEB 19 1945

NO. DATE

UNIT U. S. S. MAKIN ISLAND

MADE FOR

SUBJECT *Landing on Iwo Jima*
Lens 8 1/4
Alt about 1,500'

OFFICIAL PHOTOGRAPH
NOT FOR PUBLICATION
THE U. S. GOVERNMENT
OF ALBUQUERQUE

Five minutes before H-hour, 19 February 1945. Landing craft close to beach



Five minutes before H-hour, 19 February 1945. Landing craft close to beach



NO..... DATE *FEB 18 1944*

UNIT..... *U. S. S. MAKIN ISLAND*

MADE FOR.....

SUBJECT *Landing on Iwo Jima
Lens 6 3/8" Alt about 700'
Local time about 08:55*

OFFICIAL PHOTOGRAPH
NOT TO BE USED FOR PUBLICATION
EXCEPT BY ORDER OF
THE CHIEF OF THE BUREAU
OF AERONAUTICS

0900 -- H-Hour Dog Day 19 February 1945. Marines landing on Iwo Jima --
south east beaches



0900 -- H-Hour Dog Day 19 February 1945. Marines landing on Iwo Jima --
south east beaches



SEP 16 1945

2. 1945

Landing on two Jimia
hens 8"
Alt about 500'

0908 - Dog Day 19 February 1945. First wave on the beach. Second
approaching Suribachi upper left.



0908 - Dog Day 19 February 1945. First wave on the beach. Second
approaching Suribachi upper left.



FEB 19 1945

NO.....DATE.....

U. S. S. MAKIN ISLAND

UNIT.....

MADE FOR.....

SUBJECT

Landing on two jima
Leus 8 1/4"
Alt about 500'

0923 - Dog Day 19 February 1945. Landing craft and heavy ships



0923 - Dog Day 19 February 1945. Landing craft and heavy ships

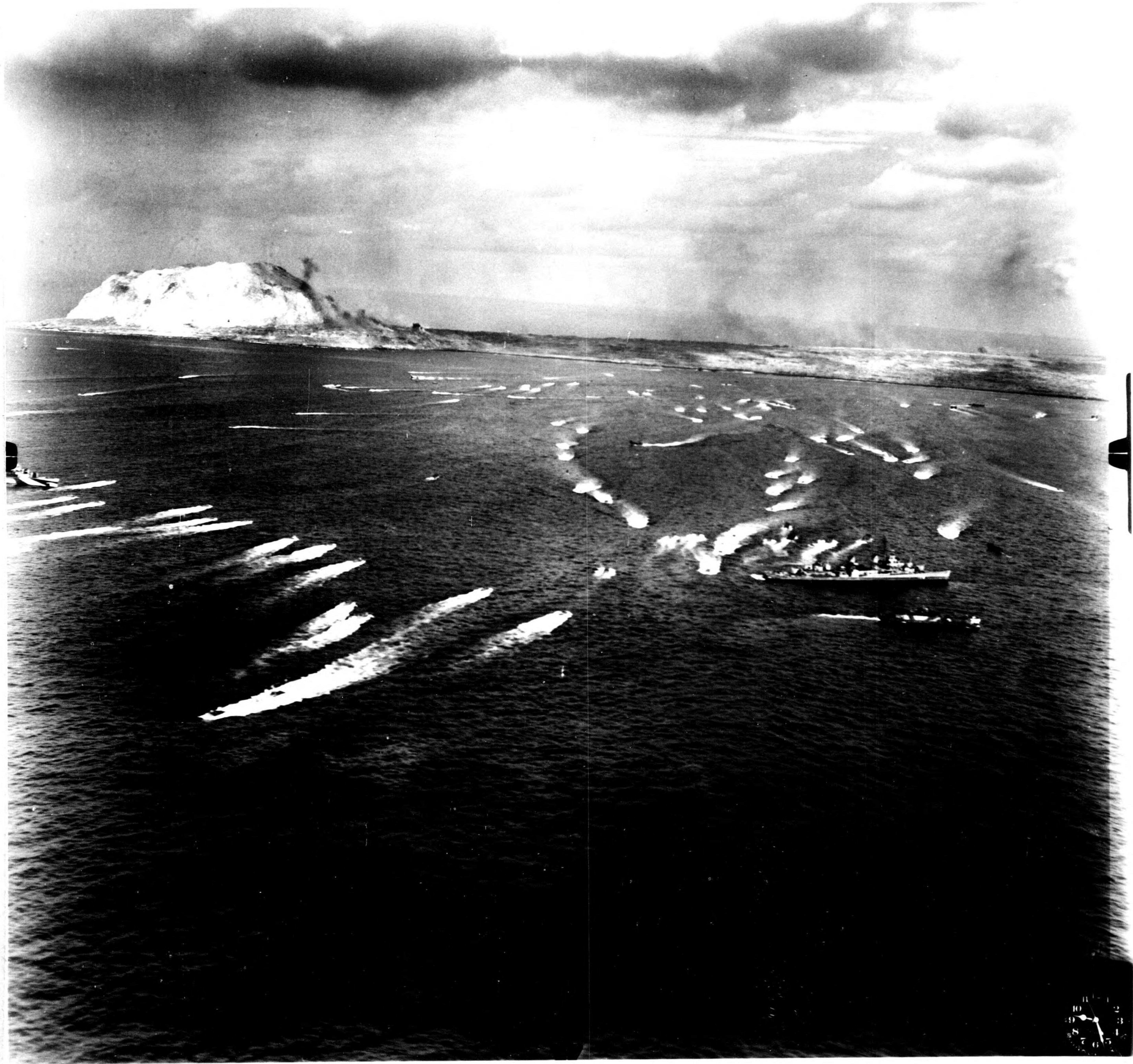


U.S. S. MANTON BRAND

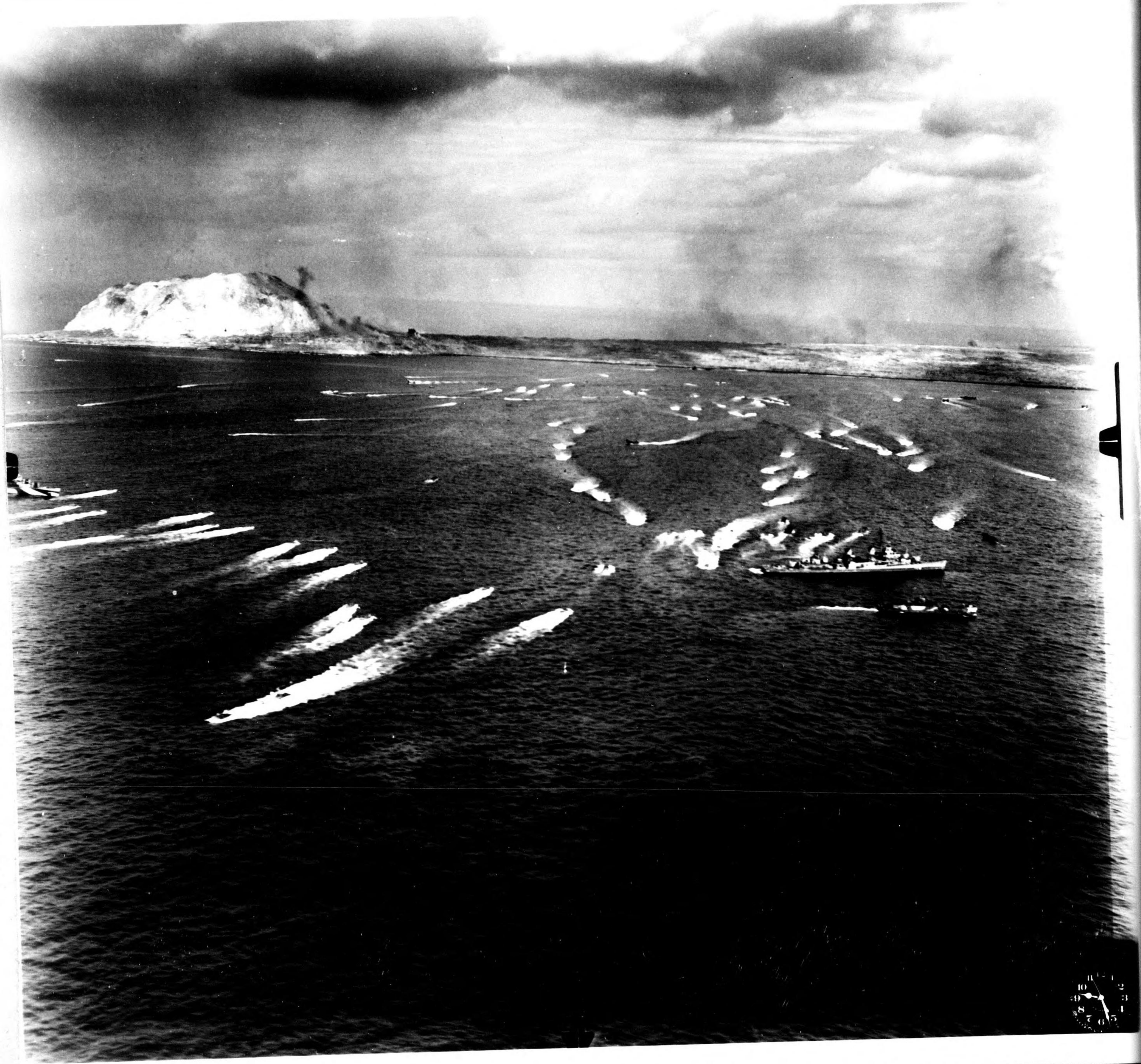
Landing on Iwo Jima
Lens 8 1/4"
All about 500'

OFFICE OF THE
CHIEF OF BUREAU
OF AERONAUTICS
THE OFFICE OF THE CHIEF
OF AERONAUTICS

0927 - Landing beach Iwo Jima Dog Day 19 February 1945



0927 -- Landing beach Iwo Jima Dog Day 19 February 1945



NO. DATE FEB 19 1945

UNIT U. S. S. MAKIN ISLAND

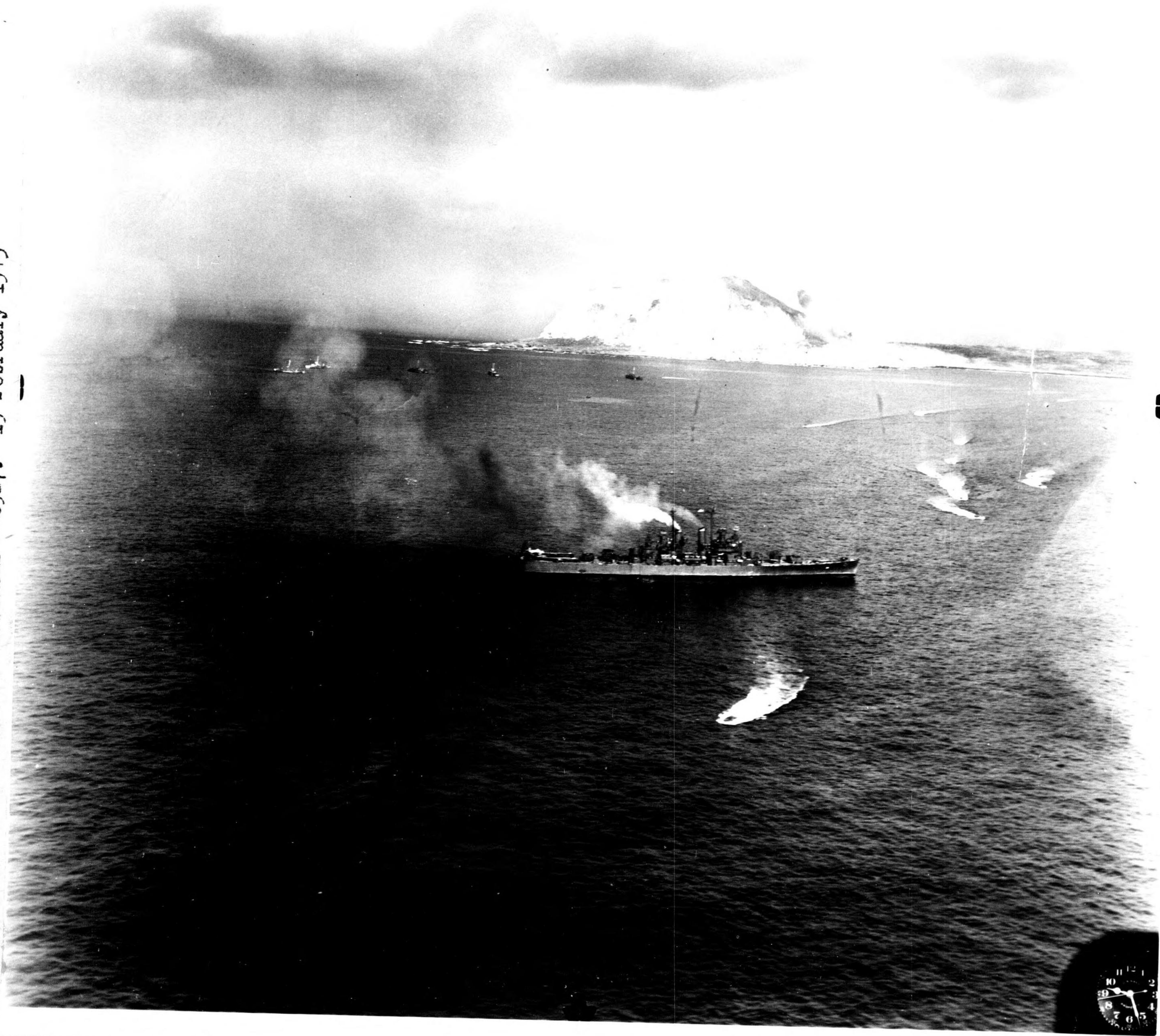
MADE FOR

SUBJECT

RECEIVED
COMMUNICATIONS SECTION
FEB 20 1945

U. S. S. MAKIN ISLAND
COMMUNICATIONS SECTION

East of Suribachi - 0927. 19 February 1945



East of Suribachi - 0927. 19 February 1945



FEB 19 1945

I.O. DATE

UNIT U. S. S. MAKIN ISLAND

MADE FOR

SUBJECT *Landing gear*

.....
.....
.....

OFFICIAL PHOTOGRAPH
NO. 12 87

East of Suribachi - 0927, 19 February 1945. Landing craft approaching and returning from beach.



East of Suribachi - 0927, 19 February 1945. Landing craft approaching and returning from beach.



NO..... DATE FEB 19 1945
UNIT U. S. S. MAKIN ISLAND

MADE FOR

SUBJECT

OFFICIAL PHOTOGRAPH
NOT TO BE USED FOR PUBLICITY
BY ORDER OF
THE CHIEF OF THE BUREAU
OF AERONAUTICS

0933 - Evasive action Dog Day, 19 February 1945



0933 - Evasive action Dog Day, 19 February 1945



NO. DATE FEB 19 1945

UNIT U. S. S. MAKIN ISLAND

MADE FOR

SUBJECT *Landing on Iwo Jima*
lens 8 1/4"

Alt. about 1500'

OFFICIAL PHOTOGRAPH
NOT TO BE USED FOR PUBLICATION
BY ORDER OF
THE CHIEF OF THE BUREAU
OF AERONAUTICS

0938 - Evasive Action



0938 - Evasive Action



0938 - Evasive Action



0945 -- Beach scene 19 February 1945



1015 - Landings



U.S.S. MAKIN ISLAND - Flight Operations 28 February 1945. West of Iwo Jima



SE Beach at Iwo - 28 February 1945



Land craft and tracked vehicles landing beach Iwo Jima, 28 February 1945



Supply ships off Iwo Jima 28 February 1945 (D-9)



Unloading - 28 February 1945



Iwo Beach Scene. Looking east. 28 February 1945



Graveyard



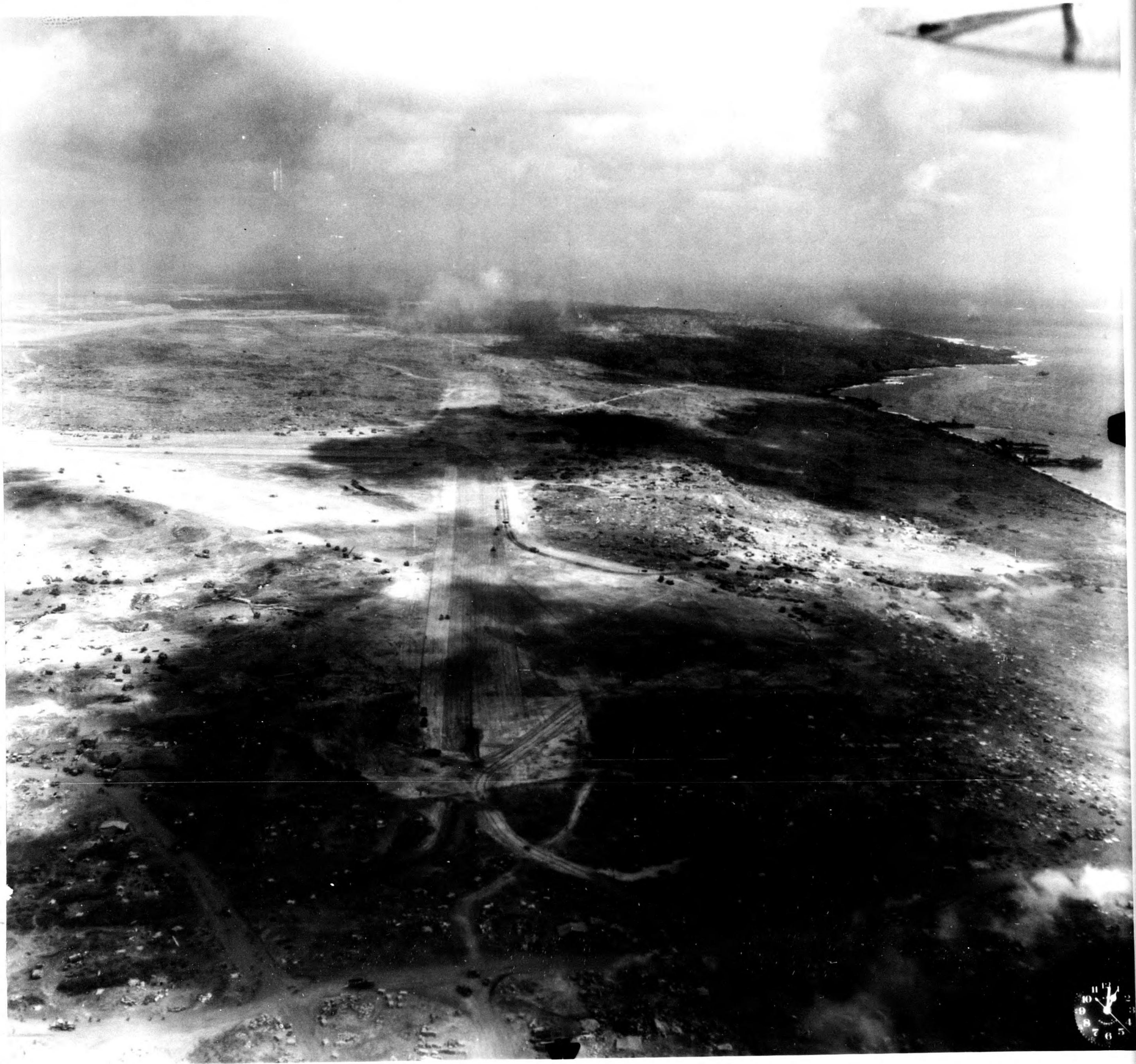
Road leading up from south eastern beaches to No. 1 Airstrip - Iwo Jima
28 February 1945



No. 1 Airstrip Iwo Jima - looking NE. 28 February 1945



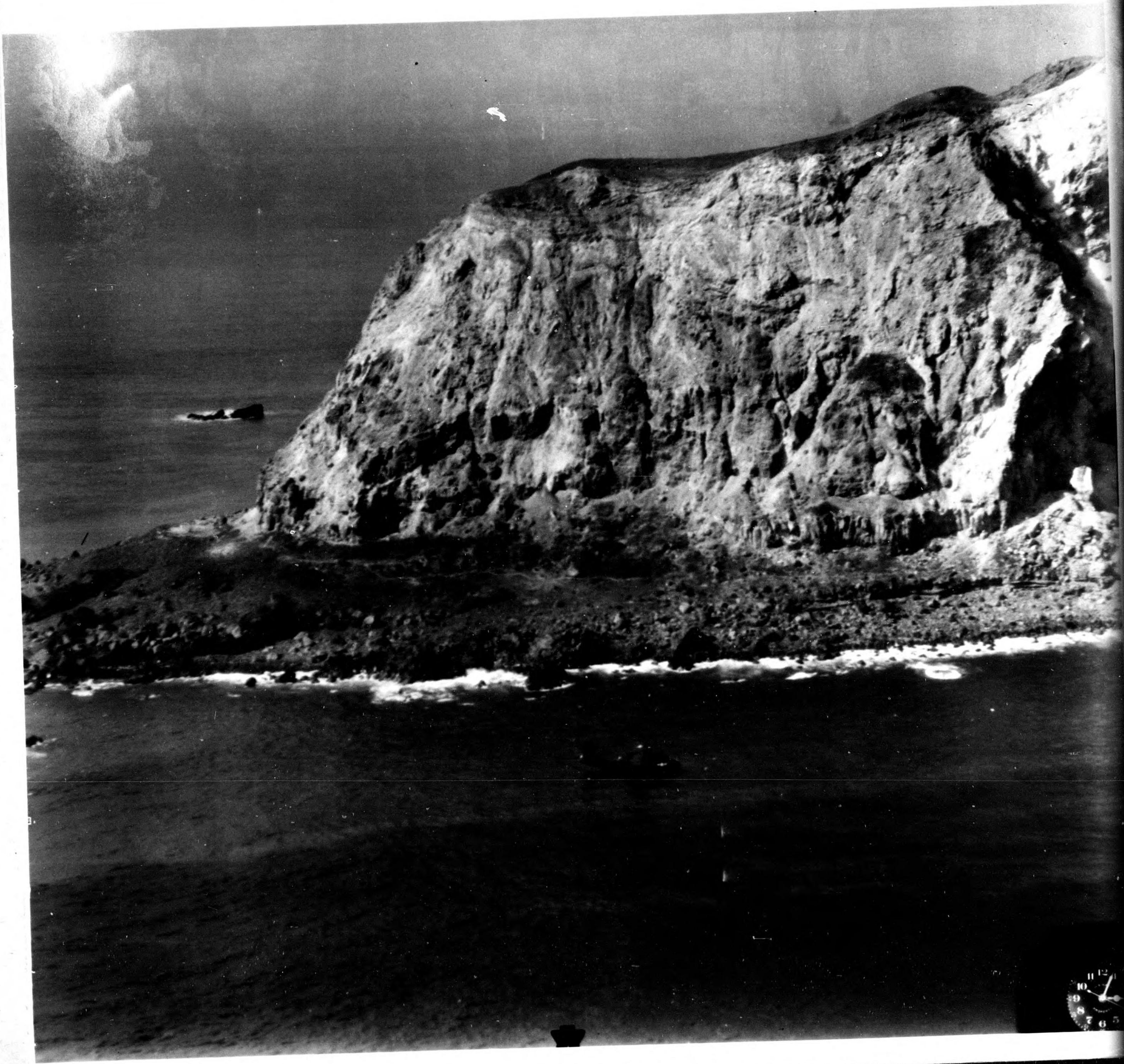
NE view of No. 1 Airstrip and landing beaches



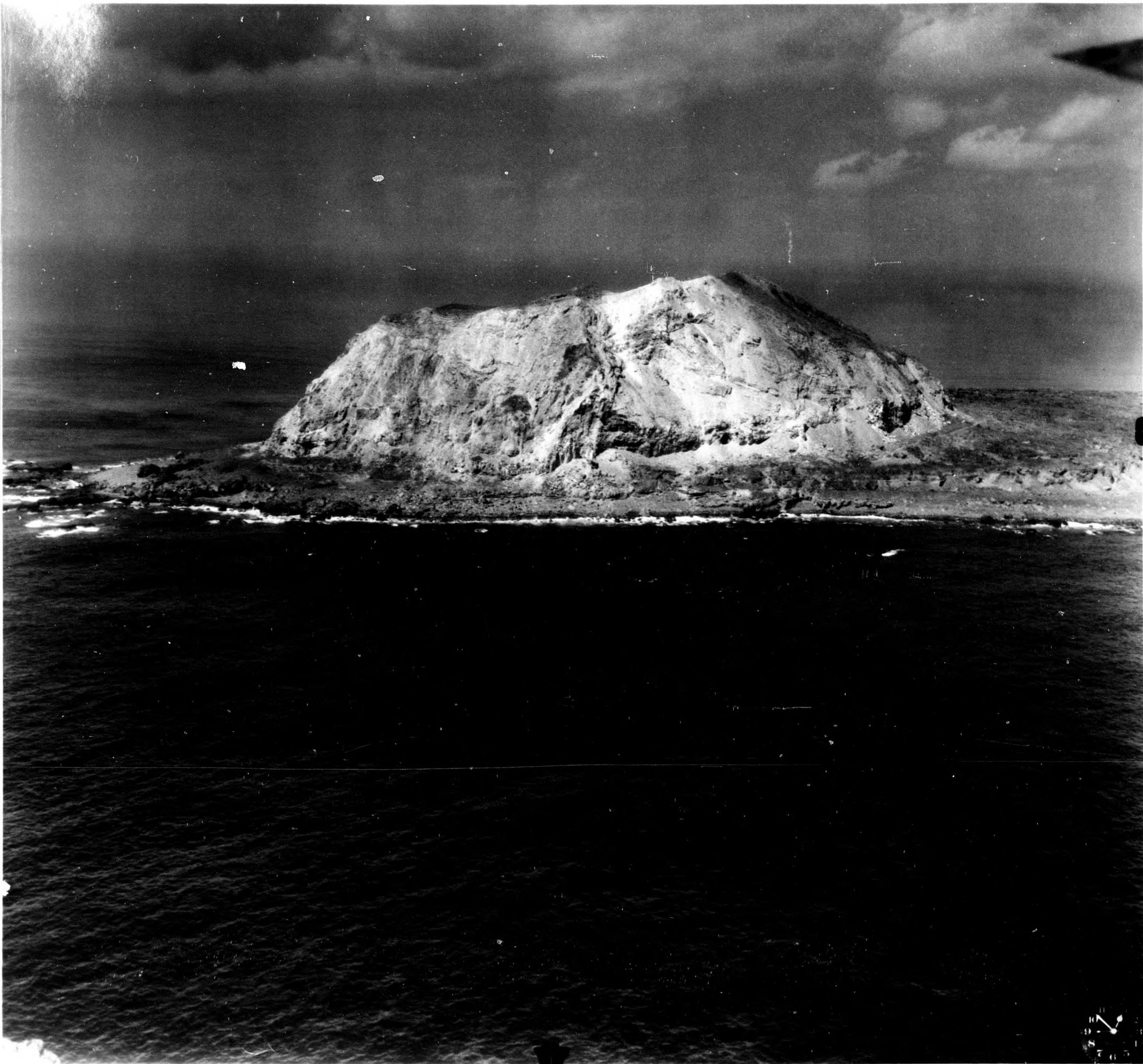
Suribachi from the SW, from altitude 1500 feet.



East face of Suribachi. PBM in foreground.



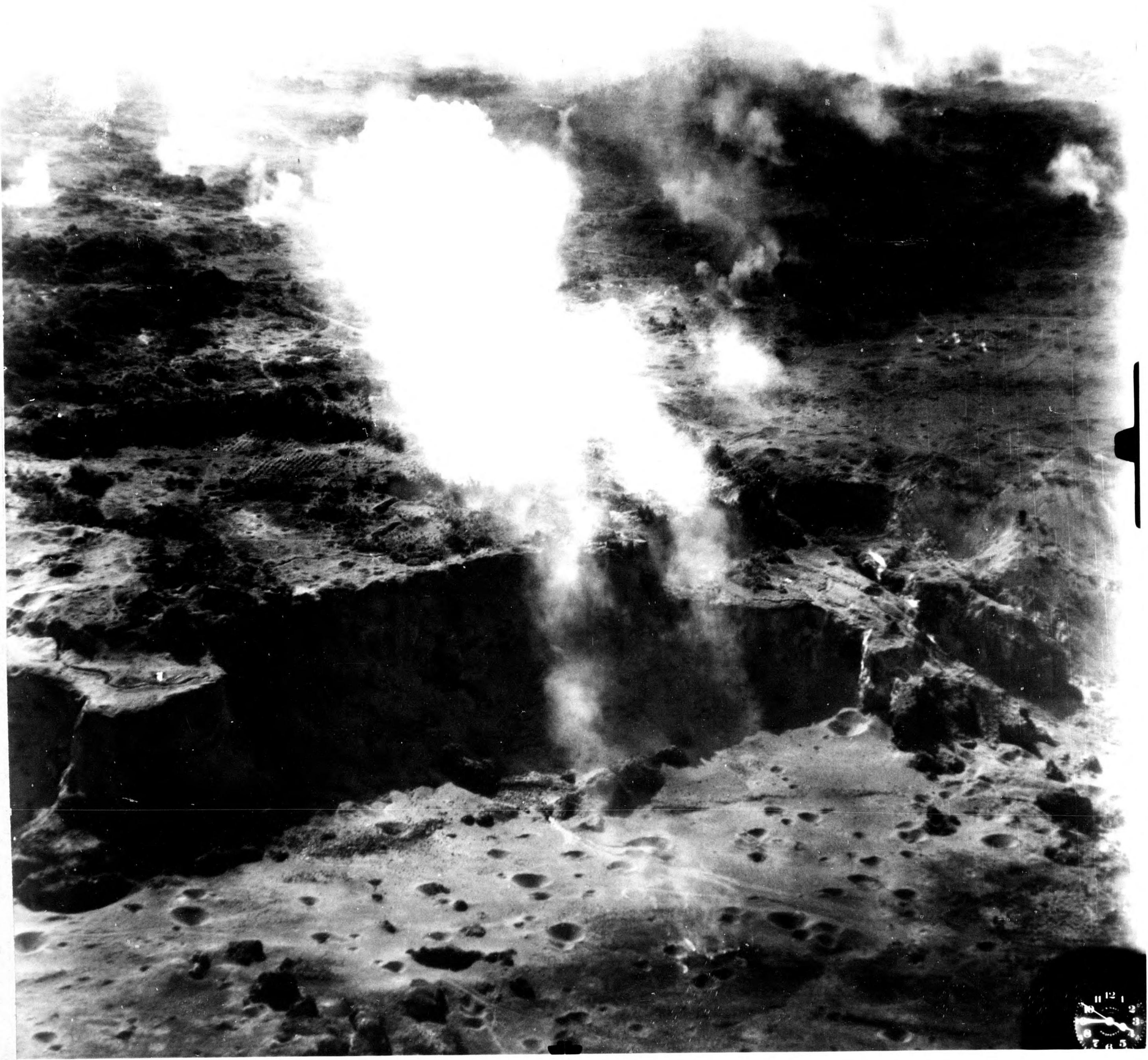
Suribachi



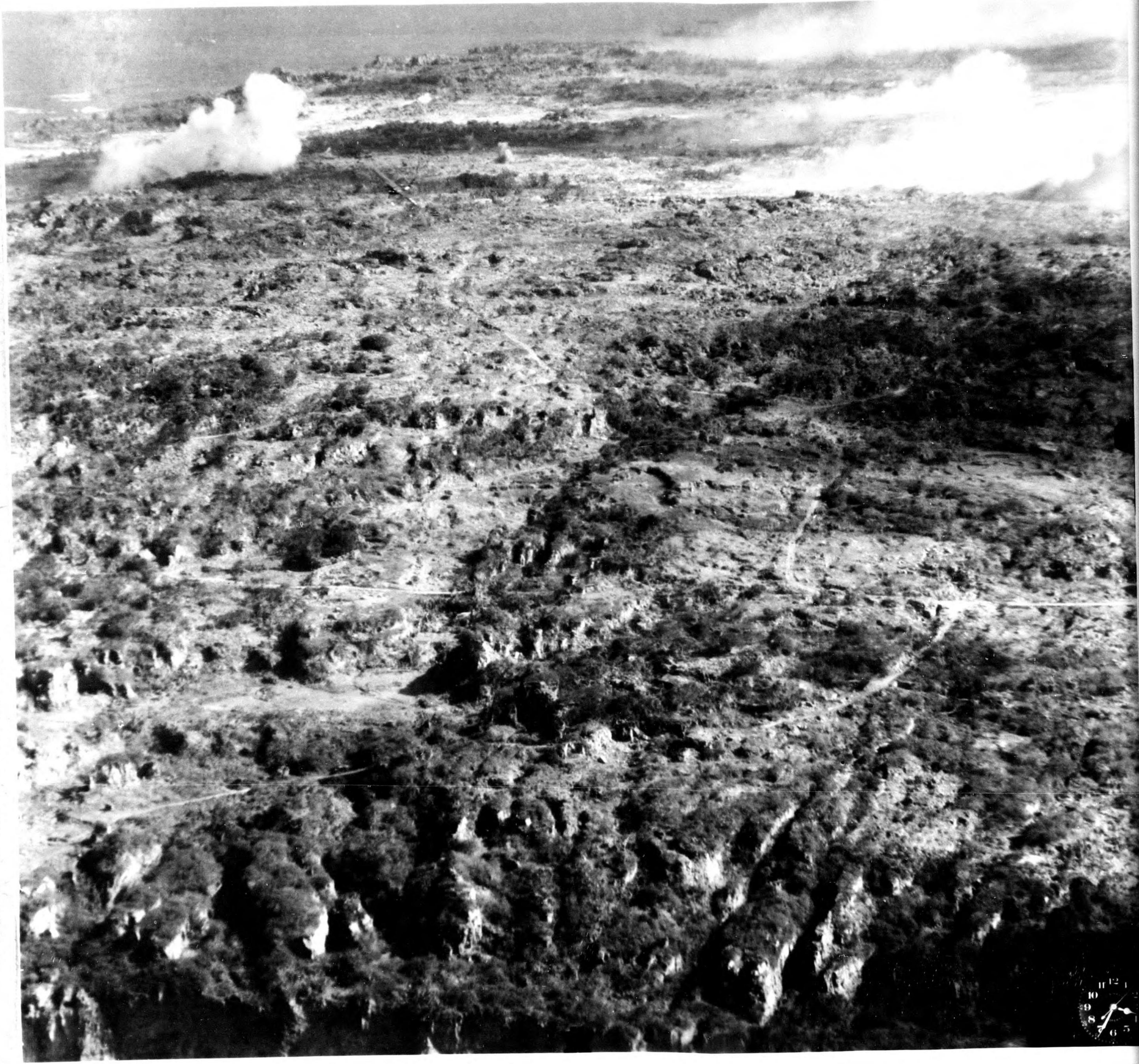
Unloading



Beginning of the "badlands" -- fortified redge on north east coast of Iwo
Jima. Bombing and strafing run in background. 28 February 1945



Terrain in northwestern sector of Iwo. Taken from 1,000 feet altitude.



Rocket-assisted PBM takeoff. East of Iwo Jima



