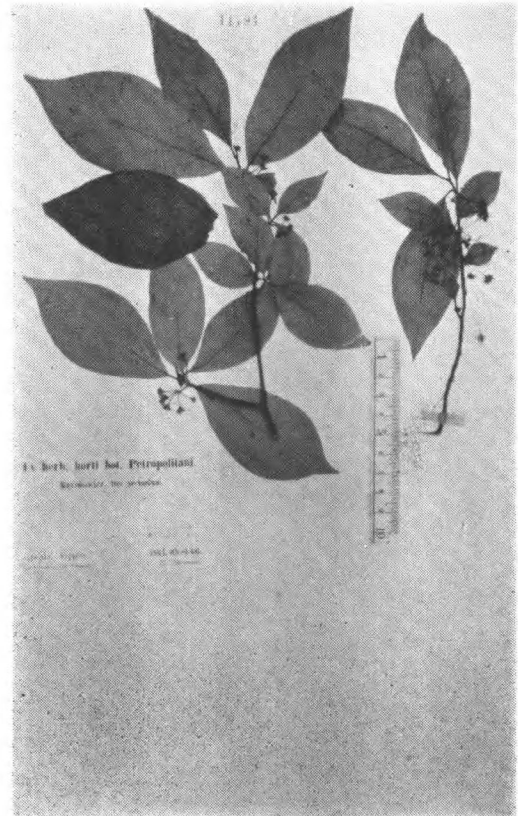
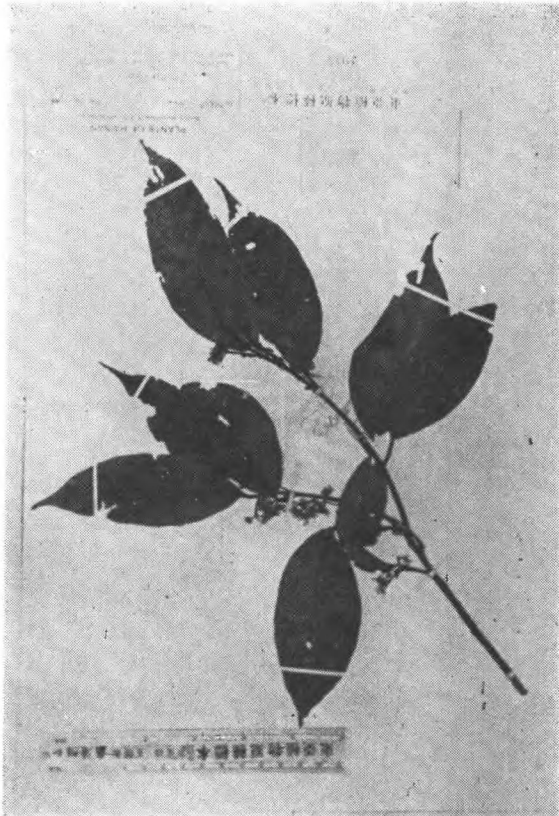




Lindera megaphylla Hemsl.
Henry 7618 in fr. (type.) 湖北



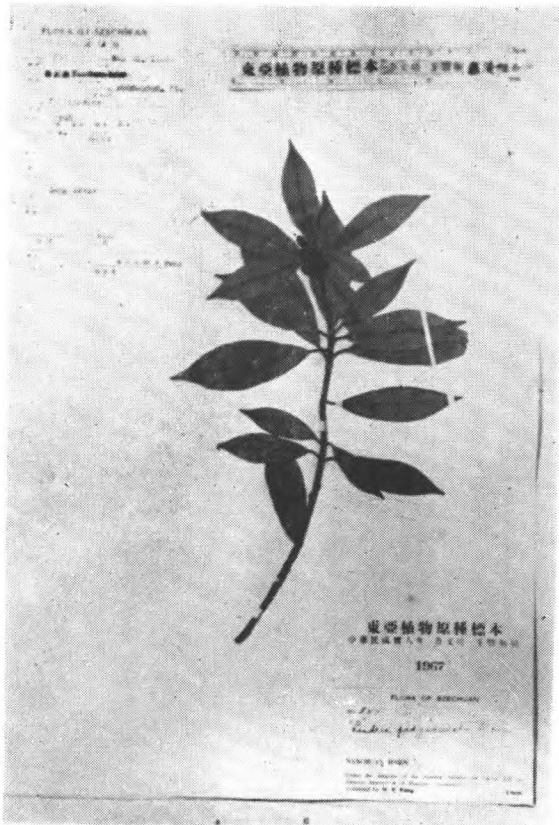
Lindera membranacea Maxim.
Tchonoski (type.) 日本



Lindera Metcalfiana Allen
C. Wang 26163 (type) 海南



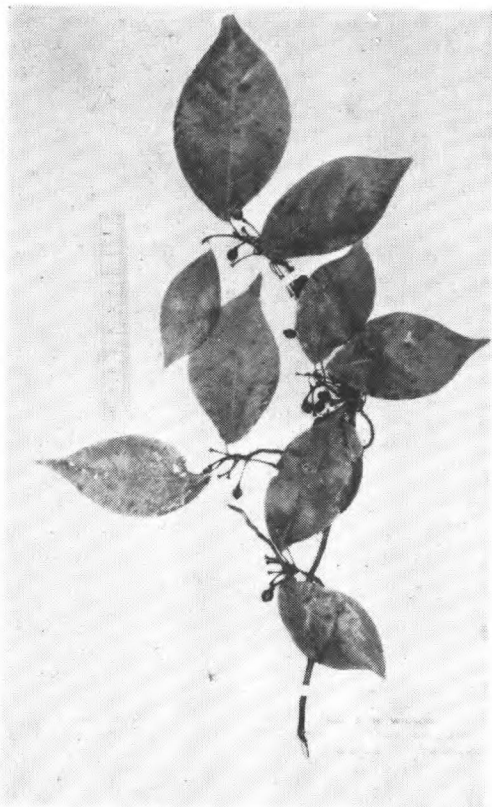
Lindera Nacusua (D. Don) Merr.
Wallich 2530. (isotype)



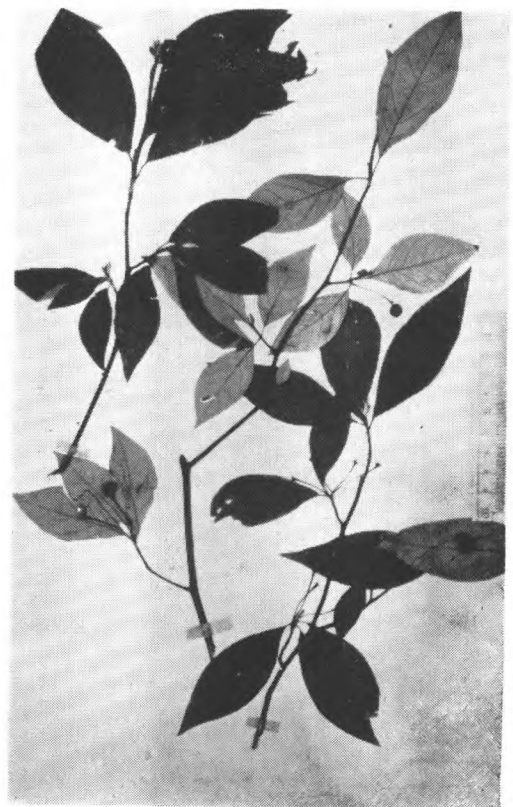
Lindera pedunculata Diels
Fang 855 (topotype.) 四川



Lindera Pratii Gamble
Wils. 3715 (isosyntype) Wa-shan.



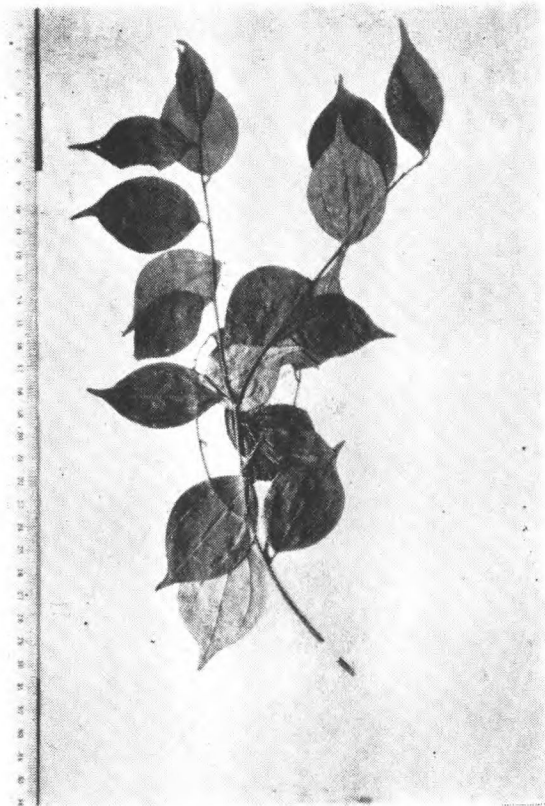
Lindera reflexa Hemsl.
Wils. (Veitch) 610a (type.) 湖北西部



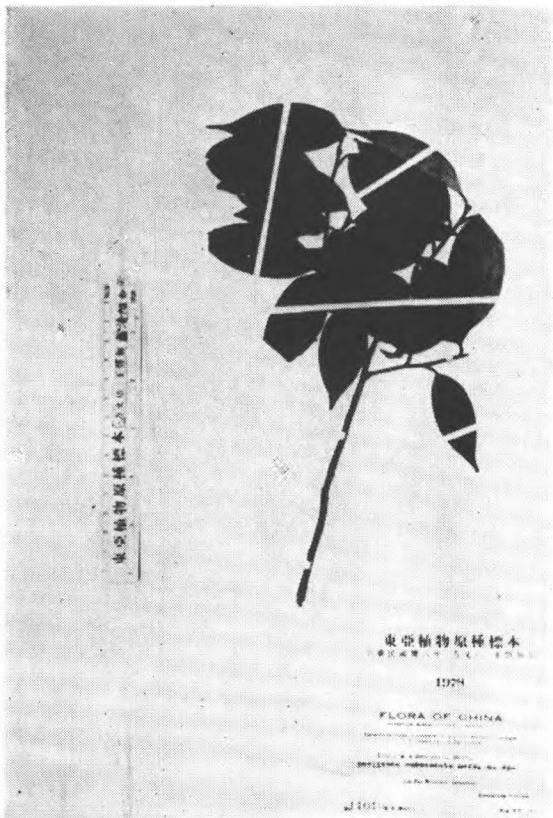
Lindera sericea Bl.
Ex herb. Hk. (type.)



Lindera sterrophylla Allen
Fang 2468 in fr. (type) 四川峨眉



Lindera strychnifolia (Sieb. et
Zucc.) Villar
Thbg's (type) 日本

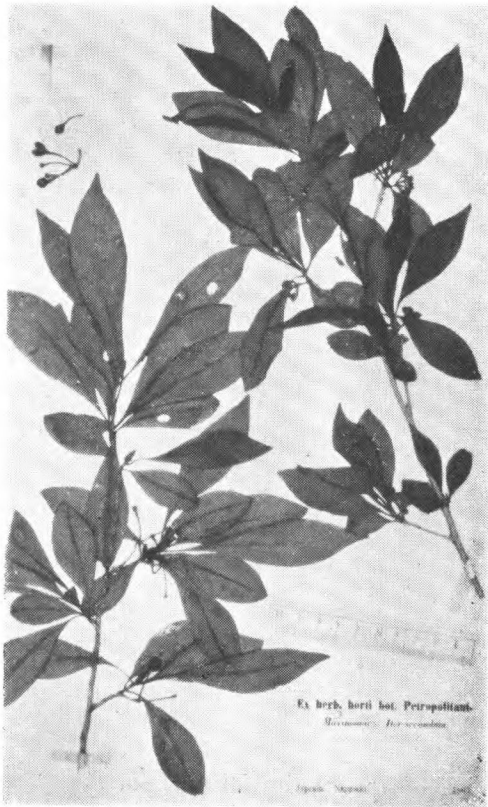


Lindera subcaudata (Merrill) Merrill
Merrill 11016 (type)



Lindera Thomsonii Allen
C. W. Wang 72528 (type) 云南

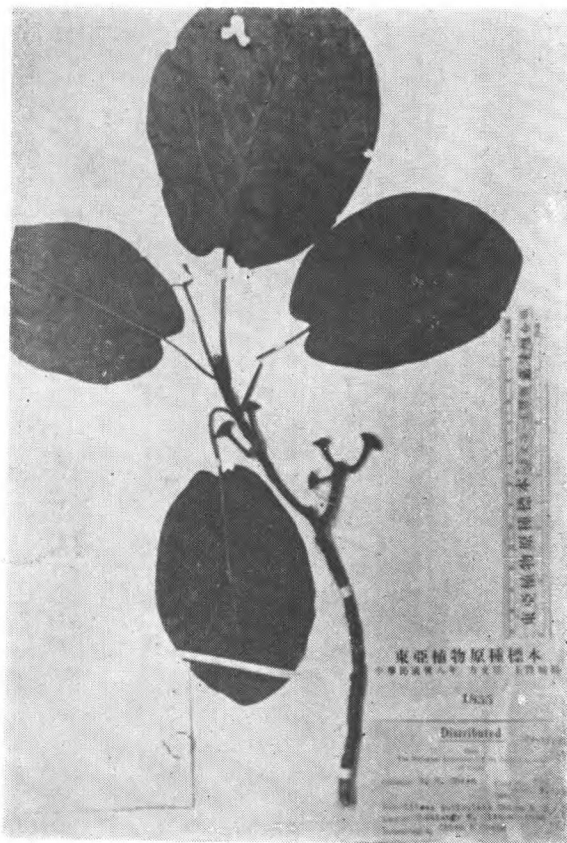
木薑子屬 *Litsea*



Lindera sericea Bl.
Maximowicz 1863 日本长崎



Litsea akoensis Hay.
G. Nakahara 无号 (iso-syntype.)
Tanashu, Ako, 台湾



Litsea auriculata Chien et Cheng
Chien 601 (type). 浙江



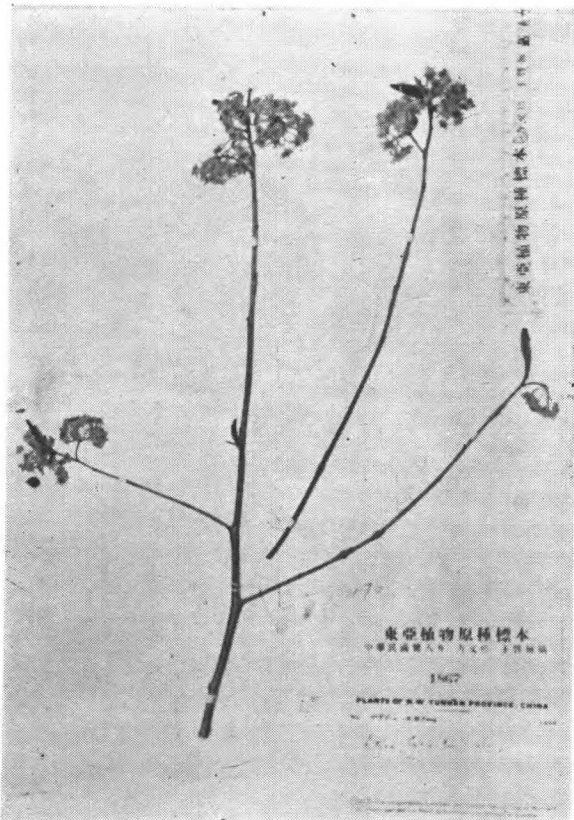
Litsea dolichocarpa Hay.
I. Tankaka et B. Hay 无号 (isosyntype.)
Mt. Arisan, Karapin, 台湾



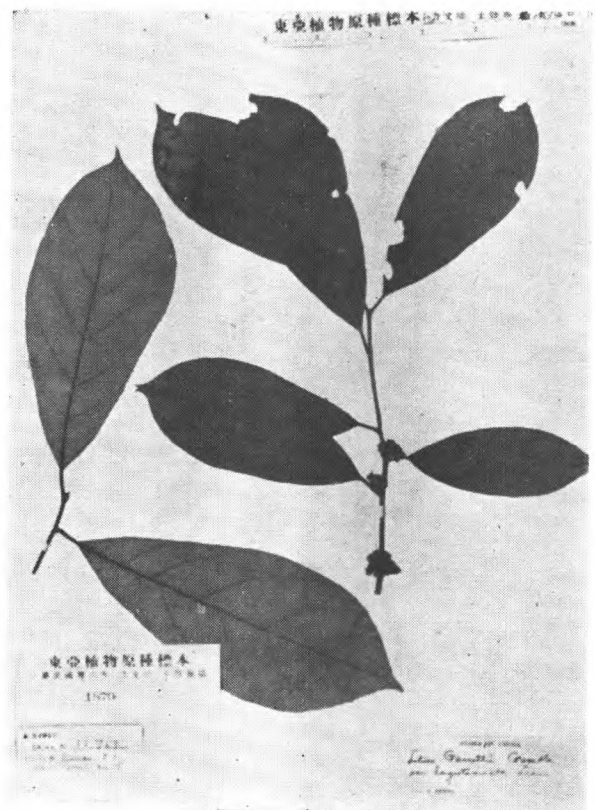
Litsea euosma W. W. Smith
Forr. 9333 (syntype.) 云南



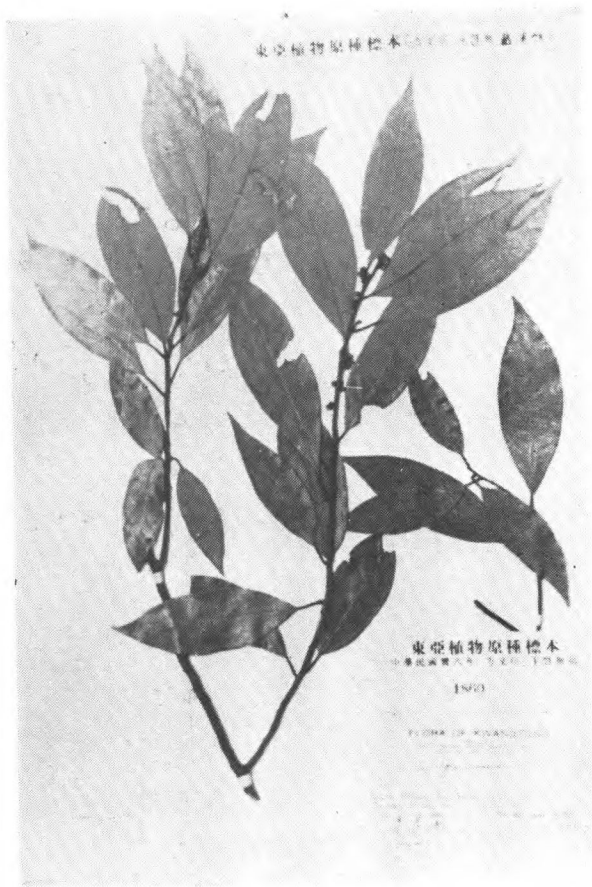
Litsea Faberi Hemsl.
Faber 341 (type.) 四川峨眉



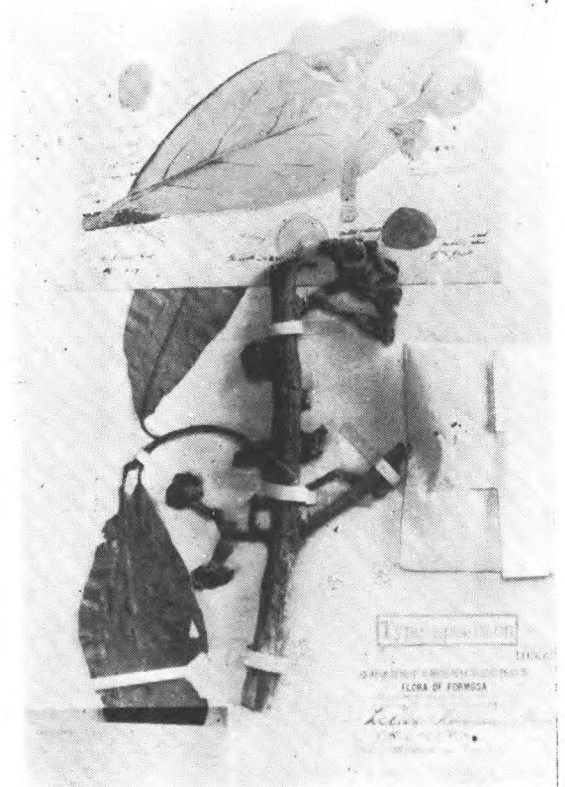
Litsea Forrestii Diels
Feng 496 Fl. 云南



Litsea Garrettii Gamble var. *longistaminata* Liou.
Henry 12769 (syntype.) 云南



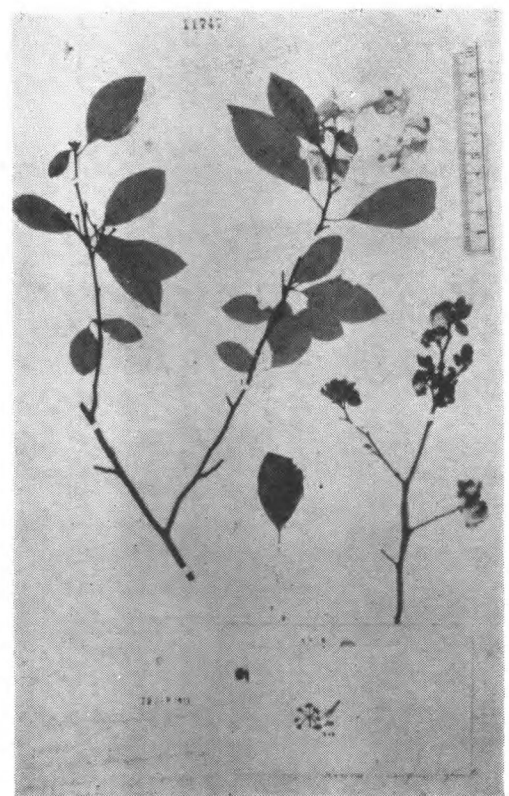
Litsea Greenmaniana Allen
Tsang 21102 (type.) 广东



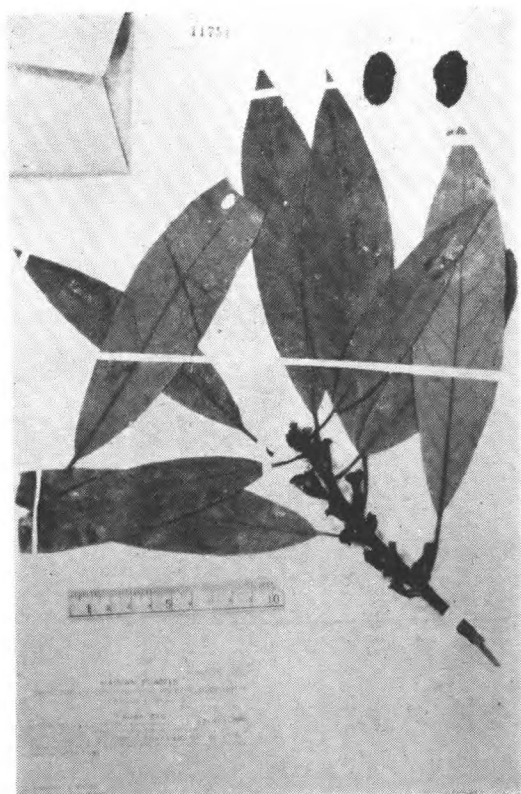
Litsea Kawakamii Hay.
T. Kawa Kami et S.Sasaki, 无号
(topotype). Kotosro, 台湾



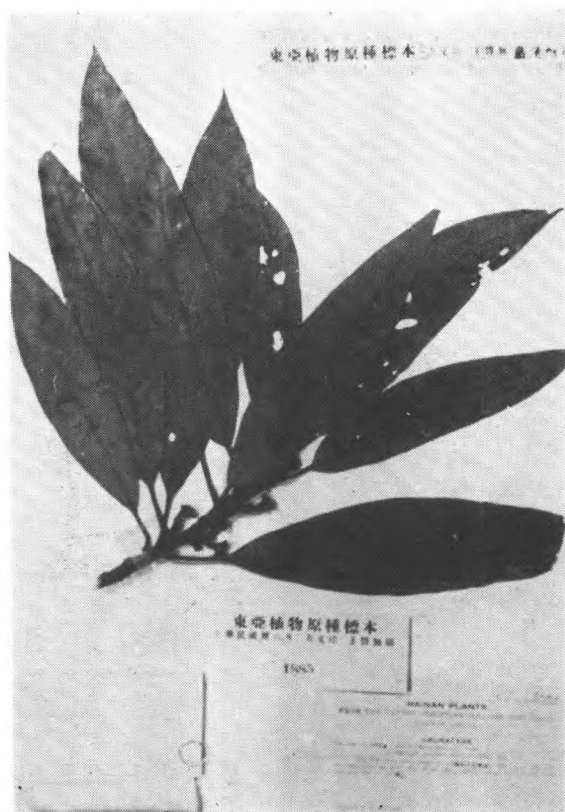
Litsea hupehana Hemsly.
Henry 6607 (syntype.) 湖北



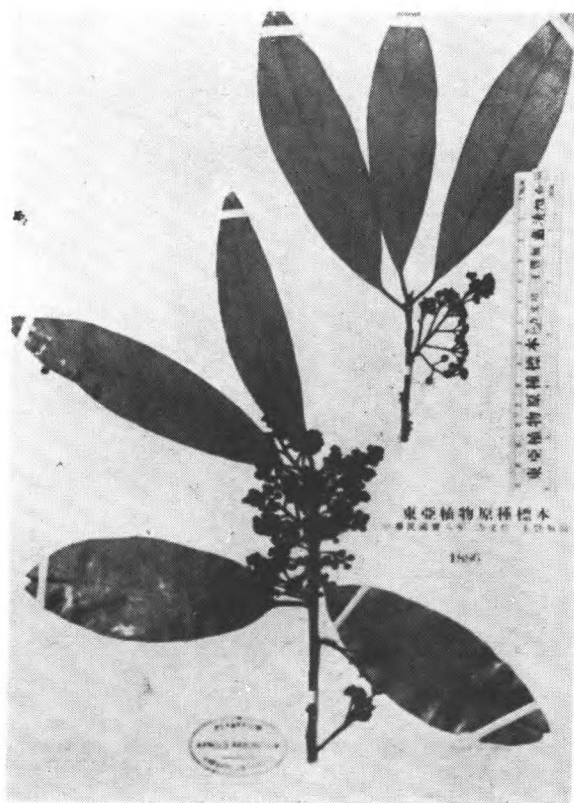
Litsea ichangensis Gamble
Wils. 298 (syntype.) 湖北宜昌



Litsea lancilimba Merr.
McClure 9353 (type). 海南五指岭



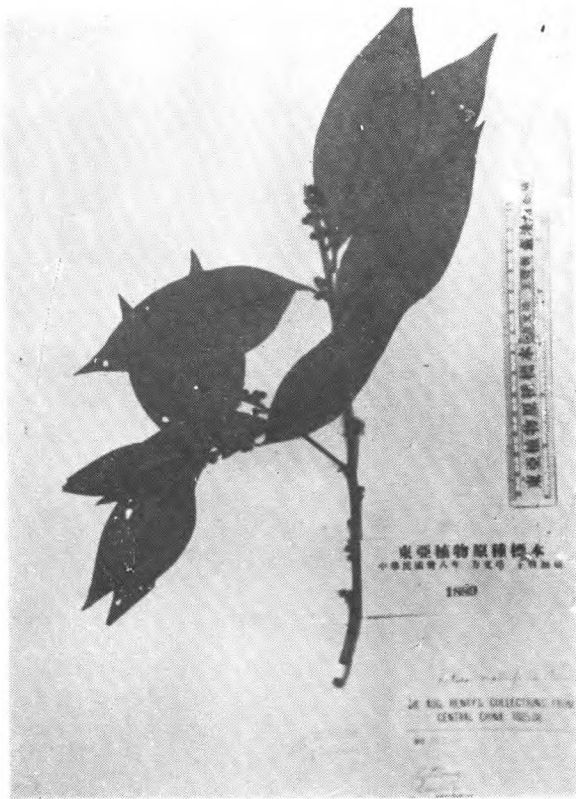
Litsea lancilimba Merr.
McClure 9353 (isotype.) 海南



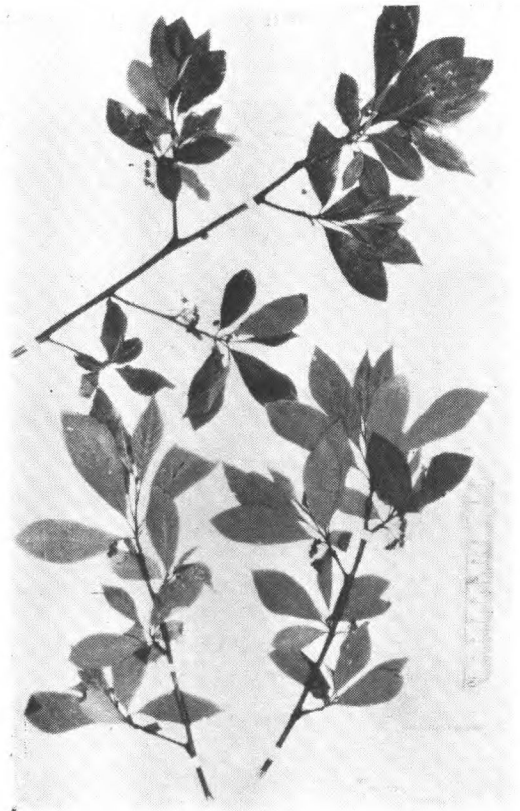
Litsea liuyingii Liou
Henry 12839 (isotype.)



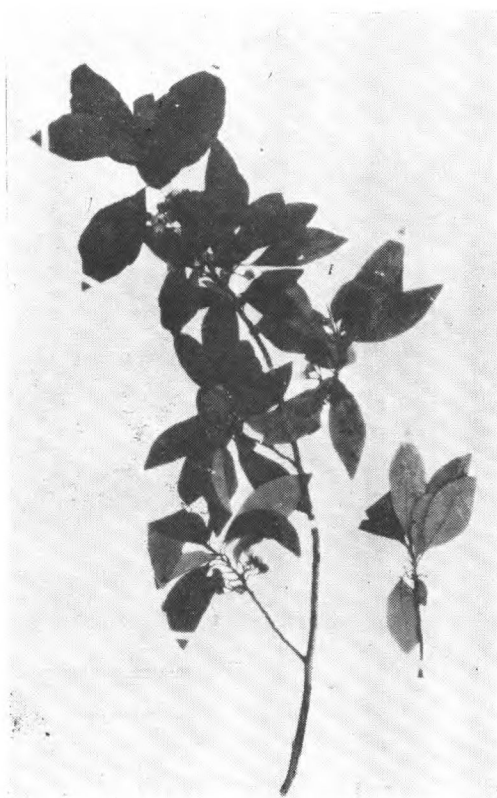
Litsea merrilliana Allen
T. S. Tseong 83503 (type.) 广西



Litsea mollifolia Chun
Henry 5035 (syntype). 湖北



Litsea pungens Hemsl.
Henry 6294, (syntype) 四川巫山



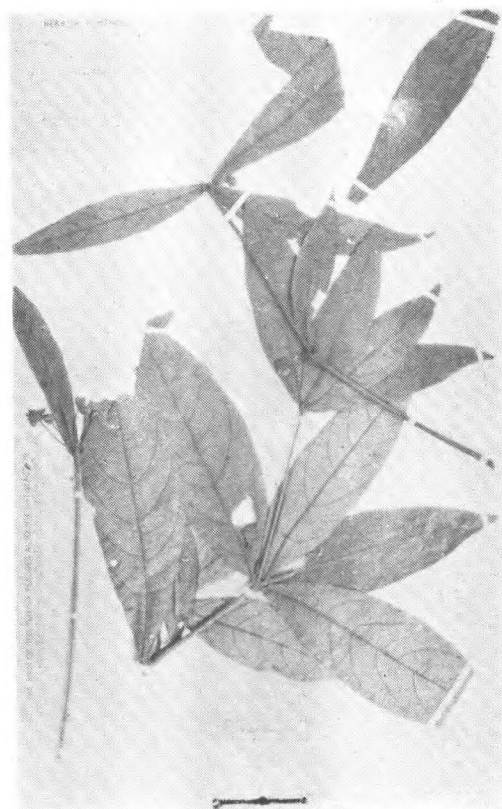
Litsea rubescens Lecte.
H.-M. 10176, (type) 昆明师宗



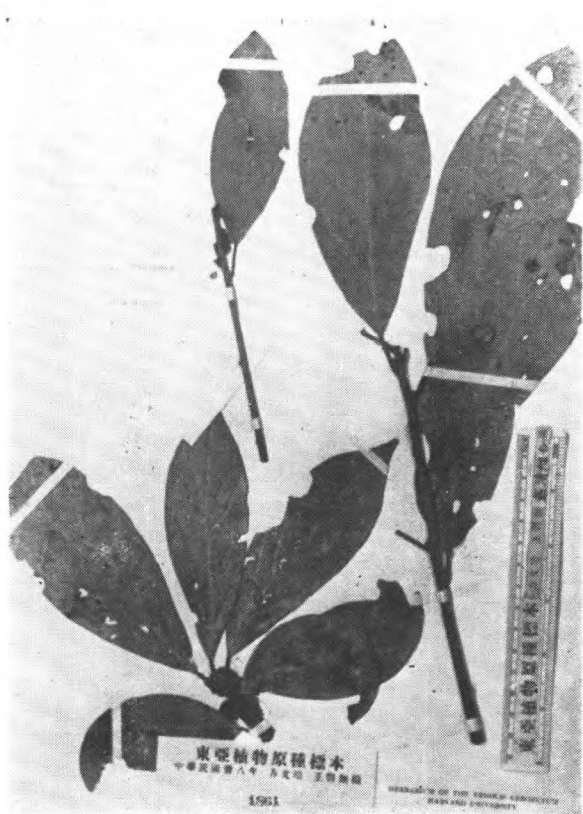
Litsea szechuanica Allen
Fan & Class 139 (type)



Litsea Veitchiana Gamble
Wils. 3672 fl. (type) 四川



Litsea Verticillata Vidal
B. C. Henry 22051, (type) 广州



Litsea wenshanensis Hu
Tsai 51726 (type) 云南

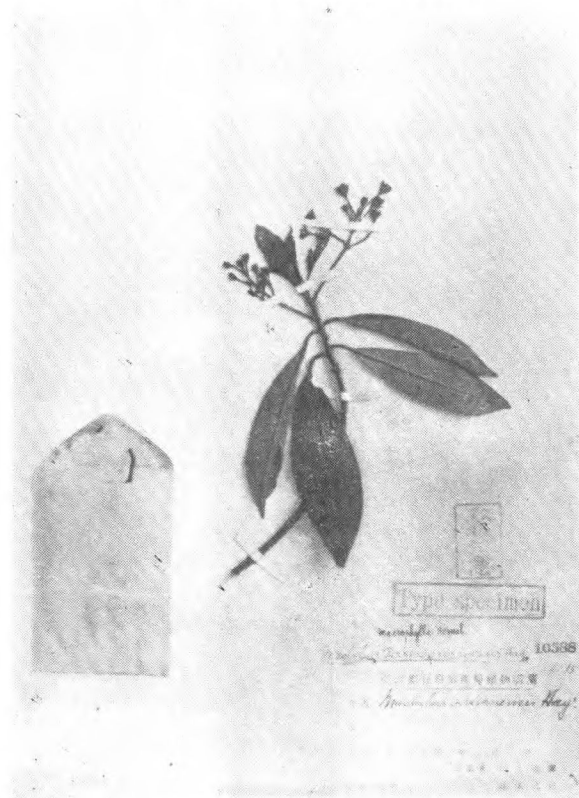


Litsea Wilsoni Gamble
Wils. 4422 fr. (type) 四川

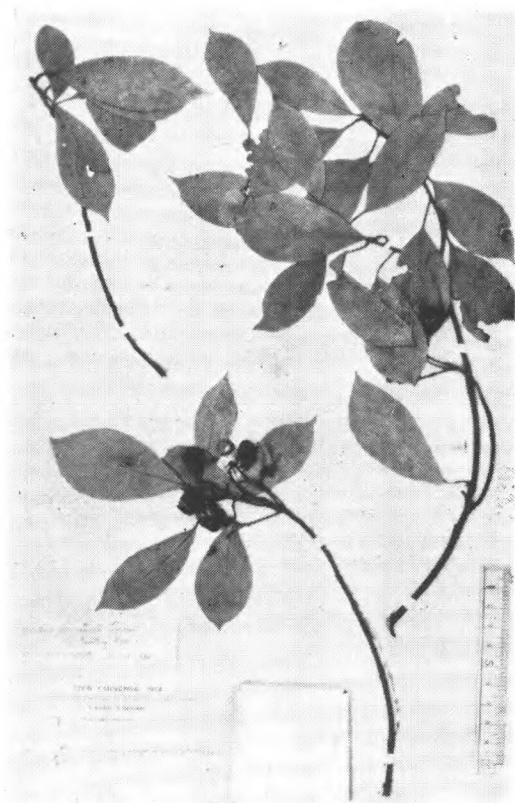
楨楠屬 *Machilus* Nees.



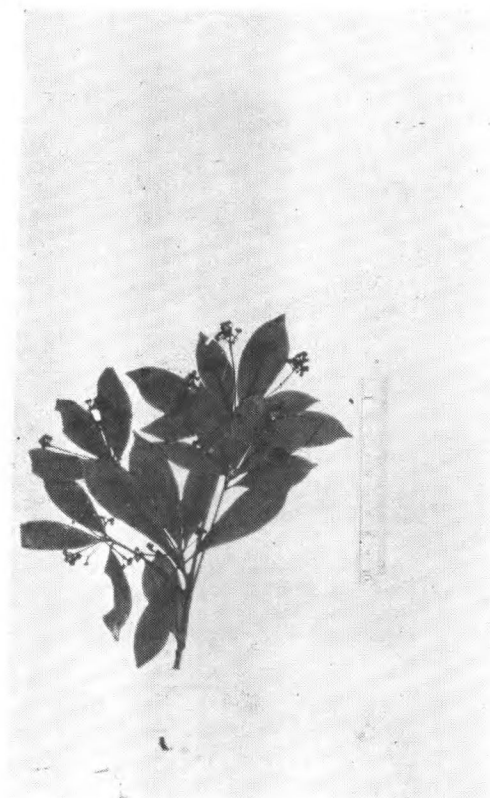
Litsea Wilsoni Gamble
Wils. 3694. 四川嘉定 (乐山) (type)



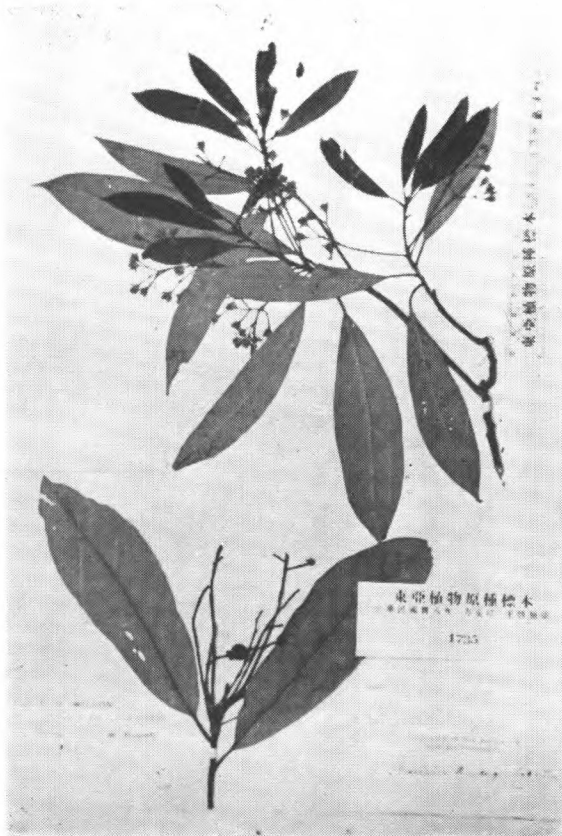
Machilus arisanensis (Hay.) Hay.
T. Kawakami et U. Mori 6215
(iso-syntype) Arisen, in Montibus
Morrison, 台湾



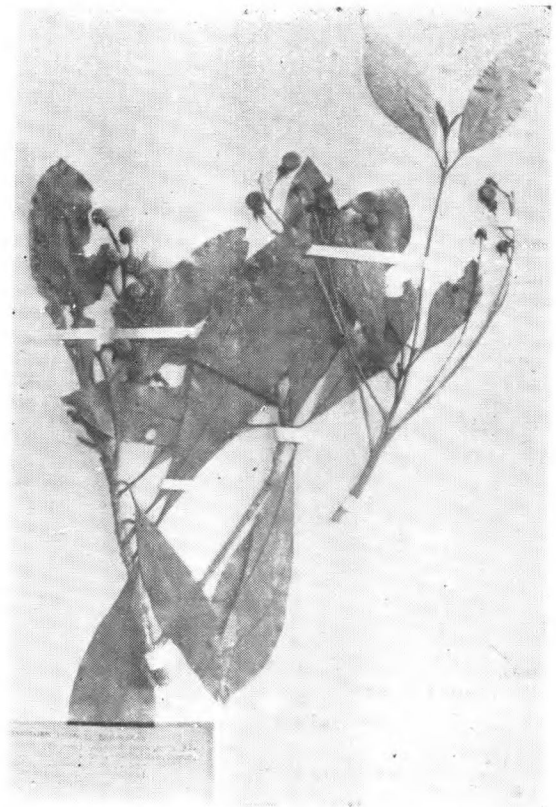
Machilus bracteata Lecte.
Schneider 2707. 松桂, 云南



Machilus breviflora (Bth.) Hemsl.
Wright 464 (type) 香港



Machilus ichangensis Rehd. et Wils.
Wils. 366 湖北 (type.)



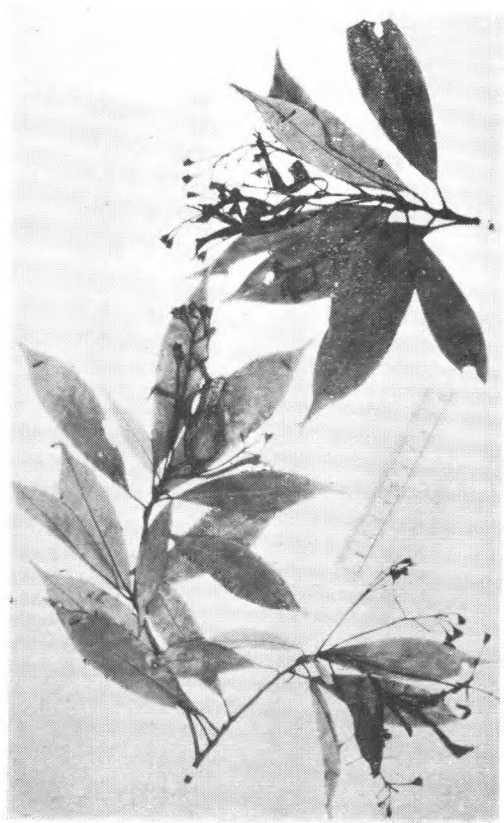
Machilus (Persea) kusanoi Hay
T. Kawakami et U. Mori 3457 (iso-syntype)
Randaizan, 台湾



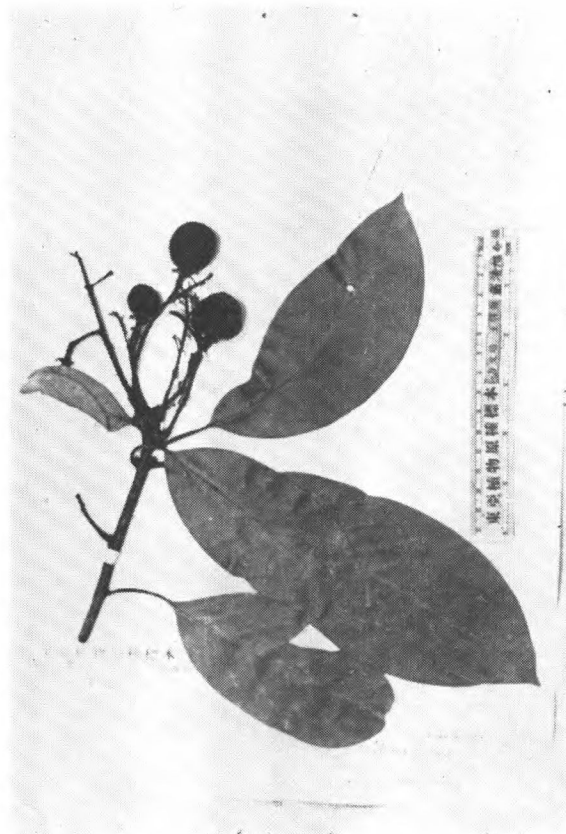
Machilus leptophylla H.-M.
T. Tso 1806 (isotype) 江苏



Machilus microcarpa Hemsl.
Henry 5615 (isotype) 四川



Machilus pauhoi Kanehira
Playfair (type of DC. Pl. t. 2538)
浙江宁波



Machilus robusta W. W. Sm.
Henry 10809 fr. (cotype) 中国

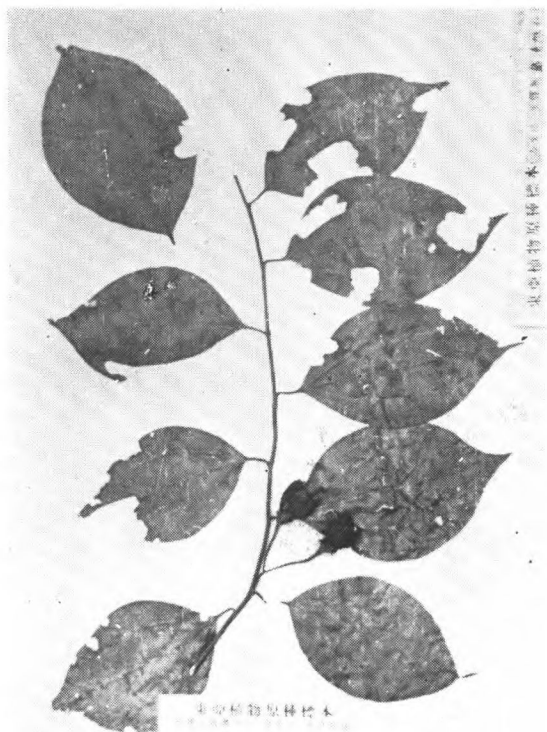


Macrilus shweliensis W. W. Sm.
Forr. 9624 (isotype) 云南

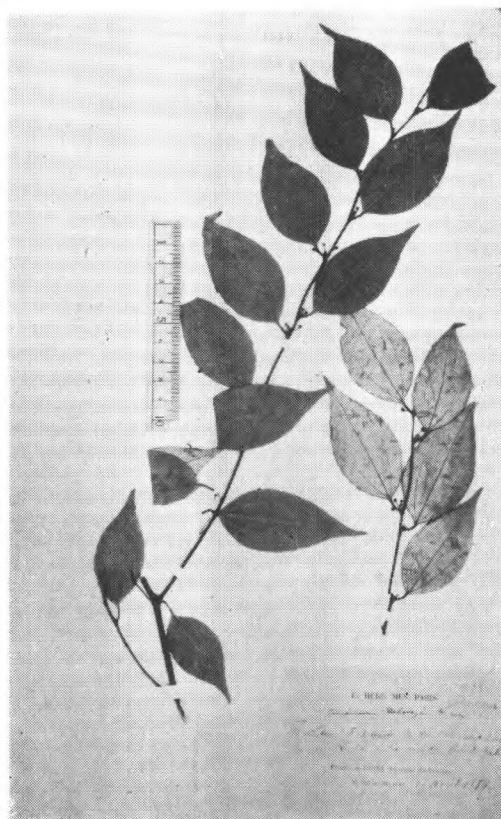


Machilus Thunbergii Sieb. et Zucc.
Thbg.'s (type) 日本

Neocinnamomum Liou



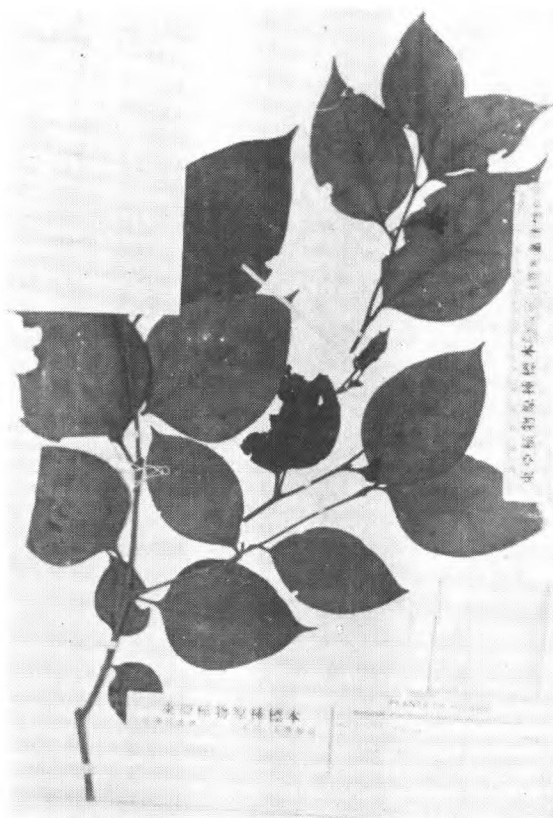
Neocinnamomum caudatum (Wallich)
Merr. (cotype)
Testa, Eastern Himalayas.



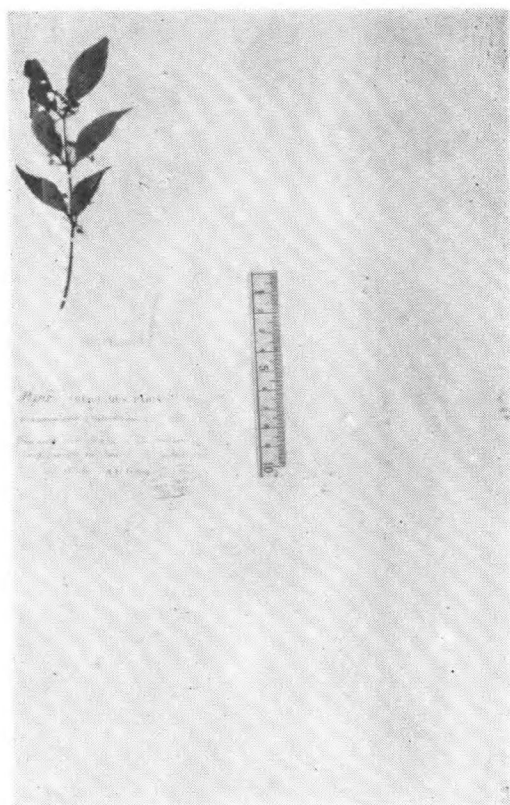
Neocinnamomum Delavayi (Lecomte)
Liou
Delavay (type) 云南大坪子



Neocinnamomum Delavayi var. *mekongense* (H.-M.) Allen
Henry 10769A (cotype.) 云南蒙自



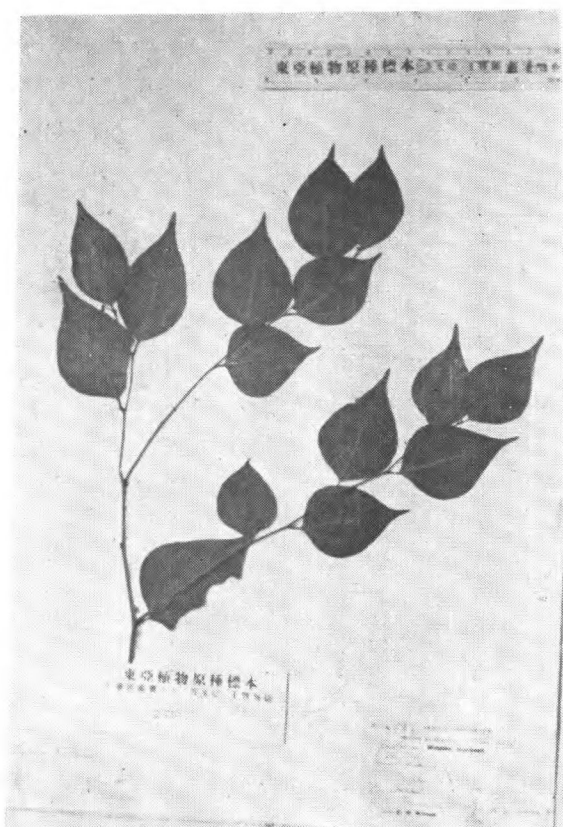
Neocinnamomum hainanum Allen
S. K. Lau 26781 (type) 海南



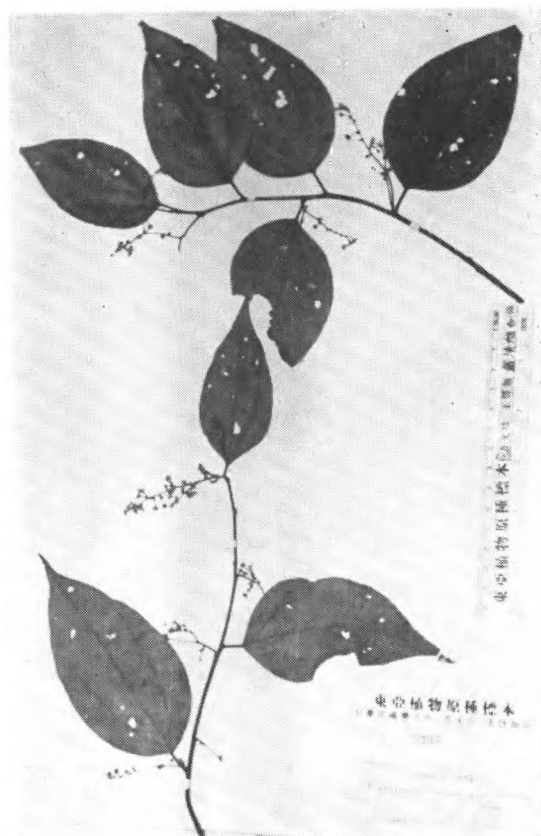
Neocinnamomum parvifolium Lecomte
Ducloux 7115, (type) 云南宾川



Neocinnamomum Poilanei Liou
Poilane 2429 (isotype) 安南(越南)



Neocinnamomum Wilsonii Allen
Wils. 4597 (type) 四川大宁县



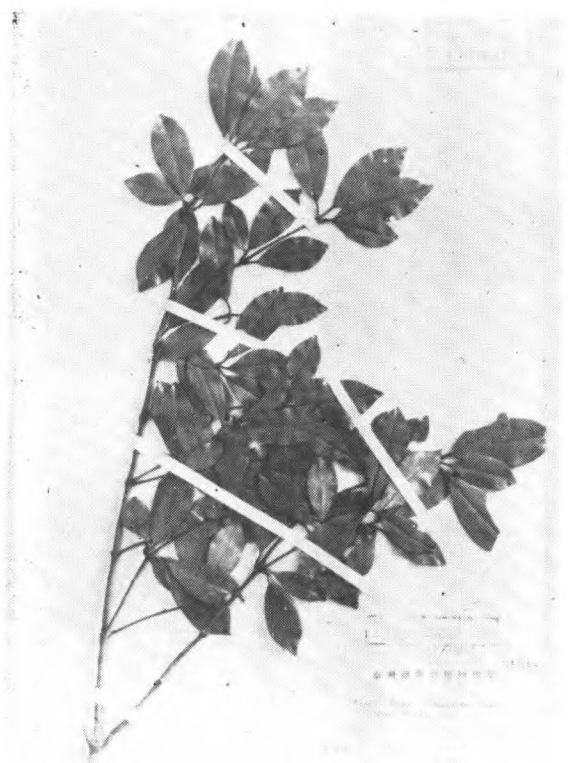
Neocinnamomum yunnanensis Liou
Henry 12401 (isotype) 云南思茅

新木薑子屬 *Neolitsea* Merr.

Neolitsea acuminatissima (Hay.) Kan. et Sas.
S. Sasaki 无号 (iso-syntype)
Arisan, 台湾



Neolitsea acuto-trinervia (Hay.) Kan. et Sas.
T. Kawakamiet U. Mori 1796, (isotype)
Mt. Morrison, 台湾



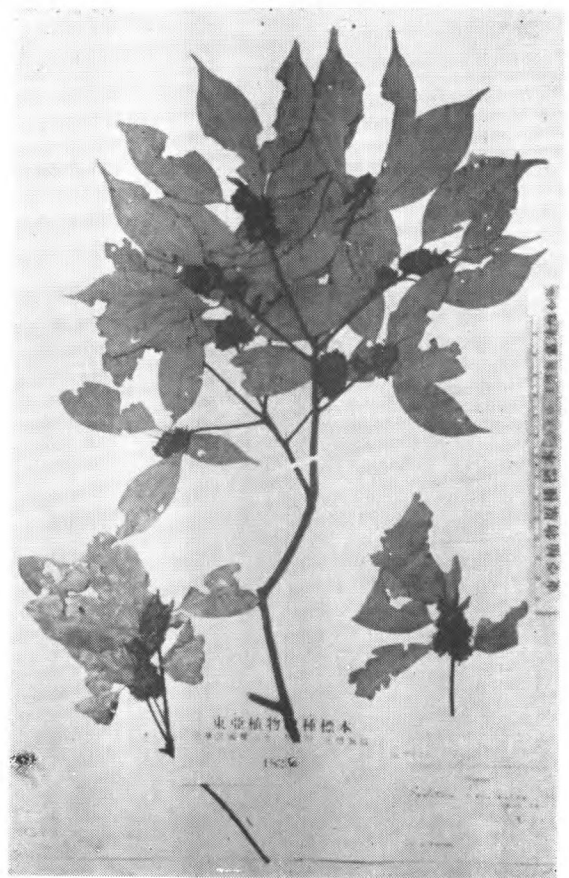
Neolitsea buisanensis Yamam. et Kamikoti
S. Sasaki 21848, (holotype)
Hiranzan, Koshun, Takao, 台湾



Neolitsea confertifolia (Hemsl.) Merrill
Henry 3054 (type) 湖北



Neolitsea ellipsoidea Allen
Chun et Tso 44132 (type) 海南



Neolitsea homilantha Allen
Forrest 9524. (type) 云南



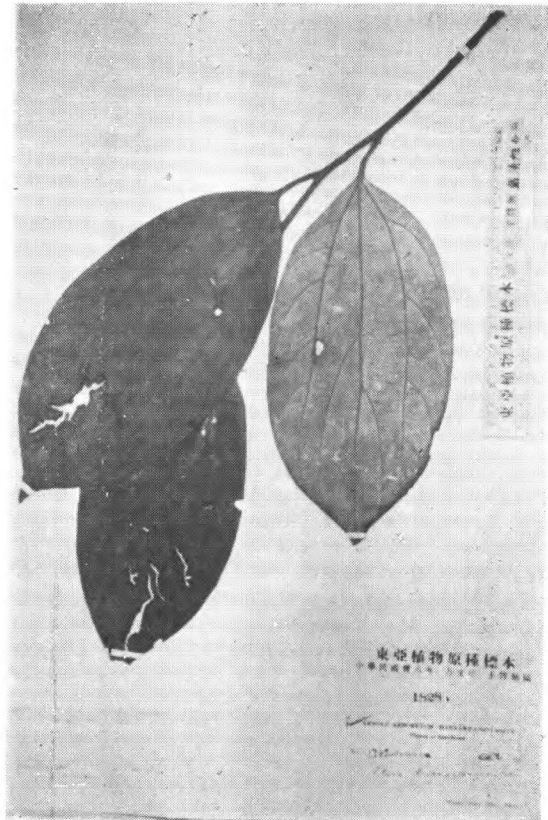
Neolitsea hongkongensis (Chun) Allen
Wils. 299 (type) 香港



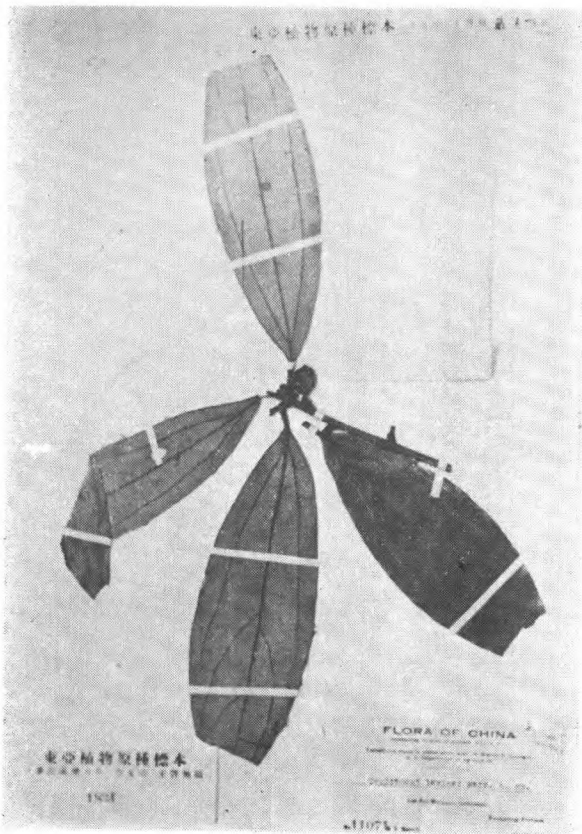
Neolitsea Howii Allen
How F. C. 73402 (type) 海南



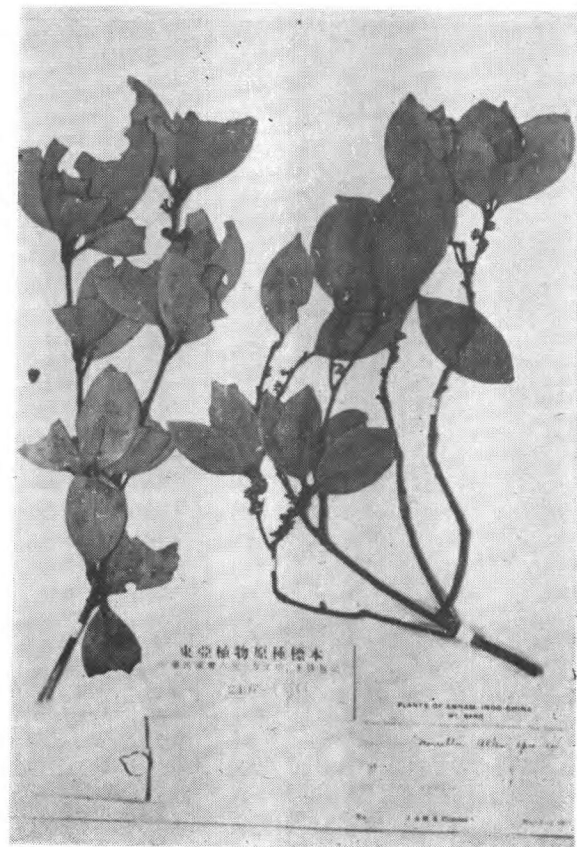
Neolitsea kotoensis (Hay.) Kan. et Sas.
T. Kawakami et S. Sasaki 无号
(iso-syntype) Kotosho, 台湾



Neolitsea kwangsiensis Liou
Yu-shih Liu 1742 四川峨眉



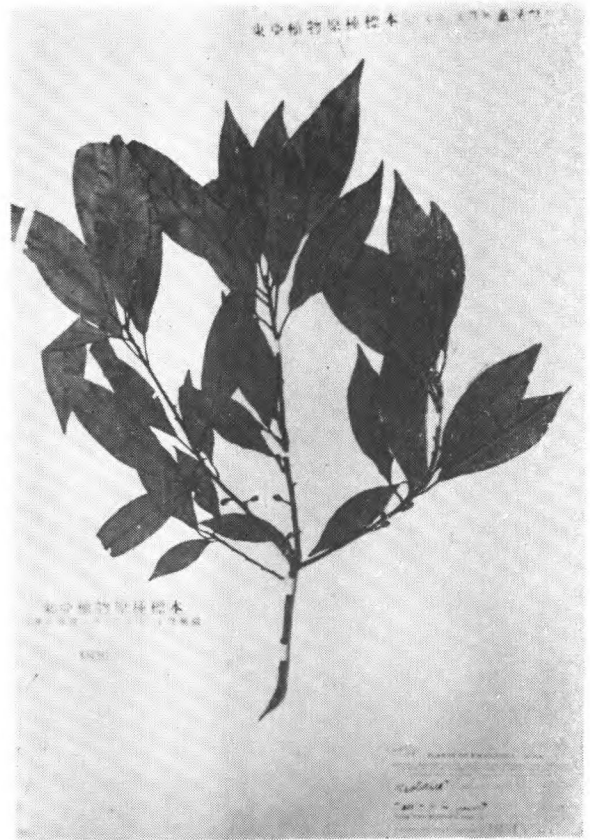
Neolitsea levinei Merr.
E. D. Merrill 11071 (isotype)



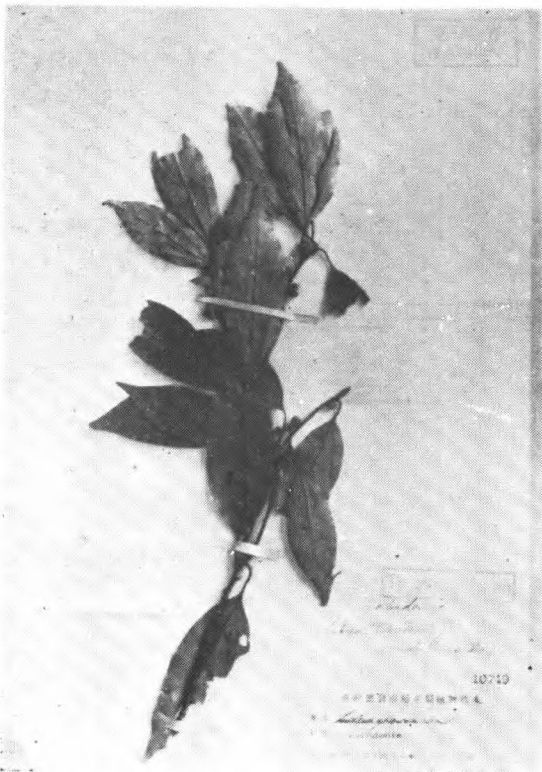
Neolitsea merrillii Allen
Clemens 4225 (type) 安南



Neolitsea oblongifolia Merr.
S. K. Lan 607 (type) 海南黄金山



Neolitsea phanerophlebia Merrill
CCC No. 12515 (isotype) 广东



Neolitsea variabilissima (Hay.) Kan. et
Sas. S. Sasaki 无号 (isotype) 台湾

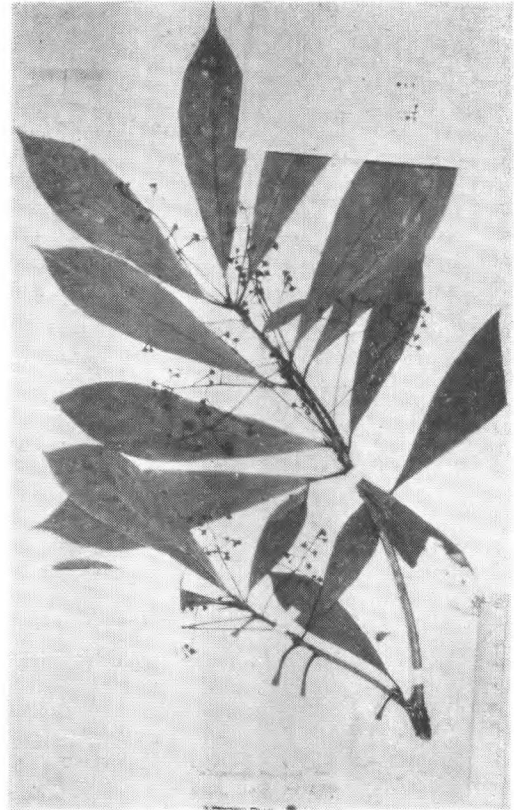


Neolitsea wushanica (Chun) Merrill
Henry 7114 (type)

賽楠屬 *Nothaphoebe* Bl. ex Meissn.



Neolitsea zeylanica (Nees) Merrill var.
Fangii Liou
Fang 5775. (isotype) 四川

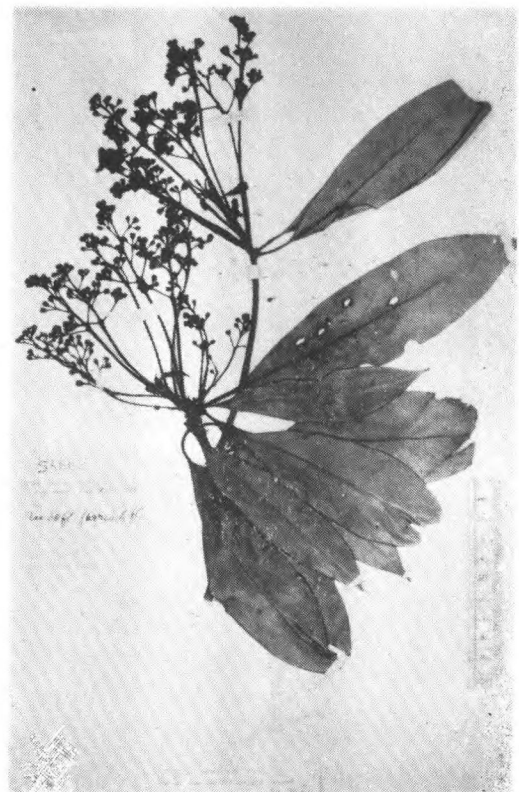


Nothaphoebe omeiensis (Gamble) Chun.
Wils. Veitch 5785 (type), 四川峨眉

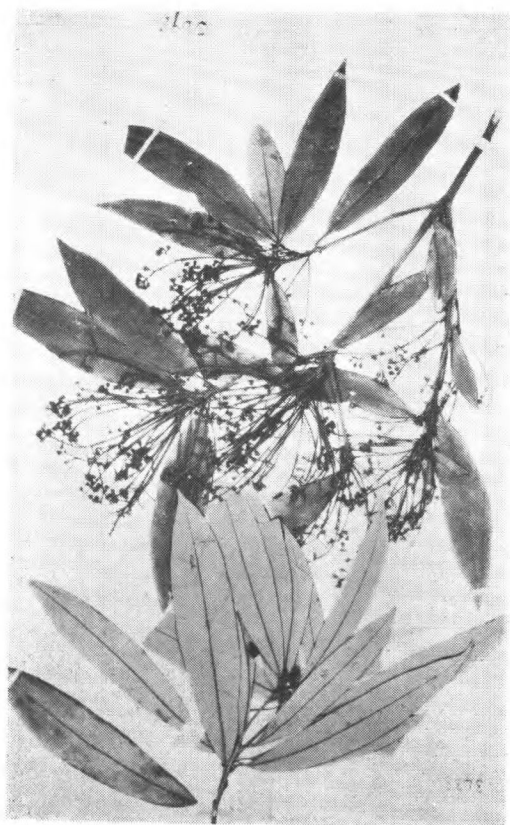
楠木屬 *Phoebe* Nees.



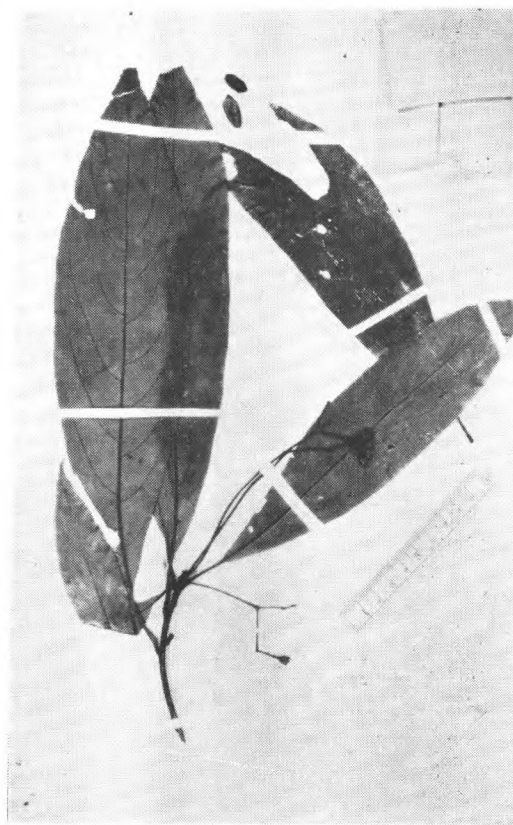
Phoebe acuminata Merrill
CCC no. 12379 (type) 广东



Phoebe chinensis Chun
Henry 5666 (holotype) 四川巫山



Phoebe Faberi (Hemsl.) Chun
Henry 3898 (type) 湖北南沱



Phoebe hainanensis Merr.
McClure 海南

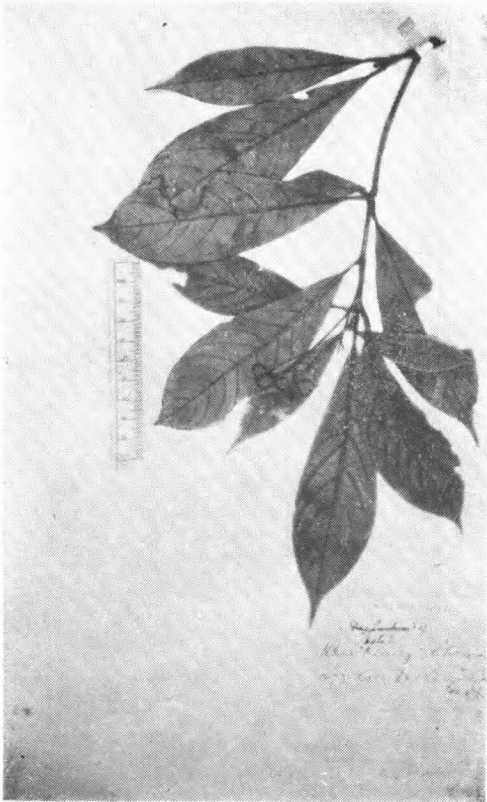


Phoebe hunnanensis H.-M.
H.-M. 570-11785 (isotype) 湖南

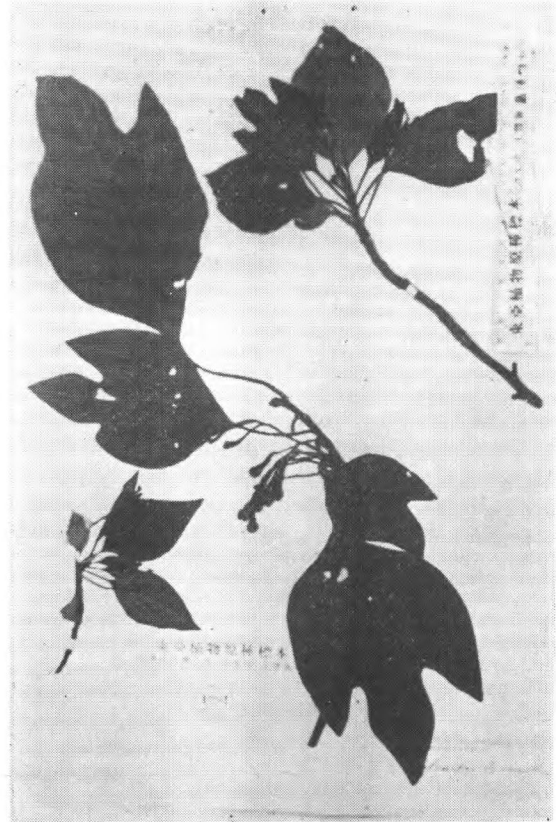


Phoebe neurantha Gamble
Henry 7128 (type) 湖北

Sassafras L.



Phoebe Sheareri (Hemsl.) Gamble
Shearer 1873 (syntype) 江西九江



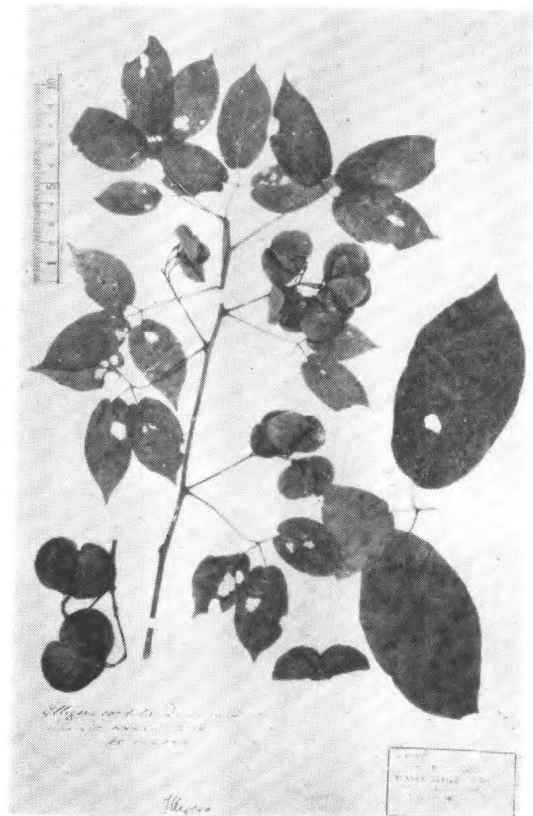
Sassafras tsumu Hemsl.
Wils. 64. Kui-chow.

蓮叶桐科 *Hernandiaceae*

蓮叶桐屬 *Hernandia* Blume.



Sassafras randaiensis (Hayata) Nakai
Wils. 10800. 台湾



Illiger cordata Dunn
Henry 9902 云南

56. 罂粟科 Papaveraceae

薊罂粟屬 *Argemone* L.



Argemone mexicana L.
M. P. Edgeworth 73. 印度西北

白屈菜屬 *Chelidonium* L.

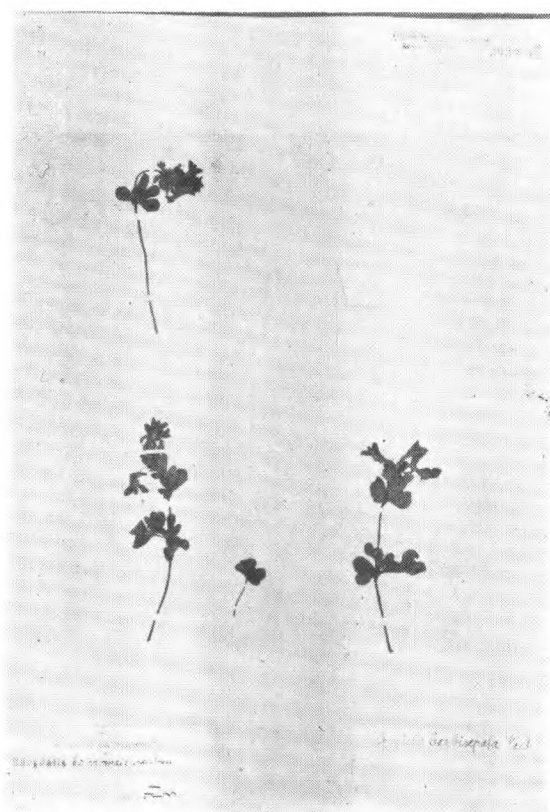


Chelidonium majus L.
F. Karo 37. Dahurica

紫堇屬 *Corydalis* Ventenat.



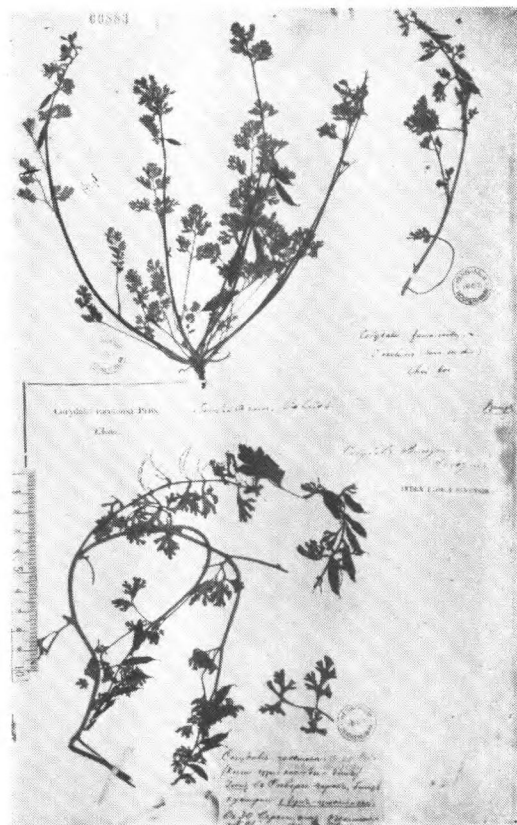
Corydalis adrieni Prain
Forr. 2227 (type) 云南丽江



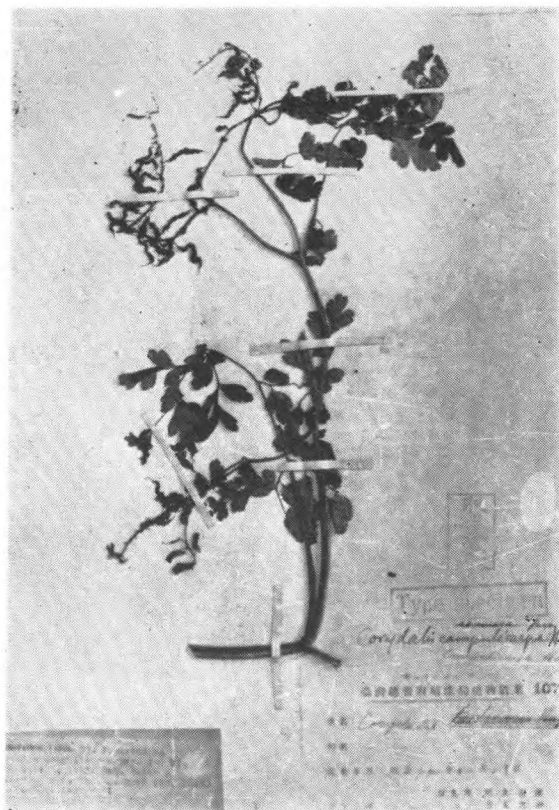
Corydalis barbispala H.-M. et Fedde
H. Waigold (type) 四川松潘附近



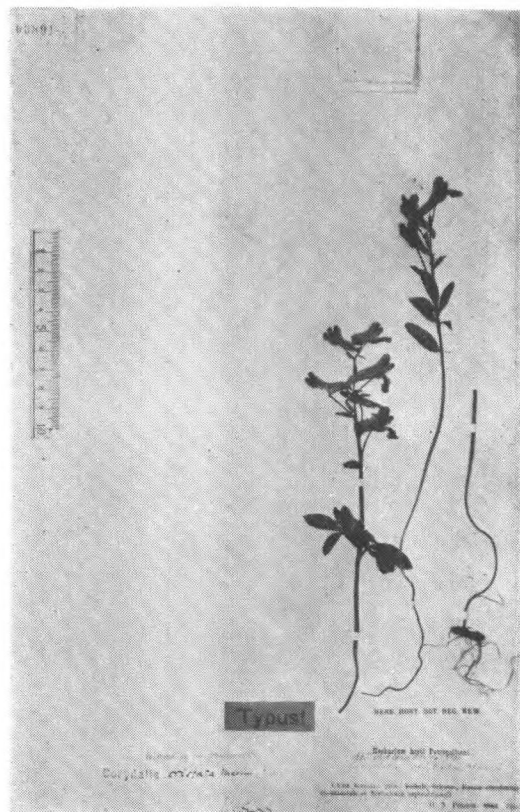
Corydalis benecincta W. W. Sm.
Forrest 14314 云南



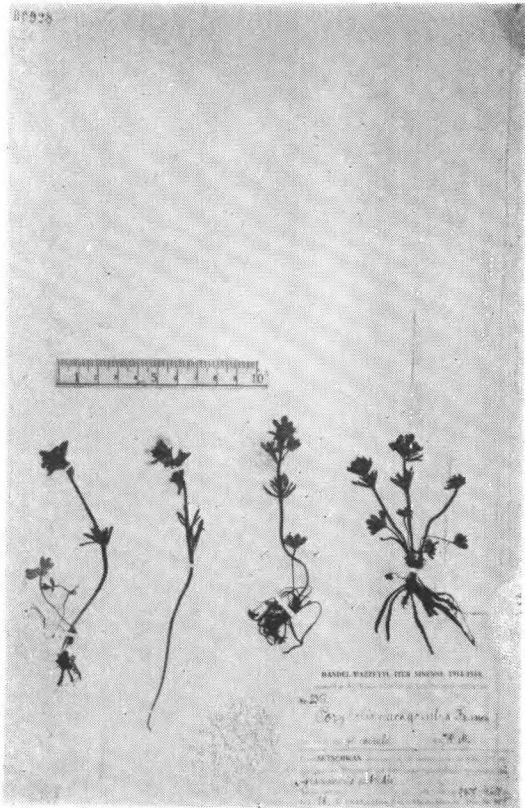
Corydalis Bungeana Turcz.
Bunge (isotype) 中国北部



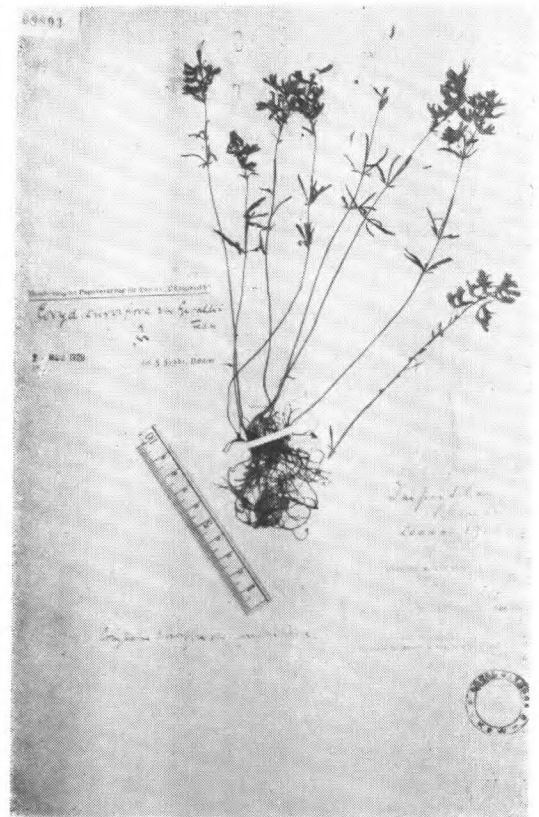
Corydalis campulicarpa Hay.
Y. Mori 2183 (isotyp.) Taito,
Daironkoshi, 台湾



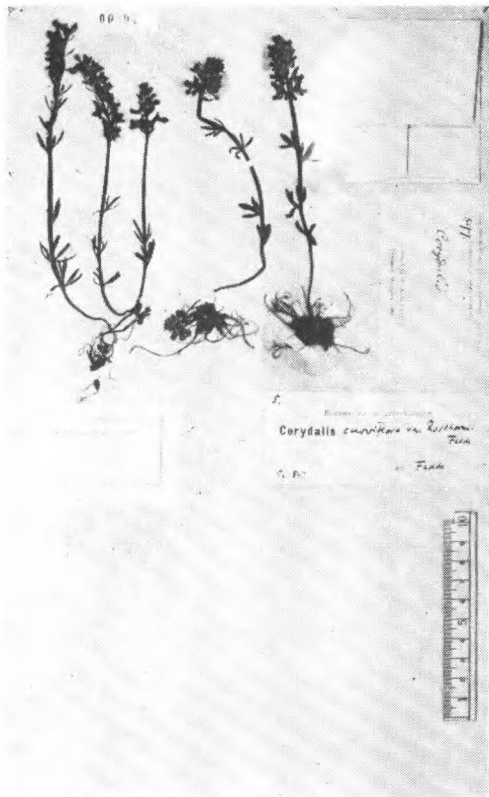
Corydalis cristata Maxim.
Potanin (type) 四川北部



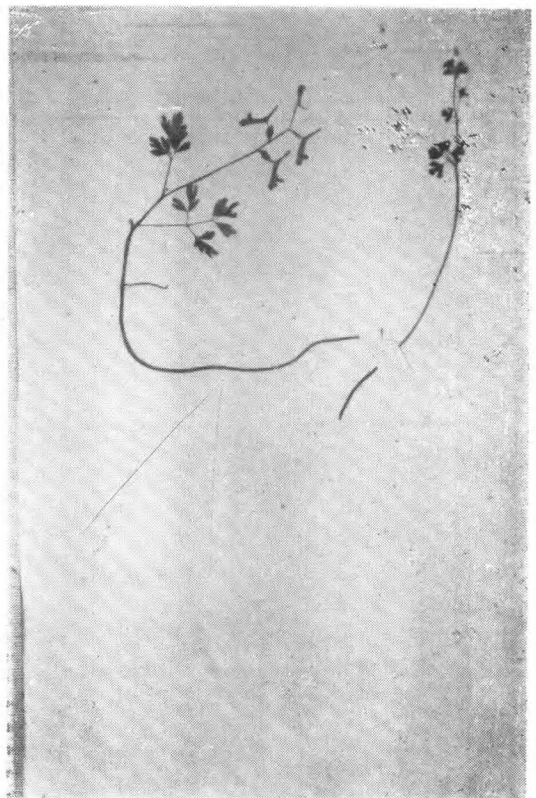
Corydalis curviflora Maxim.
H.-M. 2351 四川盐源



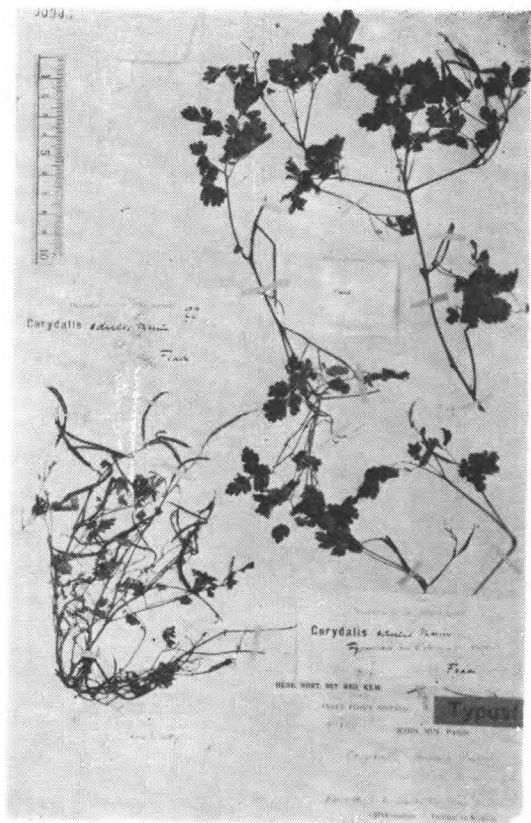
Corydalis curviflora Maxim. var.
Giraldi Fedde
W. Purdom 陝西太白山



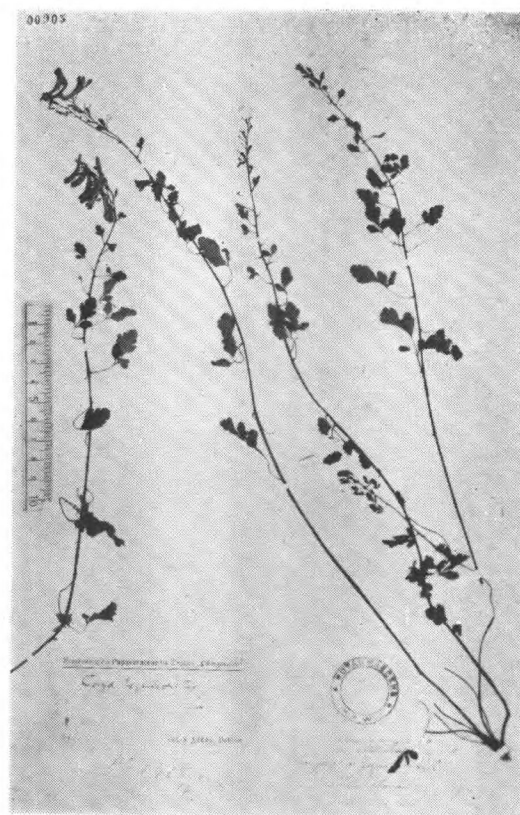
Corydalis curviflora Maxim. var.
Rosthornii Fedde
A. E. Pratt 597. 西康打箭炉



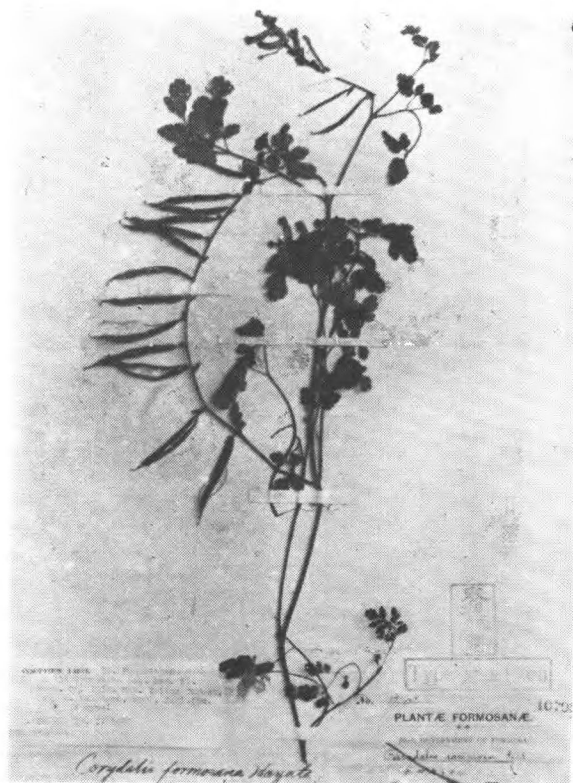
Corydalis dacumbens (Thbg.) Pers.
Thbg. (type) 日本



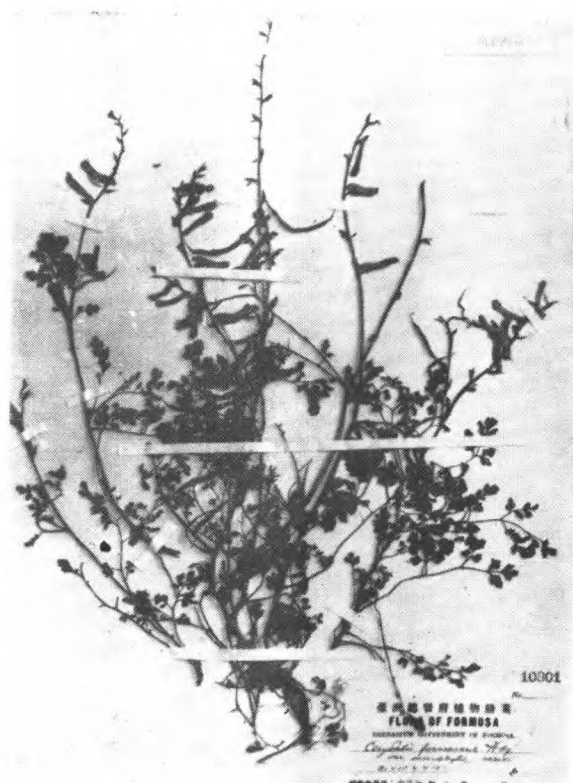
Corydalis edulis Maxim.
David 844 (type) 江西九江



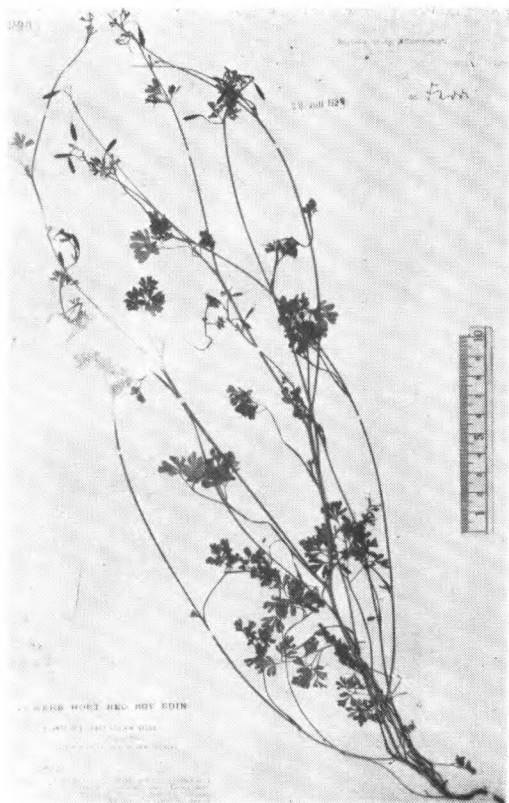
Corydalis Esquirolii Lévl.
Cavalerie 4418 (isotype) 貴州



Corydalis formosana Hay.
G. Nakahara 710 (isotype) Taito, Taruko
台湾



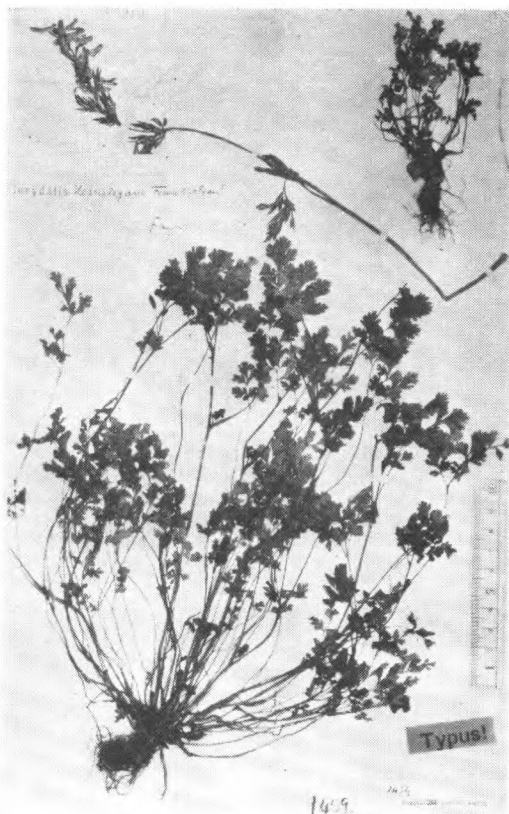
Corydalis formosana Hay. var.
microphylla Sasaki
S. Sasaki (type) Takadai Sintiku, 台湾



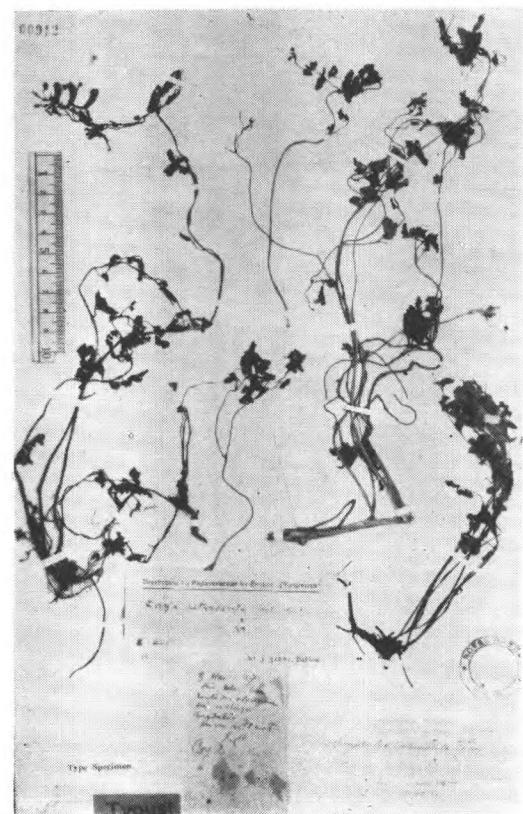
Corydalis gracilis Fr.
Forrest 2825 云南丽江



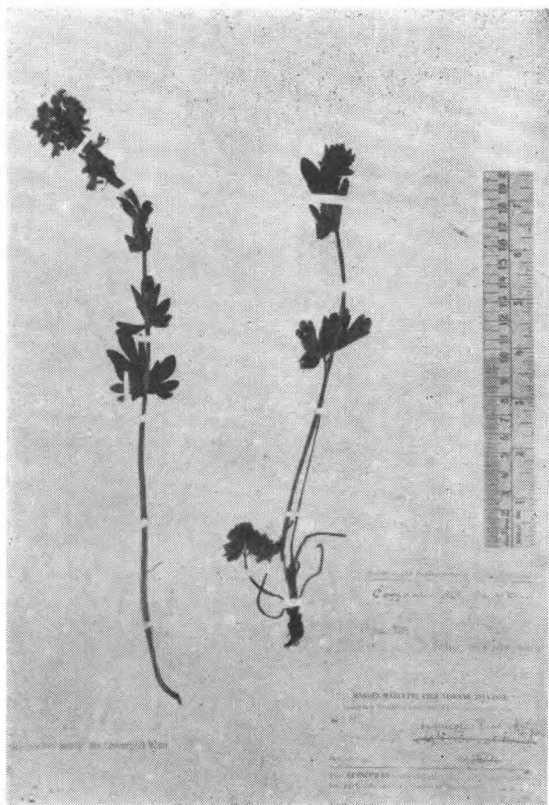
Corydalis hamata Franch.
Forr. 20964



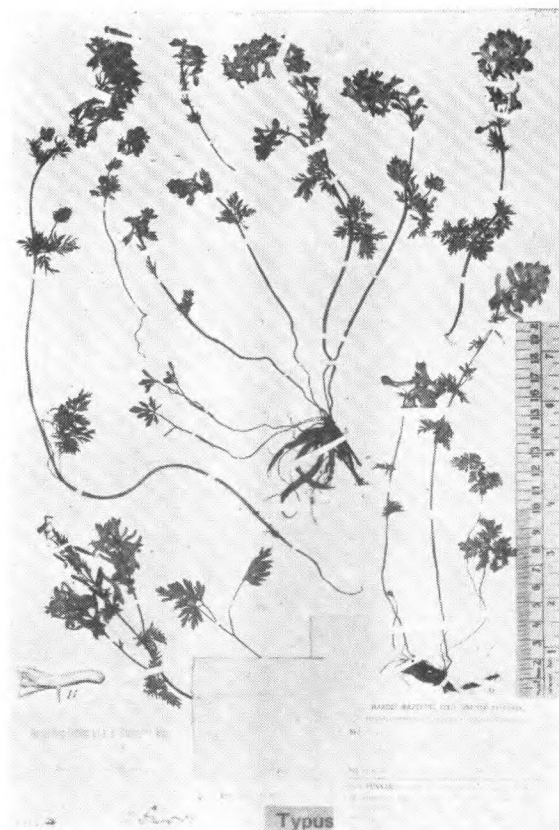
Corydalis Hemsleyana Fr. et Prain
Henry 1459 (type.) 湖北巴东



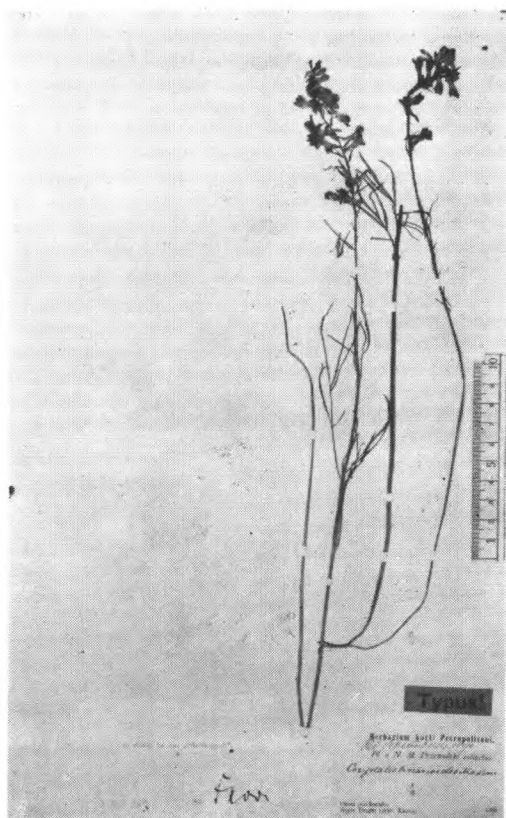
Corydalis heterodonta Lévl.
J. Cavalerie 3005. (type) 貴州



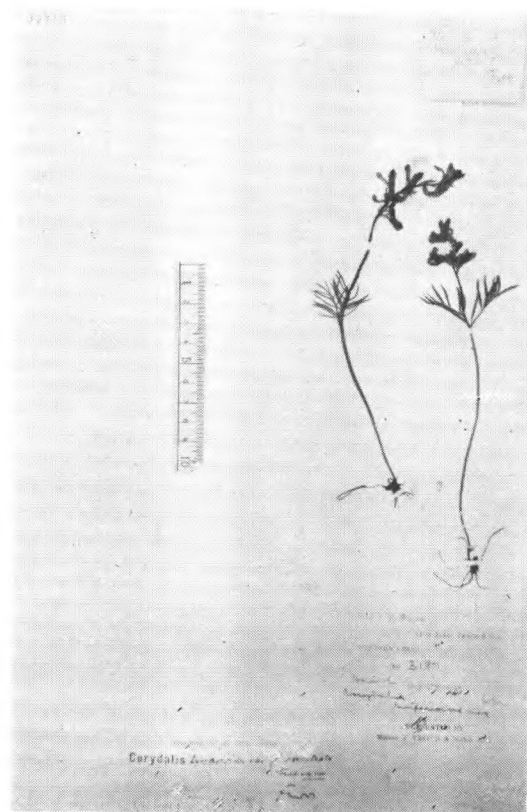
Corydalis humicola H.-M.
H.-M. 2967 (type) 西康盐源



Corydalis kokiana H.-M.
H.-M. 4503 (type) 云南中甸



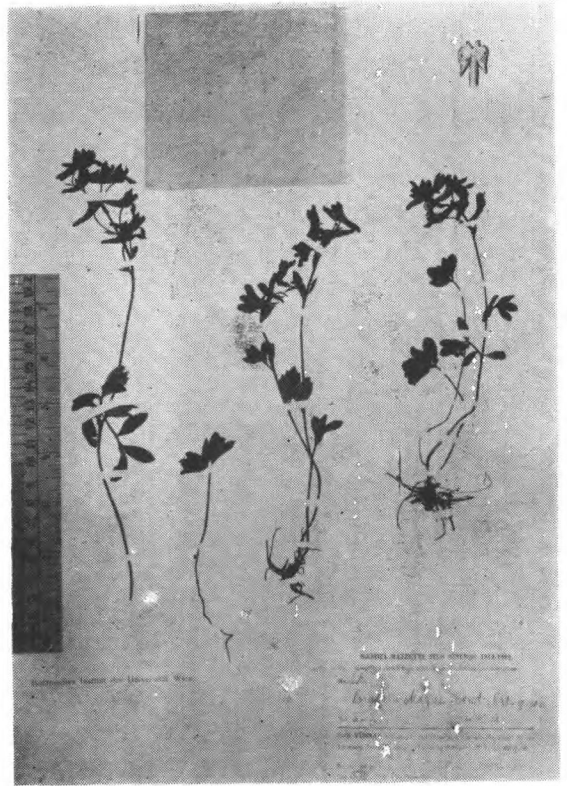
Corydalis linarioides Max.
Przewalski (isotype) 甘肃



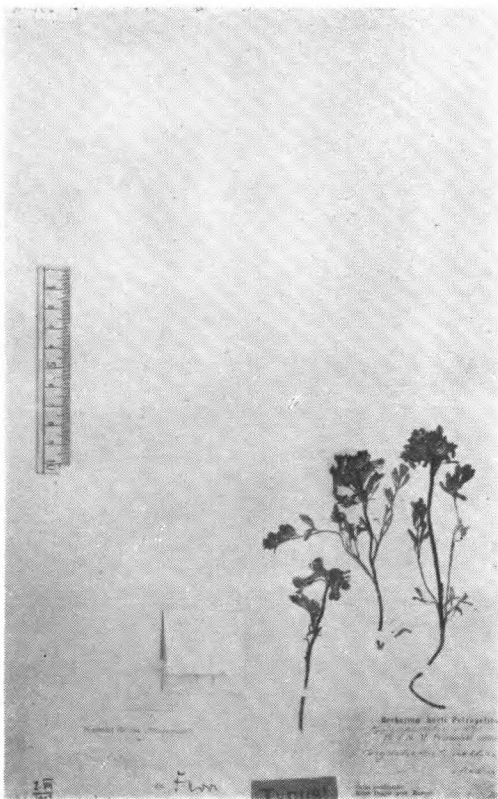
Corydalis linarioides Max. var. *fissibracteata* Fedde Wils. (Veitch) Exp. 3181
(type) 西康



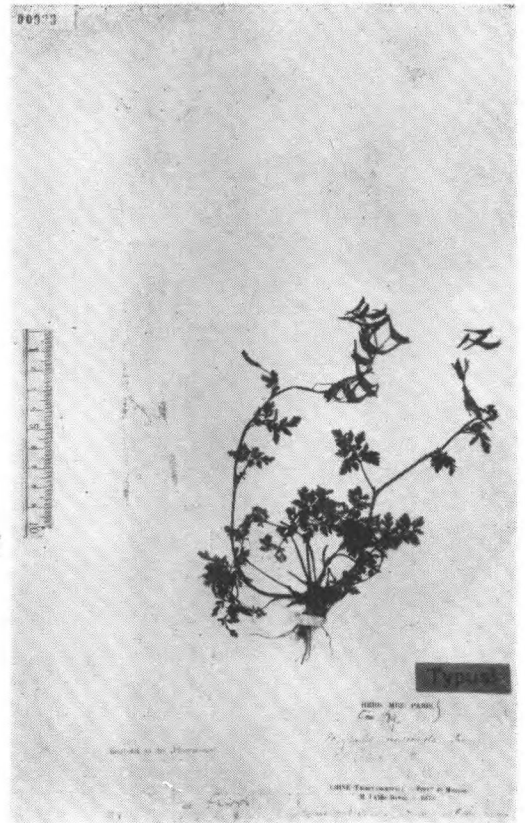
Corydalis Martinii Lév. et Van.
Martin (isotype) 貴州



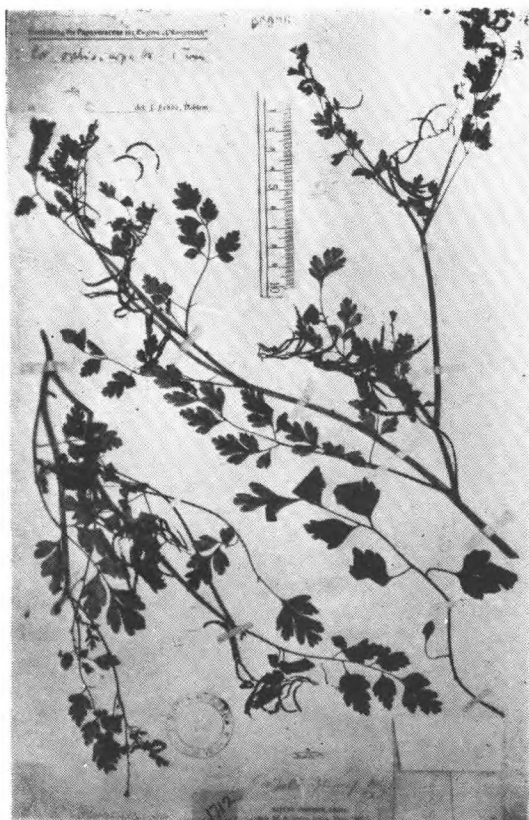
Corydalis Mayae H.-M.
H.-M. 9632 (holotype) 云南澜怒間



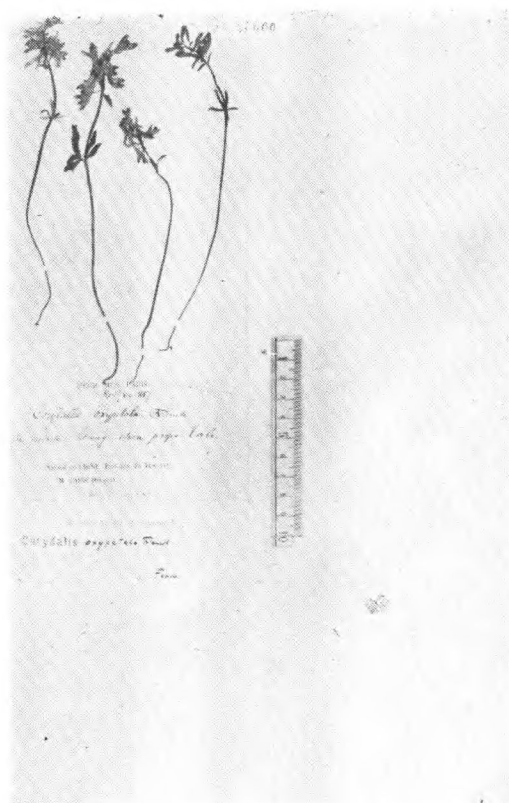
Corydalis melanochlora Maxim.
Przewalski (type) 甘肃西南



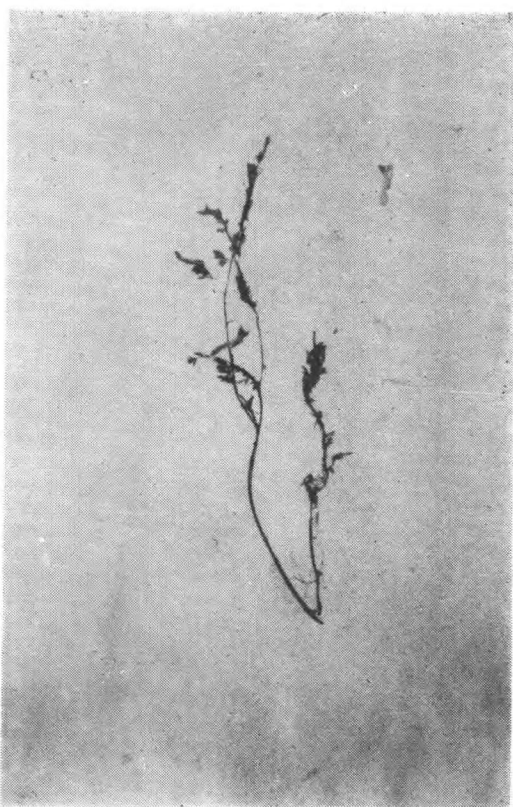
Corydalis mucronata Fr.
David (type) 西康穆坪



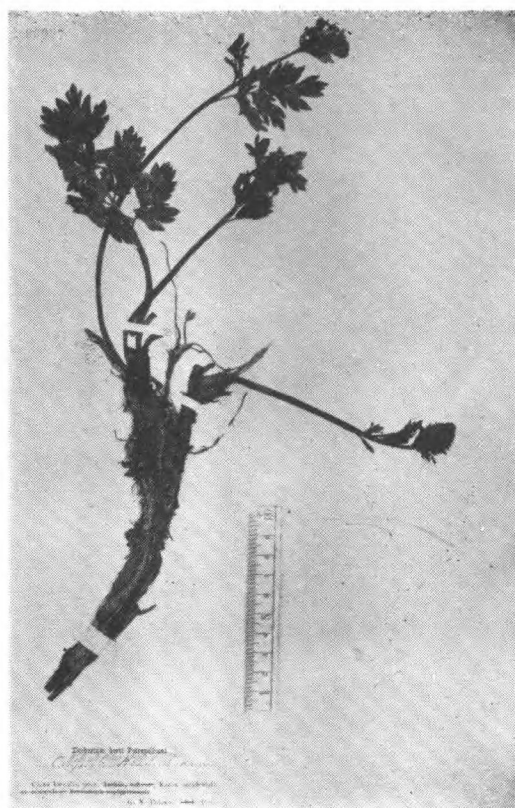
Corydalis ophiocarpa Hk. f. et Thom.
Henry 1712 湖北巴东



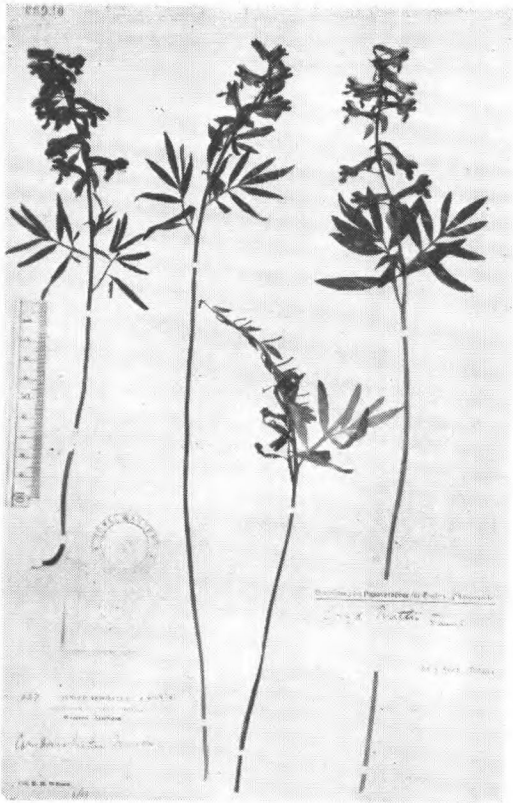
Corydalis oxypetala Fr.
Delavay 云南苍山



Corydalis pallida (Thbg.) Pers.
Thbg. (type) 日本



Corydalis Potanini Maxim.
Potanin (isotype) 甘肃西部



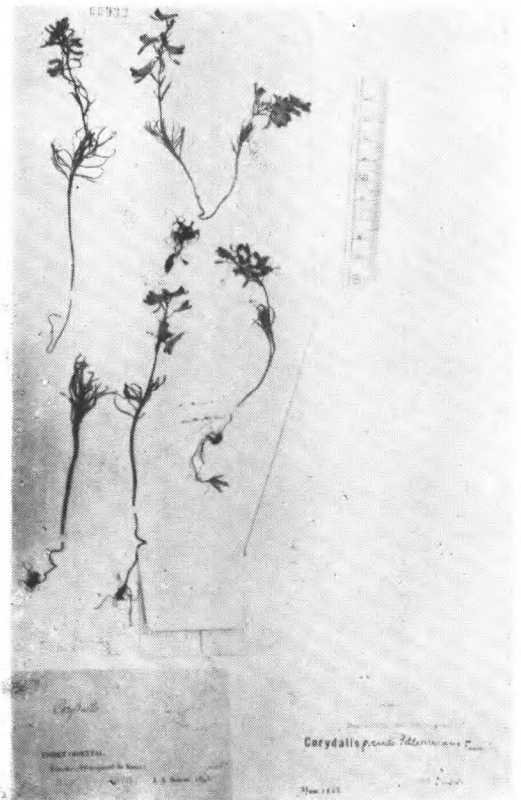
Corydalis Prattii Fr.
Wils. 1037. 四川西部



Corydalis pseudocristata Fedde
Wils. (Veitch) 3175. (type) 四川



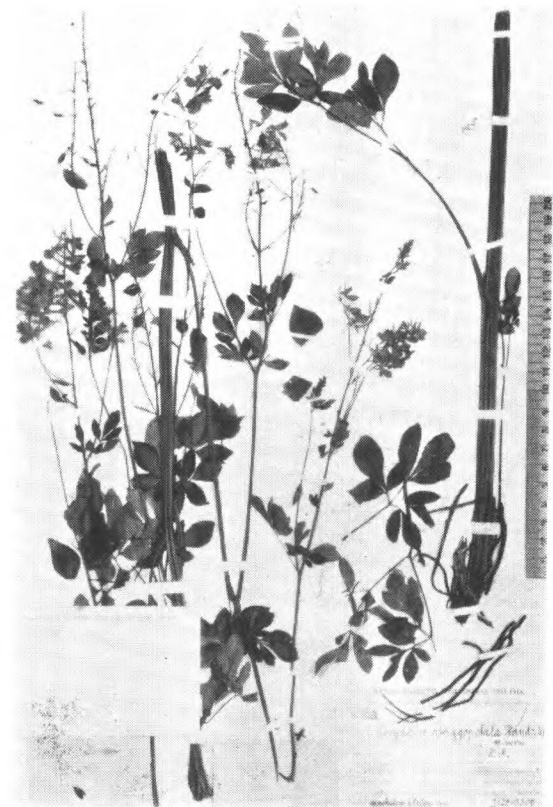
Corydalis pseudofluminicola Fedde
Forrest 14497a. 云南



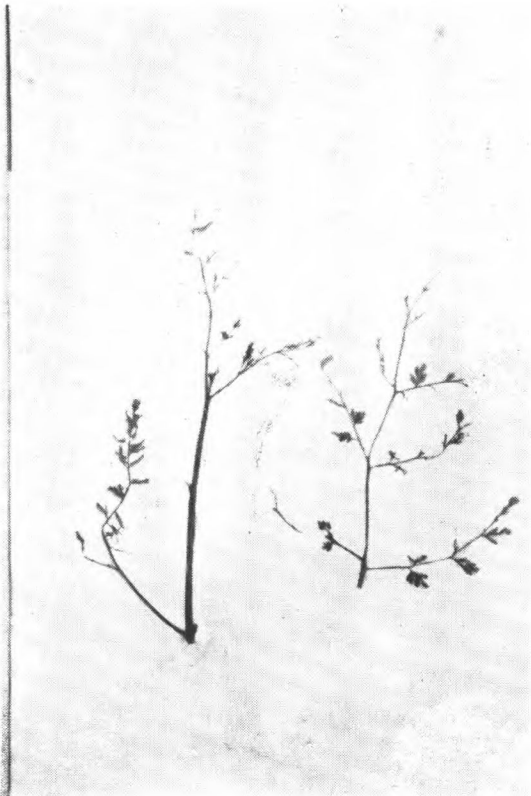
Corydalis pseudoschlechteriana Fedde
J. A. Soulie 359. 西康



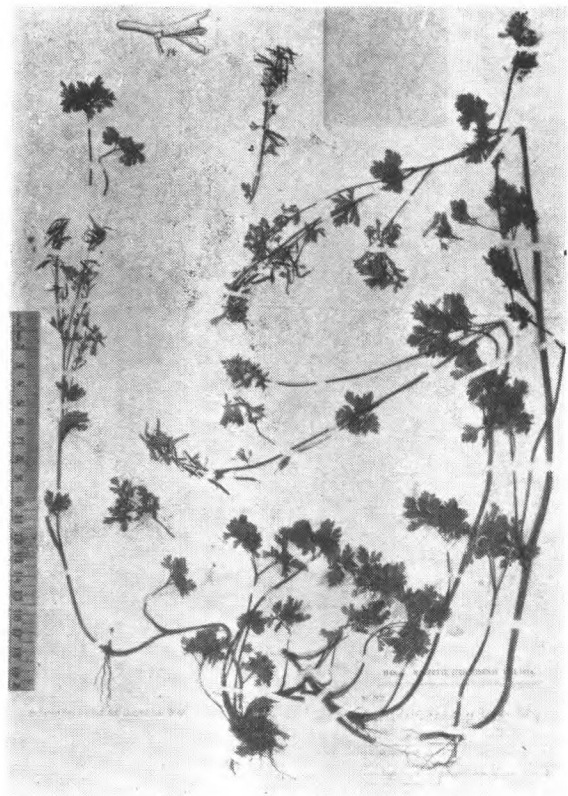
Corydalis pseudotomentella Fedde
Wils. (Veitch) 290 (type) 湖北巴东



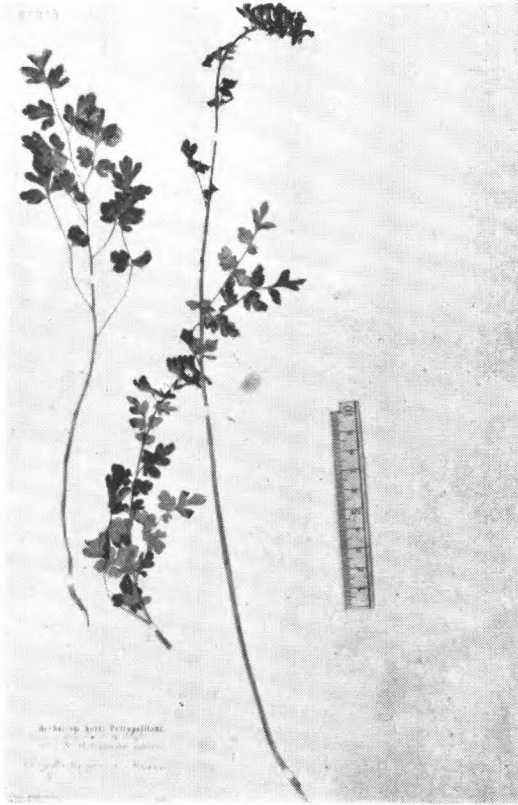
Corydalis pterygopetala H.-M.
H.-M. 9252. (holotype) 云南怒隸



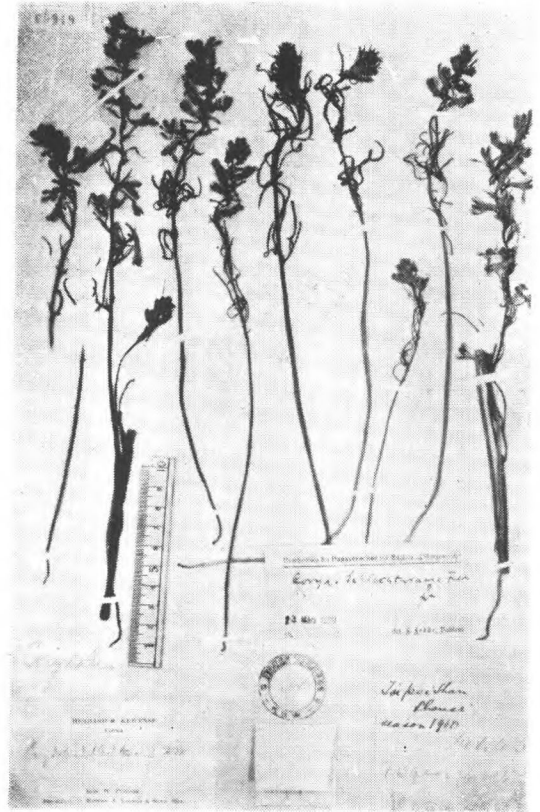
Corydalis racemosa (Thbg.) Pers.
Tabg. (type) 日本



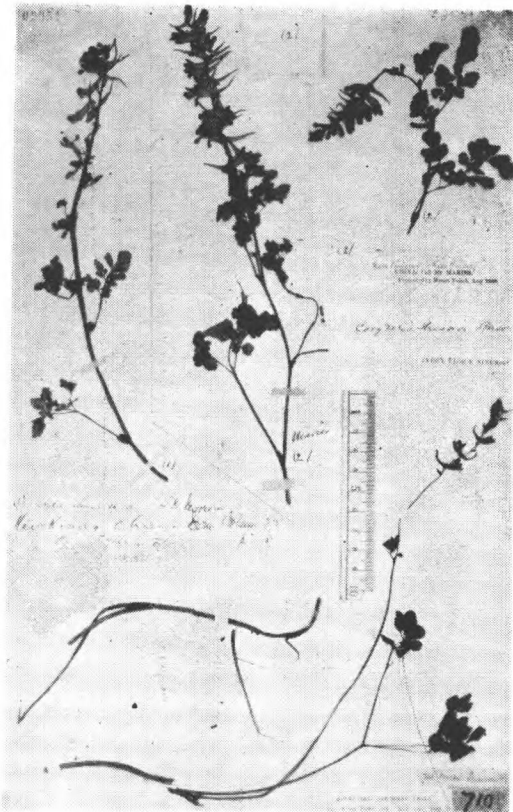
Corydalis radicans H.-M.
H.-M. 7455 (type) 西康木里



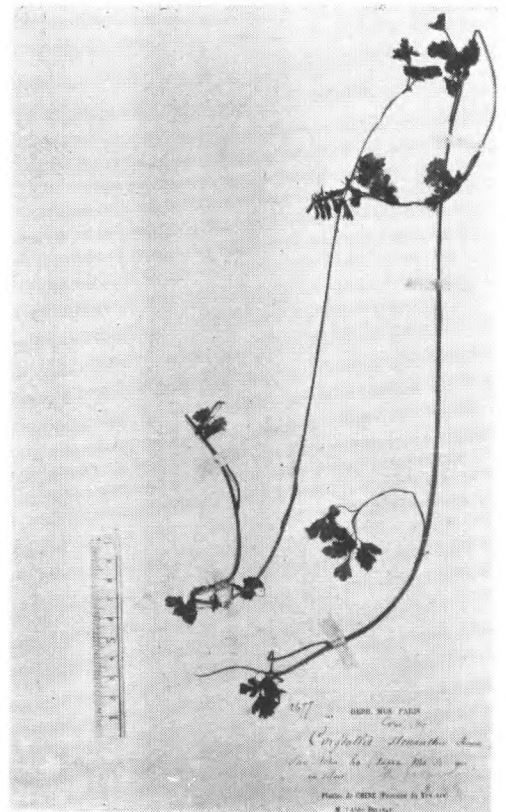
Corydalis rosea Maxim.
Przewalski 1890 甘肃



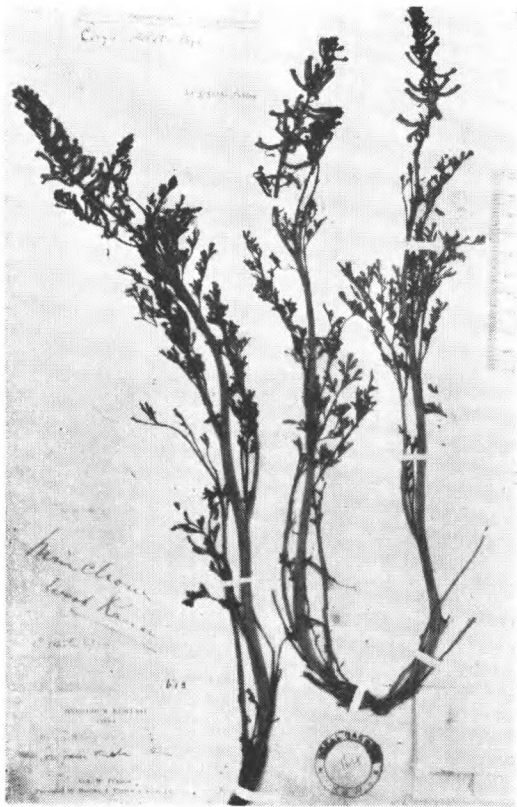
Corydalis Schlechteriana Fedde
Purdum 443. 陝西太白山



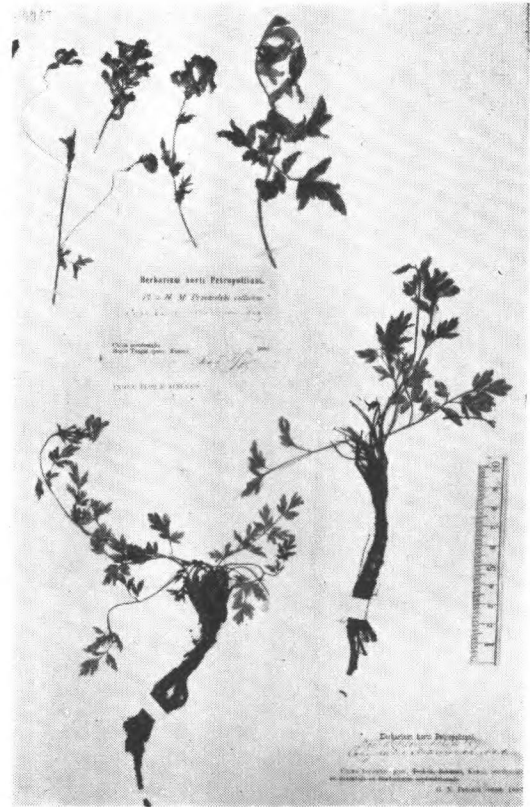
Corydalis Sheareri S. Moore
Faber 710. 四川峨眉, Shearer
(type) Maries 江西九江



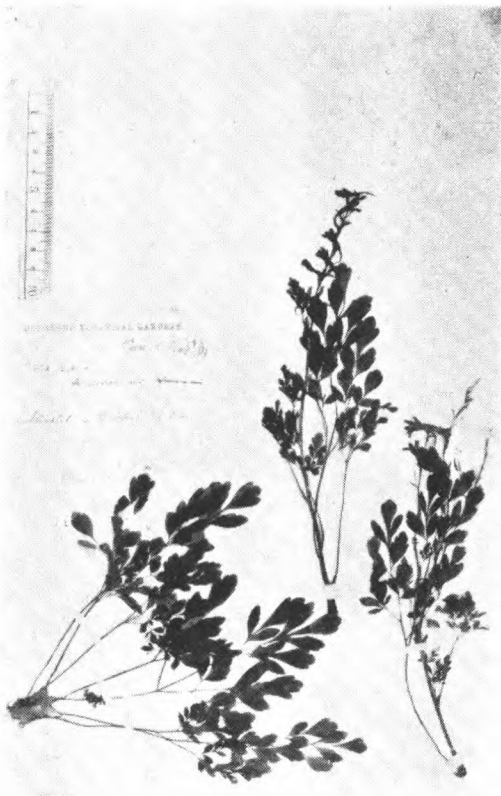
Corydalis stenantha Fr.
Delavay 2677 (isotype) 云南中部



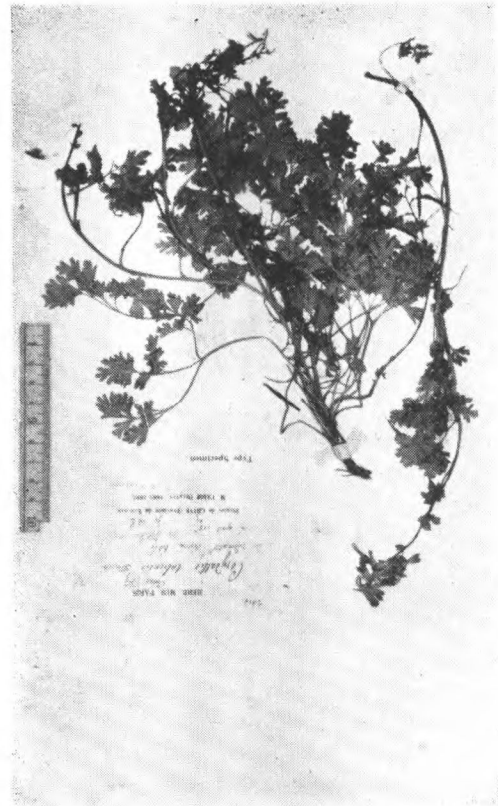
Corydalis stricta Steph. ex Fisch. apud
DC. Purdom 甘肃西岷州



Corydalis straminea Maxim.
Przewalski, 1880 (isotype), Potanin
甘肃西部



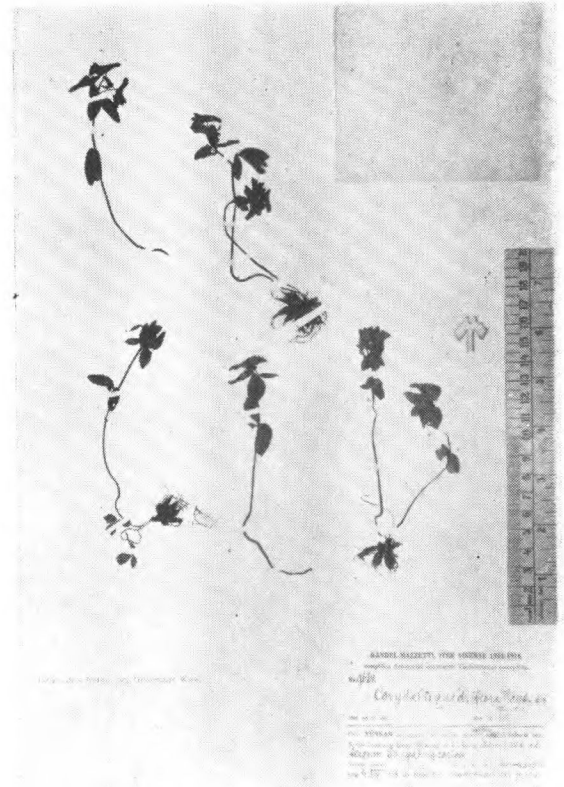
Corydalis suaveolens Hance
C. Ford 181. (type) 香港



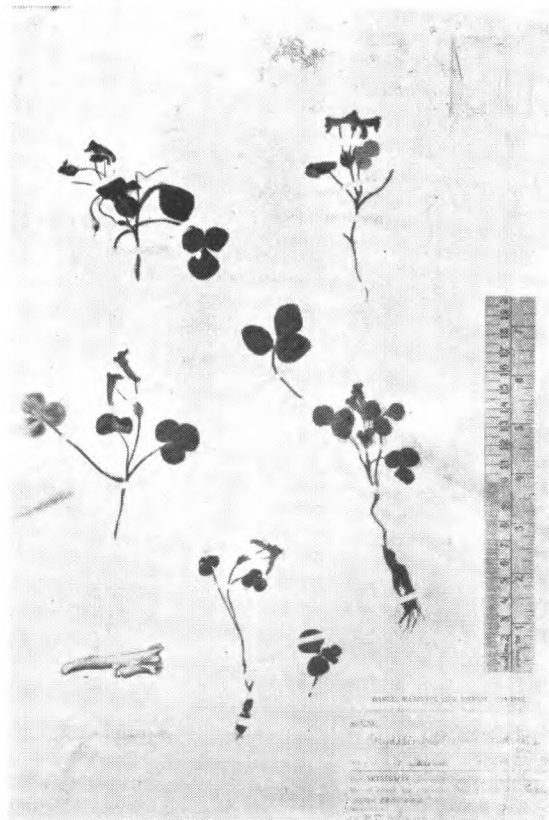
Corydalis taliensis Fr.
Delavay 2614 (isotype) 云南



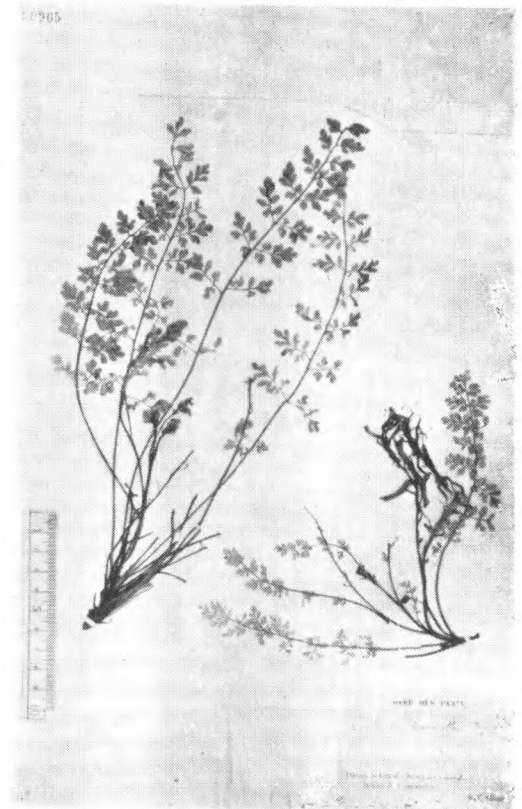
Corydalis trachycarpa Max.
Przewalski (type) 甘肃



Corydalis trifoliolata Fr.
H.-M. 966 云南怒澜

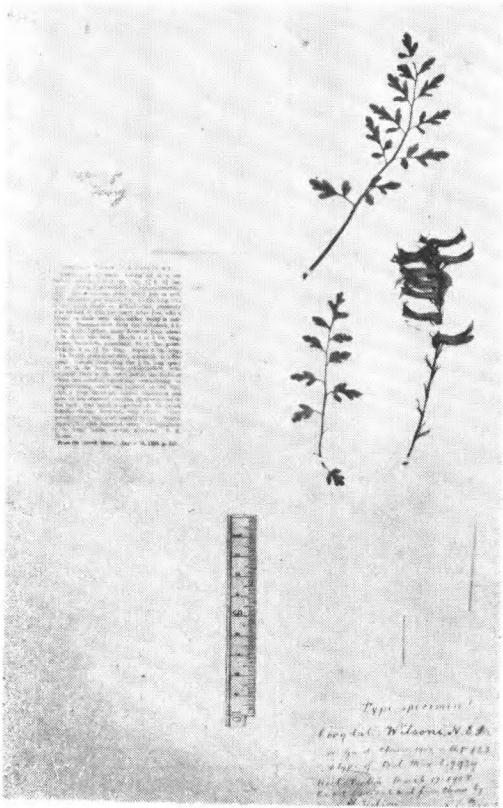


Corydalis trilobipetala H.-M.
H.-M. 7339 (type) 西康木里

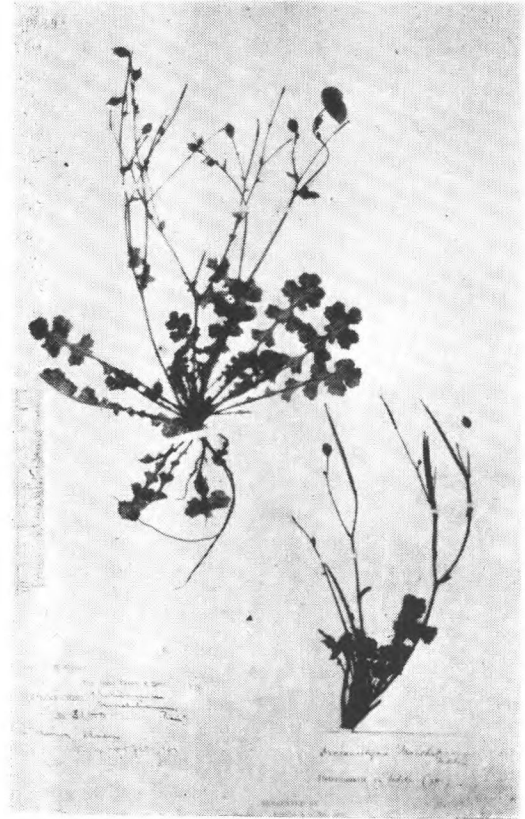


Corydalis tomentella Fr.
Farges (isotype) 四川城口

秃瘡花屬 *Dicranostigma* Hk.f. et Thoms.

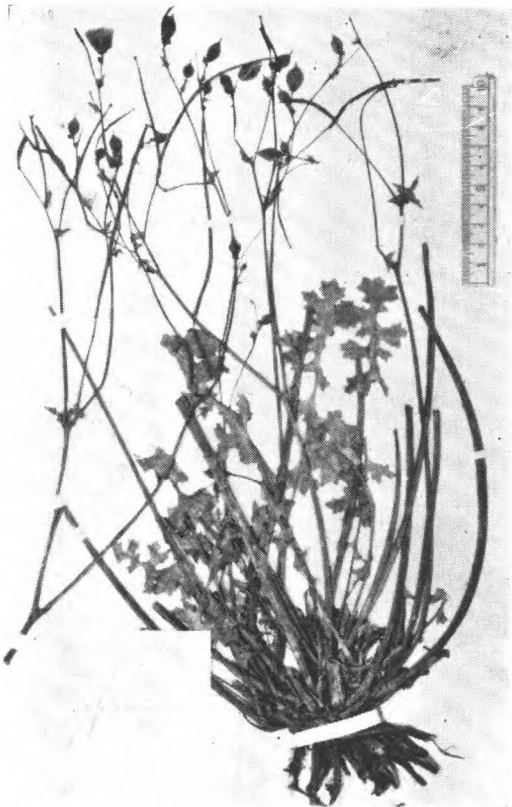


Corydalis Wilsoni N. E. Brown
Wils. (type) 湖北房县

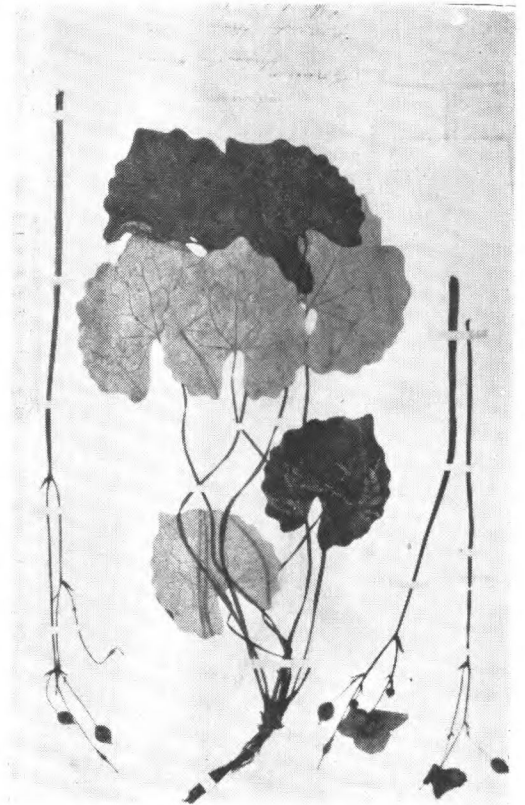


Dicranostigma Franchetianum
(Prain.) Fedde
Wils. (Veitch) 3160 四川

血水草屬 *Eomecon* Hance



Dicraostigma leptopodum (Max.) Fedde
Potanin. 西康打箭炉



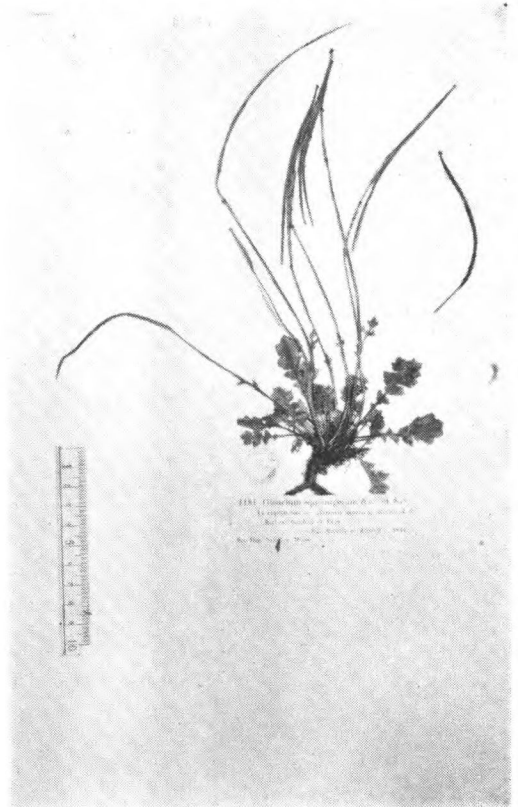
Eomecon chionantha Hance.
C. Ford, 广东

Fumaria L.



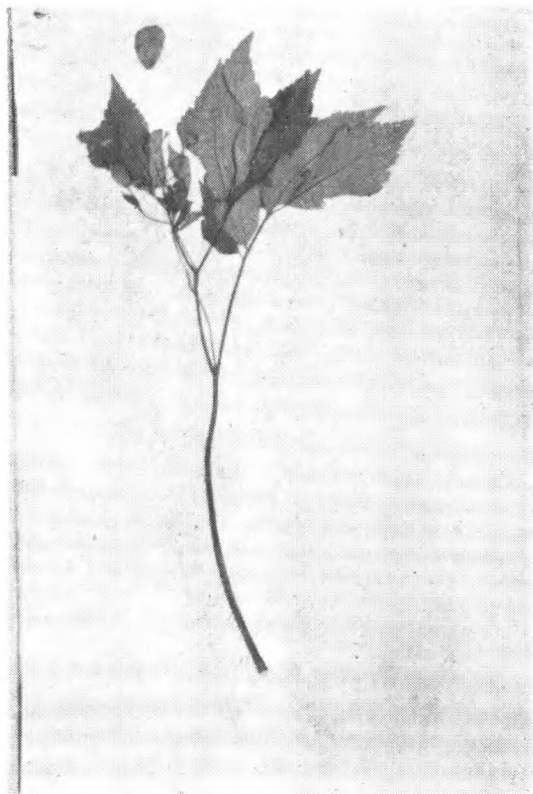
Fumaria Vaillantii Loisel.
Regel 突厥斯坦

海罌粟屬 Glaucium Adans

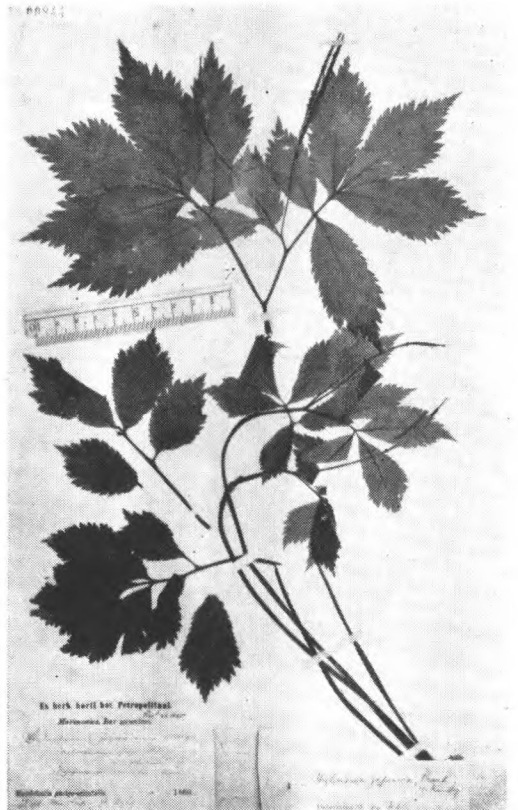


Glaucium squamigerum Kar. et Kir.
Kar. et Kir. 1181 新疆

荷青花屬 Hylomecon Max.



Hylomecon japonicum (Thbg.) Prantl.
Thbg. (Type) 日本



Hylomecon vernalis Maxim.
Max. 滿州里

Hypecoum L.

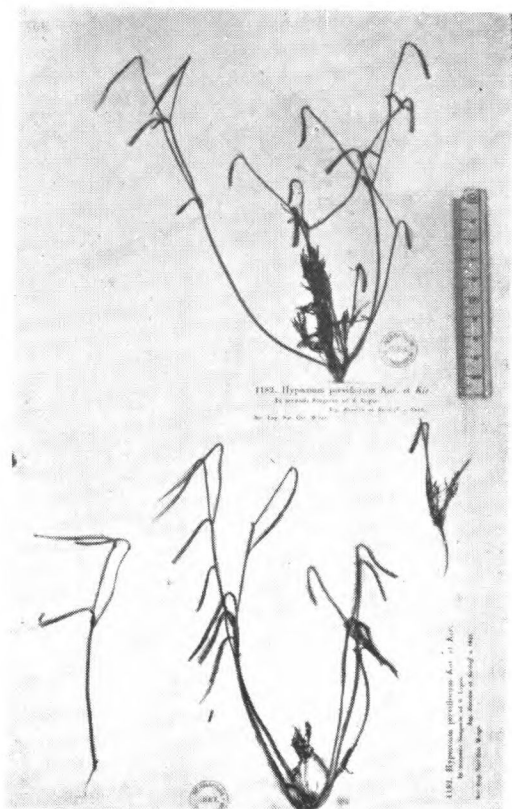


Hylomecon vernalis Maxim. var.
subincisa (Fedde) C. Y. Wu
Wils. (Veitch) 262 (type) 湖北西部

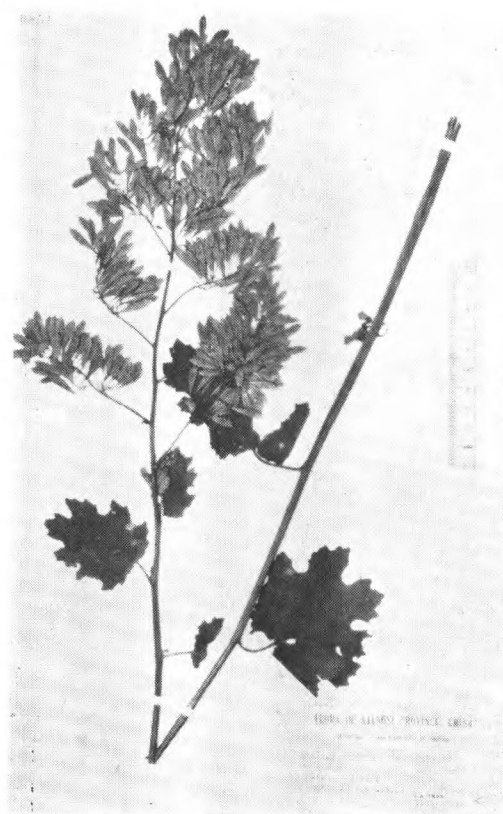


Hypecoum erectum L.
N. W. Chaney 37 外蒙

博落迴屬 *Macleaya* R. Br.

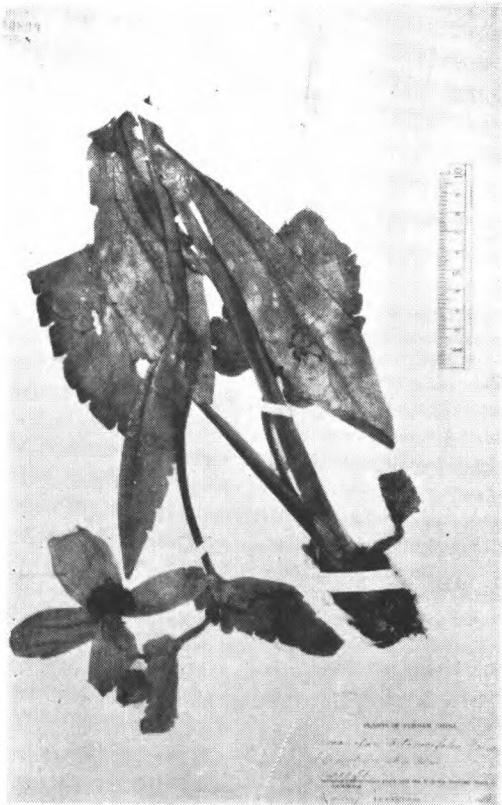


Hypecoum parviflorum Kar. et Kir.
Kar. et Kir. 1182 (cotype) 新疆

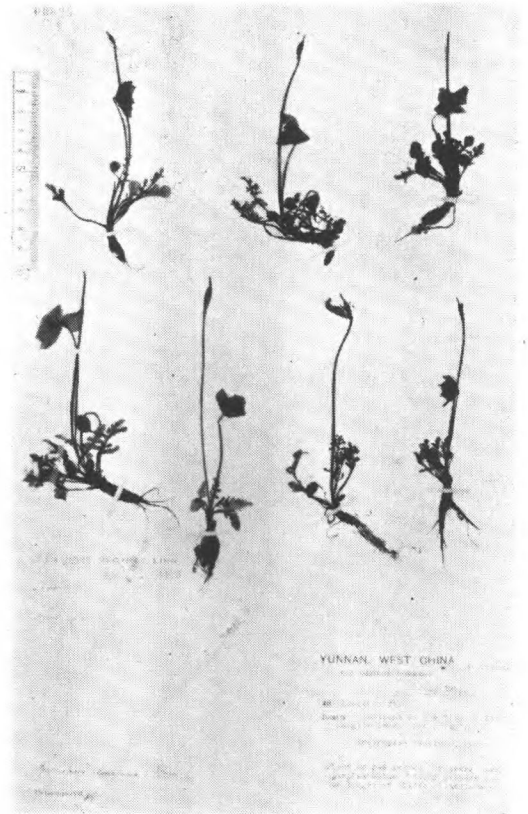


Macleaya cordata (Willd.) R. Br.
Steward 2683. 江西廬山

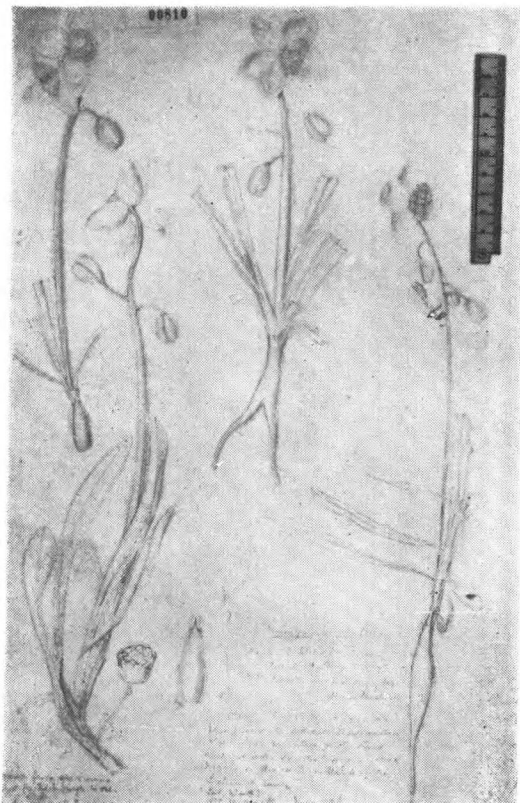
緣絨蒿屬 *Meconopsis* Vigier



Meconopsis concinna Prain
J. F. Rock. 8579. 云南



Meconopsis concinna Prain
Forrest. 10404 (type) 云南



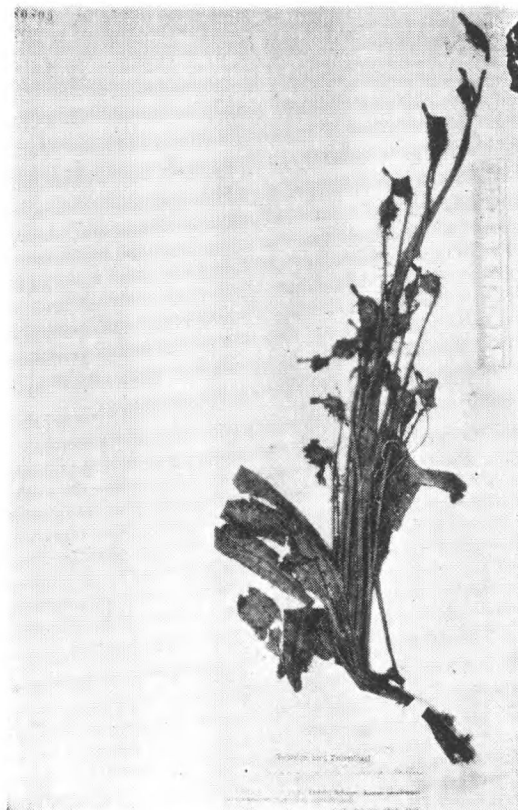
Meconopsis Forrestii Prain
Forrest 2314. (type.) 云南丽江



Meconopsis Henrici Burm. et Fr.
Wils. 957. 四川灌县



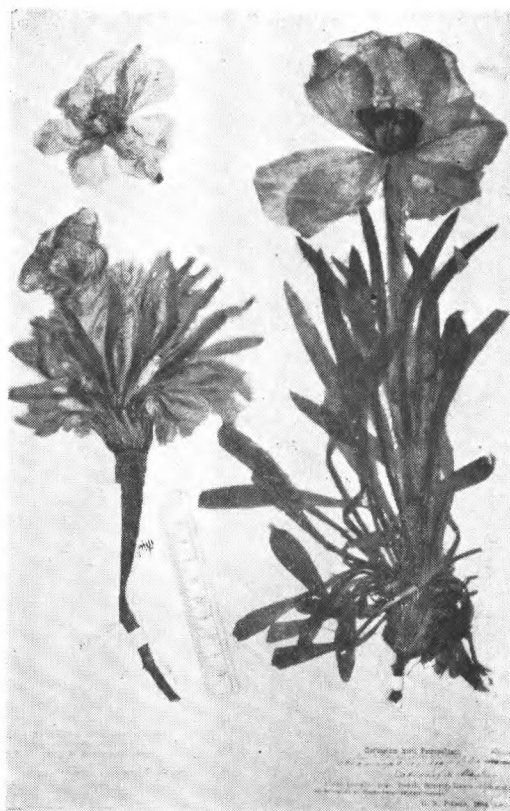
Meconopsis horridula HK. f. et Thoms.
Littledale. 西藏中部



Meconopsis horridula HK. f. et Thoms.
var. racemosa (Max.) Prain.
G. N. Potanin 四川北部



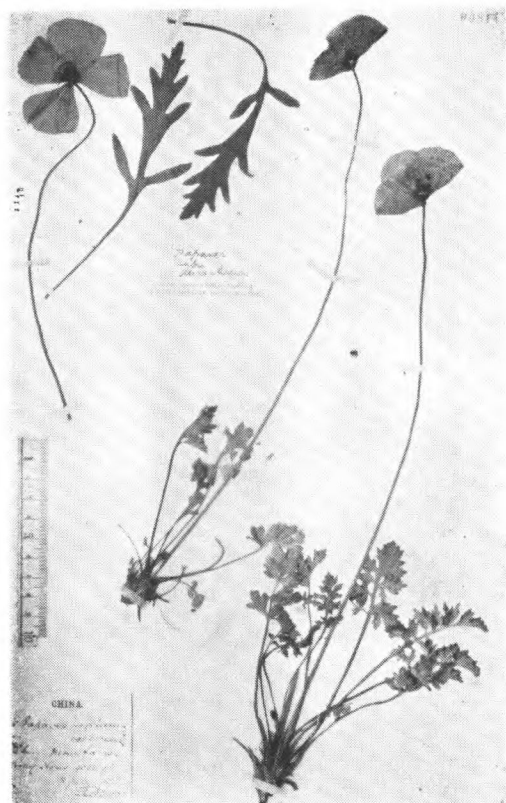
Meconopsis impedita Prain
Forrest 14114. 云南白馬山



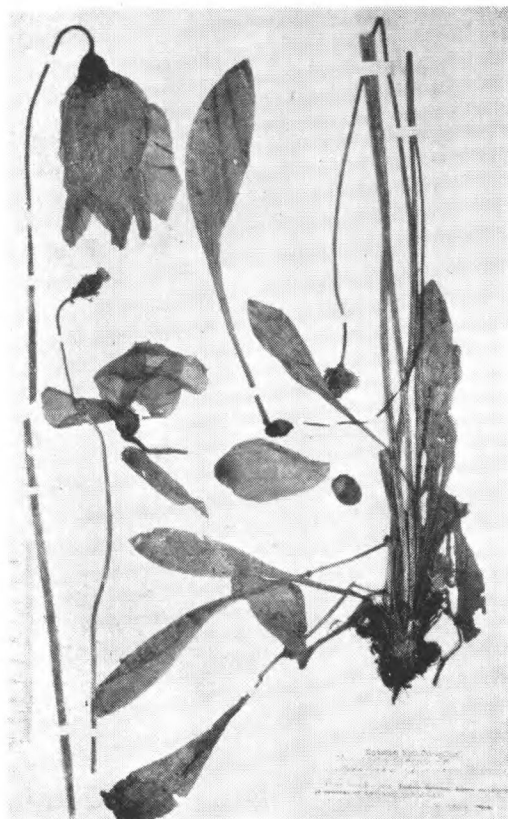
Meconopsis integrifolia (Max.) Fr.
Przewalski 藏东, Potanin 甘肃西部



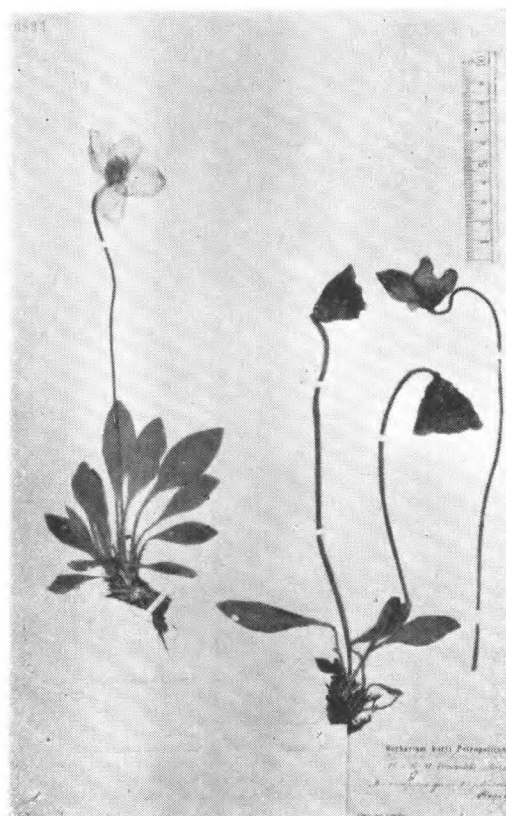
Meconopsis lancifolia Fr.
Delavay 2080. (cotype) 云南浪穹



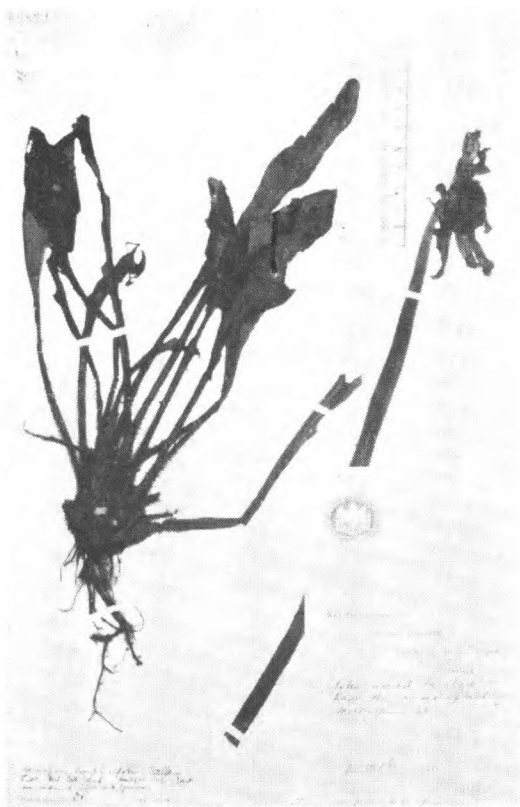
Meconopsis Pratii Prain
A. E. Pratt 525. (type) 西康打箭炉



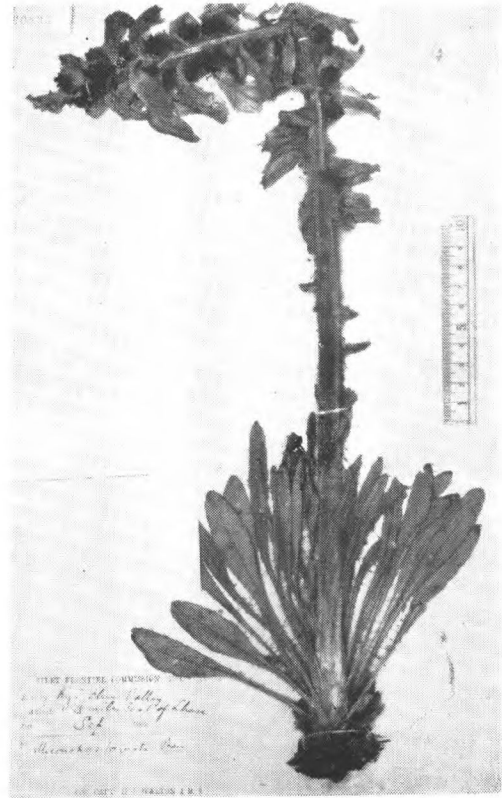
Meconopsis punicea Maxim.
Potanin 四川西部



Meconopsis quintuplinervia Regel
Przewalski 甘肃西宁



Meconopsis simplicifolia (D. Don)
G. Don 西藏东南



Meconopsis torquata Prain
H. J. Walton 西藏拉薩

罂粟屬 *Papaver* L.

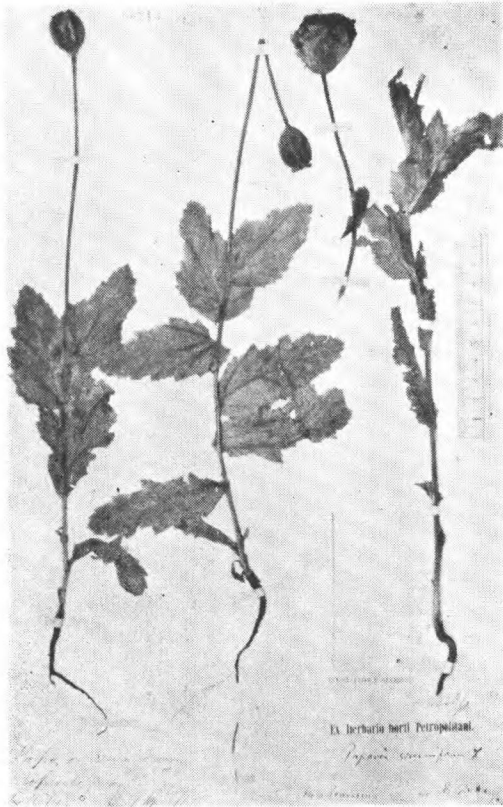


Meconopsis Wallichii HK. f. var. *fuscopurea* HK. f.
Forrest 1614. 云南瑞麗

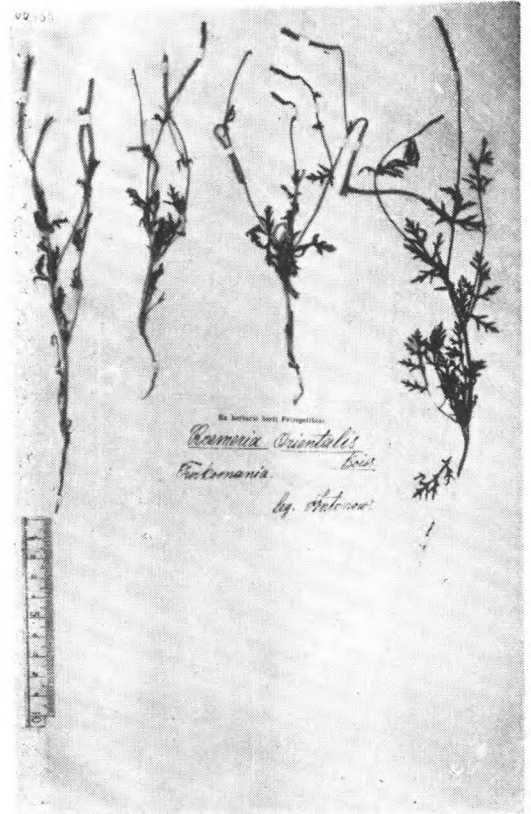


Papaver nudicaule L.
Karo 47a, 47c. Dahuria

Roemeria Medic.



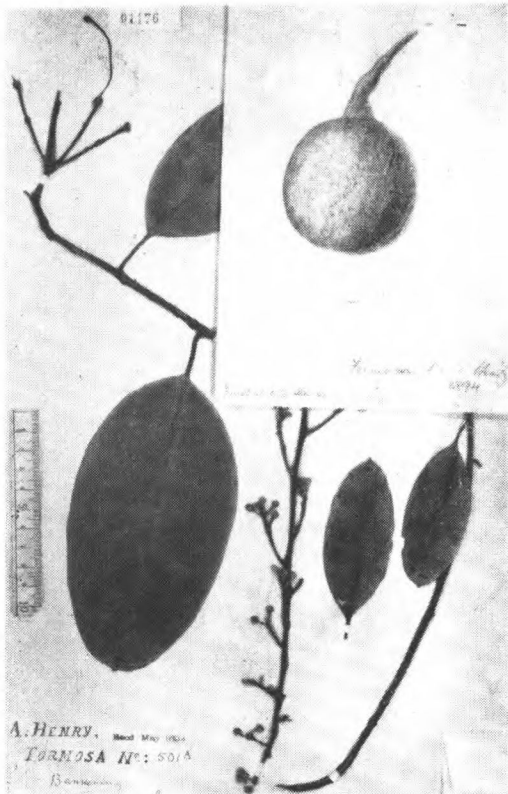
Papaver somniferum L.
Bretschneider 53. 北京



Roemeria dodecandra (Forsk.) Stapf
Antonow Turkomania.

57. 山柑科 Calycanthaceae

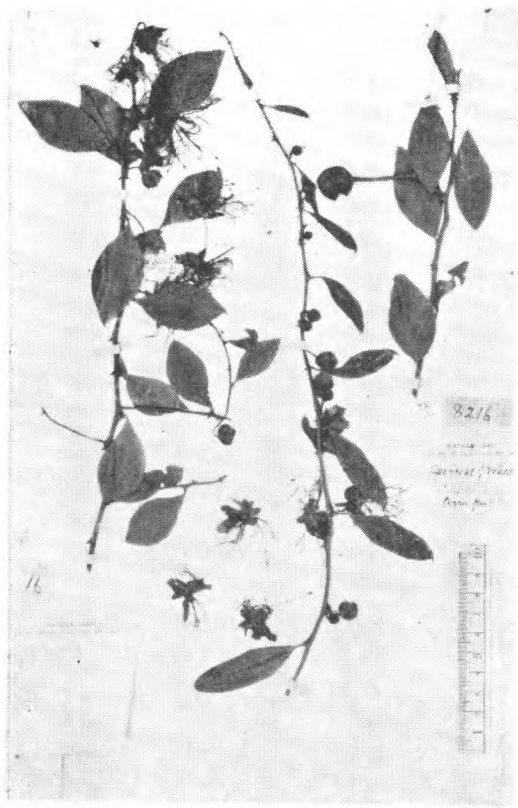
山柑屬 *Capparis* L.



Capparis formosana Hemsl.
Henry 501A. (type) 台湾



Capparis hainanensis Oliv.
B. C. Henry 7. (type) 海南



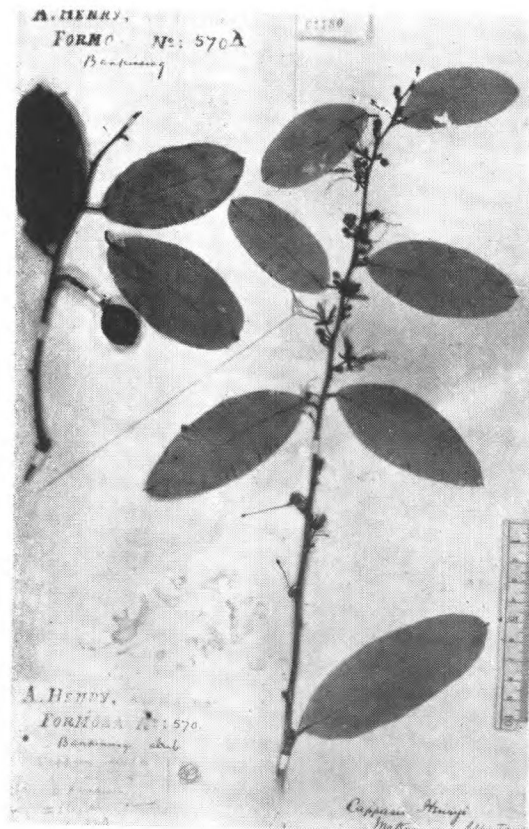
Capparis hastigera Hance
Henry 8216 海南



Capparis Henryi Matsum.
Henry 570. (cotype.) 台湾



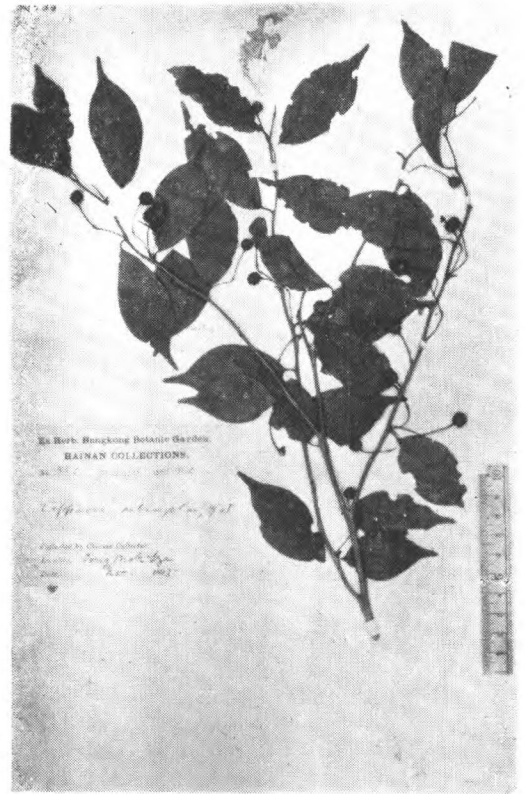
Capparis membranacea Gardn. et Champ
Wilford 296 广东



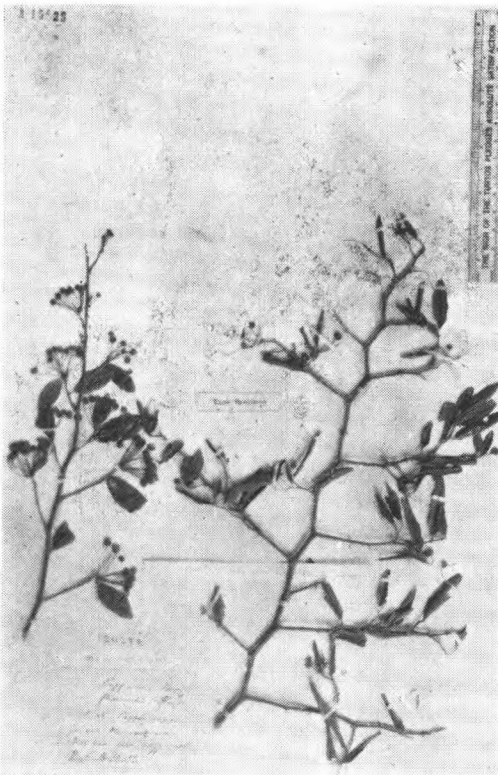
Capparis micracantha DC.
Henry 570A (fr., type) 台湾



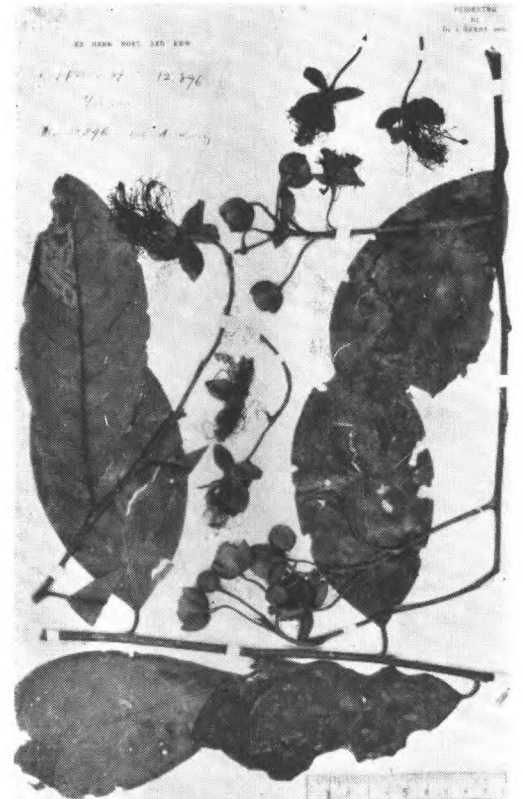
Capparis multiflora Hk. f. et Thoms.
Henry 11146 云南蒙自



Capparis sabaefolia Hk. f. et Thoms
Ford 351. 海南



Capparis sepiaria Linn.
T. L. Bullock in herb. Hance 20274
(type) 海南



Capparis yunnanensis
Craib. et W. W. Sm.
Henry 12896 (type) 云南

醉蝶花屬 *Cleome* L.

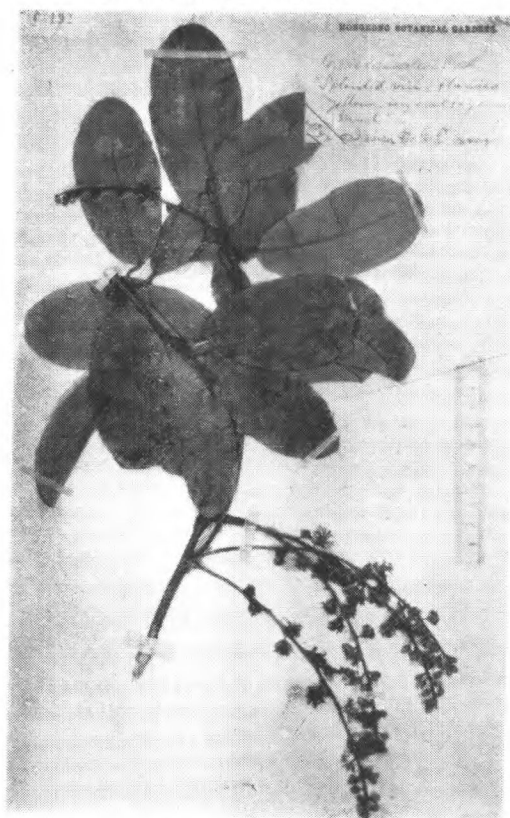
Cleome viscosa L.
Seemann 2462. 中国南部

蒜树屬 *Crataeva* L.

Crataeva religiosa Forst. var.
Nurvala (Ham.) Hk. f. Thom.
R. Swinhoe 海南

白花菜屬 *Gynandropsis* DC.

Gynandropsis gynandra (L.) Brig.
Henry 1505 湖北宜昌, Bretschneider 北京

罗志藤屬 *Stixis* Lour.

Stixis scandens Lour.
B. C. Henry 77. 海南

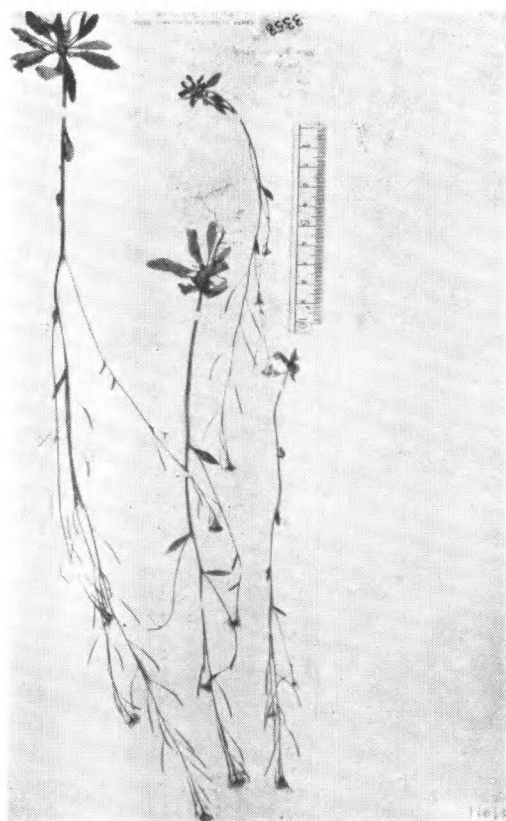
58. 十字花科 Cruciferae

香芥屬 *Alyssum* L.



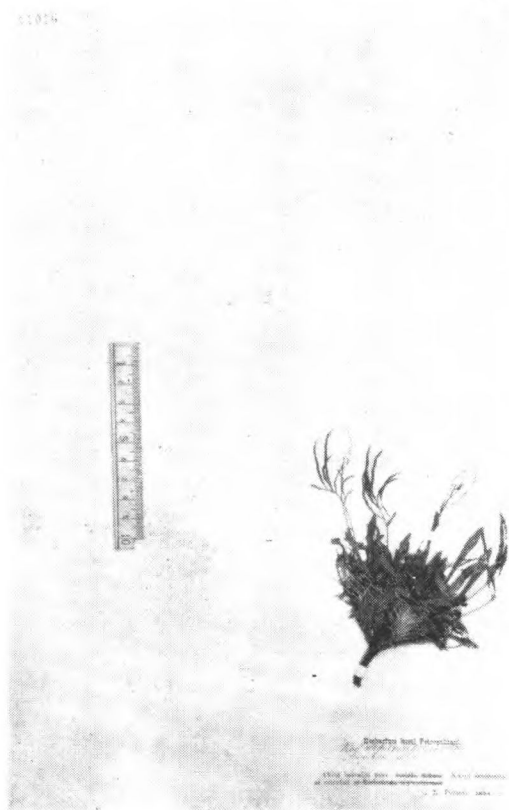
Alyssum lenense Adams
Potanin 蒙古北 Kosogol

拟南芥菜屬 *Arabidopsis* Heynhold

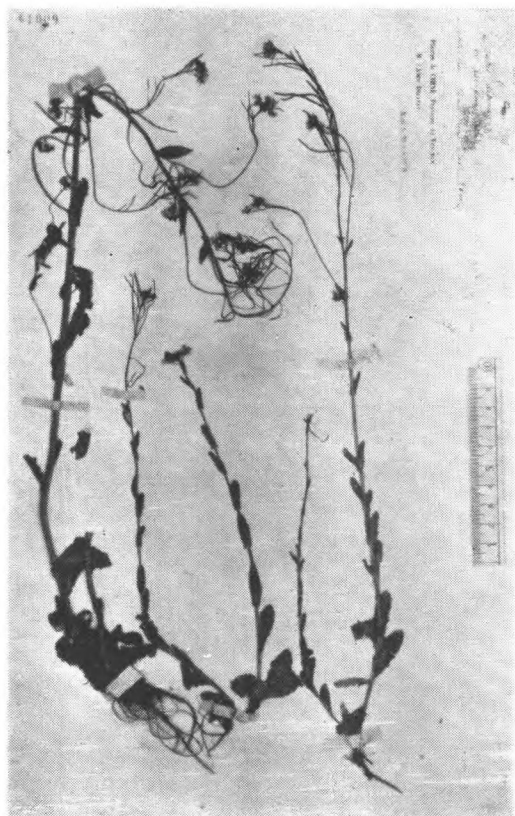


Arabidopsis thaliana (L.) Heynhold
Henry. 3358. 湖北宜昌

筷子芥屬 *Arabis* L.



Arabis alashanica Maxim.
Potanin 甘肃



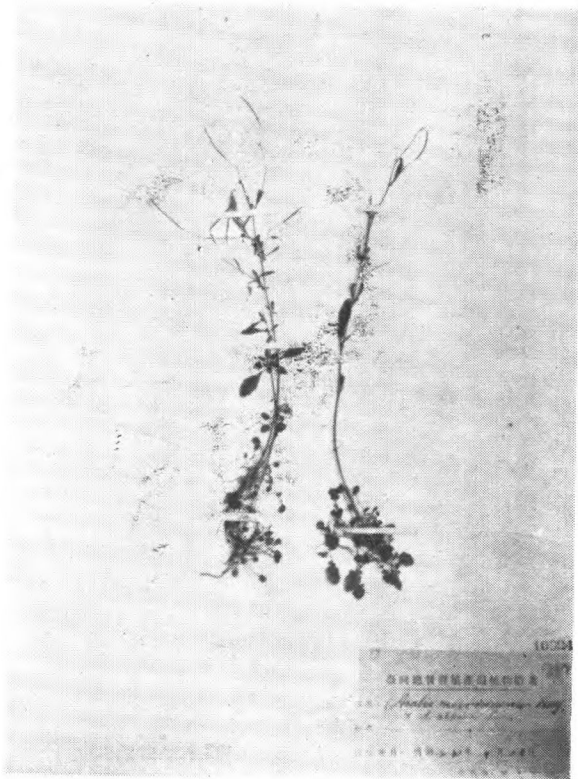
Arabis alpina L. var. *parviflora* Fr.
Delavay 云南黑山門



Arabis Charbonnelii Lévl.
Chanet. 1355 河北与山西交界处



Arabis hirsuta Scop. var.
borealis (Ardrz.) Fisch. et Mey. C.
Wilford 407 日本



Arabis morrisonensis Hayata
T. Kawakami et U. Mori 2234.
Mt. Niitaka, 台湾



Arabis pendula L.
Bullock 北京, James 东北