

The Oak





E

26

LOUISBURG COLLEGE

OPENED IN 1857 ON THE
SITE OF THE FRANKLIN
ACADEMY, CHARTERED 1787.
NOW A METHODIST JUNIOR
COLLEGE, COEDUCATIONAL.

Louisburg College



The Annual Publication of

Presents . . .

The Oak
1951

Foreword

Come, turn the pages of this book and release the flood-gate of memories that are yours to hold from the part of your life lived between September 11, 1950, to May 28, 1951.

May you find this small volume more than just a book of pictures, more than just a cross section of student life. Read between the lines and pages and find the story of yourself. Here may you find that tie which binds us to our Alma Mater—the tie of fellowship.

OCTAVIA BEARD, *Editor*

The Students of Louisburg College

Churches of Our Town and College



METHODIST CHURCH
REVEREND ALLEN C. LEE

BAPTIST CHURCH
REVEREND AUBREY TOMLINSON



EPISCOPAL CHURCH
REVEREND HARRY COBEY

Dedication

In little more than five years after a turmoil that shook the earth to its very depths, the world is again in conflict and chaos. More and more upon the lips and in the hearts of men is the timeless question: how can men learn to live together in peace?

Over all the doubts, the fears, the insecurity, the church remains an anchor, an answer in itself to this question. Since 1787—eleven years after the signing of the Declaration of Independence—this school as a church institution has worked toward the combining of education and religion in an effort to point out to its students the ways that man can survive and benefit others through his knowledge and beliefs.

This annual is dedicated with admiration to the part that this small junior college is playing in its own seemingly unimportant way to produce better citizens for a world that places its hope in the future.

We Honor
Dr. Samuel Perry Burt

Dr. Burt's contribution to the health of the college, the community, and Franklin County has been a great one. From 1899 to 1948 he practiced medicine in Louisburg; during this time he was for thirty years physician to the College and for five years Health Officer for Franklin County.

In appreciation of his long and outstanding service to our Alma Mater, we wish to express to him the sincere thanks of the student body of Louisburg College.



Administration and Faculty



Our President



TO THE CLASSES OF 1951, GREETINGS AND BEST
WISHES

May this copy of *THE OAK* be a constant reminder to you of the happy days spent at Louisburg College, and may your sojourn at Louisburg College prove throughout the years to be a blessing to you and to the College.

Cordially yours,
SAMUEL M. HOLTON



MARY BETHEA
Dean of Women

Miss Mary Bethea of Wilmington entered the Deanship of Women at Louisburg College in September of 1950. She is a graduate from Louisburg College and a charter member of Phi Theta Kappa honor fraternity. She has her Bachelor of Arts degree from Greensboro College and her Master's degree from Scarritt College, Tennessee. For the past several years she served as Director of Religious Education at Grace Methodist Church in Greensboro.



SCOTT BOYD
Dean of Men

Mr. Scott Boyd, Charlotte, has been Dean of Men at Louisburg College since the fall of 1947. He received his Bachelor of Arts degree from Elon College and his Master's degree from the University of North Carolina. In addition to his duties as Dean, he is head of the Department of Physical Education and coach of men's athletics.

Other Administration and Staff



Top picture:

GENEVIEVE PELTZ PERRY, *Treasurer*

Louisburg College; Columbia College, Maryland; Bowling Green Business University, Kentucky.

Second row, left to right:

RUTH GAMBLE BOYD, *Director of Public Relations*

Elon College, University of North Carolina.

VIRGINIA CRUMLEY LEEPER, *Registrar*

Longwood College, Virginia.

CHRISTINE HIGH HUDDY, *College Nurse*

R.N., C.P.H.N., Duke School of Nursing.

Third row:

ELSA CRAIG YARBOROUGH, *Librarian*

A.B., A.B. in L.S., University of North Carolina; Wake Forest College.

LILA TAYLOR PEARCE, *Dietitian*

B.S. in H.E., University of North Carolina.

MARY GUAGENTRY MATTHEWS, *Assistant Dietitian*

A.B., Radcliffe College, Mass.; M.A., Duke University.

Faculty



First row, left to right:

THOMAS CICERO AMICK, *Mathematics.*

L.I., George Peabody College; A.B., M.A., University of North Carolina; Ph.D., Central University; University of Chicago; University of Virginia.

ANNA BLUMENFELD, *Foreign Languages.*
Ph.D., Munich.

DANIEL P. SAYLER BOWERS, *Religious Education.*

B.A., Franklin and Marshall College; B.D., Duke University.

RUTH M. COOKE, *Physical Education.*

B.S., University of North Carolina.

Second row:

ETHEL B. FINSTER, *Science.*

B.A., Ball State Teachers College; M.A., University of Michigan.

SARAH ELIZABETH FOSTER, *Music.*

B.M., Greensboro College.

WILLIAM CARRINGTON GRETTER, JR., *Social Sciences.*

B.A., M.A., University of North Carolina.

ELIZABETH JOHNSON, *Mathematics.*

B.A., M.A., University of North Carolina.

Faculty



First row, left to right:

KATIE LAWRENCE, *Commercial Science.*
B.A., Longwood College.

WILLARD LEEPER, *Commercial Science.*
B.S., Longwood College; University of Florida; University of North Carolina.

RUTH WILLARD MERRITT, *English.*
B.A., Duke University; M.A., Scarritt College.

ISAAC DEANE MOON, *Music and Psychology.*
B.A., B.Mus., Asbury College; M.A., University of Kentucky

Second row:

NELLIE TIPTON MOON, *Fine Arts.*
B.A., University of Wichita.

C. RAY PRUETTE, *Chemistry and Physics.*
B.A., M.A., East Carolina Teachers College.

BETTY WILLIAMS TARPEY, *English.*
B.A., University of North Carolina; M.A., Duke University.

We

Go

To

Class





Left to right: Ray Hood, Secretary-Treasurer; Jean Boney, Vice-President; Robert Linville, President.

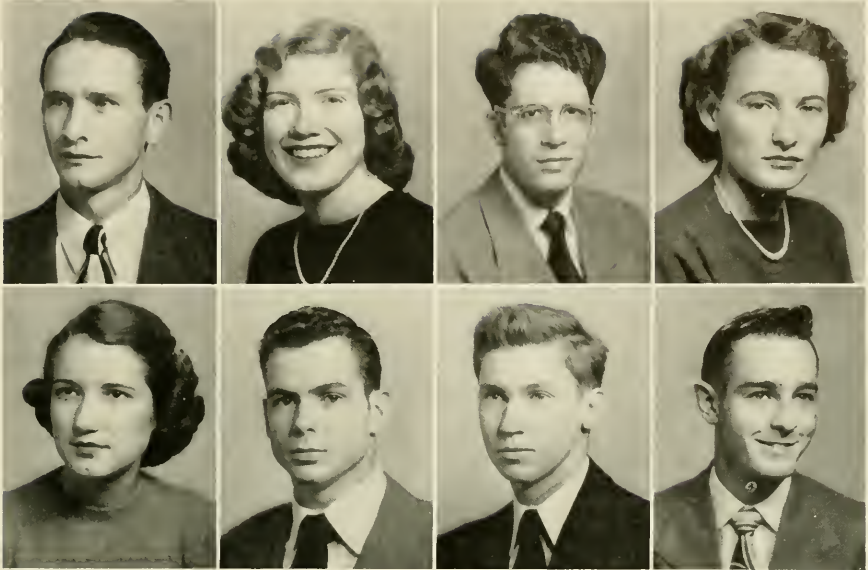
Representing

the

Senior

Class

Seniors



First row, left to right:

FREDDY L. ALFORD, Bunn
Glee Club; Y.M.C.A.

OCTAVIA BEARD, Bailey
Phi Theta Kappa, Secretary; Student Council, Treasurer; *Columns* Staff; THE OAK, Editor; Y.W.C.A.

HARVEY LAYTON BEDSOLE, Tar Hill
Delta Psi Omega; International Relations Club; Student Council; *Columns* Staff, Business Manager; Y.M.C.A.

ETHEL JEAN BONEY, Clinton
Monogram Club, Vice-President; Basketball; Dramatics Club; *Columns* Staff, Women's Sports; THE OAK Staff; Y.W.C.A., Publicity Chairman; Commercial Club, President; Alpha Pi Epsilon, Social Chairman; Senior Class, Vice-President.

Second row:

JOYCE WAYNER BOONE, Nashville
Monogram Club; Glee Club; Dramatics Club; Delta Psi Omega; Phi Theta Kappa, Vice-President; International Relations Club; *Columns* Staff, Editor; Y.W.C.A.

GEORGE LUBY BOYETTE, Newton Grove
Glee Club; Y.M.C.A.

JOSEPH SWANSON BRASWELL, Durham
Monogram Club; Basketball; Y.M.C.A.

ROBERT HOYLE BRIDGES, Zebulon
Basketball; Commercial Club; Y.M.C.A.

Seniors



First row, left to right:

LINDBERGH LONG BROWN, Beulaville

International Relations Club; Student Council, President; Y.M.C.A.

ANGELO PAUL CAPPARELLA, JR., Tuckahoe, New York

Band Director; Y.M.C.A.; Delta Psi Omega; Dramatics Club.

ERNEST JOSEPH DANIELS, Wilmington

Basketball; Dramatics Club; Beta Phi Gamma; International Relations Club;

Cheerleader; Band; *Columns*, Editor 1949-50; Baseball; Y.M.C.A.

CAROL WYNN DRAKE, Newsoms, Va.

Monogram Club, Secretary; Basketball Manager; Dramatics Club; Delta Psi Omega, Cast Director; International Relations Club; *Columns* Staff; Y.W.C.A., Program Chairman.

Second row:

JOHN VERNON EVANS, Magnolia

Delta Psi Omega; International Relations Club; Y.M.C.A.

VIRGINIA ANNE FEATHERSTON, Roxboro

Glee Club; Dramatics Club, Vice-President; Delta Psi Omega; Beta Phi Gamma, President; International Relations Club; THE OAK Staff; Y.W.C.A.; Religious Worker's Club.

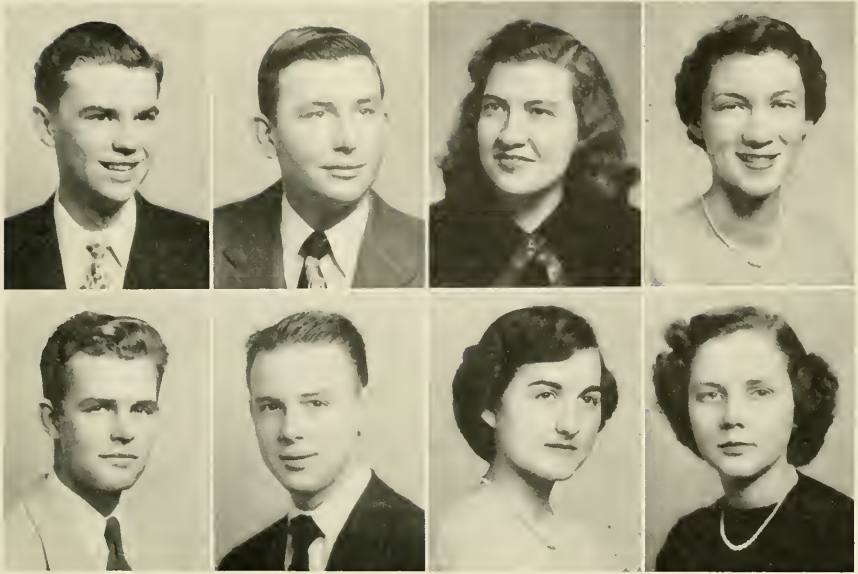
BLANCHE MARIE FOGLEMAN, Pittsboro

Glee Club; Student Council, Secretary; *Columns* Staff, Make-up Manager; Y.W.C.A.

MARION BENNIE GENTRY, Roxboro

Glee Club; Commercial Club; Y.M.C.A.

Seniors



First row, left to right:

CLYDE PLEASANT GENTRY, JR., Roxboro

Y.M.C.A.: Commercial Club.

JOSEPH WALLACE GOODWIN, JR., Edenton

Y.M.C.A.

ANDRA JAY HAMILTON, Durham

Dramatics Club; Delta Psi Omega; Phi Theta Kappa, President; International Relations Club; *Columns* Staff, Managing Editor; Y.W.C.A.

MARGARET SUZANNE HICKS, Charlotte

Y.W.C.A.: International Relations Club.

Second row:

RAY SAUSMAN HOOD, Woodbury, New Jersey

Band; Student Council; Senior Class Secretary.

EDWARD GREY HUNT, Semora

Dramatics Club; Delta Psi Omega; Cheerleader; Student Council, Secretary-Treasurer; THE OAK Staff; Y.M.C.A.; Commercial Club

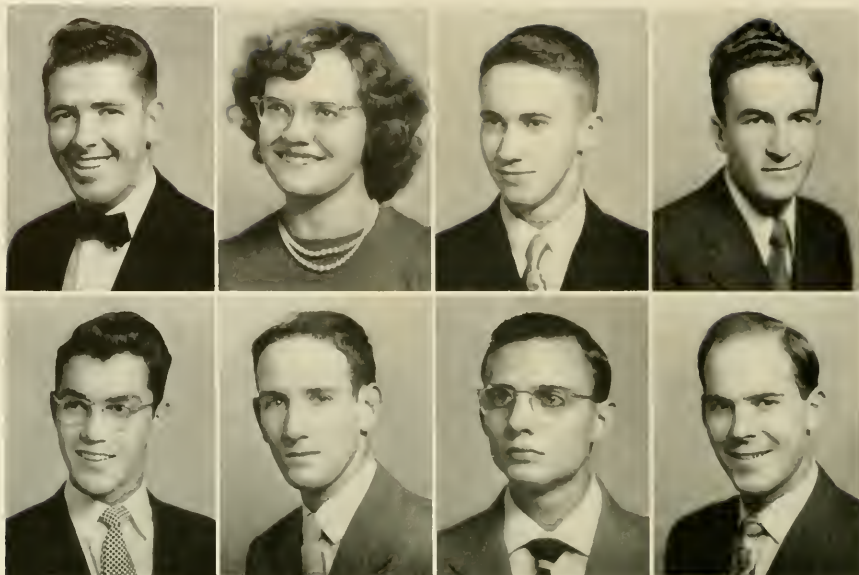
EULA ELIZABETH HUX, Weldon

Monogram Club, Treasurer; Basketball; Phi Theta Kappa; International Relations Club; Student Council; THE OAK Staff; Y.W.C.A., President; Representative at World Student Conference, Urbana, Illinois.

JANET CHRISTINE JOHNSON, Elizabethtown

Y.W.C.A., Recreation Chairman; International Relations Club; Phi Theta Kappa; Glee Club.

Seniors



First row, left to right:

ULYSSES RAY JOHNSON, Zebulon
Baseball; International Relations Club; Y.M.C.A.

MARIETTA JOLLIFF, Belvidere
Glee Club; Phi Theta Kappa; Dramatics Club; International Relations Club;
THE OAK Staff; Y.W.C.A.

JOHN PAUL JONES, Henderson
Y.M.C.A.

ROBERT HESTER JONES, Louisburg
Alpha Pi Epsilon.

Second row:

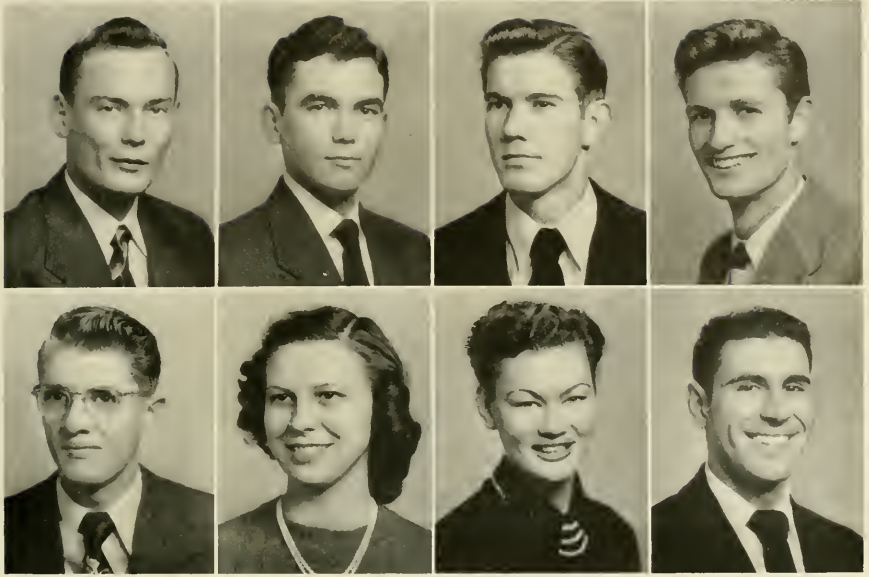
RUSSELL PASCHAL JONES, Salemburg
Monogram Club, President; Basketball; International Relations Club; Student
Council, Vice-President; Track Team; Boxing Team; Baseball; Y.M.C.A.

MILTON WYNN KING, Essex
Glee Club; Delta Psi Omega, Secretary-Treasurer; THE OAK Staff, Business
Manager; Y.M.C.A.; Phi Theta Kappa.

JAMES E. LAYDEN, Hertford
International Relations Club; Y.M.C.A.

BLANEY EARL LEE, Durham
Glee Club; Y.M.C.A. Cabinet; International Relations Club, President; Student
Council.

Seniors



First row, left to right:

MAX RUDOLPH LEWIS, Fremont
International Relations Club; Y.M.C.A.

GLENN NEWMAN LILLEY, JR., Gatesville
Monogram Club, Vice-President; International Relations Club; Baseball;
Y.M.C.A.

ROBERT LINDSAY, Clinton
Dramatics Club; Y.M.C.A.; Commercial Club.

ROBERT FRANKLIN LINVILLE, Raleigh
Basketball, Band, Student Council, Y.M.C.A.; Senior Class President.

Second row:

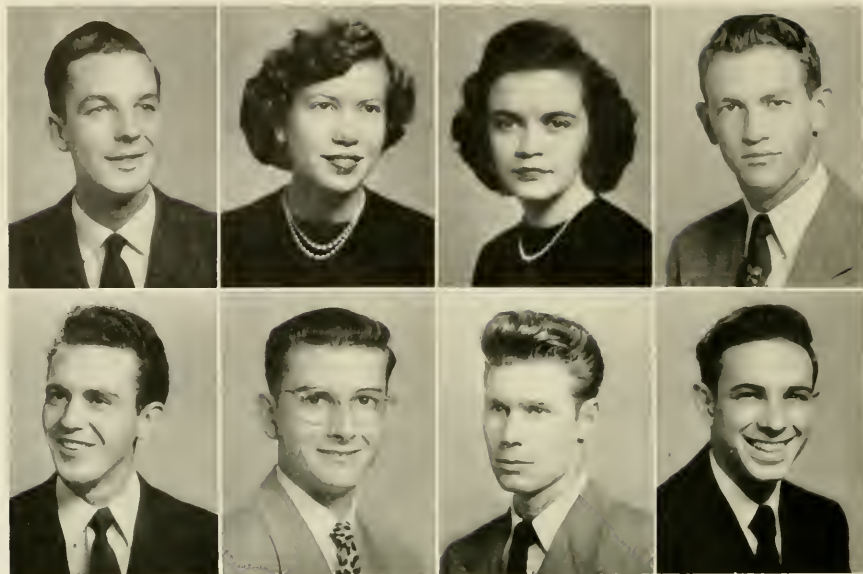
ROBERT KENNETH MELVIN, Tar Heel
International Relations Club; Y.M.C.A.

JANE HOOPER MIDGETTE, Cary
Monogram Club, President; Basketball, Dramatics Club; Student Council, Vice-
President; Y.W.C.A.

HELEN JEAN MOORE, Moncure
Dramatics Club, President; International Relations Club; Y.W.C.A.; Commer-
cial Club.

JOSEPH LESTER NIQUETTE, Holyoke, Massachusetts
Glee Club; Dramatics Club; Delta Psi Omega; Beta Phi Gamma; Student Coun-
cil; *Columns* Staff, Sports Editor; Y.M.C.A., President.

Seniors



First row, left to right:

FELTON BAKER PARKER, Weldon

Glee Club; Dramatics Club; Delta Psi Omega, Head Usher; Y.M.C.A., Treasurer.

JOYCE PARKER, Maysville

Glee Club; International Relations Club; Student Council, President; *Columns* Staff; Y.W.C.A.; Commercial Club.

KATHRYN WARD PAUL, Pittsboro

Glee Club; Phi Theta Kappa, Treasurer; Student Council, Past President; *Columns* Staff; Y.W.C.A.; Marshal; May Court.

ROBERT GERALD PHELPS, Aulander

Monogram Club, Secretary-Treasurer; Baseball, Manager; Y.M.C.A.; Commercial Club.

Second row:

JOHN LOUIS PORTER, Durham

Glee Club; International Relations Club; Student Council; Y.M.C.A.

LEON BENNETT ROYAL, Salemburg

International Relations Club; Y.M.C.A.

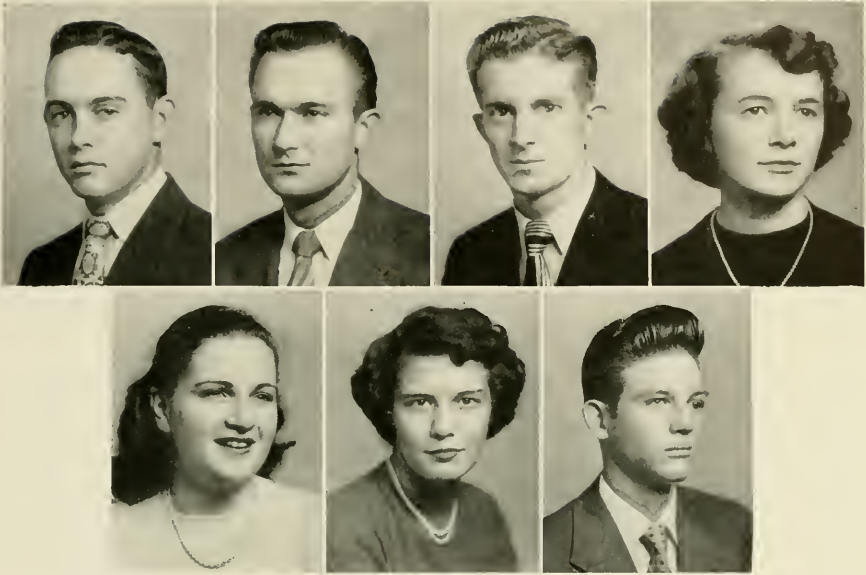
EDWARD ROSCOE SALTER, Atlantic

Student Council; Y.M.C.A.

JAMES AWTRY SEAY, JR., Goldsboro

Monogram Club; Basketball, Manager; *Columns* Staff; Y.M.C.A.

Seniors



First row, left to right:

JOSEPH LEWIS SOUTHERLAND, JR., Henderson
Baseball; Y.M.C.A.

JAMES BRAXTON SPEIGHT, Sunbury
Monogram Club; Basketball; Dramatics Club; Delta Psi Omega; *Columns* Staff;
Baseball; Y.M.C.A.; Religious Worker's Club, Vice-President.

LARRY STEWART, Benson
Monogram Club; Basketball; International Relations Club; Baseball; Y.M.C.A.

DOROTHY MARIE SWINDELL, Elizabeth City
Monogram Club; Glee Club; Band; Student Council, House President; Y.M.C.A.,
Secretary; Religious Worker's Club, President.

Second row:

FRANCES BURKE TAYLOR, New Bern
Dramatics Club; Y.W.C.A.

LOYCE JANET WHITE, Elizabeth City
International Relations Club; Y.W.C.A.

EDWARD MARTIN WILKINS, Lumberton
International Relations Club; Y.M.C.A.

Not Pictured: JAY FOGLEMAN FRANCIS PLEASANTS AND VIRGINIA SPAKE



Left to right: BOBBY GODWIN, Vice-President; BARBARA FORBES, Secretary; SIDNEY EPPERSON, Treasurer; HARVEY JOHNSON, President.

Representing

the

Junior

Class

Juniors

Eunice Hattie Abbitt
Roxboro



William Elmo Alford
Zebulon

Mary Lois Allred
Candor



James Floyd Ammons
Fayetteville

Billie Mae Aycock
Durham



James Coleman Ayscue
Henderson

Horace William Baker, Jr.
Zebulon



Bryant Ordell Balkcum
Clinton

Alex Bass
Roxboro



Paul Gully Bass
Nashville

Edith Grey Bennett
Erwin



William Nelson Best
Goldsboro

Juniors

Norman Perry Bobbitt
Littleton



Nancy Lee Boone
Nashville



Mabel Rebecca Boone
Nashville



Roland Scott Braswell
Spring Hope



Peggy Louise Breedlove
Henderson



Ella Gray Brock
Dunn



William Orville Brogden, Jr.
Durham



Ann Jeanette Brown
Scotland Neck



Henry James Bryan
Garner



Richard Luby Cannon
Vanceboro



Virginia Dare Carter
Laurel Hill



Anna Muriel Carter
Louisburg



Juniors

Mary Ruth Clark
Vass



Lucy Welch Claytor
Augusta, Georgia

Ella Louise Cohoon
Columbia



Carrie Camelia Compton
Cedar Grove

Charles A. Creekmore
Elizabeth City



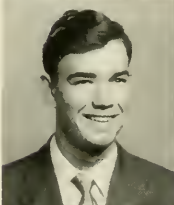
Richard Harris Daniels
Efland

Mary Elizabeth Davis
Newport



Bobby Deaver
Lake Dale

Bryant Jack Denning
Mount Olive



Bonnie Evon Dixon
Vanceboro

Ellen Brooks Eason
Stantonsburg



Anna Elizabeth Edgerton
Littleton

Juniors

Samuel Holmes Elliott
Elizabeth City



James Sidney Epperson
New Bern

Robert Vernon Fleming
Henderson



Barbara Jean Forbes
Shiloh

Pete William Franklin
Cary



Bobby Eugene Godwin
Erwin

Eula Mae Godwin
Linden



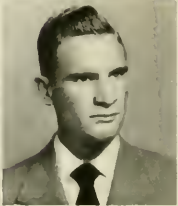
Julian Gonzalez
Camaguay, Cuba

Willis Allen Goodrum
Charlotte



Pearl Burnette Grant
Jackson

Jacqueline Anne Hall
Roxboro



James Thomas Hall
Lumberton

Juniors

Joy Ann Hamlin
Roxboro



Barbara Ann Harrell
Goldsboro

Lemuel Robert Harris, Jr.
Warrenton



Margaret Jane Harris
Roanoke Rapids

Lota Leigh Harrison
Old Trap



Alma Ann Hill
Varina

Davetta Nan Hill
Bridgeton



Dorothy Eloise Hollowell
Goldsboro

Rebecca Angeline Hoyle
Henderson



Mary Willis Ingram
Louisburg

Donald Jaekel
Detroit, Michigan



Jewel Ann Jernigan
Ahoskie

Juniors

Harvey Bynum Johnson
Fayetteville



Philip Rosser Johnson
Raleigh

Robert Blanton Jones
Clayton



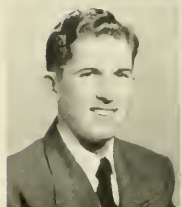
Stewart Jones
Goldsboro

Kathryn Estell Joyner
Louisburg



Graham C. Kennedy
Louisburg

Lynn Gray King
Dublin



Margaret Roselyn Lee
Four Oaks

Patsy Joyce Leonard
Louisburg



Dallas Malone Long
Hillsboro

Norma Grey McCullen
Mount Olive



Daphne Lou McKenzie
Roseboro

Juniors

Virginia Ruth McLamb
Fayetteville



James David McPhail
Tomahawk

June Lee Mason
Oriental



Atlee Glenn Matthews
Nashville

Leonard Edward Mayo
Eureka



Rudolfo Mier Y Teran
Lima, Peru

Jennette Miller
Hillsboro



Vivian Gray Miller
Elizabeth City

Hilda Elizabeth Modlin
Ahoskie



Ann Elizabeth Monk
Roxboro

Patricia Jean Morton
New Harlow



Billie Jean Mulchi
Norlina

Juniors

George Alton Munn
West End



John Robert Nelson
Prospect Hill

Margaret E. Nunnamaker
Durham



Robert Erwin Oakes
Weldon

Leslie Lee Parker
Trenton



Velma Frank Parker
Whitakers

George Parkin
Swansboro



Harold Roland Parrish
Smithfield

Glenn Levoy Pate
Erwin



Tyrus Ollie Perdue
Henderson

Elbert Harvey Phelps
Scotland Neck



Alice Juanita Pritchard
Ahoskie

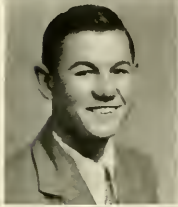
Juniors

Jay Andrew Proescher
Cary



Lynda Earle Pulliam
Roxboro

John William Reavis
Henderson



Jean Roberts
Cedar Grove

Cara Blanche Robinson
Candor



Annie Lou Sasser
Mount Olive

Pat Cotton Sessoms
Ahoskie



Joseph W. Shearin
Louisburg

Nathan Calton Spivey
Hertford



Glendel Ulus Stephenson
Erwin

Eleanor Florence Stewart
Benson



Paul Stone
Louisburg

Juniors

Jack Sutton
Mount Olive



Patsy Adair Taylor
Edenton

Winifred Louise Taylor
Seaboard



June Ruth Tew
Erwin

Florence Edith Turner
Spring Hope



Eugene Robert Turner
Fayetteville

Geraldine Upton
Camden



James Marvin Vaughan
Scotland Neck

McCoy Douglas Wall
Youngsville



Bernard Floyd Walters
Louisburg

Hannah Lou Wharton
Merritt



Eva Carol Wheelers
Creedmoor

Juniors

Patty Gertrude Whitehead
Scotland Neck



Thelbert Allen Whitt
Roxboro

Peggy Lucretia Wilkins
Roxboro



Josephine Williams
Dunn

Wanda Fay Williamson
Clinton



James Millard Willis
Davis

Ann Delores Willoughby
Ahoskie



Juanita Wood
Spring Hope

Mary Elizabeth Woody
Oxford



Linzy Layne Young
Louisburg

Not pictured: William Melton Bryan, William Cancel Davis, Jasper Ellis, William Eubank, Roy Hilton, Cronly Hunt, Jay Jeffries, Charles Jones, Robert King, Henry Medlin, B. T. Perry, Edsel Privette, Leslie Rowe, Jr., Nellie Stone, Audrey Todd, Robert Wiggins, Jr., Bill Chestnut, Theodore Hillsley, John Landstrom, Roswell Sanderlin, Barbara Thach, H. G. Thach, Horace Hill, Leslie Rowe.

The Sentinel



Activities





GLEE CLUB

We Like to Sing

Thirty-five voices strong, the Glee Club provides an outlet for students musically inclined. Any student with vocal talent and an interest in vocal music may acquire membership through tryouts.

Sidney Epperson, *President*

Rebecca Boone, *Librarian*

Jean Nunnamaker, *Vice-President*

Miss Sarah Foster, *Director*

Show Business

Whether to pull a curtain, to paint scenery, to execute a skillful job of make-up, or to play a role on the stage, the members of the Dramatics Club just like to have a hand in show business. Membership is open to all students who participate.

Jean Moore, *President*

June Tew, *Secretary*

Virginia Featherston, *Vice-President* Barbara Harrell, *Treasurer*

Mrs. Betty Tarpey, *Sponsor*

DRAMATICS CLUB





Here Is Our Y Cabinet

Standing, left to right: Eula Hux, Y.W.C.A. President; Joe Niquette, Y.M.C.A. President; Blaney Lee, Program Committee; Sidney Epperson, Y.M.C.A. Vice-President; Seated: Carol Drake, Program Committee; J. B. Speight, Recreation Committee; Felton Parker, Y.M.C.A. Treasurer; Christine Johnson, Recreation Committee; Jean Boney, Publicity Chairman; Dorothy Swindell, Y.W.C.A. Secretary; Pearl Grant, Y.W.C.A. Vice-President.

Sadie Hawkins Day, the Easter service, the King and Queen of Hearts Dance, the Y banquet—these and many other forms of worship and recreation are sponsored, planned, and executed by the joint Y.M. and Y.W.C.A. The largest and most active organization on the campus, the Y seeks to create better citizens through religious and recreational programs and activities.



. . . Our Religious and Social Workers Club

To share ideals of fellowship and to learn more effective ways of service, the students planning to enter religious and social work have united to form the Religious and Social Workers Club.

Dorothy Swindell, *President*

J. B. Speight, *Vice-President*

Pearl Grant, *Secretary-Treasurer*

Dan Bowers, *Sponsor*

We Present Our I.R.C. Officers

Center: Blaney Lee, President; Right: Floyd Ammons, Vice-President; Left: Tyrus Perdue, W. Carrington Gretter, Sponsor.



THE INTERNATIONAL RELATIONS CLUB

To study not just the problems of our state or nation but those affecting the world is the purpose of the International Relations Club. Students thus gaining an understanding of these problems are led into a better knowledge of their responsibilities as citizens.

Here We Are: The Commercial Club

Jean Boney, *President*

Billy Alford, *Treasurer*

Thelbert Whitt, *Vice-President*

Miss Katie Lawrence, *Sponsor*



One of the largest organizations on the campus, the Commercial Club is open to any student enrolled in the Commercial Department. The Club is both a social and an educational group.

We Work For the General



THE WOMEN'S STUDENT COUNCIL

<i>President</i>	Joyce Parker
<i>Vice-President</i>	Jane Midgette
<i>Secretary</i>	Marie Fogleman
<i>Treasurer</i>	Octavia Beard
<i>House President</i>	Dorothy Swindell
<i>Senior Representative</i>	Eula Hux
<i>Junior Representative</i>	Geraldine Upton

Entrusted to the hands of the Women's Student Council is the student government of the women of Louisburg College. The council, student-elected, acts to maintain the ideals of the school.

Welfare of the Student Body

President Lindbergh Brown
Vice-President Pat Jones
Secretary-Treasurer Grey Hunt
Senior Representatives Robert Linville, Roscoe Salter,
Harvey Bedsole, Ray Hood
Junior Representatives Bobby Oakes, Floyd Ammons, Blaney Lee
Honorary Member from Y.W.C.A. Joe Niquette

The Men's Student Council is the student voice of the men enrolled at Louisburg College. The council works to maintain high standards of conduct and wholesome campus relationships.

THE MEN'S STUDENT COUNCIL



The Honorary Fraternities



Left to right, top row: Harvey Bedsole, Joyce Boone, Angelo Capparella, Carol Drake, Cast Director; Virginia Featherston.

Second row: Andra Hamilton, Grey Hunt, Milton King, Joe Niquette, Felton Parker, J. B. Speight. Mrs. Bettie Tarpey, *Sponsor.*

DELTA PSI OMEGA

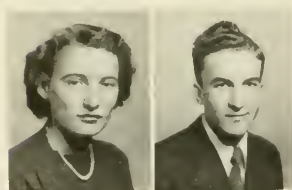
To be eligible for membership in Delta Psi Omega, the junior college division of Alpha Psi Omega, national dramatics fraternity, a student must have played a major role in one play or supporting roles in two plays, or do efficient work as a stage hand or make-up artist.

This is the newest fraternity on the Campus.



ALPHA PI EPSILON

Membership in Alpha Pi Epsilon, national honorary secretarial fraternity is open to all students enrolled in the Commercial Department who make an average grade of "B," and who are unanimously elected by the members.



Jean Boney, Hester Jones, *President.*

Mrs. Genevieve Perry, *Sponsor.*



Left to right: Ernest Daniels, Virginia Featherston, President; Joe Niquette, Miss Ruth Merritt, Sponsor.

BETA PHI GAMMA

Beta Phi Gamma is a junior college journalistic fraternity, affiliated with Alpha Phi Gamma. The Louisburg College Rho Chapter was organized in 1940. Students with creditable scholarship records who are outstanding in work with the college newspaper or the annual are eligible for membership.



PHI THETA KAPPA

The Gamma Upsilon Chapter of Phi Theta Kappa was founded at Louisburg College in 1938. It is a national honorary junior college scholastic fraternity for students of Liberal Arts. Acceptance of members is based upon scholastic standing, good citizenship, and leadership.



Left to right, top row: Octavia Beard, Joyce Boone, Marie Fogleman, Andra Hamilton, President; Eula Hux. Second row: Christine Johnson, Marietta Jolliff, Milton King, Kathryn Ward Paul, Miss Elizabeth Johnson, Sponsor.





Octavia Beard, *Editor*

Milton King, *Business Manager*

Philip Johnson, *Associate Business Manager*

W. Carrington Gretter, *Faculty Adviser*

The Oak For 1951

The job of publishing an annual is never an easy one, but a co-operative staff makes a heavy task lighter. Your OAK staff is composed of the following members, most of whom have solicited ads, typed, run errands, or just "fetched and carried": Virginia Featherston, Willis Goodrum, Marietta Jolliff, Jean Nunnamaker, Jean Boney, Jean Mulchi, Eula Hux, Pearl Grant, Donald Jackel, and Ann Brown.





Columns

Columns, the college newspaper, is published five times a year. Now in its tenth year, *Columns* has as its goals the recording of student life, the furnishing of an incentive for a good school spirit, and the offering of an opportunity to the students and particularly to the staff members a chance to gain some skills of journalism.

The staff: Jimmy Willis, Andra Hamilton, Floyd Ammons, Patty Sessoms, June Tew, Eugene Turner, Joe Niquette, Margaret Lee, Jewel Jernigan, Jay Proescher, Virginia Carter, Marie Fogleman, Sidney Epperson, Eunice Abbitt, Joyce Parker, Patsy Taylor, and Buck Fleming.

Joyce Boone, *Editor*

Harvey Bedsole, *Business Manager*

Miss Ruth Merritt, *Faculty Adviser*



Monogram Clubs



Left to right: Jean Boney, Fola Hux, Carol Drake, Jane Midgett, President.

The Monogram Clubs are composed of the men and women who have earned a letter by active participation in sports or who have acted as managers of the teams.

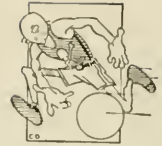


Left to right, top row: Pat Jones, President; Glenn Lilley, Gerald Phelps. Bottom row: J. B. Speight, Swanson Braswell, Larry Stewart.

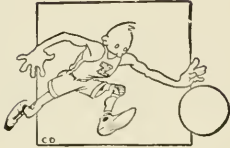
The New Gymnasium



Hear



Us



Cheer!

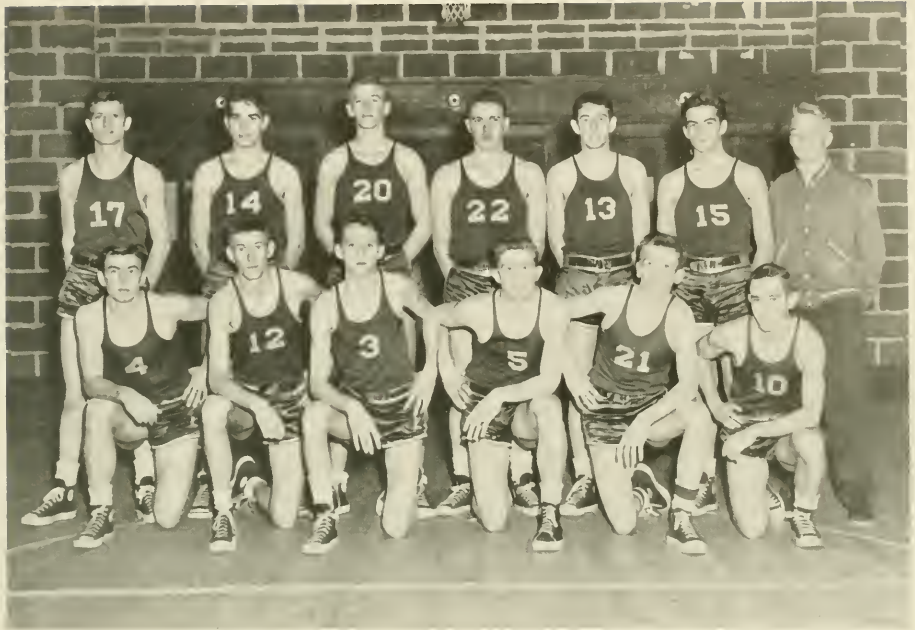


Left to right: Billie Aycock, Grey Hunt, Ann Brown, Ann Willoughby.

Not pictured: Virginia McLamb.

Let's Go, Louisburg!

Basketball



Back row, left to right: Bobby Linville, f; Jimmy McPhail, f; Glendel Stephenson, c; Ed Privette, c; Buck Fleming, f; John R. Nelson, g; Bryant Balkcum, *Manager*.
 Front row: Jimmy Bryan, f; Jay Fogleman, f; Bill Brogden, f; Bobby Godwin, g; Graham Kennedy, g; Bobby Bridges, g.

BASKETBALL SCHEDULE

Louisburg College 1950-51

V
a
r
s
i
t
y
T
e
a
m

December	1	Wilmington
"	4	Pembroke
"	6	**Pfeiffer
"	8	EMI
"	11	**Pembroke
"	13	**Wingate
"	19	Campbell
January	3	State Freshmen
"	5	**Chowan
"	8	**Wake Forest Freshmen
"	10	Pfeiffer
"	13	**Oak Ridge
"	16	**Campbell
"	25	Oak Ridge
"	27	**PJC
"	30	**EMI
February	2	**Wilmington
"	6	Duke Freshmen
"	10	PJC
"	13	Wake Forest Freshmen
"	14	Chowan

**Indicates home games in Louisburg College Gymnasium.



Basketball—Junior Varsity Style

Left to right: Joe Southerland, g; Bobby Bridges, g; Jack Denning, f; Swanson Braswell, f; Sneak Long, c; Paul Stone, f; Larry Stewart, g; Jay Fogleman, f; Nelson Best, g; Bryant Balkcum, Manager.

Scott Boyd, Director of Men's Athletics
Ruth Cooke, Director of Women's Athletics



*Coeds
In
Action*



Tennis
Softball
Basketball
Golf
All work and no play?
NEVER!

The Louisburg College Gymnasium

A reality now—no longer a mere dream—is the new Louisburg College Gymnasium. Erected by means of funds raised through the Methodist College Advance, a campaign for Methodist Colleges a few years ago, the building stands a massive and beautiful structure which cost around \$160,000.

M. Stuart Davis, who is a Louisburg alumnus and whose father and sister were both presidents of Louisburg College, was the architect. The cornerstone of the building was laid October 29, 1949, by W. W. Peele, resident bishop of the Richmond area of the Methodist Church.

The gymnasium is 112 feet long, 90 feet wide, and seats approximately 1,300. It has a playing floor of maple block, a stage 40 by 25 feet, dressing rooms, showers, lounges for both men and women, offices for the directors of athletics, a classroom 40 by 25 feet, and a separate heating plant.

Today, though the building is complete, furnishings have partially been provided. It is hoped that through gifts of friends the yet-needed equipment can be secured.

Through The Arch



Homecoming King and Queen

Miss Ann Willoughby and Mr. Robert Vernon Fleming





Homecoming Dance Personalities

Run For Your Lives! Sadie Hawkins Day



Events We Remember



THE FASHION SHOW

THE SUNDAY SCHOOL BANQUET



THE HALLOWEEN PARTY



May Day 1950

Queen Virginia Brittain King Taylor Copping
Rachel Modlin, *Maid of Honor*
D. A. Britt, *Escort*

Glennor Culpepper
Jean Bradley
Betty Mauldin
Kathryn Ward Paul
Claire May Broome
Lila Paschal
Daisy Byrd
Marie Edmondson
Audrey Marsh
Christine Johnson

Joe Niquette
Pat Jones
Richard Ferrell
Duffy Paul
Tommy Patterson
Gerald Phelps
Swanson Braswell
Gene Johnson
Robert Linville
Ben Pena

Student Life







Bedlam, or Nine Months In A Dormitory



The Beginning and the End



LOUISBURG COLLEGE

Under Control

NORTH CAROLINA METHODIST CONFERENCE

Accredited by

THE STATE DEPARTMENT OF EDUCATION
NORTH CAROLINA COLLEGE CONFERENCE
UNIVERSITY OF NORTH CAROLINA



OFFERING TWO YEARS TERMINAL COURSES

— in —

COMMERCIAL SCIENCE
RELIGIOUS AND SOCIAL SECRETARIES

— and —

Two-Year Preparatory Courses Leading to Degrees in Senior Colleges
in Engineering, Agriculture, Dentistry, Commerce,
and Liberal Arts



For Details Write

LOUISBURG COLLEGE : Louisburg, N. C.

LOUISBURG, N. C.

— is —

RICH IN HISTORY, HEALTH, AND
HOSPITALITY

There is not a more ideal place of residence in the world for a student than Louisburg. There exists here at all times an atmosphere of quiet, culture, and refinement, that encourages study and accomplishment. The material needs of every student can be purchased in Louisburg at most reasonable prices; therefore, it is an economic and otherwise desirable home for students.

*Louisburg Sincerely Welcomes Everyone
At All Times*

TOWN OF LOUISBURG

W. C. WEBB, Mayor

WESTERN AUTO ASSOCIATE STORE

Everything for the Auto



LOUISBURG, NORTH CAROLINA

FULLERS ESSO SERVICE

ESSO PRODUCTS : ATLAS
TIRES : BATTERIES
ACCESSORIES

(Opposite Post Office)

DIAL 357-1 LOUISBURG, N. C.

BEST WISHES

To The
GUYS AND GALS
At
LOUISBURG COLLEGE

LOUISBURG THEATRE

HOME
FURNITURE CO.

*Complete
Furnishings for the Home*



PHONE 459-1

FURNITURE
APPLIANCES



LOUISBURG, NORTH CAROLINA

*Greetings and Best Wishes
to Louisburg College*



DENDRON	CROZER
RODA	LYNCO
STONEGA	BEEHIVE COKE
GLENBROOK	HAMPTON

General Coal Company

Charlotte, North Carolina

O'NEAL DRUG CO.

"Your Drug Store"

THE BEST OF EVERYTHING FOR YOU

SERVICE WITH A SMILE

HOLLINGSWORTH CANDIES

PRESCRIPTIONS

LOUISBURG, NORTH CAROLINA

HONEYCUTT FRUIT AND PRODUCE CO.

Halifax Street at Seaboard Railway Team Tracks

WHOLESALE FRUIT AND PRODUCE

RALEIGH, NORTH CAROLINA

GRADUATE TO GREATER
SAVINGS

AT YOUR FRIENDLY
COLONIAL STORES

*Serving the South with
Finer Food*

FIRST-CITIZENS
BANK



LOUISBURG, N. C.

*Serving Coca-Cola
Serves Hospitality*



THE CAPITAL COCA-COLA BOTTLING CO.

CHESSON CANDY COMPANY

"Sweets that Repeat"

LOUISBURG, N. C.
PHONE 337-2

BEST IN CANDY, GUM, PEANUTS AND SANDWICHES

Allen-Rowe Sales Co.

Sales - Service

**CHEVROLET
GENERAL REPAIRS**

Telephone Dial 314-1
LOUISBURG, N. C.

G. W. MURPHY & SON

LOUISBURG, N. C.

Dealers in

**GROCERIES : MEATS
FEEDS : SEEDS
SELF SERVICE**

"Everything Good To Eat"
Your Patronage is Appreciated

BEST WISHES

YOUR DOWNTOWN MEETING PLACE



**BODDIE
DRUG STORE**



LOUISBURG, NORTH CAROLINA

BELL BAKERIES, INC.

RALEIGH, NORTH CAROLINA

Bakers of

PETER WHEAT WHITE BREAD

and

BELL CAKE

A Twofold Opportunity

Life Insurance offers everyone the means through which they may immediately create a sizable estate at small cost.

The Life Insurance Company of Virginia offers to a limited number of capable young men the opportunity of large earnings through service to their friends and neighbors.

If you are interested in owning Life Insurance or in making a career of Life Insurance selling, we will be glad to advise you.

ROSSER O. JOHNSON, MANAGER

THE LIFE INSURANCE COMPANY OF VIRGINIA

505-11 Security National Bank Building

RALEIGH, NORTH CAROLINA

Established 1871

The Oldest Southern Life Insurance Company

Little River Ice Company

ICE AND COAL

Air Conditioned Ice Refrigerators

Water Coolers : Ice Cream

Freezers : Stokers : Stoves

LOUISBURG, N. C.

A STEP AHEAD IN STYLE
A MILE AHEAD IN VALUES

Fox's Department Store

and

Fashion Shoppe

LOUISBURG, NORTH CAROLINA

ROSE'S 5-10-25c STORE

QUALITY :- SERVICE

126 Stores to Serve You

R. W. SMITHWICK, *Local Manager*

PRUITT LUMBER CO.

Better Homes for Better Living

WE OFFER YOU A COMPLETE
BUILDING SERVICE

Phone 433-1 East Nash Street
LOUISBURG, NORTH CAROLINA

**WRENN-WOODLIEF
MOTORS**

Cars — **STUDEBAKER** — Trucks
Sales Service

Louisburg, North Carolina

The Home of Better Values

**LEGGETT'S
DEPARTMENT STORE**

LOUISBURG, NORTH CAROLINA

Phone 3531

*The South's Leading
Distributors of
Reliable Merchandise*

**THE HENDERSON
GROCERY**

Wholesale Distributors



MELROSE FLOUR
KASCO FEED
DEL MONTE FOODS

KOTEX KLEENEX
DELSEY TISSUE

**JOYNER'S
MEN'S SHOP**

QUALITY CLOTHING
SHOES
and
FURNISHINGS

PHONE NO. 573-1
LOUISBURG, NORTH CAROLINA

Best Wishes
from the
AIR PORT GRILL
JACKS PLACE

**QUALITY
DRY CLEANERS**
PHONE 5181
For Quick and Dependable Service
South Main Street
LOUISBURG, N. C.

WALLER and SMITH

●
Photographers
For
THE 1951 OAK

●
12 East Hargett Street
Phone 7703
RALEIGH

Space Contributed By
**GRIFFIN-THARRINGTON
MOTORS**

=====
**FRANKLINTONIAN
DEPARTMENT STORE**

=====
**WHITE'S ICE CREAM
COMPANY**
RALEIGH, NORTH CAROLINA

GENERAL LAUNDRY AND CLEANERS

HENDERSON and WAKE FOREST



Have you tried
a Krispy Kreme
lately?

Ideal for snacks, dessert, breakfast...
good in school lunches, too.

EAT
Krispy Kreme
DOUGHNUTS

**CORNER DRUG
COMPANY**

FRANKLINTON, N. C.

**LOUISBURG
DRY CLEANERS**

LOUISBURG, N. C.

Compliments

of a

FRIEND



BUILDERS DREAMS

THE OAK STAFF
and the
EDWARDS & BROUGHTON
COMPANY
Cooperated to produce this Annual.

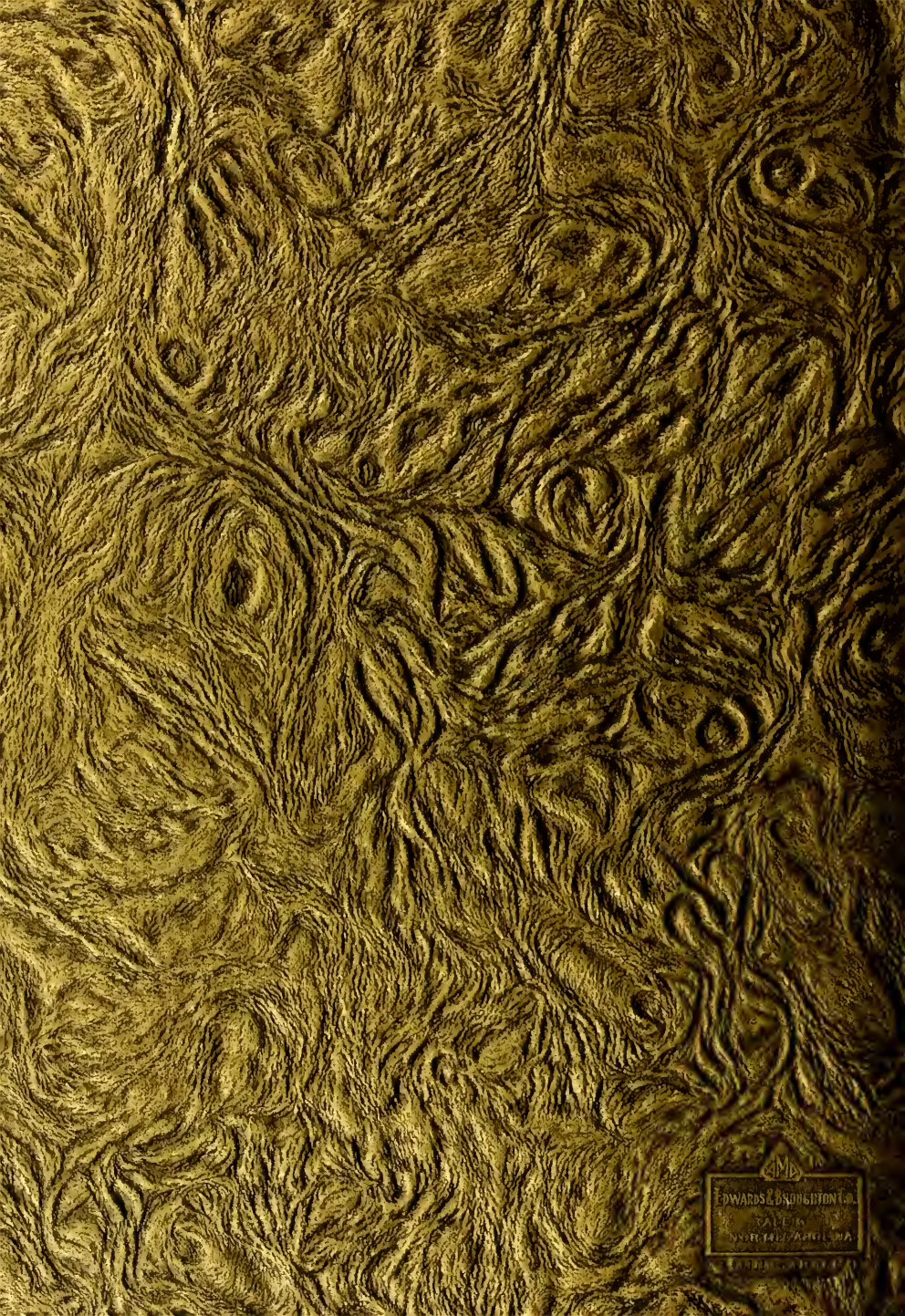
•
Letter Press and Lithographed
Annuals produced in our
plant in Raleigh.

•
WRITE FOR OUR
ANNUAL REPRESENTATIVE
TO CALL AT YOUR SCHOOL.

•
EDWARDS & BROUGHTON
COMPANY

Established in 1871

AUTOGRAPHS



EDWARDS & BRADSHAW CO.
PUBLISHERS
NEW YORK, N. Y.