

Historic, archived document

Do not assume content reflects current scientific knowledge, policies, or practices.

Boards
1.9
Ec7/4

U.S. DEPT. OF AGRICULTURE
NAT'L AG. LIBRARY
RECEIVED

TOBACCO STOCKS

JANUARY 1, 1973

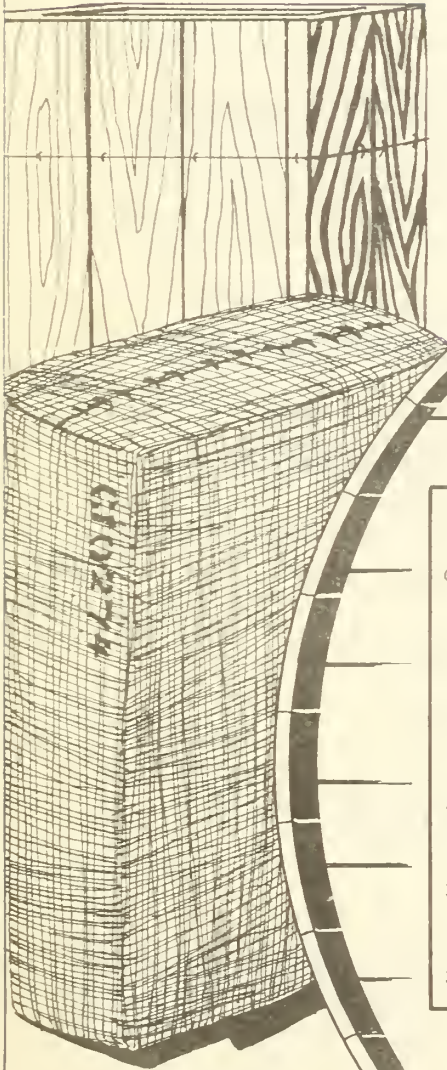
DEC 29 '73

PROCUREMENT SECTION
CURRENT SERIAL RECORDS

J. S. DEPT. OF AGRICULTURE
NATIONAL AG. LIBRARY
RECEIVED

APR 18 1973

PROCUREMENT SECTION
CURRENT SERIAL RECORDS



CONTENTS

Discussion	3- 5
Conversion factors for adjusting for losses in weight	6
Stocks of leaf tobacco, by types, converted to a FARM-SALES-WEIGHT equivalent	7
Production, stocks, supply, disappearance, and price of specified types (FARM-SALES-WEIGHT)	8-11
Summary of tobacco leaf represented in inventories of tobacco sheet	12
Stocks of leaf tobacco, by types, showing separately quantities owned by dealers and manufacturers	13
Stocks of leaf tobacco, summary by types	14

BRIEF CLASSIFICATION OF LEAF TOBACCO

(Covering classes and types)

CLASS 1, FLUE-CURED TYPES

- Type 11: Old Belt flue-cured; produced principally in the Piedmont sections of Virginia and North Carolina.
- Type 12: Eastern North Carolina flue-cured; produced principally in the coastal sections of North Carolina, north of the South River.
- Type 13: South Carolina flue-cured; produced principally in the coastal sections of South Carolina, the southeastern counties of North Carolina, south of the South River.
- Type 14: Georgia and Florida flue-cured; produced principally in southern Georgia and northern Florida.

CLASS 2, FIRE-CURED TYPES

- Type 21: Virginia fire-cured; produced in the Piedmont and mountain sections of Virginia.
- Type 22: Tennessee-Kentucky fire-cured, eastern district, Clarksville, Springfield, and Hopkinsville; produced principally in a section east of the Tennessee River, in southern Kentucky and northern Tennessee.
- Type 23: Kentucky-Tennessee fire-cured, western district, Mayfield, and Murray; produced principally in a section between the Tennessee, Ohio, and Mississippi rivers in western Kentucky and northwestern Tennessee.

CLASS 3, AIR-CURED TYPES

LIGHT AIR-CURED (CLASS 3a)

- Type 31: Burley; produced principally in Kentucky, Tennessee, Ohio, Indiana, West Virginia, Virginia, North Carolina, and Missouri.
- Type 32: Southern Maryland; produced principally in five counties of southern Maryland--Prince Georges, Anne Arundel, Calvert, Charles, and St. Marys.

DARK AIR-CURED (CLASS 3b)

- Type 35: One Sucker; produced in north-central Tennessee and south-central Kentucky.
- Type 36: Green River; produced in the northern part of Kentucky in the territory adjacent to Owensboro and Henderson.
- Type 37: Virginia sun-cured; produced principally in central Virginia, north of the James River.

CLASS 4, CIGAR-FILLER TYPES

- Type 41: Pennsylvania Seedleaf; produced principally in Lancaster County, Pa., and the adjoining counties.
- Type 42-44: Ohio filler; produced principally in the Miami Valley section of Ohio and extending into Indiana.
- Type 46: Puerto Rican sun-grown, including primed (Deshojado) and stalk-cut (Mata); produced on the Island of Puerto Rico

CLASS 5, CIGAR-BINDER TYPES

- Type 51: Connecticut Broadleaf; produced in the Connecticut Valley sections of Connecticut and Massachusetts.
- Type 52: Connecticut Havana Seed; produced in the Connecticut and Housatonic Valley sections of Connecticut and Massachusetts.
- Type 53: New York and Pennsylvania Havana Seed; produced in the Big Flats and Onondaga sections of New York, and extending into Pennsylvania.
- Type 54: Southern Wisconsin; produced in Wisconsin, south and east of the Wisconsin River.
- Type 55: Northern Wisconsin; produced in Wisconsin, north and west of the Wisconsin River, and in eastern Minnesota.

CLASS 6, CIGAR-WRAPPER TYPES

- Type 61: Connecticut Shade; produced in the Connecticut Valley sections of Connecticut and Massachusetts.
- Type 62: Georgia and Florida Shade; produced in southwestern Georgia and north-central Florida.

MISCELLANEOUS TYPES OF DOMESTIC TOBACCO

- Type 72: Louisiana Perique.
- Type 73: All domestic types of tobacco not otherwise classified.

FOREIGN TYPES

- Type 81: Cuba
- Type 82: Indonesia
- Type 83: Philippine Islands
- Type 84: Brazil
- Type 85: Colombia
- Type 86: Dominican Republic
- Type 87: Paraguay
- Type 88: Mexico
- Type 89: Other foreign-grown cigar leaf
- Type 91: Foreign-grown Oriental and Aromatic
- Type 92: Foreign-grown flue-cured
- Type 93: Foreign-grown burley

STOCKS OF LEAF TOBACCO OWNED BY DEALERS AND MANUFACTURERS 1/ 2/

Total stocks of leaf tobacco smaller than a year ago.

Leaf tobacco stocks in the United States and Puerto Rico totaled 4,700 million pounds as of January 1, 1973, based on the quarterly reports of dealers and manufacturers. This was a decline of 128 million pounds when compared with the previous January 1.

Domestic flue-cured and burley stocks were below the January 1, 1972 totals by 185 million and 14 million pounds respectively, while the combined inventory of foreign-grown flue-cured and burley tobaccos rose 29 million pounds to a record high of 48 million pounds. Foreign cigar leaf tobacco stocks showed a gain of 23 million pounds. Domestic cigar filler and dark tobacco stocks reached record lows after decreasing 21 million and 5 million pounds respectively.

Loan stocks as of January 1, 1973 were divided as follows:

flue-cured	494.5	million	pounds
burley	293.6	"	"
fire-cured	0.7	"	"
dark air-cured	13.1	"	"
cigar leaf	2.9	"	"

1/ Figures quoted for type totals in this summary are the farm-sales-weight equivalent of reported stocks. (See table in body of report for reported weight basis.) This report is issued quarterly.

2/ All Government loan stocks are reported by grower cooperatives, which are considered dealers for stocks-reporting purposes.

CIGARETTE LEAF STOCKS

Flue-cured and burley lower; Maryland higher; imported stocks larger.

Stocks of flue-cured tobacco totaled 2,327 million pounds on January 1, 1973--a decline of 185 million from last January 1. Final producers' sales of the 1972 crop are estimated at 1,021 million pounds, about 55 million below last season.

Burley inventories this January 1 totaled 1,551 million pounds--14 million below the stocks of a year ago. Producers' sales of the 1972 crop are expected to surpass 580 million pounds, a gain of at least 22 percent from the 1971 crop.

Maryland stocks on January 1, 1973, were 46.6 million pounds--0.6 million above a year ago.

Stocks of foreign-grown cigarette and smoking tobacco were 417.6 million pounds, an increase of 18 million from last January 1. The inventories of foreign-grown flue-cured and burley were at record levels.

DARK TOBACCO STOCKS

Decline in both fire and dark air-cured.

Fire-cured stocks, reported at 55.5 million pounds on January 1, 1973, were 2.3 million below those of a year ago. Virginia fire-cured holdings were 7.5 million pounds; Eastern District Kentucky and Tennessee, 40.3 million; and Western District, 7.7 million pounds. Sales of the 1972 crop of Virginia fire-cured in December were about 2.9 million pounds. Kentucky and Tennessee auction markets did not open until January, but considerable tobacco was purchased in the country prior to Christmas.

Holdings of dark air-cured tobacco totaled 51.4 million pounds this January 1. This was 2.8 million below January 1, 1972. Inventories by types: One Sucker, 31.1 million pounds; Green River, 17.2 million; and Virginia sun-cured, 3.1 million pounds. Producers' sales of dark air-cured leaf prior to January 1 were approximately 8.2 million pounds.

CIGAR LEAF STOCKS

Domestic leaf lower, imported higher.

Holdings of all domestic types of cigar leaf were reported at 139.5 million pounds on January 1, 1973--a drop of 25.8 million pounds from a year ago. Foreign-grown cigar leaf totaled 106.4 million pounds, a gain of 23.5 million.

Cigar filler stocks totaling 76.5 million pounds were down 21.2 million from last January 1. Pennsylvania Seedleaf stocks were 60.4 million; Ohio filler, 6.1 million; and Puerto Rican, 10.0 million pounds.

Stocks of cigar binder types were down 1.6 million at 43.1 million pounds. Individual type inventories: Connecticut Valley Broadleaf, 5.2 million; Connecticut Valley Havana Seed, 2.5 million; Southern Wisconsin, 17.9 million; and Northern Wisconsin, 17.5 million pounds.

Shade-grown cigar wrapper stocks this January 1 were 19.9 million pounds--down 3.0 million from last year. Connecticut Valley Shade stocks were 11.5 million pounds; and Georgia Florida Shade, 8.4 million.

Stocks of foreign-grown cigar leaf were divided as follows: Cuba, 0.4 million; Philippine Islands, 37.3 million, (up 5.7 million); Indonesia, 6.7 million; Brazil, 8.0 million; Columbia, 7.1 million; Dominican Republic, 17.1 (up 7.9 million); Paraguay, 6.9 million; Mexico, 6.5 million; and other countries, 16.5 million pounds.

STOCKS OF TOBACCO SHEET

Sheet stocks continue decline.

Stocks of leaf tobacco represented in inventories of "Tobacco Sheet" totaled 25.8 million pounds (reported weight) compared with 28.7 million on the previous January 1.

The inventory this January 1 contained 23.8 million pounds for use in cigarettes and smoking tobacco and 2.0 million pounds for cigar binder and wrapper.

TABLE 1.--Factors for adjusting stocks reported by dealers and manufacturers to a farm-sales-weight equivalent, by types of tobacco

AUCTION MARKET AREAS (Types 11-37) 1/

Type name	Type number	Factors to multiply by to convert -			
		Stemmed stocks to -		Unstemmed stocks to -	
		Unstemmed equivalent	Farm-sales weight equivalent	Farm-sales-weight equivalent	From packed weight 1/
Flue-cured	11-14	1.295	1.450		1.12
Virginia fire-cured	21	1.299	1.598		1.23
Tennessee and Kentucky fire-cured	22-23	1.324	2/ 1.471		1.04
Burley	31	1.345	1.506		1.12
Southern Maryland	32	1.375	1.400		1.02
One Sucker	35	1.413	1.554		1.10
Green River	36	1.389	1.570		1.13
Virginia sun-cured	37	1.326	1.538		1.16
Miscellaneous domestic	72-73	1.333	1.493		1.12

DOMESTIC-GROWN CIGAR LEAF (Types 41-62)

	Type number	Stemmed stocks to -	Farm-sales weight equivalent	Sweated weight	Marked weight	Farm-sales-weight	Average for Jan. 1, 1973 report
				3/	3/	3/	3/
Pennsylvania Seedleaf	41	1.444	1.718	1.19	1.05	1.00	1.02
Ohio	42-44	1.454	1.730	1.19	1.05	1.00	1.14
Puerto Rican	46	1.314	1.551	1.18	1.16	1.00	(1.16 - U. S. 1.18 - P. R.)
Connecticut Broadleaf	51	1.375	1.622	1.18	1.04	1.00	1.09
Connecticut Havana Seed	52	1.388	1.635	1.18	1.04	1.00	1.13
Southern Wisconsin	54	1.383	1.687	1.22	1.06	1.00	1.02
Northern Wisconsin	55	1.404	1.713	1.22	1.06	1.00	1.04
Connecticut Shade	61	1.245	1.419	1.14	1.10	1.00	1.08
Georgia and Florida Shade	62	1.235	1.408	1.14	1.10	1.00	1.12

IMPORTED LEAF (Types 81-93)

Cigar leaf	81-89	1.400	1.624			1.16	
Foreign-grown Oriental and Aromatic	91	1.333	1.466			1.10	
Foreign-grown flue-cured	92	1.295	1.450			1.17	
Foreign-grown burley	93	1.345	1.506			1.12	

1/ Types 11-37 are reported on the basis of packed weight.

2/ Farm-sales-weight equivalent based on unstemmed sweated weight factor.

3/ The instructions for reporting unstemmed cigar-leaf of the domestic types require that dealers and manufacturers indicate the weight basis on which the tobacco is reported, namely, farm-sales-weight, marked weight, or sweated weight. The stocks are converted to the farm-sales-weight equivalent on the basis of average factors reflecting the percentage reported each quarter in each of these three categories.

TABLE 2.--Stocks of leaf tobacco owned by dealers and manufacturers, by types, converted to a farm-sales-weight equivalent, January 1, 1973, compared with other quarters 1/

REPORTED WEIGHT

Type number	U. S. type number	January 1,			October 1,	July 1,	April 1,
		1973	1972	1971	1972	1972	1972
		1,000 lb.	1,000 lb.	1,000 lb.	1,000 lb.	1,000 lb.	1,000 lb.
Flue cured	11-14	2,326,847	2,511,875	2,503,866	2,340,116	1,910,176	2,158,050
Virginia fire-cured	21	7,463	10,408	9,952	8,266	10,257	11,676
Tennessee and Kentucky fire-cured (Eastern District)	22	40,344	40,682	44,552	47,108	53,816	61,222
Kentucky and Tennessee (Western District)	23	7,742	6,666	9,505	9,107	9,368	9,930
Total fire-cured	21-23	55,549	57,756	64,009	64,481	73,441	82,828
Burley	31	1,550,837	1,564,907	1,654,154	1,248,469	1,390,121	1,534,301
Southern Maryland	32	46,565	46,021	50,064	54,470	60,898	39,673
Total light air-cured	31-32	1,597,402	1,610,928	1,704,218	1,302,939	1,451,019	1,573,974
One Sucker	35	31,055	33,400	36,166	29,417	33,283	36,340
Green River	36	17,193	17,368	19,324	16,772	17,691	18,455
Virginia sun cured	37	3,105	3,412	3,593	2,999	3,294	3,649
Total dark air-cured	35-37	51,353	54,180	59,082	49,188	54,268	58,444
Pennsylvania Seedleaf	41	60,369	79,193	86,680	70,179	79,117	88,729
Ohio Filler (Miami Valley)	42-44	6,139	7,228	8,704	7,035	8,278	9,396
Puerto Rican:							
in United States	46	3,342	4,475	5,180	3,475	3,809	4,112
in Puerto Rico	46	6,618	6,830	13,494	9,196	11,059	7,432
Total cigar filler	41-46	76,468	97,726	114,058	89,885	102,263	109,669
Connecticut Valley Broadleaf	51	5,215	5,263	4,320	5,152	5,587	5,926
Connecticut Valley Havana Seed	52	2,504	2,716	2,958	2,286	2,329	2,678
Southern Wisconsin	54	17,944	17,713	16,787	20,256	22,495	24,845
Northern Wisconsin	55	17,464	18,986	19,563	18,959	21,480	23,841
Total cigar binder	51-55	43,127	44,678	43,628	46,653	51,891	57,290
Connecticut shade	61	11,545	14,160	15,512	12,175	13,168	13,992
Georgia and Florida shade	62	8,336	8,739	10,625	7,930	6,652	7,735
Total cigar wrapper	61-62	19,881	22,899	26,137	20,105	19,820	21,727
Perique	72	625	580	698	948	694	747
Other miscellaneous domestic 2/	73	5,081	5,325	5,538	5,303	5,465	4,617
Total miscellaneous domestic	72-73	5,706	5,905	6,236	6,251	6,159	5,364
Cuba	81	416	540	825	486	503	539
Indonesia	82	6,698	4,125	2,946	4,604	4,337	4,437
Philippine Islands	83	37,296	31,623	40,401	37,677	33,923	32,430
Brazil	84	8,022	7,279	7,969	7,200	8,019	6,306
Colombia	85	7,048	6,373	8,597	10,553	11,120	6,771
Dominican Republic	86	17,115	9,247	9,841	10,426	11,950	12,707
Paraguay	87	6,866	5,628	9,009	4,339	4,112	5,451
Mexico	88	6,463	5,701	6,675	6,713	6,007	6,139
Other foreign-grown cigar leaf	89	16,513	12,413	12,605	13,155	13,791	11,732
Total imported leaf	81-89	106,437	82,929	98,868	95,153	93,762	86,512
Foreign-grown Oriental and Aromatic	91	369,373	320,148	367,063	360,000	389,429	356,554
Foreign-grown flue-cured	92	31,131	12,070	13,264	19,495	24,402	11,610
Foreign-grown burley	93	17,086	6,895	5,272	10,504	9,370	8,573
Total imported cigarette and smoking tobacco leaf	91-93	417,590	339,113	385,599	389,999	423,201	376,737
Total all types	11-93	4,700,360	4,827,989	5,005,702	4,404,770	4,186,000	4,530,595

1/ Totals include stocks of leaf tobacco sheet. See separate reporting in table 4.

2/ Type 73 is defined as all domestic tobacco not otherwise classified.

TABLE 3.--Production, stocks, supply, disappearance on a farm-sales-weight basis, and price of specified types, 1966-72

TOTAL ALL TYPES 11-62										
Marketing year	Carryover stocks (October 1) 1/				Pro-duction	Total supply	Disappearance			Average price to growers
	Manu- facturers	Under loan	Other	Total			Total	Export	Other	
	Million pounds	Million pounds	Million pounds	Million pounds	Million pounds	Million pounds	Million pounds	Million pounds	Million pounds	Cents
1966	2,789.9	1,174.9	436.9	4,401.7	1,896.6	6,298.3	2,118.4	703.3	1,415.1	66.2
1967	2,681.8	1,043.5	454.5	4,179.8	1,965.4	6,145.2	2,036.2	647.6	1,388.6	67.1
1968	2,561.4	1,154.1	392.2	4,107.7	1,731.9	5,839.6	1,991.7	622.6	1,369.1	68.8
1969	2,342.6	1,172.9	332.5	3,848.0	1,809.3	5,657.2	1,960.2	640.2	1,320.0	71.7
1970	2,137.3	1,236.7	323.0	3,697.0	1,895.9	5,592.9	1,927.4	638.5	1,288.9	73.4
1971	2,108.2	1,250.0	307.2	3,665.4	1,712.7	5,378.1	1,895.0	571.0	1,324.0	78.4
1972 3/	2,211.6	961.9	309.6	3,483.1	1,755.4	4/ 5,238.5				
FLUE-CURED, TYPES 11-14 (July-June Marketing Year)										
1966	1,349.2	836.4	253.2	2,438.8	1,107.9	3,546.7	1,274.2	587.1	687.1	66.9
1967	1,306.1	685.4	281.0	2,272.5	2/ 1,250.0	3,522.5	1,221.0	533.3	687.7	64.9
1968	1,257.5	773.3	270.7	2,301.5	2/ 995.7	3,297.2	1,197.1	525.3	671.8	66.6
1969	1,080.8	800.5	218.8	2,100.1	1,052.8	3,152.9	1,180.5	534.6	645.9	72.4
1970	1,013.8	744.9	213.7	1,972.4	2/ 1,178.1	3,150.5	1,174.1	534.0	640.1	72.0
1971	1,010.0	761.9	204.5	1,976.4	2/ 1,076.3	3,052.8	1,142.6	480.0	662.6	77.2
1972 3/	1,086.6	617.8	205.8	1,910.2	1,012.1	4/ 2,922.3				
VIRGINIA FIRE-CURED, TYPE 21 (October-September Marketing Year)										
1966	8.4	3.5	5.0	16.9	7.5	24.4	9.6	7.4	2.2	41.2
1967	7.9	2.7	4.2	14.8	7.0	21.8	10.1	6.7	3.4	40.9
1968	6.5	2.8	2.4	11.7	5.9	17.6	7.8	4.7	3.1	46.9
1969	5.0	1.9	3.0	9.9	6.7	16.6	6.8	5.1	1.7	53.1
1970	4.8	1.4	3.6	9.8	6.2	16.0	7.0	4.6	2.4	52.0
1971	4.9	1.0	3.1	9.0	5.9	14.9	6.6	3.5	3.1	54.8
1972 3/	5.3	.4	2.6	8.3	5.5	4/ 13.8				
TOTAL, TYPES 22-23 (October-September Marketing Year)										
1966	48.0	25.9	21.9	95.8	40.2	136.0	44.7	23.7	21.0	42.2
1967	42.0	27.3	22.0	91.3	29.4	120.7	41.9	27.1	14.8	46.2
1968	40.7	21.4	16.7	78.8	32.6	111.4	38.7	19.6	19.1	51.1
1969	42.7	11.7	18.3	72.7	34.1	106.8	42.9	24.5	18.4	48.1
1970	35.3	9.7	18.9	63.9	30.9	94.8	41.5	28.3	13.2	54.4
1971	34.6	4.7	14.0	53.3	37.6	90.9	34.7	18.7	16.0	60.8
1972 3/	37.7	1.2	17.3	56.2	39.1	4/ 95.3				
TENNESSEE AND KENTUCKY FIRE-CURED, TYPE 22 (October-September Marketing Year)										
1966	40.6	17.7	16.0	74.3	29.8	104.1	32.7			42.9
1967	35.1	19.8	16.5	71.4	23.0	94.4	31.2			46.9
1968	35.0	15.4	12.8	63.2	25.3	88.5	5/ 29.6			51.5
1969	37.3	7.6	14.0	58.9	25.8	84.7	32.0			48.4
1970	30.9	6.9	15.0	52.8	24.4	77.2	31.3			54.8
1971	30.6	4.0	11.2	45.8	29.9	75.7	28.6			61.0
1972 3/	32.2	1.1	13.8	47.1	31.5	4/ 78.6				
KENTUCKY AND TENNESSEE FIRE-CURED, TYPE 23 (October-September Marketing Year)										
1966	7.4	8.2	5.9	21.5	10.4	31.9	12.0			40.2
1967	6.9	7.5	5.5	19.9	6.4	26.3	10.7			43.7
1968	5.7	6.0	3.9	15.6	7.3	22.9	9.1			50.0
1969	5.4	4.1	4.3	13.8	8.2	22.0	10.9			47.3
1970	4.4	2.8	3.9	11.1	6.5	17.6	10.2			53.1
1971	4.0	0.7	2.8	7.5	7.7	15.2	6.1			60.1
1972 3/	5.5	.1	3.5	9.1	7.6	4/ 16.7				

See footnotes at end of table.

Continued--

TABLE 3. Production, stocks, supply, disappearance on a farm sales weight basis, and price of specified types, 1966-72

BURLEY, TYPE 31 (October-September Marketing Year)										
Marketing year	Carryover stocks (October 1) 1/				Pro- duction	Total supply	Disappearance			Average price to growers
	Manu- facturers	Under loan	Other	Total			Total	Export	Other	
	Million pounds	Million pounds	Million pounds	Million pounds	Million pounds	Million pounds	Million pounds	Million pounds	Million pounds	Cents
1966	1,065.4	261.9	68.0	1,395.3	586.7	1,982.0	600.5	56.4	544.1	66.9
1967	1,038.1	276.7	66.7	1,381.5	540.6	1,922.2	598.1	53.4	544.7	71.8
1968	966.5	321.7	35.9	1,324.1	563.4	1,887.5	571.0	54.9	516.1	73.7
1969	941.6	340.8	34.1	1,316.5	591.4	1,907.9	565.2	58.1	507.1	69.6
1970	858.0	454.8	29.9	1,342.7	560.5	1,903.2	557.4	54.4	503.0	72.2
1971	854.4	463.4	28.0	1,345.8	472.6	1,818.4	569.9	54.7	515.2	80.9
1972 3/	887.7	327.7	33.1	1,248.5	4/ 588.4	1,836.9				

MARYLAND, TYPE 32 (October-September Marketing Year)										
Marketing year	Manu- facturers	Under loan	Other	Total	Pro- duction	Total supply	Total	Export	Other	Average price to growers
	Million pounds	Million pounds	Million pounds	Million pounds	Million pounds	Million pounds	Million pounds	Million pounds	Million pounds	Cents
1966	47.4	22.5	29.8	99.7	36.1	135.8	40.2	16.5	23.7	48.6
1967	48.9	18.5	28.2	95.6	32.4	128.0	36.0	15.7	20.3	62.4
1968	57.8	9.3	24.9	92.0	31.9	123.9	48.6	10.3	38.3	69.8
1969	56.8	--	18.4	75.2	28.1	103.3	41.3	12.2	29.1	75.1
1970	42.6	--	19.4	62.0	29.4	91.4	39.5	11.9	27.6	78.6
1971	34.7	--	17.1	51.8	28.1	79.9	25.5	8.0	17.5	81.9
1972 3/	33.7	--	20.8	54.5	4/ 26.0	80.5				

TOTAL, TYPES 35-36 (October-September Marketing Year)										
Marketing year	Manu- facturers	Under loan	Other	Total	Pro- duction	Total supply	Total	Export	Other	Average price to growers
	Million pounds	Million pounds	Million pounds	Million pounds	Million pounds	Million pounds	Million pounds	Million pounds	Million pounds	Cents
1966	36.3	19.6	4.7	60.6	21.3	81.9	21.4	4.4	17.0	37.3
1967	35.9	21.3	3.3	60.5	15.5	76.0	17.8	3.0	14.8	40.8
1968	36.6	17.1	4.5	58.2	18.0	76.2	17.1	2.0	15.1	47.4
1969	41.1	15.0	3.0	59.1	18.1	77.2	23.5	2.3	21.2	40.3
1970	32.7	18.2	2.8	53.7	15.4	69.1	19.2	2.5	16.7	46.0
1971	32.6	14.3	2.9	49.8	15.7	65.5	19.3	1.9	17.4	47.1
1972 3/	30.9	12.7	2.6	46.2	4/ 14.7	60.9				

ONE SUCKER, TYPE 35 (October-September Marketing Year)										
Marketing year	Manu- facturers	Under loan	Other	Total	Pro- duction	Total supply	Total	Export	Other	Average price to growers
	Million pounds	Million pounds	Million pounds	Million pounds	Million pounds	Million pounds	Million pounds	Million pounds	Million pounds	Cents
1966	22.4	11.7	3.8	37.9	14.2	52.2	14.8	3.3	11.5	37.8
1967	22.3	12.0	3.1	37.4	10.4	47.8	11.4	2.4	9.0	42.3
1968	23.9	8.7	3.8	36.4	12.6	49.0	10.4	1.4	9.0	49.5
1969	28.3	7.8	2.6	38.7	13.3	52.0	17.6	1.9	15.7	40.7
1970	21.9	10.1	2.3	34.3	10.9	45.2	13.2	2.0	11.2	47.5
1971	22.2	7.8	2.0	32.0	11.2	43.2	13.8	1.6	12.2	47.3
1972 3/	20.7	6.3	2.4	29.4	4/ 10.1	39.5				

GREEN RIVER, TYPE 36 (October-September Marketing Year)										
Marketing year	Manu- facturers	Under loan	Other	Total	Pro- duction	Total supply	Total	Export	Other	Average price to growers
	Million pounds	Million pounds	Million pounds	Million pounds	Million pounds	Million pounds	Million pounds	Million pounds	Million pounds	Cents
1966	13.9	7.9	.9	22.7	7.0	29.7	6.6	1.0	5.5	36.3
1967	13.6	9.3	.2	23.1	5.0	28.2	6.4	.6	5.8	37.9
1968	12.7	8.4	.7	21.7	5.4	27.1	6.7	.6	6.1	42.7
1969	12.8	7.2	.4	20.4	4.8	25.2	5.9	.4	5.5	39.4
1970	10.8	8.1	.5	19.4	4.4	23.8	6.0	.5	5.5	42.5
1971	10.4	6.5	.9	17.8	4.5	22.3	5.5	.3	5.2	46.4
1972 3/	10.2	6.4	.2	16.8	4/ 4.6	21.4				

VIRGINIA SUN-CURED, TYPE 37 (October-September Marketing Year)										
Marketing year	Manu- facturers	Under loan	Other	Total	Pro- duction	Total supply	Total	Export	Other	Average price to growers
	Million pounds	Million pounds	Million pounds	Million pounds	Million pounds	Million pounds	Million pounds	Million pounds	Million pounds	Cents
1966	3.9	--	.4	4.3	1.5	5.8	1.6	.4	1.3	42.3
1967	3.8	--	.4	4.2	1.3	5.5	1.5	.4	1.2	45.2
1968	3.7	--	.2	3.9	1.2	5.1	1.3	.2	1.1	53.2
1969	3.5	--	.3	3.8	1.3	5.1	1.8	.3	1.5	52.8
1970	3.2	--	.1	3.3	1.1	4.4	1.3	.3	1.0	53.8
1971	3.1	--	.1	3.2	1.1	4.2	1.2	.2	1.0	54.1
1972 3/	3.0	--	-	3.0	4/ 0.9	3.9				

See footnotes at end of table.

Continued--

TABLE 3.--Production, stocks, supply, disappearance on a farm-sales-weight basis, and price of specified types, 1966-72

PENNSYLVANIA SEEDLEAF, TYPE 41 (October-September Marketing Year)										
Marketing year	Carryover stocks (October 1) 2/				Pro-duction	Total supply	Disappearance			Average price to growers
	Manu- facturers	Under loan	Other	Total			Total	Export	Other	
	Million pounds	Million pounds	Million pounds	Million pounds	Million pounds	Million pounds	Million pounds	Million pounds	Million pounds	Cents
1966	105.5	--	22.2	127.7	36.2	164.9	51.7	1.5	50.2	25.0
1967	86.5	--	25.5	112.3	38.3	150.6	41.9	.6	41.3	28.0
1968	87.3	--	21.4	108.7	37.3	146.0	40.9	.9	40.0	30.0
1969	79.3	--	25.8	105.1	37.5	142.6	45.3	.6	44.7	30.0
1970	70.5	--	26.8	97.3	30.6	127.9	40.9	.2	40.7	31.0
1971	59.4	--	27.6	87.0	27.2	114.2	44.0	.4	43.6	36.0
1972 3/	53.8	--	16.4	70.2	4/ 22.4	92.6				
MIAMI VALLEY (OHIO) FILLER, TYPES 42-44 (October-September Marketing Year)										
1966	14.6	--	1.5	16.2	6.0	22.3	6.8	--	6.8	28.0
1967	14.5	.2	.8	15.5	3.6	19.1	6.2	--	6.2	29.0
1968	11.2	--	1.7	12.9	3.4	16.3	5.4	--	5.4	31.0
1969	9.6	--	1.3	10.9	2.8	13.7	4.7	--	4.7	32.5
1970	8.2	.1	.7	9.0	2.9	11.9	4.1	--	4.1	38.0
1971	7.4	--	.4	7.8	3.8	11.6	4.1	--	4.1	41.0
1972 3/	6.7	--	.3	7.0	4/ 4.0	11.0				
PUERTO RICAN FILLER, TYPE 46 (October-September Marketing Year)										
1966	34.5	--	17.2	51.8	12.0	63.8	23.4	.1	23.3	31.3
1967	30.2	1.5	8.8	40.5	10.8	51.3	16.9	--	16.9	33.1
1968	28.5	1.5	4.4	34.4	7.6	42.0	16.2	--	16.2	33.3
1969	21.1	1.5	3.2	25.8	6.1	31.9	12.6	--	12.6	33.6
1970	12.9	5.5	.9	19.3	4.5	23.8	8.8	--	8.8	36.1
1971	9.7	2.8	2.5	15.0	6.7	21.7	9.0	--	9.0	36.7
1972 3/	9.0	--	3.7	12.7	4/ 6.7	19.4				
CONNECTICUT BINDER, TYPES 51-52 (October-September Marketing Year)										
1966	12.7	3.7	2.9	19.3	3.8	23.2	6.8	1.6	5.1	51.2
1967	9.2	3.3	3.9	16.4	2.7	19.1	7.9	2.2	5.7	54.5
1968	7.3	1.5	2.4	11.2	2.8	14.0	5.1	.4	4.7	59.5
1969	4.8	1.4	2.7	8.9	2.3	11.2	4.2	.3	3.9	58.2
1970	3.0	2.1	1.9	7.0	2.9	9.9	2.8	.3	2.5	65.5
1971	2.9	1.9	2.4	7.2	2.8	10.0	2.5	.1	2.4	65.7
1972 3/	3.3	2.0	2.1	7.4	4/ 2.5	9.9				
CONNECTICUT BROADLEAF, TYPE 51 (October-September Marketing Year)										
1966	10.4	1.0	2.5	13.9	2.7	16.6	4.8	1.6	3.1	52.0
1967	7.7	1.1	3.0	11.8	2.0	13.8	5.3	2.2	3.2	55.0
1968	6.0	.5	2.0	8.5	2.1	10.6	4.3	.4	3.9	60.0
1969	3.7	.4	2.1	6.2	1.7	7.9	3.6	.3	3.3	59.0
1970	1.9	.9	1.5	4.3	2.2	6.5	2.1	.3	1.8	67.0
1971	1.8	1.1	1.5	4.4	2.2	6.6	1.4	.1	1.3	67.0
1972 3/	2.3	1.2	1.6	5.1	4/ 2.0	7.1				
CONNECTICUT HAVANA SEED, TYPE 52 (October-September Marketing Year)										
1966	2.3	2.7	.4	5.4	1.1	6.6	2.0	--	2.0	49.5
1967	1.5	2.2	.8	4.5	.7	5.3	2.5	--	2.5	53.0
1968	1.4	1.0	.4	2.8	.7	3.5	.8	--	.8	58.0
1969	1.1	1.0	.6	2.7	.6	3.3	.6	--	.6	56.0
1970	1.1	1.2	.4	2.7	.7	3.4	.7	--	.7	61.0
1971	1.1	.8	.9	2.8	.6	3.4	1.1	--	1.1	61.0
1972 3/	1.0	.8	.5	2.3	4/ .5	2.8				

See footnotes at end of table.

Continued--

TABLE 3.--Production, stocks, supply, disappearance on a farm-sales-weight basis, and price of specified types, 1966-72

WISCONSIN BINDER, TYPES 54-55
(October-September Marketing Year)

Marketing year	Carryover stocks (October 1) ^{2/}				Pro-duction	Total supply	Disappearance			Average price to growers
	Manu- facturers	Under loan	Other	Total			Total	Export	Other	
	Million pounds	Million pounds	Million pounds	Million pounds	Million pounds	Million pounds	Million pounds	Million pounds	Million pounds	Cents
1966	44.1	3.6	2.	50.6	16.3	66.9	16.9	.3	16.6	33.3
1967	39.2	6.6	4.2	50.0	16.1	66.1	17.4	.4	17.0	34.2
1968	40.0	5.4	3.4	48.8	14.0	62.8	22.5	.4	22.1	37.3
1969	38.6	.1	1.6	40.3	13.2	53.5	18.2	.3	17.9	41.8
1970	33.3	--	1.9	35.2	18.4	53.6	16.5	.1	16.4	51.1
1971	35.2	--	2.0	37.2	22.5	59.7	20.4	^{6/}	20.4	54.9
1972 ^{3/}	37.0	^{6/}	2.2	39.2	^{4/} 23.2	62.4				

SOUTHERN WISCONSIN, TYPE 54
(October-September Marketing Year)

1966	21.1	.5	.8	22.4	7.4	29.8	9.1	--	9.1	34.3
1967	19.6	.7	.4	20.7	7.2	27.9	8.1	--	8.1	34.3
1968	18.8	.3	.8	19.9	7.4	27.3	7.7	--	7.7	36.8
1969	19.1	^{6/}	.5	19.6	6.4	26.0	9.3	--	9.3	40.2
1970	16.5	--	.2	16.7	9.4	26.1	7.3	--	7.3	50.3
1971	18.2	--	.6	18.8	12.0	30.8	10.5	--	10.5	55.6
1972 ^{3/}	19.2	^{6/}	1.0	20.2	^{4/} 11.3	31.5				

NORTHERN WISCONSIN, TYPE 55
(October-September Marketing year)

1966	23.0	3.1	2.0	28.2	8.8	37.0	7.7	.3	7.4	32.4
1967	19.6	5.9	3.8	29.3	8.9	38.2	9.3	.4	8.9	34.1
1968	21.2	5.1	2.6	28.9	6.7	35.6	14.9	.4	14.5	37.9
1969	19.5	^{6/}	1.1	20.7	6.7	27.4	8.9	.3	8.6	43.4
1970	16.8	--	1.8	18.6	9.0	27.6	9.2	.1	9.1	52.0
1971	17.0	--	1.4	18.4	10.5	28.9	9.9	--	9.9	54.0
1972 ^{3/}	17.8	--	1.2	19.0	^{4/} 11.9	30.9				

TOTAL CIGAR WRAPPER, TYPES 61-62
(July-June Marketing Year)

1966	20.1	--	4.4	24.5	21.0	45.5	20.8	4.2	16.6	257.0
1967	19.5	--	5.2	24.7	17.6	42.3	20.8	4.9	15.9	308.0
1968	17.8	--	3.7	21.5	18.1	39.6	19.9	3.8	16.1	275.7
1969	17.7	--	2.0	19.7	15.9	35.6	14.1	1.9	12.2	336.2
1970	19.0	--	2.4	21.4	14.9	36.3	14.4	1.9	12.5	350.9
1971	19.3	--	2.7	22.0	12.4	34.4	14.6	3.4	11.2	348.0
1972 ^{3/}	17.1	--	2.7	19.8	9.8	29.6				

CONNECTICUT SHADE, TYPE 61
(July-June Marketing Year)

1966	13.9	--	2.4	16.3	13.7	30.0	14.0	3.5	10.5	295.0
1967	13.3	--	2.7	16.0	9.6	25.6	12.9	3.3	9.6	360.0
1968	11.5	--	1.2	12.7	10.2	22.9	10.8	1.7	9.1	280.0
1969	11.2	--	.9	12.1	8.1	20.2	8.0	1.0	7.0	400.0
1970	11.4	--	.8	12.2	9.3	21.5	7.6	1.0	6.6	400.0
1971	12.5	--	1.4	13.9	7.7	21.6	8.4	2.6	5.8	400.0
1972 ^{3/}	11.4	--	1.7	13.1	^{4/} 5.2	18.3				

GEORGIA AND FLORIDA SHADE, TYPE 62
(July-June Marketing Year)

1966	6.2	--	2.0	8.2	7.3	15.5	6.8	0.7	6.1	185.0
1967	6.2	--	2.5	8.7	8.0	16.7	7.9	1.6	6.3	245.0
1968	6.3	--	2.5	8.8	7.9	16.7	9.1	2.1	7.0	270.0
1969	6.5	--	1.0	7.5	7.8	15.3	6.1	0.9	5.2	280.0
1970	7.5	--	1.7	9.2	5.6	14.8	6.7	0.9	5.8	270.0
1971	6.8	--	1.3	8.1	4.7	12.8	6.2	0.8	5.4	262.0
1972 ^{3/}	5.7	--	1.0	6.7	^{4/} 4.6	11.3				

^{1/} Tabulated by broad groupings of ownership. "Other" represents stocks of dealers and those held in the United States by foreign manufacturers. Stocks shown are as of July 1 for flue-cured and cigar wrapper and October 1 for all other types. ^{2/} Sales substituted for production. ^{3/} Subject to revision. ^{4/} January 1 estimate, U. S. Crop Reporting Board, SRS. ^{5/} Includes 4.7 million pounds destroyed by fire. ^{6/} Less than 50,000 pounds.

Detail may not add to total because of rounding.

TABLE 4.--Summary of tobacco leaf represented in inventories of tobacco sheet, for cigar binder and wrapper, and for cigarettes (including smoking tobacco), separately

REPORTED WEIGHT

		Cigar Binder and Wrapper					
U.S. type number		January 1,			October 1,	July 1,	April 1,
		1973	1972	1971	1972	1972	1972
		1,000 lb.	1,000 lb.	1,000 lb.	1,000 lb.	1,000 lb.	1,000 lb.
11-14	Stemmed	7	2	7	6	0	0
32	Stemmed	43	40	74	52	48	46
	Unstemmed	649	528	657	574	788	512
41	Stemmed	447	444	509	401	577	482
	Total	1,096	972	1,166	975	1,365	994
42-44	Stemmed	34	32	50	40	37	35
46	Stemmed	10	9	16	9	9	9
51	Unstemmed	55	54	31	46	24	34
52	Unstemmed	83	68	63	72	67	73
54	Stemmed	268	211	50	153	393	223
	Unstemmed	16	50	183	17	21	20
55	Stemmed	52	86	38	26	69	66
	Total	68	136	221	43	90	86
	Unstemmed	8	15	19	17	15	17
61	Stemmed	32	10	32	19	10	20
	Total	40	25	51	36	25	37
62	Stemmed	1	15	12	1	10	10
81	Stemmed	5	11	5	5	3	4
	Unstemmed	13	12	16	9	8	7
82	Stemmed	25	3	14	15	7	7
	Total	38	15	30	24	15	14
	Unstemmed	0	11	9	0	7	8
83	Stemmed	97	80	108	87	93	91
	Total	97	91	117	87	100	99
84	Stemmed	25	8	24	11	12	12
85	Stemmed	15	6	19	8	9	9
	Unstemmed	25	31	51	14	14	11
86	Stemmed	24	14	17	13	14	14
	Total	49	45	68	27	28	25
87	Stemmed	35	19	0	34	26	25
88	Stemmed	0	1	0	2	2	2
89	Stemmed	37	19	31	20	20	15
	Unstemmed	854	769	1,029	749	944	682
Total	Stemmed	1,157	1,010	1,006	902	1,339	1,070
	Total	2,011	1,779	2,035	1,651	2,283	1,752
Cigarettes (including smoking tobacco)							
11-14	Unstemmed	1,431	2,203	2,053	1,514	1,628	1,847
	Stemmed	10,004	8,710	8,287	9,755	9,909	9,653
	Total	11,435	10,913	10,340	11,269	11,537	11,500
31	Unstemmed	626	1,137	2,264	759	963	1,114
	Stemmed	5,029	5,136	4,953	4,624	6,410	5,375
	Total	5,655	6,273	7,217	5,383	7,373	6,489
32	Unstemmed	0	0	0	0	0	0
	Stemmed	293	116	279	200	114	110
	Total	293	116	279	200	114	110
41	Unstemmed	1,165	2,847	4,746	1,505	1,919	2,364
	Stemmed	330	840	886	449	573	668
	Total	1,495	3,687	5,632	1,954	2,492	3,032
61	Unstemmed	29	30	152	30	38	29
	Stemmed	49	162	334	57	74	107
	Total	78	192	486	87	112	136
91	Unstemmed	3,535	4,725	3,969	3,931	4,394	4,660
	Stemmed	1,325	967	1,235	1,254	1,245	1,134
	Total	4,860	5,692	5,204	5,185	5,639	5,794
92	Stemmed	0	0	0	315	374	563
	Unstemmed	6,786	10,942	13,184	7,739	8,942	10,014
Total	Stemmed	17,030	15,931	15,974	16,654	18,699	17,610
	Total	23,816	26,873	29,158	24,393	27,641	27,624
Grand Total							
Total	Unstemmed	7,640	11,711	14,213	8,488	9,886	10,696
all types	Stemmed	18,187	16,941	16,980	17,556	20,038	18,680
	Total	25,827	28,652	31,193	26,044	29,924	29,376

TABLE 5.- Stocks of leaf tobacco, by types, showing separately quantities owned by dealers and manufacturers, January 1, 1973, compared with January 1, 1972 1/ 2/

REPORTED WEIGHT

U.S. type number	Reported as owned by manufacturers 3/			Reported as owned by dealers (including loan stocks) 2/				
	January 1, 1973			January 1, 1972	January 1, 1973			January 1, 1972
	Unstemmed	Stemmed	Total		Unstemmed	Stemmed	Total	
	1,000 lb.	1,000 lb.	1,000 lb.	1,000 lb.	1,000 lb.	1,000 lb.	1,000 lb.	1,000 lb.
11-14	48,680	965,148	1,013,828	954,028 1/	410,502	284,896	695,398	925,319
21	3,812	19	3,831	4,299	2,116	88	2,204	4,127
22	28,313	371	28,684	26,295	9,951	2	9,953	12,621
23	4,345	445	4,790	3,493	2,463	5	2,468	2,906
21-23	36,470	835	37,305	34,087	14,530	95	14,625	19,654
31	146,415	692,926	839,341	757,359	267,858	28,754	296,612	405,366
32	71	21,179	21,250	22,358	8,269	6,006	14,275	14,953
31-32	146,486	714,105	860,591	779,717	276,127	34,760	310,887	420,319
35	13,124	4,423	17,547	18,794	8,854	4	8,858	9,608
36	6,972	1,129	8,101	8,578	6,577	70	6,647	6,205
37	924	1,320	2,244	2,524	0	1	1	83
35-37	21,020	6,872	27,892	29,896	15,431	75	15,506	15,896
41	21,268	14,679	35,947	48,603	10,172	1,794	11,966	19,867
42-44	4,686	243	4,929	5,733	273	38	311	381
46 4/	4,839	1,510	6,349	6,398	1,393	193	1,586	2,614
41-46	30,793	16,432	47,225	60,734	11,838	2,025	13,863	22,862
51	1,008	648	1,656	2,122	2,413	269	2,682	2,563
52	879	22	901	960	1,299	5	1,304	1,453
54	12,043	2,729	14,772	16,437	844	116	960	409
55	7,050	4,992	12,042	14,018	815	428	1,243	3,290
51-55	20,980	8,391	29,371	33,537	5,371	818	6,189	7,715
61	7,290	1,268	8,558	10,832	1,725	7	1,732	1,999
62	5,543	319	5,862	5,935	1,151	277	1,428	1,735
61-62	12,833	1,587	14,420	16,767	2,876	284	3,160	3,734
72	4	263	267	225	78	94	172	188
73 5	0	3,353	3,353	3,545	13	41	54	22
72-73	4	3,616	3,620	3,770	91	135	226	210
81	41	101	142	252	50	91	141	124
82	1,240	1,188	2,428	1,645	2,695	125	2,820	1,555
83	7,918	6,636	14,554	12,597	10,416	3,234	13,650	10,144
84	1,441	1,433	2,874	3,829	2,881	419	3,300	1,638
85	1,169	2,100	3,269	3,871	1,887	57	1,944	1,009
86	8,137	2,838	10,975	6,122	1,647	713	2,360	725
87	302	900	1,202	885	4,337	15	4,352	3,667
88	2,112	1,408	3,520	4,286	1,461	19	1,480	122
89	4,939	1,517	6,456	6,547	6,243	663	6,906	3,079
81-89	27,299	18,121	45,420	40,034	31,617	5,336	36,953	22,063
91	327,772	5,597	333,369	288,412	429	100	529	423
92	4,213	5,753	9,966	3,099	10,635	4,248	14,883	6,653
93	1,762	4,339	6,101	1,814	5,301	1,754	7,055	3,299
91-93	333,747	15,689	349,436	293,325	16,365	6,102	22,467	10,375
11-93	678,312	1,750,796	2,429,108	2,245,895	784,748	334,526	1,119,274	1,448,147

1/ Total includes stocks of leaf reported in tobacco sheet. See separate reporting in table 4.

2/ These statistics represent the quantity of leaf tobacco reported as owned by all leaf tobacco dealers, manufacturers, quasi-manufacturers, growers' cooperative associations, warehousemen, brokers, holders, and owners subject to provisions of the Tobacco Stocks and Standards Act approved January 14, 1929, and the amendments thereto passed in the 72nd and 74th Congress. The quantities owned by dealers and manufacturers have been tabulated separately on a type total basis.

3/ This table should be considered as representing only the approximate quantities owned respectively by dealers and manufacturers. The quantities shown as owned by manufacturers represent domestic manufacturers only. All Government loan stocks are dealers' holdings.

4/ Includes stocks on the Island of Puerto Rico.

5/ For explanation of stocks included in this classification see footnote 2 on page 7.

TABLE 6.--Stocks of leaf tobacco owned by dealers and manufacturers, summary by types, January 1, 1973, compared with other quarters 1/ 2/

FARM-SALES WEIGHT

Type number	U.S. type number	January 1, 1973 3/			January 1, 1972	October 1, 1972	July 1, 1972
		Unstemmed	Stemmed	Total			
		1,000 lb.	1,000 lb.	1,000 lb.	1,000 lb.	1,000 lb.	1,000 lb.
Flue-cured	11-14	459,182	1,250,044	1,709,226	1,879,374	1,735,236	1,424,524
Virginia fire-cured	21	5,928	107	6,035	8,426	6,710	8,309
Tennessee and Kentucky fire-cured (Eastern District)	22	38,264	373	38,637	38,916	45,120	51,570
Kentucky and Tennessee fire-cured (Western District)	23	6,808	450	7,258	6,399	8,566	8,969
Total fire-cured	21-23	51,000	930	51,930	53,741	60,396	68,848
Burley	31	414,273	721,680	1,135,953	1,162,725	709,408	1,005,972
Southern Maryland	32	8,340	27,185	35,525	37,311	41,348	50,521
Total light air cured	31-32	422,613	748,865	1,171,478	1,200,036	751,256	1,056,493
One Sucker	35	21,978	4,427	26,405	28,402	24,922	27,971
Green River	36	13,549	1,199	14,748	14,783	14,290	15,063
Virginia sun-cured	37	924	1,321	2,245	2,607	2,182	2,517
Total dark air cured	35-37	36,451	6,947	43,398	45,792	41,394	45,551
Pennsylvania Seedleaf	41	31,440	16,473	47,913	68,470	56,576	64,720
Ohio Filler (Miami Valley)	42-44	4,959	281	5,240	6,114	6,025	7,089
Puerto Rico:							
in United States	46	1,680	899	2,579	3,572	2,709	2,978
in Puerto Rico	47	4,552	804	5,356	5,440	7,668*	9,966
Total cigar filler	41-46	42,631	18,457	61,088	83,596	72,978*	84,753
Connecticut Valley Broadleaf	51	3,421	917	4,338	4,685	4,301	4,750
Connecticut Valley Havana Seed	52	2,178	27	2,205	2,413	1,977	2,096
Southern Wisconsin	54	12,887	2,845	15,732	16,846	17,955	19,924
Northern Wisconsin	55	7,865	5,420	13,285	17,308	14,504	16,887
Total cigar binder	51-55	26,351	9,209	35,560	41,252	38,737	43,657
Connecticut shade	61	9,015	1,275	10,290	12,831	10,954	11,890
Georgia and Florida shade	62	6,694	596	7,290	7,670	7,029	5,898
Total cigar wrapper	61-62	15,709	1,871	17,580	20,501	17,983	17,788
Perique	72	82	357	439	413	668	480
Other miscellaneous domestic	73 4/	13	3,394	3,407	3,567	3,552	3,661
Total miscellaneous domestic	72-73	95	3,751	3,846	3,980	4,220	4,141
Cuba	81	91	192	283	376	338	354
Indonesia	82	3,935	1,313	5,248	3,200	3,576	3,428
Philippine Islands	83	18,334	9,870	28,204	22,741	27,735	24,385
Brazil	84	4,322	1,852	6,174	5,467	5,533	6,072
Colombia	85	3,056	2,157	5,213	4,880	8,051	8,524
Dominican Republic	86	9,784	3,551	13,335	6,847	7,500	8,826
Paraguay	87	4,639	915	5,554	4,552	3,470	3,209
Mexico	88	3,573	1,427	5,000	4,408	5,135	4,593
Other foreign-grown cigar leaf	89	11,182	2,180	13,362	9,626	10,595	11,122
	81-89	58,916	23,457	82,373	62,097	71,933	70,513
Foreign-grown Oriental and Aromatic	91	328,201	5,697	333,898	288,835	325,102	351,691
Foreign-grown flue-cured	92	14,848	10,001	24,849	9,752	15,695	20,308
Foreign-grown burley	93	7,063	6,093	13,156	5,113	7,710	7,009
Total imported cigarette and smoking tobacco leaf	91-93	350,112	21,791	371,903	303,700	348,508	379,008
Total all types	11-93	1,463,060	2,085,322	3,548,382	3,694,042	3,342,641*	3,125,276

1/ Totals include stocks of leaf reported in tobacco sheet. See separate reporting in table 4.

2/ These statistics represent the quantity of leaf tobacco reported as owned by all leaf tobacco dealers, manufacturers, quasi-manufacturers, growers' cooperative associations, warehousemen, brokers, holders, and owners except (a) the original growers of tobacco; (b) manufacturers who in the first three quarters of 1971, according to the returns of the Commissioner of Internal Revenue, manufactured less than 35,000 pounds of tobacco, less than 185,000 cigars, or less than 750,000 cigarettes, pursuant to the provisions of the Tobacco Stocks and Standards Act approved January 14, 1929, and the amendments thereto passed in the 72nd and 74th Congress.

3/ Subject to revision.

4/ For explanation of stocks included in this classification see footnote 2 on page 7.

* Revision.

All persons have equal rights to all services and benefits of USDA's Agricultural Marketing Service. If you feel you have been denied benefits or services because of race, color, creed, sex or national origin, write directly to: The Secretary of Agriculture, U.S. Department of Agriculture, Washington, D.C. 20250.

UNITED STATES DEPARTMENT OF AGRICULTURE
WASHINGTON, D. C. 20250

POSTAGE AND FEES PAID
U.S. DEPARTMENT OF
AGRICULTURE
AGR-101



OFFICIAL BUSINESS

PENALTY FOR PRIVATE USE, \$300

NOTICE

If you no longer need this publication, check here return this sheet, and your name will be dropped from the mailing list.

If your address should be changed, write the new address on this sheet and return the whole sheet to:

Tobacco Division
Agricultural Marketing Service
U. S. Department of Agriculture
Washington, D. C. 20250

Tobacco Inspection Services are available to all residents of the United States regardless of race, creed, or national origin. Violations should be reported to the Secretary of Agriculture, Washington, D. C. 20250