

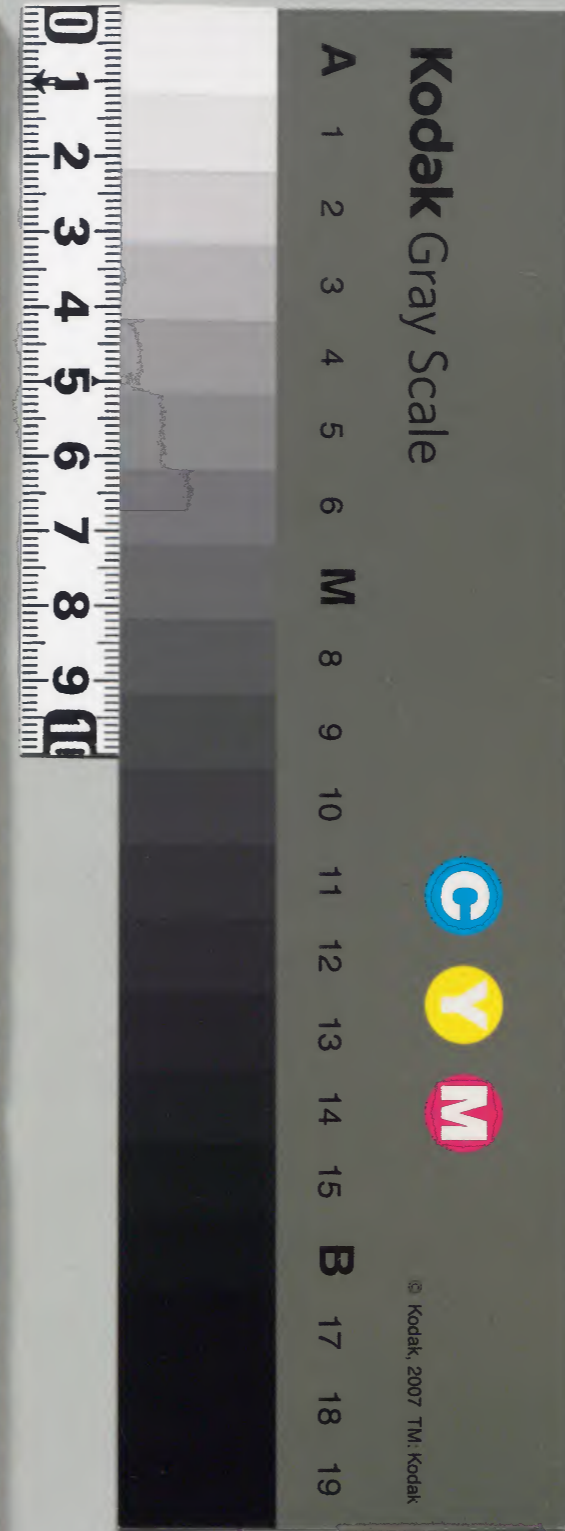
和書門
 日二五三八
 一三三
 八函號類
 三冊

175
 庫文閣内
 和書
 四三三八
 函一三
 冊一
 類

新

内閣文庫	
番號	和 42538
冊數	3 (1)
函號	203 175

203-175



Handwritten text in a cursive script, likely a historical document or manuscript. The text is written in a dark ink on aged, yellowish paper. It consists of approximately 20 lines of text, arranged in two columns across the two pages. The script is highly stylized and difficult to decipher without specialized knowledge of the language or dialect. The text appears to be a continuous narrative or record, possibly related to a specific event or location, as suggested by the visible characters like 'Canton' and 'Canton' in the right column.

Handwritten text in a cursive script, likely a historical document or manuscript, spanning two pages. The text is written in a dark ink on aged, yellowish paper. The script is dense and continuous across both pages, with some red ink markings interspersed. The right page contains approximately 12 lines of text, while the left page contains approximately 11 lines. The overall appearance is that of a well-preserved but aged historical record.

Handwritten text in a cursive script, likely a historical document or manuscript. The text is written in a dark ink on aged, yellowish paper. The script is dense and fills most of the page, with some lines starting with a small red mark. The text is arranged in approximately 20 horizontal lines across the page.

Handwritten text in a cursive script, likely a historical document or manuscript. The text is written in dark ink on aged, yellowish paper. The script is dense and fills most of the page. There are some red ink markings or corrections interspersed throughout the text. The text is written in a single column on each page, with some lines starting with a small red mark. The overall appearance is that of a well-preserved historical document.

Handwritten text in a cursive script, likely a historical document or manuscript. The text is written in a dark ink on aged, yellowish paper. It consists of approximately 15 lines of text, written in a dense, flowing style characteristic of early modern European cursive. The script is highly stylized and difficult to decipher without specialized knowledge of the specific dialect or language used. The text appears to be a continuous passage, possibly a letter or a record, with some words or phrases being more prominent than others due to larger size or bolding.

Handwritten text in a cursive script, likely a historical document or manuscript. The text is written in black ink on aged, yellowish paper. The script is dense and fills most of the page. There are several lines of text, with some words or phrases appearing to be underlined or written in a slightly different color (possibly red or brown ink). The text is arranged in a single column, reading from top to bottom. The handwriting is highly stylized and characteristic of a specific historical period or region.

Handwritten text in a cursive script, likely a historical document or manuscript, spanning two pages. The text is written in a dark ink on aged, yellowish paper. The script is highly stylized and difficult to decipher without specialized knowledge of the language or dialect. The text is arranged in approximately 15 horizontal lines across both pages, with some lines starting with a small red mark or initial. The overall appearance is that of a well-preserved but aged historical record.

Handwritten text in a cursive script, likely a historical document or manuscript. The text is written in black ink on aged, yellowish paper. It consists of approximately 18 lines of text, with some lines starting with a red dot or mark. The script is highly stylized and difficult to decipher without a key. The text is arranged in two columns, one on the left page and one on the right page.

Handwritten text in a cursive script, likely a historical document or letter, written on aged paper. The text is arranged in approximately 18 vertical columns, reading from right to left. The script is highly stylized and characteristic of the Edo period. The paper shows signs of age, including yellowing and some staining.

Handwritten text in a cursive script, likely a historical document or manuscript. The text is written in black ink on aged, yellowish paper. It consists of approximately 18 lines of text, with some characters highlighted in red ink. The script is dense and flowing, characteristic of historical Japanese calligraphy. The text is arranged in two columns, with the right column starting at the top and the left column starting at the bottom. The overall appearance is that of a well-preserved historical document.

Handwritten text in a cursive script, likely a historical document or manuscript. The text is written in a dark ink on aged, yellowish paper. The script is dense and fills most of the page, with some lines starting with larger, possibly decorative or initial letters. The handwriting is consistent throughout, suggesting a single scribe. The text is arranged in approximately 15 horizontal lines across the page.

Handwritten text in a cursive script, likely a historical document or manuscript. The text is written in black ink on aged, yellowish paper. The script is dense and continuous across both pages, with some red ink used for initials or corrections. The text is written in a style characteristic of early modern Japanese cursive (sōsho).

Handwritten text in a cursive script, likely a historical document or manuscript. The text is written in a dark ink on aged, yellowish paper. The script is dense and continuous across both pages, with some red ink used for initials or corrections. The text is written in a cursive style, possibly a form of shorthand or a specific dialect. The lines of text are roughly horizontal but follow the curve of the page. There are some small red dots and lines scattered throughout the text, possibly indicating specific characters or words of importance.

Handwritten text in a cursive script, likely a historical document or manuscript. The text is written in a dark ink on aged, yellowish paper. The script is dense and fills most of the page. The text is written in a cursive script, likely a historical document or manuscript. The text is written in a dark ink on aged, yellowish paper. The script is dense and fills most of the page. The text is written in a cursive script, likely a historical document or manuscript. The text is written in a dark ink on aged, yellowish paper. The script is dense and fills most of the page.

Handwritten text in a cursive script, likely a historical document or manuscript. The text is written in black ink on aged, yellowish paper. The script is dense and continuous across both pages, with some red ink used for initials or corrections. The text is written in a style characteristic of early modern European cursive, possibly a form of Italian or French script. The lines of text are closely spaced and run horizontally across the pages.

Handwritten text in a cursive script, likely a historical document or letter. The text is written in a fluid, connected style across multiple lines on both pages of the manuscript. The ink is dark, and the paper shows signs of age and wear.

Handwritten text in a cursive script, likely a historical document or manuscript. The text is written in black ink on aged, yellowish paper. The script is dense and continuous across the page, with some red ink used for initials or corrections. The text is arranged in approximately 15 horizontal lines. The characters are highly stylized and difficult to decipher without a key, but they appear to be a form of historical Japanese or Chinese script.

Handwritten text in a cursive script, likely a historical document or manuscript. The text is written in a dark ink on aged, yellowish paper. The script is highly stylized and difficult to decipher. The text is arranged in approximately 15 horizontal lines across the page. The ink shows some fading and bleed-through from the reverse side of the page.

Handwritten text in a cursive script, likely a historical document or manuscript. The text is written in black ink on aged, yellowish paper. The script is dense and continuous across multiple lines on both pages. Some characters are highlighted in red ink, possibly indicating specific names or important words. The text is written in a style characteristic of early modern Japanese calligraphy.

Handwritten text in a cursive script, likely a historical document or manuscript. The text is written in a dark ink on aged, yellowish paper. The script is dense and continuous across both pages, with some characters appearing to be in a different script or dialect than the surrounding text. The text is arranged in approximately 20 horizontal lines per page, with some lines starting with a small red mark or dot. The overall appearance is that of a well-preserved but aged historical record.

Handwritten text in a cursive script, likely a historical document or manuscript. The text is written in a dark ink on aged, yellowish paper. The script is dense and fills most of the page. The text is written in a cursive script, likely a historical document or manuscript. The text is written in a dark ink on aged, yellowish paper. The script is dense and fills most of the page. The text is written in a cursive script, likely a historical document or manuscript. The text is written in a dark ink on aged, yellowish paper. The script is dense and fills most of the page.

Handwritten text in a cursive script, likely a historical document or manuscript. The text is written in a dark ink on aged, yellowish paper. The script is dense and fills most of the page. The text is written in a cursive script, likely a historical document or manuscript. The text is written in a dark ink on aged, yellowish paper. The script is dense and fills most of the page. The text is written in a cursive script, likely a historical document or manuscript. The text is written in a dark ink on aged, yellowish paper. The script is dense and fills most of the page.

Handwritten text in a cursive script, likely a historical document or manuscript. The text is written in black ink on aged, yellowish paper. The script is dense and fills most of the page. There are several lines of text, with some words or characters highlighted in red ink. The text is written in a cursive style, possibly a form of shorthand or a specific dialect. The overall appearance is that of an old, handwritten document.

Handwritten text in a cursive script, likely a historical document or letter. The text is written in black ink on aged, yellowish paper. The script is dense and flowing, with some characters highlighted in red ink. The text is arranged in approximately 12 horizontal lines across the page.

