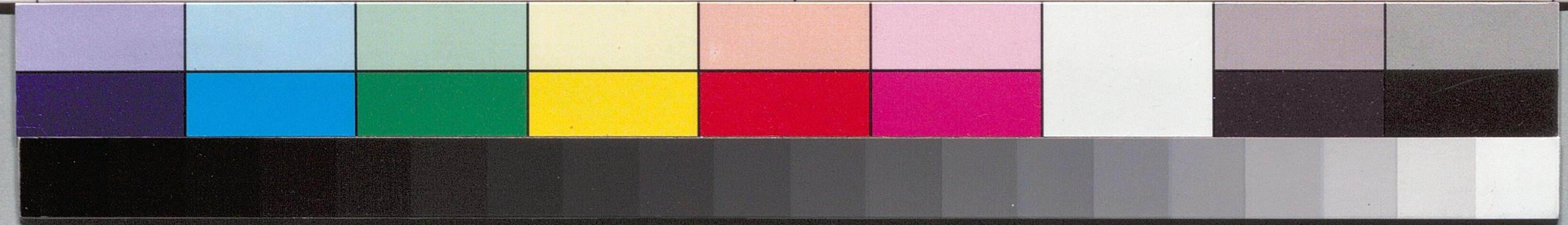
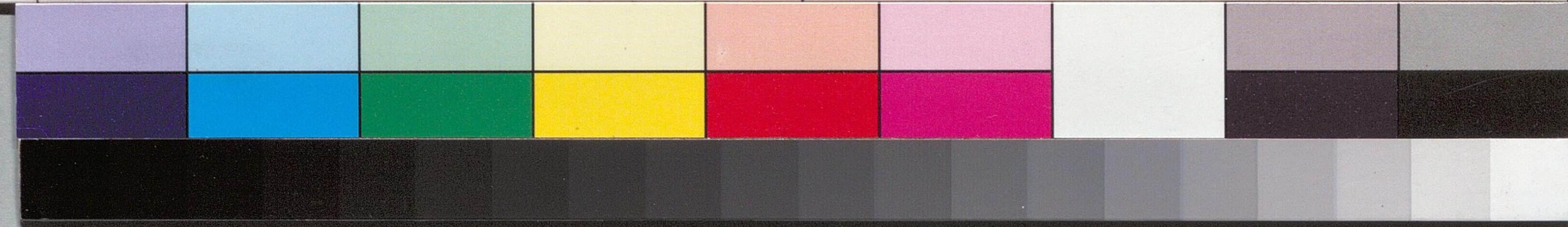


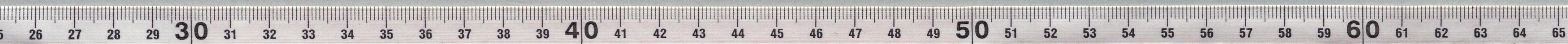
其之返金銀所六十七高地
書島樞密顧問官殿



平河町平井自十茶
中本島藏一印



Handwritten Japanese text on a vertical strip of aged paper. The characters are written in a cursive style (sōsho). The text is oriented vertically and appears to be a signature or a short note.



相與來去既忘年
適與子游其味
雖但托密牒心
聊與子游其味
家子方得中
多上已如
來物貴人生
洗原山魚小
以去中
口如海
了
幸勿切老
誠
六

