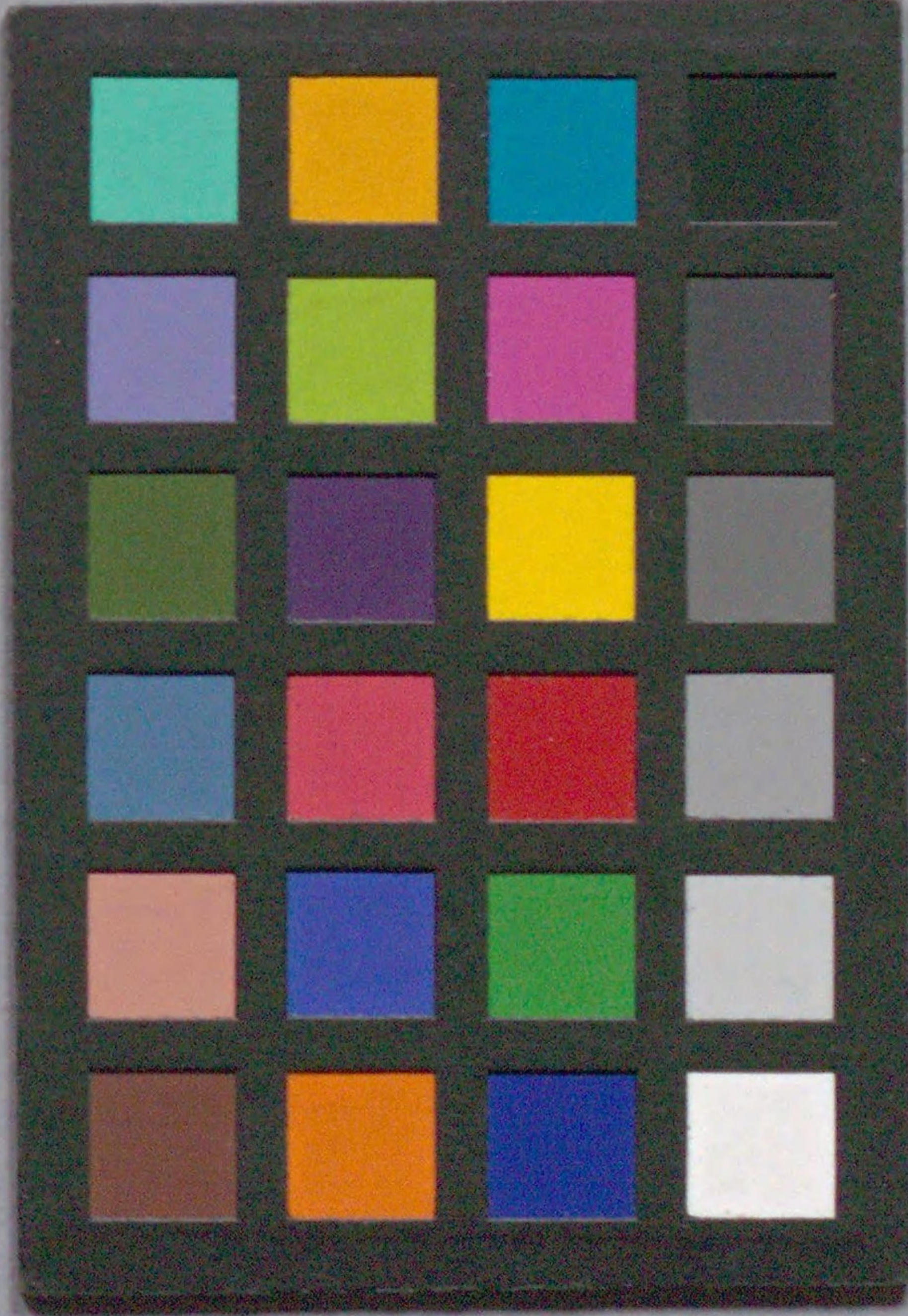
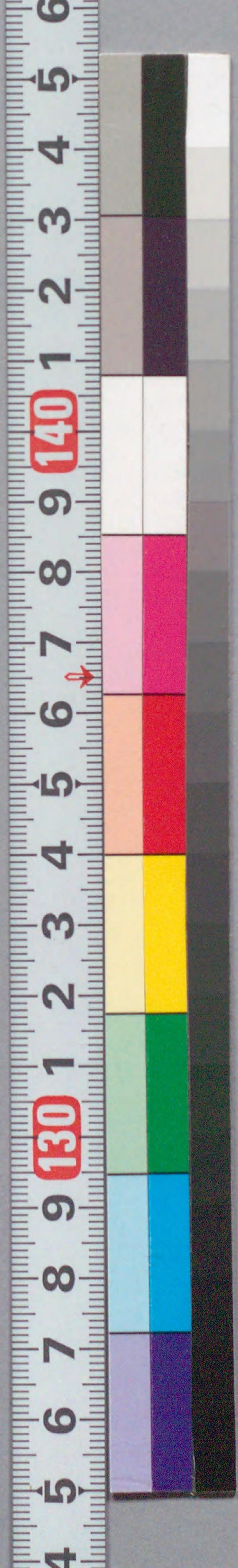


雷幸藏轟咄

以塚東子

後前編

207
734



国立国会図書館 雷幸藏轟咄：2編6巻 207-734

ガラス使用

雷幸藏轟咄前後六冊

此冊子不顯物語の永正昔二疋の悪狼よりろくろの
災と引出せしなりと綴就中忠臣の薄命奸者の邪計孝
子匹偶の不幸雷の雷小腹破赤子と生小童悪鳥小養と
烈女の忠誠恋魂凶兇恨と報るの説是ホと集て六帖の小
奇談と願ハ前後合して見ゆ一冊



文化四年丙申三月葛飾於松村某亭稿成
同三年丁辰孟春發行 竹塚東子著

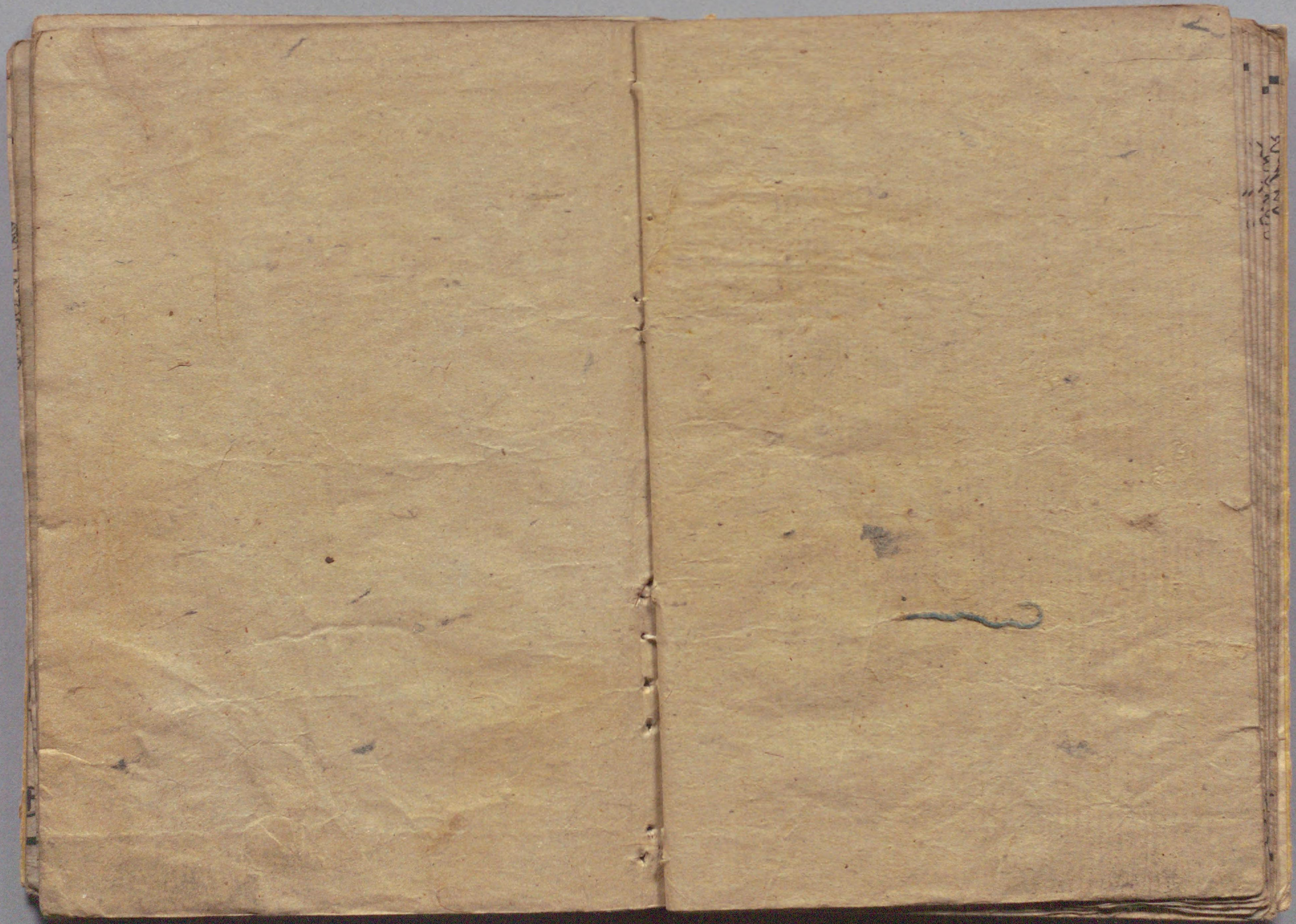






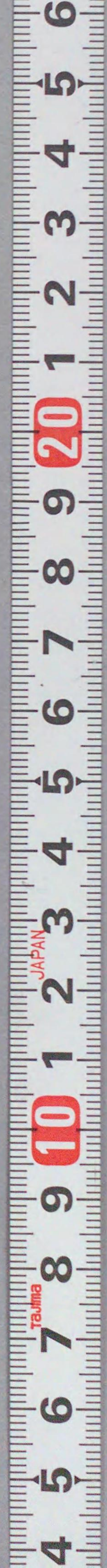


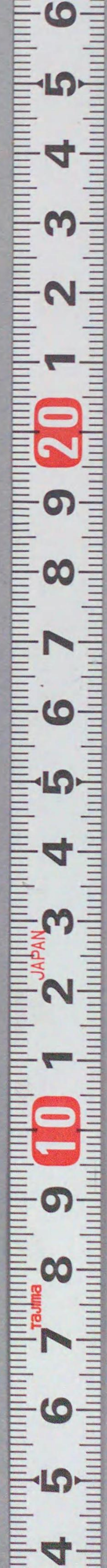


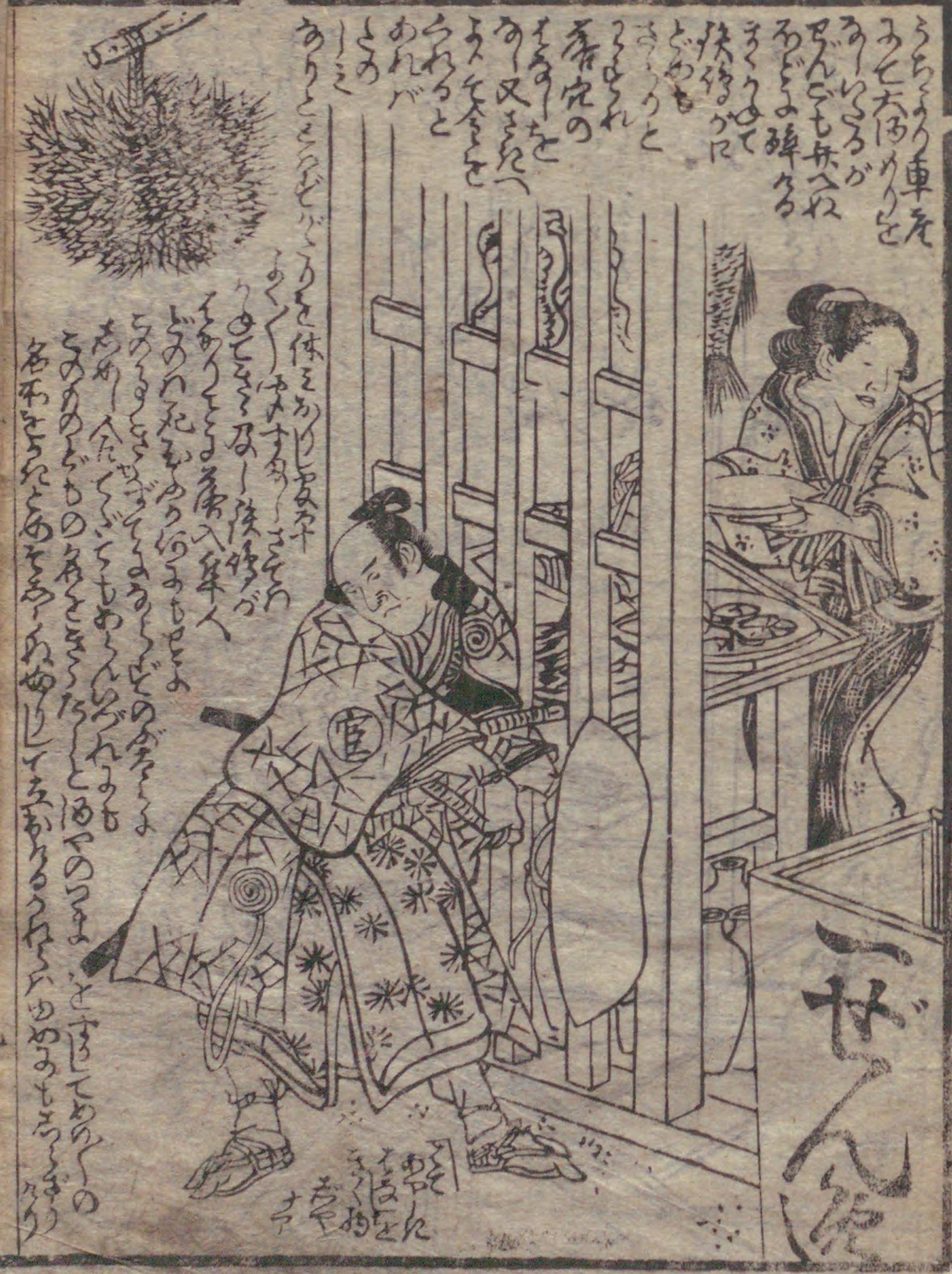


国立国会図書館 雷幸蔵轟咄：2編6巻 207-734

ガラス使用









Handwritten Japanese text in the upper right corner of the illustration's frame, written in a cursive style.

Handwritten Japanese text in the lower right corner of the illustration's frame, written in a cursive style.









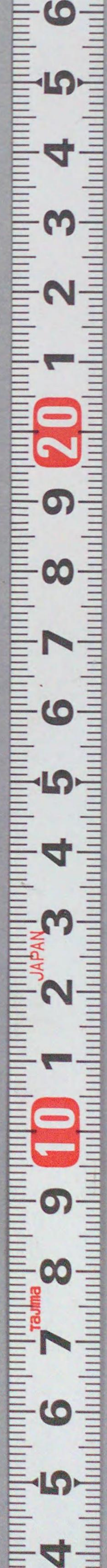
此の山に...
 大なる...
 上...
 此の...
 乃...

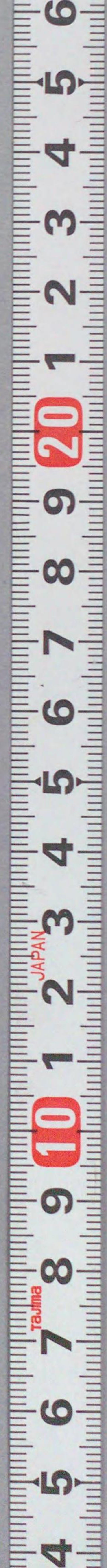
此の山に...



此の山に...
 大なる...
 上...
 此の...
 乃...

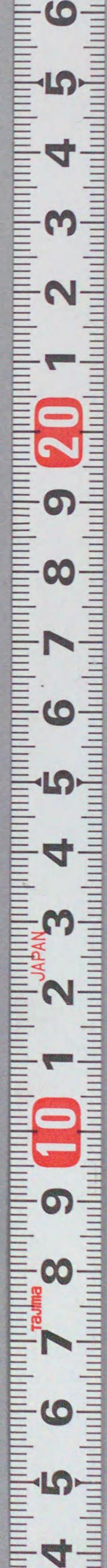
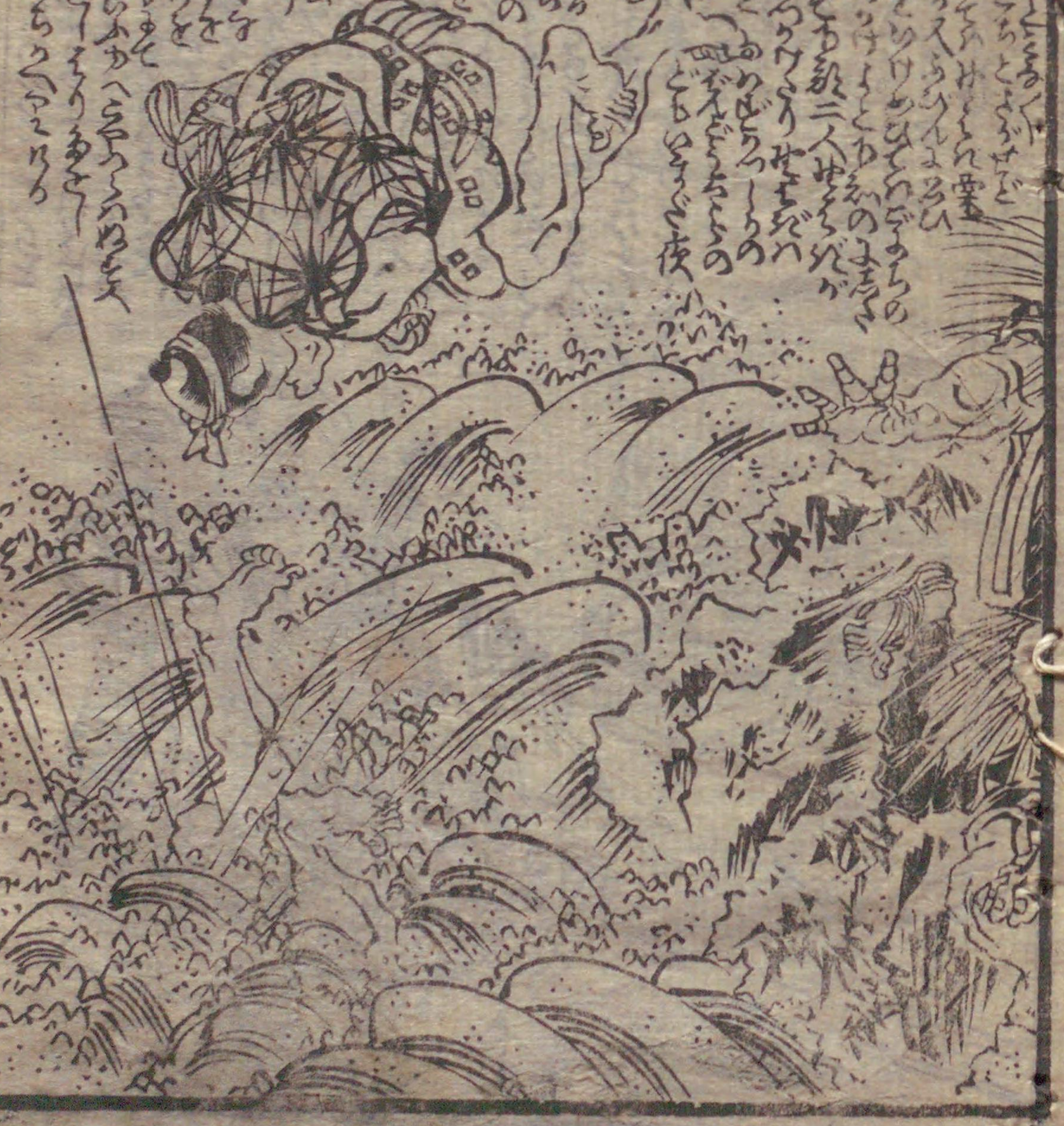


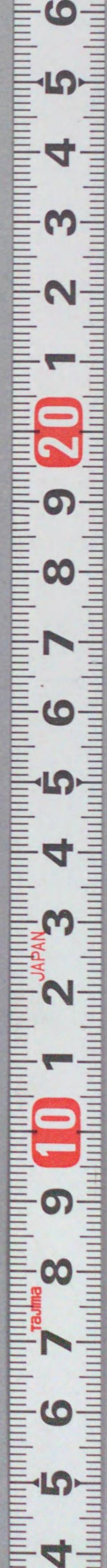


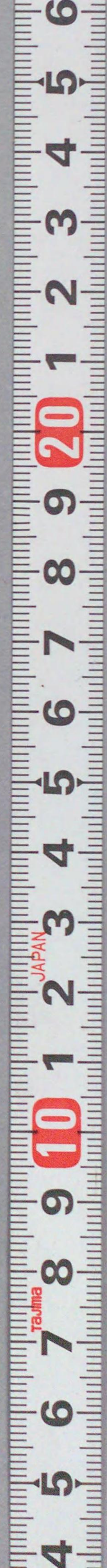




Handwritten text in vertical columns, likely a chapter introduction or commentary. The text is written in a cursive style (sōsho) and occupies the upper portion of the left page.



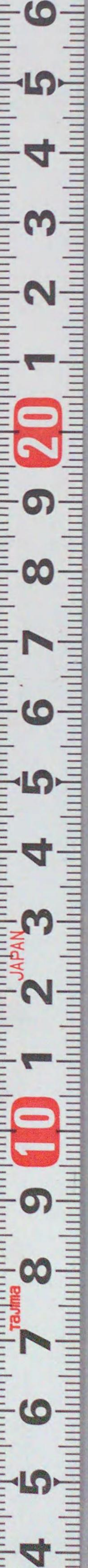






国立国会図書館 雷幸蔵轟咄：2編6巻 207-734

ガラス使用

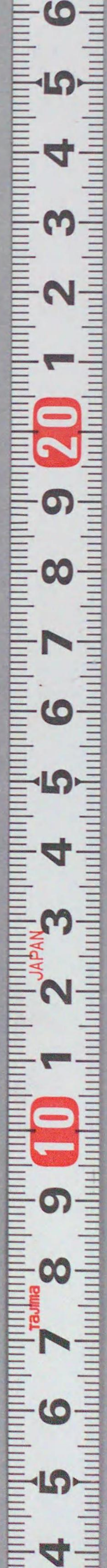


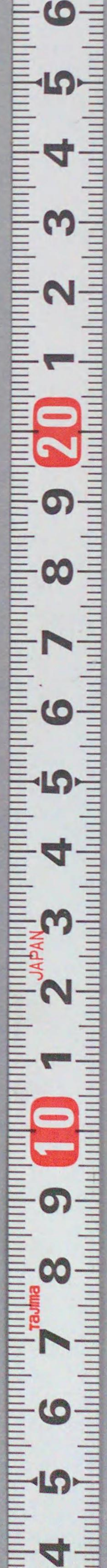


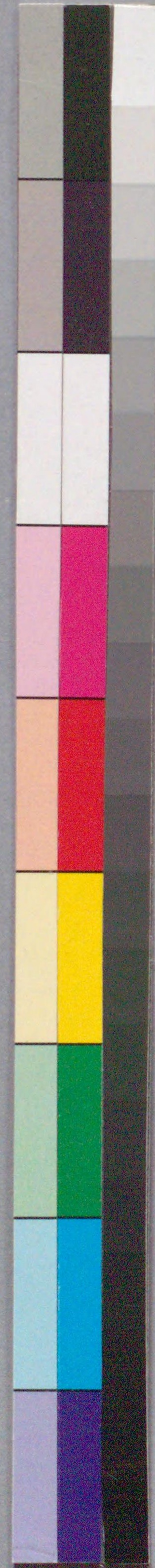
Handwritten Japanese text in vertical columns, likely a chapter introduction or commentary. The text is written in a cursive style and occupies the upper portion of the left page.



Handwritten Japanese text in vertical columns, likely a chapter introduction or commentary. The text is written in a cursive style and occupies the upper portion of the right page.





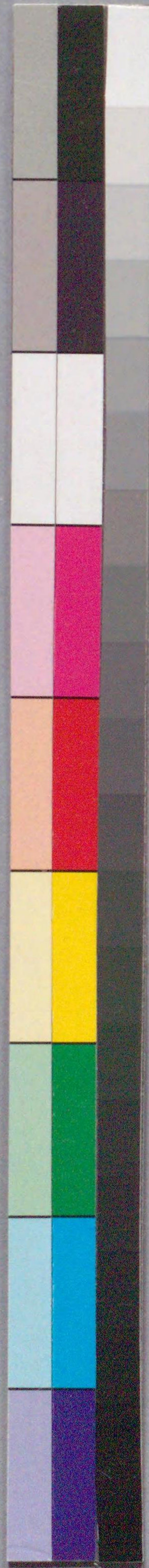


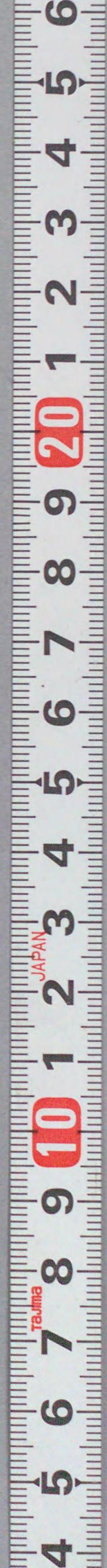
国立国会図書館 雷幸蔵轟咄：2編6巻 207-734

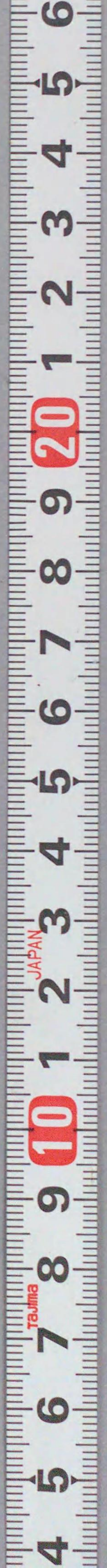
ガラス使用

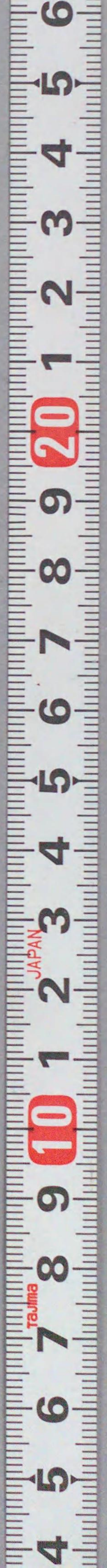
国立国会図書館 雷幸蔵轟咄：2編6巻 207-734

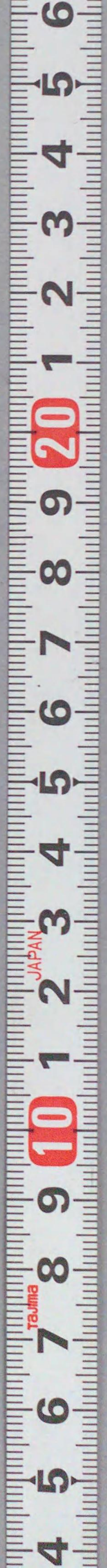
ガラス使用









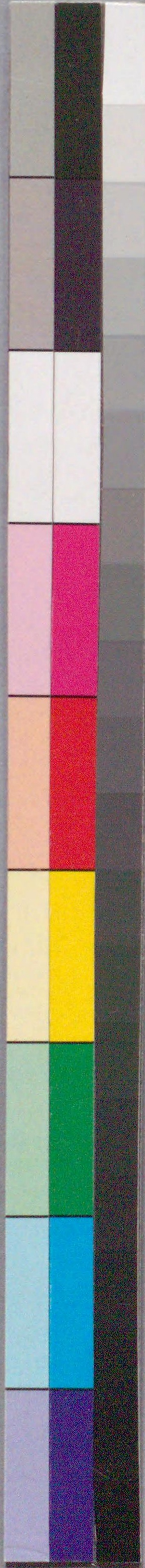


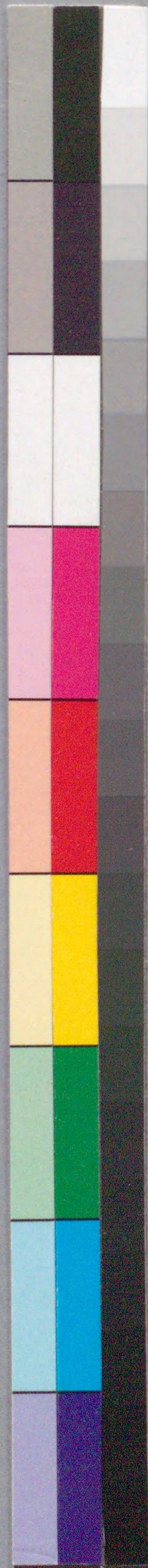
207
734

80

国立国会図書館 雷幸蔵轟咄：2編6巻 207-734

ガラス使用





国立国会図書館 雷幸蔵轟咄：2編6巻 207-734



ガラス使用

