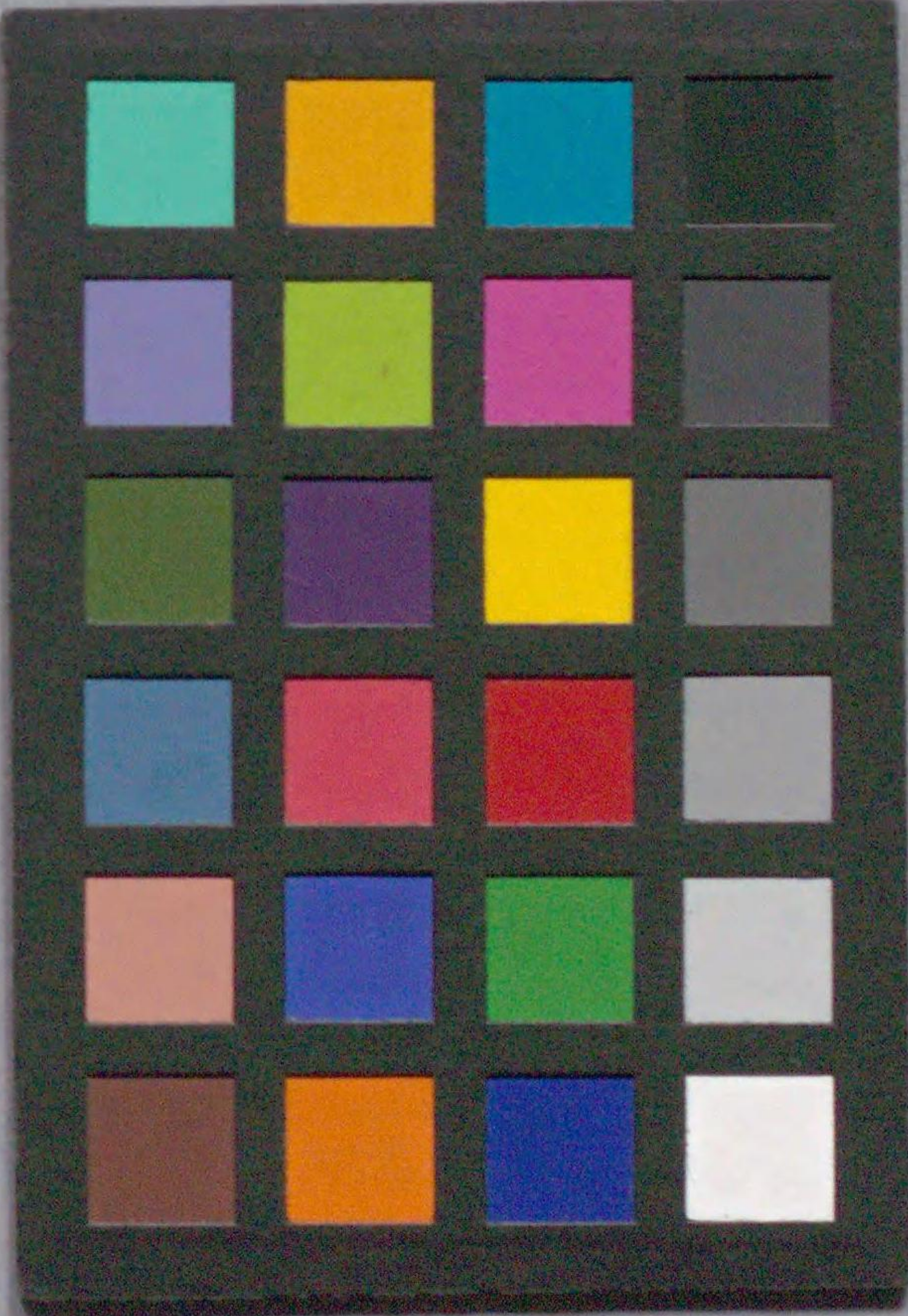
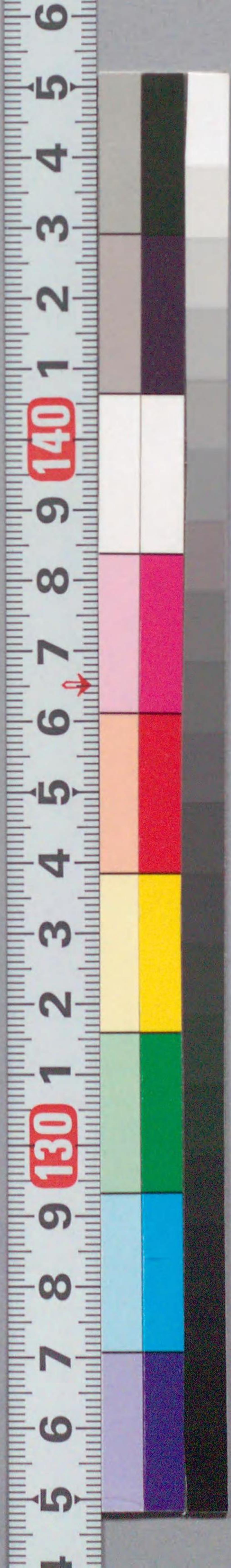




207
867

田抄
忍草壳対花籠

国立国会図書館 忍草壳対花籠 5巻 207-867



ガラス使用

折琴 絶琵琶 へ方丈記の時代 摸極折琴 宗玄へ袖鑑の當世向
 其名を一寸 仮枕 石の枕の信夫 船めせやめせ
 うら 鏡池 浮世のやうな 角田川 流るるの 末茶屋が 省板よ
 かけ 般若面も 名よひ きたる 鐘ヶ 浅川 原よ ちと 船まで 六 塚の 柳よ
 堤のさくら たるも 錦と 都鳥 月あも 雪よも 紅葉もも ちと ちと ちと ちと
 五人の乗合 ちと 口繪から 渡場を 五渡と ちと ちと ちと ちと ちと ちと
 芥生の里と ちと ちと 小歌の 歌川が 繪よ 操よ 今年も 茶を 狂せ 信夫と
 けいも 草冊子 ちと ちと せん ちと ちと ちと ちと ちと ちと ちと ちと

巳初春

柳亭種彦







角田川の
渡守

都鳥の
平云



富士名家の
下部
洞助

















Handwritten text in a cursive style, likely a commentary or poem, located above the illustration. The text is arranged in vertical columns.



Handwritten text in a cursive style, likely a commentary or poem, located above the illustration. The text is arranged in vertical columns.





Handwritten Japanese text in the upper right corner of the left page, likely a commentary or poem related to the illustration.

Handwritten Japanese text in the lower right corner of the left page, possibly a signature or additional notes.

Small handwritten text at the bottom left of the left page.



Handwritten Japanese text in the upper right corner of the right page, likely a commentary or poem related to the illustration.

Handwritten Japanese text in the lower right corner of the right page, possibly a signature or additional notes.

十日 (Ten days)





國貞画回種彦作

Handwritten text in a cursive script, likely a transcription of a Japanese text, located at the top of the right page.



Handwritten text in a cursive script, located at the bottom of the right page, below the illustration.

本舞臺上面作らるるの玉也
右の二つは...
水茶屋...
歌...
版元岩方...幕のク

Handwritten text in a cursive script, located on the left side of the top half of the page.

Handwritten text in a cursive script, located on the left side of the bottom half of the page.







Handwritten text in a cursive style, likely a form of shorthand or a specific dialect, covering the top and right portions of the page. The text is arranged in vertical columns.



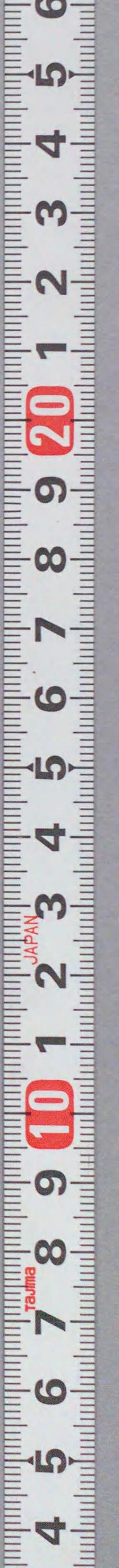
Small handwritten text at the bottom of the page, possibly a signature or a note related to the illustration.

Handwritten text in a cursive style, likely a form of shorthand or a specific dialect, covering the top and right portions of the page. The text is arranged in vertical columns.



Small handwritten text at the bottom of the page, possibly a signature or a note related to the illustration.







Handwritten text in a cursive script, likely a form of Japanese calligraphy, located above the illustration on the left page.

Handwritten text in a cursive script, likely a form of Japanese calligraphy, located below the illustration on the left page.



Handwritten text in a cursive script, likely a form of Japanese calligraphy, located above the illustration on the right page.

Handwritten text in a cursive script, likely a form of Japanese calligraphy, located below the illustration on the right page.









歌川國貞画 柳亭種彦作



Vertical text columns on the left side of the illustration, including names like '歌川國貞' and '柳亭種彦'.

Vertical text columns on the right side of the illustration, including names like '柳亭種彦' and '歌川國貞'.

忍草賣對花籠

全五冊 柳亭種彦作 歌川國貞画

肝涼圓 十アア入

安達原男一軒家

全六冊 東里山人作 歌川國貞画

は云九茶小加...

光明真言誓仇討

全五冊 春亭三曉作 歌川國貞画

せんきれ葉...

噓氣傳未聞春未記

全五冊 東里山人作 歌川美丸画

は云九茶小加...

長舌の桂川戀仇浪

全三冊 若溪菴作 歌川國貞画

は云九茶小加...

右不辨出来はいけ外新板返り出来はいけ

本問屋 江戸横山町二丁目 岩屋喜三郎



国立国会図書館 忍草壳対花籠 5巻 207-867



ガラス使用

