

Historic, archived document

Do not assume content reflects current scientific knowledge, policies, or practices.

VICK'S GARDEN & FLORAL GUIDE

U.S. Department of Agriculture
Washington, D. C.

LIBRARY
RECEIVED
SEP 11 1906

Autumn
1906



FALL BULBS AND PLANTS

Premiums and Offers to Clubs

Where Bulbs and Plants are not ordered in special low-priced collections

Persons sending	\$ 1.00	may select Bulbs, Plants or Seeds to the amount of	\$ 1.10
Persons sending	2.00	may select Bulbs, Plants or Seeds to the amount of	2.25
Persons sending	3.00	may select Bulbs, Plants or Seeds to the amount of	3.45
Persons sending	4.00	may select Bulbs, Plants or Seeds to the amount of	4.60
Persons sending	5.00	may select Bulbs, Plants or Seeds to the amount of	5.75
Persons sending	6.00	may select Bulbs, Plants or Seeds to the amount of	6.90
Persons sending	7.00	may select Bulbs, Plants or Seeds to the amount of	8.05
Persons sending	8.00	may select Bulbs, Plants or Seeds to the amount of	9.20
Persons sending	9.00	may select Bulbs, Plants or Seeds to the amount of	10.35
Persons sending	10.00	may select Bulbs, Plants or Seeds to the amount of	11.50

SUGGESTIONS TO ALL WHO BUY.

We will send Seeds, Bulbs and Plants, by mail, to any part of the United States, at prices named in this Catalogue, postage paid, unless otherwise noted.

ALL SEEDS, BULBS AND PLANTS SENT PREPAID.

The only exceptions to this rule are *in cases especially noted*. Persons living at the most distant parts of the country will no longer be compelled to buy poor goods or none, but can send their orders with the money, and in a few days the articles will arrive in good order at their post office, or express office, where they can be obtained without further cost, as every package, except where noted, will be *paid through to destination*. Our customers will oblige us very much by giving their nearest Express office and name of the company delivering goods, as it is often better to ship heavy goods by express. We guarantee the safe arrival of packages of Seeds, Bulbs and Plants in good condition. Whenever writing in reference to previous order, be sure to mention the post office to which goods were to be shipped, and sign the same name as in first order. When customers fail to receive their Seeds, Bulbs or Plants in a reasonable time, they should inform us, and also send a copy of their order, stating the amount of money, and in what manner it was sent. No goods sent C. O. D.

HOW TO SEND MONEY.

ALL MONEY MAY BE SENT AT OUR RISK AND EXPENSE if forwarded according to directions in either manner here stated. Please send money with the order.

When remittances are not made according to the following directions we disclaim all responsibility.

1—**Post Office Money Order.** If your Post Office is a Money Order office, send a money order, which will cost as follows: Sums not exceeding \$2.50, 3 cents; over \$2.50 and not exceeding \$5.00, 5 cents; over \$5.00 and not exceeding \$10.00, 8 cents. This is the best way, and we advise our friends, when possible, to send a P. O. Money Order.

2—**Express Money Order.** Express Money Orders, to be obtained at all offices of the American, United States, Adams, Pacific, National, Wells, Fargo & Co, and other Express companies.

3—**Draft on New York.** A Draft on New York can be obtained at any Bank, and this is sure to come correctly.

4—**Registered Letter.** When money cannot be sent by either of the first three methods, it may be sent in a Registered Letter. The cost of registering is eight cents.

The expense of forwarding money in either of the above ways we will pay, and the cost may be deducted from the amount forwarded.

CHECKS—When individual checks are sent please add 15 cts. to cover cost of collection at the Bank.

DON'T FORGET TO WRITE YOUR NAME, POST OFFICE AND STATE.

We will send VICK'S GARDEN AND FLORAL GUIDE for 1907 free to all customers of 1906; to others it will be mailed free upon application. If any customer fails to receive a GUIDE before February, 1907, please send us a postal card stating the fact, with name and post office.

INSECTICIDES

Dalmatian Insect Powder. The true "Persian" insect powder. $\frac{1}{4}$ lb., 20 cents; $\frac{1}{2}$ lb., 35 cents; lb., 55 cents; postage paid.

Fir Tree Oil. For all kinds of sucking insects, whether on root, stem or foliage, such as Green and Black Fly, Mealy Bug, Scale, Aphids, etc. Valuable also for animal parasites and insects. $\frac{1}{2}$ pint, 40 cents; pint, 75 cents; qt., \$1.25; gal., \$4.00; charges not prepaid.

Sulpho-Tobacco Soap. Used as a wash for roses, trees, and house plants. Very desirable for insects on animals. 3-oz. cake 13 cents; 8-oz. cake 28 cents; postage paid.

Tobacco Dust (The Black Stuff). 1-lb., 20 cts.; postage paid. Special price on large quantities.

Nicoticide. (Liquid.) Can be used for either fumigating or spraying. The strongest extract of tobacco on the market. $\frac{1}{4}$ lb. 70 cents; $\frac{1}{2}$ lb. \$1.25; 1 lb. \$2.50; 8 lbs. (one gallon) \$15.00; charges not prepaid.

Nicofume. A tobacco-paper insecticide for fumigating only. Small size, 24 sheets, 75 cents; medium size, 144 sheets, \$3.50; large size, 288 sheets, \$6.50; charges not prepaid.

Kerosene Emulsion. 65 per cent. oil. For scale insects, aphids, etc. Quart, 40 cents; gal., \$1.00; charges not prepaid.

Whale Oil Soap. Used as a wash for roses, trees, and plants affected with insects. 1-lb. box, 30 cents, postage paid. Special price on large quantities.

Note. Liquids and Poisonous Powders cannot be sent by mail.

Vick's Garden and Floral Guide

For the Autumn of Nineteen Hundred and Six

Bulbs in the House

THE window culture of Hyacinths, Tulips, and Narcissus has become very popular, and is a most attractive way of raising these plants, which by their beauty and fragrance grace our living rooms in winter. The general treatment of these different kinds of bulbs is the same. A light, porous soil just suits them—some garden loam, leaf mould and sand mixed together. Use five-inch pots for Hyacinths and Narcissus. Place some pieces of broken pot in the bottom so as to secure free drainage and then fill up to about two inches of the top, take a bulb and set it on the soil in the center of the pot, then fill in soil until the bulb is about two-thirds covered. Set the pot down once or twice on the bench with a sharp rap so as to settle the soil and



SCENE ON A BULB FARM IN HOLLAND. OUR HYACINTHS ARE GROWN HERE

bulb down well. Tulips should be potted the same way, only there may be as many as four or five bulbs in a five-inch pot, and six in a six-inch pot, and they can be buried somewhat deeper in the soil, so that only the points show above the surface. At least three-fourths of an inch of space should remain between the top of the soil and the rim of the pot in order to hold water whenever watering is necessary. When the potting is finished as above described, give water with a watering can sufficient to wet the soil all through.

Rooting the Bulbs

Now the pots should be placed away in a dark room or in a cellar, to remain several weeks while the bulbs are making roots, for it is necessary that these should form before the growth of the leaves or flowers. Not much heat is needed for root-growth, and a temperature of 50° is best. It will be a good precaution to take, to set the pots in a box and fill in soil between the pots to keep them from drying out, and then cover the box over closely so that mice cannot get in. Here they can remain from six to ten weeks, or until they have quite filled the pots with roots. Some will root faster than others and will show signs of leaf-growth, and these can be taken up first to the light, while the others are left to bring out later, thus causing them to bloom at different times, successively over a number of weeks. They should be placed in a good light in a temperature of 50° to 60° , and freely ventilated on fine days. If one has not pots to use, bulbs can be planted in boxes in the same way as here described. Crocus and Snowdrops should be similarly treated in house culture.

Bulbs in the Garden

THE Dutch bulbs do well in ordinary garden soil if it is dry, that is if water does not lie on it in the winter. A compact clayey soil may be improved for bulbs by mixing with it a quantity of sand. A sandy loam is all that is desirable. The ground should be spaded deep immediately before planting. When planting a large number in a border or bed it is well to remove entirely the upper layer of soil to a depth of four inches and then spade the lower soil a good depth. Rake it smooth and level, and, if possible, spread over the surface a layer of sand an inch in depth; this provides a bed for the roots to run in freely, and enables them to make a vigorous growth from the start. Providing a bed of sand is not absolutely necessary, but if it is convenient to do so it is an advantage. The largest bulbs are now set on the bed, from four to six inches apart, and Crocus, Snowdrop, etc., about two inches apart, and when all are in place the surface soil that was removed is gently spread over them without disturbing them, and they thus get covered some three or four inches in depth. At the north bulbs should by preference be planted from the last of September up to November, while at the south November will be early enough.



* ALL OF OUR TULIPS COME FROM THIS GREAT TULIP FARM IN HOLLAND

After the Bulbs are Planted

WHEN the bulbs are set and covered, then before hard freezing weather comes they will need to be covered with leaves or litter, enough to prevent the ground from freezing much, for the bulbs are injured by the movement of the soil about them that takes place when the ground thaws, tearing or straining the roots, and enfeebling the plants. Early in spring the most of the covering can be removed, leaving a little to remain over the bed until the leaves begin to push, and then clearing it all off.

After the Bulbs have Bloomed

BULBS in a shrubbery border may be left after blooming without disturbance, and each spring they will renew their growth and bloom. At the last of May or early in June summer-blooming plants can be set in between the bulbous plants whose ripening foliage will soon after wither and disappear; or the bulbs can be carefully lifted with soil attached, taken away, and placed in a trench previously prepared for them in a half shady place, where they can remain until the foliage has decayed, when the bulbs can be removed from the soil and be placed away in a dry, airy, cool place, to remain until time for planting in early autumn.

* The engravings on this and the preceding page are views on one of the largest bulb farms near Haarlem, Holland. Bulbs vary in price according to quality, as do other commodities, and to get good bulbs of the age and size required to produce superior flowers, cheap stock must be avoided. We procure our supply from the most reliable grower in Holland, and we can truthfully say there is no better stock grown than we are offering this fall, and that our prices are very reasonable. *It pays to buy the best.*



HYACINTHS

FOR HOUSE AND GARDEN



FOR very early blooming in the house, the White Roman Hyacinth is a great favorite. Its flower spikes are looser and shorter than those of the Holland Hyacinth, but, instead of one, each bulb has usually two or three flower-stems. Three or four bulbs of Roman Hyacinths potted early in the season, in a six-inch pot, will make fine blooming specimens at the winter holidays. Under the same conditions the Holland Hyacinths bloom later, and a single bulb is sufficient for a five-inch pot. In a six-inch pot three bulbs may be placed, and if the flowers are in three shades,—red, white and blue,—a very pretty effect is produced. The time of blooming may be regulated to some extent by holding the potted bulbs in the dark and keeping in a cool place, thus retarding the bloom and allowing the plants to be brought along successively for a number of weeks. For planting in quantities in the garden it is more economical to use the unnamed varieties, the bulbs costing less; these can be planted to form a mass by itself, mixed if so desired, or in varied designs.



PARTIAL VIEW OF A BED OF HYACINTHS, HIGHLAND PARK, ROCHESTER, N. Y.

Collection "A," for House Culture

- Robert Steiger, deep red.
- Baron Van Thuyl, pink.
- Mr. Plimsoll, white.
- Grande Blanche, bluish white.
- Grande Maitre, porcelain blue.
- Marie, dark blue.

Price, 55 cents, postage prepaid

Collection "B," for Out-door Culture

- Princess Royal, red.
- Princess Louise, rose.
- Non plus ultra, pure white.
- Isabella, rosy white.
- Van Speyk, light blue.
- Othello, dark blue.

Price, 55 cents, postage prepaid

Collections A and B postpaid for \$1.00.

Red, White and Blue Hyacinth Bed

Six Feet in Diameter
127 Large, Sound Bulbs

We have made the following Collection so low in price that all can afford to have a beautiful bed in bloom early in spring, at a time when there is a scarcity of flowers.

Center	1 bulb, Blue
First row	6 bulbs, Blue
Second row	12 bulbs, Blue
Third row	18 bulbs, White
Fourth row	24 bulbs, White
Fifth row	30 bulbs, Red
Sixth row	36 bulbs, Red
Total	—127 bulbs

Delivered anywhere in the U. S. for \$5.00

Vick's Selection of Best Named Hyacinths

12 cents each, or \$1.20 per dozen, postage prepaid.

Not less than six supplied at dozen rates. Special prices on large quantities.

The finest varieties and best bulbs, purchased from the best growers in Holland, and imported direct to meet the desires of those who want choice bulbs for the conservatory or window, or to plant in beds of design in the garden. The single-flowered varieties usually give better satisfaction than the double ones, and especially so in house-culture.

SINGLE RED AND ROSE

- Amy.** Bright scarlet.
Charles Dickens. Delicate pink.
Fabiola. Rose; handsome bells and large spike.
Garibaldi. Brilliant carmine.
General Pelissier. Bright carmine.
Gertrude. Rosy pink; large, upright spike.
Gigantea. Blush pink, large flowers and very large truss.
Lord Macaulay. Bright rosy carmine; extra fine.
Moreno. Fine pink.
Norma. Light pink, large bells and fine truss.
Roi des Belges. Dark red; early, fine spike.
Romeo. Brightscarlet.

SINGLE WHITE

- Alba Superbissima.** Pure white.
Albertine. Pure white.
Baroness Van Thuyt. Flowers snow white; fine large truss; one of the best for any purpose.
Grandeur a Merveille. Blush white.
La Grandesse. Fine snow white.
L'Innocence. Snow white; extra fine spike.
La Franchise. Waxy white.
Madame Van der Hoop. Pure white, large bells.
Paix de l'Europe. Pure white.
Pavilion Blanc. Pure white.
Queen Victoria. Pure white.
Voltaire. Creamy white.

SINGLE YELLOW

- Ida.** Rich golden yellow.
King of the Yellows. Deep yellow.
Obelisque. Fine pure yellow.

SINGLE PURPLE

- Haydn.** Lilac-mauve, large truss.

SINGLE BLUE

- Baron Van Thuyt.** Dark blue.
Bleu Mourant. Purple blue.
Charles Dickens. Bright blue shading to porcelain blue; excellent.
Czar Peter. Silvery blue.
Grand Lilas. Light porcelain.
King of the Blues. Rich, dark blue.
Leonidas. Light blue, large spike.
Pieneman. Dark porcelain blue.
Queen of the Blues. Light blue.
Regulus. Porcelain blue, large bells.
Schotel. Light lavender; extra fine

DOUBLE RED and ROSE

- Bouquet Royal.** Salmon pink.
Bouquet Tendre. Carmine rose, early.
Czar Nicholas. Blush pink.
Grootvoorst. Blush pink; large, early.
Le grand Concurrent. Pale rose.
Lord Wellington. Extra fine pink.
Noble par Merite. Deep rose, early.
Prince of Orange. Dark rose, fine.



SINGLE HYACINTH "AMY"

DOUBLE WHITE

- Bouquet Royal.** Pure white, yellow center.
Grootvoorstin. Creamy white, large bells.
La Tour d'Auvergne. Pure white, large bells; very early.
La Virginite. Blush white; early.
Prince of Waterloo. Waxy white, large bells.
Non Plus Ultra. Pure white.

DOUBLE BLUE

- Bloksberg.** Clear porcelain blue.
Charles Dickens. Dark blue, handsome truss.
Crown Prince of Sweden. Violet blue.
Garrick. Lilac blue; fine spike.
General Antinck. Light blue, large bells and truss.
Lord Raglan. Dark blue, large bells.

DOUBLE YELLOW

- Gœthe.** Light yellow, fine truss.
Jaune Supreme. Deep yellow, fine.

ROMAN HYACINTHS

These Hyacinth Bulbs are extra selected, and will give the greatest satisfaction, each bulb producing several graceful spikes. We advise early planting, so as to have the bulbs well rooted before commencing to force them. Early delivery can best be secured by sending your orders at once. **Early Roman White.** Each 6 cts.; dozen, 50 cts.; hundred, \$3 50.

The Hyacinths and Tulips I got last fall came out grandly this spring. There was nothing in our flower market that could equal them; they were the admiration of all the neighborhood.

J. B. DARBY
 Norwood, Ohio.

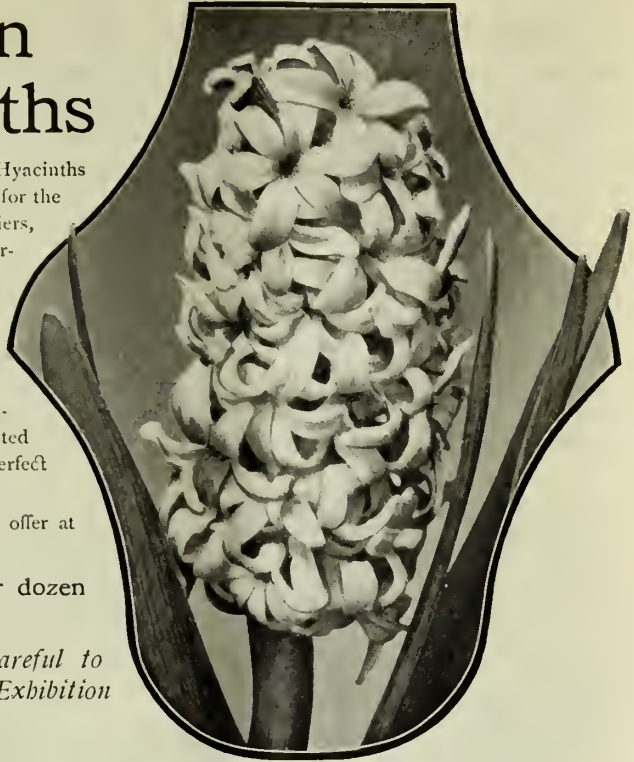
Exhibition Hyacinths

THIS extra choice grade of Hyacinths has heretofore been reserved for the requirements of European fanciers, who grow them for Exhibition purposes. For the benefit of those of our customers who wish for the very finest bulbs of the choicest varieties for pots and glasses, we have imported from one of the best growers in Holland, at a very high price, a limited number of the largest and most perfect bulbs to be obtained.

These especially fine bulbs we offer at the comparatively low price of

15 cents each, \$1.50 per dozen
postage prepaid

In ordering, please be careful to designate these as Vick's Exhibition Varieties.



SINGLE RED AND ROSE

Garibaldi. Dark red; fine truss.
Fabiola. Pink, carmine striped; very large spike.
Gen. Pelissier. Brilliant carmine; splendid spike; early.
Gertrude. Rosy pink; large, upright spike; extra fine.
Lady Derby. Waxy pink; new.
Lord Macaulay. Bright rosy carmine; very large bells.
Moreno. Waxy pink; large bells, extra good truss.
Rose a Merveille. Blush rose; fine truss.

SINGLE WHITE

Baroness Van Thuyl. Pure white; fine large truss.
Grande Blanche. Blush white; large bells and spike.
Grandeur a Merveille. Fine large truss of large bells.
La Grandesse. Extra fine pure white; large bells and grand spike.
L' Innocence. Extra fine spike of snow-white bells.
Paix de l' Europe. Extra large spike of snow-white drooping bells.

SINGLE BLUE AND PURPLE

Charles Dickens. Blue, shading to porcelain; handsome tall spike; excellent.
Gen. Havelock. Blackish purple; extra fine.
Grand Lilas. Light porcelain; extra fine large truss and bells.
Grand Maitre. Dark porcelain blue; grand spike of large bells.
King of the Blues. Rich dark blue; large compact spike.
Queen of the Blues. Clear light blue; fine spike of very large bells.
Haydn. Lilac-mauve; fine large truss.

EXHIBITION HYACINTH

FROM VICK'S TRIAL GROUNDS AT DESPATCH
One-half Natural Size

SINGLE YELLOW

Ida. Rich pure yellow; fine large spike.

DOUBLE RED AND ROSE

Kastanjebloem. Extra fine bluish.
Le Grand Concurrent. Pale rose, shaded with pink; fine spike of large bells.
Lord Wellington. Extra fine blush pink; large spike and bells.
Marie de Medicis. Rose; fine large bells and spike.
Prince of Orange. Deep rose; fine spike.

DOUBLE WHITE

Bouquet Royal. Pure white, yellow center; fine spike.
Isabella. Fine blush white; grand spike and large bells. Excellent.
La Tour d' Auvergne. Pure white; large bells; extra fine spike; very early.
Prince of Waterloo. Pure white; large bells and truss.

DOUBLE BLUE

Bloksberg. Clear porcelain; fine large spike.
Charles Dickens. Dark blue, shaded lilac; handsome compact truss.
Garrick. Extra fine dark blue.
Mignon de Dryfhout. Pale blue; fine truss.

DOUBLE YELLOW

Jaune Supreme. Deep yellow; fine spike.

At the single and dozen price we pay postage to destination.

Vick Quality means the Best in Bulbs as well as Seeds **Vick Quality**
Thousands of satisfied Customers please

Unnamed Hyacinths in Separate Colors

Selected especially for Garden Planting and Winter Forcing for Cut Flowers

Bulbs of Unnamed Hyacinths are comparatively cheap, and can be used in large numbers at no great expense. They are also used largely for winter forcing for cut flowers, and for window plants; when, however, the finest specimen pot plants are desired the named bulbs should be used.

Single Varieties

Dark Red	Dark Blue
Rose and Pink	Light Blue
Red, all shades	Blue, all shades
Pure White	Yellow, all shades
Blush White	Mixed White
Vick's Special Single Mixed	

Double Varieties

Dark Red	Dark Blue
Rose and Pink	Light Blue
Red, all shades	Blue, all shades
Pure White	Yellow
Blush White	Mixed White
Vick's Special Double Mixed	

Each, 6 cents; dozen, 65 cents; delivered free to any postoffice in the United States.
Dozen, 50 cents; hundred, \$3.50; delivered at Express Office, Rochester, N. Y., charges not prepaid.

GRAPE HYACINTHS

Also called "Blue Lily of the Valley." About six inches high and very much resembles a bunch of grapes. Planted in groups of a dozen or so, the bulbs produce a mass of blossoms. Plant very hardy. For winter blooming in the house they excel.

Blue. Two for 5 cts.; dozen 20 cts.; hundred 80 cts.

White. Three for 10 cts.; dozen 30 cts.; hundred \$1.70.

FEATHERED HYACINTHS

A peculiar species, improving daily in beauty after once commencing to bloom, and developing finally into an immense blue feathery plume about twelve inches high. It is very desirable for winter blooming, and cultivated as other Hyacinths it will give perfect satisfaction. Three for 5 cts.; dozen 30 cts.; hundred \$1.70.



OUR TRIAL GROUNDS. SPRING SCENE IN THE BULB GARDEN

WE make a specialty of supplying Bulbs and Plants for Parks, Public Grounds, and large private places. We shall be pleased to furnish information and to quote special prices to parties interested in such lines.



TULIPS



THE single early varieties in mixture set along a border produce a brilliant show. Plant the bulbs in beds or borders about six inches apart, with each color in a mass by itself to produce the strongest effect.

DUC VAN THOL TULIPS—The earliest and lowest growing kinds. Good for pot and garden culture.

TOURNESOLS—The next earliest, coming in two colors, orange-red and yellow; flowers double.

THE SINGLE EARLY TULIPS—Form a very charming class and of a great variety of colors.

THE DOUBLE TULIPS—The same range of colors, and the flowers of long duration.

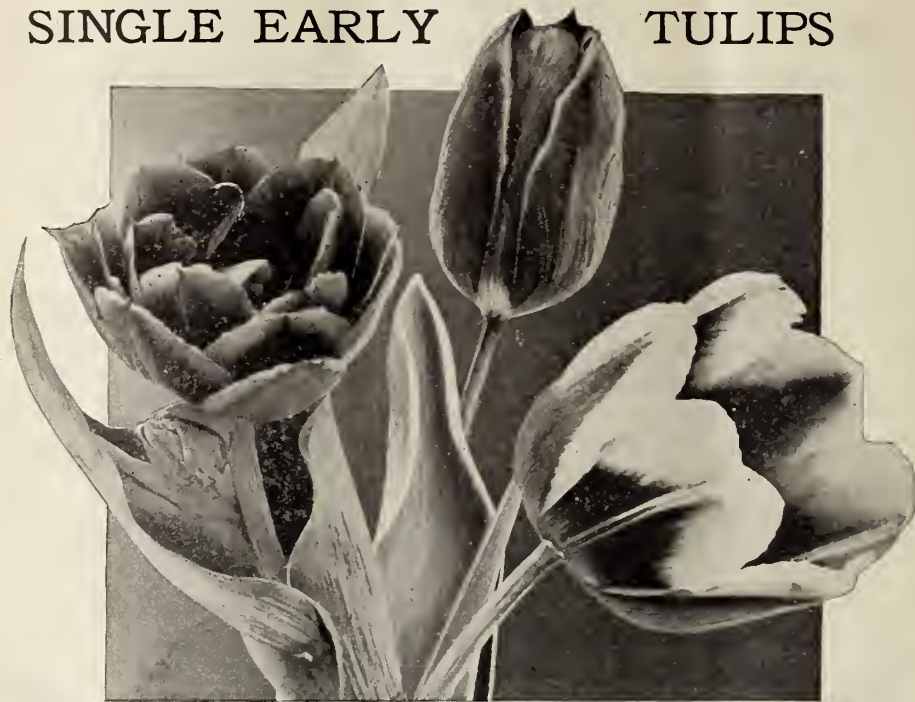
THE LATE TULIPS—Have the tallest flower stems, are of an indefinite number of colors, and the flowers are of the most perfect shape. The choicest varieties are found in this class, which is divided into sections called *Bizarres*, *Violets*, and *Roses*. The *Bizarres* have yellow ground marked with some other color. *Violets* have white ground with purple and violet marks. *Roses* have white ground marked or variegated with Rose, scarlet, crimson or cherry. The bulbs are used both in garden and pot culture, but cannot be forced.

PARROT TULIPS—A very distinct race and the most picturesque of this genus of beautiful and showy flowers. The flowers are large, marked with a combination of the brightest colors, various shades of yellow, red and green, and instead of being regular in form, the divisions are spread, twisted and wavy as if in wanton grotesqueness to display their grace and beauty.



SINGLE EARLY TULIP
"LA REINE"

SINGLE EARLY TULIPS



DOUBLE TULIP
LEONARDO DA VINCI

SINGLE EARLY TULIPS
PROSERPINE DUCHESSE DE PARMA

Comprising the finest selections for forcing and bedding. Varieties marked E are the earliest to bloom; Ex, following; E2, the latest.

	DOZ.	100
Artus. (E1) bright scarlet	3 for 10	30 1 60
Belle Alliance. (E1) scarlet	05	45 3 00
Brutus. (E1) orange-crimson, gold-margined	3 for 10	35 1 85
Canary Bird. (E) yellow	3 for 10	30 1 75
Chrysolora. (E) yellow	3 for 10	25 1 25
Crimson King. (E1) scarlet	3 for 10	35 2 00
Couleur Cardinal. (E1) bronze scarlet; a flower of great substance; stems long	07	65 4 60
Couleur Ponceau. (E1) crimson and white	2 for 5	25 1 25
Cottage Maid. (E1) rose and white	3 for 10	30 1 50
Duchesse de Parma. (E1) orange-red, yellow-bordered	3 for 10	30 1 50
Dusart. (E1) fine large scarlet	05	45 3 00
Grace Darling. Scarlet; very large flower, with broad petals	20	2 00 9 00
Joost Van Vondel. (E1) red and white. Splendid	3 for 10	30 1 75
Joost van Vondel. (E1) splendid white	06	60 4 00
Keizerskroon. (E1) scarlet, yellow-edged	04	40 2 35
L'Immaculee. (E) white	2 for 05	25 1 25
La Reine. (E1) (Queen Victoria) beautiful rosy white	2 for 05	25 1 25
Mon Tresor. Large, deep yellow	05	45 2 60
Pink Beauty. (E1) splendid carmine, white bottom. One of the most elegant varieties in cultivation	25	2 70
Pottebakker White. (E)	3 for 10	35 1 85
Pottebakker Scarlet. (E)	05	45 2 60
Pottebakker Yellow. (E) occasionally striped red	3 for 10	35 2 00
Pottebakker Pure Yellow	06	60 4 00
President Lincoln. (E2) handsome violet	05	45 2 85
Prince of Austria. (E1) beautiful orange	06	60 3 75
Princess Mariana. (E) white, tinged pink	3 for 10	30 1 35
Proserpine. (E) carmine-rose, large and splendid	06	60 4 00
Purple Crown. (E) purplish crimson	3 for 10	30 1 35
Rembrandt. (E1) scarlet-crimson	05	45 2 85
Rose Luisante. (E2) Pink	07	70 4 85
Rose Grisdelin. (E) soft rose	3 for 10	35 1 85
Rosamundi (E1) white and pink	2 for 05	35 1 25
Standard Royal. (E1) white and red	04	40 2 35
Standard Gold. (E1) yellow and red	06	60 4 00
Thomas Moore. (E1) orange	3 for 10	35 1 75
Vermilion Brilliant. (E) red	07	65 4 60
White Swan. (E2) pure white	04	40 2 35
Yellow Prince. (E) yellow	2 for 05	25 1 25
Vick's Superfine Mixture of nearly equal blooming varieties, 2 for 5 cents, dozen, 25 cts.; one hundred, \$1.20; one thousand, \$9.00		
First Quality Single Mixture. 2 for 5 cents; dozen, 20 cts.; one hundred, \$1.00; one thousand, \$7.50.		

At the 100 rate we do not prepay charges. Add 40 cents per 100 if wanted by mail.

SINGLE DUC VAN THOL TULIPS

The Duc Van Thols are the earliest of the Tulips, and are very desirable for early forcing, coming into bloom throughout December, and especially at Christmas.

		DOZ.	100
Red and Yellow	3 for 10	30	1 50
" " " Maximus		06	60 4 00
Rose		05	45 3 00
Scarlet	3 for 10	30	2 00
Cochineal		06	60 4 00
Crimson	3 for 10	25	1 25
Gold Striped	3 for 10	30	1 50
White Maximus		05	45 2 60
Yellow		05	50 3 35
Orange	3 for 10	30	1 60

Vick Quality in Bulbs
means just the same as Vick
Quality in Seeds—the Best
to be obtained. You make no
mistake when you purchase
"Vick Quality" Goods

Highland Park Bed of Single Early Tulips

This beautiful bed is circular, six feet across, or 18 feet in circumference, requiring a total of 271 bulbs planted four inches apart. The center and first three rows require 37 scarlet "Belle Alliance;" the next three rows 90 "Chrysolora," pure yellow; and the last three rows 144 "L'Immaculee," pure white.

We will furnish the 271 bulbs delivered **\$4.50**
to any express office in the U. S. for

Half Dollar Collection of Forty Choice Assorted Bulbs

For House or Out-of-Door Culture.

A most desirable and favorite collection; will give universal satisfaction.

- 6 Hyacinths—2 Red, 2 White, 2 Blue.
 - 10 Tulips—Single Early, choice mixed.
 - 3 Narcissus.
 - 21 Crocus—All colors mixed.
- 40 choice Bulbs, postpaid, for 50 cents.



BED OF SINGLE EARLY TULIP "PROSERPINE"

DOUBLE TULIPS FOR BEDS

- Arabella.** Carmine-pink; large flowers; extra fine. Each, 5 cents; dozen 45 cents; hundred, \$2.85.
- Blue Flag.** Blue; late. 3 for 10 cents; dozen, 35 cents; hundred, \$1.85.
- Crown of Gold.** Yellow, orange shaded. Each, 7 cents; dozen, 65 cents; hundred, \$4.60.
- Crown of Roses.** Rose; large; early. Each, 9 cents; dozen, 85 cents; hundred, \$6.00.
- Duc van Thol.** Red, yellow-edged; early. 2 for 5 cents; dozen 25 cents; hundred, \$1.25.
- Duke of York.** Red and white; fine; large; early. 3 for 10 cents; dozen, 30 cents; hundred, \$1.50.
- Gloria Solis.** Bronze, orange and crimson; early. 3 for 10 cents; dozen, 35 cents; hundred, \$1.85.
- Imperator Rubrorum.** Red; early. Each, 6 cents; dozen, 60 cents; hundred, \$4.00.
- La Candeur.** White; large; early; largely used for bedding purposes. 3 for 10 cents; dozen, 30 cts.; hundred, \$1.60.
- Le Blason.** Delicate rose and white striped; early; very fine. 3 for 10 35 2 00
- Leonardo da Vinci.** Orange-red, yellow bordered 06 60 4 00
- Marriage de ma Fille.** White and carmine striped; large; late 05 45 2 60
- Murillo.** White, shaded rose; large; early; fine for forcing 05 45 2 85
- Peony Gold.** Yellow and red; late. 3 for 10 30 1 50
- Peony Red.** Scarlet; late 3 for 10 30 1 50
- Purple Crown.** Splendid, dark velvety crimson; early 3 for 10 30 1 50
- Purple White Bordered.** Late. 3 for 10 30 1 35
- Raphael.** Blush white, shaded rose; extra fine 20 2 00 9 00
- Regina Rubrorum.** Red striped with creamy yellow; early 07 65 4 60
- Rex Rubrorum.** Crimson-scarlet; very showy; early 3 for 10 35 2 00
- Rose Blanche.** Pure white; extra large; early 3 for 10 30 1 35
- Rosine.** Rosy white; early 3 for 10 35 2 00
- Rubra Maxima.** Deep red. 05 45 2 60
- Salvator Rosa.** Rose and white; early 09 85 6 00
- Titian.** Brown and yellow; fine 3 for 10 35 1 85
- Tournesol.** Red and yellow; very large and fragrant; extra early 04 40 2 35
- Tournesol.** Yellow, shaded orange; large and showy; extra early 06 60 3 85
- Velvet Gem.** Dark brown 05 45 2 60
- Yellow Rose.** Beautiful golden yellow; large; late 2 for 05 25 1 25
- Superfine Mixture of Early Varieties.** 2 for 5 cents; dozen, 25 cents; hundred, \$1.20; thousand, \$9.00.
- Superfine Mixture of Late Varieties.** 2 for 5 cents; dozen, 25 cents; hundred, \$1.20; thousand, \$9.00.

We do not prepay charges at the 100 rate. Add 40 cents per 100 if ordered by mail.



DOUBLE TULIP
"RAPHAEL"

PARROT TULIPS

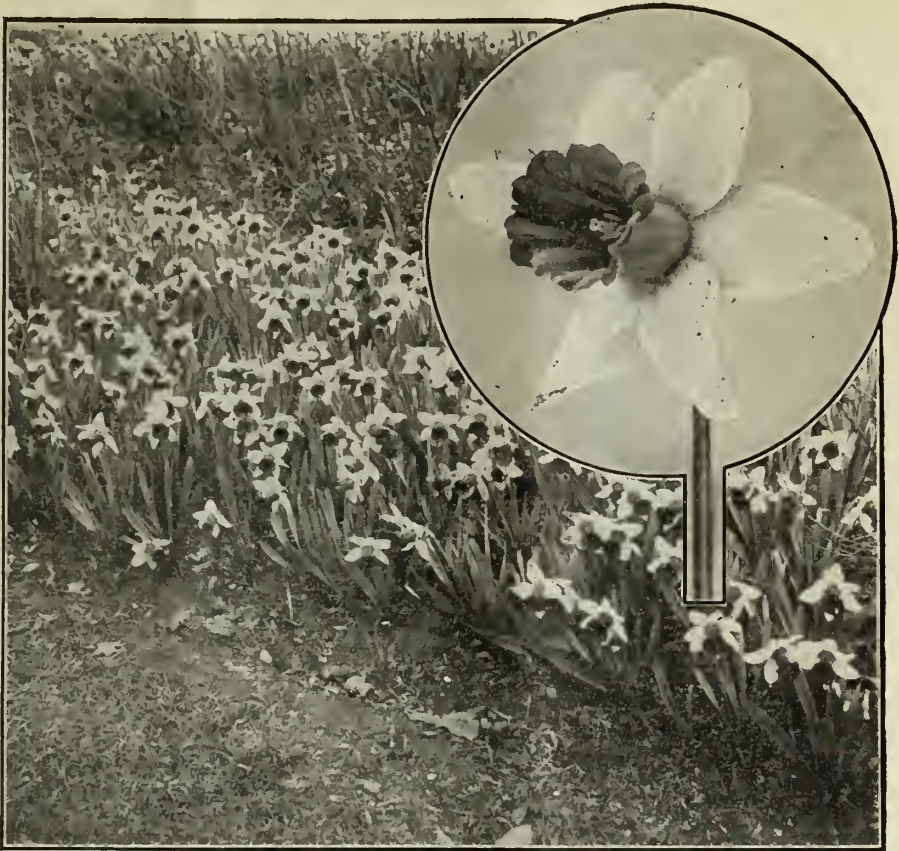
- The most brilliant and showy of all Tulips, and when massed in a bed they make a dazzling show. DOZ. 100
- Admiral de Constantinople.** Red 3 for 10 30 1 75
- Cafe Brun.** Rich brown 3 for 10 30 1 75
- Cramoisi Brilliant.** Scarlet 3 for 10 30 1 75
- Gloriosa.** Yellow and red 3 for 10 30 1 75
- Lutea.** Yellow 3 for 10 30 1 75
- Markgraaf.** Red and yellow 3 for 10 30 1 75
- Perfecta.** Red striped 3 for 10 30 1 75
- Superfine Mixed** 3 for 10 25 1 25

LATE SINGLE TULIPS

- This class is very attractive and the flowers bloom after the early varieties. DOZ. 100
- Bizarres** 2 for 05 25 1 25
- Violets** 3 for 10 30 1 35
- Roses** 3 for 10 30 1 35
- Superfine Mixed** 3 for 10 25 1 35

OTHER LATE-FLOWERING TULIPS

- Gesneriana.** The most superb of all Tulips. The very large and symmetrically-formed flowers are borne on tall, strong stems, and keep in good condition much longer than any other variety. Brilliant crimson-scarlet, with deep blue-black base. Magnificent when massed 3 for 10 35 2 00
- Darwin.** These splendid Tulips are borne on strong stems about two feet high, and embrace many colors which appear in no other class 3 for 10 30 1 60
- Bouton d'Or.** (Golden Beauty) 3 for 10 25 1 25
- Picotee.** (Maiden's Blush) 3 for 10 35 2 00
- Breeders, or "Mother Tulips."** Fine mixed. 3 for 10 30 1 60



NARCISSUS HORSFIELDII IN HIGHLAND PARK (SINGLE FLOWER HALF NATURAL SIZE)

NARCISSUS, OR, DAFFODILS

THE great variety of peculiar and graceful forms which the Narcissus assumes in its numerous varieties is particularly agreeable and fascinating. The well-known Daffodil and the Jonquil belong to this family of plants. With the exception of the Polyanthus varieties the bulbs are hardy in all parts of the country, and should be planted in Autumn in the garden border at the same time and in the same manner as Hyacinths and Tulips. The named varieties of the Single Narcissus in the following list are the most beautiful and highly prized. The double varieties make a great show in the garden in early spring, while the Polyanthus varieties are particularly desirable for window and greenhouse culture, planting three or four in a five or six-inch pot. All species of Narcissus love plenty of moisture. In pot culture they should be freely supplied with water, and when grown among pebbles in bowls of water they are secured from drought.

SINGLE AND TRUMPET NARCISSUS

Horsfieldii (Queen of Daffodils). Perianth white, yellow trumpet; magnificent	DOZ	100
Empress. A great splendid flower of rare beauty. One of the best of the two-colored trumpets. Perianth white and of good substance, trumpet rich yellow. An excellent forcer	06	55 2 70
Bicolor Grandis maximus. Flowers extra large; broad, pure white petals; late; fine for cutting	06	60 3 00
Bicolor Princeps maximus. Primrose perianth, yellow trumpet; one of the best and earliest for forcing	3 for 10	35 2 00
Emperor. Deep yellow, large trumpet	06	50 2 30
Glory of Leiden. Deep yellow	35	3 50

Golden Spur. Rich golden yellow, both trumpet and perianth; early, large, and free blooming	DOZ	100
Henry Irving. Rich yellow, frilled trumpet; a magnificent flower	06	50 2 50
Madame Plemp. New. White and yellow	40	4 00
Mrs. Langtry. One of the best of the Leedsii type. Perianth broad white; cup white, edged apricot. Very fine	3 for 10	35 2 00
Poeticus (Pheasant's Eye). White, scarlet eye; cannot be forced but fine for garden culture	3 for 10	25 1 25
Poeticus ornatus. Pure white, sweet-scented, fine for forcing; about a month earlier than the Pheasant's Eye	2 for 5	25 1 25

**Paper White
Grandiflorus**

Best Narcissus
for growing in
water.

In offering this variety as superior to the Chinese Sacred Lily for growing in water our friends may think we are drawing on our imagination, but it is a fact that Paper White is far more desirable; the flowers are larger, more attractive in color, and intensely fragrant. Pot them in a shallow dish of water, with gravel or small stones at the bottom.

Each 4 cents; dozen 40 cents; hundred \$1.75.



TEN DAYS OLD

NARCISSUS, PAPER WHITE GRANDIFLORUS

TWENTY-SIX DAYS OLD

Single and Trumpet Narcissus, Continued

Poeticus Burbidgei. Large white flowers, cup margined red; bloom a month earlier than the old popular Poeticus. Fine for house or out-of-door culture . . . 3 for 10	25	1	25
Biflorus. White and yellow, 2 flowers 2 for 5	25	1	25
Spurius Coronatus. A beautiful yellow self. Best of the early varieties . . . 3 for 10	35	1	80
Trumpet Major. True golden yellow petals and trumpet, fine for forcing and cutting; standard single yellow Daffodil 3 for 10	35	1	50
Large Trumpet Varieties Mixed 04	35	1	50
Medium Trumpet Varieties Mixed 3 for 10	30	1	25

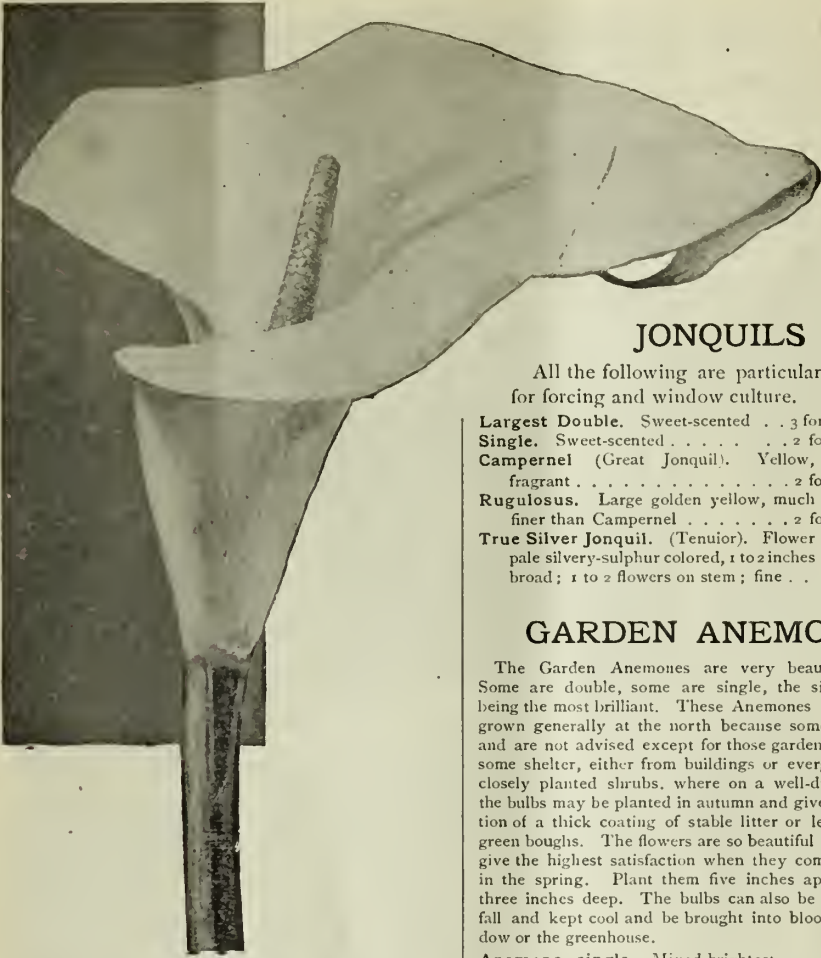
DOUBLE NARCISSUS

Albo pleno odorato. White, sweet-scented; recommended highly for outdoors for cutting; cannot be forced 2 for 5	25	1	25
Incomparable (Butter and Eggs). Yellow and orange; sweet-scented . . . 2 for 5	25	1	25
Orange Phoenix. White and orange 3 for 10	35	1	75

Sulphur Phoenix or Silver Crown 05	50	3	25
Double Von Sion. The true "Double Yellow Daffodil," 1st size 3 for 10	35	1	75
Double Von Sion. Extra selected 04	40	2	25
Double Von Sion, Double Nose. Extra large bulbs, producing two or three flowers 05	50	2	75
Double Mixed. 3 for 10	30	1	25

POLYANTHUS NARCISSUS

Double Roman. White and yellow 04	40	1	50
Gloriosum superbum. White, with deep orange cup; fine 06	60	3	35
Grand Monarque. White, yellow cup, the finest of all white Polyanthus; excellent for growing in water 06	60	3	20
Grand Soleil d'Or. Bright yellow, deep orange cup 06	60	3	20
Her Majesty. Fine white 06	60	3	20
Newton. Yellow, orange cup; very fine 06	60	3	20
Polyanthus Narcissus, Superfine Mixed. Each 5 cents; dozen 50 cents; hundred \$2.00.			



CALLA *Richardia Africana*

The well-known Egyptian Lily, or Lily of the Nile, with large white flowers and broad foliage. An excellent plant for aquariums. In the spring they may be planted in the garden, and left until September, when they may be taken up, potted, and removed to the house or conservatory, and will bloom in winter and spring.

Our Calla roots are grown for us in California, where the Calla is perfectly at home and grows magnificently. First Size, large flowering rhizomes, each 20 cents; per dozen, \$2.00.

Second Size, each 15 cents; dozen, \$1.50.

Third Size, each 10 cents; dozen, \$1.00.

CHINESE SACRED LILY

A variety of *Polyanthus Narcissus* introduced by the Chinese. The flowers are pure silvery white, with golden yellow cups, chaste and graceful in appearance and of exquisite fragrance. A dozen bulbs started at intervals in shallow bowls of water, three or four bulbs in each dish, with just enough small pebbles or stones to prevent them from toppling over, will give a succession of flowers throughout the winter.

Extra large size bulbs, by mail postpaid, each 12 cents; per dozen, \$1.35.

JONQUILS

All the following are particularly desirable for forcing and window culture. doz. 100

Largest Double. Sweet-scented . . . 3 for 10	35	2	50
Single. Sweet-scented 2 for 5	25	1	25
Campernel (Great Jonquil). Yellow, fragrant 2 for 5	20	1	25
Rugulosus. Large golden yellow, much finer than Campernel 2 for 5	25	1	50
True Silver Jonquil. (Tenuior). Flower pale silvery-sulphur colored, 1 to 2 inches broad; 1 to 2 flowers on stem; fine . . .	06	60	3 75

GARDEN ANEMONE

The Garden Anemones are very beautiful flowers. Some are double, some are single, the single varieties being the most brilliant. These Anemones have not been grown generally at the north because somewhat tender, and are not advised except for those gardens which have some shelter, either from buildings or evergreen trees or closely planted shrubs, where on a well-drained border the bulbs may be planted in autumn and given the protection of a thick coating of stable litter or leaves or evergreen boughs. The flowers are so beautiful that they will give the highest satisfaction when they come into bloom in the spring. Plant them five inches apart and cover three inches deep. The bulbs can also be potted in the fall and kept cool and be brought into bloom in the window or the greenhouse.

Anemone, single. Mixed brightest colors 2 for 5	20	\$1	00
Double. Best mixed colors 3 for 10	30	1	75
Single scarlet 2 for 5	25	1	25
Double scarlet 04	40	2	25
Single pure white (The Bride) . . 2 for 5	20	1	00

At prices quoted we prepay postage.

FREESIA

This is a delightful winter-blooming plant for window and conservatory. The bulbs are small, and six or eight can be planted in a five-inch pot. The earlier the bulbs are potted, the better, setting them down so that the soil will cover the tips. They will start both root and top growth without much delay, and can easily be had in bloom by Christmas. Be careful to keep them moist and in a moderate temperature. The flowers, which are white with a blotch of yellow at the throat, and about an inch in length, are produced in a raceme of five to eight, each standing erect. They are deliciously fragrant. The stems cut and placed in water keep well. After the plants have bloomed they can be given less and less water until the leaves have died, when the bulbs can be dried off and laid away until the following autumn.

Freesia refracta alba, selected.	DOZ.	100
Mammoth or monster bulbs	04	40 2 25
Extra large size 3 for 10	30	1 50

CROCUS

The First to Bloom in the Spring

The Crocus and the Snow-drop are the first flowers to appear in our gardens; they come as soon as the frost is out of the ground and while frosty nights still occur, but they are brave and hardy little heralds of the spring. The bulbs should be planted so as to cover quite a space on a flower border, or they may be set about two inches apart in a row as an edging. After flowering, the bulbs may be taken from the ground and kept in a dry place until planting time in the autumn, or may be allowed to remain in the ground; it will make no difference, except that those remaining undisturbed will be likely to flower a week or ten days earlier than those which have been replanted.

A very pretty effect is secured by planting the bulbs in large numbers on the lawn or front grass plat. They can be set in by thrusting

down a narrow spade or trowel and spreading the opening a little, sufficient to place in the bulb, and then crowding it together. In this way they are quickly planted and the sod is not disturbed. In early spring the flowers appear above the grass, and in our northern country it is a surprise to see the faces of these bright bloomers as soon as winter has gone. By the time it is necessary to run the lawn mower over the grass the flowers will have disappeared and no harm will come to them from the mower, but the bulbs will remain to bloom again each succeeding spring.



NAMED CROCUS — Large Bulbs

		DOZ.	100
Albion. Striped	2 for 5	20	1 00
Baron von Brunow. Dark blue	2 for 5	20	1 00
King of the Blues. Purple	2 for 5	20	1 00
King William. Dark	2 for 5	20	1 00
Lord Palmerston. Blue	2 for 5	20	1 00
Margot. Light blue; extra	2 for 5	20	1 00
Mammoth. White	2 for 5	20	1 00
Mont Blanc. Pure white	2 for 5	20	1 00
Non Plus Ultra. Variegated	2 for 5	20	1 00
President Grant. Striped	2 for 5	20	1 00
Queen Victoria. White	2 for 5	20	1 00
Sir Walter Scott. Variegated	2 for 5	20	1 00

CROCUS IN COLORS

	DOZ.	100	1000
Blue and Purple	15	50	\$3 75
White	15	50	3 75
Striped and Variegated	15	50	3 75
All colors mixed	15	50	3 75
Large Yellow	15	70	5 70
Mammoth Yellow. Flowers of enormous size	2 for 5	20	1 20
Cloth of Gold	2 for 5	15	75
Cloth of Silver	2 for 5	15	80

We do not pay postage on 100 lots. If wanted by mail add 20 cents per 100, otherwise we will send by express, not paid.

ALLIUM NEAPOLITANUM

This species is largely raised in Southern France for its handsome white flowers produced in clusters; and is extensively grown by florists. Six or eight bulbs may be planted in a five-inch pot; they will develop in a low or moderate temperature.

Two for 5 cents; dozen 20 cents; \$1.00 per 100, postpaid.

CHIONODOXA

Spring flowering plant, producing Scilla-like flowers; hardy and early. Excellent for winter blooming in the house, and also for cut flowers.

Chionodoxa Lucilliae. Azure blue. Three for 10 cents; per dozen, 25 cents; per hundred, \$1.50, postpaid.

Sardensis. Fine dark blue. Three for 10 cents; per dozen, 30 cents; per hundred, \$1.75, postpaid.

COLCHICUM

THE AUTUMN-FLOWERING CROCUS

The Colchicum, Autumn Crocus, is a curious and interesting flower. The leaves appear in the spring, and the flowers in the autumn. The bulbs are perfectly hardy. Each bulb gives quite a cluster of flowers, generally six or eight, and so persistent is it in its determination to flower that if taken up early in the autumn before the time for flowering, and placed in a pot or basket, it will bloom just as well as if left in the ground.

Colchicum autumnale. Pink. Each, 10 cts.; doz. \$1.00.

James Vick's Sons pay the Postage or Express charges on all goods listed in this Bulb Catalogue, unless otherwise noted.

FRITILLARIA

Very early flowering bulbs, producing large, bell-shaped flowers of various colors. Suitable both for the open garden and for pot culture.

Meleagris (Guinea Hen Flower).

Mixed varieties. 3 for 10 cents; per dozen, 35 cents; per hundred, \$2.00.

Imperialis. See Crown Imperial.

CROWN IMPERIAL

Fritillaria Imperialis.

A well-known, stately, hardy plant, which throws up a tall, vigorous stem, and in early spring produces a cluster of large, drooping, bell-shaped flowers, surmounted by a tuft of glossy green leaves. Bulbs should be planted four or five inches deep, and about a foot apart.

Mixed Varieties. Each 15 cents; per dozen \$1.35.



CROWN IMPERIAL—SINGLE FLOWER NATURAL SIZE.

IXIA

The Rainbow Flower

Few flowers attract more attention by their curious forms and strange colorings, nearly all showing three or more colors. Several may be planted in a small pot. There is a greater difference in the form and color of *Ixias* than in almost any other class of plants. They are easily raised in pots in a coldframe, window, or greenhouse. Half a dozen bulbs may be put in a four-inch or five-inch pot.

Choice bulbs, three for 5 cents; per dozen, 20 cents; per 100, \$1.00, postpaid.

LEUCOJUM

Leucojum vernum or Spring Snowflake resembles a monster Snowdrop; very useful for cutting; also makes a beautiful border or cluster around the edges of shrubbery. Well suited for pot culture. Flowers white, with bright green spots. Three for 10 cents; per dozen, 30 cents; per hundred, \$2.00; postpaid.

ORNITHOGALUM

A beautiful and showy plant. The flower spikes are from eighteen to twenty-four inches high, bearing numerous pearly white flowers with jet-black center, and with a perfume distinctly aromatic. The bloom remains perfect for many weeks. When grown in the garden they make an interesting and pretty sight. The plants are desirable for greenhouse or window decoration, and florists are now growing them largely for their value as cut flowers.

	EACH	DOZ.	100
<i>Ornithogalum Arabicum</i> . . .	05	50	\$3 00

SPARAXIS

These are small bulbs with flowers of many colors, like those of the *Ixia*, and they require the same treatment. They make beautiful winter-blooming plants. Several bulbs can be planted in a small pot, or a box in the window planted with *Ixias* and *Sparaxis* will give a great display of bright-colored, beautiful flowers.

	DOZ.	100
<i>Sparaxis</i> , mixed	2 for 5	20 \$1 00

IRIS, Fleur-de-lis

The Iris or Flower de Luce, the *fleur-de-lis* of the French, is one of the most beautiful of hardy garden plants. There are several distinct species of these plants, natives of different regions, each presenting many garden varieties, the flowers of which are of peculiar and handsome formation, beautifully colored and marked, and equal in beauty to the most showy orchids. The plants are hardy in the open garden, and some kinds are desirable for greenhouse culture.

English. (Anglica). Large and handsome flowers. Each, 5 cts.; per dozen, 40 cts.; per hundred, \$2.50.

Spanish. (Hispanica). Well adapted for pot culture and forcing in the winter. Mixed varieties, three for 5 cents; per dozen, 15 cents; per hundred, 85 cents.

Pavonia (Peacock). Small, beautifully marked flower; desirable for window culture. Three for 10 cents; per dozen, 35 cents; per hundred, \$2.00.

GERMAN IRIS

German Iris, a good old flower, handsome and as many-hued as some of our finest orchids, and perfectly hardy. They bloom in May and June, when there is a scarcity of flowers. Plant three inches deep.

Bacchus. White, edged with lavender.

Celeste. Light blue.

Harlequin. Lavender, lower petals striped purple.

Madcap. Lavender and purple.

Phidias. Bright yellow, lower petals mahogany.

Sappho. Lavender blue, lower petals rosy purple.

Souvenir. Old gold and purple.

Teserita. Pure white, lower petals purple.

Velveteen. Bronze yellow and rich purple.

Each 20 cents; six for \$1.00; nine for \$1.50.

JAPAN IRIS

The flowers of the Japan Iris are of the richest colors, ranging from white to purple, with delicate markings and veining and quite different in form from those of the German Iris, being much flatter and larger. Some of the flowers are eight inches in diameter. They bloom in profusion during June and July, and are perfectly hardy and of easy culture, but do best where they can have abundant moisture at the roots, and for this reason are admirably adapted to culture by the side of streams and on the edges of ponds and lakes, or in any similar place where the soil retains moisture.

Favorite. White, veined with dark purple.

Gold Bound. Tall and showy, with flowers of enormous size, probably the most beautiful of all. Pure snow-white, with large gold-banded center.

Kaleidoscope. Purple and white.

Maiden's Blush. Single. Creamy white, veined light red violet.

Mount Fell. Rich violet blue, suffused white.

Naomi. Double. Intense purple, shading to violet.

Each 25 cents; dozen, \$2.50.



JAPANESE IRIS

OXALIS

An interesting class of small bulbs, desirable for winter-flowering in pots, producing an abundance of bloom. Plant from three to five bulbs in a pot. After flowering, knock them out of the pots, separate and plant in fresh soil, keeping them in a dry place. About August or September they will commence growing again. Then bring them to the light and air, and commence watering. In this way the bulbs will keep sound all summer, and will increase rapidly. The leaves resemble in form the clover leaf. As the leaves are on long slender stalks, and consequently droop, the Oxalis can be readily adapted to hanging baskets and other similar purposes. The following are the best of the winter-flowering varieties, and may be grown either in pots or hanging baskets.

	EACH	DOZ.	100
Oxalis, Bermuda Buttercup. This improved variety produces bright yellow flowers in greater profusion and size than any other of the species	05	45	3 00
Grand Duchesse. Pink	05	45	3 00
Grand Duchesse. Lavender	05	45	3 00
Grand Duchesse. White	05	45	3 00
Bowiei. Bright rose	3	30	2 00
Versicolor. Variegated	3	30	2 00
Mixed varieties	3	30	1 50

At prices quoted we prepay postage.

Vick Quality in Bulbs is the same as in Seeds—The Best that money can buy.

THE LILY OF THE VALLEY

*"No flower amid the garden fairer grows
Than the sweet lily of the lowly vale."*

One of the most charming and greatly admired plants grown. The bulbs or pips can be planted in a bed out doors, or they can be potted four to six in a four-inch pot, which can be left in a cool place for a time, and even if exposed to a sharp frost are not injured, but apparently benefited thereby, and then with plenty of warmth, light and water, they will soon produce beautiful green leaves, and sprays of lovely white and exquisitely fragrant blossoms. One or more pots may be sunk in the garden and left until wanted. It requires from three to five weeks for them to perfect their flowers if kept very warm and given plenty of water. Like those of other bulbs the flowers are larger and very much finer when raised in the house than in the garden.

Vick's Extra Selected. Each, 6 cents; half dozen, 30 cents; dozen, 50 cents; fifty, \$1.60; hundred, \$2.75 prepaid.

RANUNCULUS

The bulbs of the so-called Garden Ranunculus are somewhat tender in northern climates, where they can be recommended only for pot culture. The flowers are both single and double and of a great variety of colors. The bulbs have tooth-like prongs or claws and should be set with the claws downwards. The bulbs can be kept in sand in a low, even temperature through the winter, and can then be planted in the garden early in the spring. At the south they can be planted out in late autumn. In growing the plants in pots they should have a cool, moist atmosphere, such as afforded by a cool greenhouse.

	DOZ.	100
Double French, mixed 2 for 05	20	\$1 00
Double Persian, mixed 2 for 05	20	1 00
Double Turban, mixed 3 for 10	25	1 25

SCILLA

Two of the best ornamental species of this genus of bulbous plants are here offered. The plants bloom before the leaves appear. The flowers, about an inch across, are borne in clusters on stems about four inches in height. Scilla Siberica produces flowers of an intense blue, while those of *S. præcox alba* are pure white. After the flowers are gone the leaves appear and a new growth of bulbs takes place. The bulbs are hardy, quite small, and should be planted in a group in the garden where they may be left. The plants can also be grown in pots, six or eight bulbs in a 4-inch or 5-inch pot, and will do well in a window or cool greenhouse. Do not give them a warm place. After growing in pots the bulbs can be turned out into the garden border.

	EACH	DOZ.	100
Scilla Siberica. Bright intense blue 04	35	\$2 50	
<i>præcox alba</i> . Pure white 04	40	2 70	

At prices quoted we prepay postage.



SNOWDROPS

*"The first pale blossom
Of the unwrhiped year."*

It is almost an even race between the Snowdrop and the Crocus to appear in the spring, the Snowdrop coming a few days first. As the name indicates the flowers are white, and instead of standing upright like the Crocus they are nodding on stems about six inches in height. The bulbs should be planted close like those of the Crocus, and they, too, like the latter, can be planted on the lawn where they will maintain themselves for a number of years. They make very pretty pot plants for the window, starting several bulbs in a pot.

	DOZ.	100
Single Snowdrop 2 for 05	20	\$1 15
Double Snowdrop 3 for 10	30	2 00
Elwesii, Giant Snowdrop 2 for 05	20	1 15

At prices quoted we prepay postage.

TRITELEIA

Triteleia is a South American species. The common name for it is Spring Starflower. Flowers pale blue, two to two and a half inches across, borne singly, very rarely two, on stems from nine to eighteen inches high. A good pot plant, and the bulbs increase rapidly.

	DOZ.	100
Triteleia uniflora 2 for 05	20	\$1 00

At prices quoted we prepay postage.

GARDEN LILIES AUTUMN IS THE BEST TIME FOR PLANTING THE BULBS

THE Lily is a favorite flower everywhere. *Lilium candidum* does best when planted in August or September. This variety is valuable for forcing, and is used extensively for this purpose. The method is to plant the bulbs in six inch pots, barely covering them with soil, then plunge them in the garden in a warm, sheltered place, and let them remain there until the pots are well filled with roots, after which they may be removed to the house or conservatory, where they will flower in eight or ten weeks. After long experience, the varieties named in the following list are offered as forming the best collection of hardy Lilies for garden culture. It not only embraces the most beautiful, but there is not one in the list difficult of culture, or that may be likely to disappoint the planter, if we except the *Auratum*, which sometimes proves a little treacherous; all the others can be easily raised, and most of them will improve if left undisturbed a number of years. In foreign *L. Harrisii* or *L. Japonicum longiflorum*, plant them in six-inch pots half-filled with a rich soil, sink the bulbs, leaving just the tips exposed. After the bulb has thrown its stem above the top of the pot, fill the pot with rich soil composed mostly of well-rotted cow manure, as these bulbs throw out rootlets from the stem of the bulb.

Lilium Philippense. This new and beautiful Lily was recently brought to this country from the Philippine Islands. The plant grows about two feet high, with a delicate grass-like foliage, and is exceedingly graceful in appearance. The flowers are pure white, resembling *Lilium Harrisii*, but longer and more slender, the average length being about nine inches and measuring from six to seven inches in diameter. Each 50 cents, \$5.00 per dozen.

Auratum. The magnificent gold-banded Lily of Japan; freely spotted with crimson red; sweet-scented. Blooms about July 15th. Extra large bulbs. 20 cents each, \$2.00 per dozen.

Canadense. Our native Lily; flowers drooping, delicate scarlet-yellow throat, spotted black. Blooms July 10th. 15 cents each, \$1.25 per dozen.

Candidum. Common white garden lily; hardy, free bloomer, fragrant. 15 cents each, \$1.50 per dozen.

Elegans, Best Red. Light red. 15 cents each, \$1.25 per dozen.

Elegans atrosanguineum. Blood-red. 15 cents each, \$1.50 per doz.

Elegans Incomparable. Deep crimson, slightly spotted with black. 15 cents each; \$1.50 per dozen.

The above three varieties bloom about July 1st.

Elegans Batmanniæ. A beautiful Japanese variety; flowers upright, of clear apricot-yellow; strong and hardy; should have a place in every garden. Blooms about July 15th. 20 2 00

Elegans Wallacei. Flowers rich vermilion-orange, spotted with maroon. Blooms in the autumn. Fine. 20 2 00

Hansoni. A rare early-flowering species of beautiful yellow color, petals very thick, dotted with purple. One of the handsomest varieties. Blooms second week in June. 75 7 50

Harrisii. (Easter Lily.) The flowers are pure white, trumpet-shaped, and are unexcelled in beauty by those of any other species, while the fragrance is simply exquisite. By starting the bulbs at intervals of a few weeks, a succession of bloom may be had for a long time. Many dealers offer small-sized bulbs, but we send out only the extra-large size. 30 3 00

Humboldtii. Orange, spotted claret. Extra fine. Blooms July 15th. 30 3 00

Japonicum longiflorum. White, trumpet-shaped. Blooms about July 20th. 15 1 50



LILIUM PHILIPPENSE

- Leichtlini.** Canary-yellow, spotted red. EACH DOZ. Very rare. Blooms August 15th 40 4 00
- Pardalinum.** The best of the Canadense class. Yellow and red spotted. Blooms about July 10th 20 2 00
- Parryi.** Pure lemon-yellow. Long trumpet shaped. Very fine. 50 5 00
- Speciosum Rubrum.** White and rose, dark crimson spots. 20 2 00
- Speciosum Melpomene.** Crimson, spotted with deep blood-red; each petal distinctly bordered with white. Same habit of growth as rubrum; stems dark and color of flower much deeper. 25 2 50
- Speciosum Album.** White. 25 2 50

The above three bloom about August 15th.

Superbum. Yellow and orange-red; drooping. Three to six feet high, bearing from five to twenty flowers. Blooms July 15th. 15 1 50

Tenuifolium. One of the most beautiful and delicate of the early-flowering varieties. Flowers dazzling vermilion-scarlet, suspended from slender, graceful stems; they are so bright as to attract attention from a great distance. The first to bloom

EACH DOZ.
20 2 00

Tigrinum splendens. Tiger Lily. Blooms about August 1st 15 1 50
Tigrinum fl. pl. Double Tiger Lily. Blooms about August 15th 15 1 50
For \$1.00 at Single Rates purchasers may select to amount of \$1.25.



THE DAY LILIES

The Day Lilies are hardy garden border plants, bearing large Lily-like flowers. The plants can be set in autumn, and may be protected by a light covering of leaves the first winter after setting out.

Funkia alba or White Day Lily. Each 20 cents.

Japonica. Light blue, with narrow foliage. Each 20 cents.

Undulata media picta. Flowers lavender; foliage light green, beautifully variegated with white; one of the most beautiful hardy plants in cultivation, and without an equal for cemetery planting. Each 25 cents.

Hemerocallis flava. Yellow or Lemon Lily. One of the best hardy border plants; flowers clear canary yellow, very fragrant. Each 20 cents.

One bulb each of the preceding 4 sorts
70 cents.

Golden Day Lily. (*Hemerocallis aurantiaca major*). One of the finest perfectly hardy herbaceous plants. The plant is vigorous in habit; the foliage rises to a height of two feet, and is of a deep green. The flower spikes are strong, bearing as many as twelve flowers in succession, which are seven to eight inches across; of a rich orange-yellow, quite distinct. Each 40 cents; two for 70 cents.

SIX CHOICE LILIES FOR \$1.00

The following six varieties of Lilies we offer in a collection for \$1.00, or two collections for \$1.75, express or postage prepaid. *Lilium Auratum*, Golden Day Lily, *Lilium Tenuifolium*, *Lilium Longiflorum*, *Lilium Elegans* Incomparabile, *Lilium Speciosum Rubrum*.



Ornamental and Flowering Plants

WITH few exceptions, the following plants are such as can be easily grown in any ordinary parlor, sitting-room or greenhouse. As it is much more difficult to pack a single plant so that it will carry safely, than a larger number, we trust our customers will order accordingly. For economy and safety in packing it is best to order at least a dollar's worth of plants.

ABUTILON

FLOWERING MAPLE.

Hard-wooded greenhouse shrubs, blooming almost the entire year; well adapted for house culture. Flowers bell-shaped and drooping. Plants 15 cents each.

Abutilon Eclipse. A trailing variety, beautifully marked deep green and yellow; flowers bright yellow, with crimson throat.

La' Africain. Bright crimson, very free, dwarf.

Souvenir de Bonn. Foliage large, of a deep green color; each leaf edged with a broad white margin; flowers pink, striped with crimson.

Snowstorm. Pure white.

ACHANIA

Achania Malvaviscus. One of the most satisfactory house plants grown, with scarlet flowers; blooms summer and winter; not subject to insects of any kind. Each 15 cents.

AMARYLLIS

The Amaryllis is very desirable for growing in pots, producing showy flowers. The bulbs should be potted in a rich sandy loam, with good drainage. They require abundant moisture when growing, but at their season of rest water should be given sparingly.

Amaryllis Johnsoni. Flowers crimson, five inches in diameter, each petal striped with white. Flower stalk two feet high, with clusters of two to five blooms. Each, 50 cents.

ARAUCARIA EXCELSA

Norfolk Island Pine. One of the best tender evergreens for house culture. Very handsome and decorative. \$1.25 each.

ANTHERICUM

Anthericum vittatum variegatum. An elegant house plant, with dark green leaves bordered with broad stripes of pure white. It throws up long spikes of small, star-shaped flowers. Fine for hanging baskets. Each 20 cents.

AUCUBA JAPONICA VARIEGATA

A most useful plant for decorative purposes for the house in winter. Foliage dark green, freely spotted with bright yellow. Each 20 cents. Extra strong plants 50 cents.

We pay the postage or express charges on all goods listed in this Catalogue, unless otherwise noted.



ASPARAGUS SPRENGERI

ASPARAGUS SPRENGERI

One of the most rapid growing plants, making in a very short time great masses of fine, feathery, drooping foliage, exceedingly graceful and beautiful. The stems grow several feet in length, and are valuable for use in cut-flower work. As a house plant it has no superior, as it withstands the indoor temperature well. Each 20 cts.; two for 30 cts.

AZALEA

The diversity of color and free-blooming qualities of the different varieties of Azalea make them exceedingly popular. After blooming in the house, place the plants in a shady spot out of doors during summer, and remove to the house in fall for winter blooming. Color from pure white to dark crimson. Price, 10-inch heads, each \$1.00; 12-inch heads, each \$1.25; 14-inch heads, each \$1.50; 16-inch heads, each \$2.00.

BABY PRIMROSE

Primula Forbesi. Needs but little care. It forms a dense rosette of fleshy leaves, from which spring the flower stems about twelve inches tall; delicate rosy-lilac flowers produced in great abundance. Each 20 cents; two for 30 cents.

CAREX JAPONICA VARIEGATA

A Japanese grass, very useful and ornamental for the house. Seems to enjoy the atmosphere of living-rooms. Each 25 cents; two for 45 cents.



FLOWERING BEGONIA

FLOWERING BEGONIAS

This class of beautiful plants is deservedly popular. The beauty of foliage, combined with graceful flowers and free-blooming qualities, makes the plants highly desirable. As pot plants for winter decoration they have few equals. Each, 20 cents; per dozen, \$1.50, except where noted.

Alba picta. Leaves narrow, green, and nicely spotted with white; flowers white, in clusters.

Foliosa. A handsome plant; the foliage is small and delicate, and contrasts well with its white blossoms.

Hybrida Multiflora. Very free blooming, with beautiful pink flowers.

McBethii. Flowers pure white; foliage finely cut.

Sandersoni. Scarlet; fine winter bloomer.

REX VARIETIES

The Rex varieties of Begonia are very effective as pot plants. Care should be taken to keep the foliage free from dust. Occasionally the plants may be showered, but should not be exposed to the sun until the leaves are perfectly dry. Each 20 cents; \$2.00 per dozen.

Countess Louise Erdody. The wonderful Cork-screw Begonia.

Edouard Andre. Silvery green, with narrow green border.

Crandis. Bronze and silver.

Ionia, Mich., Jan. 25, '06.

GENILEMEN:

If you will send me a catalogue, I will buy something of you.

I have been rambling around for two or three years and wish to return to the old reliable.

J. C. TAYLOR,
383 Harter Street,
Ionia, Mich.

CYCLAMEN PERSICUM GIGANTEUM

The Cyclamen is particularly adapted for window culture, as it blooms abundantly and for a long time in the winter and spring. The flowers are borne on long stems above the foliage, and are very showy. Strong bulbs, each 30 cents.

CALLA

Little Gem. A dwarf variety of the old Calla, eight inches high, free bloomer. Each, 15 cents; two for 25 cents.

CYPERUS, Umbrella Plant

Alternifolius. A beautiful plant, easily grown. It makes a very showy plant for pot culture, is one of the best for ferneries, while for the aquarium it is without an equal. May be grown in soil kept constantly wet, or in a dish or vase of water. Each 15 cents.

CARNATIONS

The Carnation is both beautiful and fragrant, and gives plenty of flowers for a long time. The ever-blooming varieties are admirable for winter flowers in the house, and are the main dependence of the

florist for the preparation of floral ornaments.

Strong field-grown plants, 30 cents each; two for 50 cents. This size furnished from September 15th to November 1st. Young plants, just right for winter blooming, 20 cents each; six for \$1.00.

American Flag. The flowers are regularly striped with scarlet and pure white, with foliage of metallic blue.

Boston Market. Pure white.

Enchantress. Delicate shell pink.

G. H. Crane. Scarlet.

Harlowarden. Bright crimson.

Mrs. Francis Joost. Light pink.

Peru. Pure white.

Prosperity. White, overlaid with pink.

Red Jacket. Brilliant scarlet.

The Queen. Creamy white.



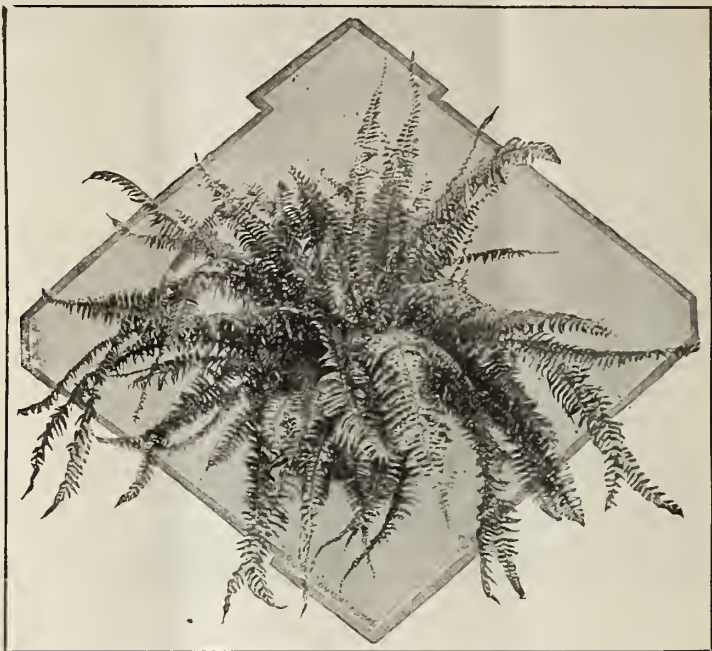
LACE FERN

Asparagus plumosus nanus. Beautiful on account of its light feathery growth, which very much resembles lace. The graceful dark green foliage surpasses the Maiden-Hair Fern in delicacy of texture. Splendid as a pot plant and for decorative purposes. Each 20 cents; two for 30 cents.

RUBBER PLANT

Ficus elastica.

One of the best plants grown for table or house decoration. It succeeds well with ordinary treatment. The glossy green leaves seem especially formed to resist the dust and gas to which plants in dwelling-houses are exposed. Strong plants, 50c, 75c, and \$1.00 each.



THE BOSTON DROOPING FERN

Decorative Ferns

Ferns cannot be dispensed with in elaborate decorations for the parlor. A single plant of the Sword Fern is as useful in producing a graceful effect as any plant we know of. In planting a fernery do not crowd them, but give room for the development of the fronds; their growth is rapid, and many varieties soon double their original size. Be your own florist and fill your fern dishes at home. Five of the best and hardiest varieties are sufficient to fill a fern dish eight inches in diameter. Each, 15 cts.; dozen, \$1.50.

Adiantum cuneatum. The popular Maiden-Hair Fern.
Aspidium Tsussimense. A pretty species, with dark green foliage.
Cyrtomium Falcatum. Large green glossy leaves.
Polystichum setosum. Foliage dark green.
Pteris argyrea. Large, bold foliage, with broad band of white through center of each frond.
Pteris Cretica albo-lineata. A pretty and useful variegated variety; leaves green and white.
Pteris Serrulata. Glossy deep green foliage.
Pteris Wimsetti. Fine for fern pans and house culture; finely crested.

MOSS FERN

Selaginella Emiliana. Although this is commonly called a Moss Fern it belongs to the Lycopodium family. It is a handsome plant, of upright growth, graceful and pretty. Useful for fernery. Each 15 cts.

BOSTON DROOPING FERN

One of the most satisfactory of all decorative plants for house-culture. The handsome green fronds attain a length of four to five feet, and droop gracefully over on every side. Each, 20 cents; large plants, 75 cents.

**The New Dwarf Boston Fern
*Nephrolepis Scotti***

A very dwarf and compact form of the Boston Fern. The fronds are short and narrow, of a graceful recurring form. Plants of small size make nice specimens in a short time. For house culture we recommend it as a plant that will please all. Strong young plants, each 20 cts. Large plants, 75 cts. each.

**New Ostrich Feather Fern,
*Nephrolepis Barrowsii***

This beautiful fern may be described as a dwarf form of *Nephrolepis Piersoni*. The leaves are wide and the decided feathery appearance of the plant is very striking. A wonderful variety and should be in every collection. Each 20 cents; large plants, 75 cents.

One nice plant each of *Boston, Barrowsii* and *Scotti Ferns* for 50 cents.

FUCHSIAS

Each, 15 cents; dozen, \$1 50.

SINGLE

Mary. A profuse bloomer; the drooping flowers, over two inches long, are a brilliant crimson-scarlet. Altogether it is a very unique plant, and a fine addition to the window-garden or conservatory.

Black Prince. Corolla reddish rose, sepals carmine.

Bouquet. Bushy plant, producing a prodigious number of good-sized flowers of beautiful form.

DOUBLE

Avalanche. Corolla violet, sepals crimson.

Gigantea. Tube and sepals carmine; corolla a shade of light magenta. Large and fine.

Jupiter. Corolla purple, sepals scarlet.

THE BEST DOUBLE AND SINGLE **GERANIUMS** FOR HOUSE CULTURE

Price of all Geraniums each 15 cents; three for 40 cents; per dozen, \$1.50; except as noted.

SINGLE VARIETIES

Gen. Galliene. Intense crimson.
General Grant. Bright scarlet.
Margurite de Layre. White.
Queen of the Whites Improved.
 Pure white.

DOUBLE VARIETIES

Bruant. Vermilion scarlet.
Centaure. A fine double pink.
Countess de Harcourt. Pure snow-white.
Effective. Bright scarlet.
Madame Buchner. Pure white.
Madame Jaulin. Delicate pink, bordered white.
S. A. Nutt. Brilliant deep blood-red, with maroon shading.
Toronto. Bright salmon.

SWEET-SCENTED

Dr. Livingston. Leaves finely divided, very fragrant.
Rose. The most desirable of the scented varieties.

IVY-LEAF

Thick, glossy, Ivy-shaped leaves; plants drooping in habit.

Jeanne d'Arc. White, suffused with lavender.

Leopard. Lilac pink, blotched with crimson.

Souvenir de Charles Turner. Deep pink, feathered maroon in upper petals.

GREVILLEA ROBUSTA, The Silk Oak

A beautiful plant for decorative purposes; quick of growth and of easy culture. The leaves are a light bronze color, the tips being covered with a soft down resembling raw silk. For the house it is unsurpassed, as it needs little attention. Each, 20 cents; two for 30 cents.



PONDEROSA LEMON



GERANIUM BRUANT

LARGE-FRUITED LEMON

PONDEROSA

Nothing that has ever been brought to our notice in the plant line has caused half the commotion that this wonderful Lemon has. It is a true everbearing variety. On a plant six feet high no less than eighty-nine of these ponderous lemons were growing at one time. It was a beautiful sight. The tree was blooming, and at the same time had fruit in all stages of development, from the size of a pea up to the ripe fruit. Fruit weighing over four pounds has been taken from this tree. The lemons have very thin rind for such large fruit. It is the juiciest of all lemons, makes delicious lemonade, and for culinary purposes cannot be excelled. Ponderosa Lemon is sure to become popular when it is known. It fruits when quite small, and makes a lovely house plant. Everybody can now grow their own lemons. Thrifty young plants, each 25 cents; two for 40 cents.

OTAHEITE ORANGE

A dwarf orange, which grows, blooms, and fruits freely in pots, when only a foot or two high. Fruit about one-half the size of ordinary oranges. The blossoms are produced in great abundance, delicate and beautiful in color, and of a delicious perfume. Strong plants, each 20 cents; extra strong plants, each 35 cents.

I have been telling about your seeds and bulbs, and my fine success with the latter. The Paper White Narcissi, and the fine single Hyacinths, attracted wide attention in my church and the public school in the winter; also in the garden in the spring.

Very truly yours,
 W. H. SHIPMAN,
 Pastor M. E. Church,
 Guthrie Center, Iowa.



PALMS

Palms will do well at a window where there is little or no direct sunshine. A regular, but not excessive, supply of water and a fair light are all the plants demand during the cool season. The soil should be a substantial fibery loam. A daily syringing of the leaves is an advantage, but in winter once a week is sufficient. If kept in a living-room with dry furnace heat, daily syringing or spraying the leaves is advisable. We here offer plants of the handsomest and most reliable species. First size, eighteen to twenty inches high. Second size, twelve inches high. Third size, strong plants from 3-inch pots.

Sent by Mail or Express at these Prices.

Kentia Belmoreana. Graceful arching leaves, with long, terete, shining, yellowish-brown petioles; divisions of the leaves twenty to thirty in number, strap-shaped, and deep green in color. This Palm will stand a great deal of ill usage and maintain a good appearance. First size \$1.25; second size 85 cents; third size 35 cents.

Kentia Forsteriana. The beautiful "Thatch Palm." Similar to *K. Belmoreana*, but the petioles are a darker green and the leaf divisions broader. A handsome Palm for table decoration. First size \$1.25; second size 85 cents; third size 25 cents.

Latania Borbonica. Fan-shaped leaves, split into divisions at the apex. A strong, vigorous plant, and makes a fine appearance in the window or in contrast with other plants. First size \$1.25; second size 50 cents; third size 25 cents.

PRIMULA

Obconica Grandiflora

Perpetual-blooming, bearing large trusses of flowers on long stems well above the foliage; color pale lilac, shading to white. Each 15 cents.

CHINESE PRIMROSE

Few house-plants afford greater satisfaction. Requires a cool north window. Care should be taken that no water falls on the buds, as it causes them to rot. In summer they can be turned out into a shady border.

Single White, or Single Pink. Each 20 cents.

SMILAX

A very graceful climbing plant, with dense green foliage. Very fine for house culture. Each, 15 cents; two for 25 cents.

THE PLANTS WE OFFER ARE
STRONG, HEALTHY, AND FREE
FROM INSECTS AND SCALE



THIRD SIZE

Strong plants from 3-inch pots.

SECOND SIZE

12 inches high.

FIRST SIZE

18 to 20 inches high.

ROSES

THE autumn season, after the first of October, is especially favorable for transplanting the hardy roses. The plants should be dormant; that is, the growth should be finished and the plants have dropped their leaves, or at least the leaves should have been removed from the hard and ripened wood. In this condition there can be no drooping of the plants, and all wounds tend to callous and heal over quickly, and possibly even to make some new roots before cold weather sets in, and the plants are ready to start off into new growth at the earliest opportunity in the spring. In setting the plants remove with a sharp knife any portions of injured roots, leaving a smooth cut surface. Be sure and plant in deep-spaded, mellow, and well-enriched soil, where no water will lie. Early in the spring the tops should be cut back sharply, leaving only some six or eight inches of stem. After planting draw some soil up into a mound around each plant and then cover the ground with a good thickness of stable litter, leaves or evergreen boughs if they can be had.

HYBRID PERPETUAL ROSES

The Hybrid Perpetual class is entirely hardy. The flowers are of large size, and of the most beautiful colors. Through their blooming season they give us a show of brilliant colors unequaled by any other plants. The following are only a few of the Hybrid Perpetual Roses we cultivate, but they form a good collection. Those who leave the selection to us shall have our best efforts to serve them.

TWO-YEAR PLANTS.—The varieties in the following list can be supplied in EXTRA STRONG two-year plants, each 40 cents; \$4.00 per dozen, except where noted.

Anna de Diesbach. Beautiful shade of carmine; an extra fine variety.

Caroline Marniesse. Pure (or slightly creamy) white; double; sweetly tea-scented. A perpetual bloomer.

Clio. Flowers large, of fine globular form; flesh color shaded in center with rosy pink. Vigorous grower and fine foliage. Each, 50 cents.

Coquette des Alpes. White, slightly shaded with carmine; a perpetual bloomer.

Coquette des Blancches. Pure white, sometimes delicately tinged with pink.

Francois Levet. Large flower of fine form, on straight stiff stems; bright clear rose color; a splendid variety.

General Jacqueminot. Rich, crimson-scarlet, very bright and velvety.

John Keynes. Dark velvety crimson; large, fine form.

La France. Silvery rose, changing to pink; beautiful both in flower and bud. A constant bloomer.

Madame Plantier. Summer bloomer; pure white.

La Reine. A beautiful, clear, bright rose; full form; very fragrant.

Margaret Dickson. Best white Hybrid-Perpetual; has the fragrance of the finest Tea Roses.

Magna Charta. Color a beautiful bright pink suffused with carmine.

Mrs. John Laing. Delicate pink; large; fine form; very fragrant.

Pæonia. Bright clear red; very sweet; one of the finest.

Paul Neyron. Flowers very large, in fact the largest of all Roses; deep rose color; full, fragrant, and a free bloomer.

Prince Camille de Rohan. Rich, dark, velvety crimson, shading to maroon; very double and sweet.

Ulrich Bruner. Brilliant cherry-red.

Vick's Caprice. Ground color soft satiny pink, distinctly striped and dashed with white and carmine; beautiful in bud.

Victor Verdier. Bright rose, crimson center.

NEW HARDY YELLOW ROSE

SOLEIL D'OR (Golden Sun)

This magnificent variety is perfectly hardy, robust and vigorous, making a growth of about three feet in height. The buds are conical in shape, and of a lovely hue. The flowers are three and a half inches in diameter, well incurved, and superb in color, varying from gold and orange-yellow to reddish-gold, shaded with Nasturtium-red. The plant is perpetual-flowering. Strong two-year plants, each 50 cents.

MOSS ROSES

Moss Roses are very popular and much admired for their buds, which are covered with a moss-like texture.

Two-year-plants, each 40 cents; per dozen \$4.00.

Rose, Comtesse de Murinais. Pale flesh, changing to white.

Cumberland Belle. Climbing Moss Rose. Flowers pink.

Henry Martin. Dark red.

Madame de Rochelambert. Bright pink.

Princess Adelaide. Pink.

PERSIAN YELLOW

The Rose of our mothers' gardens, and one that should be in every garden to-day. In the craze for new varieties many of the fine old sorts are neglected for those of more recent introduction, and in many instances they are inferior to the old standard varieties. Flowers nearly double, borne in immense clusters. Color a deep golden yellow. The plants are a perfect mass of flowers in June. Strong, 2-year plants, each, 50 cents.

Splendid New Climbing Rose

DOROTHY PERKINS

A hybrid of Rosa Wichuraiana and Mme. Gabriel Luizet. In its foliage, growth, and habit of blooming, it is remarkably like Crimson Rambler, but the flowers are more double and of a beautiful shell-pink color, and hold a long time without fading. The flowers are also very sweetly scented, a characteristic not possessed by most other Roses of the Rambler family. Two-year plants, each, 40 cents; per dozen, \$4.00.

VICK'S ROSE STOCKS are all first quality, and if not otherwise specified, are extra strong two-year plants. We prepay express on Roses at prices quoted.

THE RAMBLER, ROSES

The Ramblers are so well known that it is unnecessary to devote space to a long description of these wonderfully beautiful and useful hardy climbers. They are suitable for training on walls, verandas, trellises, arbors, and pillars, and as specimen pot plants for winter forcing. Flowers are well-formed and though small are produced in so great profusion as to present an immense mass of bloom. The Crimson is the best color and most satisfactory. When in bloom the plants are literally covered with thousands of brilliant crimson flowers.

Crimson Rambler.

Yellow Rambler.

White Rambler.

Pink Rambler.

Strong one-year plants, each 25 cents; set of four 75 cents. Two-year plants, 40 cents; set of four for \$1.50.

BABY RAMBLER ROSE

Madame Norbert Levavasseur

This beautiful novelty produces clusters of flowers as large as the old Crimson Rambler. The color is a charming brilliant red, and it blooms with great profusion. This rose blooms all summer, and is bound to be the most popular bedding Rose ever sent out. As a pot Rose it has no equal, as it is a continuous bloomer.

Strong young pot plants, 20 cents each; per dozen \$2.00. Strong one-year old field-grown plants, 40 cents each; per dozen, \$4.00.

PHILADELPHIA RAMBLER

This Rose is a cross between the popular Crimson Rambler and the fiery crimson Hybrid Perpetual Victor Hugo, and is identical with the Crimson Rambler except that the color is brighter crimson, and never fades; is a valuable acquisition to the list of climbing roses. Two-year plants, each 40 cents; per dozen, \$4.00.

It may be well to give the caution that Climbing Roses do not require the close annual pruning that the Hybrid Perpetuals need, nor will they submit to it and produce flowers. The long shoots or canes of the climbers bear short side branches on which the flowers are borne, and the plants are capable of bearing great numbers of flowers annually; these side growths are therefore to be encouraged. Cut out all old canes and cut back the side shoots for renewal.



ROSE, BABY RAMBLER.

CLIMBING ROSES

Are perfectly hardy; bloom early in summer, and when in a rich soil soon cover any arbor or porch. Two-year plants, each 35 cents; two for 60 cents.

Baltimore Belle. Pale blush, nearly white.

Queen of the Prairie. Rosy red; fine.

MONTHLY ROSES

The ever-blooming class comprises the Teas, Chinas, Noisettes, and Bourbons. These have free-blooming qualities, exquisite fragrance, and delicate colors. They are well adapted to house-culture. The varieties offered are among the best in cultivation; they have been carefully grown in pots during the summer, and are in excellent condition for winter flowering. Shower the plants frequently, or sponge the leaves to keep them clear of the red spider, their worst enemy in the house. Fine strong plants, each 15 cents; \$1.50 per dozen. Italic letters indicate classes; *t*, Tea; *c*, China.

Bon Silene. Carmine, tinted with salmon. *t*.

Bridesmaid. Clear delicate pink. *t*.

Catharine Mermet. Flesh color; buds finely formed. *t*.

Charles Rovolli. Carmine, changing to silver-rose. *t*.

Coquette de Lyon. Canary-yellow. *t*.

Duchess de Brabant. Bright rose.

Gen. de Tartas. Carmine, shaded purple. *t*.

Jules Finger. Bright rosy scarlet and intense crimson. *t*.

Marie Guillot. White, tinged with pale yellow. *t*.

Maman Cochet. Deep rosy pink, inner side of petals silvery rose. *t*.

Marechal Niel. Yellow, tea-scented. *t*.

Princess de Sagan. The richest crimson of any Rose in our collection. *t*.

Perle des Jardins. Rich shade of yellow; perfect form. *t*

Queen's Scarlet. Crimson-scarlet; beautiful buds. *c*

White Maman Cochet. Flower extremely large, round and full; a pure white. *t*.

Hardy Plants for Fall Planting



AQUILEGIA

Chrysantha. The beautiful golden yellow Columbine. Each 20 cents

Cœrulea. This is the true form of the Rocky Mountain Columbine. Flowers blue. Each 20 cents.

Skinneri. Scarlet and yellow. Each 20 cents; dozen, \$2.00.

CAMPANULA

Persicifolia. Tall Spikes of flowers. Colors blue and white. Each 20 cents; dozen, \$2.00.

Pyramidalis. (The Chimney Bellflower). Showy, tall spikes of flowers. Colors blue and white. Each 20 cents; dozen, \$2.00.

DIGITALIS. (Foxglove). A highly ornamental plant of stately growth. Each 20 cents.

VICK'S DOUBLE ANEMONE WHIRLWIND

Planted outdoors this fall it will bloom the following season.

The double variety "Whirlwind" has all the free-blooming and other good qualities of the single white, and the additional ones of greater hardiness of plants and more lasting blooms. Each 20 cents; dozen, \$2.00.

Queen Charlotte. An early-flowering pink Anemone. Of vigorous growth. Begins to flower in August, continues to bloom until November, and becomes more attractive each day. Flowers semi-double, broad, perfectly formed, and of a pleasing shade of silvery pink. Each 20 cents; \$2.00 per dozen.

ALYSSUM

Saxatile Compactum. One of the best plants for the rockery or border. Flowers bright yellow. Each 20 cents; dozen, \$2.00.

ACHILLEA

The Pearl. The blooms are of purest white, and so large that they resemble a Pompon Chrysanthemum. Hardy, and will thrive in almost any situation. Very desirable for the garden or cemetery; blooms nearly the whole season. Each 20 cents; three for 50 cents.

Millifolium roseum. Foliage finely cut; flowers pink. A continuous bloomer. Each 20 cents; two for 30 cents.

ARABIS ALPINA

A very early spring-flowering plant. Flowers pure white. Each 20 cents.

HARDY ASTERS (MICHAELMAS DAISIES)

Lady Trevylan. White, early.
Mrs. V. W. Raynor. Reddish violet.
Pyramidalis. Lavender blue.
White Queen. White, late.

Each 20 cents; dozen, \$2.00.

HARDY POMPON CHRYSANTHEMUMS

These are the very best of all Chrysanthemums for planting out of doors, and also very desirable for growing as pot plants, being dwarf, compact growers, and free bloomers. They are perfectly hardy, blooming before severe frosts will hurt the flowers.

Ada. Deep, clear yellow.

Crimson Ball. Beautiful deep crimson.

Delicatissima. Center deep wine color, outer petals delicate pink.

Drin Drin. Smallest; bright orange.

Druid Hill. Light mahogany-crimson.

Edna. White, with pink shadings.

Fairy Queen. Pink and yellow.

Gold Standard. Deep golden-yellow.

Goldfinch. Golden-yellow.

Maid of Honor. Blush White.

Prince of Wales. White.

St. Illoria. Silvery-pink.

Each 15 cents; dozen, \$1.50.



SHASTA DAISY

One inch less than full diameter

CLEMATIS DAVIDIANA

A vigorous hardy plant, two to four feet high, with handsome foliage. The flowers are bell-shaped, deep lavender or violet in color, very fragrant, and are produced in clusters in great profusion. One of the most desirable of hardy herbaceous perennials. Strong plants, each 25 cents; two for 40 cents.

COREOPSIS LANCEOLATA

Flowers large, bright golden yellow, and produced in the greatest profusion the entire summer; invaluable for cutting. Each 20 cents.

DICENTRA

Dicentra spectabilis, or Bleeding Heart. Bears heart-shaped, deep pink flowers in a graceful drooping raceme a foot or more in length. Each 30 cents.

EULALIA

Eulalia Japonica variegata. This variety, except that the variegation of the leaf is lengthwise, is very similar in style and habit of growth to *E. Japonica zebrina*, and it forms so beautiful and striking a contrast to that variety as to make them desirable companion plants.

Japonica zebrina. This plant is unlike most variegated plants, as its stripe or marking is across the leaf instead of lengthwise. In fall it bears large tassel-like plumes.

Gracillima univittata. The most beautiful of all the *Eulalias*. Foliage narrow, dark green, with a silvery white midrib.

Each 20 cents; one plant of each of above three for 50 cents.

BOLTONIA ASTEROIDES. Attains a height of four feet; flowers like single Asters; blooms during summer and autumn. Produces hundreds of flowers at one time. Each 20 cents; dozen, \$2.00.

EUPHORBIA COROLLATA. Blossoms from July to October. Flowers white, small and star-shaped. Useful for bouquets. Each 15 cents; two for 25 cents.

FORGET ME NOT (*Myosotis palustris*). A variety that is always in flower. Each, 15 cents; dozen \$1.50.

SHASTA DAISY

The Shasta Daisy is one of the most marvelous productions in the flower line that has ever been brought to the notice of floriculturists. It is the first of a new type, which has been obtained by hybridization and rigid selection through a series of years. Its first qualification is extreme hardiness. Second, it is perennial, blooming better and more abundantly each season. Third, it can be multiplied rapidly by simple division, and it is not particular as to soil. Fourth, it blooms for several months. Fifth, the flowers are extremely large and graceful, averaging about four inches in diameter, with petals of the purest glistening whiteness, and are borne on single, long, stiff, wiry stems. Sixth, the blooms when cut remain perfectly fresh and in good condition for two weeks or more. No other flower can compare with it in usefulness. Each 20 cents.

DELPHINIUM

Delphiniums or Larkspurs are valuable plants.

Formosum. A most brilliant deep blue, the finest blue flower known among our hardy plants. Each 20 cents.

Bee Larkspur. Interesting for the manner in which the petals are folded up in the center of each flower, so as to resemble a bee. Flowers of lighter shade than *Delphinium formosum*. Each 20 cents.

Chinese. A pretty variety, in varying colors from blue to white. Each 20 cents.

HELIANTHUS**HARDY SUNFLOWERS**

These varieties of *Helianthus* are perfectly hardy in this locality, but in colder regions a protection of coarse litter will be required. The plants attain a height of about four feet, and in their blooming season, in August and September, they are nearly covered with bright golden-yellow double flowers, about the size of a Dahlia; they are very desirable for cutting. Each 15 cents; dozen, \$1.50.

Helianthus lataefrons. Plant of distinct habit, forming a pyramid of lovely flowers and foliage. Flowers golden-yellow, single.

Maximiliani. Grows from five to seven feet high; flowers produced in long graceful sprays of golden-yellow.

Multiflorus plenus. Yellow flowers, perfectly formed. **Soliel d'Or**. The Golden Quilled Sunflower; similar to the above variety, except that the petals are quilled like some of our finest Dahlias.

HELIOPSIS PITCHERIANA

A hardy perennial, three feet high, broad and bushy, and a perpetual bloomer. Flowers deep golden yellow, two inches across. Very fine for cutting. Each 15 cents.

ERIANTHUS RAVENNÆ. Resembles the Pampas Grass; producing beautiful plumes from ten to twelve inches in length on stalks from five to seven feet high. Each 20 cents.

EUPATORIUM AGERATOIDES. A useful border plant, producing large heads of handsome white flowers in August and September. Each, 20 cents; dozen, \$2.00.

GAILLARDIA GRANDIFLORA. Among the most attractive and effective of our hardy perennial plants; one mass of bloom from June till autumn. Each 20 cts.

SALVIA PRATENSIS. Showy spikes of deep blue flowers. Each, 20 cents; dozen, \$2.00.

HIBISCUS

Each 20 cents; two for 35 cents.

Hibiscus, Crimson Eye. A robust grower with dark red stems and handsome foliage. The flowers are immense in size, often measuring twenty inches in circumference. The color is pure white, with a velvety crimson center in each flower.

Large-Flowering. Perfectly hardy in any place, and is one of the most beautiful hardy flowering plants we have. The color is a deep pink.

Militaris. Delicate flesh pink flowers, tinged with deeper color toward the center.

HOLLYHOCK—Double

We have excellent healthy plants, grown from seed, that will flower the first summer, and usually for three or four summers after. Give the plants a light covering of coarse litter for winter protection. The colors are nicely assorted, so that almost every color from white to purple may be expected. Each 20 cents; the set of six colors for \$1.00.

IBERIS SEMPERVIRENS

Evergreen Candytuft. Produces innumerable flat heads of pure white flowers during April and May. Each 15 cents, per dozen, \$1.50.

LYCHNIS

Lychnis Chalcedonica. Produces large heads of brilliant scarlet flowers. A gem for cut flowers. Each 15 cents; per dozen, \$1.50.

LATHYRUS GRANDIFLORUS**PERENNIAL PEA**

Clusters of red flowers from June to September. Each, 20 cents; dozen, \$2.00.

LOBELIA CARDINALIS

Cardinal flower. Flowers rich fiery cardinal color. Each, 20 cents; dozen, \$2.00.

PAPAYER—Poppy

Papaver orientale. The well-known Oriental Poppy. Flowers scarlet. Each 20 cents.

Nudicaule. The Iceland Poppy. Always in bloom; flowers white, orange, and yellow. Each 20 cents.

PHLOX SUBULATA

Phlox, The Bride. Pure white, with pink eye. Each 15 cents; per dozen, \$1.50.

GIANT HARDY PRIMROSE**Primula veris superba**

This beautiful new Primula originated in a bed of seedling Polyanthus, and is undoubtedly a hybrid Primrose, having somewhat the habit of a Polyanthus and the pale yellow color and the fragrance of the English Primrose. The plant is ten or twelve inches in height, is perfectly hardy, and flowers earlier and continues in bloom longer than any other Primula. Each 20 cents; \$2.00 per dozen.

LYSIMACHIA CLETHROIDES.

A fine hardy plant, growing about two feet high, with long, dense, recurved spikes of pure white flowers. Each 15 cents; dozen, \$1.50.

LYTHRUM Roseum Superbum.

A strong-growing, shrub-like plant, producing large spikes of rose-colored flowers from July to September. Each 20 cents; per dozen, \$2.00.

GYPSOPHILA PANICULATA.

Gypsophilas are valuable for bouquet making, either green or dried. They are very graceful and easily cultivated. Should be in every garden. Flowers white. Each 15 cents.

PHYSOSTEGIA VIRGINICA. Delicate pink. Flowers resemble a gigantic heather. Each, 20 cents; dozen, \$2.00.

PINKS

Each 20 cents; per dozen, \$2.00.

Pink, Comet. A fine shade of red, flowers double, clove scented.

Her Majesty. Flowers very large, fringed, very double, and pure white. Fragrance delicious, clove-scented. Long stiff stems support the flowers. A rival of the Carnation.

Souvenir de Sale. Flowers a delicate soft rosy pink, being fully as large as a Carnation; beautifully formed, very double, and exceedingly useful for cutting.

White Reserve. A nicely fringed white. Ever-blooming.

PLATYCODON GRANDIFLORUM

The Chinese Bell Flower. In bloom the entire season. The flower resembles the Clematis in size and color. Two varieties, blue and white. Each 15 cents.

PERENNIAL PHLOX

One of the best of the hardy flowering plants. A show of brilliant flowers can be had from June until November. The varieties listed are all large-flowering. If you want something extra fine, plant generously of Perennial Phlox. Strong field-grown plants, each 20 cents; dozen, \$2.00.

Phlox, Cross of Honor. White, striped with lilac.

Esclamonde. Rosy lilac, shaded white; large purple center surrounded with white halo.

Eclairer. Carmine, salmon center, with rosy-white star

Fabrihan Wiese. Carmine shaded violet.

Isabey. Orange-salmon, center purplish crimson.

King of the Purples. A fine shade of purple.

Little Blush. Pure white, changing to delicate pink.

Lothair. Red, crimson eye.

Mt. Blanc. Pure white; dwarf.

Mlle. Cuppenheim. Pure white; late.

M. Bezanson. Fiery crimson, velvety purple eye.

Nettie Stewart. Pure white, faintly tinged pink at base of petals.

Premier Ministre. Rosy white, center deep rose.

Richard Wallace. Pure white with distinct violet eye.

Teddy. Rosy white, with carmine eye; tips of petals sometimes striped crimson.

**PERENNIAL PHLOX**

CHINESE PEONIES

The Chinese Peonies are desirable on account of their large size, fine colors, and profuse blooming. They are perfectly hardy, and will succeed on any ground unless so wet that the water will lie on the surface in the winter and spring. May be planted either in the autumn or spring. Extra fine roots, each 30 cents; dozen, \$3.00, except as noted.

Peony, Active. Rose, flowers large, very compact.

Amabilis Lilacina. Blush, center cream and white.

Beaute Francaise. Pink, center fringed.

Double White. Each 35 cents.

Dr. Bretonneau. Rose.

Duchess de Orleans. Violet-rose, center salmon.

Festiva alba. Pure White. Each 35 cents.

Fulgida. Crimson, large flower. Each 35 cents.

Limbata. Rose, large, fine.

Madame Morren. Outer petals blush, center salmon.

Nivalet. Rose, large and full.

Officinalis rubra. Rich deep crimson, very early, and one of the brightest of the dark-colored varieties.

Perfection. Rose, center salmon marked purple.

Pomponia. Purplish-pink, center salmon-rose.

Roi Guillaume. Light rose.

Rosa mutabilis. Rose and pink shaded.

Striata speciosa. Pale rose, center nearly white.

Tenuifolia flore-pleno. Foliage graceful and slender, making a fine contrast when arranged with the double dark crimson flowers, that nearly rival the rose in delicate perfume, perfection of bloom, and brilliancy of color. Blooms earlier than other varieties. Each 50 cents; two for 90 cents.

Triomphe du Nord. Violet and rose, large and fine.

HERBACEOUS SPIREAS

Spiræa palmata elegans. A beautiful, hardy, free-flowering plant, with sweet-scented white flowers and red anthers; a very pleasing and useful plant for cut flowers, and excellent for hardy herbaceous borders. Each 20 cents.

Venusta. A showy red-flowering species; very fragrant. Each 20 cents; dozen, \$2.00.

RUDBECKIA GOLDEN GLOW

Rudbeckia laciniata flore-pleno. A beautiful hardy perennial, attaining a height of eight feet, blooming from July to September. Flowers double, deep golden yellow, and borne on long stems, making it suitable for cutting. Each 20 cents; two for 30 cents; per dozen, \$1.50.

Newmani. Single, golden yellow, with black center; grows about eighteen inches high. Each 20 cents.

Purpurea, or Giant Purple Cone Flower. Flowers reddish purple. Two to three feet high. Each, 20 cents.

YUCCA

Yucca filamentosa. Erect plants with sharp-pointed leaves; will endure the winter in most parts of the country; sends up a strong stem bearing large, white, bell-shaped flowers. Strong one-year-old roots, 25 cents; strong two-year-old roots, 50 cents.



CHINESE
PAEONIAS

STOKESIA CYANEA

CORNFLOWER ASTER

One of the most valuable of the native hardy plants, growing from eighteen to twenty-four inches high, and of the easiest culture, succeeding in any open sunny situation. The flowers are borne profusely from July until frost, are of a handsome lavender-blue color, and measure from four to five inches in diameter. Each, 20 cents; dozen, \$2.00.

TRITOMA PFIZERII

FLAME FLOWER

A grand improvement on the old Tritoma Uvaria grandiflora, or Red Hot Poker. The flower spikes, which are produced with considerably more freedom than in the old variety, are of gigantic size; frequently four and a half feet high, with heads of bloom over twelve inches long, of a rich orange-scarlet, shading to salmon-rose on the edge. Each, 25 cents; dozen, \$2.50.

PENTSTEMON Barbatus Torreyi. Most useful hardy perennial, is in bloom from June until autumn, with panicles of brilliant scarlet flowers. Very fine. Each, 15 cents; dozen, \$1.50.

Coerulea. Dwarf. Flowers blue. Each 20 cents; dozen, \$2.00.

MONARDA DIDYMA. Bright red, showy flowers. Fine for planting among bulbs or in a mixed border. Each 15 cents; two for 25 cents.

VERONICA SPICATA. An elegant border plant. Long spikes of deep blue flowers. Each 20 cents; dozen, \$2.00.

POLEMONIUM, (Jacob's Ladder). Nice plants for border. Two varieties, blue and white. Each 20 cents; dozen, \$2.00.

Hardy Flowering Shrubs



XANTHOCERAS SORBIFOLIA HYACINTH TREE.

A valuable hardy shrub. If better known would be in every garden. From five to eight feet in height. Blooms early in spring. Flowers bell-shaped, one inch broad, in clusters about eight inches long, resembling those of the Horse Chestnut as well as those of the Hyacinth, completely covering the plant. Petals crumpled, white, marked with yellow, changing to purple at the base. Foliage light green. Each 60 cents.

HARDY AZALEAS

As the shrubs are too large to send by mail, we offer them free by express. Each \$1.00; dozen \$10.00.

Azalea Pontica (Ghent Azalea). Entirely hardy. Our collection contains the finest varieties grown, and cannot be surpassed for the varied richness of their colors.

Azalea mollis. One of the most gorgeous flowering shrubs. The very large and beautiful flowers of various colors are borne in clusters before the leaves appear in May.

BERBERIS THUNBERGII

A handsome low-growing form of Barberry of Japanese origin. Foliage abundant, leaves small, obovate; flowers reddish; berries bright crimson. In autumn the leaves turn a bright red and make a great display. A beautiful plant for the lawn or the front of the shrubbery, or for a low-growing ornamental hedge. Each, 25 cents.

CALYCANTHUS FLORIDUS

Sweet-Scented Shrub. Carolina All-spice. One of the most interesting and desirable of the medium-sized shrubs; height six to eight feet; handsome foliage; leaves and young wood aromatic; flowers one inch in diameter, color dark purple or chocolate. Strong plants; each 25 cents.

FORSYTHIA SUSPENS (FORTUNEI)

Golden Bells. One of the earliest spring-flowering shrubs, producing large, bright yellow flowers. Each 25 cents.

HYDRANGEA

Hydrangea paniculata grandiflora. As hardy as a lilac. A medium-sized, hard-wooded shrub, bearing immense clusters of white flowers, remaining in bloom a long time. Plants, according to size, 25 cents and 50 cents each.

PURPLE FRINGE (SMOKE TREE)

A spreading shrub, completely covered in summer with large, feathery, purplish panicles, having the appearance of clouds of smoke. Each 25 cents.

SNOWBALL—VIBURNUM

Japanese Snowball—Viburnum plicatum. Of lower and more compact growth than the old Snowball. The flowers are somewhat larger and of purer white; remain longer in good condition. Each 30 cents.

Viburnum Opulus sterilis. The well-known Snowball, produces large clusters of snow-white flowers in May. Each 25c.

SPIRÆA

The Spiræas are in the front rank among flowering shrubs for the lawn or garden. Beginning to bloom in May, they produce flowers abundantly through the summer. Each 25 cents.

Spiræa arguta. Dwarf. Flowers clear white, and freely produced. The best very early-flowering white Spiræa.

Anthony Waterer. Dwarf; constant bloomer.

Billardi. Flowers rose-colored, in terminal spike-like panicles, produced nearly all summer.

Billardi alba. Similar to Billardi; flowers white.

Bumalda. Half-Dwarf. Flowers deep rose.

Douglasi. Four to five feet high. Flowers rose-colored.

Van Houttei. A vigorous plant that sends up numerous tall, slender shoots, which curve gracefully, and the last of May or in June are literally covered with pure white flowers, making the bush a mass of bloom.



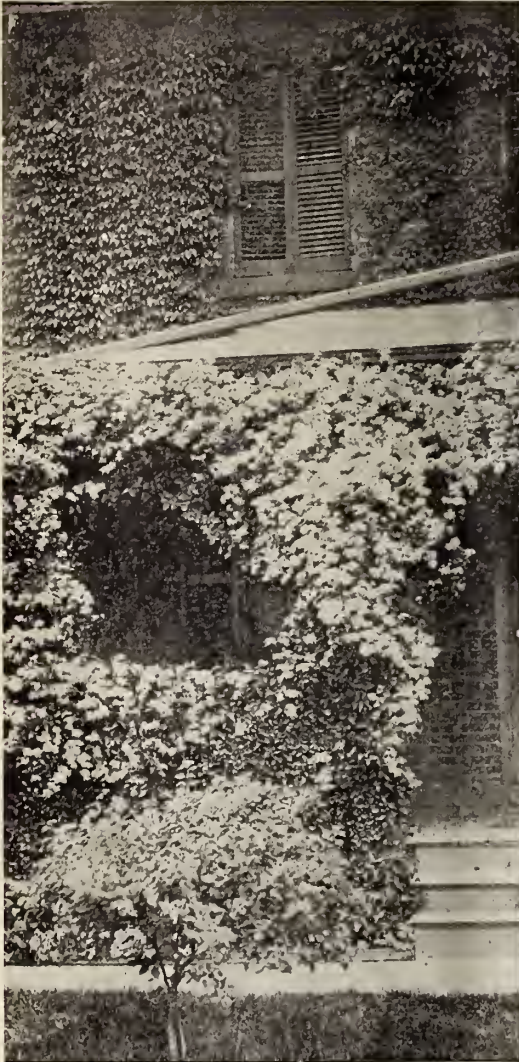
AZALEA MOLLIS



Hardy Climbing Plants



CLIMBERS are nature's drapery, and nothing produced by art can equal their grace. The hardy varieties are very valuable, for once planted they remain, getting larger and better every year. Train the plants to grow where wanted. Fertilize and cultivate them well if rapid growth is desired.



CLEMATIS PANICULATA AS A PORCH CLIMBER.

CHINESE MATRIMONY VINE

A vigorous hardy climber. Flowers bright purple, succeeded by scarlet berries nearly an inch long. Each 20 cents; two for 35 cents.

AMPELOPSIS

These hardy plants will grow in any location, and very rapidly. Each 25 cents; per dozen \$2.00.

Ampelopsis Veitchii. Clings very firmly to the side of a house or wall, and will soon form a perfect mass of foliage. Also known as Japan or Boston Ivy.

Quinquefolia, or Virginia Creeper. Sometimes called American Ivy and Woodbine; a very rapid grower, the leaves turning crimson in autumn. This is a native plant, and the hardiest and most rapid climber we have.

AKEBIA QUINATA

A Japanese hardy climbing plant; handsome compound leaves with five leaflets; purplish flowers and purplish mottled berries. An interesting plant. Each 25 cents.

BIGNONIA (Tecoma)

Bignonia radicans or Trumpet Vine. A hardy, strong-growing climber, with large trumpet-shaped, orange-scarlet flowers; very handsome. Each 20 cents.

HONEYSUCKLE

One of the most desirable hardy climbers. The plants grow with great freedom in any good garden soil, and commence to bloom the second year from planting. Each 25 cents; one of each for 40 cents.

Honeysuckle, Hall's. Flowers pure white, changing to yellow.

CLEMATIS

The Clematis makes a rapid growth, and produces its beautiful showy flowers in the greatest profusion. For pillars, trellises, bedding in masses, or planting about rock-work, it cannot be excelled. In the fall give the plants a good top-dressing of well-rotted manure.

Clematis paniculata. A hardy and remarkably handsome climbing plant. The freedom of bloom is quite unparalleled, for when the plant is in full flower the greater part of the foliage is entirely hidden from view. Flowers pure white, star-shaped, about one inch in diameter, and borne in large clusters on stiff stems from four to six inches long, that rise from the axils of the leaves; they will last several days as cut flowers, retaining their freshness, and their fragrance is very agreeable. The plant is a strong, quick grower, with broad, healthy foliage, which is seldom attacked by insects. Each 25 cents; two for 40 cents.

LARGE-FLOWERING VARIETIES

Jackmanni. Large, intense violet-purple flowers, from four to six inches in diameter. Each 40 cents.

Madame Edouard Andre. Fine bright crimson; free from any purplish shading. Each 40 cents.

CHINESE WISTARIA

A strong and rapid grower, desirable for trellises, porches, etc. Flowers light purple, showy, and produced in long racemes. Each 25 cents.

We pay the postage and express charges on all goods listed in this Catalogue, unless otherwise noted.



Small Fruits for the Home Garden

STRAWBERRIES

For field-culture plant in rows four feet apart, with the plants one foot apart in the row. For garden-culture plant three feet by one foot. Should the ground not be prepared for planting on receipt of the plants, they should be heeled in, in a cool, moist, shady place. Do not sprinkle the foliage, as it causes a moisture to collect which is very injurious to the crowns, causing them to rot. In setting the plants, be careful to have the crowns even with or a little above the surface of the ground, and to have the trench or hole in which the plant is set deep enough to allow the roots their full length. Some varieties of Strawberries have pistillate or imperfect flowers. These must have perfect-flowered varieties planted every 15 or 20 feet among them, or they will produce imperfect fruit. The pistillate varieties are marked (P).

At dozen and hundred prices we prepay postage or express charges; at thousand rate customers will pay express or freight charges.

Dozen, 25 cents; 100, \$1.25; 1000, \$5.00; except where noted.

Vick's Uncle Joe is an entirely new and distinct seedling. Its fruit is perfect in form, of a dark, rich color, of firm flesh, monstrous in size and of a quality not usually found in fruit of its size. Its berries are most uniform in size and shape. Among other attractive features, its early and continuous yield during the season is attributable to its strong, healthy and robust growth. It is of the perfect flowering class. Each, 15 cents; dozen, 75 cents; twenty-five, \$1.00; hundred, \$3.50. Fifty at hundred rate.

Climax, New. This grand new strawberry originated with Henry W. Graham, of Maryland, and is a cross between Bubach and Hoffman. In 1906 he had 1,100 plants, which he set on less than a quarter of an acre. In 1907 he shipped 6,300 quarts, or about 20,200 quarts to the acre. The Climax ripens a little later than Michaels Early. We would advise all our patrons to give it a trial, if only a dozen plants. Dozen, 35 cents; hundred, \$1.50; thousand, \$8.00.

Echo. We consider this variety superior both in flavor and sweetness, and while it is not a good shipping berry, for the home garden it should be planted in preference to all others. Fruit brilliant red, of medium size, second early. Plants very productive, and continue to bear late in the season.

Gandy. The best late Strawberry in market, and a general favorite with fruit growers everywhere. The berries are large and uniform in size, of a rich crimson color, and quite firm. Plant a vigorous grower and good cropper. Late to very late.

Olympia, New. Originated in California. This is the most remarkable strawberry to endure drought we have ever grown. In 1903 we had sixty-five days without rain and this was the only strawberry that remained fresh and green and bore a full crop, while all other kinds were badly dried up. It is being planted very largely in California. The root of the Olympia penetrates into the ground deeper than any other strawberry we have ever grown. Strong, robust grower; very productive. Fruit medium to very large. Fruit stalks exceedingly stout. Ripens mid-season. Will do well on light dry soil. Dozen, 50c.; hundred, \$2.00.

Seaford. (P). Fully equal to Bubach in size; far more productive, firm enough to meet all requirements; color deep, glossy red, and quality fit for a king. The plant is as large as Enbach and a much more vigorous grower, while it ripens its crop much faster and several days earlier, and, therefore, commands a higher price.



VICK'S UNCLE JOE

Stevens' Late Champion. Originated in New Jersey.

Plants of more than ordinary vigor; a good runner; perfectly healthy; color bright. A fine looking berry. Ripens after most other varieties have gone. We consider it the best late strawberry we grew last season. Any one who wants a good, late kind should plant Stevens' Late Champion, as it is properly named. Dozen, 35 cents; hundred, \$1.50; thousand, \$8.00.

OTHER STANDARD VARIETIES.

Brandywine, Eureka, Jessie,
Bubach, McKinley, Wilson,
Crescent (P), Nick Ohmer.

GOOSEBERRIES

Gooseberries thrive best if planted where they will receive a partial shade. Plant the same distance as Currants. Gross feeders, liking a deep, rich soil.

Chautauqua. Fruit a light yellow (nearly white), free from spines and hair. Thick-skinned, very sweet, and of exquisite flavor. Each 40 cents; dozen \$3.50.

Downing's. A native seedling, greenish white, vigorous, hardy and prolific, large fruit. Free from mildew. Each 20 cents; dozen \$1.00.

Golden Prolific. Fruit large, deep golden yellow, excellent in quality and very attractive in appearance. Perfectly hardy, prolific, a good grower, and unusually free from mildew. Each 40 cents; dozen \$3.50.

Industry. A new foreign variety. Fruit dark red, very large, and of a rich agreeable flavor; an immense yielder. Each 30 cents; dozen, \$2.00.

Pearl. Grown from seed of Houghton, crossed with Ashton Seedling. Worthy of special notice because of its good quality, productiveness, and freedom from mildew. Each 20 cents; dozen \$1.00.



THE RATHBUN BLACKBERRY

BLACKBERRIES

For field culture, plant in rows six feet apart and plants three feet apart in the row. For garden culture, five by four feet.

Dozen 60 cents; 100, \$2.00; except where noted. At the dozen price we prepay mail or express charges; 100 lots by freight or express, charges not prepaid. Not less than 50 at 100 rate.

THE RATHBUN BLACKBERRY

Since we introduced this wonderfully prolific and monster berry, it has acquired an enviable reputation. It is by far the largest Blackberry in cultivation. In quality it surpasses the luscious Dewberry, being without the hard core common to Blackberries; in fact it melts in the mouth. It is the most desirable variety either for table use or for canning. The plant is hardy, vigorous, and a great bearer. Another strong point in its favor is its habit of rooting from the tips, like Blackcaps. It brings more in the market; fruit holds to large size throughout the season; and as a shipper it is unsurpassed. The price is so low that all should try at least a few of the best Blackberry. Each 10 cents; dozen 75 cents; hundred \$3.00.

Blackberry, Agawam. Hardy and very prolific; fruit sweet and soft to the center. Early and reliable sort.

Erie. Fruit roundish, uniform in size, excellent quality, handsome. A valuable variety for home use or market.

Kattatiny. Tender in northern localities, and for this cause alone hardier sorts have replaced it. South of New York it is uniformly hardy, and in that region it is highly esteemed. Strong grower, very productive. Berries large, handsome, and of best quality.

Minnewaski. Vigorous, quite hardy in this region, very productive; large, jet black, shining fruit, uniform size, sweet and soft to center; ripens early, continuing to middle of September. Doz., 75 cts.; hundred \$3.00.

Snyder. Very hardy. Berries medium size, produced abundantly; sweet, juicy, and without a hard core when fully ripe. Adapted to the northwest, where other varieties are injured in severe winters.

Wilson Junior. Moderately hardy, will do well in the Southern Middle States, and farther south. Vigorous grower and very productive; fruit large, good, early.

CURRANTS

Choose a moist, rich soil for Currants, and keep it well manured. Plant five feet apart each way. Keep free from weeds and grass, and give liberal cultivation. To destroy the currant-worm that feeds on the leaves, dust them with powdered white hellebore.

Each, postage paid, 15 cents; dozen, \$1.00; hundred, \$4.50, except where noted. At the single and dozen prices we prepay mail or express charges. Hundred lots by express or freight, charges not prepaid.

All strong two-year-old plants and true to name.

Currant, Cherry. Large, productive.

Black Champion. An English sort; fruit large, handsome, highly-flavored; extra good for jams, etc.

Fay's Prolific. One of the best; very productive, large size, good flavor, bears early; adapted to light soils. Standard for market.

Lee's Prolific. Black; good for all purposes; early, large, productive.

Pomona. Strong, vigorous grower, entirely hardy and bears profitably the second year after planting; we can recommend it as one of the best red currants.

Red Cross. New variety, fully tested and found worthy of introduction; plants strong, vigorous, and very productive; clusters large, often four inches long; berries large; fruit grows in masses, giving additional facilities in gathering; fruit of superior quality; a trial will both please and satisfy you.

Victoria. A splendid variety, ripens two or three weeks later than the others, continuing in fine condition for a long time; bunches very long, medium-sized bright red berries of the best quality.



RASPBERRIES—Red, Black, and Yellow

There are two general types of Raspberries, and they require different treatment. Blackcaps, and others that increase from the ends of the canes, should be planted $3\frac{1}{2} \times 7$ feet. Prepare the land same as for Strawberries. Cultivate often enough to keep the soil loose and free from weeds. When the canes attain the height of one foot pinch off the ends. This causes the canes to branch, grow stocky and self-supporting. In the spring of the bearing year cut these branches back to within six inches of the main stalk. After fruiting, cut out all the dead wood. Red Raspberries, and others that sucker, should be set $5 \times 3\frac{1}{2}$ feet apart, when they must be cultivated both ways. Allow only three or four canes in each hill to grow.—treat all others that spring up as weeds. When three or four feet high, pinch back cane same as with Blackcaps. The secret of raising fine crops of Raspberries is in rigorous pruning and keeping suckers down. If not checked, the tendency is to mat the surface with canes, when very little fruit is secured. For garden culture the red varieties may be set three feet apart each way, and Caps 4×3 feet.

COLUMBIAN RASPBERRY

This variety is so well advertised and so popular as a berry for the home garden that it is known from Maine to California. One-half dozen strong plants will supply a family with fruit, as it grows from eight to twelve feet high, and in fruiting season its branches are covered with fine, large, crimson berries. Plants perfectly hardy, have endured 28° below zero without freezing. It is the best in the world for canning, and grown largely for evaporating, retaining its color, form and flavor remarkably. Each 10 cents; dozen 60 cents; hundred \$2.00.

RASPBERRIES—Red

Loudon. This Raspberry has been tested in many localities, and practical fruit growers agree that it is an advance beyond the best of the standard varieties. Hardier, better, and far more productive than Cutlbert, and the berries are larger and the drupes longer. Berries firm, bright red; cling to the stem and do not crumble in picking; splendid shipper. Plant vigorous, heavy yielding, and practically thornless. Dozen 70 cents; hundred \$2.50.

Marlboro. The largest of the early reds, ripening earlier than the Hansell. Similar to the Cutlbert, but is gone before the Cutlbert comes on. Canes dwarfish, fruit very prolific in rich soil. Doz., 60 cts.; hundred \$2.50.

Ruby, New. This new berry combines earliness, vigor, hardiness, large size and great productiveness; qualities that will give it a foremost rank. It resembles the Marlboro in color of fruit, but is a stronger grower. The introducers of this berry say:



RUBY RASPBERRY

"The Ruby Raspberry is a seedling of the well-known Marlboro variety. It partakes of its parent in its habit of growth, but is much more hardy and vigorous. Canes growing six or more feet in height with a good strong foliage. The fruit is borne in great quantities, and is of large size, good bright color, and firm. An excellent shipping berry. It has proved itself to be the most profitable sort wherever tried. Ripens with the earliest." Each 20 cents, two for 35 cents, dozen \$1.00; hundred \$4.00.

RASPBERRIES—Black

Cumberland. A most remarkable Raspberry on account of its wonderful size and good qualities. It is thought to be a seedling from the Gregg, with a dash of Blackberry blood in it, but it is a true Raspberry; very hardy, having withstood a temperature of 16° below zero; very productive, making large crops of enormous berries about one inch in diameter. Fruit very firm and may be shipped long distances; may be called a mid-season variety, coming in shortly ahead of the Gregg. Dozen 70 cents; hundred \$2.50.

Mills. This new variety is extremely large, perfectly hardy, free from blight or rust, large as the Cumberland, very firm, and with the bloom somewhat like the Gregg. It has been the most productive of all the Black Raspberries we have tried, and brings the highest price of any in the market. Dozen 70 cents; hundred \$2.50.

Ohio. Fruit large, fine quality, and best of Cap sorts for drying. Strong, hardy, productive, late. Dozen 60 cents; hundred \$2.00.

Palmer. Resembles Standard Early Tyler, but larger and better; recommended for early bearing. Dozen 60 cents; hundred \$2.00.

RASPBERRY—Yellow

Golden Queen. Very productive; fruit large, light amber color; equally as hardy as any other sort. Dozen 70 cents; hundred \$2.50.



COLUMBIAN RASPBERRY

TEN OF THE BEST GRAPES

Vines are strong two-year plants, true to name.



MOORE'S DIAMOND

Grape, Agawam (Rogers 15.) Large red, borne in clusters of good size. Excellent quality. Aromatic flavor, peculiar to this variety. Strong growing, productive. Each 20 cents; dozen \$1.25; hundred \$6.00

Brighton. Dark red; very early, quality best, should be planted near the Worden or Concord, or some other self-fertilizing variety, to promote fruit setting. Each 20 cents; dozen \$1.25; hundred \$6.00.

Catawba. Large, compact; berries deep red, sweet and juicy. Each 20 cents; dozen \$1.25; hundred \$6.00.

Concord. Black. Most popular and reliable variety cultivated. Each 20 cents; dozen \$1.25; hundred \$6.00.

Campbell's Early. Several years of observation and tests prove it a strong, vigorous, hardy vine; thick, healthy, mildew-resisting foliage; always sets its fruit well and bears abundantly; clusters large, usually shouldered, compact and handsome; berries large, nearly round, often an inch or more in diameter; black, with light purple bloom; skin thin but tenacious, bearing handling and shipping admirably; flavor rich, sweet, slightly vinous; flesh rather firm but tender, parting easily from its few and small seeds; very early; remarkable keeping qualities. Each 30 cents; dozen \$2.00.

Delaware. Light red, early, of best quality. Each 20 cents; dozen \$1.25; hundred \$6.00.

Moore's Diamond. Bunches large, compact; berries large, white, with a whitish bloom; skin thin; flesh melting, juicy, and sweet to center; vine strong and healthy and an abundant bearer. Each 20 cents; dozen \$1.25; hundred \$6.00.

Niagara. Strong, vigorous grower; bunch and berries large and of good quality; color light green; very productive. One of the best light colored grapes. Each 20 cents; dozen \$1.25; hundred \$6.00.

Nectar. A cross between Concord and Delaware. Vine hardy and a good grower; clusters of fruit of medium size, compact; berries medium size, color jet black, with a fine bloom; quality excellent, with a pure, rich, vinous flavor. Ripens at the same time as the Delaware. Each 30 cents; dozen \$2.00.

Worden. The best Black Grape, and the most productive and satisfactory of all varieties. Very strong and hardy. Each 20 cents; dozen \$1.25; hundred \$6.00.

At single and dozen prices we prepay mail or express charges. Hundred lots by express not prepaid.

Special prices on large quantities of all varieties of Small Fruits.

MISCELLANEOUS SUPPLIES

Grafting Wax. $\frac{1}{4}$ lb., 15 cents; $\frac{1}{2}$ lb., 25 cents; lb., 35 cents, postpaid.

Knives. Postage paid.

Budding.	No. 718—1 blade, open, cocoa handle	\$0 20
	No. 852—1 blade, folding, cocoa handle	60
	No. 910—1 blade, folding, ivory handle	1 00
	No. 850—2 blade, folding, ivory handle,	1 00
	No. 419—2 blade, folding, ivory handle, superior steel	1 25
	No. 690—2 blade, folding, buffalo handle, ivory tip	80
	No. 919—1 blade folding, ivory handle	1 00
	No. 917—1 blade, folding, ivory handle, sheep's foot blade	1 00
Pruning.	No. 1002—1 hook blade, open, wood handle	35
	No. 117—1 hook blade, folding, cocoa handle, round end	70
	No. 510—1 blade, folding, cocoa handle, steel capped	1 00
	No. 801—1 blade, folding, cocoa handle, 4-inch blade	50
	No. 923—1 blade, folding, stag handle, 4 inch blade	80
	No. 928—1 straight blade, folding, cocoa handle $4\frac{3}{4}$ -inch blade	1 15
	No. 928—1 straight blade, extra strong, folding, stag handle, $4\frac{3}{4}$ -inch blade	1 25

Labels. Wooden. Charges not prepaid.

$3\frac{1}{2}$ inch, pot, per 1000	\$0 45	8 inch, pot, per 1000	\$3 00
4 inch, pot, per 1000	50	$3\frac{1}{2}$ inch, tree, notched, per 1000	45
$4\frac{1}{2}$ inch, pot, per 1000	55	$3\frac{1}{2}$ inch, tree, pierced, per 1000	50
5 inch, pot, per 1000	75	1 x 5 inch, tree, notched, per 1000	1 00
6 inch, pot, per 1000	1 00		

Plant Tubs. Fibrotta ware, practically indestructible, impervious to moisture, light, easy to handle. $12\frac{1}{2}$ -inch, each \$1.25; $13\frac{1}{2}$ inch, each \$1.50; charges not prepaid.

Potting Soil. Especially prepared and sifted, per bu., 60 cents; bbl., \$1.50; charges not prepaid.

Plant Stands. Fibrotta ware. 16-inch, \$1.25; 18-inch, \$1.35; 20-inch, \$1.50; charges not prepaid.

Pruning Shears. Charges not prepaid.

No. 1537—8-inch	\$0 65	6-inch, Nickel-Plated	\$0 90
No. 1537—8 $\frac{1}{2}$ -inch	75	10-inch, Wiss, genuine	2 00
No. 1538—8 $\frac{1}{2}$ -inch	90		

Raffia. For tying, per lb., 20 cents; 5 lbs., 90 cents; 10 lbs., \$1.50; charges not prepaid.

Raffia. For Basket making. Our present list embraces the following colors: No. 3, Indian Red; No. 12, Light Orange; No. 5, Yellow; No. 16, Bright Yellow; No. 14, Sage Green; No. 17, Emerald Green; No. 6, Dark Navy; No. 20, Purple; No. 8, Pink; No. 10, Brown; No. 9, Black. Per ounce, 6 cents; $\frac{1}{4}$ lb. 20 cents; $\frac{1}{2}$ lb., 40 cents; lb., 75 cents. Natural, per ounce, 5 cents; $\frac{1}{4}$ lb., 8 cents; $\frac{1}{2}$ lb., 15 cents; lb., 25 cents. Charges not prepaid.

Reeds—	oz.	$\frac{1}{4}$ LB.	LB.	oz.	$\frac{1}{4}$ LB.	LB.	oz.	$\frac{1}{4}$ LB.	LB.		
No. 1	\$0 08	\$0 30	\$1 00	No. 3	\$0 06	\$0 20	\$0 65	No. 5	\$0 04	\$0 15	\$0 50
No. 2	07	25	75	No. 4	05	20	60	No. 6	04	15	50

Sweet Grass: Per ounce, 15 cents; $\frac{1}{4}$ lb., 40 cents; lb., \$1.50; charges not prepaid.

If Raffia, Reeds, or Sweet Grass are wanted by mail, add postage as follows: ounce, 2 cents; $\frac{1}{4}$ lb., 5 cents; pound, 16 cents. Samples of Raffia and Reeds on application.

Syringes. Brass. Charges not prepaid.

No. A—12-inch barrel, 1-spray rose and jet	\$2.25
No. 12—14-inch barrel, 2-spray rose and jet	3 50
No. 11—16-inch barrel, 2-spray rose and jet	4 50
No. 5—18-inch barrel, 2-spray rose and jet	5 00

Sprinklers. Tyrian. Rubber, made with a perforated detachable top; valuable for window gardening, bouquet sprinkling, dampening clothes, etc.; postage paid.

6-ounce size, straight neck	\$0 75	8-ounce size, straight neck	\$1 00
6-ounce size, bent neck	85	8-ounce size, bent neck	1 10

Weeders. Claw, 20 cents; Brown's Easy, 40 cents; Hazeltine's, 30 cents; Lang's, 30 cents; postage paid. Brown's Easy, long handle, 75 cents, charges not prepaid.

FERTILIZERS

Floral Fertilizer. A chemically correct flower food for house plants. Has no odor, and can be used dry or dissolved in water for sprinkling. Small size (feeds 25 plants six months), 25 cents; large size (feeds 25 plants for one year), 50 cents; postage paid.

Pure Raw Bone Meal. Three per cent. ammonia, 24 per cent. phosphoric acid, 52 per cent. potash. Per sack of 100 lbs. \$3.00; charges not prepaid.

Pulverized Sheep Manure. 6 lbs. 25 cents; 25 lbs. 60 cents; 50 lbs. \$1.00; 100 lbs. \$1.75; charges not prepaid.

James Vicks Sons,

Rochester, N. Y.

Amount Enclosed

P. O. Order \$

Express M. O. \$

Draft . . . \$

Cash . . . \$

Please send me the articles named below:

Name

P. O. Street

State P. O. Box

County

Nearest Railroad or Express Office

Name of Express Co. Date

Persons sending large orders will please state their nearest Express Office, and if it will be convenient to receive goods by express.



James Vick's Sons, Rochester, N.Y.