

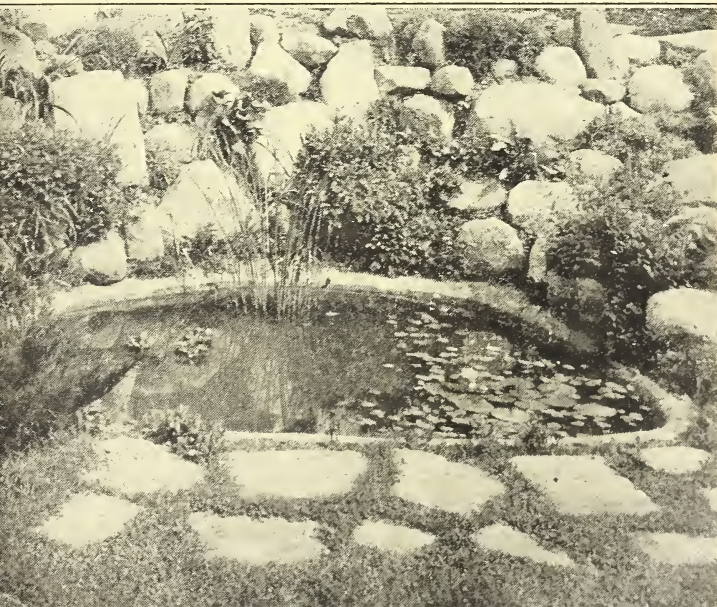
Historic, Archive Document

Do not assume content reflects current scientific knowledge, policies, or practices.



RED GOLD
(Sugar-Saver)

1931 Catalogue of
Hardy "Blizzard Belt" New Fruits
Shade Trees, Shrubs, Perennials
and Rock Garden Plants
THE GARDNER NURSERY CO.
Osage, Iowa



INTRODUCTION

IF YOU are not already acquainted with us I want to grasp your hand across the miles, and through this catalogue introduce you to THE GARDNER NURSERY CO. of Osage, Iowa, and to our Hardy "Blizzard Belt" trees and plants.

We are Gardeners by name and Gardeners by occupation and are proud of it. Our business was started away back in 1857, when the writer's grandfather, Nathaniel Clarke Gardner and family, with all of their worldly goods, left Otsego county, New York, in an ox-drawn covered wagon, and after months of slow traveling, crossed the great Mississippi and found here in northern Iowa, the location of their dreams.



Charles F. Gardner examining a Number 999 Giant plant on left and Premier plant on right. The blossoms on these plants had been crossed and a breeding box placed over them to exclude pollen from outside. Red Gold and Blizzard King came from this cross.

In the covered wagon, and counted as the family's most prized possessions, were hardy perennial flowering plants, fruit trees, strawberry plants, and seeds for the planting of the new western home. This was the beginning of the Gardner Nurseries, now being conducted by the third generation of descendants of this pioneer horticulturist.

At the close of the Civil war, Capt. Charles F. Gardner became associated with his father, Nathaniel C., and started the work of Fruit Breeding, in which he was very successful.

After many years of work and the making of thousands of crosses, he succeeded in originating a new race of sugar sweet strawberries that are so far ahead of the ordinary varieties that they are hard to describe on paper. One of these new varieties is so outstanding as to be in a class by itself, and we have named it Red Gold.

CLARK E. GARDNER.

MAR 28 P.M.

DRASTIC PRICE REDUCTION. 50 per cent DISCOUNT SLIP NUMBER 10, good for 10 days only, Inclose this slip with your order for trees and plants selected from our catalogue and it will entitle you to deduct a straight 50 per cent from total amount of your order, provided that it is mailed to us within 10 days from date on this slip, and accompanied with check, P.O. Order or Currency. **THE MORE YOU BUY, THE MORE YOU SAVE.** A \$20.00 order will cost you but \$10.00 with other amounts at same ratio of saving. **SPECIAL NOTICE.** Radio Offers, Mulch Paper & Squares, Plant Food & Peat Humus are not included in the Discount Offer. Inclose this slip with order and mail to **THE GARDNER NURSERY COMPANY, Osage, Iowa.**



A box of Red Gold berries reduced in size. Strawberries like these will always sell at high prices.

Gardner's Red Gold Sugar Saver Strawberry

The greatest profit maker in the strawberry kingdom. The largest Red Gold berry to date, measured $8\frac{1}{2}$ inches around. It was grown by one of our customers in Superior, Wisconsin. The big berries, coupled with the enormous yield, attracted so much attention that the Evening Daily Telegram had photographs taken of the plants and ran an illustrated news item, headed "An $8\frac{1}{2}$ Inch Strawberry Grown Here." We have a clipping from the paper, showing a picture of the $8\frac{1}{2}$ -inch berry, framed and hung in our display room. We also received the big berry itself, which arrived in good condition. This berry beat our own records, as our largest Red Gold measured $8\frac{1}{4}$ inches around, two of them going entirely across the top of a quart berry basket.

As you know, most large strawberries are coarse, pithy and of poor quality, but Red Golds are just the opposite. Red Gold berries are simply filled with sweetness and that good old fashioned wild strawberry flavor predominating. They are firm and meaty, but not the least bit pithy or woody and when properly picked they will stand shipping long distances as the berries are inclined to dry like figs, rather than going into juice and breaking down as do the ordinary strawberries when overripe. As a heavy yielder of highest quality berries, Red Gold has no equal. We have actually counted 44 berries, buds and blossoms on a single fruit stem and 11 stems on one plant, the tallest measuring $15\frac{1}{2}$ inches. The color of the Red Gold berry is a brilliant, shining red, each berry looking as if it had been varnished. As you taste a Red Gold berry for the first time, you can easily imagine that you are eating a new fruit, having the combined flavors of a rich, juicy cantaloupe, coupled with a well ripened peach, with the mild tartness of a Hawaiian Pineapple and with that good old fashioned wild strawberry predominating. Red Gold berries while being firm for shipping, have a rich melting flesh that simply dissolves in your mouth leaving a taste that calls for more. With a garden of Red Gold plants on your place, strawberry shortcake will take on a new delight and you cannot have them too often. You can eat your fill of Red Gold berries every day throughout the strawberry season and not be troubled with acid. Even people who cannot eat ordinary strawberries on account of their acidity can eat and thoroughly enjoy Red Golds, just as long as they can get them.

Red Gold berries have sold in our Home Markets at a premium of 5 cents a quart in competition with the best ordinary strawberries that can be grown.

To Whom It May Concern:

This is to certify that the undersigned handled The Gardner Nursery Company's new Red Gold June fruiting Strawberries during the past three years and found a ready sale for same at 5 cents a quart premium over prices received for all other varieties of Strawberries.

Huesselmann's Grocery
Melson's Grocery
Meyer's Cash Grocery

The Little Gem Grocery
Faultless Grocery
Sig Klemesrud's Grocery

During the past few years we have sold a large percentage of our berries by inviting our customers to come to our Red Gold fields and pick their own berries. One day we had 93 auto loads of people who came from a radius of 70 miles and after once seeing the Red Gold berries and getting a taste of their quality, many of these people came back again, bringing their friends with them, and would drive right past large fields of ordinary strawberries, sold at



This photograph shows a bed of Red Gold plants in blossom. Notice how thick the stems are and how they stand up above the leaves.

a lower price, in order to get the genuine Red Gold. The large sturdy fruit stems hold the big Red Gold berries up off from the ground and makes picking a pleasure. The berries hull very easily and being so sweet and meaty only one-half the sugar is required to make the most delicious strawberry preserves you ever ate. The saving in sugar is a big item for in putting up 100 quarts of Red Gold berries a full 100 pound sack of sugar is saved and at the same time you have a much higher grade of preserves than is possible to make with ordinary berries. Red Gold berries will be in great demand for hulling and sugaring and packing in barrels for freezing and placing in cold storage, where they will keep fresh for a long time.

Setting Red Gold Plants practically gives you an Insurance Policy on your strawberry crop for there are so many buds on a fruit stem and they open for so long a time, that you can have a two days' rain, or a light freeze and only injure a very small percentage of the blossoms. There are from 15 to 44 buds on the Red Gold fruit stems as against 7 to 11 on the ordinary strawberries.

Red Gold is a very strong grower and is practically immune from rust and other strawberry diseases and is also frost resistant to a most remarkable degree. It is classed as a once-a-year fruiting variety in northern States, but has a longer season than ordinary strawberries. Berries commence ripening with Premier, but good picking continues for several days after Premier are all gone. In the far south Red Gold fruits all winter.

Red Gold plants make runners so freely that you will have heavy matted rows when set 2x4 feet or 5444 plants to the acre. By putting the new patented Mulch Paper Squares around the plants as soon as set, Red Gold will make strong matted rows set 4x4 feet or 2722 plants to the acre. When set in "Hill System" with plants 2 feet apart each way, the plants stool to enormous size. They have a deep penetrating root system, going into the ground to a depth of 12 to 15 inches, enabling the plants to withstand the extremes of dry weather conditions and fruit heavily during such times when the ordinary surface rooted varieties are a partial or total failure.

A cash income of \$800.00 to \$1500.00 a year from an Acre Planting, or from \$200.00 to \$500.00 from a Thousand Plant Setting of Red Gold is a conservative estimate. Much higher returns may be expected where ground is extra good, or where Mulch Paper is used and conditions are favorable for marketing.

Nurserymen and horticulturists who have seen our fields of Red Gold in fruiting have been amazed at the size of the berries, the big stout fruit stems, the immense yields and the wonderful fragrance and sweetness of the berries themselves. After seeing and tasting the berries, they were not surprised that our Home Stores were selling Red Gold berries at a premium of 5 cents a quart over all other varieties of strawberries.

We mailed fruit stems and boxes of ripe Red Gold berries to Prof. Frank Darrow, the strawberry expert of Bureau of Plant Industry, Washington, D.C., and received a splendid letter, remarking about the large size of stems and even set of so many big berries, etc.

It has always been our policy to reduce prices on our new fruits as soon as our stocks of plants would allow us to do so. This year our fields of Red Gold made up the finest lot of plants we have ever grown and our reduced prices on early orders for spring 1931 shipment are as follows:

12 Red Gold plants, postpaid	\$ 1.00
25 Red Gold plants, postpaid	1.50
50 Red Gold plants, postpaid	3.00
100 Red Gold plants, postpaid	5.00
1000 Red Gold plants, by express collect	40.00

IMPORTANT—Gardner's Red Gold strawberry is an entirely different variety from the strawberry found growing wild in Michigan and which was sold under the name of Red Gold, until parties growing same were requested by Pomological Division of Department of Agriculture, Washington, D. C. to cease the use of the name Red Gold, as we had the priority right to use the same as a name for a strawberry. See fruit stem of Red Gold on pages 12 and 13.

The Gardner Nursery Company

EXTENSIVE GROWERS OF

Hardy Perennial and Rock Garden Plants

Distributors of

GATOR-HIDE MULCH PAPER
ROLLS, ANCHORING STRAPS
AND SQUARES

ORIGINATORS OF

Red Gold Sugar Saver June-Fruiting Strawberry
No. 999 Giant Everbearing Strawberry

Specializing in

PEONIES, IRIS, PHLOX
HOLLYHOCKS, COLUMBINES
ORIENTAL POPPIES, ETC.



Osage, Iowa

CONCERNING OUR RADIO OFFERS

Esteemed Friend:-

Have you happened to TUNE IN on our RADIO ANNOUNCEMENTS as are now being broadcast over STATIONS WAAW, WDZ, WBBZ, WHBU, WJAG, KTAT, WBDJ, WXBS, WCBS, WOV and others?

Here are four of the SPECIAL BARGAIN OFFERS that we are making in these RADIO ANNOUNCEMENTS and in which, you as a lover of flowers and beautiful trees, will be interested.

RADIO ORDER NUMBER 1. This offer is made for advertising purposes and contains 44 of our best HARDY TREES and plants:

- | | |
|-----------------------------|-----------------------------------|
| 1 CHINESE ELM 1-2 to 1 ft. | 2 PICEA EXCELSA EVERGREENS 2 yrs. |
| 1 MUGHO PINE 2 yrs. | 4 ORIENTAL POPPY perennial. |
| 4 SWEET WILLIAM, perennial. | 2 CANTERBURY BELL plants. |
| 2 ROCKY MT. COLUMBINE. | 6 RED GOLD strawberry plants. |
| 6 BLIZZARD KING strawberry. | 12 MARY WASHINGTON ASPARAGUS. |

4 GLADIOLUS, assorted. This entire lot of 44 choice HARDY TREES and PLANTS will be shipped to you at planting time in spring, POSTPAID, SAFE ARRIVAL and SATISFACTION GUARANTEED, if you will write for them at once and inclose a dollar to help cover the propagating and mailing expense.

RADIO ORDER NUMBER 2. This covers 6 Hardy PYRETHRUM or Painted DAISY plants that we will mail at planting time if you will send for them at once and inclose 25 cents for mailing expense.

RADIO ORDER NUMBER 3. This very popular offer is for 6 ORIENTAL POPPY plants that grows the big flaming scarlet flowers so much admired by all who see them. You can have these 6 fine plants if you write for them at once and inclose 25c for propagating and mailing expense.

RADIO ORDER NUMBER 4. More EVERGREENS are needed in all parts of the country. This offer includes 6 PICEA EXCELSA the beautiful Spruce from Norway and 1 MUGHO DWARF PINE in strong 2 year old trees, suited for growing in lawn, park, cemetery or ROCK GARDEN. You can have these 7 EVERGREENS, postpaid at planting time this spring if you write for them at once and inclose 25 cents to help on propagating and mailing.

You can order any or all of these ADVERTISING RADIO ORDERS direct from this letter, providing that you send in your request for them at once. You need not list out the varieties, just give the number or numbers of the orders you want and we will reserve what you order and ship them to you at planting time this spring, postpaid and safe arrival and satisfaction guaranteed.

A copy of our 1931 catalogue is inclosed. In it you will find descriptions and low prices on a very fine line of Hardy "BLIZZARD BELT" new fruits, shade trees, shrubs, perennials, rock garden plants, etc. You are favored by being one of the fortunate ones to have a numbered DISCOUNT slip in your catalogue. Look for it and read it carefully for it will make you a big saving on your order for this spring.

Everything points to a good year for setting all sorts of trees and plants and we sure will be pleased to co-operate with you and to help you in every way that we can.

Awaiting your reply and wish best of wishes, I am,

Sincerely yours,

CLARK E GARDNER, President.



Charles F. and Clark E. Gardner testing new Hybrid Everbearing Strawberries. Fancy Evergreens in Background.

Blizzard King Strawberry

This new variety came from same breeding and is an own brother of Red Gold. If you like a medium tart strawberry, of large size, excellent quality and a splendid shipper, Blizzard King will fill the bill. The berries with us are the first to ripen, beginning to show color a few days before Red Gold. Plant is a strong grower, making good matted rows even during dry seasons. Fruit stems are large with 8 to 12 berries on a stem, but they do not stand up, nor grow to the height of Red Gold stems, but are more like the ordinary varieties of strawberries in that respect.

Red Gold and Blizzard King make good mates when planted together, and will give you two distinct types of high grade strawberries that will be enjoyed on your table and that will sell at good prices if you grow for market.

We offer strong plants of Blizzard King at \$2.00 a dozen; \$6.00 for 50 plants or \$10.00 for 100 plants, postpaid. 500 plants for \$40.00; 1000 plants for \$75.00 by express.

No. 999 Giant Everbearing Strawberry

By setting a bed of our No. 999 Giant Everbearing Strawberry plants in the spring you can have the great pleasure of picking big, red, ripe strawberries all through the summer and fall months of the same year plants are set. Think of it, from these plants you can figure on picking ripe strawberries in quantities as quickly as you can grow ordinary garden stuff like peas, beans, etc. In other words, from plants set in April or May you will start picking ripe strawberries the latter part of July and continue picking all through August, September and October, until stopped by the first hard freeze. The ordinary light frosts do not hurt the berries.

During the past 19 years we have tested out every variety of Everbearing Strawberries that we have heard of and at same time we have been breeding and selecting new varieties of our own origination, with wonderful success. We have discarded a lot of the older varieties like Superb, Americus, Productive, Autumn, Progressive, Champion, Mastodon, etc. and only list those varieties that we have found will succeed and grow big crops of high quality berries under ordinary soil and weather conditions. Everbearing Strawberry plants are scarce this season, there being a short crop of plants over a large part of the country.

We have a very fine stock of new plants of Number 999 Giant and offer this variety as being the very best for home garden or commercial planting.

This wonderful variety did not just happen, like Topsy, in Uncle Tom's Cabin, but was the result of years of labor in breeding and was selected from eighty thousand seedlings by our Mr. Charles F. Gardner, who spent the best years of his life in the work of originating and improving the Everbearing Strawberry. Berries of Number 999 Giant are large, often measuring up to 5½ inches around. They have a beautiful bright red color and a flavor and fragrance different from any strawberry you have ever tasted. In this respect they are like Red Gold for as you bite into one of the big fellows you can easily imagine you are eating a new fruit, with the combine flavors of a rich, spicy cantaloupe mixed with the luscious juiciness of a well ripened peach with that tantalizing wild strawberry flavor predominating over all. Talk about your strawberry shortcakes. Here is where Number 999 shines, and think of it, from plants set out this spring you can be picking these luscious, big berries for shortcakes and for table use all through the summer and fall months of some year plants are set. The plants of Number 999 Giant are strong growers with splendid, deep root system, often going down into the ground to a depth of from 12 to 15 inches, enabling them to keep on bearing through hot, dry times. The leaves have a bright, clean tinge of bluish green color that is practically rust proof. Our best ten beds of Number 999 Giant plants, each measuring a rod square, and grown in different parts of the United States, yielded an average of 186 pints of berries to each rod square bed, the same year plants were set, or at rate of 14880 quarts per acre, which at average price of 20 cents comes to \$18.60 per square rod of ground, and \$2976.00 for a full acre.

Gardner's Number 999 Giant plants with Mulch Paper (see page 23) make an ideal combination. No weeds or grass and no hoeing or cultivating after plants are set. The action of the sun on the paper causes the plants to start



A group of Great Plains Horticulturists, including the Profs. of Horticulture from Agricultural Colleges of the Middle West and Canada, in a field of our Giant Everbearing Strawberries on August 12th.

vigorous growth, and they commence fruiting inside of 60 days and continue to bear big loads of large, red luscious berries all through the summer and fall months. The paper holds the moisture in the soil so plants are not affected by the hot, dry, summer weather conditions. They will also produce an extra crop in late fall, as the paper keeps the ground warm and prevents injury to blossoms by early frost.

Owing to the unfavorable growing season last year all varieties of Everbearing Strawberries made a light stand of plants and there will not be enough of them to supply the demand. Number 999 Giant being a vigorous grower made a fair stand of extra fine plants, which we offer for spring 1931 shipment as follows: \$2.00 a dozen; \$3.00 for 25; \$5.50 for 50 and \$10.00 for 100, all prepaid.

New Hybrid Everbearing Strawberries

We have been breeding the Everbearing Strawberries for the past 20 years and have had wonderful success in originating new varieties. In our testing fields we have 15 new varieties of Everbearing Strawberries now in their 9th year of testing, that were originally selected from over a hundred thousand seedlings grown from various crosses we had made. These new varieties are simply wonderful and should you happen to be near Osage any time during the summer or fall seasons we give you a cordial invitation to come and see them in fruiting.

This year we are reserving all plants of these new Everbearing varieties for our own setting and so will have none for sale until Spring 1932.

Other Small Fruits and Garden Roots

REDPATH-LATHAM RED RASPBERRY. This is the largest and by far the best Red Raspberry we have ever grown. We have often times picked five of these berries that made a solid row across a quart berry box. Berries are firm, hold together well, good color and excellent quality. Very hardy, plants set in spring will usually bear a fall crop, ripening in September. 50 cents each; \$3.50 a dozen, postpaid; \$10.00 per 100; or \$60.00 a 1000, by express or freight collect.

SNYDER BLACKBERRY. A very hardy blackberry that bears heavily in all parts of the country. Berries of large size and very sweet. Always sell at high prices on market. 20 cents each; \$1.50 per dozen, postpaid; \$6.00 per 100, by express or freight collect.

CONCORD GRAPES. The standard black grape. A few vines growing in your garden will bear you bushels of fine quality grapes. Strong two-year-old vines, 35 cents each; \$3.00 per 10, postpaid; \$25.00 a 100, by express or freight collect.

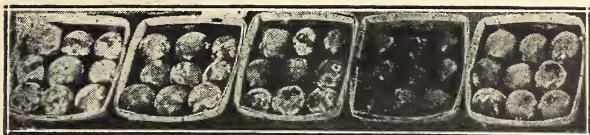
BETA GRAPE. A new type of Hardy Wine Grape that is absolutely hardy and requires no winter protection even in the far north. Grape medium size in compact bunches, very sweet when fully ripe. Fine for growing along fence line, on porches or along side of buildings. Strong two-year-old, bearing vines that will fruit this summer. 50 cents each; \$4.00 per 10, postpaid; \$30.00 per 100, by express or freight collect.

ASPARAGUS. Have you a good asparagus bed? You will certainly enjoy having plenty of this delightful, early spring vegetable fresh for the table and for canning. We send plain cultural directions with each shipment.

MARTHA WASHINGTON ASPARAGUS. New rust proof variety coming rapidly to the front. Large light green stalks, pure white when bleached. Two-year-old plants, 60 cents a dozen; 50 for \$2.00, postpaid; 100 for \$3.00; 1000 for \$15.00, express or freight collect.

RHUBARB, (Pieplant). Deserves to be ranked among the best early products of the garden. You will enjoy having fresh pieplant pies and sauce from your own garden. Strong two-year-old roots, 25 cents each; 10 for \$2.00; 100 for \$10.00, all by express or freight collect.

Varieties: Giant, Myatt's Linneas, Red Wine, all good.



**YELLOW
GOLD**

**JAPAN
HYBRID**

**CAPT.
GARDNER**

**DESSERT
BLUE**

**JAPAN
HYBRID**

HARDY ORCHARD FRUITS

Shipped by express or freight collect

PLUMS

Our Plum trees usually bear a good crop the second year after planting, and we know of no fruit that will give better returns for the money expended than do the new types of Native Plums. Our trees are all grown by the best propagating method, on hardy stocks which were raised from seed gathered from northern grown trees. One such tree is worth ten grown on tender stocks. Many Plum trees, both in nursery and orchard, were root-killed south of us last winter—we did not lose a tree. It will pay you to buy the best.

YELLOW GOLD. Our largest yellow plum measuring up to 6½ inches around. A very fine fruit with flesh of golden yellow, firm and meaty, and with an elusive flavor somewhere between a high quality plum and peach. Trees, 5 to 6 feet, \$2.50 each; 1 to 2 feet, \$1.50 each.

CAPT. GARDNER. Color red turning to blue when fully ripened. Flesh meaty and of most excellent quality. Fruits measure up to 6 inches around. Trees, 5 to 6 feet, \$2.50 each; 1 to 2 feet, \$1.50 each.

DESSERT BLUE. Our best dessert plum. Fruits run from 4 to 5 inches around, dark blue in color. Flesh very tender and meaty, with reddish streaks and very sweet. Trees, 5 to 6 feet, \$2.50 each; 1 to 2 feet, \$1.50 each.

JAPAN HYBRIDS. These Hybrids are the result of 40 years in plum breeding. Grown from hand picked fruits from our best named varieties. Each tree different. Some will bear yellow plums, others red and blue with all shades between. Trees, 4 to 5 feet, \$1.50 each.

NEW MINNESOTA AND SOUTH DAKOTA PLUMS

These new plums were originated on the State Breeding Experimental Farms. We have the following varieties growing and fruiting in our orchards. They will please you as they grow and fruit on your place. Prices for trees, 3 to 5 feet, all varieties, 75 cents each.

UNDERWOOD. Large, early, red plum.

MONITOR. Large, yellow fleshed plum, with mottled skin.

STELLA. Medium late; greenish yellow, turning to red.

WANETA. Large red plum, showing strong Japanese type.

KAHINTA. Good mate to Waneta but a little later ripening.

KIOWA. Good quality, heavy bearer of medium large plums.

SAPA, HANSKA, and OPATA. The cherry-plum type.

APPLES *The King of Fruits.*

There is no state or territory in which they cannot be grown with success. Out of 150 varieties growing on our grounds, we select only the following sorts which we can recommend for general planting, feeling sure that they will give the best satisfaction either for the commercial orchard or for the home garden. No farm should be without its orchard.

Varieties: Duchess, Yellow Transparent, Wealthy, Northwestern Greening, Jonathan, Delicious, Whitney.

Apple trees, 4 to 5 feet, 60 cents each; \$5.00 for 10; \$45.00 for 100.

CHERRIES

Our stock of cherries consists of the best of the old and newer varieties. Where to plant. The Cherry thrives best on a sandy or gravelly soil, but will do very well in almost any situation except a wet one. It is one of the most ornamental of fruit trees, and very desirable for planting near the dwelling, where beauty and shade, as well as fruit, are wanted.

Varieties: Early Richmond, Dyehouse, Montmorency.

Cherry trees, 3 to 4 feet, 75 cents each.

PEARS

A few hardy Pear trees should be in every garden as far north as Northern Iowa. Our trees are the hardiest that can be grown and will be found to give satisfaction.

Varieties: Keiffer, Bartlett, Vermont Beauty and Seckel. Patton, a new pear originating at Charles City, Iowa, \$2.00 each.

Pear trees, 4 to 5 feet, 75 cents each.

PEACHES

Our Peach trees are the finest that can be grown, and they will thrive and bear fruit when planted in territory from Southern Iowa, south.

Varieties: Elberta, Hale, Champion, Bokhara and Crosby.

Peach trees, 3 to 4 feet, 50 cents each.

Shade and Ornamental Trees

You can get a lot of pleasure, and at the same time add greatly to the beauty and value of your home, by a judicious planting of hardy Shade Trees, Shrubs, Perennials, Hedge Plants, etc. On the ordinary Home Grounds the proper places for setting what are generally known as Landscape Shrubs are: foundation planting plots, clump effects, single specimens, perennial groups along walks and driveways, evergreens and shade trees for along lot line and street, with hedge plants on street, driveways or division line, and climbing vines for porch or trellis.



Clark E. Gardner and Major standing under a Mountain Ash, the great bird food tree.

MOUNTAIN ASH. A splendid, quick growing shade tree, suitable for street, lawn and cemetery. Grows quickly into a beautifully shaped head as shown in the photograph. Trees are loaded with clusters of fragrant white flowers in May, which later turn into bunches of beautiful bright red berries. These berries are greatly relished by the birds, so if you want to help feed our little feathered friends and at the same time have one of the best Ornamental Trees growing on your place, then plan to set freely of Mountain Ash.

A row along the street makes a planting that will attract everyone who comes near. When set on lawn or cemetery, either in single specimens or in groups, the effect is very pleasing. We grow these beautiful trees in large numbers and can supply you in all sizes at bargain prices, as follows: Mountain Ash, 5 to 6 feet, \$1.50 each; 6 to 8 feet, \$2.00 each; 8 to 10 feet, \$3.00 each.

HORSE CHESTNUT. A novelty in many parts of the country. The rough bark gives this variety a rugged appearance and makes it a very satisfactory tree for lawn, street, park or cemetery planting. The trees bear large clusters of creamy white flowers in late spring, which turn into clusters of nuts ripening in early September. Very Hardy. Trees, 6 to 8 feet, \$3.00 each; 5 to 6 feet, \$2.00 each.

BLACK WALNUT. A very popular variety now being planted for single specimen shade trees, as well as for lumber and growing of nuts. Grows rapidly and makes a beautiful tree with very wide spread of top. The finely cut composite leaves, give the Black Walnut a tropical appearance although the tree is an iron clad for hardness. Trees, 6 to 8 feet, \$2.00 each; 5 to 6 feet, \$1.50 each; 4 to 5 feet, \$1.00 each.

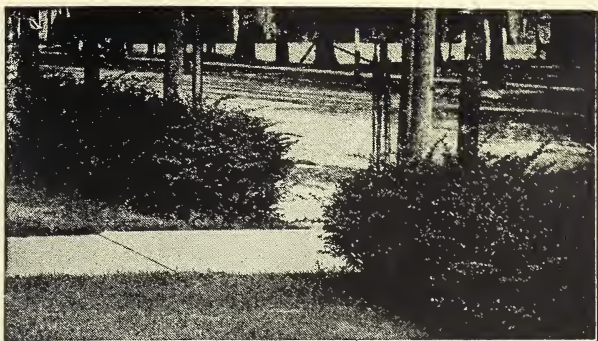
WHITE BIRCH. A white barked ornamental tree of great value for contrast in Landscape plantings. A hardy variety, fast grower and a good all-around, long lived tree. Trees, 6 to 8 feet, \$2.50 each; 5 to 6 feet, \$2.00 each.

AMERICAN ELM. One of the most stately of our native trees. Well suited for any location where a large tree is wanted. Trees, 6 to 8 feet, \$1.50 each; 5 to 6 feet, \$1.00 each.

CHINESE ELM. This new shade tree seems to be making good in all parts of the United States. A very rapid growing tree, with smaller leaves than any of our native Elms, and with its habit of branching thickly makes a densely headed tree of great beauty. Trees, 3 to 4 feet, \$1.00 each; 2 to 3 feet, 75 cents each; 1 to 2 feet, 50 cents each.

BOLLEANA POPLAR. This is a rapid growing, columnar tree with silvery foliage and we recommend it strongly for street, lawn, park or cemetery planting. Trees, 6 to 8 feet, \$2.00 each; 5 to 6 feet, \$1.50 each.

NORWAY POPLAR. An improvement on the Carolina Poplar and has taken the place of this once popular variety. Very rapid growing tree and succeeds in all parts of the United States. Trees 6 to 8 feet, \$1.00 each; 5 to 6 feet, 75 cents each.



JAPANESE BARBERRY—The most popular Hedge Plant grown.

CATALPA BUNGEI. Commonly called the Umbrella tree on account of the top growing into the shape of an opened Umbrella. The large, dark green leaves make a beautiful effect and the trees will fit in with any sort of landscape planting. Stems, 5 to 6 feet, \$2.00 each; 4 to 5 feet, \$1.75 each; 3 to 4 feet, \$1.25 each.

SCHWEDLER MAPLE. A very popular variety of Hard Maple, having reddish purple leaves during spring months. Trees, 6 to 8 feet, \$3.00 each; 5 to 6 feet, \$2.50 each.

SILVER LEAF MAPLE. The Soft Maple of the middle west. Trees, 5 to 6 feet, \$1.00 each.

NEWPORT PURPLE LEAF PLUM. A hardy upright growing ornamental variety of plum, having reddish purple leaves with striking, bright red tips. Trees, 3 to 4 feet, \$1.50 each.

WISCONSIN WEEPING WILLOW. A natural weeping willow with spreading limbs and pendulous branches. Its dark green leaves make it stand out in contrast with other trees and give a very beautiful effect. Trees, 5 to 6 feet, \$1.50 each; 4 to 5 feet, \$1.00 each.

LAUREL LEAVED WILLOW. A hardy upright growing Ornamental tree with large dark green leaves making it very attractive in mixed plantings, Trees, 4 to 5 feet, \$1.50 each.

PUSSY WILLOW. Makes a very pretty tree and is much admired on account of the catkins (Pussy Willow Buds) that open in March and April before the leaves come out. Trees, 4 to 5 feet, \$1.50 each.

NIobe WEEPING WILLOW. Another form of Weeping Willow. A very strong, hardy, graceful tree with splendid pendulous or weeping habit of growth. The bark is an attractive golden color. Trees, 4 to 5 feet, \$1.50 each.

RUSSIAN OLIVE. This splendid tree is becoming more and more popular each year. The leaves and twigs are of a silver gray color. The trees bear clusters of very fragrant yellow flowers in late spring followed by grayish white berries. Very desirable for mass planting. Also for hedges and windbreaks. Trees, 4 to 5 feet, \$1.50 each; 3 to 4 feet, \$1.00 each; 2 to 3 feet, 50 cents each.

HACKBERRY. A valuable hardy shade tree of rapid spreading growth. Limbs seldom broken by winds. Somewhat resembles the American Elm in habit of growth. Trees, 5 to 6 feet, \$1.50 each.

FLOWERING SHRUBS AND HEDGE PLANTS

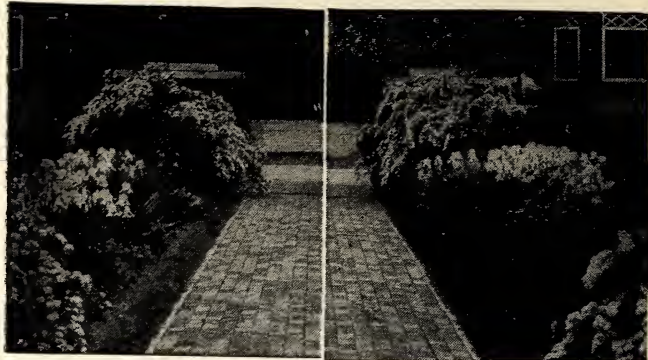
The demand for Flowering Shrubs and Hedge Plants is increasing every year. People are finding out how easy it is to have flowers all through the spring and summer months, by setting an assortment of varieties. These shrubs do not take up much room and do well when set in clumps with several varieties together so as to prolong the blooming season.

Varieties with (†) are adapted for setting for hedges.

BARBERIS THUNBERGI, (Japanese Barberry). (†) Japanese Barberry, recommended by Department of Agriculture, Washington, D. C., is a fast growing hardy shrub attaining the height of 3 to 4 feet if not trimmed. Set 1 foot apart the plants make a dense hedge in short time and may be kept down to any desired height by simply shearing once a year. Also adapted to foundation planting, and for individual specimens and for grouping in landscape plans.

Japanese Barberry bushes have yellow flowers in June, followed by stems of red berries, which remain on plants all winter. The leaves are a bright, snappy shade of green during the growing season, changing to brilliant scarlet and all shades of yellow after first frosts in fall. Our stock of this popular shrub is complete and we offer bargain prices on extra fine plants as follows.

Transplanted plants, 12 to 15 ins., 15 cents each; 10 for \$1.00; 100 for \$8.00. Strong transplants, 15 to 18 ins., 20 cents each; 10 for \$1.50; 100 for \$12.00. Bushy specimens, 18 to 24 ins., 30 cents each; 10 for \$2.50; 100 for \$20.00. Extra fine, 2 to 3 feet, 50 cents each; 10 for \$4.00; 100 for \$35.00.



A planting of Shrubs and Perennials adds greatly to the attractiveness of any home place.

ALPINE CURRANT. (†) A hardy, dense growing shrub, suitable for hedge or mass planting. Small, greenish flowers in April and May. Scarlet fruits. 12 to 18 inches, 50 cents each.

AMOUR PRIVET. (†) A hardy variety of Privet used extensively for hedges. 18 to 24 inches, 25 cents each; 50 for \$10.00; 100 for \$18.00.

ARROWWOOD. An attractive hardy shrub of bush growth with white flowers in May followed by bluish black fruits. 18 to 24 inches, 50 cents each.

BLOODTWIG DOGWOOD. (†) A tall growing shrub of great value on account of its bright red bark on limbs and twigs. Has small white flowers in April and May, which turn later in season into porcelain blue fruits. 2 to 3 feet, 75 cents each.

BUTTERFLYBUSH. A perennial in the Northern States. A rapid grower with vivid green foliage and attractive lilac like flowers. June to October. 18 to 24 inches, 50 cents each.

ELDER BERRY. Hardy native shrub of great value for filling in spaces between shade trees, evergreens, etc. Grows to height of 6 to 8 feet. Is covered with clusters of fragrant white flowers in June, followed by edible, shining, black berries, much used for making pies and fruit juices. We have an extra large berried variety in 18 to 24 inch size shrubs, at 50 cents each.

FLOWERING ALMOND. A very ornamental, low growing shrub the limbs being covered with masses of flowers during April and May. We can supply the white and pink varieties in size 18 to 24 inches, at 50 cents each.

HIGH BUSH CRANBERRY (Opulus.) The old fashioned Cranberry. 18 to 24 inches, 50 cents each.

HONEYSUCKLE, (Tartarian). A tall growing hardy shrub that flowers profusely in May, followed by bright red fruits in Autumn. We have these shrubs in your choice of pink, red, or white flowering, in 18 to 24 inch size, at 50 cents each.

HYDRANGEA. (Aborescens Grandiflora.) This is the everblooming snowball type with large double white flowers. 18 to 24 inches, 50¢ each.

(Paniculata Grandiflora.) A Very hardy shrub with large trusses or showy double white flowers, blending into pink and bronze shades in Autumn, July to October. 18 to 24 inches, 50 cents each.

LILAC (Vulgaris.) The old fashioned Lilac. We have them in white and purple colors. 18 to 24 inches, 50 cents each.

RED LEAVED JAPANESE BARBERRY. (†) A splendid new shrub. Of same habit of growth as the regular Japanese Barberry, but the leaves are of a bright red color. 8 to 12 inch size, 50 cents each.

RUSSIAN OLIVE. (†) Well suited for tall hedge screen effect. Attractive, silver gray leaves and twigs, fragrant yellow flowers in May, followed by grayish white fruits. 12 to 18 inches, 25 cents each; 10 for \$2.00; 100 for \$15.00. For large sizes see under ornamental trees.

SNOWBALL. The well known popular shrub. Blooms profusely, having large double white flowers in May. 18 to 24 inches, 50 cents each.

SNOWBERRY. Attractive green foliage with pink flowers in July followed by clusters of white wax like fruits in Autumn. 18 to 24 inches, 50 cents each.

SPIREA. The Spireas include a number of hardy flowering shrubs much used in landscape plantings. We grow the following varieties:

Anthony Waterer. A valuable dwarf variety, with bright red flowers from June to September. 18 to 24 inches, 50 cents each.

Billardi. A larger growing variety with spikes of pink flowers from June to September. 18 to 24 inches, 50 cents each.

Froebel. Similar to Anthony Waterer, except grows taller and a little brighter colored. Bright pink flowers during May and June. 18 to 24 inches, 50 cents each.

Sorbifolia. A tall growing variety, leaving out very early in spring, showing very attractive foliage, followed by large fluffy heads of white flowers during June and July. 18 to 24 inches, 50 cents each.



A Section of Our Perennial Flower Garden

- Thunbergi.** A low growing variety, with slender spreading branches. Feathery bright green foliage and showy white flowers in early spring. 18 to 24 inches, 50 cents each.
- Van Houtte.** (†) The popular Bridal Wreath. Very graceful in habit of growth. Covered with pure white flowers in May. Much used in Landscape planting. Also good for hedge. 12 to 18 inches, 25 cents each; 18 to 24 inches, 35 cents each; 2 to 3 feet, 50 cents each.
- SUMAC, (Canadensis.)** Aromatic shrub, with small yellow flowers in May, followed with red berries in Autumn. Leaves also color red after frosts. 18 to 24 inches, 50 cents each.
- SUMAC, (Staghorn.)** A rapid growing, odd shaped shrub with branches resembling staghorns. Greenish flowers in dense terminal panicles, followed by clusters of Crimson berries. Leaves turn yellow and crimson in Autumn. 18 to 24 inches, 50 cents each.
- SYRINGA, (Mock Orange.)** A hardy upright growing shrub with loads of pure white, Orange scented flowers in late spring. 18 to 24 inches, 50 cents each.
- TAMARIX.** Grown for its fine graceful foliage and showy panicles of flowers. 18 to 24 inches, 50 cents each.
- WEIGELIA, (Eva Rathke.)** A beautiful hardy shrub producing brilliant crimson flowers in early summer (ROSEA) Similar to Eva Rathke except flowers are of darker shade of pink. 18 to 24 inches, 50 cents each.

CLIMBING SHRUBS AND VINES

- AMPELOPSIS (Engelmanni), Improved Woodbine; (Veitchi), Boston Ivy; (Quinquetolia), American Ivy.** All varieties, 50 cents each.
- BIGNONIA (Radicans.)** Trumpet Creeper, 50 cents each.
- CLEMATIS (Paniculata.)** White, 50 cents each.
(Jackmanii.) Large, purple, \$1.50 each.
- HONEYSUCKLE.** Scarlet Trumpet, 50 cents each.
- KUDZU VINE.** Very rapid growing vine. 20 cents each.
- MATRIMONY VINE.** Purple, 75 cents each.
- WISLERIA.** Purple, 75 cents each.

ROSES

Hardy Field Grown, 2-year Size, 70 cents each

CLIMBING. American Beauty, carmine; Crimson Rambler, deep crimson; Dr. Van Fleet, shell pink; Excelsa, intense crimson; Baltimore Belle, white; Flower of Fairfield, ever blooming Crimson Rambler.

HYBRID PERPETUAL. American Beauty, red; General Jacqueminot, crimson; Magna Charta, rosy pink; Paul Neyron, deep rose; Ulrich Brunner, deep red; Marshall P. Wilder, crimson; Couquette des Alps, white; Black Prince, brilliant red.

POLYANTHA or BABY. Baby Rambler, crimson; Clothilde Soupert, white; Orleans, bright pink; Jessie, bright crimson; Baby Dorothy, pink.

HARDY RUGOSA. F. J. Grootendorst, red; Rugosa Alba, white; Rugosa Rubra, red; Hansa, reddish violet; Sarah Van Fleet, wild rose pink; Sir Thos. Lipton, snow white.

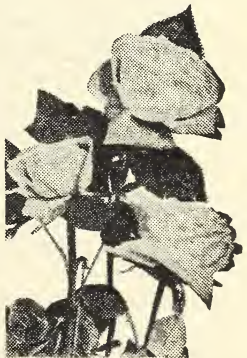
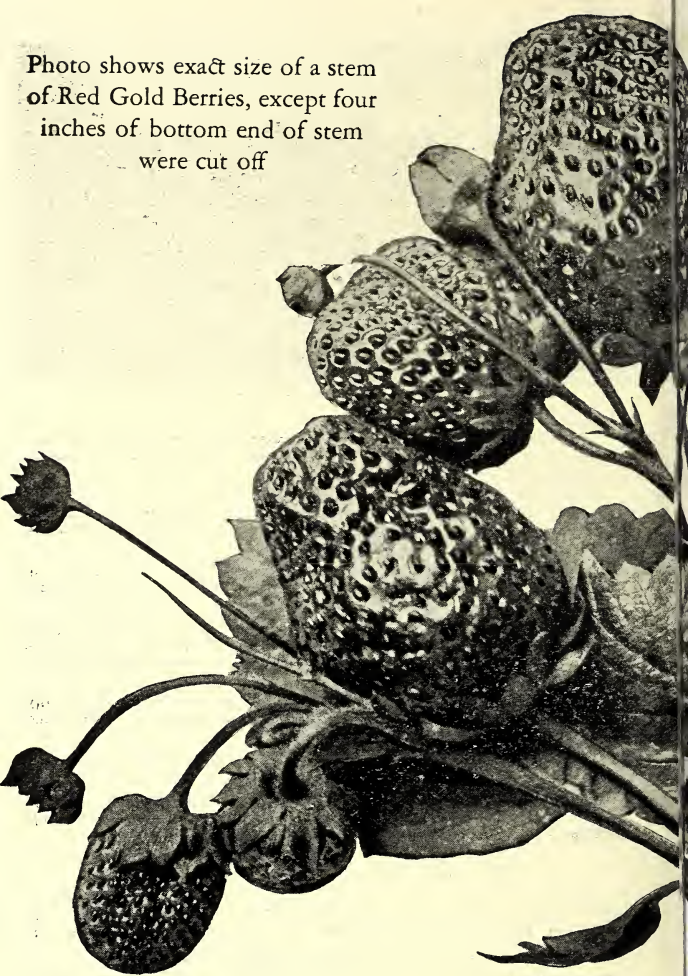


Photo shows exact size of a stem
of Red Gold Berries, except four
inches of bottom end of stem
were cut off



Red Gold Strawberries

The best June-Fruiting Strawberry we have ever grown. Red Gold is the direct result of seventeen years of strawberry breeding carried on by our Mr. Charles F. Gardner, who was one of the pioneer horticulturists of the middle west. It came from crossing our Number 999 Giant Everbearing with the big once a year fruiting Premier. All of the good qualities of both parents are found in Red Gold and additional features which make this variety stand in a class by itself as the greatest profit maker we have ever grown.

Red Gold is a wonderful plant maker, the new runners quickly forming wide matted rows of strong robust plants, with deep penetrating root system, that enables them to thrive during hot dry weather conditions, such as would seriously affect ordinary shallow rooted varieties. The fruit stems are giants in size, growing to height of 10 to 15½ inches and are over double the size of any other strawberry. The photo above shows an ordinary Red Gold fruit stem, exactly life size, except that four inches of bottom end of stem had to be cut off so as to go on this page. This stem shows 22 berries and buds, but it is nothing unusual to find lots of stems with 30 and more berries. Our record stem to date carried 44 berries, buds and blossoms. The stems are so big and strong that they hold the berries up off the ground and makes the picking of Red Gold a pleasure.

The largest Red Gold berry to date measured 8½ inches around, but the average berries like on this fruit stem and in box on page 3, run from 4 to 6½ inches.

They are of a bright shining red color, firm and meaty and filled with that good old fashioned wild strawberry flavor, and so sweet that you save 10 pounds of sugar with every 10 quarts of berries when made in preserves. They are of distinctive shape and hold their size down to last picking. They begin to ripen with Premier, but good picking continues for several days after Premier are gone.

Setting Red Gold plants is like having insurance on your strawberry crop for the fruit stems have so many buds on them and they open over such a long period that a frost or rainy spell during blooming season only catches the few blossoms that are open, leaving plenty to come on and mature a good crop of berries.



REDUCED PRICES FOR SPRING 1931

12 Red Gold plants, postpaid	\$ 1.00
25 Red Gold plants, postpaid	1.50
50 Red Gold plants, postpaid	3.00
100 Red Gold plants, postpaid	5.00
1000 Red Gold plants, by express collect	40.00

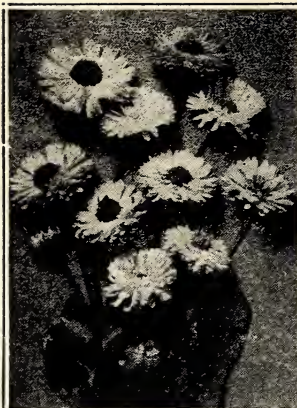
WHAT IS THE FUTURE OUTLOOK FOR STRAWBERRY GROWERS?

The next two or three years will bring big cash profits to the fortunate folks, who grow strawberries for market. The never to be forgotten drowth of summer of 1930 ruined many strawberry plantings and there is sure to be a great shortage of both plants and berries. Some nurseries lost their entire fields and many only have a part stand of plants.

With us here in Northern Iowa, the effect of the drowth was not felt as severely as farther south and east. Our fields, particularly of Red Gold and Blizzard King, made a good stand of plants that went into winter mulched with clean straw and will be in fine condition for digging for spring shipping.

However, we advise early orders, for the demand for plants will be greater than ever before. We already have booked orders for over a quarter of a million plants, of Red Gold; and new inquiries are coming in larger volume each day as the season advances.

One thing we learned from the drowth is to put Peat Humus in with the roots of strawberry plants when setting same, whether a small garden plot or in full acre plantings. The Peat Humus intensifies root growth and also holds the moisture, even during an extreme period of drowth like the one of last summer. Five bushels is minimum amount to use when setting an acre, but ten bushels is still better. See description and prices of "Blizzard Belt" Peat Humus on page 23.



BELLIS (English Daisy)
See next page



PYRETHRUM (Painted Daisy)
See Description

AN ALPHABETICALLY ARRANGED LIST OF OUR
MOST POPULAR VARIETIES OF

Hardy Perennial and Rock Garden Plants

FOR many years we have specialized in growing Hardy Perennials from selected strains of these most popular flowers. The demand for these plants is growing rapidly as more and more Home Builders find how easily they are grown. They fit in with all kinds of landscape plans and add color and beauty to any home place away out of proportion to their cost. When once planted they will grow and bear great loads of brilliantly colored flowers, year after year, with but very little care or attention.

If you are already growing perennials you know of the great pleasure and satisfaction they give, and how each plant seems like an old friend, and you watch their development, year after year, with the most absorbing interest. You are always alert and anxious to secure other varieties to add to your collection and so make new friends that will give you a larger variety. The more you have the greater is your enjoyment.

ROCK GARDENS

The planning and making of a Rock Garden is the most fascinating of all garden activities. One reason for this is that the Rock Garden does not have to be planted at any certain time of the year, nor does it have to be completed at one planting. In fact, the Rock Gardens that are giving their owners the most enjoyment are those that are never completely finished, but where there is always room to add some rare Alpine plant or a new rock of special formation, from time to time. Rock Gardens may vary in size from one which takes but a little corner of the Garden to one covering the entire hillside of some large estate, and each be equally pleasing to its owner.

Rock Garden plants have an (x) following the name.
Heights given are of the plants in bloom.

ACHILLEA, THE PEARL (Milfoil) x. 2 feet. A very white flower that blooms all summer. Suitable for cutting for bouquets. Each, 20 cents; 6 for \$1.00.

ACONITUM, FISCHERI (Monkshood) 30 inches. A dwarf variety with large, pale blue flowers, in September and October. Foliage is very handsome even when not in flower. A very attractive plant for semi-shady location. Each, 20 cents; 6 for \$1.00.

NAPELLUS. 36 inches. Dark blue flowers. Each, 20 cents; 6 for \$1.00.

ALYSSUM, SAXTILE COMPACTUM (Gold Dust) x. 9 inches. A very showy Border or Rock Garden plant greatly prized for its masses of brilliant, yellow flowers during May and June. Each, 20 cents, 6 for \$1.00.

ANTHEMIS, KELWAYI, (Hardy Marguerite). 2 ft. This plant has finely cut foliage and bears a mass of yellow daisy-like flowers during June and July. Each, 20 cents; 6 for \$1.00.



A View in One of Our Perennial Gardens, Showing a Row of Special Strain of Shasta Daisy in Bloom

AQUILEGIA. (Columbine) x. One of the easiest grown and one of the most satisfactory perennials. Comes in a great variety of colors. Very valuable for cutting for Decoration Day use. Very fine for Rock Gardens. We can supply the following very choice varieties:

MRS. SCOTT ELLIOTT'S HYBRIDS x. 2 to 3 ft. Large flowers with long spurs and with a wide color range of most beautiful shades of lavender, blue, mauve, purple, pink, red, etc. Each, 30 cents; 6 for \$1.00.

ROCKY MOUNTAIN COLUMBINE x. 2 to 3 ft. One of the prettiest of our native flowers. Extra good for cutting for Decoration Day. Colors run to bright shades of blue, lavender, pink, etc. Each, 20 cents; 6 for \$1.00.

ROSE QUEEN x. 2½ ft. A beautiful strain of pink and rose colors, with white centers and yellow outers. Each, 30 cents; 6 for \$1.50.

DOUBLE MIXED x. 2 to 3 ft. In this assortment you will get the choicest of the double flowering Columbines. They run in all shades of colors, and are very beautiful. Each 20 cents; 6 for \$1.00.

SINGLE MIXED x. 2 to 3 ft. A very choice assortment of colors in single flowering varieties. All shades of colors. Each, 15 cents; 6 for 50 cents.

ARABIS, ALPINA (Rock Cress) x. 6 inches. A charming dwarf flowering plant, loaded in early spring with pure white flowers, making very pleasing contrasts for use in beds, borders, rock gardens, etc. Each, 20 cts; 6 for \$1.00.

ARTEMISIA, SILVER KING. 2 to 3 ft. A very striking, silvery foliage plant for contrast in flower gardens, and very valuable for use in bouquets during the summer and fall, and also for winter baskets. The plant matures in early summer and quickly hardens so that it can be cut and the silvery stems used without moisture. The foliage does not wilt nor shatter after hardening off, and will keep indefinitely without losing color. Each, 40 cents; 6 for \$2.00.

ASTERS, HARDY PERENNIAL. 3 to 4 ft. These are among the showiest of late flowering hardy plants, giving a wealth of flowers during September and October, just at the time when needed. We offer a fine strain of mixed varieties. Each, 20 cents; 6 for \$1.00.

BABY'S BREATH. See Gypsophila.

BELLIS, (English Daisy) x. Hardy, 6 inches. A low growing perennial that likes a shady spot, but will thrive in almost any place or in almost any kind of soil. Flowers double, and very pretty. We offer plants from a splendid strain of mixed colors. Each, 15 cents; 6 for 50 cents. Photo page 14.

SNOW BALL x. 6 inches. A pure white English Daisy. Each, 20 cents; 6 for \$1.00.

MONSTROSA x. 6 inches. Large, double flowers in pink color. Each, 20 cents; 6 for \$1.00.

BLEEDING HEART. See Dicentra.

CAMPANULA, MEDIUM (Canterbury Bells) x. 2 ft. The regular old-fashioned Canterbury Bells of our grandmother's garden. They are very fine for setting in borders and mixing with other plants. The plant is a biennial, but self-sows so readily that they may be treated as perennials. All colors mixed. Each, 15 cents; 6 for 75 cents. Double flowers, mixed colors. Each, 20 cents; 6 for \$1.00. Separate colors in white, rose, dark blue, and light blue. Each, 20 cents; 6 for \$1.00.

MEDIUM CALYCANTHEMA (Cup and Saucer) x. 2 ft. Large, semi-double flowers resembling a cup and saucer. Mixed colors. Each, 20 cents; 6 for \$1.00. Separate colors in white, rose, and dark blue shades. Each, 20 cents; 6 for \$1.00. See photo-plate on page 16.

CENTAUREA, (Knapweed) x. 3 ft. A fine plant for borders. The flowers are like ragged thistle blooms in bright colors. Each 20 cents; 6 for \$1.00.

CERASTIUM, (Snow in Summer) x. 4 in. A low creeping plant with upper surface of leaves light in colors and woolly. It bears an abundance of pretty white flowers during late spring and early summer. Each, 20 cts.; 6 for \$1.00.



CAMPANULA (Canterbury Bells) DELPHINIUM (Perennial Larkspur)

CHINESE BALLON FLOWER. See *Platycodon*.

CHINESE LANTERN. See *Physalis Franchetti*.

CHRYSANTHEMUM, MAXIMUM (Shasta Daisy). 2 to 3 ft. Very large, white flowers on stout stems and borne in great profusion during summer months. Extra good for cutting. Each, 20 cents; 6 for \$1.00.

ULIGINOSUM (Giant Fall Daisy). 4 ft. Bears loads of white daisy-like flowers during September and October. Makes a fine background plant. Each, 20 cents; 6 for \$1.00.

COLUMBINE. See *Aquilegia*.

COREOPSIS (Tickseed) x. 2 ft. A very popular perennial with flowers of rich, golden yellow. Very fine for cutting. Season, June to October. Each, 20 cents; 6 for \$1.00.

DELPHINIUM (Perennial Larkspur). 3 to 6 ft. One of the most handsome and popular perennials. Will grow in almost any soil or location. We offer a choice strain of mixed colors. Each, 15 cents; 6 for 50 cents.

ENGLISH HYBRIDS. 4 to 6 ft. A very fine strain from Blackmore and Langdon, the English Specialists. Choice colors in single and double flowers. Each 30 cents; 6 for \$1.50.

BELLADONNA. 2 ft. Flowers during June and July. A beautiful shade of turquoise blue. Each, 20 cents; 6 for \$1.00.

DIANTHUS, BARBATUS (Sweet William) x. 2 ft. A splendid border plant, and looks well in solid bed. Colors very rich and varied. We can supply both single and double flowering plants in choice mixture of colors. Each, 20 cents; 6 for \$1.00. See illustration on page 17.

PLUMARIUS (Clove Pinks) x. 6 inches. The old-fashioned, fragrant, Garden Pinks. Splendid for Borders or for Rock Gardens. Mixed colors. Each, 20 cents; 6 for \$1.00. See illustration page 18.

DICENTRA, SPECTABILIS (Bleeding Heart). 2 ft. The old garden favorite, bearing long racemes of graceful heart-shaped flowers. Each, 50 cents.

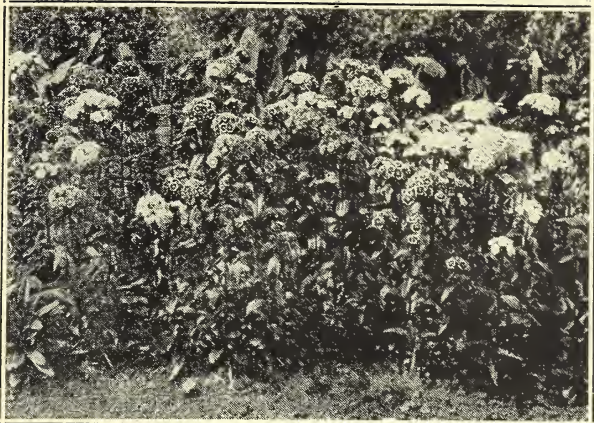
EXIMA (Plumy Bleeding Heart) x. Dwarf, 12 inches. One of the best hardy border plants. Leaves finely cut, and bears racemes of pendent pink flowers continuously throughout the late spring, summer, and fall months. Each, 40 cents; 6 for \$2.00.

DICTAMNUS, ALBA (Gas Plant). 2 to 3 ft. The glossy, leathery, dark green leaves hold their deep coloring until late in fall. Both foliage and flowers are fragrant. Pretty white flowers are borne on spikes 2 to 3 ft. high. The whole plant gives off a strong, pleasant smelling volatile oil which will give a flash of light if a lighted match is held under cluster of seed capsules on a sultry, summer evening. Each, 30 cents; 6 for \$1.50.

DIGITALIS (Fox Glove). 4 to 5 ft. Stately old garden favorites. Choice assortment of colors. Each, 20 cents; 6 for \$1.00. See illustration page 20.

SHIRLEY HYBRIDS. 6 to 7 ft. A special strain with flower heads over 2 ft. long and covered with big bell shaped blossoms. Colors range from white and shell pink to deepest rose. Each, 30 cents; 6 for \$1.50.

FERNS. x. 1 to 3 ft. We can supply the following varieties of Hardy Ferns, suited for setting in partial shady places. Maidenhair Dwarf, Lady Fern, 2 ft.; Ostrich Fern, 3 ft. Each, 20 cents; 6 for \$1.00.



A young bed of *Dianthus Barbatus* (Sweet William) coming into full bloom

FORGET ME NOT. See *Myosotis*.

FOX GLOVE. See *Digitalis*.

FUNKIA (*Plantain Lily*). 1 to 1½ ft. A very ornamental perennial bearing graceful lily like flowers of blue color from July to late September. Each, 20 cents; 6 for \$1.00.

VARIEGATA. Same as above except leaves are striped their full length with white, making a very pretty effect. Each, 30 cents; 6 for \$1.50.

GAILLARDIA (*Blanket Flower*). 2 ft. One of the most desirable perennials. Comes into flower in June and continues a mass of bloom through entire summer and fall. The bright red and yellow shades make them a valuable addition to any garden. Each, 20 cents; 6 for \$1.00.

GEUM (*Avens*) x. 2 ft. This very attractive perennial belongs to the *Rose* family. The plants are very free flowering and are much prized for cutting.

LADY STRATHEDEN. Flowers of a delightful golden yellow.

MRS. BRADSHAW. Double orange-scarlet blooms.

Either variety. Each, 30 cents; 6 for \$1.50.

GYPSOPHILA, PANICULATA (*Baby's Breath*). 2 to 3 ft. Bears an abundance of small, white flowers on branched stems, so thick as to give a lace-like effect. Much used for summer cutting, and also for drying for winter bouquets. Each, 30 cents; 6 for 1.50.

REPENS (*Dwarf Baby's Breath*) x. 6 inches. A beautiful trailing plant for Borders and Rock Gardens. Clouds of small white and pink flowers in July and August. Each, 30 cents; 6 for \$1.50.

GRASSES, ORNAMENTAL. This is a very interesting and valuable group of Hardy Perennial plants, suited for growing in beds, borders and with flowering plants for contrast. The plumes and seed pods are nice for summer bouquets and they also cure easily for use in winter bouquets.

EULALIA JAPONICA (*Zebra Grass*). 6 to 10 ft. The long blades of this grass, marked as they are with broad yellow bands across the leaves, make it very attractive for specimen planting on lawns. Each, 30 cents; 6 for \$1.50.

PHALARIS ARUNDINACEA (*Variiegated Ribbon Grass*) x. 18 inches. Leaves striped the long way with white. Very ornamental. Each, 30 cents; 6 for \$1.50.

ERIANTHUS RAVENNAE (*Plume Grass*). 5 to 7 ft. A very beautiful Ornamental Grass producing 30 to 50 flower spikes closely resembling the Pampas Plumes. Each, 30 cents; 6 for \$1.50.

HEMEROCALLIS, FLAVA (*Lemon Lily*) x. 3 ft. A very showy perennial bearing lily like flowers of beautiful lemon yellow color and very fragrant. Very fine for cutting for Decoration Day. Each, 20 cents; 6 for \$1.00.

HOLLYHOCKS, ALTHEA ROSEA. 6 to 8 ft. There have been great developments in this fine old-fashioned flower. New combinations of colors in both double and single varieties make them very attractive for clumps and background planting. We have splendid strains in both the double and single flowers. Take your choice. Each, 20 cents; 6 for \$1.00.

HELIANTHEMUM, MUTABILE (*Rock Rose*) x. 8 to 12 inches. Splendid for Rock Gardens and Borders. A low growing evergreen plant, forming large clumps, completely covered with flowers during July and August. Pale rose, changing to lilac, then to white. Each 20 cents; 6 for \$1.00.



Dianthus Plumarius (Clove Pinks) **Myosotis (Forget-Me-Not)**
Two Splendid Rock Garden Subjects

IRIS GERMANICA, *German Iris*

Probably the most popular of all of our hardy plants. They are very easily grown, and the marvelously delicate markings of the flowers make them deservedly a general favorite. We can supply the following very fine varieties:

- AMBASSADOR. 4 ft. A fascinating, smoky, velvety purple color on up-right petals, with purple-maroon falls. Each, \$1.00.
- CAPRICE. 3 ft. Color reddish purple. Each, 20 cents; 6 for \$1.00.
- CYANEA. 12 ins. Dwarf, deep velvety blue. Each, 15 cents; 6 for 75 cents.
- FAIRY. 2½ ft. White and light blue. Each, 20 cents; 6 for \$1.00.
- GERTRUDE. 3 ft. Strong violet blue. Each, 15 cents; 6 for 75 cents.
- INGEBORG. 2½ ft. Pure white. Each, 30 cents; 6 for \$1.50.
- IVORINE. 3 ft. Ivory and gold. Each, 50 cents; 6 for \$2.00.
- JOSEPHINE. 12 inches. Dwarf, white. Each, 20 cents; 6 for \$1.00.
- JUNIATA. 2 to 3 ft. Clear blue. Each, 20 cents; 6 for \$1.00.
- LOHENGRIN. 2 to 3 ft. Large, pink, silvery mauve. Each, 50 cents.
- LORELEY. 2½ ft. Yellow and blue. Each, 20 cents; 6 for \$1.00.
- MAORI KING. 3 ft. Golden yellow and maroon. Each, 35 cents.
- MONSIGNOR. 3 ft. Lasting, violet and purple crimson. Each, 25 cents.
- MME. CHEREAU. 3 ft. White edged with blue. Each, 20 cents; 6 for \$1.00.
- MRS. HORACE DARWIN. 2 to 3 ft. Clear waxy white and violet. Each, 30 cents.
- PALLIDA. 2½ ft. Large, purple. Each, 20 cents; 6 for \$1.00.
- PLUMERI. 2½ ft. Coppery, rose claret. Each, 30 cents; 6 for \$1.50.
- POCAHONTAS. 2½ ft. Pure white with blue border. Each, 30 cents; 6 for \$1.50.
- PURPLE QUEEN. 2½ ft. Large, deep purple. Each, 20 cents; 6 for \$1.00.
- VIOLACEA. 2½ ft. Grand large rich violet blue. Each, 30 cents; 6 for \$1.50.

IRIS KAMPFERI (Japanese Iris) x. 2 ft. The last of the Iris Species to bloom and the most beautiful. Our plants are grown from seed imported from one of Japan's specialists in Iris culture. Flowers flat and wide of all shades of colors, mixed. Each, 30 cents; 6 for \$1.50.

LEMON LILY, See Hemerocallis.

LILY-OF-THE-VALLEY, 8 inches. An old-fashioned flower that is gaining in favor from year to year. The stems of fragrant, creamy white flowers are very dainty. Each, 20 cents; 6 for \$1.00.

LIATRIS, PYCNOSTACHYA (Kansas Gay Feather). 4 to 5 ft. If you want something out of the ordinary for tall growing plants you will enjoy this variety. Flowers are purple and borne in dense spikes which continue in bloom for a long time. Foliage thick and grass-like. Each 20 cts.; 6 for \$1.00.

LINUM, PERENNE (Flowering Flax) x. 2 ft. Dainty, sky-blue flowers on graceful arching stems, flowering continuously from May to August. Each, 20 cents; 6 for \$1.00.

MYOSOTIS, ALPESTRIS (Forget-Me-Not) x. The national flower of Belgium. One of the best-liked flowers that we grow. Splendid for Rock Gardens, Borders, and Edgings. We have three varieties. Blue, white, and rose colors. Each, 20 cents; 6 for \$1.00.

ONOTHERA, YOUNGII (Evening Primrose) x. 1 to 2 ft. A strong, stocky, large-leaved plant, with firm, shining foliage, with bright yellow flowers from June to August. Extra good subject for sunny position in the Border or Rock Garden. Each 30 cents; 6 for \$1.50.

PAINTED DAISY, See Pyrethrum.

PANSY. Early Flowering Giant Mixed. This special strain of Pansy will bloom about three weeks earlier than ordinary mixtures. Flowers giant in size with twelve distinct shades of color. Each 10 cents; 6 for 50 cents.



PAPAVER ORIENTALE, *Oriental Poppy*

One of the most popular perennials. The big, flaming scarlet flowers, often 6 to 8 inches across with purple-black throats, fit in and add much color and life to any landscape. We have counted 73 flowers on one large plant. Besides their great value for spreading a mass of color in the garden the flowers are very fine for bouquets. Cut long stems just before the buds open, sear the ends of stems by holding in flame, then put into vases with water and treat as usual and the flowers will open and last for several days. Each, 15 cents; 6 for 75 cents; 12 for \$1.00.

HYBRIDS. Plants from seed of mixed colors. Each, 20 cents; 6 for \$1.00.

PRINCESS LOUISE VICTORIA. A large flowering variety; soft lilac rose color. Each, 30 cents; 6 for \$1.50.

MRS. PERRY. Delicate, salmon-rose, with black blotches. Very fine. Each, 40 cents; 6 for \$2.00.

BRILLIANT. Dark, fiery-red. Each, 40 cents; 6 for \$2.00.

PAPAVER NUDICAULE (Iceland Poppy) x. 1 to 2 ft. A very pretty plant with tuft of fern-like foliage, from which grow cup-shaped flowers of many shades of color, on slender wiry stems, all through the spring, summer and fall months. Each, 20 cents; 6 for \$1.00.

PEONIES

No other flower attracts so much favorable attention as do our Peonies. We have the cream of the varieties in the three main groups of this popular flower.

TENUIFOLIA GROUP: Comes into bloom a week to ten days earlier than the *Officinalis* group. The foliage is finely cut and of a bright green color. Buds show red when flower stems are 8 to 10 inches tall and they continue to grow in size and beauty until flowers are fully opened with stems 20 to 25 inches in height.

DOUBLE RED (Fringe Leaf Peony). Strong 3 to 5 eye divisions. Each, \$3.00; 1 to 3 eye. Each, \$2.00. Very scarce.

SINGLE RED (Fringe Leaf Peony). 3 to 5 eye divisions. Each, \$2.00.

OFFICINALIS GROUP: Comes into blossom about a week later than the *Tenuifolia* varieties.

RUBRA FLORA PLENA. The Decoration Day Peony. Very fine, double, dark red flower. 3 to 5 eye divisions. Each, \$1.00.

ALBA. Double White. Each, \$1.00.

MUTABILE. Double Pink. Each, \$1.00.

CHINESE GROUP: The regular commercial Peonies. Come into flower from one to two weeks later than the *Officinalis* Group.

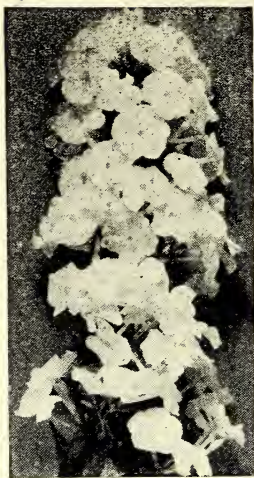
ROSEA. Rose color. Each, 50 cents.

REINE DES ROSES. Violet rose. Each, 75 cents.

FESTIVA MAXIMA. Pure white. Each, 50 cents.

SUPERBA. Bright Pink. Each, 50 cents.

FELIX CROUSE. Brilliant red. Each, 75 cents.



Digitalis (Fox Glove) Phlox (Miss Lingard) Platycodon (Balloon Flower)

PERENNIAL ASTERS. See Asters.

PHLOX. One of the most effective of the Hardy Perennials. Excellent for borders and for filling in open spaces. Flowers are of bright colors and very showy. We list the cream of the newer varieties, as follows:

BRIDESMAID. 2 ft. Pure white, with large crimson eye. Each, 20 cents; 6 for \$1.00.

MRS. JENKINS. 2 ft. Pure white, large blooms. Each, 20 cents; 6 for \$1.00.

R. P. STRUTHERS. 2 ft. Rosy carmine, shaded scarlet. Each, 30 cents; 6 for \$1.50.

RYNSTROM. 2 ft. Beautiful rosy pink. Each, 30 cents; 6 for \$1.50.

ECLAIREUR. 2 ft. Rosy crimson. Each, 30 cents; 6 for \$1.50.

MISS LINGARD. 3 ft. Pure white, fine for cutting. Each, 20 cents; 6 for \$1.00.

SUBULATA (Dwarf Phlox) x. 4 inches. A compact mass of elegant prostrate foliage, with dainty flowers in May and June. We have two colors, white and pink. Your choice. Each, 20 cents; 6 for \$1.00.

PHYSALIS FRANCHETTI, CHINESE LANTERN. 2 ft. An ornamental variety of winter cherry, forming dense bushes, loaded with bright, orange scarlet, lantern like fruits, which are highly prized for winter bouquets. Each, 15 cents; 6 for 60 cents.

PHYSOSTEGIA (False Dragonhead). 3 to 4 ft. Forms large clumps, bearing long spikes of delicate flowers during July and August. We can supply either pink or white. Each, 20 cents; 6 for \$1.00.

PLATYCODON (Chinese Balloon Flower) x. 2 ft. Excellent for Rock Gardens or Borders. Grows quickly into a bushy plant, bearing great loads of flowers, shaped a good deal like the large flowering Clematis. We can supply plants with blue or white flowers. Each, 20 cents; 6 for \$1.00.

PRIMULA, VULGARIS (Yellow Primrose) x. 6 inches. Flowers bright yellow. Fine plant for Rock Gardens and Hardy Borders. Each, 20 cents; 6 for \$1.00.

OFFICINALIS (Yellow Cowslip). 10 inches. Bright yellow flowers. Grows well in partial shade. Each, 20 cents; 6 for \$1.00.

PYRETHRUM (Painted Daisy) x. 2 to 3 ft. One of the most charming perennials, bearing daisy shaped flowers in brilliant colors during May and June, and if flower stems are cut, plants will flower again during August and September. Each, 20 cents; 6 for \$1.00.

RUDBECKIA, PURPUREA (Cone Flower). 6 ft. Reddish purple flowers with large brown cone in center. Valuable for cutting for bouquets as well as for Landscape planting. Each, 20 cents; 6 for \$1.00.

LACINIATA, FLORA PLENA (Golden Glow). 6 ft. A very hardy, tree blooming perennial, bearing large double flowers of a rich orange yellow on long stems suitable for cutting. Each, 20 cents; 6 for \$1.00.

SAPONARIO, OFFICINALIS (Bouncing Bet) x. 2 ft. A splendid Rock Garden plant, thriving in Rocky ground with but little soil. Clusters of white flowers shaded with delicate pink. Each, 20 cents; 6 for \$1.00.

SEDUM STONECROP. The dwarf varieties are much used for sunny places in Rock Gardens. The taller varieties make effective groups of color in borders and beds. We can supply the following varieties:



A Fine Specimen of *Picea Pungen*, Colorado Blue Spruce

- ACRE** x. 3 inches. Leaves bright green, flowers yellow. Each, 20 cents; 6 for \$1.00.
- ALBUM** x. 6 inches Waxy leaves, flowers white. Each, 20 cents; 6 for \$1.00.
- KAMSCHATICUM.** x. 4 inches. Orange yellow flowers. Each, 20 cents; 6 for \$1.00.
- STOLONIFERA** x. 6 inches. Evergreen leaves, flowers pink. Each, 20 cents; 6 for \$1.00.
- SPECTABILE.** 2 ft. Broad, light green leaves with immense heads of handsome, showy, rose colored flowers. Each, 20 cents; 6 for \$1.00.
- SHASTA DAISY.** See *Chrysanthemum Maximum*.
- SOLIDAGO, VIRGO** (Dwarf Golden Rod) x. 10 inches. Especially adapted for Rock Garden planting, where it gives a wealth of golden color during late summer and fall months. Each, 20 cents; 6 for \$1.00.
- SWEET WILLIAM.** See *Dianthus Barbatus*.
- TRITOMA** (Red Hot Poker). 3 to 4 ft. A handsome, showy border plant with flowers borne in compact heads of brilliant, orange-scarlet color. Each, 20 cents; 6 for \$1.00.
- VIOLA** (Tufted Pansies) x. 8 inches. One of the best edging plants for the hardy border or garden. Wide range of colors and blooms continuously from May to October. We offer a choice strain of plants. Each, 15 cents; 6 for 50 cents.
- VIOLET** (Hardy Sweet Scented Everblooming) x. 8 inches. A few years ago we imported this variety from Germany. Plant is hardy and bears loads of good sized reddish purple flowers from spring until fall. Very sweet scented. A splendid plant for beds and borders and for potting for winter blooming indoors. Each, 30 cents; 6 for \$1.50.
- VIOLET** (Hardy Blue Wood) x. 8 inches. Grows well in shady places, under trees, etc. Each, 15 cents; 6 for 50 cents.
- WATER LILY, NYMPHAEA ODORATA MINOR.** The miniature white Water Lily. Very dainty and suitable for tubs and small pools. Each, 50 cents.
- ODORATA.** The native white Pond Lily. Very desirable for planting in quantity in ponds for effect and for cut flowers. Each, 50 cents.
- YUCCA** (Adam's Needle). 5 to 6 ft. Broad, sword-like leaves with immense spikes of creamy white flowers. Each, 20 cents; 6 for \$1.00.

EVERGREENS

For many years we have specialized in the growing of Evergreens in the Hardy Varieties that will succeed in all parts of the United States and Canada. We can supply the following varieties and sizes:

- PICEA PUNGENS, (Colorado Blue Spruce.)** The Silver King of the Rocky Mountains. Imagine an ordinary Spruce tree dipped in a silver bath and you have a mind picture of this most beautiful of all Evergreens. A few trees of this variety scattered on your grounds will add dignity and beauty to your Landscape plantings.
- Seedling trees, two-year-old, 2 to 3 inches, 20 cents each; 10 for \$1.50.
- Seedling trees, three-year-old, 3 to 5 inches, 30 cents each; 10 for \$2.00.
- Transplanted trees, 4 to 6 inches, 50 cents each; 10 for \$4.00.
- Transplanted trees, 8 to 12 inches, \$2.00 each; 10 for \$18.00.
- Transplanted trees, 12 to 15 inches, \$3.00 each; 10 for \$25.00.
- Specimen trees, 4 to 5 feet, \$25.00 each.

PICEA EXCELSA,

NORWAY SPRUCE. The best all around Evergreen for windbreaks, ornamental planting, and hedges. Seedling trees, two-year-old, 3 to 5 inches, 15 cts. each; 10 for \$1.00; 100 for \$8.00.

Seedling trees, three-year-old, 8 to 12 ins, 30 cents each; 10 for \$2.00; 100 for \$12.00.

Transplanted trees, 18 to 24 inches, 50 cents each; 10 for \$4.00; 100 for \$37.50.

Choice specimen trees, 2 to 3 feet, \$3.00 each; 10 for \$25.00.

THUJA, AMERICAN ARBOR

VITAE. A very attractive flat leaved evergreen, much used for specimen trees and hedges.

Transplanted trees, 18 to 24 ins., \$1.00 each; 6 for \$5.00.

Globe shaped specimen trees, 2 ft., \$3.00 each.

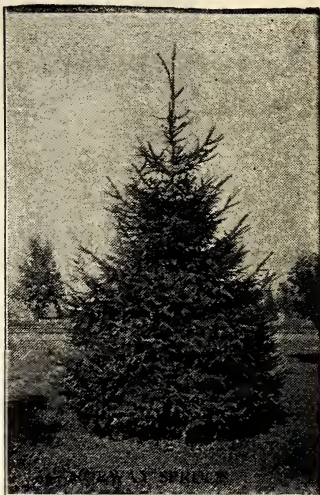
MUGHO DWARF PINE.

This is the Dwarf Pine you see so much in City Parks and in Rock Gardens. Also much used for Foundation Planting. Very hardy and grows to a spread of 6 to 8 ft. across.

Trees, two-year-old, 2 to 4 inches, 25 cents each; 6 for \$1.00.

Trees, three-year-old, 4 to 6 inches, 35 cents each; 6 for \$1.50.

Trees, 6 to 10 inches, 50 cents each; 6 for \$2.50.



Our Company was one of the first to grow Evergreens from seed in a commercial way

GLADIOLUS

A general favorite for the home gardens. Succeeds everywhere and may be depended upon to produce an abundance of beautiful, brilliantly colored blossoms that are extra fine for landscape effect and also for cutting for bouquets. We offer a fine assortment of varieties in vigorous blooming size bulbs as follows:

ALBANIA. Large pure white, round petals. 3 for 35 cents; 10 for \$1.25.

AMERICA. Soft lavender pink, lighter throat. 3 for 20 cents; 10 for 60 cents.

BARON HULOT. Deep indigo blue. 3 for 30 cents; 10 for 75 cents.

BREAK O'DAY. Soft pink flushed with cream. 3 for 60 cents; 10 for \$2.00

DIANA. Brilliant crimson, long stems. 3 for 35 cents; 10 for \$1.25.

MARY PICKFORD. Creamy white, yellow throat. 3 for 20¢; 10 for 60¢

1910 ROSE. Pure deep rose pink. 3 for 20 cents; 10 for 60 cents.

DR. F. E. BENNETT. Peach red, overlaid flame scarlet. 3 for 35¢; 10, \$1.25.

EVELYN KIRTLAND. Warm rose pink. 3 for 20 cents; 10 for 60 cents.

GIANT NYMPH. Light rose pink, 6 tr. stems. 3 for 30 cents; 10 for 75 cts.

HALLEY. Salmon pink with yellow blotch. 3 for 20 cents; 10 for 60 cents.

LEMARECHAL FOCH. Clear light pink. 3 for 20 cents; 10 for 60 cents.

MONA LISA. Pale lavender pink. 3 for 30 cents; 10 for 75 cents.

MRS. FRANCIS KING. Flame red, shaded salmon. 3 for 20¢; 10 for 60¢.

MRS. FRANK PENDLETON. Deep rose pink. 3 for 20 cts.; 10 for 60 cts.

PANAMA. Very large striking pink. 3 for 20 cents; 10 for 60 cents.

PEACE. Nearly white. 3 for 20 cents; 10 for 60 cents.

PRINCEPINE. Beautiful red with white blotch. 3 for 20 cts.; 10 for 60 cts.

ROSE ASH. A new shade of blue. 3 for 30 cents; 10 for 75 cents.

SHEILA. Light coral red. 3 for 30 cents; 10 for 75 cents.

SAMON GLOW. New yellow, shaded orange. 3 for 30 cts.; 10 for 75 cts.

NECTARINE. Choice shade yellow. 3 for 30 cents.

SUPERFINE RAINBOW MIXTURE. This is a very fine mixture containing brilliant colors and will be sure to please you where high grade flowers are wanted for Landscape effect or for cutting. 3 for 15 cents; 10 for 40 cents; 100 for \$3.00.

PLIMULINES HYBRIDS.

ALICE TIPLADY. Bright saffron orange 3 for 20 cents; 10 for 60 cents.

E. H. WILLIAMSON. New, light purple. 3 for 20 cents; 10 for 75 cents.

MING TOY. Showy, deep buff, yellow throat. 3 for 30 cts.; 10 for 75 cts.

ORANGE QUEEN. Apricot color. Very choice. 3 for 30¢; 10 for 75¢.

PRIMULINES Mixture. An extra choice mixture containing all colors. 3 for 15 cents; 10 for 40 cents; 100 for \$2.00.

DAHLIAS

We can supply Dahlia Tubers in assorted colors in maroon, orange, pink, red, purple, yellow and white. Your choice. Each. 20 cents; 3 for 50 cents.

A PERSONAL MESSAGE

Have you some spare funds to place at this time? We can put some extra money at work to good profit and if you would like to consider the matter of having some of your surplus earnings you a good income, and at same time be helping to develop new fruits and flowers and placing them in the gardens of the United States, making homes more attractive and communities better places in which to live, just write your name on back of this slip and I will send you particulars of our PROFIT SHARING NOTES, secured by First Mortgage Bonds and over 60 years of GOOD WILL, with friends and customers in every state, all without obligation to you. Address, Clark E Gardner, Pres., THE GARDNER NURSERY COMPANY, Osage, Iowa.

Gator Hide Mulch Paper

By using this new method of gardening "Without Grass or Weeds," you can greatly increase yields and harvest crops one to two weeks earlier and grow many crops with profit that you cannot mature without the paper.

In ordinary garden use the Mulch Paper is spread between rows of newly planted seed and is fastened down by putting earth along the edges. Plants like Tomatoes, Peppers, etc. are set in openings cut through the paper where plants are to grow. Plants set through Mulch Paper do not wilt. Seeds germinate evenly and from two to five days earlier. Does away with hoeing and cultivating. Holds moisture in ground. Increases growing bacteria. Greatly increases yield. Moves growing season for half tender crops hundreds of miles north.

We can supply Gator Hide Mulch Paper in rolls as follows: 18 inch roll, \$3.50 each; 36 inch roll, \$7.00 each. Type A paper contains 900 lineal feet and the Heavy Weight Type B 450 lineal feet to either width roll. Also can supply the Type B Paper, garden size roll of 45 feet of the 18 inch width for \$1.00



18-in. Full Size Roll, \$3.50

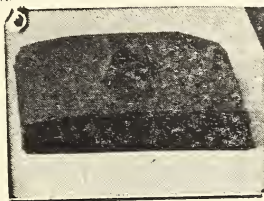
MULCH PAPER SELF ANCHORING SQUARES

We have patents pending on these Squares. They are quickly anchored to the ground, around growing plants, by pushing corners, where scored into the earth. The squares are slit in center and the 18 inch size is also slit to one edge, so as to go around trunks of trees, shrubs, etc. The large size is best for Tomatoes, Peppers, and young Trees and Shrubs.

Prices on Self Anchoring Mulch Paper Squares are as follows:

	Type A	Type B
	per 100	per 100
9x 9 inch squares	\$.75	\$1.50
12x12 inch squares	1.00	2.00
18x18 inch squares	2.00	4.00

50 squares at 100 rates. If shipped by Parcel Post add 12 cents per 100 for 9x9, 18 cents for 12x12; 25 cents for 18x18, Type A Squares. Double these amounts for Type B Squares. Large amounts can be shipped by freight.



100 12x12 Squares



This illustration shows how the Squares are placed around Strawberry plants

DOUBLE CROP PLANT FOOD

An extra fine mixture for Strawberry plants, and all sorts of Garden Truck Trees, Ornamentals, etc. Does not burn like the regular Commercial Fertilizer. Ten pounds to a rod of ground, will work wonders in growth and additional yield of fruits. 5 lbs., \$1.00; ten lbs., \$1.50 postpaid. 25 lbs., \$2.50; 50 lbs., \$4.00; or 100 lbs., for \$6.00 by express or freight collect.

PEAT HUMUS

Our "Blizzard Belt" brand of Peat Humus is a wonderful top dressing to work into the ground around plants, shrubs and trees, to prevent ground from baking. It holds moisture and enables roots to make a vigorous growth, even during seasons of severe drowth.

It is of great value to put in with roots when setting strawberry plants, perennials, trees, shrubs, roses, etc. Just throw a half pint to a quart of peat, depending on size of tree or plant, into the hole with the roots, fill up with good top soil as usual, and plants and trees so treated will make a much better growth than when Peat is not used. It stimulates root growth to a most remarkable degree. A little Peat Humus scattered in trenches along with garden seeds, hastens germination, makes plants grow faster and to mature earlier and insures bumper yields. 2qt. Trial Package, postpaid, 25 cents; one half bushel, postpaid, \$1.00; one bushel, postpaid, \$1.50. Add 10% to these postpaid prices if shipped West of Nebraska, South of Missouri, or East of Ohio. 5 bushels shipped by freight collect, \$2.50; 12 bu. by freight collect \$5.00.

Department Index

Climbing Shrubs and Vines	11	Peat Humus	23
Dahlias	22	Peonies	19
Evergreens	21-22	Perennials	14-15-16-17-18-19-20-21
Garden Roots	6	Phlox	20
Grapes	6	Plant Food	23
Gladiolus	22	Roses	11
Hedge Plants	9	Shade and Ornamental Trees	8-9
Iris	18	Shrubs	9-10-11
Mulch Paper	23	Small Fruits	6
Orchard Fruits	7	Strawberries	3-4-5-6-12-13



C. E. Gardner, with Peter and Peggy in a field of Peony Tenuifolia
The Fringe Leaf Peony. See page 19

OUR LOCATION—Our nurseries are located in the “Blizzard Belt” of Northern Iowa, about 15 miles from the Minnesota State line. We have wide extremes in weather conditions. During the winter the mercury sometimes gets down as low as 40 below zero. In the summer we have the other extreme of hot dry conditions. During the year we get a sample of about every kind of weather that can be found between Maine and California and from Florida to the Canadian line. We find that trees and plants grown under these great extremes in weather conditions have great vitality and are easy to make grow in all parts of the U. S.

TERMS—Cash with order, or where preferred we will ship C. O. D. We guarantee safe arrival of everything we sell, but do not in any way guarantee growth or crop. Should anything we ship you prove to be untrue to name we agree to replace same or to refund purchase price, but are not otherwise responsible. Any trees or plants not growing the first season will be replaced at one-half the original price paid for same.

IN CLOSING—I hope that you have enjoyed looking through this little catalogue; and, incidentally, have found something in it that you can plant with profit on your place. I promise you that any order you may entrust to us will be carefully and intelligently filled and so packed that it will reach you at planting time in the best of growing condition.

Faithfully yours,
CLARK E. GARDNER, Pres.
THE GARDNER NURSERY COMPANY
Osage, Iowa

Below: Peter and Peggy's Happy family of English Bullterriers
The White Aristocrats of Dogdom
Write for prices

