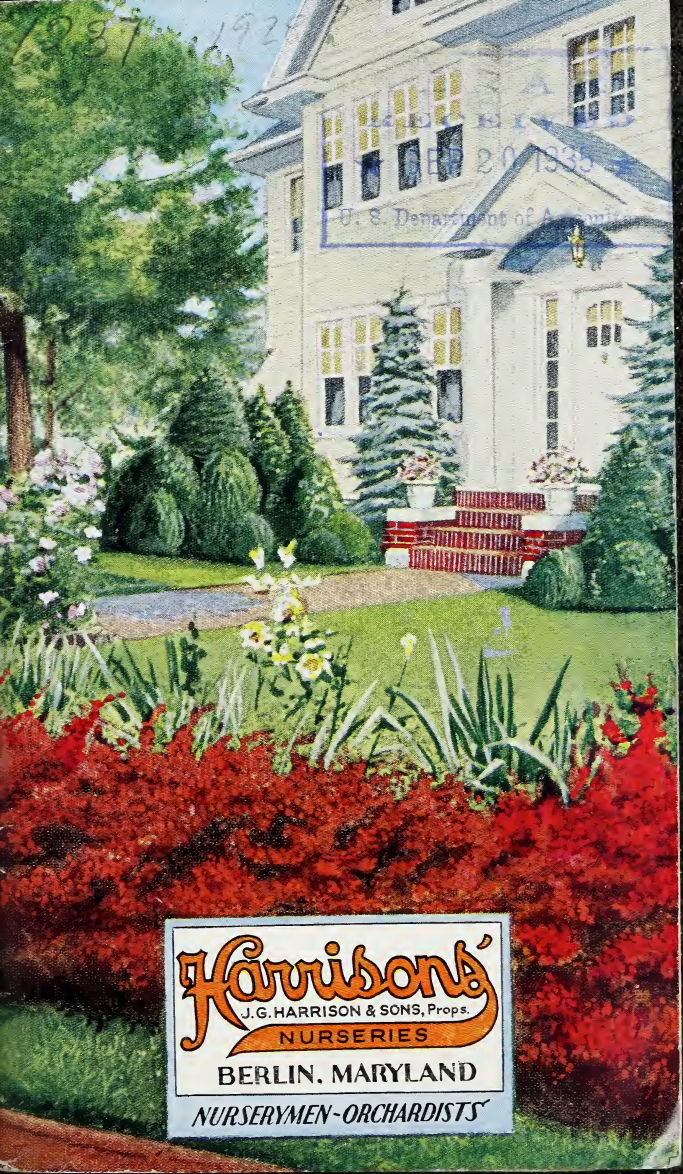


## Historic, archived document

Do not assume content reflects current scientific knowledge, policies, or practices.



1237 1928



U. S. Department of Agriculture  
OFFICE OF PLANT INDUSTRY  
WASHINGTON, D. C.

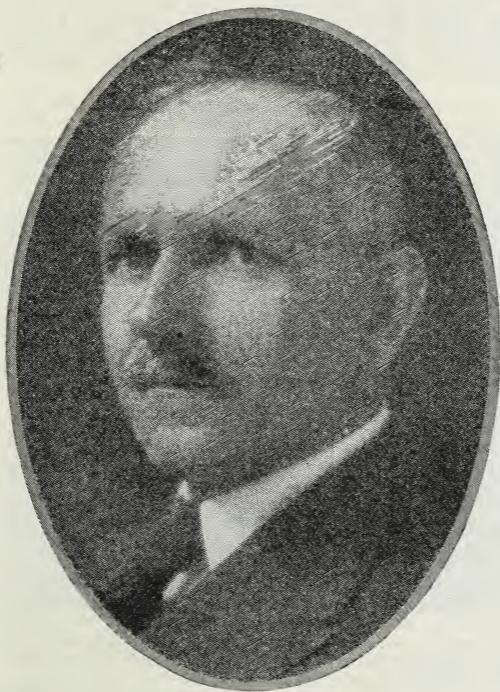
**Harrison's**  
J. G. HARRISON & SONS, Props.  
**NURSERIES**  
**BERLIN, MARYLAND**  
**NURSERYMEN-ORCHARDISTS**



DELICIOUS



ELBERTA



The Late Orlando Harrison

HARRISONS' NURSERIES

BERLIN, MARYLAND

**H**ARRISONS' NURSERIES, J. G. Harrison & Sons, Props., was founded in 1884 at Berlin, Maryland, by the late Joseph George Harrison. His two sons, Orlando Harrison and George A. Harrison, were taken in as partners in 1885 and 1886, respectively, and the splendid growth and huge development of this business was due mainly to the foresight, energy and high integrity of the sons of the founder.

It was found that our soil and climate was particularly adapted to the growth of nursery stock and Harrison grown trees and plants became popular with the planters from the very beginning. On account of the high grade and quality of our products and our fair dealings, with increased sales annually, there was necessitated an annual growth which this business has shown from year to year, and which at the present time comprises several thousand acres, consisting of all kinds of fruit trees, shade trees, evergreens, shrubbery, hedge plants, small fruits, bulbs, and in short, a general line of nursery stock, also one of the largest aggregations of commercial peach and apple orchards in the eastern part of the United States.

The business is now owned and operated by the devisees of the late Senator Orlando Harrison, being G. Hale Harrison, Henry L. Harrison, Orlando Harrison, and John L. Harrison, and also by the heirs of the late George A. Harrison, being Joseph G. Harrison, Burbage Harrison, Mrs. Katherine Harrison Davis, and Mrs. Eunice Harrison Langelier.

We deeply appreciate the business which our old customers have favored us with annually, and to our new and prospective customers, we extend to you a personal welcome to join the ranks of the thousands of satisfied customers throughout the United States and Canada.

The third generation of Harrisons sincerely realize the huge responsibility and pledge themselves individually and severally to the best of their ability to fulfill the traditions of this old established forty-four year old Nursery, and we hope that we may be able to do even greater deeds than our worthy ancestors.

We solicit your patronage and extend a hearty invitation to visit us at any time while on the Eastern Shore of Maryland.

By G. HALE HARRISON,  
Mgr. Sales and Treas.

**HARRISON GROWN EVERGREENS**

All evergreens will be balled and burlapped, that is, carefully dug with the proper amount of soil about the roots and wrapped in burlap which is securely sewed. These prices include this service.

**ARBORVITAE**



American Arborvitae.

**American Arborvitae (Thuja occidentalis)**

The largest seller of all Arborvitae. Erect, pyramidal habit, bright, green foliage, dense from ground up. Rapid grower.

	1 to 9 Ever- greens	10 to 29 Ever- greens
10 to 12 in. ....	\$ .50	\$ .45 each
12 to 15 in. ....	.75	.65 each
15 to 18 in. ....	1.00	.90 each
18 to 24 in. ....	1.40	1.25 each
2 to 3 ft. ....	2.00	1.75 each
3 to 4 ft. ....	3.00	2.75 each
4 to 5 ft. ....	4.50	4.25 each
5 to 6 ft. ....	6.00	5.50 each
6 to 7 ft. ....	8.00	7.25 each

*Buy Direct—Save the Agent's Commission*

**ARBORVITAE (Continued)**

**Berkman's Golden Arborvitae (*Biota aurea nana*)**  
 Dwarf, compact, roundish shape, golden yellow foliage.

	1 to 9 Ever- greens	10 to 29 Ever- greens
6 to 8 in. ....	\$1.00	\$ .90 each
8 to 10 in. ....	1.50	1.35 each
10 to 12 in. ....	2.00	1.75 each
12 to 15 in. ....	2.50	2.25 each
15 to 18 in. ....	3.00	2.75 each
18 to 21 in. ....	3.50	3.25 each
21 to 24 in. ....	4.50	4.25 each

**Chinese Arborvitae (*Biota orientalis*)**

Rather stiff columnar habit, bright green foliage. A very attractive evergreen. See picture on inside of cover.

10 to 12 in. ....	\$ .50	\$ .45 each
12 to 15 in. ....	.75	.65 each
15 to 18 in. ....	1.00	.90 each
18 to 24 in. ....	1.40	1.25 each
2 to 3 ft. ....	2.00	1.75 each
3 to 4 ft. ....	3.00	2.75 each
4 to 5 ft. ....	4.50	4.25 each
5 to 6 ft. ....	6.00	5.50 each
6 to 7 ft. ....	8.00	7.25 each

**Compact Parsons' Arborvitae (*Thuja occidentalis compacta*)**

Almost globe shaped, bright green. Useful in formal planting.

6 to 8 in. ....	\$ .75	\$ .65 each
8 to 10 in. ....	1.00	.90 each
10 to 12 in. ....	1.50	1.35 each
12 to 15 in. ....	2.00	1.75 each
15 to 18 in. ....	2.50	2.25 each
18 to 21 in. ....	3.00	2.75 each
21 to 24 in. ....	3.50	3.25 each
2 to 2½ ft. ....	4.25	4.00 each
2½ to 3 ft. ....	5.00	4.50 each

**Ellwangers or Tom Thumb Arborvitae (*Thuja occidentalis ellwangeriana*)**

Low, broad pyramid with slender branches.

6 to 8 in. ....	\$ .50	\$ .45 each
8 to 10 in. ....	.75	.65 each
10 to 12 in. ....	1.00	.90 each
12 to 15 in. ....	1.25	1.10 each
15 to 18 in. ....	1.50	1.35 each
18 to 21 in. ....	1.75	1.50 each
21 to 24 in. ....	2.25	2.00 each
2 to 2½ ft. ....	3.00	2.75 each
2½ to 3 ft. ....	4.00	3.75 each

*All Evergreens are Freshly Dug Same Day as Shipped. Roots are Balled and Burlapped*



ARBORVITAE (Continued)

Fernlike Arborvitae (*Thuja occidentalis filicoides*)

			1 to 9 Ever- greens	10 to 29 Ever- greens
12	to	15 in.	\$1.75	\$1.50 each
15	to	18 in.	2.25	2.00 each
18	to	24 in.	3.00	2.75 each
2	to	2½ ft.	3.75	3.50 each
2½	to	3 ft.	4.50	4.25 each
3	to	4 ft.	5.50	5.00 each
4	to	5 ft.	6.50	6.00 each
5	to	6 ft.	8.50	7.75 each
6	to	7 ft.	11.00	10.00 each

George Peabody Arborvitae (*Thuja occidentalis lutea*)

Foliage golden yellow and retained well throughout the year. A distinctive lawn plant.

12	to	15 in.	\$1.50	\$1.35 each
15	to	18 in.	2.00	1.75 each
18	to	24 in.	3.00	2.75 each
2	to	2½ ft.	4.00	3.75 each
2½	to	3 ft.	5.00	4.50 each

Globular Arborvitae (*Thuja occidentalis globosa*)

Natural compact globe-shaped. Needs no trimming.

6	to	8 in.	\$.75	\$.65 each
8	to	10 in.	1.00	.90 each
10	to	12 in.	1.50	1.35 each
12	to	15 in.	2.00	1.75 each
15	to	18 in.	2.50	2.25 each
18	to	21 in.	3.00	2.75 each
21	to	24 in.	3.50	3.25 each
2	to	2½ ft.	4.25	4.00 each
2½	to	3 ft.	5.00	4.50 each

Pyramidal Arborvitae (*Thuja occidentalis pyramidalis*)

Narrow, columnar shape, retains bright green coloring throughout the winter. Formal type of evergreen. Best quality of Arborvitae grown.

6	to	8 in.	\$.75	\$.65 each
8	to	10 in.	1.00	.90 each
10	to	12 in.	1.25	1.10 each
12	to	15 in.	1.50	1.35 each
15	to	18 in.	2.00	1.75 each
18	to	24 in.	2.50	2.25 each
2	to	2½ ft.	3.25	3.00 each
2½	to	3 ft.	4.00	3.75 each
3	to	4 ft.	5.00	4.50 each
4	to	5 ft.	6.00	5.50 each
5	to	6 ft.	8.00	7.25 each

We Make a Specialty of  
Car-load Shipments

**ARBORVITAE (Continued)**

**Rosenthal's Arborvitae (*Thuja occidentalis rosenthali*)**

Dense columnar form, slow grower, good green in winter.

		1 to 9 Ever- greens	10 to 29 Ever- greens
15 to 18 in.	.....	\$2.25	\$2.00 each
18 to 24 in.	.....	3.00	2.75 each
2 to 2½ ft.	.....	3.75	3.50 each
2½ to 3 ft.	.....	4.75	4.50 each

**Siberian Arborvitae (*Thuja occidentalis siberica*)**

Light green foliage, broadly pyramidal, very hardy and holds green color during winter.

12 to 15 in.	.....	\$1.75	\$1.50 each
15 to 18 in.	.....	2.25	2.00 each
18 to 24 in.	.....	2.75	2.50 each
2 to 2½ ft.	.....	3.50	3.25 each
2½ to 3 ft.	.....	4.25	4.00 each

**Vervaena Arborvitae (*Thuja occidentalis vervaeneana*)**

Variegated greenish-yellow foliage, broadly pyramidal, hardy.

15 to 18 in.	.....	\$2.25	\$2.00 each
18 to 24 in.	.....	3.00	2.75 each
2 to 2½ ft.	.....	3.75	3.50 each
2½ to 3 ft.	.....	4.75	4.50 each
3 to 4 ft.	.....	6.00	5.50 each

**CEDARS**

**Indian Cedar (*Cedrus deodora*)**

Feathery, blue-green foliage, graceful drooping branches giving stately appearance, not hardy north of Mason-Dixon line.

8 to 12 in.	.....	\$1.50	\$1.35 each
12 to 15 in.	.....	2.00	1.75 each
15 to 18 in.	.....	3.00	2.75 each

**Red Cedar (*Juniperus virginiana*)**

Tall, slender, dark green color.

18 to 24 in.	.....	\$2.00	\$1.75 each
2 to 3 ft.	.....	3.00	2.75 each
3 to 4 ft.	.....	4.00	3.75 each
4 to 5 ft.	.....	5.00	4.75 each
5 to 6 ft.	.....	6.00	5.50 each

**Virginia Blue Cedar (*Juniperus virginiana glauca*)**

Broadly conical form and beautiful glaucous blue foliage makes it one of the choicest Junipers.

12 to 15 in.	.....	\$2.25	each
15 to 18 in.	.....	3.00	each
18 to 24 in.	.....	4.00	each
2 to 3 ft.	.....	5.00	each
3 to 4 ft.	.....	6.00	each
4 to 5 ft.	.....	8.00	each
5 to 6 ft.	.....	10.00	each

## CYPRESS

### Columnar Italian Cypress (*Cupressus sempervirens fastigiata*)

Dark green foliage with light silvery cast. Tall and very slender grower.

	1 to 9 Ever- greens
8 to 10 in. ....	\$1.00 each
10 to 12 in. ....	1.50 each
12 to 15 in. ....	2.00 each
15 to 18 in. ....	2.75 each
18 to 24 in. ....	3.50 each

### Cryptomeria (*Cryptomeria japonica*)

Rapid grower, graceful pyramidal habit.

8 to 10 in. ....	\$1.00 each
10 to 12 in. ....	1.50 each
12 to 15 in. ....	2.00 each
15 to 18 in. ....	2.75 each

### Lobb Cryptomeria (*Cryptomeria japonica lobbi*)

One of the most unusual types of evergreens grown. Very beautiful distinct and always attracts attention. Rare variety—grafted type.

12 to 15 in. ....	\$3.00 each
15 to 18 in. ....	3.50 each
18 to 24 in. ....	4.00 each
2 to 2½ ft. ....	5.00 each
2½ to 3 ft. ....	6.00 each
3 to 3½ ft. ....	7.00 each
3½ to 4 ft. ....	8.00 each

### Glory of Boskoop Cypress

(*Chamaecyparis lawsoniana triomphe de Boskoop*)

Very distinct, silvery blue foliage, attractive, makes an ideal lawn specimen. Very rare variety.

12 to 15 in. ....	\$2.00 each
15 to 18 in. ....	2.75 each
18 to 24 in. ....	3.50 each
2 to 2½ ft. ....	4.50 each
2½ to 3 ft. ....	5.50 each

### Lawson Cypress (*Chamaecyparis lawsoniana*)

Silvery blue foliage, erect grower, broad at base.

8 to 10 in. ....	\$1.00 each
10 to 12 in. ....	1.50 each
12 to 15 in. ....	2.00 each
15 to 18 in. ....	2.75 each

## FIR

### Balsam Fir (*Abies balsamea*)

Regular, symmetrical conical form, dark green leaves, silvery beneath.

		1 to 9 Ever- greens	10 to 29 Ever- greens
18	to 24 in.	\$3.00	\$2.75 each
2	to 2½ ft.	3.50	3.25 each
2½	to 3 ft.	4.25	4.00 each

## HEMLOCKS

### Canadian Hemlock (*Tsuga canadensis*)

An elegant pyramidal tree with drooping branches and delicate dark green foliage. Excellent for lawn purposes, also suited for hedges.

10	to 12 in.	\$1.50	\$1.35 each
12	to 15 in.	2.00	1.75 each
15	to 18 in.	2.50	2.25 each
18	to 24 in.	3.00	2.75 each
2	to 2½ ft.	4.00	3.75 each
2½	to 3 ft.	5.00	4.75 each
3	to 4 ft.	6.00	5.50 each

### Carolina Hemlock (*Tsuga caroliniana*)

Dense, dark foliage, somewhat drooping branches, pyramidal form.

10	to 12 in.	\$1.75	\$1.50 each
12	to 15 in.	2.25	2.00 each
15	to 18 in.	2.75	2.50 each

## JUNIPERS

### Creeping Juniper (*Juniperus horizontalis*)

Branches trail along ground, good for rock work and ground covering.

6	to 8 in.	\$.75	\$.65 each
8	to 10 in.	1.00	.90 each
10	to 12 in.	1.25	1.10 each
12	to 15 in.	1.75	1.50 each
15	to 18 in.	2.00	1.75 each
18	to 24 in.	2.50	2.25 each
2	to 2½ ft.	3.00	2.75 each

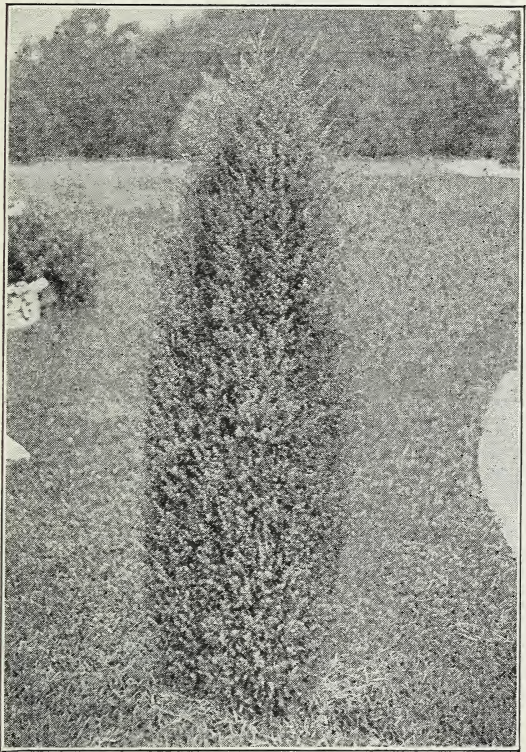
### Golden Juniper (*Juniperus communis aurea*)

Low spreading habit, golden foliage, bright in spring.

6	to 8 in.	\$1.00	\$.90 each
8	to 10 in.	1.25	1.10 each
10	to 12 in.	1.50	1.35 each
12	to 15 in.	2.00	1.75 each
15	to 18 in.	2.50	2.25 each

---

One of America's Largest Growers  
of Evergreens



Irish Juniper.

**Irish Juniper (*Juniperus communis hibernica*)**

Slender, columnar form, compact bluish-green foliage.

Formal type.

			1 to 9 Ever- greens	10 to 29 Ever- greens
10	to 12	in.	\$ .75	\$ .65 each
12	to 15	in.	1.00	.90 each
15	to 18	in.	1.50	1.35 each
18	to 24	in.	1.75	1.50 each
2	to 2½	ft.	2.25	2.00 each
2½	to 3	ft.	3.00	2.75 each
3	to 4	ft.	4.00	3.75 each

**JUNIPERS (Continued)**

**Pfitzer's Juniper (*Juniperus chinensis pfitzeriana*)**

Spiral branches are long and whiplike, dense, very dark green, flat or spreading type. Useful for bare plantings. Most popular low flat type evergreen.

			1 to 9 Ever- greens	10 to 29 Ever- greens
12	to 15	in. ....	\$2.00	\$1.75 each
15	to 18	in. ....	2.50	2.25 each
18	to 24	in. ....	3.00	2.75 each
2	to 2½	ft. ....	4.00	3.75 each
2½	to 3	ft. ....	5.00	4.50 each
3	to 3½	ft. ....	6.00	5.50 each
3½	to 4	ft. ....	7.00	6.50 each

**Savin Juniper (*Juniperus sabina*)**

Handsome, dark green foliage, spreading branches, forming irregular vase-shaped bush. Fine, dwarf ground cover evergreen.

6	to 8	in. ....	\$ .75	\$ .65 each
8	to 10	in. ....	1.00	.90 each
10	to 12	in. ....	1.50	1.35 each
12	to 15	in. ....	2.00	1.75 each
15	to 18	in. ....	2.50	2.25 each
18	to 24	in. ....	3.00	2.75 each
2	to 2½	ft. ....	4.00	3.75 each

**Swedish Juniper (*Juniperus communis suecica*)**

Tall, formal columnar habit, dense, fairly broad foliage, drooping tips, bluish-green, somewhat lighter and bluer than Irish Juniper.

10	to 12	in. ....	\$1.00	\$ .90 each
12	to 15	in. ....	1.50	1.35 each
15	to 18	in. ....	2.00	1.75 each
18	to 24	in. ....	2.50	2.25 each
2	to 2½	ft. ....	3.00	2.75 each
2½	to 3	ft. ....	3.50	3.25 each

**Spiny Greek Juniper (*Juniperus excelsa stricta*)**

Compact, well-shaped pyramid, foliage gray green.

8	to 10	in. ....	\$1.50	\$1.35 each
10	to 12	in. ....	2.00	1.75 each
12	to 15	in. ....	2.75	2.50 each
15	to 18	in. ....	3.50	3.25 each

**Tamarix Savin or Gray Carpet Juniper**

(*Juniperus sabina tamariscifolia*)

Low spreading grayish green foliage.

12	to 15	in. ....	\$1.50	\$1.35 each
15	to 18	in. ....	2.00	1.75 each

*Let Us Landscape Your Home*

JUNIPERS (Continued)

Variegated Spiny Greek Juniper

(*Juniperus excelsa stricta variegata*)

8 to 10 in. ....\$1.75 each

Waukegan Juniper (*Juniperus horizontalis douglasi*)

Dark green foliage—low growing, spreading.

12 to 15 in. ....\$2.00 each

White Leaf Chinese Juniper

(*Juniperus chinensis albovariegata*)

Light bluish foliage with creamy branches. Formal pyramid—useful in low plantings.

12 to 15 in. ....\$2.50 each

PINES

Mugho Dwarf Pine (*Pinus montana mughus*)

Globular form dwarf, short needles.

10 to 12 in. ....\$2.50 each

12 to 15 in. .... 3.25 each

Scotch Pine (*Pinus sylvestris*)

Quick grower, showy reddish bark, silvery green needles.

6 to 8 in. ....\$ .50 each

RETINOSPORAS (*Chamaecyparis*)

Japanese Plume-like Retinospora (*Retinospora plumosa*)

Exceedingly handsome feathery light green foliage.

			1 to 9 Ever- greens	10 to 29 Ever- greens
6	to	8 in.	\$.75	\$ .65 each
8	to	10 in.	1.00	.90 each
10	to	12 in.	1.25	1.10 each
12	to	15 in.	1.50	1.35 each
15	to	18 in.	1.75	1.50 each
18	to	24 in.	2.00	1.75 each
2	to	2½ ft.	2.75	2.50 each
2½	to	3 ft.	3.50	3.25 each
3	to	4 ft.	4.50	4.25 each
4	to	5 ft.	5.50	5.00 each
5	to	6 ft.	7.00	6.50 each
8	to	10 ft.	15.00	13.50 each

RETINOSPORAS (Continued)



Retinosporas.

Japanese Golden Plume-like Retinospora  
(*Retinospora plumosa aurea*)

Golden yellow color, compact habit.			1 to 9 Ever- greens	10 to 29 Ever- greens
6	to	8 in.	.....\$ .75	\$ .65 each
8	to	10 in.	..... 1.00	.90 each
10	to	12 in.	..... 1.25	1.10 each
12	to	15 in.	..... 1.50	1.35 each
15	to	18 in.	..... 1.75	1.50 each
18	to	24 in.	..... 2.00	1.75 each
2	to	2½ ft.	..... 2.75	2.50 each
2½	to	3 ft.	..... 3.50	3.25 each
3	to	4 ft.	..... 4.50	4.25 each
4	to	5 ft.	..... 5.50	5.00 each

Japanese Golden Sawara Retinospora  
(*Retinospora pisifera aurea*)

Bright Golden form, holding its color.				
6	to	8 in.	.....\$1.00	\$ .90 each
8	to	10 in.	..... 1.25	1.10 each
10	to	12 in.	..... 1.50	1.35 each
12	to	15 in.	..... 2.00	1.75 each
15	to	18 in.	..... 2.50	2.25 each
18	to	24 in.	..... 3.00	2.75 each
2	to	2½ ft.	..... 3.75	3.50 each
2½	to	3 ft.	..... 4.50	4.25 each
3	to	4 ft.	..... 5.50	5.00 each



**RETINOSPORAS (Continued)**

**Japanese Sawara Retinospora (*Retinospora pisifera*)**

Light green foliage, bluish beneath. Quick grower, loosely pyramidal.

	1 to 9 Ever- greens	10 to 29 Ever- greens
6 to 8 in. ....	\$1.00	\$ .90 each
8 to 10 in. ....	1.25	1.10 each
10 to 12 in. ....	1.50	1.35 each
12 to 15 in. ....	2.00	1.75 each
15 to 18 in. ....	2.50	2.25 each
18 to 24 in. ....	3.00	2.75 each

**Japanese Sulphur-Tinted Retinospora  
(*Retinospora plumosa sulphurea*)**

Light yellow tips with feathery silver blue background color.

6 to 8 in. ....	\$1.00	\$ .90 each
8 to 10 in. ....	1.25	1.10 each
10 to 12 in. ....	1.50	1.35 each
12 to 15 in. ....	2.00	1.75 each
15 to 18 in. ....	2.50	2.25 each

**Japanese Hinoki Retinospora  
(*Retinospora obtusa*)**

Compact, pyramidal form, slightly drooping tips, beautiful dark green flat foliage.

12 to 15 in. ....	\$2.50	\$2.25 each
15 to 18 in. ....	3.00	2.75 each
18 to 24 in. ....	3.75	3.50 each
2 to 2½ ft. ....	4.50	4.25 each
2½ to 3 ft. ....	5.50	5.00 each

**Japanese Golden Hinoki Retinospora  
(*Retinospora obtusa aurea*)**

Golden flat foliage compact, pyramidal form, slightly drooping tips.

12 to 15 in. ....	\$1.50	\$1.35 each
15 to 18 in. ....	1.75	1.50 each
18 to 24 in. ....	2.00	1.75 each
2 to 2½ ft. ....	2.75	2.50 each
2½ to 3 ft. ....	3.50	3.25 each
3 to 4 ft. ....	4.50	4.25 each
4 to 5 ft. ....	5.50	5.00 each
5 to 6 ft. ....	7.00	6.50 each
6 to 7 ft. ....	9.00	8.25 each

**Japanese Silvertip Retinospora  
(*Retinospora plumosa argentea*)**

Silver tip with light green background color.

12 to 15 in. ....	\$2.50 each
-------------------	-------------

**RETINOSPORAS (Continued)**

**Japanese Thread-like Retinospora**  
(*Retinospora filifera*)

Has long stringy drooping branches, bright green foliage.

		1 to 9 Ever- greens	10 to 29 Ever- greens
18	to 24 in.	\$3.50	\$3.25 each
2	to 2½ ft.	4.00	3.75 each
2½	to 3 ft.	5.00	4.75 each

**Veitch's Japanese Retinospora**  
(*Retinospora squarrosa veitchi*)

Foliage silvery blue, feathery and dense, giving soft woolly appearance. Broad pyramidal outline. One of the best Retinosporas.

6	to 8 in.	\$ .75	\$ .65 each
8	to 10 in.	1.00	.90 each
10	to 12 in.	1.25	1.10 each
12	to 15 in.	1.50	1.35 each
15	to 18 in.	1.75	1.50 each
18	to 24 in.	2.00	1.75 each
2	to 2½ ft.	2.75	2.50 each
2½	to 3 ft.	3.50	3.25 each
3	to 4 ft.	4.50	4.25 each
4	to 5 ft.	5.50	5.00 each
5	to 6 ft.	7.00	6.50 each

**SPRUCES**

**Douglas Spruce (*Pseudotsuga douglasi*)**

Very hardy, dark bluish green color. Conical form with spreading branches.

18	to 24 in.	\$2.50	\$2.25 each
2	to 2½ ft.	3.50	3.25 each
2½	to 3 ft.	4.25	4.00 each
3	to 4 ft.	5.00	4.75 each

**Norway Spruce (*Picea excelsa*)**

A lofty, noble tree of open pyramidal habit, green foliage.

8	to 10 in.	\$ .50	\$ .45 each
10	to 12 in.	.75	.65 each
12	to 15 in.	1.00	.90 each
15	to 18 in.	1.25	1.10 each
18	to 24 in.	1.50	1.35 each

---

*No Planting is Complete  
Without Evergreens*

## YEWS

### English Yew (*Taxus baccata*)

Dense, close branched, with dark green foliage.

8 to 12 in. ....\$1.75 each

### Spreading English Yew (*Taxus baccata repandens*)

Low spreading grower, dwarf, with dark glossy green foliage.

8 to 12 in. spread .....\$1.75 each  
 12 to 15 in. spread ..... 2.25 each  
 15 to 18 in. spread ..... 3.00 each  
 18 to 24 in. spread ..... 4.00 each

### Japanese Spreading Yew (*Taxus cuspidata*)

Spreading type, deep green foliage, very hardy. We recommend for planting near house. One of the most desirable Yews.

	1 to 9 Ever- greens	10 to 29 Ever- greens
8 to 12 in. ....	\$1.75	\$1.50 each
12 to 15 in. ....	2.25	2.00 each
15 to 18 in. ....	3.00	2.75 each
18 to 24 in. ....	4.00	3.75 each
2 to 2½ ft. ....	6.00	5.50 each

### Upright Japanese Yew (*Taxus cuspidata capitata*)

Upright growth, dense green foliage, slow grower.

12 to 15 in. ....\$3.50 each  
 15 to 18 in. .... 4.50 each

## HARRISON GROWN BOXWOOD

### Boxwood (*Buxus sempervirens*)

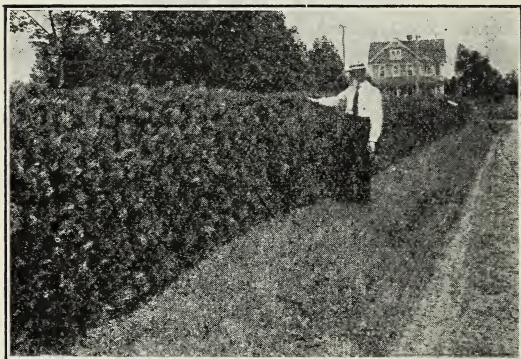
Useful for formal hedges and individual specimens.  
 Compact growth with glossy evergreen leaves.

4 to 6 in. ....	\$ .30	\$ .25 each
6 to 8 in. ....	.40	.35 each
8 to 10 in. ....	.60	.55 each
10 to 12 in. ....	.90	.80 each
12 to 15 in. ....	1.25	1.10 each
15 to 18 in. ....	1.75	1.50 each

---

*Our Climate and Soil With Our Growing Methods  
 Produce America's Finest  
 Evergreens*

BOXWOODS (Continued)



Late Joseph George Harrison, the Founder of  
Harrisons' Nurseries, Along An  
Evergreen Hedge.

**Tree Boxwood** (*Buxus sempervirens arborescens*)

Hardy, quickest growing variety of Boxwood. Loose growing pyramidal shape.

	1 to 9 Ever- greens	10 to 29 Ever- greens
10 to 12 in. ....	\$ .90	\$ .80 each
12 to 15 in. ....	1.25	1.10 each
15 to 18 in. ....	1.75	1.50 each
18 to 24 in. ....	2.25	2.00 each

**Dwarf English Boxwood**

(*Buxus sempervirens suffruticosa*)

This variety has made the Eastern Shore of Maryland famous for old boxwood. Dwarf grower, suitable for low hedges and edgings.

4 to 6 in. ....	\$ .40	\$ .35 each
6 to 8 in. ....	.60	.55 each

*Visit Berlin and Select the Evergreens in the Nursery  
Rows. We Will Dig and Ship or Deliver to  
Your Truck or Car the Same Day*

SHADE TREES  
MAPLES

Norway Maples (*Acer platanoides*)

Most popular and best known shade tree. Green foliage remains until late fall and turns to rich yellow.

			1 to 9 Trees	10 to 29 Trees	30 to 299 Trees
4	to	5 ft. (whips)	\$ 1.00	.....	..... each
5	to	6 ft. (whips)	1.25	.....	..... each
6	to	7 ft. (whips)	1.50	.....	..... each
1	to	1 1/4 in. cal. 7 to 8 ft.	2.25	2.00	1.75 each
1 1/4	to	1 1/2 in. cal. 8 to 9 ft.	3.00	2.75	2.50 each
1 3/4	to	2 in. cal. 9 to 10 ft.	4.00	3.50	3.25 each
2	to	2 1/2 in. cal. 10 to 12 ft.	5.50	5.00	4.50 each
2 1/2	to	3 in. cal. 12 to 14 ft.	7.00	6.50	6.00 each
3	to	3 1/2 in. cal. 14 to 16 ft.	10.00	9.00	8.00 each
3 1/2	to	4 in. cal. 16 to 18 ft.	12.00	11.00	10.00 each
4	to	5 in. cal. 18 to 20 ft.	15.00	14.00	13.00 each
5	to	6 in. cal. 20 ft.	20.00	18.00	16.00 each

Extra Large Size Norway Maples

			1 to 9 Trees
6	to	7 in. caliper or diameter	\$25.00 each
7	to	8 in. caliper or diameter	30.00 each
8	to	9 in. caliper or diameter	35.00 each
9	to	10 in. caliper or diameter	40.00 each

Ash Leaf Maple (*Acer negundo*)

Rapid grower, suitable for seashore.

			1 to 9 Trees	10 to 29 Trees
7	to	8 ft.	\$ .75	\$ .65 each
8	to	10 ft.	1.00	.90 each
10	to	12 ft.	1.50	1.25 each
12	to	14 ft. 1 1/2 in. to 1 3/4 in. cal.	2.50	2.25 each
1 3/4	to	2 in. cal.	3.50	3.25 each
2	to	2 1/2 in. cal.	4.50	4.00 each

Silver Maples (*Acer dasycarpum*)

Tall, stately tree, rapid grower, graceful, leaves silvery underneath.

			1 to 9 Trees	10 to 29 Trees	30 to 299 Trees
3	to	4 ft.	\$ .25	\$ .20	\$ .15 each
4	to	5 ft.	.40	.35	.30 each
5	to	6 ft.	.50	.45	.40 each
6	to	7 ft.	.75	.65	.55 each
7	to	8 ft.	1.00	.90	.80 each
8	to	9 ft.	1.25	1.10	.90 each
9	to	10 ft.	1.50	1.25	1.10 each
10	to	12 ft. 1 1/4 to 1 1/2 in. cal.	2.00	1.75	1.50 each
12	to	14 ft. 1 1/2 to 1 3/4 in. cal.	2.50	2.25	2.00 each
1 3/4	to	2 in. cal.	3.00	2.75	2.50 each
2	to	2 1/2 in. cal.	3.50	3.25	3.00 each
2 1/2	to	3 in. cal.	4.00	3.50	3.25 each

**Schwedler's Red-leaved Maple**

(*Acer platanoides schwedleri*)

Best purplish redleaved large shade tree.

	1 to 9 Trees	
4 to 5 ft. (whips) .....	\$2.00	each
5 to 6 ft. (whips) .....	2.50	each

**Red or Scarlet Maple (*Acer rubrum*)**

Brilliant red autumn color prefers moist soils.

	1 to 9 Trees	10 to 29 Trees	
4 to 5 ft. ....	\$1.00	\$ .90	each
5 to 6 ft. ....	1.25	1.10	each

**Wier's Cut-leaved Maple (*Acer saccharinum wieri*)**

Graceful, drooping tree.

	1 to 9 Trees	
5 to 6 ft. ....	\$2.00	each

**Japanese Maple (*Acer palmatum*)**

Slow growing, beautiful shaped lawn specimen.

18 to 24 in. ....	\$2.50	each
2 to 3 ft. ....	3.50	each

**Japanese Bloodleaf Maple**

(*Acer palmatum atropurpureum*)

Very dwarf, graceful, red foliage. Best color in sunny locations.

15 to 18 in. ....	\$5.00	each
-------------------	--------	------

**ELMS**

**American Elm (*Ulmus americana*)**

A noble native tree of great size and wide spread with vase-shaped head and graceful drooping branches with handsome leaves. We highly recommend the American Elm for plantings on lawns, parks, streets and highways. Every home should have an American Elm.

	1 to 9 Trees	10 to 29 Trees	30 to 299 Trees	
3 to 4 ft. ....	\$ .50	\$ .45	\$ .40	each
4 to 5 ft. ....	.60	.55	.45	each
5 to 6 ft. ....	.75	.65	.55	each
6 to 7 ft. ....	1.00	.90	.80	each
7 to 8 ft. ....	1.25	1.10	1.00	each
8 to 9 ft. 1 to 1¼ in. cal. ....	1.50	1.35	1.10	each
9 to 10 ft. 1¼ to 1½ in. cal. ....	2.00	1.75	1.50	each
10 to 12 ft. 1½ to 1¾ in. cal. ....	3.00	2.75	2.50	each
1¾ to 2 in. cal. ....	4.00	3.75	3.50	each
2 to 2½ in. cal. ....	5.50	5.00	4.50	each
2½ to 3 in. cal. ....	7.00	6.50	5.50	each
3 to 3½ in. cal. ....	10.00	9.00	8.00	each

ELMS (Continued)



American Elm.

Moline Elm (Budded on American Elms)  
(*Ulmus americana molini*)

Grows into a dense, conical specimen.

		1 to 9 Trees
3 to 4 ft.	.....	\$1.25 each
4 to 5 ft.	.....	1.50 each
5 to 6 ft.	.....	1.75 each
6 to 7 ft.	.....	2.00 each

PLANE TREES

American Plane (*Platanus occidentalis*)

Common Sycamore. Fast growing, tall tree.

		1 to 9 Trees	10 to 29 Trees
8 to 10 ft.	.....	\$2.25	\$2.00 each
10 to 12 ft.	1¼ to 1½ in. cal.....	3.00	2.75 each

---

*All Shade Trees Are Freshly Dug at  
Shipping Time*

## PLANE TREES (Continued)



Oriental Plane.

**Oriental Plane (Platanus orientalis)**

Excellent shade tree for park, street and factory uses.  
Quick grower, hardy and thrives in most any soil.

	1 to 9 Trees	10 to 29 Trees	30 to 299 Trees
4 to 5 ft. ....	\$1.00	\$ .90	\$ .80 each
5 to 6 ft. ....	1.25	1.10	1.00 each
6 to 7 ft. ....	1.50	1.25	1.10 each
7 to 8 ft. ....	1.75	1.50	1.25 each
8 to 10 ft. ....	2.25	2.00	1.75 each
10 to 12 ft. 1¼ to 1½ in. cal.....	3.00	2.75	2.50 each



**POPLAR TREES**

**Lombardy Poplars (Populus nigra italica)**

Tall, spire-like tree. Useful for screens and architectural effects. Quick grower.

		1 to 9 Trees	10 to 29 Trees
4	to 5 ft.	\$ .50	\$ .45 each
5	to 6 ft.	.60	.55 each
6	to 7 ft.	.75	.65 each
7	to 8 ft.	.90	.80 each
8	to 10 ft.	1.00	.90 each
10	to 12 ft. 1¼ to 1½ in. cal.	1.40	1.25 each
1½	to 1¾ in. cal.	2.00	1.75 each

**Bolleana Poplar (Populus bolleana)**

Green foliage, silvery underneath, rapid grower.

8	to 10 ft.	\$2.00	\$1.75 each
10	to 12 ft. 1¼ to 1½ in. cal.	2.50	2.25 each
12	to 14 ft. 1½ to 1¾ in. cal.	3.00	2.75 each
14	to 16 ft. 1¾ to 2 in. cal.	3.50	3.25 each

**Carolina Poplars (Populus eugenei)**

Rapid grower, suitable for seashore and dry soils. Has spreading roots.

8	to 10 ft. 1 to 1¼ in. cal.	\$ .60	\$ .55 each
10	to 12 ft. 1¼ to 1½ in. cal.	.80	.70 each
12	to 14 ft. 1½ to 1¾ in. cal.	1.00	.90 each
14	to 16 ft. 1¾ to 2 in. cal.	1.25	1.10 each
2	to 2½ in. cal.	1.75	1.50 each
2½	to 3 in. cal.	2.25	2.00 each
3	to 3½ in. cal.	3.00	2.75 each
3½	to 4 in. cal.	4.00	3.50 each
4	to 5 in. cal.	6.00	5.50 each

**OAKS**

**Pin Oaks (Quercus palustris)**

Best Oak for lawn and street purposes. Graceful, spreading, pyramidal shape, deeply cut leaves, beautiful autumn effect.

2	to 3 ft.	\$ .75	\$ .65 each
3	to 4 ft.	1.00	.90 each
4	to 5 ft.	1.50	1.35 each
5	to 6 ft.	2.25	2.00 each
6	to 7 ft.	3.00	2.75 each
7	to 8 ft. 1 to 1¼ in. cal.	3.50	3.25 each
8	to 9 ft. 1¼ to 1½ in. cal.	4.00	3.75 each
9	to 10 ft. 1½ to 1¾ in. cal.	5.00	4.50 each

*Note Our Complete Assortment*

SHADE TREES (Continued)

Red Oaks (Quercus rubra)

Symmetrical, stately spreading tree, comparatively quick grower. Rich autumn color.

			1 to 9 Trees	10 to 29 Trees
2	to	3 ft.	\$ .75	\$ .65 each
3	to	4 ft.	1.00	.90 each
4	to	5 ft.	1.50	1.35 each
5	to	6 ft.	2.25	2.00 each
6	to	7 ft.	3.00	2.75 each
7	to	8 ft. 1 to 1 1/4 in. cal.	3.50	3.25 each
8	to	9 ft. 1 1/4 to 1 1/2 in. cal.	4.00	..... each
9	to	10 ft. 1 1/2 to 1 3/4 in. cal.	5.00	..... each
1 3/4	to	2 in. cal.	6.00	..... each
2	to	2 1/2 in. cal.	8.00	..... each
2 1/2	to	3 in. cal.	10.00	..... each
3	to	3 1/2 in. cal.	12.00	..... each

White Oaks (Quercus alba)

Stately, broad, open head, with purplish-brown leaves during fall.

2	to	3 ft.	\$ .75	\$ .65 each
3	to	4 ft.	1.00	.90 each
4	to	5 ft.	1.50	1.35 each
5	to	6 ft.	2.25	2.00 each
6	to	7 ft.	3.00	2.75 each
7	to	8 ft. 1 to 1 1/4 in. cal.	3.50	3.25 each
8	to	9 ft. 1 1/4 to 1 1/2 in. cal.	4.00	3.75 each
9	to	10 ft. 1 1/2 to 1 3/4 in. cal.	5.00	4.50 each
1 3/4	to	2 in. cal.	6.00	5.50 each
2	to	2 1/2 in. cal.	8.00	7.25 each
2 1/2	to	3 in. cal.	10.00	9.00 each
3	to	3 1/2 in. cal.	12.00	11.00 each

ASH TREES

Black Ash (Fraxinus nigra)

Rapid grower, suitable for parks and streets.

3	to	4 ft.	\$ .40	\$ .35 each
4	to	5 ft.	.50	.45 each
5	to	6 ft.	.60	.55 each
6	to	7 ft.	.75	.65 each
7	to	8 ft.	1.00	.90 each
8	to	10 ft. 1 1/4 to 1 1/2 in. cal.	1.25	1.10 each
10	to	12 ft. 1 1/2 to 1 3/4 in. cal.	2.00	1.75 each
12	to	14 ft. 1 3/4 to 2 in. cal.	2.75	2.50 each
14	to	16 ft. 2 to 2 1/2 in. cal.	4.00	3.75 each
2 1/2	to	3 in. cal.	5.50	5.00 each
3	to	3 1/2 in. cal.	7.00	6.25 each

White Ash (Fraxinus americana)

Rapid growing native tree for parks and streets.

6	to	7 ft.	\$1.00 each
7	to	8 ft.	1.25 each

SHADE TREES (Continued)

European Mountain Ash (*Sorbus aucuparia*)

Valuable for a small lawn, orange scarlet berries.

5 to 6 ft. ....	\$ .75 each
6 to 7 ft. ....	1.00 each
7 to 8 ft. ....	1.25 each

WILLOW TREES

Babylon Weeping Willow (*Salix babylonica*)

Green leaves, popular weeping variety.

	1 to 9 Trees	10 to 29 Trees
5 to 6 ft. ....	\$1.25	\$1.10 each
6 to 7 ft. ....	1.50	1.35 each

Golden Bark Russian Willow (*Salix vitellina aurea*)

Upright grower.

3 to 4 ft. ....	\$ .60	\$ .55 each
4 to 5 ft. ....	.75	.65 each
5 to 6 ft. ....	1.00	.90 each
6 to 7 ft. ....	1.25	1.10 each
7 to 8 ft. ....	1.50	1.35 each
8 to 10 ft. 1¼ to 1½ in. cal. ....	2.00	1.75 each
10 to 12 ft. 1½ to 1¾ in. cal. ....	3.00	2.75 each
1¾ to 2 in. cal. ....	4.00	3.75 each

Green or Emerald Willow (*Salix viridis*)

Upright grower.

3 to 4 ft. ....	\$ .60	\$ .55 each
4 to 5 ft. ....	.75	.65 each
5 to 6 ft. ....	1.00	.90 each

Golden Bark Weeping Willow  
(*Salix babylonica ramulis aureis*)

2 to 3 ft. ....	\$ .60	\$ .55 each
3 to 4 ft. ....	.75	.65 each
4 to 5 ft. ....	1.00	.90 each
5 to 6 ft. ....	1.25	1.10 each
6 to 7 ft. ....	1.50	1.35 each
7 to 8 ft. ....	2.00	1.75 each

Laurel Willow (*Salix pentandra*)

Shining dark green leaves, suitable for background plantings.

4 to 5 ft. ....	\$ .75	\$ .65 each
5 to 6 ft. ....	1.00	.90 each
6 to 7 ft. ....	1.25	1.10 each
7 to 8 ft. ....	1.50	1.35 each
8 to 10 ft. 1¼ to 1½ in. cal. ....	2.00	1.75 each

Pussy Willow (*Salix discolor*)

Shrub-like tree with furry catkins in early spring.

	1 to 9 Trees
2 to 3 ft. ....	\$ .35 each
3 to 4 ft. ....	.45 each
4 to 5 ft. ....	.60 each

Red Branched Pussy Willow

4 to 5 ft. ....	\$ .75 each
5 to 6 ft. ....	1.00 each

OTHER WELL-KNOWN VARIETIES OF  
SHADE TREES

Catalpa Bungei (Umbrella Tree)

(Special low prices)



Catalpa Bungei (Umbrella Tree)

Umbrella-shaped heads without pruning. Hardy, have large glossy green leaves. Usually planted in pairs on opposite sides of an entrance and walks.

	1 to 9 Trees	10 to 29 Trees
4 to 5 ft. stems, 1 yr. heads .....	\$1.00	\$ .90 each
5 to 6 ft. stems, 1 yr. heads .....	1.25	1.10 each
6 to 7 ft. stems, 1 yr. heads .....	1.50	1.35 each
4 to 5 ft. stems, 2 yr. heads .....	1.25	1.10 each
5 to 6 ft. stems, 2 yr. heads .....	1.50	1.35 each
4 to 5 ft. stems, 3 yr. heads .....	1.50	1.35 each
5 to 6 ft. stems, 3 yr. heads .....	1.75	1.50 each

SHADE TREES (Continued)

Western Catalpa (*Catalpa Speciosa*)

Rapid grower, hardy, useful for screens.

			1 to 9 Trees	10 to 29 Trees
3	to 4	ft. ....	\$ .25	\$ .20 each
4	to 5	ft. ....	.40	.35 each
5	to 6	ft. ....	.60	.55 each
6	to 8	ft. ....	.75	.65 each
8	to 10	ft. ....	1.00	.90 each
10	to 12	ft. 1¼ to 1½ in. cal. ....	1.50	1.35 each
12	to 14	ft. 1½ to 1¾ in. cal. ....	2.00	1.75 each
1¾	to 2	in. cal. ....	2.50	2.25 each
2	to 2½	in. cal. ....	3.00	2.75 each
2½	to 3	in. cal. ....	3.50	3.25 each

Black Cherry (*Prunus serotina*)

5 to 6 ft. ....	\$1.25	\$1.10 each
-----------------	--------	-------------

Black Locust (*Robinia pseudoacacia*)

Fragrant white flowers in May.

8 to 10 ft. ....	\$1.25	\$1.10 each
10 to 12 ft. 1¼ to 1½ in. cal. ....	1.50	1.35 each
12 to 14 ft. 1½ to 1¾ in. cal. ....	2.00	1.75 each
1¾ to 2 in. cal. ....	2.50	2.25 each
2 to 2½ in. cal. ....	3.00	2.75 each
2½ to 3 in. cal. ....	3.50	3.25 each
3 to 3½ in. cal. ....	4.00	3.75 each
3½ to 4 in. cal. ....	5.00	4.50 each

Cut Leaf Weeping Birch (*Betula pendula gracilis*)

Graceful drooping habit, silver-white bark.

4 to 5 ft. ....	\$2.50 each
5 to 6 ft. ....	3.50 each

European Linden (*Tilia platyphyllos*)

Large, light green leaves.

4 to 5 ft. ....	\$1.50	\$1.35 each
5 to 6 ft. ....	1.75	1.50 each
6 to 7 ft. ....	2.00	1.75 each
7 to 8 ft. ....	2.50	2.25 each
8 to 10 ft. ....	3.00	2.75 each

Horse Chestnut (*Aesculus hippocastanum*)

White flowers, valuable lawn tree.

18 to 24 in. ....	\$ .60	\$ .50 each
2 to 3 ft. ....	1.00	.90 each

Judas Tree or Red Bud (*Cercis canadensis*)

Rich, purple flowers in early spring. Effective with evergreens.

2 to 3 ft. ....	\$1.00	\$ .90 each
3 to 4 ft. ....	1.25	1.10 each
4 to 5 ft. ....	1.50	1.35 each
5 to 6 ft. ....	2.00	1.75 each
10 to 12 ft. ....	5.00	4.50 each

**SHADE TREES (Continued)**

**Honey Locust (Gleditsia triacanthos)**

Thorny trees with fragrant white flowers in May.

			1 to 9 Trees	10 to 29 <sup>+</sup> Trees
3	to	4 ft. ....	\$ .40	\$ .35 each
4	to	5 ft. ....	.60	.55 each
5	to	6 ft. ....	.75	.65 each
6	to	7 ft. ....	.90	.80 each
7	to	8 ft. ....	1.00	.90 each
8	to	10 ft. ....	1.25	1.10 each
10	to	12 ft. 1 $\frac{1}{4}$ to 1 $\frac{1}{2}$ in. cal. ....	1.50	1.35 each
12	to	14 ft. 1 $\frac{1}{2}$ to 1 $\frac{3}{4}$ in. cal. ....	2.00	1.75 each
1 $\frac{3}{4}$	to	2 in. cal. ....	2.50	2.25 each
2	to	2 $\frac{1}{2}$ in. cal. ....	3.00	2.75 each

**Maiden Hair Tree**

(Ginkgo biloba or Salisburia adiantifolia)

Picturesque, interesting, quite distinct. Recommended for lawns and streets.

3 to 4 ft. ....	\$ .75 each
4 to 5 ft. ....	1.00 each
5 to 6 ft. ....	1.50 each
6 to 7 ft. ....	2.00 each
7 to 8 ft. ....	2.50 each

**Sweet Gum (Liquidambar styraciflua)**

Purplish crimson leaves in fall—suitable for lawn and avenues.

3 to 4 ft. ....	\$1.00	\$ .90 each
4 to 5 ft. ....	1.25	1.10 each
5 to 6 ft. ....	1.50	1.35 each
6 to 7 ft. ....	2.00	1.75 each
7 to 8 ft. ....	2.50	2.25 each
8 to 10 ft. ....	3.00	2.75 each

**Sassafras (Sassafras variifolium)**

Valuable for screen. Brilliant orange, yellow fall foliage.

4 to 5 ft. ....	\$1.00	\$ .90 each
5 to 6 ft. ....	1.25	1.10 each

**Silk Tree (Albizia julibrissin)**

Small tree of great grace and beauty, low spreading top.

3 to 4 ft. ....	\$ .75 each
4 to 5 ft. ....	1.00 each
5 to 6 ft. ....	1.25 each
6 to 7 ft. ....	1.50 each
7 to 8 ft. ....	2.00 each
8 to 10 ft. ....	3.00 each

SHADE TREES (Continued)

Tree of Heaven (*Ailanthus glandulosa*)

Succeeds under most adverse city conditions. Large leaves, grows rapidly.

	1 to 9 Trees	10 to 29 Trees
6 to 7 ft. ....	\$1.25	\$1.10 each
7 to 8 ft. ....	1.50	1.35 each
8 to 10 ft. ....	1.75	1.50 each
10 to 12 ft. ....	2.25	2.00 each

Tulip Tree (*Liriodendron tulipifera*)

Quick grower, yellow tulip-like flowers. Prefers moist soils.

8 to 10 ft. ....	\$1.50	\$1.35 each
10 to 12 ft. 1¼ to 1½ in. cal. ....	2.00	1.75 each
12 to 14 ft. 1½ to 2 in. cal. ....	2.50	2.25 each
2 to 2½ in. cal. ....	3.00	2.75 each
2½ to 3 in. cal. ....	3.50	3.25 each
3 to 3½ in. cal. ....	4.00	3.75 each
3½ to 4 in. cal. ....	5.00	4.50 each

Texas Umbrella Tree (*Melia azedarach umbraculiformis*)

A rapid grower with handsome shape, beautiful flowers and attractive fruit. The flowers are lilac-colored and come in April in graceful panicles, and are followed by yellowish opaque berries. Dense, round, spreading umbrella-like heads.

2 to 3 ft. ....	\$ .75	\$ .65 each
3 to 4 ft. ....	1.00	.90 each
4 to 5 ft. ....	1.50	1.35 each

HARRISON GROWN ORNAMENTAL  
HEDGE PLANTS

PRIVETS

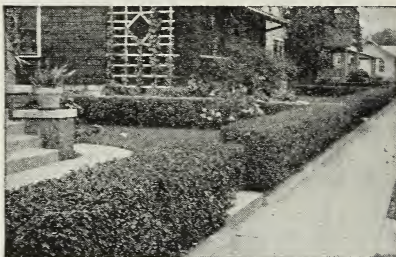
California Privet (*Ligustrum ovalifolium*)  
(Heavy Branched)

We grow California Privet by the mile. Most popular hedge plant, can be trimmed in any desired shape. For planting long hedges, this is the most economical variety. Quick grower.

	1 to 9 Plants	10 to 29 Plants	30 to 299 Plants	300 to 3000 Plants
8 to 12 in. ....	\$ .05	\$ .04	\$ .03	\$ .02 each
12 to 18 in. ....	.06	.05	.04	.03 each
18 to 24 in. ....	.08	.07	.05	.04 each
2 to 3 ft. ....	.12	.10	.07	.05 each
3 to 4 ft. ....	.20	.15	.11	.08 each
4 to 5 ft. ....	.30	.25	.20	.15 each
5 to 6 ft. ....	.35	.30	.25	.20 each
6 to 7 ft. ....	.50	.45	.35	.30 each

*Plant a Hedge Instead of  
Building a Fence*

PRIVETS (Continued)



California Privet Hedge.

**Golden Variegated Privet**  
(*Ligustrum ovalifolium variegatum*)

Creamy white with yellow background leaf.

	1 to 9 Plants	10 to 29 Plants
4 to 6 in. ....	\$ .20	\$ .15 each
6 to 8 in. ....	.25	.20 each
8 to 12 in. ....	.30	.25 each

**Ibota Privet (*Ligustrum Ibota*)**

Very hardy, retains leaves late with black berries in winter.

	1 to 9 Plants	10 to 29 Plants	30 to 299 Plants	300 to 3000 Plants
8 to 12 in. ....	\$ .06	\$ .05	\$ .04	\$ .03 each
12 to 18 in. ....	.08	.07	.05	.04 each
18 to 24 in. ....	.12	.10	.07	.05 each
2 to 3 ft. ....	.20	.15	.11	.08 each
3 to 4 ft. ....	.30	.25	.20	.15 each
4 to 5 ft. ....	.35	.30	.25	.20 each
5 to 6 ft. ....	.50	.45	.35	.30 each
6 to 7 ft. ....	.60	.55	.45	.40 each

**Lodense Privet (*Ligustrum nanum compactum*)**

Hardy, low, dense, slow growing privet, suitable for formal hedges.

	1 to 9 Plants	10 to 29 Plants
6 to 12 in. ....	\$ .20	\$ .15 each
12 to 15 in. ....	.30	.25 each
15 to 18 in. ....	.40	.35 each



## HARRISON-GROWN BARBERRY



Japanese Barberry makes the best Hedge. Our volume production has enabled us to reduce the price on Barberry Hedge.

### Japanese Barberry (*Berberis thunbergi*)

Best low dense hedge plant grown. Its abundant small light green leaves, which turn to rich colors in autumn, and its wealth of scarlet berries make it very attractive. Extremely hardy and requires but little pruning. Ornamental and graceful the whole year.

	1 to 9 Plants	10 to 29 Plants	30 to 299 Plants	300 to 3000 Plants
6 to 9 in. ....	\$ .08	\$ .06	\$ .05	\$ .04 each
9 to 12 in. ....	.13	.10	.08	.07 each
12 to 18 in. ....	.18	.14	.11	.09 each
18 to 24 in., bushy..	.23	.20	.17	.15 each
2 to 2½ ft., bushy..	.35	.30	.25	.20 each
2½ to 3 ft., bushy..	.40	.35	.30	.25 each
3 to 3½ ft., bushy..	.50	.45	.40	.35 each
3½ to 4 ft., bushy..	.55	.50	.45	.40 each

### New Red Leaved Barberry

(*Berberis thunbergi atropurpurea*)

A new variety, bright, reddish purplish foliage. Should be planted in sun for best color.

	1 to 9 Plants	10 to 29 Plants
8 to 10 in. ....	\$ .75	\$ .65 each

### Box Barberry (Dwarf)

(*Berberis thunbergi minor*)

Very dwarf compact form, valuable for edging beds in formal gardening and for very low hedges.

8 to 10 in. ....	\$ .40	\$ .35 each
------------------	--------	-------------

Save 5% by Sending Cash  
With Order

**HARRISON GROWN BROAD-LEAVED  
EVERGREEN SHRUBS AND TREES**

**JAPANESE HARDY EVERGREEN  
AZALEAS**

**Azalea Amoena**

Conspicuous purple red flowers in May.

	1 to 9 Plants	10 to 29 Plants
6 to 8 in. spread .....	\$1.25	\$1.10 each
8 to 10 in. spread .....	1.50	1.35 each
10 to 12 in. spread .....	2.00	1.75 each
12 to 15 in. spread .....	2.50	2.25 each
15 to 18 in. spread .....	3.50	3.25 each

**Azalea Hinodegeri**

Profuse bloomer, flowers very bright, carmine pink in spring.

6 to 8 in. spread .....	\$1.50 each
8 to 10 in. spread .....	1.75 each

**Azalea Kurume (Mixed colors)**

6 to 8 in. spread .....	\$1.00	\$ .90 each
8 to 10 in. spread .....	1.25	1.10 each
10 to 12 in. spread .....	1.75	1.50 each

**Azalea Kaempferi (Torch Azalea)**

Foliage bright green—flowers varying from coral red to orange pink.

10 to 12 in. spread .....	\$2.00	\$1.75 each
12 to 15 in. spread .....	2.50	2.25 each

**Red Salmon Azalea (Azalea macrantha)**

Red flowers.

10 to 12 in. spread .....	\$2.50	\$2.25 each
---------------------------	--------	-------------

**EUONYMUS**

**Evergreen Burning Bush (Green Euonymus)  
(Euonymus japonicus)**

Green, glossy foliage. Thrives at seashores.

9 to 12 in. ....	\$ .75	\$ .65 each
12 to 15 in. ....	1.00	.90 each
15 to 18 in. ....	1.50	1.35 each
18 to 24 in. ....	2.00	1.75 each
2 to 2½ ft. ....	2.50	2.25 each
2½ to 3 ft. ....	3.00	2.75 each

EVERGREEN SHRUBS AND TREES (Continued)

Silverspot Burning Bush  
(*Euonymus japonicus arbovariegatus*)

Dwarf, type silver variegated leaves.

	1 to 9 Ever- greens	10 to 29 Ever- greens
8 to 10 in. ....	\$ .90	

European *Euonymus* (*Euonymus europaeus*)

Bright, yellow flowers in spring, followed by rose-colored berries, which hang in clusters until mid-winter. Leaves crimson color in fall. Stems green—leaves dark polished green in summer. Semi-evergreen type.

12 to 15 in. ....	\$1.00	\$ .90 each
15 to 18 in. ....	1.50	1.35 each
18 to 24 in. ....	2.00	1.75 each
2 to 2½ ft. ....	2.50	2.25 each

Golden Leaf *Euonymus* (*Euonymus japonicus aureus*)

Dwarf type, golden colored leaves.

6 to 9 in. ....	\$1.00	\$ .90 each
-----------------	--------	-------------

Goldspot *Euonymus*

(*Euonymus japonicus aureovariegatus*)

Variegated golden color.

4 to 6 in. ....	\$ .50	\$ .45 each
6 to 9 in. ....	.75	.65 each
9 to 12 in. ....	1.00	.90 each
12 to 15 in. ....	1.25	1.10 each
15 to 18 in. ....	1.50	1.35 each

HOLLY

American Holly (*Ilex opaca*)

Red berries, evergreen leaves.

12 to 15 in. ....	\$2.00 each
15 to 18 in. ....	2.50 each
18 to 24 in. ....	3.00 each
2 to 3 ft. ....	4.00 each

Holly-leaved Mahonia (*Oregon Holly Grape*)

(*Mahonia aquifolium*)

Handsome shrub with dark lustrous green spiny tooth leaves, yellow flowers in spring.

12 to 15 in. ....	\$1.50 each
15 to 18 in. ....	2.00 each
18 to 24 in. ....	2.50 each

Japanese Holly (*Ilex crenata*)

Shrub with glossy, dark green leaves and black berries.

12 to 15 in. ....	\$2.00 each
-------------------	-------------

Little Leaf Japanese Holly

(*Ilex crenata microphylla*)

12 to 15 in. ....	\$3.00 each
-------------------	-------------

## LAURELS

### English Cherry Laurel (*Laurocerasus officinalis*)

A valuable shrub of great vigor, beautiful broad shining rich evergreen foliage. Not hardy in the North.

	1 to 9 Plants	10 to 29 Plants
12 to 18 in. ....	\$1.50	\$1.35 each
18 to 24 in. ....	2.50	2.25 each

### Shipka Cherry Laurel

(*Laurocerasus officinalis schipkaensis*)

A more hardy type—broad shining, glossy evergreen foliage.

12 to 18 in. ....	\$1.75	\$1.50 each
18 to 24 in. ....	3.00	2.75 each

### Mountain Laurel (*Kalmia latifolia*)

Most effective in June when the clusters of pink flowers open. Good foliage, likes shady locations.

18 to 24 in. ....	\$1.00	\$ .90 each
2 to 3 ft. ....	1.50	1.35 each
3 to 4 ft. ....	2.00	1.75 each
4 to 5 ft. ....	2.50	2.25 each
5 to 6 ft. ....	3.00	2.75 each

## HARDY FLOWERING RHODODENDRONS

### Carolina Rhododendron (*Rhododendron carolinianum*)

Low, compact grower with pale rosy pink flowers.

8 to 12 in. ....	\$1.25	\$1.10 each
------------------	--------	-------------

### Catawaba Rhododendron (*Rhododendron catawbiense*)

Late spring blooms of rose-lavender.

8 to 12 in. ....	\$1.25	\$1.10 each
12 to 15 in. ....	1.50	1.35 each
15 to 18 in. ....	2.00	1.75 each
18 to 24 in. ....	2.50	2.25 each

### Rosbay Rhododendron (*Rhododendron maximum*)

Beautiful lavish white to blush pink blooms. Large handsome foliage.

8 to 12 in. ....	\$1.00	\$ .90 each
12 to 15 in. ....	1.25	1.10 each
15 to 18 in. ....	1.75	1.50 each
18 to 24 in. ....	2.25	2.00 each

---

*Harrisons Nurseries Have Been Leaders  
for Forty-four Years*

**OTHER LEADING VARIETIES OF BROAD-LEAF EVERGREENS AND SHRUBS**

**Bush Arbutus (Abelia grandiflora)**

Best evergreen shrub grown. Attractive dwarf, suitable for sunny or shady locations, practically evergreen, beautiful, small, dark green, glossy foliage. Small numerous pretty white flowers tinged with pink through summer and early fall.

		1 to 9 Plants	10 to 29 Plants
6	to 12 in.	.....\$ .75	\$ .65 each
12	to 18 in.	..... 1.25	1.00 each
18	to 24 in.	..... 1.50	1.35 each
2	to 2½ ft.	..... 2.00	1.75 each
2½	to 3 ft.	..... 3.00	2.75 each

**Bayberry or Southern Wax Myrtle (Myrica cerifera)**

Beautiful rich green foliage, turning to purplish bronze in fall. Dark gray fruit in winter.

18 to 24 in.	.....\$ .75	\$ .65 each
2 to 3 ft.	..... 1.00	.90 each

**Northern Bayberry or Northern Wax Myrtle**

Beautiful rich green foliage, turning bronze in fall. Roundish leaves. Gray fruit in winter. Very hardy.

18 to 24 in.	.....\$ .75	\$ .65 each
2 to 3 ft.	..... 1.00	.90 each

**Gold Dust Aucuba (Aucuba japonica variegata)**

Glossy evergreen leaves, beautifully spotted with yellow.

6 to 9 in.	.....\$1.25	\$1.10 each
9 to 12 in.	..... 1.75	1.50 each

**Japanese Broad-leaved Evergreen (Ligustrum japonicum)**

Beautiful evergreen shrub, dense and symmetrical outline. Creamy white flowers, followed by purplish berries.

2 to 3 ft.	.....\$1.00	\$ .90 each
3 to 4 ft.	..... 1.50	1.35 each
4 to 5 ft.	..... 2.00	1.75 each

**Lucidum Glossy Broad Leaf Evergreen  
(Ligustrum lucidum)**

Large, thick, shiny dark green leaves, white flowers—black berries in winter.

12 to 15 in.	.....\$1.50	each
15 to 18 in.	..... 2.25	each
18 to 24 in.	..... 3.00	each
2 to 3 ft.	..... 4.00	each

*This Catalog Is the Only Agent We Employ*

**EVERGREEN SHRUBS AND TREES (Continued)**

**Southern Magnolia (Magnolia grandiflora)**

Greatest of all Southern ornamental trees. Large glossy leaves, handsome white flowers.

	1 to 9 Trees	10 to 29 Trees
12 to 15 in. ....	\$1.50	\$1.35 each
15 to 18 in. ....	2.00	1.75 each

**FLOWERING ORNAMENTAL SHRUBS**

**Althea or Rose of Sharon**

(Althea frutex or Hibiscus syriacus)

Old-fashioned shrub, handsome flowers in mid-summer.

Colors: Double pink, single pink, double red, single red, double white, single white.

	1 to 9 Shrubs	10 to 29 Shrubs
12 to 18 in. ....	\$ .25	\$ .20 each
18 to 24 in. ....	.35	.30 each
2 to 3 ft. ....	.50	.40 each



Althea or Rose of Sharon.

**FLOWERING SHRUBS (Continued)**

**Aralia—Five Leaved (*Acanthopanax pentaphyllum*)**

Quick growing, green foliage.

	1 to 9 Shrubs	10 to 29 Shrubs
2 to 3 ft. ....	\$ .60	
3 to 4 ft. ....	.70	
4 to 5 ft. ....	.80	

**African Tamarisk**

Feathery, green, gray foliage, effective near water. Thrives at seashore.

3 to 4 ft. ....	\$ .60	\$ .50 each
4 to 5 ft. ....	.75	.65 each
5 to 6 ft. ....	1.00	.90 each
6 to 7 ft. ....	1.25	1.00 each

**Arrow Wood (*Viburnum dentatum*)**

White flowers, blue-black berries. Green leaves.

18 to 24 in. ....	\$ .60	\$ .50 each
-------------------	--------	-------------

**American Elder (*Sambucus canadensis*)**

White flowers in summer with black fruit later.

2 to 3 ft. ....	\$ .70	\$ .60 each
-----------------	--------	-------------

**Button Bush (*Cephalanthus occidentalis*)**

Creamy white flowers.

18 to 24 in. ....	\$ .60	\$ .50 each
-------------------	--------	-------------

**Beauty Bush (*Kolkwitzia amabilis*)**

Pink tubular flowers, heavy bloomer, hardy—new introduction.

18 to 24 in. ....	\$1.50	\$1.25 each
-------------------	--------	-------------

**Butterfly Bush (*Buddleia magnifica*)**

Quick growing, large lilac-colored flowers. Attracts butterflies.

2 to 3 ft. ....	\$ .40	\$ .35 each
3 to 4 ft. ....	.60	.50 each
4 to 5 ft. ....	.70	.60 each

**Chinese Beautyberry (*Callicarpa purpurea*)**

Graceful branches, small flowers in summer—violet red berries in fall.

18 to 24 in. ....	\$ .60	\$ .50 each
-------------------	--------	-------------

**Chokeberry (*Aronia arbutifolia*)**

Bright red berries in fall.

2 to 3 ft. ....	\$1.00	\$ .90 each
-----------------	--------	-------------

**FLOWERING SHRUBS (Continued)**

**Cork Bark Euonymus (Euonymus alatus)**

Dwarf, compact habit, wood very corky, leaves small, fruit red.

		1 to 9 Shrubs
18 to 24 in. ....	\$1.00	each
2 to 3 ft. ....	1.50	each

**Crepe Myrtle (Lagerstoemia indica)**

Pink, Purple, Red and White Varieties.

Small, green, glossy leaves, very beautiful showy flowers during summer, noticeable object in any landscape. Not hardy north of Mason-Dixon line, but most popular Southern shrub.

		1 to 9 Shrubs	10 to 29 Shrubs
12 to 18 in. ....	\$1.25	\$1.00	each
18 to 24 in. ....	1.50	1.35	each
2 to 3 ft. ....	2.00	1.75	each

**Cutleaf Staghorn Sumac (Rhus typhina laciniata)**

Leaves finely cut, giving an attractive, feathery appearance. Brilliant in autumn.

2 to 3 ft. ....	\$1.00	\$ .90	each
-----------------	--------	--------	------

**DEUTZIAS**

Handsome flowered shrubs of low and medium height for the garden or border. The pretty flowers may be cut for house decoration in early summer.

**Lemoine Deutzia**

Large white flowers in June.

18 to 24 in. ....	\$ .60	\$ .50	each
-------------------	--------	--------	------

**Deutzia Scabra, Pride of Rochester**

Vigorous, tall grower, flowers tinted with pink.

18 to 24 in. ....	\$ .30	\$ .20	each
2 to 3 ft. ....	.40	.30	each
3 to 4 ft. ....	.50	.40	each
4 to 5 ft. ....	.60	.50	each
5 to 6 ft. ....	.70	.60	each
6 to 7 ft. ....	.80	.70	each

**Rose Panicle Deutzia (Deutzia gracilis rosea)**

Dwarf type, attractive pink flowers.

18 to 24 in. ....	\$ .60	\$ .50	each
-------------------	--------	--------	------

**Slender Deutzia (Dwarf) (Deutzia gracilis)**

White flowers cover the entire plant. For base planting and edging.

12 to 18 in. ....	\$ .30	\$ .25	each
18 to 24 in. ....	.40	.30	each
2 to 3 ft. ....	.50	.40	each



**FLOWERING SHRUBS (Continued)**

**Snow Flake Deutzia**

(*Deutzia scabra candidissima*)

Vigorous, graceful grower, double white flowers. One of the best.

	1 to 9 Shrubs	10 to 29 Shrubs
18 to 24 in. ....	\$ .30	\$ .20 each
2 to 3 ft. ....	.40	.30 each
3 to 4 ft. ....	.50	.40 each
4 to 5 ft. ....	.60	.50 each

**Downy Shadblow or Common Dwarf Juneberry**

(*Amelanchier canadensis*)

White flowers early spring. Fruit relished by birds.

18 to 24 in. ....	\$ .60	\$ .50 each
-------------------	--------	-------------

**DOGWOODS**

Strong, growing shrubs, attractive for their wealth of flowers, as well as abundant berries, leaf coloring in summer and fall, and their bright-colored branches in winter.

**Blood-Twig Dogwood (*Cornus sanguinea*)**

White flowers, black fruit, bright red upright branches.

2 to 3 ft. ....	\$ .60	\$ .50 each
-----------------	--------	-------------

**Gray Dogwood (*Cornus paniculata*)**

Tall, upright, with white flowers and fruit on red stems.

2 to 3 ft. ....	\$ .75	\$ .65 each
-----------------	--------	-------------

**Golden Twig Dogwood**

(*Cornus stolonifera flaviramea*)

Attractive white flowers.

2 to 3 ft. ....	\$ .75	\$ .65 each
-----------------	--------	-------------

**Red Branched Dogwood (*Cornus siberica*)**

Bright red bark, white flowers, blue fruit, quick grower. Beautiful winter effect.

2 to 3 ft. ....	\$ .40	\$ .35 each
3 to 4 ft. ....	.60	.50 each
4 to 5 ft. ....	1.00	.90 each

**Red Flowering Dogwood (*Cornus florida rubra*)**

One of the most popular small ornamental trees. Handsome red flowers, making an attractive lawn specimen.

18 to 24 in. ....	\$2.50	\$2.25 each
-------------------	--------	-------------

**FLOWERING SHRUBS (Continued)**

**Red Osier Dogwood (Cornus stolonifera)**

Spreading habit, red bark, white flowers and berries.

	1 to 9 Shrubs	10 to 29 Shrubs
2 to 3 ft. ....	\$ .75	\$ .65 each
3 to 4 ft. ....	1.00	.90 each
4 to 5 ft. ....	1.50	1.35 each

**White Flowering Dogwood (Cornus florida)**

One of the best native spring flowering small trees, with white flowers and bright red berries in fall.

2 to 3 ft. ....	\$ .50	\$ .45 each
3 to 4 ft. ....	.75	.65 each
4 to 5 ft. ....	1.00	.90 each

**Cornelian Cherry Dogwood (Cornus mas)**

Bright yellow flowers in early spring.

2 to 3 ft. ....	\$1.00	\$ .90 each
-----------------	--------	-------------

**FORSYTHIA OR GOLDEN BELL**

One of the first shrubs to bloom in the spring. Its bell-shaped yellow flowers are always attractive.

**Border Golden Bell (Forsythia intermedia)**

Tall shrub with bright yellow flowers.

	1 to 9 Shrubs	10 to 29 Shrubs
3 to 4 ft. ....	\$ .70	\$ .60 each
4 to 5 ft. ....	.85	.75 each

**Fortune's Golden Bell (Forsythia suspensa fortunei)**

Good habit, arching branches.

2 to 3 ft. ....	\$ .60	\$ .50 each
3 to 4 ft. ....	.70	.60 each

**Green Stem Golden Bell (Forsythia viridissima)**

Late bloomer, most vigorous grower, with dark leaves and bright yellow flowers.

2 to 3 ft. ....	\$ .60	\$ .50 each
3 to 4 ft. ....	.70	.60 each
4 to 5 ft. ....	.90	.80 each

**Weeping Golden Bell (Forsythia suspensa)**

Golden yellow flowers with prostrate branches. Especially good for slopes.

2 to 3 ft. ....	\$ .60	\$ .50 each
3 to 4 ft. ....	.70	.60 each
4 to 5 ft. ....	.90	.80 each

*Note Our Complete Assortment  
of Shrubs*

**FLOWERING SHRUBS (Continued)**

**False Indigo Bush (*Amorpha fruticosa*)**

Deep purple flowers in June, strong grower.

	1 to 9	10 to 29
	Shrubs	Shrubs
2 to 3 ft. ....	\$ .50	\$ .40 each
3 to 4 ft. ....	.65	.55 each
4 to 5 ft. ....	.80	.70 each

**Golden Chain**

(*Laburnum vulgare* or *cytisus laburnum*)

Handsome golden yellow flowers in June.

3 to 4 ft. ....	\$1.50	\$1.25 each
-----------------	--------	-------------

**Gold Flower (*Hypericum moserianum*)**

Yellow flowers, blooms during July.

8 to 12 in. ....	\$ .50	\$ .40 each
------------------	--------	-------------

**Globe Flower (*Kerria japonica flore-plena*)**

Double yellow blossoms with green foliage.

2 to 3 ft. ....	\$1.00	\$ .90 each
-----------------	--------	-------------

**Groundsel Bush (*Baccharis halmifolia*)**

Conspicuous, fluffy seed pods in September. Good for seashore.

18 to 24 in. ....	\$ .75	\$ .65 each
-------------------	--------	-------------

**BUSH HONEYSUCKLES**

The upright honeysuckles have pretty, bright flowers and later showy berries throughout the fall. Should be used in shrub groups.

**Fragrant Honeysuckle (*Lonicera fragrantissima*)**

Early pink and white fragrant flowers.

	1 to 9	10 to 29
	Shrubs	Shrubs
2 to 3 ft. ....	\$ .60	\$ .50 each

**Japanese Bush Honeysuckle (*Lonicera morrowii*)**

Early white flowers, followed by red berries.

2 to 3 ft. ....	\$ .60	\$ .50 each
3 to 4 ft. ....	.70	.60 each

**Pink Tartarian Honeysuckle**

(*Lonicera grandiflora rosea*)

Abundance of bright pink flowers. Very noticeable.

2 to 3 ft. ....	\$ .60	\$ .50 each
3 to 4 ft. ....	.70	.60 each

**Red Tartarian Honeysuckle (*Lonicera tartarica rubra*)**

Crimson flowers, bright red fruit.

2 to 3 ft. ....	\$ .60	\$ .50 each
3 to 4 ft. ....	.70	.60 each

## HYDRANGEAS

Among the best and most popular shrubs, valuable for their wealth of late summer blooms. Thrive at seashores as well as other locations.

### Hydrangea (Paniculata Grandiflora) (Pee Gee) (Large flowered)

Large flowers, first snowy white, then pink, then reddish bronze and green. Blooms from middle summer until fall. Best selling variety of Hydrangeas grown.

	1 to 9 Shrubs	10 to 29 Shrubs
12 to 18 in. ....	\$ .40	\$ .30 each
18 to 24 in. ....	.50	.40 each
2 to 3 ft. ....	.60	.50 each
3 to 4 ft. ....	.75	.65 each

### Hills of Snow Hydrangea (Aborescens grandiflora)

Conspicuous white and imposing white flowers in great clusters during mid-summer. Suitable for shady places.

12 to 18 in. ....	\$ .40	\$ .30 each
18 to 24 in. ....	.50	.40 each
2 to 3 ft. ....	.60	.50 each
3 to 4 ft. ....	.75	.65 each

### Pink and Blue Hydrangea (Hydrangea otaksa)

Old favorite Southern Hydrangea, not hardy in the North. Color depends upon the acidity of soil. Very attractive and popular.

12 to 18 in. ....	\$ .75	\$ .65 each
18 to 24 in. ....	1.00	.90 each

### French Hydrangea (Mme. Moulere)

Pure white, with carmine eye flowers.

12 to 18 in. ....	\$ .50	\$ .40 each
18 to 24 in. ....	.75	.65 each

### French Hydrangea (Thomas Hogg)

White flowers.

12 to 18 in. ....	\$ .50	\$ .40 each
18 to 24 in. ....	.75	.65 each

### High Bush Cranberry (Viburnum americanum)

Bright, scarlet berries, large bunches during winter.

18 to 24 in. ....	\$ .75	\$ .65 each
-------------------	--------	-------------

### Hugonis Rose (Rosa hugonis)

Pink flowers—May.

2 year .....	\$1.00	\$ .90 each
--------------	--------	-------------

---

*Shrubs are Freshly Dug at  
Shipping Time*

**FLOWERING SHRUBS (Continued)**

**Indian Currant or Coral Berry (Symphoricarpos vulgaris)**

Dwarf, coral red berries until late winter; thrives in shade.

	1 to 9 Shrubs	10 to 29 Shrubs
2 to 3 ft. ....	\$ .35	\$ .30 each
3 to 4 ft. ....	.50	.40 each

**Japanese Quince (Cydonia japonica)**

Scarlet flowers in April.

2 to 3 ft. ....	\$1.00	\$ .90 each
3 to 4 ft. ....	1.25	1.00 each
4 to 5 ft. ....	1.50	1.25 each

**LILACS**

**Common Purple Lilac (Syringa vulgaris)**

Most suitable for tall hedges.

	1 to 9 Shrubs	10 to 29 Shrubs
18 to 24 in. ....	\$ .50	\$ .45 each
2 to 3 ft. ....	.60	.50 each
3 to 4 ft. ....	.75	.65 each
4 to 5 ft. ....	1.00	.90 each

**Common White Lilac (Syringa vulgaris alba)**

Tall, slender, popular old variety.

18 to 24 in. ....	\$ .50	\$ .45 each
2 to 3 ft. ....	.60	.50 each

**Charles X Lilac**

Purplish red flowers. Single.

18 to 24 in. ....	\$ .75	\$ .65 each
2 to 3 ft. ....	1.00	.90 each

**Hugo Koster Lilac**

Purple flowers—best one of all purple Lilacs.

18 to 24 in. ....	\$ .75	\$ .65 each
2 to 3 ft. ....	1.00	.90 each

**Marie LeGraye Lilac**

Best type of white Lilac. Single.

18 to 24 in. ....	\$ .75	\$ .65 each
2 to 3 ft. ....	1.00	.90 each

**Michael Buchner Lilac**

Dwarf, double, beautiful trusses of pale lilac color.

18 to 24 in. ....	\$ .75	\$ .65 each
2 to 3 ft. ....	1.00	.90 each

---

*Note Our Liberal Guarantee*

**FLOWERING SHRUBS (Continued)**

**Mme. Lemoine Lilac**

Double, pure white.

	1 to 9 Shrubs	10 to 29 Shrubs
18 to 24 in. ....	\$.75	\$.65 each
2 to 3 ft. ....	1.00	.90 each

**Persian Purple Lilac**

18 to 24 in. ....	\$.60	\$.50 each
2 to 3 ft. ....	.75	.65 each

**Persian White Lilac**

18 to 24 in. ....	\$.60	\$.50 each
2 to 3 ft. ....	.75	.65 each

**President Grevy Lilac**

Double, bright blue.

18 to 24 in. ....	\$.75	\$.65 each
2 to 3 ft. ....	1.00	.90 each

**Villosa Lilac**

Dwarf, pink.

18 to 24 in. ....	\$.60	\$.50 each
2 to 3 ft. ....	.75	.65 each

**Ludwig Spaeth Lilac**

Darkest of blues—deep purplish shade. Single.

18 to 24 in. ....	\$.75	\$.65 each
2 to 3 ft. ....	1.00	.90 each

**MOCK ORANGES**

**Garland or Sweet Mock Orange**

(*Philadelphus coronarius*)

Fragrant, creamy white flowers.

	1 to 9 Shrubs	10 to 29 Shrubs
18 to 24 in. ....	\$.40	\$.35 each
2 to 3 ft. ....	.50	.45 each
3 to 4 ft. ....	\$.60	\$.50 each

**Gordon Mock Orange (*Philadelphus gordonianus*)**

Tall, but late bloomer.

2 to 3 ft. ....	\$.50	\$.45 each
3 to 4 ft. ....	.60	.50 each

**Large Flowered Mock Orange**

(*Philadelphus grandiflora*)

Very large, white flowers, tall growers.

2 to 3 ft. ....	\$.60	\$.50 each
3 to 4 ft. ....	.75	.65 each
4 to 5 ft. ....	1.00	.90 each

**FLOWERING SHRUBS (Continued)**

**Lemoine Mock Orange** (*Philadelphus lemoinei*)

Pure white single flowers, upright growth.		Dwarf.
		1 to 9      10 to 29
		Shrubs      Shrubs
18 to 24 in. ....	\$.75	\$ .65 each
2 to 3 ft. ....	1.00	.90 each

**Virginal Mock Orange** (*Philadelphus virginalis*)

Magnificent, new variety, sweetly fragrant, semi-double, large white flowers. Most desirable.

18 to 24 in. ....	\$1.00	\$ .90 each
2 to 3 ft. ....	1.25	1.10 each

**Memorial Rose** (*Rosa wichuraiana*)

White flowers, useful for covering banks or boulders.

2 year .....	\$.75	\$ .65 each
--------------	-------	-------------

**Nine Bark** (*Physocarpus opulifolius*)

Creamy white flowers, followed by red berries; grows in shady locations.

2 to 3 ft. ....	\$.50	\$ .45 each
3 to 4 ft. ....	.60	.50 each
4 to 5 ft. ....	.75	.65 each

**Nine Bark Golden**  
(*Physocarpus opulifolius luteus*)

Yellow foliage, white flowers.

2 to 3 ft. ....	\$.50	\$ .45 each
3 to 4 ft. ....	.60	.50 each
4 to 5 ft. ....	.75	.65 each

**Pearl Bush** (*Exochorda grandiflora*)

Dazzling white flowers.

2 to 3 ft. ....	\$.75	\$ .65 each
-----------------	-------	-------------

**Rugosa Rose** (*Rosa rugosa*)

Red flowers, orange scarlet fruits.

3 to 4 ft. ....	\$.50	\$ .45 each
-----------------	-------	-------------

**Siberian Pea Tree** (*Caragana arborescens*)

Yellow pea-shaped flowers.

18 to 24 in. ....	\$.50	\$ .45 each
2 to 3 ft. ....	.60	.50 each
3 to 4 ft. ....	.75	.65 each
4 to 5 ft. ....	1.00	.90 each

**Snowberry** (*Symphoricarpos racemosus*)

Large white berries in September.

18 to 24 in. ....	\$.50	\$ .45 each
-------------------	-------	-------------

**FLOWERING SHRUBS (Continued)**

**Sweet Pepper Bush or Summer Sweet**  
(*Clethra alnifolia*)

Spikes of fragrant flowers; prefers moist, shady places.

	1 to 9	10 to 29
	Shrubs	Shrubs
18 to 24 in. ....	\$ .75	\$ .65 each

**Sweet Scented Shrub or Carolina Allspice**  
(*Calycanthus floridus*)

Reddish brown flowers, spicy, fragrant June to September. Handsome foliage.

18 to 24 in. ....	\$ .50	\$ .45 each
2 to 3 ft. ....	.60	.50 each
3 to 4 ft. ....	.75	.65 each
4 to 5 ft. ....	1.00	.90 each
5 to 6 ft. ....	1.25	1.10 each

**Scotch Broom** (*Cytisus scoparius*)

Thin, green branches, yellow flowers.

18 to 24 in. ....	\$ .20	\$ .15 each
2 to 3 ft. ....	.25	.20 each
3 to 4 ft. ....	.35	.30 each
4 to 5 ft. ....	.50	.45 each
5 to 6 ft. ....	.75	.65 each

**Silver Bell Tree** (*Halesia tetraptera*)

Snow white bell-shaped flowers.

2 to 3 ft. ....	\$1.00	\$ .90 each
-----------------	--------	-------------

**SNOWBALLS—VIBURNUMS**

**Common Snowball** (*Viburnum opulus sterile*)

Showy round white flowers for Decoration Day.

	1 to 9	10 to 29
	Shrubs	Shrubs
18 to 24 in. ....	\$ .75	\$ .65 each

**Double Japanese Snowball**

(*Viburnum tomentosum plicatum*)

Flowers in large globular heads, pure white, hanging long on the bush. Very choice and desirable shrub.

18 to 24 in. ....	\$ .85	\$ .75 each
-------------------	--------	-------------

**Single Japanese Snowball** (*Viburnum tomentosum*)

White flowers, handsome foliage.

18 to 24 in. ....	\$ .75	\$ .65 each
-------------------	--------	-------------

**Fragrant Snowball** (*Viburnum carlesi*)

Buds before breaking are an attractive pink, developing to pure white flowers.

12 to 18 in. ....	\$2.25	\$2.00 each
-------------------	--------	-------------



**FLOWERING SHRUBS (Continued)**

**Siebold's Viburnum (Viburnum sieboldi)**

Tall grower, large green leaves, large white blooms, followed by red fruit.

	1 to 9	10 to 29
	Shrubs	Shrubs
18 to 24 in. ....	\$ .75	\$ .65 each

**Wayfaring Tree (Viburnum lantana)**

White flowers, followed by crimson to black fruit.

18 to 24 in. ....	\$ .85	\$ .75 each
-------------------	--------	-------------

**SPIREAS**

**Anthony Waterer Spirea**

Dwarf, rose pink flowers—very free bloomer.

	1 to 9	10 to 29
	Shrubs	Shrubs
12 to 18 in. ....	\$ .40	\$ .35 each

**Billardi Spirea (Spirea billiardi)**

Long spikes of rose pink flowers.

18 to 24 in. ....	\$ .40	\$ .35 each
2 to 3 ft. ....	.50	.45 each
3 to 4 ft. ....	.60	.55 each

**Double Bridal Wreath Spirea**

(Spirea prunifolia plena)

Earliest of spireas to bloom, with small, double white clustered flowers.

18 to 24 in. ....	\$ .60	\$ .50 each
-------------------	--------	-------------

**Korean Bridal Wreath Spirea (Spirea trichocarpa)**

Hardy late blooming white flowers, and retains glossy green foliage in late autumn. New introduction.

18 to 24 in. ....	\$1.25	\$1.10 each
-------------------	--------	-------------

**Thunberg's Spirea (Spirea thunbergi)**

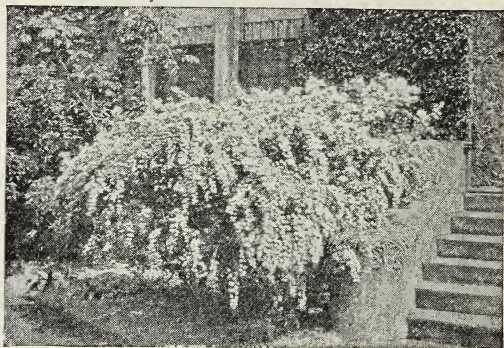
White flowers with feathery, yellowish green foliage.

18 to 24 in. ....	\$ .50	\$ .45 each
2 to 3 ft. ....	.60	.50 each

*Buy Direct from the Growers. Save the  
Agent's Commission*

*Beautify the Grounds Surrounding Your Home*

FLOWERING SHRUBS (Continued)



Spirea Van Houttei.

**Van Houtte Spirea** (*Spirea vanhouttei*)

Grandest of all Spireas; very desirable shrub. Abundance of pure white blooms, graceful habit.

	1 to 9 Shrubs	10 to 29 Shrubs
18 to 24 in. ....	\$ .25	\$ .20 each
2 to 3 ft. ....	.35	.30 each
3 to 4 ft. ....	.45	.40 each
4 to 5 ft. ....	.55	.50 each

**Smoke Tree or Purple Fringe** (*Rhus cotinus*)

Small spreading tree with tiny flowers.

2 to 3 ft. ....	\$1.00	\$ .90 each
-----------------	--------	-------------

**Sweet Fern** (*Comptonia asplenifolia*)

Useful for shady locations.

12 to 18 in. ....	\$ .75	\$ .65 each
-------------------	--------	-------------

**WEIGELAS** (*Diervilla*)

**Crimson Weigela** (*Weigela floribunda*)

Crimson flowers, free bloomer.

3 to 4 ft. ....	\$ .60	\$ .50 each
4 to 5 ft. ....	.70	.60 each

*Our Nursery Stock is Freshly Dug at  
Shipping Time*

**FLOWERING SHRUBS (Continued)**

**Eva Rathke Weigela** (*Weigela hybrida* Eva Rathke)

Very attractive deep carmine red flowers, making a very showy shrub.

	1 to 9 Shrubs	10 to 29 Shrubs
18 to 24 in. ....	\$ .40	\$ .35 each
2 to 3 ft. ....	.50	.45 each
3 to 4 ft. ....	.65	.55 each

**Dwarf Variegated Weigela** (*Weigela nana variegata*)

Foliage variegated, margined with white. Pale pink flowers.

18 to 24 in. ....	\$ .50	\$ .45 each
2 to 3 ft. ....	.60	.55 each
3 to 4 ft. ....	.75	.65 each

**Henderson Weigela** (*Weigela hybrida* Hendersoni)

Quick grower, pink flowers.

12 to 18 in. ....	\$ .25	\$ .20 each
18 to 24 in. ....	.40	.35 each

**Pink Weigela** (*Weigela rosea*)

Popular variety—pink flowers.

18 to 24 in. ....	\$ .40	\$ .35 each
2 to 3 ft. ....	.50	.45 each
3 to 4 ft. ....	.60	.50 each
4 to 5 ft. ....	.70	.60 each

**White Fringe** (*Chionanthus virginica*)

Tassel-like flowers, blue fruit, strong grower.

18 to 24 in. ....	\$1.50	\$1.25 each
-------------------	--------	-------------

**White Kerria or Jetbead** (*Rhodotypos kerrioides*)

Single white flowers, shining black berries.

18 to 24 in. ....	\$ .75	\$ .65 each
-------------------	--------	-------------

**FLOWERING ORNAMENTAL TREES**

**Double Pink Flowering Almond**

(*Prunus glandulosa* *glabra albiplena*)

	1 to 9 Trees	10 to 29 Trees
2 to 3 ft. ....	\$ .70	\$ .60 each

**Double White Flowering Almond**

(*Prunus trichostyla sinensis*)

2 to 3 ft. ....	\$ .70	\$ .60 each
-----------------	--------	-------------

No Order Too Large and  
None Too Small

**FLOWERING ORNAMENTAL TREES (Continued)**

**Japanese Double Flowering Cherry**  
(*Prunus avium alba plena*)

	1 to 9 Trees	10 to 29 Trees
1 to 2 ft. ....	\$1.25	\$1.10 each
2 to 3 ft. ....	2.00	1.75 each

**Betchel's Double Flowering Crab**  
(*Malus ioensis plena*)

1 to 2 ft. ....	\$ .75	\$ .65 each
2 to 3 ft. ....	1.25	1.00 each

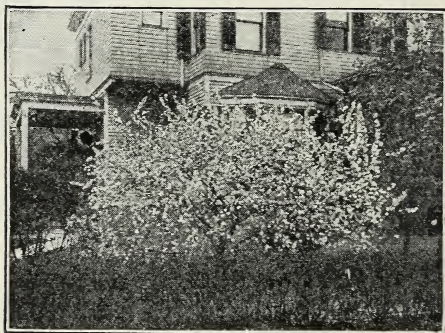
**Siberian Flowering Crab (*Malus baccata*)**

1 to 2 ft. ....	\$ .75	\$ .65 each
2 to 3 ft. ....	1.25	1.10 each
3 to 4 ft. ....	2.00	1.75 each
4 to 5 ft. ....	3.00	2.50 each
5 to 6 ft. ....	4.00	3.50 each

**Eleyi Red Flowering Crab (*Malus eleyi*)**

The finest Red Flowering Crab, recently introduced with wine-red flowers, dark wood and foliage.

1 to 2 ft. ....	\$1.50	\$1.40 each
2 to 3 ft. ....	3.00	2.75 each
3 to 4 ft. ....	4.00	3.75 each
4 to 5 ft. ....	5.00	4.75 each



**FLOWERING PEACH.**

**Double Red Flowering Peach**  
(*Prunus persica rubro plena*)

	1 to 9 Trees	10 to 29 Trees
2 to 3 ft. ....	\$ .40	\$ .30 each
3 to 4 ft. ....	.50	.40 each
4 to 5 ft. ....	.60	.50 each

**FLOWERING ORNAMENTAL TREES (Continued)**

**Double Pink Flowering Peach**  
(*Prunus persica rosea flore plena*)

	1 to 9 Trees	10 to 29 Trees
2 to 3 ft. ....	\$ .40	\$ .30 each
3 to 4 ft. ....	.50	.40 each
4 to 5 ft. ....	.60	.50 each

**Double White Flowering Peach**  
(*Prunus persica albo plena*)

2 to 3 ft. ....	\$ .40	\$ .30 each
3 to 4 ft. ....	.50	.40 each
4 to 5 ft. ....	.60	.50 each

**Purple Leaved Plum (*Prunus pissardi*)**

2 to 3 ft. ....	\$ .75	\$ .65 each
3 to 4 ft. ....	1.00	.90 each
4 to 5 ft. ....	1.25	1.10 each
5 to 6 ft. ....	1.50	1.25 each

**Semi-Double Pink Flowering Plum**  
(*Prunus triloba*)

2 to 3 ft. ....	\$1.25	\$1.10 each
-----------------	--------	-------------

**Paul's Double Scarlet Thorn (*Crataegus Paulii*)**

3 to 4 ft. ....	\$3.00	\$2.75 each
-----------------	--------	-------------

**Mulberry, Teas' Weeping (*Morus alba pendula*)**

4 to 6 ft. stems, 2 year heads.....	\$3.50	\$3.25 each
-------------------------------------	--------	-------------

**HARDY ORNAMENTAL CLIMBING VINES**

**Akebia—Fiveleaf (*Akebia quinata*)**

Small chocolate-colored fragrant flowers.

	1 to 9 Vines	10 to 29 Vines
2 yr.....	\$ .75	\$ .65 each

**Boston Ivy or Japanese Creeper**  
(*Ampelopsis veitchi*)

Strong climbing vine of rapid growth.

2 yr.....	\$ .65	\$ .55 each
-----------	--------	-------------

**Henry Clematis (*Clematis henryi*)**

Valuable climbing plant for pillars and trellises.  
Large, waxy pure white flowers.

2 yr.....	\$1.00	\$ .90 each
-----------	--------	-------------

**Jackman Clematis (*Clematis jackmani*)**

Large, velvet purple blooms in June and July.

2 yr.....	\$1.00	\$ .90 each
-----------	--------	-------------

**HARDY ORNAMENTAL CLIMBING VINES (Continued)**

**Mme. Edouard Andre Clematis**

Large flowers of unusual red color.

	1 to 9	10 to 29
	Vines	Vines
2 yr.....	\$1.00	\$ .90 each

**Sweet Autumn Clematis (*Clematis paniculata*)**

Bears masses of white fragrant blooms in autumn.

2 yr.....	\$ .50	\$ .45 each
-----------	--------	-------------

**Chinese Matrimony Vine (*Lycium chinense*)**

Purple flowers in late summer, red fruit.

2 yr.....	\$ .50	\$ .45 each
-----------	--------	-------------

**Chinese Blue Wisteria (*Wisteria sinensis*)**

Hardy climber, with large violet-blue flowers.

2 yr.....	\$ .75	\$ .65 each
-----------	--------	-------------

**Chinese White Wisteria (*Wisteria sinensis alba*)**

Strong grower with white flowers.

2 yr.....	\$ .75	\$ .65 each
-----------	--------	-------------

**Lavender-Purple Wisteria (*Wisteria magnifica*)**

2 yr.....	\$ .60	\$ .50 each
-----------	--------	-------------

**Dutchman's Pipe (*Aristolochia siphon*)**

A very thrifty grower, with heart-shaped leaves.

1 yr.....	\$ .50	\$ .45 each
-----------	--------	-------------

**English Ivy (*Hedra helix*)**

Evergreen, strong growing clinging vine; makes a good ground cover.

2 yr.....	\$ .50	\$ .45 each
-----------	--------	-------------

**Hall's Japanese Honeysuckle**

(*Lonicera japonica halliana*)

Dark, glossy green foliage, fragrant flowers from July until fall.

2 yr.....	\$ .40	\$ .35 each
-----------	--------	-------------

**Japanese Spurge (*Pachysandra terminalis*)**

Valuable evergreen ground cover.

2 yr.....	\$ .50	\$ .45 each
-----------	--------	-------------

**Kudzu Vine (*Pueroria thunbergiana*)**

Very strong grower, rosy purple flowers in autumn.

2 yr.....	\$ .50	\$ .45 each
-----------	--------	-------------

---

**Terms F. O. B. Berlin, Maryland. We allow 5% discount for cash with order or prior to date of shipment. Otherwise terms net.**

**HARDY ORNAMENTAL CLIMBING VINES (Continued)**

**Silver Lace Vine (Polygonum auberti)**

Strong grower of twining habit; silver-colored bloom all season.

	1 to 9	10 to 29
	Vines	Vines
2 yr.....	\$ .90	\$ .80 each

**Trumpet Vine (Bigonia radicans)**

Large, showy trumpet-shaped flowers, scarlet and orange color.

2 yr.....	\$ .50	\$ .45 each
-----------	--------	-------------

**Virginia Creeper or American Ivy  
(Ampelopsis quinquefolia)**

Valuable for rich, fiery autumn coloring.

3 yr.....	\$ .50	\$ .45 each
-----------	--------	-------------

**Winter Jasmine (Jasminum nudiflorum)**

Yellow bloom in early spring; makes a very showy plant.

2 yr.....	\$ .50	\$ .45 each
-----------	--------	-------------

**Winter Creeper (Euonymus radicans)**

Very desirable evergreen vine for covering banks and walls.

2 yr.....	\$ .50	\$ .45 each
-----------	--------	-------------

**FIELD GROWN ROSES**

**Hybrid Perpetual or June Roses**

**2 Year Field Grown**

1 to 9 bushes, 70c each; 10 to 29 bushes, 60c each.

- Anna de Diesbach. Carmine Pink.
- Captain Christy. Flesh Color.
- Captain Hayward. Carmine.
- Clio. Delicate pink.
- Frau Karl Druschki. White.
- General Jacqueminot. Crimson.
- Hugh Dickson. Crimson.
- Magna Charta. Pink.
- Margaret Dickson. White.
- Mrs. John Laing. Pink.
- Paul Neyron. Pink.
- Ulrich Brunner. Pink.

---

*A Rose Will Add Beauty to  
Any Home*

FIELD GROWN ROSES (Continued)

Tea and Everblooming Hybrid Tea Roses  
2 Year Field Grown

1 to 9 bushes, 85c each; 10 to 29 bushes, 75c each.

- Caroline Tostout. Pink.
- Gruss an Teplitz. Scarlet.
- Kaiserin Augusta Victoria. White.
- Killarney. Pale Pink.
- La France. Silvery Rose.
- Sunburst. Coppery Yellow.
- Columbia. Bright Rose Pink.
- Double White Killarney.
- Duchess of Wellington. Orange Pink.
- J. L. Mock. Cherry Pink.
- Laurent Carle. Velvety Carmine.
- Los Angeles. Coral Pink and Gold.
- Mad. Edouard Herriot. Coppery Terra Cotta.
- Mrs. Aaron Ward. Orange and Cream.
- Radiance. Bright Pink.
- Wm. F. Dreer. Gilded Flesh Pink.
- Red Radiance. Brilliant Crimson.
- Mrs. W. C. Miller. Salmon Pink.

Climber and Rambler Roses  
2 Year Field Grown

1 to 9 bushes, 70c each; 10 to 29 bushes, 60c each.

- American Pillar. Rosy Pink.
- Crimson Rambler. Crimson.
- Dorothy Perkins. Light Pink.
- Baby Rambler. Pink.
- Doctor Van Fleet. Flesh White.
- Tausendschon. First Pink, later Rose.
- Aviateur Bleriot. Apricot Yellow.
- Elcelsa. Blood Red Clusters.
- Mary Wallace. Rose Pink.
- Roserie. Deep Pink.

CANNAS

- Cleopatra. Crimson Red.
- Fairy Queen. Brilliant Pink with creamy base, center spattered with Gold and Coral Red.
- Golden Gate. Parti-colored, which opens Gold, but soon becomes rayed with Orange.



## CANNAS (Continued)

- King Humbert. Orange Scarlet, flecked with Carmine,  
Rose tinted at margin and base.  
King Midas. Yellow.  
Statue of Liberty. Red.  
The Ambassador. Scarlet.  
The President. Scarlet Red.  
Victory. Dwarf type—Creamy toned with Shell Pink.  
Vulcan. Garnet Red.

All varieties—1 to 9 Cannas, 30c each; 10 to 29 Cannas, 25c each; 30 to 299 Cannas, 20c each.

Mixed varieties of Cannas—1 to 9 Cannas, 20c each; 10 to 29 Cannas, 15c each; 30 to 299 Cannas, 10c each.

## DAHLIAS

- |                                |                                     |
|--------------------------------|-------------------------------------|
| Augusta Noonin. Red.           | Millionaire. Violet.                |
| Azalea. Yellow.                | Maurice Rivoire. Crimson            |
| Break O'Day. Sulphur<br>White. | Mrs. I-de Warner. Pink.             |
| Copper. Copper Shade.          | Mrs. Furbush. Maroon.               |
| Candeur. White.                | Manzanita. Shade of<br>Terra Cotta. |
| Crepsecule. Yellow.            | Mrs. John T. Scheepers.<br>Golden.  |
| Cuban Giant. Crimson.          | Minnie McCollough.<br>Orange.       |
| Dreers White. White.           | Mrs. Leo Neissen. Scarlet.          |
| Dainty. Pink.                  | Mrs. J. G. Cassett. Pink.           |
| Delice. Pink.                  | Mrs. J. H. Dick. Yellow.            |
| Dr. Tevis. Bronze.             | Nibelungenhort. Rose.               |
| Fordhook White. White.         | Pride of California.<br>Crimson.    |
| Fordhook Beauty. Red.          | Patrick O'Mara. Yellow.             |
| Flamingo. Scarlet.             | Princess Juliana. White.            |
| Golden Rose. Yellow.           | Queen Elizabeth. Rose.              |
| Gloaming. Orange.              | Queen Mary. Pink.                   |
| Hortulanus Witte. White.       | Rose Pink. Pink.                    |
| Insulinde. Golden.             | Red Cross. Red.                     |
| J. W. Fellans. Yellow.         | Svangeline. White.                  |
| J. H. Jackson. Crimson.        | South Pole. White.                  |
| Jeane Charment. Lavender.      | Sylvia. Pink.                       |
| King of Commerce. Golden.      | Souv. de Gustav Doazon.<br>Red.     |
| Kriemhilde. Rose Pink.         | Vivian. Pink with White.            |
| Lawine. White.                 | White Swan. White.                  |
| Libelle. Purple.               | Wm. Agnew. Red.                     |
| Mina Burple. Scarlet.          |                                     |
| Mrs. Wm. Marshall.             |                                     |
| Maude Adams. White.            |                                     |
| Mrs. C. H. Breck. Yellow       |                                     |

Prices on all varieties, 35c each; 10 to 29 tubers (root division), 30c each; 30 to 299 tubers, 25c each.

*Dahlias are Popular as Cut Flowers*

DAHLIAS (Continued)

HARRISON-GROWN DAHLIAS IN MIXTURE

An assortment of some of the choicest specimen varieties of Show, Fancy, Cactus, Pompon, Decorative, Single and Peony flowered classes, in their varying types and colors.

1 to 9 tubers (root division), 20c each; 10 to 29 tubers, 15c each; 30 to 299 tubers, 10c each; 300 to 1000 tubers, 8c each.

GLADIOLUS

Mammoth Size Bulbs.

20c each; 10 to 29 bulbs, 15c each; 30 to 299 bulbs, 11c each.

- America, Large. Lavender, Pink.
- Flora. Yellow Extra.
- Halley. Salmon Pink.
- Hereda. Mauve.
- Le Marechal Foch. Appleblossom Pink.
- Mrs. Francis King. Rose and Scarlet Blotch.
- Mrs. Frank Pendleton. Bright Rose, Crimson Blotch.
- Odin. Salmon Rose.
- Panama. Deep Rose.
- Peace. White.
- Rose Pearl. Soft Rose.
- Schwaben. Yellow.
- Vesta Tilley. White and Lavender.
- White City. Largest White.
- Wildrink. Light Pink.

EXTRA RAINBOW MIXTURE (All Colors)

10c each; 80c per 10; \$7.00 per 100.

PEONIES

Double Flowered Herbaceous Type.

- Alexander Dumas—Deep pink.
- Duc de Wellington—White with sulphur center.
- Duchess De Nemours—A magnificent flower, white crown, creamy color, free from spots or flecks of other colors. Blooms large, double, and produces freely. Desirable for massing. Fragrant.
- Edulis Superba—Rosy pink, sometimes striped carmine. Very early.
- Festiva Maxima—Probably the most popular Peony in existence. Center white, with here and there a fleck of crimson. Large and fragrant. Vigorous and free bloomer.
- Jeanne d'Arc—Pink-colored flower, early mid-season bloomer.
- Madame de Verneville—Blush when opening, changes to pure white, with many distinct carmine flecks. Blooms large and full, produces freely, and delicately.
- Marechal Vaillant—Red.
- Philomele—Rose-colored flower, mid-season bloomer. Strong, 3 to 5 eye divisions. 50c each root; 10 to 29 roots, 45c each; 30 to 299 roots, 40c each.

PEONIES (Group No. 2)

- Aurore**—Lilac white flowers, semi-rose type. Late bloomer.  
**Avalanche**—Large compact white flowers, profuse bloomer.  
**Delachei**—Red, rose type flower, a good old variety.  
**Germaine Bigot**—Pink flowers, dwarf type, mid-season bloomer.  
**Felix Crousse**—A brilliant red peony. Large blooms, typical bomb-shape and quite fragrant. Plants strong and bloom freely.  
**Mme. Geissler**—Rose pink color, mid-season bloomer.  
**M. Du Pont**—White.  
**Marguerite Gerard**—Pink flowers, changing to creamy white.  
**Mme. Ducel**—Pink flowers, very desirable as a cut flower.  
**President Roosevelt**—Red.  
**Susette**—Light rose pink color.  
**Umbellata Rosea**—Earliest light pink. Fragrant and fine.  
 Strong 3 to 5 eye divisions, 75c each; 10 to 29 roots, 65c each.

PEONIES (Group No. 3)

- Baroness Schroeder**—White flowers, blooms for a long period.  
**La Rosiere**—Creamy white, semi-double type flowers, mid-season bloomer.  
**La Perle**—Pink blooms, fading to white.  
**Sarah Bernhardt**—Large pink flowers, very vigorous grower.  
 Strong 3 to 5 eye divisions, \$1.00 each; 10 to 29 roots, 90c each.

HARDY PERENNIALS

	1 to 9 Plants	10 to 29 Plants
<b>BLEEDING HEART</b> ( <i>Dicentra spectabilis</i> )	\$.60	\$.50 each
Rose colored flowers in drooping spikes.		
<b>CHRYSANTHEMUMS</b>		
Glory of Seven Oaks (Yellow).....	\$.25	\$.20 each
White Doty (Pure White).....	.25	.20 each
<b>COLUMBINES</b> ( <i>Aquilegia</i> )		
American (Red and Yellow)		
( <i>Aquilegia canadensis</i> ) .....	\$.25	\$.20 each
Colorado Columbine (Blue)		
( <i>Aquilegia caerulea</i> ) .....	.25	.20 each
Golden Columbine (Yellow)		
( <i>Aquilegia chrysantha</i> ) .....	.25	.20 each
<b>COREOPSIS GOLDEN WAVE</b> (Yellow)		
( <i>Coreopsis lanceolata grandiflora</i> ).....	\$.25	\$.20 each
<b>FOXGLOVE</b> ( <i>Digitalis Glovineflora</i> )		
(White or Purple).....	\$.25	\$.20 each

HARDY PERENNIALS (Continued)

1 to 9      10 to 29  
Plants      Plants

BLANKET FLOWER (Deep Red with Yellow Border. (Gaillardia grandiflora). .....\$ .25 \$ .20 each

HOLLYHOCKS (Althea rosea)

Double flowers, colors pink, white, yellow and red.....\$ .25 \$ .20 each

IRIS (Fleur-de-lis)

German Iris (Iris germanica)

Helge (Yellow with pearl shading)....\$ .20 \$ .15 each

Mrs. Alan Gray (Lavender, pink)..... .20 .15 each

Nivelungen (Violet, purple)..... .20 .15 each

JAPANESE IRIS (Iris kaempferi)

Azure (Blue) ..... .35 \$ .30 each

Patrocle (Dark Reddish, Violet)..... .35 .30 each

LARKSPUR (Delphinium)

Belladonna (Light Blue).....\$ .25 \$ .20 each

Bellamosa (Dark Blue)..... .25 .20 each

Chinese alba (White)..... .25 .20 each

Gold Metal Hybrid (Mixed Colors)..... .30 .25 each

LANTERN PLANT (Physalis)

Chinese Lantern Plant (Physalis francheti) .....\$ .25 \$ .20 each

MALLOW MARVELS (Hibiscus)

Mixed Colors—a possibility of Red, Pink or White, or all.....\$ .25 \$ .20 each

PHLOX

Jules Sandeau (Pink).....\$ .25 \$ .20 each

Antonin Mercie (Blue)..... .25 .20 each

Mrs. Jenkins (White)..... .25 .20 each

SHASTA DAISY

Alaska (Large White Blossoms)..... \$ .25 \$ .20 each

SWEET WILLIAM (Dianthus barbatus)

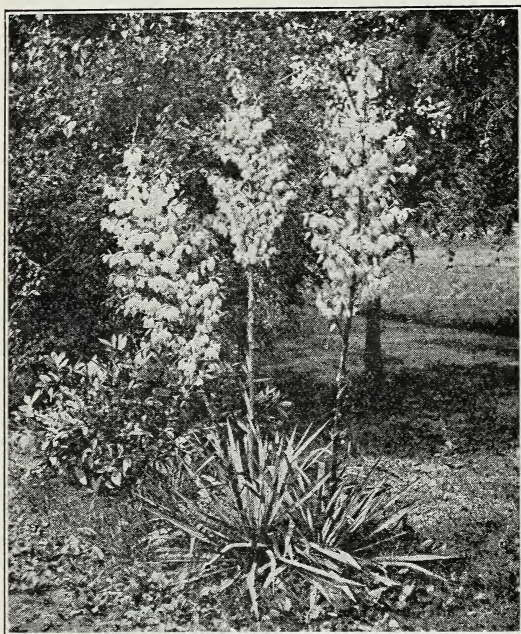
Suttons (Mixed Shades).....\$ .25 \$ .20 each

TRITOMA—Red Hot Poker

Pfitzeri (Orange-Scarlet Color).....\$ .30 \$ .25 each

*Plant a Perennial Garden*

HARDY PERENNIALS (Continued)



Yucca or Adams Needle.

**YUCCA OR ADAMS NEEDLE**

(*Yucca filamentosa*). White.

2 yr. plants.....	\$ .50	\$ .40 each
3 yr. plants.....	.60	.50 each

---

*When Buying from Harrisons Nurseries you are  
Dealing with an Old Reliable Firm of  
Three Generations of Harrisons*

**DARWIN TULIPS**

	Per doz. Bulbs	Per 100 Bulbs
<b>Bartigon</b> —Fiery Crimson with Pure White Base .....	\$.80	\$6.00
<b>Centenaire</b> —Violet Rose with Large Blue Base .....	.75	5.00
<b>Farncombe Sanders</b> —Scarlet with Clear White Base.....	.75	5.00
<b>Inglescombe Yellow</b> —Glossy Canary Yellow .....	.90	7.50
<b>Jaune d'Oeuf</b> —Golden, Outside Petals Shaded Apricot .....	.80	6.00
<b>Le Notre</b> —Beautiful Pink, Excellent for Forcing .....	.75	5.00
<b>Madame Krelage</b> —Bright Lilac Rose....	.75	5.00
<b>Panorama</b> —Rich Chestnut Red.....	.80	6.00
<b>Phillippe de Comines</b> —Purple-Maroon.....	.75	5.00
<b>Pride of Haarlem</b> —Rosy Carmine with Blue Base.....	.65	4.00
<b>Princess Elizabeth</b> —Clear Deep Pink, White Base.....	.75	5.00
<b>Sieraad van Flora</b> —Rose Colored. Good Forcer .....	.65	4.00
<b>William Copland</b> —Lilac-Rose Colored.....	.75	5.00
<b>William Pitt</b> —Very Dark Crimson, White Base .....	.80	6.00
<b>Mixed Colors of Tulips</b> .....	.50	3.50

**HYACINTHS**

(Selected First Size)

30c each; \$3.00 per doz.; \$20.00 per 100.

**City of Harlem**—Finest of Yellows.

**Gertrude**—Deep Rose Pink.

**Grand Maitre**—Deep Lavender-Blue.

**L'Innocence**—Pure White.

Mixed Colors of Hyacinths—20c each; \$2.00 per doz.; \$15.00 per 100. Possibility of White, Pink, Lavender, Blue and Yellow .

**CROCUS**—Among the earliest bulbs to flower. Bulbs may be left in ground throughout year.

Mixed Varieties of Crocus. Assortment of Colors.  
50c per doz.; \$3.00 per 100.

*You Will Never Regret Planting a Tulip Bed*

FRUIT TREES



One-year Budded Apple Trees Are Popular with the Commercial Orchardists.

## HARRISON GROWN APPLE TREES

Harrison Grown apple trees are budded direct from bearing commercial orchards of superior strains on French Grown apple seedlings. Harrison trees will bear sooner and bear heavier than the average trees all of their lives. Our favorable soil and climate enables us to produce larger, smoother and better quality trees than can be grown in the average nursery sections.

### PRICES FOR APPLE TREES

	1 to 9 Trees	10 to 29 Trees	30 to 299 Trees	300 to 599 Trees	600 to 3000 Trees
1 to 2 ft.....	\$ .20	\$ .17	\$ .15	\$ .13	\$ .10 each
2 to 3 ft.....	.30	.25	.20	.18	.15 each
3 to 4 ft.....	.35	.30	.25	.22	.20 each
4 to 5 ft.....	.40	.35	.30	.27	.25 each
5 to 6 ft.....	.60	.50	.40	.35	.32 each

### BUDS CUT FROM BEARING COMMERCIAL ORCHARDS, BUDED ON FRENCH ROOTS

SEE REDUCED PRICES FOR 600 to 3000 TREES  
OVER 3000 TREES WRITE FOR SPECIAL PRICES

CAN BE ASSORTED APPLES, PEACHES, CHERRIES, PEARS OR OTHER FRUIT TREES.

**BALDWIN**—Winter, large, bright red, yields big crops, good keeper. There are more bearing trees of Baldwin in New York, Northern Pennsylvania, the New England States and Canada than any other commercial variety.

**Ben Davis**—Winter, large, extra good color, one of the best keepers. Popular as an export apple to Europe and South America.

**Benoni**—Summer, red, productive.

**Cortland**—Fall, red, new variety. Cross between McIntosh Red and Ben Davis.

**DELICIOUS**—Winter, red, large, very highly flavored. One of the most popular and highest priced apples grown. Be sure to include in your commercial orchard.

---

*We Select Our Buds from Our Own  
Bearing Orchards*



APPLE TREES (Continued)

- Duchess (Duchess of Oldenburg)**—Summer, large, red striped, heavy bearer.
- Early Harvest**—Summer, medium size, yellow.
- Fameuse (Snow)**—Fall, medium size, crimson skin with white flesh. Popular in Canada.
- GANO (BLACK BEN DAVIS)**—Winter, bright red, medium to large, very good keeper, prolific bearer. Popular export variety. Has excellent shipping qualities.
- Gravenstein**—Early fall, large streaked and splashed with red.
- GRIMES GOLDEN**—Fall, medium size, yellow, heavy bearer, excellent flavor, popular in Maryland, West Virginia and Virginia. The best pollinizer for Stayman Winesap and many other varieties.
- Hubbardston (Hubbardston None-Such)**—Winter, large, red striped, bears well every year.
- JONATHAN**—Fall, bright red, medium size, excellent quality.
- King David**—Fall, very dark red, medium size, good flavor.
- King (King of Tompkins County)**—Winter, red, large. Grown mostly in New York.
- Liveland Raspberry**—Summer, pinkish red stripe, medium size.
- Mammoth Black Twig**—See Paragon for description.
- McINTOSH RED**—Fall, red, large, flesh white, juicy and the best flavored apple grown. McIntosh Red is the highest priced apple on the leading American markets. Every commercial orchard should include a large planting of McIntosh.
- Maidens Blush**—Summer, large, red blush.
- Nero**—Winter, bright red, large, extra good keeper, fine flavor.
- NORTHERN SPY**—Winter, extra large, bright scarlet red with yellow markings. Good keeper, very desirable for cooking purposes and brings high prices on the markets. Thrives best in New England and other Northern States.
- North Western Greening**—Fall, very large, greenish yellow, good shipper. Popular for baking.
- PARAGON OR MAMMOTH BLACK TWIG**—Winter, extra large, dark red, one of the best keepers. Good flavor, fine shipper.

APPLE TREES (Continued)

**Red Astrachan**—Summer, medium size, red striped, heavy bearer.

**ROME BEAUTY**—Winter, extra large red, excellent late keeper, good flavor. Rome is a high priced apple and should be more extensively planted by the Eastern orchardists.

**Red June**—Summer, medium size, red.

**Red Gravenstein**—An improvement on the regular Gravenstein, with better and higher red color.

**RHODE ISLAND GREENING** — Winter, extra large greenish yellow. Should be included in all commercial orchards in New England and other Northern States. Fruit always in demand and brings good prices.

**Roxbury Russet**—Winter, large, yellow brown russet. Best variety of all Russets.

**Smokehouse**—Fall, large, yellow-green mottled with dull red, fine flavor.

**Stark**—Winter, extra large, greenish yellow with red blush. Good keeper. Popular as a baking apple.

**STAYMAN WINESAP**—Winter, large, bright red, extra good flavor, juicy and quality ranking with the best. Fine keeper and one of the most popular apples on the large Eastern markets, demanding high prices. Planted extensively in the East.

**Sweet Bough**—Summer, pale yellow, large, tender, sweet.

**Wolf River**—Winter, extra large, red.

**WILLIAMS EARLY RED**—Summer, medium to large size, bright red, good quality. Best red summer variety grown and a real money-maker. All commercial orchards should include the Williams.

**Winter Banana**—Winter, large, yellow with red blush.

**Wealthy**—Summer, medium, red. Best summer export variety, very hardy and can be grown where any variety of apple thrives.

**WINESAP**—Winter, medium size, dark red, well colored, highly flavored, one of the best and longest keepers. Popular box apple. Brings high prices during the late winter and spring months.

---

*Harrison Grown Apple Trees are Known to be Dependable from Coast to Coast*

APPLE TREES (Continued)

**YELLOW TRANSPARENT**—Very early summer, medium size, greenish yellow, very heavy bearer, always in demand for pie and cooking purposes on account of being the first early variety of any merit on the markets. It brings very high prices, especially when grown in Tennessee, Maryland, Delaware, Virginia, Illinois and Indiana.

**Yellow Belleflower**—Winter, large, yellow, good flavor.

**YORK IMPERIAL**—Winter, bright red, medium to large size, very heavy bearers, good quality, long keeper. The most popular export apple for European markets. One of the best money-makers. York Imperial should be planted in all commercial orchards in sections south of Central Pennsylvania.

CRAB APPLES

**Florence**—Summer, carmine red, very hardy.

**Hyslop**—Crimson color, large crab apple.

**Martha**—Beautiful glossy yellow, good size, tart.

**Transcendent**—Best of all crab apples, good size, yellow skin, striped with red.

**Whitney**—Largest crab apple, smooth, glossy, green, splashed with red, good bearer.

DWARF APPLE TREES

Budded on French Seedlings.

Dwarf apple trees bear at an early age and are suitable for small gardens.

Baldwin	Stayman Winesap
Delicious	Williams Early Red
Grimes Golden	Winesap
Jonathan	York Imperial
McIntosh Red	

PRICES FOR DWARF APPLE TREES

2 to 3 ft.....	@ \$ .50 each
3 to 4 ft.....	@ .60 each
4 to 5 ft.....	@ .75 each

---

*Visit Our Large Commercial  
Apple Orchards*

*See the Trees from which We Cut Our Buds*

## HARRISON GROWN PEACH TREES

BUDS CUT FROM BEARING commercial orchards of superior strains. Harrison peach trees are favorably known in every state in the Union. Many of the largest and finest peach orchards in America are planted with Harrison Grown Trees. We have been growing peach trees for forty-four years.

### NOTE OUR NEW LOW PRICES

	1 to 9 Trees	10 to 29 Trees	30 to 299 Trees	300 to 599 Trees	600 to 3000 Trees
1 to 1½ ft.	\$.10	\$.09	\$.07	\$.06	\$.05 each
1½ to 2 ft.	.15	.12	.10	.08	.07 each
2 to 3 ft.	.22	.17	.15	.12	.10 each
3 to 4 ft.	.30	.25	.20	.17	.14 each
4 to 5 ft.	.35	.30	.25	.22	.18 each
5 to 6 ft.	.40	.35	.30	.27	.24 each

SEE REDUCED PRICES FOR 600 to 3000 TREES  
 OVER 3000 TREES WRITE FOR SPECIAL PRICES  
 CAN BE ASSORTED PEACHES, APPLES, CHER-  
 RIES, PEARS, OR OTHER FRUIT TREES.

### LIST OF PEACH VARIETIES

**Alexander**—Very early, white.

**Beer Smock**—Late, yellow, freestone, high flavor.

**BELLE OF GEORGIA (BELLE)**—Mid-season, white, freestone, large size, extra fine flavor, good keeping qualities, prolific bearer. The best known white peach for commercial orchards. Always include Belle of Georgia in your plantings.

**Berks Favorite**—Late, white, new variety.

**Bernard**—Mid-season, yellow, juicy, rich, very productive.

**BRACKETT**—Ripens about a week later than Elberta and fruit similar to Elberta, but of better flavor. Large size, freestone, yellow, highly flavored. The best commercial or family peach to plant so as to extend the period of ripening in which the Elberta is so popular. Good shipper, be sure to include in your plantings.

**Captain Ede**—Mid-season, freestone, yellow, large.

**Cumberland**—Early, semi-freestone, white—new variety.

**Crawford Early**—Midseason, freestone, yellow, good quality, prolific bearer, one of the old-time favorites.

**Champion**—Early mid-season, white, freestone, very large—excellent home orchard peach.

**CARMAN**—Early, white, semi-freestone, medium size, heavy bearer, good red blush. Extensively planted, early commercial variety.

**CRAWFORD LATE**—Very large size, yellow, late free-stone, high flavor.

PEACH TREES (Continued)



Elberta Peaches  
Late Senator Orlando Harrison and Late  
George A. Harrison.

**ELBERTA**—The world's best money-making Peach. Be sure to plant heavy to Elberta. Buds cut from the nationally known Harrisons' twenty-six-year-old bearing commercial Elberta orchard. This is the best strain of Elbertas known. Ripens middle of August. The old reliable peach, of which more are planted and from which more money has been made than from any other variety. The fruit is large to extra large; golden yellow, with brilliant shades of red; firm, juicy, rich, sweet. Tree vigorous, sturdy, hardy; thrives in widely differing localities. For many years Elberta has been the standard market Peach both in Southern and Northern markets, and it has a place in the estimation of commercial growers and the users of Peaches which will be hard to fill with any other variety; in fact, the Elberta is the one variety that every fruit-stand customer seems to know. No other Peach has ever been introduced which fills all the requirements of a commercial Peach with such success as Elberta, in size, appearance and quality.

---

*Visit Our Twenty-six-year-old Large Bearing  
Commercial Elberta Peach Orchard*

PEACH TREES (Continued)



Cultivation in One of Harrisons' Nurseries, Famous Bearing Commercial Peach Orchards.

**EARLY ELBERTA**—Early mid-season, ripens about a week earlier than Elberta, yellow, freestone and somewhat similar to Elberta.

**Engles Mammoth (Engle)**—Late, large, yellow freestone, resembles Crawford Late.

**Early Rose**—Very early, white, cling, small to medium size, prolific bearer. The most popular new early variety in the Georgia commercial peach orchards.

**Eclipse**—Early, yellow, freestone, new variety.

**Fitzgerald**—Late, large, yellow, freestone.

**Fox Seedling (Fox)**—Late, large, white, freestone, good for canning.

**Frances**—Late, yellow, freestone, medium size.

**Greensboro**—Early, extra large, white, freestone, excellent for roadside markets.

**Gold Drop**—Late, very hardy, heavy bearer, medium size, yellow, freestone.

**HILEY (Hiley Belle)**—Early white, freestone, medium size, highly red colored, extra good flavor. Prolific bearer—one of its most striking characteristics is that it will withstand long shipments in refrigerator cars of a thousand or more miles. There are more Hiley trees planted in North Carolina, South Carolina and Georgia than any other white commercial variety.

**Hill's Chili**—Late, yellow, medium size, freestone, hardy.

---

*Come to Berlin and Select Your Own Trees*

PEACH TREES (Continued)

- J. H. HALE (HALE)**—Mid-season, extra large, yellow freestone, fine flavor. Ripens about two or three days ahead of Elberta. Our Hales are propagated direct from the original strain, buds being cut from our own bearing commercial orchard. Hale is the most popular of all the new varieties and has been extensively planted in recent years. A few Elbertas should be planted along with Hale for cross-pollination.
- Iron Mountain**—Late, white, freestone.
- Kalamazoo**—Mid-season, large, golden yellow, freestone, fine quality. Popular in Michigan.
- Krummels (Krummels Late October)**—Late, large, yellow, freestone, one of the best late varieties.
- Lemon Free**—Medium late, lemon shaped, large, yellow freestone, excellent quality. Fine for canning.
- Lemon Cling**—Late, large, cling, yellow.
- MAMIE ROSS**—Early, semi-freestone, large, white, good flavor. Mamie Ross is better and larger than Carman and is replacing Carman in commercial orchards.
- Matthews Beauty**—Mid-season, yellow, freestone, good flavor.
- Mayflower**—Very early, cling, small size, white.
- Muir**—Yellow. California canning peach.
- Mountain Rose**—Early to mid-season, large, white freestone, good flavor. Old time variety.
- Niagara**—Mid-season, very large, yellow, freestone.
- New Prolific**—Late mid-season, large, yellow, freestone.
- Old Mixon Free**—Mid-season, large, white, freestone.
- Phillips Cling**—Late, large, cling, yellow. Popular California canning peach.
- Primrose**—Mid-season, freestone, yellow, new variety.
- Ray**—Mid-season, large, white, freestone, excellent flavor, highly red colored. One of the best peaches for home use or roadside markets.
- ROCHESTER**—Early, mid-season, large size, yellow freestone, good flavor, prolific bearer. Popular in Western New York.
- Radiance**—Early, white freestone—new variety.
- Red Bird Cling (Early Wheeler)**—Very early, large, white, cling with bright red blush.
- Salberta**—Late, large, yellow, freestone. Popular in Ohio.
- Salway**—Late, extra large, yellow, freestone.
- Shippers Late Red**—Late, large, freestone, yellow flesh with brilliant red blush. A new variety of prominence in West Virginia.
- South Haven**—Early mid-season, large, yellow freestone, heavy bearer. A new Michigan variety.
- 

*We Allow 5% Discount for Cash—  
Order Early*

PEACH TREES (Continued)

**SLAPPEY**—Early mid-season, yellow freestone, medium to large size, extra good flavor. The best early yellow variety grown.

**Triumph**—Early, yellow, freestone.

**Yellow St. John**—Early, medium size, freestone, heavy bearer.

**White Heath Cling (Heath)**—Late, very large, white, cling, a favorite for canning.

**Wilma**—Late, large, yellow, freestone.

HARRISON GROWN PEAR TREES

Budded on Blight Resistant Pear Seedlings.

	1 to 9 Trees	10 to 29 Trees	30 to 299 Trees	300 to 599 Trees	600 to 3000 Trees
1 to 2 ft.....	\$ .30	\$ .25	\$ .20	\$ .15	\$ .13 each
2 to 3 ft.....	.35	.30	.25	.20	.18 each
3 to 4 ft.....	.40	.35	.30	.25	.22 each
4 to 5 ft.....	.50	.40	.35	.30	.27 each
5 to 6 ft.....	.60	.50	.40	.35	.32 each

**Anjou (Buerre d' Anjou)**—Fall, large, greenish yellow, prolific bearer, good flavor and fine keeper.

**BARTLETT**—Summer, large, golden yellow, buttery, delicious and melting rich, juicy flavor. Very popular for canning. Highly desirable for commercial purposes. This variety is the most extensively planted.

**Clapp's Favorite**—Summer, large, fine pale lemon yellow, good quality.

**Duchess (Duchess d' Angouleme)**—Fall, most dependable bearer, very large, greenish yellow, rich, excellent flavor.

**Garber**—Fall, very large, productive, fine for canning. Garber used as pollinizer for Keiffer and other varieties.

**KIEFFER**—Fall, large size, handsome appearance, very prolific, good keeper, suitable for canning. Has best shipping qualities of any pear.

**Lawrence**—Winter, medium size, yellow with brown dots, aromatic. Has great merits for commercial orchards.

**SECKEL**—Fall, small, rich yellow brownish red cheek, flesh fine grained, sweet, juicy, melting, buttery. One of the highest flavored pears known.

HARRISON GROWN CHERRY TREES

PRICES OF SOUR CHERRIES.

	1 to 9 Trees	10 to 29 Trees	30 to 299 Trees	300 to 599 Trees	600 to 2000 Trees
1 to 2 ft.....	\$ .40	\$ .35	\$ .30	\$ .25	\$ .20 each
2 to 3 ft.....	.45	.40	.35	.30	.25 each
3 to 4 ft.....	.50	.45	.40	.35	.30 each
4 to 5 ft.....	.60	.50	.45	.40	.35 each



CHERRY TREES (Continued)



Large Montmorency Cherries. Best Commercial Variety.

**EARLY RICHMOND**—Early, summer, sour, bright red, medium size, exceedingly productive. Best early sour cherry grown.

**Dyehouse**—Very early, sour, good canning variety.

**English Morello**—Mid-season, blackish red when full ripe.

**May Duke**—Early, sour, red. Popular old variety.

**LARGE MONTMORENCY**—Mid-season, sour, red, large, very prolific bearer. Best commercial variety of sour cherries grown. Used extensively for commercial canning.

PRICES OF SWEET CHERRIES

	1 to 9 Trees	10 to 29 Trees	30 to 299 Trees	300 to 599 Trees
2 to 3 ft.....	\$ .50	\$ .45	\$ .40	\$ .35 each
3 to 4 ft.....	.60	.50	.45	.40 each
4 to 5 ft.....	.70	.60	.50	.45 each
5 to 6 ft.....	.80	.70	.60	.55 each

**Bing**—Dark brown or black, large, sweet, high flavor. Famous variety of Oregon and Washington.

**BLACK TARTARIAN**—Very large, sweet, purplish black color, juicy, rich flavor, heavy bearer and most profitable sweet variety grown.

**CHERRY TREES (Continued)**

- Governor Wood**—Large, light yellow, marked with red, sweet flavor.
- Napoleon (Royal Anne)**—Large, pale yellow with bright red cheek, sweet, excellent flavor, prolific bearer. Famous canning variety of the Pacific Coast.
- Windsor**—Large, sweet, almost black, fine quality. Valuable late variety.
- Yellow Spanish**—Large, sweet, yellow with red tinge. One of the most beautiful and popular of the light colored cherries. Heavy bearer.
- Lambert**—Extra large, sweet, jet black, high flavor, enormous crops, good shipper. Popular commercial variety.
- Schmidt (Schmidt's Bigarreau)**—Large, sweet, deep black, tender, fine flavor.

**HARRISON GROWN PLUM TREES**

**PRICES OF PLUM TREES**

	1 to 9 Trees	10 to 29 Trees	30 to 299 Trees	300 to 599 Trees
1 to 2 ft.....	\$ .30	\$ .25	\$ .20	\$ .15 each
2 to 3 ft.....	.35	.30	.25	.20 each
3 to 4 ft.....	.40	.35	.30	.25 each
4 to 5 ft.....	.50	.40	.35	.30 each
5 to 6 ft.....	.60	.50	.40	.35 each

- Abundance**—Early, large, lemon yellow, hardy, productive.
- BRADSHAW**—Mid-season, large, dark violet red, juicy, excellent flavor, desirable for canning. Becoming more popular as a commercial variety.
- BURBANK**—Mid-season, large cherry red, high quality, very productive. Popular commercial variety.
- German Prune**—Late, large, dark purple, sweet. Good for canning and drying.
- Italian Prune (Fellenburg)**—Late, medium size, dark purple, delicious. Fine for drying.
- Lombard**—Early mid-season, medium size, roundish, violet red, heavy bearer. Fine for home gardens.
- Red June**—Very early, medium size, deep vermilion red, fine quality.
- SHROPSHIRE DAMSON**—Late, medium size, dark purple, very productive. The best for preserving. The popular old fashioned damson variety.
- Wickson**—Late, very large, deep maroon red covered with white bloom, flesh firm, meaty, yellow, rich, aromatic, cling. Good keeper and shipper.

## HARRISON GROWN APRICOT TREES

	1 to 9 Trees	10 to 29 Trees	30 to 299 Trees
2 to 3 ft.....	\$ .40	\$ .35	\$ .30 each
3 to 4 ft.....	.60	.50	.40 each
4 to 5 ft.....	.80	.70	.60 each

**Alexander**—Early, prolific, freestone, orange with red blush, Russian variety. Hardy where Peaches cannot be grown.

**Moorpark**—Summer, early, yellow with red cheek, juicy, sweet, rich, freestone. Very productive, a European variety.

## QUINCE TREES

	1 to 9 Trees	10 to 29 Trees
2 to 3 ft.....	\$ .50	\$ .40 each
3 to 4 ft.....	.70	.60 each
4 to 5 ft.....	.90	.80 each

**Champion**—Late, very large, fine quality, long keeper. Good for preserving.

**ORANGE**—Late, large, bright yellow, excellent flavor, productive, and rarely fails to produce a crop. Best canning variety. Popular Wayne County (New York) strain.

## FIGS

**Brown Turkey**—Medium to large, coppery brown, flesh white, solid. Excellent variety. Hardy as far north as Mason-Dixon line.

2 to 3 ft.....	\$1.25	\$1.00 each
----------------	--------	-------------

## NUT TREES

ARE ORNAMENTAL AND PROFITABLE.

**Butternut** (*Juglans cinerea*)

Large nut with a sweet, oily nutritious kernel.

	1 to 9 Trees	10 to 29 Trees
2 to 3 ft. ....	\$1.50	\$1.25 each
3 to 4 ft. ....	2.00	1.75 each

**American Sweet Chestnut** (*Castanea dentata*)

Large tree when matured. Nut of good quality, prolific bearer.

2 to 3 ft. ....	\$1.50	\$1.25 each
3 to 4 ft. ....	2.00	1.75 each

**Spanish Chestnut** (*Castanea sativa*)

Very large nuts, demanding good prices. Handsome round headed tree.

2 to 3 ft. ....	\$1.50	\$1.25 each
3 to 4 ft. ....	2.00	1.75 each

NUT TREES (Continued)

American Filbert (American Hazel Nut) (*Corylus americana*)

Nuts are of fine flavor. Prefer moist soil.

	1 to 9 Trees	10 to 29 Trees
2 to 3 ft. ....	\$1.50	\$1.25 each

Pecan (*Hicoria pecan*) (Seedlings from selected Nuts)

Long lived, splendid shade trees as well as profitable nut tree.

12 to 18 in. ....	\$ .35	\$ .30 each
5 to 6 ft. ....	3.00	2.50 each
7 to 8 ft. ....	4.00	3.50 each
8 to 10 ft. ....	5.00	4.50 each

Indiana Pecan

Hardy type, high flavored, thin shelled nuts.

2 to 3 ft. ....	\$2.50	\$2.25 each
-----------------	--------	-------------

Money Maker Pecan

Bears early age, prolific, medium size nuts of good quality.

2 to 3 ft. ....	\$2.50	\$2.25 each
-----------------	--------	-------------

Schley Pecan

Medium to large nuts oblong, thin shell, rich flavor. Good grower, one of the best.

2 to 3 ft. ....	\$2.50	\$2.25 each
-----------------	--------	-------------

Stuart Pecan

Large to very large nuts, oblong, shell of medium thickness, full, plump kernal of rich, sweet flavor. Excellent quality.

2 to 3 ft. ....	\$2.50	\$2.25 each
-----------------	--------	-------------

Black Walnuts (*Juglans nigra*)

Rapid grower, spreading branches, large delicious nuts—prolific bearer.

2 to 3 ft. ....	\$1.00	\$ .90 each
3 to 4 ft. ....	1.50	1.35 each
4 to 5 ft. ....	2.00	1.75 each
10 to 12 ft. ....	5.00	4.50 each

English Walnut (*Juglans regia*)

Thin shelled, large, delicious nuts, producing heavy crops and demanding good prices. Most popular walnut grown, but will not grow in the North.

2 to 3 ft. ....	\$1.50	\$1.35 each
3 to 4 ft. ....	2.00	1.75 each

NUT TREES (Continued)

Japanese Walnut (*Juglans sieboldiana*)

Perfectly hardy, rapid grower, bears young and prolific, large, medium thin shelled nuts of good quality.

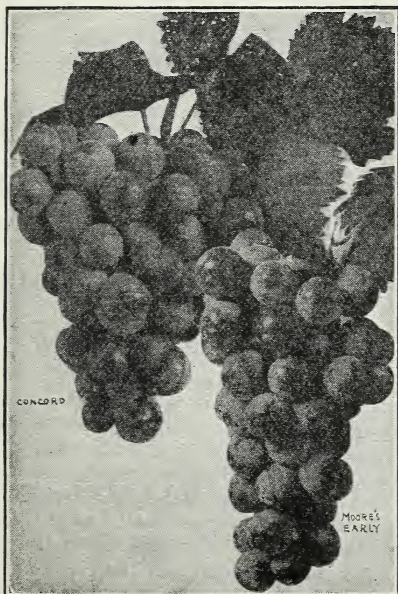
	1 to 9 Trees	10 to 29 Trees
2 to 3 ft. ....	\$1.50	\$1.25 each
3 to 4 ft. ....	2.00	1.75 each

HARRISON GROWN GRAPE VINES

Premier garden fruit. No part of the fruit garden yields are richer harvest than the vineyard.

**Agawam**—Deep red, large berries aromatic flavor.

**CONCORD**—Too well known to need much decription, as Concordes are grown in almost every home garden and vineyard. Probably it is the most popular variety and has an unusual wide range of territory. The big, dark purple bunches are most enticing and sell on sight. Best commercial variety.



GRAPE VINES (Continued)

- Catawba—Red, large clusters, medium size fruit.  
 Delaware—Bunches medium size, full of large red berries, which are sweet and of extra good quality. Ripens after Concord.  
 Moore's Early—Extremely dark purple, almost black. Bunches medium size, but the berries are large. The skin is thick, so that the bunches can be handled and shipped without serious damage. Early August.  
 Niagara—The best of the standard, light colored Grapes. The berries are greenish white, changing to pale yellow when fully ripe.  
 Worden—Resembles Concord and ripens about a week earlier.

TWO YEAR GRAPE VINES

	1 to 9	10 to 29	30 to 299	300 to 599	600 to 3000
Agawam .....	\$ .30	\$ .25	\$ .20	.....	.....
Concord .....	.15	.12	.10	\$ .08	\$ .06
Catawba .....	.30	.25	.20	.....	.....
Delaware .....	.30	.25	.20	.....	.....
Moore's Early .....	.25	.20	.15	.12	.10
Niagara .....	.30	.25	.20	.15	.12
Worden .....	.30	.25	.20	.....	.....

THREE YEAR GRAPE VINES—EXTRA LARGE

	1 to 9	10 to 29	30 to 299	300 to 599	600 to 3000
Concord .....	\$ .15	\$ .12	\$ .10	\$ .08	\$ .06
Moore's Early .....	.25	.20	.15	.12	.10

HARRISON GROWN ASPARAGUS

The preparation of the bed should be made in a most thorough manner, as it is to last for a number of years. A deep, sandy loam with an abundance of decayed organic matter is the best soil.

Planting is best done in the spring as early as the soil can be worked in good condition. Run furrows with plow and clean out with shovel to a depth of 1 foot. Place well-rotted stable manure thickly in the trench, then just a slight covering with the soil, on top of which place the crowns about 2 feet apart, spread out the roots and cover them very shallow. After the plants start to grow, work the soil to them gradually until it

**ASPARAGUS (Continued)**

becomes level. The plants should be frequently cultivated and kept clean. The dead tops should be mown off in the fall and furrows should be thrown on the rows from each side and the middles cleaned out. This will cause the bed to warm up early in the spring.

**BARR'S MAMMOTH**—Early, large, fast grower. An old favorite.

**Conover's Colossal**—A rapid growing variety and often ready for cutting the second year.

**Giant Argenteuil**—Earliest, extra large stalks, rich and tender.

**PALMETTO**—Ten days to two weeks earlier than most other varieties. The stalks vary from dark to light green, are quite large and of exceptionally good quality. The old reliable commercial variety.

**WASHINGTON**—Rust Resistant, large stalks, good commercial variety.

**PRICES TWO-YEAR GROWN**

50c for 10; \$2.00 for 100 crowns; \$10.00 per 1,000 crowns; 2,000 to 5,000 at \$9.00 per 1,000 crowns; 5,000 to 25,000 at \$8.00 per 1,000 crowns.

**Mary Washington**—60c for 10 crowns; \$2.50 for 100 crowns; \$12.00 per 1,000 crowns; 2,000 to 5,000, \$11.00 per 1,000 crowns; 5,000 to 25,000, \$10.00 per 1,000 crowns.

Mary Washington is the best and latest strain of Washington Rust Resistant Asparagus development. Grown from selected strains direct from Dr. Norton and Crocker.

**PLANT ASPARAGUS BY THE ACRE**

**BLACKBERRIES**

**Blowers**—Black, large berries, fine quality, very prolific, good shipper.

**Early Harvest**—Black, very early berry, ripening from 10 days to two weeks before any other. Bears full every year. Excellent quality, good size, a valuable berry for early market. Sells at fancy prices.

**ELDORADO**—Berries of enormous size and shiny, jet-black, vines are strong, vigorous, and rarely fail to produce abundant crops.

---

*Every Garden Should Include Small Fruits*

### BLACKBERRIES (Continued)

**Mersereau**—Brilliant black, very large berries, extra good quality, strong grower.

**Snyder**—Black, early, medium size, sweet berries. Enormously productive, old favorite commercial variety.

10 to 29 plants, 7c each; 30 to 299 plants, 5c each; 300 to 599 plants, 4c each; 600 to 3,000 plants, 3½c each.

### CURRANTS

**Fay (Fay's Prolific)**—Red, mid-season, large berries, good flavor. Excellent for jams, jellies and preserves.

**Wilder (President Wilder)**—Red, late, extra large, juicy berries, high quality. Best variety grown.

1 to 9 plants, 25c each; 10 to 29 plants, 20c each; 30 to 299 plants, 15c each.

### DEWBERRIES

**LUCRETIA**—Fruit jet-black, larger than other varieties. By many growers is considered as the best. Plant a strong grower and bears enormous crops.

10 to 29 plants, 4c each; 30 to 299 plants, 3c each; 300 to 599 plants, 2½c each; 600 to 3,000 plants, 2c each.

### GOOSEBERRIES

**Downing**—Large, handsome, pale green, good quality for table and cooking. Strong grower.

**Houghton**—Round, medium size, pale red, sweet, very good flavor; very prolific bearer.

1 to 9 plants, 25c each; 10 to 29 plants, 20c each; 30 to 299 plants, 15c each.

### RASPBERRIES

**Columbian**—Purple, very large, excellent for canning.

**CUMBERLAND**—Black, large, firm fruit, very heavy bearer. Popular commercial variety.

**CUTHBERT**—Crimson red, large conical berries, very hardy, strong grower, prolific bearer. Leading commercial variety.

**King**—Red, early, large berry, good shipper.

**Gregg**—Black, large, very productive. An old popular commercial variety.

**Latham**—Red, large berries, perfectly hardy, heavy bearer. Remarkable new variety.

**Plum Farmer**—Black, large, thick meated berries—entire crop matures about the same time.

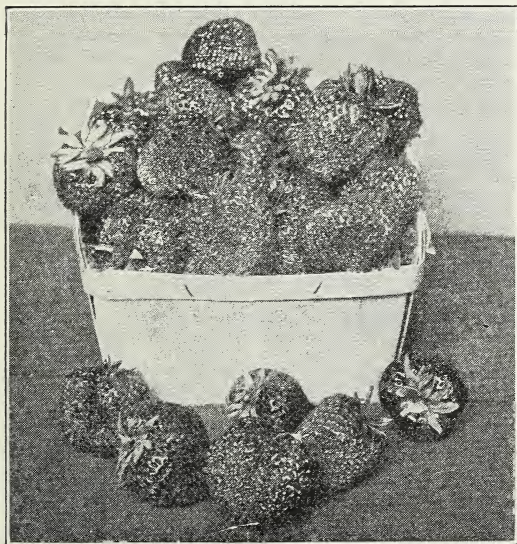


### RASPBERRIES (Continued)

**ST. REGIS (Ranere)**—Red, large berries, everbearing, fruit commences to ripen with the earliest and continues on the young canes until October and sometimes later. Attractive berries, firm, very prolific bearer, excellent shipper. Best commercial variety.

### PRICES ON RASPBERRIES

10 to 29 plants, 6c each; 30 to 299 plants, 5c each; 300 to 599 plants, 4c each; 600 to 3,000 plants, 3c each.



Luscious Strawberries.

### STRAWBERRIES

No home garden is complete without a collection of Strawberries. We have reduced the number of varieties, yet we have retained the cream of the list.

Fall Shipments start October 15th, Southern Shipments throughout winter. Spring Shipments any time customer desires until May 15th.

STRAWBERRIES (Continued)

STANDARD VARIETIES STRAWBERRIES

	25 Plants	100 Plants	500 Plants	1000 Plants
Gandy (Per), Klondike (Per), Missionary (Per).	\$ .25	\$ .70	\$2.50	\$4.00
Below Varieties .....	.35	.75	3.00	5.00
Aroma (Per)			Haverland (Imp)	
Big Joe (Per)			Lupton (Per)	
Bubach (Imp)			New York (Per)	
Cambells Early (Per)			Premier (Per)	
Chesapeake (Per)			Senator Dunlap (Per)	
Gibson (Parsons Beauty) (Per)			Warfield (Imp)	
Glen Mary (Per)			William Belt (Per)	
			Sample (Imp)	

To obtain best results alternate each two rows of Perfect Bloom with other varieties.

EARLY STRAWBERRIES

**Campbell's Early**—Has "made a hit" with growers in New Jersey, productive and profitable.

**Klondyke**—Uniform, shapely, rich dark red, mild and delicious, juicy and handsome; sell quickly. Plants are tall, compact, stalks strong; leaves light green. Abundant runners. Yields are wonderful. Blossoms are perfect, but do not fully fertilize themselves and need other sorts near. Name is suggestive of results often a gold mine. Our best paying early berry.

**Missionary**—Early, medium size; good color, fine flavor. Popular commercial variety in Florida and Eastern Shore of Maryland.

**Premier or Howard 17**—Extra early. Fruit large, deep red clear through to the center. For home use and markets.

**Warfield**—Early. Rampant grower, with many runners. Berries glossy, dark red, rich, exceedingly juicy.

MIDSEASON STRAWBERRIES

**Big Joe**—Brilliant red, with bright green calyx; flavor delicious, splendid for table or preserving.

**Bubach**—Large size and handsome color are its most valuable characteristics. Color is a beautiful bright red.

### STRAWBERRIES (Continued)

- Glen Mary**—Strong, upright, large, dark green foliage. Produces remarkable crops when planted in rich ground.
- Haverland**—Medium-early variety, fine appearance. Berries are medium to large, rich, bright red.
- Lupton**—In favor with Northern markets; good size; bright color.
- New York**—Popular for home gardens and nearby markets; large, few seeds, very sweet.
- Parsons Beauty or Gibson**—Begins to ripen at midseason and continues until Gandy comes in. Dark red, thick, blunt, mild.

### LATE STRAWBERRIES

- Aroma**—Late. Strong, sturdy plants; abundant crops nearly always, even if weather and soil are unfavorable.
- Chesapeake**—Late. Fruit uniformly large, firm, and without green tips; does best in rich, damp land.
- Gandy**—One of the latest Strawberries. Brings the very highest prices, and yields tremendous crops of quality that leaves nothing to be desired in flavor, texture, color and keeping qualities. Bright red, smooth surface. Foliage broad and dark green. Borne on long, upright stems, well above the leaves and dirt.

### EVERBEARING STRAWBERRIES

	25	100	500	1000
Progressive (perfect bloom).....	\$ .50	\$1.30	\$5.00	\$8.00
Mastodon .....	1.00	3.00	10.00	.....

### EVERBEARING STRAWBERRIES

- Progressive**—Pre-eminently a home garden berry; fruit may be shipped short distances if properly packed. Method of raising is same as for the other sorts, excepting for the first season all blossoms that come before the first or middle of July should be cut off.
- Mastodon**—Large berries, productive everbearing. New variety worthy of trial.

---

*Strawberries are a Profitable Crop*

**OUR LIBERAL GUARANTEE.**

All nursery stock is guaranteed to reach the customer in good condition. Accept shipment on arrival, examine and count stock and notify us at once should there be any error and same will be promptly corrected. Also notify the transportation company should stock appear to have been damaged in transit. We do not guarantee continued growth. A tree, shrub or plant is a living organism—it breathes, drinks and feeds and is liable to attacks of disease and insects after being transplanted to the customer's grounds. Our selling prices are very low and we cannot guarantee growth or be responsible for the nursery stock after delivery to our customers in good condition.—**HARRISONS' NURSERIES.**

**NON-WARRANTY.**—In the event that any nursery stock sold by us should prove untrue to name under which it is sold, we hereby agree, on proper proof of such untruthfulness to name, to replace the original order or to refund the purchase price. Except for such liability, and in respect to all nursery stock sold by us, we give no warranty, expressed or implied, as to description, quality, productiveness or any other matter.—**HARRISONS' NURSERIES.**

**TERMS F. O. B.  
BERLIN, MARYLAND  
WORCESTER COUNTY**

**We allow 5% discount for cash with order or prior to date of shipment. Otherwise terms net.**

*Order Now—We Will Ship When  
You Desire*

PLEASE WRITE PLAINLY

# HARRISONS' NURSERIES

J. G. HARRISON & SONS, Proprietors

BERLIN, MARYLAND.

Date \_\_\_\_\_ Send me by \_\_\_\_\_ On or about \_\_\_\_\_ (Date of Shipment)  
Write here "Freight," "Express," or "Use your discretion"

~~This~~ This space for full shipping directions, without reference to post-office address of purchaser.

~~This~~ This space for name and post-office address of purchaser without reference to destination of shipment. Ladies please give title, Miss or Mrs.

Name \_\_\_\_\_

Name \_\_\_\_\_

Place \_\_\_\_\_

Street and No. }  
P. O. Box or }









FIRST CLASS  
PERMIT No. 2  
(Sec. 384½ PL&R)  
BERLIN, MD.

**BUSINESS REPLY CARD**


NO POSTAGE STAMP NECESSARY IF MAILED BEFORE MAY 1, 1929

2c Postage will be paid by 2c

**HARRISONS' NURSERIES**

Worcester County

BERLIN, MARYLAND



*Of interest to You* Send us the names of three or more individuals who might be interested in planting their Home Grounds or Orchards and Gardens, and we will send you **FREE** any one or all of the beautiful and valuable pamphlets listed below.

HARRISONS' NURSERIES  
BERLIN, - - - MARYLAND

- Home Grounds, Their Planting and Planning*
- Colored Fruit List, Garden Collection*
- Bulb and Hyacinth List and How to Plant Them (in Colors)*
- Popular Perennials for All Summer Bloom (in Colors)*

Please send me the pamphlets checked and for this courtesy I send the following names.

Very truly yours,

Name

.....

P. O.

State

.....

---

---

PLEASE LIST THE NAMES AND ADDRESSES  
CAREFULLY IN THESE SPACES

Name

.....

P. O.

State

.....

Name

.....

P. O.

State

.....

Name

.....

P. O.

State

.....

Name

.....

P. O.

State

.....

A tall, slender Chinese Arborvitae tree stands as the central focus in a garden. The tree has a dense, columnar growth habit with fine, needle-like foliage. It is surrounded by other greenery, including a large, dark evergreen to the left and a rounded, bushy shrub to the right. The ground is covered in a light-colored gravel path or bed. The overall scene is bright and verdant.

**CHINESE ARBORVITAE**  
(WUPEI ORIENTALIS)

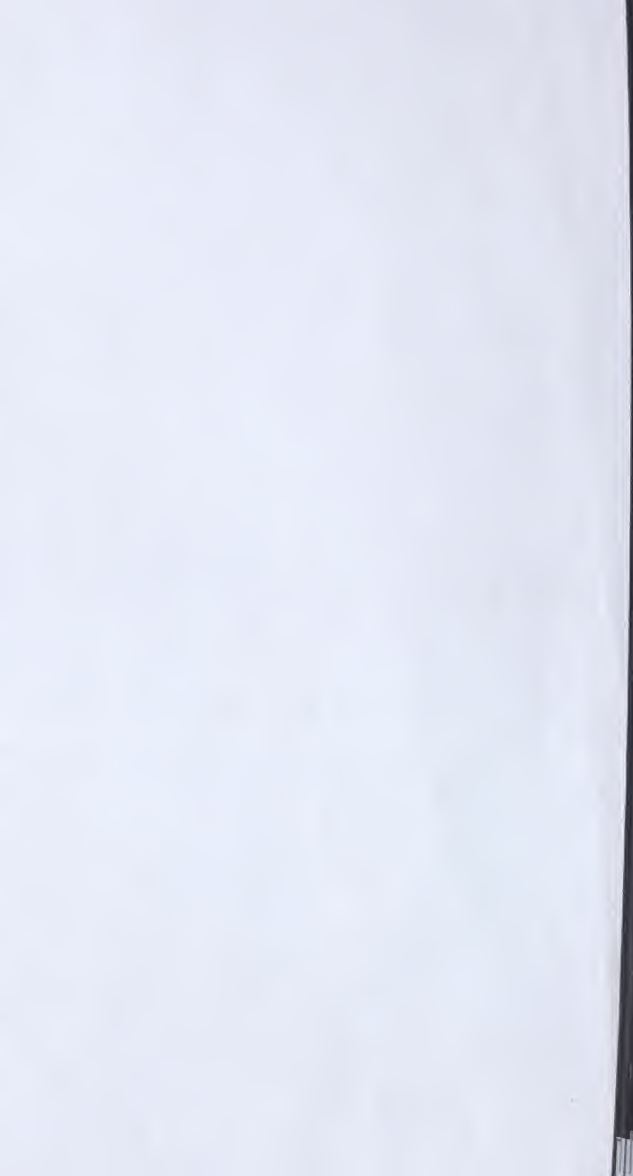


**Harrison's**  
J. G. HARRISON & SONS, Props.  
**NURSERIES**

**BERLIN, MARYLAND**

*NURSERYMEN-ORCHARDISTS*





OREGON  
RULE  
CO.

1

U.S.A.

2

3

4



96  
8/14/13  
27

Harrisons'  
 Harrison's Nurseries (Berlin, Md.); Henry G. Gilbert Nursery and S  
 CAT31117675  
 U.S. Department of Agriculture, National Agricultural Library  
**[25] harrisonsnurseri1928harr\_1**  
 Aug 13, 2013

OREGON RULE CO.

1

U.S.A.

2

3

4

5

