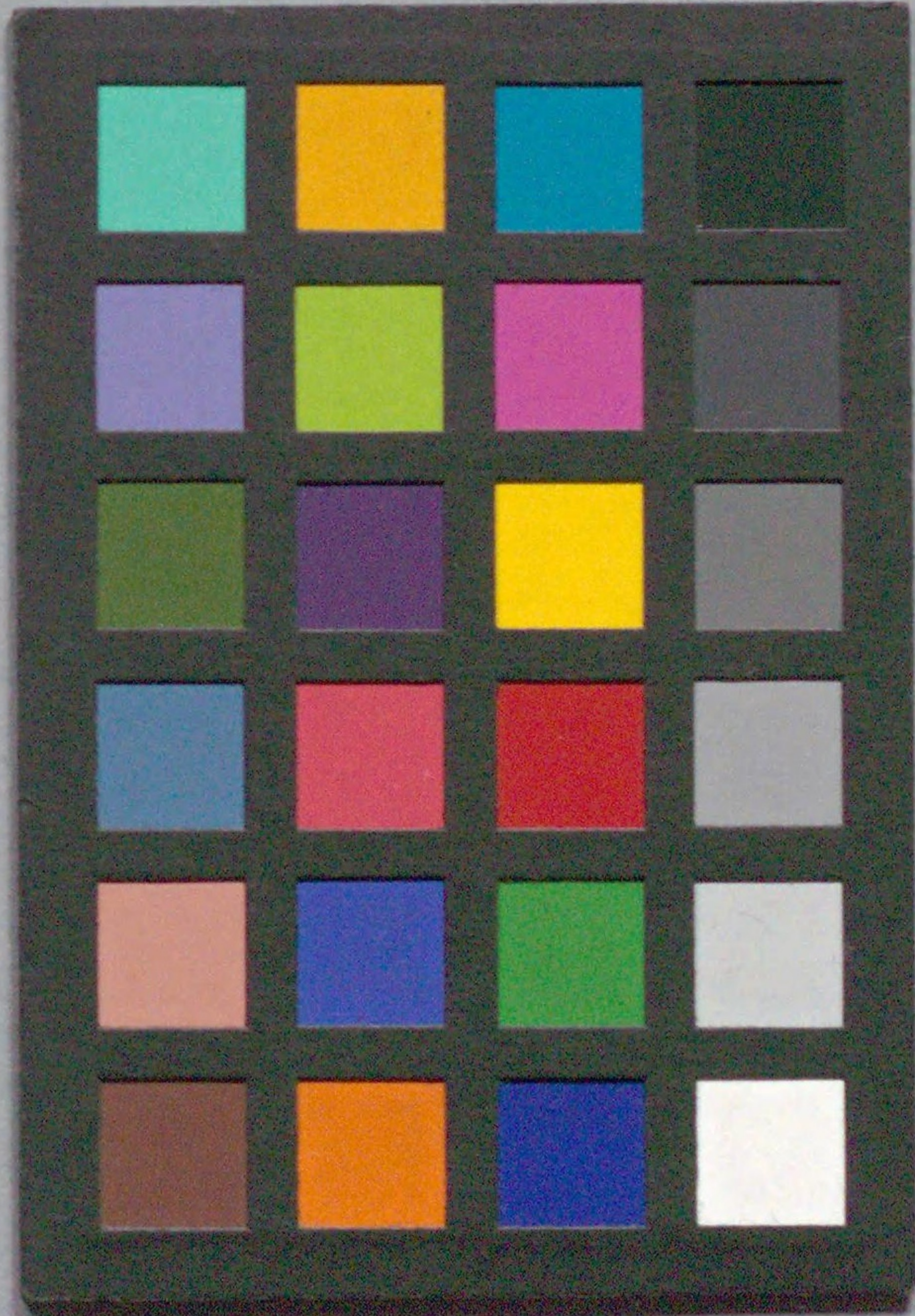




国立国会図書館 鶯娘梅相宿 3巻 208-248



ガラス使用

鶯娘梅相宿の合巻納

東西展覧
三冊

文化九





鶯娘
梅相宿
傾城梅枝
簾屋源
全三冊

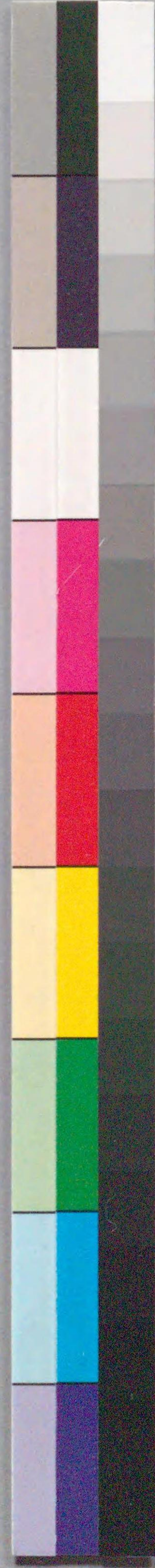
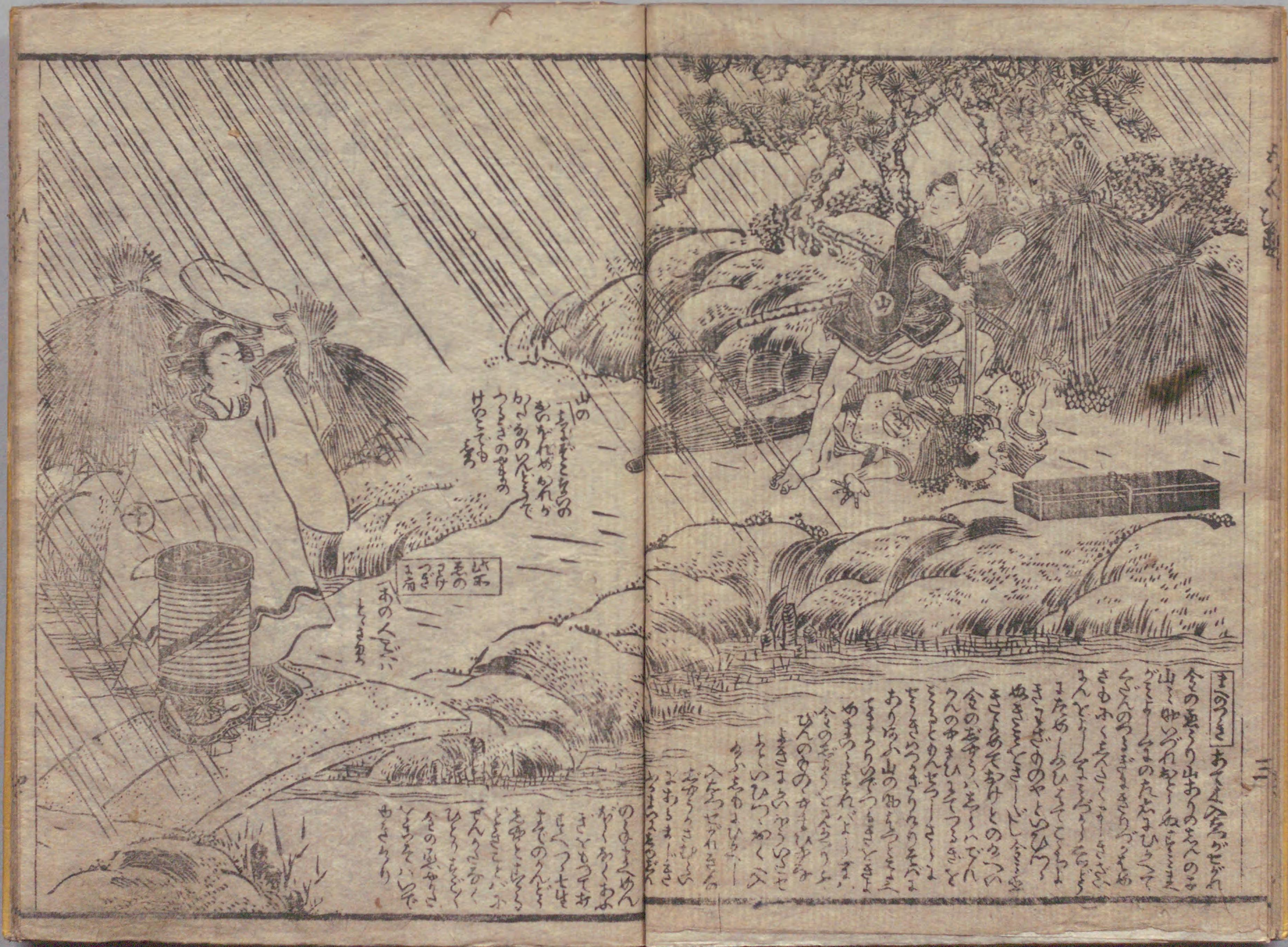


神崎旋君
梅枝大夫
實八利左衛門
千島
鶯娘
梅相宿

鳥







Handwritten text in a cursive style, likely a commentary or a scene description, located at the top of the left page.



Vertical handwritten text located to the left of the woman's illustration.

藤原可山作勝川春扇画
 宜女昔蒲
 藤女真流
 中本三冊
 丸甚板

Handwritten text in a cursive style, located at the bottom of the left page.



Vertical handwritten text located to the left of the scene illustration.

Large block of handwritten text in a cursive style, located at the bottom of the right page.





Handwritten Japanese text in vertical columns, located above and to the right of the illustration. The text is written in a cursive style.



Handwritten Japanese text in vertical columns, located above and to the right of the illustration. The text is written in a cursive style.







Handwritten text in a cursive style, likely a play script, surrounding the illustration. The text is arranged in vertical columns, with some lines written above and below the figures. The characters are dense and difficult to read without specialized knowledge of the script.

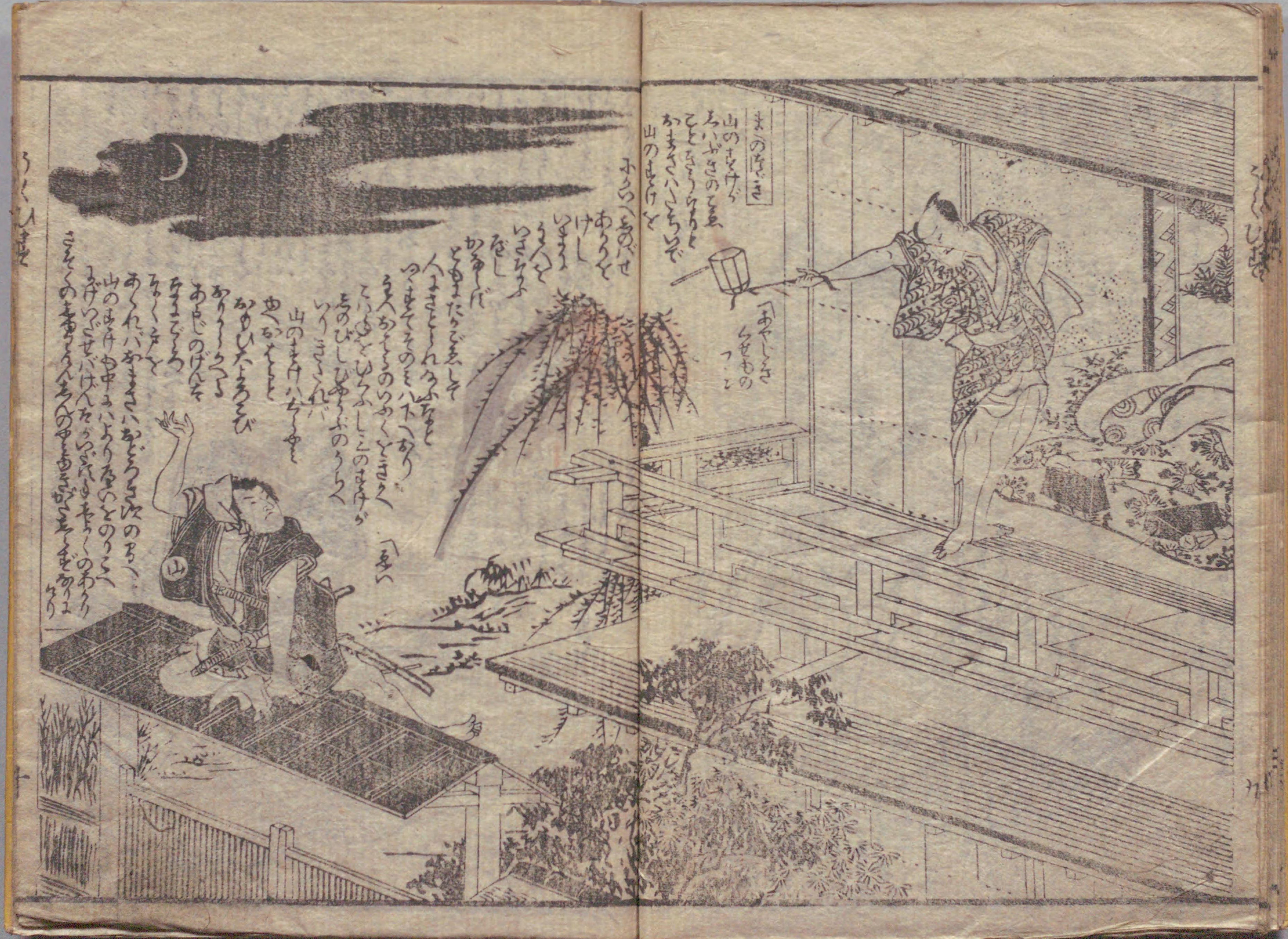


Handwritten text in a cursive style, likely a play script, surrounding the illustration. The text is arranged in vertical columns, with some lines written above and below the figures. The characters are dense and difficult to read without specialized knowledge of the script.



Handwritten text in a cursive style, likely a play script, surrounding the illustration. The text is arranged in vertical columns, with some lines written above and below the figure. The characters are dense and difficult to read without specialized knowledge of the script.





Handwritten text in a cursive script, likely a transcription of a Japanese text, located on the upper left page.

Handwritten text in a cursive script, likely a transcription of a Japanese text, located on the lower left page.

あまの
あまの
あまの



Handwritten text in a cursive script, likely a transcription of a Japanese text, located on the upper right page.

Handwritten text in a cursive script, likely a transcription of a Japanese text, located on the lower right page.

あまの
あまの
あまの







208
248



東西巻南北作

筆耕 綿直可山回

山東京傳店

讀書丸 奇應丸

右に不切ぢりくゝあまこ入るんぢり

同 京山

水晶粉

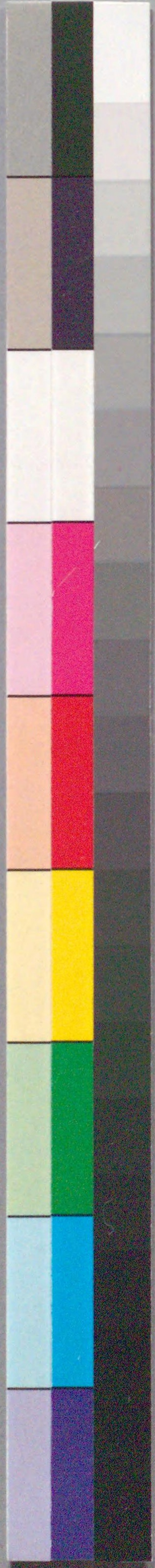
右に不切ぢりくゝあまこ入るんぢり

東西巻南北

正面額影石まう由のおんてん

後放諸儀莫式は捨おはけ

勝川春之扇画



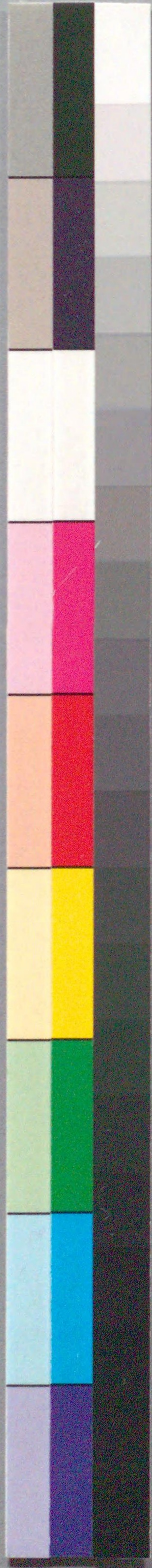
208

 248



国立国会図書館 鶯娘梅相宿 3巻 208-248

ガラス使用



国立国会図書館 鶯娘梅相宿 3巻 208-248

ガラス使用