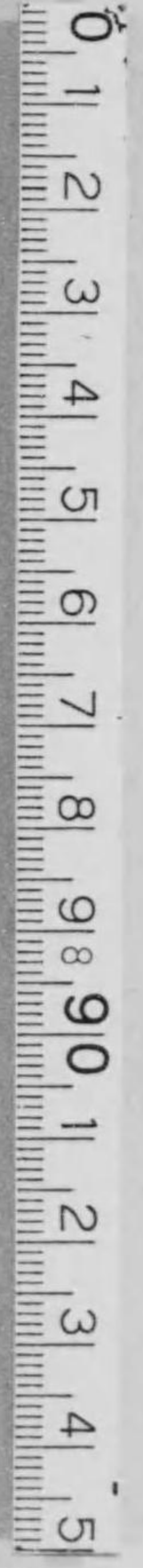


始





408
66



皇天治明

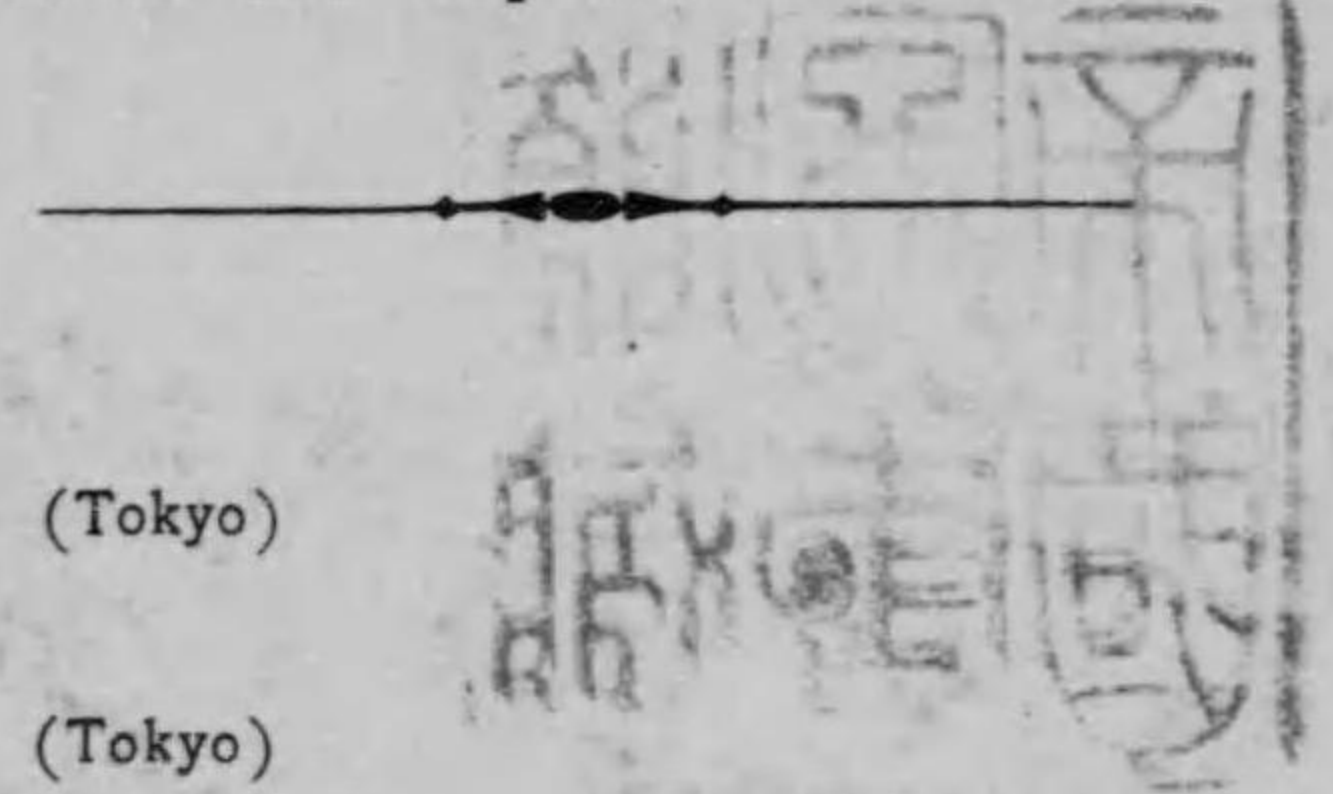
御大葬函簿

御寫真集

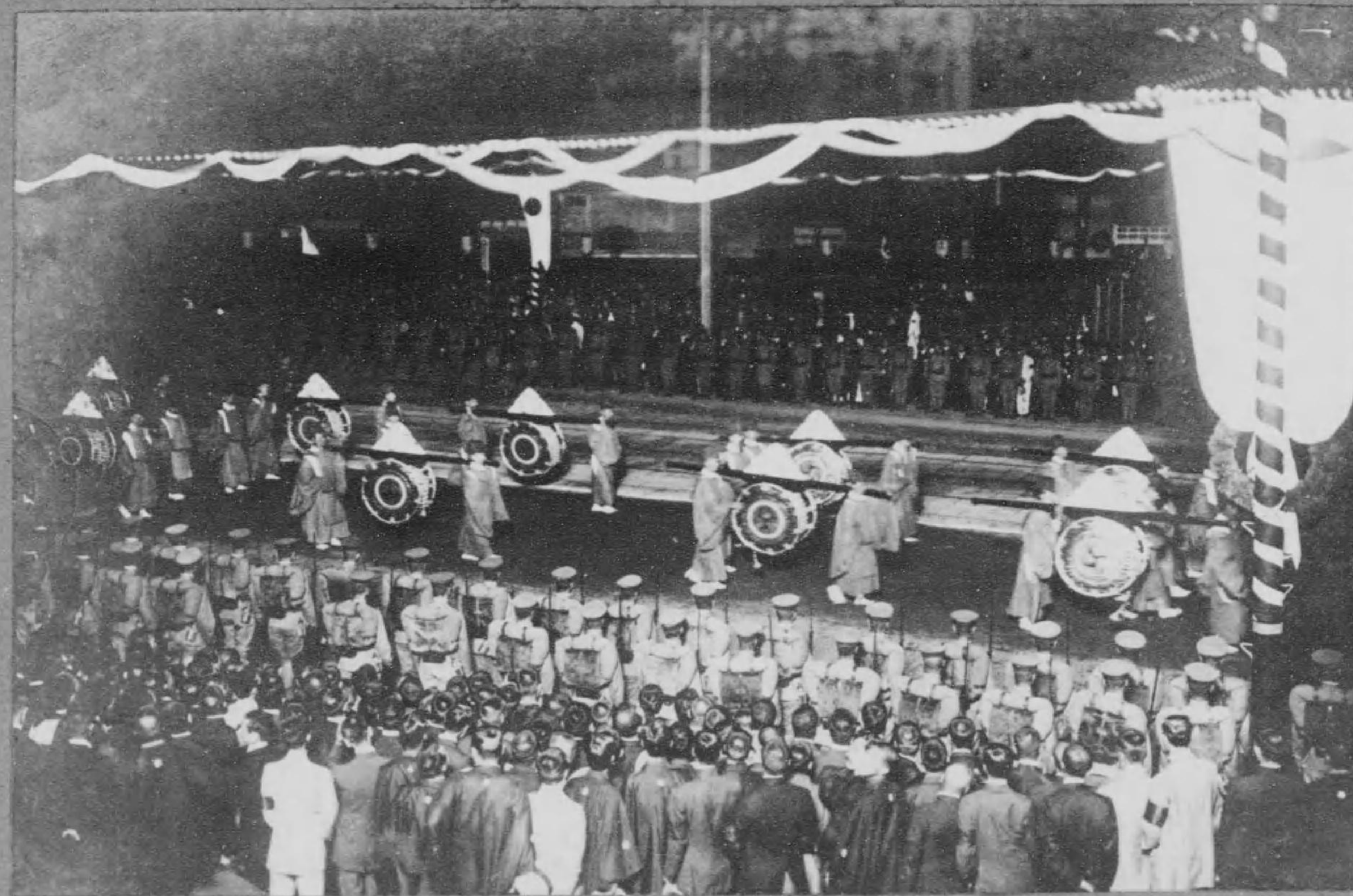
大正
1. 10. 18
購求

408-66

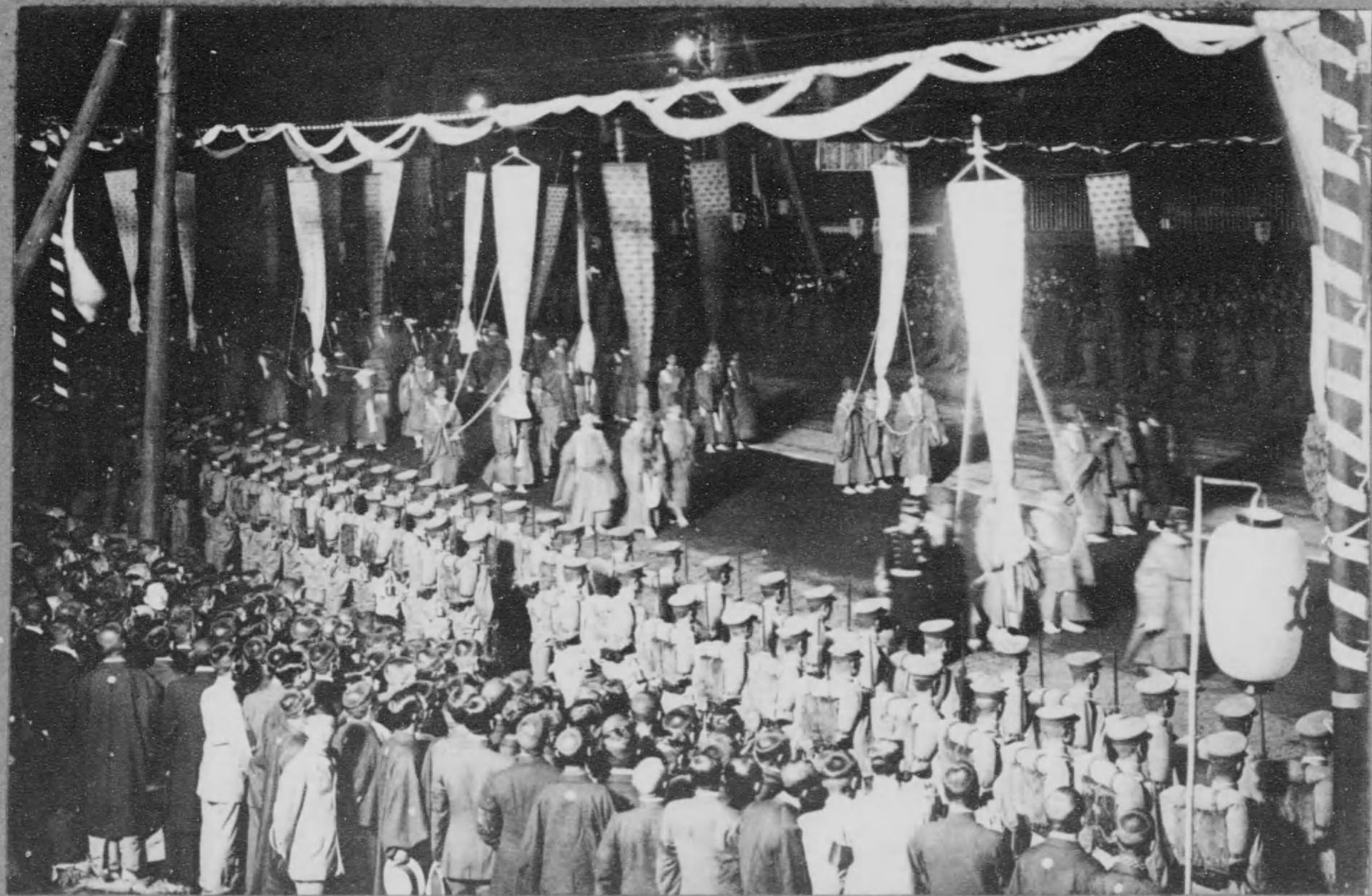
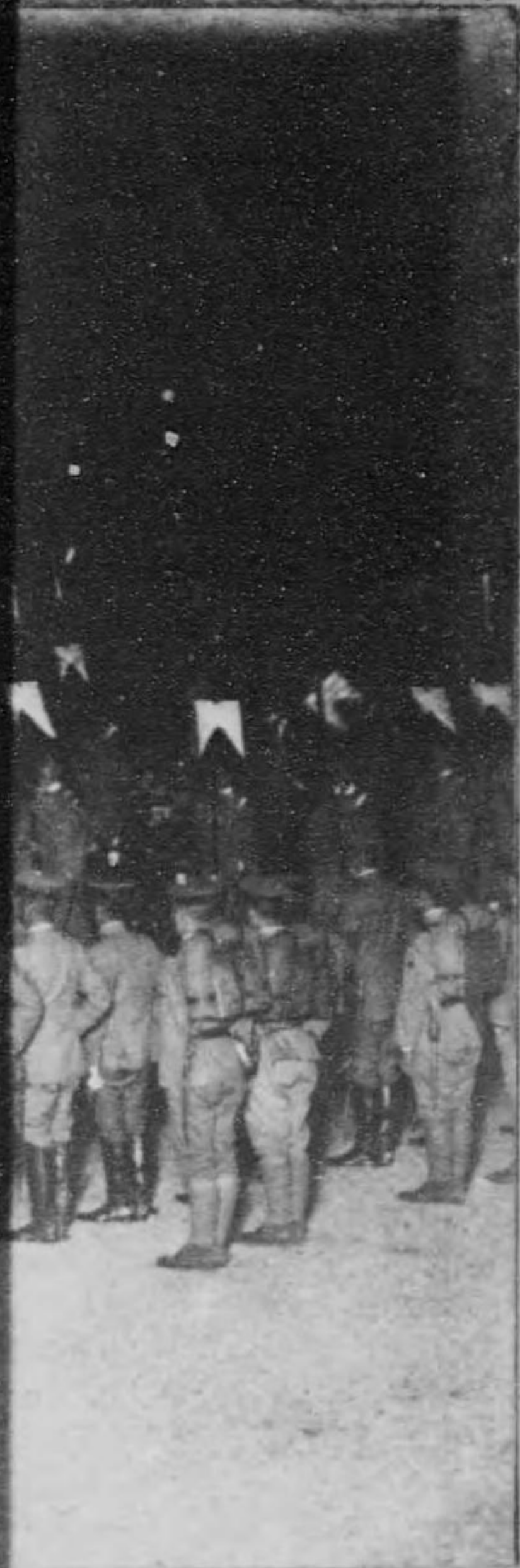
Photographs of the Imperial Funeral Procession.



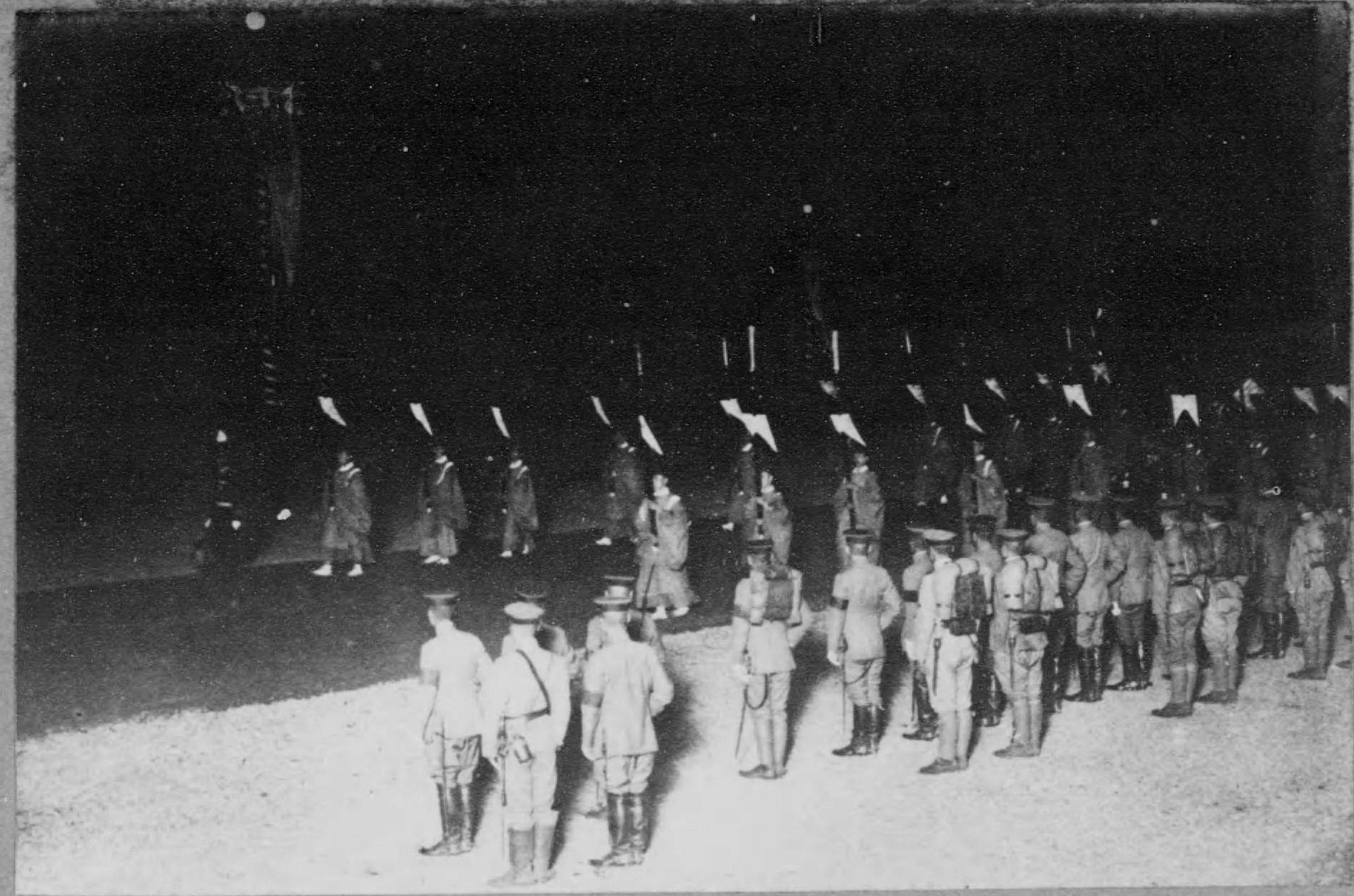
1. Drums. (Tokyo)
2. White and Yellow Banners. (Tokyo)
3. Halberds. (Tokyo)
4. The Imperial Funeral Cart. (Tokyo)
5. Members of the Imperial Diet. (Tokyo)
6. Officers of Army and Navy, and Civil Officials. (Tokyo)
7. Guard of Honour from the British Warships. (Tokyo)
8. The Funeral Pavilion at Aoyama. (Tokyo)
9. Advance Guard of Police Inspectors and Prince Iwakura. (Momoyama)
10. Bows and Quivers. (Momoyama)
11. Banners of the Sun and Moon. (Momoyama)
12. The Imperial Bier carried by Men of Yase Village. (Momoyama)
13. H. I. H. Prince Kwanin, Representative of His Majesty. (Momoyama)
(Dressed in the Grand Cordon of the Order of Chrysanthemum)
14. H. I. H. Prince Fushimi, President of the Imperial Funeral Commission. (Momoyama)
(In the Japanese Ceremonial Dress of White)
15. Group of Princes of Blood. (Momoyama)
From the right; (1) Prince Higashikuni, (2) Prince Nashimoto, (3) Prince Takeda, (4) Prince Kitashirakawa.
16. Military and Naval Guards. (Momoyama)



(山青) 鉦 鼓

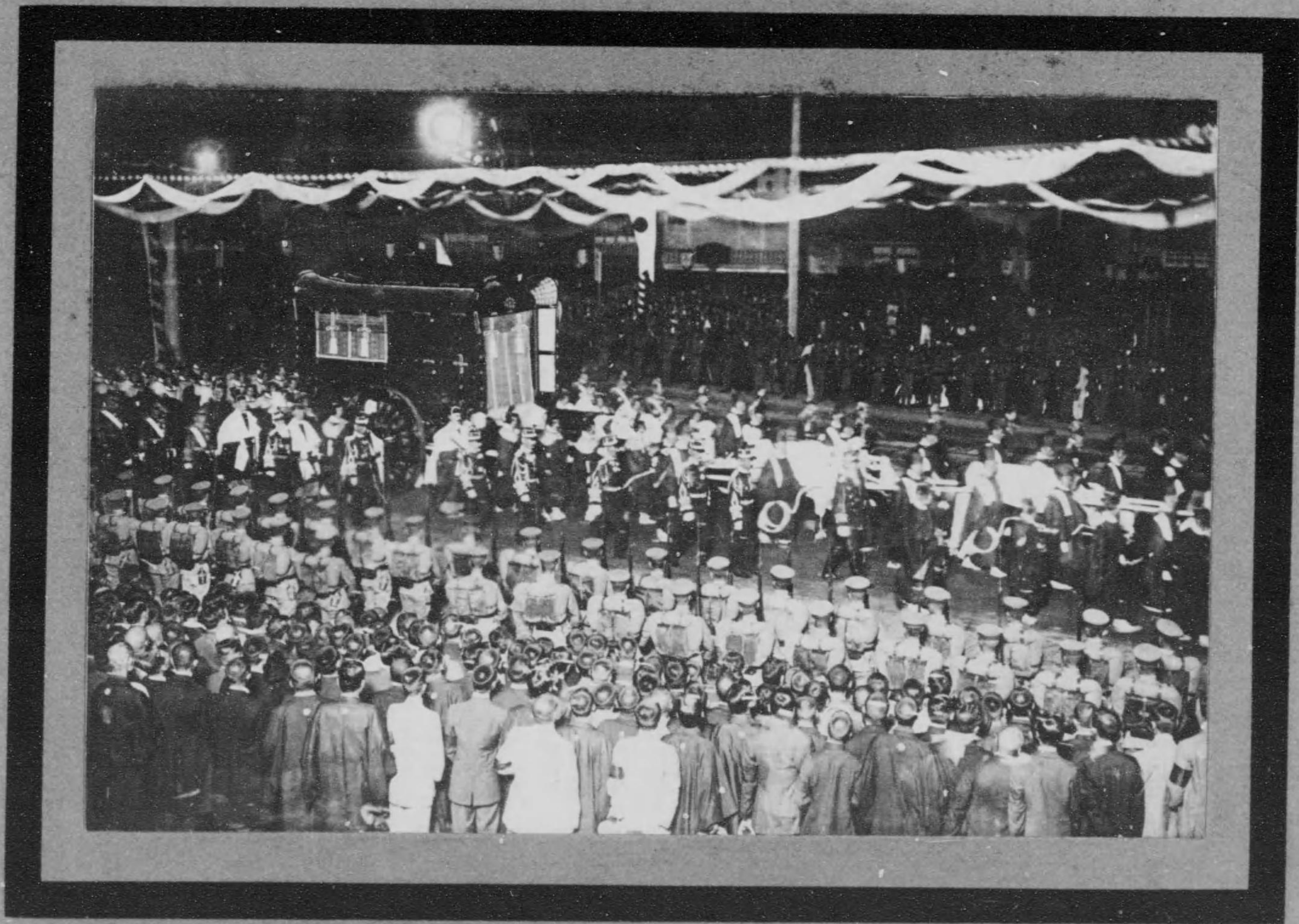


（山西） 樂 隊 行 進



御 鉦 (山齊)



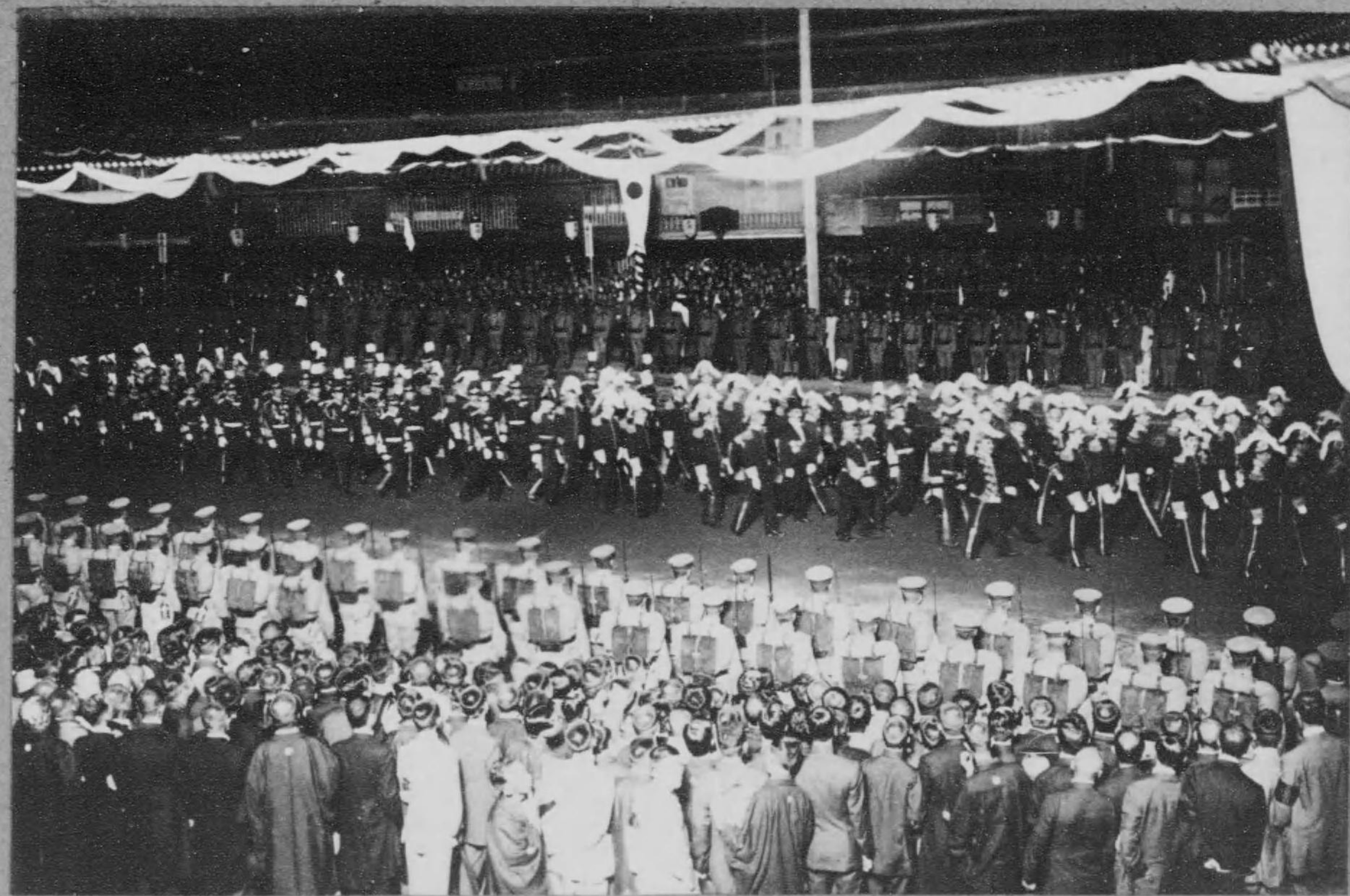


(山青) 輪 靈



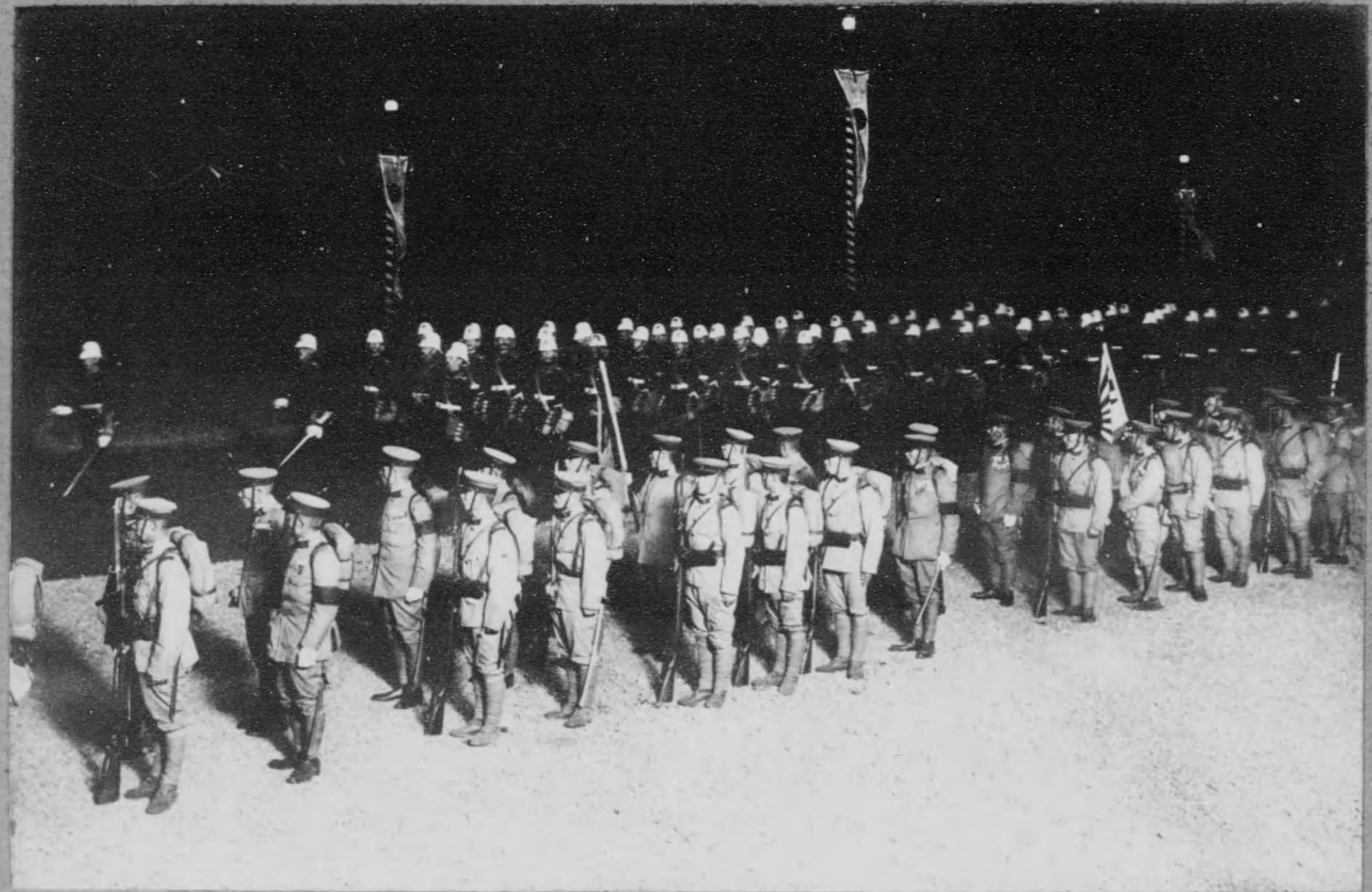
（山東） 貴東兩院議員



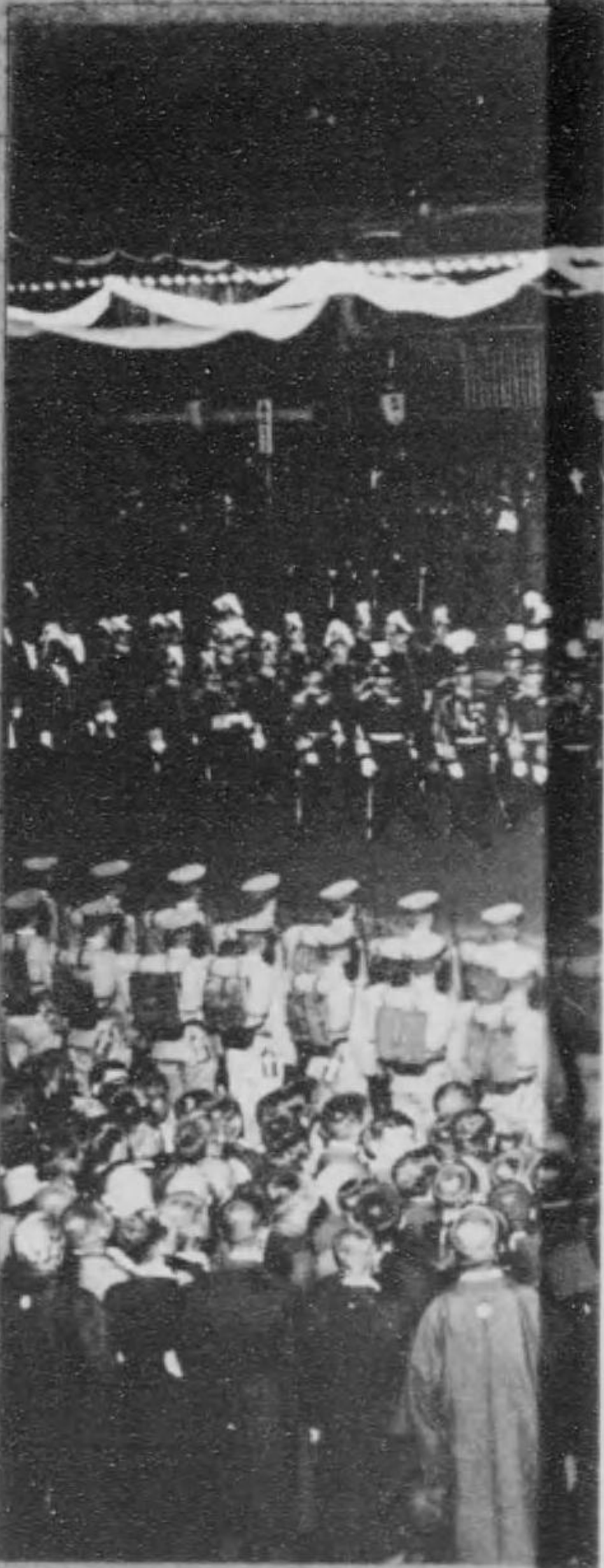


(山西) 校將軍陸及官文





(四貴) 隊仗儀軍海國英

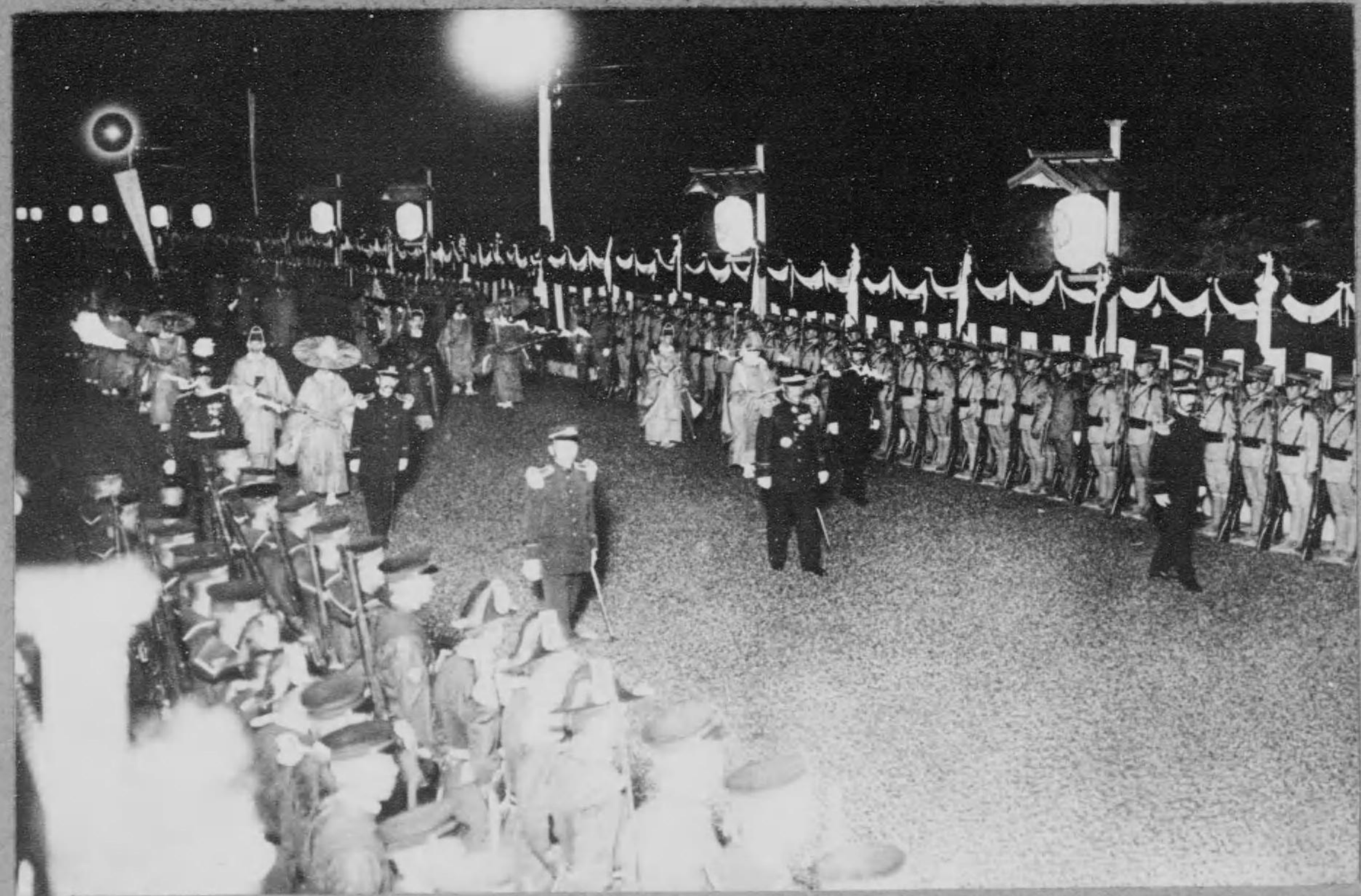




先驅

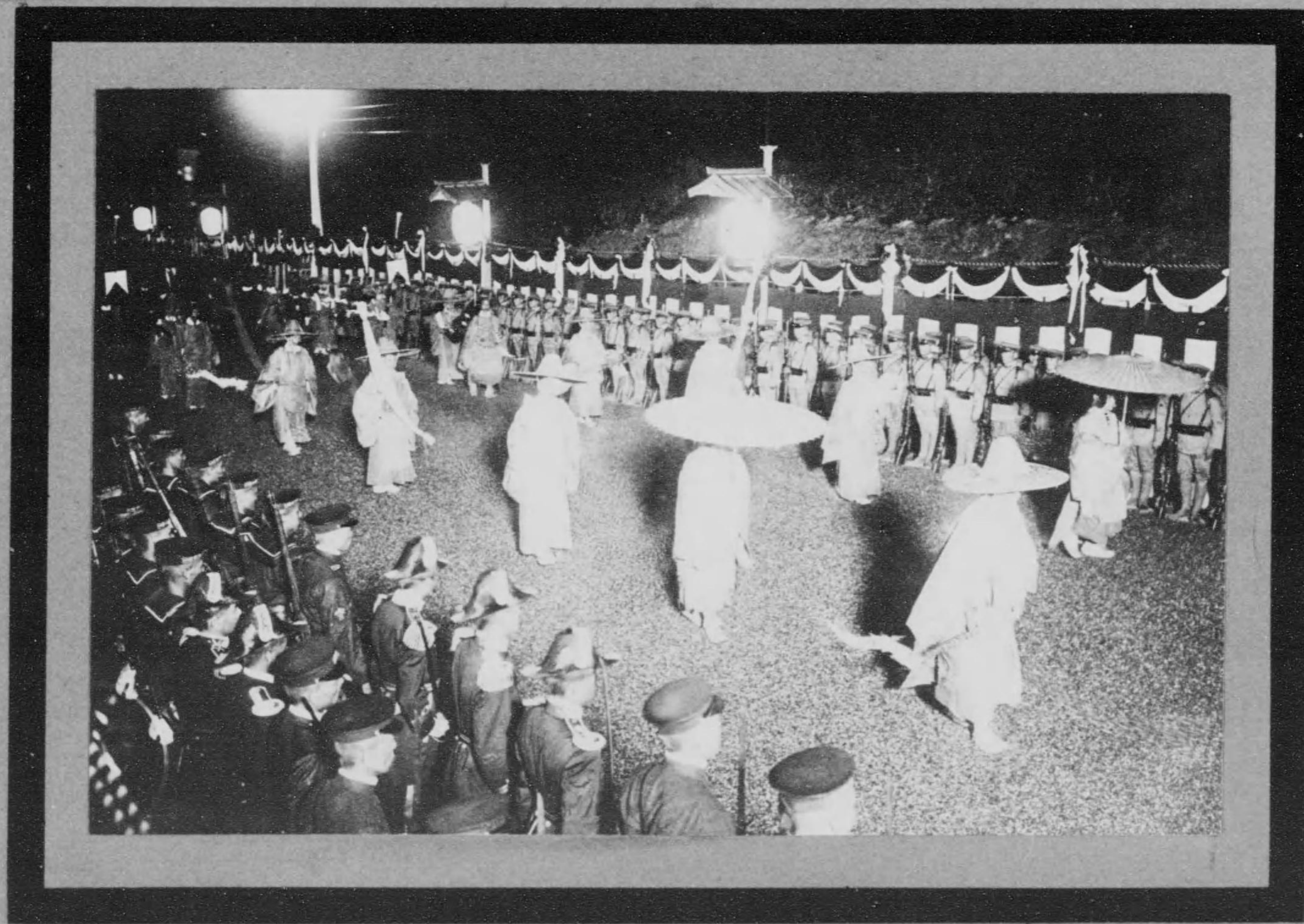
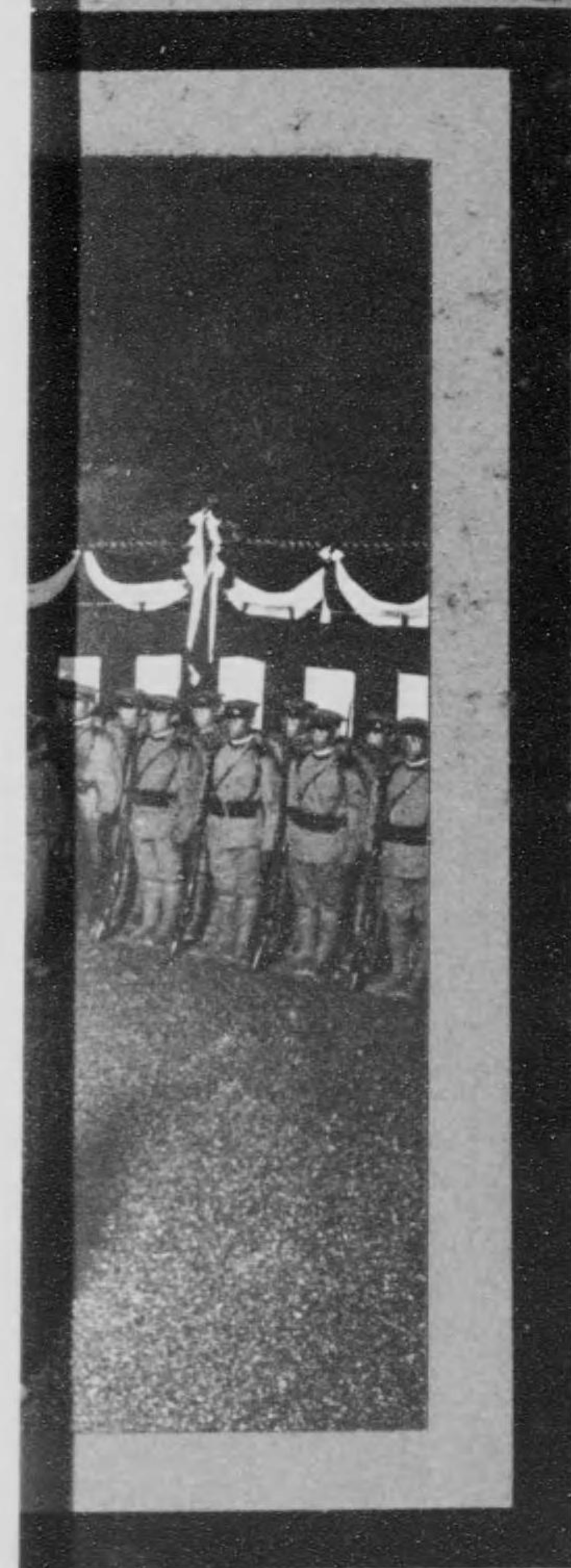


青山御齋場



先驅及大使事務官公爵岩倉與張氏(桃山)





(山純) 梓、楯、弓、篠胡

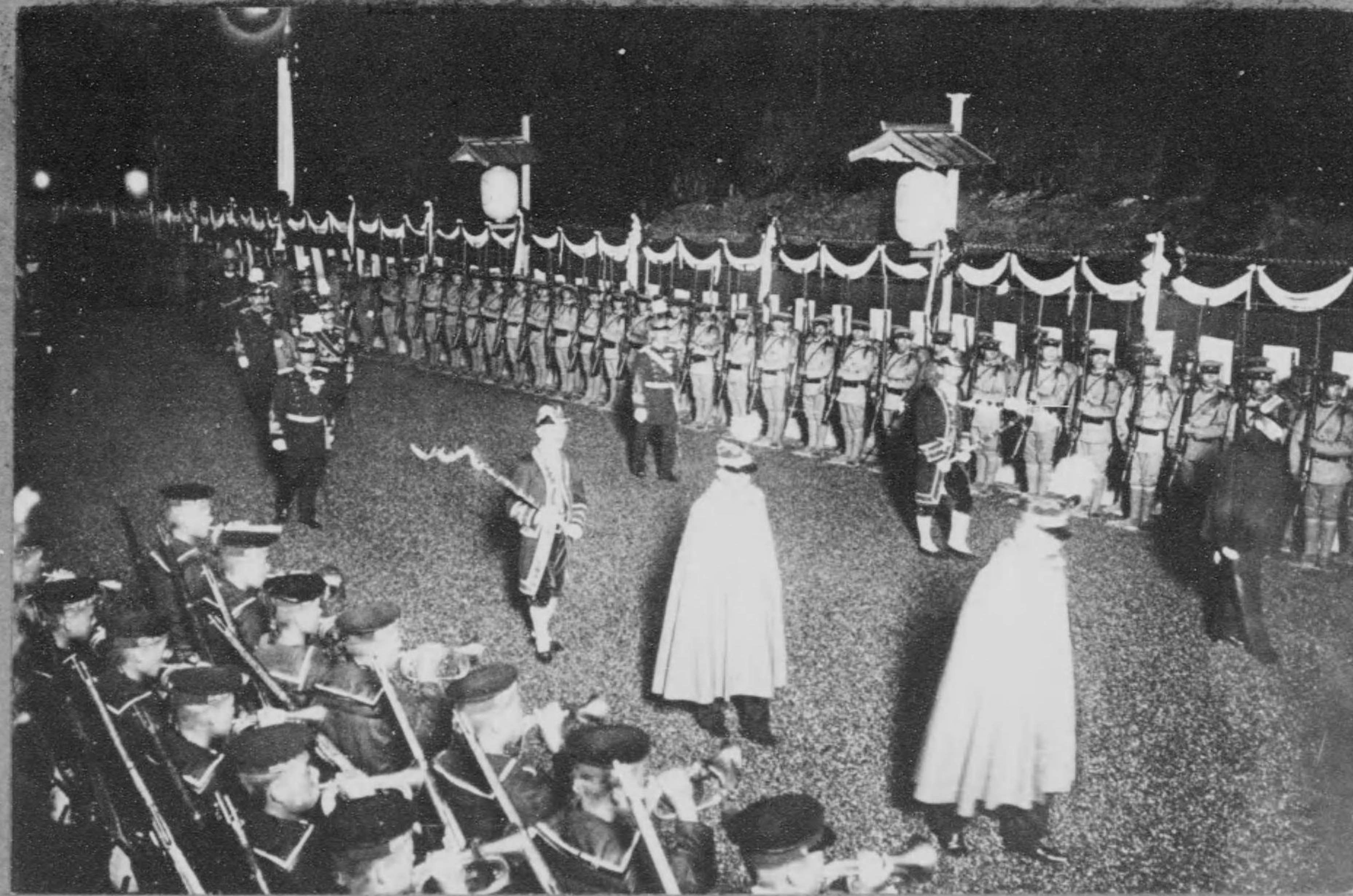


(山桃) 海嶽象月梅嶽象日



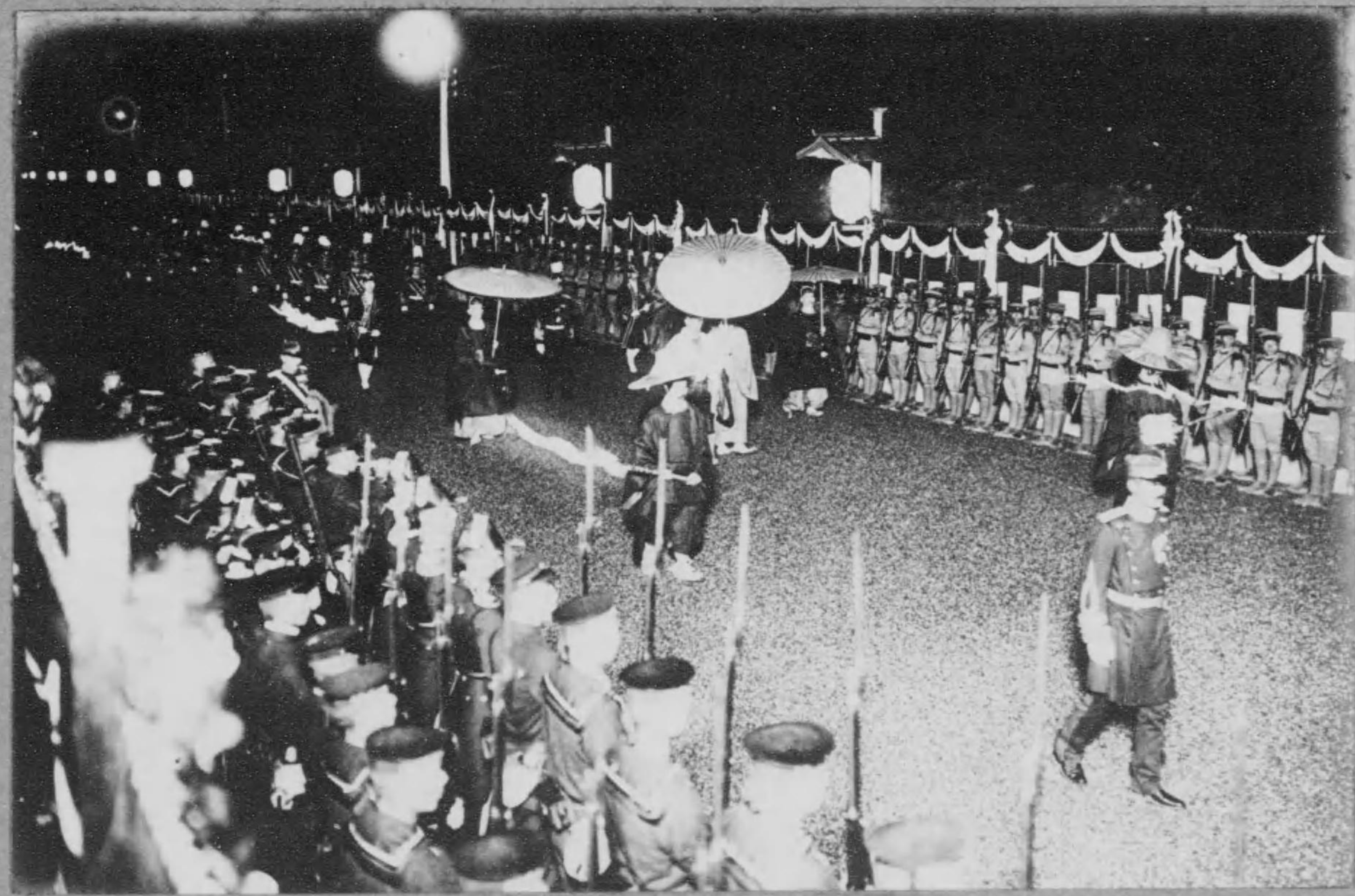


靈輦 (山桃)

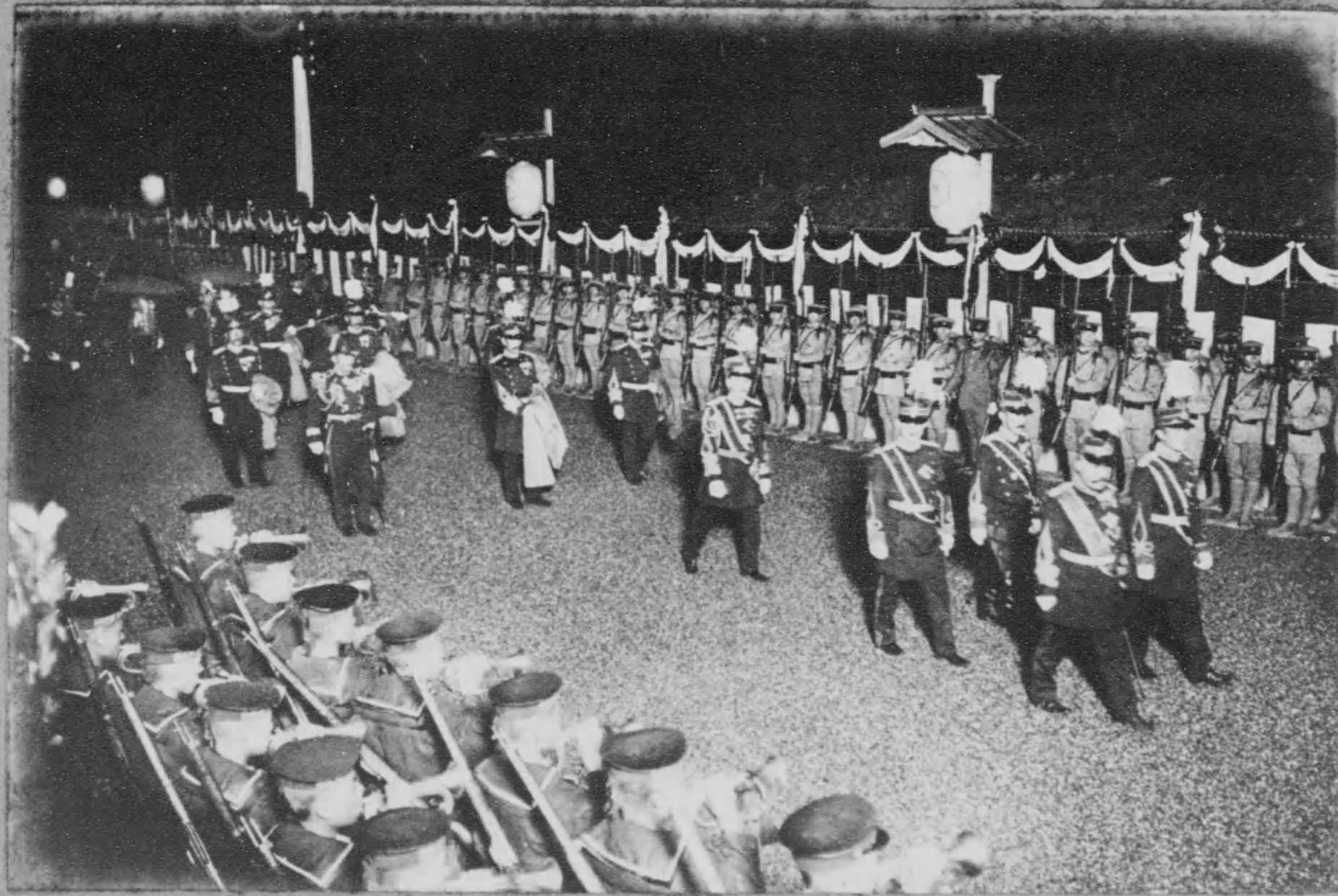


(山桃) 下殿宮代名御院關
(りな下殿がるるらせき進に央中の方後)

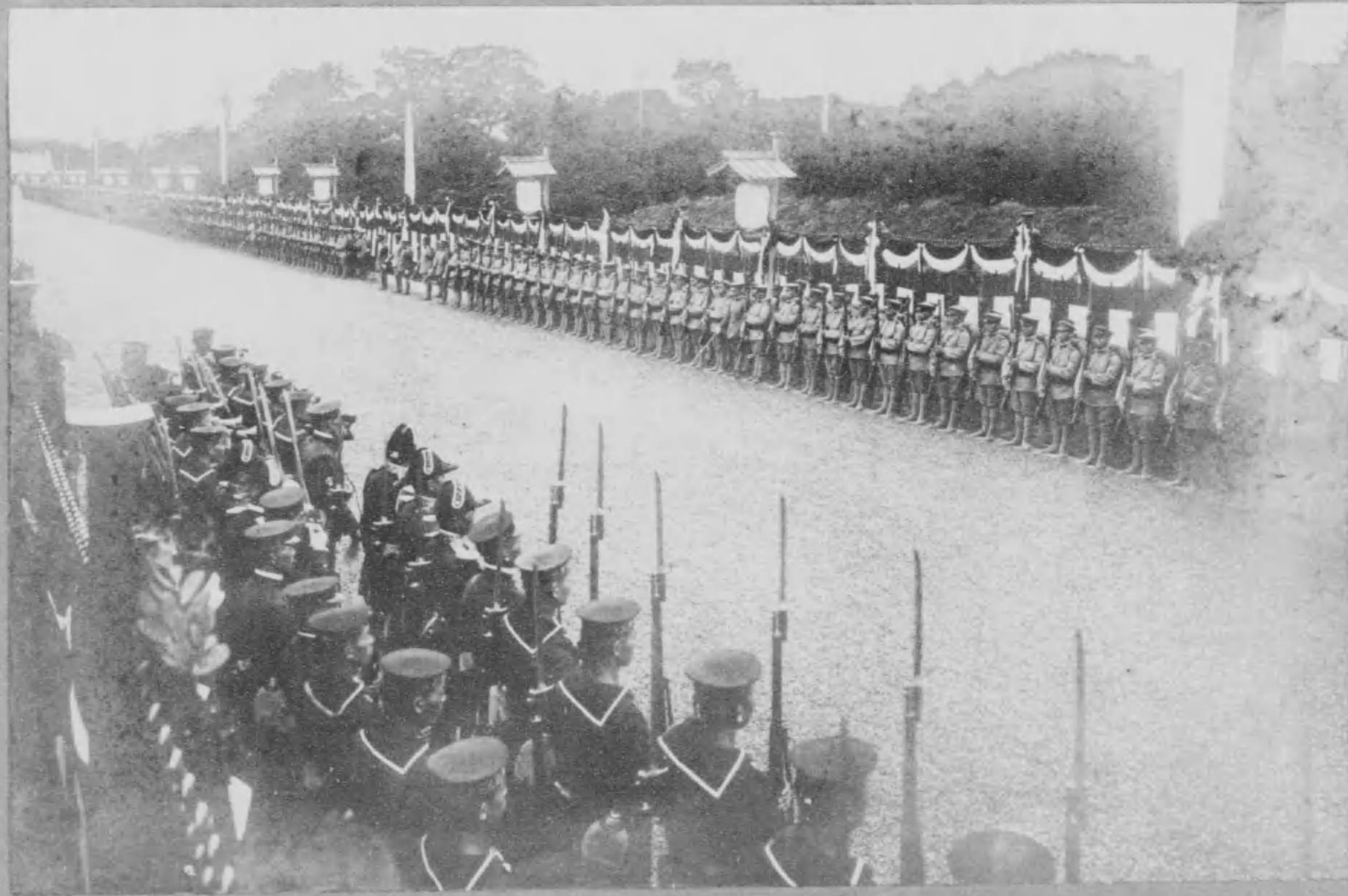




(山桃) 下殿宮裁總使喪大見伏
(り下殿がるせ申け掛しきき傘御に頭先)



(山 桃) 下 殿 族 皇 各
宮 通 久 東 と 宮 本 梨 け 列 一 第 の 頭 光
り な 下 殿 各 の 宮 田 竹 と 宮 川 白 北 け 列 二 第



陸軍儀仗兵 (山桃)

大正九年九月二十五日撮影
大正九年九月二十八日發行

〔實費金四圓八拾錢〕

發行所 市川幸四郎

不詳

二百八十七番屋敷



大正元年九月二十五日謹製
大正元年九月二十八日發行

(實費金四圓八拾錢)

編輯者

市田幸四郎

神戶市元町通三丁目
二百八十七番屋敷

發行所

市田寫真館本店

神戶市元町通三丁目
二百八十七番屋敷

電話一三三三

市田

不許
複製

408
66

終