

MESSRS: SWAN & HUNTER WIGHAM RICHARDSON LTD. SHIP N<sup>OS</sup> 1173-1177-1179-1181.

TO BE CONSTRUCTED TO FOLD LLOYDS REQUIREMENTS.

3-OFF FOR EACH CONTRACT N<sup>OS</sup>

SCALE 1" = ONE FOOT.

BOILERS DESIGNED TO SCANTLINGS OF THE BRITISH MARINE ENGINEERING DESIGN & CONSTRUCTION COMMITTEE.

BOILER MATERIAL FROM SPENCER & O'S NEWBURN.

HEATING SURFACE.

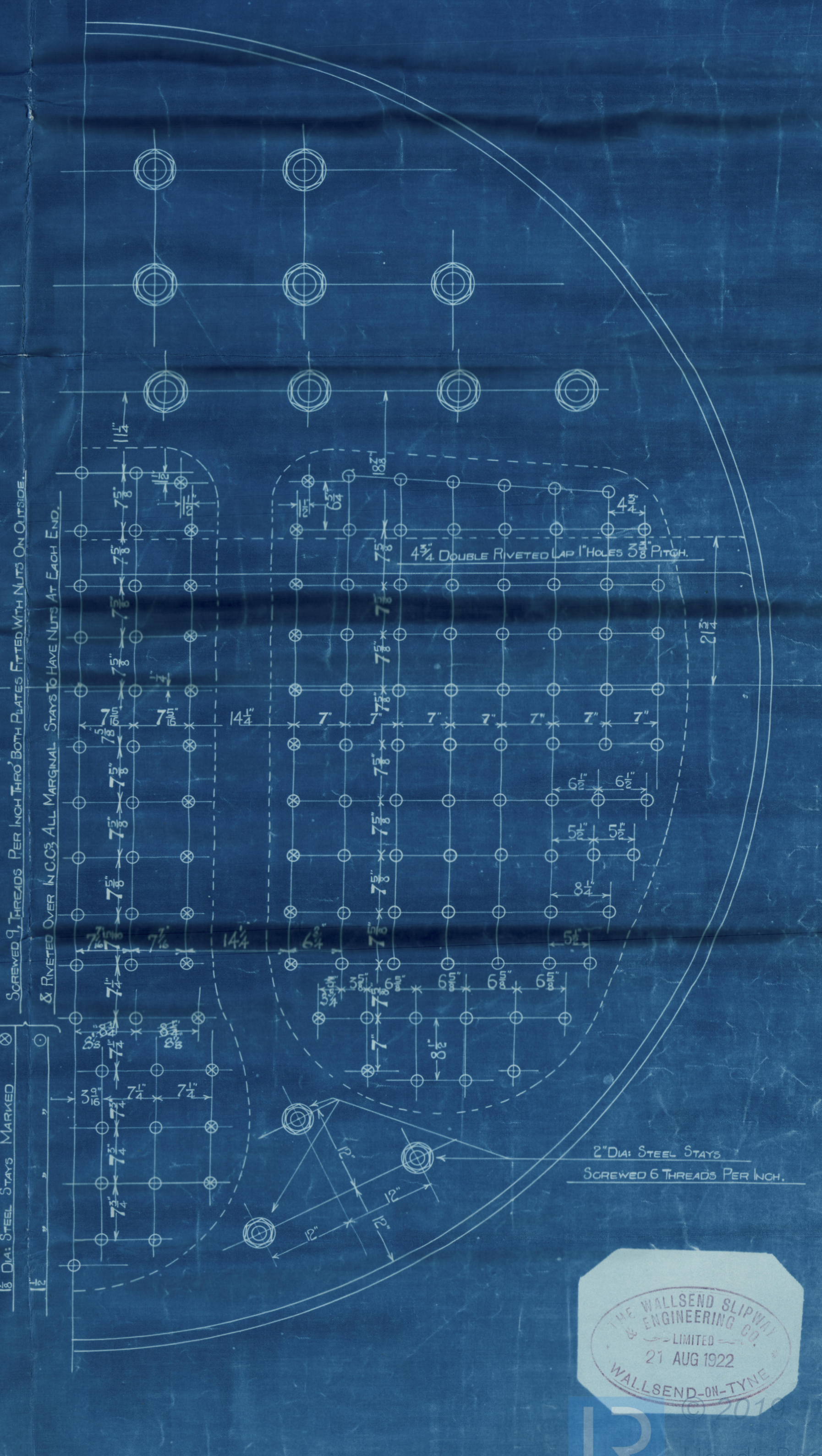
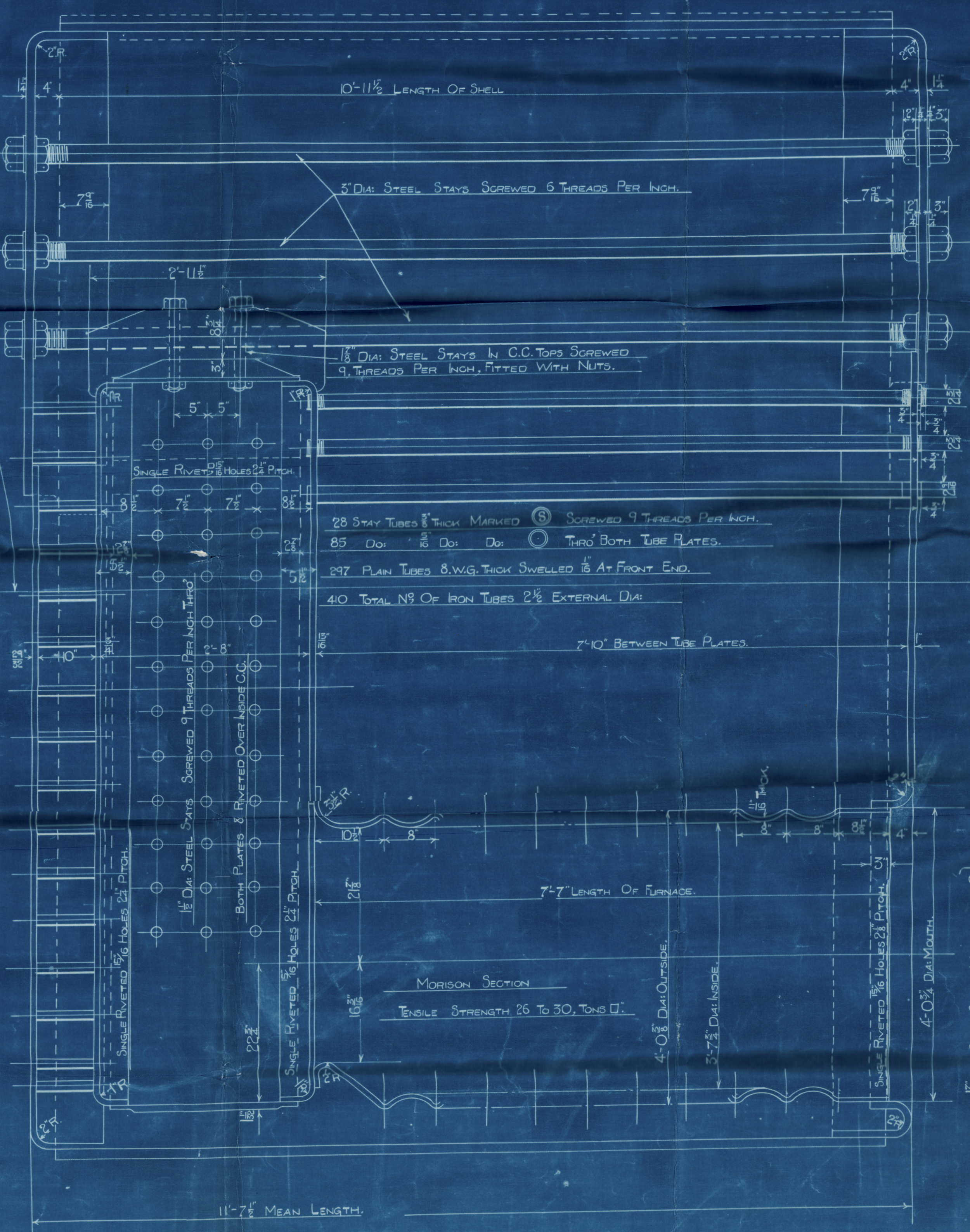
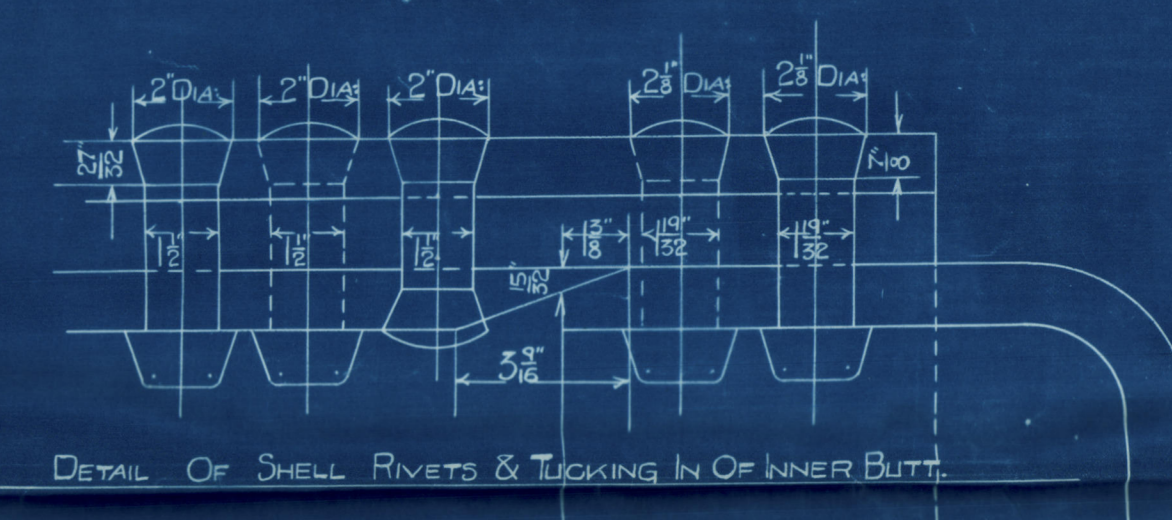
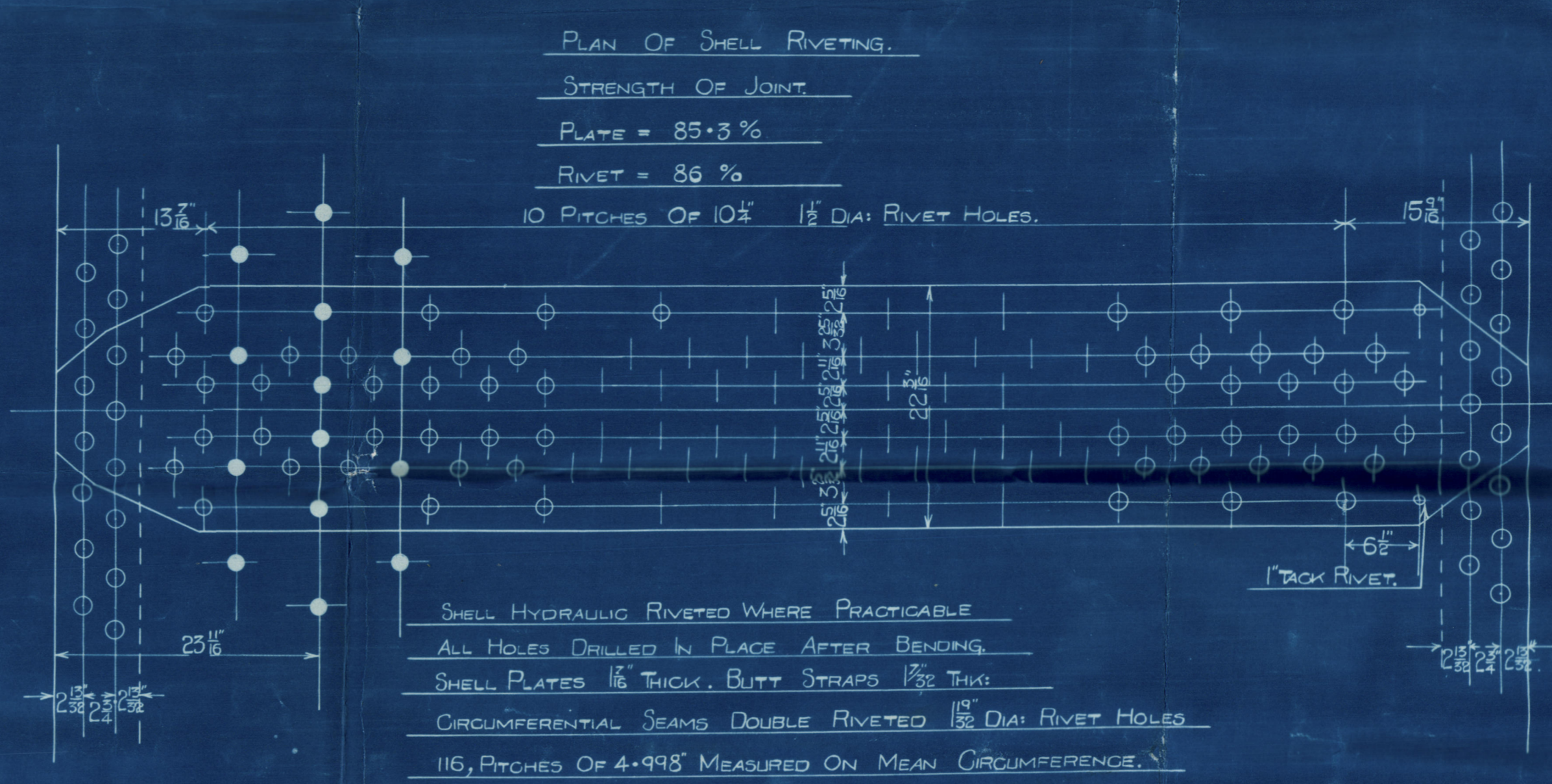
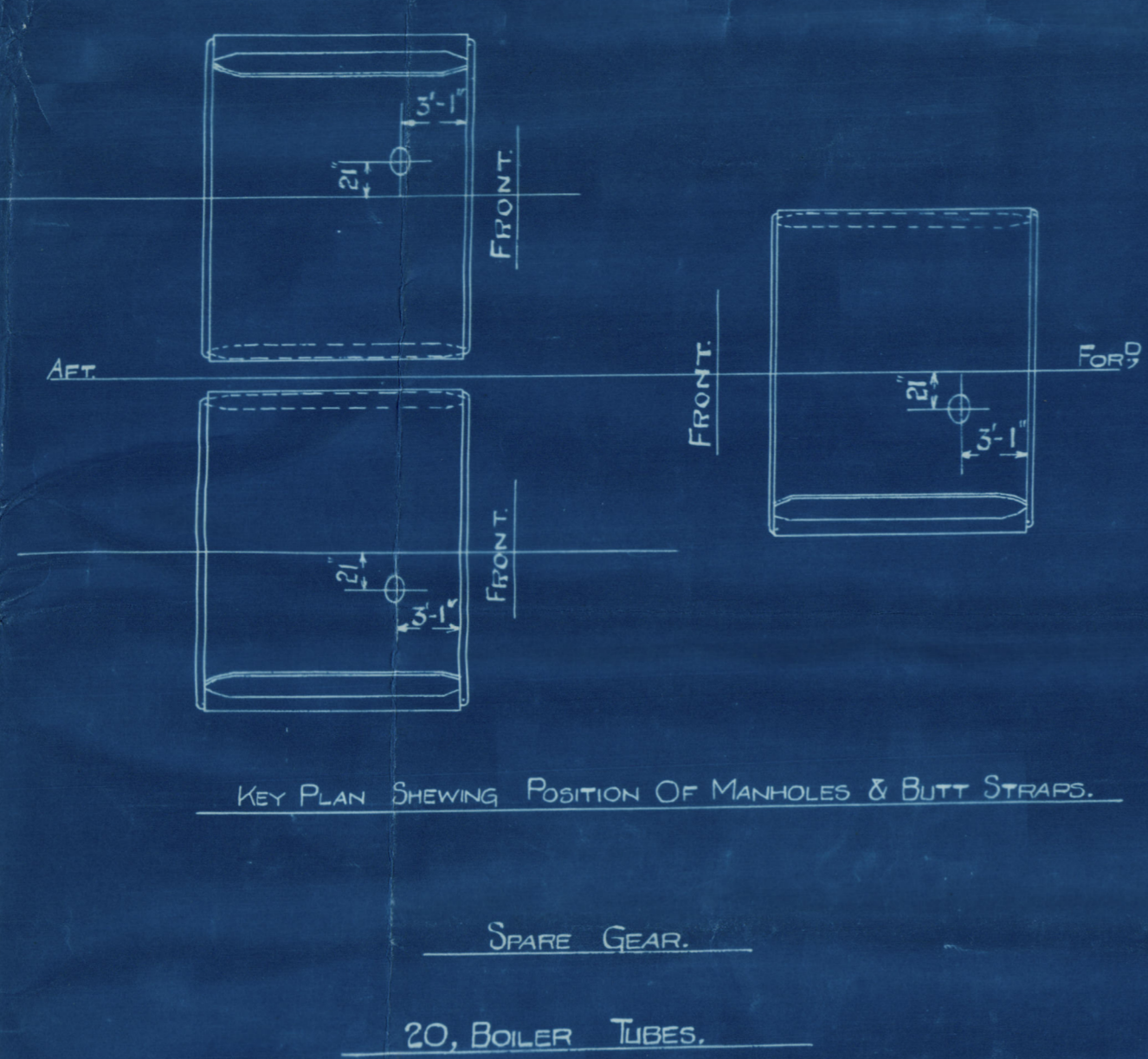
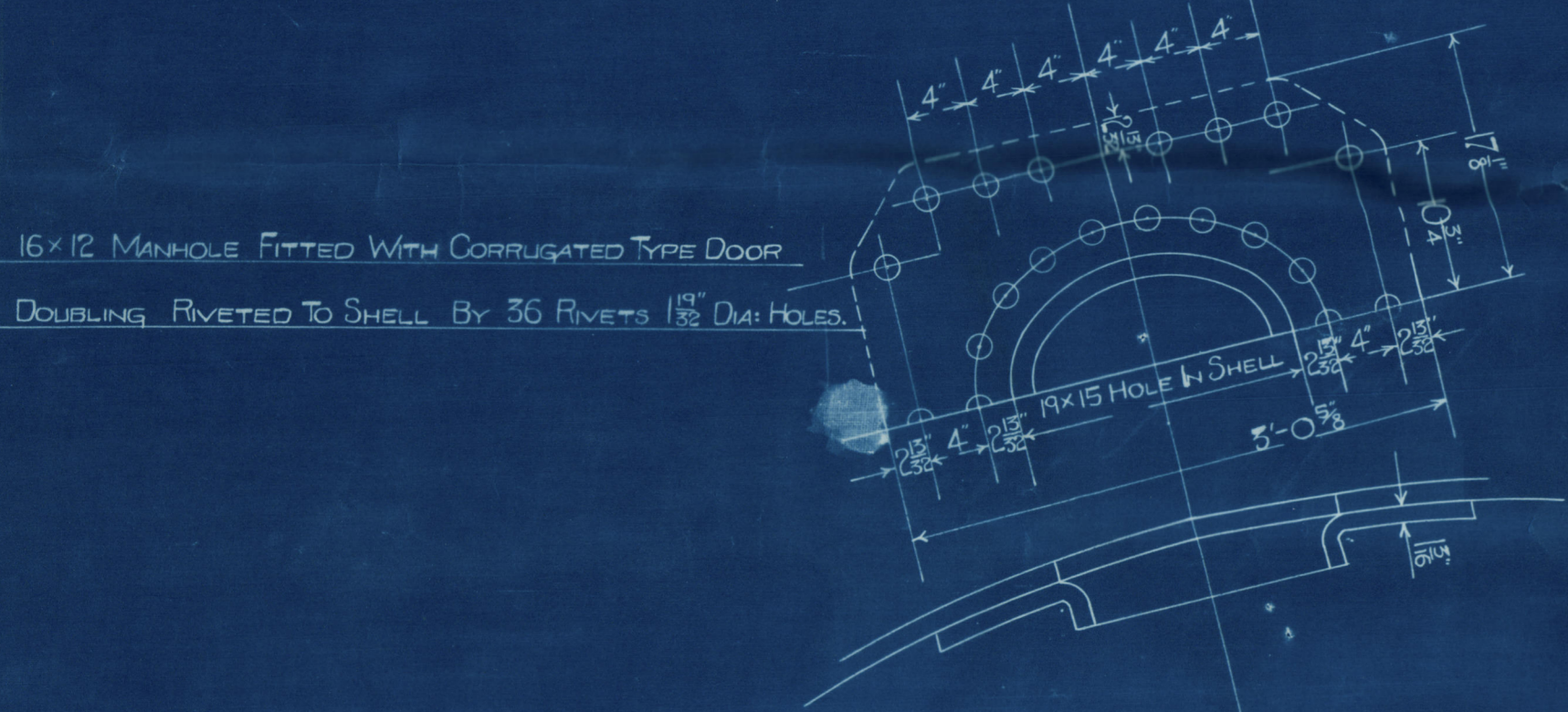
|                     |      |           |
|---------------------|------|-----------|
| TUBES               | 2102 | Sq. FEET. |
| FURNACES            | 167  | Do.       |
| COMBUSTION CHAMBERS | 229  | Do.       |
| FRONT TUBE PLATE    | 47   | Do.       |
| BACK TUBE PLATE     | 41   | Do.       |
| TOTAL ONE BOILER    | 2586 | Do.       |
| TOTAL THREE BOILERS | 7758 | Do.       |

WORKING PRESSURE = 220 LBS. PER SQ. INCH.  
TEST PRESSURE = 380 " " " "

Enclosure to Lloyds Register WSSO-0215 1/2

copy of tank plan handed by the London Office 21/10/23 M 21/22

| DESCRIPTION.                     | MATERIAL. | TENSILE STRENGTH.           |
|----------------------------------|-----------|-----------------------------|
| SHELL PLATES & BUTT STRAPS.      | STEEL     | 30 TO 34 TONS PER SQ. INCH. |
| C.C. GIRDERS & MANHOLE DOUBLING. | "         | 28 TO 32 TONS " " "         |
| WRAPPER & FLANGED PLATES.        | "         | 26 TO 30 " " "              |
| LONGITUDINAL STAYS.              | "         | 28 TO 32 " " "              |
| SCREWED STAYS & RIVET BARS.      | "         | 26 TO 30 " " "              |



The wallend shipway to  
Main Boiler

NS-843-847-848-849

No 849. S.S. "Saxicava"

copy of plan dated 21/10/20

---

of "SAXICAVA"

NEWCASTLE ON TYNE.

Report No. ~~14~~ 6008

---

RETAIN

W550-0215 2/2



© 2019

Lloyd's Register  
Foundation