

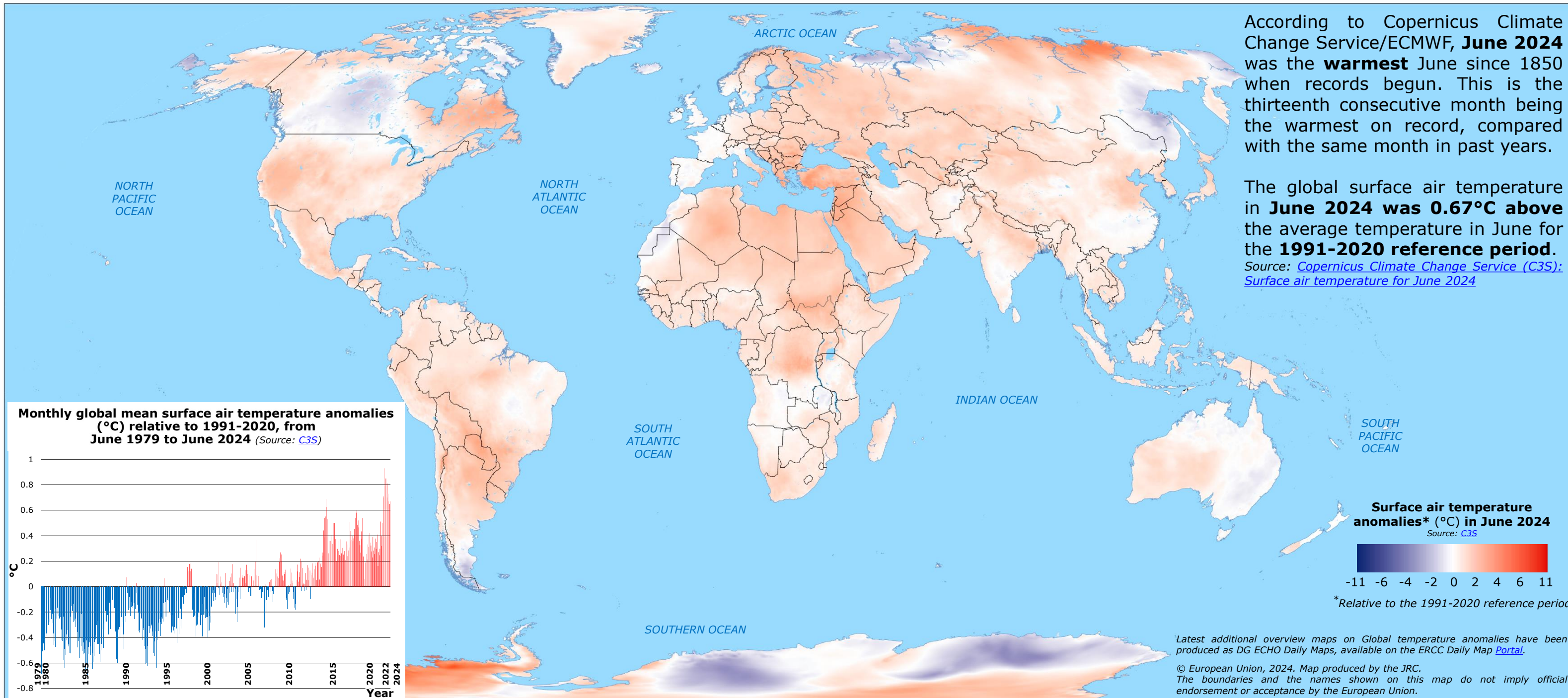
World | Temperature anomalies in June 2024



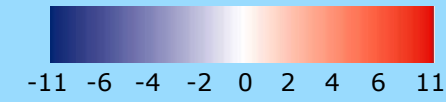
According to Copernicus Climate Change Service/ECMWF, **June 2024** was the **warmest** June since 1850 when records begun. This is the thirteenth consecutive month being the warmest on record, compared with the same month in past years.

The global surface air temperature in **June 2024** was **0.67°C above** the average temperature in June for the **1991-2020 reference period**.

Source: [Copernicus Climate Change Service \(C3S\): Surface air temperature for June 2024](#)



Surface air temperature anomalies* (°C) in June 2024
Source: C3S

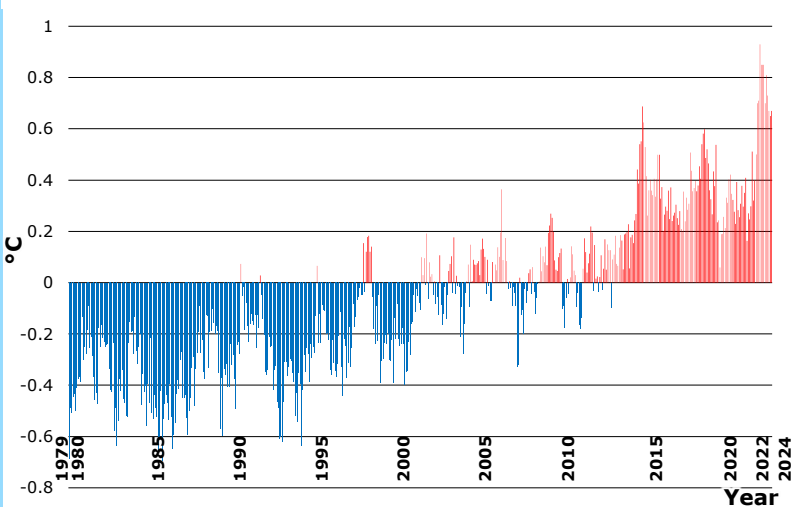


*Relative to the 1991-2020 reference period

Latest additional overview maps on Global temperature anomalies have been produced as DG ECHO Daily Maps, available on the ERCC Daily Map [Portal](#).

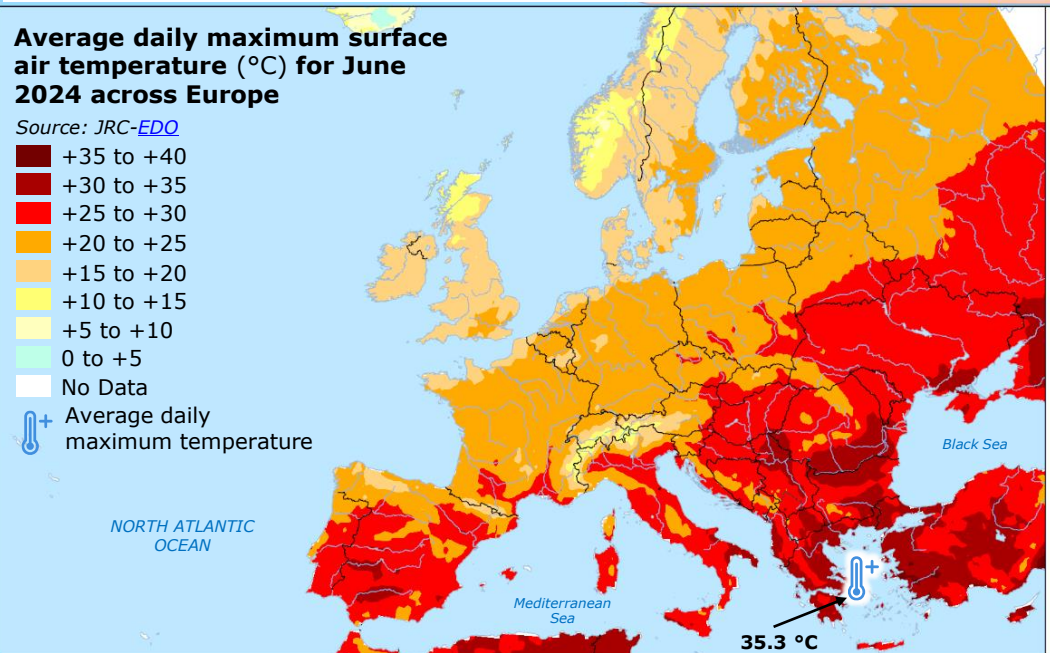
© European Union, 2024. Map produced by the JRC. The boundaries and the names shown on this map do not imply official endorsement or acceptance by the European Union.

Monthly global mean surface air temperature anomalies (°C) relative to 1991-2020, from June 1979 to June 2024 (Source: C3S)



Average daily maximum surface air temperature (°C) for June 2024 across Europe

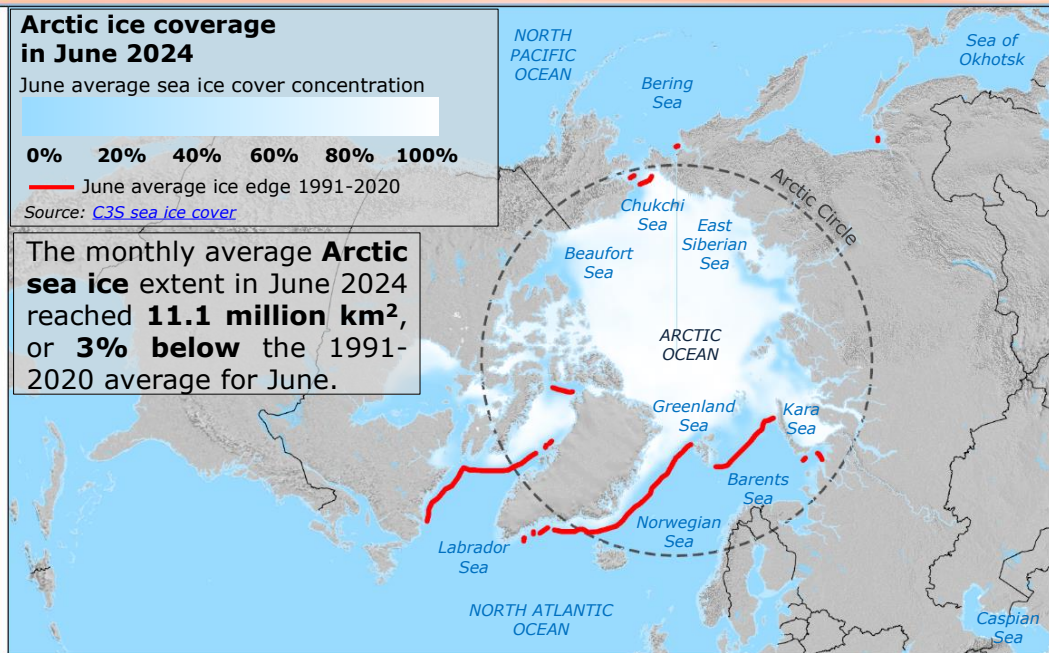
- Source: JRC-EDO
- +35 to +40
 - +30 to +35
 - +25 to +30
 - +20 to +25
 - +15 to +20
 - +10 to +15
 - +5 to +10
 - 0 to +5
 - No Data
 - Average daily maximum temperature



Arctic ice coverage in June 2024

- June average sea ice cover concentration
- 0%
 - 20%
 - 40%
 - 60%
 - 80%
 - 100%
- June average ice edge 1991-2020
- Source: C3S sea ice cover

The monthly average **Arctic sea ice** extent in June 2024 reached **11.1 million km²**, or **3% below** the 1991-2020 average for June.



Antarctic ice coverage in June 2024

- June average sea ice cover concentration
- 0%
 - 20%
 - 40%
 - 60%
 - 80%
 - 100%
- June average ice edge 1991-2020
- Source: C3S sea ice cover
- Ice shelf in Antarctica

In June 2024, the **Antarctic sea ice** extent reached **12.2 million km²**, or **12% below** the 1991-2020 average for June.

