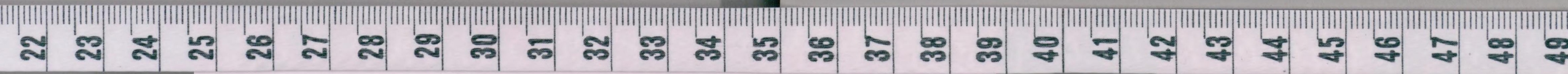
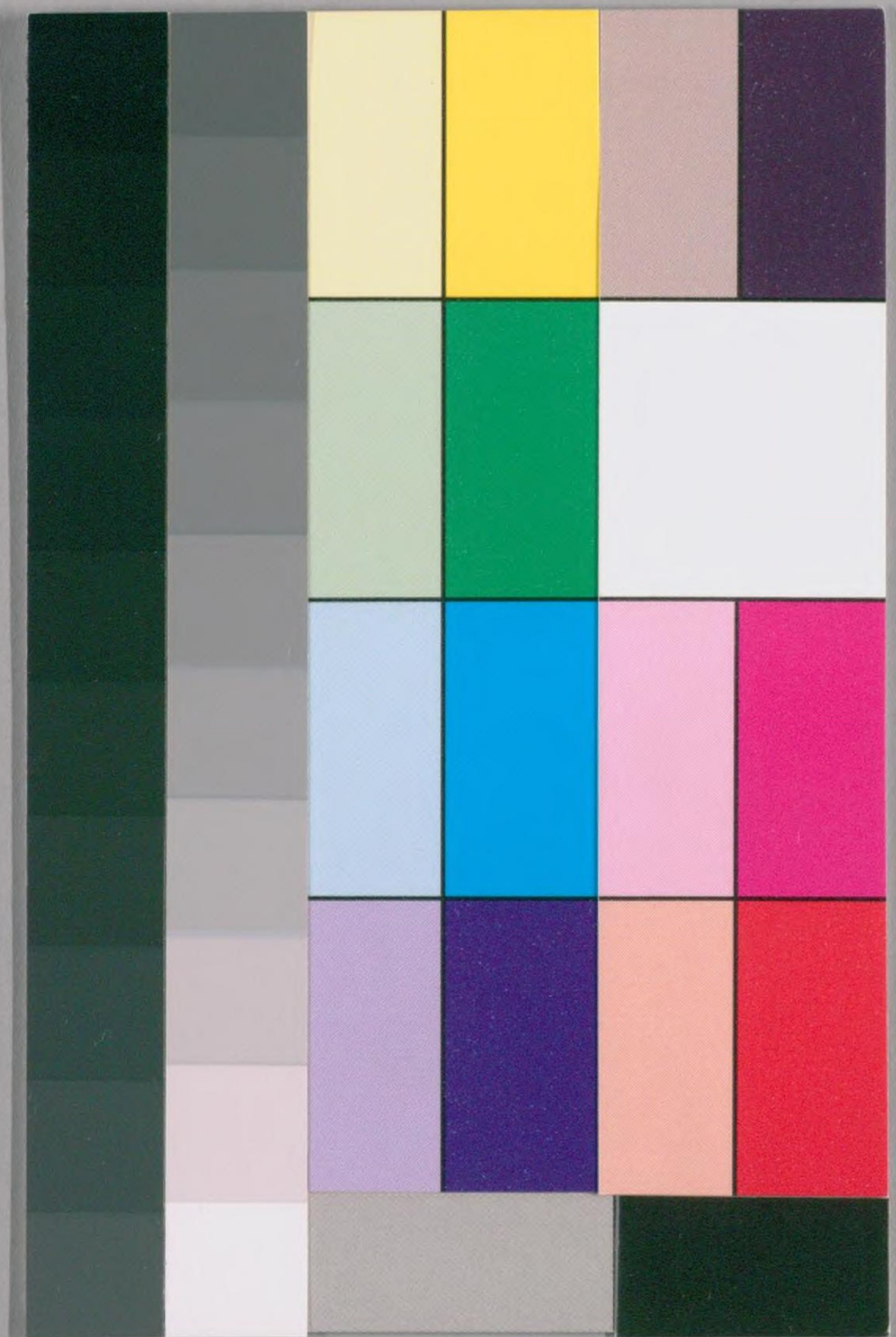


稻妻形鼠標子

別12
15



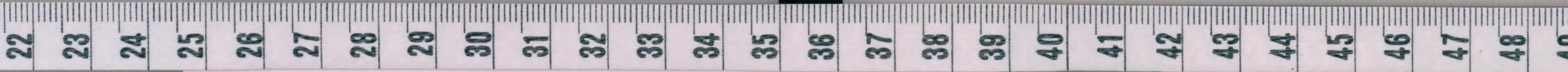
稻妻形鼠標子 下之巻

以安書房蔵





百廿七册





為久

藤吾

Handwritten text in kuzushiji script, likely a dialogue or narrative, surrounding the illustration. The text is arranged in vertical columns, with some characters enclosed in small boxes. The script is dense and fills the space around the figures.



Handwritten text in kuzushiji script, likely a dialogue or narrative, surrounding the illustration. The text is arranged in vertical columns, with some characters enclosed in small boxes. The script is dense and fills the space around the figures.



冠者義高

為久首級

冠者義高
 為久首級
 木村五郎

木村五郎
 為久首級



行氏亡男

棧橋亡男

行氏亡男
 棧橋亡男
 木村五郎

行氏亡男
 棧橋亡男
 木村五郎







行虫果

棹橋天



○

▲





和妻丹七



Handwritten text in vertical columns, likely a narrative or commentary, surrounding the illustration on the right page.



正忠

律戸

Handwritten text in vertical columns, likely a narrative or commentary, surrounding the illustration on the left page.



正忠が母

ASAS



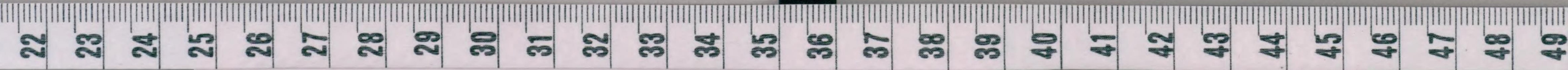
Handwritten text in vertical columns at the top of the page, likely a preface or commentary.



國芳画

備書
交來

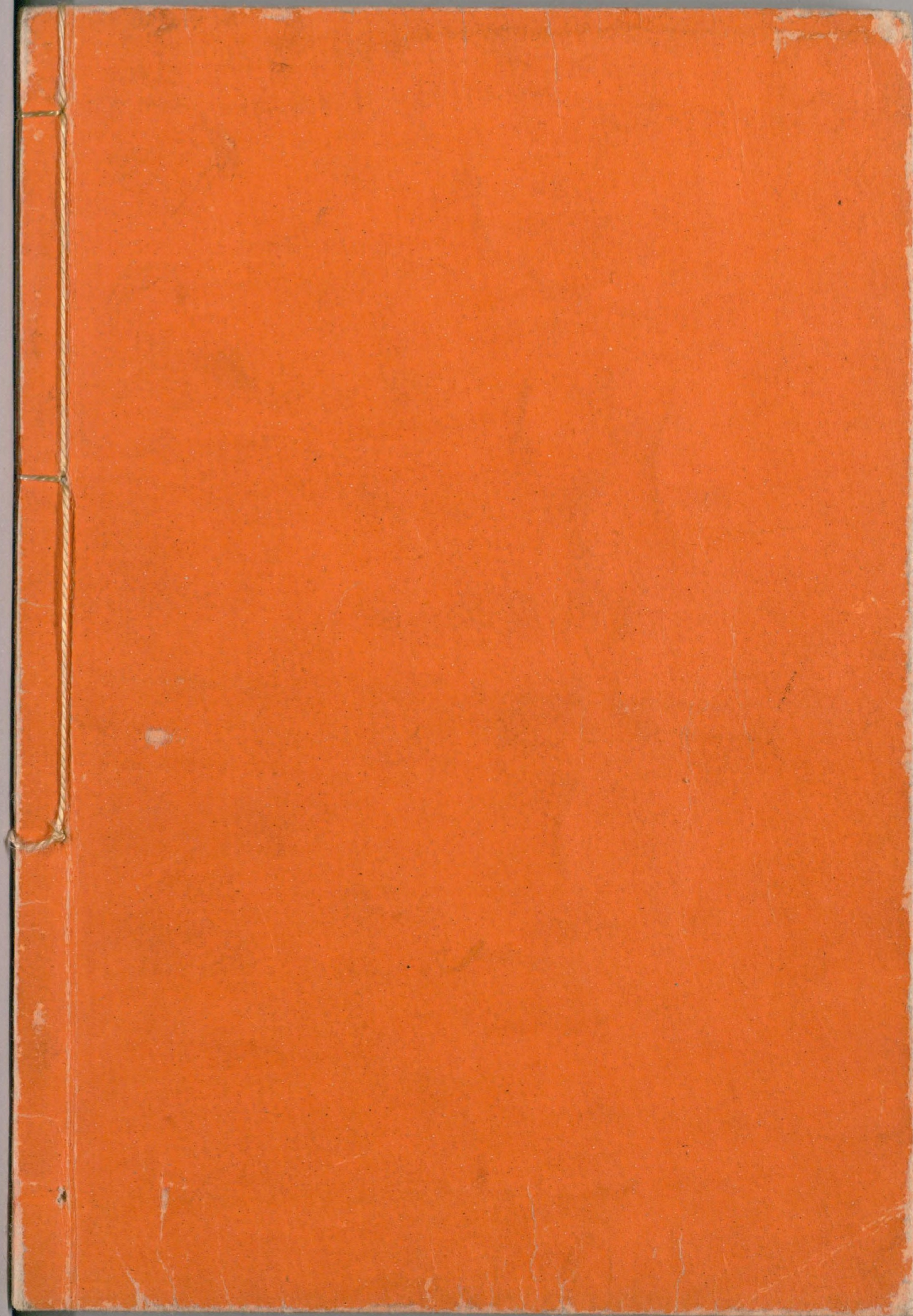
西馬譯



別12
15

稲妻形鼠標本一冊 歌川國芳自筆

昔の先 高記
古吉利市



国立国会図書館 タイトル『稲妻形怪鼠標子』 請求記号 本別12-15

ガラス使用