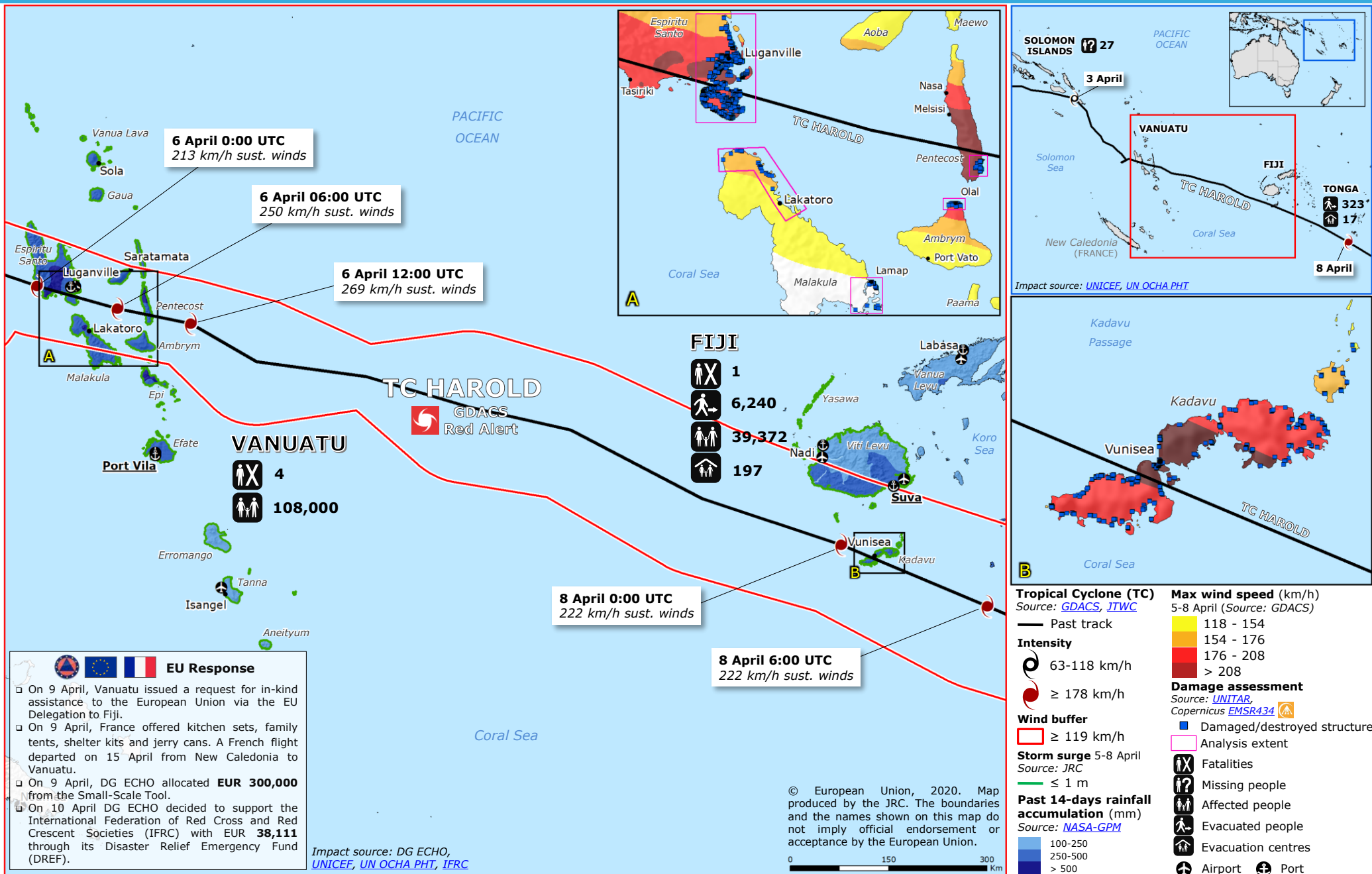


Vanuatu, Fiji | Tropical Cyclone HAROLD



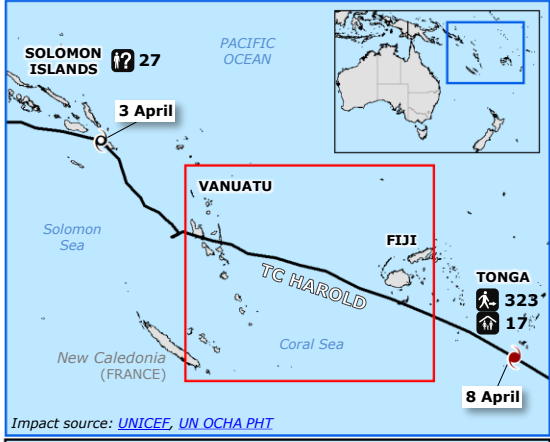
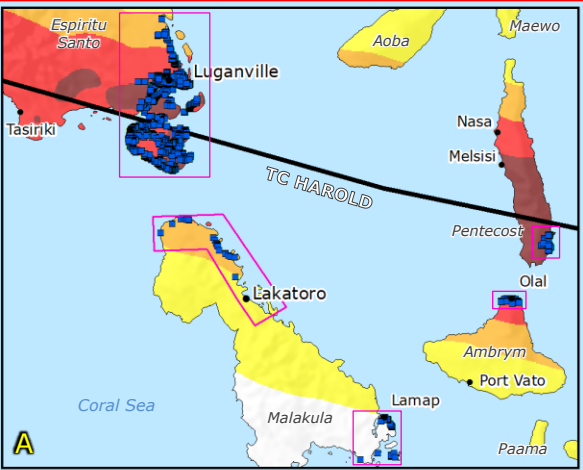
6 April 0:00 UTC
213 km/h sust. winds

6 April 06:00 UTC
250 km/h sust. winds

6 April 12:00 UTC
269 km/h sust. winds

8 April 0:00 UTC
222 km/h sust. winds

8 April 6:00 UTC
222 km/h sust. winds



FIJI

- 1
- 6,240
- 39,372
- 197

VANUATU

- 4
- 108,000

GDACS
Red Alert

Tropical Cyclone (TC)
Source: [GDACS](#), [JTWC](#)

Intensity

- 63-118 km/h
- ≥ 178 km/h

Wind buffer

- ≥ 119 km/h

Storm surge 5-8 April
Source: [JRC](#)

- ≤ 1 m

Past 14-days rainfall accumulation (mm)
Source: [NASA-GPM](#)

- 100-250
- 250-500
- > 500 mm symbol"/> > 500

Max wind speed (km/h)
5-8 April (Source: [GDACS](#))

- 118 - 154
- 154 - 176
- 176 - 208
- > 208 km/h symbol"/> > 208

Damage assessment
Source: [UNITAR](#), [Copernicus EMSR434](#)

- Damaged/destroyed structure
- Analysis extent
- Fatalities
- Missing people
- Affected people
- Evacuated people
- Evacuation centres
- Airport
- Port

EU Response

- On 9 April, Vanuatu issued a request for in-kind assistance to the European Union via the EU Delegation to Fiji.
- On 9 April, France offered kitchen sets, family tents, shelter kits and jerry cans. A French flight departed on 15 April from New Caledonia to Vanuatu.
- On 9 April, DG ECHO allocated **EUR 300,000** from the Small-Scale Tool.
- On 10 April DG ECHO decided to support the International Federation of Red Cross and Red Crescent Societies (IFRC) with **EUR 38,111** through its Disaster Relief Emergency Fund (DREF).

Impact source: [DG ECHO](#), [UNICEF](#), [UN OCHA PHT](#), [IFRC](#)

© European Union, 2020. Map produced by the JRC. The boundaries and the names shown on this map do not imply official endorsement or acceptance by the European Union.

