

CONFIDENTIAL  
JAPAN  
AREA H-1 NANSEI SHOTŌ

Change #15  
May 1944

600 - Geography  
603 - Coast Defenses, etc.  
300 - Airbases, etc.

20. Off Shimajiri village, Kume Shima, 26-18 N., 126-48 E.

Reported seaplane anchorage or base.



Exact location unknown.



CONFIDENTIAL  
 JAPAN  
 AREA H-1 NANSEI SHOTŌ

Change #15  
 May 1944

600 - Geography  
 603 - Coast Defenses, etc.

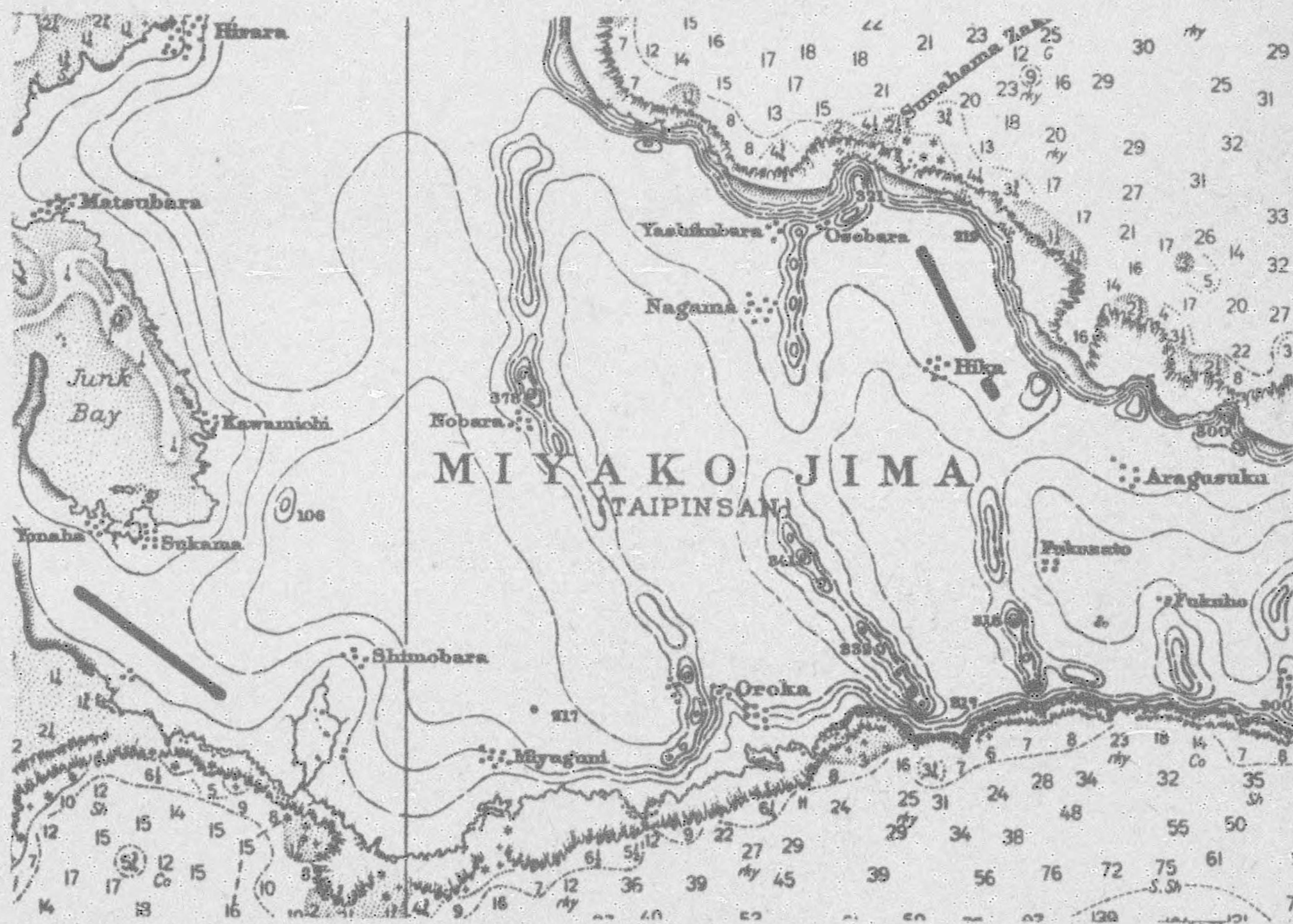
300 - Airbases, etc.

21. Miyako Hakuchi, Miyako Shima, 24-53 N., 125-17 E.  
 (See map, page

Seaplane anchorage 2 1/2 miles x 1 mile.

22. Miyako Shima.

Naval emergency landing field variously reported at 24-47 N.,  
 125-25 E., and 24-43 N., 125-18 E.





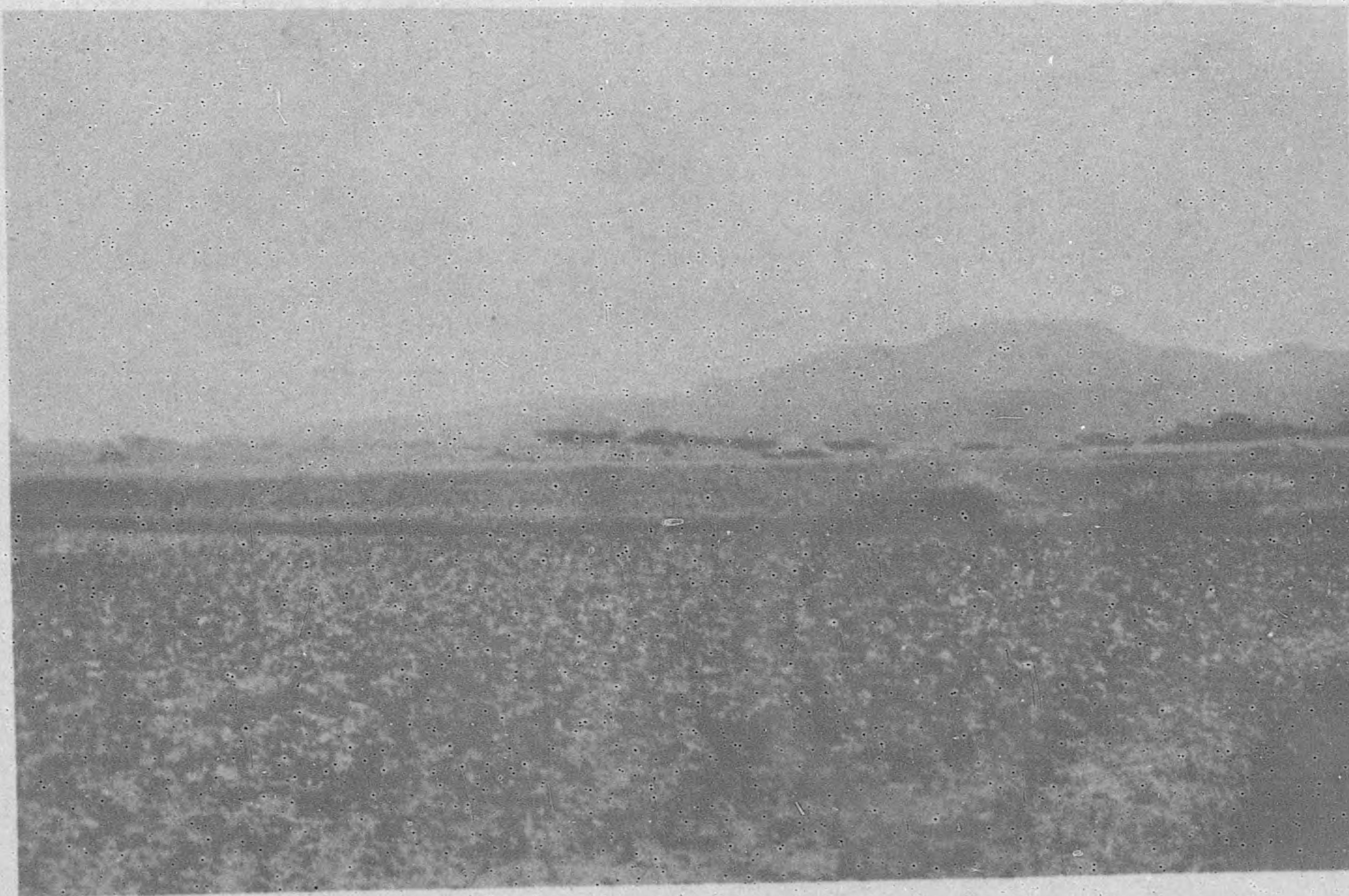
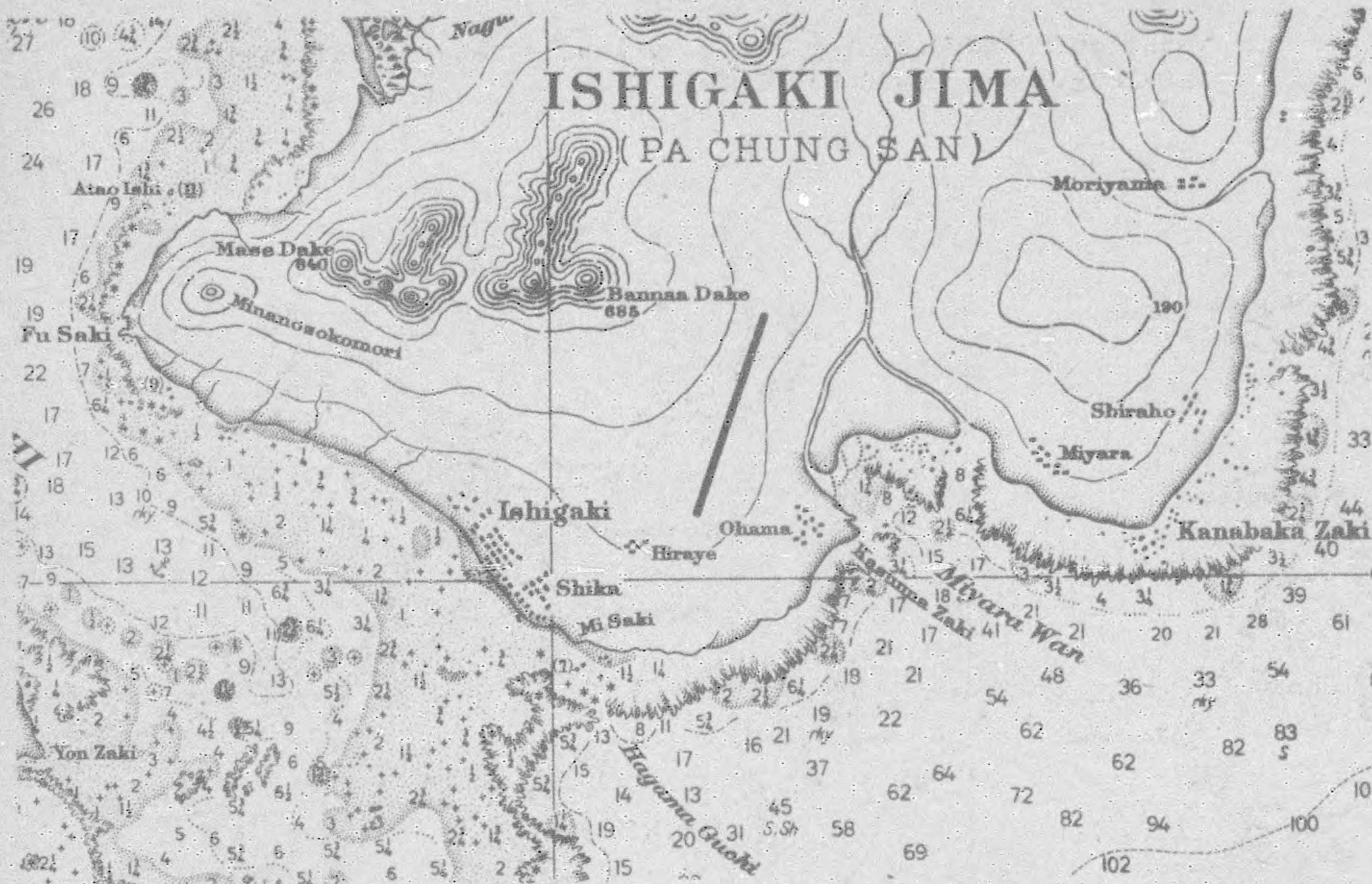
CONFIDENTIAL  
JAPAN  
AREA H-1 NANSEI SHOTO

Change #15  
May 1944

600 - Geography  
603 - Coast Defenses, etc.  
300 - Airbases, etc.

23. South central Ishigaki Shima, 24-22 N., 124-12 E.

Airfield with radio to the E. of N. - S. interior road. Re-  
portedly military.



Ishigaki Shima. Old photo of approximate location of airfield.  
Omoto Take in background.



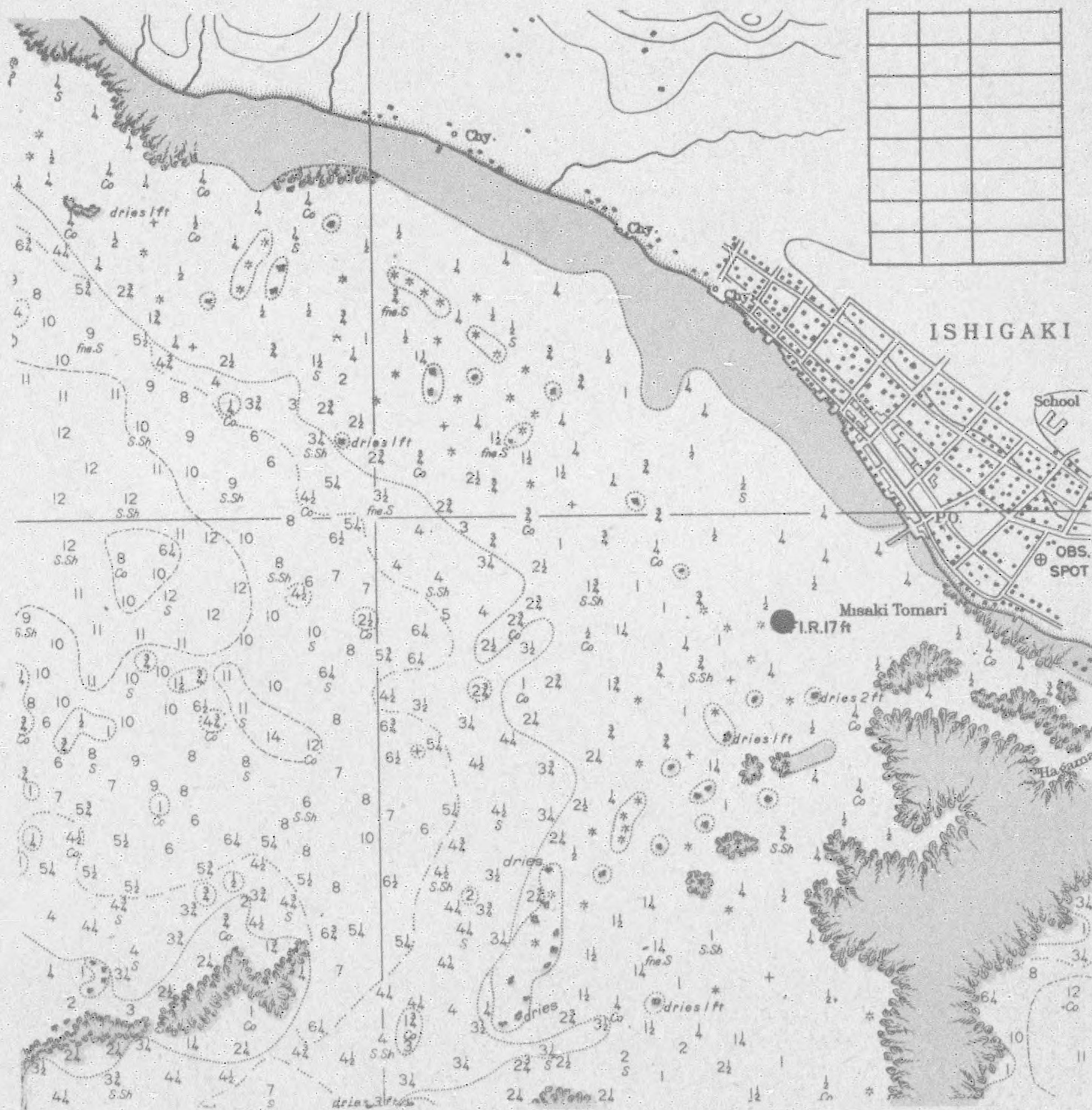
CONFIDENTIAL  
JAPAN  
AREA H-1 NANSEI SHOTO

Change #15  
May 1944

600 - Geography  
603 - Coast Defenses, etc.  
300 - Airbases, etc.

24. Off Ishigaki town, Ishigaki Shima, 24-20 N., 124-09 E.

Seaplane anchorage or base, approximately 2 miles by 3/4 mile  
with some shoals and reefs.





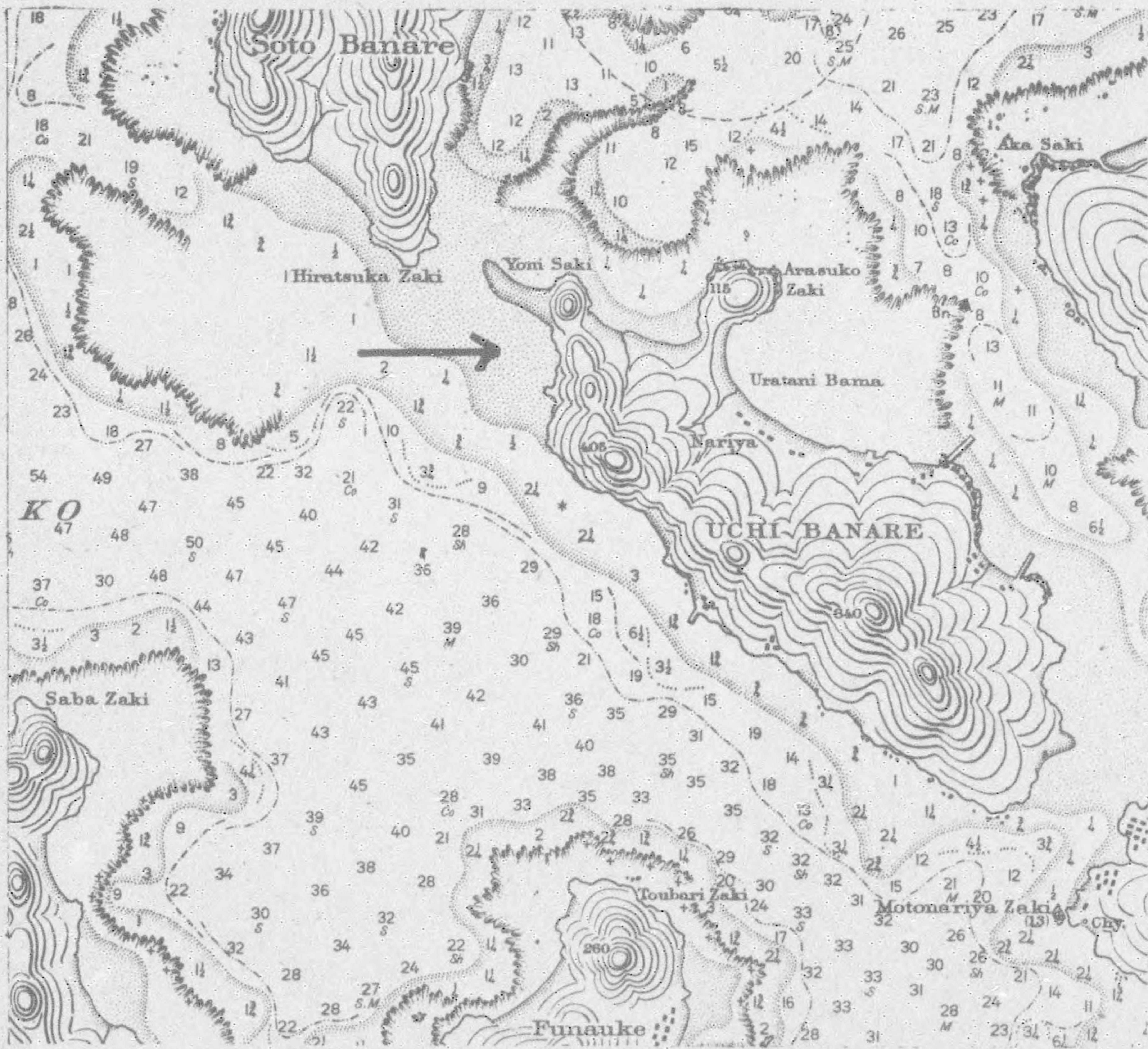
CONFIDENTIAL  
JAPAN  
AREA H-1 NANSEI SHOTŌ

Change #15  
May 1944

600 - Geography  
603 - Coast Defenses, etc.  
300 - Airbases, etc.

25. Funauke Kō, Iriomote Shima, 24-21 N., 123-43 E.

A seaplane anchorage or base, located at the N.W. end of Uchi Hanare.  
The area is fortified.





CONFIDENTIAL  
 JAPAN  
 AREA H-1 NANSEI SHOTŌ

Change #15  
 May 1944

600 - Geography  
 603 - Coast Defenses, etc.  
 300 - Airbases, etc.

26. Honai Wan, Iriomote Shima, 24-25 N., 123-46 E. (See map, page  
 Reported emergency seaplane anchorage.
27. Minami Daitō Shima, 25-50 N., 131-13 E.  
 Reported military landing field.



Land in the E. central part of the island, E. of Kyūto, appears suitable for an 8,500-foot field with a N.N.E.-S.S.W. orientation.



CONFIDENTIAL  
JAPAN  
AREA H-1 NANSEI SHOTŌ

Change #15  
May 1944

600 - Geography  
603 - Coast Defenses, etc.  
500 - Mined Areas

A stock of mines is kept at Ōshima Kaikyō.

700 - Other Facilities

Radar is reported in the vicinity of Akuseki Shima (29-27 N., 129-34 E.), in the Naha Area, and at an unlocated lookout station on Ishigaki Shima in Sakishima Guntō.

Radar installations are probably more extensive than reports indicate.



CONFIDENTIAL  
 JAPAN  
 AREA H-1 NANSEI SHOTŌ

Change #15  
 May 1944

600 - Geography  
 615 - Miscellaneous  
 200 - Historical

(The Satsunan Islands of the Nansei Shotō, excluding Amami Guntō, are essentially Japanese, and from an historical standpoint, need not be considered separately.)

RYŪKYŪ ISLANDS

- 605 Chinese began an intermittent series of invasions of the independent kingdom of Ryūkyū (Luchu), but they did not result in annexation.
- 1300 Establishment of the reign of Shunten, exiled member of the Japanese Minamoto family, who married and settled down in the islands. The introduction of the arts of reading and writing are ascribed to his era.
- 1372 China obtained recognition of supremacy from the Luchuans.
- 1609 At the close of the 16th century the Luchuan king refused Japanese assistance against Korea, and in 1609 the prince of Satsuma invaded the islands with 3,000 men, took the capital by storm, captured the king, and carried him off to Kagoshima. A few years later the king was restored to his throne on condition of acknowledging the suzerainty of Japan. For a period thereafter the Luchuans paid tribute to both China and Japan.
- 1879 Japan dethroned prince and converted the islands into a prefecture called Okinawa. China remonstrated, but eventually the Japanese title ceased to be disputed.
- Through education, conscription, and a carefully supervised system of local government, most of the Ryūkyū population undoubtedly has come to feel itself an integral and permanent part of the Japanese Empire.



CONFIDENTIAL  
JAPAN  
AREA H-1 NANSEI SHOTŌ

Change #15  
May 1944

PLACE INDEX

- A -

Abusoko Hana	53
Ada	77, 213, 222
Adagaa	29
Adange Saki	287
Afuso	75
Agare	101
Agarie	218
Agari-henna Saki	84
Agari Saki	88
Agenashiki Shima	228
Agono Ura	229
Aguni	226
Aguni Shima	73, 78, 113, 121, 130, 137, 226, 273, 275, 282
Aha	77, 222
Aiko Take	56
Ajiki-shin Saki	81
Aka	223, 295
Akagi Saki	63
Aka Kaikyo	227, 228
Akakina	67, 160, 170, 175
Akamaru Saki	213, 290
Akaogi	67, 101, 129, 160, 168, 171, 175, 179, 271, 275, 277, 286
Akaogi Kō	70, 175
Akaogi Shima	92
Akare	177, 179, 271
Aka Saki	238, 240, 300
Akasaki Yama	82
Akase-no-Hana	82
Aka Shima	78, 221, 227
Akina	175, 287
Akuseki Shima	60, 62, 64, 137, 156, 276, 277, 302
Amagi	182
Amami Guntō	7, 9, 51, 65, 135, 136, 160-188, 271, 274, 278, 284
Amami-Ō-Shima	9, 11, 28, 65, 66, 70, 71, 101, 121, 127, 129, 132, 136, 138, 160-176, 271, 272, 273, 275, 281, 286, 54, 99, 144, 145
Ambo	11, 129, 138, 144
Ambo Kawa	221, 290
Amisoko	86
Amitori	66
Amuro	82
Amuro Shima	166
Amuro Wan	183
Angusuku	175
Ankyaba	96
Anno	240
Antori Wan	297
Aragusuku	86
Aragusuku Shima	88, 255
Araka Hana (Bana)	256
Arakawa Hana	67, 177
Araki	61, 74
Ara Saki	240, 300
Arasuko Saki	121, 223
Aratake	221
Arauji Shima	63
Areki Saki	213
Arume	



CONFIDENTIAL  
 JAPAN  
 AREA H-1 NANSEI SHOTŌ

Change #15  
 May 1944

PLACE INDEX  
 (Cont'd)

- A -  
 (Cont'd)

Arumi	290
Arumi Wan	77
Asato	177,292
Asato Kawa	190,195,203
Ase	74
Ashi (Ose)	189,191,194,199,211,294
Ashiken	166
Ashiko	69
Ashin	227
Atakase	81
Atsuta	110
Awa	76,218,290
Awara	227
Awara Kō	229
Awara Saki	229
Ayamaru Saki	67,175

- B -

Bamahija Hanare	75
Banna Take	91
Banno Saki	75,213
Banya Mine	58,150
Baten	189,209,294
Baten Kō	74,111,189,190,209,211,282,294
Benoki	77,222
Benten Saki	172,173,279
Bise	76,290
Bise Saki	76,213,290
Boma	182
Bora	115
Borose Saki	67
Buun Saki	67
Buran Yama	81
Buren	66

- C -

Chabana	69,188
Chimu	75,129,282,290
Chimu Saki	75,190,290
Chimu Wan	75,109,189,212,290
China	69,137,186,189,194,273
China Saki	74
Chinen	294
Chinen Miso	75
Chinzei (Shodon)	66,104,160,163,164,273,280
Chise	75,218
Chiyamu	74,189,194,212
Chiyamu Saki	74,276
Choda	218
Chose	222
Curlew Bay	166



CONFIDENTIAL  
 JAPAN  
 AREA H-1 NANSEI SHOTŌ

Change #15  
 May 1944

PLACE INDEX  
 (Cont'd)

- D -

Daikatsu	67,175
Daikinku	105
Daikuma	173,279
Daikuma Kō	173,279
Daitō Shima	7,9,13,51,95,131,274,278,284
Daitō Shotō	12,14,30,199

- E -

Edato Shima	66,160
Erabu	84
Erabu Shima	83,250,251,252,253,254,271

- F -

Fude Iwa	84
Fuden Saki	78,226
Fukai	87
Fukase Shima	229
Fukaura	287
Fukezato	297
Fukuho	297
Funauke	21,120,238,240,241,273,300
Funauke Kita Wan (Nakara Kō)	237,238,242,271
Funauke Kō	86,92,130,237,238,239,240,241,275,277,300
Furu Take	56, 58
Fu Saki	247,298
Futoda Take	56

- G -

Gabu	221
Gaja	231
Gaja Shima	60,61,64,137,157
Gakiya Wan	231,232
Gamo Saki	67,70,175
Gima	79,114,222,224,225,273,296
Gima Kō	21,79,82,225
Ginama	77,222
Ginan Saki	77,213
Gizuno Saki	230
Goto Yama	56
Gowaka Mori	81
Guga	221,290
Gukiya	20
Gunome Misaki	61,153
Gushicha Heido	76
Gushichan	189
Gushicha Shima	76
Gushikawa	295
Gushikawa Shima	29
Gusuku	160,167,177
Gusuku Bana	167
Gusuku Saki	76,232,233
Gusuku Shima	82,230



CONFIDENTIAL  
 JAPAN  
 AREA H-1 NANSEI SHOTŌ

Change #15  
 May 1944

PLACE INDEX  
 (Cont'd)

- H -

Haderuna	86
Haderuna Shima	83,86,243,258
Haebara	189
Haemi	86
Haemi Saki	86
Hae-no-Hama	62,158
Hagama Guchi	87
Hako Saki	53
Hama	78,226
Hamamoto Wan	76,220
Hamasaki	219
Hamatsubaki	53,139
Hamawaki	285
Hanebu Saki	188
Harimizu Kō	254
Ha Saki	173,279
Hatoma Shima	86,92,276
Hatoma Suido	86
Hayama	53,151
Hedona	213
Hedo Saki	77,213,216,276
Heianza Nanare	75,294
Heike-mori	288
Henoki	213
Henoko Saki	81
Henoko Take	81
Hentona	194,216
Hianna (Higashi Henna) Saki	276
Higashi Amagi	182
Higashi Hama	81
Hijiri Yama	56
Hika	297
Hinai	88,255,256
Hinai Ura	238
Hiradoko-no-Hana	58
Hirakobu	246
Hirakobu Saki	87
Hirao Saki	61
Hirara	9,84,115,250,251,252,253,254,273,297
Hiratsuka Saki	240,300
Hiraye	246,298
Hirota	53
Hizeno Saki	147
Hodono	68,182
Hodono Kō	68,182
Hogami	219
Hokaji Shima	78
Honai Wan (Urauchi Wan)	243,301
Honmura	55,148,149
Honshi Saki	255
Hoshi Shima	221
Hoshitate	188,238,240
Hya jō	295
Hyaku-no-Dai	72,177



CONFIDENTIAL  
 JAPAN  
 AREA H-1 NANSEI SHOTŌ

Change #15  
 May 1944

PLACE INDEX  
 (Cont'd)

- I -

Ibaruma	87
Ibaruma Hantō	244, 246
Ibu	77
Ichi Hanare	75, 212
Ichi Saki	67, 160, 167
Ie Shima	73, 76, 113, 129, 137, 199, 213, 214, 216, 217, 222, 275, 282, 288.
Ie Suidō	76, 213
Igira Yama	81
Iheya Rettō	29, 76
Iheya Shima	20, 29, 73, 76, 132, 137, 199, 231, 232
Ikeji	164
Ikeji Wan	165
Ikema Shima	84, 250, 253
Ikemasoe	116
Ikenosawa	261, 262, 301
Ikomo	287
Ikomo Wan	66, 160, 165
Imai Saki	67
Inamine	215
Inobe	69, 107, 186, 187
I-no-Kawa	68
Inutabu Misaki	181
Inutabu Saki	68
Iō Shima	56, 57, 151
Iō Shima Shintō	151
Iō Take	151
Irihenna Misaki	84, 114
Irii Saki	88
Iriomote Shima	11, 31, 83, 86, 90, 117, 122, 130, 131, 132, 135, 136, 137, 138, 235-243, 271, 273, 300, 301.
Irisuna Shima	30, 78, 234
Isago	177
Isaneku	177, 288
Isen	182
Isen Saki	28, 68, 181
Ishigaki	9, 13, 15, 87, 138, 244-249, 275, 277, 298, 299
Ishigaki Hakuchi	87, 91, 245, 247, 248, 250, 258
Ishigaki Shima	9, 31, 83, 87, 89, 116, 122, 130, 131, 132, 135, 137, 138, 244-249, 271, 272, 275, 276, 298, 299, 301.
Ishikawa	74, 109, 189
Ishimine	189
Ishi Saki	87, 91
Issō	20, 54, 100, 146
Issō Kawa	146
Issō Wan	145, 146
Isu Wan	66, 104, 160, 164, 167
Itagino Hana	146
Itokazu	189
Itoman	9, 74, 189, 192, 193, 194, 212
Itoman Kō	212
Itowan	137
Iwayadomari	55, 150
Iwo Shima	52, 55, 137, 172
Izena	76, 232, 233
Izena Kō	232, 233
Izena Shima	73, 76, 232, 233, 271, 273



CONFIDENTIAL  
 JAPAN  
 AREA H-1 NANSEI SHOTŌ

Change #15  
 May 1944

PLACE INDEX  
 (Cont'd)

- J -

Jichaku	221,232,233
Jitsuru Shima	82
Jiyaruma Shima	221
Jo-no-Hana	55,58,150
Jō San	82

- K -

Kaashii Saki	230
Kabira	87,246
Kabira Kō	249
Kaburi Hana	152
Kado	175
Kadokina Misaki	53
Kagamisui	292
Kaganshi	77
Kaimon Take	56
Kaitsu Saki	66
Kakeroma Shima	66,160,161,162,163,164,271,273,276,280
Kakibana	292
Kakise	53
Kametoku	68,182,183
Kametsu (Kamezu)	68,182,183,273
Kametsu Hakuchi (Kamezu)	68,181,182,183
Kamiiji	251
Kamino-furuta	285
Kami-no-Misaki	53
Kami-no-ne-Sho	60,63,159
Kami-no-Shima	58
Kamiyama Shima	234
Kanabako Saki	87,298
Kanami Saki	181
Kanawashi Iwa	81
Kanchi Shima	86
Kanegusuku	189
Kanehama	173,279
Kaneku	173,279
Kanemi Saki	68
Kanente Saki	281,287
Kanna	290
Kanninsaki	181,183
Kannon Saki (Fu Saki)	87,91,116,247,248
Ka-no-Kawa Wan	86,131,239,243
Kanrei Saki	68
Kantena Wan	220,221
Karyu	287
Karimata	250,251,253
Kasakaki Shima	58
Ka Saki	66
Kasari	175
Kasari Saki	67,160,175,276
Kasari Wan	20,28,67,70,160,168,175
Kasunna Saki	298
Katchin	189



CONFIDENTIAL  
 JAPAN  
 AREA H-1 NANSEI SHOTŌ

Change #15  
 May 1944

PLACE INDEX  
 (Cont'd)

- K -  
 (Cont'd)

Katchin Hantō	196,294
Katekari	251
Katena	10,137,189,194,195
Katoku	103
Katsuo Saki	61
Katsuren Wan (Katchin)	75,211
Katsuyoku	287
Kawamichi	297
Kawamitsu	84,253
Kawata	213
Kawata Wan	77
Kayama Shima	87,132
Kedome	287
Keise Shima	74,234
Kenken	219
Ken Saki	233
Keraji	177
Kerama Kaikyō	21,82,227,228
Kerama Retto	29,73,78,137,199,203,227-230
Kerama Shima	78, 82
Keten	287
Ketoku	107
Kichipu Shima	221
Kikai Shima	20,28,65,67,72,101,124,125,132,136,171, 177-180,271,275,276,282,288.
Kinen Saki	68,181
Kiriishi	62
Kiriishi Hakuchi	155
Kise	175
Kita Daitō Shima	93,94,95,137,262,269-270
Kitakame Hana	150
Kita-Kō-Shima	85,260
Kita Mura	137,261,301
Kita Wan	216
Kitoku	68,181,182
Kitoku Wan	184
Kobakura	137,194,292
Kobama	132
Kobama Kōmon	31,86,243
Kobama Shima	86,237,238
Koba Shima	78, 82
Kobatakeno Saki	230
Kōbi Shima	92
Kōbi Sho	21,30,85,260
Kochi	218,222
Kodama	103
Ko-Gaja Shima	60,61,64,158
Kogoma	187
Kogusuku	290
Kokuba	74,137,189
Kokuba Kawa	190,194,195,203,208,276
Kominato	67,102,160,167,170
Komiya	288



CONFIDENTIAL  
 JAPAN  
 AREA H-1 NANSEI SHOTO

Change #15  
 May 1944

PLACE INDEX  
 (Cont'd)

- K -  
 (Cont'd)

Koniya	9,66,136,160,161,162,163,164,170,171,273,275, 276,280,286,287.
Koniya Kō	165
Koseda	54,144
Kose Kawa	184
Koshi	287
Ko Shima	53,63,158,248
Ko-Takara Shima (Kodakara)	60,63,64,132,156,158
Kotake	81
Kouri	221
Kouri Shima	76,220,221,290
Kowan	74
Koyama Shima	155
Kuba	175
Kuba Saki	211,294
Kubera	255
Kubera Take	92
Kubota	285
Kuchi-no-Erabu Shima	20,26,52,55,56,58,148-150
Kuchi-no-Erabu Wan	58,148,149
Kuchi-no-Shima	60,61,64,137,153-154
Kuchinoshima Hakuchi	153
Kudadon	287
Kuefu Shima	234
Kuiri Hana	233
Kuji	66,160,162,163,164,165,272,280,286,287
Kuji Kō	165
Kuji Wan	160,164,165,287
Kukinago	139
Kumano Ura	141
Kume Shima	21,30,73,79,80,82,114,121,130,132,137,199, 223-225,273,275,276,283,295,296.
Kunigami	69
Kunigami Misaki	69,185
Kunikami	285
Kurawa	74,212
Kurema Shima	84
Kuro Saki	54,150,286
Kuro Shima	52,55,56,57,78,83,87,132,137,152,172,227,237,238
Kuruma Shima	250
Kuryū	54,143,145,286
Kusakaki Kami-no-Shima	152
Kusakiki Shima	52,55,152,273
Kusakawa	54
Kushi Take	81
Kusugawa	148
Kutaka Kuchi	75,294
Kutaka Shima	75,189,276,282,294
Kuteken	189
Kuzū Saki	74
Kyamma Yama	281
Kyūto	261,301



CONFIDENTIAL  
 JAPAN  
 AREA H-1 NANSEI SHOTŌ

Change #15  
 May 1944

PLACE INDEX  
 (Cont'd)

- L -

- M -

Machinato	74,212
Machishi	292
Mae-no-Hama	153,154
Mae Shima	78,227
Mae Take	153
Maeyama	103
Magari	296
Magari Saki	77
Mage Shima	23,52,53,132,151
Majichiya Shima	221
Makiya	221
Mankura Saki	81
Manya	67,160,175
Masada	53
Ma Saki	66
Matambashi	292
Matomari	295
Matsubara	68,297
Matsubaru	253
Mawashi	189
Mayedomari	231
Mayegomori	157
Mayehira	231
Megami Yama	157
Me-ga-Saki	55,58,150
Menna Shima	213
Mifuku Shima	221
Minami Daitō	16
Minami Daitō Shima	21,93,94,95,131,135,137,261-262,272,276,301
Minami-kō-Shima	85,260
Minami Mura	137,261,301
Minanozoko Mori	91,298
Mina Shima	30
Minato	53,285
Minato Hana	146
Minatokawa	74,184
Minato Ura	141
Minna Shima	76,83,85,258
Mi Saki - Ishigaki Shima	298
Mi Saki - Tane-ga-Shima	53,285
Mi Saki - Yaku Shima	54
Mi Saki - Yanaha Shima	233
Misaki Tomari	299
Misato	66,160,167
Mishima Saki	58,149
Mitearai Wan	152
Miyako Hakuchi	21,22,84,250,252-254,258,297
Miyako Retto	30
Miyako Shima	9,30,83,84,114,130,135,137,250-254, 271,273,283,297.



CONFIDENTIAL  
 JAPAN  
 AREA H-1 NANSEI SHOTŌ

Change #15  
 May 1944

PLACE INDEX  
 (Cont'd)

- M -  
 (Cont'd)

Miya-no-Ura	54,99,139,144,145,147,273
Miyanoura Kawa	147
Miya-no-Ura Mine	143
Miya-no-Ura Take	56
Miyara	117,246,298
Miyara Wan	249,298
Miyasato	218
Miyegusuku	81,208,292
Miyugumi	297
Moriyama	298
Mo Saki	287
Motobu	9
Motobu Hantō	195,213,216
Motonariya Saki	119,240,300
Moto Ura	145,146
Mukaehama	55,149
Mutade Yama	281
Myogan Saki	175
Myojin Saki	67

- N -

Nagagusuku Wan	20,110,130
Naga Hama	98
Nagaishi Saki	248
Nagama	250,297
Nagamine	288
Nagamine Yama	81
Nagannu Shima	234
Nagara	66,164
Nagara Wan	166
Naga Shima	81
Nagata	54,100,145
Nagata Take	56
Nagijin	213
Nago	9,76,112,138,195,199,214,215,216,217,218,290
Nago Take	81,290
Nago Wan	76,213,214,217,218,290
Nagura	248
Nagura Wan	87,91,247,249
Naha	9,15,17,22,74,129,131,135,136,137,138,189,190, 192-209,217,272,273,275,276,282,291,292,293,302.
Naha Kō	20,29,74,81,137,194,199,203-209,275,282,291,292.
Na Ji	82
Nakabise Saki	67,167
Nakada	66
Nakadomari	189
Nakagusuku Wan	75,189,190,191,209-211,275,276,282,294
Nakama	75,160,167,177,222,286
Nakama Wan	86
Naka-no-kami Shima	259
Naka-no-Shima	20,60,61,64,136,137,154-155,275,277
Nakao	221
Nakaogu	221



CONFIDENTIAL  
JAPAN  
AREA H-1 NANSEI SHOTO

Change #15  
May 1944

PLACE INDEX  
(Cont'd)

- N -  
(Cont'd)

Nakara Kō (Funauke Kita Wan)	86,237,241,242
Naka Shima	78
Nakasone	76
Nakata	232
Nakazato	295,296
Nakijin	290
Nakijin Magiri	221
Nako Hama	221
Nakoshi	76,111
Namumi Saki	81,190,206,292
Naon	66,167
Nariya	300
Naze	9,13,15,16,17,66,105,129,135,136,137,138,160,162, 168,169,170,171,172,173,174,273,277,279.
Naze Kō	66,105,160,169,172,173,174,275,277,279,286
Nemachi Shima	221
Nepa	269
Nesubu	66
Nishibaru	189
Nishikaku	292
Nishikomi	20,66,106,162,163,164,287
Nishikomi Ura	162,271,287
Nishi-nakama	66
Nishi-no-Hama - Kuchi-no-Shima	61,153,154
Nishi-no-Omote	9,53,98,137,139-140
Nishi-no-Omote Wan	20,139,140,271
Nishi Saki	86,243
Nishi Ura	150
Nizumi Saki	62
Nobara Saki	86
Noginotai	285
Noho Shima	76
Noka-no-gan Shima	88
Nokara Saki	229
Noma	53,97,139
No Saki	55, 58
Nosuko Saki	240
Nozoko	245
Nozoko Saki	87
Nu Saki	82,230

- O -

Obaru Shima	221,290
Ochimizu Saki	86
Odana	105
Odo	189,190
Ogami Shima	84,253
Ogan	82
Ogan Saki	87
Ogimi	77
Ogomori	157
Ohama	87,117,246,298
Ohara-saki	285
Ohirono	285



CONFIDENTIAL  
 JAPAN  
 AREA H-1 NANSEI SHOTO

Change #15  
 May 1944

PLACE INDEX  
 (Cont'd)

- 0 -  
 (Cont'd)

Okami Saki	91, 248
Okaneku (Nago)	213, 214, 216, 218, 290
Okinaga	189
Okinawa Guntō	7, 9, 51, 108, 135, 136, 189-234, 271, 274, 278
Okinawa Shima	9, 11, 29, 73, 74, 75, 76, 77, 80, 108, 122, 124, 126, 129, 132, 135, 136, 137, 138, 160, 162, 189-222, 271, 272, 273, 275, 288, 290, 291, 294.
Okī-no-Daitō Shima	11, 16, 93, 94, 130, 131, 137, 263-268, 272, 276
Okī-no-Erabu Shima	29, 65, 69, 71, 107, 136, 138, 185-187, 271, 273, 276.
Okī Wan	61
Oku	77, 285
Oku Kō	77, 222
Ombo Saki	55
Ōmine	74, 292
Ōmine Hama	74
Ōmine Yama	81
Omōnawa	68, 181, 182
Omoto Take	91, 244
Onna	212
O-no-aida	54
Ono Misaki	294
Onotsu (Onozu)	177, 288
Ō-no Yama	81
Onozu	67
Ōra	253
Ōra Kō	81
Ōra Wan	81, 108, 222
Ori Saki	150
Orogame Shima	233
Oroka	297
Oroku	189, 291, 292
Ōro Wan	20
Ōsaki	53, 56, 129, 139, 247, 275, 277, 285
Osato	189
Osebara	297
Ose Kawa	183
Ō Shima Kaikyō	28, 66, 129, 160, 161, 164, 165, 275, 276, 280, 287, 302
Ōsumi Guntō	7, 9, 12, 51, 56, 57, 58, 96, 136, 139-152, 271, 274, 278, 284, 285.
Ōsumi Kaikyō	23, 52
Osunohana	290
Ō Take (Uegusuku)	82, 154, 223
Ō Take Saki	56
Ō Ura	20, 53, 56, 141, 142
Ōura Tomari	62
Ōura Wan	75
Ōyama Saki	66

- P -



CONFIDENTIAL  
 JAPAN  
 AREA H-1 NANSEI SHOTŌ

Change #15  
 May 1944

PLACE INDEX  
 (Cont'd)

- Q -

- R -

Ryūkyū Islands (Loochoo, Liuchiu, Luchu) 7,303

- S -

Saba Saki	86,240,300
Sachibaru Saki	74
Sadeku	177
Sadekuma	172,173,279
Sagi-no-Saki	63
Saiku	162,271
Sakibara Saki	68
Sakibari Saki	292
Sakibaru Saki	81,207,294
Sakimotobu	219
Sakiga Saki	157
Sakishima Guntō	7,9,50,83,86,87,114,135,136,199, 235-259,271,274,278,284,301.
Sakiyama	86
Sakuchi Shima	221
Sakuraen	285
Sammura (San)	68,106,184
Sammura Saki	68
Sammura Wan	20,68,181,182,184
Sanapi	294
Sarahama (Sarabama)	84,251,254
Saruko Saki	66
Sato	61,154
Satombare	183
Satsukawa	66,287
Satsukawa Wan	66,160,164,165,280,287
Satsunan Islands	7,127,303
Sawada	84,251
Sedake	80
Segiri	59
Seisui	287
Sekerubu	175
Sekibi Shō	30
Senaga Shima	74,81
Senakaku Guntō	83,85
Sento Shoshō	7,9,30,50,83,92,260,274,278,284
Serii Misaki - Kuchi-no-Shima	61,153
Seso	287
Sesoko	219
Sesoko Byōchi (Sesoku)	20,76,213,219,282,290
Sesoko Hakuchi	213
Sesoko Shima	76,219
Setake	287
Seto Saki	213



CONFIDENTIAL  
 JAPAN  
 AREA H-1 NANSEI SHOTO

Change #15  
 May 1944

PLACE INDEX  
 (Cont'd)

- S -  
 (Cont'd)

Shana Wan	77,213,215,216,222,290
Shan Saki	69,185
Shidaya	81
Shidonoma Saki	233
Shika	298
Shikaura	68
Shimajiri	79,223,224,231,253,283,296
Shimajiri Kō	231
Shimajiri Wan	30,79,225,231,232
Shimama	53,139,272
Shimama Hakuchi	141
Shimama Saki	53,141
Shimobara	297
Shimoji Shima	83,116,253
Shimonaka	97
Shimo-no-Misaki	53
Shimo-no-Shima	58
Shimo Saki	252
Shimo Yaku	138,286
Shin Higashi Mura	137
Shin Kawa	172
Shinmura	149
Shinto	261,301
Shiokawa	85
Shiomichi	288
Shirahama	86,238
Shiraho	246,298
Shiramizu	288
Shiru Saki	221
Shitooke	177,288
Shitsuru Saki	67
Shitsuta	218
Shodon (Chinzei)	66,104,160,163,164,280
Shodon Wan	104,160,161,165
Shokari	162,287
Shomi	232,233
Shuri	9,74,129,137,189,192,194,195,199,200,272
Soatsu	185
Somachi	67,177,178,179,288
Somachi Hakuchi	20,67,177,179
Somachi Kō	288
Sonai	86,88,120,237,238,240,255,256,257
Sonai Saki	86,118,238,240
Sotetsushin Saki	81
Soto-Banare Shima (Soto-Hanare)	86,90,92,119,237,240,300
Sotsuko Saki	160,162,164,280
Sukama	84,253,297
Sukku	20,108
Suko	166
Sukomo Hanare	66,164
Sumiyo Kawa	170
Sumiyoshi Misaki	53
Sumiyo Ura	66,167
Sumiyo Wan	20,67,102,103,160,167



CONFIDENTIAL  
 JAPAN  
 AREA H-1 NANSEI SHOTO

Change #15  
 May 1944

PLACE INDEX  
 (Cont'd)

- S -  
 (Cont'd)

Sumo Saki	53
Sumuji	221
Suno	175,292
Sun Saki	230
Su Saki	62
Sutaru Ura	67,102,167
Suwanose Shima	60,62,64,137,155

- T -

Taerate Shima	221
Taira	77
Taira Shima	60,62,81,137,158
Taisei Yama	82
Takabo	53
Taka Hanare	75,212
Takamotoji	292
Takamoto Saki	61
Takana Saki	86
Takara Shima	60,63,64,132,137,156
Takara Shima Hakuchi	157
Taka Saki	58,149
Taka Shima	53, 63
Taken	66,166
Takena	287
Taken Byochi	166
Take Saki	53
Take Shima	52,55,56,57,137,151,172
Taketomi Shima	87,91,245,247,248
Tako Saki	240
Tamagusuku	189
Tane-ga-Shima	9,20,23,26,52,56,96,124,125,129, 136,137,139-142,271,272,276,285.
Tane-ga-Shima Kaikyo	23,26,52,132
Tangiya	183
Tanowaki Hana	53
Tarama	258
Tarama Shima	30,83,85,137,252,258,273,276
Tategami Shima	70
Tatsugo	67,175
Tei Minato	72,222,290
Tekebu	175
Tekuzuku	177
Tenniya	290
Tete	68
Teyan	287
To Bana	28
Tobira Shima	167
Tobiyo Saki	67
Tobuchi	74
Togeshi	189
Toguchi	67,76,112,160,189,213,214,217,290
Toguchi Ko	213,219,220,282



CONFIDENTIAL  
 JAPAN  
 AREA H-1 NANSEI SHOTO

Change #15  
 May 1944

PLACE INDEX  
 (Cont'd)

- T -  
 (Cont'd)

Tohiyo-saki	288
Tokara Guntō	7,9,26,28,51,60,121,136,154-159,172, 274,275,278,284.
Tokara Kaikyō	26
Tokashiki	227,230
Tokashiki Kō	230
Tokashiki Shima	78,82,132,227,230
Tokujima	296
Toku-no-Saki	62
Toku-no-Shima	11,28,29,65,68,106,122,123,132,136, 162,181-184,271,273,276.
Toma	198,272
Tombara Iwa	175,181
Tomidachi Hana	62
Tomigusuku	189
Tonachi	234
Tonachi Shima	78,132,137,234
Tonaki Shima	29, 30
Tondo	194,208
Tonnawa Yama	82
Tori Shima	11,65,68,72,82,121,188,234
Toshii Saki	55
Toubari Saki	240,300
Towabari Saki	92
Tsuchimori	168
Tsuhaki	74,189
Tsuka Saki	54,46,147
Tsuken Shima	75,189,196,271,276,282,294
Tsuruka Shima	221

- U -

Uchibabu Shima	75
Uchi Hanare (Uchi Banare)	91,237,238,240,271,300
Uehara	238
Uehara Yama	82
Uegusuku	295
Uegusuku Take (Ō Take)	121,223,295
Ue-no-Mori Yama	82
Ufuguchi Saki	221
Uji Shima	58
Ukeamaru Wan	165
Uken	20,170
Uken Kuchi	75
Uken Wan	166
Uke Shima	20,160,161,162,163,164
Uke Shima Suido	28,161,164,165
Unai Saki	117,243
Une	295
Unna	75,290
Unsa	218
Unten	217,220,221,290
Unten Kō	21,76,129,199,213,220,222,282,288,289,290
Uotsuri Shima	85,92,260



CONFIDENTIAL  
 JAPAN  
 AREA H-1 NANSEI SHOTO

Change #15  
 May 1944

PLACE INDEX  
 (Cont'd)

- U -  
 (Cont'd)

Urabaru	72
Urabu Take	92,255
Ura Ko	175
Uramura	175
Ura Saki	54,276
Urata	139,285
Uratani Bama	240,300
Urata Wan	141
Urauchi	238,243
Urauchi Wan (Honai Wan)	86,238,243
Uruchi Saki	86
Ushi Ji	82
Ushiku	160,175

- V -

- W -

Wadomari	20,69,138,185,186
Wakugawa	221
Wan	67,177,178,179
Wan Ko	67,179
Wora Wan	213

- X -

- Y -

Yabu	217,218
Yae-Bi Se	30, 84
Yaeme Saki	86
Yaeyama Rettō	31, 83,131
Yagaji Shima (Yagachi)	76,220,221,282,288,290
Yagama Shima	221
Yagi Shima	169,172,173,279
Yahazu Saki	54,146
Yahazu Yama	56,146
Yaji Shima	221
Yakabi Shima	78,227
Yakena	189
Yakiuchi Wan	66,160,166
Yakuchi Wan	20
Yakuniya Saki	69,185
Yaku Shima	11,16,26,52,54,56,99,121,129,132,136, 137,138,139,143-148,271,273,286.



CONFIDENTIAL  
 JAPAN  
 AREA H-1 NANSEI SHOTŌ

Change #15  
 May 1944

PLACE INDEX  
 (Cont'd)

- Y -  
 (Cont'd)

Yaku Shima Kaikyō	26,52
Yamada	189
Yamagusuku	296
Yamanyuha	218
Yamato Hama	66
Yamato Hama Wan	66,176
Yanagihara	285
Yanaha Shima	76,232,233
Yane Saki	231
Yanma	66,167
Yano Mine	150
Yanoshita Shima	76
Yarabu Saki	248
Yarabu Take	91
Yaraja	81
Yashikubara	297
Yayeme Saki	92
Yemmura	175
Yena	77,222
Yokoate Shima	60,63,64,158,286
Yokomichi Yama	281
Yomura	175
Yonabaru	9,74,110,137,189,191,194,199,276,282,294
Yonabaru Wan	74,189,191,211,282,294
Yonaha	297
Yonaha Dake	213
Yonakuni Shima	21,31,83,88,92,126,127,131,135,137,254-257,276
Yonazone	253
Yoni Saki	300
Yontan (Yomitani)	129,189,190,275,282,291
Yoron Shima	65,69,136,137,188,272
Yoro Shima	66,160,162,163,164
Yoro Shima Suidō	28,66,160,164
Yotsukui	218
Yoza	189
Yu Banare	164
Yui	287
Yui Shima	287
Yuki-no-Saki	81
Yuwan	66,166
Yuwan Take	161
Yuze	57

- Z -

Zachimi	189
Zamami Shima	78,82,272
Zanami	227,228
Zanami Shima	227,228,229
Zanpa Misaki	74,196,290
Zenta	296