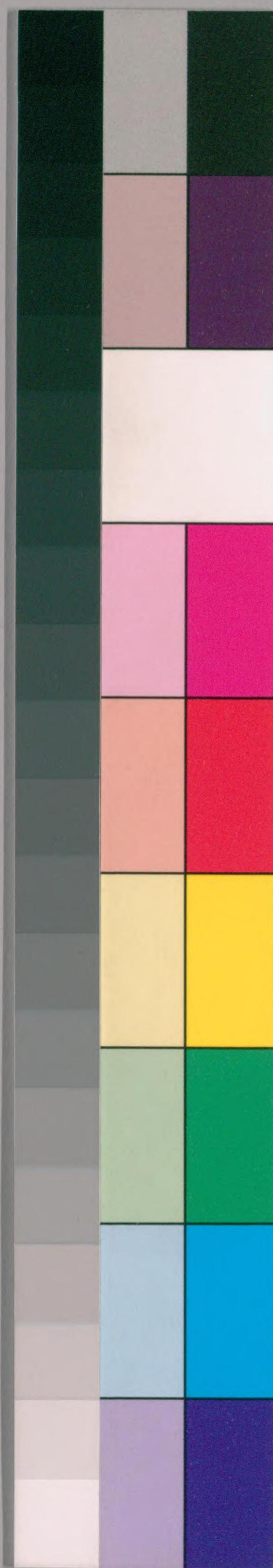


別17
6

説
經

まつら
長
じ
や

寛文元年
山本
校



国立国会図書館 タイトル『まつら長じや』 請求記号 本別17-6

ガラス使用

物取
 此の物取は...
 (The text is written in vertical columns in cursive Japanese calligraphy, starting with '物取' on the right side.)



日最もよく保持せらる

竹生島縁起

人

買

人

人柱伝説

経緯の利益



9410

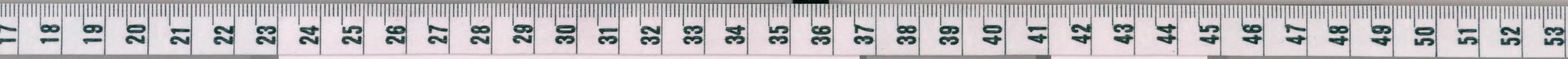
明治十五年十二月十二日一話了 彦丁ナシ

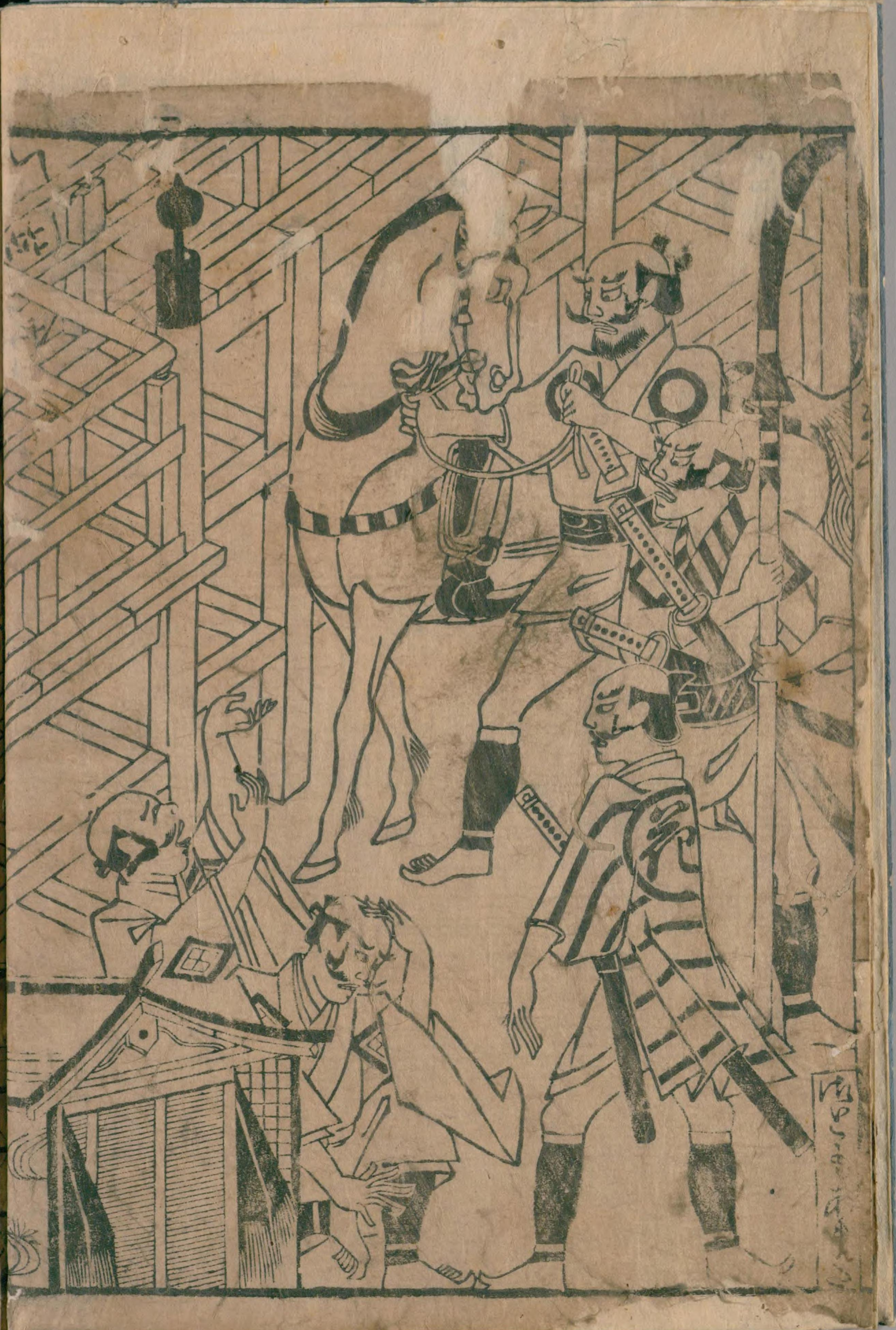
斑山文庫主人



Handwritten text in cursive script on the left page of an open manuscript. The text is densely packed and covers most of the page area.

Handwritten text in cursive script on the right page of an open manuscript. The text is densely packed and covers most of the page area.





Handwritten text in a cursive script, likely a historical document or manuscript. The text is densely packed and covers most of the page area.

Handwritten text in a cursive script, continuing from the previous page. The text is densely packed and covers most of the page area.





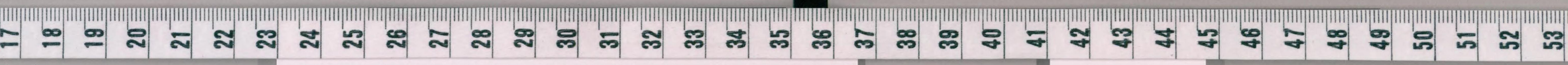
エラウのまへ
めいひんである

おのれはまへ
おのれはまへ



おのれはまへ
おのれはまへ

おのれはまへ
おのれはまへ



Handwritten text in a cursive script, likely a historical document or manuscript. The text is written in a dense, flowing style across multiple lines on both pages. The ink is dark, and the paper shows signs of age and wear.



Handwritten text in a cursive script, likely a historical document or letter, covering the left page of the manuscript.

大正十一年三月廿一日

Handwritten text in a cursive script, continuing the document from the left page, covering the right page of the manuscript.



Handwritten text in a cursive script, likely a historical document or manuscript. The text is densely packed and covers the entire page.

Handwritten text in a cursive script, likely a historical document or manuscript. The text is densely packed and covers the entire page.





まつら長じや



まつら長じや



Handwritten text in a cursive script, likely a historical document or letter. The text is densely packed and covers most of the page.

Handwritten text in a cursive script, continuing from the previous page. It includes a large, stylized signature or seal in the middle of the page.



Handwritten text in Kuzushiji script, covering approximately 17 lines on the left page of the manuscript.

Handwritten text in Kuzushiji script, covering approximately 17 lines on the right page of the manuscript.





Handwritten text in a cursive script, likely a historical document or manuscript. The text is densely packed and covers most of the page area.

Handwritten text in a cursive script, continuing from the previous page. The text is densely packed and covers most of the page area.





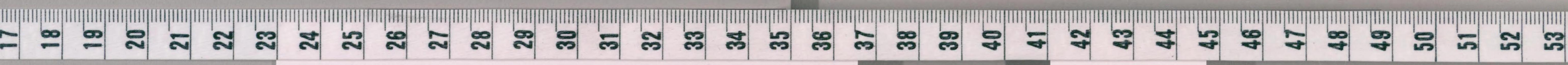
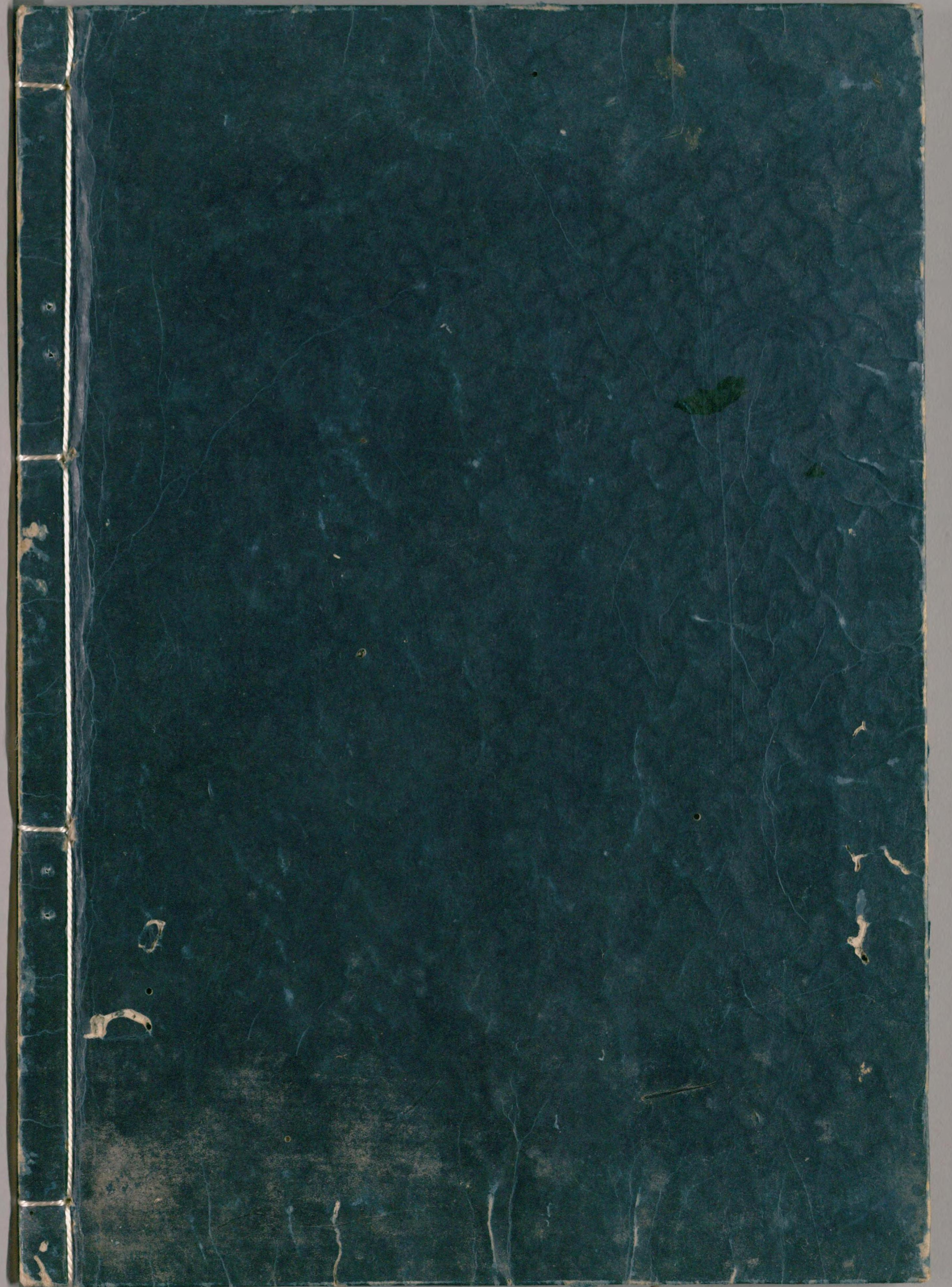
元元年八月廿日

末九書場梅

Handwritten text in cursive script, likely a diary entry or letter, covering the left page of the manuscript.

Handwritten text in cursive script, continuing the entry or letter, covering the right page of the manuscript.





国立国会図書館 タイトル『まつら長じや』 請求記号 本別17-6

ガラス使用