

*Handwritten text in a non-Latin script, possibly Inuktitut, at the top of the page.*

y. 58 - 1. 25.

58



*M. S. no. 101. 1. 25.*  
*The History of Ratoocrahkuk N. B.*



*[Faint, mostly illegible handwriting in a historical script, possibly Latin or Italian, covering the page.]*



Handwritten text in a cursive script, possibly a musical score or a list of names. The text is arranged in several lines, with some words appearing to be repeated or written in a specific pattern. The script is dense and difficult to decipher without a key.

Handwritten text in a cursive script, continuing from the previous block. The text is arranged in several lines, with some words appearing to be repeated or written in a specific pattern. The script is dense and difficult to decipher without a key.

Handwritten text in a cursive script, likely a form of Hebrew or Yiddish, covering the majority of the page. The text is arranged in approximately 12 horizontal lines. The script is dense and features many ligatures and decorative flourishes. Some words are written in larger, bolder characters, possibly indicating emphasis or specific terms. The overall appearance is that of a historical manuscript or a collection of notes.

Handwritten text in a cursive script, likely a form of Hebrew or Yiddish, arranged in approximately 15 horizontal lines. The text is densely packed and includes several large, decorative initial letters (possibly 'א', 'ב', 'ג', 'ד', 'ה') that serve as section markers. The script is written in dark ink on aged, slightly yellowed paper. The lines of text are roughly parallel to each other, though some words are written on a diagonal or slanted. The overall appearance is that of a historical manuscript or a collection of notes.

Fragmentary handwritten text visible on the right edge of the page, continuing from the adjacent page. It shows the right-hand side of several lines of the same cursive script, with some words partially cut off by the edge of the image.



Handwritten text in a cursive script, likely a historical document or manuscript. The text is written in a dark ink on aged, yellowish paper. It consists of approximately 15 lines of text, with some lines being significantly longer than others. The script is dense and difficult to decipher without specialized knowledge of the language. There are several large, decorative initials or flourishes interspersed throughout the text. At the bottom of the page, there is a small signature or mark that appears to be a cross followed by some illegible characters.

Vertical text written along the right edge of the page, possibly a marginal note or a continuation of the main text. It is written in the same cursive script as the main body of text.

Vertical text written along the right edge of the adjacent page, continuing the manuscript's content. The script is consistent with the page on the left.



Handwritten text in a cursive script, likely a form of Hebrew or a related Semitic language. The text is arranged in approximately 15 horizontal lines across the page. The script is dense and highly stylized, with many characters that are difficult to decipher without specialized knowledge. There are several large, decorative initial letters or symbols at the beginning of lines, possibly indicating the start of a new section or a specific type of text. The paper shows signs of age, including some staining and discoloration.

Handwritten text in a cursive script, likely a medieval manuscript. The text is arranged in approximately 12 horizontal lines across the page. The script is dense and features many loops and flourishes. The ink is dark, and the paper shows signs of age, including some staining and discoloration. The text appears to be a form of Latin or a related medieval language, possibly a liturgical or legal document. The lines are roughly parallel, with some variations in spacing and alignment. The overall appearance is that of a well-used, historical document.

Handwritten text in a cursive script, likely a religious or legal document. The text is dense and fills the upper portion of the page.

Handwritten text in a cursive script, continuing from the previous section. The script is highly stylized and difficult to decipher.

Handwritten text in a cursive script, continuing the document's content. The lines are closely spaced.

Handwritten text in a cursive script, continuing the document's content. The script remains consistent throughout.

Handwritten text in a cursive script, continuing the document's content. The text is contained within a faint rectangular border.

Handwritten text in a cursive script, continuing the document's content. The text is contained within a faint rectangular border.

Handwritten text in a cursive script, continuing the document's content. The text is contained within a faint rectangular border.

Handwritten text at the top left of the page.

Main body of handwritten text, consisting of approximately 15 lines of dense script with various annotations and symbols.

Partial view of handwritten text from the adjacent page on the right.



†

Handwritten text at the top of the page, including a page number '76' on the right.

Main body of handwritten text in the upper section, featuring various characters and symbols.

Main body of handwritten text in the lower section, continuing the script.

Handwritten text at the bottom left of the page.

Handwritten number '7' at the bottom center of the page.

†

Handwritten header text at the top of the page, including the number 70 and various symbols.

Main body of handwritten text in a cursive script, consisting of approximately 12 lines of dense, flowing characters.

Handwritten text block at the bottom left of the page.

Handwritten text block at the bottom right of the page.

†

Handwritten text at the top of the page, possibly a title or header, written in a cursive script.

Vertical handwritten text along the left margin, including some numbers and symbols.

7-4

Handwritten text at the bottom left, including a signature and some numbers.

Handwritten text at the bottom right, possibly a date or reference.

7



†

Handwritten header text in a cursive script, possibly containing a title or reference.

Handwritten text in a cursive script, consisting of approximately 15 lines. The text is densely packed and includes several large, decorative initial letters (possibly 'A', 'B', 'C') that mark the beginning of new sections or paragraphs. The script is highly stylized and characteristic of historical manuscript writing.

Handwritten text at the bottom left of the page, possibly a signature or a note.

Handwritten text in a cursive script, likely a form of Hebrew or Arabic, with various symbols and flourishes. The text is arranged in approximately 12 horizontal lines. The script is dense and includes many decorative elements such as loops and flourishes. There are several large, stylized symbols that appear to be initials or section markers, possibly 'א' (Aleph) or 'ב' (Beth). The text is written on aged, slightly yellowed paper.

Vertical handwritten text on the right margin, possibly a library or collection stamp. The text is partially obscured and difficult to read, but appears to contain several lines of information.

Small handwritten text at the bottom right corner of the page, possibly a date or a signature.



Handwritten text in a cursive script, likely a religious or legal document, spanning the top of the page.

Handwritten text in a cursive script, located below the first line of text.

70

Handwritten text in a cursive script, occupying the lower half of the page. The text is dense and appears to be a continuation of the document's content.

8





Handwritten text in a medieval script, likely a musical score or liturgical text, featuring large, decorative initials and rhythmic notation.

The text is written in a dark ink on aged, yellowed paper. It consists of approximately 15 lines of text. Each line begins with a large, ornate initial letter, often in a different color or with elaborate flourishes. Between these initials, there is smaller, more densely packed text, which appears to be the main body of the document. The script is a form of medieval Gothic or similar cursive, with distinct ligatures and a rhythmic structure. Some parts of the text are written in a slightly larger or more formal hand, possibly indicating specific sections or important words.

The overall appearance is that of a well-used manuscript, possibly a choirbook or a book of hours, given the musical notation and the decorative elements. The paper shows signs of age, including discoloration and some wear at the edges.

Handwritten text in a cursive script, likely a form of shorthand or a specific dialect. The text is arranged in approximately 15 horizontal lines across the page. The characters are dense and interconnected, with some larger, more prominent letters that may serve as markers or initials. The ink is dark, and the paper shows signs of age and wear.



Handwritten marginal notes on the right side of the page.

Main body of handwritten text in a cursive script, featuring several large, decorative initial letters and some underlined sections.

Handwritten text visible in the left margin of the page.

Handwritten musical notation in a medieval script, likely a form of square notation. The text is arranged in approximately 12 horizontal lines. Each line consists of a series of rhythmic symbols (vertical stems with flags) and square neumes. The notation is dense and fills most of the page. The script is a Gothic or similar medieval hand, with some characters appearing to be ligatures or specific rhythmic values. The overall appearance is that of a manuscript page from a medieval music book or a liturgical book.

Vertical marginal notes written in a smaller, cursive script, likely a later hand or a different dialect. The text is difficult to decipher but appears to be commentary or a secondary text related to the main musical notation. It runs down the right edge of the page, starting from the middle and ending near the bottom.

Partial view of the adjacent page on the right, showing the continuation of the musical notation and script. The notation is similar to the main page, with square neumes and rhythmic symbols. The script is also a medieval hand, consistent with the main page.



Handwritten text in a cursive script, likely a medieval manuscript. The text is arranged in approximately 12 horizontal lines. It features a mix of lowercase and uppercase letters, with some characters appearing to be ligatures or specific dialectal forms. The ink is dark, and the paper shows signs of age and wear, including some staining and fading. The script is dense and fills most of the page.

Small handwritten notes or a signature at the bottom right corner of the page.

Fragmentary handwritten text visible on the adjacent page to the right, showing the continuation of the script.

Handwritten text in a cursive script, likely a form of shorthand or a specific dialect. The text is arranged in approximately 12 horizontal lines across the page. The characters are dense and interconnected, typical of shorthand systems. Some lines begin with large, decorative initial letters. The overall appearance is that of a manuscript or a set of notes.

Vertical handwritten text on the right margin, written in a similar cursive script. It appears to be a commentary or a list of notes related to the main text on the page.

Handwritten text at the bottom of the page, possibly a signature, a date, or a concluding note. It includes some larger, more distinct characters and symbols.

Handwritten text at the top of the page, possibly a header or title, written in a cursive script.

Main body of handwritten text, consisting of approximately 15 lines of dense, cursive script. The text appears to be a religious or philosophical treatise, possibly a prayer or a commentary on a biblical passage.

Handwritten text at the bottom of the page, likely a signature or a date, including a large initial 'X'.

Vertical handwritten text along the right margin, likely a commentary or a secondary text related to the main content.

Handwritten musical notation in a medieval script, likely Hebrew or Arabic. The notation consists of several lines of text with rhythmic symbols (vertical lines and dots) interspersed, characteristic of medieval manuscripts. The script is dense and fills most of the page.

Vertical marginal notes written in a medieval script, possibly Hebrew or Arabic, running down the right side of the page. These notes appear to be commentary or additional instructions related to the main text.

Handwritten text at the top of the page, possibly a title or header.

Main body of handwritten text, consisting of several lines of dense script.

Second section of handwritten text, appearing as a distinct paragraph.

Third section of handwritten text, continuing the main body.

Fourth section of handwritten text, showing further development of the script.

Fifth section of handwritten text, located in the lower middle part of the page.

Sixth section of handwritten text, near the bottom of the page.

Vertical handwritten text on the left margin, possibly a reference or note.

Vertical handwritten text on the right margin, possibly a reference or note.

Handwritten text on the adjacent page, visible on the right edge of the image.



Handwritten text in a cursive script, likely a form of shorthand or a specific dialect. The text is arranged in approximately 12 horizontal lines across the page. The characters are dense and interconnected, with some larger, more prominent symbols that may serve as markers or initials. The overall appearance is that of a highly stylized and compact form of writing.

Vertical handwritten text on the right margin, written in the same cursive script as the main body of the page. It appears to be a commentary or a key for the shorthand used in the main text. The text is oriented vertically, running from top to bottom along the right edge of the page.

Handwritten header text at the top of the page, possibly a title or reference number.

Main body of handwritten text in a cursive script, consisting of approximately 15 lines of dense, flowing characters.

Partial view of handwritten text from the adjacent page on the right, showing the continuation of the script.

Handwritten text in a cursive script, likely a Hebrew manuscript, with various lines of writing and some large, decorative initials or symbols. The text is densely packed and fills most of the page. There are several large, stylized characters that appear to be initials or specific markers within the text. The ink is dark and the paper shows signs of age and wear.

Handwritten text in a cursive script, likely a medieval manuscript. The text is arranged in approximately 15 horizontal lines across the page. The script is dense and characteristic of the late Gothic or early modern period. The ink is dark, and the parchment shows signs of age and wear. The text appears to be a continuous passage, possibly a letter or a section of a larger work. The lines are roughly parallel, with some variations in spacing and alignment. The overall appearance is that of a well-preserved but aged historical document.



Handwritten text in a cursive script, likely a medieval manuscript. The text is arranged in approximately 15 horizontal lines. The script is dense and features many ligatures and flourishes. The ink is dark, and the paper shows signs of age, including some staining and discoloration. The text appears to be a form of Latin or a related Romance language, possibly a liturgical or legal document. The lines are roughly parallel, with some variations in spacing and alignment. The overall appearance is that of a well-used, historical document.

Handwritten text in a cursive script, likely a form of shorthand or a specific dialect of a language. The text is arranged in approximately 12 horizontal lines across the page. The characters are dense and stylized, with many loops and flourishes. The ink is dark and the paper shows signs of age with some yellowing and faint smudges.

Handwritten text in a cursive script, likely a form of shorthand or a specific dialect. The text is arranged in approximately 15 horizontal lines across the page. The characters are dense and interconnected, with some larger, more prominent symbols that may serve as markers or initials. The ink is dark, and the paper shows signs of age and wear.





Handwritten text in a cursive script, likely a form of Hebrew or Yiddish, covering the page. The text is arranged in approximately 12 horizontal lines. The script is dense and features many ligatures and flourishes. The paper shows signs of age, including some staining and wear at the edges. The text appears to be a continuous passage, possibly a religious or legal document, given the context of the adjacent page which contains more legible text.

אהיה לך אלהים ואתה תהיה לי אלהים  
 ואתה תהיה לי אלהים ואתה תהיה לי אלהים  
 ואתה תהיה לי אלהים ואתה תהיה לי אלהים  
 ואתה תהיה לי אלהים ואתה תהיה לי אלהים

אהיה לך אלהים  
 ואתה תהיה לי אלהים

אהיה לך אלהים ואתה תהיה לי אלהים  
 ואתה תהיה לי אלהים ואתה תהיה לי אלהים  
 ואתה תהיה לי אלהים ואתה תהיה לי אלהים  
 ואתה תהיה לי אלהים ואתה תהיה לי אלהים  
 ואתה תהיה לי אלהים ואתה תהיה לי אלהים

אהיה לך אלהים ואתה תהיה לי אלהים  
 ואתה תהיה לי אלהים ואתה תהיה לי אלהים  
 ואתה תהיה לי אלהים ואתה תהיה לי אלהים  
 ואתה תהיה לי אלהים ואתה תהיה לי אלהים  
 ואתה תהיה לי אלהים ואתה תהיה לי אלהים

אלהינו ואלהינו ואלהינו ואלהינו ואלהינו  
 ואלהינו ואלהינו ואלהינו ואלהינו ואלהינו  
 ואלהינו ואלהינו ואלהינו ואלהינו ואלהינו

הוה מהו הוה מהו הוה מהו  
 הוה מהו הוה מהו הוה מהו

~

7-11

ואלהינו ואלהינו ואלהינו ואלהינו ואלהינו  
 ואלהינו ואלהינו ואלהינו ואלהינו ואלהינו  
 ואלהינו ואלהינו ואלהינו ואלהינו ואלהינו  
 ואלהינו ואלהינו ואלהינו ואלהינו ואלהינו  
 ואלהינו ואלהינו ואלהינו ואלהינו ואלהינו  
 ואלהינו ואלהינו ואלהינו ואלהינו ואלהינו  
 ואלהינו ואלהינו ואלהינו ואלהינו ואלהינו  
 ואלהינו ואלהינו ואלהינו ואלהינו ואלהינו

...  
 ...  
 ...  
 ...  
 ...  
 ...  
 ...  
 ...  
 ...  
 ...  
 ...  
 ...  
 ...  
 ...  
 ...  
 ...  
 ...  
 ...  
 ...  
 ...  
 ...  
 ...  
 ...  
 ...

Handwritten marginal notes in a cursive script, likely a shorthand or cipher, running vertically down the left side of the page. The notes include various symbols and characters, some resembling letters and others resembling numbers or specific signs.

Main body of handwritten text in a cursive script, arranged in approximately 12 horizontal lines. The text is dense and appears to be a form of shorthand or a highly abbreviated form of a language. It features a mix of letters, numbers, and symbols, with some characters being larger or more prominent than others. The overall appearance is that of a complex, possibly secret, communication system.

Partial view of handwritten text from the adjacent page on the right, showing the right edge of the page and the beginning of several lines of cursive script.



Handwritten text in a medieval script, possibly a liturgical book or manuscript. The text is arranged in approximately 12 horizontal lines. Each line begins with a large, decorative initial letter, likely a vowel or a significant word, written in a stylized, calligraphic hand. The script is dense and fills most of the page. The text is enclosed within a faint, hand-drawn rectangular border. The paper shows signs of age, including some staining and discoloration, particularly towards the bottom and right edges. The overall appearance is that of a well-used, historical document.

Fragment of handwritten text visible on the right edge of the page, continuing from the adjacent page. It shows the right-hand side of several lines of the same medieval script, with some large initials visible.



Handwritten text in a cursive script, possibly a form of shorthand or a specific dialect. The text is arranged in several lines, with some words appearing to be repeated or written in a stylized, interconnected manner. The script is dense and difficult to decipher without a key.

Handwritten text, possibly a page number or a section marker, located at the top of the right-hand page.

Handwritten text on the right-hand page, continuing the script from the left page. It appears to be a list or a series of entries, possibly related to the shorthand system.



Handwritten text at the top of the page, possibly a title or header, enclosed in a decorative border.

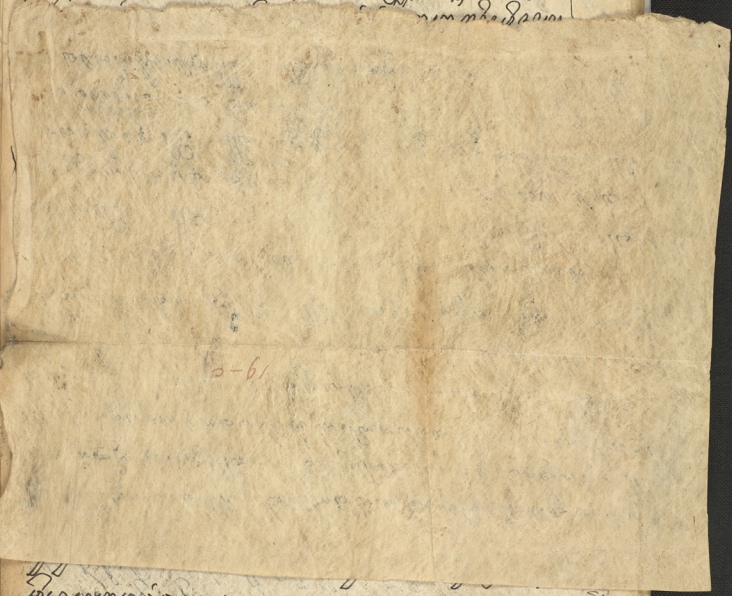
+

Main body of handwritten text, consisting of several lines of script. The text is dense and appears to be a form of shorthand or a specific dialect. There are several instances of the character 'X' or 'XX' interspersed within the lines.

XX

Handwritten text at the bottom of the page, continuing the script from the main body.

Handwritten text in a cursive script, possibly a list or index, located at the top of the page.



2-61

Handwritten text in a cursive script, located at the bottom of the page, partially obscured by the paper overlay.



Handwritten marginal notes in a cursive script, likely a later hand than the main text, running vertically down the left side of the page.

Main body of handwritten text in a cursive script, consisting of approximately 15 lines of dense, flowing characters.

A line of handwritten text at the bottom of the page, possibly a signature or a concluding note, written in a different hand or style than the main text.

Partial view of the adjacent page on the right, showing the continuation of the handwritten text in the same cursive script.

# The first part of the book is written in a very old hand...

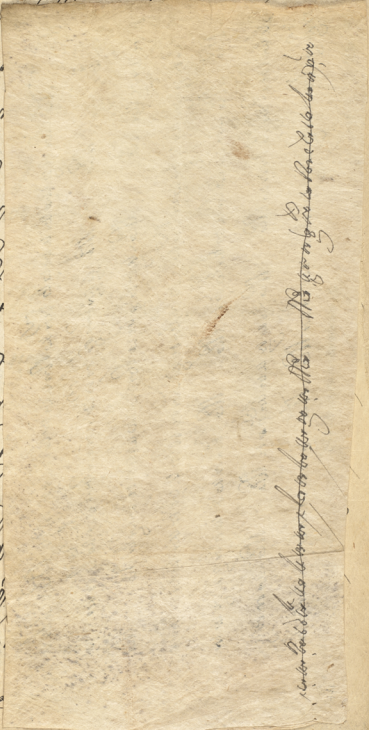
Handwritten text in a cursive script, likely a medieval manuscript. The text is dense and fills most of the left page.

Handwritten text in a cursive script, likely a medieval manuscript. This section appears to be a list or a series of entries, possibly related to the text on the left page.

The second part of the book is written in a very old hand...

##

Handwritten text at the top of the page, including a large initial letter 'M'.



Main body of handwritten text on the left side of the page, written in a cursive script.

Vertical handwritten text on the right side of the page, possibly a marginal note or a list.



Handwritten text at the top of the page, possibly a title or header.

Main body of handwritten text in a cursive script, consisting of approximately 15 lines.

Vertical handwritten text on the right margin, likely a commentary or index.

Handwritten text at the bottom of the page, possibly a signature or a concluding note.

Handwritten text in a cursive script, likely a medieval manuscript. The text is arranged in approximately 15 horizontal lines. The script is dense and characteristic of the late Gothic or early modern period. There are several large, decorative initial letters at the beginning of lines, possibly marking the start of new sections or paragraphs. The ink is dark, and the parchment shows signs of age, including some staining and discoloration. The text is written in a single column on the left page of an open book.

10  
11  
12  
13  
14  
15  
16  
17  
18  
19  
20  
21  
22  
23  
24  
25  
26  
27  
28  
29  
30  
31  
32  
33  
34  
35  
36  
37  
38  
39  
40  
41  
42  
43  
44  
45  
46  
47  
48  
49  
50  
51  
52  
53  
54  
55  
56  
57  
58  
59  
60  
61  
62  
63  
64  
65  
66  
67  
68  
69  
70  
71  
72  
73  
74  
75  
76  
77  
78  
79  
80  
81  
82  
83  
84  
85  
86  
87  
88  
89  
90  
91  
92  
93  
94  
95  
96  
97  
98  
99  
100

Fragment of handwritten text visible on the right page of the manuscript, showing the continuation of the script from the adjacent page.

אחרי כן יבנה בית המקדש ויהיה

במקום הזה ויהיה בית המקדש

במקום הזה ויהיה בית המקדש

במקום הזה ויהיה בית המקדש

במקום הזה ויהיה בית המקדש

במקום הזה ויהיה בית המקדש

במקום הזה ויהיה בית המקדש

במקום הזה ויהיה בית המקדש

במקום הזה ויהיה בית המקדש

במקום הזה ויהיה בית המקדש

במקום הזה ויהיה בית המקדש

במקום הזה ויהיה בית המקדש



Handwritten text at the top of the page, possibly a title or header, written in a cursive script.

Main body of handwritten text in a cursive script, consisting of approximately 15 lines. The text is densely packed and appears to be a continuous passage.

Handwritten text at the bottom of the page, possibly a signature or a concluding note, written in a cursive script.

Handwritten text in a cursive script, likely a religious or historical document, spanning the top of the page.

Main body of handwritten text in a cursive script, consisting of several lines of dense writing.

22 b

Handwritten text at the bottom of the page, possibly a continuation or a separate section.

Small handwritten mark or symbol at the bottom center of the page.

אשר נתתי להם כי פתחתי את הים ונחתו  
המים כי פתחתי את הים ונחתו  
אשר נתתי להם כי פתחתי את הים ונחתו  
המים כי פתחתי את הים ונחתו  
אשר נתתי להם כי פתחתי את הים ונחתו  
המים כי פתחתי את הים ונחתו  
אשר נתתי להם כי פתחתי את הים ונחתו  
המים כי פתחתי את הים ונחתו  
אשר נתתי להם כי פתחתי את הים ונחתו  
המים כי פתחתי את הים ונחתו

Handwritten text in a cursive script, likely a form of shorthand or a specific dialect. The text is arranged in approximately 12 horizontal lines across the page. The characters are dense and interconnected, with some larger, more prominent letters that may serve as markers or initials. The ink is dark, and the paper shows signs of age and wear.

Vertical text on the right margin, possibly a reference or a note.



Die erste...  
~~Die zweite...~~  
~~Die dritte...~~  
 Die vierte...  
 Die fünfte...  
 Die sechste...  
 Die siebente...  
 Die achte...  
 Die neunte...  
 Die zehnte...  
 Die elfte...  
 Die zwölfte...  
 Die dreizehnte...  
 Die vierzehnte...  
 Die fünfzehnte...  
 Die sechzehnte...  
 Die siebenzehnte...  
 Die achtzehnte...  
 Die neunzehnte...  
 Die zwanzigste...

Handwritten text in a cursive script, likely a form of Hebrew or Arabic, covering the majority of the page. The text is arranged in approximately 15 horizontal lines. The script is dense and features many ligatures and flourishes. There are several large, decorative initial letters at the beginning of lines, possibly marking the start of new sections or paragraphs. The ink is dark, and the paper shows signs of age, including some staining and discoloration. The text is written in a right-to-left direction, consistent with the orientation of the page.

Partial view of handwritten text from the adjacent page on the right, showing the right edge of the script.

וְהָיָה כִּי יִשְׁמַע ה' אֶת צְעָדֶיךָ וְהָיָה  
 ה' מִבְּרֵיתֶךָ וְהָיָה ה' מִבְּרֵיתֶךָ  
 וְהָיָה ה' מִבְּרֵיתֶךָ וְהָיָה ה' מִבְּרֵיתֶךָ  
 וְהָיָה ה' מִבְּרֵיתֶךָ וְהָיָה ה' מִבְּרֵיתֶךָ  
 וְהָיָה ה' מִבְּרֵיתֶךָ וְהָיָה ה' מִבְּרֵיתֶךָ  
 וְהָיָה ה' מִבְּרֵיתֶךָ וְהָיָה ה' מִבְּרֵיתֶךָ

וְהָיָה כִּי יִשְׁמַע ה' אֶת צְעָדֶיךָ וְהָיָה  
 ה' מִבְּרֵיתֶךָ וְהָיָה ה' מִבְּרֵיתֶךָ  
 וְהָיָה ה' מִבְּרֵיתֶךָ וְהָיָה ה' מִבְּרֵיתֶךָ  
 וְהָיָה ה' מִבְּרֵיתֶךָ וְהָיָה ה' מִבְּרֵיתֶךָ  
 וְהָיָה ה' מִבְּרֵיתֶךָ וְהָיָה ה' מִבְּרֵיתֶךָ  
 וְהָיָה ה' מִבְּרֵיתֶךָ וְהָיָה ה' מִבְּרֵיתֶךָ  
 וְהָיָה ה' מִבְּרֵיתֶךָ וְהָיָה ה' מִבְּרֵיתֶךָ  
 וְהָיָה ה' מִבְּרֵיתֶךָ וְהָיָה ה' מִבְּרֵיתֶךָ  
 וְהָיָה ה' מִבְּרֵיתֶךָ וְהָיָה ה' מִבְּרֵיתֶךָ  
 וְהָיָה ה' מִבְּרֵיתֶךָ וְהָיָה ה' מִבְּרֵיתֶךָ  
 וְהָיָה ה' מִבְּרֵיתֶךָ וְהָיָה ה' מִבְּרֵיתֶךָ  
 וְהָיָה ה' מִבְּרֵיתֶךָ וְהָיָה ה' מִבְּרֵיתֶךָ  
 וְהָיָה ה' מִבְּרֵיתֶךָ וְהָיָה ה' מִבְּרֵיתֶךָ

Handwritten text in a cursive script, likely a form of shorthand or a specific dialect. The text is arranged in approximately 15 horizontal lines across the page. The characters are dense and interconnected, with some larger, more prominent symbols that may serve as markers or initials. The ink is dark, and the paper shows signs of age and wear.

Handwritten text in a cursive script, likely Hebrew or Arabic, with various flourishes and ligatures.



Faint, illegible text, possibly bleed-through from the reverse side of the page.



JAV . MSS . 63

Mark  
b.  
58.

Oriental Mss

JAVANESE

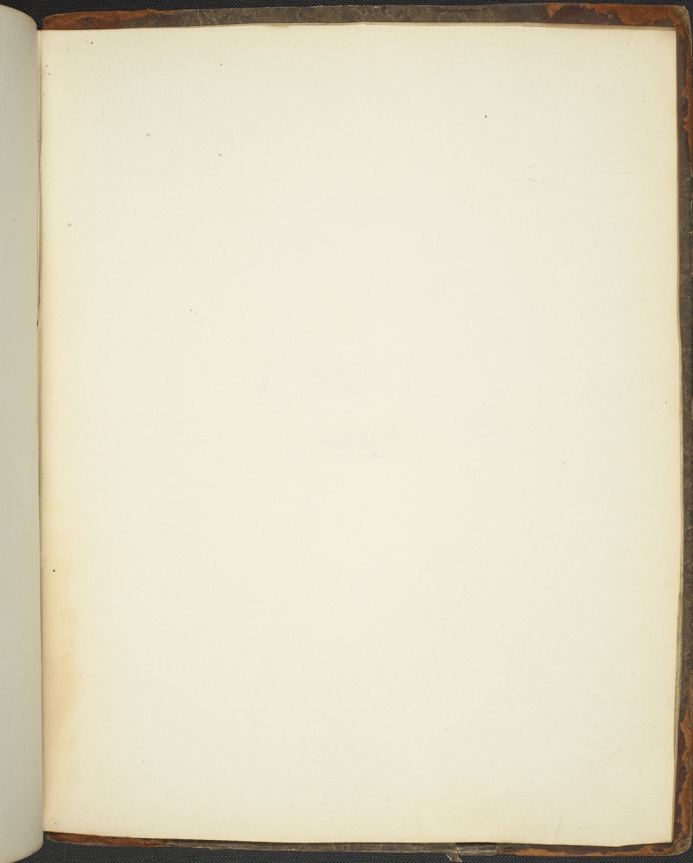
63

INDIA OFFICE  
LIBRARY

3447

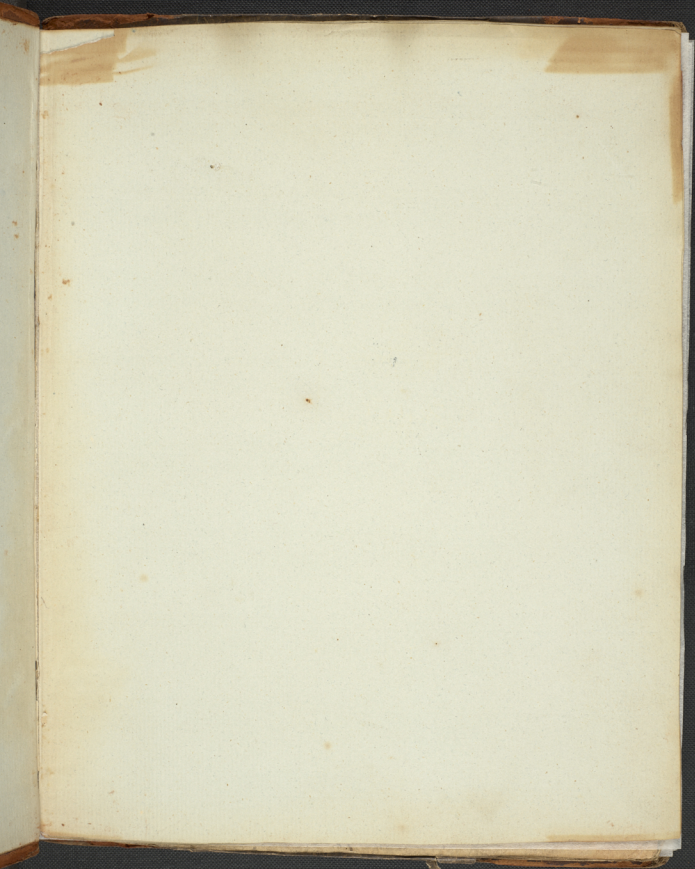
MICROFILM

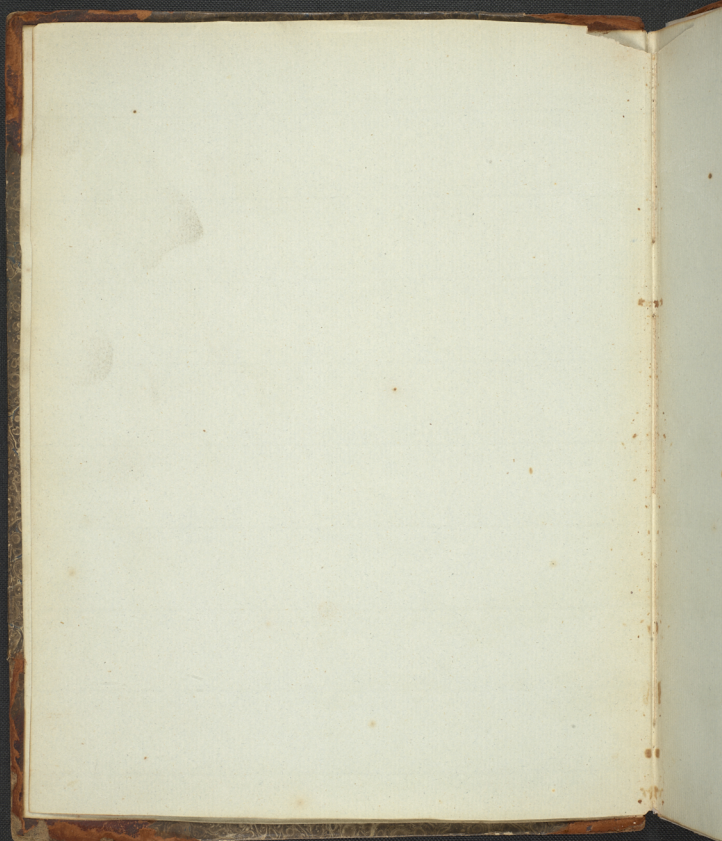


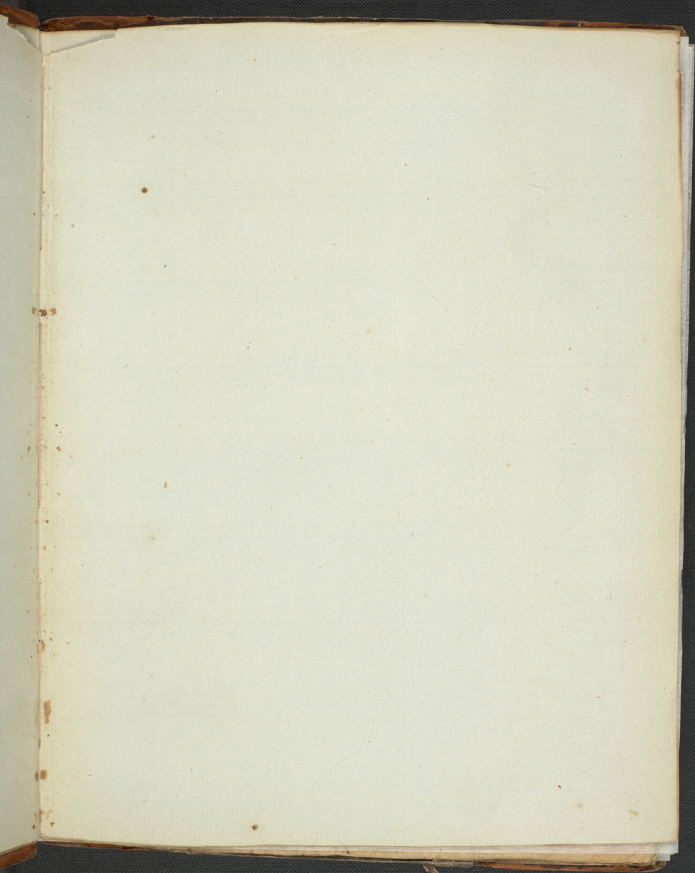


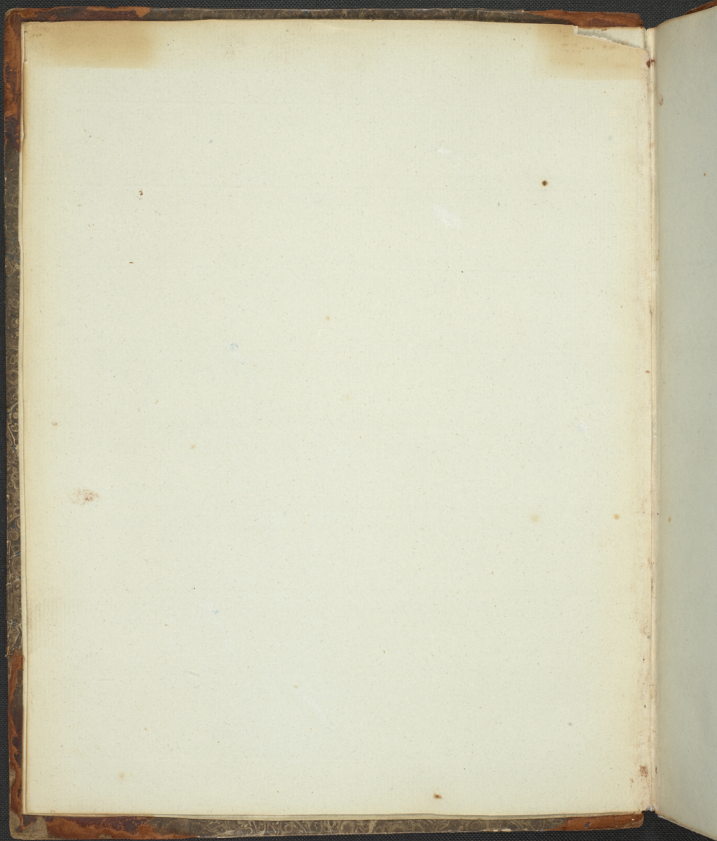


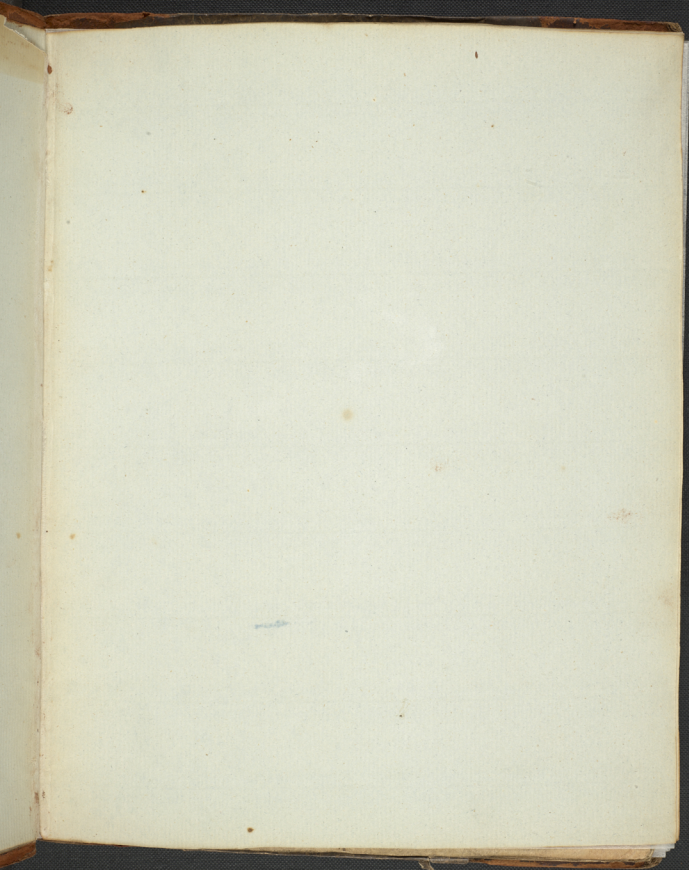




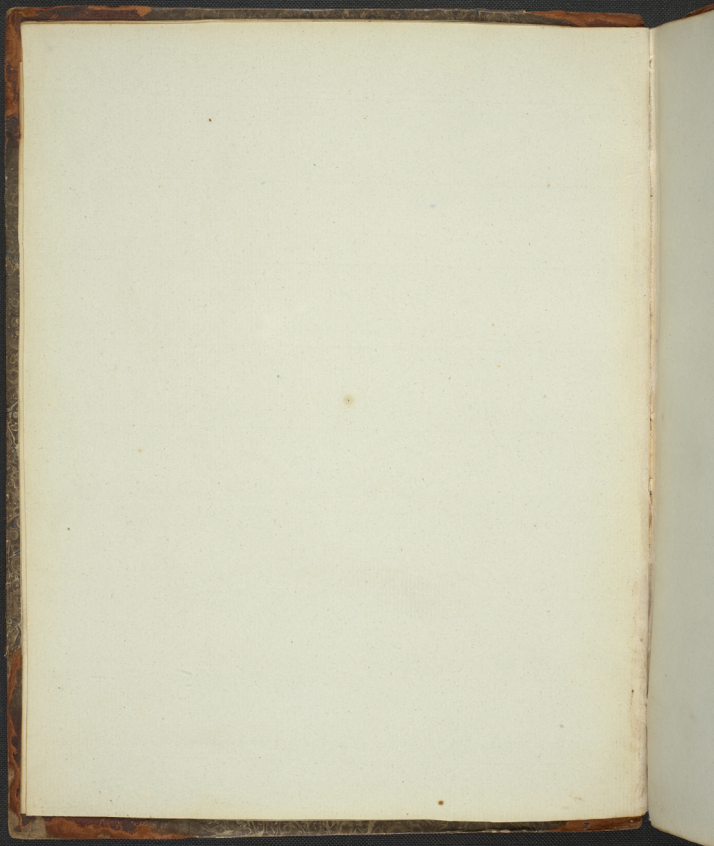


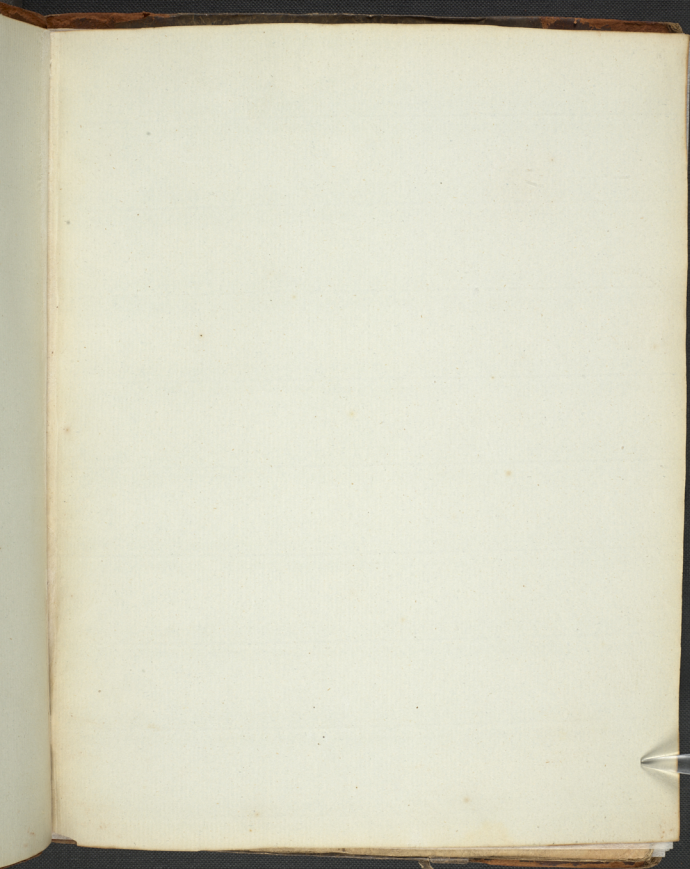




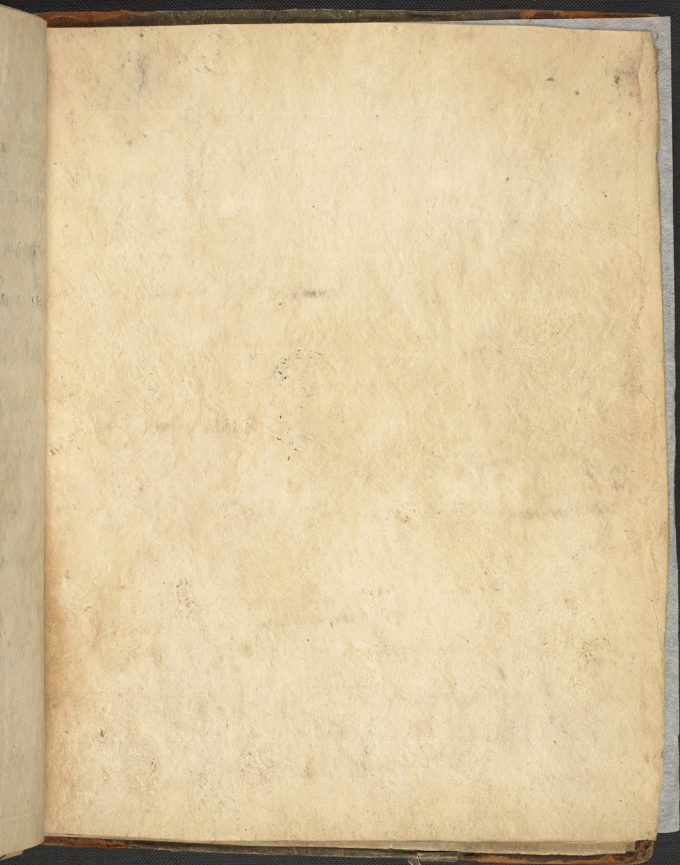


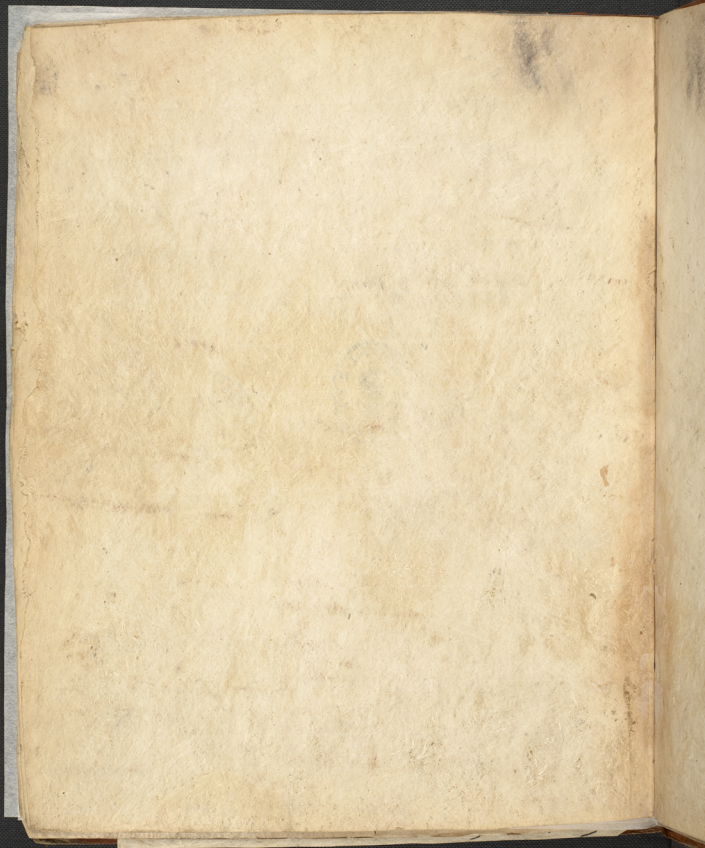


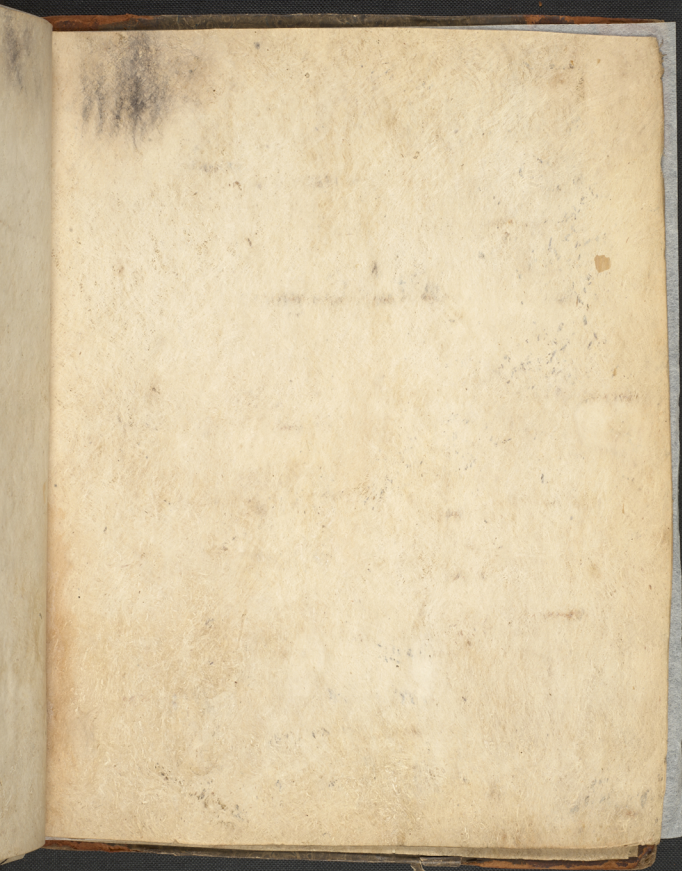


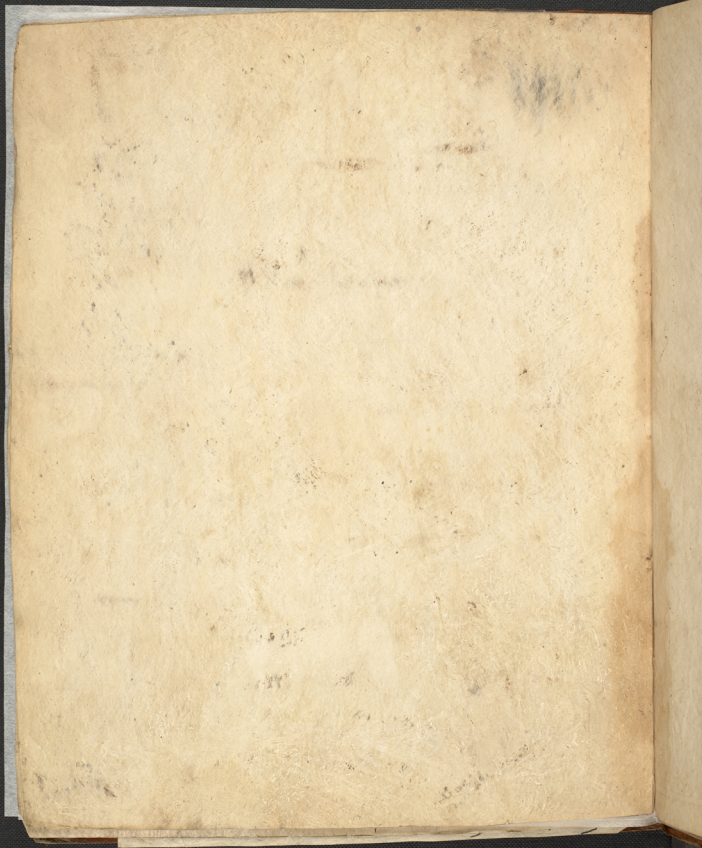


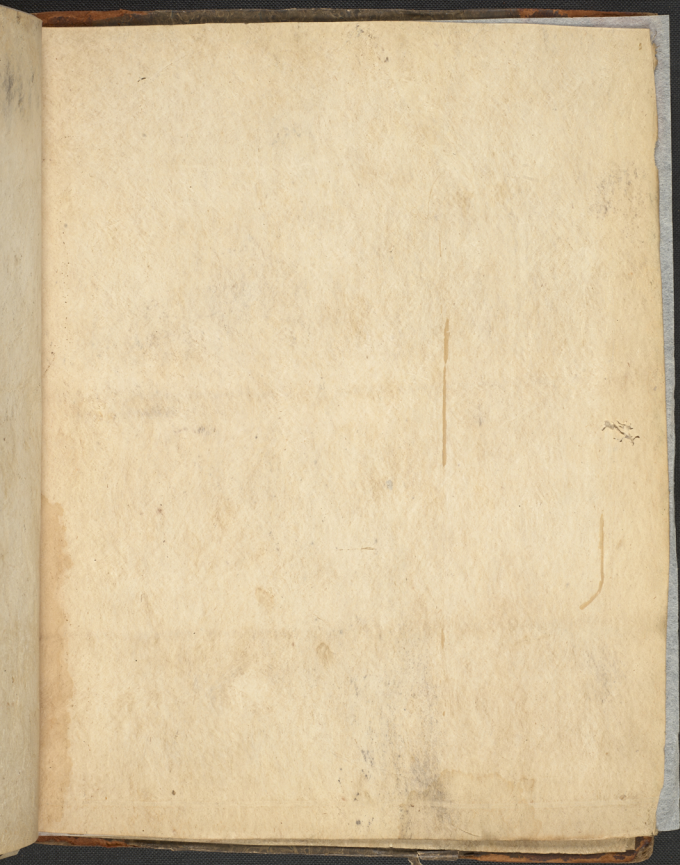
80



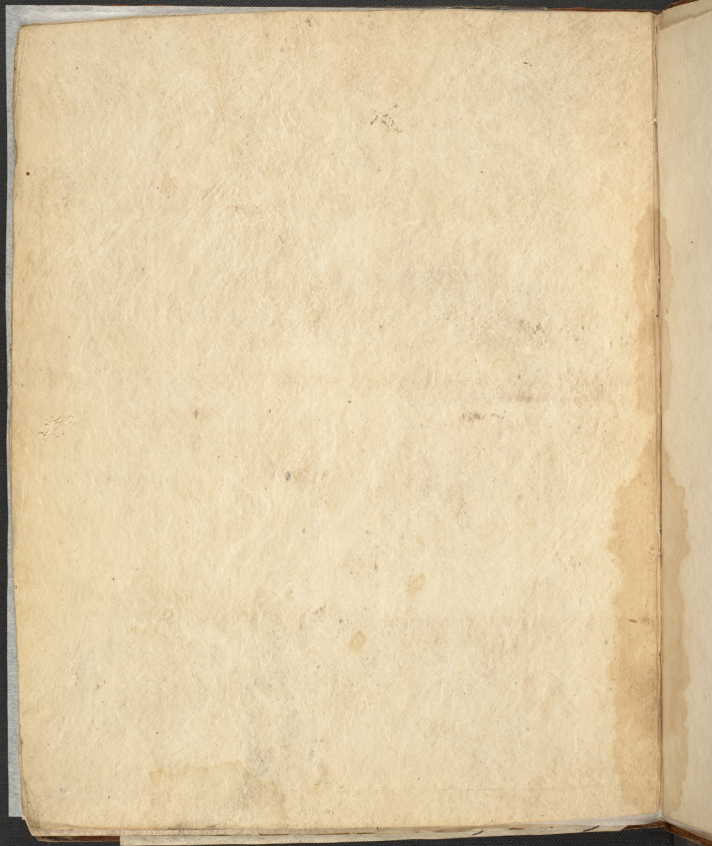




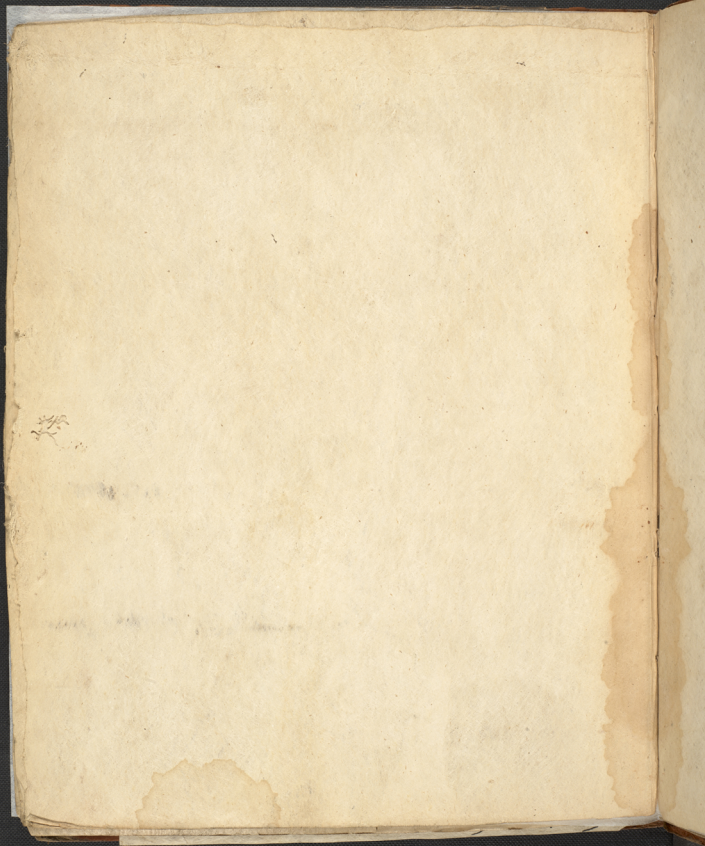


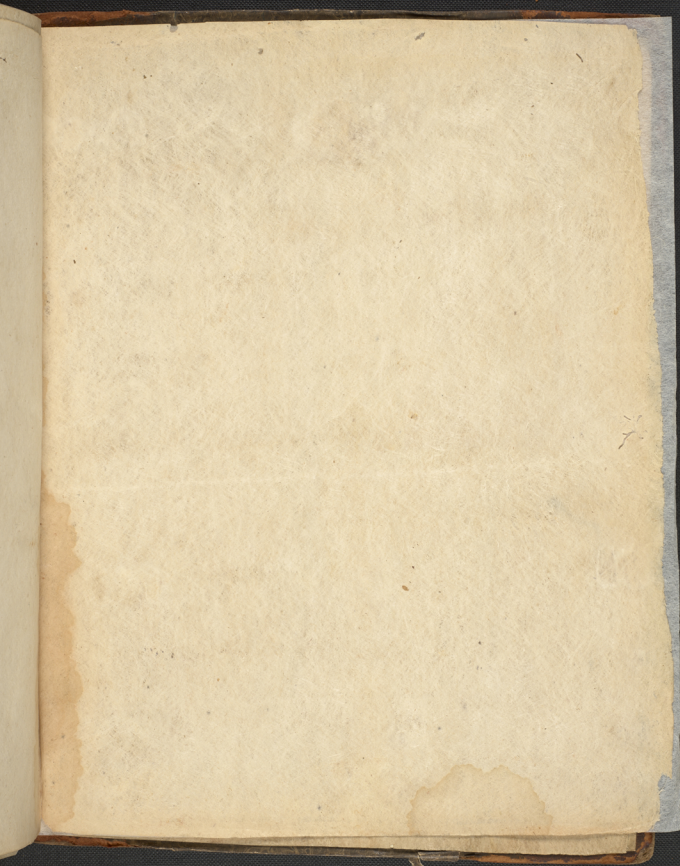


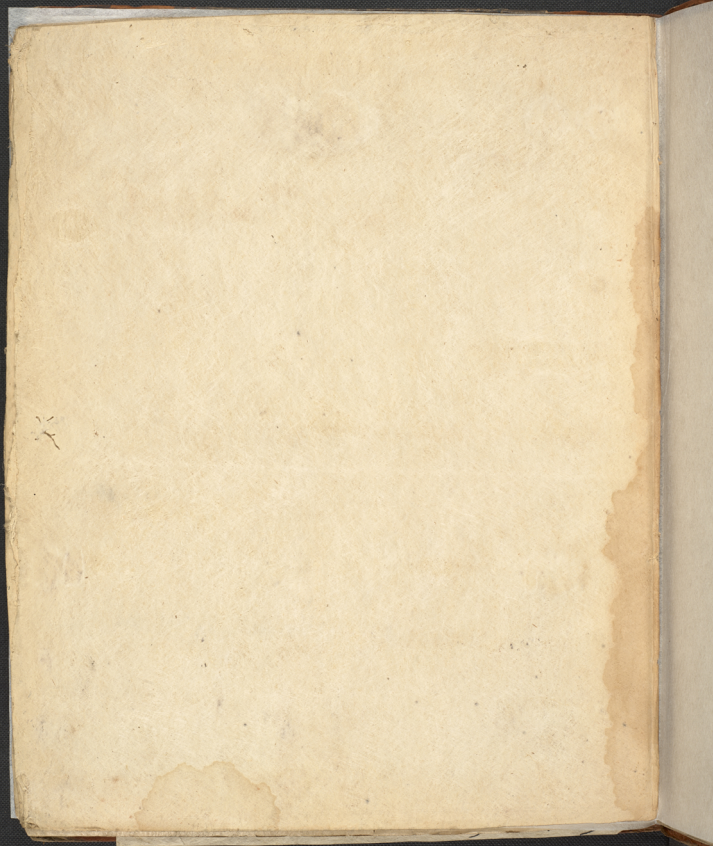




後









111

