

Kodak Gray Scale



© Kodak, 2007 TM: Kodak

A 1 2 3 4 5 6 M 8 9 10 11 12 13 14 15 B 17 18 19



Kodak Color Control Patches

© Kodak, 2007 TM: Kodak

Blue Cyan Green Yellow Red Magenta White 3/Color Black



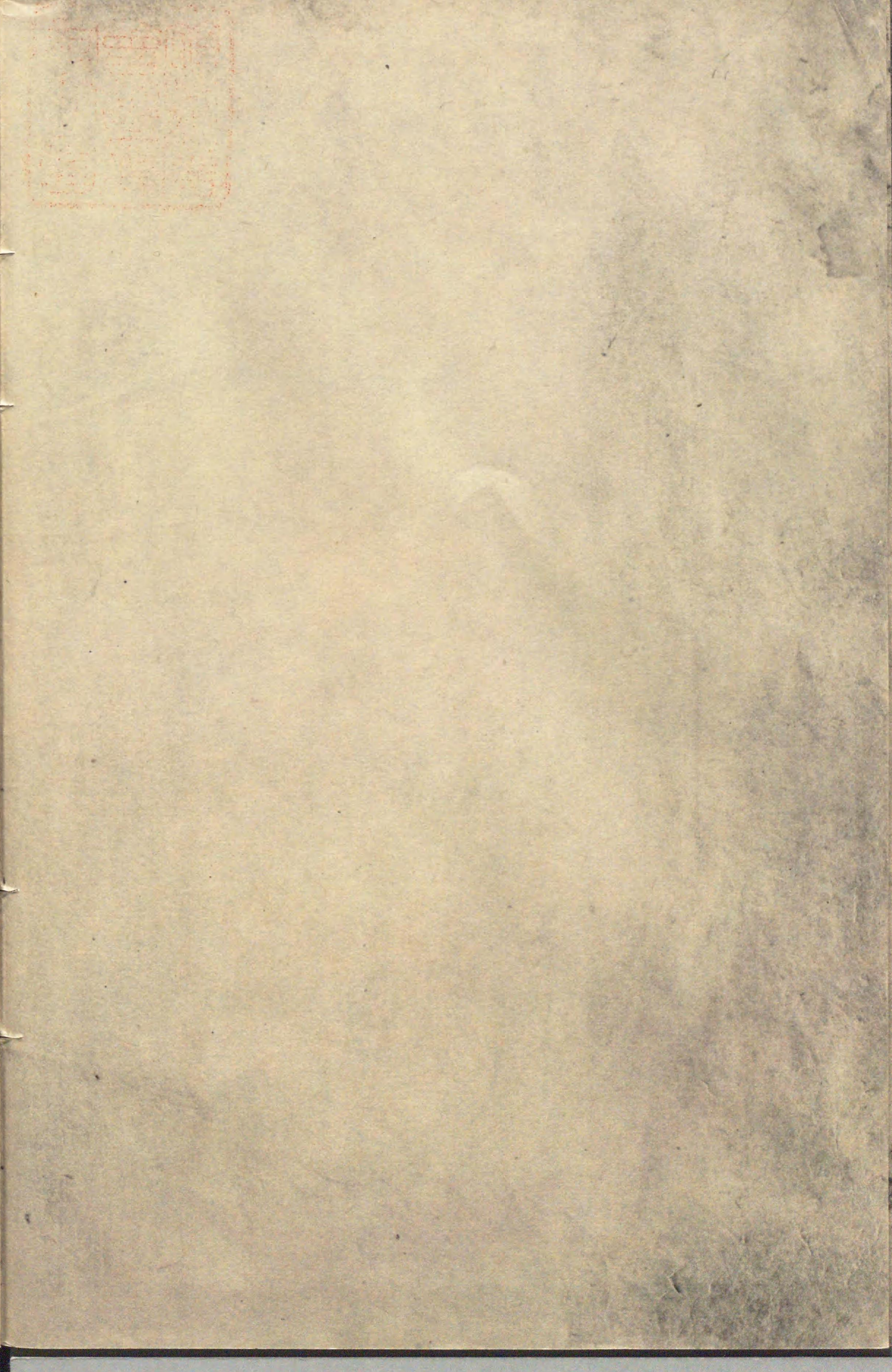
914.32





216478

Handwritten text in a cursive script, likely a letter or document, written on aged paper. The text is arranged in approximately 12 horizontal lines. The script is dense and characteristic of historical cursive handwriting.



Handwritten text in a cursive script, likely a historical document or manuscript. The text is written in a dark ink on aged, yellowish paper. It consists of approximately 12 lines of text, with some lines starting with a large initial letter. The script is highly stylized and difficult to decipher without a key.

Handwritten text in a cursive script, continuing from the previous page. The text is written in a dark ink on aged, yellowish paper. It consists of approximately 12 lines of text, with some lines starting with a large initial letter. The script is highly stylized and difficult to decipher without a key.

Handwritten text in a cursive script, likely a historical document or manuscript. The text is written in a dark ink on aged, yellowish paper. It consists of approximately 12 lines of text, starting with a large initial letter 'A' and ending with a period. The script is highly stylized and characteristic of the early modern period.

Handwritten text in a cursive script, continuing from the previous page. The text is written in a dark ink on aged, yellowish paper. It consists of approximately 12 lines of text, starting with a large initial letter 'A' and ending with a period. The script is highly stylized and characteristic of the early modern period.

Handwritten text in a cursive script, likely a historical document or manuscript. The text is written in a dark ink on aged, yellowish paper. It consists of approximately 15 lines of text, with some lines starting with a large initial letter. The script is highly stylized and difficult to decipher without a key. The text is arranged in a single column on the page.

Handwritten text in a cursive script, likely a historical document or manuscript. The text is written in a dark ink on aged, yellowish paper. It consists of approximately 15 lines of text, with some lines starting with a large initial letter. The script is highly stylized and difficult to decipher without a key. The text appears to be a list or a series of entries, possibly related to a historical record or a collection of items.

216478

Handwritten text in a cursive script, likely a historical document or manuscript, spanning two pages. The text is written in a dark ink on aged, yellowish paper. The script is dense and continuous across both pages, with some variations in line spacing and character style. The right page shows a clear margin on the right side, while the left page is filled with text. The overall appearance is that of a well-preserved but aged historical record.

Handwritten text in a cursive script, likely a historical document or manuscript, spanning two pages. The text is written in a dark ink on aged, yellowish paper. The script is highly stylized and appears to be a form of shorthand or a specific dialect. The text is arranged in approximately 15 horizontal lines across the pages, with some lines starting with a small mark that could be a paragraph indicator or a specific character. The overall appearance is that of a personal or official record from a past era.

Handwritten text in a cursive script, likely a historical document or manuscript. The text is written in a dark ink on aged, yellowish paper. It consists of approximately 12 lines of text, with some lines starting with a small decorative flourish or initial. The script is dense and characteristic of early modern European handwriting.

Handwritten text in a cursive script, continuing from the previous page. The text is written in a dark ink on aged, yellowish paper. It consists of approximately 12 lines of text, with some lines starting with a small decorative flourish or initial. The script is dense and characteristic of early modern European handwriting.

Handwritten text in a cursive script, likely a historical document or letter. The text is written in a dark ink on aged, yellowish paper. It consists of approximately 12 lines of text, starting with a large initial letter 'G' and ending with a flourish.

Handwritten text in a cursive script, likely a historical document or letter. The text is written in a dark ink on aged, yellowish paper. It consists of approximately 12 lines of text, starting with a large initial letter 'G' and ending with a flourish.

Handwritten text in a cursive script, likely a historical document or manuscript. The text is written in a dark ink on aged, yellowish paper. The script is dense and fills most of the page, with some lines starting with larger, possibly decorative or initial letters. The text is arranged in approximately 15 horizontal lines across the page.

Handwritten text in a cursive script, likely a historical document or manuscript. The text is arranged in approximately 18 horizontal lines across the page. The script is dense and characteristic of early modern European handwriting. The paper shows signs of age, including yellowing and some staining, particularly in the lower right quadrant.

Handwritten text in a cursive script, likely a letter or document. The text is written in a fluid, connected style across approximately 12 lines. The ink is dark and the paper shows signs of age and wear.

Handwritten text in a cursive script, continuing from the previous page. The text is written in a fluid, connected style across approximately 12 lines. The ink is dark and the paper shows signs of age and wear.

Handwritten text in a cursive script, likely a historical document or letter. The text is written in a dark ink on aged, yellowish paper. It consists of approximately 12 lines of text, starting with a large initial letter 'G'.

Handwritten text in a cursive script, continuing from the previous page. The text is written in a dark ink on aged, yellowish paper. It consists of approximately 12 lines of text, starting with a large initial letter 'G'.

Handwritten text in a cursive script, likely a historical document or letter. The text is written in a dark ink on aged, yellowish paper. It consists of approximately 12 lines of text, starting with a large initial letter 'S'.

Handwritten text in a cursive script, continuing from the previous page. The text is written in a dark ink on aged, yellowish paper. It consists of approximately 12 lines of text, starting with a large initial letter 'S'.

Handwritten text in a cursive script, likely a historical document or manuscript. The text is written in a dark ink on aged, yellowish paper. The script is dense and fills most of the page, with some lines starting with a large initial letter. The text is written in a cursive script, likely a historical document or manuscript. The text is written in a dark ink on aged, yellowish paper. The script is dense and fills most of the page, with some lines starting with a large initial letter. The text is written in a cursive script, likely a historical document or manuscript. The text is written in a dark ink on aged, yellowish paper. The script is dense and fills most of the page, with some lines starting with a large initial letter.

Handwritten text in a cursive script, likely a historical document or letter. The text is written in a dark ink on aged, yellowish paper. It consists of approximately 12 lines of text, starting with a large initial letter 'S' on the left side of the page. The script is dense and characteristic of early modern European handwriting.

Handwritten text in a cursive script, continuing from the previous page. The text is written in a dark ink on aged, yellowish paper. It consists of approximately 12 lines of text, starting with a large initial letter 'S' on the left side of the page. The script is dense and characteristic of early modern European handwriting.

Handwritten text in Arabic script, right page, top section.

Handwritten number or symbol, right page, middle section.

Main body of handwritten text in Arabic script, right page.

Main body of handwritten text in Arabic script, left page.

Handwritten text in a cursive script, likely a historical document or manuscript. The text is written in dark ink on aged, yellowish paper. It consists of approximately 15 lines of text, with some lines starting with a large initial letter. The script is highly stylized and difficult to decipher without a key. The text is arranged in a single column on each page, with some lines extending across the gutter.

Handwritten text in a cursive script, likely a historical document or manuscript. The text is written in a dark ink on aged, yellowish paper. The script is dense and fills most of the page, with some lines starting with a large initial letter. The text is written in a cursive script, likely a historical document or manuscript. The text is written in a dark ink on aged, yellowish paper. The script is dense and fills most of the page, with some lines starting with a large initial letter. The text is written in a cursive script, likely a historical document or manuscript. The text is written in a dark ink on aged, yellowish paper. The script is dense and fills most of the page, with some lines starting with a large initial letter.

Handwritten text in a cursive script, likely a historical document or letter. The text is written in a dark ink on aged, yellowish paper. The script is dense and fills most of the page. There are some faint markings and a small, illegible mark near the bottom center of the page.

Handwritten text in a cursive script, likely a historical document or letter, spanning two pages. The text is written in a dark ink on aged, yellowish paper. The script is highly stylized and difficult to decipher without specialized knowledge of the language or dialect. The text is arranged in approximately 15 lines per page, with some lines starting with a small mark or symbol. The overall appearance is that of a well-preserved but aged manuscript.

Handwritten text in a cursive script, likely a historical document or letter, covering the left page of the manuscript.

Handwritten text in a cursive script, likely a historical document or letter, covering the right page of the manuscript.

Handwritten text in a cursive script, likely a historical document or manuscript. The text is written in a dark ink on aged, yellowish paper. The script is dense and fills most of the page, with some lines starting with capital letters. The handwriting is consistent throughout, suggesting a single scribe. The text is arranged in approximately 15 lines per page, with some variations in line length and spacing. The overall appearance is that of a well-preserved historical record.

Handwritten text in Arabic script, top line of the right page.

Main body of handwritten text in Arabic script on the right page, consisting of approximately 10 lines.

Main body of handwritten text in Arabic script on the left page, consisting of approximately 10 lines.

Handwritten text in Arabic script, consisting of approximately 15 lines of dense, cursive writing. The text is written in black ink on aged, yellowish paper. The script is highly stylized and characteristic of classical Arabic calligraphy. The lines are closely spaced and run horizontally across the page. The text appears to be a continuous passage, possibly a letter or a section of a larger work. The ink shows some signs of fading and the paper has a slightly textured appearance.

Handwritten text in a cursive script, likely a historical document or letter. The text is written in a dark ink on aged, yellowish paper. It consists of approximately 15 lines of text, with some lines starting with a large initial letter. The script is highly stylized and difficult to decipher without a key.

九月

Handwritten text line

Handwritten text line

Handwritten text line

Handwritten text line

Handwritten text line

Handwritten text in a cursive script, likely a historical document or manuscript. The text is written in a dark ink on aged, yellowish paper. The script is dense and fills most of the page, with some lines starting with a large initial letter. The text is arranged in approximately 15 horizontal lines across the page.

Handwritten text in a cursive script, likely Arabic or Persian, spanning two pages. The text is arranged in approximately 15 horizontal lines per page, written from right to left. The script is dense and fluid, characteristic of historical manuscript styles. The paper shows signs of age, including yellowing and some staining, particularly in the center fold and along the edges. The ink is dark, providing a clear contrast against the aged paper. The overall appearance is that of a well-preserved but clearly antique document.

Handwritten text in a cursive script, likely a historical document or manuscript. The text is written in a dark ink on aged, yellowish paper. The script is dense and continuous across the page, with some variations in line thickness and spacing. The text is arranged in approximately 15 horizontal lines, filling most of the page area. The characters are small and closely packed, characteristic of a cursive hand. There are some faint markings and bleed-through visible on the page, suggesting it is part of a bound volume.

Handwritten text in a cursive script, likely a historical document or manuscript, spanning two pages. The text is written in a dark ink on aged, yellowish paper. The script is highly stylized and appears to be a form of shorthand or a specific dialect of a historical language. The text is arranged in approximately 15 horizontal lines across both pages, with some lines starting with a small decorative flourish or initial letter. The overall appearance is that of a well-preserved but aged historical record.

Handwritten text in a cursive script, likely a letter or a page from a manuscript. The text is written in a dark ink on aged, yellowish paper. It begins with a large initial letter, possibly 'D' or 'Dion', followed by several lines of text. The script is highly stylized and characteristic of the late 15th or early 16th century.

Handwritten text in a cursive script, continuing from the previous page. The text is written in a dark ink on aged, yellowish paper. It begins with a large initial letter, possibly 'D' or 'Dion', followed by several lines of text. The script is highly stylized and characteristic of the late 15th or early 16th century.

Handwritten text in a cursive script, likely a historical document or letter. The text is written in dark ink on aged, yellowish paper. It consists of approximately 15 lines of text, with some lines starting with capital letters. The script is highly stylized and difficult to decipher without a key. The text is arranged in a single column on each page, with a clear margin on the left side. The overall appearance is that of a well-preserved but challenging-to-read historical manuscript.

Handwritten text in a cursive script, likely a letter or a page from a manuscript. The text is written in a fluid, connected style across approximately 12 lines.

5

Handwritten text in a cursive script, continuing from the previous page. The text is written in a fluid, connected style across approximately 12 lines.

Handwritten text in a cursive script, likely a historical document or manuscript, spanning two pages. The text is written in a dark ink on aged, yellowish paper. The script is dense and continuous across the lines, with some variations in line length and spacing. The text appears to be a single paragraph or a series of related entries, possibly a list or a narrative. The handwriting is consistent throughout, suggesting a single scribe. The paper shows signs of age, including slight discoloration and some minor wear at the edges. The text is written in a cursive style that is characteristic of the 17th or 18th century. The lines are closely spaced, and the overall appearance is that of a well-preserved historical document.

Handwritten text in a cursive script, likely a historical document or manuscript. The text is written in a dark ink on aged, yellowish paper. It consists of approximately 12 lines of text, with some lines starting with a small decorative flourish or initial. The script is dense and characteristic of early modern European handwriting.

Handwritten text in a cursive script, continuing from the previous page. The text is written in a dark ink on aged, yellowish paper. It consists of approximately 12 lines of text, with some lines starting with a small decorative flourish or initial. The script is dense and characteristic of early modern European handwriting.

Handwritten text in a cursive script, continuing from the previous page. The text is written in a dark ink on aged, yellowish paper. It consists of approximately 12 lines of text, with some lines starting with a small decorative flourish or initial. The script is dense and characteristic of early modern European handwriting.

Handwritten text in a cursive script, likely a historical document or manuscript. The text is written in a single column on a page of aged paper. The script is dense and flowing, characteristic of early modern European cursive. The text is written in a single column on a page of aged paper. The script is dense and flowing, characteristic of early modern European cursive. The text is written in a single column on a page of aged paper. The script is dense and flowing, characteristic of early modern European cursive.

Handwritten text in a cursive script, likely a historical document or letter. The text is written in a dark ink on aged, yellowish paper. It consists of approximately 12 lines of text, starting with a small symbol or character at the top left. The script is dense and flowing, characteristic of historical cursive handwriting.

Continuation of the handwritten text from the previous page, written in the same cursive script. It also consists of approximately 12 lines of text, maintaining the same dense and flowing style. The text appears to be a single continuous piece of writing across the two pages.

Handwritten text in a cursive script, likely a historical document or manuscript. The text is written in a dark ink on aged, yellowish paper. It consists of approximately 15 lines of text, arranged in a single column. The script is highly stylized and difficult to decipher without specialized knowledge of the language or dialect. The lines are closely spaced and run horizontally across the page.

Handwritten text in a cursive script, likely a historical document or manuscript. The text is written in a dark ink on aged, yellowish paper. The script is dense and fills most of the page, with some lines starting with a small decorative flourish. The text is arranged in approximately 15 horizontal lines across the page.

Handwritten text in a cursive script, likely a historical document or manuscript. The text is written in a dark ink on aged, yellowish paper. It consists of approximately 15 lines of text, with some lines starting with a large, decorative initial letter. The script is highly stylized and difficult to decipher without specialized knowledge of the language and script. The text appears to be a continuous narrative or record, possibly related to a historical event or a personal account. The overall appearance is that of a well-preserved but aged manuscript.

Handwritten text in Arabic script, right page. The text is written in a cursive style and spans approximately 12 lines. It appears to be a continuation of a letter or a treatise.

Handwritten text in Arabic script, left page. The text is written in a cursive style and spans approximately 12 lines. It appears to be a continuation of a letter or a treatise.

Handwritten text in a cursive script, likely Arabic or Persian, spanning the left page of the manuscript. The text is arranged in approximately 12 horizontal lines, written from right to left. The ink is dark and the script is highly stylized and fluid.

Handwritten text in a cursive script, likely Arabic or Persian, spanning the right page of the manuscript. The text is arranged in approximately 12 horizontal lines, continuing from the left page. The ink is dark and the script is highly stylized and fluid.

Handwritten text in a cursive script, likely a historical document or manuscript, spanning two pages. The text is written in dark ink on aged, yellowish paper. The script is dense and continuous across both pages, with some variations in line spacing and ink saturation. The text appears to be a single, flowing passage, possibly a letter or a record, written in a historical or regional dialect. The right page shows a slight indentation at the top, suggesting it was part of a bound volume. The overall appearance is that of an old, well-preserved manuscript.

Handwritten text in Arabic script, first line of the left page.

Handwritten text in Arabic script, second line of the left page.

Handwritten text in Arabic script, third line of the left page.

Handwritten text in Arabic script, fourth line of the left page.

Handwritten text in Arabic script, first line of the right page.

Handwritten text in Arabic script, second line of the right page.

Handwritten text in Arabic script, third line of the right page.

Handwritten text in Arabic script, fourth line of the right page.

Handwritten text in a cursive script, likely a historical document or letter. The text is written in a dark ink on aged, yellowish paper. It consists of approximately 12 lines of text, starting with a large initial letter 'K' and ending with a small flourish. The script is highly stylized and characteristic of the early modern period.

Handwritten text in a cursive script, likely a historical document or letter. The text is written in a dark ink on aged, yellowish paper. It consists of approximately 12 lines of text, starting with a large initial letter 'K' and ending with a small flourish. The script is highly stylized and characteristic of the early modern period.

Handwritten text in a cursive script, likely a historical document or manuscript, spanning two pages. The text is written in a dark ink on aged, yellowish paper. The script is dense and continuous across both pages, with some variations in line thickness and spacing. The right page contains approximately 12 lines of text, while the left page contains approximately 11 lines. The text appears to be a single, flowing passage, possibly a letter or a record of events. The ink shows some signs of fading and bleed-through from the reverse side of the pages.

Handwritten text in Arabic script, right page, top section.

Handwritten text in Arabic script, right page, middle section.

Handwritten text in Arabic script, right page, bottom section.

Handwritten text in Arabic script, left page.

Handwritten text in Arabic script, consisting of approximately 18 lines of dense, cursive writing. The text is written in black ink on aged, yellowish paper. The script is highly stylized and characteristic of classical Arabic calligraphy. The lines are closely spaced and run horizontally across the page. The text appears to be a continuous passage, possibly a letter or a section of a manuscript. The ink shows some signs of fading and the paper has a slightly textured appearance.

Handwritten text in a cursive script, likely a letter or document, starting with a large initial letter.

Handwritten text in a cursive script, continuing the text from the previous page.

Handwritten text in a cursive script, continuing the text from the previous page.

Handwritten text in a cursive script, likely a letter or document. The text is written in a fluid, connected style across approximately 12 lines. The characters are dark and the paper shows signs of age and wear.

Handwritten text in a cursive script, continuing from the previous page. The text is written in a fluid, connected style across approximately 12 lines. The characters are dark and the paper shows signs of age and wear.

Handwritten text in a cursive script, likely a historical document or manuscript. The text is written in a dark ink on aged, yellowish paper. The script is dense and continuous across the page, with some variations in line height and spacing. The text is arranged in approximately 15 horizontal lines, filling most of the page area. The characters are highly stylized and interconnected, characteristic of a cursive hand. The overall appearance is that of a well-preserved but aged piece of paper with a single column of text.

Handwritten text in a cursive script, likely a historical document or manuscript. The text is written in a dark ink on aged, yellowish paper. The script is dense and continuous across the page, with some variations in line thickness and spacing. The text is arranged in a single column, running from top to bottom. The overall appearance is that of a well-preserved but aged piece of paper with a clear, flowing calligraphic style.

Handwritten text in a cursive script, likely a historical document or manuscript. The text is written in a dark ink on aged, yellowish paper. The script is dense and fills most of the page, with some lines starting with a large initial letter. The text is written in a cursive script, likely a historical document or manuscript. The text is dense and fills most of the page, with some lines starting with a large initial letter. The text is written in a cursive script, likely a historical document or manuscript. The text is dense and fills most of the page, with some lines starting with a large initial letter.

Handwritten text in Arabic script, likely a manuscript or letter, written in a cursive style. The text is arranged in approximately 15 horizontal lines across the page. The script is dense and characteristic of classical Arabic calligraphy. The paper shows signs of age, including some staining and discoloration, particularly towards the bottom and right edges. The ink is dark, and the lines are well-defined, though some characters are slightly faded or overlapping due to the cursive nature of the script.

Handwritten text in a cursive script, likely a historical document or manuscript. The text is written in a dark ink on aged, yellowish paper. The script is dense and fills most of the page, with some lines starting with large, decorative initial letters. The text is arranged in approximately 15 horizontal lines across the page.

Handwritten text in a cursive script, likely a historical document or manuscript. The text is written in a dark ink on aged, yellowish paper. The script is dense and continuous across the page, with some variations in line height and spacing. The text appears to be a single paragraph or a series of connected lines of prose. The characters are highly stylized and difficult to decipher without a key or context. The overall appearance is that of a well-preserved but aged historical record.

Handwritten text in a cursive script, likely a historical document or manuscript. The text is written in dark ink on aged, yellowish paper. It consists of approximately 12 lines of text, with some lines starting with a large initial letter. The script is highly stylized and characteristic of the early modern period.

Handwritten text in a cursive script, continuing from the previous page. The text is written in dark ink on aged, yellowish paper. It consists of approximately 12 lines of text, with some lines starting with a large initial letter. The script is highly stylized and characteristic of the early modern period.

Handwritten text in a cursive script, likely a historical document or letter. The text is written in a dark ink on aged, yellowish paper. It consists of approximately 12 lines of text, starting with a large initial letter 'S' on the first line. The script is highly stylized and characteristic of the early modern period.

Handwritten text in a cursive script, continuing from the previous page. The text is written in a dark ink on aged, yellowish paper. It consists of approximately 12 lines of text, starting with a large initial letter 'S' on the first line. The script is highly stylized and characteristic of the early modern period.

Handwritten text in Arabic script, consisting of approximately 10 lines of dense cursive writing.

Handwritten text in Arabic script, consisting of approximately 10 lines of dense cursive writing.

Handwritten text in Arabic script, consisting of approximately 12 lines of dense cursive writing.

Handwritten text in Arabic script, continuing from the previous page, consisting of approximately 12 lines of dense cursive writing.

Handwritten text in a cursive script, likely a historical document or manuscript. The text is written in a dark ink on aged, yellowish paper. The script is dense and fills most of the page, with some lines starting with larger, possibly decorative or initial letters. The text is arranged in approximately 15 horizontal lines across the page.

Handwritten text in a cursive script, likely a historical document or manuscript. The text is written in a dark ink on aged, yellowish paper. It consists of approximately 15 lines of text, with some lines starting with a small mark resembling a comma or a specific character. The script is dense and flowing, characteristic of early modern handwriting. The text is arranged in a single column on each page, with a clear margin on the right side. The overall appearance is that of a well-preserved historical document.

Handwritten text in a cursive script, likely a historical document or letter. The text is written in a dark ink on aged, yellowish paper. It consists of approximately 12 lines of text, starting with a large initial letter 'S' and ending with a smaller signature or mark.

Handwritten text in a cursive script, continuing from the previous page. It consists of approximately 12 lines of text, starting with a large initial letter 'S' and ending with a smaller signature or mark. The script is consistent with the text on the adjacent page.

Handwritten text in a cursive script, likely a historical document or manuscript. The text is written in a dark ink on aged, yellowish paper. The script is dense and fills most of the page, with some lines starting with a large initial letter. The text is arranged in approximately 15 horizontal lines across the page.

Handwritten text in a cursive script, likely a historical document or manuscript. The text is written in a dark ink on aged, yellowish paper. The script is highly stylized and difficult to decipher, but it appears to be a continuous block of text spanning the width of the page. The lines of text are closely spaced and flow from left to right across the page.

Handwritten text in a cursive script, likely a historical document or letter. The text is written in a dark ink on aged, yellowish paper. It consists of approximately 12 lines of text, with some lines starting with a large initial letter. The script is highly stylized and characteristic of the Ottoman or Persian calligraphic tradition.

Handwritten text in a cursive script, continuing from the previous page. The text is written in a dark ink on aged, yellowish paper. It consists of approximately 12 lines of text, with some lines starting with a large initial letter. The script is highly stylized and characteristic of the Ottoman or Persian calligraphic tradition.

Handwritten text in a cursive script, likely a historical document or manuscript. The text is written in a dark ink on aged, yellowish paper. It consists of approximately 15 lines of text, with some lines starting with a large initial letter. The script is highly stylized and difficult to decipher without a key. The text appears to be a formal document, possibly a contract or a record of a transaction, given the presence of what might be names or titles at the beginning of some lines. The overall appearance is that of a well-preserved but aged historical document.

Handwritten text in a cursive script, likely a historical document or manuscript. The text is written in a dark ink on aged, yellowish paper. The script is highly stylized and difficult to decipher, but appears to be a form of early modern European cursive. The text is arranged in approximately 15 lines across the page. The first line begins with a large, ornate initial letter, possibly 'G'. The text continues down the page, with some lines showing signs of fading or ink bleed-through from the reverse side. The overall appearance is that of a well-preserved but aged historical document.

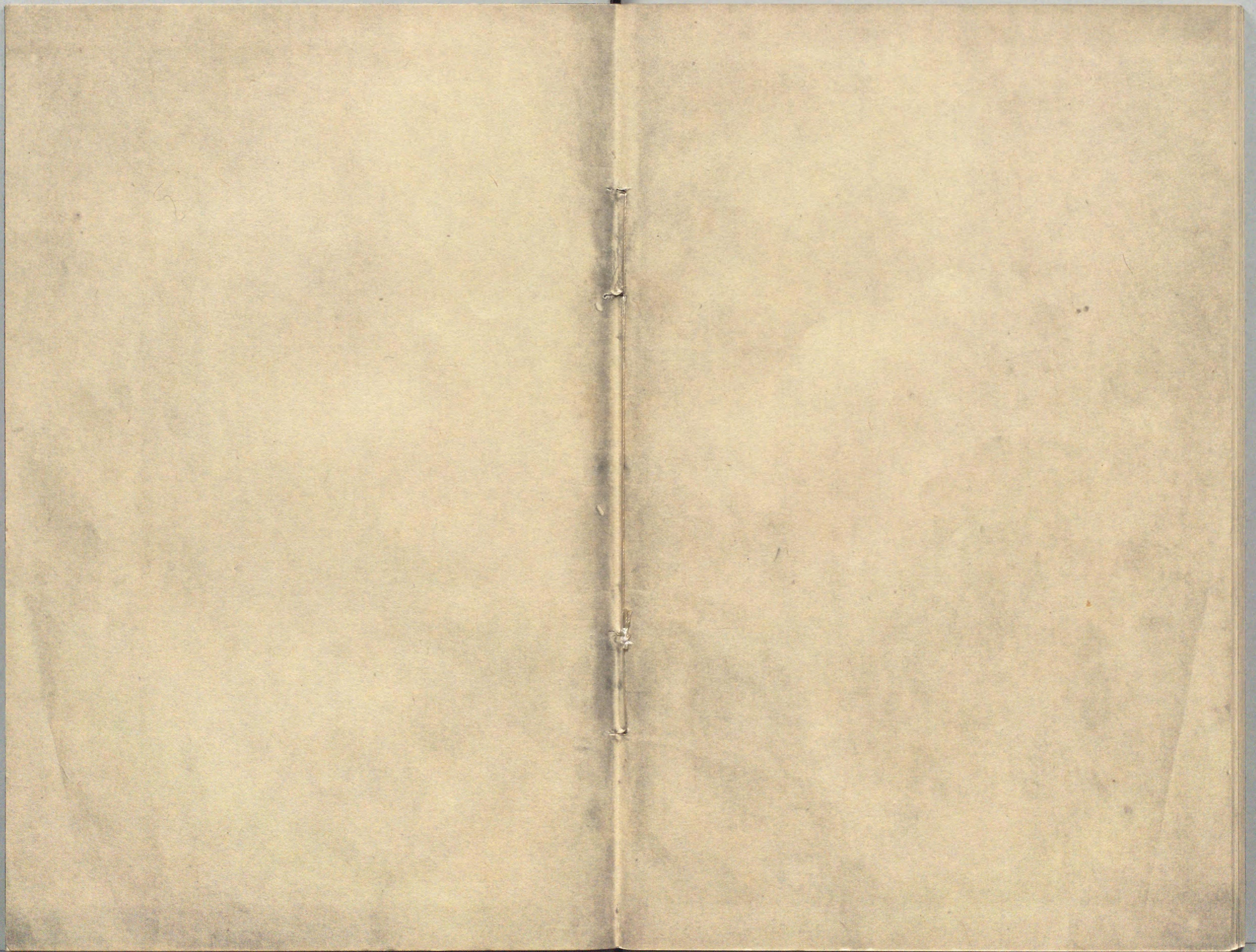
Handwritten text in a cursive script, likely a historical document or manuscript. The text is written in a dark ink on aged, yellowish paper. The script is highly stylized and difficult to decipher, but appears to be a form of early modern European cursive. The text is arranged in approximately 15 lines across the page. The first line begins with a large, ornate initial letter, possibly 'D'. The text continues down the page, with some lines showing signs of fading or ink bleed-through from the reverse side. The overall appearance is that of a well-preserved but aged historical document.

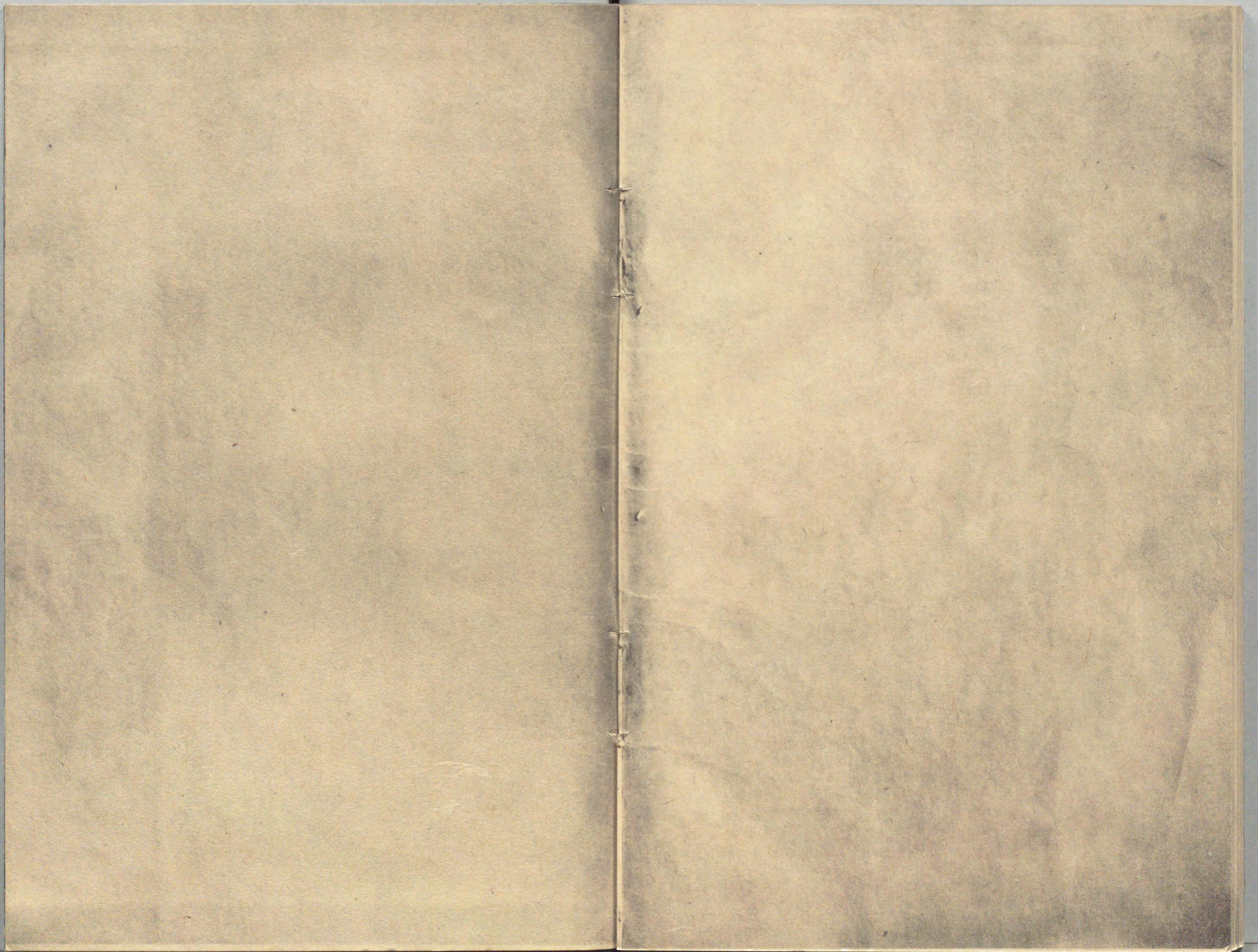
Handwritten text, possibly a signature or date, located at the top of the right page.

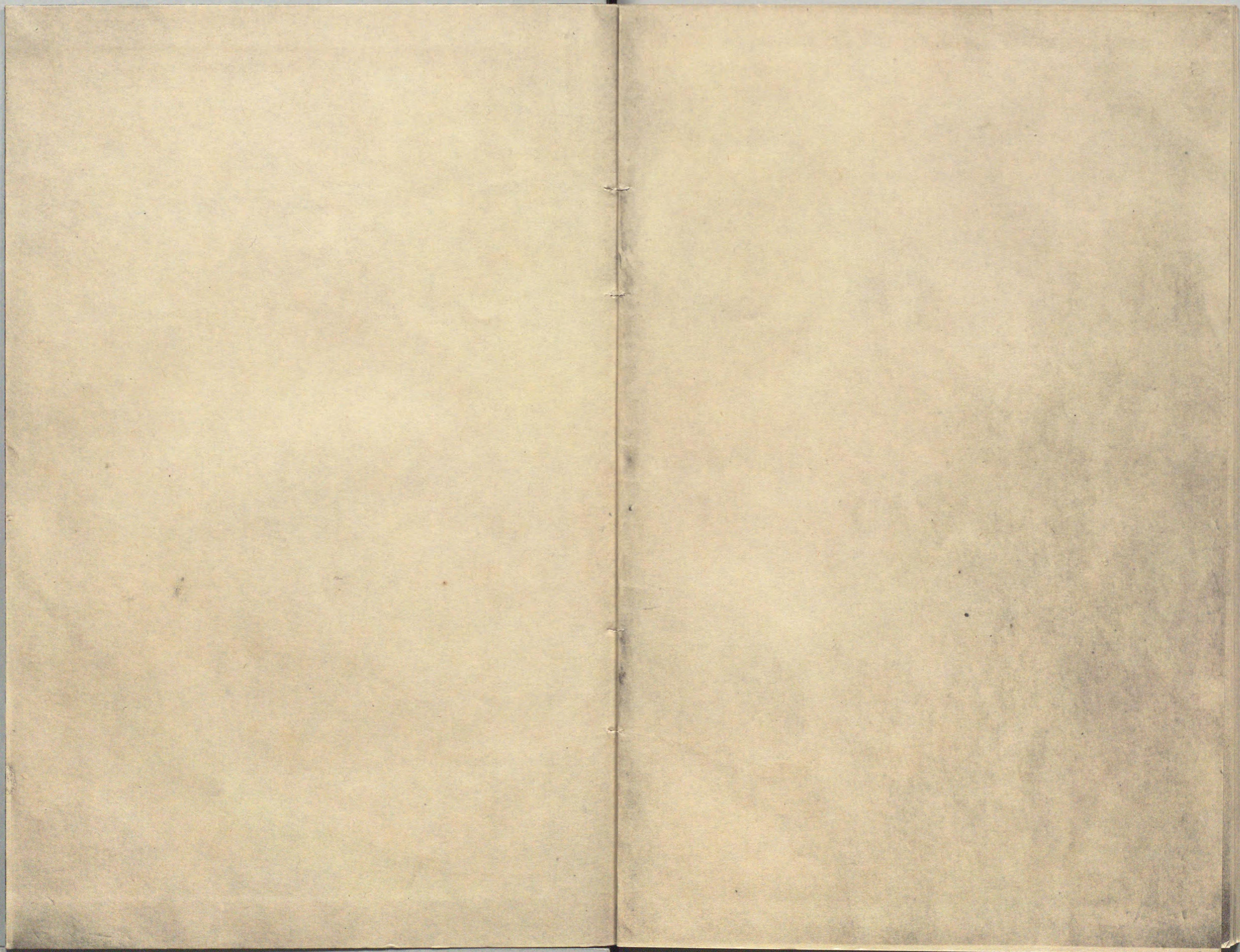
Handwritten text, possibly a name or title, located below the top text on the right page.

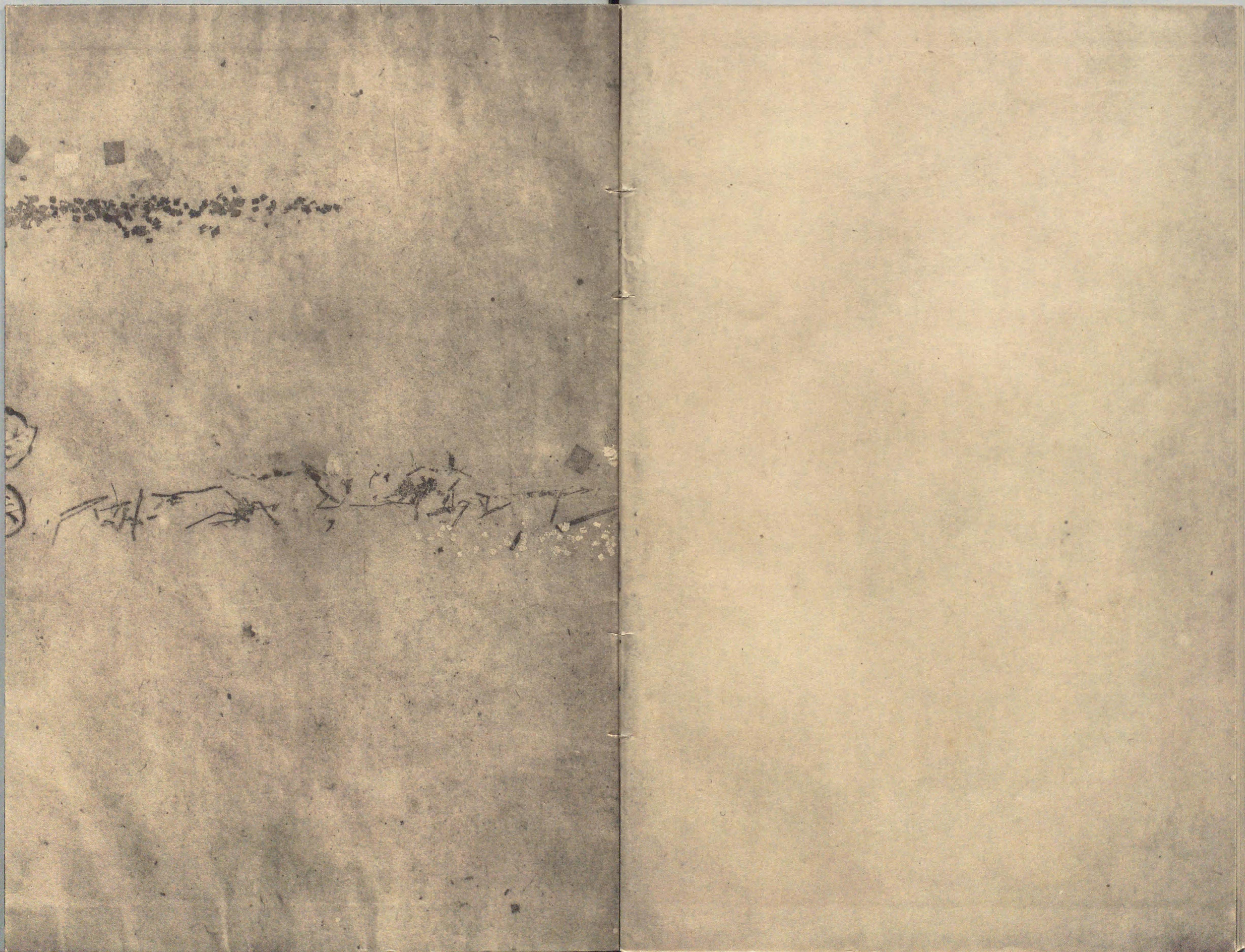
Main body of handwritten text on the right page, consisting of several lines of cursive script.

The left page of the document is mostly blank, showing signs of age and wear, with a faint diagonal crease or fold visible near the bottom left corner.











枕草子

付
解説

6冊

914.32-m-(s)



1200600661614

集約済 6冊

