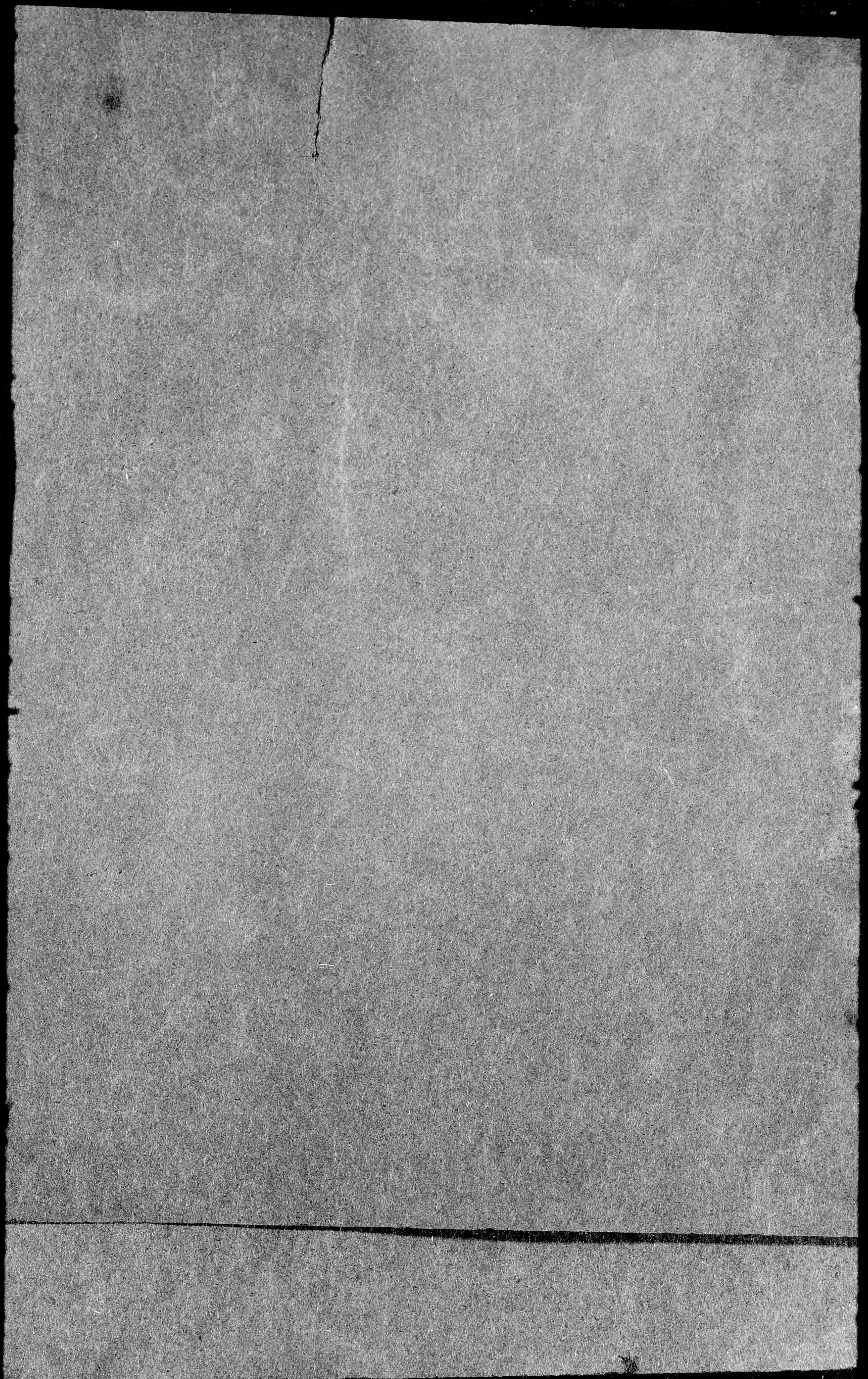




POB-2-1-11 11-5-5-009







POD-2-1-11 11-5-5-009



PDD 2-27
1-5-5-009







PPD-2-13 8-8-5-009



500-8-1-10 01-1-10







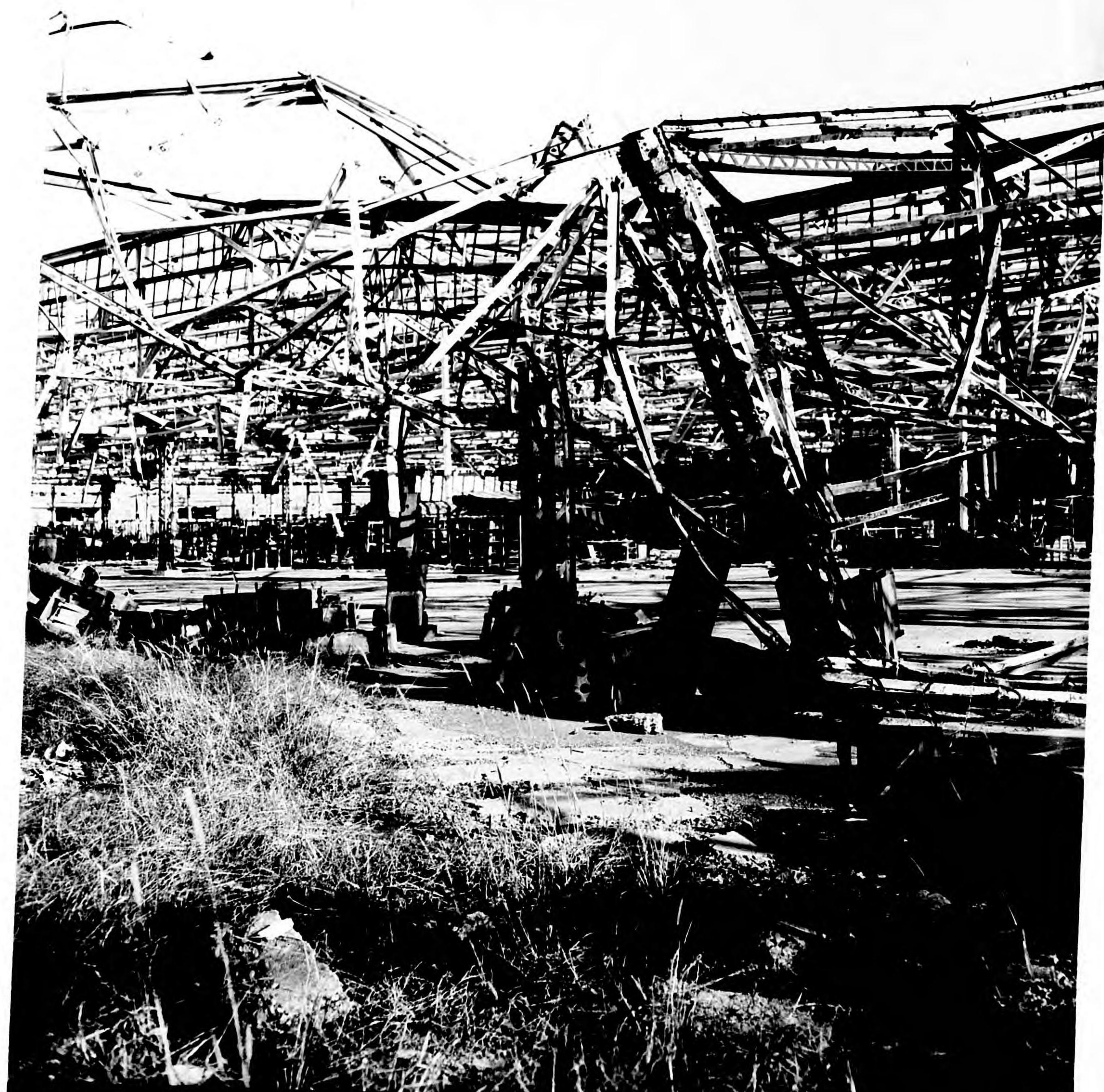
POD-2-1-3

E-2-3

500-2-3



HDD-2-1-1-3



P00-22-6

500-5-5-009



PDD 2-24 * - 5-5-66

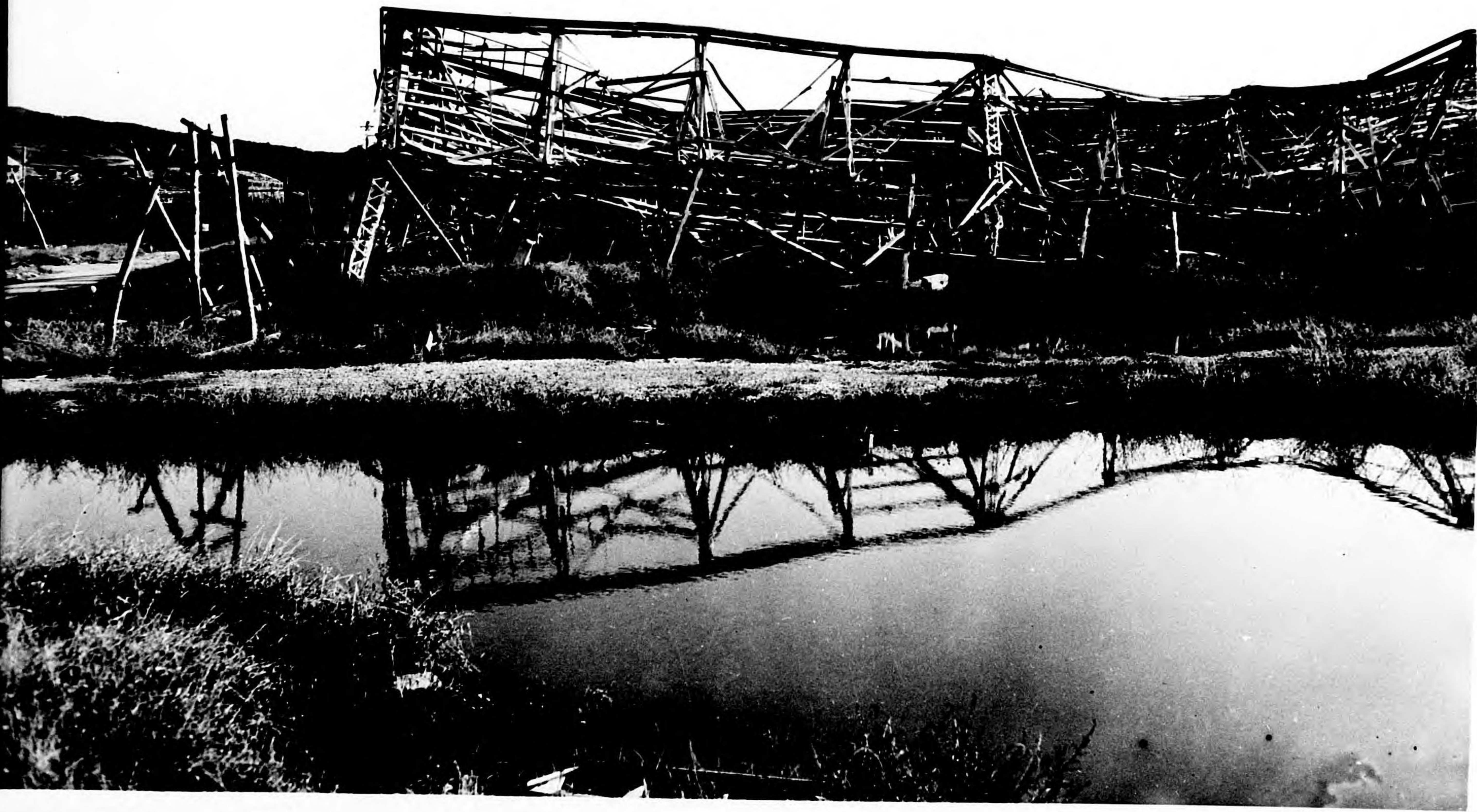




PDD-2-1-9

P-6-2-009

PD 11 2-2-12 51 - 5-5 - (104



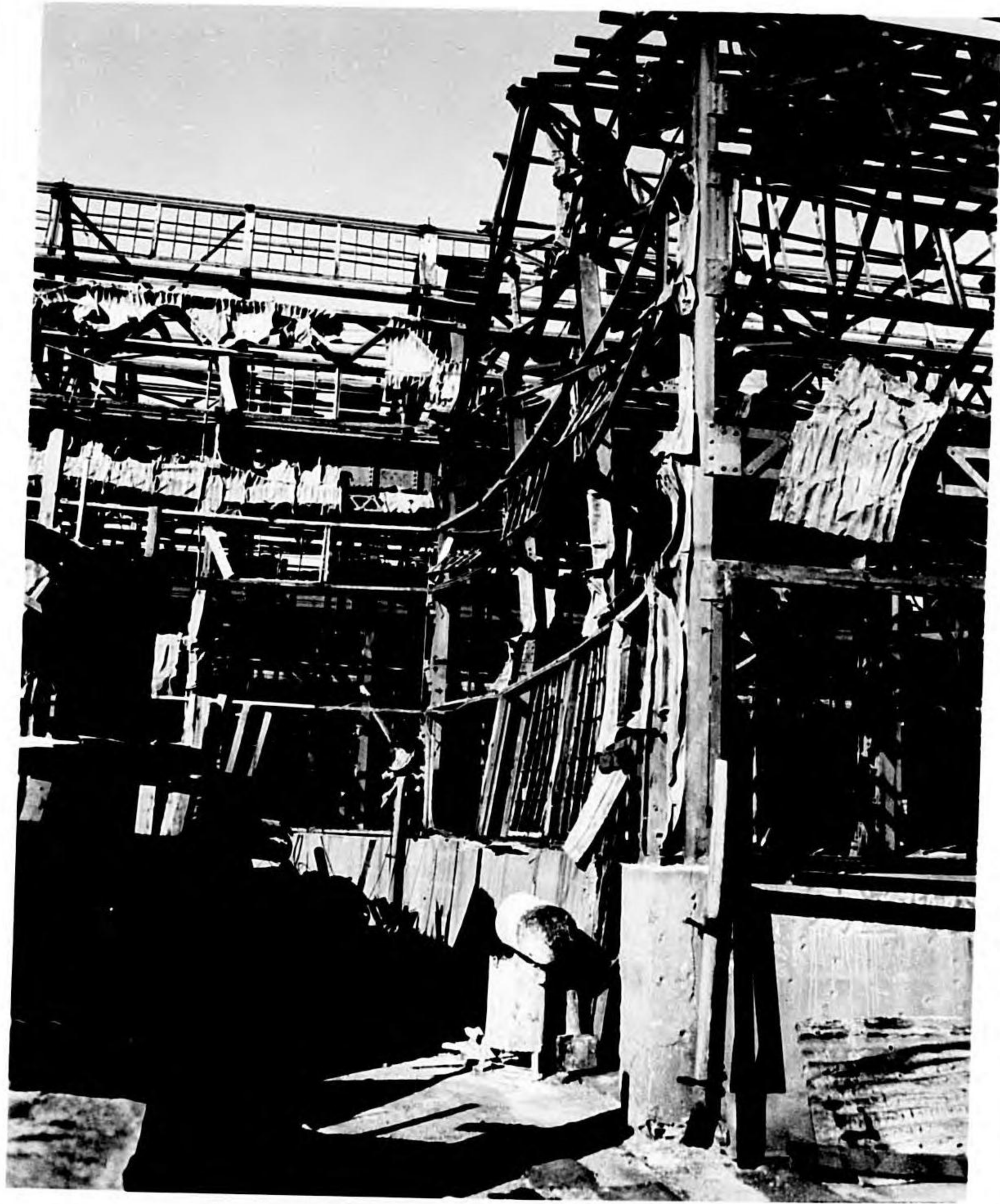


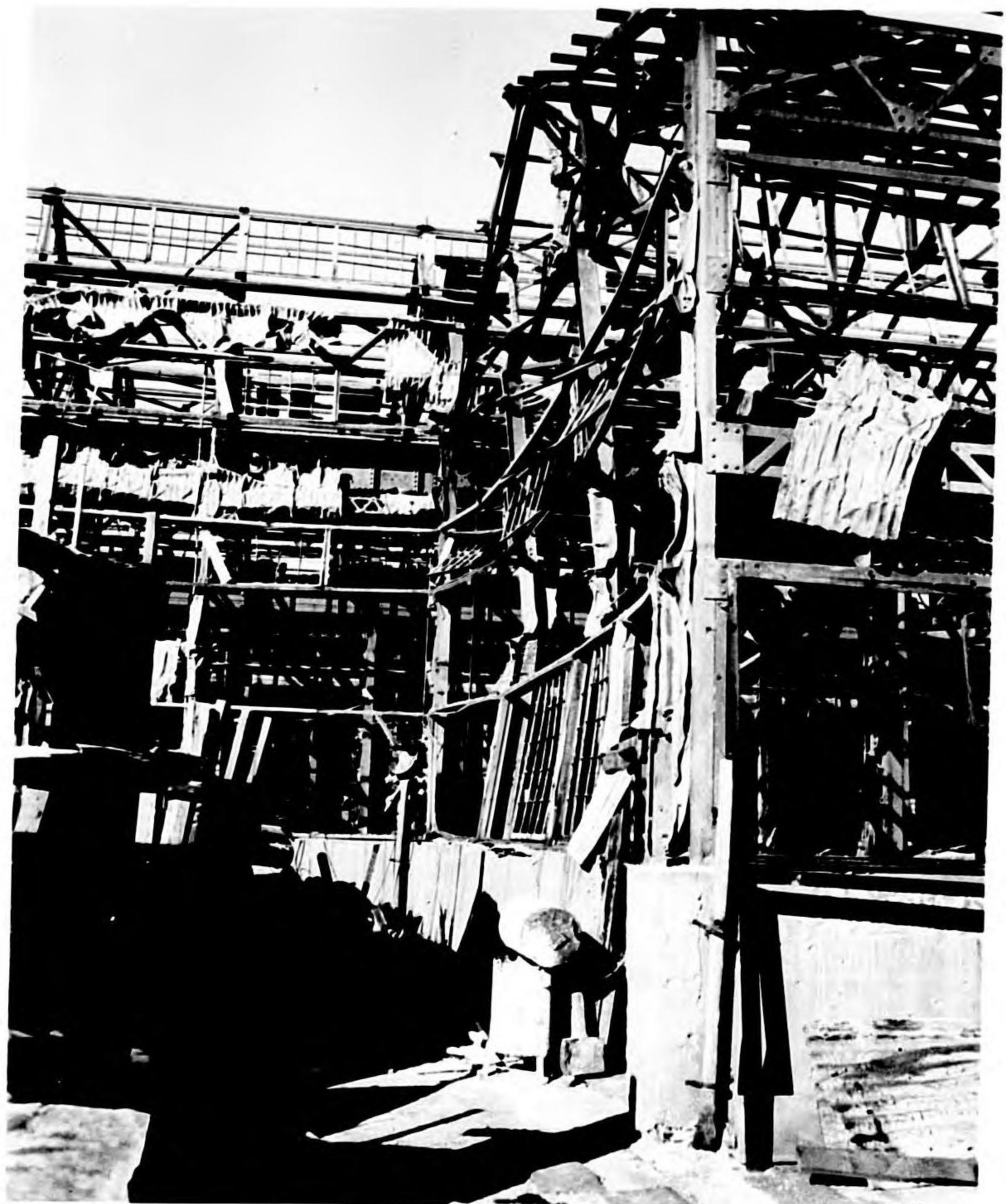


P110-1-111 1 550-5-1













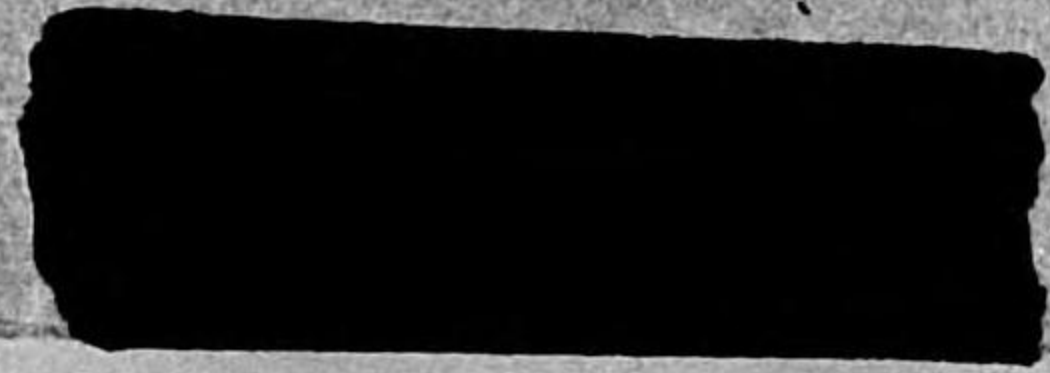
COE 28 FOCE 32 X
110

UNIT PHYSICAL DAMAGE TARGET 169
DATE TAKEN OCT 27TH 1945
WHERE TAKEN KOBE, JAPAN.

GIVE COMPLETE STORY OF PICTURE
Include following where applicable:
Names, with initials or first names, rank and
hometown; DETAILS of occasion or action;
ALTITUDE flown and FOCAL LENGTH of lens
(in all aerial photos).
OFFICIAL U. S. NAVY PHOTOGRAPH.

Mitsubishi Heavy Industry, Kobe Japan

Negatives 1 through 5



CALVIN

33-70 CE 37

X

110

UNIT PHYSICAL DAMAGE No TARGET 169

DATE TAKEN OCT 27th 1945

WHERE TAKEN KOBE, JAPAN

GIVE COMPLETE STORY OF PICTURE

Include following where applicable:

Names, with initials or first names, rank and hometown; DETAILS of occasion or action; ALTITUDE flown and FOCAL LENGTH of lens (in all aerial photos).

OFFICIAL U. S. NAVY PHOTOGRAPH.

Mitsubishi Heavy Industry, Kobe Japan.

Negative 6 through 10
(complete)

CALVIN

5



Photo 1 - Typical
roof construction
in Bldg 1, showing
details in roof
which has not been
disturbed by bomb-
ing.



Photo 2 - Roof construction in Bldg 1, showing bare trusses where roof
covering and glass have been completely removed.

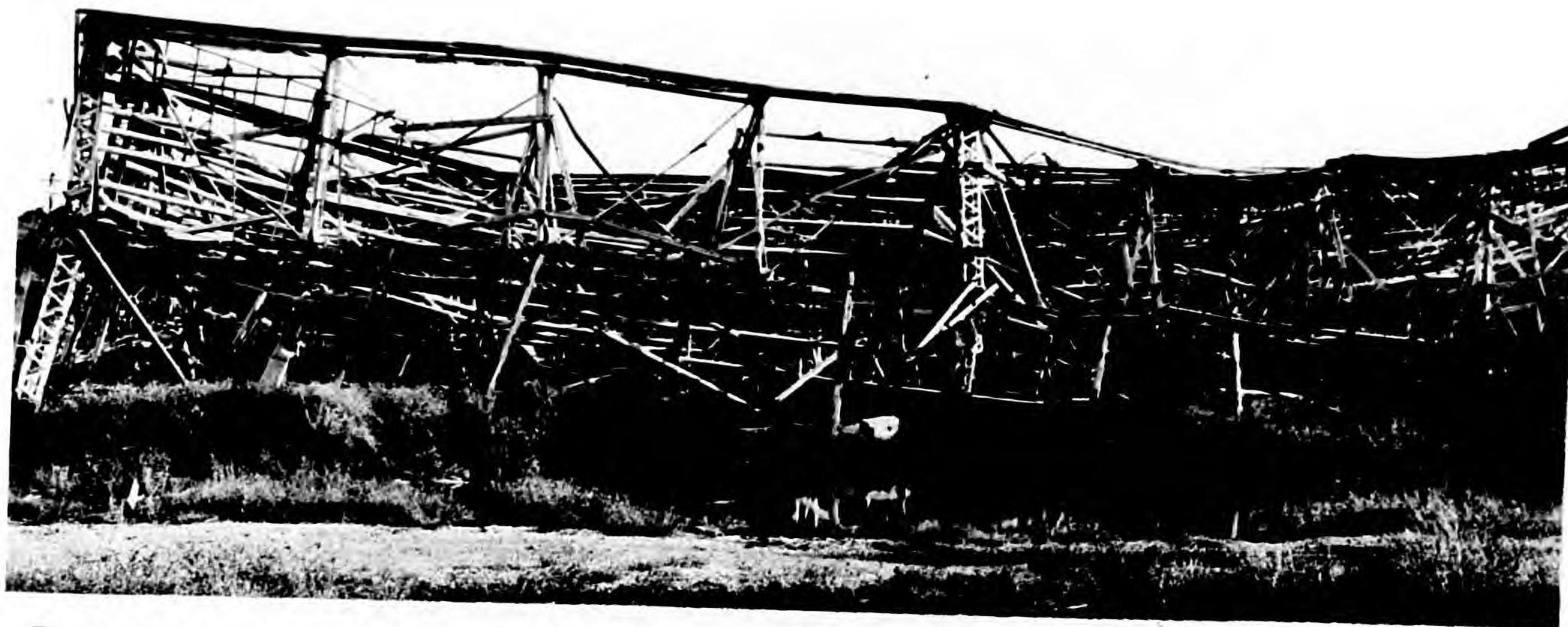


Photo 3 - General view of NE corner of Bldg 1 showing damage inflicted by Bombs 8 and 9, craters of which may be seen in the foreground.



Photo 4 - Damage from Bomb 11 (foreground), a direct hit, and Bomb 10 (background), a near miss. This portion of Bldg 1 was destroyed.



Photo 5 - Collapse of the shop roof occasioned by the direct hit of Bomb 12. This damage was increased by effects of Bombs 10 and 11, which detonated to the right of the picture.

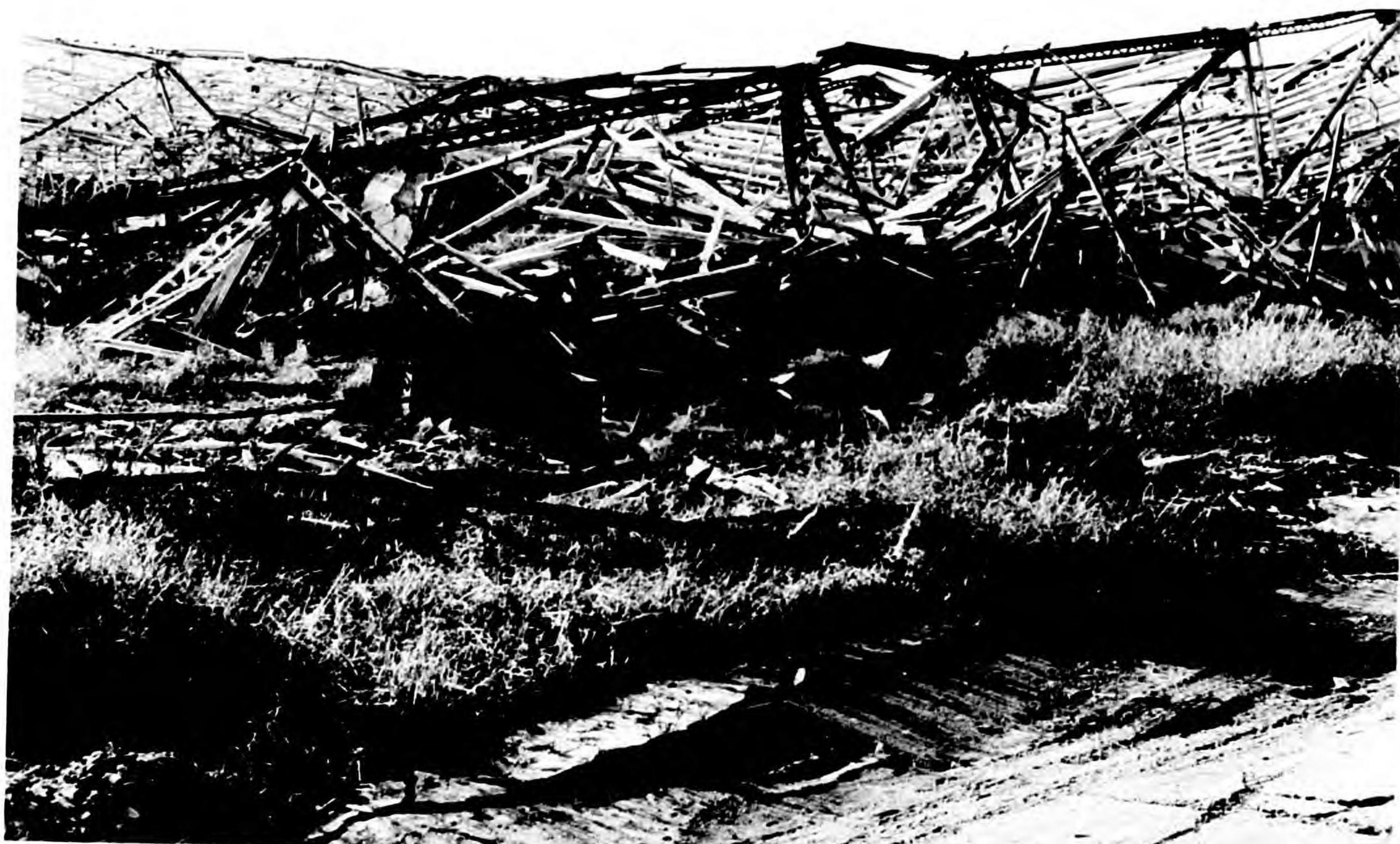


Photo 6 - General view of the effects of Bombs 10, 11 and 12, showing complete collapse of the building at this point.



Photo 7 - In the foreground, tangled wreckage caused by Bomb 12. In the background, damage caused by Bombs 8 and 9.



Photo 8 - Roof damage caused by Bomb 15. Structural damage was minor compared to that caused by bombs which detonated at ground level.

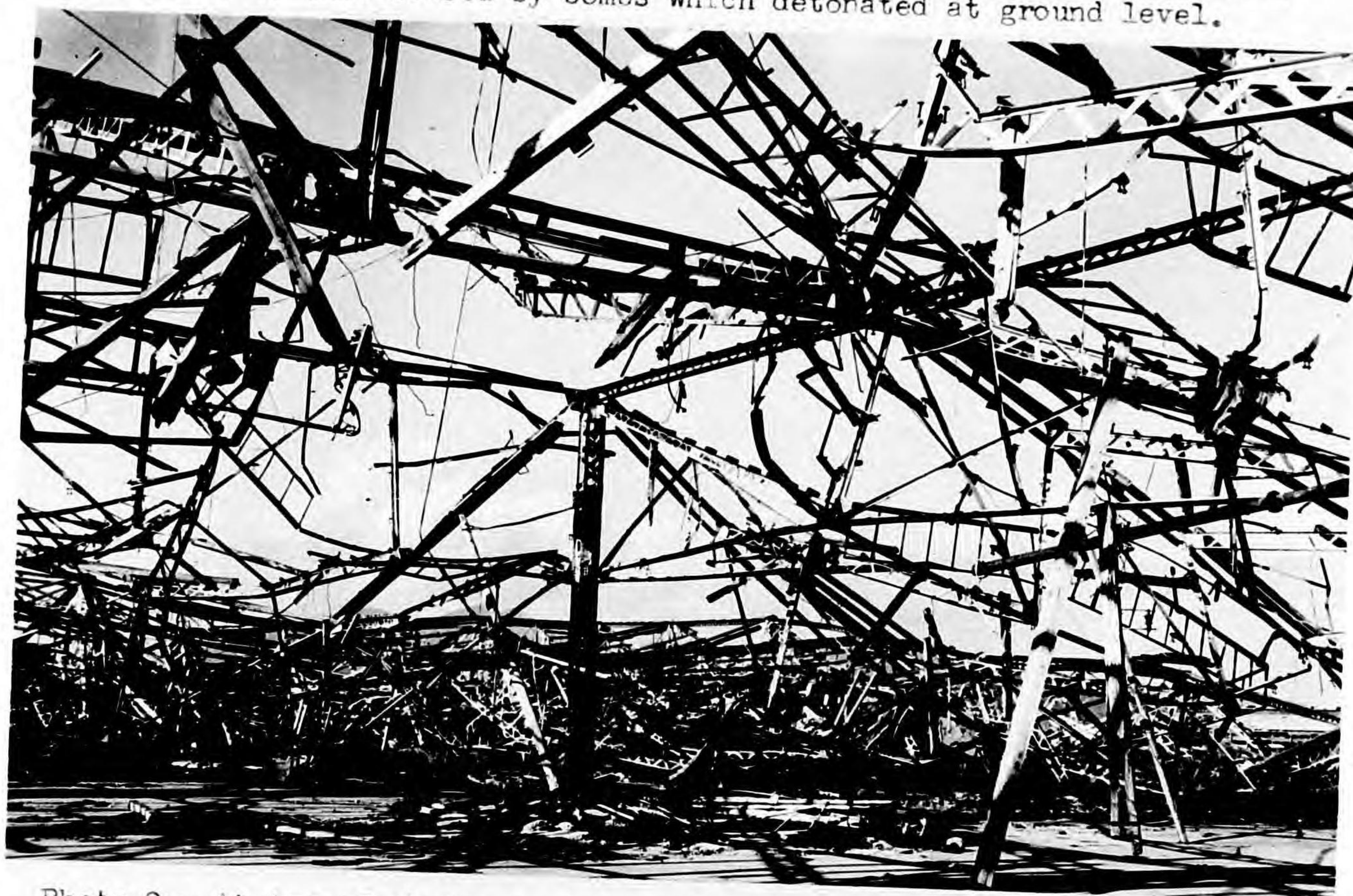


Photo 9 - At top of photo, a view of the collapsed roof and superficial damage caused by Bomb 15. Damage in background was caused by Bombs 11 and 12.

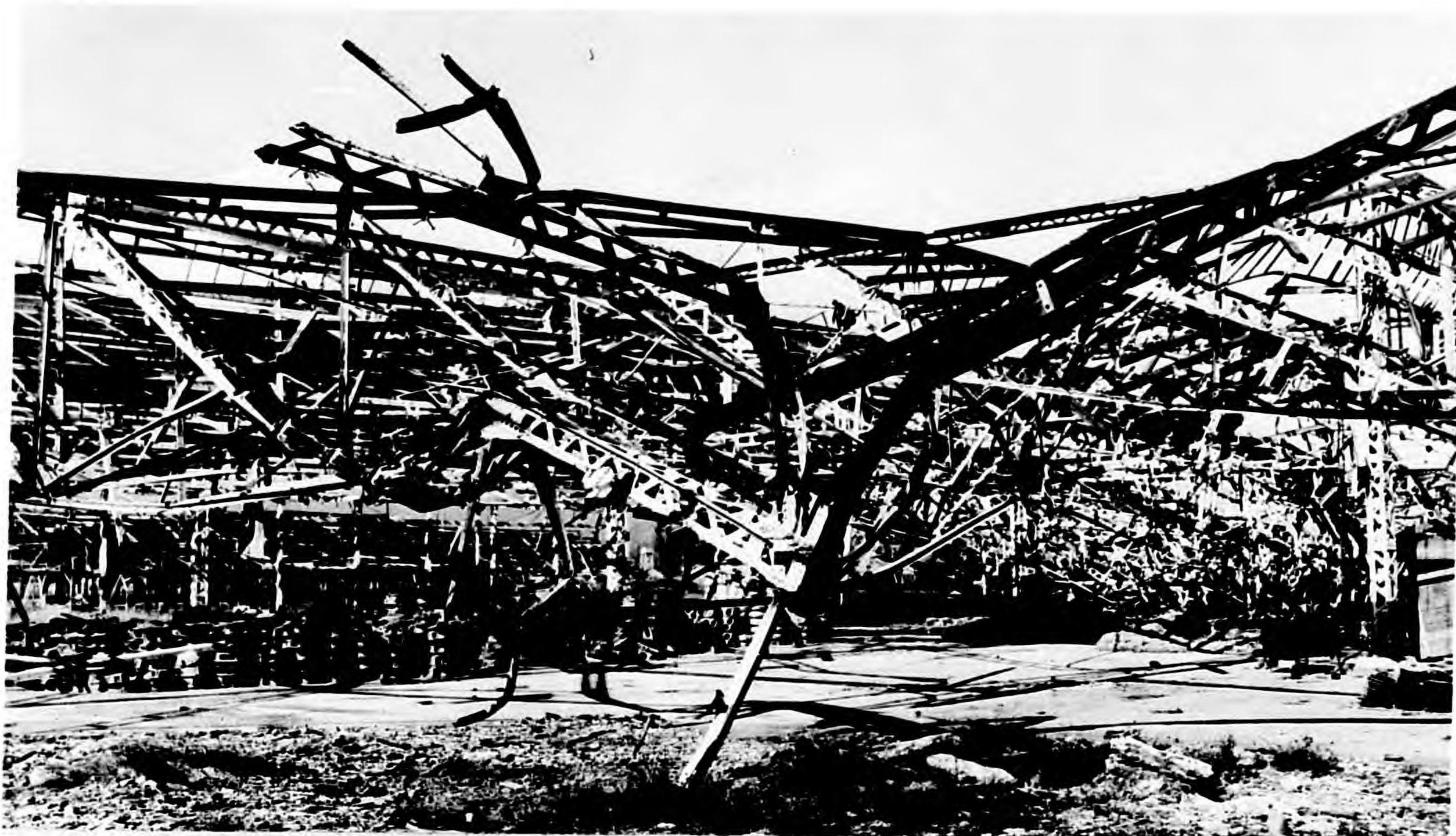


Photo 10 - Superficial damage (at top of building) was caused by Bomb 13 which exploded in the roof. The crater at the bottom of the picture, as well as most of the other damage shown, was caused by Bomb 14.

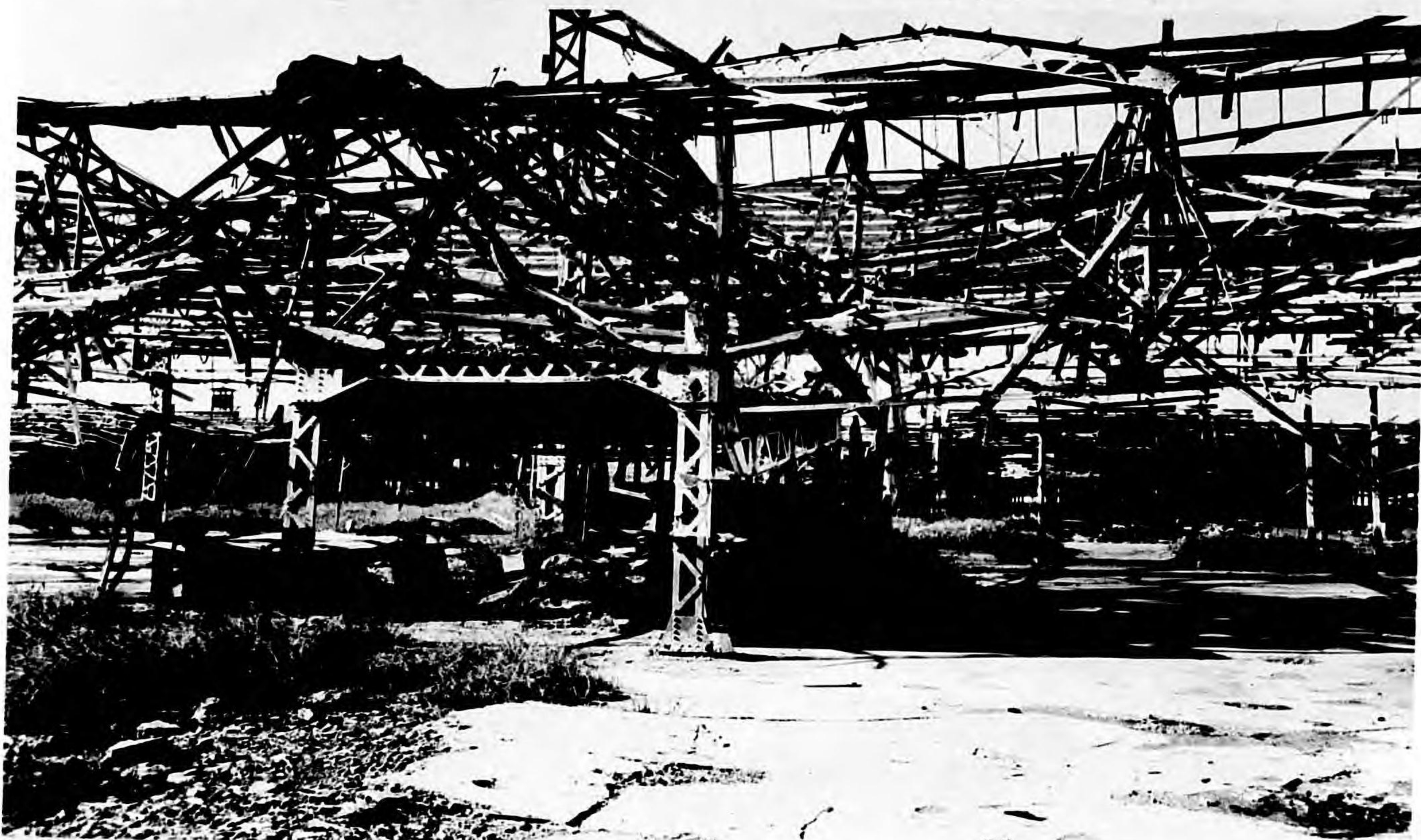


Photo 11 - Structural damage caused by Bomb 14. Column 3-F (left center photo) was sheared approximately two feet above floor level. The column was thrown in an arc of 270 degrees, up and over a transformer stand.



Photo 12 - A general view of the complete collapse of the shop structure caused by Bombs 16, 17, and 18.



Photo 13 - In the foreground is Column 11-D, showing the effect of earth shock, blast and strain on a typical supporting column.



Photo 14 - In the foreground is Column 12-F sheared at the base by Bomb 18 and pushed over, causing partial collapse of the roof.



Photo 15 - Column 12-E shows the effect of earth shock and shifting of column footing as the column failed under compression.



Photo 16 - In the center foreground is the footing of Column 11-E, upturned by Bomb 18, indicating the disruptive effect of this bomb. The background shows more of the overall damage effect of Bombs 16, 17, and 18.

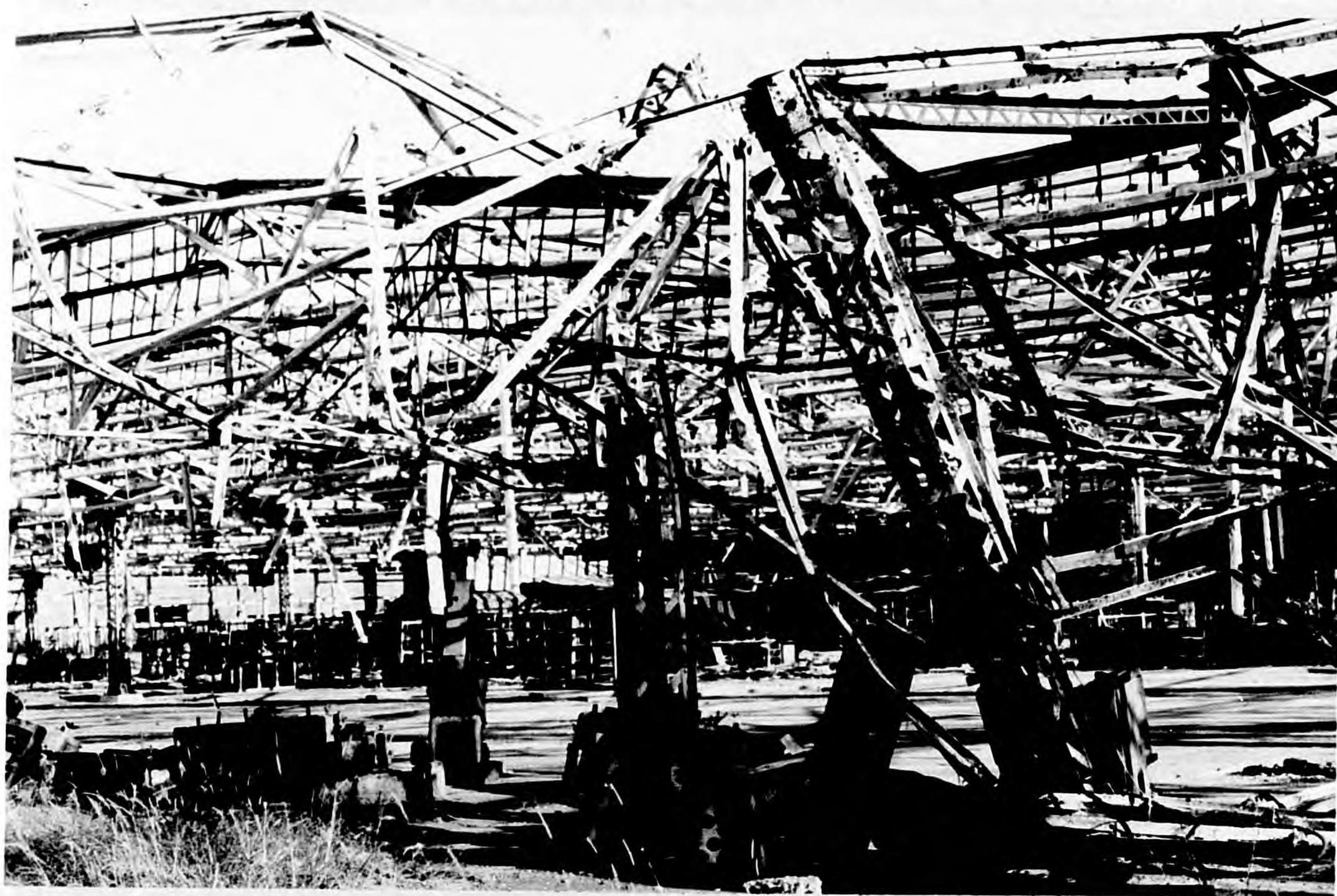


Photo 17 - Column 13-I, sheared in the center and blown to one side by Bomb 19, contributing to a great extent to the general roof collapse.

Photo 18 - Detail of failure of Column 10-F which was sheared approximately 4 inches from its base and shattered into scrap.



Photo 19 - A partial view of damage caused by Bombs 16 and 17. Weeds and grass tend to obscure craters and detail of damage at crater level.

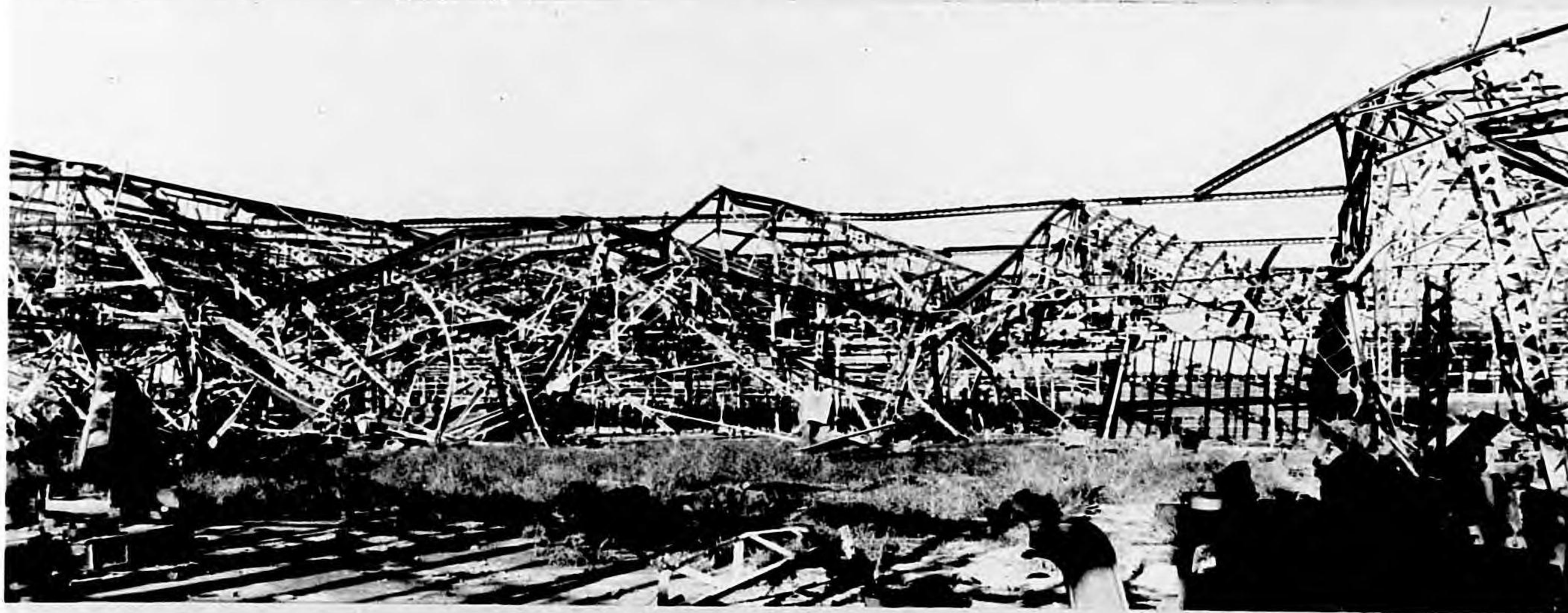
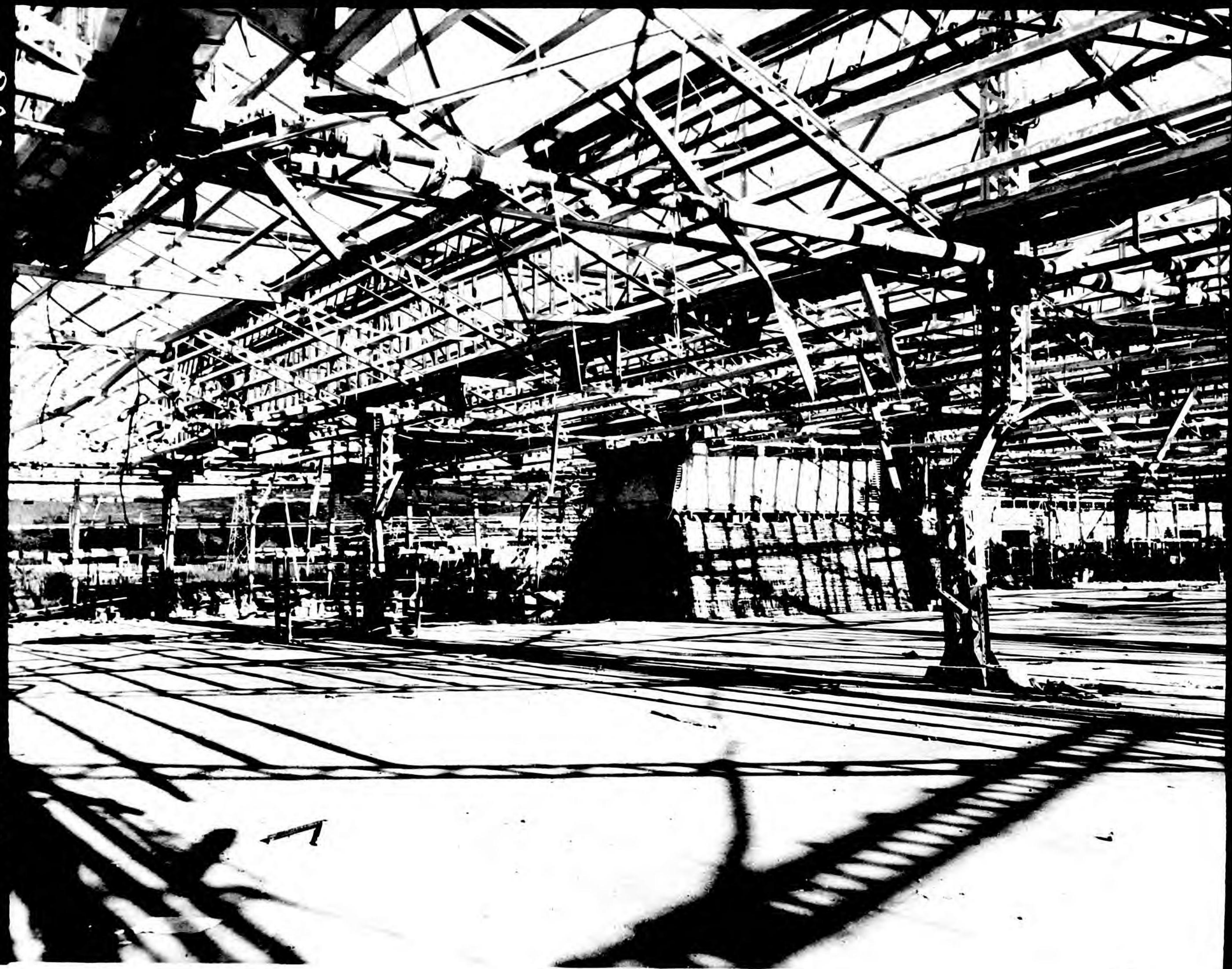


Photo 20 - Damage caused by Bomb 19, indicating very clearly the effect of a well placed, correctly fuzed bomb. The entire roof structure collapsed, and the strain of this collapse extended well into the remaining structure.



Photo 21 - A detail of Columns 10-J, 10-K and 10-L, showing how the collapse of the roof structure caused by Bomb 19, which detonated out of the picture to the right, racked the structural members and pulled these columns toward the collapsed section. Although not damaged directly by blast, these columns are useless as load-bearing members.

PDD 220
8-5-49



SHIZUOKA

PDD No.	REPORT	Photo No	Description.
✓ 2-2-9	✓ 5x7	1	View of typical construction, with roof.
✓ 2-1-9	✓ 5x7	2	
✓ 2-2-12	5x7	3	Gen. view of damage & craters of Bombs #849
✓ 2-1-6	✓ 5x7	4	
✓ 2-2-11	✓ 7x9	6	Gen. view of damage & craters of #10, 11, & 12
✓ 2-1-5	✓ 5x7	5	Crater & dam. of #12
✓ 2-1-4	✓ 5x7	7	Dam. of #12 in foreground, #849 in background.
✓ 2-1-7	✓ 5x7	8	Air burst #15
✓ 2-1-8	✓ 5x7	9	" " "
✓ 2-1-3	✓ 5x7	10	Roof shows air burst #13 + dam. by #14
✓ 2-1-1	✓ 5x7	11	Bombs 13 & 14 showing Col. #3F ^{180° & laying on roof.} tossed in air, awaiting
✓ 2-2-1	✓ 5x7	12	Gen. view damage of #16, 17, & 18
✓ 2-2-2	OK 4x5	13	Detail col. 11 D
✓ 2-2-3	OK 4x5	14	Bomb. 18 Col. 12 F
✓ 2-2-4	✓ 7x9	15	Det. Col. 12 E
✓ 2-2-5	✓ 7x9	16	" footing Col. 11 E
✓ 2-2-6	✓ 7x9	17	" Col. 13 F
✓ 2-1-11	✓ 5x7	18	" Col. 10 F
✓ 2-1-10	✓ 5x7	19	Gen. damage bombs. 16 & 17
✓ 2-2-7	✓ 5x7	20	Bomb. #19
✓ 2-2-8	✓ 7x9	21	Columns #12 J, K, L, by bomb. 19

To. FROM
G-2 Library P.D. TEAM #6
Capt. Brooke

Request 1 print of following
pictures be sent to Team #6
Psy. Dem. Div. Room 2033:

Received →
Requested 3 additional
copies of each on Feb. 11.
G.

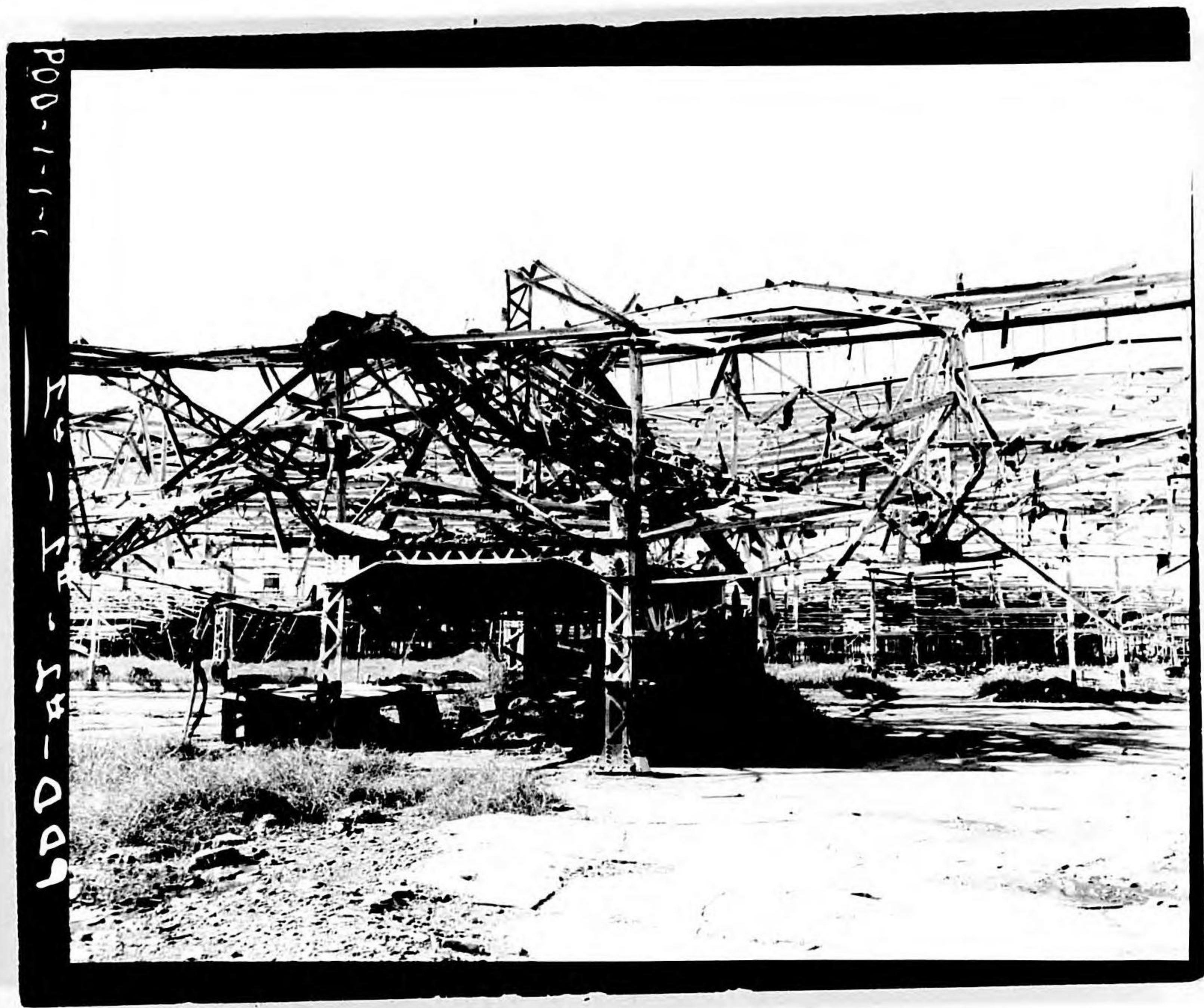
PHOTO No	SIZE
P.D.D 2-2-9	5x7
" 2-1-9	5x7
" 2-2-12	5x7
" 2-1-6	5x7
" 2-2-11	7x9
" 2-1-5	5x7
" 2-1-4	5x7
" 2-1-7	5x7
" 2-1-8	5x7
" 2-1-3	5x7
" 2-1-1	5x7
" 2-2-1	5x7
" 2-2-2	4x5
" 2-2-3	4x5
" 2-2-4	7x9
" 2-2-5	7x9
" 2-2-6	7x9
" 2-1-11	5x7
" 2-1-10	5x9
" 2-2-7	5x7
" 2-2-8	7x9





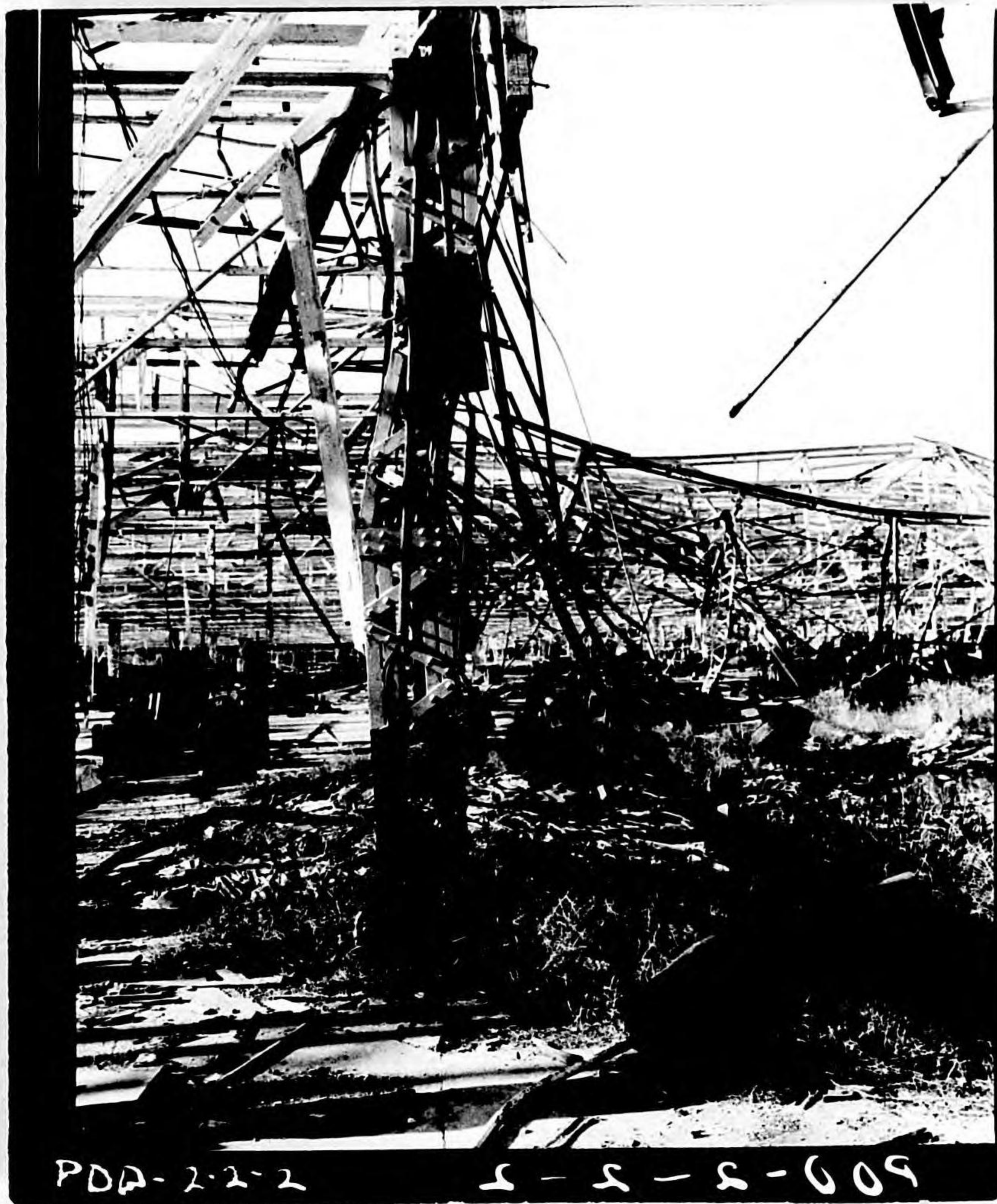








PDA-2-2-1
5-5-5-009



PDA-2-2-2
5-5-5-009













PHOTOGRAPHERS LOG SHEET

Name of Target SHIZUOKA A/C PLANT

Location of Target SHIZUOKA

Team No. VII PDD - Job #2

Date 4 Nov. 45 Team Comdr. Guill

Photographer De Vore Phom 2/c

Neg. No.	Description or Caption
	PACK #1
X1	Showing column # 3F TOSSED IN AIR DESCRIBING 180° ANGLE + Laying ON ROOF - BOMB # 2.
NEG 2	CRATER #2 - NE
X3	COLUMN 3F - OVERTURNED BY AIRBLAST.
X4	Blank
X4	View of damage by Bomb #1.
X5	Column 3rd & Crater # 3
X6	Crater #4 & 5
X7	DAMAGE BY AIR BURST. BOMB #6.
X8	GEN. DESTRUCTION LOOKING NE FROM COL. 5-I
X9	TYPICAL TRUSS CONSTRUCTION
10	CRATER #7 & 8
11	DETAIL SHOT OF COLUMN # 10F

PHOTOGRAPHERS LOG SHEET

Name of Target SHIZUOKA A/C PLANT

Location of Target SHIZUOKA

Team No. VI PDD Job #2

Date 4 Nov. 45 Team Comdr. Guill

Photographer De Vore Phom 2/c

Neg. No.	Description or Caption
	PACK #2
2-1	General view CRATER # 7-8-9
2-2	Detail SHOT COL. 11-D
2-3	General view of Col. 11-E
2-4	Detail " of Col. 12-E
2-5	Detail of Col. Footing 11-E 11-E
2-6	Detail of Col. 13-F
2-7	Gen. view of CRATER #10
2-8	View of Twisted Col. 12- I, J, K, L.
2-9	General view of Assembly Bldg.
2-10	General view of Wooden Bldg, taken from east side
2-11	view of CRATER # 3, 4, 25
2-12	CRATER #1



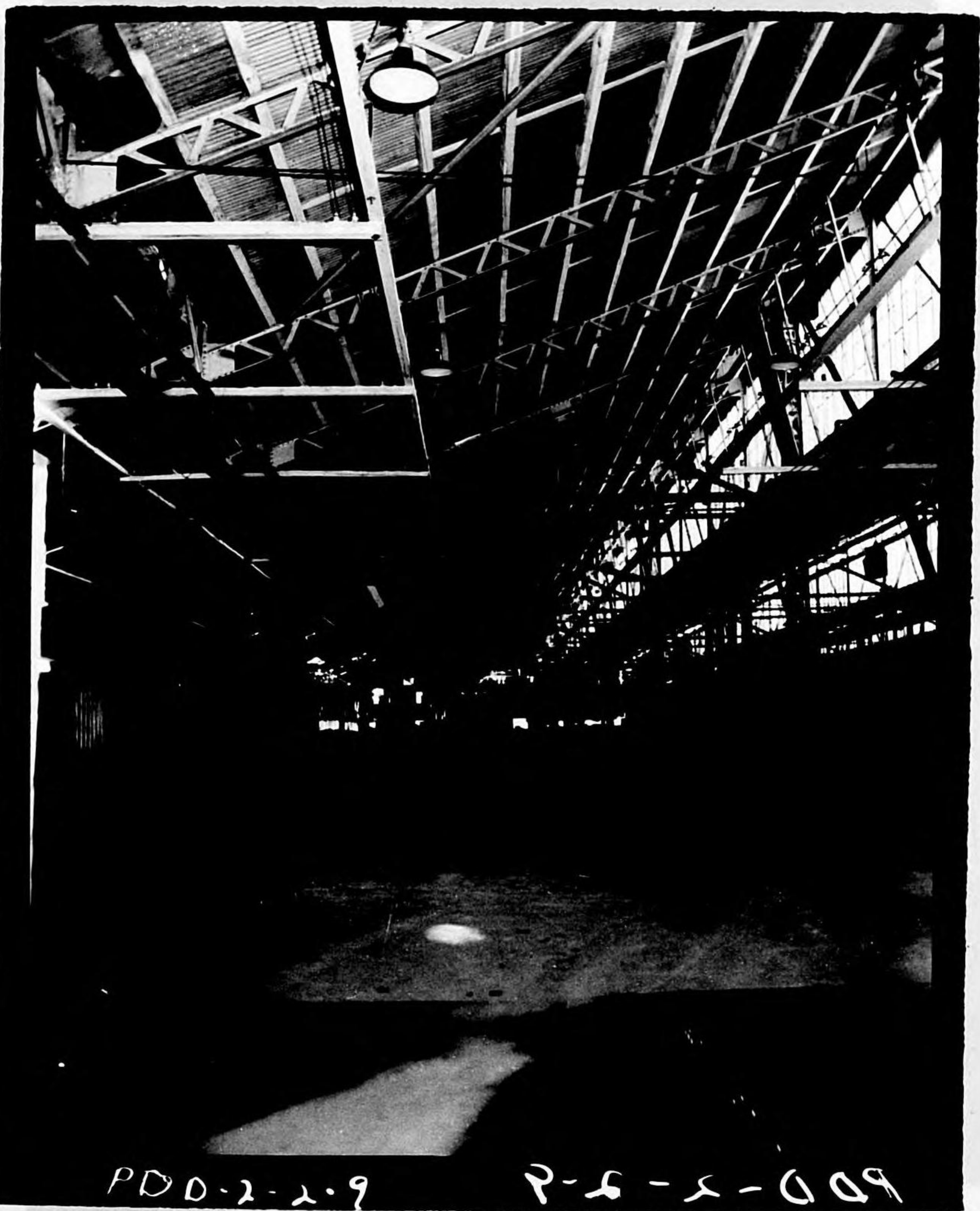
P00-22-6
01-5-5-005



P00-22-6
01-5-5-005



600-5-5-11 117-2-002



PD0-2-2-9

P-6-2-009







PDD-2-2-4 4-5-5-009



PDD-2-2-3 8-2-5-009



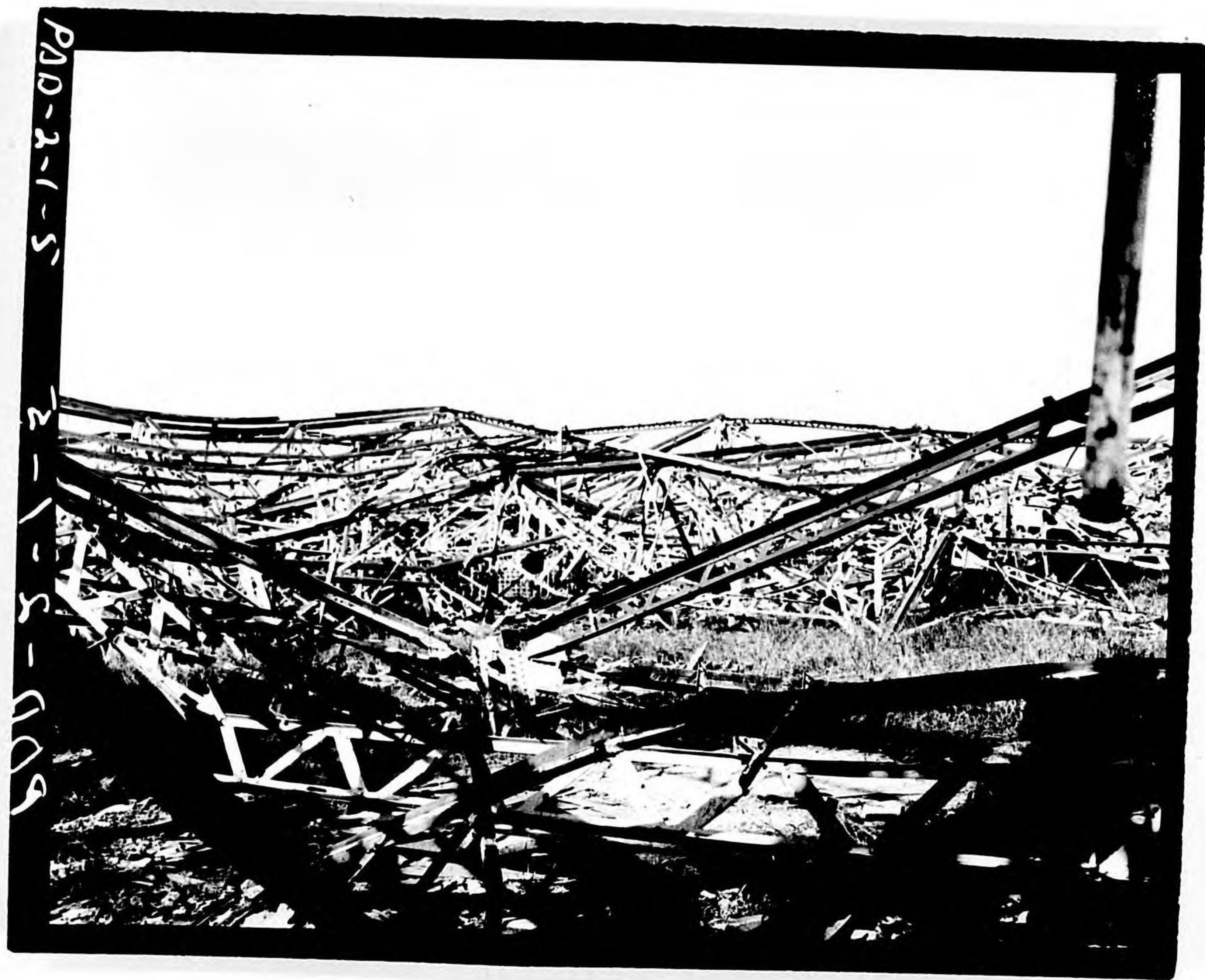
PDA-2-2-2 5-5-5-009



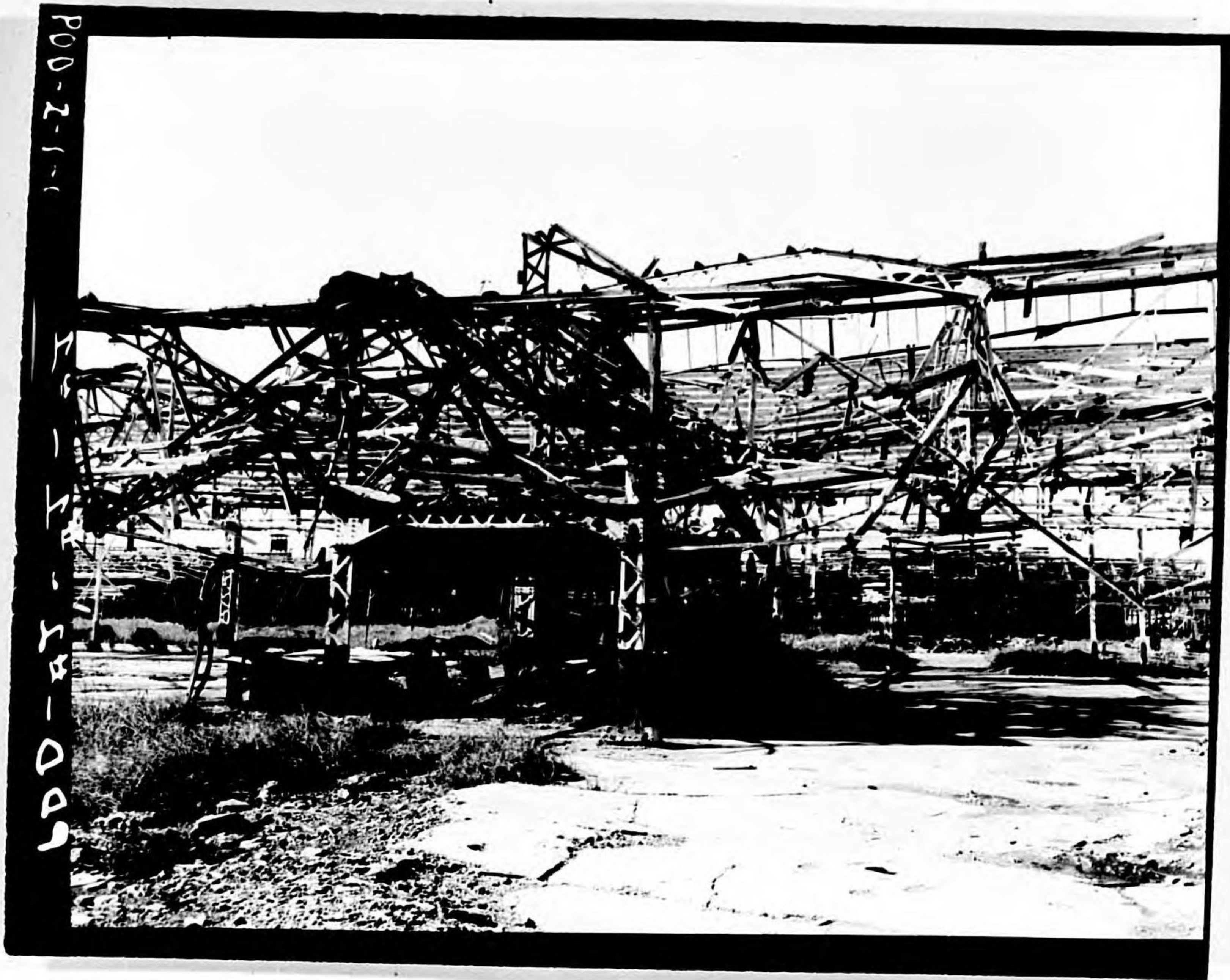
PDA-2-2-1 1-5-5-009

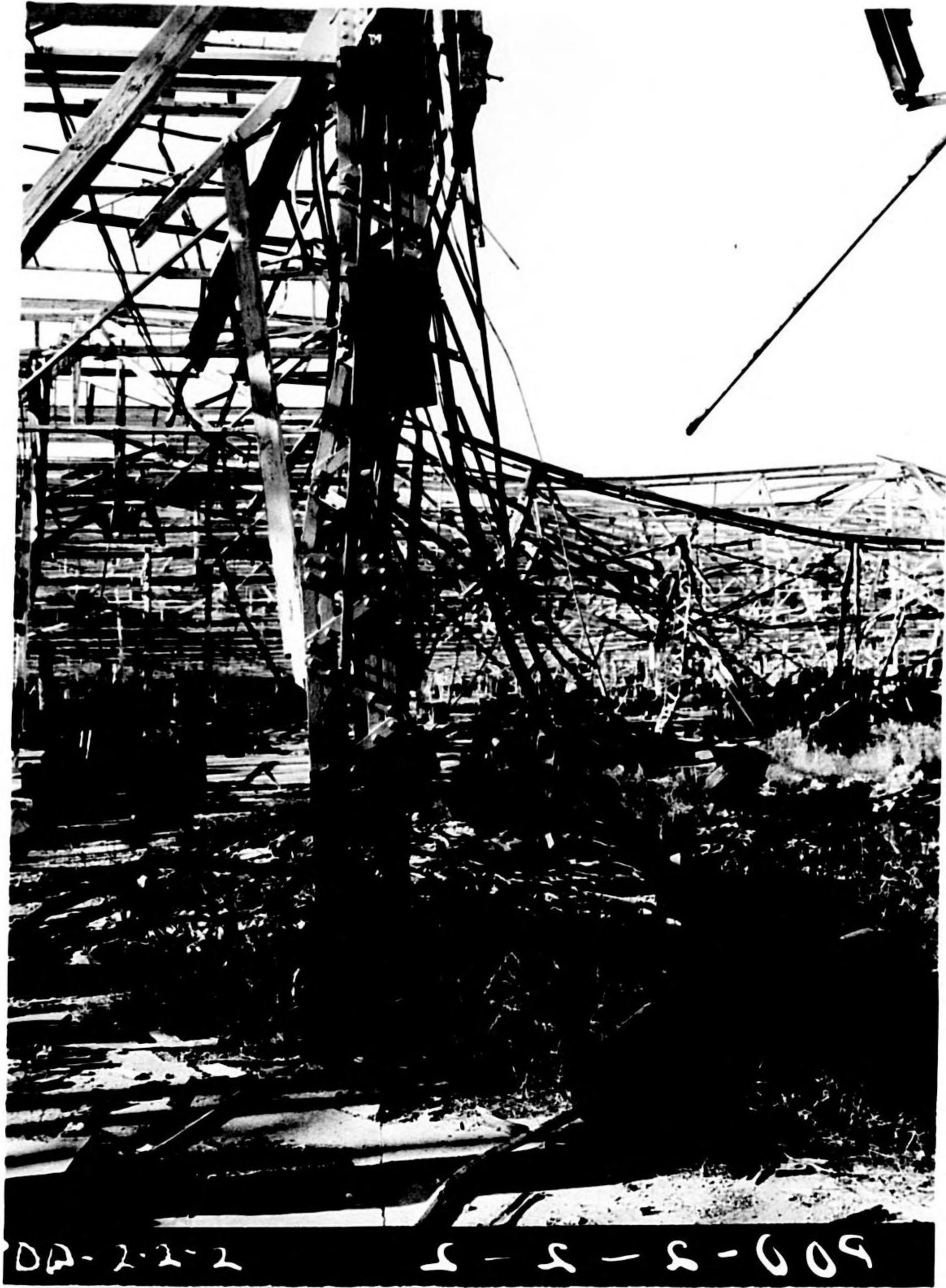












SHIZUOKA

Unit.....No.....

Date Taken.....

Where Taken.....

GIVE COMPLETE STORY OF PICTURE

Include following where applicable:
NAMES, with initials or first names, rank and hometown;
DETAILS of occasion or action; ALTITUDE flown and
FOCAL LENGTH of lens (in all aerial photos).

OFFICIAL U. S. NAVY PHOTOGRAPH

SHIZUOKA

SHIZUOKA A/c Engine Wks
Extra Photos + Prints
SHIZUOKA, Japan

~~14/5~~

~~DO NOT FILM NEGATIVES~~



95b Doc (6)