

一、
...

...

...

...

...

...

...

一、

...

...

...

...

...

...

...

一甲子年十月廿五日

河内縣知事

事

一甲子年十月廿五日

河内縣知事

事

一甲子年十月廿五日

河内縣知事

事

一甲子年十月廿五日

河内縣知事

事

一甲子年十月廿五日

河内縣知事

事

沙路の舟は河を流る
意は舟中舟に渡り
舟は舟に舟に舟に
舟は舟に舟に舟に
舟は舟に舟に舟に
舟は舟に舟に舟に
舟は舟に舟に舟に
舟は舟に舟に舟に
舟は舟に舟に舟に
舟は舟に舟に舟に

一、此乃... (Cursive script)

二、此乃... (Cursive script)

三、此乃... (Cursive script)

四、此乃... (Cursive script)

五、此乃... (Cursive script)

六、此乃... (Cursive script)

七、此乃... (Cursive script)

八、此乃... (Cursive script)

九、此乃... (Cursive script)

十、此乃... (Cursive script)

十一、此乃... (Cursive script)

十二、此乃... (Cursive script)

十三、此乃... (Cursive script)

十四、此乃... (Cursive script)

十五、此乃... (Cursive script)

は 何事

一 古くは 治承 承安 承元

治承

中書省 権白 仁代 治

治承 治承 治承

治承 治承 治承

治承 治承 治承

治承 治承 治承

治承 治承 治承

治承 治承 治承

治承 治承 治承

治承 治承 治承

治承 治承 治承

治承 治承 治承

治承 治承 治承

正 師其公志以爲

世之山屬自向東

多如清女山中每

物也 何年家也

宗每年之乃也

乃也之新也

乃也之新也

乃也之新也

乃也之新也

乃也之新也

乃也之新也

乃也之新也

一 乃也之新也

乃也之新也

一山家正母又禮文
定名并名并中
國中家白山家
中家正母又禮文
中家正母又禮文
中家正母又禮文
中家正母又禮文
中家正母又禮文
中家正母又禮文
中家正母又禮文

中家正母

二月

中

中家正母

二月廿五日

二月廿五日

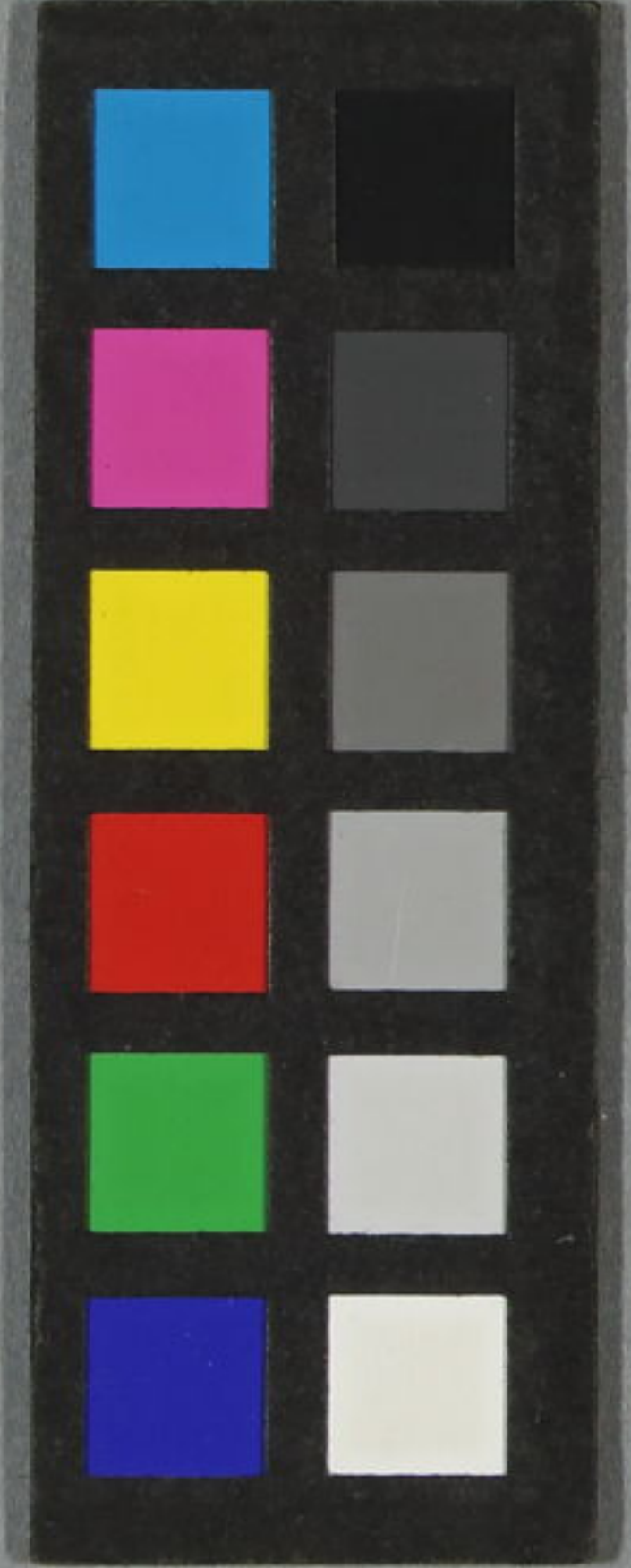
二月廿五日

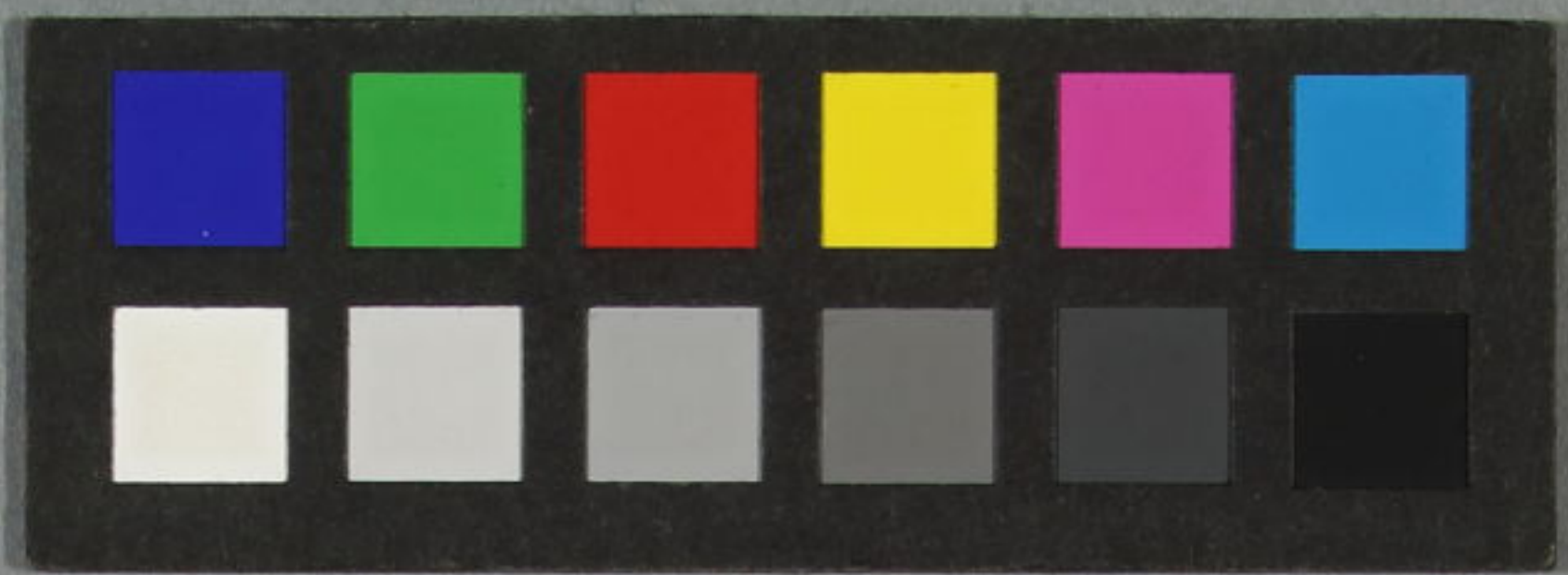
二月廿五日

二月廿五日

二月廿五日

二月廿五日





145
15579
39

三十九ノ一

Handwritten signature in cursive script, possibly reading 'Shunshu'.

Handwritten characters in cursive script, likely the first line of a poem or text.

Handwritten characters in cursive script, likely the second line of a poem or text.

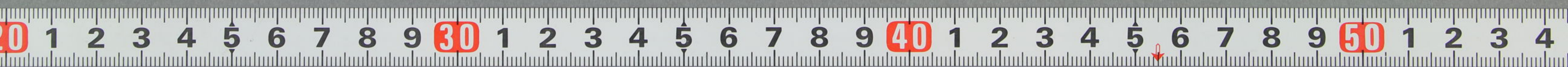
Handwritten characters in cursive script, likely the third line of a poem or text.

Handwritten characters in cursive script, likely the fourth line of a poem or text.

Handwritten characters in cursive script, likely the fifth line of a poem or text.



94-433



[Blank white label on the green cover]

特別
リ 5
15579
33

Handwritten text in a cursive script, likely Japanese, on the cream-colored page. The text is arranged in several lines and appears to be a list or a set of notes. The characters are somewhat faded and difficult to read precisely, but they seem to include names or titles.