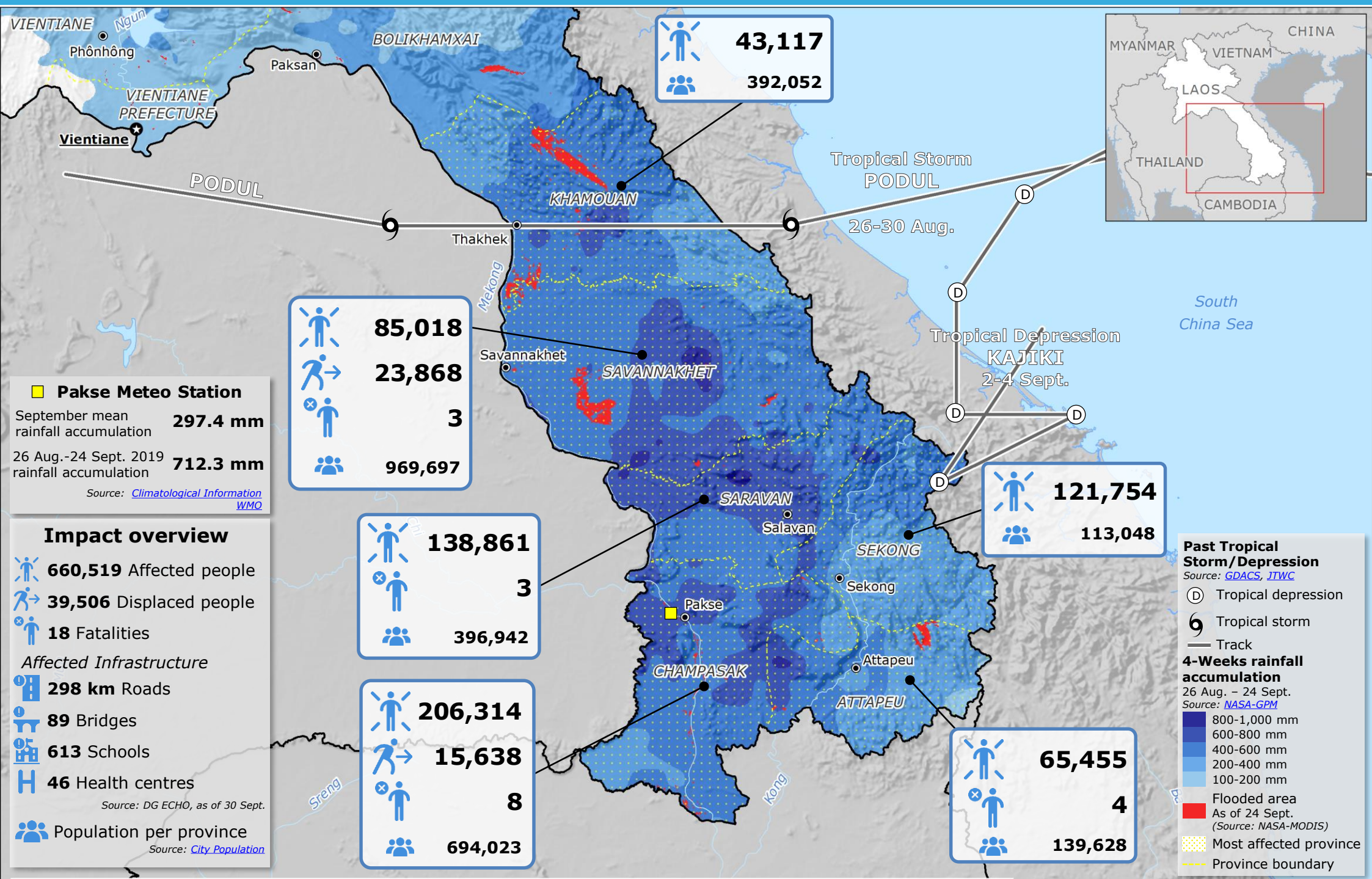


Laos | Floods - People in Need



43,117
392,052

85,018
23,868
3
969,697

138,861
3
396,942

206,314
15,638
8
694,023

121,754
113,048

65,455
4
139,628

Pakse Meteo Station
September mean rainfall accumulation **297.4 mm**
26 Aug.-24 Sept. 2019 rainfall accumulation **712.3 mm**
Source: Climatological Information WMO

Impact overview
660,519 Affected people
39,506 Displaced people
18 Fatalities
Affected Infrastructure
298 km Roads
89 Bridges
613 Schools
46 Health centres
Source: DG ECHO, as of 30 Sept.
Population per province
Source: City Population

Past Tropical Storm/Depression
Source: GDACS, JTWC
Ⓧ Tropical depression
Ⓣ Tropical storm
— Track
4-Weeks rainfall accumulation
26 Aug. – 24 Sept.
Source: NASA-GPM
800-1,000 mm
600-800 mm
400-600 mm
200-400 mm
100-200 mm
Flooded area
As of 24 Sept.
(Source: NASA-MODIS)
Most affected province
Province boundary