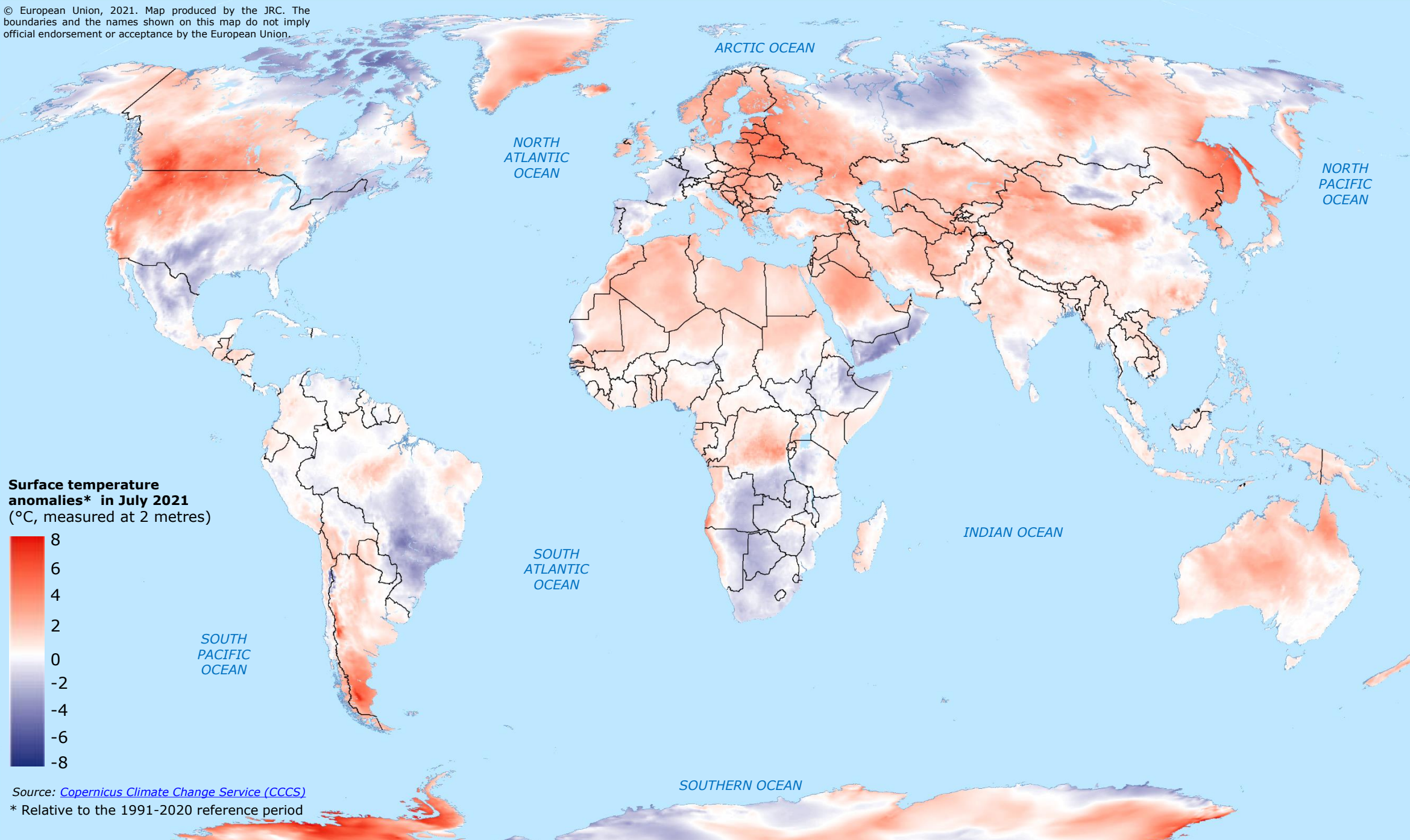


World | Temperature Anomalies in July 2021

© European Union, 2021. Map produced by the JRC. The boundaries and the names shown on this map do not imply official endorsement or acceptance by the European Union.



Globally, the average temperature for July 2021 was 0.33°C warmer than the 1991-2020 average for July. This month joins July 2020 as the third warmest July on record, less than 0.1°C cooler than July 2019 and July 2016.

During this month, temperatures were warmer than average over most of northern and eastern Europe. An all-time record for daily maximum temperature was reported in Northern Ireland, as reported by the [UK Met Office](#). Temperatures were much above average over eastern Iceland and parts of eastern Greenland, while heatwave conditions were especially severe in south and south-eastern Europe at the end of July 2021.

Warmer than average conditions extended eastward from Europe across most of Asia (except for north-western Russia, and Tibetan Plateau). Temperatures were also higher than normal over North and central Africa, the Middle-East, most of Australia, and particularly warmer over the western USA, central and western Canada, and Patagonia.

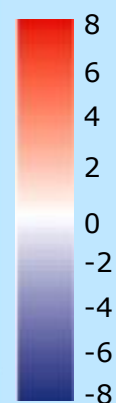
There were several regions of below-average temperatures, especially southern USA, northern Mexico, eastern Canada, the Horn of Africa, Yemen, Oman, southern Brazil, eastern Paraguay, and southern Africa.

Source: [Copernicus Climate Change Service: Surface air temperature for July 2021](#)

Latest additional overview maps on Global temperature anomalies have been produced as DG ECHO Daily Maps, available on the ERCC Daily Map [Portal](#).

¹Positive percentages indicate areas with greater than average ice concentration, whilst negative percentages indicate areas with less than average ice concentration.

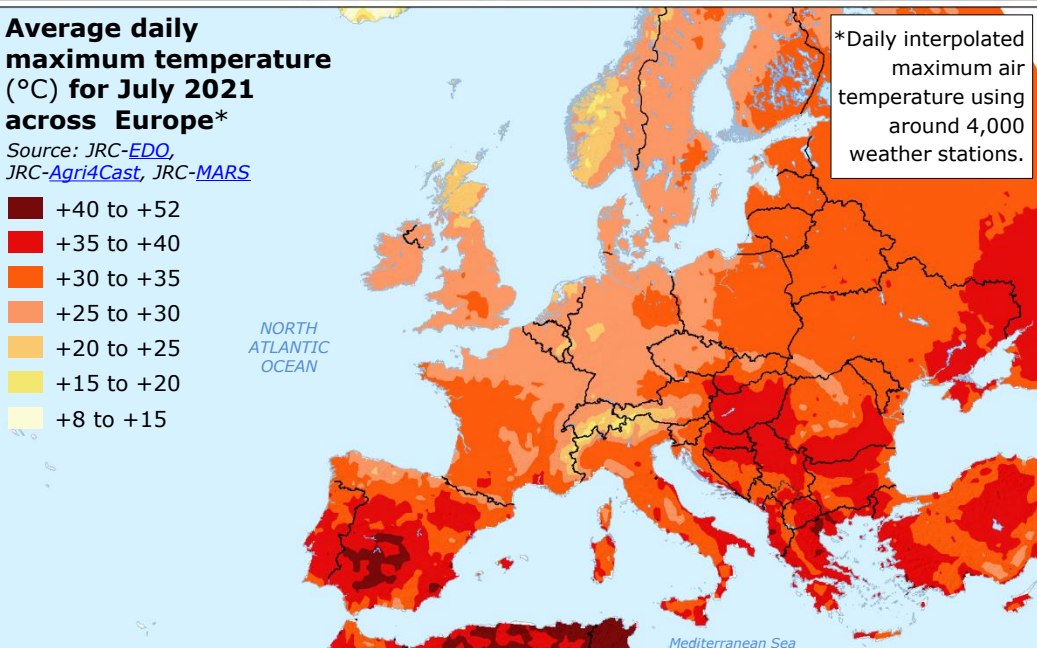
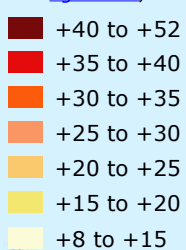
Surface temperature anomalies* in July 2021 (°C, measured at 2 metres)



Source: [Copernicus Climate Change Service \(CCCS\)](#)
* Relative to the 1991-2020 reference period

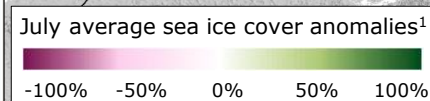
Average daily maximum temperature (°C) for July 2021 across Europe*

Source: [JRC-EDO](#), [JRC-Agri4Cast](#), [JRC-MARS](#)



*Daily interpolated maximum air temperature using around 4,000 weather stations.

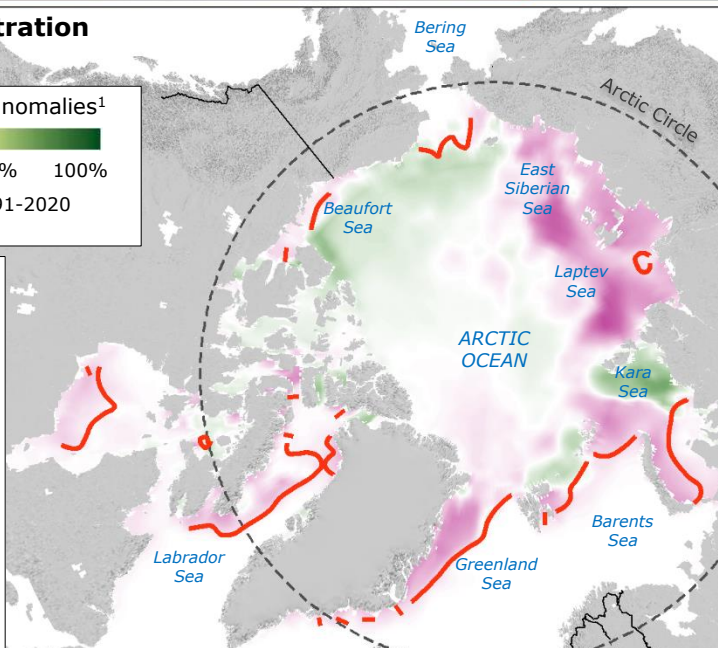
Arctic sea ice concentration in July 2021



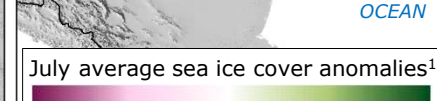
Source: [CCCS sea ice cover](#)

In July 2021, the sea ice extent was 8.5 million km², which was 9% below the 1991-2020 average for July.

After July 2020, this Arctic sea ice extent was the 2nd lowest for July in the CCCS satellite record (starting 1979). Sea ice cover was below average in the Laptev, East Siberian, and Greenland Seas and markedly above average in the eastern Kara Sea.



Antarctic sea ice concentration in July 2021



Source: [CCCS sea ice cover](#)

In July 2021, Antarctic sea ice extent on average reached 16.9 million km² which is approximately 3% above the 1991-2020 average for July.

This is the sixth highest value in the CCCS satellite data record and marks the first positive July anomaly since 2015. Positive anomalies were reported over most of the Southern Ocean, while the largest negative anomalies were mostly concentrated over northern Amundsen and Weddell Seas.

