

特256-22



1200601150057

徳島縣勢一覽

昭和十三年五月刊行



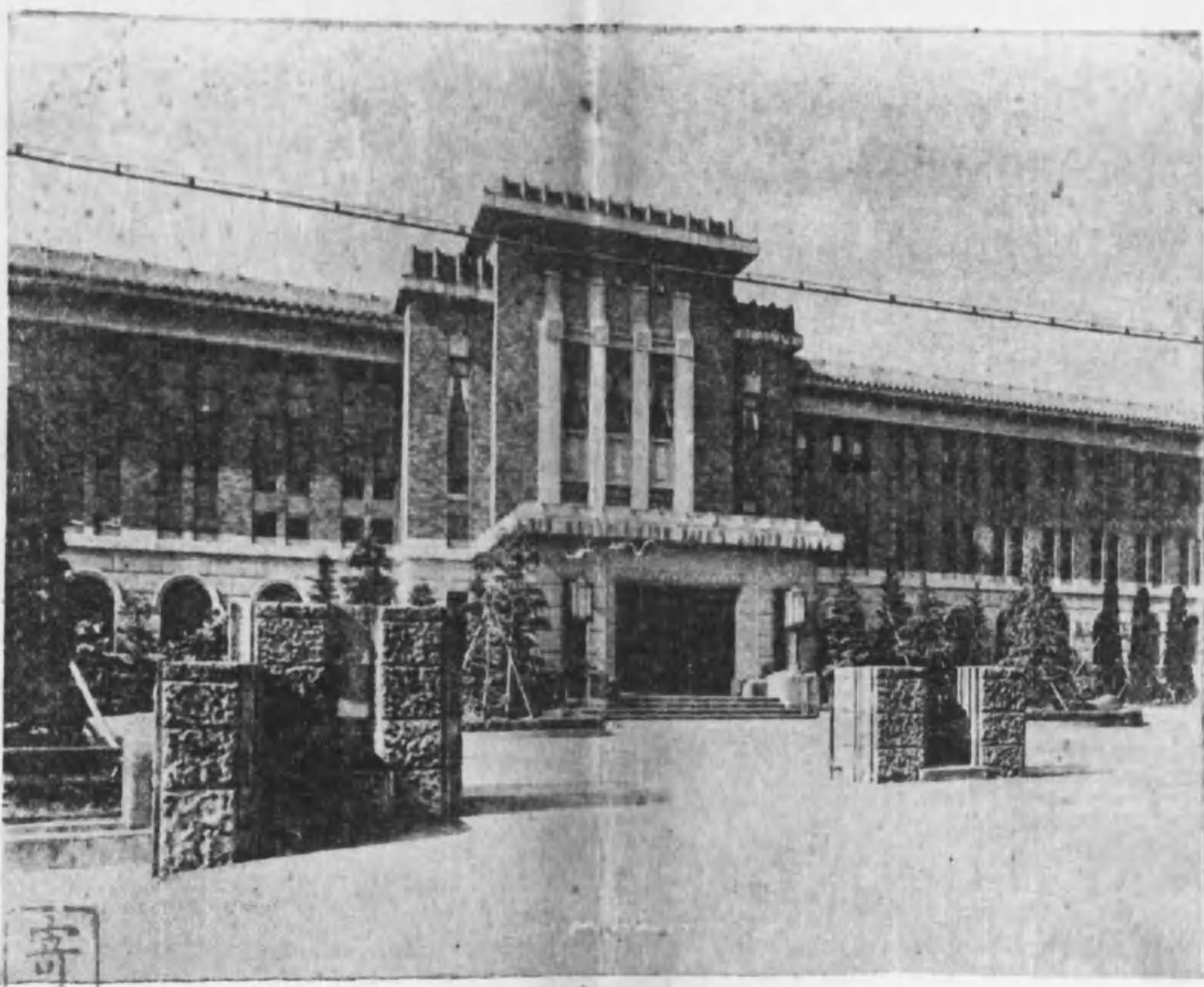
始





(村江縣那野) 縣大津野天門子

4875
52



德島縣廳

寄
院議衆
13.8.30
圖書館



富士の麓 (海部郡川上村)

山

土

注 (河原町村)

新

徳島縣總務部統計課

本表ハ主トシテ昭和十一年中ノ事實又ハ昭和十一年末現在ヲ掲グタルモノナルモ然ラザルモノハニアラハ夫々年號ヲ附記セリ

Table with multiple columns: 財政 (Finance), 警察 (Police), 衛生 (Health), 教育 (Education), 交通及水 (Transportation and Water). It contains detailed financial and administrative data for various departments.

Table with multiple columns: 社會 (Social), 宗教 (Religion), 學 (Education), 交通及水 (Transportation and Water). It contains data on social services, religious institutions, and educational facilities.

Table with multiple columns: 業 (Industry), 社會 (Social), 交通及水 (Transportation and Water). It contains data on various industries and social organizations.

濰島縣地圖



昭和十三年六月七日由良案審判部繪製

濠洲縣地圖





圖街市島嶼



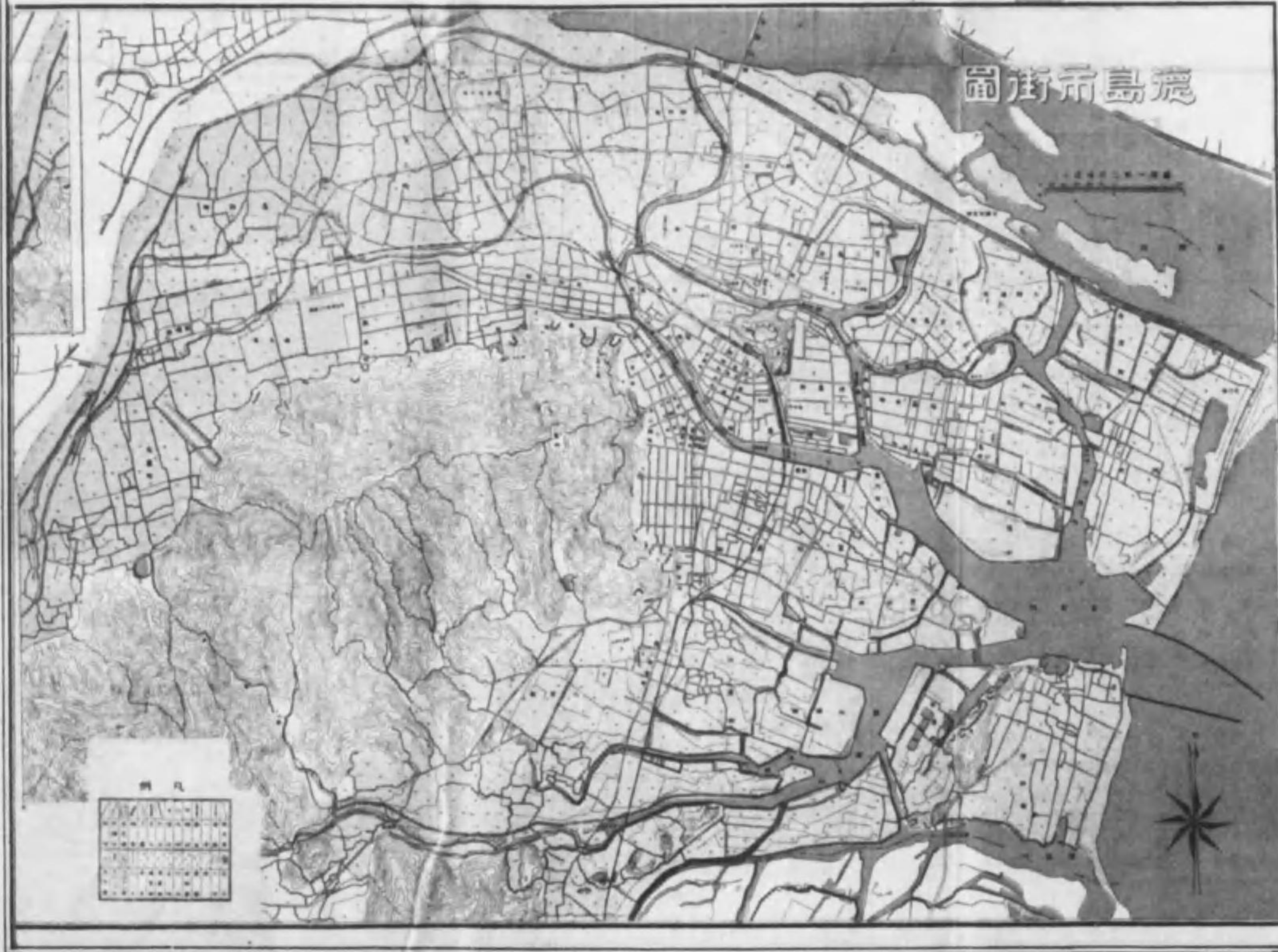
縣 知 高

安 縣

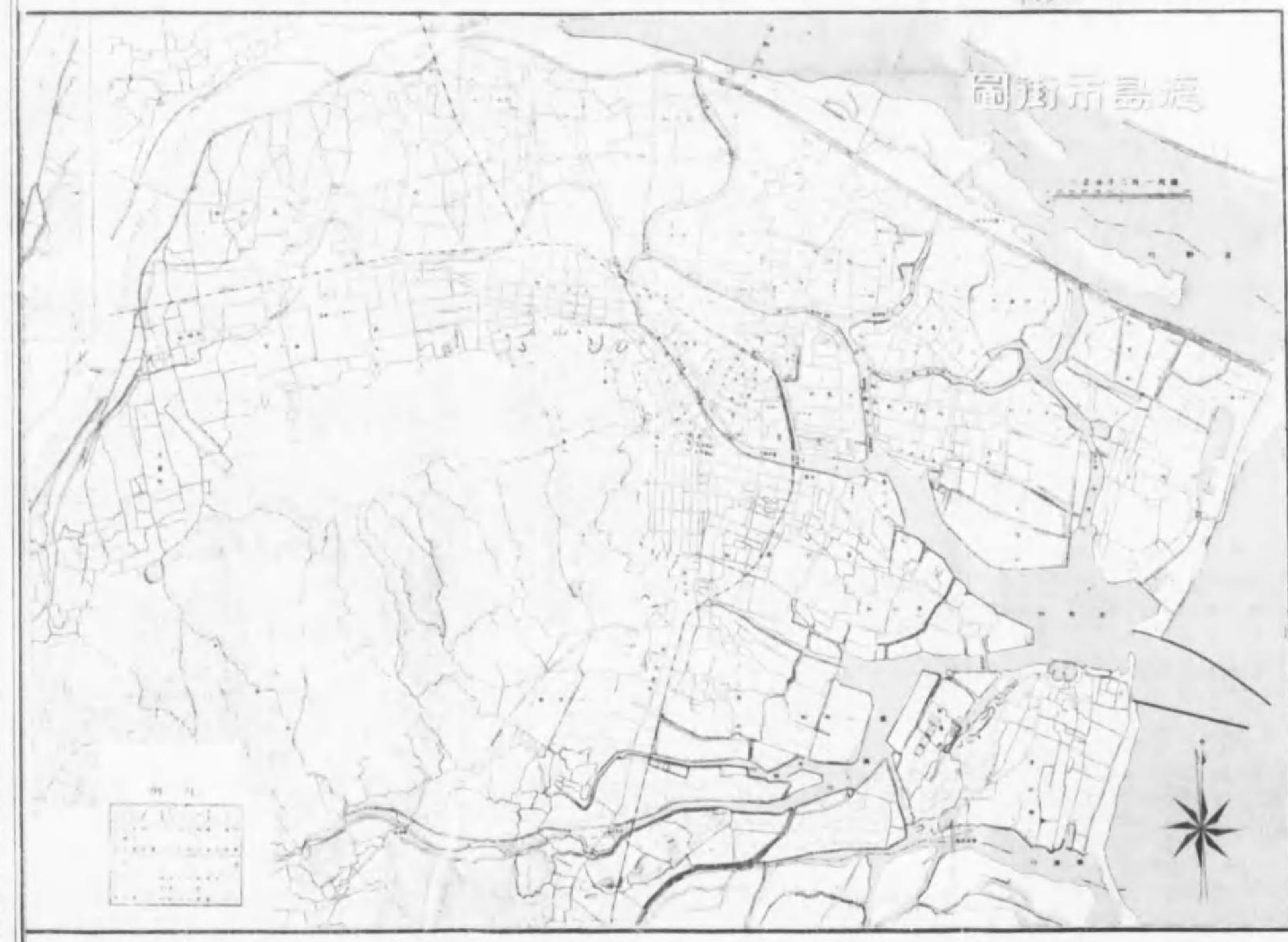
縮尺 1:200 000

Legend table with multiple columns and rows of symbols and text, providing a key for the map's features.

露光量違いの為重複撮影



露光量違いの為重複撮影



須山町



終

