

III a (16)

F/A-153 NAKAJIMA A/C, OJIMA PLANT

9

U.S. CONFIDENTIAL  
(British Confidential)

PHOTO INTELLIGENCE SECTION  
EVALUATION BRANCH  
PHOTOGRAPHIC DIVISION  
AC/AS, INTELLIGENCE

FUNCTIONAL ANALYSIS REPORT NO. F/A-153

Date 8 June 1945

TARGET NO: 90:13-2138  
NAME OF TARGET: NAKAJIMA A/C, OJIMA PLANT  
LOCATION: OJIMA, JAPAN COORDINATES: 36° 15' N - 139° 20' E  
PHOTOGRAPHY: 

<u>Date</u>	<u>Mission</u>	<u>Print Nos.</u>
12 FEB 45	3PR/5M45	2V:45,6
30 MAR 45	3PR/5M109	4R:118-120

1 This report has been prepared from a study of aerial photographs and a consideration of evaluated ground information supplied by the Joint Target Group.

2 FUNCTION

This plant is reported to be making Airframe components for the NAKAJIMA Factories.

3 LOCATION

The OJIMA Plant is located 1 1/2 miles N. of the OTA A/F, which is on the N. bank of the TONE River at the E. side of the town of OJIMA. About 4 miles to the E. of this plant is the KOIZUMI A/F and the OTA and KOIZUMI NAKAJIMA A/C Factories.

4 SERVICES

The plant is served only by highways, however R.R. shipping facilities are available at a R.R. siding 1 1/2 miles N.W. of OJIMA.

5 IDENTIFICATION OF FACILITIES

1a Boiler House  
b Possible press shop  
2a Probable shop or forge  
b S. bay or building under construction  
3 Shop  
4 Shop  
5 Storage  
6 Shop  
7 Shop  
8 Probable storage  
9 Probable storage (b-Removed between above sorties)  
10 Probable storage  
11 Administrative offices  
12 Probable storage  
13 Not identified  
14 Not identified  
15 Shop  
16 Shop  
17 Shop  
18 Water Tower  
19 Boiler house

5 IDENTIFICATION OF FACILITIES (Cont'd)

20 Probable storage  
 21,22 Storage  
 23 Assembly building  
 24 Components erection  
 25 Components erection  
 26 Final assembly  
 27 Storage building in revettment  
 28 Revettment  
 29 Probable quarters  
 30 Probable quarters  
 31 Probable quarters

6 DISCUSSION

The facilities of the plant are suitable for major airframe components manufacturing and erection. It is presumed that these are transported by road to other NAKAJIMA factories, components may <sup>also be</sup> taken to the nearby OTA A/F use of repair and modifications.

7 ACTIVITY

No useful statement as to activity can be made as no identifiable finished products can be seen. A large number of personnel shelters are seen in the compound indicating a considerable number of workers.

ENCL: CFL-750.090

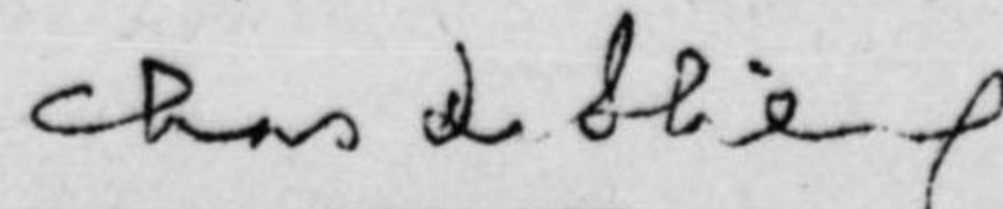
INTERPRETED BY:

A.L. GANUNG  
Maj. AC

JTG CONSULTANT:

WARREN HILL  
Lieut. USNR

APPROVED BY:

*for*   
 LEE W. KILGORE  
 Major, Air Corps  
 Chief, Evaluation Branch  
 Photographic Division  
 Office of the Asst. Chief of Air Staff,  
 Intelligence



TARGET NO.90:13-2138 NAME NAKAJIMA A/C, OJIMA PLANT

DATE 13 June 45 P/4  
COMPLETED

APPROX. COORD.36°15' N 139°20'E PHOTO DATE 30 Mar 45

SCALE 1/6,000

F/A NO. 153  
CFL 750.090

SORTIE, PRINT NOS. 3PR/5M109-4R:119

CONFIDENTIAL

*was not  
held  
could not  
locate*

*F B(1) component*

U.S. CONFIDENTIAL  
(British Confidential)

PHOTO INTELLIGENCE SECTION  
EVALUATION BRANCH  
PHOTOGRAPHIC DIVISION  
AC/AS, INTELLIGENCE

MIPI 64537

FUNCTIONAL ANALYSIS REPORT NO. F/A-153

Date 8 June 1945

TARGET NO: 90:13-2138

NAME OF TARGET: NAKAJIMA A/C, OJIMA PLANT

LOCATION: OJIMA, JAPAN COORDINATES: 36° 15' N - 139° 20' E

PHOTOGRAPHY:	Date	Mission	Print Nos.
	12 FEB 45	3PR/5M45	2V:45,6
	30 MAR 45	3PR/5M109	4R:118-120

1 This report has been prepared from a study of aerial photographs and a consideration of evaluated ground information supplied by the Joint Target Group.

2 FUNCTION

This plant is reported to be making Airframe components for the NAKAJIMA Factories.

3 LOCATION

The OJIMA Plant is located 1 1/2 miles N. of the OTA A/F, which is on the N. bank of the TONE River at the E. side of the town of OJIMA. About 4 miles to the E. of this plant is the KOIZUMI A/F and the OTA and KOIZUMI NAKAJIMA A/C Factories.

4 SERVICES

The plant is served only by highways, however R.R. shipping facilities are available at a R.R. siding 1 1/2 miles N.W. of OJIMA.

5 IDENTIFICATION OF FACILITIES

- 1a Boiler House
- b Possible press shop
- 2a Probable shop or forge
- b S. bay or building under construction
- 3 Shop
- 4 Shop
- 5 Storage
- 6 Shop
- 7 Shop
- 8 Probable storage
- 9 Probable storage (b-Removed between above sorties)
- 10 Probable storage
- 11 Administrative offices
- 12 Probable storage
- 13 Not identified
- 14 Not identified
- 15 Shop
- 16 Shop
- 17 Shop
- 18 Water Tower
- 19 Boiler house

U.S. CONFIDENTIAL  
(British Confidential)

5 IDENTIFICATION OF FACILITIES (Cont'd)

20 Probable storage  
 21,22 Storage  
 23 Assembly building  
 24 Components erection  
 25 Components erection  
 26 Final assembly  
 27 Storage building in revettment  
 28 Revettment  
 29 Probable quarters  
 30 Probable quarters  
 31 Probable quarters

6 DISCUSSION

The facilities of the plant are suitable for major airframe components manufacturing and erection. It is presumed that these are transported by road to other NAKAJIMA factories, components may <sup>also be</sup> taken to the nearby OTA A/F use of repair and modifications.

7 ACTIVITY

No useful statement as to activity can be made as no identifiable finished products can be seen. A large number of personnel shelters are seen in the compound indicating a considerable number of workers.

ENCL: CFL-750.090

INTERPRETED BY:

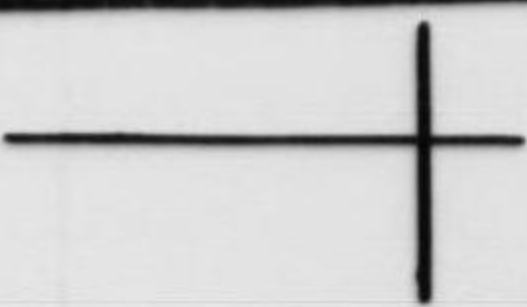
A.L. GANUNG  
 Maj. AC

JTG CONSULTANT:

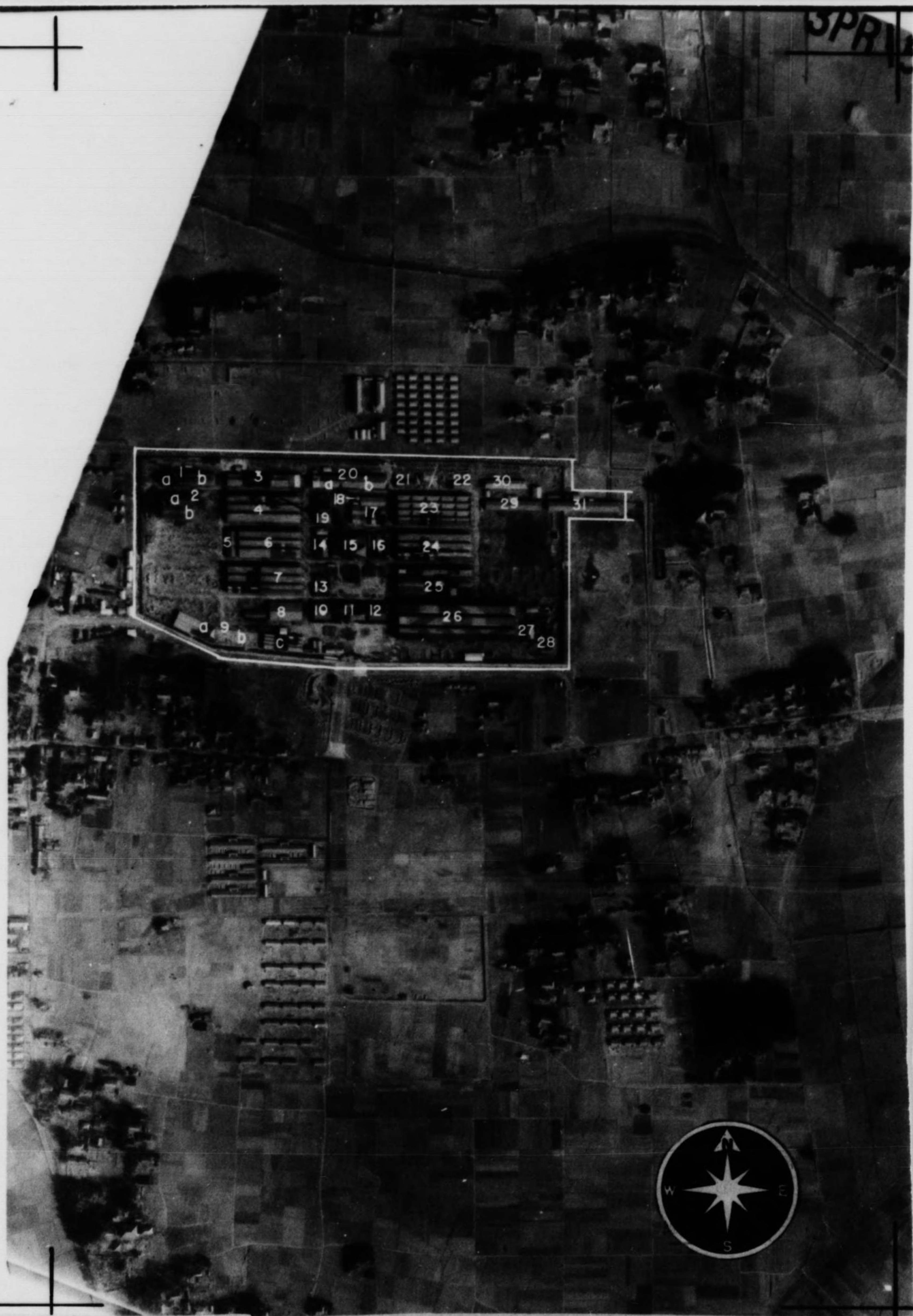
WARREN HILL  
 Lieut. USNR

APPROVED BY:

*for* *Charles Kilgore*  
 LEE W. KILGORE  
 Major, Air Corps  
 Chief, Evaluation Branch  
 Photographic Division  
 Office of the Asst. Chief of Air Staff,  
 Intelligence



3PR



TARGET NO.90:13-2138 NAME NAKAJIMA A/C, OJIMA PLANT

DATE 13 June 45 P/4  
COMPLETED

APPROX. COORD.36°15' N 139°20'E PHOTO DATE 30 Mar 45

SCALE 1/6,000

F/A NO. 153  
CFL 750.090

SORTIE, PRINT NOS. 3PR/5M109-4R:119

CONFIDENTIAL

U.S. CONFIDENTIAL  
(British Confidential)

PHOTO INTELLIGENCE SECTION  
EVALUATION BRANCH  
PHOTOGRAPHIC DIVISION  
AC/AS, INTELLIGENCE

FUNCTIONAL ANALYSIS REPORT NO. F/A-153

Date 8 June 1945

TARGET NO: 90:13-2138

NAME OF TARGET: NAKAJIMA A/C, OJIMA PLANT

LOCATION: OJIMA, JAPAN      COORDINATES: 36° 15' N - 139° 20' E

PHOTOGRAPHY:      Date      Mission      Print Nos.

	12 FEB 45	3PR/5M45	2V:45,6
	30 MAR 45	3PR/5M109	4R:118-120

1      This report has been prepared from a study of aerial photographs and a consideration of evaluated ground information supplied by the Joint Target Group.

2      FUNCTION

        This plant is reported to be making Airframe components for the NAKAJIMA Factories.

3      LOCATION

        The OJIMA Plant is located 1 1/2 miles N. of the OTA A/F, which is on the N. bank of the TONE River at the E. side of the town of OJIMA. About 4 miles to the E. of this plant is the KOIZUMI A/F and the OTA and KOIZUMI NAKAJIMA A/C Factories.

4      SERVICES

        The plant is served only by highways, however R.R. shipping facilities are available at a R.R. siding 1 1/2 miles N.W. of OJIMA.

5      IDENTIFICATION OF FACILITIES

1a	Boiler House
b	Possible press shop
2a	Probable shop or forge
b	S. bay or building under construction
3	Shop
4	Shop
5	Storage
6	Shop
7	Shop
8	Probable storage
9	Probable storage (b-Removed between above sorties)
10	Probable storage
11	Administrative offices
12	Probable storage
13	Not identified
14	Not identified
15	Shop
16	Shop
17	Shop
18	Water Tower
19	Boiler house



5 IDENTIFICATION OF FACILITIES (Cont'd)

20 Probable storage  
 21,22 Storage  
 23 Assembly building  
 24 Components erection  
 25 Components erection  
 26 Final assembly  
 27 Storage building in revettment  
 28 Revettment  
 29 Probable quarters  
 30 Probable quarters  
 31 Probable quarters

6 DISCUSSION

The facilities of the plant are suitable for major airframe components manufacturing and erection. It is presumed that these are transported by road to other NAKAJIMA factories, components may <sup>also be</sup> taken to the nearby OTA A/F use of repair and modifications.

7 ACTIVITY

No useful statement as to activity can be made as no identifiable finished products can be seen. A large number of personnel shelters are seen in the compound indicating a considerable number of workers.

ENCL: CFL-750.090

INTERPRETED BY:

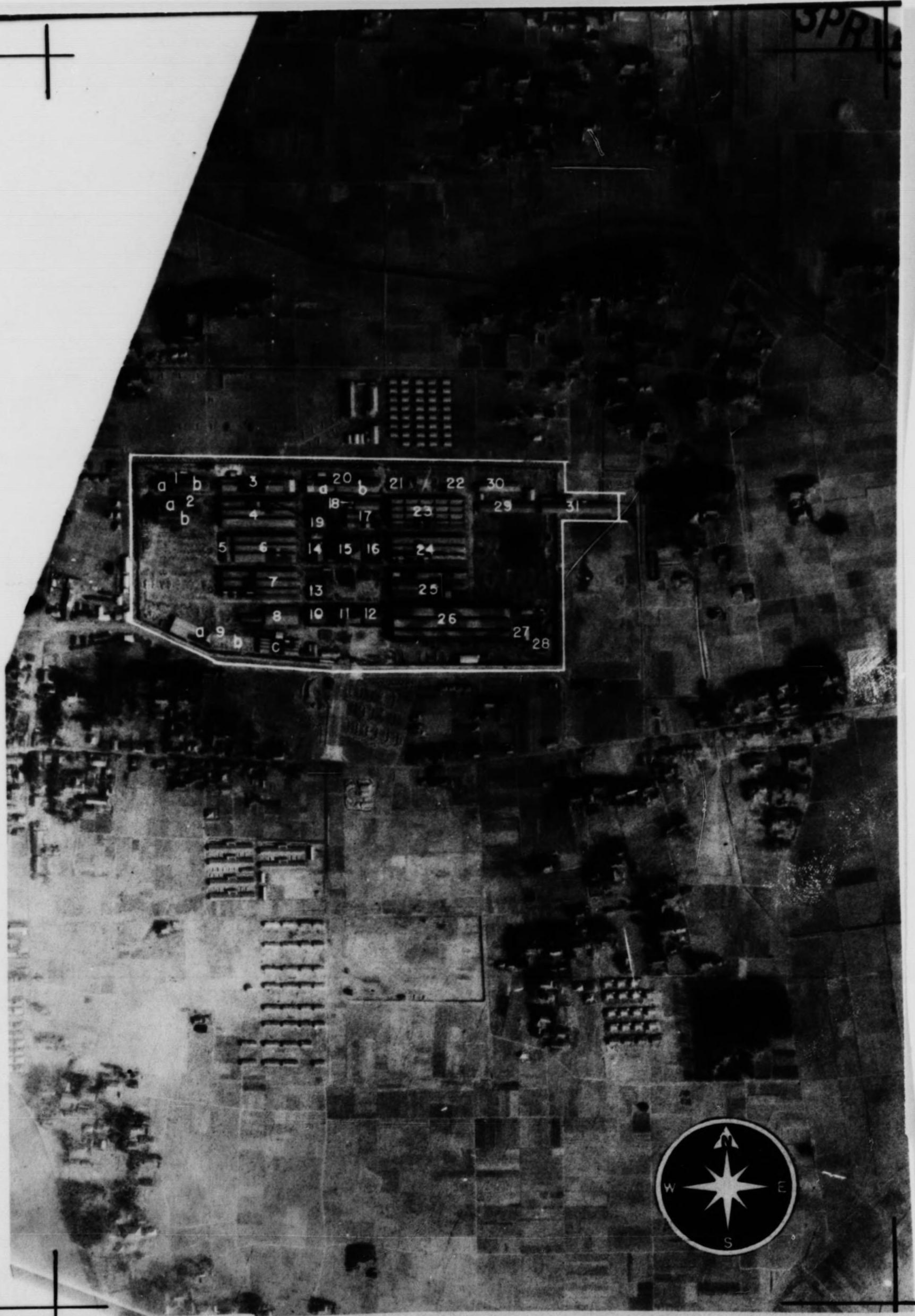
A.L. GANUNG  
Maj. AC

JTG CONSULTANT:

WARREN HILL  
Lieut. USNR

APPROVED BY:

*for* *Chas Kilgore*  
 LEE W. KILGORE  
 Major, Air Corps  
 Chief, Evaluation Branch  
 Photographic Division  
 Office of the Asst. Chief of Air Staff,  
 Intelligence



TARGET NO.90:13-2138 NAME NAKAJIMA A/C, OJIMA PLANT

DATE 13 June 45 P/4  
COMPLETED

APPROX. COORD.  $36^{\circ}15' N$   $139^{\circ}20' E$  PHOTO DATE 30 Mar 45

SCALE 1/6,000

F/A NO. 153  
CFL 750.090

SORTIE, PRINT NOS. 3PR/5M109-4R:119

CONFIDENTIAL