

MG-61

145
(4)

Report # 56

LIC (4)

10

AIRCRAFT ACTION REPORT

CONFIDENTIAL

RESTRICTED
(Reclassify when
filled out)

I. GENERAL

Ref: VMB-413;423;433;443;611
201 203 96 72 15

(a) Unit Reporting MAG-61 (b) Based on or at Emirau Island (c) Report No 56
E. 0835-0855L
(d) Take off: Date 13 February, 1945 Time (LZ) 0931-0934L (Zone); Lat 1° 36' S Long 150° E.
E. 1219 L
(e) Mission Tobera # 22, New Britain. (f) Time of Return 061145 L (Zone)

II. OWN AIRCRAFT OFFICIALLY COVERED BY THIS REPORT.

(a) TYPE	(b) SQUADRON	NUMBER			(f) BOMBS AND TORPEDOES CARRIED (PER PLANE)	(g) FUZE SETTING
		(c) TAKING OFF	(d) ENGAGING ENEMY A/C	(e) ATTACKING TARGET		
PBJ-1	VMB413	1	None	5	2 x 700 depth charges	
PBJ-1	VMB423	6	None	1	3 x 700 depth charges	
PBJ-1	VMB433	1	None	1	4 x 1000# SAP	AN-M-103
					2 x 1000# GP	AN-M-103
					3 x 650 depth charges	AN-M-103
					3 x 700 depth charges	AN-M-103

III. OTHER U. S. OR ALLIED AIRCRAFT EMPLOYED IN THIS OPERATION.

(a) TYPE	(b) SQUADRON	(c) NUMBER	BASE	(f) TYPE	(g) SQUADRON	(h) NUMBER	BASE
PEY	VPB 44	1	same	PEY	VPB 44	1	same
FAU	NZ#22	2	same				

IV. ENEMY AIRCRAFT OBSERVED OR ENGAGED (By Own Aircraft Listed in II Only).

(a) TYPE	(b) NO OBSERVED	(c) NO. ENGAGING OWN A/C	(d) TIME ENCOUNTERED	(e) LOCATION OF ENCOUNTER	(f) BOMBS, TORPEDOES CARRIED, GUNS OBSERVED	(g) CAMOUFLAGE AND MARKING
None			(ZONE)			
			(ZONE)			
			(ZONE)			

(h) Apparent Enemy Mission(s)

Did Any Part of Encounter(s) Occur in Clouds? (YES OR NO) If so, Describe Clouds (BASE IN FEET TYPE AND TENTHS OF COVER)

Time of Day and Brilliance of Sun or Moon (NIGHT, BRIGHT MOON, DAY, OVERCAST, ETC.)

(k) Visibility (MILES)

V. ENEMY AIRCRAFT DESTROYED OR DAMAGED IN AIR (By Own Aircraft Listed in II Only).

(a) TYPE ENEMY A/C	(b) DESTROYED OR DAMAGED BY:			(c) WHERE HIT ANGLE	(d) DAMAGE CLAIMED
	TYPE A/C	SQUADRON	PILOT OR GUNNER		
None					

AIRCRAFT ACTION REPORT

~~CONFIDENTIAL~~

Form ACA-1
Sheet 1 of 5

I. GENERAL

(a) Unit Reporting WAG-61 (b) Based on or at _____ (c) Report No. 56
 (d) Take off: Date _____ Time _____; Lat _____ Long _____
 (e) Mission _____ (f) Time of Return _____

II. OWN AIRCRAFT OFFICIALLY COVERED BY THIS REPORT

TYPE	SQD	No.	BASE	TYPE	SQD	No.	BASE
(a)	(b)	(c)	(d)	(e)	(f)	(g)	(h)
PBJ-1	VMB443	9	None	9	3 x 650 D/G		AN-M-103
PBJ-1	VMB611	9	None	8	3 x 700 depth charges		Mk 221
PBJ-1	VMB413	1	None	1	3 x 325 D/G		

III. OTHER U. S. OR ALLIED AIRCRAFT EMPLOYED IN THIS OPERATION.

TYPE	SQD	No.	BASE	TYPE	SQD	No.	BASE
:	:	:	:	:	:	:	:

IV. ENEMY AIRCRAFT OBSERVED OR ENGAGED (By Own Aircraft Listed in II Only)

(a)	(b)	(c)	(d)	(e)	(f)	(g)
TYPE	No.	No Engaging	Time	LOCATION OF ENCOUNTER	BOMBS CARRIED	CAMOUFLAGE
	OBSERVED	Own A/C	Encountered		GUNS	MARKINGS
None			(zone)			
			(zone)			

(k) Apparent Enemy Mission(s) _____
 Did Any Part of Encounter(s) _____
 (i) Occur in Clouds? _____ If so, Describe Clouds _____
 Time of Day and (Yes or no) _____ (base in feet, type, tenths cover)
 (j) Brilliance of Sun or Moon _____ (k) Visibility _____
 (night, Bright moon; Day, overcast; etc.) (miles)

V. ENEMY AIRCRAFT DESTROYED OR DAMAGED IN AIR (By Own Aircraft Listed in II)

(a)	(b)	(c)	(d)
TYPE	Destroyed or Damaged By:		Damage
A/C	Type A/C: SQD	Pilot or gunner	Guns used: Where hit angle: Claimed
None			

AIRCRAFT ACTION REPORT

~~CONFIDENTIAL~~

RESTRICTED
(Reclassify when filled out)

REPORT No. _____

VI. LOSS OR DAMAGE, COMBAT OR OPERATIONAL, OF OWN AIRCRAFT (of those listed in II only).

(a) TYPE OWN A/C	(b) SQUADRON	(c) CAUSE: TYPE ENEMY A/C, TYPE GUN, OR OPERATIONAL CAUSE	(d) WHERE HIT, ANGLE (List armor, self-sealing tanks, equipment hit)	(e) EXTENT OF LOSS OR DAMAGE, (Give Bureau serial number of planes destroyed)
1	None			
2				
3				
4				
5				
6				
7				
8				
9				
10				
11				
12				
13				
14				

VII. PERSONNEL CASUALTIES (in aircraft listed in II only; identify with planes listed in VI by Nos. at left).

(a) NO	(b) SQUADRON	(c) NAME, RANK OR RATING	(d) CAUSE	(e) CONDITION OR STATUS
	None			

VIII. RANGE, FUEL, AND AMMUNITION DATA FOR PLANES RETURNING

(a) TYPE A/C	(b) MILES OUT	(c) MILES RETURN	(d) AV. HOURS IN AIR	(e) AV. FUEL LOADED	(f) AV. FUEL CONSUMED	(g) TOTAL AMMUNITION EXPENDED				(h) NO. OF PLANES RETURNING
						.30	.50	20MM	MM	
*PBJ-1	288	212	3hrs43'	973	585	N	0	N	E	34
**PBJ-1	171	156	2hrs14'	1016	425	N	0	N	E	7

*Enirau Mitchells **Green Mitchells

IX. ENEMY ANTI-AIRCRAFT ENCOUNTERED (Check one block on each line).

CALIBER	NONE	MEAGER	MODERATE	INTENSE
HEAVY — Time-fused shells, 75mm and over	<input checked="" type="checkbox"/>			
MEDIUM — Impact-fused shells, 20mm-50mm	<input checked="" type="checkbox"/>			
LIGHT — Machine gun bullets, 6.5mm-13.2mm	<input checked="" type="checkbox"/>			

X. COMPARATIVE PERFORMANCE, OWN AND ENEMY AIRCRAFT (use check list at left).

- SPEED, CLIMB,
at various altitudes

TURNS

DIVES

CEILINGS

RANGE

PROTECTION

ARMAMENT

No enemy aircraft encountered.

AIRCRAFT ACTION REPORT ~~CONFIDENTIAL~~

RESTRICTED
Reclass. when
filled out!

(OMIT THIS SHEET IF NO ATTACK WAS MADE)

REPORT No _____

XI. ATTACK ON ENEMY SHIPS OR GROUND OBJECTIVES (By Own Aircraft Listed in II Only).

- (a) Target(s) and Location(s) Tobera #22, New Britain (b) Time Over Target(s) 1058-1101L
(FOR SHIPS INCLUDE ALL IN AREA UNDER ATTACK)
- (c) Clouds Over Target clear
(BASE IN FEET TYPE AND TENTHS OF COVER)
- (d) Visibility of Target clear (e) Visibility unlimited
(CLEAR, HAZY, PARTIALLY OBSCURED BY CLOUDS, ETC.) (MILES)
- (f) Bombing Tactics: Type level Bomb Sight Used Mk 15 mod 7
(LEVEL, GLIDE OR DIVE) (TYPE)
- Bombs Dropped per Run all Spacing varied Altitude of Bomb Release 11,100-13,000'
(NUMBER) (FEET) (FEET)
- (g) Number of Enemy Aircraft Hit on Ground: Destroyed None Probably Destroyed None Damaged None

(h) AIMING POINT	(i) DIMENSIONS OR TONNAGE	(j) NO A/C ATTACKING (k) SQUADRON	(l) BOMB AND AMMUNITION EXPENDED EACH AIMING POINT	(m) NO HIT ON AIMING POINT	(n) DAMAGE None, slight, or destroyed or sunk
1 Tobera # 22	2700' x 750'	7 VMB-413	17 x 700 D/C 6 x 325 D/C		
2 same		7 VMB-423	2 x 1000# GP 24 x 1000# SAP		
3 same		9 VMB-433	24 x 650 D/C 3 x 700 D/C		See "o"
4 same		9 VMB-443	27 x 650 D/C		
5 same		8 VMB-611	24 x 700 D/C		
6					
7					
8					

(o) RESULTS: (For all hits claimed on ship targets and for land targets of special interest, draw diagram, top or side view or both, as appropriate, showing type and location of hits. For all targets give location and effect of hits, and identify by numbers above. Use additional sheets if necessary.)

Tobera # 22, an area approximately 2700 feet long and varying from 750 feet to 1200 feet wide, was the target for five squadrons of PBJ's plus two squadrons of PV's, led by PBJ's. The PBJ's accounted for 9 x 1000 pound GP's and 21 x either 650 or 700 pound D/C's in the target. The total load of all PBJ's was 6 x 325 pound D/C's, 51 x 650 pound D/C's, 44 x 700 pound D/C's, 24 x 1000 pound SAP's, and 2 x 1000 pound GP's. Those bombs, which did not hit pay dirt landed within 1500 feet of the target, north (long) and south (short and wide). After-strike photographs (see attached photograph) show holes 75 feet in diameter blasted in the groves. No damage is visible other than a road cratered in three places and the absence of two huts which appeared in earlier photographs near the north row of trees.

(p) Were Photographs Taken? Yes Photographs of Damage, When Taken, Should Be Attached By Staple

AIRCRAFT ACTION REPORT

CONFIDENTIAL

RESTRICTED
Re-use to whom
permitted

REPORT No. _____

XIII. MATERIAL DATA. (Comment freely on performance or suitability, following check list at left. Use additional sheets if necessary).

- ARMAMENT**
Guns, Gunsights
Turrets
Ammunition
Bombs, Torpedoes
Bomb Sights
Bomb Releases
- COMMUNICATIONS**
Radio, Radar
Homing Devices
Visual Signals
Codes, Ciphers
- RECOGNITION**
IFF
Signals
Battle Lights
Procedures
- PROTECTION**
Armor, Points and Angles
of Fire Needing Further
Protection
Leak Proofing
- EMERGENCY EQUIPMENT**
Parachutes
Life Belts, Life Rafts
Safety Belts
Emergency Kits
Rations, First Aid
- NAVIGATIONAL EQUIPMENT**
Compasses
Driftsights
Octants
Automatic Pilots
Charts
Field Lighting
- INSTRUMENTS**
Flight
Power Plant
- OXYGEN SYSTEM**
- CAMOUFLAGE AND
DECEPTION DEVICES**
- STRUCTURE**
Airframe
Control Surfaces
Control System
Dive Flaps
Landing Gear
Heating System
Flight Characteristics
At Various Loadings
- POWER PLANT**
Engines
Engine Accessories
Propellers
Lubricating System
Starters
Exhaust Dampers
- HYDRAULIC SYSTEM**
- ELECTRICAL SYSTEM**
Auxiliary Plant
Lights
- FUEL SYSTEM**
- FLIGHT CLOTHING**
- MAINTENANCE**
- BASE FACILITIES**
Plane Servicing Equipment
Personnel Facilities

413		423		433	
CALL	PILOT	CALL	PILOT	CALL	PILOT
254B21	Bronleewe	301B21	Lemke	266B21	Adams
255B21	Beam	302B21	Jones, R.P.	267B21	Shaw
256B21	Oslund	303B21	Ryan	268B21	Tyler
257B21	Muehleisen	304B21	Eckhardt	269B21	Hendy
258B21	Nevins	305B21	Kline	270B21	Carr
259B21	Ingberg	306B21	Burlingham	271B21	Wolfe
**260B21	Mendenhall	*307B21	Graves	272B21	Green
	*Led PV's of NZ#2			273B21	Klein
	**Led PV's of NZ#8			274B21	Harpley
443		611			
CALL	PILOT	CALL	PILOT		
279B21	Gould	242B21	Davis, R.R.		
280B21	Lord	243B21	Davis, S.		
281B21	Hartman	244B21	Branson		
282B21	McConnell	245B21	Hamilton		
283B21	Hudson	246B21	Bennett		
284B21	Ballou	247B21	Mason		
285B21	Habig	248B21	Hurley		
286B21	Whittemore	249B21	Griffith		
287B21	Dee	250B21	Samuels		

Four PBJ squadrons and NZ PV's from Emirau joined with VMB-423 and PV's of NZ#2 from Green for a seven squadron strike on Tobera Target # 22. This is probably the largest coordinated strike by 2 engine bombers ever staged by this command.

The flight from Emirau proceeded to Powell Bay then across the lower part of the Gazelle Peninsula for the rendezvous over Janmer Bay. Two groups were formed leaving the rendezvous. The first group consisted of VMB-423, NZ#2 from Green and the NZ PV's from Emirau. They left on a course of 007° to the Warongi River where a turn was made to the bomb run of 317°. Heading diagonally across the narrow dimension of the irregularly shaped target the group formation was a tight left echelon with the squadrons javelined down. The squadrons released independently and broke right.

The second group composed of the four PBJ squadrons from Emirau left the rendezvous a minute later. Proceeding north for 10 minutes a turn was made to the bomb run of 084° across the long dimension of the target. The group was in left echelon with the squadrons javelined down. Breaking to the right the squadrons rallied south of Duke of York for the return to Base.

One plane turned back on the route out when a engine began to vibrate excessively.

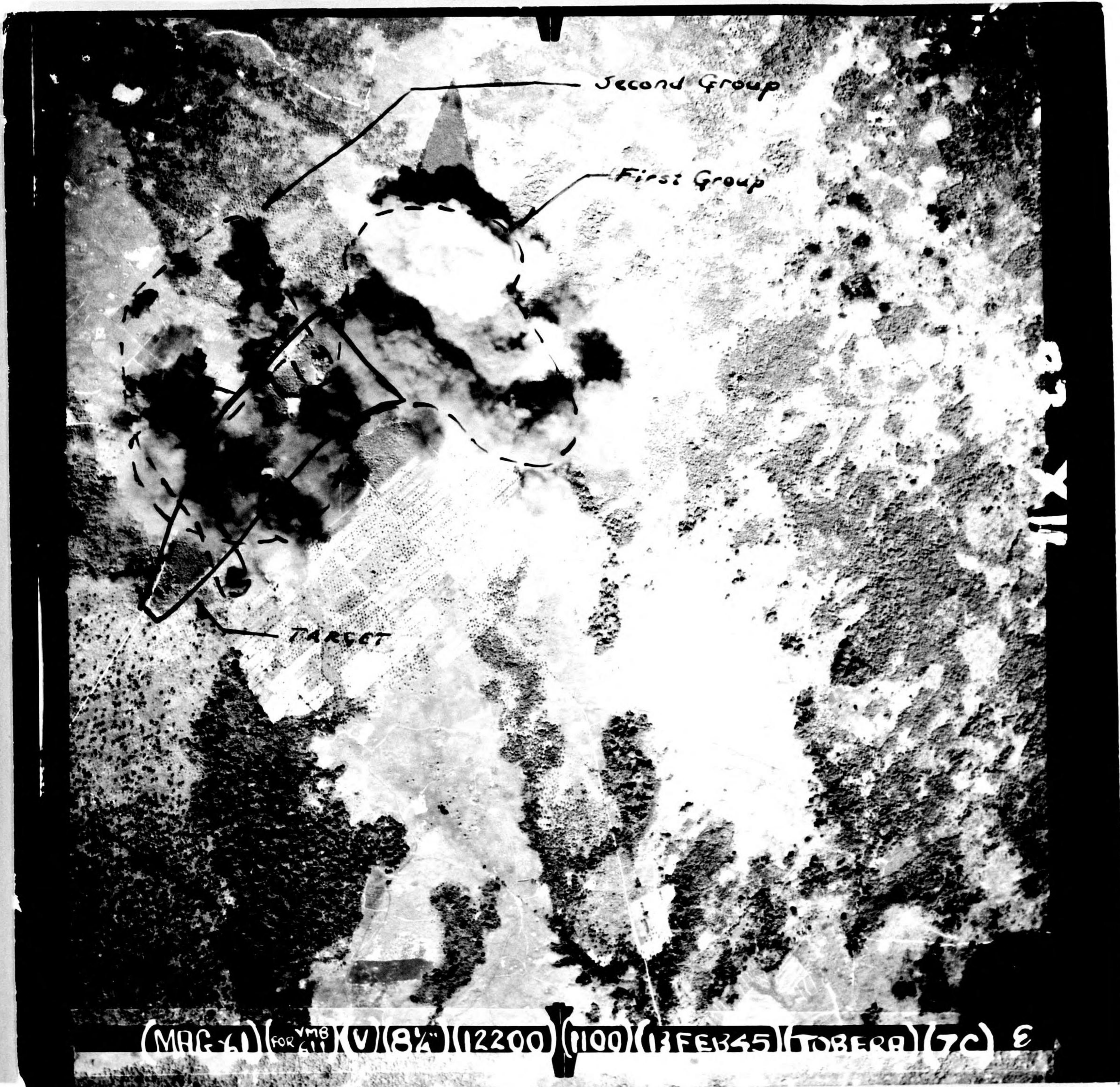
D. E. HATCH,
Capt., USMCR,
Group Intelligence Officer.

APPROVED BY

P. K. SMITH,
Col., USMC,
Group Commander.

REPORT PREPARED BY:

SIGNATURE _____ RANK AND DUTY _____ SIGNATURE _____ RANK AND DUTY _____ DATE _____



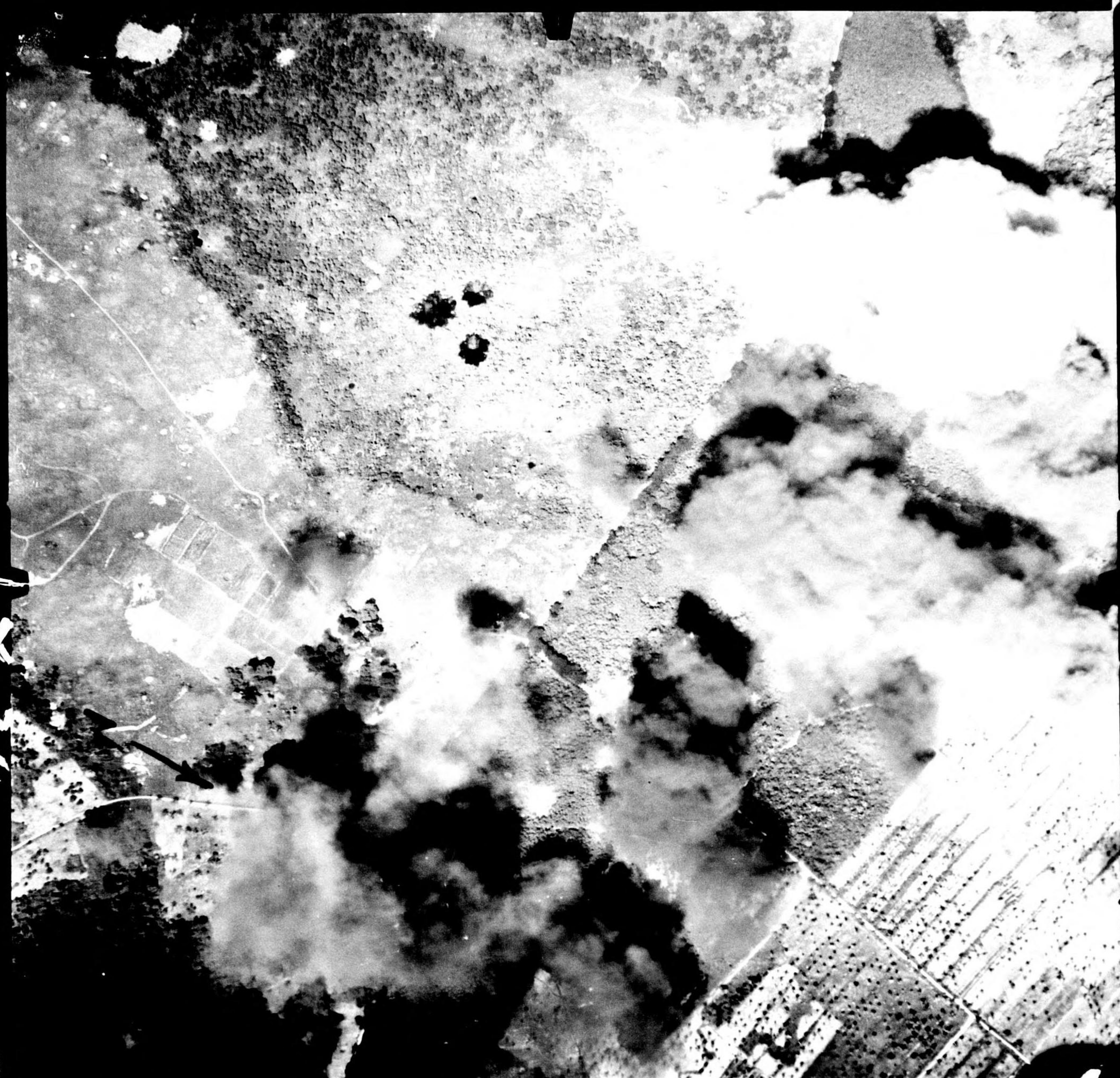
Second Group

First Group

TARGET

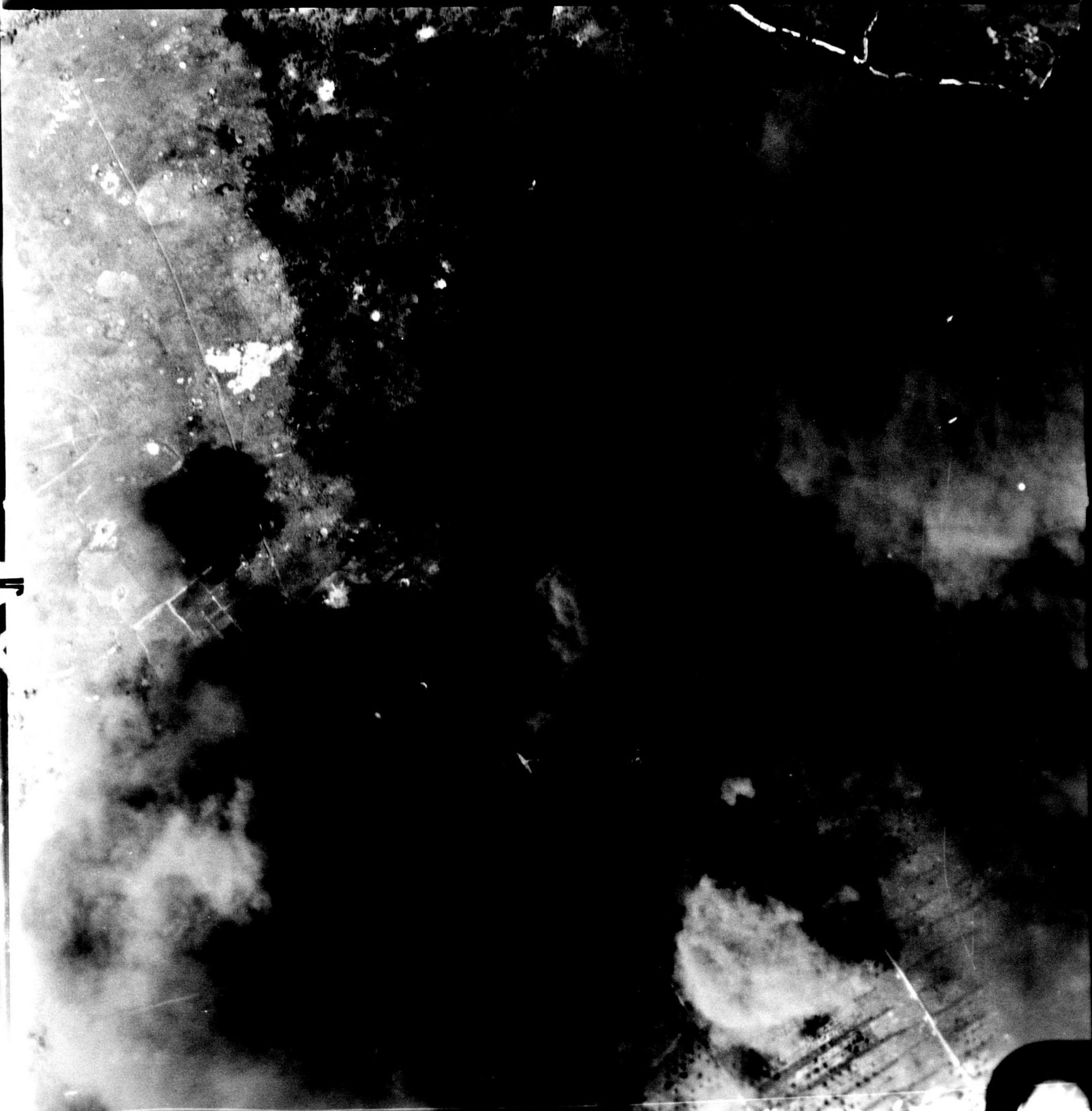
XII

(MAG-61) (FOR ^{YMB} 411) (V/82) (12200) (1100) (3 FEB 45) (TOBERA) (7C) E

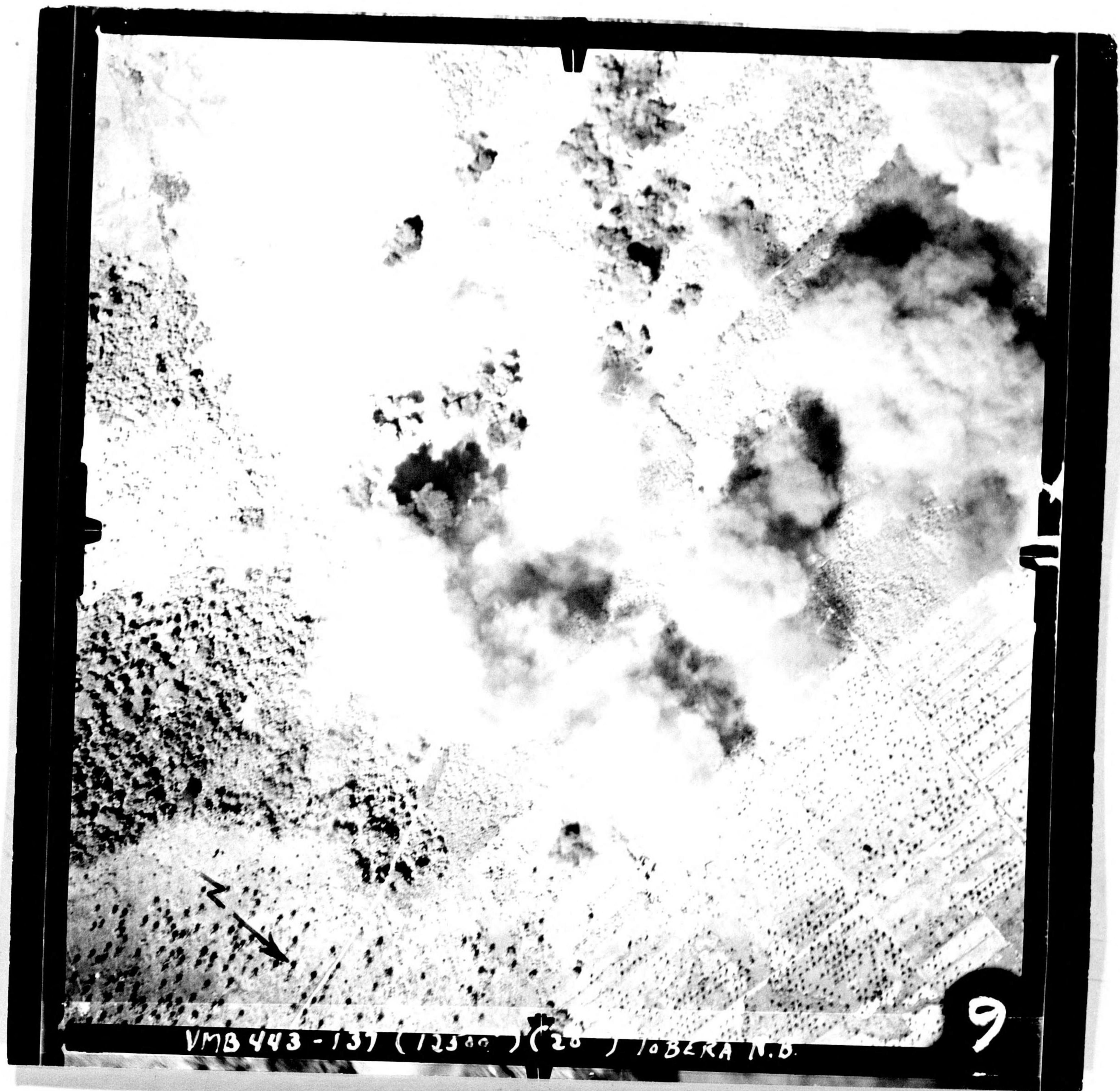


X
2

() (7) VMB-433 20° (C) 13-2-45 1300 TOBERA



VMB 413-698 13 Feb 45



VMB 443 - 137 (12500) (20) TOBERA N.B.

9



