

Handwritten text in a cursive script, likely a historical document or manuscript. The text is written in a dense, flowing style with many small characters and some larger, more prominent ones. It appears to be a continuous passage of text, possibly a letter or a record. The script is highly stylized and characteristic of certain historical writing systems.

Handwritten text in a cursive script, similar to the one on the left page. This page contains a similar passage of text, written in a dense, flowing style. The characters are highly stylized and characteristic of historical writing systems. The text is arranged in a single column, filling most of the page.

此大明神ありりれ給ふ山日持現是
あり 第一より後乃大の神九列
もまうたの明神と観音の身三
いさこのやむ神者隆麻鳩の
非ともや身四のや大の神は
乃御持の神と則ありあり
第一より後乃大の神九列
鳩乃月神とつりつりつりつり
星ありありの長月やほまのみそり
まじり 住吉所の敷向あり
乃神は十月旦宮の時小恙影向
あり候へ多の神海に今も絶えぬ
け宮居りし中へ思ひ出成
毎々吉業 吉業 吉業 吉業 吉業
毎々吉業 吉業 吉業 吉業 吉業

乃も備なる神所まそりつた
あり 第一より後乃大の神九列
もまうたの明神と観音の身三
いさこのやむ神者隆麻鳩の
非ともや身四のや大の神は
乃御持の神と則ありあり
第一より後乃大の神九列
鳩乃月神とつりつりつりつり
星ありありの長月やほまのみそり
まじり 住吉所の敷向あり
乃神は十月旦宮の時小恙影向
あり候へ多の神海に今も絶えぬ
け宮居りし中へ思ひ出成
毎々吉業 吉業 吉業 吉業 吉業
毎々吉業 吉業 吉業 吉業 吉業

Handwritten text in Arabic script, likely a religious or philosophical treatise. The text is written in a cursive style and spans approximately 12 lines. It begins with a large initial letter 'س' (S) and contains several smaller initials and diacritics throughout.

Handwritten text in Arabic script, continuing the text from the previous page. It is written in a similar cursive style and spans approximately 12 lines. It begins with a large initial letter 'س' (S) and contains several smaller initials and diacritics throughout.

Handwritten text in a cursive script, likely a historical document or letter. The text is written in a dark ink on a light-colored paper. It consists of approximately 15 lines of text, with some lines starting with a small symbol or character. The script is dense and flowing, characteristic of a cursive hand. The text is arranged in a single column, reading from top to bottom. There are some small annotations or marks between the lines of text.

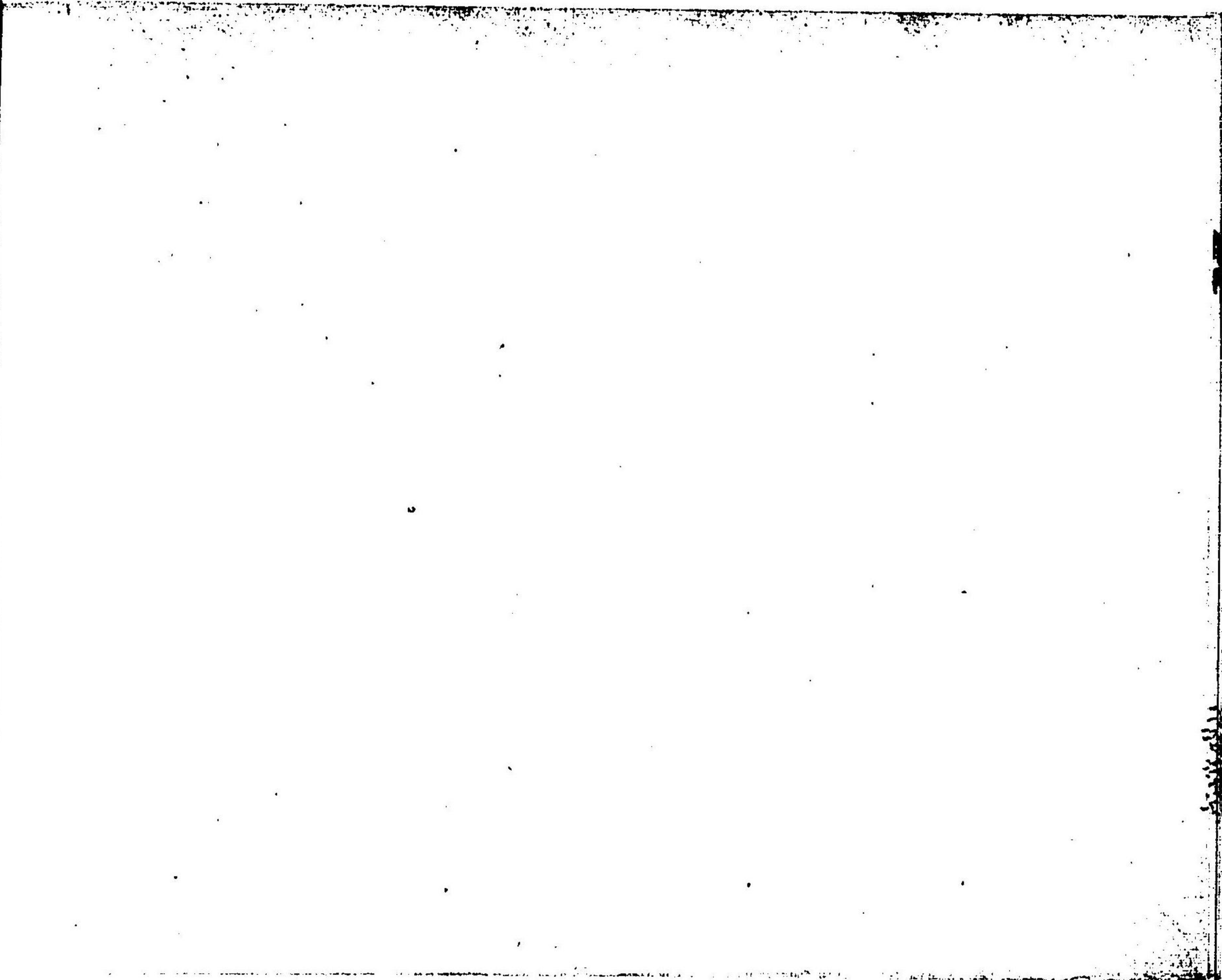
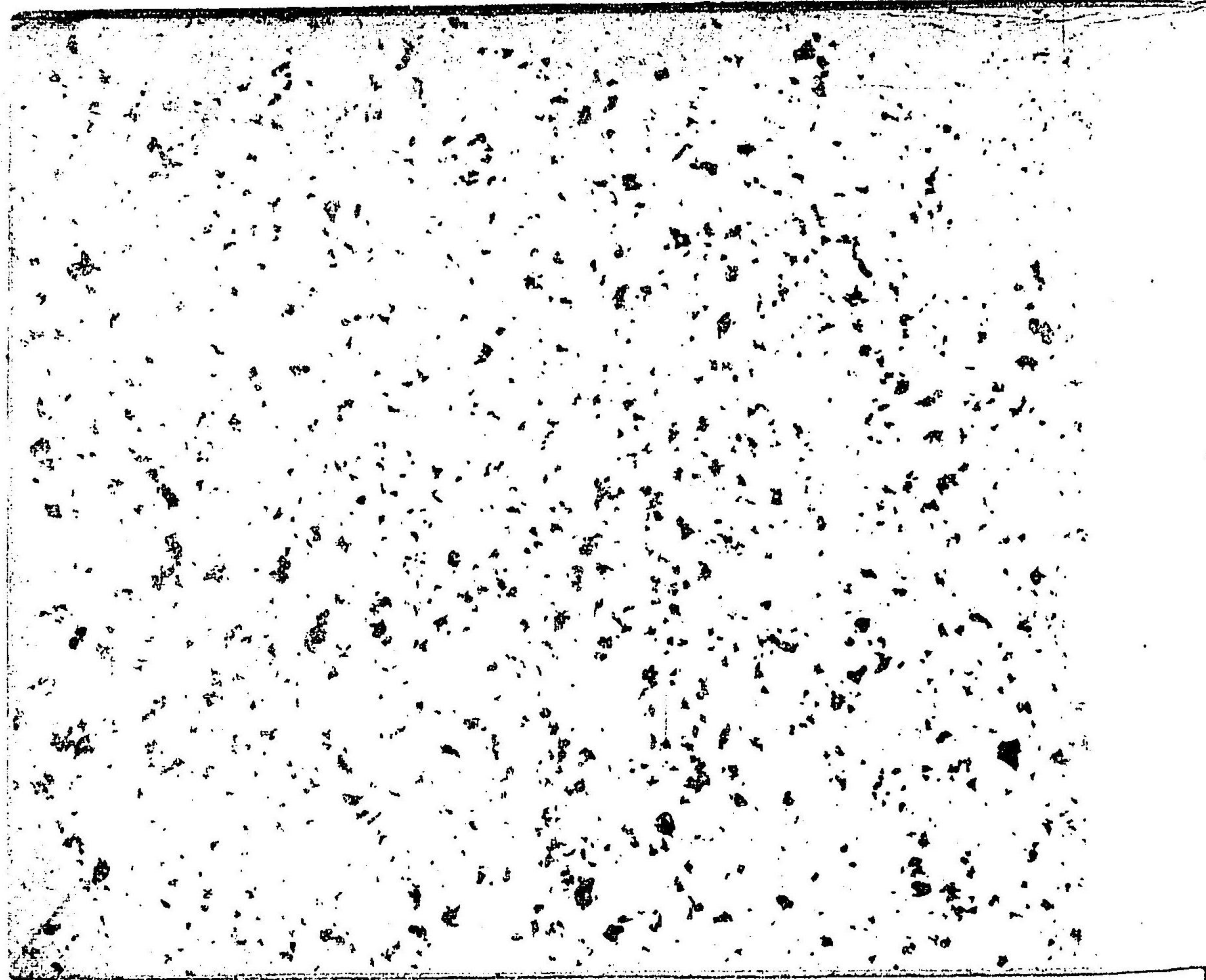
Handwritten text in a cursive script, likely a historical document or letter. The text is written in a dark ink on a light-colored paper. It consists of approximately 15 lines of text, with some lines starting with a small symbol or character. The script is dense and flowing, characteristic of a cursive hand. The text is arranged in a single column, reading from top to bottom. There are some small annotations or marks between the lines of text.

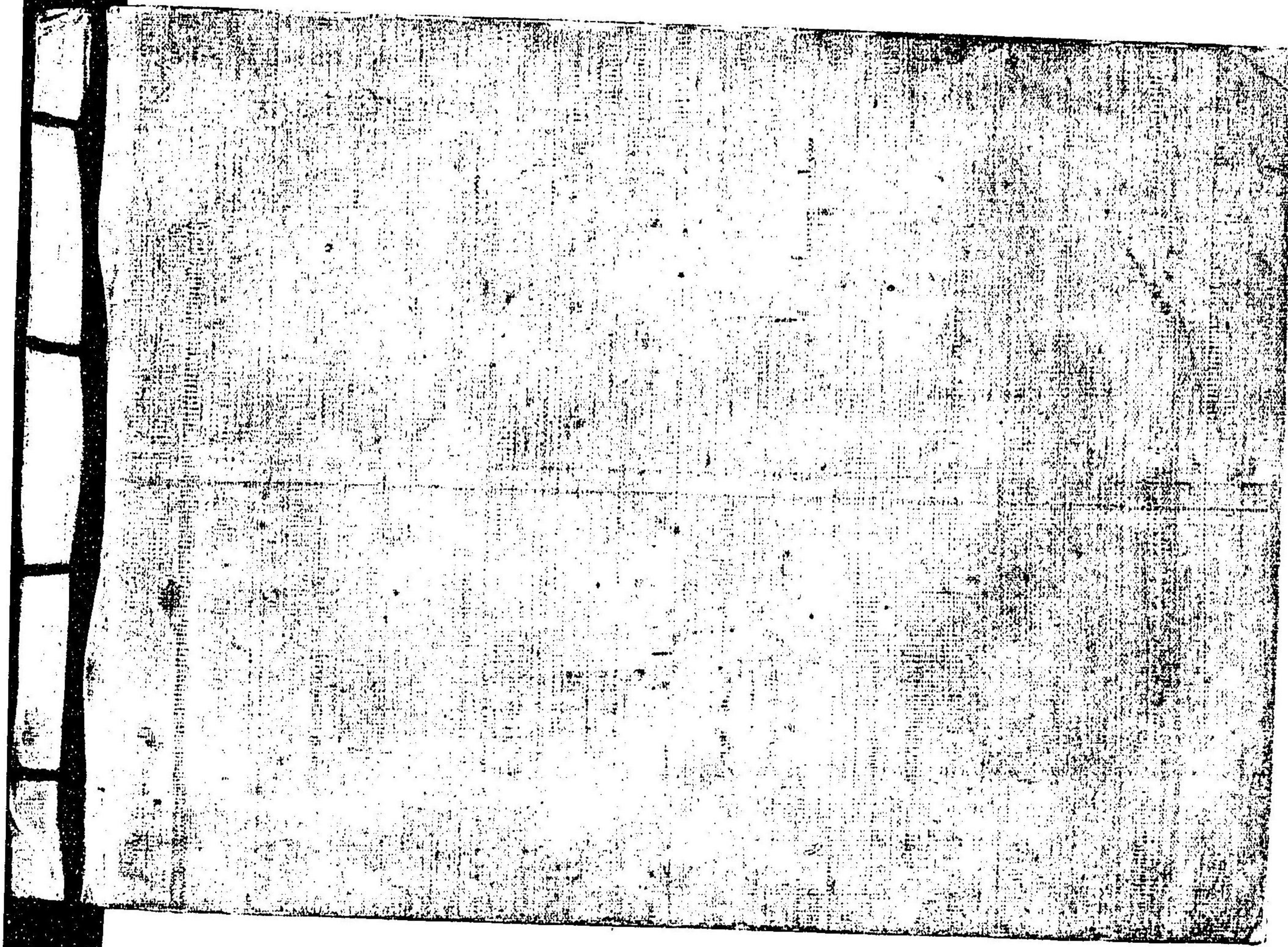
此の書は、
 明治二十六年二月十七日
 訂正出版
 明治三十六年一月廿日別製本御届
 東京市牛込区新小川町
 二丁目拾番地
 訂正者 觀世清廉
 京都市上京区二條通
 御幸町西十一番戸
 發行兼
 印刷者 檜 常之
 東京市日本橋區北鞆町一石橋
 特約店 堀井吳三郎
 京都市松原高倉東ノ
 石田旭山寫真石版部印行

版權所

訂正者 觀世清廉
 京都市上京区二條通
 御幸町西十一番戸
 發行兼
 印刷者 檜 常之
 東京市日本橋區北鞆町一石橋
 特約店 堀井吳三郎









持 57

563

