

Historic, archived document

Do not assume content reflects current scientific knowledge, policies, or practices.

SPRING FLOWERING BULBS

FOR THE AUTUMN OF 1924

Narcissus, Tulips, Crocus, Hyacinths



JOHNSON'S SEED STORE

2158-60 East 9th Street

CLEVELAND, OHIO

JOHNSON'S FALL CATALOG

OF FRENCH AND HOLLAND GROWN BULBS

A Word About Quality

Our business, whether in Seeds, Bulbs, Plants, Implements, Fertilizers, insecticides, Bird or Poultry Supplies, has always been conducted with a view to supplying the finest quality that can be had.

Our growers of Bulbs in Holland, France, Bermuda, China, and Japan, realize that we are expert judges, that we pay the highest market prices, which insures proper growing on their part, and that our personally conducted trials keeps us properly informed as regards their stocks.

One of the principle features of our business is to keep always a display of seasonable goods at our store, and we welcome our patrons who come to Cleveland to visit our establishment. You will find our clerks never too busy to talk with you about your garden problems.

Special Free Delivery

We will deliver all Tulips, Hyacinths, Narcissi, Crocus, Freesias, Amaryllis, Anemones, Dielytra, Oxalis, and Ranunculus listed in this catalog, if your purchase amounts to TWO DOLLARS or over, when cash accompanies the order, via Express, Parcel Post, or Freight, at our option, to your town or city, provided your home is within 500 miles of Cleveland.

Special Notice. This list contains all the bulbs that we are able to import according to the ruling of the Federal Horticultural Board (Quarantine No. 37).

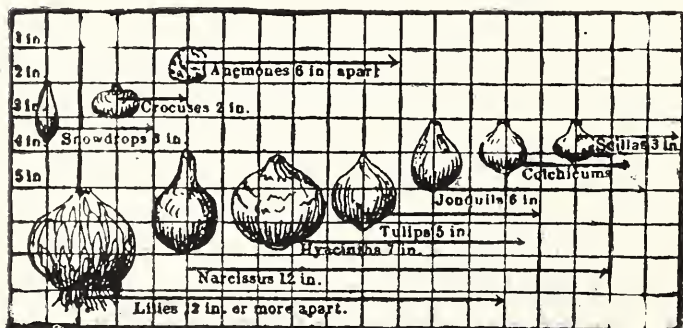
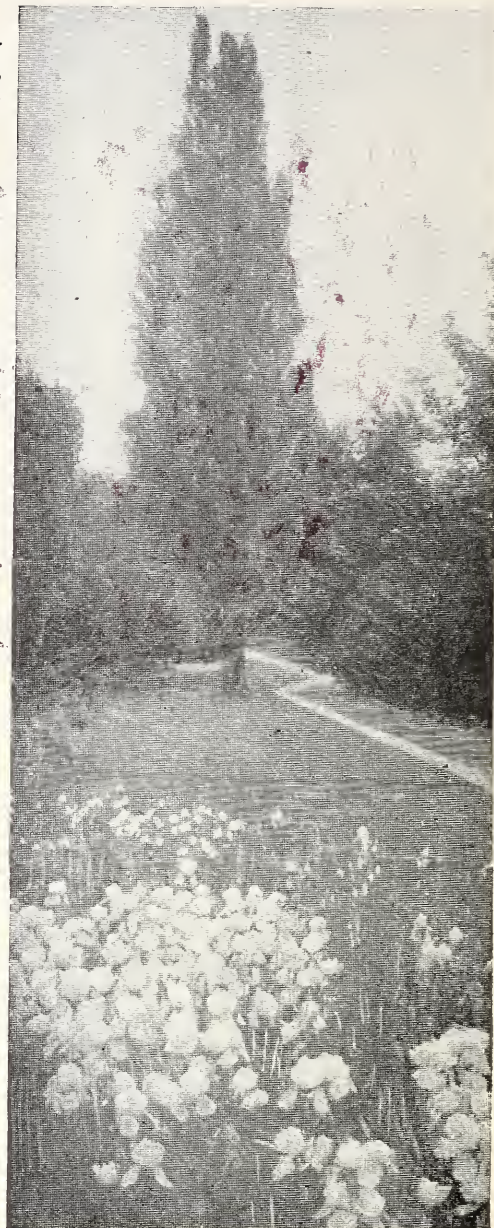
Special Notice Regarding Time of Delivery

Bulbs and roots mature and ripen at different periods during the late summer and autumn, and shipments will be made as follows in the absence of instructions to the contrary.

Our August Shipment includes *Lilium Harrisii*, *Lilium candidum*, Freesias, French Roman Hyacinths, Paper-White, Double Roman and Grand Soleil d'Or Narcissi.

Our September or Main Shipment includes the general line of Bulbs, such as Hyacinths, Tulips, Narcissi, Crocus, Iris, Peonies, and Callas.

Our November Shipment consists of various Lilies.



Quantity of Bulbs Necessary for Round Beds

	Distance Apart	
	4 in.	6 in.
3 ft. diam.....	100	40
4 ft. diam.....	135	75
5 ft. diam.....	225	100
6 ft. diam.....	275	130
7 ft. diam.....	425	175
8 ft. diam.....	475	225

GENERAL PLANTING TABLE

The majority of bulbs should be planted at a depth of about twice their diameter, as shown in the chart herewith. In planting the choicer varieties, a layer of sand beneath the bulbs is especially recommended for Hyacinths and Lilies.

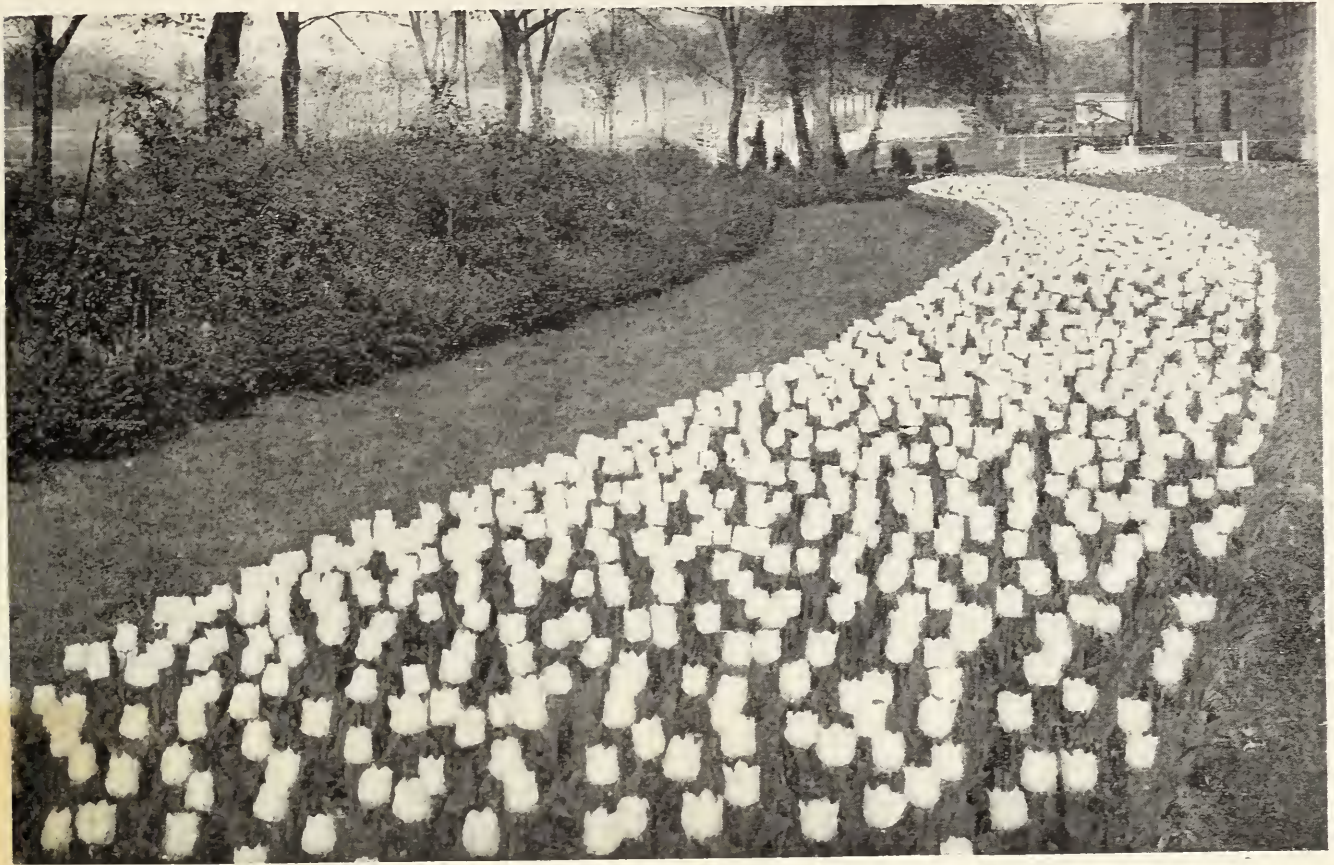
NON-WARRANTY—We cannot guarantee the well-doing of any seeds, plants or bulbs we send out, having no control over conditions—therefore:

Johnson's Seed Store gives no warranty, express or implied, as to description, purity, productiveness, or any other matter of any seeds, plants or bulbs they send out and they will not be in any way responsible for the crop. If the purchaser does not accept the goods on these terms they are at once to be returned.

Cleveland, Ohio, Aug. 15, 1924.
2158-60 East Ninth St., Just South of Prospect Ave.

Yours for best possible service,

JOHNSON'S SEED STORE



Giant Darwin Tulips MAY FLOWERING

These gorgeous new late or May-flowering Tulips are very stately and beautiful—producing immense flowers on tall, sturdy stems attaining a height of from 2 to 3 feet. The flowers are models of perfection in form, lasting, wax-like substance—and in a great variety of both dainty and richly brilliant colorings from blush through pinks, rose, salmon red, crimson, etc., to rich ox-blood reds, from lavender through mauve, light blue to violet, purple and black. The centers of many of them are beautifully marked. The Darwins also include two or three “near whites”—but clear yellows have not been produced. Therefore, where the latter color is desired selection should be made from the “Cottage” Tulips offered on page 4. The Darwin Tulips are exceedingly effective when grown in groups of a dozen or more bulbs of one variety in the garden or herbaceous border with a background of greenery which enhances their magnificence. The beauty, hardiness, and perpetuity of the Darwin Tulips is making them very popular. As cut-flowers they are unsurpassable. The long-stemmed, bold durable flowers have a dignity and character exclusively their own. Varieties most suitable for forcing are indicated by a star. (*)

Afterglow. Deep, rosy orange, with salmon shading at edges of petals; inside deep orange with yellowish base. A showy tulip for out doors. Height 26 inches. Per doz., \$2.50; per 100 \$16.00

Anton Roozen. Vivid rose-pink, with white base; large cup-shaped flower of great beauty. Per doz., 90c; per 100, \$6.25; per 1000, \$55.00.

***Baronne de la Tonnaye.** Vivid pink, blush margin. Very lasting. Per doz., 60c; per 100, \$4.25; per 1000, \$38.00.

***Bartigon.** A magnificent variety, very large flowers of fiery crimson with a white base. Per doz., 90c; per 100, \$6.50; per 1000, \$58.00.

***Blue Aimable.** Soft, bluish-lilac; very large flower. Fine for late forcing. Per doz., 80c; per 100, \$6.00; per 1000, \$40.00.

Centenaire. Beautiful deep rose, flushed claret, lighter blue center. Heights 32 inches. Per doz., \$1.25; per 100, \$8.50; per 1000, \$75.00.

***Clara Butt.** Delicate Salmon pink, perfect shape. Height 22 inches. Per doz., 60c; per 100, \$4.00; per 1000, \$35.00.

Dream. Large flower perfect in form, on a tall, strong stem; color rosy lilac and mauve, with claret purple interior. A variety that combines well with lavender-colored varieties. Height 24

inches. Per doz., 60c; per 100, \$4.25; per 1000 \$60.00.

***Edmee.** (Beauty.) A beautiful shade of cherry rose with a lighter border. On the order of Baronne de la Tonnaye, but stronger and brighter in color. Splendid border variety and good for late forcing. Height 25 inches. Per doz., 75c; per 100, \$5.75; per 1000, \$55.00.

Europe. Fiery salmon scarlet with a white center. Height 20 inches. Per doz., 70c; per 100, \$5.00; per 1000, \$48.00.

***Euterpe.** A beautiful shade of mauve, edged lilac, white center, with a blue halo. A very refined color when forced. Height 26 inches. Per doz., 65c; per 100, \$4.25; per 1000, \$40.00.

Farncombe Sanders. Fiery, rosy scarlet with white center marked. Height 26 inches. Per doz., 80c; per 100, \$5.50; per 1000, \$52.00.

Faust. Blackish violet. Enormous flower. Height 30 inches. Per doz., \$1.00; per 100, \$7.00; per 1000, \$65.00.

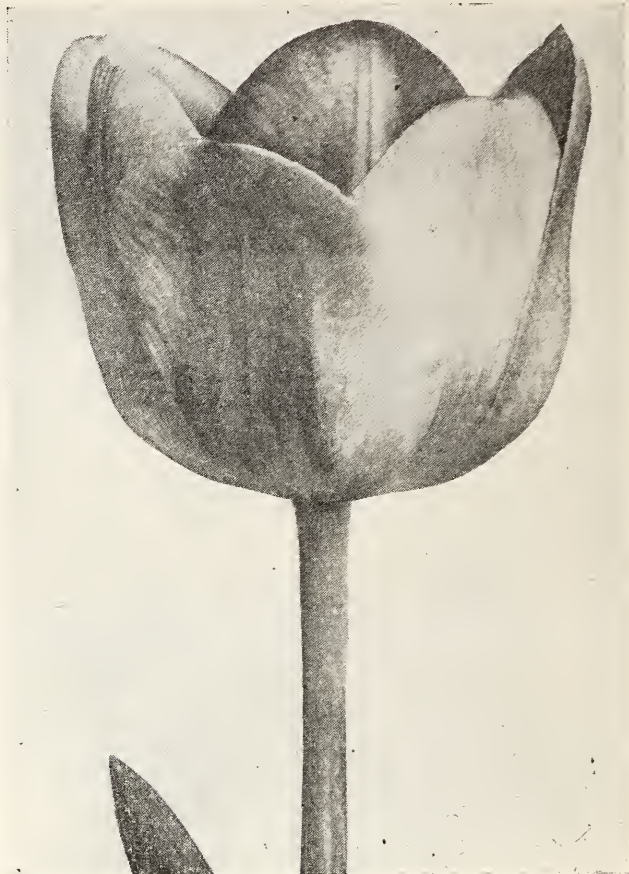
Frans Hals. (New). Large bluish violet. Fine forcer. Height 26 inches. Per doz., \$1.00; per 100, \$7.00; per 1000, \$65.00.

Jubilee. Deep, rich bluish purple. Somewhat egg-shaped. Height 30 inches. Per doz., \$2.00; per 100, \$15.00.

DARWIN TULIPS—CONTINUED

JOHNSON'S SUPERFINE DARWIN MIXTURE

The wonderful interest in these splendid Tulips has brought out a great many varieties too numerous for listing, except those considered the best. In addition to many of the varieties listed above, our mixture contains an equal proportion of many others. Brilliant effects may be obtained by the planting of this mixture of choice named sorts. Per doz., 50c; per 100, \$3.50; per 1000, \$35.00.



Pride of Haarlem

- King George V.** Brilliant cherry-red. Extra large. Height 26 inches. Per doz., \$9.00; per 100, \$70.00.
- La Fiancee.** Rose shaded mauve; edged light pink; blue base. Extra fine. Height 30 inches. Per doz., \$5.50; per 100, \$46.00.
- *La Tulipe Noire.** (The Black Tulip). The nearest in color to the so-called "Black Tulip." Deep maroon black, which has a velvety sheen in the sunlight. Height 25 inches. Per doz., 70c; per 100, \$5.00; per 1000, \$46.00.
- Lenotre.** Vivid rose, shaded blush. Extra early forcing. Height 25 inches. Per doz., \$1.25; per 100, \$10.00; per 1000, \$98.00.
- *Madame Krelage.** Soft lilac-rose, with a broad margin of blush-pink; flowers very large, on tall stems. Height 28 inches. Per doz., 80c; per 100, \$5.50; per 1000, \$50.00.
- Massachusetts.** Soft rose tinted carmine, with pink edges and pink inside. White base, Height 26 inches. per doz., 85c; per 100, \$6.25; per 100, \$58.00.
- *Matchless.** (Roi d'Islande). Soft, old-rose, with a narrow white border; inside soft violet-rose with a blue base. A very beautiful soft color and one that forces splendidly. Height 26 inches. Per doz., \$1.00; per 100, \$7.00; per 1000, \$90.00.
- Mrs. Potter Falmer.** Bright purplish violet, base white; a large flower. Very attractive for border planting. Height 28 inches. Per doz., 65c; per 100, \$4.50; per 1000, \$45.00.
- Petrus Hondius.** Bright carmine rose. Height 28 inches. Per doz., \$1.25; per 100, \$8.50; per 1000 \$80.00.
- Ph. de Commines.** Velvety purple-maroon. Fine for forcing. Height 24 inches. Per doz., 75c; per 100, \$5.50; per 1000, \$50.00.
- *Pride of Haarlem.** Bright rose, suffused with purple. Enormous. Height 36 inches. Per doz., 60c; per 100, \$4.00; per 1000, \$38.00.
- *Princess Elizabeth.** Soft rose with silvery margin, white base. Extra fine forcer. Height 26 inches. Per doz., \$1.25; per 100, \$9.00; per 1000, \$75.00.
- *Prof. Bauwenhoff.** Cherry rose, white and blue base. Height 24 inches. Per doz., 85c; per 100, \$7.00; per 1000, \$85.00.
- Psyche.** Rich rose, inside shaded silvery rose, with blue base; large and handsome; strong stems. Height 26 inches. Per doz., 70c; per 100, \$5.00; per 1000, \$48.00.
- Rev. Ewbank.** Heliotrope lilac with paler edge. Height 23 inches. Per doz., 60c; per 100, \$4.50; per 1000, \$42.00.
- Ronald Gunn.** A very grand tall purple with lavender edge and blue center. Height 26 inches. Per doz., \$1.10; per 100, \$8.50.

- Sieraad van Flora.** Bright rose. Extra large flower. Height 28 inches. Per doz., 75c; per 100, \$6.50; per 1000, \$52.00.
- Sophrosyne.** Blush rose, tinted lilac, darker inside. Blue base with a light edge. Extra fine flower. Height 30 inches. Per doz., 85c; per 100, \$6.50; per 1000, \$55.00.
- The Sultan.** Glossy maroon black. Height 22 inches. Per doz., 70c; per 100, \$4.75; per 1000, \$40.00.
- Valentine.** Violet purple with blue center. Height 22 inches. Per doz., 85c; per 100, \$6.50; per 1000, \$58.00.
- William Copeland.** (Sweet Lavender.) Uniform lilac-rose. A variety that was greatly admired in our exhibit of bulbs grown in pots at the New York Flower Show this year. May be forced as early and as easily as the early Tulips. The color, when grown indoors, becomes a most beautiful lavender. Height 24 inches. Per doz., 75c; per 100, \$6.00; per 1000, \$55.00.
- *William Pitt.** Very dark crimson, with purplish bloom on the outer petals. Of great size and beauty. Height 24 inches. Per doz., \$1.25; per 100, \$7.50; per 1000, \$70.00.
- Zulu.** Deep, velvety purple-black; large, egg-shaped flower of very distinct form. Fine for border or forcing. Height 27 inches. Per doz., 85c; per 100, \$6.00; per 1000, \$58.00.

JOHNSON'S INTRODUCTORY COLLECTION OF DARWIN TULIPS

Our Selection

- No. 5. 10 varieties of 5 bulbs of each..... \$2.75
- No. 10. 10 varieties of 10 bulbs of each..... 5.00
- No 20. 10 varieties of 20 bulbs of each..... 10.00

The varieties used in these collections will be put up in separate bags and labeled so that you will know exactly what you are planting. These bulbs are of the very highest grade and are taken from our regular stocks. Our year-to-year customers, knowing our custom to supply the very best, will recognize the value of our collection offers.



Dutch Breeder Tulips, May-Flowering

Breeder Tulips are very similar in habit to the Darwins, and flower at the same time. Their chief characteristic is their immense blooms, borne on strong, stiff stems, many of them longer than the most gigantic Darwins. The revival of the taste for art colors has made these Tulips strong favorites with American enthusiasts, who find in their bronze, buff, and brown shades excellent material for contrasting with the light and bright colors of the Darwins. They require the same cultural treatment as the Darwins.

JOHNSON'S SUPERFINE MIXTURE OF BREEDER OR ART TULIPS

Composed of the very best varieties. Per doz., 75c; per 100, \$4.75; per 1000, \$40.00.

Apricot. Dull, bronzy buff, shaded deep apricot, base olive-green. A splendid border variety, frequently having an extra number of petals. Height 25 inches. Per doz., \$1.50; per 100, \$8.50; per 1000, \$75.00.

***Bacchus.** Dark violet-blue, the outside of the petals having a darker bloom, base starred white. Nearest approach to dark blue in late Tulips. Height 28 in. Per doz., \$2.75; per 100, \$20.00;

Bronze Queen. Buff, tinged apricot. Height 28 in. Per doz., 60c; per 100, \$5.00; per 1000, \$45.00.

Cardinal Manning. (Kingscourt). A curious blend of mauve and rose, pure orange at edges. Height 28 in. Per doz., 75c; per 100, \$5.50; per 1000, \$52.00.

***Chester J. Hunt.** Large purplish-blue. One of the few long stemmed varieties approaching a deep blue. Height 28 in. Per doz., \$3.50; per 100, \$30.00.

Coridon. Bright yellow, shaded lilac. Height 24 in. Per doz., \$1.40; per 100, \$12.00; per 1000, \$110.00.

Fairy. Terra-cotta and bronze. Large flower. Height 25 in. Per doz., \$1.00; per 100, \$7.50; per 1000, \$60.00.

Feu Ardent. Very brilliant mahogany red. Large, cup-shaped bloom. Height 26 in. Per doz., \$1.25; per 100, \$9.00; per 1000, \$78.00.

Golden Bronze. Old gold outside; deep golden bronze inside. Height 26 in. Per doz., \$1.00; per 100, \$7.00; per 1000, \$60.00.

Jaune d'Oeuf. (Sunrise). Golden, outside petals shaded apricot. Height 22 in. Per doz., 75c; per 100, \$5.50; per 1000, \$50.00.

La Parfaite. Bronze with a yellow edge. Height 26 in. Per doz., \$1.50; per 100, \$10.00; per 1000, \$92.00.

***Louise XIV.** Considered one of the most beautiful Tulips in cultivation. Rich purple, shading to golden bronze near the edges of the petals. The very finest of Tulips. Height 30 in. Per doz., \$2.50; per 1000, \$20.00.

***Lucifer.** Magnificent terra cotta orange with rosy bloom. Height 24 in. Per doz., \$2.00; per 100, \$15.00.

Marie Louise. Rose, shaded salmon; edged bronze orange. Height 23 in. Per doz., 85c; per 100, \$6.00, per 1000, \$58.00.

Media. Enormous flower, crushed strawberry shaded heliotrope, yellow center. Height 25 in. Per doz., 65c; per 100, \$5.00; per 1000, \$40.00.

Prince of Orange. (Sunset). Terra cotta with orange edge. Height 24 in. Per doz., 75c; per 100, \$5.75; per 1000, \$52.00.

Queen Alexandria. Bright orange with a yellow blotch. Height 26 in. Per doz., 75c; per 100, \$5.50; per 1000, \$48.00.

***St. James.** Dark lilac. Bronze-brown edges with yellow and green base. Height 28 in. Per doz., \$3.50; per 100, \$32.00.

Salomon. Lilac, shaded rose with lighter margin. Height 30 in. Per doz., \$2.00; per 100, \$15.00.

Turenne. Bronze violet, margined bronze yellow. Extra large flower. Height 28 in. Per doz., \$1.20; per 100, \$8.50; per 1000, \$78.00.

***Vulcain.** Strawberry red with a broad margin of buff-yellow. Inside dark apricot and yellow. Height 26 in. Per doz., \$2.25; per 100, \$16.00.

Yellow Perfection. Bronze-yellow, shaded deep golden. Height 28 in. Per doz., 75c; per 100, \$5.50; per 1000, \$48.00.

JOHNSON'S

Special Collections of Breeder Tulips

No. 7, 10 varieties of 5 bulbs of each for \$2.75.

No. 9, 10 varieties of 10 bulbs of each, for \$5.00.

Our collections are made from the choicest varieties, each packed in separate bags and marked so you will know the varieties.

Old English or Cottage Tulips

This class, as well as the Darwin Tulips, is becoming very popular. They are very hardy and robust, flowers are large in size and very rich in coloring. The stems are long and wiry and the flowers are durable in a cut state. They are effective planted in clumps or borders, and may be grown in pots as recommended for other Tulips and brought in to succeed the earlier classes.

***Bouton d'Or.** Pure golden yellow; fine showy bedder; excellent for cutting. Height 17 in. Per doz., 75c; per 100, \$6.00; per 1000, \$55.00.

Fairy Queen. Beautiful soft rosy lilac, outer petals broadly margined amber-yellow. A variety should be included in every collection on account of its unique and lovely color; height 24 in. Per doz., 60c; per 100, \$4.50; per 1000, \$42.00.

Gesneriana Spathulata. Dazzling scarlet with blue base; enormous flower; popular bedder. Height 25 in. Per doz., 60c; per 100, \$4.00; per 1000, \$38.00.

Gesneriana Lutea. (The yellow Gesneriana.) Color rich, flower very large; height 24 in. Per doz., 60c; per 100, \$4.00; per 1000, \$38.00.

Grenadier. Large, beautiful orange-red. A new variety with long, graceful blossoms; height 24 in. Per doz., \$2.00; per 100, \$15.00.

Inglescomb Pink. (Salmon Queen.) Beautiful large egg-formed flowers of bright rose pink with a salmon sheen; height 24 in. Per doz., 65c; per 100, \$4.50; per 100, \$40.00.

***Inglescombe Yellow.** A large, globular flower of perfect form; color full rich yellow; height 17 in. Per doz., 65c; per 100, \$4.50; per 1000, \$40.00.

Isabella. (Blushing Bride; Shandon Bells). Creamy white, shaded carmine rose and changing to dark pink; height 17 in. Per doz., 65c, per 100, \$4.50; per 1000, \$38.00.

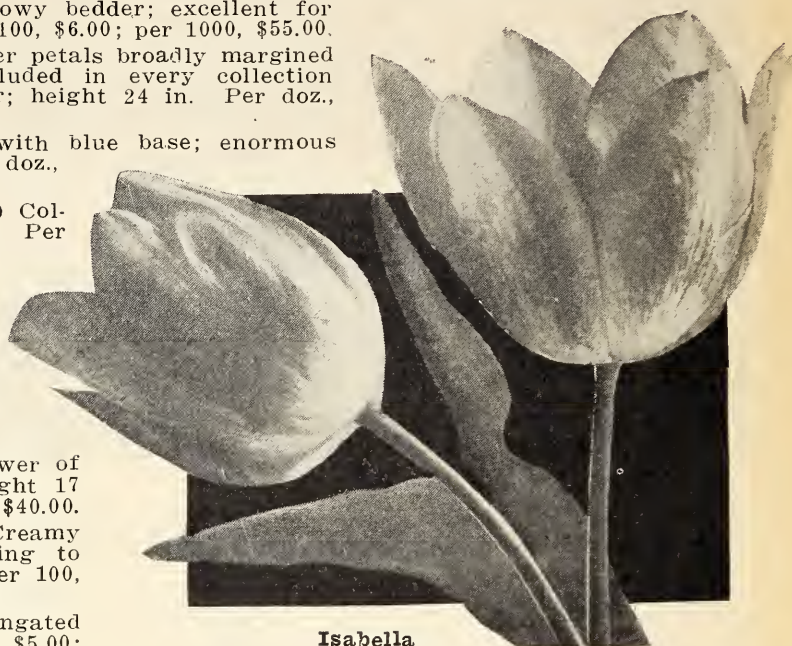
Moonlight. Large pale yellow; distinct elongated flower; height 22 in. Per doz., 70c; per 100, \$5.00; per 1000, \$48.00.

***Mrs. Moon.** Very deep yellow; height 24 in. Per doz., 75c; per 100, \$5.50; per 1000, \$52.00.

Picotee. (Maiden's Blush.) White, margined rose pink; graceful, recurving petals; height 20 in. Per doz., 60c; per 100, \$4.00; per 1000, \$38.00.

Sir Harry. A new variety of beautiful lavender-pink; height 24 in. Per dozen, \$1.25; per 100, \$7.50; per 1000, \$70.00.

The Fawn. The coloring is a unique shade of pale rosy fawn, changing to blush-rose; height 20 inches. Per dozen, 60c, per 100, \$4.00; per 1000, \$38.00.



Isabella

John Ruskin. Salmon-rose, edged soft lemon-yellow, inside deep rosy like lilac—a beautiful combination of colors; large flower of fine shape on a graceful stem; height 17 in. Per doz., 75c; per 100, \$5.50; per 1000, \$48.00.

Single Late, May Flowering Mixed. A splendid mixture. Per dozen, 50c; per 100, \$4.00; per 1000, \$30.00.

Striped and Feathered May Flowering

PARROT OR DRAGON

Their fringed and corrugated petals with their wonderful variation make these the most brilliant and the most curious of all Tulips. The flowers are thick-petaled with extra long stems, and keep extremely well after being cut.

Admiral de Constantinople. Red tipped orange. 65c per doz.; \$5.00 per 100.

Lutea major. Bright yellow; large flowers. 65c per doz.; \$5.00 per 100.

Cramoisi Brilliant. Deep crimson with large, black, star-shaped center. 65c per doz.; \$5.00 per 100.

Superfine Mixed. 60c per doz.; \$4.25 per 100.

BIZARRES AND BYBLOEMS

Bizarres. 20-L. Mixed; flowers beautifully blotched, striped and feathered with crimson, pink, scarlet, rose, lilac, and purple on yellow. 70c per doz.; \$4.50 per 100.

Bybloems. 20-L. Mixed; on white ground, blotched, striped or feathered. 70c per doz.; \$4.50 per 100.

REMBRANDT TULIPS

Late Flowering for Open Ground

These late Tulips are much like the Darwins but are striped and feathered, in this respect resembling the Bybloems formerly so much used. They are of fine form and substance, lasting well after cutting. Average height 18 to 22 inches.

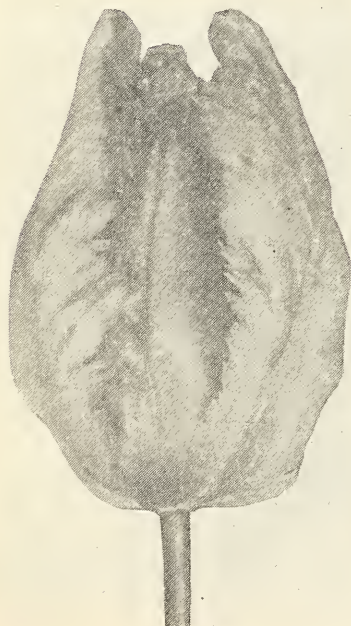
Apollo. Lilac-rose and white, striped dark carmine. 75c per doz.; \$5.00 per 100; \$50.00 per 1000.

Caracalla. White, striped and feathered carmine-red. Very attractive. 80c per doz.; \$6.00 per 100; \$50.00 per 1000.

La Coquette. Violet, flamed purple and white; not large but an exquisite flower. 85c per doz.; \$6.00 per 100; \$50.00 per 1000.

Marco Spado. White, flamed bright carmine-red; large flower. \$1.00 per doz.; \$9.00 per 100; \$75.00 per 1000.

Rembrandt Mixed. Darwin Tulips with striped or feathered flowers. Many pleasing shades and colors. 65c per doz.; \$5.00 per 100; \$40.00 per 1000.



Admiral de Constantinople

Single Early Tulips

FOR APRIL BLOOMING OUTDOORS
POTS AND FORCING



For grand effect as an early flower, the Tulip probably heads the list of bulbous plants. They are so entirely hardy, easily cared for, flower so freely in city or country, sun or shade, and as, with proper selection of varieties, their flowers may be enjoyed from April to June, it naturally follows that they are becoming immensely popular. By planting Scillas, Crocus, Snowdrops, etc., between the bulbs, the same bed or space of ground will provide a beautiful display of these early gems, preceding and in no manner interfering with the Tulips. Named varieties are to be preferred for satisfying results, and as we give the average height and relative blooming season of most of the varieties, selections as to color and season may be readily made. Plant 5 to 6 inches apart and cover $1\frac{1}{2}$ or twice their depth. For house culture plant four to six bulbs in a 6-inch pot, and in proportion for the larger sizes or bulb pans, treat as advised for Hyacinths. Good roots and plenty of them, before bringing plants to light and warmth are essential to success.

The figures after names of varieties indicate the average height, in inches, to which they grow. Varieties most suitable for forcing are indicated by a star (*). The letter E. indicates those that bloom earliest, and L. latest.

NAMED SINGLE EARLY TULIPS

- Artus.** 7-L. Brilliant scarlet with clear yellow center. A splendid bedder. 65c per doz.; \$4.25 per 100; \$38.00 per 1000.
- ***Belle Alliance.** 8-L. Large, sweet-scented, scarlet flower. 70c per doz.; \$5.00 per 100; \$48.00 per 1000.
- Chrysolora.** 8-L. Pure golden yellow; splendid bedder. 60c per doz.; \$4.50 per 100; \$38.00 per 1000.
- Cottage Maid.** 9-L. Carmine-pink, center of petals feathered white. A very dainty bedding variety 70c per doz.; \$5.00 per 100; \$46.00 per 1000.
- Couleur Cardinal.** 10-L. A bright crimson-scarlet, with a deeper tone or bloom on the outer petals. A bed planted wholly to this variety is a grand sight. Grand for midseason forcing. \$1.00 per doz.; \$7.00 per 100; \$60.00 per 1000.
- Cramoise Royal.** 15-E. A distinct satiny carmine. \$1.25 per doz.; \$9.00 per 100; \$80.00 per 1000.
- Crimson King.** 8-L. Bright deep crimson, large and showy, easily forced. Good bedder. 60c per doz.; \$4.50 per 100; \$38.00 per 1000.
- Cullinan.** 13-E. Fine rosy-pink with white in the center of petals. 90c per doz.; \$6.75 per 100; \$68.00 per 1000.
- De Wet.** 17-E. (Fireglow.) Beautiful golden flushed and striped fiery orange-scarlet. \$2.75 per doz.; \$22.00 per 100.
- Duchesse de Parma.** 9-L. Deep orange-scarlet, bordered yellow; large, globular flower. A very showy bedding Tulip; fine early forcer. 85c per doz.; \$6.00 per 100; \$56.00 per 1000.
- Gold Finch.** 12-E. Pure yellow; sweet scented. 65c per doz.; \$4.50 per 100; \$40.00 per 1000.
- Ibis.** 14-E. (New.) Deep brilliant pink-shaded carmine. \$1.25 per doz.; \$9.50 per 100; \$75.00 per 1000.
- Keiserkroon.** 10-L. Carmine scarlet with broad yellow border. 80c per doz.; \$6.50 per 100; \$60.00 per 1000.
- ***King of the Yellows.** 10-L. Deep golden yellow; one of the earliest yellows; flowers egg-shaped and fine for cutting. Fine for forcing as well as bedding. 70c per doz.; \$4.25 per 100; \$40.00 per 1000.
- Lady Boreel.** 13-E. (Joost Van Vondel White.) Snowy white; large, long flower of splendid shape. The finest white for bedding and superb for pots or pans. Cannot be forced so early as White Hawk. 70c per doz.; \$5.00 per 100; \$46.00 per 1000.
- Pink Beauty.** 10-L. Bright cherry rose, center of petals striped white. It has no equal as a bedder for the stem is strong and the white center of the big, fleshy petals show up very conspicuously against the broad, vivid rose edges. Does well in pans, but not before March. \$1.10 per doz.; \$8.00 per 100; \$78.00 per 1000.
- President Lincoln.** 12-E. (Queen of the Violets.) Purplish mauve with white base. 70c per doz.; \$5.00 per 100; \$48.00 per 1000.
- ***Prince of Austria.** 10-E. Brilliant copper red, deliciously scented; tall-stemmed bedder. 70c per doz.; \$4.75 per 100; \$42.00 per 1000.
- ***Proserpine.** 10-E. Rich, silky, carmine rose. Extra fine. \$1.00 per doz.; \$7.00 per 100; \$65.00 per 1000.
- Prosperity.** 8-E. Bright clear pink, very attractive. Good for early forcing. \$1.00 per doz.; \$7.50 per 100; \$70.00 per 1000.
- ***Vermilion Brilliant.** 10-L. Dazzling vermilion scarlet, with yellow base. \$1.00 per doz.; \$7.25 per 100; \$70.00 per 1000.
- ***White Hawk.** 8-L. Intense white. 70c per doz.; \$5.25 per 100; \$50.00 per 1000.
- Yellow Prince.** 8-L. Golden yellow; fine bedder. 60c per doz.; \$4.25 per 100; \$40.00 per 1000.

JOHNSON'S RAINBOW MIXTURE OF SINGLE EARLY TULIPS

A mixture consisting of named single varieties, blended so as to give an assortment of all possible colors and shades, all of vigorous habit and large size, uniform height and time of blooming. 50c per doz.; \$3.50 per 100; \$32.00 per 1000.

Double Early Tulips

**FLOWER JUST AFTER EARLY
TULIPS IN LATE APRIL**

Double Tulips are preferred by some for their massiveness of bloom and for their brilliant and striking colors. The blooms are much more lasting than the single kinds making them very popular for pots and pans. Care should be taken, however, when growing this way not to force too rapidly as the grandeur and lasting qualities of the blooms are lessened by excessive forcing.

For growing in beds and borders we suggest only one color; however, certain varieties blend well together and we are always glad to recommend good sorts for this purpose.

Note.—The figures after names of varieties indicate average height in inches to which they grow. Varieties most suitable for forcing are indicated by a (*). The letter E indicates those that bloom earliest and L latest.

JOHNSON'S SINGLE AND DOUBLE EARLY TULIP COLLECTIONS

100 Single Early Tulips made up of 10 named varieties all packed in separate bags and marked. Bloom late in April or early May. Per 100, \$4.00.

100 Double Early Tulips made up of 10 named varieties, all packed in separate bags and marked. Bloom in late April or early May. Per 100, \$4.50.

Vuurbaak. 12-L. Bright scarlet; splendid bedder large well-shaped flowers on strong stems. \$1.00 per doz.; \$7.00 per 100; \$68.00 per 1000.

Remember that all bulbs sold or offered for sale by Johnson's Seed Store are the best that the best growers in their respective countries of production can produce. We do not handle "seconds" or inferior stock of any kind

Boule de Neige. 10-E. Finest pure white double variety. 85c per doz.; \$6.00 per 100; \$55.00 per 1000.

Bleu Celeste. 15-L. (Blue Flag.) Extra fine large double violet-blue. 80c per doz.; \$5.75 per 100; \$55.00 per 1000.

Cochineal. 10-L. Rich, brilliant scarlet; the largest and one of the best double scarlets. When forcing this variety, as well as any other scarlet, care should be taken to have them come slowly, to avoid green tips. 75c per doz.; \$5.50 per 100; \$55.00 per 1000

Couronne d'Or. (Crown of Gold.) 10-L. Large, bold flower of rich golden yellow, shaded copper. Excellent for bedding and Winter forcing. 85c per doz.; \$6.00 per 100; \$55.00 per 1000.

Electra. (New.) 14-E. Rosy-violet. \$1.50 per doz.; \$9.50 per 100; \$90.00 per 1000.

Gloria Solis. 10-E. Red bordered with gold. 65c per doz.; \$5.25 per 100; \$48.00 per 1000.

***Imperator Rubrorum.** 10-L. Glowing scarlet. Very popular. 90c per doz.; \$6.75 per 100; \$62.00 per 1000.

La Candeur. 10-L. Pure white; very fine bedder. 75c per doz.; \$5.50 per 100; \$50.00 per 1000

Lacq of Haarlem. 13-L. Beautiful rosy-violet. \$1.25 per doz.; \$8.50 per 100; \$80.00 per 1000.

Mr. Van der Hoeff. (New.) Purest yellow. \$1.25 per doz.; \$8.50 per 100; \$80.00 per 1000.

***Murillo.** 12-L. Light pink; most popular forcer. 65c per doz.; \$4.50 per 100; \$42.00 per 1000.

Peach Blossom. 12-L. Bright rose-pink, flushed white, deepening with age to carmine-rose; large. A sport of Murillo. Excellent for pots. \$1.25 per doz.; \$9.50 per 100.

***Rubra Maxima.** 10-L. Splendid red. 75c per doz.; \$5.00 per 100; \$45.00 per 1000.

***Salvator Rosa.** 10-E. Deep rose. Leading double for forcing. 75c per doz.; \$5.75 per 100; \$52.00 per 1000.

Schoonoord. 12-L. The white Murillo and the finest of all double white. 75c per doz.; \$5.50 per 100; \$48.00 per 1000.

***Titian.** 14-E. Brilliant scarlet with a narrow yellow edge. 75c per doz.; \$5.50 per 100; \$55.00 per 1000.

Tea Rose. (Brimstone.) 12-L. A beautiful saffron-yellow or apricot. A "sport" from Murillo with all its good qualities. 70c per doz.; \$5.00 per 100; \$48.00 per 1000.

Toreador. 10-L. Very large and double flowers, bright scarlet, bordered orange scarlet, very effective. \$1.00 per doz.; \$7.50 per 100; \$70.00 per 1000.



Imperator Rubrorum

JOHNSON'S RAINBOW MIXTURE OF DOUBLE EARLY TULIPS

This mixture is made up of the most suitable varieties as regards color and height. 50c per doz.; \$3.50 per 100; \$32.00 per 1000.

Top-Root Exhibition Hyacinths

A larger and better matured bulb than the ordinary exhibition size

Outdoor Culture.—The bulbs may be planted any time from October to December. They succeed in any good, well-drained garden soil. Set the bulbs so that the tops will be 3 or 4 inches below the surface and 6 to 10 inches apart. Before very severe weather comes on, cover the beds with straw, leaves or manure, to protect them from the frost; this should be removed when danger from hard frost is past in the spring.

For Pots, Bowls or Boxes.—Use porous soil thoroughly mixed with well-rotted manure and some sand, not omitting some drainage. A single bulb will require a 5-inch pot. Allow same proportionate space, when planting a number of bulbs in larger pots or window-boxes. Remove any sprouts there may be at the base of the bulbs. Plant the bulbs two-thirds below the surface, water thoroughly and place in a cool, dark but airy situation until the roots are well established, then bring to the light. A temperature of 50 degrees, gradually increased to 60 degrees, will be a factor in securing the finest spikes and brightest colors.

For Glasses.—Use only select bulbs for this purpose. Fill the glass with clear, soft water, allowing the base of the bulb to barely touch the water. Place in a cool, dark location, letting them remain there until the roots nearly touch the bottom of the glass; then bring them to light. Renew the water as it evaporates, or renew if it becomes offensive. As with pot-grown plants cool treatment will improve the quality of the blooms and render them more durable.

Prices, except where noted, 30c each; \$3.00 per doz.; \$20.00 per 100.

Arentine Arendsen. The spike is unusually well filled and has a perfect round shape. The broad wide-open petals are of intense whiteness.

City of Haarlem. Undoubtedly the finest yellow for exhibition. Soft Naples-yellow, shaded deeper.

Correggio. Another good exhibition white which produces a large spike of perfect shape. Bells large.

De Wet. A pale pink sport of Grand Maitre; quite the lightest pink in our list.

Dr. Lieber. Deep porcelain-blue, very much like the old Charles Dickens. A splendid grower with a good spike.

Duke of Westminster. Deep purplish-blue. Extra large bells with white center.

Electra. An immense, pyramidal truss of pale blue; very fine and the palest in our list.

Enchantress. Another pale blue variety which does equally well for exhibition; a trifle darker than Electra.

General Van der Heyden. A unique shade of lilac-blue; an excellent truss of large, shiny bells.

General Vetter.
Opens pale bluish white changing to almost pure white. Resembles the grand Maitre type of bloom.

Gertrude. Fine dark pink; compact spike. Fine for pots.

Grand Maitre. A leading deep lavender-blue. The bright blue bells form an elegant, somewhat loose spike of immense size and perfect shape.

King of the Blues. One of the largest flowers; splendid, well-finished truss of a most brilliant shade of indigo-blue.

Lady Derby. A very good salmon-pink and one that grows very well. Darker than De Wet; long spike, bells well placed.

La Grandesse. Another good standard white similar in habit to Arentine Arendsen. Long spike but bells are somewhat more compact.

L'Innocence. Pure white, bells and truss of largest size; the best all around white; always does well.

La Victoire. Without a doubt the finest brilliant scarlet-red in cultivation, although paler when forced.

Lord Balfour. A unique shade of lilac-rose, tinged dark violet, a distinct color; broad spikes of big waxy bells. Best variety of violet shades.

Marconi. This grand novelty is much like Queen of the Pinks, in color: the spike is broader, but well filled and nicely formed.

Queen of the Blues. The most popular of light blues.

Queen of the Pinks. A very lively shade of bright pink and has a splendid well-formed spike, if not forced too hard.

Yellow Hammer. Creamy-yellow, compact spike and large bells.



Selected First Size Hyacinths

Single-flowering varieties are principally grown both in indoor and outdoor culture. They force more readily and as a rule, produce larger and finer spikes of flowers than double-flowering varieties. Double Hyacinths are entirely satisfactory for bedding or pot culture, but require a longer season for their development.

Price of Hyacinth Bulbs, except where noted, 18c each; \$1.75 per doz.; \$12.00 per 100.

SINGLE PINK, ROSE AND RED

- Garibaldi.** Deep crimson-red; large spike. Considered one of the best reds for early forcing.
- Gertrude.** Dark pink; compact spike. Fine for pots.
- Gigantea.** Light Pink; large truss. Fine for pots.
- Lady Derby.** Clear rose-pink; splendid spike, with large bells. Excellent forcing variety; quite the finest of all the rose-pink Hyacinths.
- La Victoire.** (Victory.) Brilliant dark pink. There is no brighter bedder. When planted outside, its color is a brilliant red and the beauty of it is that the color is plainly visible as soon as the bud appears, which makes a bed of Victoire attractive when other varieties show green buds only.
- Moreno.** Bright rose; heavy truss; large bells.
- Roi des Belges.** Clear rosy carmine; medium-sized but compact truss.
- Queen of Pinks.** (New.) Brilliant pink; long, compact spike. One of the finest varieties.

SINGLE BLUE, PURPLE AND VIOLET

- Enchantress.** Delicate porcelain blue, flushed paler; unusually long and full spike with large bells.
- Grand Lilas.** Dark lilac; splendid for bedding and forcing.
- Grand Maitre.** Dark lavender-blue; large bells and very long, well-filled truss on an unusually strong stem.
- King of the Blues.** Rich, dark blue; splendid spike and bells. Fine for late forcing.
- Lord Balfour.** Lilac-rose, tinged dark violet, a distinct color; broad spike.
- Perle Brilliant.** Light lavender-blue, a very handsome sort. Fine for pots and early forcing.
- Schotel.** Soft blue, shaded lilac; fine, large spike and bells.
- Queen of the Blues.** Unexcelled as a light blue.

SINGLE YELLOW

- Buff Beauty.** Pale yellow, striped dark straw yellow, with a flush of rosy flesh on back of bells. Long narrow truss with good bells and stem.
- Yellow Hammer.** Creamy yellow; fine, compact spike and large bells. One of the best standard yellows for pot culture.

SINGLE WHITE AND BLUSH

- Arentine Arendsen.** Pure snowy white; rather open, wide-petaled bells on narrow, well-filled spike.
- General Vetter.** Blush-tinted bells; long, well-formed spike.
- La Grandesse.** Pure white; long, full spike of perfect form, with waxy bells. Considered the best standard white for bedding.
- L'Innocence.** Pure white; excellent truss, with large bells of great substance. One of the best Hyacinths for pot culture.

PREPARED BULB FIBRE

This material is very popular for growing bulbs in, and is especially adapted for use in the home, being clean and odorless, and as it is light in weight, can be sent to a distance at small expense.

It contains all the necessary plant food for almost all kinds of plants. **Qt. 20c; ½ Fk., 50c; Pk., 85c. Postage 5c extra per qt.**



Enchantress

NAMED DOUBLE HYACINTHS

Selected First Size.

Price, any of the first-size named Double Hyacinths offered below, 18c each; \$1.75 per doz.; \$12.00 per 100.

DOUBLE ROSE, ETC.

- Chestnut Blossom.** Bright Rose pink.
- President Roosevelt.** Bright lively pink; very large truss.

DOUBLE PURE AND TINTED WHITE

- Isabella.** The finest double bluish-white; large bells and spike.
- Double La Grandesse.** The double flowering form of the well-known single pure white; extra fine.

DOUBLE BLUE, ETC.

- Bloksberg.** Finest light porcelain blue.
- Garrick.** Deep azure blue; very large spike.

DOUBLE YELLOW

- Sunflower.** Considered the finest double pure yellow.

HYACINTH GLASSES



We have two patterns in Hyacinth Glasses—**Tall** and **Tye**. Price of either; **Each 40c, dozen, \$4.25.** Price does not include transportation. Should always go by express.



Standard Size Hyacinths

This grade is the best value offered in Hyacinths; the bulbs being of the same age as First Size but falling just below the required measurements of the latter; hence the important reduction in price.

For outdoor planting in beds and borders, they are preferable to their larger brothers; the flower spikes not being quite so heavy, endure much better the occasional rough winds during springtime.

We recommend the following for size of flower, good resistance against weather and for forcing quality:

Price of Standard Size Hyacinth Bulbs, except where noted, 12c each; \$1.25 per doz.; \$8.50 per 100

PURE WHITE AND BLUISH WHITE

La Grandesse. Snow white; large bells, very shapely truss.

L'Innocence. Pure white.

Madame van der Hoop. Almost pure white; large bells. Medium early.

Baroness van thuyll. Pure white.

Arentine Arendsen. Snow white.

YELLOW SHADES

City of Haarlem. Golden yellow, undoubtedly the grandest variety among the yellows. The color is of the purest golden yellow, and the truss is large and well formed.

Yellow Hammer. Golden yellow; forces easily, fine spike.

Sunflower. Deep buff yellow.

RED, ROSE AND PINK

La Victoire. (Victory.) Brilliant dark pink. There is no brighter bedder.

Gertrude. Dark pink; fine for pots.

Gigantea. Blush pink; large head.



Rosea Maxima

Moreno. Waxy pink; large bells; very early.

Rosea Maxima. Delicate pink; loose truss.

Robert Steiger. Deep red; Spendid bedder.

Queen of the Pinks. Delicate, soft pink.

BLUE SHADES

Grand Lilas. Dark lilac; splendid for bedding and forcing.

Grand Maitre. Deep lavender blue, shaded a darker blue.

King of the Blues. Rich, dark blue; large flowers. Fine for bedding.

Queen of the Blues. Unexcelled as a light blue.

JOHNSON'S GRASS SEED MIXTURES

They are especially arranged to prevent the stronger growing varieties from choking out the finer sorts. The proper "balancing" of mixtures suitable to different conditions is the secret of a smooth turf.

Full descriptions of our different mixtures will be found on back cover.

UNNAMED HYACINTHS FOR FORCING AND BEDDING

Colors Separate. Single and Double Varieties.

They are well adapted for open ground planting in mixed borders and informal beds, and on account of their low price are also extensively forced for Winter blooming and cutting.

	Doz.	100	1000		Doz.	100	1000
Dark Blue	\$0.85	\$6.50	\$57.50	Blush White	\$0.85	\$6.50	\$57.50
Light Blue	.85	6.50	57.50	Yellow	.85	6.50	57.50
Red and Rose	.85	6.50	57.50	Purple	.85	6.50	57.50
Light Pink	.85	6.50	57.50	All Colors Mixed	.85	6.50	57.50
Pure White	.85	6.50	57.50				

MINIATURE DUTCH ROMAN HYACINTHS

These are charming, single-flowered varieties that can be used for pots, bowls, boxes, or bedded in the garden. They may be grown in fiber with good results; plant quite close together.

All at 65c per doz.; \$5.00 per 100; \$45.00 per 1000.

Gertrude. Clear pink.

Gigantea. Delicate rose.

King of the Blues. Dark Blue.

Garibaldi. Glowing carmine, early.

La Grandesse. White.

Moreno. Lovely pink.

Queen of the Blues. Azure blue.

EARLY FLOWERING FRENCH ROMAN HYACINTHS

These are used very extensively for forcing. The flowers, smaller than those of the preceding class, are more freely produced, two or more spikes shooting from a single bulb. Treat same as Dutch Hyacinths, in pots or boxes. The white variety, if planted early and gently forced, will bloom in December. The others are three or four weeks later. A 4-inch pot is large enough for a single bulb. Allow proportionate space when planting in larger boxes or pots.

	Doz.	100
White, Mammoth Bulbs, 13-15 cts.	\$1.65	\$12.00
Single Rose. First-sized bulbs	1.50	10.00
Single Blue. First size bulbs	1.50	10.00
Single Yellow. First-size bulbs	1.50	10.00

AZALEIA POTS

These pots are better adapted for growing Hyacinths for exhibition than those generally used. Being deeper than bulb pans, they permit better root growth and insure better spikes of bloom. We carry all sizes of these pots.



Narcissi or Daffodils

We offer only the most popular varieties for either pot or outdoor culture.

Culture. Daffodils are not particular as to soil and will thrive for a number of years in ordinary soil. They are, with few exceptions, suitable for naturalizing and while preferring partial shade, will thrive in full sun exposure. They are very desirable for pot culture, three to five bulbs in a 5- or 6-inch pot producing an attractive group. By planting one or more varieties in succession, a fine display may be enjoyed throughout the first three months of the year.

GIANT TRUMPET VARIETIES

Cornelia. A uniform soft-yellow, the perianth being broad and smooth with a well-expanded trumpet. Splendid exhibition sort. Height 18 inches. 20c each; \$2.00 per doz.; \$15.00 per 100.

Duke of Bedford. White perianth, with loose, spreading petals and long, deep yellow trumpet well frilled at the mouth. The marked contrast in color between the deep trumpet and the glistening white perianth is very effective. A splendid exhibition sort. Height 16 inches. 35c each; \$3.50 per doz.; \$28.00 per 100.

Emperor. Perianth deep primrose-yellow, trumpet rich yellow; a very large flower of wonderful substance. Excellent for naturalizing or forcing. Height 18 inches.

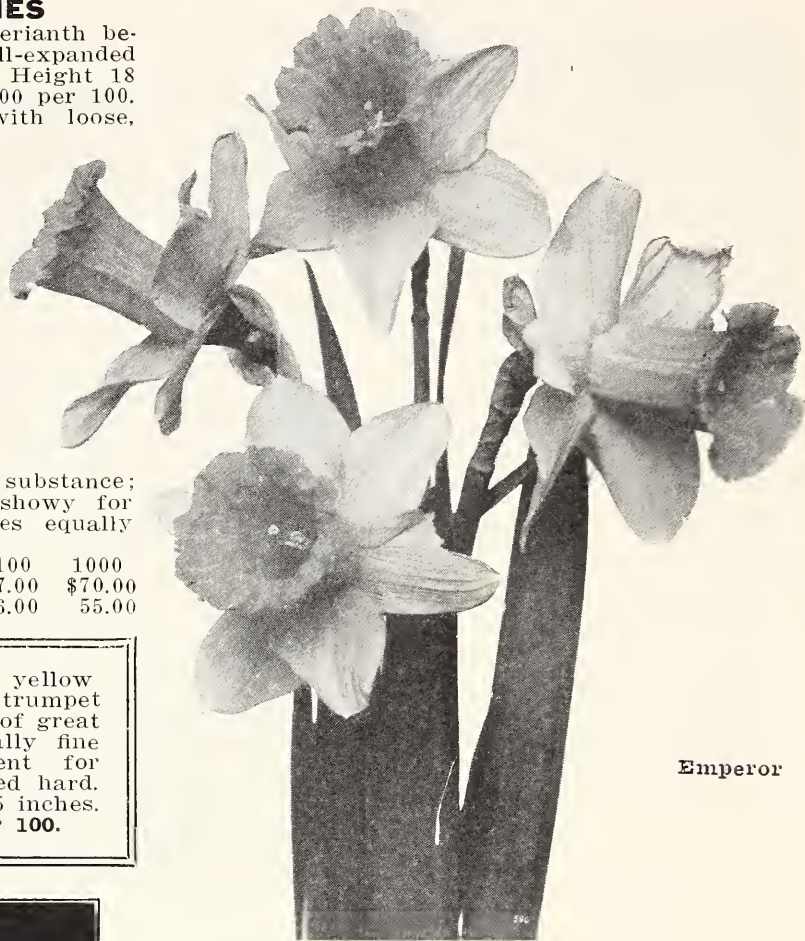
Mammoth Jumbo bulbs, \$1.25 per doz.; \$8.00 per doz.; \$75.00 per 1000.

First Size, round bulbs, 85c per doz.; \$6.00 per 100; \$55.00 per 1000.

Empress. White perianth of great substance; Trumpet rich chrome-yellow. Very showy for the border or for naturalizing. Does equally well when forced. Height 18 inches.

	Doz.	100	1000
Mammoth Jumbo bulbs -----	\$1.25	\$7.00	\$70.00
First-size, round bulbs -----	.90	6.00	55.00

Glory of Leyden. Perianth pale yellow broad and spreading, very long trumpet of golden yellow; enormous flower of great vigor and substance. An especially fine variety for borders and excellent for pot culture. Should not be forced hard. Must be planted early. Height 15 inches. 15c each, \$1.50 per doz.; \$10.00 per 100.



Emperor

Glory of Sassenheim. One of the best and most attractive of the Bi-colors; perianth sulphur white, trumpet chrome-yellow, very long and elegantly reflexed at the brim; of good size and substance. Grand for pots or cutting. Height 14 inches. 20c each; \$2.00 per doz.; \$15.00 per 100

Golden Spur. Native of the Netherlands. Large-lobed trumpets, rich deep self-yellow, perianth large and spreading; early. Extra fine bulbs. Is freer and more reliable than Trumpet Major.

	Doz.	100	1000
First-Size -----	\$0.85	\$6.00	\$55.00
Double-Crown Jumbo bulbs ---	\$1.25	\$8.00	75.00

King Alfred. A king among the new varieties, one that responds splendidly to forcing and one that you should grow a few of. For pans and pots for exhibition, its size, general vigor, and depth of color put it in a distinct class of the **Finest Giant Golden Yellow Narcissi**. Wherever exhibited has caused a sensation. Perianth often measures 4 inches across, trumpet fully 2 inches. Jumbo size, 30c each; \$3.00 per doz.; \$20.00 per 100.

Mme. de Graaff. Pure white perianth, trumpet primrose yellow, passing into white, well-formed at the brim. A good white for exhibition, or growing for decoration. Bulbs should be removed from containers immediately upon receipt, and planted; if permitted to remain will quickly decay. Height 15 inches. Jumbo size, 15c each; \$1.50 per doz.; \$10.50 per 100.



Glory of Leyden

GIANT TRUMPET NARCISSI—CONTINUED

Olympia. One of the finest of the new Trumpet varieties, a strong, free grower either in pots or out-of-doors. It might briefly be described as a greatly improved Emperor, being much larger in size and richer in color. One of the coming Daffodils. 25c each; \$2.50 per doz.; \$18.00 per 100.

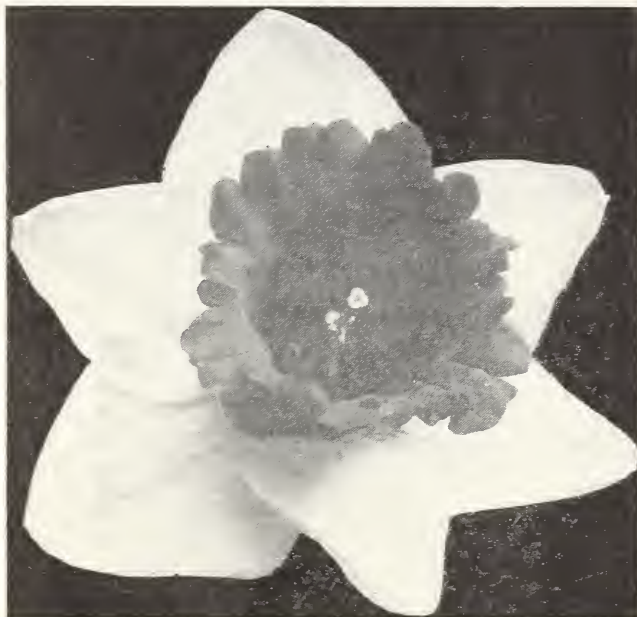
Princeps. Sulphur perianth and yellow trumpet; long and showy; early and forces finely. First size, 60c per doz.; \$5.25 per 100. Double-crown bulbs, 75c per doz.; \$5.75 per 100.

Spring Glory. Clear white perianth with long petals of splendid form, long trumpet of deep yellow, well reflexing at the brim. A very vigorous grower and one of the best of the newer Daffodils for pot culture. Jumbo size, 40c each; \$4.00 per doz.; \$30.00 per 100.

Victoria. Large, erect flowers; creamy white perianth and rich yellow trumpet; forces easily. The earliest of Bi-colors. First size, 80c per doz.; \$5.50 per 100. Jumbo size, double crown bulbs, \$1.25 per doz.; \$8.00 per 100.

Van Waveren's Giant. A famous Holland variety. A veritable "Giant" among the "trumpets" producing freely immense flowers on strong stems 18 inches in length; trumpet very large with open mouth flanged at the brim. Color rich yellow perianth, petals primrose yellow; Height 18 inches. Jumbo size, 40c each; \$4.00 per doz.; \$30.00 per 100.

Spring Glory. Clear white perianth with long petals of splendid form, long trumpet of deep yellow, well reflexing at the brim. A very vigorous grower and one of the best of the newer Daffodils for pot culture. 20c each, \$2.00 per doz.; \$15.00 per 100.



Victoria

Double Narcissi-Daffodils

The Double-flowering Daffodils offered in our list may be planted outdoors, but are admirably adapted for indoor growing in pots and pans., or may be forced in flats for cutting purposes



Silver Phoenix

OLD FASHIONED YELLOW DOUBLE

Von Sion. This, the most popular of Double Narcissi, is famous as the Old Double Yellow Daffodil. Rich golden yellow perianth and trumpet. This is one of the best winter-flowering and forcing sorts. Height 18 inches. This grade of Double Von Sion is selected specially for us from the **very largest double-nosed bulbs**, and are what is termed top-roots. Our large importations of this variety make it possible for us to secure this very fine grade of bulbs. Three bulbs planted in an 8-inch bulb-pan make an excellent show, and give four or five strong and perfect blooms.

	Doz.	100	1000
Jumbo Exhibition Grade	\$1.00	\$7.00	\$70.00
Mammoth Double-nose.			
Will produce two or			
three fine flowers.....	.90	6.00	55.00
Selected Single-nose. Will			
produce one fine flower..	.75	5.00	45.00

OTHER DOUBLE NARCISSI

Alba plena odorata. (The double White Poet's Narcissus, or Gardenia-flowered Daffodil.) D. Double, snow-white, gardenia-like flowers exquisitely scented. Height 15 inches. 10 each; 65c per doz.; \$5.00 per 100; \$45.00 per 1000.

Orange Phoenix (Eggs and Bacon.) D. Beautiful, double, white flowers, with orange nectary. Splendid for pot culture and cutting, and for garden decoration. Height 17 inches. 10c each; 75c per doz.; \$6.00 per 100; \$55.00 per 1000.

Sulphur (or Silver) Phoenix. (Codlins and Cream.) D. Large, creamy white flowers, sulphur nectary. Exquisite corsage flower; fine for growing in pots. Height 18 inches. 10c each; 85c per doz.; \$6.00 per 100; \$55.00 per 1000.

PRIMROSE PHOENIX. Beautiful lemon-yellow. Very showy, large rose shaped flower of a lovely soft shade. 30c each; \$3.00 per doz.; \$20.00 per 100.

Medium Trumpet Narcissi or Daffodils

This is also a very popular type or rather types of the Narcissus or Daffodil family. Splendid for garden culture, in pots or pans, or in flats, for cut-flowers.

The following varieties are grouped in some catalogues under the headings, Barrii, Incomparabilis and Leedsii types.

Note—"Perianth" is surrounding row of petals, or wings; "crown" or "cup" is the central cup or funnel-like tube.

BARRII. Daffodils belonging to this group are crosses between Yellow Giant Trumpets and the Poet's Narcissi. The crown usually is not over one-third the length of the perianth petals.

INCOMPARABILIS. The Incomparabilis varieties are also crosses between the Yellow Giant Trumpets and the Poet's Narcissi but the crowns are larger than those of the Barrii group, sometimes being three-fourths of the length of the perianth petals. The color is either yellow or white.

LEEDSII. These are crosses between White Giant Trumpets and Poet's Narcissi. The crowns are as large as those of the Barrii and Incomparabilis groups, but the perianth petals are always white, and the crowns are mostly white or light yellow.

Albatross (Barrii.) Large, flat, white perianth; cup pale citron, deep yellow-edged, and elegantly frilled at the brim. Splendid forcing and garden variety. Height 20 inches. 15c each; \$1.25 per doz.; \$8.00 per 100; \$75.00 per 1000.

Beauty. (Incomparabilis.) Sulphur yellow perianth, large yellow cup,, marginal deep orange, scarlet flower, bold and strong and an excellent grower. 15c each; \$1.25 per doz.; \$8.00 per 100.

Frank Miles (Incomparabilis) Perianth pale yellow, elegantly twisted; cup bright yellow; large flowers. Effective planted in clumps in the border; also grown extensively for cutting; very Good for pot culture. Height 21 inches. 10c each; 90c per doz.; \$6.00 per 100; \$55.00 per 1000.

Lady Godiva. (Barrii.) Large, spreading perianth of pure white, cup large, pale yellow, edged orange-scarlet. A splendid variety in every way; excellent if planted out in combination with the variety Conspicuus. Height 18 inches. 10c each; 75c per doz.; \$6.50 per 100; \$60.00 per 1000.

Lucifer. (Incomparabilis.) Perianth sulphur-white, with long, well-rounded petals; cup chrome-yellow, with intense orange-scarlet suffusions. A bold, showy flower for outdoors, holding its color well, and splendid for exhibition. Height 18 inches. 10c each; \$1.00 per doz.; \$6.50 per 100; \$60.00 per 1000.



Paper White Narcissi

Sir Watkin. (Giant Chalice Flower.) A gigantic flower, the largest in this section; perianth sulphur yellow, cup slightly deeper in color and tinged with orange; fine for pot culture; in fact does well everywhere. Large bulbs. Jumbo Mother Bulbs, 15c each; \$1.25 per doz.; \$8.00 per 100; \$75.00 per 1000.

White Lady. (Leedsii.) Broad, white perianth of perfect form; small cup of pale canary, beautifully crinkled. A new sort that is conceded to be one of the best. Fine for outdoor planting, making a splendid cut-flower; good for pot culture also. Height 20 inches. 15c each; \$1.25 per doz.; \$8.00 per 100; \$75.00 per 1000.

POLYANTHUS NARCISSI VARIETIES FOR EARLY FORCING Suitable for Growing in Water

The varieties **Paper-White Grandiflora**, **Grand Soleil d'Or**, and **Double Roman** we list below. These are grown for us in the south of France. They arrive in this country in August and are used principally by the florists for forcing. As these varieties are matured earlier in the south of France than in Holland, they may be brought to flower in the house or green-house in December or January, if potted in September.

Grand Soleil d'Or. A very popular yellow bunch-flowering variety of the Polyanthus type. Flowers a clear, sunny yellow, with bright orange cups. Excellent for early flowering indoors. 15c each; \$1.50 per doz.; \$12.00 per 100; \$95.00 per 1000.

GIANT PAPER WHITE GRANDIFLORA

Suitable for Growing in Water

This large-flowering Paper-White Narcissus is such an improvement over the ordinary Paper-White that we have decided to discontinue the sale of the latter. It can be had in bloom from Christmas to Easter. Plant bulbs in shallow boxes or pots so that they almost touch each other, and store in a cool cellar or shed until rooted. By bringing into the light during early November they may be had in bloom for Christmas. Excellent results can be obtained by growing in bowls of water and pebbles or moss, the same as the Chinese Sacred Lilly. Prepaid by mail or express to your home.

	Doz.	100	1000
Jumbo bulbs.....	\$0.85	\$6.00	\$55.00
Mammoth bulbs.....	.65	5.00	45.00
Standard size bulbs.....	.50	4.00	35.00

BULB BOWLS. All sizes, styles and colors. Prices from 25c to \$4.00 each.

PEBBLES. Carefully screened and selected White Pebbles, 15c per quart. White PEARL chips, 20c per pound.

JONQUILS

Narcissus, Jonquilla and Odonus

Jonquils are a small-flowering type of Narcissus and prized for their graceful, golden fragrant blossoms and the ease with which they may be grown. The single varieties may be flowered by Christmas. Very easily grown and should be planted in quantity for cutting for their exquisite fragrance. Five or more bulbs to a pot or pan will form a graceful house adornment.

Single Sweet-scented (Narcissus Jonquilla.) Rich, buttery yellow; not as large a flower as the others, but most fragrant and very free flowering. 50c per doz.; \$4.50 per 100; \$30.00 per 1000.

Camparnelle. (Narcissus Odonus.) A grand variety, producing freely large yellow flowers, very sweetly scented; a strong grower; doing well in almost any position. 75c per doz.; \$5.00 per 100; \$50.00 per 1000.

Giant Camparnelle Rugulosus. The largest and finest of all Jonquils; a handsome flower; color pure yellow; very fragrant. 75c per doz.; \$5.00 per 100; \$50.00 per 1000.

Giant Rugulosus, Double Sweet Scented. Full double golden yellow; highly fragrant. 75c per doz.; \$5.00 per 100; \$45.00 per 1000.

POET'S AND POETAZ NARCISSUS

Poetaz Narcissus, a perfectly hardy strain of bunch-flowered Narcissus, was obtained by crossing Poeticus and Polyanthus varieties.

This is the old-fashioned type with white flowers, the cups margined with red and with rich, spicy odor. For indoor culture the King Edward VII and Ornatus are best. The Poetaz varieties are also of exceptional value for forcing.

Poeticus (Pheasant's Eye). Pure white perianth, cup edged saffron. 60c per doz.; \$4.00 per 100; \$35.00 per 1000.

Poeticus Ornatus. A much improved form of the ordinary Poeticus, producing large flowers and appearing two weeks earlier; for this reason they are especially adapted for forcing and making a splendid cut flower. Large bulbs, 50c per doz.; \$3.50 per 100; \$30.00 per 1000. Mammoth bulbs, 75c per doz.; \$4.50 per 100; \$40.00 per 1000.

Poetaz Aspasia. Perianth pure white, yellow eye, four or five large flowers, 15c each; \$1.25 per doz.; \$7.50 per 100.



Jonquils

SMALL WHITE PEBBLES

These are placed in vases or bowls in which Chinese Sacred Narcissi, Paper-White Grandiflora Narcissi or Double Roman Hyacinths are grown in water. Not available. Qt., 15c; 2 qts., 25c.



Narcissus, Poeticus Ornatus

CHINESE SACRED LILY

The "Shui Sin Far", or Water Fairy Flower, Joss Flower or Flower of the Gods, etc., as it is called by the celestials, is a variety of Narcissus, bearing in profusion chaste flowers of silvery white, with golden yellow cups. They are of exquisite beauty and entrancing perfume.

The bulbs, of large size and great vitality, are of luxuriant growth, producing several spikes of flowers; the incredibly short time required to bring bulbs into bloom (four to six weeks after planting) is one of the wonders of Nature. You can almost see them grow, succeeding almost everywhere and with everybody. They do well in pots of earth, but are more novel and beautiful grown in shallow bowls of water, with enough fancy pebbles to prevent them from toppling over when in bloom. A dozen bulbs, started at intervals will give a succession of flowers throughout the winter. We have found that first-size bulbs as generally sent out by other houses, do not flower satisfactorily, and we therefore offer only the Mammoth sizes. Mammoth bulbs, 25c each; \$2.50 per doz.; Original baskets containing 39 bulbs, \$5.00.

CALLA LILIES

One of the most satisfactory and easy growing bulbs for pot culture and forcing. They require rich soil and abundant moisture during their flowering season. After their flowering season is past, allow them to dry off and remain dormant part of the year.

Ethiopica. (Lily of the Nile.) The old favorite. Mammoth bulbs, 45c each; \$4.00 per doz.; \$28.00 per 100.

Godfrey. White. 40c each; \$4.00 per doz.; \$30.00 per 100.

Selected Crocus Bulbs

Crocus, among the earliest bulbs to flower, are most effective when planted in masses on the lawn, or arranged in three or four rows of one color in the border. They are perfectly hardy, and may be left in the ground for three or four years after planting without being disturbed. The best method is to scatter the bulbs about the lawn and use an ordinary garden dibble or transplanting trowel, inserting several bulbs in each place. This makes a very pretty effect in the spring, and the foliage and the tops may safely cut along with the grass when the first mowing is made.

The **Giant-Flowering Varieties** are very ornamental when flowered in pots of eight or ten bulbs to a 5-inch size.



King of the Whites Crocus

We also offer other **STANDARD VARIETIES** of Crocus as follows:

	Doz	100
King of the Whites	\$0.35	\$2.00
Mont Blanc. Pure white.....	.35	3.00
Baron von Brunow. Purplish blue.....	.35	2.00
Pres. Lincoln. Deep purple.....	.35	2.00
Cloth of silver. White, silver striped.....	.35	2.00
Sir Walter Scott. White, striped purple.....	.35	2.00
Mammoth Golden Yellow40	2.50
Cloth of Gold. Golden, striped brown.....	.35	2.00
Mammoth Finest Mixed. Extra large.....	.30	1.75

NEW NOVELTIES IN CROCUS

The following new varieties won the Prize of Honor at the Haarlem Exhibition.

Caesar. Fine large purple.

Edina. Extra large flower having mauve stripes on a white ground; margined white; base and stem are purple.

Kathleen Parlow. Purest white with large orange anthers.

Mikado. Pale greyish lilac, inside deep mauve stripes.

Pallas. White with fine light stripes; orange anthers. Extra large flower.

Scipio. White outside with purple base and pale mauve stripes inside. Orange anthers.

All novelties listed above, 60c per doz.; \$3.50 per 100; \$28.00 per 1000.



Lily of the Valley

Crocuses scattered about the lawn are very attractive.

LILY OF THE VALLEY COLD STORAGE FOR FORCING

For forcing, plant twelve pips in a 6-inch pot, keeping the crowns above the soil; place in a temperature of about 80 degrees, covering the pots with moss; keep them moist continually. They should flower three or four weeks from the time of planting. For the garden, plant the single pips 4 inches apart; they will increase rapidly and form one mass, blooming every spring.

By Parcel Post, add postage at Zone rates. Weight per bundle, 2 lbs.

Best Quality Selected Pips. From cold storage for forcing immediately. \$1.00 per doz.

Per bundle, 25 pips, \$1.75; 100, \$6.00.

LILY OF THE VALLEY CLUMPS

(For Outdoor Culture)

By Parcel Post add postage at Zone rates. Weight, 2 lbs. per clump.

We strongly recommend them for outdoor planting only. Each clump has from 10 to 25 pips or crowns, and they are grown from the large flowering varieties.

Large Clumps. Containing many flowering pips, 30c each; \$3.50 per doz.; \$25.00 per 100.



Giant Freesias

Without doubt the most sweetly scented flower grown: a single bloom permeates the living-room with its delicate perfume. Although they are quite popular and very easily raised, we would suggest the following treatment:

Procure the bulbs as early as possible, and plant them in successive batches from August to October, using from six to twenty-five bulbs for a single pan. The soil should be a mixture of loam, to which must be added leaf-mold and sand. The bulbs planted early, say August and September,

may be placed outdoor in a sheltered spot until cold weather sets in: of course they must be regularly watered and kept growing all the time. In October, before frosts appear, the pots should be placed in frames, if possible, or near the window of an unheated room. Not before November must the young plants be brought to gentle heat, and if thus cared for they will flower perfectly in January. The foliage of the Freesias is very fine and slender and must be supported with light stakes placed around the outer edge of the pans. The glistening, pure white flowers are borne on long stems, and are very valuable for cutting.

JOHNSON'S IMPROVED PURITY

Through painstaking effort our grower of *Freesia Purity* has maintained such a quality in our strain of this very desirable cut-flower by careful selection as to justify us in offering it as an improved strain, as compared to many of the strains indiscriminately grown, and offered today.

	Doz.	100	1000.
Monster bulbs.....	\$0.85	\$6.00	\$55.00
Jumbo bulbs.....	.75	5.50	50.00
Mammoth bulbs.....	.60	4.50	40.00

New Colored Freesias

The following seven most beautiful new colored Freesias are the result of many years of painstaking effort on the part of that well known specialist, Alois Frey, who introduced a few years ago, the grand variety *General Pershing*, which today commands the largest sale of any Colored Freesia ever placed on the market. These choice Freesia Novelties created a sensation the past season.

California. A large flower of bright, golden yellow, extra fine, strong growth and long stems: one of the very finest yellow freesias. \$1.25 per doz.; \$9.00 per 100.

Carmencita. Medium sized flower of a beautiful light orange-salmon hue with buff shading on the lower petals; long, wiry stems. \$1.25 per doz.; \$9.00 per 100.

Ilena. Deep rosy lavender with white throat, deep orange blotch on lower petal and good, stiff stems; flowers very large and very attractive. \$1.25 per doz.; \$9.00 per 100.

June Michelsen. Large-flowering, deep rose pink with light blush throat; three lower petals are veined purplish crimson with a deep yellow

blotch on center petal; good, stiff stem and strong constitution; a variety of special merit. \$1.25 per doz.; \$9.00 per 100.

Olivette. Bright carmine red with light yellow throat, lower petals having a deep yellow blotch with crimson veins: very profuse bloomer. \$1.50 per doz.; \$10.00 per 100.

General Pershing. One of the finest of the new colored Freesias. A clear carmine-pink with white throat. A fine, tall grower, very decorative. 75c per doz.; \$5.50 per 100; \$45.00 per 1000.

Fischer's Splendens. Flowers same size as Purity. Color deep lavender. \$1.00 per doz.; \$6.50 per 100; \$65.00 per 1000.

JOHNSON'S RAINBOW MIXTURE

These beautiful novelties are rapidly winning favor on account of their lovely and unique colorings, their delicate fragrance and free-blooming qualities. Their culture is the same as other Freesias. Mixed colors only, 85c per doz.; \$5.50 per 100.

MUSHROOM SPAWN

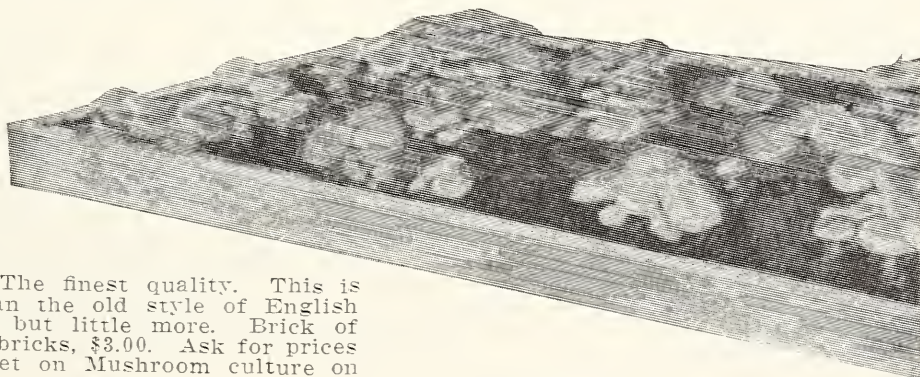
Have Fresh Mushrooms on Your Table Every Day.

The ease and certainty with which a crop of Mushrooms can be grown to perfection in an ordinary house cellar, woodshed or barn, and the astonishing success of so many who have taken up this new industry, both for profit and their own use, induces us to call especial attention to the subject. The great luxury of Mushrooms can be enjoyed by all at a trifling expenditure of money, time and labor. We recommend our Pure Culture Mushroom Spawn as generally better both for market garden and the private planter. Directions for culture sent on application. Ten bricks will plant 100 square feet.

Pure Culture. (In bricks.) The finest quality. This is vastly more dependable than the old style of English Milltrack Spawn and costs but little more. Brick of about 1½ lbs., 35c each; 10 bricks, \$3.00. Ask for prices for larger lots. Free leaflet on Mushroom culture on request.

BOOK ON MUSHROOMS

This contains very complete yet easily understood directions for growing Mushrooms from Pure Culture Spawn. It is a practical book for the amateur as well as the experienced grower. Illustrated. Cloth. Price, \$1.00.



Hardy Lilies

We especially recommend deep planting, say, from 6 to 8 inches deep; varieties like Speciosums require at least 8 inches, with an ample amount of sand beneath the bulb to insure proper drainage. Cover the beds with leaves or litter during winter. Lilies thrive well in borders, formal gardens, or shrubbery, and usually flower at a time when the shrubbery has ceased blooming, adding increased interest. The following varieties have proved to be sorts that may be planted in the fall or spring with excellent results. They arrive from France in September, and must be planted by November 1.

Most Lily Bulbs, being of late maturity, do not arrive in our country until October and November which is conceded to be the best time to plant. Where the ground is liable to freeze before late Lilies arrive, it should be mulched with leaves or manure.

Lilies and other bulbs marked with a star (*) will not be ready until the middle or latter part of October or November.

If Lily bulbs are to be sent by parcel post, add postage at your zone rate. Bulbs 11x13 and 12x14 inches, weigh 8 ounces; 9x10 and 9x11 inches, 6 ounces; 7x9 inches, 4 ounces; all other varieties, 2 ounces.

Prices Subject to Change

LILIUM CANDIDUM

(MADONNA LILY)

Choice Northern-Grown. Arrive in Aug. or Sept.

The favorite Lily of the old-fashioned garden, produces strong, stiff stems, studded with a mass of pure, glistening white flowers, that enliven the perennial flower-garden or for contrast with the beautiful green shrubs of the June garden, are unequalled, frequently growing 4½ feet high.

Plant some bulbs during September and October and enjoy a big crop of flowers next June; or pot up, store in coldframe, and force for early winter in the greenhouse or conservatory. Our bulbs of this splendid Lily are grown in northern France, and are of the true thick-petaled variety, which is much superior in habit and flowering qualities to that of the cheap, loose, southern grown bulbs. Jumbo bulbs, 60c each; \$6.00 per doz.; \$40.00 per 100. Mammoth bulbs, 40c each; \$4.00 per doz.; \$30.00 per 100. First size bulbs, 25c each; \$2.50 per doz.; \$20.00 per 100.

***AURATUM**. (Golden-Banded Lily.) One of the finest in existence. Ivory white, with central band of yellow and numerous purple spots; produces from 4 to 12 flowers or more on a stem 3 to 4 feet high.

	Each	Doz.	100
Extra large bulbs, 9 to 11 in...	\$0.55	\$5.50	\$40.00
Mammoth bulbs, 11 to 13 in...	.70	7.00	50.00
Monster bulbs, 13 to 15 in...	1.25	12.00	90.00

CANADENSE (Native Canadian Lily.) Flowers bright yellow with small black spots, excellent for naturalizing in hardy borders or woods. Height, 2 feet. 25c each; \$2.25 per doz.; \$16.00 per 100.

***SPECIOSUM album**. Pure white, with green band in the center of each petal; very fragrant.

	Each	Doz.	100
Extra large bulbs, 8 to 9 in...	\$0.45	\$4.50	\$40.00
Mammoth bulbs, 9 to 10 in...	.55	5.50	45.00
Monster bulbs, 10 to 12 in...	.65	6.50	50.00

***SPECIOSUM Melpomene**. Large, rich blood crimson flowers heavily spotted.

	Each	Doz.	100
Extra large bulbs, 9 to 11 in...	\$0.45	\$4.50	\$35.00
Mammoth bulbs, 11 to 13 in...	.60	6.00	45.00
Monster bulbs, 13 to 15 in...	1.00	11.00	80.00

***SPECIOSUM rubrum, or roseum**. White, shaded with deep rose and spotted red.

	Each	Doz.	100
Extra large bulbs, 9 to 11 in...	\$0.45	\$4.50	\$35.00
Mammoth bulbs, 11 to 13 in...	.60	6.00	45.00
Monster bulbs, 13 to 15 in...	1.00	11.00	80.00

***SPECIOSUM magnificum** (Oriental Orchids.) Flowers larger than any of the other Speciosums. White, heavily spotted with rich crimson.

	Each	Doz.	100
Extra large bulbs, 9 to 11 in...	\$0.45	\$4.50	\$35.00
Mammoth bulbs, 11 to 13 in...	.60	6.00	45.00
Monster bulbs, 13 to 15 in...	1.00	11.00	80.00

REGALE (Myriophyllum.) The most wonderful lily of recent introduction. Perfectly hardy and a splendid grower. \$1.00 each; \$10.00 per doz.; \$80.00 per 100.



Lilium Candidum

JAPANESE LILIES

(Easter Lilies)

For Greenhouse Forcing and Indoor Growing

We offer two varieties of Japanese Lilies which are largely grown for January to Easter flowering; *L. longiflorum formosum*, which usually arrives in this country late in August, and *L. longiflorum giganteum*, which usually arrives in October or November.

LONGIFLORUM FORMOSUM. Black stems; blooms early; Often used instead of the Bermuda as an Easter Lily. Ready in September.

	Each	Doz.	100
7- x 9-in circumference.....	\$0.50	\$5.00	\$45.00
9- x 10-in. circumference.....	.60	6.00	55.00
10- x 12-in. circumference.....	.75	7.50	65.00

LONGIFLORUM GIGANTEUM. Pure white flower. Stems black; later than the preceding; flowers of more substance. Ready in October.

	Each	Doz.	100
7- x 9-in. circumference.....	\$0.75	\$6.50	\$45.00
9- x 10-in. circumference.....	.90	8.50	65.00

HARRISII (Bermuda Easter Lily.) Ready in August or September. Large, pure white, trumpet-shaped flowers.

	Each	Doz.	100
7- x 9-in. circumference.....	\$0.60	\$5.50	\$40.00
9- x 11-in. circumference.....	1.25	11.00	80.00

HARDY TIGER LILIES

Tigrinum flore pleno. (Double Tiger Lily.) Double orange flowers, spotted black. First size bulbs, 35c each; \$3.50 per doz.

***Tigrinum splendens**. (Improved Tiger Lily.) Rich scarlet, with dark spots. First size bulbs, 30c each; \$3.00 per doz.

Miscellaneous Bulbs and Roots

AMARYLLIS

Culture. Place the bulbs in live moss, only moderately moist, near a window of a warm room. Watch the bulbs carefully, and when the first sign of growth appears through the top, get a 6-inch pot and be ready to pot. The soil should be a fairly rich one, and when set, most of the bulb should be above the soil. Be moderate in watering first, but increase as growth increases, then place in a warm, light room near the window, and the spikes usually appear in a short time.

Formosissima. (Jacobean Lily.) Brilliant carmine flowers. 25c each; \$2.50 per doz.

Johnsonii. Very large flowers of a rich crimson scarlet color, striped with white. 35c each; \$3.50 per doz.

ANEMONE

(Windflower)

These popular flowers of French origin are exceedingly useful, both as a decorative plant for house or garden, and fine for cutting. If planted outdoors in the fall they must be well protected with leaves or other litter; they may also be planted in the spring in well-drained soil, and will flower during the summer, starting in May. When planted in pots, place twelve or more in a cluster and store away, if possible, in a coldframe. There they should be left until the middle of March; if carefully watered, when brought into the house they will flower abundantly. Height, 8 inches.

Fulgens. Rich, dazzling scarlet; fine for cutting; 10c each; \$1.00 per doz.; \$6.00 per 100.

St. Brigid. A new and greatly improved race of Irish production, bearing magnificent flowers, double, semi-double and single, 3 to 5 inches across and of the richest as well as the daintiest colors, markings and blendings, all having a distinct dark base. They have long stems, very graceful for vases. \$1.00 per doz.; \$6.50 per 100.

BLEEDING HEART

Dicentra spectabilis. (Dielytra) (Bleeding Heart or Lyre Flower.) Ready in November. A beautiful plant for the border and elegant as a pot plant for the house. An old favorite, ever delightful, with sprays of beautiful pink and white flowers, heart-shaped. Large clumps, 60c each; \$5.50 per doz.



ANEMONE (Windflower)



Amaryllis

CHIONODOXA

(Glory of the Snow)

An early-flowering spring bulb for borders or rockery. Produces flower-spikes bearing ten to fifteen Scilla-like flowers. Perfectly hardy and should be placed close together for effect.

Luciliae. Bright sky-blue with white center. 60c per doz.; \$4.00 per 100.

Sardensis. Deep blue. 60c per doz.; \$4.00 per 100

IXIAS

Charming, Winter-blooming bulbs of easy culture, with long, slender, graceful spikes of bloom. The colors are varied and beautiful, the center of the flower is always distinct in color from the outer parts, the effect of which is very striking. Six to eight bulbs can be planted in a 6-inch pot.

	Doz.	100
Azurea. Azure blue.....	\$1.00	\$7.50
Bridesmaid. White, carmine eye.....	.90	6.50
Crateroides Major. True bright scarlet	1.00	7.50
Mozart. Dark yellow, black eye.....	.85	6.00
Viridiflora. Green, black center.....	1.10	8.50
Fancy Mixed.50	3.50

FRITILLARIA

Singular, dwarf, spring-flowering plants, bearing large pendent bell-shaped flowers of various colors, in yellow, white, black, purple, striped and splashed and checkered in the most curious way. They are invaluable for pot culture and exceedingly pretty when grown in large groups in the garden border or wild garden in a dry situation.

Mixed Varieties. 65c per doz.; \$5.00 per 100.

GRAPE HYACINTHS

(Muscara)

Hardy as an Oak. Splendid for Naturalizing.

Beautiful little flowers for planting in masses either in shade or sun. Also adapted for growing indoors. Plant six bulbs in a five-inch pot and treat same as Dutch Hyacinths.

Imported Heavenly Blue. 60c per doz.; \$4.00 per 100; \$35.00 per 1000.

GLADIOLUS COLVILLEI

Delivery in October and November

The Colvillei section should not be confused with the Gandavensis or large-flowering Gladioli. The Colvillei has much more slender spikes and daintier flowers, which are pretty for cutting; arranged in vases with ferns and other foliage. Often planted in carnation beds.

Blushing Bride. A very delicate pink with bright carmine blotch in the throat. \$1.25 per doz.; \$8.50 per 100.

Peach Blossom. A very lovely shade of soft pink on the order of the Killarney rose. \$1.25 per doz.; \$8.50 per 100.

The Bride. Pure white. \$1.25 per doz.; \$8.50 per 100

MISCELLANEOUS BULBS AND ROOTS—CONTINUED

OXALIS

Valuable for winter flowering; elegant for pots and baskets.

Bermuda Buttercup. Very good for winter flowering being free and continuous; pure bright yellow flower. 50c per doz.; \$3.50 per 100.

Bowel. Brilliant carmine-rose. 55c per doz. \$3.50 per 100.

Grand Duchess. Lavender, White or Pink. Flowers are large, often measuring 3 inches in diameter. 55c per doz.; \$3.50 per 100.

RANUNCULUS—BUTTERCUP

Plant in November for early bloom in frames. Set tubers 3 to 4 inches apart, pressing them firmly into the soil, claws downward, and cover them with sand, then with soil.; keep the crown of the tuber two inches under the surface. During dry weather the plants should be given abundance of water.

Johnson's Finest Mixed. 75c per doz.; \$5.00 per 100.

SPIREAS

Strong Forcing Cumps. Each \$1.00; doz., \$10.00.

Princess Mary. (New.) Lavender-pink.

America. Rosy-lilac.

Peach Blossom. Pure white.

Gladstone. Pure white.

Queen Alexandra. Beautiful pink.

Rubens. Deep crimson-rose.

SCILLAS

SQUILL

Very hardy and beautiful class of bulbous plants. Desirable for house and garden culture. Charming in all respects. Splendid for naturalizing. Will grow and flower in shady places where most flowers will not exist.

Scilla Sibirica. Intense bright blue. 75c per doz.; \$5.00 per 100.

Sibirica Alba. Pure white. 75c per doz.; \$5.00 per 100.

SNOW DROPS

GALANTHUS

The charming Snowdrop is the first of all flowers to herald the approach of spring. It can frequently be seen in bloom when the ground is white with snow as it takes every advantage, and hastens to display its graceful snow-like bells before the winter has disappeared. In conjunction with Chionodoxes and Scillia Sibirica, a matchless effect can be produced. It is possible to grow these in pots in the house. A dozen bulbs will fill a 5-inch pot. They will stand forcing, doing best in a low temperature.

Peonies Ready in October

Those of our customers who are fond of the old-fashioned "Pineys" of grandmother's garden will be even more delighted with the modern marvels which the skill of the hybridizer has given us. These are not any more difficult to grow than potatoes. Plant in good deep, rich soil so that the crown of the plant is about two inches below the surface.

Mailing weight, 16 ozs. each root.

Albatre. Large, compact, globular rose type. Petals edged milk-white with fine line of lilac. Strong grower and free bloomer. \$1.00 each; \$10.00 per doz.

Dorchester. Large, compact rose type; pale pink; fragrant. Free bloomer. Dwarf. \$1.00 each; \$8.00 per doz.

Duchesse de Nemours. Medium size. Sulphur white. Free bloomer and strong grower. \$1.00 each; \$8.00 per doz.

SNOW DROP PRICES

Single. Pure white, graceful bells; early flowering. Doz., 60c; 100, \$4.00.

Double. Flowers perfectly double; pure white. Doz., 75c; 100, \$5.50.

TRITELEIA

(Spring Star Flower)

Uniflora Violaacea. A perfect little gem for pot culture. It flowers in the early spring months. The bulbs are small and several should be grown in a pot. It grows about 6 to 8 inches high, each bulb producing several pretty star-shaped flowers of a delicate violet-blue which emit the perfume of primrose. They are perfectly hardy, and when grown in quantities in a sunny border or used for edging, they are very effective. Each, 15c; 2 for 25c; doz, 65c; 100, \$5.00.



Double Peonies

TRILLIUM

(Wood Lily, or Wake Robin.)

Grandiflorum. Excellent plants for shady positions in the hardy border, or in a sub-aquatic position. Large white flowers in early spring. Each, 35c; doz.; \$3.00; 100, \$20.00.

Felix Crousse. Large; globular; brilliant red. Free bloomer. One of the best Peonies. 95c each; \$7.50 per doz.

Festiva Maxima. Very large; white. Vigorous grower. One of the best whites. 85c each; \$7.00 per doz.

Mlle. Leonie Calot. Delicate rose with lilac-pink center. Good grower. Medium tall. \$1.00 each; \$8.00 per doz.

Richardson's Rubra Superba. Deep carmine or crimson. Fragrant. Good grower. Very late. \$1.00 each; \$8.50 per doz.

DOUBLE PEONIES IN MIXTURE

We can supply good strong roots in Double White, Double Pink, Double Crimson or Double All colors Mixed, at 75c each; \$6.50 per doz.; \$50.00 per 100.

Beautiful Irises, In Roots

Few flowers are equal in merit to the Iris, in its many forms and gorgeous colorings. The Iris offered on this page are roots and are grown just like the daffodil or tulip. The Dutch Iris in this latitude flowers during May, the Spanish in early June. Iris filifolia imperator and Iris tingitana are usually grown indoors in pots. Bulbs do best if planted in October, and also seem to do better if protected with a slight covering during winter.

JAPANESE IRIS

Iris Kaempferi

The Japanese Iris usually flower after the German. They are much admired on account of their variety of color and large size. We offer eight of the finest distinct varieties that we know of. They have been selected by us from a large collection of the best named sorts. Six-petal varieties are termed double; three-petal varieties, single.

Amethyst. (Single.) Immense, wide-spreading flowers of fine substance. Color, light lavender or amethyst. 50c each; \$3.50 per doz.

Azure. (Double.) Immense flower; exquisite wavy; mauve blue with darker halo surrounding the yellow blotch at the base of the petals. 60c each; \$6.00 per doz.

Gold Bound. (Double.) Tall and showy with flowers of enormous size, probably the most beautiful of all. Pure white with large gold-banded center. 35c each; \$3.50 per doz.

Mahogany. (Double.) Dark red, shaded maroon. 50c each; \$4.50 per doz.

Nightfall. (Single.) Very dark purple-blue, with iridescent luster. Richest color of any Iris. 75c each; \$7.50 per doz.

Norma. (Double.) An exquisite silky lavender-pink, with clear blue disk and yellow spot at the base of petals. Very fine and a long step towards a pink. 60c each; \$6.00 per doz.

Red Riding Hood. (Single.) Fine amaranth, veined white. 35c each; \$3.50 per doz.

Templeton. (Double.) Light violet shade, mottled reddish pink and white. Often triple; exceedingly fine in form. 50c each; \$4.50 per doz.



Japanese Iris

Franz Hals. Pale blue, with creamy yellow falls and large orange spot.

Hart Nibbrig. Brilliant clear blue. Considered one of the finest of this beautiful family.

Hart. Standards purple-blue, flaked lilac; falls grayish lilac.

Van Der Venne. Lilac and creamy white. Selected roots, any of the above varieties, \$1.00 per doz.; \$7.00 per 100.

IRIS TINGITANA

(Come in bulbs only.)

A cross between the Spanish and Dutch Iris and, without a doubt, the finest early-flowering bulbous sort. Commercial florist force them in bloom early in January when they make a beautiful cut-flower. The color is a rich, deep blue. \$1.25 per doz.; \$10.00 per 100.

The two varieties of Iris most suitable for outdoor planting for cut-flowers are the Spanish and Dutch. It is advisable to plant both, as the Dutch come into flower most seasons ten days earlier.

SIBERIAN IRIS

Sibirica Orientalis. Rich, violet-blue; very free and one of the best. June, 3½ feet. 25c each; 2.50 per doz.; \$15.00 per 100.

Snow Queen. A new variety of great merit; forms an attractive plant; flowers snow white. 25c each; \$2.50 per doz.; \$15.00 per 100.

OUR 1925 CATALOGUE OF SEEDS, BULBS AND PLANTS

Our spring catalogue, a large illustrated book containing many plates, devoted to flower and vegetable seeds, bulbs, hardy perennials, etc., will be issued in January. Customers will receive this without applying. We will be glad if you will tell your friends about our catalogue, and we will send it to anyone free of charge upon application.



Siberian Iris

GERMAN IRIS(Roots)
Fleur-de-Lis, or Blue Flags

During May, the Irises rule supreme in the hardy border where they thrive in soil too poor to grow potatoes. The Irises are the "Flags" of the old-fashioned gardens. They are most effective when used as edging for shrubbery or garden border.

Named varieties, 50c each; \$5.00 per doz.; \$35.00 per 100.

Midnight. A rich deep purple; the finest in this color. A fine cut-flower.

King of Iris. A striking novelty, with flowers perfect form, the standards clear lemon color; falls deep satiny brown, with a broad border of golden yellow.

Loreley. Flowers perfect shape. Falls of a deep ultra-marine blue, more or less veined creamy white, with a border of sulphur-yellow. The standards are pale sulphur-yellow.

Madame Chereau. White, elegantly frilled with a wide border of clear blue. One of the most charming sorts.

Shakespeare. Standard bronzy yellow; falls maroon, reticulated yellow.

Walhalla. Standards lavender; Falls wine-red; very showy and attractive color combination.

Ingeborg. Pure white. Very large flower.

SPANISH IRIS

Iris Hispanica bulbs.

These exquisite and dainty flowers may be justly termed the "poor man's orchid," as the colorings and markings are scarcely surpassed by that noble genus. The flowers are exceedingly graceful, of large size, frequently 4 to 5 inches across, and are borne on stems 24 inches tall.

They may be planted in pots and stored in cold-frames over winter, and forced into bloom during March. They are seen to the best advantage if arranged in masses of the different colors, all of which combine splendidly, in borders or beds. Plant bulbs 3 to 4 inches deep, and the same distance apart. Sharp builders' sand, to the depth of one inch beneath base of the bulbs will amply repay by more luxuriant spikes and larger flowers. A situation well open to the sun suits them best, and, like all bulbous Irises offered, a slight mulch will prove beneficial.

Belle Chinoise. Bright sunny yellow.

Cajanus. Rich golden yellow.

Heavenly Blue. Deep sky-blue.

Hercules. Beautiful bronze.

King of the Blues. Deep dark blue.

King of the Whites. Large; pure white.

Selected bulbs, any of the above varieties, \$1.00 per doz.; \$7.50 per 100; \$70.00 per 1000.

HARDY PERENNIAL PLANTS

Aquilegia

The size mentioned in the descriptions indicates the approximate height that the plant may be expected to attain at maturity. The months represent the season of bloom.

Prices of Perennials, except where otherwise noted. 15c each; \$1.50 per doz.; \$10.50 per 100.

ACHILLEA Ptarmica, "The Pearl." Small double white flowers in open heads, blooming profusely all summer. 2 feet.

ACONITUM Napellus. (Monkshood.) Dark blue flowers hooded in dense heads from July to Sept. 3 ft.

Napellus album. Pure white hooded-flowers.

Napellus bi-color. Flowers blue and white.

AGERATUM, Hardy, Princess Pauline. Bright blue.

ANCHUSA. (Dropmore.) Beautiful rich blue. 5 to 6 feet. \$2.50 per dozen.

ANEMONE japonica.

Alba. Flowers pure white, with prominent yellow center. Flowers produced on long stems. 20c each; \$2.00 per doz.; \$15.00 per 100.

AQUILEGIA chrysantha. (Golden Spurred Columbine.) Flowers are a pure golden yellow with long spurs. Very fragrant and one of the best of the Columbines. June to September. 3 feet.

Chrysantha alba. A white-flowering form of above.

Long-spurred Varieties. A selected strain of immense flowers in all the brilliant shades. 20c each; \$2.00 per dozen.

ARABIS Alpina. (Rock Cress.) An excellent dwarf plant for rockwork, borders or carpeting where massed color effect is desired, covered during its blooming season with snow-white flowers.

HARDY ASTERS. (Michaelmas Daisies.) These are very handsome and useful. They flower at a time when few hardy plants are in bloom. 10c each; \$1.00 per doz.; \$8.00 per 100.

BOLTONIA latisquama. Very showy pink flowers, fine for cutting. August and Sept. 4 to 5 ft.

CAMPANULA (Bluebells)

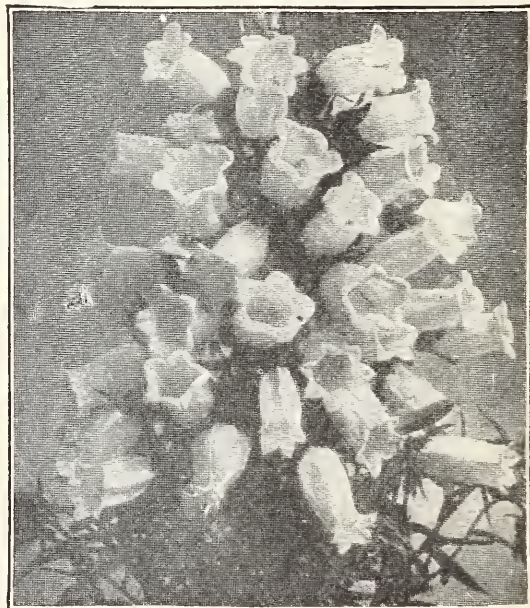
Giant Cup and Saucer Canterbury Bells. (Campanula media calycanthema.) The large cup- and saucer-shaped flowers are extremely handsome. Separate colors, blue, pink, white and mixed. \$2.50 per doz.; \$18.00 per 100.

Canterbury Bells. Campanula media.) Our strains of Canterbury Bells is unexcelled. We grow them in separate colors, blue, pink, white and mixed. \$2.50 per doz.; \$18.00 per 100.

CHRYSANTHEMUMS. (Hardy Pompons.) All colors, 10c each; \$1.00 per doz.; \$7.00 per 100.

Large Flowered or Shaggy Varieties. All standard varieties and colors. 10c each; \$1.00 per doz.; \$7.00 per 100.

Small Flowered or Button Varieties. 10c each; \$1.00 per doz.; \$7.00 per 100.



Campanula

JOHNSON'S HARDY PLANTS—CONTINUED

Prices of Perennials, except where otherwise noted, 15c each; \$1.50 per doz.; \$10.50 per 100.

- CLEMATIS, Large-flowering.** Ready Oct. 25th.
Anderson Henryi. Creamy-white, large.
Jackmanii. The popular rich purple variety
 Potted plants, either of the above, \$1.25 each.
Faniculata. (Japanese Virgin's Bower.) One of the finest climbers: clouds of small white fragrant flowers in August. 75c each; \$6.50 per doz.
COREOPSIS Lanceolata Grandiflora. This is one of the finest of hardy plants, with large, showy bright yellow flowers, produced in the greatest abundance from June till frost. As a cut-flower they stand near the head among hardy plants. 10c each; \$1.00 per doz.; \$8.00 per 100.
DELPHINIUMS. (Hardy Larkspur.) These are deservedly one of the most popular subjects in the hardy border; of easiest culture; perfectly hardy. They will establish themselves in almost any garden soil, but respond quickly to liberal soil.
Belladonna. The freest and most continuous blooming of all. The clear turquoise blue of its flowers is unequalled for delicacy and beauty. 20c each; \$2.00 per doz.; \$15.00 per 100.
Formosum. Best dark blue. 20c each; \$2.00 per doz.; \$15.00 per 100.
DIANTHUS Deltoides. (Maiden Pink.) A charming creeping variety, with pink flowers.
alba. A pretty white flowering form. 10c each; \$1.00 per doz.; \$8.00 per 100.
DIGITALIS. (Foxglove.) Old-fashioned hardy biennial plants with broad foliage and showy flowers borne on spikes. June and July.
FUNKIA (Hosta) undulata variegata. Green leaves margined and edged white. Fine for borders and edging. 30c each; \$2.50 per doz.; \$19.00 per 100.
subcordata grandiflora. Large white flowers, borne in heads. Foliage green, pointed; sweet scented. 18 in. August and September. 30c each; \$2.50 per doz.; \$19.00 per 100.
GAILLARDIA grandiflora. One of the showiest of perennials. Ray flowers ranging from red to yellow, dark maroon center. 3 ft. June to frost. 10c each; \$1.00 per doz.; \$8.00 per 100.
GYPSOPHILA paniculata. (Baby's Breath.) Minute white flowers borne in enormous quantity in open panicles during Summer months. Valuable for cutting.
HELENIUM autumnale superbum. Large, yellow flowers, with drooping rays borne in immense panicles. 6 to 7 ft. July to September.
autumnale rubrum. A variety of the above with bright terra cotta red flowers.
HEMEROCALLIS, flava. (Lemon Day Lily.) Frar-srant yellow flowers in June. Grows 2 ft. high, with flowers on long stems for cutting.
fulva. (Orange Day Lily.) This old-fashioned flower is one of the hardiest. It will do well in full sun or in the shade of deciduous trees, and is not particular as to soil if not too wet.
HIBISCUS, Crimson Eye. Large, white flowers with a crimson-purple eye. Aug. to Sept. 6-7 ft.
militaris. Large, light pink flowers. crimson center. July to September. 5 to 6 feet.
 Either of above, 50c each; \$5.50 per doz.: Extra large plants.
HOLLYHOCKS (Althea Rosea.) One of the noblest of hardy plants. It is well fitted to break

up ugly lines of shrubs or walls by its tall, stately growth. Deep cultivation, much manure and frequent watering in dry weather will secure fine spikes.

Double. Flowers form rosettes of lovely shades of yellow, crimson, rose, pink, orange and white.

HONEYSUCKLE, Chinese Evergreen. (Woodbine.) Red, yellow and white. 30c each; \$3.00 per doz.

Monarda didyma (Bee Balm.) Bright scarlet flowers in terminal heads. July to September. 2 to 3 feet. 10c each; \$1.00 per doz.; \$8.00 per 100.



Delphinium

- MYOSOTIS.** (Alpine Forget-Me-Not.)
Alpestris. Splendid for naturalizing on edge of ponds and streams; also for beds, borders, and rockeries.
OENOTHERA. (Evening Primrose.)
Pilgrimi. Large clusters of bright yellow. 18 inches. June to September.
speciosa. A rare, pure white variety. 18 inches. June to September.
PENTSTEMON. (Beard Tongue.) Most desirable perennials for either border or rockery. They like a friable loam, with a mixture of well-decayed leaf mold and sharp sand.
Barbatus Torreyi. Spikes of brilliant scarlet; very effective; Height 2 to 5 feet; June to Aug.
PHLOX SUBULATA. (Moss or Mountain Pink.) An early spring-flowering type, with pretty moss-like evergreen foliage, which, during the flowering season, is hidden under the masses of bloom. An excellent plant for the rockery, and invaluable for carpeting the ground or covering graves.
Alba. Pure white.
Lilacina. Light lilac.
Rosea. Bright rose.
PHYSOSTEGIA (False Dragon Head.) One of the most beautiful of our mid-summer flowering perennials, forming dense bushes 3 to 4 feet high, bearing spikes of delicate tubular flowers.
Virginica. Bright, but soft pink.
Alba. Pure white; very fine.
 Either of above, 10c each; \$1.00 per doz.; \$8.00 per 100.
PLATYCODON. (Balloon Flower, or Japanese Bell-flower.) The Platycodons form neat branched bushes of upright habit, which bear a continual succession of flowers from June to October.

COLLECTIONS OF HARDY PERENNIALS

For customers who are not acquainted with the various varieties, we offer the following collections, in varieties strictly of our selection, in good, strong roots, that will, with little care, keep the garden gay with flowers from the time frost leaves the ground until late in autumn.

12 Varieties, our selection.....	\$1.50
25 Varieties, our selection.....	2.75
50 Varieties, our selection.....	5.00
100 Varieties, our selection.....	9.00

PERENNIAL PLANTS—CONTINUED

Grandiflorum. Deep blue-cupped, star-shaped flowers; 1½ feet.
Album. A white-flowered form of the above. Either of above, 10c each; \$1.00 per doz.; \$8.00 per 100.
PYRETHRUM roseum hybridum. Single flowering in shades of pink, lavender, red and yellow; mixed colors.
RUDBECKIA. (Golden Glow.) Flowers beautiful golden yellow and very double. June till Fall. 6 to 8 feet.
SEDUM spectabile. Handsome rose-colored flowers in immense heads, during late Fall. 18 inches. Tall blooming. 30c each; \$2.50 per doz.; \$18.00 per 100.
SHASTA DAISY. Large, showy white flowers 4 inches across; in bloom all summer and fall.
STOKESIA (laevis) Cyanea. (Cornflower Aster.) Large, deep blue flowers, from August to October.
Cyanea alba. Same as above only pure white.

SWEET WILLIAM (*Dianthus Barbatus.*)
Newport Pink. Rich salmony-rose.
Bright Scarlet. Effective color.
Pure White. Very large.
Mixed. Containing all colors.
TRITOMA Pfitzeri. (*Kniphofia Uvaria grandis.*) A superb variety, very free blooming. Color a rich brilliant orange; medium height. Summer till Fall. 35c each; \$3.50 per dozen.
VALERIANA officinalis. Old-fashioned garden Pliotrope, lavender flowers. June and July. 4 feet.
VERONICA. (Speedwell.) The Speedwells are mostly natives of New Zealand, flowers being of a blue shade, varying to rose and dull white. They succeed in any garden soil in sunny situations. The low-growing forms are good rock plants. 1 ft. July to August. 20c each; \$2.00 per doz.; \$15.00 per 100.
Prices of Perennials, except where otherwise noted, 15c each; \$1.50 per doz.; \$10.50 per 100.

Hardy Ornamental Shrubs FOR FALL PLANTING

ALTHEA, Hibiscus syriacus (Rose of Sharon)
Admirable Dewey. Double, pure white.
Duc de Brabant. Double red.
Faenaeflora. Double, clear pink.
Variiegata. Variegated leaved; a dwarf variety with leaves margined silvery-white. Branches are studded with large purplish-red buds, which, however, do not fully open. Height 5 feet.
Prices of above four varieties:

	Each	Doz.
2 feet -----	\$0.75	\$ 6.00
3 feet -----	1.00	10.00
4 feet -----	1.25	12.50

Villosa. (*S. villosa.*) Color light pink. Valuable for late blooming. 2 feet. Each 75c; doz., \$6.50.
JAPANESE QUINCE (Cydonia Japonica.)
 A shrub with spreading spiny branches. Glossy leaves; flowers are a deep scarlet, in clusters. The quince-shaped, golden-yellow fruit remains a long time in summer. 3 feet. Each \$1.25.

BUDDLEIA
Veitchiana variabilis. Flowers of a pleasing shade of violet-mauve, borne on long, cylindrical spikes and with liberal cultivation, will grow from 15 to 20 inches long. Flowers freely first season. 75c each; \$6.50 per doz.

SPIREA
Anthony Waterer. Flowers scarlet-crimson, blooming profusely from June to October. Strong plants. 2 feet. 1-ft, each, 75c.; doz, \$6.50. 1½-ft, each, \$1.00; doz, \$9.00.
Bridal Wreath (S. Prunifolia.) One of the best and earliest blooming shrubs. Flowers double, white and very abundant along the stem. May. 6 to 7 feet. 2-ft., each, 75c; doz. \$7.50.
St. Peter's Wreath (S. Van Houttei.) The finest and most satisfactory of all Spireas, either singly or among other shrubs. It forms a round and graceful bush, with arching branches, which in June are set from end to end with beautiful white blossoms. 2 ft., each 60c; doz., \$6.50. 3 ft., each, 75c; doz., \$7.50.

DEUTZIA
Scabra Watereri. Beautiful single pink. Flowers in June.
Gracilis. Slender, often arching branches. Low, dense, globular habit; flowers pure white in racemes.
Lemoine. A vigorous grower and excellent for forcing; very desirable; early bloomer; panicles of pure white flowers borne on stout branches. Blooms in May and June.
Prices of above varieties:

	Each	Doz.
2 to 3 feet -----	\$0.90	\$8.50

SYRINGA (Philadelphus.)
Golden. (*P. coronarius foliis aureis.*) A graceful variety, with bright yellow foliage. Height 5 feet. 1½ ft., each \$1.00; doz.; \$9.00.
Mock Orange. (*P. coronarius.*) Shrub with upright branches; pure white, fragrant flowers are produced in clusters in June; foliage dark green. 6 feet. 3 ft. each, 75c; doz.; \$7.50.
Large-Flowered Mock Orange. (*P. grandiflorus.*) A vigorous upright variety, with large, showy flowers in June; it grows rapidly. Height 12 feet. 3 ft., each, 75c; doz., \$7.50.

DOGWOOD (Cornus)
Red-twigged. (*C. Alba.*) Shrub with erect stem, good clean foliage and bright blood-red branches; useful for shrubberies.
Silver-leaf. (*C. mas elegantissima.*) One of the finest variegated shrubs; slow growing; leaves broadly margined with white, contrasting with the deep red bark.
Prices of the above varieties.

	Each	Doz.
2 to 3 feet -----	\$0.90	\$8.50

VIBURNUM
European High Bush Cranberry. (*V. opulus.*) One of the best shrubs for general planting. Red berries resembling cranberries remain until early winter. Height 12 feet. 2 ft., each, 75c.; 3 ft., each, \$1.00; 4 ft., each, \$1.25.

FORSYTHIA
Suspensa (Weeping Golden Bell.) Long, graceful branches drooping to the ground and covered to the tips with handsome yellow trumpet-shaped flowers in April.
Suspensa Fortunei (Golden Bell.) One of the best early flowering shrubs. Before any tree or shrub shows a leaf they burst into glorious masses of golden yellow, drooping flowers.
Prices of the above varieties:

	Each	Doz.
2 to 3 feet -----	\$0.75	\$7.50

WEIGELA
Candida. Flowering pure white, vigorous and fine habit. Height, 8 feet. 3 ft., each \$1.00; doz., \$10.00.
Rosea. A strong, symmetrical grower, with good foliage; pink flowers in June. Height, 6 feet. 2 ft., each, 75c; doz., \$7.50.

HYDRANGEA
Paniculata. Larger growing bush than the well known Grandiflora, and blooms a month later; buds do not all open. Height 12 feet. 2-ft. plants, each, 90c; doz., \$9.00.
Paniculata grandiflora. The well known hardy Hydrangea. Flowers borne in dense panicles, pure white when opening, but later of a purplish-pink. Each, \$1.00; doz., \$10.00.

HEDGE PLANTS
Privet, California. Plant 10 to 15 inches apart in double rows, alternating the plants. 18 to 24 inches high. 2-year-old, 100, \$8.50; 1000, \$60.00.
Berberis Thunbergii. Of low, dense growth and spreading habit, growing extremely dense right from the base. Requires but little pruning. Leaves bright green. The branches in the fall are covered with bright red berries. Plant 8 to 12 inches apart in single rows. 12 to 18 inches heavy, each 50c; doz.; \$4.50; 100, \$35.00. 18 to 24 inches high; heavy, each 75c; doz \$7.50; 100, \$55.00.

LILACS
Common Varieties
Purple, White, Persian, White Persian. 2 feet. Each, 75c; doz., \$6.50.

Field Grown Roses for Your Garden

We offer a very select list of Dormant Rose bushes for outdoor planting in Hybrid Tea, Hybrid Perpetual and Hardy Climbing types. The following varieties, each listed in its class, we can especially recommend for either spring or fall planting.

CULTURAL DIRECTIONS

When the rose beds are prepared, take care they have a good drainage, and that the soil is rich and sweet. Water the rose well after planting. Prune them well; if you do not know how, ask us; we will be glad to tell you the right way. Keep them clean from insects. Bush roses can be set 1½ feet apart, climbing varieties from 4 to 6 feet apart, and standard Roses 3 or more feet apart. Cultivate freely throughout the summer and apply a light top dressing of bone-meal or sheep manure at least once a month throughout the growing season. Just before the ground freezes, in late November, draw the soil up against the plant in the same manner as you would hill up potatoes, and in December, when the ground is thoroughly frozen, cover with leaves, salt hay, or straw.

The stock offered here is good healthy 2-year-old stock, which will give an abundance of bloom the following summer if planted in the fall.

Prices, \$1.00 each; 6 for \$5.00; \$10.00 per doz.; 25 for \$20.00; 100 for \$75.00, except where noted.

HYBRID TEA AND HYBRID PERPETUAL ROSES

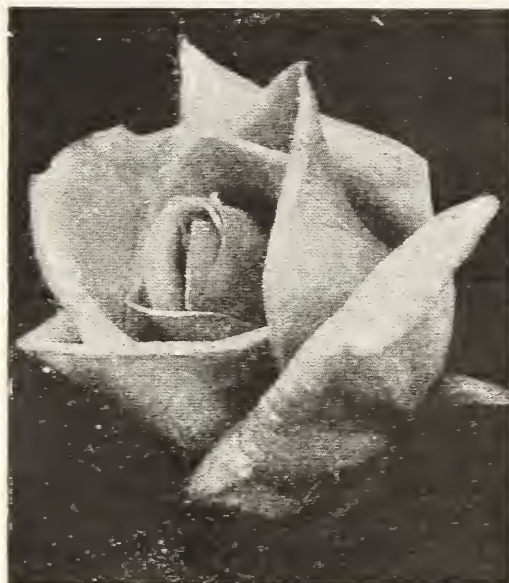
Mme. Butterfly. A sport from Ophelia, retaining all the good qualities of its parent, but with deeper shadings of apricot and gold on the salmon-pink ground. Each, \$1.50; \$15.00 per doz.

Los Angeles. New American Rose. The raisers describe this variety as by all odds one of the finest roses ever introduced. In color a luminous flame-pink, toned with coral and shaded with translucent gold at base of the petals. In fragrance it is equal in its intensity to the finest Marechal Niel. The buds are long and pointed and expand into a flower of mammoth proportions. The growth is vigorous to a degree. The beauty of form and ever-increasing wealth of color is maintained from the bud until the last petals drop. This variety should be carefully protected during the winter. \$1.50 each; \$15.00 per doz.

Alexander Hill Gray. Solid deep yellow.

Sunburst. Intense orange-copper and golden yellow; buds long and pointed; very brilliant in effect. \$1.25 each; \$12.50 per doz.

Lady Hillingdon. A very free-blooming variety with attractive flowers of deep coppery-yellow; buds long and pointed.



Sunburst

Duchess of Wellington. Saffron-yellow, stained crimson.

Columbia. A very fine shade of pink.

Crusader. A rich, velvety crimson, exceptionally rugged grower. \$1.50 each; \$15.00 per doz.

Ophelia. Light salmon pink, shading to yellow at base.

Killarney White. Snow white, fine for cutting.

Radiance. Carmine-pink, yellow at the base of petals.

Red Radiance. Dazzling crimson-scarlet.

Hadley. One of the best for outside bedding. Long stems, flowers in great profusion; scarlet.

Madame Caroline Testout. Light pink; a profuse flowerer.

Frau Karl Druschki. Hardy, vigorous grower; bright green foliage. Largest and best of all the white roses.

Paul Neyron. Deep, brilliant pink; very double and large.

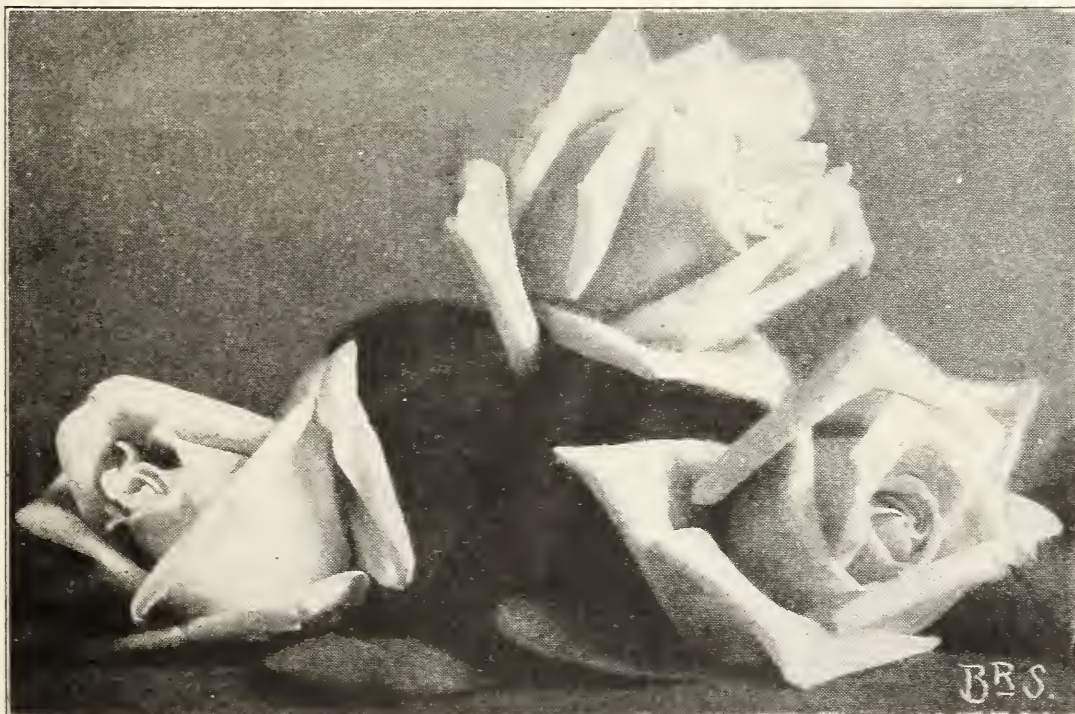
HARDY CLIMBING AND RAMBLER ROSES.

Climbing American Beauty. A healthy, vigorous grower. rose pink flowers of good substance.

Dorothy Perkins. Soft, shell pink. One of the best of the climbing varieties.

Dr. Van Fleet. Flesh pink; Splendid for cutting.

Excelsa. Scarlet crimson; borne in large clusters.



Los Angeles

Ask for a copy of our large Spring Catalogue for 1925.

Flower Seeds for Bedding and Greenhouse Culture

ANTIRRHINUM (Snapdragon)		Pkt.
Nelrose Pink	-----	\$0.50
Silver Pink	-----	.50
Dwarf Large-flowering Scarlet, White Rose	-----	.10
Dwarf Large-flowering Mixed	-----	.10
Tall Large-flowering Scarlet, White Rose	-----	.10
Tall Large-flowering Mixed	-----	.10
ASPARAGUS		100 seeds
Plumosus nanus. Greenhouse grown	-----	\$1.00
Sprengerii	-----	.50
BEGONIA, Semperflorens		Pkt.
Arfordia. Rosy carmine	-----	\$.25
Gracilis rosea. Rose	-----	.15
Gracilis luminosa. Fiery red	-----	.25
Vernon Orange-carmine	-----	.10
CALENDULA		
Prince of Orange	----- Oz., 40c	.10
Orange King	----- Oz., 40c	.10
Finest Double Mixed	----- Oz., 40c	.10
CINERARIA		
Hybrida Grandiflora. (Imported)	-----	.30
COLEUS		
Fine Hybrids. Mixed	-----	.25
CALCEOLARIA		
Giant Superb. Mixed	-----	.25
COBAEA SCANDENS		
Mixed	-----	.10
CYCLAMEN GIGANTEUM		
Giant Mixed. (Imperfect)	-----	.40
Cyclamen Persicum	-----	.25
DELPHINIUM		
Gold Medal Hybrids. (Imported.)	-----	.15
Belladonna	-----	.25
Formosum. Blue. 2½ feet	-----	.10
DIANTHUS (Hardy Garden Pinks)		
Elegant summer flowering border plants, producing a wealth of deliciously fragrant flowers.		
		Pkt.
Clove Scented. Double and semi-double varieties, in beautiful colors; fragrant	-----	\$0.10
Double Scotch. Choice mixed colors	-----	.15
Erfurt Of dwarf, compact growth; blooms early; mixed colors	-----	.10
Latifolius Atrococcineus Fl. Pl. (Everblooming Hybrid Sweet William.) Double Scarlet	-----	.10
Pheasant's Eye. Single fringed flowers; mixed colors	----- Oz., 75c	.10
DICTAMUS (Gas Plant.)		
Fraxinella. Showy, bushy plants 2½ feet high; purple red flowers; perennial; June and July	-----	.10
GLOXINIA		
Grandiflora. Mixed	-----	\$0.25
HELIOTROPE		
Giant Hybrids	-----	.15
MIGNONETTE		
Allen's Defiance	-----	.10
Bismark	-----	.10
MYOSOTIS (Forget-me-Not.)		
Alpestris Royal Blue. Rich indigo blue	-----	.10
Alpestris robusta grandiflora. Blue, large flowering	-----	.10
Alpestris Victoria. Blue; very fine	-----	.10
Alpestris Mixed. Various colors	-----	.10
Dissitiflora. Clear blue. Early flowering	-----	.10
PRIMULA (Chinese Primrose)		
Chinensis fimbriata. White, crimson, blue or Mixed	-----	.25
Obconica grandiflora. Mixed	-----	.25
Obconica gigantea. Mixed	-----	.50
Malacoides. White or Lilac	-----	.25
STOCKS, Ten Weeks		
Dwarf Large-flowering White, Bright Red, canary Yellow, Rose, Light Blue, Violet, or Carmine each	-----	.15
Mixed	-----	.10
JOHNSON'S SUPERB PANSY SEED		
Johnson's Enormous Mixed. The richest and finest mixture obtainable	-----	.50
Johnson's Universal Mixed. Very complete	-----	.50
Masterpiece. Mixed	-----	.25
Trimardeau Giant. Mixed	-----	.25
Johnson's Special Large-flowering. Mixed	-----	.10



Sweet Pea

JOHNSON'S TOP-NOTCH SWEET PEAS

Winter-blooming Orchid-flowering Forcing varieties
Invaluable for growing under glass. They bloom in about three months from time of sowing.

As a rule the finest sweet peas are produced from seed sown in the autumn. Plant about the end of November in this latitude and cover with 2 to 3 inches of leaves or litter.

We list below only a few of the very finest sorts. For complete list see our 1924 Garden Book.

Early and Long-flowering or Forcing Orchid-flowered Varieties.

Invaluable for growing under glass, also for sowing in late autumn in the Southern States. They bloom in about three months from time of sowing.

Early Aviator. Dazzling crimson-scarlet.

Early Blanche Ferry or Christmas Pink. The most popular of all; flowers pink and white. Very large and wavy.

Early Blue Bird. A splendid rich, deep blue.

Early Cream, or Meadow Lark. A bright, primrose yellow.

Early Helen Lewis, or Morning Star. Rich, rosy salmon.

Early Improved Snowstorm. This is considered the best and purest white variety.

Early Fire King. Rich deep orange-scarlet.

Early Lavender King. Beautiful clear lavender; a popular color.

Early Mrs. A. A. Skaach. A beautiful, rich pink.

Early Rose Queen. A popular soft rose-pink forcing sort.

Early Yarrowa. The famous Australian rich rose variety and one of the best.

Early Song Bird. Pale pink and buff.

Price—Any of the above 15c per pkt., \$1.00 per oz.

Collection of a packet of each of the above 12 choice varieties, \$1.25.

Early Mixed Orchid Forcing. A splendid mixture, containing all colors. 10c per pkt.; 75c per oz.; \$2.50 per ¼ lb.

FROM

Two Cent
Stamp
Here

Johnson's Seed Store

"SEEDS THAT PRODUCE"

CLEVELAND,

2158-60 E. 9th St.

OHIO

JOHNSONS' Pot Grown Strawberry Plants

Strawberries do best in rich, fairly moist soil, and may be successfully grown in any soil adapted to ordinary garden crops. The ground should be well prepared by ploughing at least 15 inches deep, and properly enriched. Where the winters are severe it is advisable to cover the plants with a mulch of coarse straw or similar material about 2 inches deep, providing it is free from weed seeds. This should be done immediately after the first freeze. In the Spring, as soon as all danger of cold weather is past, this mulch may be removed from the tops of the plants and placed around them. This will help to check the evaporation of water from the soil, help keep down the weeds and keep the berries clean.

Pot Grown Strawberry Plants. Shipped by express only. Plants ready about August 10th.

STANDARD VARIETIES

\$1.25 per doz., \$2.25 per 25, \$8.00 per 100, \$60.00 per 1000. 250 or more plants supplied at 1000 rate.

EARLY

Excelsior. An old standard. Fruit is medium size, dark in color, firm enough to ship. The flavor is quite tart but is liked by some for canning and for syrup.

Senator Dunlap. A safe sort to plant anywhere. Rampant runner, should be restricted in its production of plants; succeeds under all circumstances. Fruit good size, regular form, beautiful bright red, glossy, firm, splendid keeper, and shipper, excellent quality, one of the best for canning. Long season.

MIDSEASON

Barrymore. A round, medium-sized berry, light red in color and a good cropper.

Brandywine. Famous among commercial growers for its quality as a shipper. Color blood red; round; yields very large crops of finest quality berries.

Glen Mary. An excellent berry for quality, large size and productiveness. Usually the last berries picked are as large as the first. The color, which is a deep, glossy crimson, is very attractive. The fruit is firm and solid and of excellent flavor; broad, heart-shaped, sometimes widening at the tip.

Golden Gate. This variety is a particularly strong grower and very heavily rooted, bearing large stems and thick foliage. Produces large, strong blossoms, making an exceptional sort for planting with the pistillate sorts for pollenizing. Fruit is a rich crimson, rarely showing green tips.

Marshall. Undoubtedly an excellent berry for home use, and one of the best as an exhibition berry. The fruit is extra large and rarely misshapen. The color is one greatly admired, being a rich, glossy crimson, with the deep color running nearly to the center, while the quality is unexcelled.

Sample. The plants are large, strong and healthy, and are seldom damaged by frosts. The berries

are dark colored and uniform in size. It is the only imperfect berry we have to offer and should be planted with perfect flowering varieties.

William Belt. An "all-season" variety, fruiting from early to quite late. Very popular on account of its extreme high quality, and the fact that it does well on a great variety of soils.

LATE

Belmont. One of the standard varieties and always reliable, and without exception the berry whose flavor has not been excelled. Fruit is of medium size, firm and heavy. Color a deep, rich red, shading light at center. As to its keeping qualities it is without doubt the best.

Commonwealth. A berry of Massachusetts origin and one which has a long fruiting season; it is probably as large as any berry at the present time and fully as productive. Its color is that dark crimson so much admired and unexcelled for its fine flavor and juiciness. Plants are particularly strong in growth.

Gandy. A very late variety yielding tremendous crops of bright red berries with a somewhat smooth surface. The berries which are borne on long, upright stems, well above the leaves and dirt, are of the best quality. The best paying late berry. It requires a heavy, rich soil.

FALL BEARING VARIETIES

\$2.00 per doz., \$3.50 per 25, \$12.00 per 100. \$75.00 per 1000.

250 plants supplied at the 1000 rate.

Progressive. A very choice everbearing sort with plants similar to the Dunlap, being strong, healthy and very hardy. The Progressive is one of the most perpetual, producing good picking for approximately four months when weather is favorable. Berries of medium size, dark red inside and out. Blossoms are strongly staminate.

Superb. The fruit of this excellent variety is very large, glossy dark red color, particularly firm and choicest quality. The Superb is the largest Fall Strawberry and its glossy color makes it very attractive. The berries are of exceedingly uniform size and shape and a rich blood red from outside to center.

INDEX

	Page		Page		Page
Amaryllis	17	Spanish	20	Peonies	18
Anemones	17	Tingitana	19	Ranunculus	18
Chionodoxa	17	Ixias	17	Roses	23
Crocuses	14	Jonquils	13	Shrubs, Hardy.....	22
Daffodils	10, 11, 12	Lilies.....	13, 16, 18	Snowdrops	18
Flower Seeds.....	24	Calla	13	Spirea	18
Freesias	15	Chinese Sacred.....	13	Squill, Siberian.....	18
Fritillaria.....	17	Easter	16	Star Flower.....	18
Gladiolus	17	Hardy	16	Strawberry Plants.....	
Glory-of-the-Snow	17	Japanese	16	Inside Back Cover	
Hyacinths.....	7, 8, 9	Wood	18	Sweet Peas.....	24
Dutch Roman.....	9	Lily-of-the-Valley	14	Trillium	18
Exhibition	7	Narcissi		Triteleia	18
French Roman.....	9	Double	11	Tulips,	1, 2, 3, 4, 5, 6
Grape	17	Giant Trumpet.....	10	Double Early.....	6
Bedding	9	Medium Trumpet.....	11	Dutch Breeder.....	3
Hyacinths Glasses. We have		Paper-White	12	Giant Darwin.....	1, 2
a full stock, Not listed in		Poetax	13	Old English Cottage.....	4
catalog.		Poet's	13	Parrot	4
Irises	19, 20	Polyanthus	12	Rembrandt	4
Dutch	19	Oxalis	18	Single Early.....	5
Japanese	19	Plants, Hardy Perennial	20, 21	Striped and Feathered....	4
Siberian	19	22	Windflower	17



Johnson's High Grade Lawn Seed

Especially Prepared for Fall Sowing

Johnson's "Reliable"

THE BEST FOR GENERAL PURPOSES

Our Reliable Lawn Grass Seed is the cleanest, heaviest, cheapest and best, because it is made up of Extra Recleaned Seeds of the finest varieties of grasses, each of which has its season of beauty and the result is the production of a sod that is always evergreen and velvety. Many of the finest lawns of our city are seeded with **Johnson's Reliable Lawn Grass**, the preparation of which is a specialty with us. Less seed of Johnson's Reliable is required than of any other brand. Hence it is economical in the end. 1 lb. will sow 400 square feet. **Lb., 60c; 5 lbs., \$2.75; 10 lbs., \$5.00; 20 lbs., (1 bu.), \$9.00.**

Johnson's "Shady Spot"

This is a very high grade mixture of grasses which naturally grow in shady spots. Before sowing in such places, it is well to rake off the surface thoroughly and then apply air slacked lime at the rate of one bushel to every 1000 square feet. Use one pound of seed for every 300 square feet. **Lb., 50c; 5 lbs., \$2.25; 10 lbs., \$4.00; 20 lbs. (1 bu.), \$7.00.**

LAWN FERTILIZERS

Ground Bone Fertilizer

Stable dressing is unpleasant to handle and always contains more or less weed seeds. There are no weed seeds in this fertilizer. It will impart to your lawn that much desired dark green and velvety appearance. Should be applied as a top dressing either in spring or fall. **5 lbs., 40c; 10 lbs., 65c; 25 lbs., \$1.50; 50 lbs., \$2.50; 100 lbs., \$4.00; 200 lbs., \$7.50; 500 lbs., \$18.50; 1000 lbs. \$35.00; ton, \$60.00.**

Sheep Manure

For garden, lawn or greenhouse use nothing surpasses Sheep Manure; it is clean and easily handled, besides giving immediate results. Use 1000 lbs. per acre. **2 lbs., 15c; 5 lbs., 30c; 10 lbs., 50c; 25 lbs., \$1.10; 50 lbs., \$2.00; 100 lbs., \$3.50; 500 lbs., \$15.00.**

Johnson's "Economy" Lawn Seed

This mixture produces beautiful and permanent lawns. It is made from our own formula, and composed of grasses which are adapted for the purpose of producing a lawn which retains its rich green color and velvety appearance throughout the summer and fall. It is well suited for various soil conditions, giving good results even in small city grass plots, where the soil is generally stiff and heavy. **Lb., 45c; 5 lbs., \$2.00; 10 lbs., \$3.50; 20 lbs. (1 bu.), \$6.00.**

Golf Links Mixture

Made up from varieties of grasses perfectly adapted to rough usage. Will produce a beautiful, thick, tough lawn in a short time, and will maintain its appearance better than others in spite of wear and dry weather. For Golf Links this mixture is equal if not superior to many Golf Link Grasses now in use. **Lb., \$1.00; 5 lbs., \$4.50; 10 lbs., \$8.00; 20 lbs. (1 bu.), \$14.00.**

KENTUCKY BLUE GRASS. We handle only the fancy seed. **Lb., 60c; 5 lbs., \$2.75; 10 lbs., \$5.00.**

WHITE DUTCH CLOVER. For lawns. Should be sown in the spring or early fall. **Lb., 90c; 5 lbs., \$4.25; 10 lbs., \$8.00.**

Agricultural Hydrated Lime

In sacks weighing 50 lbs. \$1.50 per sack. Delivered anywhere in the city. Write for prices in ton lots.

Beware of Stable Manure. It will fill your lawn with weeds and cause you many times the cost of a good commercial fertilizer such as Sheep Manure or Bone Dust.

NITRATE OF SODA. **Lb., 15c; 5 lbs., 50c; 10 lbs., 90c; 25 lbs., \$2.00; 50 lbs., \$3.50; 100 lbs., \$6.00.**

Garden and Lawn Fertilizers

25-lb. bag for 2,500 square feet of lawn or 1,200 square feet of garden, \$1.50; 50-lb. bag for 5,000 square feet of lawn, of 2,500 square feet of garden; \$2.75; 100-lb. bag for one-fourth acre of lawn, or one-eighth acre of garden, \$5.00.

JOHNSON'S SEED STORE Cleveland, Ohio

2158-60 East Ninth St., Near Prospect.

Bell Phone, Cherry 911

THE HOME OF "SEEDS THAT PRODUCE"