

1139

United States Department of the Interior  
National Park Service

RECEIVED

SEP 20 1993

NATIONAL REGISTER

National Register of Historic Places  
Registration Form

This form is for use in nominating or requesting determinations for individual properties and districts. See instructions in *How to Complete the National Register of Historic Places Registration Form* (National Register Bulletin 16A). Complete each item by marking "x" in the appropriate box or by entering the information requested. If an item does not apply to the property being documented, enter "N/A" for "not applicable." For functions, architectural classification, materials, and areas of significance, enter only categories and subcategories from the instructions. Place additional entries and narrative items on continuation sheets (NPS Form 10-900a). Use a typewriter, word processor, or computer, to complete all items.

1. Name of Property

historic name Brumfield High School

other names/site number Brumfield School

2. Location

street & number 100 St. Catherine Street n/a  not for publication

city or town Natchez n/a  vicinity

state Mississippi code MS county Adams code 1 zip code 39120

3. State/Federal Agency Certification

As the designated authority under the National Historic Preservation Act, as amended, I hereby certify that this  nomination  request for determination of eligibility meets the documentation standards for registering properties in the National Register of Historic Places and meets the procedural and professional requirements set forth in 36 CFR Part 60. In my opinion, the property  meets  does not meet the National Register criteria. I recommend that this property be considered significant  nationally  statewide  locally. ( See continuation sheet for additional comments.)

Kenneth H. Pool SEPT. 17, 1993  
Signature of certifying official/Title Date

Deputy State Historic Preservation Officer  
State of Federal agency and bureau

In my opinion, the property  meets  does not meet the National Register criteria. ( See continuation sheet for additional comments.)

\_\_\_\_\_  
Signature of certifying official/Title Date

\_\_\_\_\_  
State or Federal agency and bureau

4. National Park Service Certification

I hereby certify that the property is:

- entered in the National Register.  See continuation sheet.
- determined eligible for the National Register  See continuation sheet.
- determined not eligible for the National Register.
- removed from the National Register.
- other, (explain:)

Signature of the Keeper entered in the Date of Action

Delores Ryan National Register 10/21/93

5. Classification

Ownership of Property  
(Check as many boxes as apply)

- private
- public-local
- public-State
- public-Federal

Category of Property  
(Check only one box)

- building(s)
- district
- site
- structure
- object

Number of Resources within Property  
(Do not include previously listed resources in the count.)

Contributing	Noncontributing	
1		buildings
		sites
		structures
		objects
1	0	Total

Name of related multiple property listing  
(Enter "N/A" if property is not part of a multiple property listing.)

N/A

Number of contributing resources previously listed  
in the National Register

0

6. Function or Use

Historic Functions  
(Enter categories from instructions)

EDUCATION: school

Current Functions  
(Enter categories from instructions)

VACANT/NOT IN USE

7. Description

Architectural Classification  
(Enter categories from instructions)

Classical Revival

Materials  
(Enter categories from instructions)

foundation brick

walls brick

roof asphalt

other n/a

Narrative Description

(Describe the historic and current condition of the property on one or more continuation sheets.)

United States Department of the Interior  
National Park Service

## National Register of Historic Places Continuation Sheet

Brumfield High School, Natchez, Adams County, Mississippi

Section number 7 Page 1

---

Brumfield School is a two-story, H-plan, brick public school building executed in the Classical Revival style. The building and its property are bounded on the north by St. Catherine Street, on the east by Sixth Street, and on the south by East Franklin Street. The building's basement is partially raised and its walls extend to form parapets on all but the rear elevation. The northerly facade of the building is divided into nine bays of recessed panels, each filled by two window openings except for the first-story center bay which contains the primary entrance. The two bays at each end of the facade are located in corner projections. Each recessed bay of the corner projections and the second-story center bay are filled with two, three-over-three, double-hung window sash. The remaining recessed bays of the facade are filled with paired, three-over-three, double-hung sash set within a single enframingent. The basement window configurations correspond to the upper stories with the window openings containing a much shorter three-over-three sash unit. A wooden, modillioned cornice extends the full width of the facade, wraps around the corner projections, and is repeated in a smaller version above the entrance doorway, where it extends the full width of the center-bay panel. Also extending the full-width of the center-bay panel is the architrave of the entrance doorway, which features a keystone, elliptically arched opening filled with double-leaf glazed doors set within an elliptical transom and flanking sidelights. Leading from the front entrance doorway to the front walk are the original concrete steps which are enclosed at each end by stepped brick walls with concrete coping. A second, similar set of steps which lead from the front lawn of the building to the sidewalk.

The matching eastern and western side elevations of the building consist of a recessed block of four bays of recessed panels flanked by projecting blocks at each corner with three bays of recessed panels. All panels feature two window openings filled with three-over-three, double-hung sash. Side entrances are located in semi-circular arched openings in the center most first-story bays of the projecting blocks. The two entrances of the eastern side elevation have lost all their original infill and are now filled with mid-twentieth-century, double-leaf doors with glazed upper panels set within slightly recessed, non-original brick infill. These entrances were apparently altered when new stair systems were installed to meet updated fire codes. The western side elevation contains entrances that are predominantly original and are located in a recessed alcove with beaded-board facade and pressed metal ceiling. Each entrance doorway consists of two-panel, double-leaf doors set within a glazed transom and sidelights over flush board panels. Short flights of concrete steps with side enclosures provide access from the side entrances to walks along the sides of the building.

The rear elevation of the building is not elaborated with the parapet walls or recessed panels of the other three elevations and features eight bays of windows flanking what were originally first and second-story center-bay entrances. The first-story entrance has been altered by

United States Department of the Interior  
National Park Service

## National Register of Historic Places Continuation Sheet

Brumfield High School, Natchez, Adams County, Mississippi

Section number 7 Page 2

---

the replacement of the original entrance infill with a pair of windows set into later brick infill, but the original concrete steps survive. The second-story entrance now consists of double-leaf, two-panel doors with glazed upper panels set beneath a transom. This second-story entrance now leads only to a metal porch landing and is sheltered by a cantilevered porch roof. It appears that a fire escape probably originally descended from the landing.

Just inside the primary entrance, which opens into the main floor, is a screen of double-leaf glazed doors flanked by a matching, fixed single leaf door, all set beneath a glazed transom. Pressed metal ceilings, partially obscured by modern dropped ceilings, are a feature of both the upper two floors of the building. The interior millwork is plainly trimmed throughout. Two-panel interior doors have upper glazed panels and are set beneath transoms. Door surrounds are plain with unmolded back-bands, and windows are set into the plaster walls without wooden surrounds or jambs. Window aprons and baseboards are plain. Two original stair systems are located on the western side of the building and are very plainly detailed with square, paneled newels and a balustrade composed of a shaped handrail atop panels of beaded-board. The staircases on the eastern side of the building are modern, constructed of concrete, and probably a response to updated fire code regulations. The basement features nicely detailed, cast-iron supporting posts. The overall integrity of the building is good, with exterior alterations limited primarily to altered infill on the rear and side entrances and interior alterations limited to the installation of two new stair systems and modern ceiling panels and to the later partitioning of some interior spaces.

8. Statement of Significance

Applicable National Register Criteria

(Mark "x" in one or more boxes for the criteria qualifying the property for National Register listing.)

- A Property is associated with events that have made a significant contribution to the broad patterns of our history.
- B Property is associated with the lives of persons significant in our past.
- C Property embodies the distinctive characteristics of a type, period, or method of construction or represents the work of a master, or possesses high artistic values, or represents a significant and distinguishable entity whose components lack individual distinction.
- D Property has yielded, or is likely to yield, information important in prehistory or history.

Criteria Considerations

(Mark "x" in all the boxes that apply.)

Property is:

- A owned by a religious institution or used for n/a religious purposes.
- B removed from its original location.  
n/a
- C a birthplace or grave.  
n/a
- D a cemetery.  
n/a
- E a reconstructed building, object, or structure.  
n/a
- F a commemorative property.  
n/a
- G less than 50 years of age or achieved significance n/a within the past 50 years.

Areas of Significance

(Enter categories from instructions)

ETHNIC HERITAGE: BLACK

EDUCATION

ARCHITECTURE

Period of Significance

1925-1943

Significant Dates

1925

Significant Person

(Complete if Criterion B is marked above)

N/A

Cultural Affiliation

N/A

Architect/Builder

Steintenroth, William/architect

Ketteringham and Lawrence/builder

Narrative Statement of Significance

(Explain the significance of the property on one or more continuation sheets.)

9. Major Bibliographical References

Bibliography

(Cite the books, articles, and other sources used in preparing this form on one or more continuation sheets.)

Previous documentation on file (NPS):

- preliminary determination of individual listing (36 CFR 67) has been requested
- previously listed in the National Register
- previously determined eligible by the National Register
- designated a National Historic Landmark
- recorded by Historic American Buildings Survey # \_\_\_\_\_
- recorded by Historic American Engineering Record # \_\_\_\_\_

Primary location of additional data:

- State Historic Preservation Office
- Other State agency
- Federal agency
- Local government
- University
- Other

Name of repository:

Historic Natchez Foundation

Brumfield High School  
Name of Property

Adams County, Mississippi  
County and State

**10. Geographical Data**

Acreage of Property 1.12 acres plus or minus

**UTM References**

(Place additional UTM references on a continuation sheet.)

1 

1	5
---	---

6	5	2	5	7	5
---	---	---	---	---	---

3	4	9	2	2	9	0
---	---	---	---	---	---	---

  
Zone Easting Northing

3 

--	--

--	--	--	--	--	--	--	--	--	--

--	--	--	--	--	--	--	--	--	--

  
Zone Easting Northing

See continuation sheet

**Verbal Boundary Description**

(Describe the boundaries of the property on a continuation sheet.)

**Boundary Justification**

(Explain why the boundaries were selected on a continuation sheet.)

**11. Form Prepared By**

name/title Mary W. Miller/Preservation Director

organization Historic Natchez Foundation date June 20, 1993

street & number P. O. Box 1761 telephone (601) 442-2500

city or town Natchez state MS zip code 39121

**Additional Documentation**

Submit the following items with the completed form:

**Continuation Sheets**

**Maps**

A USGS map (7.5 or 15 minute series) indicating the property's location.

A Sketch map for historic districts and properties having large acreage or numerous resources.

**Photographs**

Representative black and white photographs of the property.

**Additional Items**

(Check with the SHPO or FPO for any additional items)

**Property Owner**

(Complete this item at the request of SHPO or FPO.)

name Natchez-Adams County Public Schools

street & number 10 Homochitto Street telephone (601) 442-0212

city or town Natchez state MS zip code 39120

**Paperwork Reduction Act Statement:** This information is being collected for applications to the National Register of Historic Places to nominate properties for listing or determine eligibility for listing, to list properties, and to amend existing listings. Response to this request is required to obtain a benefit in accordance with the National Historic Preservation Act, as amended (16 U.S.C. 470 *et seq.*).

**Estimated Burden Statement:** Public reporting burden for this form is estimated to average 18.1 hours per response including time for reviewing instructions, gathering and maintaining data, and completing and reviewing the form. Direct comments regarding this burden estimate or any aspect of this form to the Chief, Administrative Services Division, National Park Service, P.O. Box 37127, Washington, DC 20013-7127; and the Office of Management and Budget, Paperwork Reductions Projects (1024-0018), Washington, DC 20503.

United States Department of the Interior  
National Park Service

## National Register of Historic Places Continuation Sheet

Brumfield High School, Natchez, Adams County, Mississippi

Section number 8 Page 1

---

Brumfield School is the most architecturally and historically significant twentieth-century building associated with the African American community in Natchez. The building is a good representative example of twentieth-century, Classical Revival institutional architecture, its construction is well documented, and it exhibits a high degree of architectural integrity. Adding to Brumfield's significance is its location on St. Catherine Street, a street which is important as the location of sites and buildings with local, state, and national historical significance to African-American history.

Built as the "new colored high school" in 1925 by the City of Natchez, Brumfield was designed by local Natchez architect William Steintenroth (*The Natchez Democrat*, October 22, 1925, p. 7 and Minutes, Mayor/Aldermen [Natchez], Book 27, January 1923-October 16, 1928, October 14, 1924, p. 199). The school was built by local contractors Ketteringham and Lawrence with Jesse Spencer doing the brickwork and Thomas J. Holmes, the heating and plumbing (*The Natchez Democrat*, April 15, 1925, p. 1 and July 19, 1925, 2nd section, p. 1 and Minutes, Book 27, December 22, 1925, p. 334).

The construction of the "new colored high school" preceded, by a few years, the construction of a comparable high school for white students on Homochitto Street (Minutes, Book 27, March 11, 1927, p. 474). The school was financed by municipal bonds in the amount of \$75,000 and a plea by the school board to the mayor and aldermen for its construction included the information that the existing Union School for black children [on the southeast corner of North Union and Monroe streets] had only thirteen rooms and housed 948 children. The plea stated that as many as 120 children were crowded into a single classroom in the lower grades (Minutes, Book 27, July 22, 1924, p. 173). Brumfield was the first secondary school building built for African Americans in Natchez, and it played an important role in educating African Americans in the Natchez community from its opening as a high school in 1925 until its closing as a pre-school facility in 1990. The social history of the Natchez African-American community is also closely tied to Brumfield High School. Before the Civil Rights movement unlocked doors to public auditoriums, hotels, and restaurants, the African-American community relied heavily on its churches and schools as headquarters for almost all social occasions.

Brumfield was completed in late 1925 for a cost of approximately \$80,000. School furnishings cost about \$5,000 (*The Natchez Democrat*, July 15, 1925). The "Colored Parent Teacher Association," headed by C. M. Dumas, raised \$1,500 to be used for furnishing the Domestic Science Department. When making the presentation to the mayor and aldermen, Dumas thanked the city "on behalf of the Colored Citizens for making it possible for the erection

United States Department of the Interior  
National Park Service

## National Register of Historic Places Continuation Sheet

Brumfield High School, Natchez, Adams County, Mississippi

Section number 8 Page 2

---

of one of the finest public school buildings in the South for colored children (Minutes, Book 27, December 22, 1925, p. 334)." Although the City of Natchez gave precedence to the construction of a black high school, it would later spend over three times as much money to build a new separate high school facility for white students (Minutes, Book 27, March 11, 1927, p. 474).

Brumfield School was named for George Washington Brumfield, a Natchez educator who, "for more than 25 years was principal of the colored public schools of Natchez." Professor G. W. Brumfield was born in Yazoo County, Mississippi, in 1866 and taught school in Yazoo County before moving to Natchez in the 1890's. He was superintendent of the Sunday school at Zion Chapel African Methodist Episcopal Church and resided on St. Catherine Street, where Brumfield is located (*The Natchez Democrat*, January 18, 1927).

Brumfield High School became an elementary school and finally a pre-school, when it housed the Adams County Head Start Program. Although for National Register purposes the period of significance extends only to 1943 to satisfy the fifty-year requirement, Brumfield continued to play an important educational role through the 1989-90 school term. During the past three years, Brumfield School has been abandoned by the Natchez-Adams County School System and has become a favorite target of neighborhood vandals. The building has been optioned by the Gleichman Company of Portland, Maine, who are working with the City of Natchez and the Historic Natchez Foundation to renovate the historic school building into an apartment building.

Brumfield School is one of the most dominant buildings on St. Catherine Street, which is important historically as the location of buildings and sites that are of local, state, and national significance for African-American history. At the downtown intersection where St. Catherine originates is located Zion Chapel African Methodist Episcopal Church, which was pastored in the 1860's by Hiram Revels, the first African-American to serve in either house of the United States Congress. At its easterly limit, the historic junction of St. Catherine Street, the Road to Washington, and Liberty Road, was located the "Forks of the Road" slave market, one of the two busiest slave markets in the United States in the three decades before the Civil War. The ancestors of many African-Americans all across the United States passed through the slave markets at the "Forks of the Road" in Natchez and at Algiers in New Orleans. Along St. Catherine Street are buildings and sites like Holy Family Catholic Church, the first Catholic Church built for African-Americans in Mississippi; the home of Louis J. Winston, a prominent African American attorney in post-Civil War Natchez; and the site of the Rhythm Club, where 209 African-Americans perished in a fire in 1940.



United States Department of the Interior  
National Park Service

## National Register of Historic Places Continuation Sheet

Brumfield High School, Natchez, Adams County, Mississippi

Section number   9   Page   1  

---

Natchez. City of Natchez, Mississippi. Minutes, Mayor/Aldermen,  
Book 27.

The Natchez (Mississippi) Democrat, April, 15, 1925; July 15, 1925,  
July 19, 1925; and October 22, 1925.

United States Department of the Interior  
National Park Service

## National Register of Historic Places Continuation Sheet

Brumfield High School, Natchez, Adams County, Mississippi

Section number 10 Page 1

---

### VERBAL BOUNDARY DESCRIPTION

The nominated property is located on Adams County Tax Map 29, block 15, parcel 1. See attached map with nominated property circled. The property extends 161 feet along St. Catherine Street, 324 feet along Sixth Street, 162 feet along East Franklin Street, and 300 feet along its western boundary.

### BOUNDARY JUSTIFICATION:

The nominated property includes all the land presently and historically associated with Brumfield High School.

United States Department of the Interior  
National Park Service

**National Register of Historic Places  
Continuation Sheet**

Brumfield High School, Natchez, Adams County, Mississippi

Section number Photos Page 1

---

The following information is the same for all photographs:

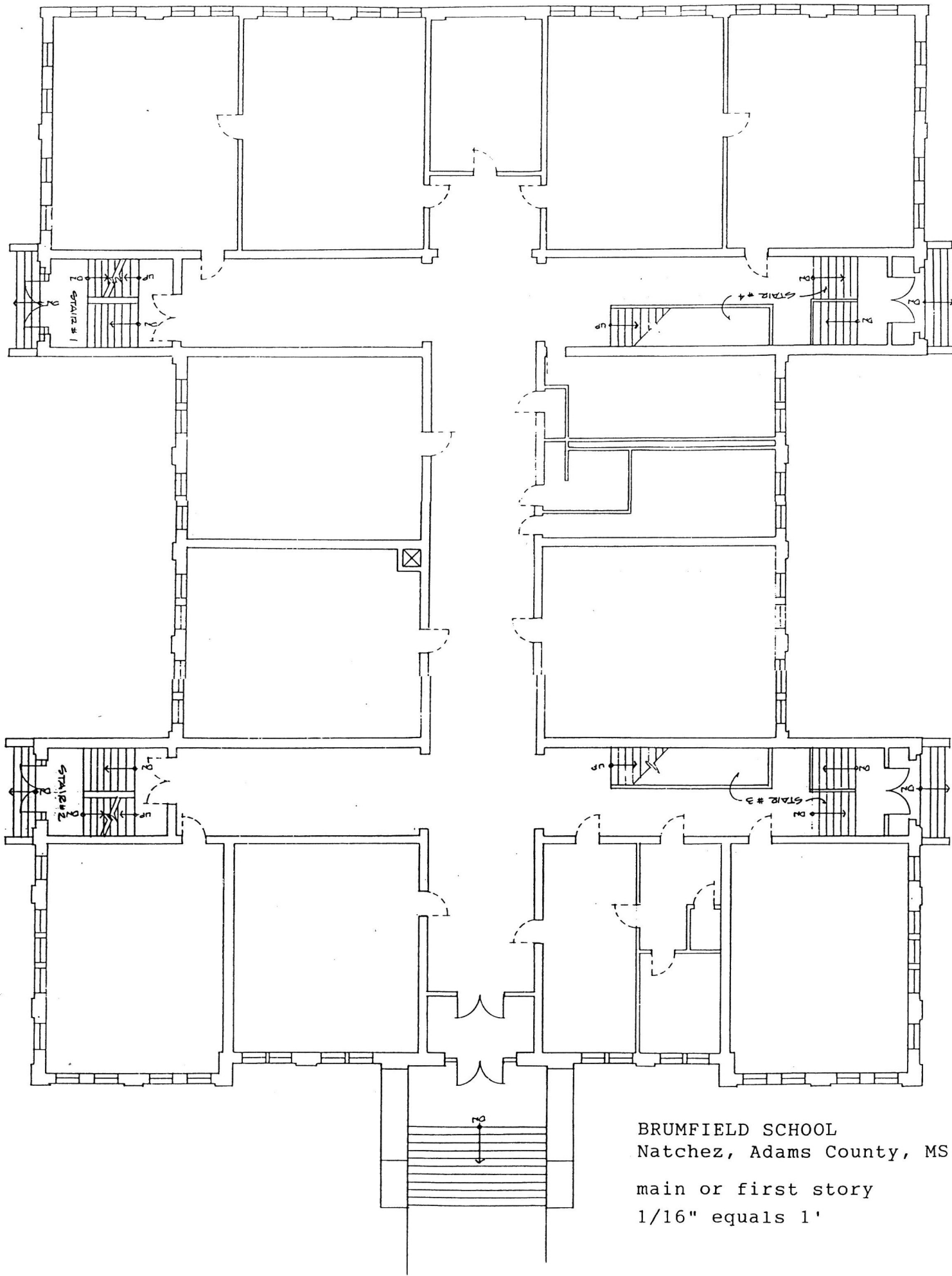
- (1) Brumfield High School
- (2) Natchez, Adams County, Mississippi
- (3) Mary W. Miller
- (4) May 1993
- (5) Historic Natchez Foundation

Photo 1--(6) Looking southwesterly, the northerly facade.

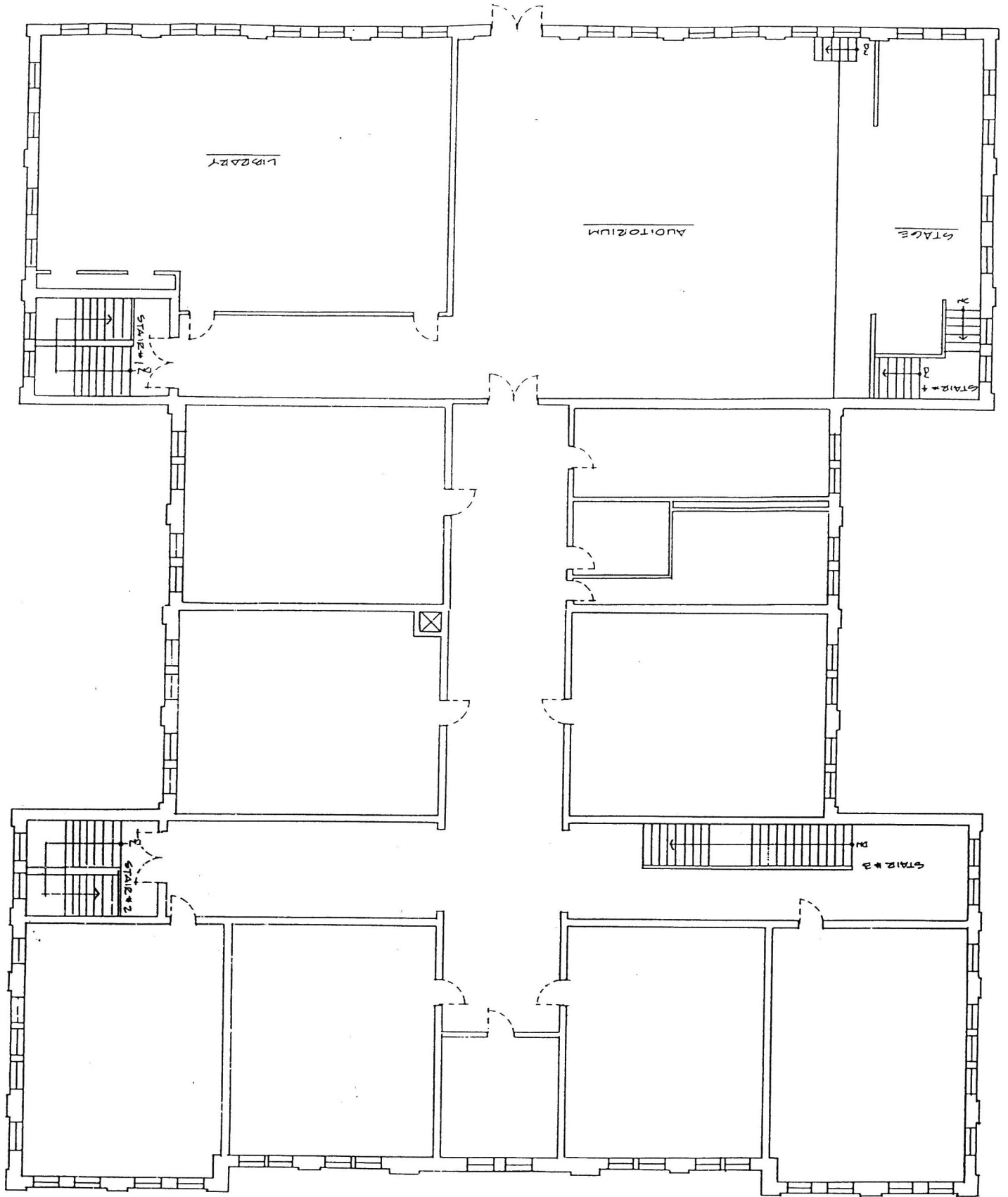
Photo 2--(6) Looking southerly, the entrance doorway of the northerly facade.

Photo 3--(6) Looking northwesterly, the southerly rear elevation and school playground.

Photo 4--(7) Looking southwesterly, a typical classroom with pressed metal ceiling.

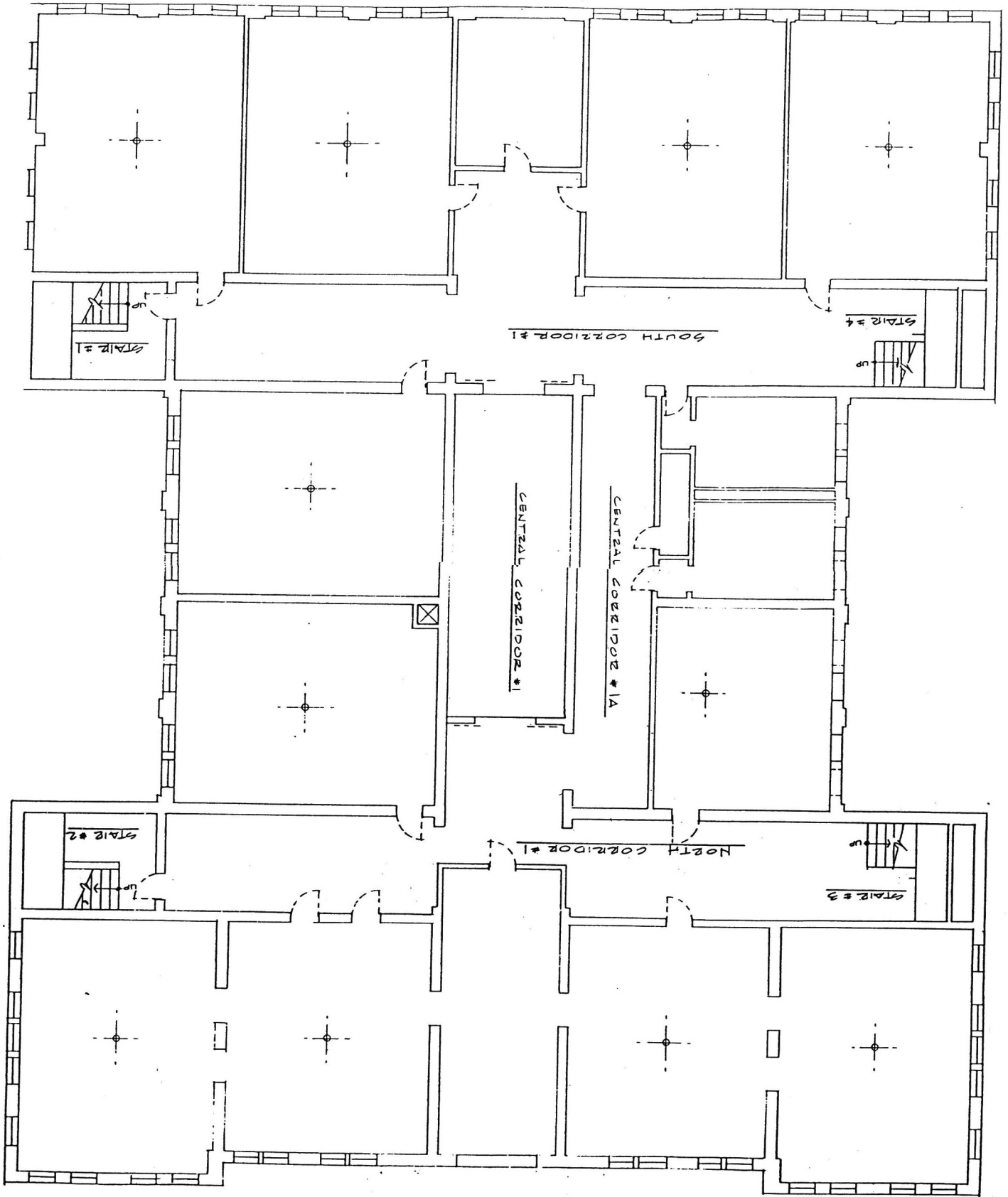


BRUMFIELD SCHOOL  
 Natchez, Adams County, MS  
 main or first story  
 1/16" equals 1'



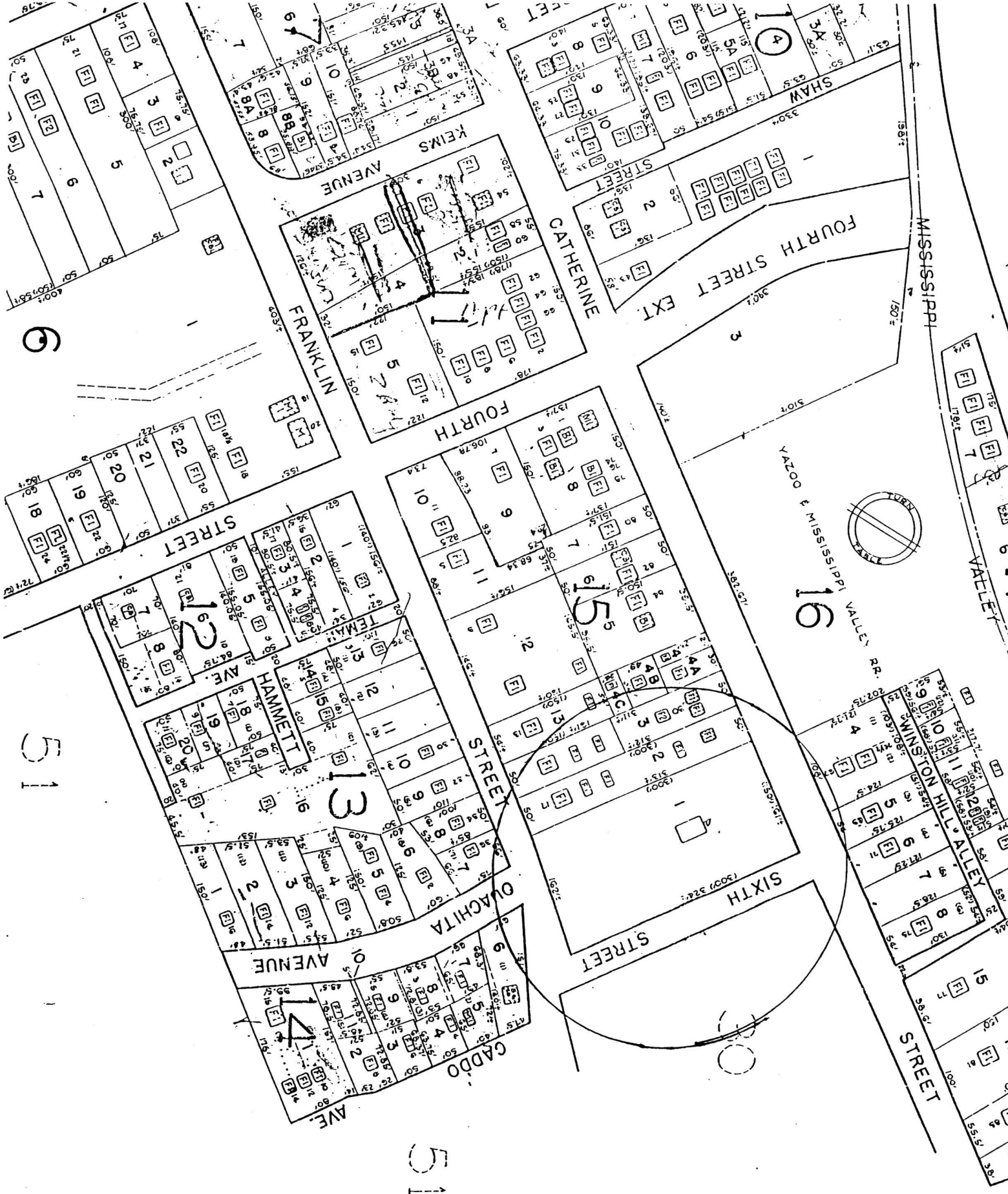
BRUMFIELD SCHOOL  
Natchez, Adams County, MS

second story  
1/16" equals 1'



BRUMFIELD SCHOOL  
Natchez, Adams County, MS

basement story  
1/16" equals 1'



Adams County Tax Map 29, block 15, parcel 1

Brumfield High School, Natchez, Adams County, Mississippi 39120

UNITED STATES DEPARTMENT OF THE INTERIOR  
NATIONAL PARK SERVICE

NATIONAL REGISTER OF HISTORIC PLACES  
EVALUATION/RETURN SHEET

REQUESTED ACTION: NOMINATION

PROPERTY NAME: Brumfield High School

MULTIPLE NAME:

STATE & COUNTY: MISSISSIPPI, Adams

DATE RECEIVED: 9/20/93      DATE OF PENDING LIST: 10/05/93  
DATE OF 16TH DAY: 10/21/93      DATE OF 45TH DAY: 11/04/93  
DATE OF WEEKLY LIST:

REFERENCE NUMBER: 93001139

NOMINATOR: STATE

REASONS FOR REVIEW:

APPEAL: N    DATA PROBLEM: N    LANDSCAPE: N    LESS THAN 50 YEARS: N  
OTHER: N    PDIL: N    PERIOD: N    PROGRAM UNAPPROVED: N  
REQUEST: N    SAMPLE: N    SLR DRAFT: N    NATIONAL: N

COMMENT WAIVER: N

ACCEPT     RETURN     REJECT    10/21/93 DATE    **Entered in the  
National Register**

ABSTRACT/SUMMARY COMMENTS:

RECOM./CRITERIA \_\_\_\_\_  
REVIEWER \_\_\_\_\_  
DISCIPLINE \_\_\_\_\_  
DATE \_\_\_\_\_

DOCUMENTATION see attached comments Y/N see attached SLR Y/N



---

CLASSIFICATION

count       resource type

---

STATE/FEDERAL AGENCY CERTIFICATION

---

FUNCTION

historic       current

---

DESCRIPTION

architectural classification  
 materials  
 descriptive text

---

SIGNIFICANCE

Period      Areas of Significance--Check and justify below

Specific dates      Builder/Architect  
Statement of Significance (in one paragraph)

summary paragraph  
 completeness  
 clarity  
 applicable criteria  
 justification of areas checked  
 relating significance to the resource  
 context  
 relationship of integrity to significance  
 justification of exception  
 other

---

BIBLIOGRAPHY

---

GEOGRAPHICAL DATA

acreage       verbal boundary description  
 UTM's       boundary justification

---

ACCOMPANYING DOCUMENTATION/PRESENTATION

sketch maps     USGS maps     photographs     presentation

---

OTHER COMMENTS

Questions concerning this nomination may be directed to

\_\_\_\_\_ Phone \_\_\_\_\_

Signed \_\_\_\_\_ Date \_\_\_\_\_







Brumfield High School  
Natchez, Adams Co., MS  
Photo 2 of 4

THIS PAPER  
MANUFACTURED  
BY KODAK

THIS PAPER  
MANUFACTURED  
BY KODAK

THIS PAPER  
MANUFACTURED  
BY KODAK

THIS PAPER  
MANUFACTURED  
BY KODAK

THIS PAPER  
MANUFACTURED  
BY KODAK

THIS PAPER  
MANUFACTURED  
BY KODAK

THIS PAPER  
MANUFACTURED  
BY KODAK

THIS PAPER  
MANUFACTURED  
BY KODAK

THIS PAPER  
MANUFACTURED  
BY KODAK

THIS PAPER  
MANUFACTURED  
BY KODAK

THIS PAPER  
MANUFACTURED  
BY KODAK

THIS PAPER  
MANUFACTURED  
BY KODAK

THIS PAPER  
MANUFACTURED  
BY KODAK

THIS PAPER  
MANUFACTURED  
BY KODAK

THIS PAPER  
MANUFACTURED  
BY KODAK

THIS PAPER  
MANUFACTURED  
BY KODAK

THIS PAPER  
MANUFACTURED  
BY KODAK

THIS PAPER  
MANUFACTURED  
BY KODAK

THIS PAPER  
MANUFACTURED  
BY KODAK

THIS PAPER  
MANUFACTURED  
BY KODAK

THIS PAPER  
MANUFACTURED  
BY KODAK

THIS PAPER  
MANUFACTURED  
BY KODAK



Brumfield High School  
Natchez, Adams Co. MS  
Photo 3 of 4

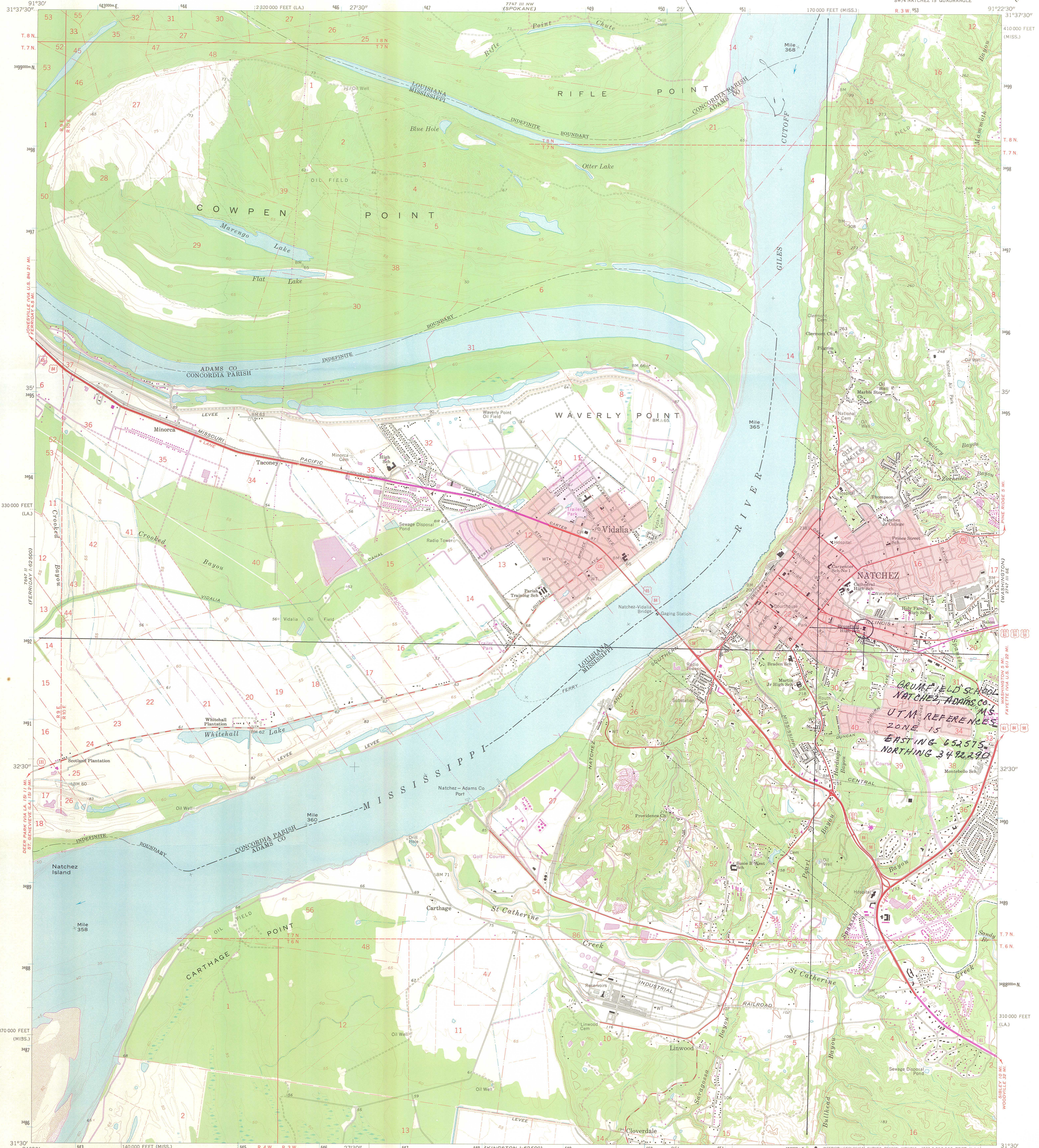
THIS PAPER  
MANUFACTURED  
BY KODAK



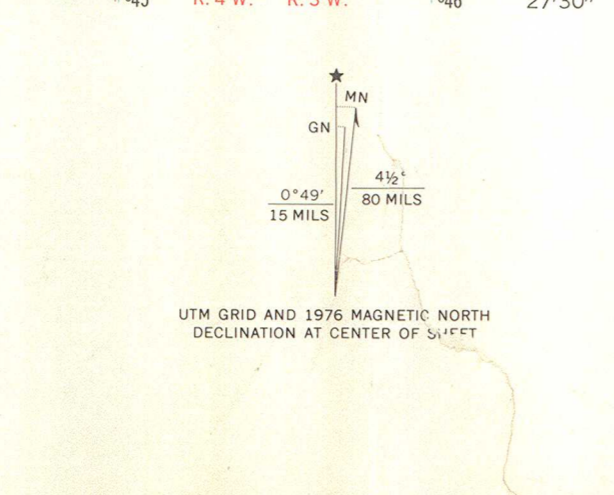


Brunfield High School  
Natchez, Adams Co., MS  
Photo 4 of 4





Maped, edited, and published by the Geological Survey  
Control by USGS, USC&GS, and USCE  
Topography by photogrammetric methods from aerial  
photographs taken 1962 and planetable surveys 1963  
Polyconic projection. 1927 North American datum  
10,000-foot grids based on Mississippi coordinate system, west zone  
and Louisiana coordinate system, north zone  
1000-meter Universal Transverse Mercator grid ticks,  
zone 15, shown in blue  
Red tint indicates areas in which only landmark buildings are shown  
Fine red dashed lines indicate selected fence and field lines where  
generally visible on aerial photographs. This information is unchecked  
Revisions shown in purple compiled from aerial photographs  
taken 1976. This information not field checked  
Purple tint indicates extension of urban areas



SCALE 1:24,000  
CONTOUR INTERVAL 20 FEET  
DOTTED LINES REPRESENT 5-FOOT CONTOURS  
NATIONAL GEODETIC VERTICAL DATUM OF 1929  
THIS MAP COMPLIES WITH NATIONAL MAP ACCURACY STANDARDS  
FOR SALE BY U. S. GEOLOGICAL SURVEY, DENVER, COLORADO 80225, OR RESTON, VIRGINIA 22092  
AND STATE OF LOUISIANA, DEPARTMENT OF PUBLIC WORKS, BATON ROUGE, LOUISIANA 70804  
A FOLDER DESCRIBING TOPOGRAPHIC MAPS AND SYMBOLS IS AVAILABLE ON REQUEST

ROAD CLASSIFICATION  
Heavy-duty — Light-duty  
Medium-duty — Unimproved dirt  
U.S. Route — State Route  
NATCHEZ, MISS.-LA.  
SW/4 NATCHEZ 15' QUADRANGLE  
N3130—W9122.5/7.5  
1963  
PHOTOREVISED 1976  
AMS 2747 III SW—SERIES V843



# Mississippi Department of Archives and History

Historic Preservation Division • Post Office Box 571 • Jackson, Mississippi 39205-0571  
Telephone 601-359-6940

September 17, 1993

Ms. Carol D. Shull  
Chief of Registration  
National Register of Historic Places  
Interagency Resources Division  
National Park Service  
P.O. Box 37127  
Code 710  
Washington, DC 20013-7127

RECEIVED  
SEP 20 1993  
NATIONAL  
REGISTER

Dear Ms. Shull:

We are pleased to submit the nomination form, maps, and photographs for Brumfield High School in Natchez, Adams County, Mississippi.

This property was approved for nomination by the Mississippi Historic Preservation Professional Review Board at its meeting on September 16, 1993.

We trust that you will find the enclosed materials in order and will let us hear from you at your convenience.

Sincerely,

Kenneth H. P'Pool  
Deputy State Historic  
Preservation Officer

brc

Enclosures