



Hefte 91-96 mit je 24 Kupfer-  
und je 1 Textblatt

coll. spl. Bk. 22/vm. 50

126

von Müllersstein







- Nro. 1 *Aphodius obscurus* Fabric.  
— 2 *Aphodius nitidulus* Fabric.  
— 3 *Byrrhus aeneus* Fabric.  
— 4 *Spercheus emarginatus* Fabric.  
— 5 *Hydrachna gibba* Fabric.  
— 6 *Dytiscus bipunctatus* Fabric.  
— 7 *Dytiscus stagnalis* Fabric.  
— 8 *Peltis limbata* Fabr.  
— 9 *Crioceris nigricornis* Fabr.  
— 10 *Crioceris adusta* Fabr.  
— 11 *Lema quinquepunctata* Fabr.  
— 12 *Lema melanopa* Fabr.  
— 13 *Allantus Tiliae* Panzer.  
— 14 *Allantus Rubi* Panzer.  
— 15 *Allantus Roffii* Jurine.  
— 16 *Allantus ferus* Panzer.  
— 17 *Allantus quadrimaculatus* Panzer.  
— 18 *Allantus Sambuci* Panzer.  
— 19 *Allantus obscurus* Panzer.  
— 20 *Syrphus apiarius* Fabr.  
— 21 *Syrphus Ranunculi* Panzer.  
— 22 *Empis pennata* Panzer.  
— 23 *Noctua bimaculosa* Fabr.  
— 24 *Noctua Oxycanthae* Fabr.
-





*Aphodius obscurus* Fabr.



APHODIUS obscurus.

*Der dunckelschwarze doppeltgestreifte Dungkäfer.*

*APHODIUS obscurus*: capite tuberculis tribus obsoletis Elytris striatis. *Fabricius*  
Syst. Eleuth. T. I. n. 14. p. 71. Ent. system. T. I. n. 79. p. 71.

*APHODIUS thermicola*. *Sturm*. Handb. I. n. 35. p. 44. tab. II. fig. T.  
Habitat in Austria, ad thermas badenses.

Thorax antice utrinque puncto oblongo impressus. Elytra ob puncta numerosiora vix nitida hinc obscuriora; striis gemellatis seu per paria approximatis, interiectis punctis ex cavatis more crenularum dispositis; interstitiis punctis plurimis impressis, quandoquidem confluentibus, hinc rugulas mentientibus: tuberculis humeralibus saepius rufescentibus. Pedes intensius nigri, tarsis solis piceis seu obscure rufescentibus. Anus ciliatus.

a Magnitudo naturalis. b Eadem aucta.





*Aphodius nitidulus* Fabr.





**APHODIUS nitidulus.**

*Der wachsgelbe glänzende Dungkäfer.*

*APHODIUS nitidulus* : capite quadrituberculato ferrugineus, elytris pallidis. *Fabric.* Syst. Eleuth. T. I. n. 32. p. 75. Ent. syst. T. I. n. 94. p. 30.

*SCARABAEUS ictericus.* *Paykull.* Fn. Suec. T. I. n. 21. p. 17.

*APHODIUS ictericus.* *Creutzer* Entom. Versf. n. 15. p. 52. tab. I. fig. 8. a.

*APHODIUS ictericus.* *Sturm* Handb. I. n. 21. p. 32.

Habitat in editioribus in stercore.

Variat clypeus obscure ferrugineus, obscurus cum umbra ferruginea, seu niger puncto apicis maiusculo ferrugineo. Variant tubercula, aut nulla, obsoleta, aut tria. Elytra ictericia, striata: striis haud crenatis sed punctis adeo exilibus, ut nisi attentius inspicias, vix ulla adsint.

a Magnitudo naturalis. b Eadem aucta.





*Byrrhus aeneus* Fabr.



BYRRHUS aeneus.

*Der bronzefarbige Fugenkäfer.*

*BYRRHUS aeneus*: aeneus scutello albo. *Fabric.* Syst. Eleuth. T. I. n. 11. p. 105.

Syst. Ent. n. 3. p. 60. Spec. Inf. T. I. n. 4. p. 70. Mant. Inf. T. I. n. 6.  
p. 38. Ent. syst. T. I. n. 8. p. 86.

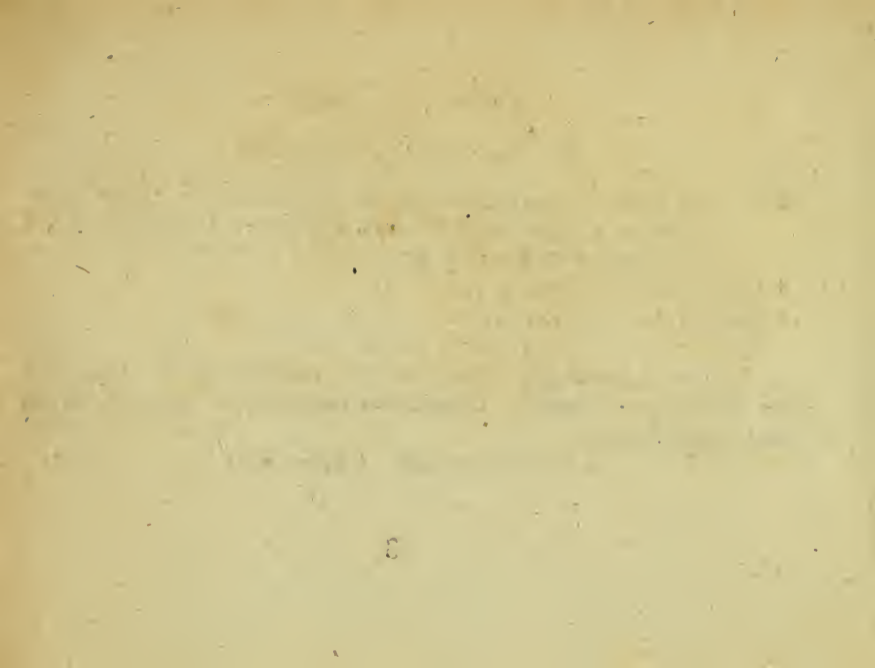
*Paykull* Fn. Suec. T. I. n. 4. p. 78.

*Illiger* Kug. Käf. Pr. I. n. 11. p. 96.

Habitat in arenosis, ficcis.

Variat thorace cuprea Elytra ad marginem lateralem crebrius pilosa. Thorax margine laterali reflexus. Corpus subtus cinereopilosum. Scutellum vix albidum, magis flavescens.

a Magnitudo naturalis. b Eadem aucta.





*Spercheus emarginatus* Fabr.





SPERCHEUS emarginatus.

*Der ausgerandete Beutelkäfer.*

*SPERCHEUS emarginatus.* Fabric. Syst. Eleuth. T. I. n. 1. p. 248.

*HYDROPHILUS emarginatus.* Fabric. Ent. syst. T. I. n. 7. p. 183.

*DTTISCUS emarginatus.* Schaller in Act. soc. nat. scrut. hal. I. p. 327.

*HYDROPHILUS emarginatus.* Illiger Kug. Käf. Pr. F. I. n. 1. p. 242.

*HYDROPHILUS emarginatus.* Herbst. Coleopt. T. VII. n. 21. p. 311. tab. 114.

fig. 6.

Habitat ad radices plantarum aquaticarum.

Nomen genericum potius a *σπαραγών*, *tumeo, distentus sum*, deducendum.

a Magnitudo naturalis. b Eadem aucta. c Antenna aucta.

THE UNIVERSITY OF CHICAGO

DEPARTMENT OF CHEMISTRY

RESEARCH REPORT  
No. 100  
BY  
J. H. GOLDSTEIN  
AND  
R. F. W. WILSON  
1954

RESEARCH REPORT  
No. 100  
BY  
J. H. GOLDSTEIN  
AND  
R. F. W. WILSON  
1954



*Hydrachna gibba* Fabr.



HYDRACHNA gibba.

*Der bucklichte Flusssäfer. Le Ditique spherique Geoffr.*

*HYDRACHNA gibba*: brunnea sericeo nitens. *Fabric.* Syft. Eleuth. T. I. n. 2. p. 256.

*DYTISCUS gibbus.* *Fabric.* Ent. syft. T. I. n. 30. p. 193.

*DYTISCUS ovatus.* *Linn.* Syft. Nat. n. 18. p. 667. ed. XIII. n. 18. p. 1950. *Fa.*  
Suec. n. 2282.

*Geoffr.* Inf. T. I. n. 10. p. 191.

*Illiger* Kug. Käf. Pr. I. n. 31. p. 270. (*loco*: I. 262. II. ut apud *Fabric.*)

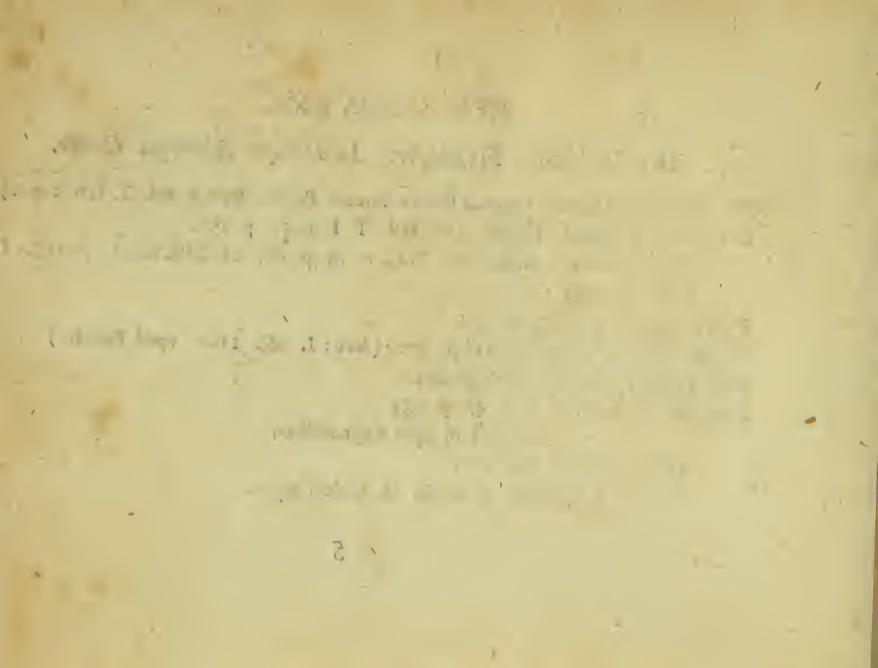
*Rossi* Faun. Etrusc. I. n. 496 p. 234.

*Paykull.* *Fa.* Suec. T. I. n. 47. p. 234.

Habitat in aquis stagnantibus.

Oculi pupillati iride alba.

a Magnitudo naturalis. b Eadem aucta.





*Dytiscus bipunctatus* Fabr.





DYTISCUS bipunctatus.

*Der zweypunktirte Wasserkäfer.*

*DYTISCUS bipunctatus*: ater thorace flavo: punctis duobus nigris, elytris flavis fuscoque variis. *Fabric.* Syft. Eleuth. T. I, n. 31. p. 264. Ent. fyft. T. I. a. 22. p. 192.

*Illiger* Kug. Käf. Pr. I. n. 17. p. 262.

*Rossi* Faun. Etrusc. Mant. I. 415. 167.

Habitat in aquis.

Elytra obsolete striata, atomis plurimis hinc vel inde confluentibus irrorata: ad marginem lateralem utrinque fere in medio, seu ante apicem saepius regio plus vel minus rotundata est, nullis atomis adspersa, quae maculam mentitur, Corpus subtus obscure nigrum nitidum.

a Magnitudo naturalis. b Eadem aucta.

THE UNIVERSITY OF CHICAGO

PHYSICS DEPARTMENT

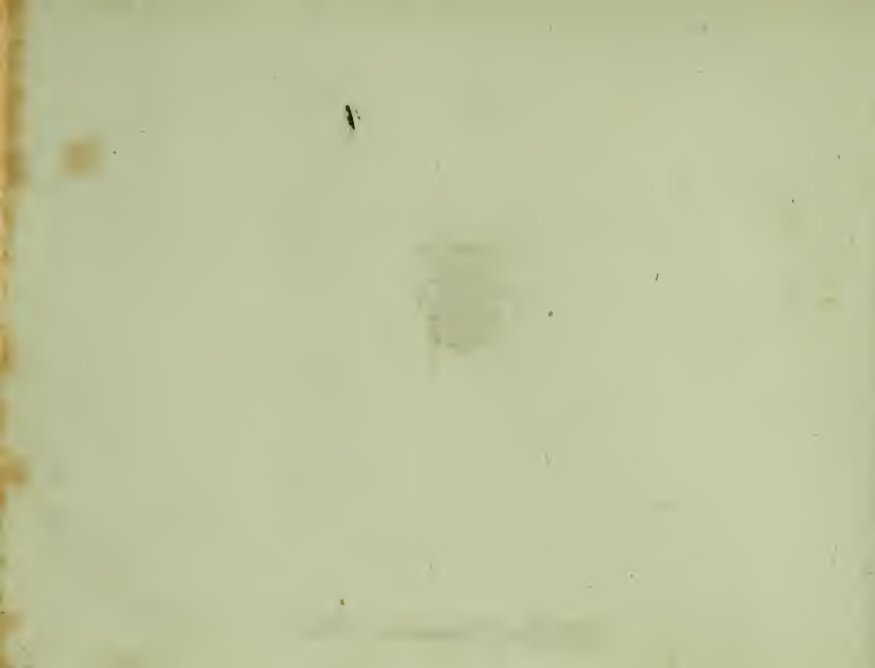
REPORT ON THE PROGRESS OF WORK DURING THE YEAR 1911

BY  
ROBERT A. MILLIKAN

Presented to the Faculty of the University of Chicago  
at the meeting of the Department of Physics,  
held on the 15th day of December, 1911.



*Dytiscus stagnalis* Fabr.



DYTISCUS stagnalis.

*Der Schlamm - Wasserkäfer.*

*DYTISCUS stagnalis*: laevis niger, thorace antice ferrugineo, elytris fuscis flavo lineatis. *Fabric.* Syst. Eleuth. T. I. n. 37. p. 265. Ent. syst. T. I. n. 25. p. 192.

*Illiger* Mag. I. p. 70.

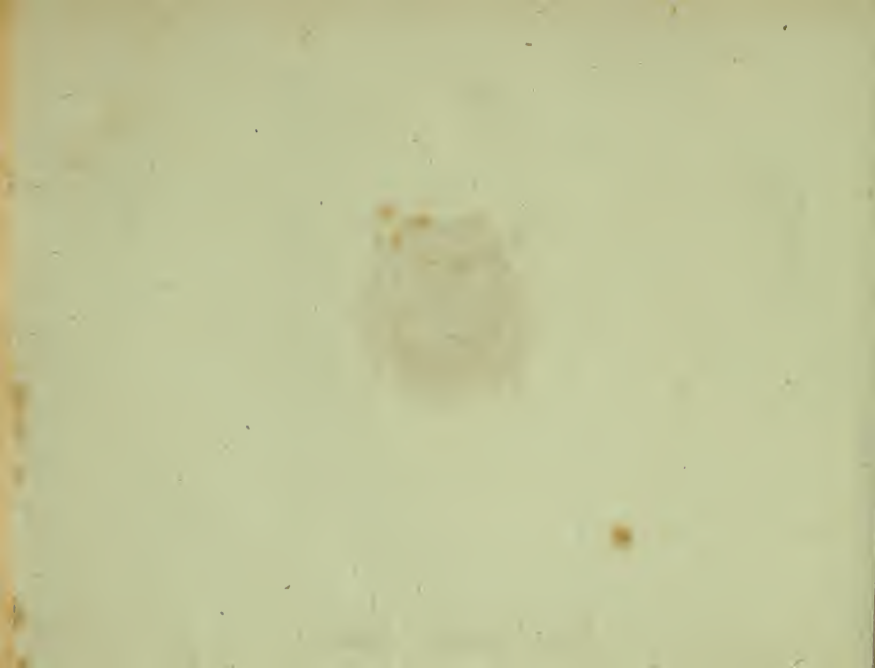
Habitat in aquis.

Non omnis margo lateralis flavescit: inferior seu ad apicem tendens atomis nigris adspersus. Pedes antici flavescentes, reliqui picei.





*Pellis limbata* Fabr.





PELTIS limbata.

*Der dunkelbraune rothgesaumte Schirmkäfer.*

*PELTIS limbata*: capite thorace elytris obscuris: margine rufo. *Fabric.* System.

Eleuth. T. I. n. 4. p. 341.

*CASSIDA limbata.* *Fabric.* Ent. syst. T. I. n. 11. p. 294.

*PELTIS limbata.* *Illig.* Kug. Käf. Pr. I. n. 4. p. 378.

*PELTIS brunnea.* *Payk.* Fn. Suec. I. n. 1. p. 350.

Habitat sub cortice arborum, in boletis arboreis.

a Magnitudo naturalis, b Eadem aucta.





*Crioceris nigricornis* Fabr.



CRIOCERIS nigricornis.

*Der schwarzhornichte Schnurrkäfer.*

*CRIOCERIS nigricornis*: flavescens, capitis basi elytrisque aeneis, antennis nigris.

*Fabric. Syst. Eleuth. T. I. n. 19. p. 453.*

*GALLERUCA nigricornis. Fabric. Ent. syst. T. II. n. 53. p. 24.*

*CRIOCERIS nigricornis. Fabric. Mant. Inf. T. I. n. 13. p. 87.*

*CHRYSOMELA balensis. Linn. Syst. Nat. n. 20. p. 580. ed. XIII. n. 135. p. 1719.*

*Herbst Archiv, VII. n. 15. p. 164. tab. 45. fig. 5.*

Habitat in pratis, graminosis, apricis.

Pectus puncto utrinque impresso non atro sed aeneo.

a Magnitudo naturalis, b Eadem aucta.





*Crioceris adusta* Fabr.





CRIOCERIS adusta.

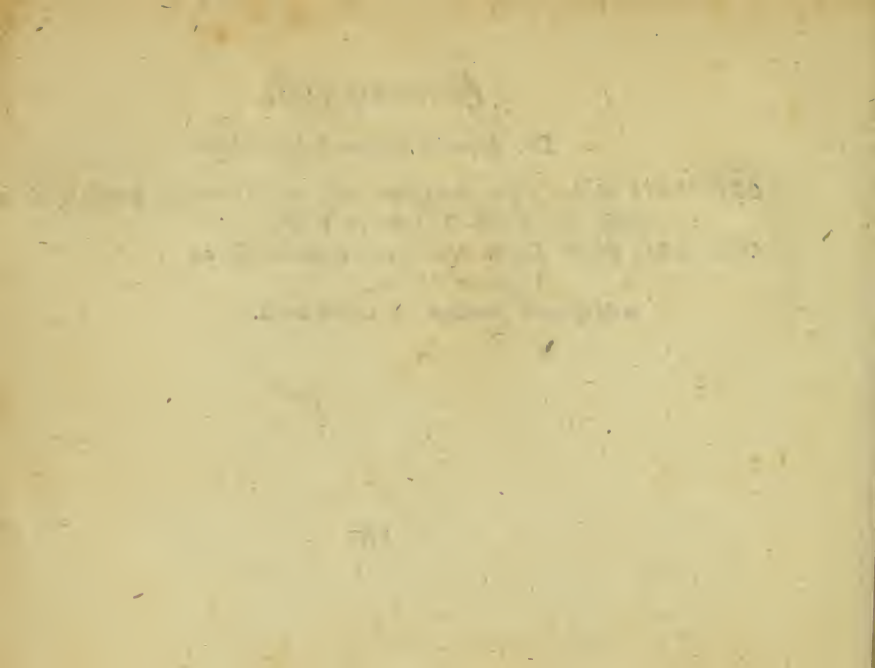
*Der brandfleckichte Schnurrkäfer.*

*CRIOCERIS adusta*: capite thoraceque rufis, elytris testaceis, macula apicis fusca. *Fabric. Syst. Eleuth. T. I. n. 56. p. 461.*

*CRIOCERIS adusta*. *Creutz. Verf. 121. 12. tab. 2. fig. 24.*

Habitat in Austria.

a Magnitudo naturalis, b Eadem aucta.





*Leima quinquepunctata* Fabr.



LEMA quinquepunctata.

*Der fünfpunktirte Zirpkäfer.*

**LEMA quinquepunctata:** nigra thorace rufo, coleoptris flavescentibus: maculis quinque nigris. *Fabric. Syst. Eleuth. T. I. n. 20 p. 475. Enth. syst. Supplem. n. 10. p. 91.*

**CRIOCERIS quinquepunctata.** *Fabric. Ent. syst. T. II. n. 23. p. 7.*

**CHRYSOMELA quinquepunctata.** *Schrank. austr. n. 184.*

Habitat in floribus.

Thorax ante basin puncto dorsali nigro. Coleopterorum futura nigra,  
a Magnitudo naturalis. b Eadem aucta.

1870

THE UNIVERSITY OF CHICAGO

LIBRARY

PHYSICS

1870

11



*Lemna melanopa* Fabr.





LEMA melanopa.

*Der blaugedeckte Zirpkäfer mit schwarzen Fußblättern.*

*LEMA melanopa*: caerulea, thorace pedibusque rufis. *Fabric. Syst. Eleuth. T. I.*  
n. 27. p. 476. *Ent. syst. Suppl. n. 20. p. 93.*

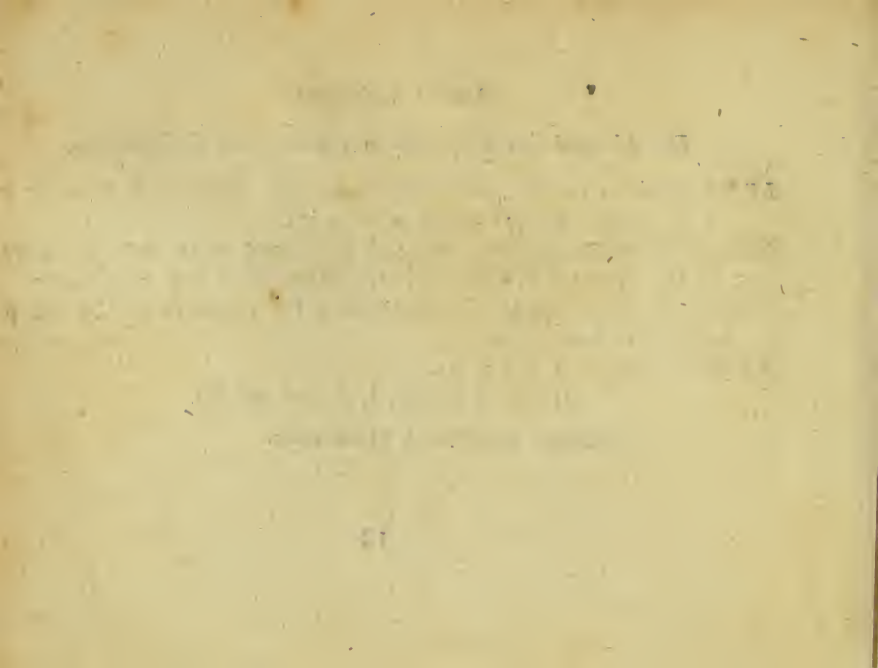
*CRIOCERIS melanopa. Fabric. Ent. syst. T. II. n. 36. p. 10. Syst. Ent. n. 17.*  
p. 121. *Spec. Inf. T. I. n. 31. p. 155. Mant. Inf. T. I. n. 40. p. 89.*

*CHRYSOMELA melanopa. Linn. Syst. Nat. n. 105. p. 601. ed. XIII, n. 162. p.*  
1722. *Fn. Suec. n. 573.*

*Paykull Fn. Suec. T. II. n. 8. p. 82.*

Habitat in dumetis, in floribus umbellis.

a Magnitudo naturalis. b Eadem aucta,





*Allantus filiae Nishi.*



ALLANTUS Tiliae. Feminā.

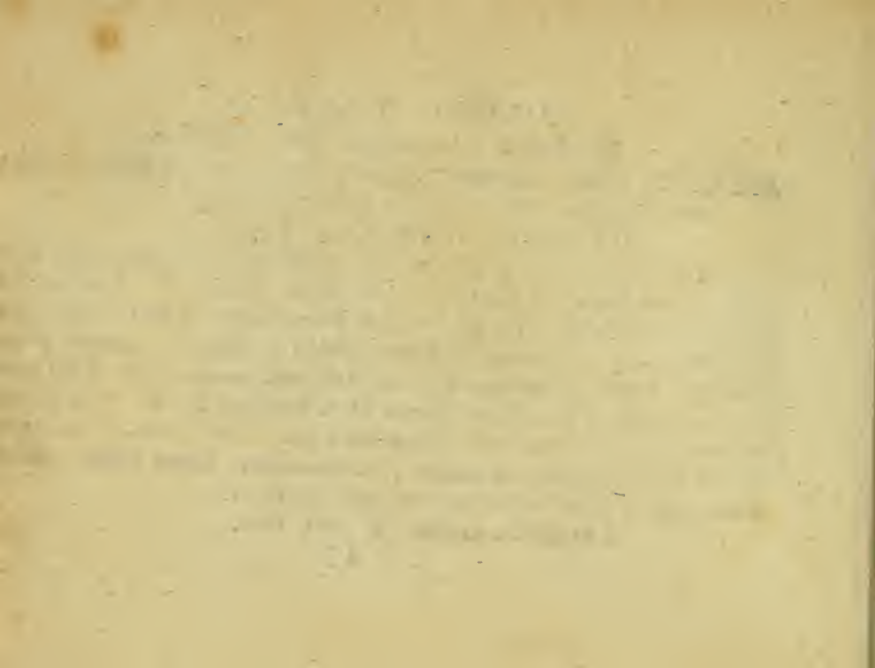
*Die Linden - Bohrwespe. Das Weibchen.*

*ALLANTUS Tiliae*: ferrugineus, thorace maculis duabus, abdominis segmento primo, macularum striga dorsali, torisque posticis nigris.

Legi in dumetis, in Tilia, Corylo, Carpino.

Magnitudo et statura *Allant. viridis*. Caput luteum nitidum, fronte ferruginea, regione stemmatum nigra, mandibulis fuscis. Oculi nigri. Antennae longitudine corporis luteae. Thorax ferrugineo luteus, maculis duabus obliquis nigris. Scutellum luteum. Abdomen cylindricum nitidum ferrugineum, segmento primo, maculisque duabus sub scutello, striga maculari dorsali anoque nigris. Pedes omnes laevi, tarsis posticis solis nigris. Corpus subtus ferrugineo luteum. Alae magnae, corpore longiores hyalinae, vasis stigmatumque flavis. *Mas.* differt corpore mirori, thoracis dorso ferrugineo immaculato, abdominis striga dorsali latiori, tarsisque omnibus flavis: saepius etiam antennae apice nigrescunt.

a Magnitudo naturalis. b Eadem aucta,



.2



*Allantus Rubi Mihi.*





## ALLANTUS Rubi.

### *Die Brombeer - Bohrwespe.*

**ALLANTUS Rubi:** ferrugineo luteus, occipite, thoracis dorso, abdominisque segmento primo nigris.

Legi in sylvaticis inter frutices.

Habitus et magnitudo *Allant. lateral.* Caput luteum: os luteum mandibulis fuscis. Occiput nigrum. Antennae luteae, articulis duobus primis supra nigricantibus. Oculi fuscii. Thorax luteus, dorso nigro, strigis duabus obliquis luteis. Scutellum nigrum macula lutea. Abdomen depresso cylindricum ferrugineo luteum nitidum, segmento primo nigro, secundo tertio luteis maculis dorsalibus nigris, reliquis ferrugineis immaculatis, aut regione obscuriore: ad margines laterales singulorum segmentum stigmatate nigro notatum est. Pedes lutei: tibiae magis flavae: femora supra lineola nigra. Corpus subius luteum. Alae flavo hyalinae, vasis fuscis, margine antico crassiore stigmatateque luteis.

a Magnitudo naturalis. b Eadem aucta.

THE HISTORY

OF THE

REIGN OF

CHARLES

THE SECOND

BY

J. H. BURTON

OF

THE

UNIVERSITY OF

OXFORD

PRINTED

BY

J. H. BURTON

OF

THE

UNIVERSITY OF

OXFORD



*Allantus Roffii Turine.*



*Pieris [illegible]*

ALLANTUS Rossii.

*Der Rossische Bohrkäfer.*

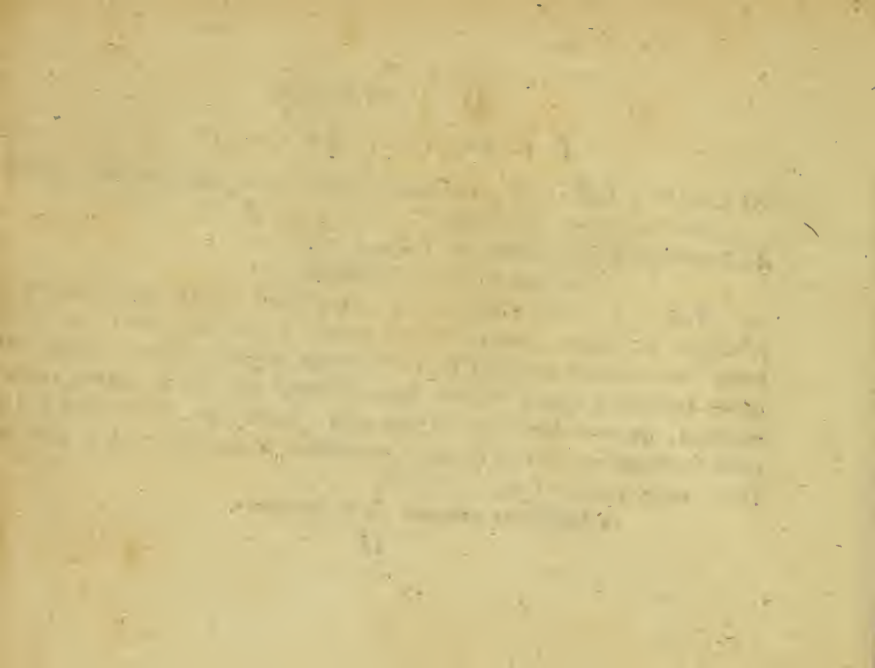
*ALLANTUS Rossii*: ater, abdominis segmento tertio apice quartoque interrupti flavo marginatis, tibiis luteis.

*ALLANTUS Rossii*. *Furine* tab. I. fig. 4.

Habitat in dumetis floribundis.

Habitus et statura *Allant. rustic.* Caput atrum opacum transversum cinereo pubescens. Os nigrum. Antennae breves nigrae. Thorax ater cinereo pubescens, antice lineola angusta interrupta flava. Scutellum parvum punctatum nigrum. Abdomen cylindricum nigrum lucidum, segmento tertio apice taenia angusta continua marginali, quarto eadem taenia est interrupta. Pedes nigri, tibiis omnibus flavis apice nigricantibus. Corpus subtus nigrum nitidum immaculatum. Alae apice late fuscae, margine antico flavo, vasis fuscis.

a Magnitudo naturalis. b Eadem aucta.





*Allantia ferus* Mihi.





ALLANTUS ferus.

*Die gelbpunctirte Bohrwespe. La Mouche à scie noir a pattes et corcelet  
varie des jaune. Geoffr.*

*ALLANTUS ferus*: ater thorace maculato, abdomine segmentis quarto, quinto  
sexto macula utrinque marginali, tibiis anoque supra flavis.

*TENTHREDO fera*: antennis septemnodis atra, thorace abdomine femoribusque  
posticis albo punctatis. *Fabric. Ent. syst. Suppl. p. 217.*

*Geoffr. Inf. T. II. n. 18. p. 280.*

*Coqueb. Illustr. I. 16. tab 3. fig. 7.*

*Scopol. Fl. et Fn. Insub. tab. 22.*

Habitat in dumetis.

Vix omnino *Illustr. Fabricii* adumbratio ad nostram dirigenda mihi equidem  
videtur. Sic differre vidi: macularum color in nostra flavus nec albus. Labium fla-

vum et supra labium, alia macula flava. Abdomen pone medium lineolis tribus nec duabus flavis maculatum. Femorum posteriorum duntaxat basis flavomaculata. Tibiae omnes et femora antica supra lineola flava nec *Coquebertii* figura omnino responder, magis vero *Geoffroyi* descriptio.

a Magnitudo naturalis. b Eadem aucta.



*Allantus quadrimaculatus* Michx.



*[Faint, illegible text or markings at the bottom of the page, possibly a signature or date.]*

**ALLANTUS** quadrimaculatus.

*Die vierfleckichte Bohrwespe.*

**ALLANTUS** *quadrimaculatus*: ater abdomine segmentis tertio quarto quinto sexto utrinque apice lineola marginali alba, pedibus posticis rufis.

**TENTHREDO** *quadrimaculata*: antennis septemnodiiis nigra, pedibus posticis rufis, maculis duabus baseos albis. *Fabric. Ent. syst. T. III, n. 60. p. 120.*

Habitat in pratis, dumetis.

*Mas.* Labium album. Mandibulae macula alba. Maculae abdominis marginales albae minus distinctae: segmentum sextum immaculatum. Femora postica immaculata. Tibiae anticae et mediae supra lineola angusta alba, quae etiam ad Tarsos abit. Tibiae posticae nigrae.

*Femina.* Labium puncto exiguo albo. Mandibulae nigrae basi puncto albo apice ferrugineae, acumine fusco. Maculae abdominis marginales albae admodum distinctae. Femora postica basi macula solitaria alba. Tibiae posticae rufae.

a Magnitudo naturalis. b Eadem aucta.

THE UNIVERSITY OF CHICAGO

PHYSICS DEPARTMENT

LECTURE NOTES

PHYSICS 230

BY

ROBERT A. FAY

AND

ROBERT H. FAY

CHICAGO, ILLINOIS

1963

UNIVERSITY OF CHICAGO PRESS

CHICAGO, ILLINOIS

1963



*Allantus Sambuci* Mihi.



*[Faint, illegible handwritten text]*



ALLANTUS Sambuci.

*Die Flieder - Bohr we spe.*

**ALLANTUS Sambuci:** ater immaculatus, femoribus posticis rufis, pedibus anticis mediis, tarsisque posticis albis.

Legi in *Sambuco nigra* L. inter Aphides.

Habitus et statura *Allant. quadrimacul. Maris* cui valde affinis, sed differre visus. Caput atrum pubescens. Labium album. Palpi antici apice albi. Mandibulae nigrae. Antennae nigrae. Thorax immaculatus ater nitidus leviter pubescens. Scutellum nigrum. Abdomen cylindricum atrum lucidum immaculatum. Pedes antici subtus albi supra lineola nigra: tarsi penitus albi. Femora postica ad iuncturas alba, basi nigra, medio ferruginea apice demum nigra; tibiae posticae nigrae. Tarsi postici basi et apice nigri, medio albi. Alae obscuro hyalinae, vasis et margine crassiori antico nigris.

a Magnitudo naturalis. b Eadem aucta.





*Allantus obscurus* Mich.



ALLANTUS obscurus.

*Die dunkelrostfärbige Bohrwespe.*

**ALLANTUS obscurus:** antennis ante apicem albis, abdomine supra obscure ferrugineo, pedibus rufis, tibiis posticis apice nigris.

Legi in pratis sylvaticis editioribus.

Habitus et statura *Allant. haematopus*. Caput nigrum punctatum leviter pubescens: labio, maculis duabus subantennis, mandibulis palpisque a-bis. Antennae nigrae, apicem versus flavescens, apice ipso albo. Thorax ater immaculatus supra pube tenui vestitus, marginibus cinereo pubescentibus. Scutellum nigrum. Abdomen cylindricum nigrum segmentis dorsalibus margine obscure rufescentibus. Pedes omnes ferruginei, femoribus supra lineola nigra, tibiae posticae dimidiato nigrae: tarsi postici penitus nigri. Corpus subtus laete rufum nitidum, pectore anoque nigris. Alae hyalinae, vasis, stigmate ordinario, margineque crassiori antico fuscis.

a Magnitudo naturalis. b Eadem aucta.





*Sycphus apiformis* Fabi:





SYRPHUS apiarius.

*Die Bienen - Schwebefliege.*

**SYRPHUS apiarius**: antennis plumatis tomentosus thorace antice flavo, abdominis apice albo, alis basi ferrugineis. *Fabric. Ent. syst. T. VI, n. 9. p. 280.*

Habitat in pratis sylvaticis.

Habitus et statura *Syrph. pelluc. F.* Caput nigrum. Frons inter antennis fordide flava. Antennae plumatae obscuro flavae. Thorax antice ( $\frac{3}{4}$ ) rufo tomentosus. Pedes nigri setosi; medii longiores; tibiae posticae incurvae.

*[The text on this page is extremely faint and illegible. It appears to be a list or a series of entries, possibly containing names and dates, but the characters are too light to transcribe accurately.]*



*Syrphus Ramunculi* Mithi.



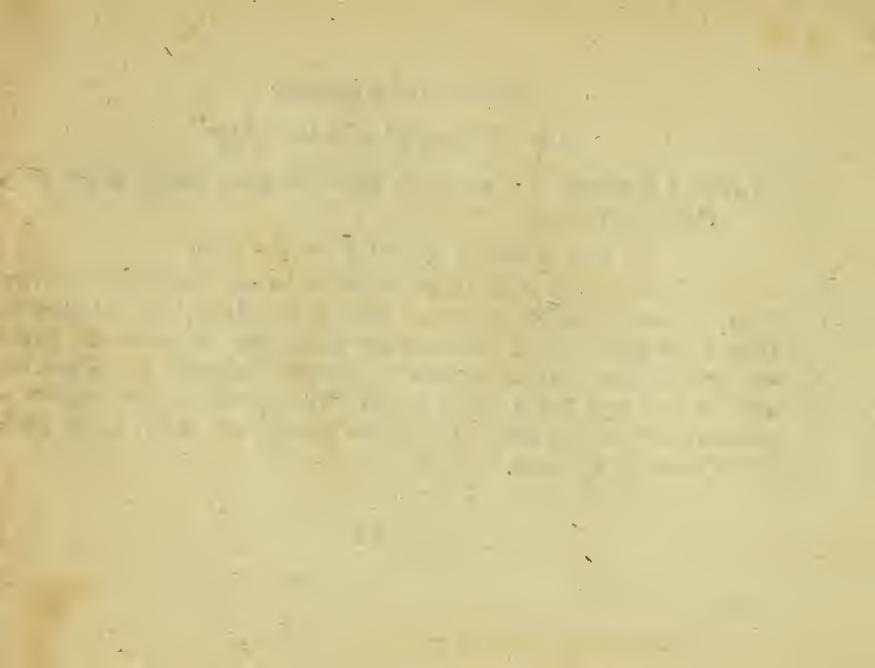
## SYRPHUS Ranunculi.

### *Die Hahnenfuß - Schwebefliege.*

*SYRPHUS Ranunculi*: antennis setariis tomentosus niger, scutello anoque albis, tibiis posticis arcuatis.

Legi in *Ranunculo Ficaria* L. tempore verno.

Maioribus adnumerandus. Caput nigrum vertice rufo setoso: fronte inter antennas argenteo sericea. Os nigrum. Antennae obscuro flavae, clava suborbiculata. Oculi magni fusci. Thorax tomentosus ater immaculatus. Scutellum setis longioribus albis hispidum. Abdomen compresso — ovatum tomentosum nigrum, ano late albo. Femora nigra hirsuta, postica clavata. Tibiae piceae, posticae compresso — arcuatae; tarsis omnibus flavis. Alae obscuro hyalinae, vasis flavis, extimis nigris, macula transversa nigricante.





*Empis pennata* Mihi.



*[Faint, illegible text, possibly a signature or title]*



EMPIS pennata.

*Die gefiedertfüßichte Schnepfenstiege.*

*EMPIS pennata*: atra, thorace cinereo lineato, pedibus posticis quatuor pennatis, rostro nigro.

Legi in Heracleo Spondylio L. tempore *postfoenisecii*.

Habitus et statura *Emp. ciliatae Fab.* ast maior et distinctra. Caput parvum nigrum, fronte inter antennis obscure cinerea, rostro atro. Thorax pilosus ater, lineis cinereis lucidis quatuor dorsalibus, mediis distinctioribus. Abdomen conicum nigrum, basi inprimis cinereo pubescens. Pedes nigri, femoribus tibiisque quatuor posticis utrinque pennatis. Alae obscurae, costa marginali nigricante.

a Magnitudo naturalis. b Eadem aucta. c Pes posticus auctus.

MEMORANDUM

TO : [Illegible]

FROM : [Illegible]

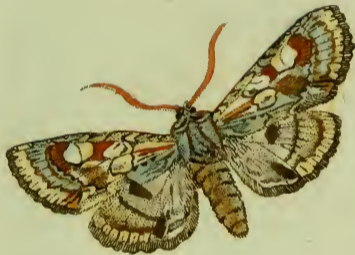
SUBJECT : [Illegible]

[Illegible]

[Illegible]

[Illegible]

[Illegible]



*Noctua bimaculosa* Fabr.



NOCTUA bimaculosa.

*Die Ulmbaumeule. Der Doppelfleck. La Eimaculée.*

*NOCTUA bimaculosa*: cristata alis albido cinerascens: anticis subnebulosis, posticis nigro bimaculatis. *Fabric.* Ent. syst. T. V. n. 197. pag 70. Mant. Inf. T. II. n. 152. p. 157.

*PHALAENA NOCTUA bimaculosa*. *Linn.* Syst. Nat. n. 184. p. 856, ed. XIII. n. 184. p. 2544.

*Syst. Verz. d. W. Schm.* n. 2. p. 70.

*Borckhaus.* eur. Schmett. T. III. n. 57. p. 144.

Die Raupe lebt an den Ulmen. Von ihrer Naturgeschichte ist noch wenig mit Zuverlässigkeit bekannt.

1870

Received of Mr. J. H. ...  
the sum of ...  
for ...  
Dated ...

J. H. ...



*Noctua* <sup>1</sup>*oxyacanthae* Fabr.





NOCTUA Oxyacanthæ.

*Die Weißdorneule. Die Hochschwanzweule. Der Buchfink.  
L'Aubepincere.*

NOCTUA Oxyacanthæ: cristata alis deflexis bimaculatis: margine tenuiori cærescente lunula alba. *Fabric. Ent. syst. T. V. n. 277. p. 93. Syst. Ent. n. 90. p. 611. Spec. Inf. T. II. n. 114. Mant. Inf. T. II. 222. p. 168.*

PHAL. NOCT. Oxyacanthæ. *Linx. Syst. Nat. n. 165. p. 352. ed. XIII. n. 165. p. 2569. Fn. Suec. n. 1207.*

*Syst. Verz. d. W. Schm. n. 3. p. 70.*

*Röjel Inf. Bel. I. p. 185. tab. 33.*

*Borkhaus. eur. Schm. T. III. n. 63. p. 155.*

Die Raupe findet sich auf den Weißdorn, Aepfeln, Pflaumen und Schlehen, und zeigt sich im May und zu Anfang des Junius. Sie sitzt gewöhnlich an den Stämmen. Es ist daher zu vermuthen, daß sie eher die an denselben befindliche Flechten als das Laub frisst. Hr. *Borkhausen* fand sie jedesmahl erwachsen, und nie hat sie noch bey ihm gefressen. Sie geht entweder in die Erde, oder verkriecht sich in Ermanglung derselben unter die ersten ihr vorkommenden Materialien, und macht ein rundes Gespinste. Die Chrysolide ist braungelb. Die Eule entwickelt sich in drey bis vier Wochen. *Borkhausen.*





- Nro. 1 *Carabus picicornis* Fabric.  
— 2 *Carabus filphoides* Fabric.  
— 3 *Carabus binotus* Fabric.  
— 4 *Carabus parumpunctatus* Fabric.  
— 5 *Ichneumon excitator* Scop.  
— 6 *Ichneumon Scurra* Panzer.  
— 7 *Ichneumon Histrio* Fabric.  
— 8 *Bracon guttator* Panzer.  
— 9 *Cimex luridus* Fabric.  
— 10 *Lygaeus sylvestris* Fabric.  
— 11 *Lygaeus quadratus* Fabric.  
— 12 *Lygaeus leucocephalus* Fabric.  
— 13 *Lygaeus saltatorius* Fabric.  
— 14 *Lygaeus pedestris* Panzer.  
— 15 *Capsus gothicus* Fabric.  
— 16 *Capsus flavomaculatus* Fabric.  
— 17 *Coreus hirticornis* Fabric.  
— 18 *Coreus crassicornis* Fabric.  
— 19 *Coreus capitatus* Fabric.  
— 20 *Salda atra* Fabric.  
— 21 *Salda sylvestris* Fabric.  
— 22 *Miris Abietis* Fabric.  
— 23 *Bombyx Cassinia* Maf. Fabric.  
— 24 *Bombyx Cassinia* Fem. Fabric.
-





*Carabus picicornis* Fabr.



*[Faint, illegible handwritten text]*



CARABUS picicornis.

*Der schwarze rothköpfige Laufkäfer mit pechbraunen Fühlhörnern.*

*CARABVS picicornis*: alatus ater, capite antennis pedibusque rufis. *Fabric.*  
Syst. Eleuth. T. I. n. 55. p. 180. Ent. syst. T. I. n. 44. p. 134.

Habitat in editioribus; sub lapidibus.

*Cl. Illiger* Magaz. II. p. 350 hanc Carabi speciem, unam eandemque esse, cum *Carab. erythrocephal. Fabr.* contendit, quod, cum utriusque descriptio conveniat, commode omnino fieri potest.

a Magnitudo naturalis. b Eadem aucta.





*Carabus silphoides* Fabr.



*[Faint, illegible text or signature]*

CARABVS filphoides.

*Der aaskäferartige Laufkäfer.*

*CARABVS filphoides*: alatus depressus ater, thorace orbiculato, elytris striatis punctisque impressis maioribus. *Fabric.* Syst. Eleuth. T. I. n. 109. Ent. syst. T. I. n. 105. p. 148.

*CARABVS punctulatus.* *Fabric.* Ent. syst. T. I. n. 102. p. 152.

*CARABVS filphoides.* *Rossi* Faun. Etrusc. T. I. n. 215. tab. I. fig 7.

Habitat in Austria.

a Magnitudo naturalis. b Eadem aucta.

THE UNIVERSITY OF CHICAGO

PHYSICS DEPARTMENT

REPORT ON THE PROGRESS OF WORK DURING THE YEAR 1900

BY

ROBERT A. MILLIKAN

AND

WALTER W. KILPATRICK

CHICAGO, ILL., 1901



*Carabus binotatus* Fabr.



177. Scarabaeus



CARABVS binotatus.

*Der schwarze Laufkäfer mit zwey rothen Punkten auf der Stirne.*

*CARABVS binotatus*: alatus ater, capite punctis duobus frontalibus rufis, antennis basi flavis. *Fabric*, Syst. Eleuth. T. I. n. 126. p. 193. Ent. syst. T. I. n. 119. p. 151.

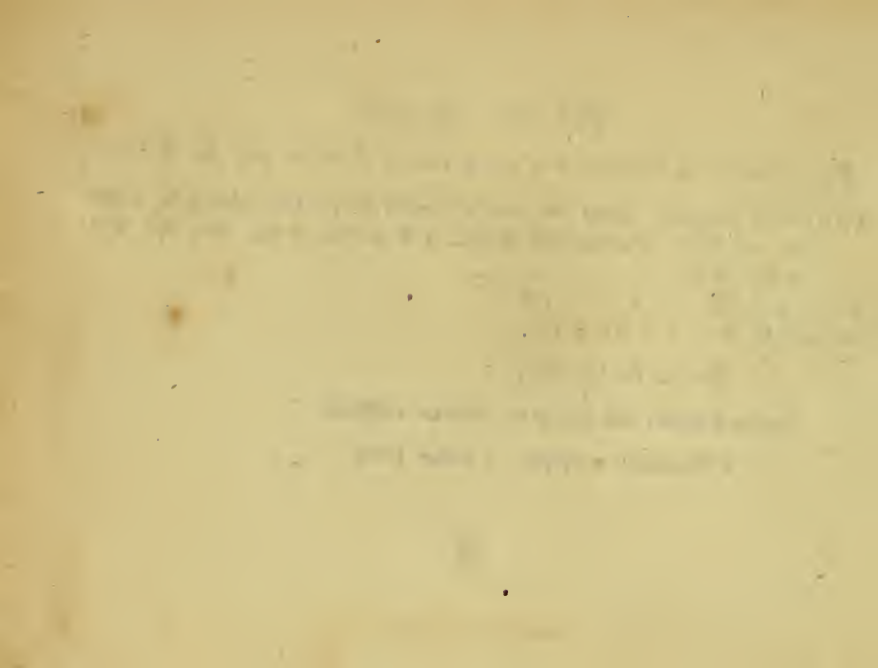
*Müller* Kug. Käf. P. I. n. 37. p. 170.

*Paykull*. Fn. Suec. I. n. 84. p. 165.

Habitat sub lapidibus.

Puncta frontalia rufa saepius in lineolam confluunt.

a Magnitudo naturalis, b Eadem aucta.





*Carabus parumpunctatus* Fabr.



*Carabus (Cicindela) campestris*

CARABVS parumpunctatus.

*Der wenigpunktirte Laufkäfer.*

*CARABVS parumpunctatus*: alatus oblongus supra aeneus, subtus ater elytris striatis: punctis sex impressis, tibiis piceis. *Fabric.* Syft. Eleuth. n. 158. p. 199. Ent. syft. T. I. n. 144. p. 157.

*Illiger* Kug. Käf. Pr. I, n. 74. p. 195.

*CARABVS Mülleri.* *Herbst*: Archiv. V. n. 46. p. 139.

Habitat sub lapidibus.

a Magnitudo naturalis. b Eadem aucta.

THE HISTORY OF THE

REIGN OF KING CHARLES THE FIRST

By JOHN BURNET, BISHOP OF SALISBURY.  
IN TWO VOLUMES.  
LONDON, Printed by J. Sturges, at the Black-Swan in St. Dunstons Church, in the Strand, 1724.



*Ichneumon excitator* Scopol.



*[Faint, illegible handwritten text]*



ICHNEVMON excitator.

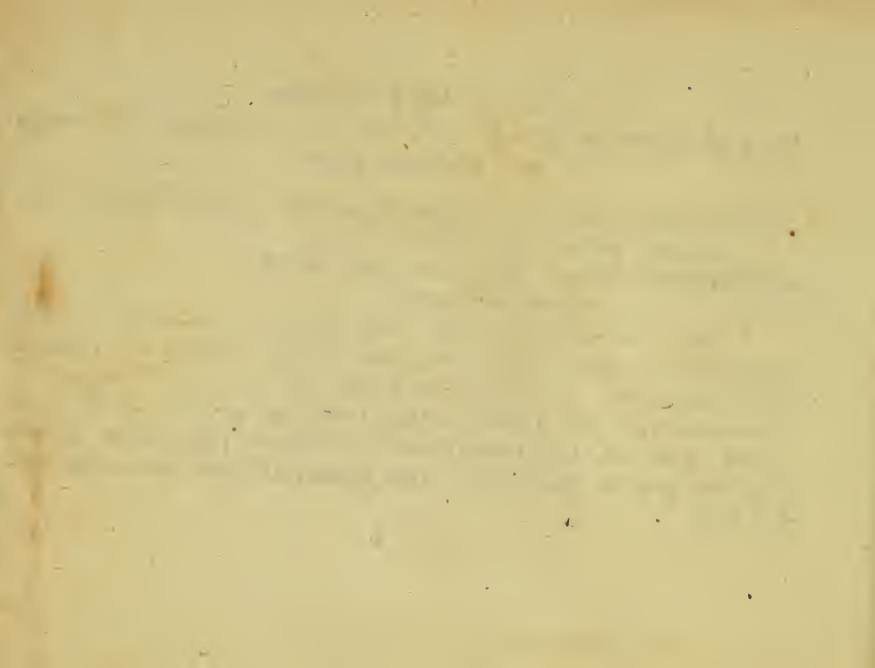
Die große schwarze Schlupfwespe, mit weiß gerandeten Bauchringen  
und schwarzen Füßen.

*ICHNEVMON excitator*: ater thorace immaculato, abdominis segmentis flavo marginatis, pedibus rufis.

*ICHNEVMON excitator*. Scop. carn. n. 743. ic. 743.

Habitat in sylvaticis.

Caput atrum pubescens: maculis duabus frontalibus sub antennis obsoletis, palpisque flavis. Antennae nigrae longitudine corporis. Thorax ater leviter pubescens immaculatus. Scutellum pilosum nigrum. Abdomen atrum cylindricum lucidum leviter pubescens, segmentis margine laterali apiceque flavis, ultimis obsoletioribus. Pedes rufi, tibiis posticis piceis: tarsis mediis et posticis albidis. Aculeus longitudine corporis: valvis pilosis. Alae hyalinae flavicantes, nervo antico crassiori flavo.





*Ichneumon Scurra* Michx.



1848 *Zygoptera* *Libellula*

ICHNEVMON scurra.

*Die größere schwarze Schlupfwespe mit rothem Bruststück und weißgerandeten Bauchringen.*

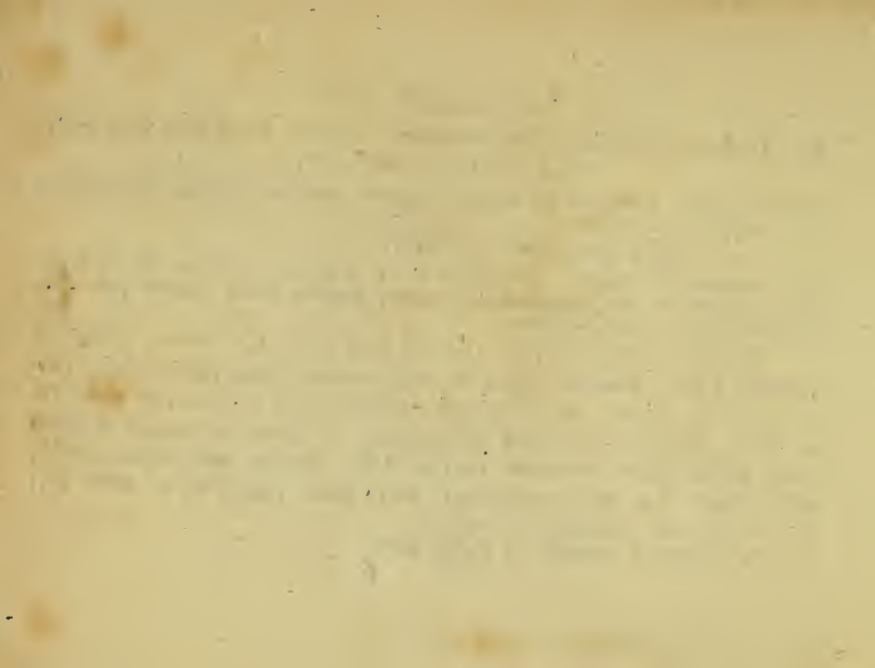
*ICHNEVMON scurra*: niger thorace sanguineo, margine, scutello, abdominisque segmentis apice albis.

Legi in pratis mense Julio 1803.

Sequenti in omnibus adeo similis est, ut plane idem videretur esse, nisi differat magnitudine plus decuplo maiori, colore intensius rubro thoracis pedumque, capite fronteque minus maculata.

Caput atrum pubescens, linea frontali inter oculos et antennas, mandibulis palpisque flavis. Antennae longitudine corporis nigrae subtus parum rufae. Thorax sanguineus nitidus, margine laterali, puncto calloso ante alas, et altero sub alis flavis. Scutellum sanguineum apice flavum. Abdomen cylindricum segmentis parum elevatis nitidis, his apicis margine flavis. Aculeus rufus corpore longior, valvis pilosis. Alae hyalinae punctatae, nervo antico crassiori nigro. Pedes rufi: antici flavescens, tarsi postici nigri.

a Magnitudo naturalis. b Eadem aucta.





*Ichneumon Hystrio* Fabr.



11. *Styrodia* *sp.*



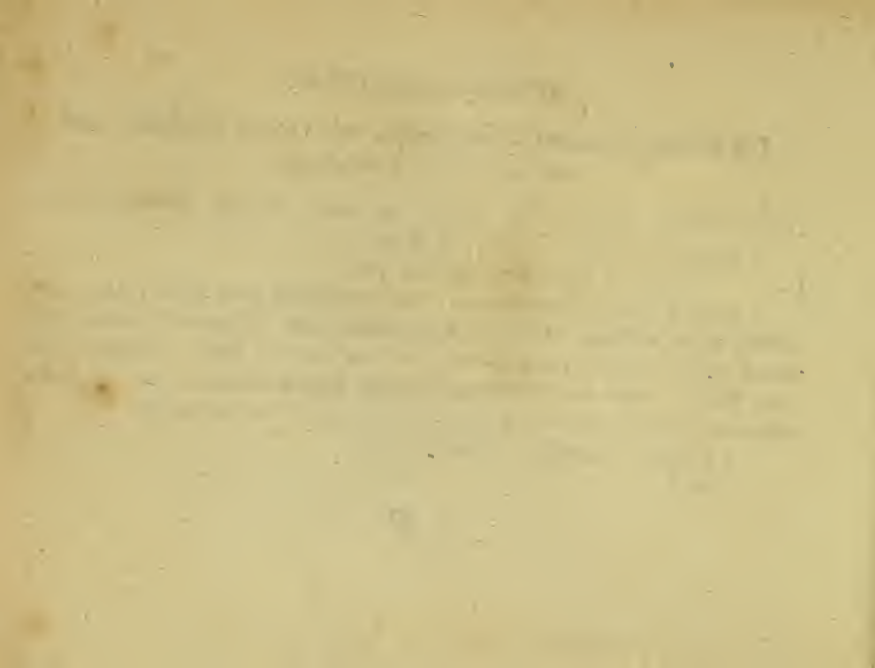
ICHNEVMON Histrio.

*Die kleinere schwarze Schlupfwespe, mit rothem Bruststück und  
weißgerandeten Bauchringen.*

*ICHNEVMON Histrio: niger thorace ferrugineo: margine scutelloque albis.*  
*Fabric, Ent. syst. T. III, n. 202. p. 182.*

Legi in horto mense August. 1803.

Caput nigrum, oculorum orbita, lineola transversa inter oculos, labio mandibulis, palpisque flavis. Antennae nigrae subtus rufae. Thorax rufus, lobo antica laterali nigro: margine puncto sub alis, et alio ante alas flavis. Scutellum rufum apice flavum. Abdomen cylindricum nitidum nigrum segmentis margine flavis. Aculeus corpore longior, valvis pilosis. Pedes rufi: tibiae flavescentes.  
a Magnitudo naturalis. b Eadem aucta.





*Bracon guttator* Mihi.



1811 - 1812 - 1813

BRACON guttator.

*Die schwarze am ersten Bauchringe doppelt rothgefleckte Schlupfwespe.*

*BRACON guttator* : ater thorace immaculato, abdomine ovato compresso, segmento primo utrinque macula triangulari sanguinea.

Habitat in *Carduo nutante* L.

Caput parvum nitidum, linea ante oculos rufescente. Thorax ater immaculatus nitidus parum elevatus. Scutellum nigrum. Abdomen ovatum atrum nitidum, segmento primo scabro, margine laterali utrinque macula triangulari sanguinea. Aculeus exsertus abdomine vix longior. Pedes nigri, tibiis anticis rufis, mediis et posticis rufo annulatis, tarsis omnibus nigris. Alae obscurae nervo antico crassiori fusco.

a Magnitudo naturalis. b Eadem aucta.





*Cimex lectularius* Fabr.



11

11

11



CIMEX luridus.

*Die gelblichtgrüne Baumwanze.*

*CIMEX luridus* : thorace obtuse spinoso subvirescente elytris griseis : macula fusca, clypeo emarginato. *Fabric.* Syft. Ryngot. n. 6. p. 157. Ent. syst. T. VI. n. 57. p. 94.

Habitat in pratis, pomariis.

a Magnitudo naturalis. b Eadem aucta.

1864-1865

1864-1865

1864-1865

1864-1865

1864-1865

1864-1865



*Lygaeus sylvesteris* Fabr.



LYGAEVS sylvestris.

*Die Wald-Schmahlwanze.*

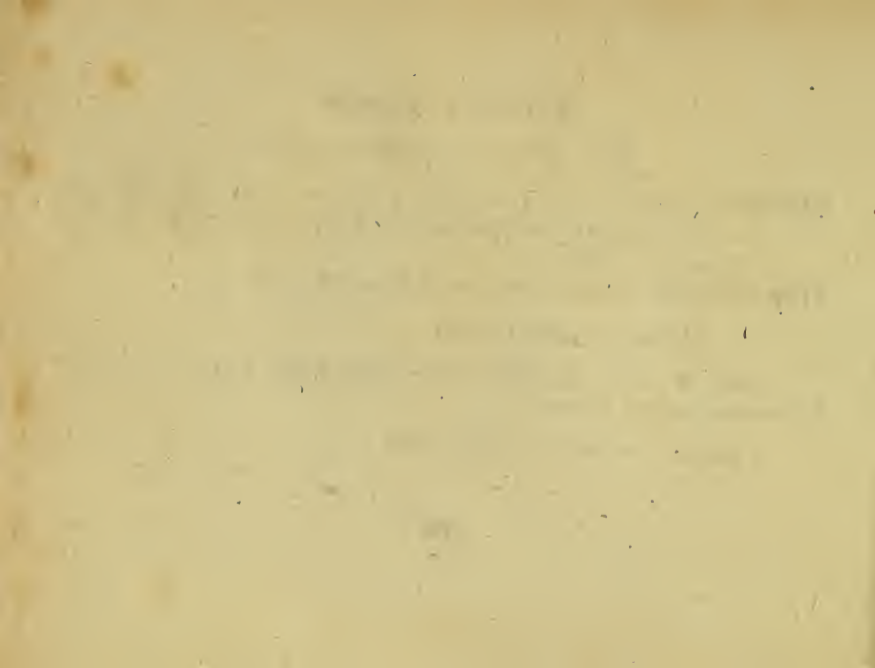
*LYGAEVS sylvestris*: niger elytris fuscis apice nigro punctatis, alis nigris: puncto bascos apicisque albo. *Fabric.* Syst. Ryngot. n. 138. p. 232. Ent. syst. T. VI. n. 108 p. 166.

*CIMEX sylvestris.* *Fabric.* Mant. Inf. T. II. n. 236. p. 302.

Habitat in pratis, sylvaticis.

Pedes in nostris speciminibus nigri, tibiis anticis et posticis folis flavis. Femora antica argute dentata.

a Magnitudo naturalis. b Eadem aucta.





*Lygaeus quadratus* Fabr.



*[Faint, illegible handwritten text]*



LYGAEVS quadratus.

*Die viereckigte Schmahlwanze.*

*LYGAEVS quadratus*: thorace cinereo: macula antica atra, elytris cinereis: macula postica fusca. *Fabric.* Syst. Ryngot. n. 141, p. 232. Ent. syst. Supplem. n. III. p. 541.

*Coqueb.* illustr. iconograph. T. I. p. 37. tab. 9. fig. 12.

Habitat in pratis, in hortis.

Pedes flavescens nigro fasciati. Femora antica dente acuto armata. Scutellum apicis margine, apiceque ipso pallido.

a Magnitudo naturalis. b Eadem aucta.

c

MEMORANDUM FOR THE RECORD

On 10/15/54, the Board of Directors met and discussed the proposed changes in the company's policy regarding the purchase of new equipment. It was noted that the current policy requires that all equipment purchases be approved by the Board.

RECOMMENDATION

It is recommended that the Board approve the proposed changes to the equipment purchase policy. The changes will allow the management to purchase equipment up to a certain value without the need for Board approval, provided that the equipment is necessary for the operation of the business and that the purchase is within the budget.



*Lygaeus leucocephalus* Fabr.



*[Faint, illegible text or markings at the bottom of the page, possibly a signature or date.]*

LYGAEVS leucocephalus.

*Die rothköpfigte Schmahlwanze. La Puneuse Sauteuse.*

*LYGAEVS leucocephalus*: niger capite pedibusque fulvis. *Fabric.* Syst. Ryngot.  
n. 173. p. 237. Ent. syst. T. VI. n. 140. p. 175.

*CIMEX leucocephalus.* *Fabric.* Mant. Inf. T. II. n. 255. p. 304.

*CIMEX leucocephalus.* *Linn.* Syst. Nat. n. 60. p. 723, ed. XIII. n. 60. p. 2169.

Habitat in graminosis udis.

Magnitudo naturalis. b Eadem aucta.





*Lygaeus saltatorius* Fabr.





LYGAEVS saltatorius.

Die hüpfende Schmahlwanze.

*LYGAEVS saltatorius*: niger elytris striatis, alis postice flavo maculatis. *Fabric.*

Syst. Ryngot. n. 184. p. 239. Ent. syst. T. VI. n. 147. p. 176.

*CIMEX saltatorius*. *Fabric.* Mant. Inf. T. II. n. 260. p. 305.

*CIMEX saltatorius*. *Linn.* Syst. Nat. n. 93. p. 729, ed. XIII. n. 93. p. 2176.

Fn. Suec. n. 954.

*Wolff.* Cimic. II. p. 77. n. 74. tab. 8. fig. 74.

Habitat in arenosis udis.

a Magnitudo naturalis. b Eadem aucta.





*Lygaeus pedostris* Nithi.



LYGAEVS pedestris.

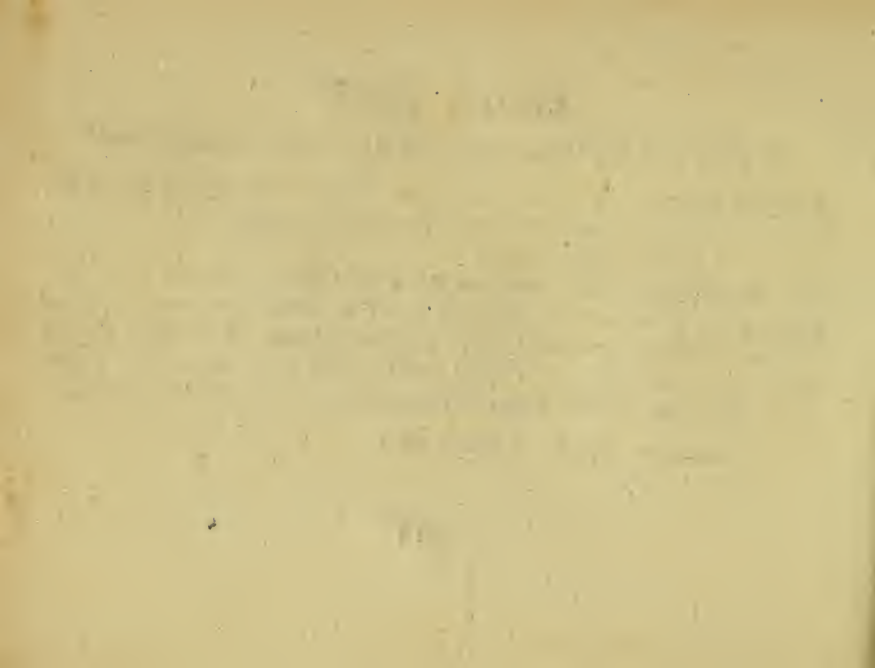
*Die gelb und weiszbunte stachlicht schenklichte Schmahlwanze.*

*LYCAEVS pedestris*: ater albo flavo varius: thorace antice nigro postice flavo, alis fuscis apice puncto albo, femoribus anticis dentatis.

. Legi in campis arenosis.

Caput atrum nigrum. Antennae flavae apice nigrae. Thorax antice ater, postice flavus puncto utrinque marginali nigro: in medio linea attenuata alba ad marginem lateralem excurrente latiori. Scutellum nigrum. Elytra albo flavoque varia, apice demum alba. Alae fuscae, puncto apicis albo. Pedes flavi; femora antica apice nigra, dentibus duobus vel tribus armata. Corpus subtus nigrum nitidum.

a Magnitudo naturalis, b Eadem aucta.





*Capsus gothicus* Fabr.



1871 - 1872



CAPSVS gothicus.

*Die gothische Naschwanze. La Punaise à brocard jaune Geoffr.*

*CAPSVS gothicus*: niger scutello elytrorumque apicibus coccineis. *Fabric. Syst.*  
*Ryngot. n. 20. p. 244.*

*LYGAEVS gothicus. Fabric. Ent. syst. T. VI. n. 162. p. 180.*

*CIMEX gothicus. Fabric. Syst. Ent. n. 147. p. 726. Spec. Inf. T. II. n. 206.*  
*p. 372. Mant. Inf. T. II. n. 271. p. 305.*

*CIMEX gothicus. Linn. Syst. Nat. n. 73. p. 726. ed. XIII. n. 73. p. 2162. Fn.*  
*Succ. n. 966.*

*Geoffr. Inf. T. I. n. 19. p. 445.*

*Wolff Cimic. I. n. 33. p. 33. tab 4. fig. 83.*

Habitat frequens in pratis, hortis, in floribus.

a Magnitudo naturalis. b Eadem aucta.





*Capsus flavomaculatus* Fabr.



CAPSVS flavomaculatus.

*Die gelbgebänderte Naschwanze.*

*CAPSVS flavomaculatus*: niger elytris maculis duabus flavis; posteriore puncto nigro. *Fabric. Syst. Ryngot. n. 30. p. 247.*

*LYGAEVS flavomaculatus. Fabric. Ent. syst. T, VI. n. 169. p. 182.*

Habitat frequens in arbutis.

a Magnitudo naturalis, b Eadem aucta.

THE UNIVERSITY OF CHICAGO  
LIBRARY

THE UNIVERSITY OF CHICAGO  
LIBRARY  
1207 EAST 58TH STREET  
CHICAGO, ILLINOIS 60637  
TEL: 773-936-3000  
WWW.CHICAGO.LIBRARY.EDU

10



*Coreus hirticornis* Fabr.



Faint, illegible text at the bottom of the page, possibly a title or a page number.



COREVS hirticornis.

*Die rauhhornichte Randwanze.*

*COREVS hirticornis*: thorace acute spinoso ferratoque rufescens, antennis hirtis, femoribus posticis ferratis. *Fabric.* Syst. Ryngot. n. 31. p. 198. Ent. syst. T. VI. n. 17. p. 131.

*Coqueb.* illustr. iconogr. T. I. p. 39. tab. 10. fig. 8.

Habitat raro in dumetis tempore verno.

a Magnitudo naturalis. b Eadem aucta.

CHURCH RECORDS

The following is a list of the members of the church

who have been baptized since the last meeting of the church.

NAME OF BAPTIZED PERSON

DATE OF BAPTISM

NAME OF PASTOR

CHURCH OF THE HOLY TRINITY



*Coreus crassicornis* Fabr.



*[Faint, illegible text, possibly a title or description of the illustration.]*

COREVS crassicornis.

*Die dickhornnichte Randwanze.*

*COREVS crassicornis*: griseus nigro punctatus antennis apice crassioribus. *Fabric.* Syft. Ryngot. n. 46. p. 201.

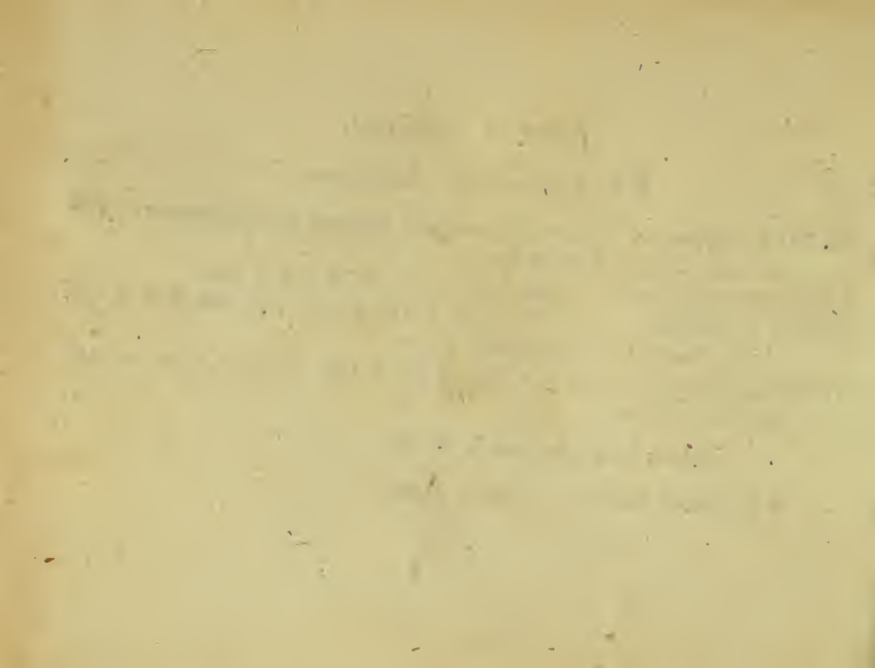
*LYGAEVS crassicornis.* *Fabric.* Ent. syst. T. VI. n. 114. p. 168.

*CIMEX crassicornis.* *Fabric.* Ent. Syst. n. 131. p. 723. *Spec. Inf. T. II. n. 183.*  
p. 369. *Mant. Inf. T. II. n. 239. p. 303.*

*CIMEX crassicornis.* *Linn.* Syft. Nat. n. 92. p. 729. ed. XIII. n. 92. p. 2168.  
*Fn. Suec. n. 952.*

Habitat haud infrequens in floribus.

a Magnitudo naturalis, b Eadem aucta.





*Coreus capitatus* Fabr.



*Scarabaeus*



COREVS capitatus.

*Die röthlichte Randwanze mit an der Spitze dickern Fühlhörnern.*

*COREVS capitatus*: ferrugineus elytris albis nigro punctatis apice ferrugineis, antennis apice crassioribus. *Fabric.* Syft. Ryngot. n. 49. p. 201.

*LYGAEVS capitatus.* *Fabric.* Ent. syft. T. VI. n. 118. p. 169.

*Wolff.* Cimic. II. p. 75. n. 72. tab. 8. fig. 72.

Habitat in hortis, floribus.

a Magnitudo naturalis. b Eadem aucta.

1885

The following is a list of the names of the persons who have been elected to the office of Justice of the Peace for the year 1885.

1. J. H. [Name] 2. [Name] 3. [Name] 4. [Name] 5. [Name]

6. [Name] 7. [Name] 8. [Name] 9. [Name] 10. [Name]

11. [Name] 12. [Name] 13. [Name] 14. [Name] 15. [Name]

16. [Name] 17. [Name] 18. [Name] 19. [Name] 20. [Name]

21. [Name] 22. [Name] 23. [Name] 24. [Name] 25. [Name]

26. [Name] 27. [Name] 28. [Name] 29. [Name] 30. [Name]

31. [Name] 32. [Name] 33. [Name] 34. [Name] 35. [Name]

36. [Name] 37. [Name] 38. [Name] 39. [Name] 40. [Name]

41. [Name] 42. [Name] 43. [Name] 44. [Name] 45. [Name]

46. [Name] 47. [Name] 48. [Name] 49. [Name] 50. [Name]

51. [Name] 52. [Name] 53. [Name] 54. [Name] 55. [Name]

56. [Name] 57. [Name] 58. [Name] 59. [Name] 60. [Name]

61. [Name] 62. [Name] 63. [Name] 64. [Name] 65. [Name]

66. [Name] 67. [Name] 68. [Name] 69. [Name] 70. [Name]

71. [Name] 72. [Name] 73. [Name] 74. [Name] 75. [Name]

76. [Name] 77. [Name] 78. [Name] 79. [Name] 80. [Name]

81. [Name] 82. [Name] 83. [Name] 84. [Name] 85. [Name]

86. [Name] 87. [Name] 88. [Name] 89. [Name] 90. [Name]

91. [Name] 92. [Name] 93. [Name] 94. [Name] 95. [Name]

96. [Name] 97. [Name] 98. [Name] 99. [Name] 100. [Name]



*Salda atra* Fabr.



SALDA atra.

*Die schwarze Zirpen-Wanze.*

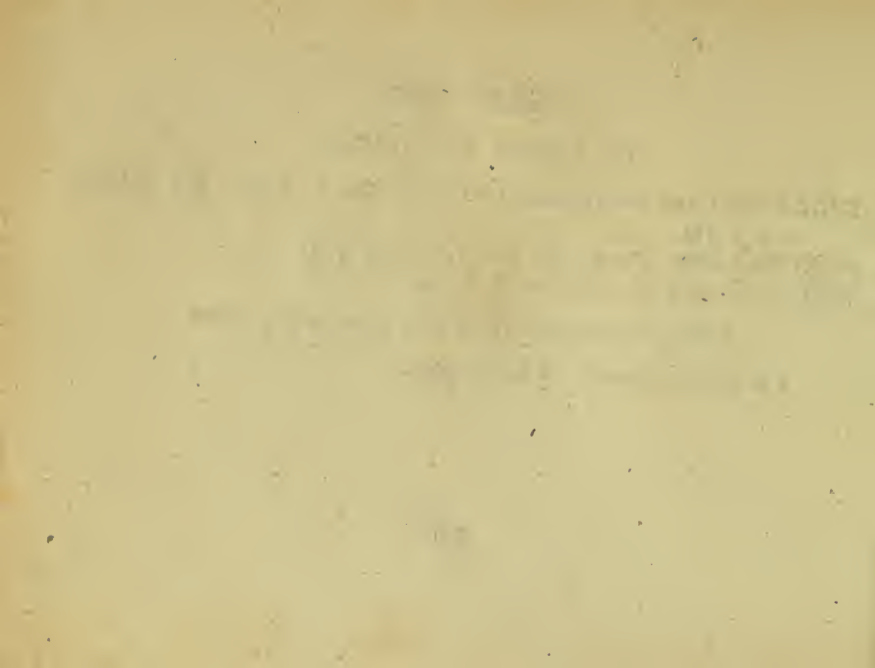
*SALDA atra*: atra nitida thoracis linea dorsali alba. *Fabric.* Syst. Ryngot.  
n. 4. p. 114.

*ACANTHIA atra.* *Fabric.* Ent. syst. T. VI, n. 4. p. 68.

*Wolff.* Cimic. II. n. 40. p. 43. tab. 5. fig. 40.

Habitat ad ripas aquarum, plantas aquaticas frequentans.

a Magnitudo naturalis. b Eadem aucta.





*Salda sylvestris* Fabr.





SALDA fylvestris.

*Die Wald-Zirpen-Wanze.*

*SALDA fylvestris*: atra elytris albis: arcu apicis nigro. *Fabric. Syft. Ryngot.*  
n. 17. p. 116.

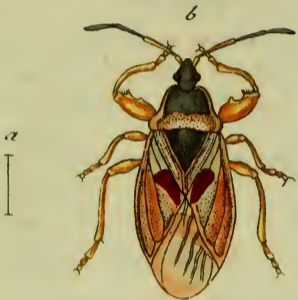
*ACANTHIA fylvestris.* *Fabric. Ent. syft. T. VI. n. 37. p. 76.*

*CIMEX fylvestris.* *Linn. Syft. Nat. n. 111. p. 731. ed. XIII. n. 111. p. 2127.*  
*Fn. Succ. n. 965.*

Habitat in fylvaticis.

a Magnitudo naturalis. b Eadem aucta.





*Miris Abietis* Fabr.



MIRIS Abietis.

*Die Tannen - Langwanze.*

*MIRIS Abietis*: maculato - fulvus pedibus rufis: femoribus crassis dentatis. *Fabric.*

Syft. Ryngot. n. 16. p. 256. Ent. syft. T. VI. n. 15. p. 187.

*CIMEX Abietis.* *Fabric.* Spec. Inf. T. II. n. 222. p. 375. Mant. Inf. T. II.  
n. 290. p. 307.

*CIMEX Abietis.* *Linn.* Syft. Nat. n. 115. p. 732. ed. XIII. n. 115. p. 2189.  
Fn. Suec. n. 969.

*CIMEX grossipes.* *Degeer.* Inf. T. III. n. 37. p. 308. tab. 15. fig. 20. 21.

Habitat in *Pinu Abiete L.*

a Magnitudo naturalis, b Eadem aucta.

1875

...

...



*Bombyx Cassini* Mas Fabr.





## BOMBYX Cassinia Mas.

*Der Graslindenspinner. Die Sphinxphalene. Der Storch.  
Das Männchen.*

*BOMBYX Cassinia*: alis deflexis griseis: lineolis abbreviatis nigris sparsis. *Fabric.* Ent. syst. T. IV. n. 164. p. 460. *Mant. Inf.* T. II. n. 148. p. 126.

*Syst. Verz. d. W. Schm.* n. 1. p. 61.

*Esper* eur. *Schmett.* III. p. 249. tab. 49. fig. 1—3.

*Rösel* *Inf. Bel.* III. p. 239. tab. 40. fig. 1—5.

*Borkhausen* eur. *Schm.* III. n. 169. p. 442.

Die Raupe dieses Spinners findet man im Frühling bis in den Herbst auf Lindenbäumen, Wollweiden und Eichen. Nach *Esper* soll sie sich auch, wiewohl etwas seltner, auf Kirschbäumen und Buchen finden. Wenn sie sich verwandeln will, so begiebt sie sich in die Erde, und wird darin zu einer dunkel-

braunen Chrysalide. Der Spinner entwickelt sich entweder noch im nehmlichen Jahr, im späten Herbst, gemeinlich im October, oder erst im künftigen Frühling, wo man ihn bisweilen an den Stämmen der Bäume, auf welchen die Raupe lebte, sitzend findet.

Weil die Raupe im Ruhestand, den vordern Theil des Körpers in die Höhe richtet, und mit dem Kopf gleichsam die Gestirne anschauet, so wurde sie *lachenille du Cassini* genennt, und von dieser Benennung ist ihr der Name *Cassinia* beygelegt worden. *Borkb.*



*Bombyx Cassinia* Fem. Fabr.



*[Faint, illegible text at the bottom of the page, possibly a signature or title.]*

BOMBYX *Cassinia* Fem.

*Der Graslindenspinner. Die Sphinxphalene. Der Storch.  
Das Weibchen.*

*BOMBYX Cassinia. Fabric. 1. c.*

Lebt und wohnt bey seinem Männchen.

1870

...

...


D

12







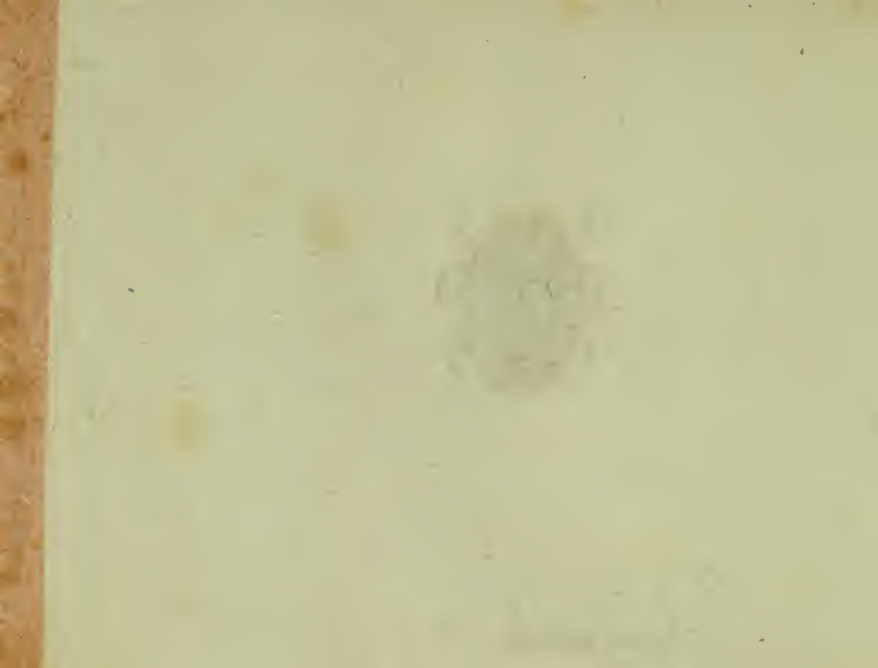
- 
- Nr. 1. *Hister nitidulus* Fabric.  
— 2. *Hister aeneus* Fabric.  
— 3. *Hister minutus* Fabric.  
— 4. *Hister planus* Fabric.  
— 5. *Hister oblongus* Fabric.  
— 6. *Hister picipes* Fabric.  
— 7. *Elater latus* Fabric.  
— 8. *Elater praecustus* Fabric.  
— 9. *Elater balteatus* Fabric.  
— 10. *Elater pilosus* Fabric.  
— 11. *Elater melancholicus* Fabric.  
— 12. *Elater longicollis* Fabric.  
— 13. *Elater striatus* Fabric.  
— 14. *Elater rufipes* Fabric.  
— 15. *Cimex umbrinus* Wolff.  
— 16. *Lygaeus sylvaticus* Mas. Fabric.  
— 17. *Lygaeus striatellus* Fabric.  
— 18. *Lygaeus luteicollis* Wolff.  
— 19. *Lygaeus umbellatarum* Panzer.  
— 20. *Capsus tricolor* Fabric.  
— 21. *Miris laevigatus* Fabric.  
\* — 22. *Miris striatus* Fabric.  
— 23. *Noctua livida* Fabric.  
— 24. *Noctua Tragopogonis* Fabric.

\* Den auf der Kupfertafel stehenden Namen: *Miris striatus* Wolff, bitte ich in *Miris striatus* Fabric. umzuändern. P.





*Hister nitidulus* Fabr.



HISTER nitidulus.

*Der glänzende Stutzkäfer.*

*HISTER nitidulus*: ater nitidus, elytris basi substriatis, thorace antice utrinque impresso *Fabric. Syst. Eleuth. T. 1. n. 7 p. 85.*

*HISTER semistriatus. Herbst Naturg. d. K. T. IV. n. 6. p. 30. tab. 35. fig. 6. F.*

*HISTER semistriatus. Illiger Kug. Käf. Pr. I. n. 12. p. 59.*

*HISTER semistriatus. Entom. Heft I. n. 15. p. 77.*

*HISTER unicolor. Scop. carn. n. 30 ic. 30.*

Habitat in stercore animalium, in cadaveribus.

Magnitudine admodum variat. Elytrorum striae quinque, quarta brevissima. Linea suturalis obsoleta, basi impunctata. Antennarum articuli picei, clava cinerascens. Thorax antice utrinque puncto impresso.

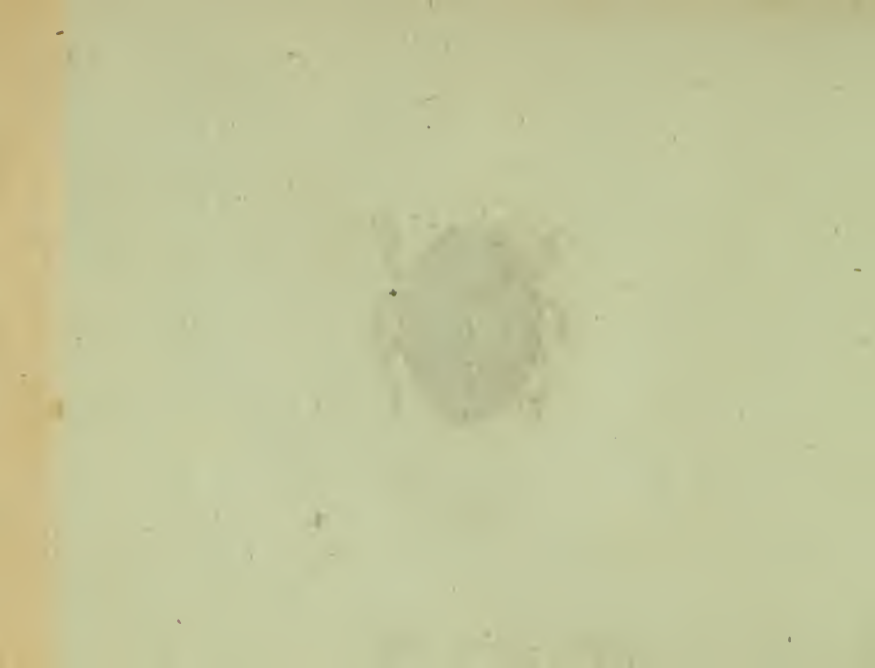
a Magnitudo naturalis. b Eadem aucta.

*Drey und neunzigstes Heft.*





*Hister aeneus* Fabr.





HISTER aeneus.

*Der metallschillernde Stutzkäfer. L'Escarbot bronzé. Geoffr.*

*HISTER aeneus*; aeneus elytris basi striatis apice punctatis, tibiis anticis ferratis.

*Fabric. Syst. Eleuth. T. I. n. 25. p. 88. Ent. Syst. T. I. n. 19. p. 76.*

*Geoffr. Inf. T. I. n. 3. p. 95.*

*HISTER aeneus. Herbst. Naturg. d. Käf. T. IV. n. 5. p. 29. tab. 35. fig. 5.*

*HISTER aeneus. Illiger. Kug. Käf. Pr. I. n. 13. p. 59.*

*HISTER aeneus. Entom. Heft I. n. 16. p. 79.*

Mutabilis colore viridiaeneo, aeneo, obscuro. Femora postica valde clavata.  
Tarsi picei.

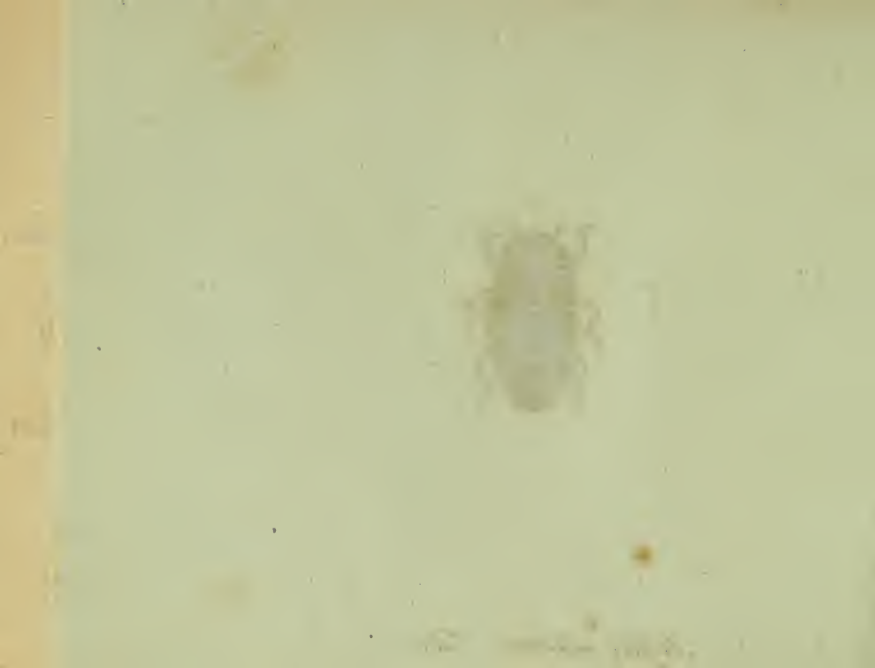
a Magnitudo naturalis. b Eadem aucta.

THE [illegible]

[The following text is extremely faint and illegible due to the quality of the scan. It appears to be a list or a series of entries, possibly containing names and dates.]



*Hister minutus* Fabr.



HISTER minutus.

*Der sehr kleine Stutzkäfer.*

*HISTER minutus*: subrotundus piceus, thorace angustato. *Fabric.* Syst. Eleuth.

T. I. n. 34. p. 90.

*HISTER flavicornis.* *Herbst.* Naturg. d. Käf. IV. n. 13. p. 40. tab. 36. fig. 2. a. b.

*HISTER flavicornis.* *Illiger.* Kugel. Käf. Pr. I. n. 20. p. 62.

*HISTER flavicornis.* *Entom. Heft* n 27. p. 106.

Habitat sub cortice arborum Fagi, Quercus.

Immerito utramque speciem me coniunxisse videri possit, quam maluissem separatam sistere, nisi sub eodemque nomine ab illustr. *Fabricio* accepissem, eiusdemque descriptionem, praeprimis quoad figuram coloremque *piceum* convenire vidissem: haud negabo tamen, quoad magnitudinem elytrorumque sculpturam, vel minimam interesse differentiam inter nostrum, et flavicornem,

a Magnitudo naturalis, b Eadem aucta.

THE HISTORY OF

THE CITY OF BOSTON

FROM THE FIRST SETTLEMENT TO THE PRESENT TIME

BY

JOHN B. BOSTON

IN TWO VOLUMES.

VOLUME I.

BOSTON: PUBLISHED BY J. B. BOSTON, 1850.



*Stifter planus* Fabr.





HISTER planus.

*Der flache Stutzkäfer.*

*HISTER planus*: planus opacus ater, elytris laevissimis. *Fabric.* Syst. Eleuth.

T. I. n. 36 p. 90. Ent. syst. T. I. n. 7. p. 37. Mant. Inf. T. I. n. 5. p. 32.

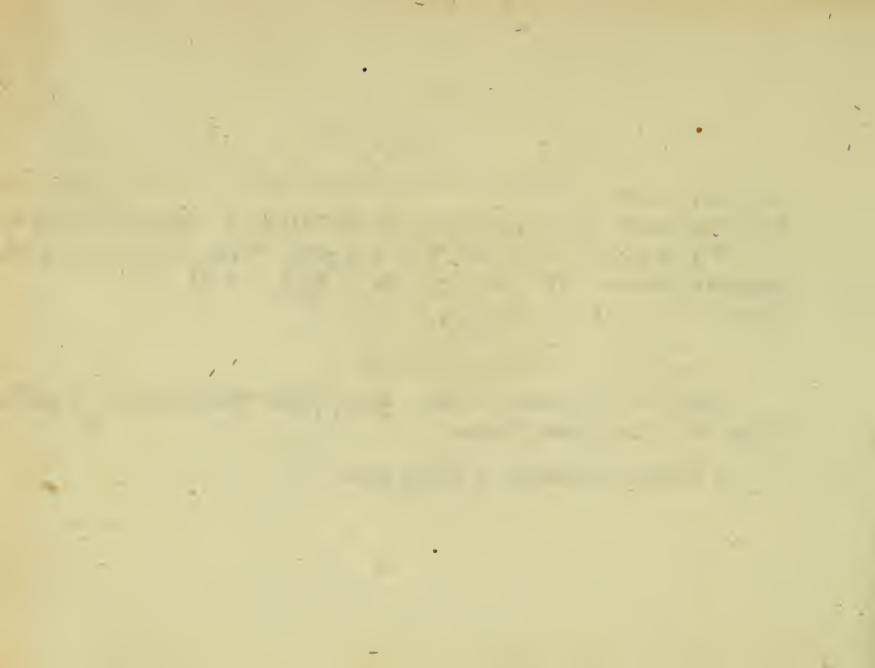
*Herbst* Nat. d. Käf. T. IV. n. 8 p. 33. tab. 35. fig. 8. a. b. H.

*Illiger* Kug. Käf. Pr. I. n. 25. p. 65.

Habitat sub arborum corticibus.

Mandibulae porrectae dentatae. Caput postice utrinque puncto impresso.  
Tibiae anticae inaequaliter dentatae.

a Magnitudo naturalis. b Eadem aucta.





*Hister oblongus* Fabr.



HISTER oblongus.

*Der länglichte Stutzkäfer.*

*HISTER oblongus*: depressus ater nitidus, elytris striatis, corpore oblongo. *Fabric.* Syst. Eleuth. T. I. n. 41. p. 92. Ent. syst. T. I. n. 13. p. 75.

*HISTER oblongus.* *Illiger* Kug. Käf. Pr. I. n. 22. p. 63.

*HISTER oblongus.* *Ent. Hefte* I. n. 24. p. 100.

Habitat sub arborum corticibus.

a Magnitudo naturalis. b Eadem aucta.





*Nister picipes* Fabr.





HISTER picipes.

*Der pechfärbigfüßichte Stutzkäfer.*

*HISTER picipes*: depressus niger, elytris laevissimis, antennis pedibusque piceis.

*Fabric.* Syst. Eleuth. T.I. n. 42. p. 92. Ent. syst. T.I. n. 21. p. 77.

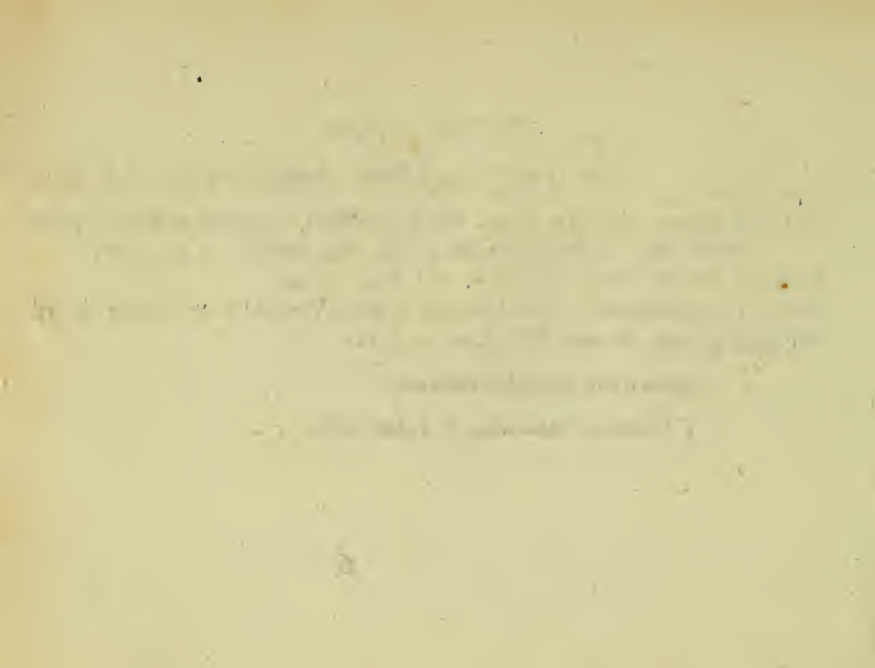
*HISTER picipes.* Illiger Kug. Käf. Pr. I. n. 21. p. 60.

*HISTER parallelipedus.* Herbst Naturg. d. Käf. IV. n. 21. p. 37. tab. 35. fig. IX.

*HISTER picipes.* Entom. Hefte I. n. 26. p. 104.

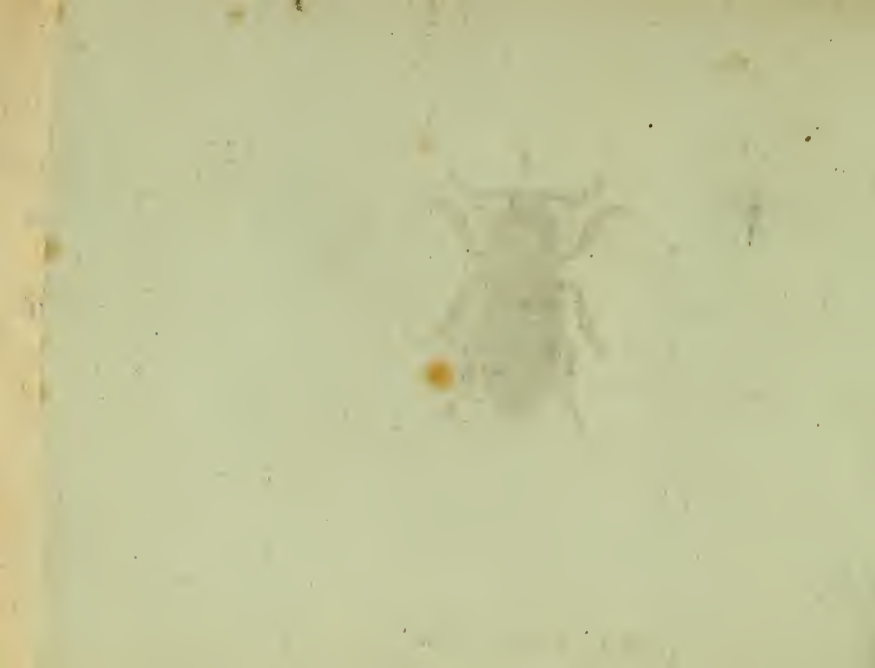
Habitat sub corticibus arborum.

a Magnitudo naturalis, b Eadem aucta.





*Elater latus* Fabr.



ELATER latus.

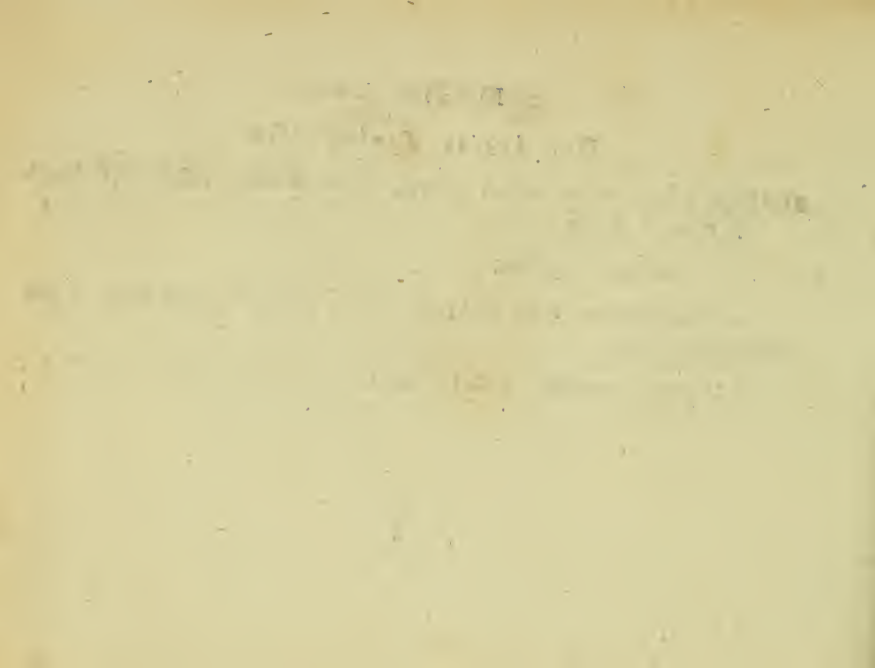
*Der breite Springkäfer.*

*ELATER latus*: ovatus obscure griseus, elytris striatis. *Fabric. Syst. Eleuth.*  
T. II. n. 58. p. 232.

Habitat in Austria.

Antennae nigrae. Pedes fusci, seu obscure picei pilis griseis tecti. Corpus  
subtus magis aeneum.

a Magnitudo naturalis. b Eadem aucta.





*Elater praecustus* Fabr.



1855



ELATER præcustus.

*Der an der Spitze der rothen Flügeldecken schwarze Springkäfer.*

*ELATER præcustus*: ater elytris striatis sanguineis, apice nigris. *Fabric. Syst.*  
*Eleuth. T. II. n. 85. p. 238.*

*ELATER sanguineus*. *Payk. Fn. Suec. T. III. n. 37. β. p. 33.*

Habitat in Pinis putrescentibus.

Vt plurimum multo minor est quam *Elater sanguineus* F. elytra obscuriora.

a Magnitudo naturalis. b Eadem aucta.





*Elater balteatus* Fabr.



ELATER balteatus.

*Der breitgegürtelte Springkäfer. Le Taupin à ceinture.*

*ELATER balteatus*: elytris antice dimidiato rufis, corpore nigro. *Fabric.* Syst. Eleuth. T. II. n. 88. p. 239. Syst. Ent. n. 30. p. 215. Spec. Inf. T. I. n. 36. p. 271. Mant. Inf. T. I. n. 41. p. 174. Ent. syst. T. II. n. 59 p. 229.

*ELATER balteatus.* *Linn.* Syst. Nat. n. 22. p. 654. ed. XIII. n. 22. p. 1906. Fn. Suec. n. 732.

*Voet* Coleopt. I. tab. 43. fig. 10.

*Schäffer* Ic. Inf. Ratisb. tab. 77. fig. 2.

*Panzer* nomenclat. der Schäff. Inf. p. 92. n. 2.

Habitat in sylvis caeduis.

a Magnitudo naturalis. b Eadem aucta.

*Drey und neunzigstes Heft.*

PLATE 1

The following is a list of the specimens in this plate.

- 1. *...*
- 2. *...*
- 3. *...*
- 4. *...*
- 5. *...*
- 6. *...*
- 7. *...*
- 8. *...*
- 9. *...*
- 10. *...*
- 11. *...*
- 12. *...*
- 13. *...*
- 14. *...*
- 15. *...*
- 16. *...*
- 17. *...*
- 18. *...*
- 19. *...*
- 20. *...*
- 21. *...*
- 22. *...*
- 23. *...*
- 24. *...*
- 25. *...*
- 26. *...*
- 27. *...*
- 28. *...*
- 29. *...*
- 30. *...*
- 31. *...*
- 32. *...*
- 33. *...*
- 34. *...*
- 35. *...*
- 36. *...*
- 37. *...*
- 38. *...*
- 39. *...*
- 40. *...*
- 41. *...*
- 42. *...*
- 43. *...*
- 44. *...*
- 45. *...*
- 46. *...*
- 47. *...*
- 48. *...*
- 49. *...*
- 50. *...*



*Elater pilosus* Fabr.





ELATER pilosus.

*Der haarichte Springkäfer.*

*ELATER pilosus*: fuscus cinereo-subvillosus, elytris striatis. *Fabric.* Syft. Eleuth.  
T. II. n. 99. p. 241. Ent. syst. T. II. n. 66. p. 231. Mant. Inf. T. I. n. 45.  
p. 174.

*ELATER pilosus.* *Leske* Reif. 1 Th. p. 11. 1. tab. A. fig. 1.

*Paykull.* Fn. Suec. T. III. n. 29. p. 25.

Habitat in hortis, dumetis.

THE HISTORY OF THE

REIGN OF KING CHARLES THE FIRST

BY JOHN BURNET

IN TWO VOLUMES

LONDON



*Elater melancholicus* Fabr.



ELATER melancholicus.

*Der düsterfarbichte metallglänzende Springkäfer.*

*ELATER melancholicus*: ater elytris striatis, obscure aeneis. *Fabric.* Ent. Syst.  
Supplem. p. 139.

*ELATER melancholicus.* *Paykull* Fn. Suec. T. III. n. 20. p. 17.

I.egi cum *Elat. aeneo Fabric.* uno eodemque loco in dumeti Corylo.

a Magnitudo naturalis, b Eadem aucta.

Faint, illegible text, possibly bleed-through from the reverse side of the page. The text is too light to transcribe accurately.



*Elater longicollis* Fabr.





ELATER longicollis.

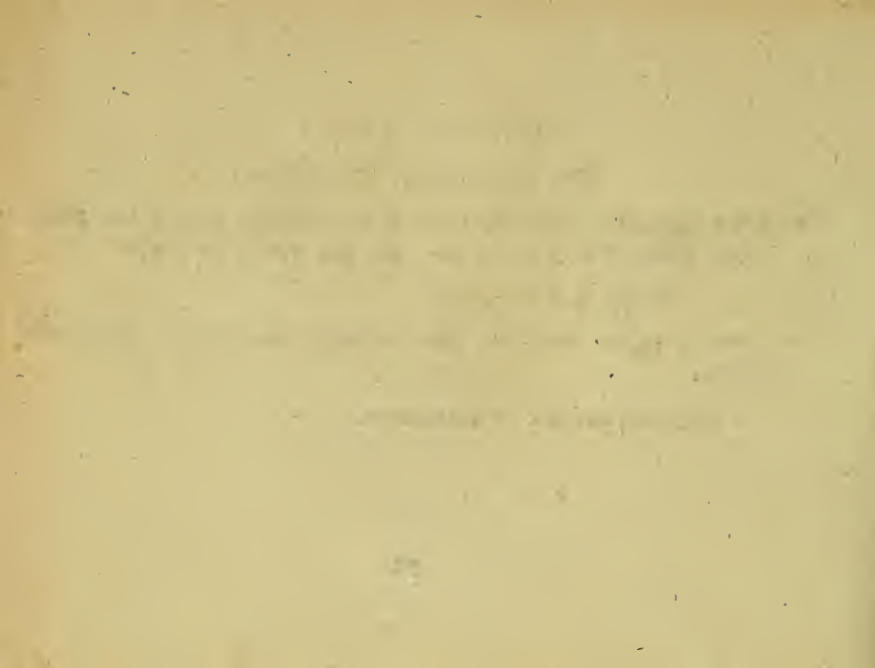
*Der langhalsichte Springkäfer.*

*ELATER longicollis* : tomentosus livens, thorace elytrisque obscurioribus. *Fabric.*  
Syst. Eleuth. T. II. n. 101. p. 241. Ent. syst. T. II. n. 67 p. 231.

Habitat in floribus, hortis.

Thorax in meis speciminibus elytris obscurior, cum rufedine: elytra potius  
flavescentia.

a Magnitudo naturalis. b Eadem aucta.





*Elater striatus* Fabr.



ELATER striatus.

*Der gestreifte Springkäfer.*

*ELATER striatus*: niger elytris fascis. *Fabric.* Syft. Eleuth. T. II. n. 103. p. 241.

Ent. syst. T. II. n. 69. p. 231. Syft. Ent. n. 32. p. 215. Spec. Inf. T. I.  
n. 40. p. 272. Mant. Inf. T. I. n. 47. p. 174.

*Physkul* Fn Suec. T. III. n. 31. p. 27.

*Elater secalis.* Act. holmenf. 1774. T. IV. p. 254. fig. 1—3.

Habitat in agris, in radicibus segetis,

a Magnitudo naturalis. b Eadem aucta.

1870

Received of the Treasurer of the  
Board of Directors of the  
City of New York  
the sum of \$1000.00  
for the purchase of  
land for the  
City of New York  
at the rate of  
\$1000.00 per acre  
for the purchase of  
land for the  
City of New York  
at the rate of  
\$1000.00 per acre



*Elater rufipes* Fabr.





ELATER rufipes.

*Der rothfüßichte Springkäfer. Le Taupin noir à pattes fauves. Geoffr.*

*ELATER rufipes*: ater thorace nitido, elytris striatis, pedibus fuscis. *Fabric.*

Syst. Eleuth. T. II. n. 105. p. 242. Ent. syst. T. II. n. 70. p. 231.

*Paykull* Fn. Suec. T. III. n. 45. p. 39.

*Geoffr.* Inf. T. I. n. 14. p. 136.

Habitat in dumetis.

Magnitudo naturalis. b Eadem aucta.

1870

Received of the Hon. Secy of the Navy  
the sum of \$1000.00  
for the purchase of the  
U.S.S. Albatross  
at New York  
this 1st day of July 1870

1870



*Cinex umbrinus* Wolff.



CIMEX umbrinus.

*Die umberfärbige Wanze.*

*CIMEX umbrinus*: fusco griseus, scutello apice puncto utrinque marginali albo.

Legi in plantis umbelliferis.

Statura et magnitudo *Cimic. ornati* F. Corpus totum fusco griseum, seu obscuro testaceum. Clypeus porrectus punctatus apice rotundatus. Oculi nigri. Antennae apice nigrae. Thorax transversus punctatus margine antico exciso, postico recto. Scutellum obtusum apice puncto utrinque albo. Elytra scutello breviora obtusa punctata, Abdomen margine laterali nigro maculato. Pedes grisei punctati.

a Magnitudo naturalis. b Eadem aucta.

1870

1870

1870

1870

1870

1870

1870

1870

1870

1870

1870



*Lygaeus sylvaticus* Mas Fabi:





LYGAEVS Sylvaticus Mas.

*Die Forst-Schmahlwanze. Das Männchen.*

*LYGAEVS sylvaticus*: ater elytris fuscis. *Fabric.* Syst. Ryngotor. n. 126. p. 229.  
Syst. Ent. n. 125. p. 722. *Spec. Inf. T. II.* n. 174. p. 367. *Mant. Inf. T. II.*  
n. 228. p. 302. *Ent. syst. T. VI.* n. 98. p. 163.

Habitat in sylvaticis acerosis.

Thorax antice niger, maculis in ipsa nigredine obscurioribus: postice elytris  
concolor, maculis tribus posticis marginalibus nigris. Scutellum nigrum. Elytra  
punctata.

a Magnitudo naturalis. b Eadem aucta.

1870

...

...

...

...

...

...

...



*Lygaeus striatellus* Fabr.



LYGAEVS striatellus.

*Die buntgestrichelte Schmahlwanze.*

**LYGAEVS striatellus:** vireseens, thorace punctis quatuor strigaque postica atris. elytris striatis: puncto apicis albo. *Fabric. Syst. Ryngot. n. 164. p. 236*  
*Ent. syst. T. VI. n. 133. p. 173.*

Habitat in floribus, pratis, hortis.

Color *virescens* in vivo animali tantum observabilis.

a Magnitudo naturalis. b Eadem aucta.

THE UNIVERSITY OF CHICAGO

DEPARTMENT OF CHEMISTRY

RESEARCH REPORT NO. 100

BY J. H. GOLDSTEIN AND R. M. MAYER

1957

CHICAGO, ILLINOIS

UNIVERSITY OF CHICAGO PRESS

CHICAGO, ILLINOIS

UNIVERSITY OF CHICAGO PRESS



*Lygaeus luteicollis* Wolff.



*Handwritten text, likely a species name or classification, is visible at the bottom of the page but is extremely faint and illegible.*



LYGAEVS luteicollis.

*Die gelbhalsichte Schwahlwanze.*

*LYGAEVS luteicollis*: niger capite thoraceque flavis, antennis pedibusque luteis.

Legi in floribus.

Parvus. Caput flavum deflexum nitidum apice acuminatum. Oculi nigri. Antennae pallidiores seu lutei. Thorax flavus nitidus. Elytra nigra nitida. Alae fuscae. Corpus atrum. Pedes lutescentes.

a Magnitudo naturalis. b Eadem aucta.





*Lygaeus umbellatarum* Miki.



*Strophodonta longirostris*

LYGAEVS umbellatarum.

*Die Dolden - Schmahlwanze.*

*LYGAEVS umbellatarum*: virescens, capite thorace rubro luteoque variis, scutello flavo immaculato.

Habitat frequens in umbelliferis, tempore autumnali.

Caput flavum nitidum apice acuminatum punctis rubris irroratum. Oculi nigri. Antennae basi flavae apice nigricantes. Thorax nitidus virescens apice fascia marginali interrupta rubra. Scutellum flavum nitidum triangulare flavum. Elytra virescentia, rubro luteoque varia, punctata, apice pallidiora, apice ipso fusco. Pedes virescentes punctis plurimis rubris irrorata. Corpus subtus virescens.

a Magnitudo naturalis. b Eadem aucta.





*Capsus tricolor* Fabr.





CAPSVS tricolor.

*Die dreyfarbigte Naschwanze.*

*CAPSVS tricolor* : ater elytris macula coccinea. *Fabric. Syst. Ryngotor. n. 27.*  
p. 246.

*LYGAEVS tricolor.* *Fabric. Ent. Syst. T. VI. n. 167. p. 181.*

*CIMEX tricolor.* *Fabric. Mant. Inf. T. II. n. 272. p. 306.*

*Wolff. Cimic. I. tab. IV. fig. 35. a. b.*

Habitat in *Vrtica dioica Linn.*

Variat non solum capite tibiisque rufis, sed etiam thoracis antico, elytris-  
que margine laterali rufis. Pedes antennarumque apices pallidi.

a Magnitudo naturalis. b Eadem aucta.

THE HISTORY OF THE

REIGN OF

CHARLES THE FIRST

BY

JOHN BURNET

OF

THE UNIVERSITY OF OXFORD

IN TWO VOLUMES

VOLUME THE SECOND

1704



*Miris laevigatus* Fabri



MIRIS laevigatus.

*Die geglättete Langwanze.*

*MIRIS laevigatus*: exalbidus: lateribus albis. *Fabric.* Syft. Ryngot. n. 2. p. 253.  
Ent. Syft. T. VI. n. 2. p. 184.

*Cimex laevigatus.* *Fabric.* Syft. Ent. n. 148. p. 726. Spec. Inf. T. II. n. 208.  
p. 372. Mant. Inf. T. II. n. 276. p. 306.

*CIMEX laevigatus.* *Linn.* Syft. Nat. n. 101. p. 730. ed. XIII, n. 101. p. 2189.  
Fn. Suec. n. 958.

*Wolff* Cimic. I. n. 36. tab. 4. fig. 36. a. b.

Habitat in pratis.

a Magnitudo naturalis, b Eadem aucta,

THE UNIVERSITY OF CHICAGO

Main body of faint, illegible text, possibly a list or abstracts.



*Lygaeus striatus* Wolff.



*[Faint, illegible text, possibly a title or description of the drawing.]*



MIRIS striatus.

*Die gestreifte Langwanze, La Punaise rayée de jaune et noir. Geoffr.*

*MIRIS striatus*: niger elytris flavo fuscoque striatis apice pedibusque rufis. *Fabric. Syst. Ryngot. n. 15. p. 255. Ent. syst. T. VI. n. 14. p. 186.*

*CIMEX striatus. Fabric. Syst. Ent. n. 153. p. 727. Spec. Inf. T. II. n. 217. p. 374. Mant. Inf. T. II. n. 288. p. 307.*

*CIMEX striatus. Linn. Syst. Nat. n. 105. p. 730. ed. XIII. n. 105. p. 2190. Fn. Suec. n. 960.*

*Geoffr. Inf. T. I. n. 38. p. 454.*

*Wolff Cimic. I. n. 37. tab. 4. fig. 37.*

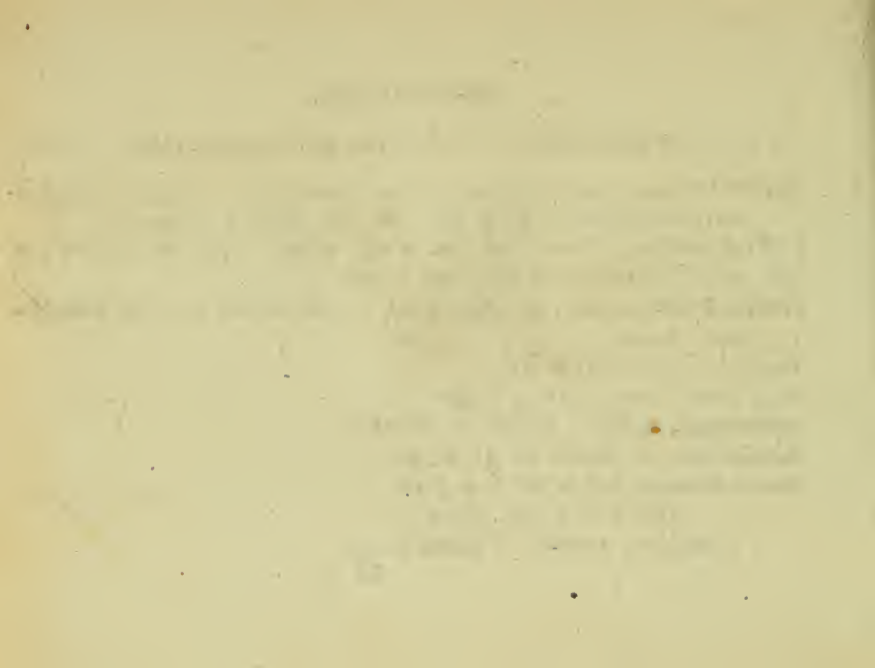
*Sulzer abgek. Gesch. d. Inf. tab. 10. fig. 15.*

*Schäffer Icon. Inf. Ratisb. tab. 13. fig. 4.*

*Panzer Nomencl. d. Sch. Inf. n. 4. p. 19.*

Habitat in Corylo, Ulmo.

a Magnitudo naturalis. b Eadem aucta.





*Noctua livida* Fabr.



Chloris ...

NOCTVA livida.

*Die griechenblaue Eule. Die Röhrchenkrauteule.*

*NOCTVA livida*: laevis alis incumbentibus atris nitidulis: posticis ferrugineis: margine fusco. *Fabric.* Ent. Syst. T. V. n. 42. p. 21. Mant. Inf. T. II. n. 32. p. 138.

*Syst. Verz. d. IV. Schm.* n. 13. p. 85.

*Hybners* Beytr. III. Th. I. B. tab. 4. fig. Z.

*Papillons d'Europe* tab. 233. n. 337. g. h.

*Borkhausen* eur. Schm. IV. n. 324. p. 726.

Es findet sich diese Eule in der Wiener Gegend. Nach dem Wiener Verzeichnisse lebt sie an dem *Röhrchenkraute* (*Leontodon Taraxacum* Linn.) Nach *Fabricius* ist sie nach beyden Enden verdünnt, nakt, gelbgrünlich und roth scheidend, hat eine dunkle Rückenlinie, eine schmale bleiche gefleckte Seitenlinie, und einen bleichern Kopf. *Borkh.*

General Principles

The first principle is that the law is a system of rules...

Secondly, the law is a system of rules that is created by the state...

Thirdly, the law is a system of rules that is applied by the courts...

Fourthly, the law is a system of rules that is subject to change...



*Noctua Tragopoginis Fabr.*

1851



1851



NOCTVA Tragopogonis.

*Die Bocksbartseule. Der Einsiedler. La Phalene grisette à tete jaune.  
La Triponctuée.*

*NOCTVA Tragopogonis*: cristata alis deflexis: anticis fuscis; punctis tribus approximatatis, posticis lividis. *Fabric.* Ent. Syst. T. V. n. 336. p. 112. *System.* Entom. n. 107. p. 615. *Spec. Inf.* T. II. n. 133. p. 237. *Mant. Inf.* T. II. n. 270. p. 177.

*PHAL. NOCTVA Tragopogonis.* *Linn.* Syst. Nat. n. 177. p. 855. ed. XIII. n. 177. p. 2573. *Fn. Suec.* n. 1189.

*Syst. Verz. d. W. Schm.* n. 14. p. 85.

*Degeer* Inf. T. II. P. I. p. 418. tab. 7. fig. 15.

*Papill. d'Europe* tab. 234. n. 338.

*Borkhaus.* eur. Schm. IV. n. 326. p. 729.

Die Raupe dieser Eule findet man im May und Junius an verschiedenen Pflanzen, am Bocksbart, Spinat, Feldscharte, Rittersporn, und an mehrern Arten des Ampfers. Herr Pfarrer *Scriba* nährte sie auch mit Zwetschenlaub. Zur Verwandlung baut sie sich ein Gespinnst, welches sie mit allerley Materialien verdichtet. Die Chrysalide ist bräunlich. Die Eule entwickelt sich in drey bis vier Wochen. Sie fliegt oft bey Tage und fangt auf verschiednen Blumen. *Borkhaus.*





- Nro. 1. *Bolitophagus Goedeni* Schneider.  
— 2. *Cucuius depressus* Fabric.  
— 3. *Cucuius muticus* Fabric.  
— 4. *Clytus semipunctatus* Fabric.  
— 5. *Clytus detritus* Fabric.  
— 6. *Attelabus caeruleocephalus* Fabric.  
— 7. *Attelabus cuprirostris* Fabric.  
— 8. *Ips bipustulata* Fabric.  
— 9. *Diaperis bicolor* Fabric.  
— 10. *Andrena Barbareae* Panzer.  
— 11. *Andrena cornuta* Fabric.  
— 12. *Bremus collaris* Panzer.  
— 13. *Ichneumon exhortator* Fabric.  
— 14. *Ichneumon areator* Panzer.  
— 15. *Anomalon cruentatus* Panzer.  
— 16. *Ephemera vulgata* Fabric.  
— 17. *Ephemera bioculata* Fabric.  
— 18. *Phryganea grandis* Fabric.  
— 19. *Pfocus longicornis* Fabric.  
— 20. *Pfocus fasciatus* Fabric.  
— 21. *Pfocus bipunctatus* Fabric.  
— 22. *Pfocus quadripunctatus* Fabric.  
— 23. *Hepiolus lupulinus* Mas. Fabric.  
— 24. *Hepiolus lupulinus* Fem. Fabric.





*Bolitophagus Goedoni* Schneider.





## BOLITOPHAGVS Goedeni.

### *Der Goedensche Pilzkäfer.*

*Bolitophagus Goedeni*: thorace inaequali, margine crenulato: elytris punctato striatis interiectis punctis elevatis longitudinalibus.

Habitat Rügenwaldae in Pomerania. Cl. *Schneider* communicavit.

Habitus et statura *Bolit. crenat. Fab.* sed triplo minor. Caput opacum nigrum punctis plurimis elevatis scabrum, transversum, margine antico subrotundato integro parum reflexo, lineolisque duabus obsoletis abbreviatis antice et postice impressum. Oculi nigri. Palpi ferruginei, basi obscuriores. Thorax transversus opacus niger, marginibus lateralibus rotundatis crenatis, angulo antico porrecto, postico acuto, disco punctis plurimis elevatis, tuberculisque aliquot scaber. Scutellum minutum semiovatum. Elytra atra opaca immarginata punctato-striata, interiectis punctis elevatis longitudinalibus sexduplici serie. Pedes nigri, Tarsi ferruginei. Corpus subtus nigrum opacum nudum.

*Vier und neunzigstes Heft.*

Dn. *Goedenus* historiae naturalis alias scrutator eximius, hanc speciem Rügenwaldae in Pomerania primus detexit, in cuius honorem ex merito eam Cl. *Schneiderus* nomine suo insignivit.

a Magnitudo naturalis. b Eadem aucta. c Elytron lente auctum.



*Cucuius depressus* Fabr.



CVCVIVS depreffus.

*Der fcharlachrothe Rindenkäfer.*

*Cucuius depreffus*: thorace denticulato elytris rufis, pedibus simplicibus nigris.

*Fabric.* Syft. Eleuth. T. II. n. 4. p. 93. Syft. Ent. n. 1. p. 204. Spec. Inf.

T. I. n. 1. p. 257. Mant. Inf. T. I. n. 1. p. 165. Ent. fyft. T. II. n. 1. p. 93.

*Cantharis fanguinolenta.* *Linn.* Syft. Nat. n. 19. p. 646. ed. XIII. n. 8. p. 1889.

*Herbst* im Archiv II. p. 4. n. 1. tab. 1. fig. 1 — 4.

*Friſch* Inſekt. XIII. c. 24. tab. 7. fig. 1.

*Paykull* Fn. Succ. T. II. n. 1. p. 165.

Habitat ſub arborum corticibus.

a Magnitudo naturalis. b Eadem aucta.





*Cucuius muticus* Fabr.





CVCVIVS muticus.

*Der kleine schwarze Rindenkäfer mit ungezahnem Bruststück.*

*Cucuius muticus*: thorace mutico nigro, puncto utrinque impresso, elytris striatis fuscis. *Fabric. Syst. Eleuth. T. II. n. 13. p. 94. Ent. syst. T. II. n. 12. p. 96.*

*Paykull Fn. Suec. T. II. n. 6. p. 169.*

Habitat sub corticibus arborum.

Puncta thoracis interdum defunt.

a Magnitudo naturalis. b Eadem aucta.





*Clytus semipunctatus* Fabr.



CLYTVS femipunctatus.

*Der halbpunktirte schwarze Widderkäfer mit weißen Mondflecken.*

*Clytus femipunctatus*: thorace globofo nigro punctis tribus albis, elytris nigris, punctis duobus lunulisque tribus albis. *Fabric. Syft. Eleuth. T. II. n. 5. p. 346.*  
*Ent. Syft. Supplem. n. 62. p. 151.*

Habitat in Austria. *Dn. Megerle.*

Orbita oculorum alba. Thorax medio lineola abbreviata, punctisque duobus lateralibus albis. Elytra truncata.





*Clytus detritus* Fabr.





CLYTVS detritus.

*Der abgenutzte Widderkäfer. La Lepture noire à etuis gris tachés de jaune. Geoffr.*

*Clytus detritus*: thorace flavo fasciato, elytris nigris, fasciis quinque flavis, pedibus ferrugineis. *Fabric. Syst. Eleuth. T. II n. 21. p. 350.*

*Callidium detritum. Fabric. Syst. Ent. n. 31. p. 194. Spec. Inf. T. I. n. 40. p. 243. Mant. Inf. T. I. n. 55. p. 156.*

*Leptura detrita. Linn. Syst. Nat. n. 20. p. 646. ed. XIII. n. 284. p. 1854. Fn. Suec n. 694.*

*Geoffr. Inf. T. I. n. 13. p. 216.*

*Voet. Coleopt. T. IV. n. X. p. 8. tab. 26. fig. X.*

*Schaeffer Ic. Inf. Ratisb. tab. 38. fig. 9.*

*Panzer Nomenclat. der Schaeffer. Inf. n. 9. p. 55.*

Habitat in Quercu cariota,





*Attelabus caeruleocephalus* Fabr.



ATTELABVS caeruleocephalus.

*Der blauköpfigte Afterrüsselkäfer.*

*Attelabus caeruleocephalus*: violaceus nitens, thorace elytrisque (rufis) testaceis.

*Fabric.* Syst. Eleuth. T. II. n. 34. p. 423. Ent. system, T. II. n. 21. p. 389.

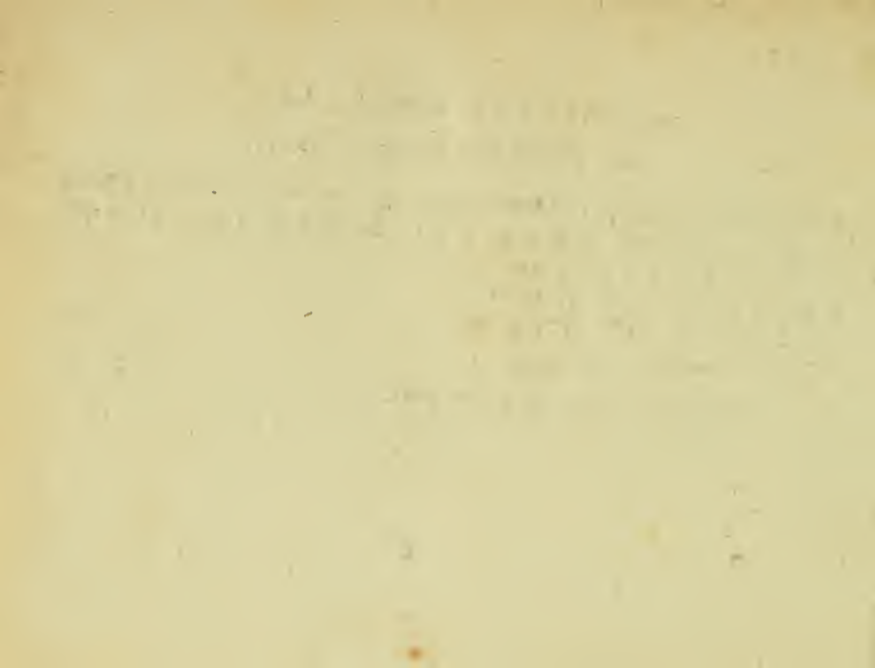
*Mant. Inf.* T. I. n. 33. p. 199.

*Herbst* im Archiv. V. tab 24. fig. 11.

*Act. soc. Hal. nat. curios.* T. I. p. 282.

Habitat in Crataego.

a Magnitudo naturalis. b Eadem aucta.





*Attelabus cuprirostris* Fabi:





ATTELABVS cuprirostris.

*Der rothrüsslichte Afterrüsselkäfer.*

*Attelabus cuprirostris*: viridi aeneus, elytris striatis, rostro cupreo. *Fabric. Syst. Eleuth. T. II. n. 41. p. 424. Ent. syst. T. II. n. 25. p. 389. Mant. Inf. T. II. n. 43. p. 100.*

Habitat in Corylo, Betula.

*Rhinomacer totus viridi sericeus Geoffr.* Inf. I. n. 2, p. 270, huc vel minus referendus est, hinc studio omisi.

a Magnitudo naturalis, b Eadem aucta.

THE HISTORY OF THE

REIGN OF KING CHARLES THE FIRST

BY JOHN BURNET

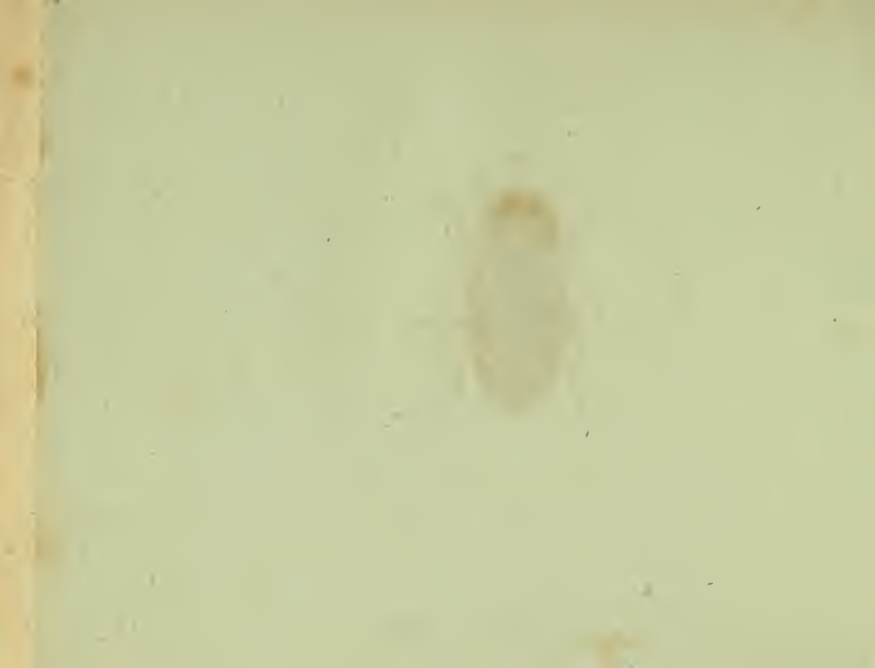
IN TWO VOLUMES

VOLUME THE SECOND

LONDON: Printed and Sold by J. BARNARD, at the Crown and Anchor in St. Dunstons Church-yard, 1724.



*Ips bipustulata* Fabr.



IPS bipustulata.

*Der zweyblatterigte Rindennager.*

*Ips bipustulata*: atra, elytris macula basæos rufa. *Fabric.* Syst. Eleuth. T. II.  
n. 8. p. 578. Ent. syst. T. II. n. 4. p. 511.

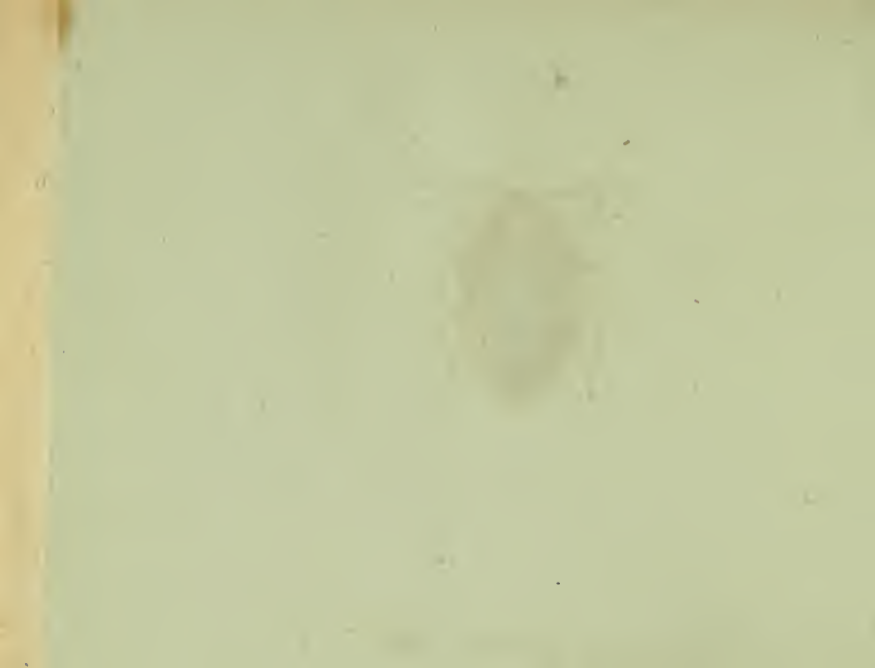
Habitat sub corticibus arborum.

a Magnitudo naturalis. b Eadem aucta.





*Diaperis bicolor* Fabr.





DIAPERIS bicolor.

*Der zweyfarbigte Herzkäfer.*

*Diaperis bicolor*: atra nitida, capite thoraceque obscure rufis. *Fabric.* Syst. Eleuth.  
T. II. n. 6. p. 588. Ent. syst. Suppl. n. 4. p. 174.

*Paykull* Fn. Suec. T. III. n. 3. p. 359.

Habitat in boletis putrescentibus.

Illustr. *Fabric.* a Cl. *Paykull* l. c. seductus *Scolytum aeneum* Fn. Inf. 8. 2.  
huc quidem allegat, sed melius ille ad *Diap. aeneam* referendus est.

a Magnitudo naturalis. b Eadem aucta.

THE UNIVERSITY OF CHICAGO

PHYSICS DEPARTMENT

RECEIVED AT THE UNIVERSITY OF CHICAGO  
LIBRARY ON FEBRUARY 10, 1954  
BY THE PHYSICS DEPARTMENT

PHYSICS DEPARTMENT

RECEIVED AT THE UNIVERSITY OF CHICAGO  
LIBRARY ON FEBRUARY 10, 1954  
BY THE PHYSICS DEPARTMENT

PHYSICS DEPARTMENT

PHYSICS DEPARTMENT



*Andrena Barbareae Miki.*



*[Faint, illegible handwritten text]*

## ANDRENA Barbareae.

*Die Barbenkraut · Waldbiene.*

*Andrena Barbareae*: atra hirta, thoracae cinerascens fascia nigra, abdomine nitido apice hirsuto, alis apice cyaneis.

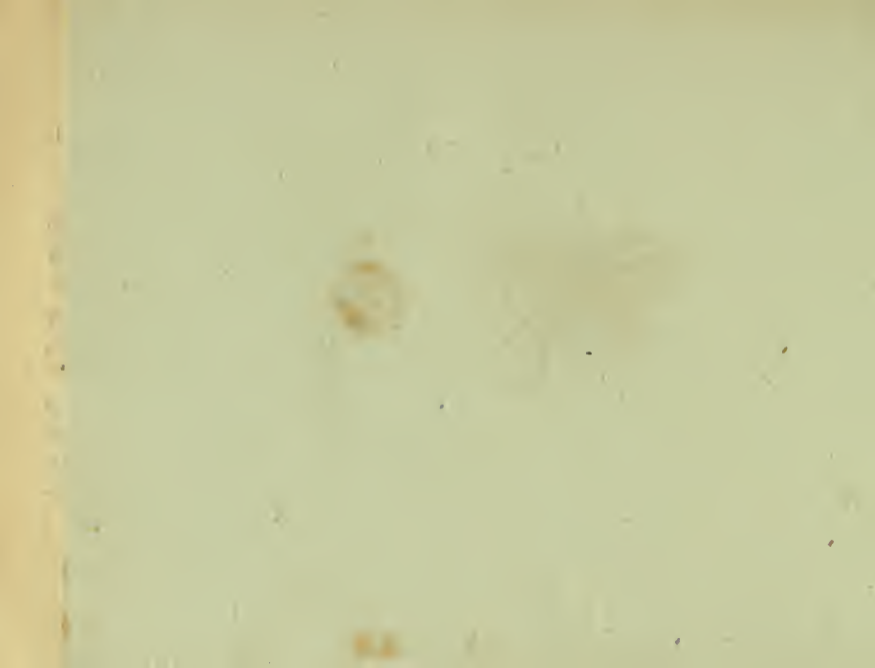
Legi primo vere in Eryfimo Barbarea L.

Habitus et statura *Andren. carbonar. Fabric.* est distinctissima. Caput atrum hirtum: vertex calvus striatus; stemmata nitida flavescens: frons inter antennis cinereo hirta: os villositate nigra barbatum: mandibulae fuscae nitidae superne fuscatae, apice irregulariter bidentatae. Oculi oblongi sordide cinerei. Antennae nigrae breves, articulo primo hirta. Thorax ater hirtus antice posticeque cinereus, medio fascia nigra. Scutellum nigrum, sed villositate utrinque in fasciculos abeunte cinerascens tectum. Abdomen atro-violaceum aeneum nudum nitidum, segmentis fuscis apice atro-violaceis: apice tantum nigro hirsuto. Pedes omnes nigri hirsuti. Abdomen subtus nitidum segmentis parum hirtis. Cum hanc speciem plusquam semel vivam viderim, alas apice colorem vivacissimum cyaneum, post mortem in obscure fuscum mutare, bene observare potui.





*Lasius cornutus* Michx.





ANDRENA cornuta.

*Die gehörnte Waldbiene.*

*Andrena cornuta*: nigra abdomine segmentorum marginibus albis subtus pilosis, clypeo elevato gibbo obtuso. *Fabric. Ent. system. T. III. n. 4. p. 308.*

Legi haud infrequens quotannis, primo vere, in hortis nostris, flores labiatos, imprimis *Lamium purpureum L.* frequentantem. Agilissimum animal, strenue et celerrime mellificans, hinc difficile captu.

a Magnitudo naturalis. b Caput auctum, ut clypeus sic dictus elevatus gibbus facile dignosci possit.





*Bremus collaris* Mith.



BREMVS collaris.

Die gelbhalsichte Hummel.

*Bremus collaris*: hirsutus niger, thorace abdomineque antice fascia flava, ano rufo.

*Apis* (?) *collaris*. Fabric. System. piezator. inedit.

Legi quotannis mensibus aestivis in editioribus sylvaticis, circa Thymum et Origanum muscitantem.

Habitus et statura *Apis sylvarum* Fabric. sed omnino differt. Caput nigrum: vertex calvus nitidus, linea a stemmatibus oriunda impressa, (quae fere omnibus *Bremis* communis): trons hirta nigra: clypeus os tegens subnudus apice parum rufescens. Oculi oblongi. Antennae nigrae. Thorax hirsutus ater, antice collari flavo. Scutellum nigrum villositate tectum. Abdomen nigrum basi flavo pubescens, postice nigrum, ano rufo. Pedes nigri. Tarsi rufescentes.

THE HISTORY OF THE

REIGN OF KING CHARLES THE FIRST

BY JOHN BURNET, BISHOP OF SALISBURY

IN THREE VOLUMES

THE SECOND VOLUME

CONTAINING THE HISTORY OF THE

REIGN OF KING CHARLES THE FIRST



*Ichneumon exhortator* Fabr.





ICHNEVMON exhortator.

*Die rothe Schlupfwespe mit halbschwarzem Unterleibe und weißem  
Afterpunkt.*

*Ichneumon exhortator*: ferrugineus capite abdominisque apice nigris, ano albo.  
*Fabric.* Entom. system. T. III. n. 88. p. 154.

Legi raro in montibus *Galio Boccone Allion.* infidentem.

Quamvis descriptionem illustr. *Fabricii* cum meis speciminibus exacte viderim convenire, non desum tamen haec pauca addere. Metathorax utrinque spinula acuta et brevi armatus, utrinque pubescens. Abdominis segmentum secundum apice utrinque in spinositatem elevatur. Aculeus abdomine dimidio brevior.

a Magnitudo naturalis, b Eadem aucta,

1870

The first building was built in 1870 and was a  
two-story structure.

The building was destroyed by fire in 1875 and  
was replaced by a new one.

The new building was built in 1875 and was a  
three-story structure.

The building was destroyed by fire in 1880 and  
was replaced by a new one.

The new building was built in 1880 and was a  
four-story structure.



*Ichneumon areator* Michx.



*[Faint, illegible text, possibly a signature or title]*

ICHNEVMON areator.

*Die ziegelroth und schwarz schekigte Schlupfwespe.*

*Ichneumon areator* : rufus nigro maculatus, alis albis fasciis duabus fuscis.

Legi in *Carduis nutante*, *lanceolato*, inter aphides.

Parvus. Caput nigrum orbita, fronteque rufis. Oculi magni exserti cinerei. Antennae rufae. Thorax rufus maculis tribus nigris, duabus lateralibus oblongis, media dorsali rotundata. Scutellum rufum puncto medio nigro. Metathorax niger, rufo marginatus. Abdomen rufum petiolo nigro, segmento secundo punctis duobus dorsalibus nigris, reliquis segmentis fusco marginatis. Aculeus rufescens. Pedes omnes rufi. Alae albae, fasciis duabus fuscis.

a Magnitudo naturalis. b Eadem aucta.

THE HISTORY OF THE

REIGN OF KING CHARLES THE FIRST

BY JOHN BURNET

IN TWO VOLUMES

LONDON, Printed by J. Sturges, at the Black-Swan in St. Dunstons Church-yard, 1724.

Vol. I.



*Anomalon cruentatus* Miki.

Jan  
Feb  
Mar  
Apr  
May  
June



London - 1845



ANOMALON cruentatus.

*Die blutroth geflekte anomalische Schlupfwespe.*

*Anomalon cruentatus*: fuscus abdomine falcato, scutello, metathorace sanguineis, pedibus rufis.

Legi in Sambuco, Betula inter aphides.

Parvus. Caput nigrum, orbita, fronteque rufis. Vertex transverse striatus. Mandibulae rufae. Antennae setaceae nigrae. Thorax fuscus sanguineo lineatus. Scutellum sanguineum. Metathorax sanguineus. Abdomen compressum falcatum fuscum, apice nigrum: seta rufa valvis nigris. Pedes rufi, femoribus posticis fuscis.

a Magnitudo naturalis. b Eadem aucta.

THE UNIVERSITY OF CHICAGO

PHILOSOPHY DEPARTMENT

PHILOSOPHY 101

LECTURE NOTES

BY [Name]

DATE [Date]

CHAPTER I

THE NATURE OF PHILOSOPHY

1.1. The history of philosophy

1.2. The methods of philosophy

1.3. The scope of philosophy

1.4. The importance of philosophy



*Ephemera vulgata* Fabr.



EPHEMERA vulgata.

*Der gemeine Haft. Die Uferaasfliege. L'Ephemere à trois filets,  
et ailes tachetées. Geoffr.*

*Ephemera vulgata*: cauda trifeta, alis fusco reticulatis maculatisque, corpore fusco. *Fabric* Entom. system. T. III. n. 1. p. 68. *Syst. Entom.* n. 1. p. 303. *Spec. Inf.* T. I. n. 1. p. 383. *Mant. Inf.* T. I. n. 1. p. 243.

*Ephemera vulgata.* *Linn.* *Syst. Nat.* n. 1. p. 906, ed. XIII. n. 1. p. 2628. *Fn.* *Suec.* n. 1472.

*Geoffr.* *Inf.* T. II. n. 1. p. 238.

*Degeer* *Inf.* T. II. n. 1. tab. 16. fig. 1.

*Schäffer* *Ic. Inf.* Ratisb. tab 9. fig. 5. 6.

*Panzer* *Nomenclat. d. Schäff. Inf.* p. 14. n. 5. 6.

Habitat larva in aquis, imago in arboribus aquis vicinis.

MEMORANDUM

The purpose of this memorandum is to provide information regarding the proposed changes to the existing policy on [illegible].

It is recommended that the proposed changes be approved, as they will result in a more efficient and effective process. The changes are outlined in the attached draft policy document.

The proposed changes are as follows: [illegible]

These changes are necessary to ensure that the organization remains competitive and responsive to the needs of our customers. It is requested that you review the draft policy and provide your comments by the deadline.

Thank you for your attention to this matter.



*Ephemera bioculata* Fabr.





EPHEMERA bioculata.

*Der doppeltaugigte Eintagshaft. L'Ephemere jaune à deux filets, et ailes reticulées. Geoffr.*

*Ephemera bioculata*: cauda bifeta flava, alis albis reticulatis, capite tuberculis duobus luteis. *Fabric.* Entom. syst. T. III. n. 9. p. 70. *Mant. Inf.* T. I. n. 7. p. 244.

*Ephemera bioculata.* *Linn.* Syst. Nat. n. 4. p. 906. ed. XIII. n. 4. p. 2629. *Fn.* Succ. n. 1473.

*Geoffr.* Inf. T. II. n. 5. p. 239. tab. 13. fig. 4.

*Schäffer* Ic. Inf. Ratisb. tab. 229. fig. 2. 3.

*Panzer* Nomenclat. d. Schöff. Inf. p. 191. n. 2. 3.

Habitat ad aquas, haud infrequens, foliis Betulae, Salic. infidens.

a Magnitudo naturalis. b Caput auctum.

THE UNIVERSITY OF CHICAGO

PH.D. THESIS

THE UNIVERSITY OF CHICAGO

THE UNIVERSITY OF CHICAGO

THE UNIVERSITY OF CHICAGO

THE UNIVERSITY OF CHICAGO



*Phryganea grandis* Fabr.



PHRYGANEA grandis.

*Die grosse Frühlingsfliege.*

*Pbryganea grandis*: alis fusco testaceis cinereo maculatis. *Fabric.* Entom. Syst. T. III. n. 9. p. 76. Syst. Ent. n. 6. p. 306. Spec. Inf. T. I. n. 8. p. 389. Mant. Inf. T. I. n. 9. p. 246.

*Pbryganea grandis.* *Linn.* Syst. Nat. n. 7. p. 909. ed. XIII. n. 7. p. 2633. Fn. Suec. n. 1485.

*Roef.* Inf. Bel. T. II. aquat. tab. 17.

*Schaeffer* Ic. Inf. Ratisb. tab. 109. fig. 3. 4.

*Panzer* Nomenclat. d. Schöff. Inf. p. 118. n. 3. 4.

Habitat larva in aquis intra cylindrum e ramentis longitudinalibus ligneis : imago in aquarum vicinia, arborum foliis insidens.

1864

1864

1864

1864

1864

1864



*Pseucus longicornis* Fabr.





PSOCVS longicornis:

*Der langhornigte Laushaft.*

*Pjocus longicornis*: niger ore pedibusque pallidis, antennis longioribus fuscis.

*Fabric. Entom. syst. Supplem. n. 1. p. 203.*

*Hemerobius longicornis. Fabric. Entom. Syst. T. III. n. 14. p. 84. Gen. Inf.*

*Mant, n. 245. Spec. Inf. T. I. n. 9. p. 394. Mant, Inf. T. I. n. 11, p. 247.*

Habitat in locis suffocatis, in sylvaticis,

a Magnitudo naturalis. b Eadem aucta.

THE UNIVERSITY OF CHICAGO

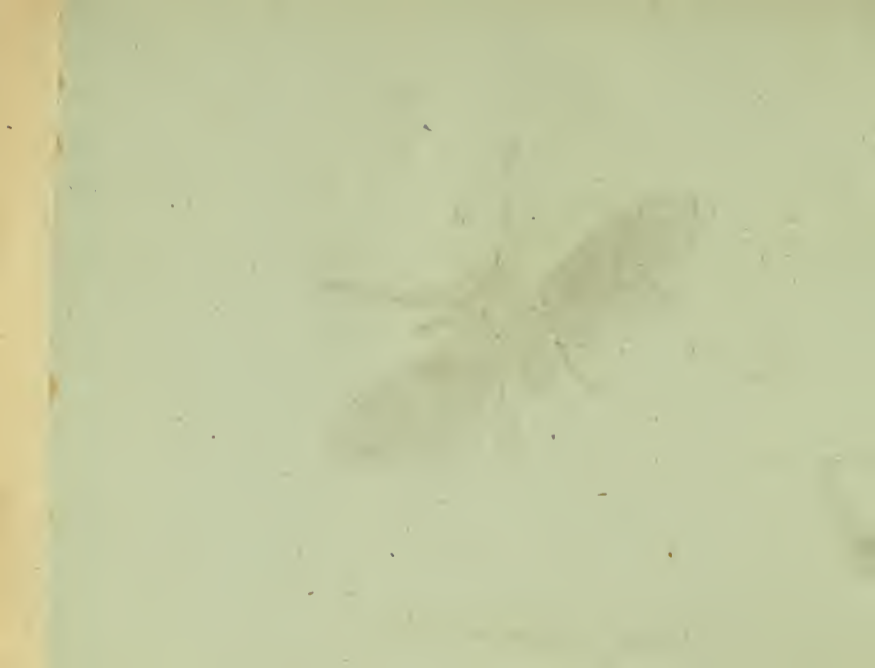
PHYSICS DEPARTMENT

PHYSICS 309  
LECTURE 10  
MAY 19, 1954

BY  
RICHARD FEYNMAN



*Psocus fasciatus* Fabr.



PSOCVS fasciatus.

*Der auf den Flügeln gebänderte Laushaft.*

*Pfocus fasciatus*: alis albis, fasciis tribus atomisque numerosis nigris. *Fabric.*  
Entom. syst. Supplem. n. 4. p. 203.

*Hemerobius fasciatus.* *Fabric.* Entom. syst. T. III. n. 17. p. 85. *Mant. Inf. T. I.*  
n. 13. p. 247.

Habitat in sylvaticis udis: in hortis ad sterquilinia.

a Magnitudo naturalis. b Eadem aucta.





*Psocus bipunctatus* Fabr:





PSOCVS bipunctatus.

*Der zweypunktirte Laushaft.*

*Pfocus bipunctatus*: flavo fuscoque varius, alis punctis duobus nigris. *Fabric.*  
Entom. system. Supplem. n. 7. p. 204.

*Hemerobius bipunctatus.* *Fabric.* Entom. syst. T. III. n. 23. p. 86. Syst. Ent.  
n. II. p. 310. Spec. Inf. T. I. n. 13. p. 394. Mant. Inf. T. I. n. 16. p. 247.

*Hemerobius bipunctatus.* *Linn.* Fn. Suec. n. 1514. Syst. Nat. ed. XIII. n. 27.  
p. 2641.

Habitat ad ripas aquarum, floribus aliquando insidens.

a Magnitudo naturalis. b Eadem aucta.

ANNALS OF THE

ROYAL CANADIAN MOUNTED POLICE

Volume 10, Number 1, 1967

Published by the Royal Canadian Mounted Police



*Psoeus quadripunctatus* Fabr.

L



*[Faint, illegible text at the bottom of the page]*

PSOCVS quadripunctatus.

*Der vierpunktirte Laushaft.*

*Pfocus quadripunctatus*: alis albis: basi punctis quatuor atris apice fusco radiatis.

*Fabric. Entom. System. Suppl. n. 8. p. 204.*

*Hemorobius quadripunctatus. Fabric. Entom. syst. T. III. n. 24. p. 86.*

Habitat in nemoribus: folia arborum plerumque frequentans.

a Magnitudo naturalis. b Eadem aucta.

# THE HISTORY OF THE

REIGN OF

CHARLES THE FIRST

BY

JOHN BURNET

OF THE UNIVERSITY OF OXFORD

IN TWO VOLUMES



*Aepialus lupulinus* Mas Fabr.





HEPIOLVS lupulinus. Mas.

*Der hopfenfarbige Schmalfalter. Der bogenflügelichte Schmalfalter.  
Das Männchen.*

*Hepiolus lupulinus*: alis cinereis, striga albidiore. *Fabric.* Entom. syst. T. V.  
n. 3. p. 6. *Syst. Entom.* n. 2. p. 589. *Spec. Inf.* T. II. n. 2. p. 207. *Mant.*  
*Inf.* T. II. n. 3. p. 134.

*Pbal. Noctua lupulina.* *Linn.* *Syst. Nat.* n. 86. p. 835. ed. XIII. n. 86. p. 2617.  
*Fn. Suec.* n. 1149.

*System. Verz. d. W. Schm.* n. 5. p. 61.

*Esper* eur. *Schm.* T. II. tab. 81.

*Hübner* eur. *Schmett. Bombyc.* n. 48.

*Borkhausen* europ. *Schm.* T. III. n. 41. p. 151.

Die Raupe dieses Schmalfalters lebt in der Erde, und nährt sich von den Wurzeln verschiedener Gewächse. Hr. *Borkhausen* fand sie im May an den Wurzeln einer Kohlstaude. Zur Verwandlung spinnt sie sich in der Erde ein längliches Gewebe, welches innwendig mit Fäden glatt ausgesponnen, auswendig aber von Erde, Wurzeln und Steinchen, welche mit eingewebt sind, rauh ist. Die Chrysalide gleicht der Chrysalide *Hep. humuli* in Gestalt, ist von hellbrauner Farbe, und auf jedem Ring, so wie am Ende mit Stachelspitzen besetzt. Der Falter entwickelt sich in vier bis sechs Wochen, und die Puppe dringt alsdann halb zum Gewebe heraus. *Borkhausen.*



*Hepialus lupulinus* Fem. Fabr.



HEPIOLVS lupulinus. Femina.

*Der hopfenfarbigte Schmalfalter. Der bogenflüglichte Schmalfalter.  
Das Weibchen.*

*Hepiolus lupulinus. Fabric. l. l. c. c.*

*Phal. Noctua lupulina. Linn. l. l. c. c.*

Lebt und wohnt bey seinem Männchen.









**Nro. 1. Allecula Morio Fabric.**

- 2. *Pytho caeruleus* Fabric.
- 3. *Pytho castaneus* Fabric.
- 4. *Brontes flavipes* Fabric.
- 5. *Pyrochroa rubens* Fabric.
- 6. *Melolontha vulgaris* Fabric.
- 7. *Melolontha brunnea* Fabric.
- 8. *Trachys minuta* Fabric.
- 9. *Trachys nana* Fabric.
- 10. *Catops agilis* Fabric.
- 11. *Myimeleon formicarium* Fabric.
- 12. *Cynips Rosae* Fabric.
- 13. *Anomalon Aphidum* Panzer.
- 14. *Nepa cinerea* Fabric.
- 15. *Ranatra linearis* Fabric.
- 16. *Naucoris cimicoides* Fabric.
- 17. *Aphis Pini* Fabric.
- 18. *Aphis Populeti* Panzer.
- 19. *Ceratopogon leucopterus* Meigen.
- 20. *Hirtea Marci* Mas. Meigen.
- 21. *Syrphus Rosarum* Fabric.
- 22. *Bombyx Iacobeae* Fabric.
- 23. *Bombyx Dominula* Fabric.
- 24. *Bombyx pulchella* Fabric.





*Allecula Morio Fabr.*



ALLECVLA Morio.

*Der schwarze rothfüßichte Stummkäfer.*

*ALLECVLA Morio*: nigra, pedibus piceis. *Fabric.* Syft. Eleuth. T. II. n. 1. p. 27.

*EROTYLVVS rufipes*: oblongus niger, pedibus piceis. *Fabric.* Ent. Syft. T. II.

n. 27. p. 40.

*CISTELA Morio*: nigra obscura, pedibus piceis. *Fabric.* Ent. syft. T. II. n. 24. p. 46.

*CISTELA opaca.* *Illiger* im Schneid. Magaz. I. 5. p. 610. n. 15.

*CISTELA opaca.* *Panzer* Faun. Inf. germ. 25. 18.

*CISTELA Morio.* *Paykull* Fn. Suec. T. II. n. 3. p. 123.

Habitat in dumetis, in floribus: infrequens.

Hanc speciem olim Cl. *Illiger* l. c. ceu novam sub *Cistelis* militantem distinxit, eandem, quam eodem nomine in Faun. inf. germ. l. c. delineavi. Neque vero repetitam huius figuram denuo curassem, si prius mihi innotuisset, *Illigeri* speciem eandem esse, quam illustr. *Fabricius* posthaec sub novo genere *Alleculae* proposuisset, quod, cum iam tabula excusa fuerat, ex Cl. *Illigeri* Magaz. III. p. 162. didici.

a Magnitudo naturalis. b Eadem aucta.





*Pytho caeruleus* Fabr.





PYTHO caeruleus.

*Der blaue Schmutzkäfer.*

**PYTHO caeruleus:** thorace fulcato niger, elytris striatis caeruleis, abdomine rufo.

*Fabric.* Syst. Eleuth. T. II. n. 1. p. 95. Mant. Inf. T. I. n. 3. p. 166.

**CVCVIVS caeruleus.** *Fabric.* Ent. syst. T. II. n. 4. p. 94.

**TENEBRIO depressus.** *Linn.* Syst. Nat. n. 11. p. 675. ed. XIII. n. 6. p. 1889.

**CVCVIVS caeruleus.** *Herbst* im Archiv. II. p. 6. n. 2. Tab. I. fig. 5. 6.

*Paykull.* Fn. Suec. T. II. n. 2. p. 166.

Habitat sub corticibus arborum.

a Magnitudo naturalis, b Eadem aucta.





*Pytho castaneus* Fabr.



PYTHO castaneus.

*Der castanienbraune Schmutzkäfer.*

*PYTHO castaneus*: thorace fulcato niger, elytris striatis fuscis, abdominis margine pedibusque testaceis. *Fabric. Syst. Eleuth. T. II. n. 3. p. 96.*

*CVCVIŪS testaceus. Fabric. Ent. syst. T. II. n. 6. p. 95.*

Habitat cum antecedenti,

Secundum Cl. *Illigerum* Magaz. III. p. 175. mera varietas antecedentis est.

a Magnitudo naturalis. b Eadem aucta.

THE NEW YORK

LIBRARY OF THE

ASTOR LENOX AND TILDEN FOUNDATIONS  
475 FIFTH AVENUE, NEW YORK, N. Y.

1911

1911

1911

1911



*Brontes flavipes* Fabr.





BRONTES flavipes.

*Der gelbfüßichte Plattkäfer.*

*BRONTES flavipes*: thorace denticulato nigro, pedibus flavescens. *Fabric.*

Syst. Eleuth. T. II. n. 2. p. 97.

*CVCVIVS flavipes*. *Fabric.* Ent. syst. T. II. n. 8. p. 95. Spec. Inf. T. I. n. 4.

p. 257. Mant. Inf. T. I. n. 6 p. 166. Iter Norveg. d. 14. Jun. p. 54.

*CERAMBYX planatus*. *Linn.* Syst. Nat. n. 15. p. 625. Fn. Suec. n. 645.

*CVCVIVS planatus*. *Herbst* im Archiv. II. n. 3. p. 7. tab. I. fig. 7. 8.

Habitat sub cortice arborum.

a Magnitudo naturalis. b Eadem aucta.

THE [illegible]

[illegible]

[illegible text]

[illegible text]



*Pyrochroa rubens* Fabr.



PYROCHROA rubens.

*Der ziegelrothe Feuerkäfer.*

**PYROCHROA rubens:** nigra capite thorace elytrisque sanguineis immaculatis.

*Fabric.* Syst. Eleuth. T. II. n. 2. p. 109. Ent. syst. T. I. n. 2. p. 105.

**LAMPYRIS rubens.** *Schaller* in Act. nat. cur. halenf. T. I. p. 301.

**PYROCHROA Satrapa.** *Schrank.* inf. austr. n. 324.

- Legi imaginem plerumque in floribus: larva in truncis putrescentibus salicis,





*Melolontha vulgaris* Fabr.





MELOLONTHA vulgaris.

*Der gemeine Maykäfer. Le Hanneton.*

*MELOLONTHA vulgaris*: testacea thorace villoso, incisuris abdominis albis.

*Fabric.* Syft. Eleuth. T. II. n. 6. p. 161. Syft. Entom. n. 2. p. 32. Spec.  
Inf. T. I. n. 3. p. 35. Mant. Inf. T. I. n. 3. p. 19.

*SCARABAEVS Melolontha.* Linn. Syft. Nat. n. 60. p. 554. ed. XIII. n. 60.  
p. 1562. Fn. Suec. n. 392.

*Rösel* Inf. Bel. T. II. Scar. I. tab. 1.

*Voet.* Coleopt. I. p. 29. n. 45. tab. 6. fig. 45. 46.

*Schäffer* Ic. Inf. Ratisb. tab. 93. fig. 1. 2. tab. 102. fig. 3. 4.

*Panzer* Nomencl. d. Schäff. Inf. p. 104. 112.

Habitat imago in Quercu, Hippocastano, Tilia, Pomona,  
a Mas magnitudine naturali. b Feminae caput, thorax.

THE UNIVERSITY OF CHICAGO

PH.D. THESIS

BY

DR. [Name]

IN THE DEPARTMENT OF [Department]

CHICAGO, ILLINOIS

19[Year]



*Melolontha brunnea* Fabr.



MELOLONTHA brunnea.

*Der braune Maykäfer. Le Scarabè fauve aux yeux noirs. Geoffr.*

*MELOLONTHA brunnea*: glabra testacea, elytris striatis, thorace utrinque puncto notato. *Fabric.* Syst. Eleuth. T. II. n. 54. p. 170. Syst. Ent. n. 20. p. 36. Spec. Inf. T. I. n. 26. p. 39. Mant. Inf. T. I. n. 32. p. 21. Ent. syst. T. I. n. 42. p. 165.

*SCARABAEVS brunneus.* *Linn.* Syst. Nat. n. 72. p. 556. ed. XIII. n. 72. p. 1568. *Geoffr.* Inf. T. I. n. 22. p. 83.

*Voet* Coleopt. I. tab. 7. fig. 53. 54.

*Paykull* Fn. Suec. T. II. n. 4. p. 209.

*Herbst* Nat. G. d. Käf. T. II. tab. 24. fig. 3.

Habitat in Arboribus, floribus: infrequens.

a Magnitudo naturalis. b Eadem aucta *Maris.* c Caput *Feminae* auctum.





*Trachys minuta* Fabr.





TRACHYS minuta.

*Der kleine Gleifskäfer. Le Richard triangulaire ondé. Geoffr.*

*TRACHYS minuta*: nigra, elytris rugis transversis albidis, thorace subtrilobi laevi.

*Fabric* Syft Eleuth. T. II. n. 5. p. 219.

*BVPRESTIS minuta*. *Fabric*. Ent. syst. T. II. n. III. p. 212. Syft. Ent. n. 38.

p. 223. Spec. Inf. T. I. n. 53. p. 281. Mant. Inf. T. I. n. 79. p. 183.

*BVPRESTIS minuta*. *Linn*. Syft. Nat. n. 24. p. 663. ed. XIII. n. 24. p. 1937

Fn Suec. n. 760.

*Geoffr*. Inf. T. I. n. 6 p. 128.

*Herbst* im Archiv. V. tab. 28 fig. 19.

*Poykull* Fn. Suec. T. II. n. 20. p. 232.

Habitat in umbrosis, in dumetis, in floribus.

a Magnitudo naturalis, b Eadem aucta.





*Trachys nana* Fabr.



TRACHYS nana.

*Der Zwerg - Gleiskäfer.*

*TRACHYS nana*: atra nitida elytris punctatis, thorace subtrilabo. *Fabric. Syst.*  
Eleuth. T. II. n. 11. p. 220.  
*Payk. Fn. Suec. n. 21. p. 233.*

Habitat in dumetis, Corylo, Carpino.

a Magnitudo naturalis. b Eadem aucta.

TEACHING AND

Dr. King - College

TEACHING AND

Dr. King - College

TEACHING AND

Dr. King - College

TEACHING AND



*Catops agilis* Fabri:





CATOPS agilis.

*Der schnellfüßichte Moderkäfer.*

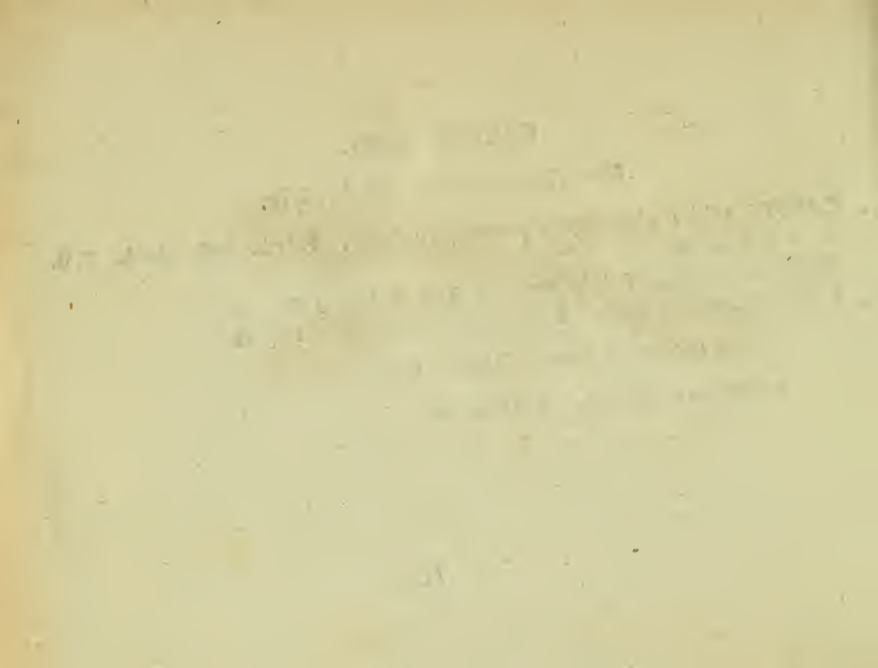
*CATOPS agilis*: niger elytris pedibusque testaceis. *Fabric.* Syst. Eleuth. T. II.  
n. 6. p. 565.

*TRITOMA dubia.* *Fabric.* Ent. syst. T. II. n. 5. p. 506.

*PTOMAPHAGVS agilis.* *Illiger* Kug. Käf. Pr. I. n. 2. p. 88.

Habitat sub cortice Quercus, Fagi.

a Magnitudo naturalis. b Eadem aucta.





*Myrmeleon formicarium* Fabr.



MYRMELEON formicarium.

*Der gemeine Ameisenhaft. Le Fourmileon. Geoffr.*

**MYRMELEON formicarium:** alis fusco nebulosis: macula postica marginali alba.

*Fabric.* Ent. Syst. T. III. n. 5. p. 93. Syst. Ent. n. 2. p. 312. Spec. Inf. T. I. n. 3. p. 398. Mant. Inf. T. I. n. 5. p. 249.

**MYRMELEON formicarium:** alis macula alba marginali postica. *Linn.* Syst.

Nat. n. 3. p. 914. ed. XIII. n. 3. p. 2643. Fn. Suec. n. 1509. It. oel. 149.

**FORMICA LEO.** *Geoffr.* Inf. T. II. n. 1. p. 258. tab. 14. fig. 1.

*Reaum.* Inf. IV. tab. 14. fig. 18 19. tab. 11. fig. 6. 8. et tab. 32. 33. 34.

*Roefel* Inf. Bel. T. III. tab. 17—20.

*Pod.* mus. graec. tab. 1. fig. 8.

*Schäffer* Ic. Inf. Ratisb. tab. 22. fig. 12.

*Panzer* Nomencl. d. Schöff. Inf. p. 33.

Habitat in arenosis, ad margines sylvarum.

Larva retrograda, sub fovea in avena excavata formicis insidiatur.





*Cynips Rosae* Fabr.





CYNIPS Rosae.

*Die Rosen-Gallwespe. Le Diplolepe du Bedeguar. Geoffr.*

*CYNIPS Rosae*: nigra abdomine ferrugineo postice nigro, pedibus ferrugineis.

*Fabric.* Ent. syst. T. III. n. 2. p. 100. Syft. Ent. n. 1. p. 315. Spec. Inf.

T. I. n. 1. p. 402. Mant. Inf. T. I. n. 2. p. 252.

*CYNIPS Rosae.* Linn. Syft. Nat. n. 1. p. 917. ed. XIII. n. 1. p. 2649. Faun.

Suec. n. 1518.

*DIPLOLEPIS Bedeguaris.* Geoffr. Inf. T. II. n. 2. p. 310.

*Reaum.* Inf. T. III. tab. 46. fig. 5—8. tab. 47. fig. 1—4.

Habitat in *Rosa canina* L. gallam struens, sub nomine Bedeguar notam.

a Magnitudo naturalis. b Eadem aucta.





*Anomalon Aphidum Nishi.*



ANOMALON Aphidum.

*Die Blattlaus - Schlupfwespe.*

*ANOMALON Aphidum*: luteus, occipite, metathorace, abdominis segmenta posticis margine nigris.

Habitat in pupis *Aphid. Pini Sylvestr.* cui maxime infesta.

Minuta. Caput luteum. Os pallidius. Occiput nigrum. Oculi magni exferti fusci. Antennae breves nigrae. Thorax luteus nitidus. Metathorax et scutellum nigra. Abdomen compressum falcatum luteum nitidum, segmentis posticis margine nigris. Pedes lutei. Alae hyalinae macula marginis antici ordinaria fusca.

a Magnitudo naturalis. b Eadem aucta.

THE HISTORY OF THE  
CITY OF BOSTON

The city of Boston, situated on a neck of land between the harbor and the bay, was first settled by a few Englishmen in 1630. It was the first of the New England colonies, and its history is a record of the struggle for freedom and independence. The city was the scene of the Boston Tea Party in 1773, and the Battle of the Clouds in 1780. It was the first city to be incorporated as a city in 1822. The city has a rich history of education, and was the first to establish a public school system in 1822. The city has also been the site of many important events, including the signing of the Declaration of Independence in 1776, and the signing of the Constitution in 1787. The city is a major center of commerce and industry, and is one of the most important cities in the United States.



*Nepa cinerea* Fabr.





NEPA cinerea.

*Die aschgraue Fangwanze. Der aschgraue europäische Wasser-scorpion.  
Der fliegende Wasser-scorpion. Le Scorpion aquatique à corps  
ovale. Geoffr.*

*NEPA cinerea*: cauda bifeta, corpore dimidio breviorē, corpore ovato. *Fabric.*  
Syst. Ryngot. n. 8. p. 107. Ent. syst. T. VI. n. 7. p. 63. Syst. Ent. n. 4.  
p. 692. Spec. Inf. T. II. n. 5. p. 333. Mant. Inf. T. II. n. 7. p. 277.

*NEPA cinerea. Linn.* Syst. Nat. n. 5. p. 714. ed. XIII. n. 5. p. 2121.

*Geoffr.* Inf. T. I. n. 2. p. 481.

*Rösel* Inf. Bel. T. III. tab. 22. fig. 6. 7. 8.

*Degeer* Inf. T. III. p. 361. n. 1. tab. 18. fig. 1.

*Schellenh.* Cimic. helvet. tab. 14.

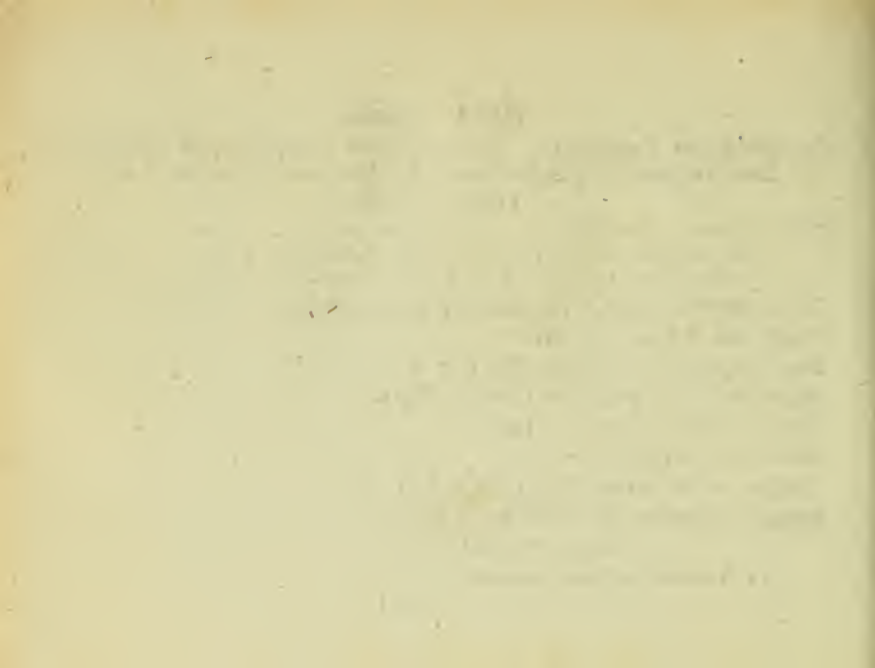
*Stoll.* Cimic. tab. 1. fig. 11.

*Schäffer* Ic. Inf. Ratisb. tab. 33. fig. 7. 8. 9.

*Panzer* Nomenclat. der Schäff. Inf. p. 48.

Habitat in aquis.

a Antennae magnitudine aucta.





*Ranatra linearis* Fabr.



RANATRA linearis.

*Die schmalleibichte Schweifwanze. Der Nadelwasserfcorpion. Der  
gemeine Wasserstecher. Le Scorpion aquatique à corps  
allongè. Geoffr.*

*RANATRA linearis*: cauda bifeta corporis longitudine, thorace unicolore. *Fabric.* Syst. Ryngot. n. 2. p. 109. Ent. syst. T. VI. n. 2. p. 64.

*NEPA linearis* *Fabric.* Syst. Ent. n. 6. p. 692. Spec. Inf. T. II. n. 7. p. 334.  
Mant. Inf. T. II. n. 9. p. 277.

*NEPA linearis.* *Linn.* Syst. Nat. n. 7. p. 714. ed. XIII. n. 7. p. 2122.  
*Geoffr.* Inf. T. I. n. 1. p. 480. tab. 10. fig. 1.

*Degeer* Inf. T. III. n. 2. p. 369. tab. 19. fig. 1. 2.

*Röjel* Inf. Bel. T. III. p. 141. tab. 23.

*Schellenb.* Cimic. helvet. tab. 13.

*Stoll*. Cimic. tab. 12. fig. 7.

*Schäffer* Ic. Inf. Ratisb. tab. 5. fig. 5. 6.

*Panzer* Nomencl. d. Schöff. Inf. p. 8.

Habitat in Aquis: cursu interrupto celerrime tendens: extra aquas quiescit, aquis reddita cursum denuo renovat. *Beckm.* oekonom. Bibl. VII. p. 379.

a Antenna magnitudine aucta.



*Naucoris cimicoides* Fabr.





NAVCORIS cimicoides.

*Die gemeine Wasserwanze. Der wanzenartige Wasserfcorpion. Der Wanzenfcorpion. La Naucore. La Punaise d'eau naucore.*

*NAUCORIS cimicoides*: abdominis margine serrato, capite thoraceque fusco flavoque variis. *Fabric* Syst. Ryngot n. 1. p. 110. Ent. syst. T. VI. n. 1. p. 66. Syst. Ent. n. 1. p. 693. Spec. Inf. T. II. n. 1. p. 334 Mant. Inf. T. II. n. 1. p. 277.

*NEPA cimicoides*. *Linn.* Syst. Nat. n. 6. p. 714, ed. XIII. n. 6. p. 2122.

*Geoffr.* Inf. T. I. n. 1. p. 474. tab. 9. fig. 5.

*Degeer* Inf. T. III. n. 3. p. 357. tab. 19. fig. 8. 9.

*Rösel* Inf. Bel. T. III. p. 173. tab. 28.

*Scbellenb.* Cimic. helv. tab. 12.

*Stoll.* Cimic. II. tab. 12. fig. 8 B.

*Schaeffer* Ic. Inf. Ratisb. tab. 33. fig. 3. 4.

*Panzer* Nomenclat. d. Schäff. Inf. p. 47.

Habitat in Aquis.

a Magnitudo naturalis. b Eadem aucta. c Antenna aucta.

THE HISTORY OF THE

... of the ...  
... of the ...  
... of the ...  
... of the ...

... of the ...

... of the ...

... of the ...

... of the ...

... of the ...

... of the ...



*Aphis Pini* Fabr.



APHIS Pini.

*Die Föhren-Blattlaus. Le Puceron lisse du Pin. Degeer.*

*APHIS Pini sylvestris ramorum.* Fabric. Syst. Ryngot. n. 44. p. 300. Ent. syst. T. VI. n. 44. p. 219. Spec. Inf. T. II. n. 39. p. 389. Mant. Inf. T. II. n. 44. p. 317.

*APHIS Pini.* Linn. Syst. Nat. n. 25. p. 735. ed. XIII. n. 25. p. 2207. Faun. Suec. n. 994.

*APHIS nuda Pini.* Degeer Inf. T. III. n. 1. p. 27. tab. 6. fig. 9—16.

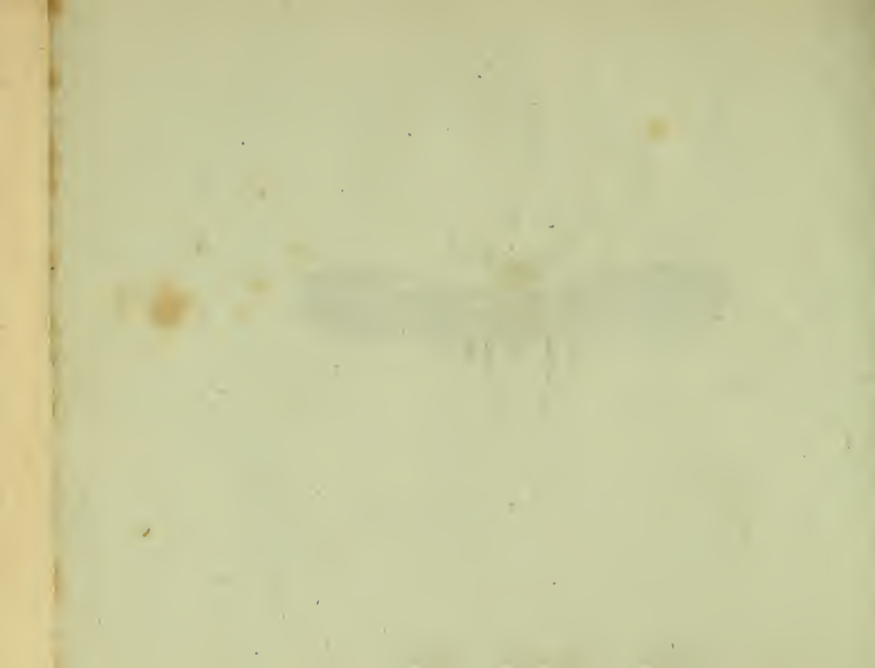
Habitat in *Pini sylvestris* Linn. ramis junioribus, quos saepius misere destruit.

a Magnitudo naturalis. b Eadem aucta.





*Aphis Populeti* Miki.





APHIS Populeti.

*Die Blattlaus auf den Blättern der Zitterpappel.*

*APHIS Populi tremulae foliorum.*

Legi frequens in foliis Populi tremulae *Linn.*

Corpus nigrum nudum. Regio ani absque tuberculis. Antennae nigrae basi flavae. Pedes nigri, antici flavi. Alarum costa marginalis flavescens.

a Magnitudo naturalis. b Eadem aucta.

1880  
The [illegible] of [illegible]  
[illegible] [illegible] [illegible]

[illegible] [illegible] [illegible]  
[illegible] [illegible] [illegible]  
[illegible] [illegible] [illegible]  
[illegible] [illegible] [illegible]

[illegible] [illegible] [illegible]  
[illegible] [illegible] [illegible]  
[illegible] [illegible] [illegible]



*Ceratopogon leucopterus* Meigen.



CERATOPOGON leucopterus.

*Die weifsflüglichte Barthornmücke.*

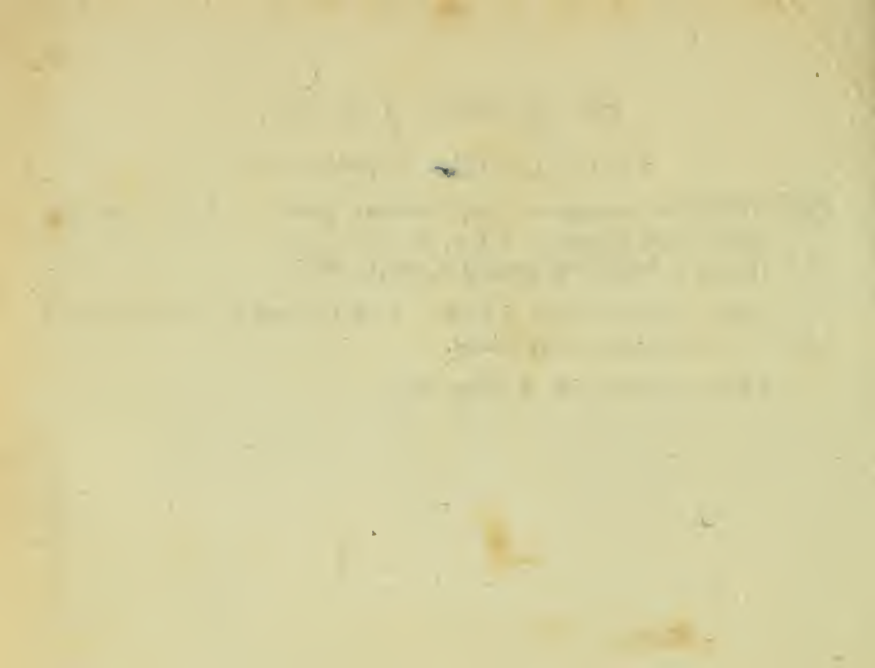
*CERATOPOGON leucopterus*: ater halteribus pedibusque fuscis; alis albis.

*Meigen* Class. dipteror. I. n. 4. p. 28.

Habitat in floribus: in Heracleo Spondyl. *Linn.*

Thorax aterrimus elevatus f. gibbus. Pedes (in meis speciminibus) obscure fufis f. potius nigricantes. Alae lacteae.

a Magnitudo naturalis. b Eadem aucta.





*Hirtea Marci* Mas Meigen.





HIRTEA Marci. Mas.

*Die schwarzrandige Haarfliege. Das Männchen.*

*HIRTEA Marci*: atra alis niveis (♂) aut fuscis (♀): margine exteriori nigro.

*Meigen* Class. dipter. I. n. 2. p. 108.

*HIRTEA hortulana*: alis hyalinis: margine exteriori nigro. *Fabric.* Ent. syst.

Supplem. n. 2. p. 551.

*TIPVLA hortulana*. *Fabric.* Ent. syst. T. VI. Syst. Ent. n. 38. p. 753. Spec.

Inf. T. II. n. 50. p. 409. Mant. Inf. T. II. n. 62. p. 327.

*TIPVLA hortulana*. *Linn.* Syst. Nat. n. 46. p. 977. ed. XIII. n. 46. p. 2825.

*Reaum.* Inf. T. V. tab. 7.

*Schaeffer* Ic. Inf. ratisb. tab. 104. fig. 8. 9.

*Panzer* Nomenclat. d. Schäff. Inf. p. 114.

Habitat frequens in floribus, in pratis: primo vere.

a Magnitudo naturalis, b Eadem aucta.





*Syrphus Rosarum* Fabr.



SYRPHVS Rosarum.

*Die Rosenschwebefliege.*

*SYRPHVS Rosarum*: antennis setariis nudus, thorace aeneo nigro, abdomine atro: maculis duabus flavis. *Fabric. Ent. syst. T. VI. n. 109. p. 307.*

Habitat in editioribus sylvaticis.

a Magnitudo naturalis. b Eadem aucta.





*Bombyx Jacobeae* Fabr.





BOMBYX Iacobaeae.

*Der Iacobskrautspinner. La Phalene Carmin du Senegon. Geoffr.*

*BOMBYX Iacobaeae*: alis incumbentibus fuscis: linea punctisque duobus rubris, posticis rubris nigro marginatis. *Fabric.* Ent. syst. T. IV. n. 181. p. 464. *Syst.* Ent. n. 110. p. 588. *Spec. Inf.* T. II. n. 112. p. 195. *Mant. Inf.* T. II. n. 160. p. 127.

*PHALAENA Noct. Iacobaeae.* *Linn.* Syst. Nat. n. 111. p. 839. ed. XIII. n. 111. p. 2445. *Fn. Suec.* n. 1155.

*Geoffr.* Inf. T. II. n. 175. p. 146.

*Sist. Verz. d. W. Schm.* n. 12. p. 68.

*Esper* europ. Schmett. T. III. p. 87. tab. 91. fig. 6—8.

*Rösel* Inf. Bel. 1. Th. tab. 49.

*Schaeffer* Ic. Inf. Ratisb. tab. 47. fig. 2. 3.

*Panzer* Nomencl. d. Schäff. Inf. p. 64.

*Borkhaus.* eur. Schmett. T. III. n. 91. p. 262.

Die einzige Futterpflanze der Raupe ist die *Jacobs*pflanze (*Senecio Jacobea* L.), bey dringendem Hunger trift sie doch auch von andern Arten des *Senecio*. Gemeinlich kommt sie im Julius, wenn diese Pflanze in voller Blüthe steht, zum Vorschein. Man findet sie auch noch zuweilen im Herbst. Wenn sie sich verwandeln will, scharrt sie sich gewöhnlich ein Grübchen in die Erde, und legt darinn ein sehr dünnes Gespinnst an. Die Chrysalide ist rothbraun, zuweilen sehr dunkel und ganz ins schwarze gemischt, und fast von eyrunder Gestalt. Sie ist sehr steif, und man kann, ohne ihr Schaden zu thun, keinen Ring an ihr bewegen. Auch von selbst, äuffert sie nicht die geringste Empfindung. Im folgenden Jahr im Mai oder Junius entwikelt sich der Spinner, hiegt oft bey Tage, und nährt sich vom Blumennektar der schirmtragenden und syngenesischen Pflanzen. Im Ruhestand trägt er seine Flügel abhänghend, und sehr feste an den Leib angeschlossen. *Borkhausen.*



*Bombyx Dominula Fabr.*



BOMBYX Dominula.

*Der Hundszungenspinner. Der Fräuleinfalter. Der Specht.*

*BOMBYX Dominula*: alis incumbentibus atris: maculis albo flavescens, posticis rubris nigro maculatis. *Fabric.* Ent. Syst. T. IV n. 210. p. 475. Syst. Ent. n. 93. p. 583. *Spec. Inf.* T. II. n. 130. p. 200. *Mant. Inf.* T. II. n. 183. p. 130.

*PHAL. Noctua Dominula.* *Linn.* Syst. Nat. n. 90. p. 834. ed. XIII. n. 90. p. 2442. *Syst. Verz. der W. Schmet.* n. 8. p. 53.

*Esper* eur. *Schm.* T. II. p. 38. tab. 83. fig. 1—4.

*Rösel* *Inf.* *Bel.* T. III. p. 267. tab. 47.

*Schaeffer* *1c.* *Inf.* *Ratisb.* tab. 77. fig. 3. 4.

*Panzer* *Nomenclat. d. Schäff. Inf.* p. 92.

*Borkhausen* eur. *Schmet.* T. III. n. 61. p. 202.

Die Raupe dieses Spinners nährt sich von mehreren Pflanzen und zarten Strauchblättern. Man findet sie auf Wollweiden, Schlehen, Brombeer, Taubeneffel, Brenneffel, Klee, Erdbeeren, und vorzüglich auf Hundszungen (*Cynogloss. officin. L.*) Sie kommt im Julius oder August aus dem Ei, und überwintert nach der dritten oder vierten Häutung. Schon im März findet man sie gesellschaftlich auf den erwähnten Pflanzen. Wenn mehrere Raupen vorhanden sind, so spinnen sie sich gemeinschaftlich in ein dünnes durchsichtiges Gewebe von weisser Farbe ein. Die Chrysaliden sind rothbraun und glänzend, von der Gestalt der gewöhnlichen Bärenchrysaliden, mit einer kurzen Spitze am Hinterleibe. Sie haben eine sehr dünne durchscheinende Schale. Die Spinner entwickeln sich in einer Zeit von drey bis vier Wochen. Die Falter fliegen oft bey Tage, und suchen ihre Nahrung auf den Schirmblumen, und auf den Blumen aus der Klasse der Syngenesie.

*Borckhausen.*



*Bupalus pichalla* Fabr.





BOMBYX pulchella.

*Der Sonnenwendblumen-Spinner. Der Blutpunkt. Der tuffenschöne Falter.*

*BOMBYX pulchella*: alis albis: anticis nigro fanguineoque punctatis, posticis apice nigris. *Fabric.* Ent. syst. T. IV. n. 224. p. 479. Syst. Ent. n. 102. p. 586. Spec. Inf. T. II n. 142. p. 203. Mant. Inf. T. II. n. 197. p. 131.

*PHAL. Tinea pulchella.* *Linn.* Syst. Nat. n. 349. p. 884. ed. XIII. n. 349. p. Syst. Verz. d. W. Schmett. n. 9. p. 68.

*Sulzers* abgek. Gesch. d. Inf. p. 162. tab. 23. fig. 11.

*Scopol.* carn. n. 514. ic. 514.

*PHALENA Lotrix.* *Cramer* Inf. X. tab. 109. fig. E, F.

*Schaeffer* Ic. Inf. Ratisb. tab. 122. fig. 1.

*Panzer* Nomenclat. d. Schäff. Inf. p. 126.

*Borkhaus.* eur. Schmett. T. III. n. 89. p. 259.

Die Raupe dieses Spinners lebt auf der europäischen Sonnenwende (*Heliotropium europaeum* Linn.) und auf dem Ackervergiftsmeynicht (*Myosotis arvensis*). Sie ist in manchen Gegenden Deutschlands annoch selten, findet sich aber hin und wieder im südlichen Deutschland, im Oestreichischen, in Baiern, um Augsburg etc. desgleichen in der Schweiz und in Italien. Nach *Cramer* wird sie auch im Orient, in Amerika und Neuholland angetroffen.





- Nro. 1. *Blaps Gages* Fabric.  
— 2. *Blaps spinipes* Fabric.  
— 3. *Psoa viennensis* Fabric.  
— 4. *Cassida viridis* Fabric.  
— 5. *Cassida equestris* Fabric.  
— 6. *Cassida vibex* Fabric.  
— 7. *Cyphon hemisphaericus* Fabric.  
— 8. *Hispa atra* Fabric.  
— 9. *Dasytes niger* Fabric.  
— 10. *Dasytes caeruleus* Fabric.  
— 11. *Cerocoma Schäfferi* Fabric.  
— 12. *Blatta orientalis* Fabric.  
— 13. *Blatta lapponica* Fabric.  
— 14. *Blatta maculata* Fabric.  
— 15. *Blatta hemiptera* Fabric.  
— 16. *Foenus iaculator* Fabric.  
— 17. *Psen rufa* Panzer.  
— 18. *Trachusa lobata* Mas. Panzer.  
— 19. *Trachusa atra* Panzer  
— 20. *Nomada lateralis* Mas. Panzer.  
— 21. *Nomada lateralis Femina* Panzer.  
— 22. *Nomada interrupta Femina*. Panzer.  
— 23. *Papilio Nymphal. Euphrosyne* Fabric.  
— 24. *Papilio Saryus Cynthia* Fabric.





*Blaps Gages Fabr.*





BLAPS Gages.

*Der größte Todtenkäfer.*

- BLAPS Gages*: nigra thorace rotundato, elytris mucronatis laevissimis. *Fabric.*  
Syst. Eleuth. I. n. 1. p. 141. Syst. Ent. n. 1. p. 254. Spec. Inf. I. n. 1.  
p. 321. Mant. Inf. I. n. 1. p. 210. Ent. syst. I. n. 1. p. 106.
- Tenebrio Gigas*. Linn. Syst. Nat. n. 14. p. 676. ed. XIII. n. 1. p. 2000.
- Blaps Gigas*. *Herbst* Nat. d. Käf. VIII. n. 1. p. 181. tab. 128. fig. 1.
- Blaps lusitanica*. *Eiusd.* Nat. d. Käf. VIII. n. 21. p. 197. tab. 129. fig. 2.

Habitat in locis suffocatis in Germania australi.





*Blaps spiniipes* Fabi:



BLAPS spinipes.

*Der Stachelfüßichte Todtenkäfer.*

*BLAPS spinipes*: ovata atra elytris laevibus, tibiis anticis dilatato-spinosis. *Fabr.*  
*ric.* Syst. Eleuth. I. n. 5. p. 142. Ent. syst. Supplem. n. 5. p. 46.

*Carabus blaptoides.* *Creutzer* Versuch. n. 5, p. 112. tab. 2. fig. 17.

Habitat in Austria.





*Psoa viennensis* Fabr.





PSOA viennensis.

*Der wienersche Kaukäfer.*

*PSOA viennensis*: villosa aenea, elytris ferrugineis. *Fabric. Syst. Eleuth. I. n. 1.*  
p. 293.

*Psoa viennensis*. *Herbst Nat. d. Käf. VII. n. 1. p. 215. tab. 109. fig. 5.*

*Dermeestes dubius*. *Rossi Fn. Etrusc. I. n. 343. p. 43.*

Habitat in Austria.

a. Magnitudo naturalis. b Eadem aucta.





*Cassida viridis* Fabr.



CASSIDA viridis.

*Der grüne Schildkäfer. La Casside verte.*

*CASSIDA viridis*: viridis pedibus pallidis: femoribus nigris. *Fabric.* Syft. Eleuth. I. n. 1. p. 387. Syft. Ent. n. 1. p. 88. Spec. Inf. I. n. 1. p. 107. Mant. Inf. I. n. 1. p. 62. Syft. Ent. I. n. 1. p. 292.

*Cassida rubiginosa.* Illiger Kug. Käf. Pr. I. n. 4. p. 479.

*Cassida rubiginosa.* Herbst Nat. d. Käf. VIII. n. 5. p. 223. tab. 129. fig. 7.  
*Rösel* Inf. Bel. II. tab. 6.

Habitat plerumque in Carduis: *Linn.*

a Magnitudo naturalis. b Eadem aucta.





*Cassida equestris* Fabr.





CASSIDA equestris.

*Der Ritter - Schildkäfer.*

*CASSIDA equestris*: viridis elytrorum basi striga argentea, abdomine atro, margine pallido. *Fabric.* Syst. Eleuth. I. n. 3. p. 388. *Mant. Inf.* I. n. 2. p. 62. *Ent. syst.* I. n. 2. p. 292.

*Cassida viridis.* *Linn.* Syst. Nat. n. 1. p. 574. ed. XIII. n. 1. p. 1635.

*Cassida viridis.* *Illiger* Kug. Käf. Pr. I. n. 5. p. 480.

*Schäffer* Ic. Inf. ratib. tab. 27. fig. 5.

*Panzer* Nomenclat. d. Schäff. Inf. n. 5. p. 39.

Habitat in plantis labiatis.

Striga elytrorum argentea cum vita perit.

a. Magnitudo naturalis. b. Eadem aucta.





*Cassida vibex* Fabr.



CASSIDA vibex.

*Der Striemen - Schildkäfer.*

*CASSIDA vibex*: virens, futura dorsali fanguinea, femoribus nigris. *Fabric.*  
Syft. Eleuth. I. n. 6. p. 389. Mant. Inf. T. I. n. 5. p. 62. Ent. syft. L.  
n. 4. p. 293.

*Cassida vibex*. Linn. Syft. Nat. n. 5. p. 5. p. 575. ed. XIII. n. 5. p. 1637.

*Cassida vibex*. Illiger Kug. Käf. Pr. I. n. 2. p. 477.

*Scriba* symb. ent. n. 15. p. 80. tab. 8. fig. 1.

*Herbst* Nat. d. Käf. VIII. n. 3. p. 218. tab. 129. fig. 5. c.

Habitat in pratis in plantis.

a Magnitudo naturalis. b Eadem aucta-





*Cyphon hemisphericus* Fabr.





CYPHON hemisphaericus.

*Der halbkugelrunde Iochkäfer.*

*CYPHON hemisphaericus*: saltatorius, suborbiculatus, depressus, niger. *Fabric.*  
Syst. Eleuth. I. n. 7. p. 502.

*Galleruca hemisphaerica*. *Fabric.* Ent. syst. II. n. 107. p. 34.

*Chrysomela hemisphaerica*. *Fabric.* Spec. Inf. I. n. 116. p. 137. *Mant. Inf. I.*  
n. 149. p. 78.

*Chrysomela hemisphaerica*. *Linn.* Syst. Nat. n. 68. p. 595. ed. XIII. n. 68. p. 1696.

Habitat in Corylo; in dumetis, arbutis.

a Magnitudo naturalis. b Eadem aucta.





*Hispa atra* Fabr.



HISPA atra.

*Der schwarze Stachelkäfer. La Chateigne noire. Geoffr.*

*HISPA atra*: atra thorace elytrisque spinosis. *Fabric.* Syst. Eleuth. II. n. 2. p. 58.  
Syst. Ent. n. 7. p. 71. Spec. Inf. I. n. 10. p. 83. Mant. Inf. I. n. 9. p. 47.  
Ent. syst. II. n. 1. p. 70.

*Hispa atra.* *Linn.* Syst. Nat. n. 1. p. 603. ed. XIII. n. 1. p. 1732.

Schrift. der berl. Ges. naturf. Fr. IV. tab. 7. fig. 6.

*Geoffr.* Inf. I. n. 7. p. 243.

*Rossi* Fn. Etrusc. I. n. 129. p. 52.

Habitat in graminosis.

a Magnitudo naturalis. b Eadem aucta.





*Dasistes niger* Fabr.





DASYTES niger.

*Der schwarze Brandkäfer.*

*DASYTES niger*: pilosus niger elytris laeviusculis. *Fabric. Syst. Eleuth. II.*  
n. 4 p 72.

*Lagria nigra* *Fabric. Ent. Syst. II. n. 11. p. 80. Spec. Inf. app. II. p 498.*  
*Mant. Inf. I. n. 19. p. 94.*

*Anobium nigrum.* *Fabric. Syst. Ent. n. 4. p. 62. Spec. Inf. I. n. 5. p 71.*

*Dermestes niger.* *Linn. Syst. Nat. n. 28. p. 564. ed. XIII. n. 232. p. 1730. Fn.*  
*Suéc. n. 439.*

*Melyris nigra.* *Illiger Kug Käf. Pr. I. n. 2. p. 309.*

*Dasytes niger.* *Paykull, Fn. Suéc. II. n. 1. p. 156.*

Habitat in floribus, praesertim in umbelliferis, compositis.

a Magnitudo naturalis b Eadem aucta.





*Dasytes caeruleus* Fabr.



DASYTES caeruleus.

*Der blaue Brandkäfer.*

*DASYTES caeruleus*: subvillosus cyaneus, antennis nigris. *Fabric.* Syst. Eleuth.  
II. n. 7 p. 73.

*Lagria caerulea.* *Fabric.* Ent. syst. II. n. 14. p. 84. Mant. Inf. I. n. 22. p. 94.

*Lagria cyanea.* *Fabric.* Spec. Inf. app. p. 499.

*Anobium cyaneum.* *Fabric.* Syst. Ent. n. 6. p. 63. Spec. Inf. I. n. 7. p. 72.

*Melyris caerulea.* *Illiger* Kug. Kät Pr. I. n. 1. p. 308.

Habitat in floribus.

a Magnitudo naturalis. b Eadem aucta.





*Cercooma Schäfferi* Fabr.

1876



1876



CEROCOMA Schäfferi.

*Der Schäffersche Kronenkäfer. La Cerocome. Geoffr.*

*CEROCOMA Schäfferi*: viridis, antennis pedibusque luteis. *Fabric. Syst. Eleuth.*

II. n. 1. p. 74. *Syst. Ent. n. 1. p. 262. Spec. Inf. I. n. 1. p. 331. Mant.*

*Inf. I. n. 1. p. 217. Ent. syst. II n. 1. p. 81.*

*Meloe Schaefferi. Linn. Syst. Nat. n. 12. p. 681. ed. XIII. n. 12. p. 2001.*

*Geoffr. Inf. I. n. 1. p. 358.*

*Schäffer* Abhandl. II Nr. VII, p. 291, tab. fig. 1—22.

— — *Icon. Inf. ratisb. tab. 53. fig. 8 9.*

*Panzer* *Nomencl. d. Schöff. Inf. n. 8. 9. p. 71.*

Habitat in floribus umbelliferis, et compositis.

a Magnitudo naturalis. b Eadem aucta Maris. c Thorax, caput cum antennis, aucta Feminae.





*Blatta orientalis* Fabr.



BLATTA orientalis.

*Die orientalische Schabe. Die gemeine Pfisterschabe. Der ostindische Kakkerlake. Die grosse schwarze Stubenschabe. La Blatte des cuisines. Blatta pistrinaria seu molendinaria.*

*BLATTA orientalis*: ferruginea fusca immaculata, elytris fulco oblongo. *Fabric.*  
Ent. syst. III. n. 17 p. 9. Syst. Ent. n. 12. p. 272. Spec. Inf. I. n. 14. p.  
343. Mant. Inf. I. n. 16. p. 226.

*Blatta orientalis.* *Linn.* Syst. Nat. n. 7. p. 688. ed. XIII. n. 7. p. 2043.

*Geoffr.* Inf. I. n. 1. p. 380. tab. 7. fig. 7.

*Sulzer* abgek. Gesch. d. Inf. p. 77. tab. 8. fig. 2.

*Schaeffer* Ic. Inf. ratisb. tab. 155. fig. 6. 7.

*Panzer* Nomencl. der Schäff. Inf. n. 6. 7. p. 145.

Habitat iam ante duo saecula in Europa: consumit panem, cibaria, calceos,  
velocissime cursitans, lucifuga,





*Blatta lapponica* Fabr.





BLATTA lapponica.

*Die lappländfche Schabe.*

*BLATTA lapponica*: flavescens elytris nigro maculatis. *Fabric.* Ent. syst. III. n. 21. p. 10. Syst. Ent. n. 14. p. 273. Spec. Inf. I. n. 16. p. 344. Mant. Inf. I. n. 20. p. 226.

*Blatta lapponica.* *Linn.* Syst. Nat. n. 8. p. 688; ed. XIII, n. 8. p. 2044. Fn, Suec. n. 863.

*Degeer* Inf. III. n. 2. p. 345. tab. 25. fig. 8. 9. 10.

*Schaeffer* Ic. Inf. ratisb. tab. 88. fig. 2. 3.

*Panzer* Nomenclat. d. Schäff. Inf. n. 2. 3. p. 101.

Habitat haud infrequens in dumetis.

a Magnitudo naturalis. b Eadem aucta.





*Blatta maculata* Fabr.



BLATTA maculata.

*Die gefleckte Schabe.*

*BLATTA maculata*: thorace nigro, margine albo: elytris pallidis, macula magna apicis nigra. *Fabric.* Ent. syst. III. n. 26. p. II. Spec. Inf. append. II, p. 501. Mant. Inf. I. n. 23. p. 226.

*Blatta maculata.* Naturforsch. XV. tab. 3. fig. 17. 18.

Habitat in nemoribus sub foliis arborum deciduis.

a. Magnitudo naturalis. b. Eadem aucta.





*Blatta hemiptera* Fabi:





BLATTA hemiptera.

*Die halbgedekte Schabe.*

*BLATTA hemiptera*: atra thoracis margine, elytris abbreviatis pallidis. *Fabric.* Ent. syst. III. n. 30. p. 12.

Habitat locis obscuris, suffocatis.

a Magnitudo naturalis. b Eadem aucta.





*Foenus irculator* Fabr.



FOENVUS iaculator. Femina.

*Die schwarzfüßichte Gichtwespe. Das Weibchen. L'Ichneumon à pattes  
postérieures très longues et grosses. Geoffr.*

*FOENVUS iaculator*: niger abdomine falcato medio rufo, tibiis posticis clavatis  
basi apiceque albis. *Fabric. Ent. syst. Supplem. n. 1. p. 240.*

*Ichneumon iaculator. Fabric. Syst. Ent. n. 73. p. 340. Spec. Inf. I. n. 92. p. 435.  
Mant. Inf. I. n. 110. p. 268. Ent. syst. III. n. 183. p. 177.*

*Ichneumon iaculator. Linn. Syst. Nat. n. 52. p. 937. ed. XIII. n. 52. p. 2696. Fa.  
Suec. n. 1626.*

*Geoffr. Inf. II. n. 16. p. 328.*

*Degeer Inf. I. tab. 36. fig. 10.*

*Reaumur Inf. IV. tab. 10. fig. 14.*

*Schaeffer Ic. Inf. ratisb. tab. 119. fig. 5.*

*Panzer Nomencl. d. Sch. Inf. n. 5. p. 125.*

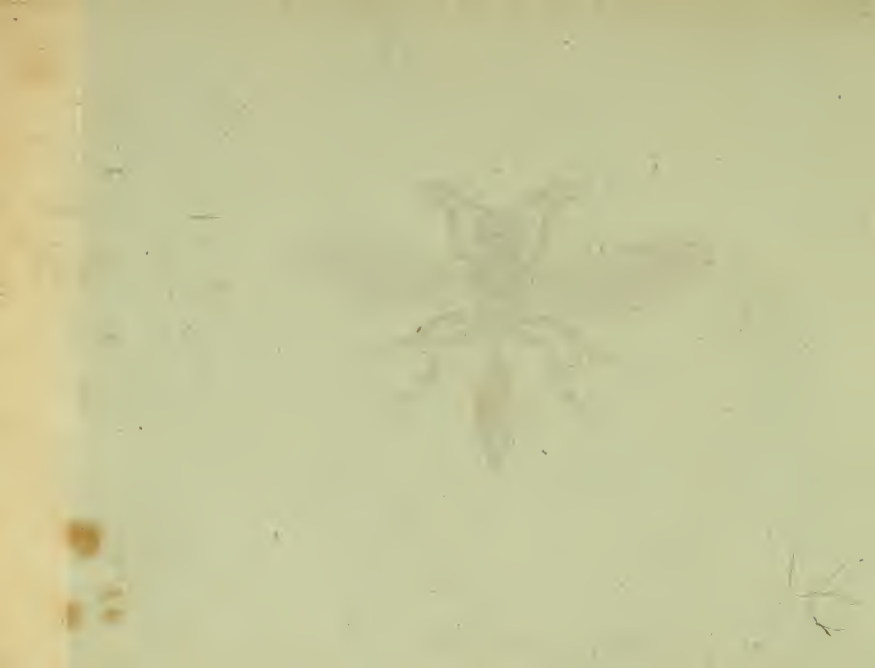
Habitat imago in umbelliferis frequens.

a Magnitudo naturalis. b Eadem aucta.





*Psen rufa* Niki.





PSEN rufa.

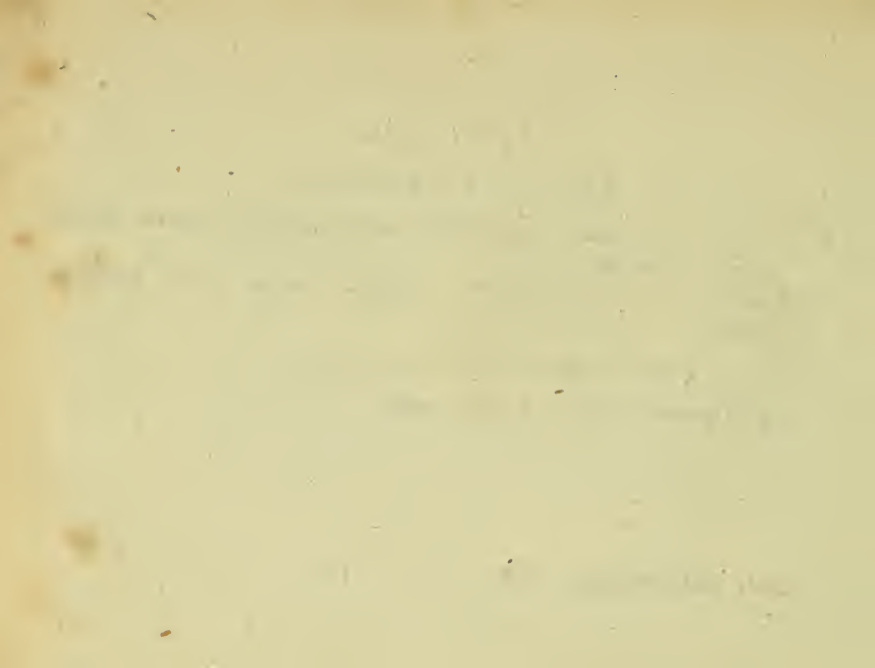
*Die rothe Lehmwespe.*

*PSEN rufa*: atra, nitida, abdomine segmentis secundo tertio quarto, antennis apice tarsisque rufis.

*Trypoxylon equestre*: atrum glabrum, abdominis segmento secundo ferrugineo.  
*Fabric.* Syst. Piezator. n. 6. p. 182.

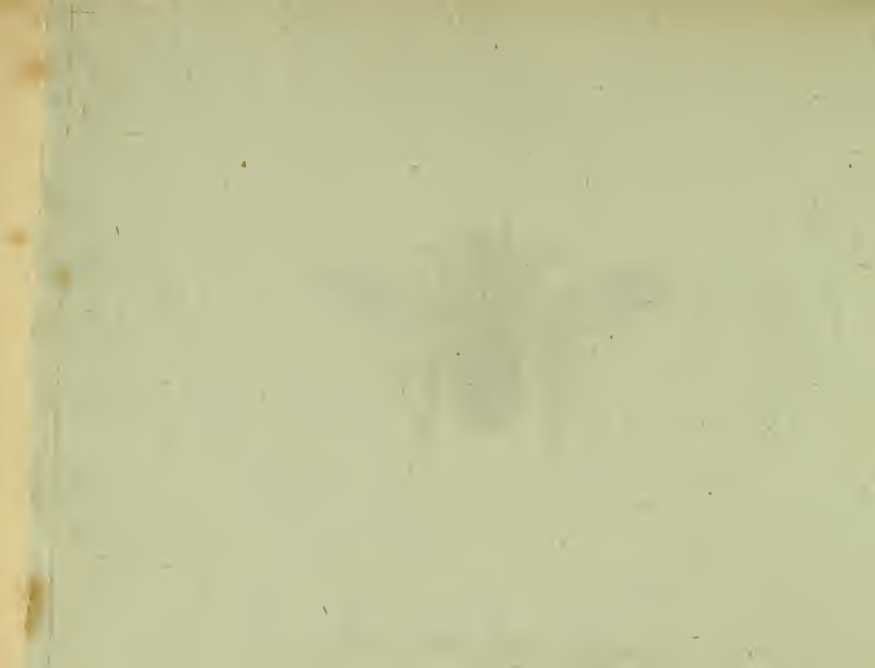
Legi quotannis locis editioribus in floribus.

a Magnitudo naturalis. b Eadem aucta.





*Trachusa lobata* Mas Nishi.



TRACHVSA lobata. Mas.

*Die lappichte Raubbiene. Das Männchen.*

*TRACHVSA lobata*: atra pubescens, mandibulis arcuatis, antennis apice rufis, femoribus posticis muticis.

*Andrena lobata*. Faun. Inf. germ. LXXII. 16. *Femina*.

*Dasypoda lobata*. *Fabric.* Syst. Piezat. n. 3. p. 336. *Femina*.

*Philanthus ater*. *Fabric.* Ent. syst. III. n. 13. p. 292. *Mas*.

*Apis calcarata*. *Scop. carn.* n. 803. absque icone. *Femina*.

Legi quotannis in Thracia hirta et hispida,

a Magnitudo naturalis, b Eadem aucta,

THE UNIVERSITY OF CHICAGO  
LIBRARY

THE UNIVERSITY OF CHICAGO  
LIBRARY  
1215 EAST 58TH STREET  
CHICAGO, ILL. 60637  
TEL: 773-936-3200  
WWW.CHICAGO.EDU



*Trachusa atra* Miki.





TRACHVSA atra.

*Die schwarze Rauh - Biene.*

*TRACHVSA atra*: atra pubescens nitida, abdomine segmentis elevatis, tarsis omnibus flavo pilosis.

Habitat in floribus.

Antecedenti admodum similis sed duplo maior et distincta. Caput transversum atrum nitidum, atro villosum. Oculi diffusi fusci. Antennae breves nigrae. Thorax ater nitidus hirtus. Abdomen ovatum atrum nitidum, dorso subcalvo, segmentis praesertim anterioribus elevatis. Pedes nigri, mutici in utroque sexu: tarsi flavo pilosi. Alae nervis fuscescentibus. Corpus subtus atrum nitidum pubescens. Femina in regione genitalium tentaculis flavis uncinatis insignis.

a Magnitudo naturalis. b Eadem aucta. c Vltimum abdominis segmentum feminae, cum tentaculis flavis uncinatis.





*Nomada lateralis* Mas Mithi.



NOMADA lateralis. Mas.

*Die seitwärts gefleckte Trauerbiene. Das Männchen.*

*NOMADA lateralis*: atra nitida pubescens, abdomine rufo, segmento secundo tertioque macula utrinque, laterali, reliquis margine postico pallide flavescens.

*Schäffer* Icon. Inf. ratisbon tab. 50. fig. 10.

*Panzer* Nomenclat. d. Schöff. Inf. n. 10. p. 67.

Legi in salicum amentis et in floribus compositis, regione fabulosa.

Caput atrum minus nitidum albido pubescens, labio mandibulisque flavis, his apice fuscis. Antennae subtus et apice rufae, articulo primo longiori penitus nigro. Thorax ater opacus albido pubescens, puncto ante alas calloso flavo. Scutellum semper (*in mare*) immaculatum. Abdomen ovatum subglabrum nitidum, seu tenue pube sericea vestitum, rufum, articulo primo basi macula integra nigra, secundo macula utrinque pallide flava maiori, quae eadem in tertio, vel magis minori oblongiuscula: reliqua segmenta postice pallide flavo marginata. Pedes omnes rufi: femora media et postica tantum nigra. Alae albae apice parum fuscescentes, nervis flaveolis.

a Magnitudo naturalis. b Eadem aucta.





*Nomada lateralis* Tem. Mihi.





NOMADA lateralis. Femina.

*Die seitwärts gefleckte Trauerbiene. Das Weibchen.*

*NOMADA lateralis*: atra nitida pubescens, abdomine ruto, segmento secundo tertioque macula utrinque laterali, reliquis margine postico pallide flavescens. *Schaeffer* Ic. Inf. ratisb 1, c.

Legi quotannis cum mare, haud semel in copula.

Differt femina a mare, statura obesiori, antennis supra et subtus rufis, articulo primo longiori semper penitus nigro. Scutello punctis duobus ordinariis elevatis rufis: thorace, ante punctum callosum, ante alas, alio puncto utrinque laterali elevato flavo: abdominis segmenti primi macula nigra baseos saepius apice tripartita, nec integra ut in mare: segmento secundo macula laterali eadem flava ac in mare, reliqua flavedine multum obsoletiori; segmento penultimo macula dorsali subquadrata flava: femoribus nec adeo nigris, ut in mare, apice rufescentibus.

a Magnitudo naturalis. b Eadem aucta.





*Nomada interrupta* Fem. Mili.



NOMADA interrupta. Femina.

*Die unterbrochen gebänderte Trauerbiene. Das Weibchen.*

*NOMADA interrupta*: Faun. Inf. germ. LIII. 24.

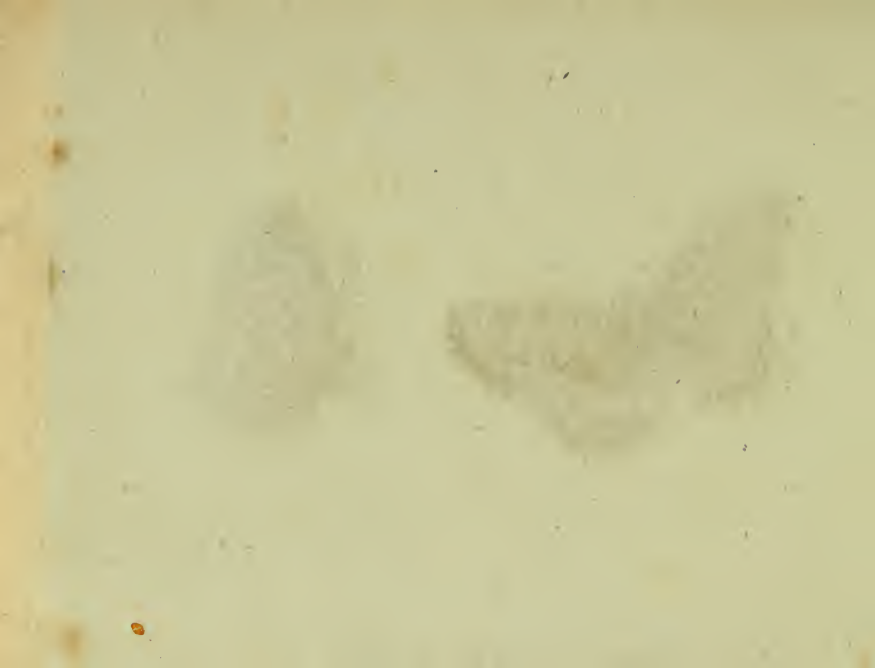
Feminam hic sisto, post haec abs. me haud semel cum mare in Faun. Inf.  
l. c. delineato, captam.

a Magnitudo naturalis. b Eadem aucta.





*Papilio N. Euphrosine* Fabr.





PAPILIO Nymphalis *Euphrosine*.

*Der Bergveilchenfalter. Der kleine Perlenmuttervogel. Das silberne Halsband. Der Silberflecken. Le Collier argenté.*

*PAPILIO Nymphalis Euphrosine*: alis dentatis fulvis nigro maculatis: subtus maculis novem argenteis. *Fabric. Ent. syst. IV. n. 450 p. 147. Syst. Ent. n. 315. p. 517. Spec. Inf. II. n. 482 p. 111. Mant. Inf. II. n. 597. p. 63.*

*Papilio Nymphalis Phaler. Euphrosine. Linn. Syst. Nat. n. 214. p. 786. ed. XIII, n. 214 p. 2335. Fn. Suec. n. 1069.*

*Verz. d. Wien. Schmett. n. 7. p. 177.*

*Geoffr. Inf. II. n. 11. p. 44.*

*Esper eur. Schmett. tab. 18. fig. 3. tab. 41. fig. 4. tab. 72. fig. 3.*

*Degeer Inf. I. P. II. p. 197. tab. 1. fig. 10. 11.*

Am vordern Rand des linken Vorderflügels auf der untern Seite nimmt man deutlich die Zahl 1071 oder 1150 wahr. Die Verwandlungsgeschichte dieses Falters scheint noch nicht so genau bekannt zu seyn, um sie mit Zuverlässigkeit angeben zu können.





*Papilio S. Cynthia Fabr.*



PAPILIO Satyrus Cynthia.

*Die Cynthia. Die blafsgestreifte Cynthia.*

*PAPILIO Satyrus Cynthia*: alis dentatis nigris fulvo flavoque fasciatis, posticis  
subtus fulvis flavo fasciatis. *Fabric.* Ent. Syst. IV. n. 786. Mant. Inf. II.  
n. 574. p. 59.

*Syst. Verz. d. Wien. Schm.* n 3. p. 179.

*Esper* eur. Schm. tab. 37. fig. 2. a. b. c.

*Naturforsch.* XII. tab. 2. fig. 1—3.

*Borkhaus.* eur. Schmett. I. n. 10. p. 59.

Die Raupe, welche auf dem spitzigen Wegerich gefunden wird, lebt gefell  
schäftlich, und wird öfters an den Stämmen der Eichen sitzend gefunden. Sie  
kommt im Herbst aus dem Ei, und überwintert als Raupe. Die Chrysalide ist  
stumpf, von Farbe weiß, und gelblicht mit blau gefärbt und schwarz gefleckt.  
Der Falter kommt in vierzehn Tagen bis drey Wochen aus der Chrysalide. Er  
liebt lichte, grasigte und blumenreiche Waldungen. *Borkhaus.*

