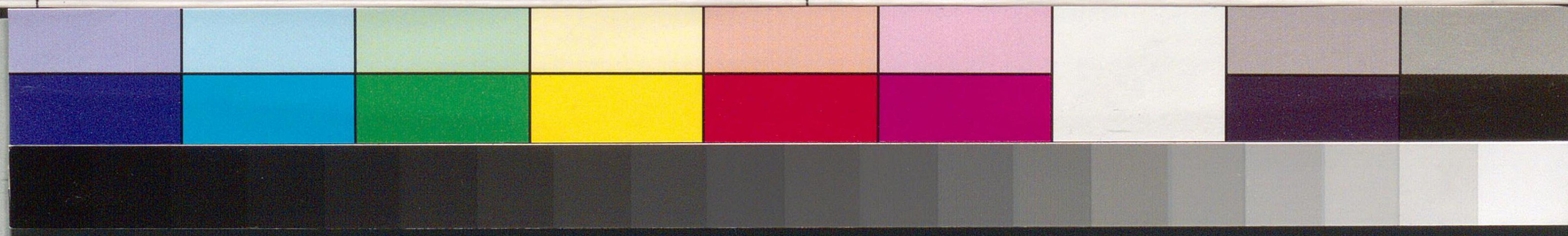
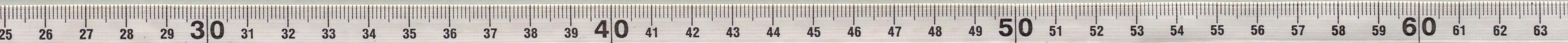


Handwritten Japanese text on a piece of aged, yellowish paper. The text is written in a cursive style (sōsho) and is oriented vertically. The characters are dark ink and appear to be a mix of kanji and hiragana. The paper shows signs of wear, including creases and discoloration.



国立国会図書館 尾崎三良関係文書 73-3

丹上野山

若野山

梅舟

如石

中野

中野

三良

尾崎

