



California's Natural Wildlands Legacy

San Joaquin Valley

Bureau of Land Management California

The San Joaquin Valley is the heartland of California and the state's top agricultural producing region. Encompassing the southern portion of the great Central Valley, the San Joaquin Valley stretches from Sacramento County south to Kern County. To the east are the Sierra Nevada Mountains and to the west the California Coastal Mountains. It is the third most populous region in California.

The Carrizo Plain National Monument is the largest remaining remnant of the once vast grasslands of the Central Valley. Over 204,000 acres of federal land make up the Monument, a diverse complex of critical habitats for endangered and threatened species and the location of significant archaeological and historical resources. With the population of the San Joaquin Valley projected to triple in the next 40 years, this area is becoming an even more important part of California's natural heritage.

The Cosumnes River is the last undammed, free-flowing river in the Central Valley. It also provides a critical habitat for migrating birds along the Pacific flyway. The 37,000-acre Cosumnes River Preserve was established to preserve and protect valley oak forests and Central Valley wetlands, and has evolved to protect and restore segments of the entire 80-mile river. BLM is responsible for coordinating site management for the landowning partners of the Preserve.

The kit fox, one of the endangered and threatened species at the Carrizo Plain National Monument



Preserving Rare Resources:

On the Carrizo Plain National Monument:

- Evidence of the first human occupants at Painted Rock.
- Habitat for sandhill cranes, curlews, silts, mountain plover and raptors.
- Outstanding geological study area focusing on the San Andreas Fault and its information to help scientists better understand earthquakes.
- One of California's largest undisturbed alkali wetlands providing information important to agriculture and climatological studies.
- World class paleontological sites provide important research information.

On the Consumnes River Preserve:

- Among the largest remaining valley oak and riparian forest sites in California.
- Habitat for more than 200 bird species, including some listed as threatened or endangered.
- Accessible river recreation area for Central Valley residents, including Sacramento and Stockton.

Meeting Energy Needs:

Most of California's oil and gas production takes place in the San Joaquin Valley. California is first in the nation in oil produced from BLM-administered leases, with those leases accounting for 10 percent of the state's total production. The Bakersfield Field Office oversees 35 "giant" oil fields, including four of the state's largest. A significant issue is management of the 2,650 abandoned and idle wells on BLM-administered lands.

Partners Against Weeds

BLM is working with other agencies and several interest groups in developing invasive weed management plans up and down the valley. Technical support and expertise is being provided to regional watershed planning groups for systems such as the Panoche-Silver Creek and Arroyo Passajaro watersheds.



"For me, a landscape does not exist in its own right, since its appearance changes at every moment; but the surrounding atmosphere brings it to life - the light and air which vary continually"

Claude Monet



Your lands....Your legacy!



Covering about 250,000 acres, the Carrizo Plain National Monument is managed for the benefit of rare and endangered plants and animals, as well as cultural values.



The Cosumnes River, the Central Valley's last undammed river, is a critical stop on the Pacific flyway for migrating birds and wintering waterfowl.



As the nation's largest producer of crude oil from federal lands, BLM faces the challenge of balancing the demands of the petroleum industry with the preservation of the remaining natural habitat.

Goals for the San Joaquin Valley

Enhance and restore areas of the last remnants of habitat in the valley. This includes saltbrush scrub and grasslands, creating wildlife corridors, and benefiting endangered species.



Partnerships

The Nature Conservancy

U.S. Fish and Wildlife Service

California Department of Fish and Game

County Governments

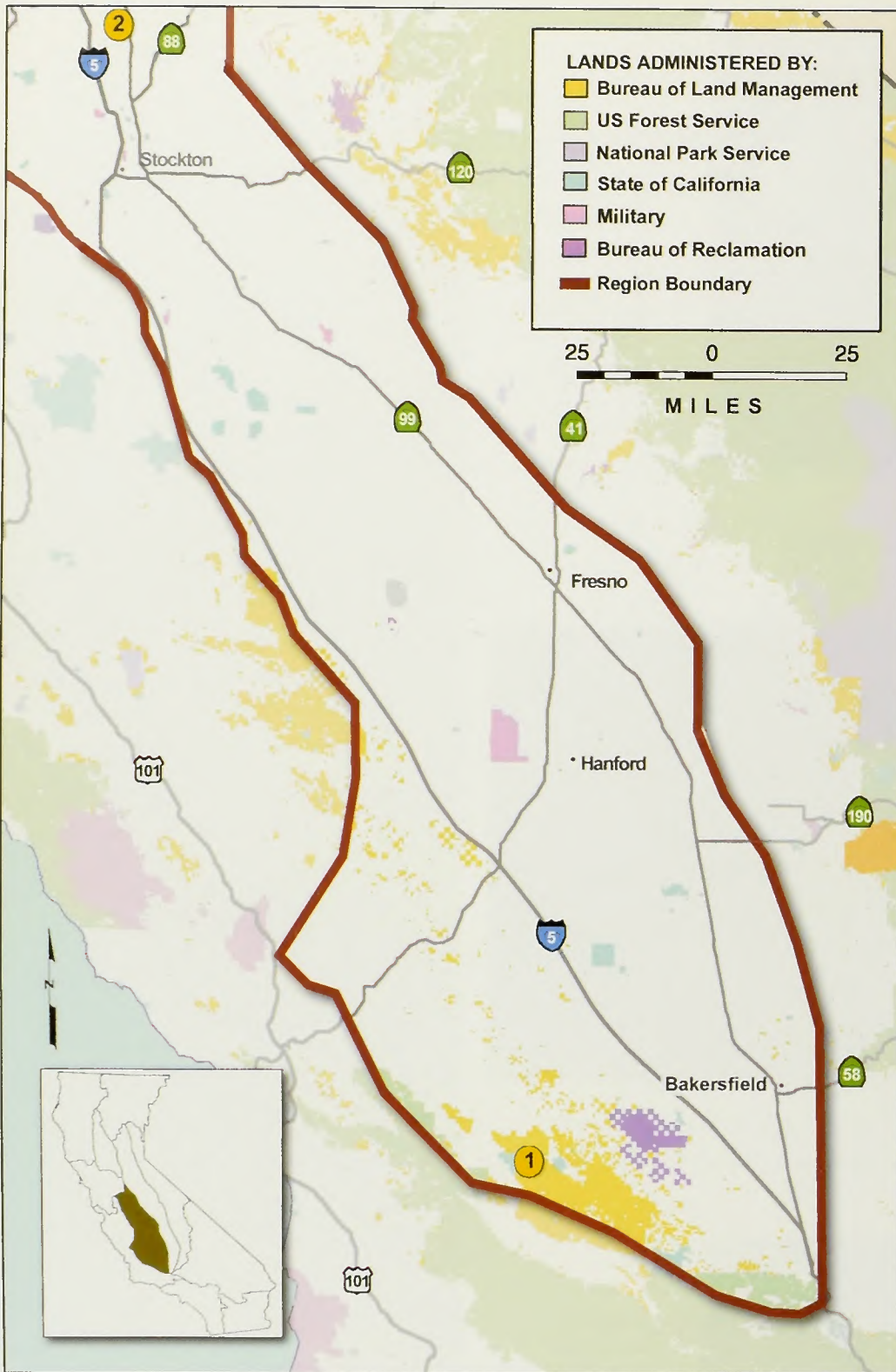
Oil and Gas Stakeholders

California Wildlife Conservation Board



Key Assets of the San Joaquin Valley

- Consumnes River Preserve
- Carrizo Plain National Monument
- Important Oil and Gas Leases
- Threatened & Endangered plants and animals



- 1 Carrizo Plain National Monument
- 2 Consumnes River Preserve

San Joaquin Valley



U.S. Department of the Interior
Bureau of Land Management
www.ca.blm.gov

California State Office
2800 Cottage Way Suite W1834
Sacramento, CA 95825
Tel: 916.978.4400

Bakersfield Field Office
3801 Pegasus Drive
Bakersfield, CA 93308
Tel: 661.391.6000

Folsom Field Office
63 Natoma Street
Folsom, CA 95630
Tel: 916.985.4474

BLM LIBRARY
BLDG 50, ST-150A
DENVER FEDERAL CENTER
P.O. BOX 25047
DENVER, COLORADO 80225