

RG 331, National Archives and Records Service

Allied Operational and Occupation
Headquarters, World War II

SUPREME COMMANDER FOR THE ALLIED POWERS

Assistant Chief of Staff, G-2
Public Safety Division
Police Branch
Subject File
1945-52

Communist Activities to Examination Paper

Box No. 329

(Compiled by *National Diet Library*)

SE
J. Q.

GHQ/SCAP Records (RG 331, National Archives and Records Service)

Description of contents

(1) Box no. 329

(2) Folder title/number: (1)
Communist Activities

(3) Date: ?

(4) Subject:

| Classification | Type of record |
|----------------|----------------|
| 333 | r |

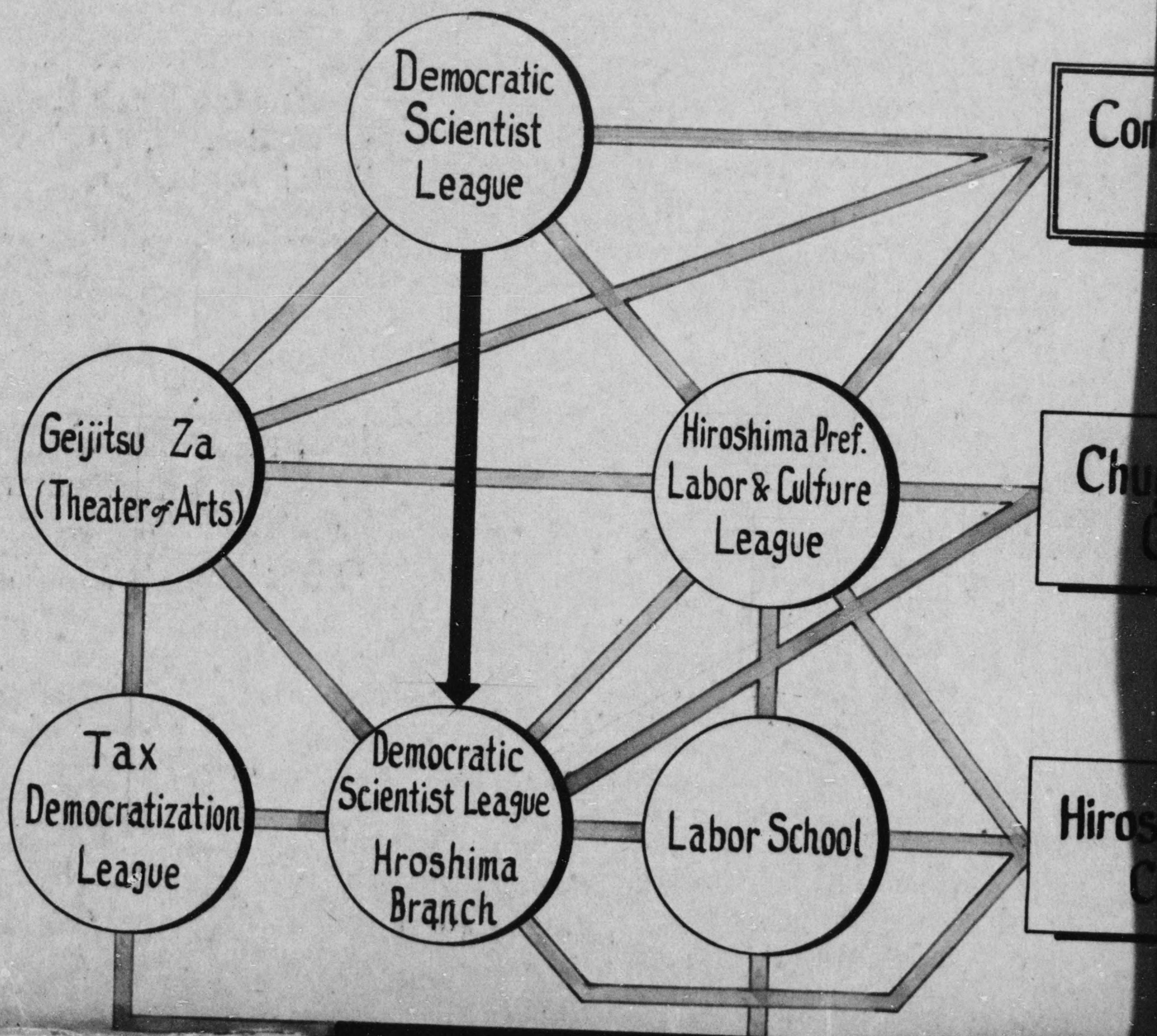
(5) Item description and comment:

(6) Reproduction: Yes No

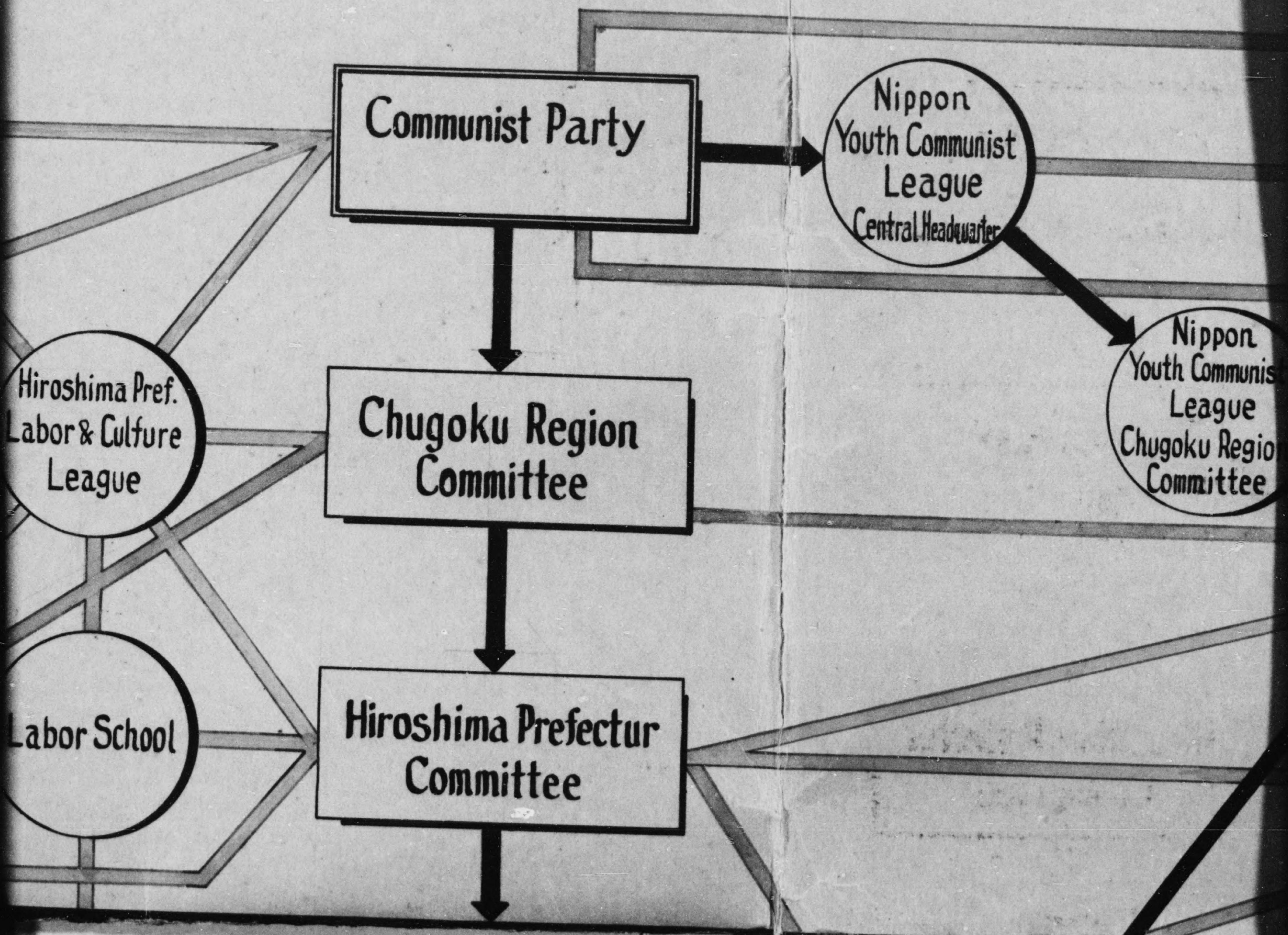
(7) Film no. Sheet no.

(Compiled by *National Diet Library*)

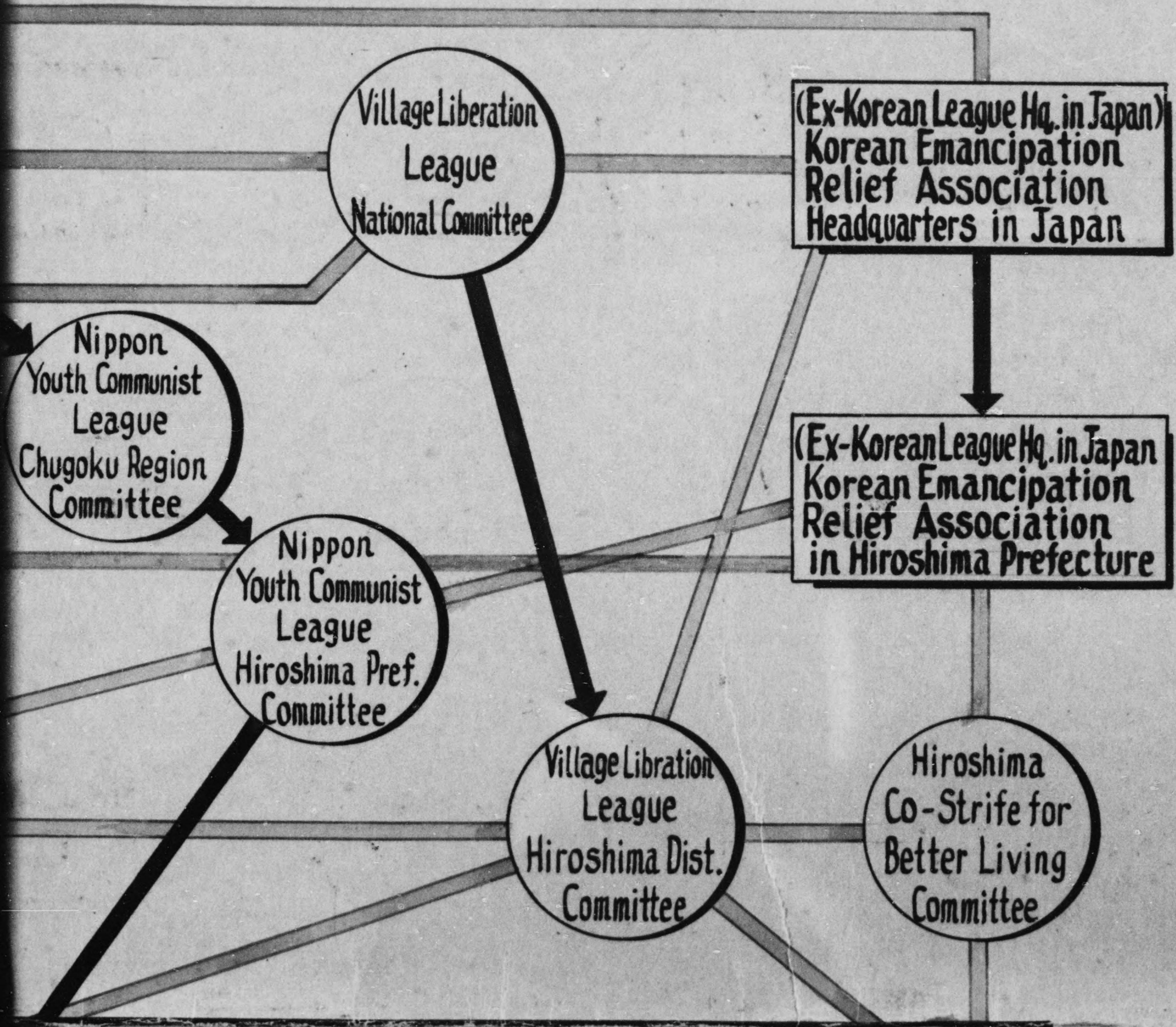
Communis

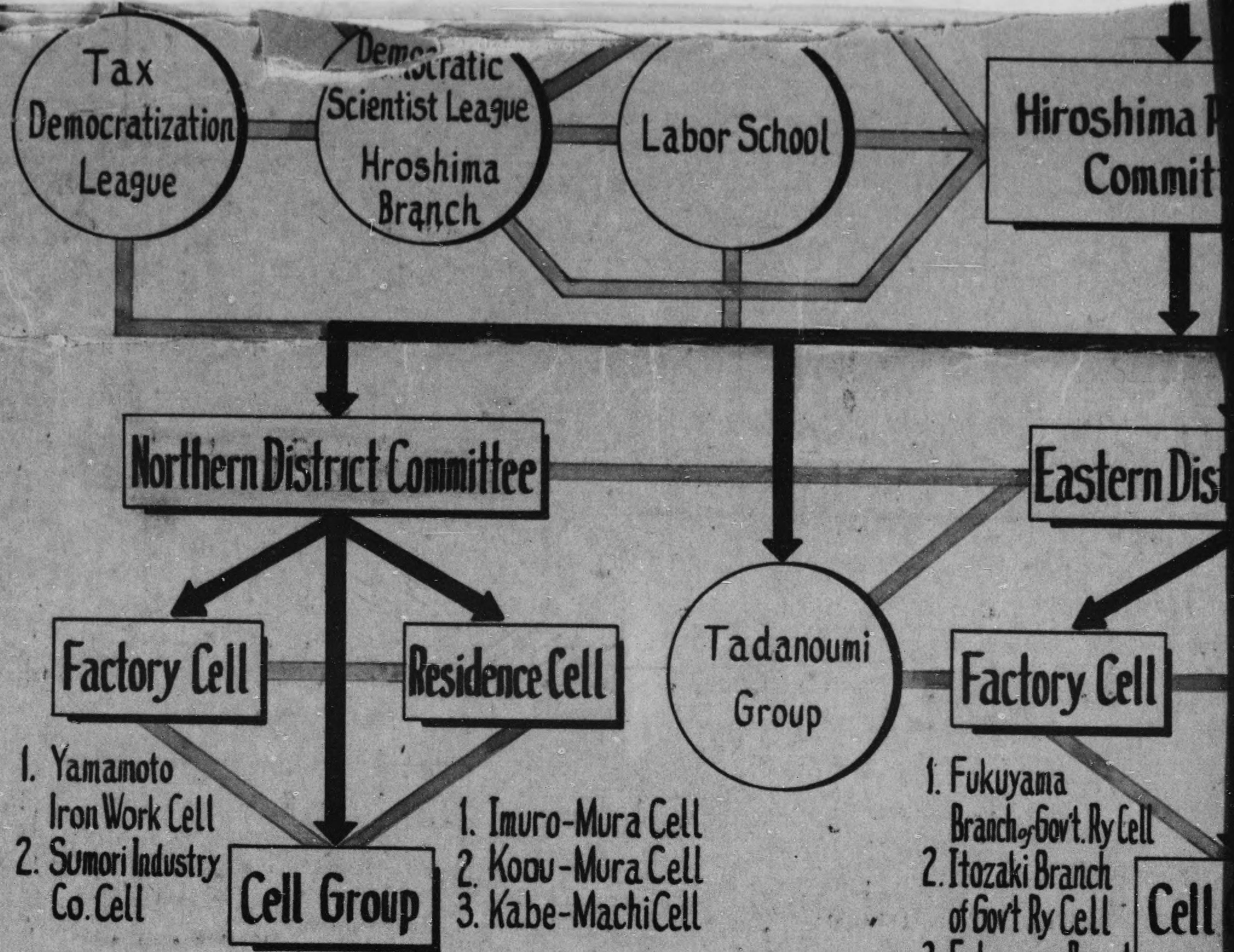


Communist Party Organizational Chart



ation Chart

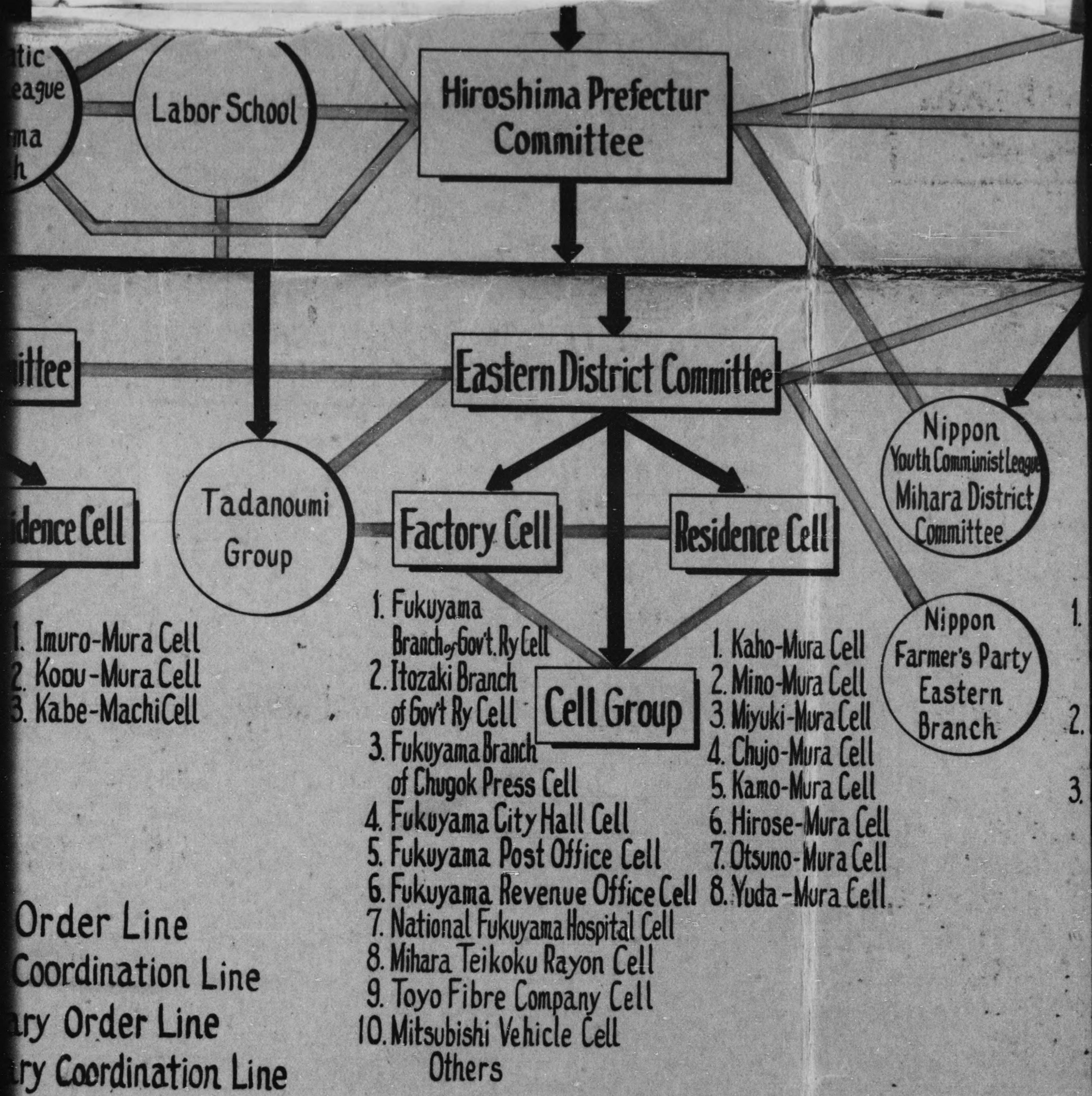




Explanation {

- Direct Order Line
- Direct Coordination Line
- Subsidiary Order Line
- Subsidiary Coordination Line

- 1. Fukuyama Branch of Gov't Ry Cell
- 2. Itozaki Branch of Gov't Ry Cell
- 3. Fukuyama Branch of Chugok Press Cell
- 4. Fukuyama City Hall C
- 5. Fukuyama Post Office
- 6. Fukuyama Revenue O
- 7. National Fukuyama Hospi
- 8. Mihara Teikoku Rayon
- 9. Toyo Fibre Company
- 10. Mitsubishi Vehicle Cell
- Others

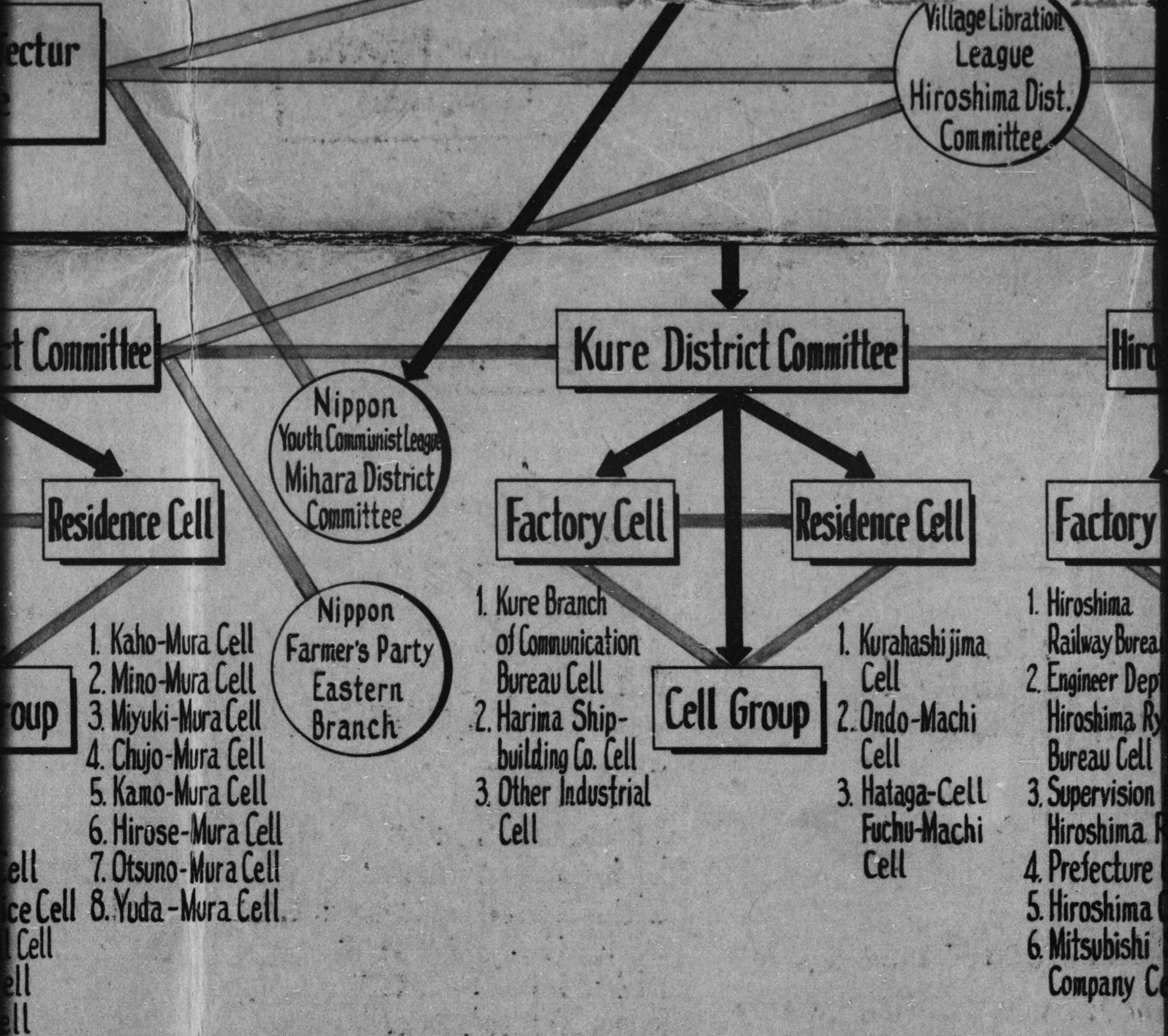


- 1. Imuro-Mura Cell
- 2. Koou-Mura Cell
- 3. Kabe-Machi Cell

- 1. Fukuyama Branch of Gov't Ry Cell
- 2. Itozaki Branch of Gov't Ry Cell
- 3. Fukuyama Branch of Chugok Press Cell
- 4. Fukuyama City Hall Cell
- 5. Fukuyama Post Office Cell
- 6. Fukuyama Revenue Office Cell
- 7. National Fukuyama Hospital Cell
- 8. Mihara Teikoku Rayon Cell
- 9. Toyo Fibre Company Cell
- 10. Mitsubishi Vehicle Cell
- Others

- 1. Kaho-Mura Cell
- 2. Mino-Mura Cell
- 3. Miyuki-Mura Cell
- 4. Chujo-Mura Cell
- 5. Kamo-Mura Cell
- 6. Hirose-Mura Cell
- 7. Otsuno-Mura Cell
- 8. Yuda-Mura Cell

- 1.
- 2.
- 3.



Village Liberation League
Hiroshima Dist. Committee

Hiroshima Co-Strife for Better Living Committee

Kure District Committee

Hiroshima District Committee

Factory Cell

Residence Cell

Factory Cell

Residence Cell

Cell Group

Cell Group

- 1. Kurahashi jima Cell
- 2. Ondo-Machi Cell
- 3. Hataga-Cell Fuchu-Machi Cell

- 1. Hiroshima Railway Bureau Cell
- 2. Engineer Dept. Hiroshima Ry. Bureau Cell
- 3. Supervision Dept. Hiroshima Ry. Bureau Cell
- 4. Prefecture Gov't. Cell
- 5. Hiroshima City Hall Cell
- 6. Mitsubishi Shipbuilding Company Cell

- 1. Ujina Cell
- 2. Midorimachi Cell
- 3. Senda-Machi Cell
- 4. Danbara Cell

Branch Communication Bureau Cell
Hiroshima Shipbuilding Co. Cell
Industrial