

AIRPORT DIAGRAM

AL-474 (FAA)

TRI-CITIES (PSC)
PASCO, WASHINGTON

ATIS 125.65
 TRI-CITIES TOWER 135.3 323.3
 GND CON 121.8
 CLNC DEL 120.0

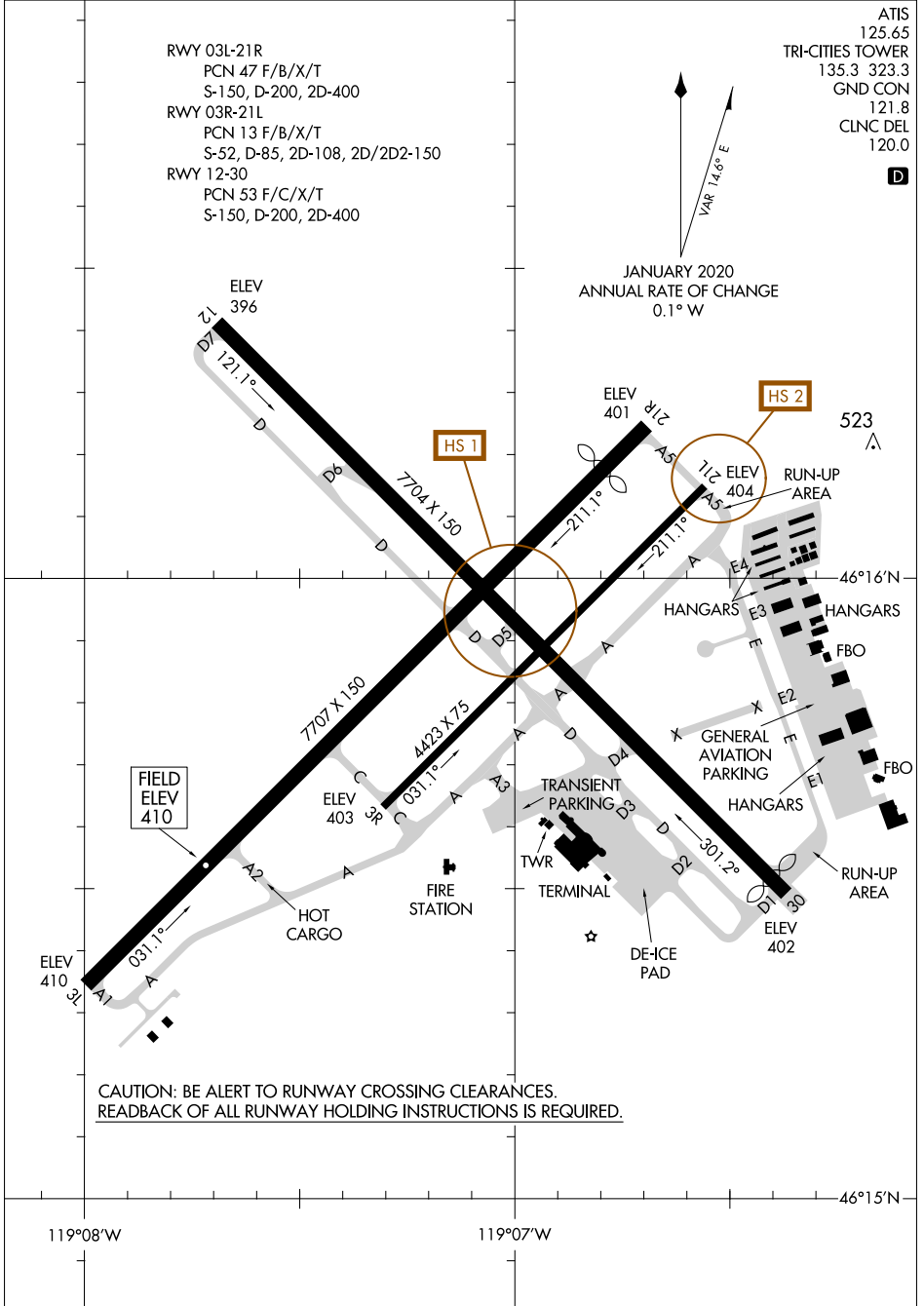


RWY 03L-21R
 PCN 47 F/B/X/T
 S-150, D-200, 2D-400
 RWY 03R-21L
 PCN 13 F/B/X/T
 S-52, D-85, 2D-108, 2D/2D2-150
 RWY 12-30
 PCN 53 F/C/X/T
 S-150, D-200, 2D-400

JANUARY 2020
 ANNUAL RATE OF CHANGE
 0.1° W

NW-1, 28 JAN 2021 to 25 FEB 2021

NW-1, 28 JAN 2021 to 25 FEB 2021



CAUTION: BE ALERT TO RUNWAY CROSSING CLEARANCES.
 READBACK OF ALL RUNWAY HOLDING INSTRUCTIONS IS REQUIRED.

AIRPORT DIAGRAM

PASCO, WASHINGTON
TRI-CITIES (PSC)