

Historic, Archive Document

Do not assume content reflects current scientific knowledge, policies, or practices.

STARK TREES SHRUBS & SEEDS

INDEX.

LIBRARY
RECEIVED
★ SEP 17 1929 ★
U. S. Department of Agriculture

1929 (2nd ed.)

GOLDEN DELICIOUS
on a 3 Year Tree

STARK BRO'S
LOUISIANA, MO.

OVER
114 YEARS
OLD

STAYMARED

Stark DOUBLE-RED
STAYMAN WINESAP
Trade Mark Reg.

Red all over
No scald

STAYMAN WINESAP
Average Color



Owned & Sold
Only by
Stark Bro's

STAYMARED—the NEW
"Double-Red" Stayman



Left) Stayman Winesap. (Right) STAYMARED, our sensational NEW "Double-Red" Stayman. Deep, rich, solid red all over, preventing Scald. Every apple on tree Extra Fancy Color. Far more valuable than regular Stayman—will bring much higher prices. Exquisite flavor.

STAYMARED

Stark **DOUBLE-RED**
STAYMAN WINESAP

Trade Mark Reg.

(Pronounced Stay-ma-red)

-A Super Stayman

A Worthy Companion for
Starking and Golden Delicious

THIS is the most sensational announcement made in horticultural history since that famous bud sport, Starking, the "Double-Red" Delicious, was introduced to the world by us some years ago.

Staymared, like Starking, is a bud-sport. It originated in the celebrated Moomaw Orchard in Virginia. It is a true Stayman Winesap in tree and fruit—except the **Color of the Fruit is a Deep, Blazing RED ALL OVER**, where ordinary Stayman would be red striped and partly green. Every apple on the tree (even on inside, shaded limbs and under sides of branches) glows with this **MARVELOUS SOLID RED**.

Leading orchardists confidently state that **THIS SOLID ALL-OVER-RED COLOR MEANS 100 PER CENT PERFECT EXTRA FANCY GRADE in color—that it assures 30 to 50 PER CENT HIGHER MARKET PRICES—that it will mark the beginning of a new era of bigger, surer profits to apple growers. It will take its place with Starking and Golden Delicious as one of the World's 3 Greatest Apples.**

After several years of exacting tests and careful propagation direct from the **PARENT STAYMARED TREE** in the famous Moomaw Orchards in Virginia, we are glad to announce that, we are now able to furnish Staymared trees to growers alert to this opportunity to add a new source of larger profits to their orchards.



B. C. Moomaw In Whose Orchard Staymared Was Discovered and Original STAYMARED Tree in B. C. Moomaw's Virginia Orchard

The Great Trio of the Apple World—Staymared, Starking and Golden Delicious

Stayman is still a great apple for the home orchard and we recommend it highly for that purpose. For the commercial orchard, however, the Staymared is far to be preferred.

How Staymared Was Discovered

About 5 years ago Hon. W. S. Campfield, Secretary of the Virginia Horticultural Society, wrote us about an amazing Stayman Winesap tree that he had twice inspected in the noted Stayman Orchards of B. C. Moomaw, located in the far famed Shenandoah Valley of Virginia, celebrated for its extra fine Stayman.)

He stated: "This tree is typically Stayman in every way, as to leaf, bark and general shape and the fruit itself is in every particular a high quality Stayman except as to color, which is a most beautiful mahogany Red All Over. Even the fruit on the inside of trees and underside of branches develops color very uniformly—the most beautiful Stayman I have ever seen."

"This color begins to develop in a marked degree 2 to 3 weeks earlier than fruit on surrounding Staymans. The tree stands in low, heavy soil that is not calculated to develop high color."

Expert Sent To Investigate

We commissioned Garland J. Hopkins, nationally known orchardist and apple authority, to visit and investigate. Mr. Hopkins' noted Garland Orchards near Troutville, Va. are known all over the world for their superb Staymans, so he was well qualified to pass expert judgment on this tree and its fruit.

He went as a "doubting Thomas." To him it looked like "going on a wild goose chase." He came away from the Moomaw Orchards bubbling over with enthusiastic confidence that "This new Stayman will entirely supplant the old Stayman and will prove the most popular red apple (except Starking) that has ever been introduced!" He reported:—

"This Tree Is A Real Find!"

"I was never more astonished in my life. **THIS TREE IS A REAL FIND!** I had no idea that there would be such a striking difference in the color of its fruit and that on surrounding Stayman trees. Even the fruit on the shaded inside branches and on the under side of branches showed this same deep, solid red color. I couldn't find a single apple on the whole tree that had even a slightly greenish cast! This Moomaw Orchard has a particularly high-colored block of ordinary Staymans, but even the best of the other trees (even those most thinned) showed a big per cent of greenish or striped apples.

"In manner of growth, foliage, health, vigor and general appearance, this is a typical Stayman tree. The fruit has fine uniform size and the tree is so full a limb as big as my leg has split open. While this new Stayman apple colors earlier, it does not ripen any earlier than the old Stayman, so that it can be picked at the same time.

Better Quality Than Stayman

"The fruit has firmer, harder texture and has actually better eating quality than the old Stayman. The apples stick as tight to the limbs as though tied on with catgut. Furthermore, Moomaw has always kept the fruit from this tree in common storage because it was the best keeping Stayman he had. The lack of keeping quality because of scalding (on poorly colored apples) in storage is the great defect in the old Stayman. It is my guess that the keeping quality of this new apple will be from 2 to 4 months longer than the old Stayman. Its wonderful all-over red color will prevent storage scald.—Garland J. Hopkins.

We Secured Control Of This Tree

With these reports on hand, we sent L. E. Stark down to Virginia for a final judgment. His report agreed with that of Hon. W. S. Campfield and Garland J. Hopkins in every particular. He was very emphatic in his statement that this All-Over Red Coloring habit of this new bud-sport of Stayman "would enable the grower to produce practically all A-grade apples from the standpoint of color!"

Acting on the advice of L. E. Stark and the other Experts, we promptly arranged for the control of all propagation from this remarkable tree—now known as Staymared (pronounced Stay-ma-red), the Stark **DOUBLE-RED STAYMAN WINESAP**.

Will Multiply Grower's Profits

Staymared's deep, All-Over Red Color immediately places a very high percentage of the crop in the Extra Fancy class. This deep, all-over solid red color insures against scalding in storage—solid red apples do not scald. Both facts automatically GREATLY INCREASE THE PROFITS GROWERS OF STAYMARED WILL HARVEST!

Order NOW—Supply Limited

Naturally, our supply of Staymared Apple trees will be limited this, the first year of its introduction. The demand will be GREAT, especially from commercial orchardists. Already we have orders on hand for tens of thousands of this variety—and we urgently advise you to ORDER AT ONCE. Trees will be shipped either this Fall or next Spring.

PRICES ON STAYMARED					
RECORD BEARING	Each	10	100	1000	
1st Class Stark Trees	rate	rate	rate	rate	rate
4 to 7 ft. sizes	\$1.50	\$1.20	\$1.00	\$.80	
3 to 5 ft. "	1.25	1.10	.90	.70	
2 to 3 ft. "	1.00	.90	.70	.60	
Prices F. O. B. Nursery					

Customer must sign Staymared Agreement—or trees cannot be shipped.

DEMONSTRATION ORCHARDS

Not less than 250 Staymared can be sold to one person at these Demonstration Orchard Prices.

250 trees or more--4-7 ft. size--65c each
250 trees or more--3-5 ft. size--55c each
250 trees or more--2-3 ft. size--50c each



Night photograph of one of our two main office buildings

Five Generations of Starks Serve You!

President Stark's PERSONAL Message

It gives me pleasure to again greet you, my good friends and customers throughout America, and beyond. As the years roll by I appreciate with increasing warmth the continued friendship and patronage of hundreds of thousands located all over the world. It is over 50 years ago that I started my apprenticeship here at the nursery. Grandfather Stark, who founded the nursery 'way back in 1816, was still alive then and he put me to work plowing with a bob-tailed mule as my first job. I wrapped grafts and budded trees, dug trees, graded them and planted them, gradually being taught the whole art of the nursery work, under the watchfulness of the old gentleman.

It was hard-sledding in those days. During the Panic of 1873, Father had lost everything that he had in the world, except the Nursery farm, because he had gone on the notes of so many of his friends. I had to go out on the road selling trees and making deliveries.

As I grew to manhood, and after Grandfather and Father had passed on, my brother Clarence and I assumed charge of the nursery. One of the most fortunate things we ever did was to form a friendship and alliance with Luther Burbank, just then beginning to be known to fame. From him we secured the three best plums ever known and paid him \$9,000.00 for exclusive control. In all the years of his life, we have been closely associated with this Master of Plants and from him and other noted Horticulturists and Plant Breeders have secured hundreds of improved strains and new fruits that we introduced to the world, to the great and lasting benefit of fruit growers and fruit lovers everywhere.

Many of the fruits we have introduced have literally revolutionized the fruit industry. For instance, the Stark Delicious apple introduced by us over 30 years ago, has swept the markets of the world. It is now recognized as the one red apple that makes the most money for fruit growers the world over. Every year on every market it brings by far the highest prices, excepting only one apple—Stark's Golden Delicious!

Later on, we brought Stark's Golden Delicious to the attention of the world. We discovered it 20 miles from a railroad on a bleak, mountainside in West Virginia, thriving gloriously and bearing wonderful crops despite the fact that it had never received any care. In a little over a decade, Golden Delicious has become the sensation of the fruit world and is now the most largely planted of all yellow varieties.

More recently we discovered STARKING, the "Double-Red" Strain of Stark Delicious, on a farm in New Jersey. Although it was introduced by us only 4 years ago (after years of test), we are already selling 80 per cent more STARKING trees than we are those of Delicious! This clearly proves that the shrewd fruit growers recognize the fact that STARKING is a big improvement over Delicious.

The introduction of STARKING not only startled all orchardists because it showed deep-red, all over red color in August, while Delicious is still green, but because it opened up an entirely new vista in Horticulture. It demonstrated in a striking manner the great money-value of the Horticultural phenomena known as Bud Sports, which result in new varieties without the usual cross-breeding.

In some way, unknown to mankind, the hand of God touches a tiny fruit bud and it produces a new strain of fruit, different from the other fruit on the same tree. If this difference is very marked (as it is in the case of STARKING) scientists call it a Bud Sport or new variety. If the difference is not so great, it is called a Special Strain.

Because of these differences known as Special Strains and their proven value to fruit growers, it has become recognized by leading scientists and orchardists that the best fruit Orchards can only be obtained by propagating from ONLY the best known Parent Trees of each variety.

Stark Bro's Nurseries, following its 114-Year-Old Policy of giving to orchardists *only the best*, has spent over \$50,000.00 in the last few years to change all our tree propagation over to this Best "Record-Bearing" Parent Tree foundation. We now (and have for some years) propagate only from Parent Trees of each variety of best known record for young bearing, color of fruit, quality of fruit, regular, heavy bearing and hardness. This assures for you, our customers, trees of superior parentage or improved strains,—and because of our huge quantity propagation, does so at no additional cost to you. We sell you "thoroughbreds" at the price of "scrubs."

We trust and believe that our ideas and ideals of Service for you merit your preference for Stark Trees when in need of nursery stock. Personally, I will welcome your patronage and see to it that your order will be given most careful attention. Write me personally for any advice. I am at your command.

E. W. Stark
President, Stark Bro's Nurseries & Orchards Co.



President E. W. STARK

Nurseryman of over Half a Century's experience—Grandson of James Stark, who founded Stark Bro's Nurseries & Orchards Co. in 1816—114 years ago.



MAJ. LLOYD STARK
Vice President and General Manager



PAUL STARK
Treasurer, Sales Manager, Chief Orna. Dept.



CLAY STARK
Asst. Treasurer, Manager Flower, Vegetable Seed Dept.



TOM STARK
Secretary and Sales Manager of Western Division



LAWRENCE STARK
Office Manager and Head of South Eastern Division



EDWIN STARK
Manager of Propagation and Shipping

Stark Bro's "RECORD-BEARING" Strain Trees

It Cost Us Over \$50,000.00 To Change All Our Varieties Over To These Wonderful "RECORD-BEARING" Strains!



ORIGINAL STARK EARLY ELBERTA TREE

Discovered by us in orchard of Dr. Sumner Gleason, noted Utah peach grower. All propagation from this tree is controlled by us through Exclusive Contract. The Parent of all genuine Stark Early Elberta Trees.



ORIGINAL STARK DELICIOUS TREE—the perpetual propagating rights of which we exclusively own and from which we propagate Stark Delicious "Record-Bearing" Original Tree Strain Trees. We discovered it in Iowa.



FIRST BLOCK OF J. H. HALE TREES GROWN

We grew the first nursery crop—13,000 trees—of J. H. Hale in 1911-12. Years before J. H. Hale was generally known. One of these is the Parent of all our trees of this variety.

But—They Will Bring Millions In Extra Profits To Fruit Growers Without Any Increase In Stark Tree Prices

We have always strived after BETTER propagation methods—BETTER Strains—and BETTER varieties. We feel it our DUTY to do so. Those improvements that we have been responsible for in the past Century have helped the fruit growers by giving them Better Fruits and Bigger Profits. In particular, our work in introducing to fruit growers, bud sports (like Starking), and other superior strains, opened the eyes of the fruit world.

Now, after years of investigation and the expenditure of more than \$50,000.00 to change all our varieties over to these "Record-Bearing" Strains, Stark Bro's are supplying nursery stock propagated from the best known Record-Bearing Parent Trees in all America or trees scientifically proved to have positive superior bud variations, bud sport characteristics and the ability to transmit to their offspring these superior characteristics of either high color and earlier color, uniformity of shape and type, greater size of fruit and other characteristics.

All will admit that this is the safest method of propagation to assure the greatest satisfaction and profit to the fruit grower who buys nursery stock. Leading horticulturists and the most successful practical orchardists, in planting their own orchards, prefer to plant trees they KNOW have been propagated from Parent trees of KNOWN Bearing Record. For instance: Prof. Green, for years Chief State Horticulturist of Ohio Experiment Station, stated:

"If I were planting an orchard myself, I would prefer that the nursery stock I used would be propagated from trees of known record."

Moreover, we are supplying these Superior Record-Bearing Strain Trees without one penny increase in the prices to Stark Tree planters.

What Prof. Shamel of U. S. Dept. Agriculture Says:

Prof. A. D. Shamel, in charge U. S. Govt. Fruit Improvement Investigations, is noted throughout the World, as the Foremost Authority on Bud Variation. His work for citrus growers alone saved millions of dollars. Prof. Shamel states:

"The work of searching out such valuable new improvements as your bud sport Starking and other superior variations of standard varieties is of great value to the fruit industry. These improvements in color, size, shape of fruit and increased production, as well as other important characteristics, can unquestionably be reproduced by propagation from these known superior strains. On the other hand, drone or poor bearing strains also occur and careful, intelligent parent-tree selection will eliminate inferior strains from propagation and will result in better fruit and more profit for fruit growers. Our experiments and observations for twenty years have definitely proved these facts, and the fruit growers are realizing more and more the vast importance of obtaining trees propagated from these superior strains."

Remember, it has taken our Staff of Scientific Horticulturists nearly 30 years of continuous work and search to finally arrive at the point where we are able to offer Stark "Record-Bearing" Strain Trees in every variety. Growers should, therefore, be very cautious about bogus, so-called "Superior" Strains, offered by those who have not the facilities for the great and costly work and who have not spent years and years in searching out and investigating the records of the Parent Trees from which they propagate.

The Service This Method Renders

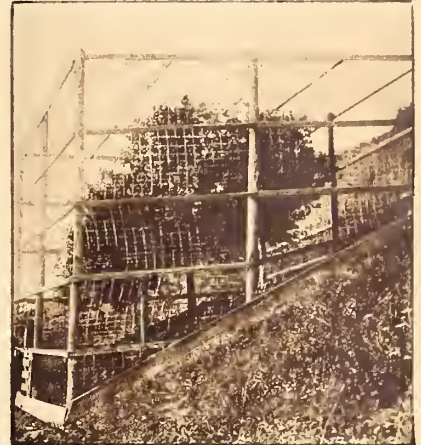
It preserves Superior Colored Strains, like Starking, Staymared, Dark Red Rome Beauty, Double-Red Baldwin, etc. It perpetuates Heavy Bearing types, such as our Record-Bearing Strain of Golden Delicious, Stayman Winesap, etc., and keeps "drone" trees out of Stark Tree Orchards. It protects the typically shaped strains (such as Stark Delicious) from degeneration. It prevents our best varieties from relapsing into degenerate, weak strains and maintains the superior or normal strains—as in the case of our Red McIntosh as compared to the inferior striped strain of McIntosh.

It preserves the habits of heavier yields of better colored fruit, ideal shape, larger size and other characteristics, and thus—assures better crops and better profits to the growers who plant Stark "Record-Bearing" Strain Trees.

From our Nursery standpoint, it does, as far as humanly possible, eliminate errors in propagation and further assures Trees True-To-Name. And all of this is of vital importance from YOUR standpoint.

Every Farmer Knows This Fact

Every farmer and stockman now knows that he makes bigger crops from superior seed, gets finer stock from thoroughbred parents, and while trees are not the product of two parents, their propagation from a Stark "Record-Bearing" Strain Parent Tree is of vast importance to the man who wants assurance of a reliable source of the best fruit trees, and the biggest profits.



ORIGINAL GOLDEN DELICIOUS TREE—which we own (having paid \$5,000.00 for this tree) and from which we propagate Golden Delicious "Record-Bearing" Strain Trees. We discovered it in West Virginia, 20 miles from a railroad.



THE PARENT STAYMARED TREE Discovered by us in Virginia. Bears marvelous crops of SOLID RED apples; that color ALL OVER 2 to 3 weeks before old Stayman begin to color.



THE ORIGINAL STARKING LIMB—which we own (having paid \$6,000.00 for this limb and the tree) and from which we propagate STARKING "Record-Bearing" Strain Trees. We discovered it in New Jersey.

OLD OAK PROCESS Whole Root Trees

Trade Mark Registered U. S. PATENT OFFICE

Grown ONLY BY STARK BRO'S

"OLD OAK PROCESS Whole Root Trees" is a Trade-Mark, registered in the U. S. PATENT OFFICE and owned by Stark Bro's. It denotes the Superior Whole Root Trees produced by our Over-a-100-Year-Old Nurseries. Stark Bro's is the only nursery in the world that can supply genuine Old Oak Process Whole Root Trees.

Charles Downing, than whom no higher fruit authority has ever

lived, said:—"Large quantities of trees are propagated by using pieces of roots. This practice considered as tending to debilitate and reduce vitality—the seat of vital life in fact resting in the Natural Crown (the point where wood cells blend into root cells) and that once destroyed cannot be renewed. But one healthy, permanent tree can ever be grown from a single seedling stock."

A Whole-Root Tree is "Worth the Price of 10 Piece-Root Trees"

Naturally, our trees cannot be sold at "Bargain Prices"—though ours are most reasonable prices, because by growing millions we reduce costs and also improve the quality. These OLD OAK PROCESS Whole Root Trees develop into big, husky, fast-growing, young-bearing fruit trees, and usually live twice as long as ordinary trees. As you know, the roots are the "feeders"—the foundation of a tree.

If the tree is grown from a whole root, it has more roots, of course. Therefore, it has more roots to FEED WITH. These trees will quickly extend their root systems downward in all directions—take firm grip on the soil—eagerly suck up strength—shoot upward like a healthy out-doors boy—come into bearing young and live and bear big crops long years after "cheap," weak, piece-root trees have died and been cut up for kindling.

All Stark Trees Are "Born" in Our Famous Selected Scion Orchards

In these orchards, we practiced "bud selection" for generations before that branch of horticultural science became known to horticulturists in general.

In our propagating orchards, trees are propagated (grown) from selected, heaviest bearing, healthiest, youngest bearing, highest colored RECORD-BEARING Strain Trees.

Only the BEST are given place. Diseases and tree faults and flaws are absolutely kept out of our orchards.

These Propagating Orchards contain a collection of Superior Record-Bearing Strains of all leading varieties collected for over half a century from every section of American and Foreign Countries. No such complete collection of Improved Strains exists anywhere else on earth—all Stark RECORD-BEARING Strains.

This is an expensive practice, to be sure.

But, without it, we could NOT be SURE and YOU could NOT be SURE that our varieties were of the most profitable big Record-Bearing Strains and were absolutely TRUE TO NAME. It is cheaper in the long run, for BOTH of us to be SURE.

In Propagating orchards, all buds and scions are cared for as watchfully as though they were diamonds.

Every tree is labelled. Each variety is given special attention by experts who KNOW how to induce the trees to produce VIGOROUS scions and buds. Then—those scions and buds are cut only by men of 10 to 30 years' experience—men to whom the good name of Stark Trees is as dear as it is to any of the Stark family—tried and true and trusted men. Scions and buds of only one strain are cut at a time by each one of these experts. Mixing is made almost an impossibility. This takes time, of course—and time means money. But—it is all done to PROTECT YOU—and our good name.

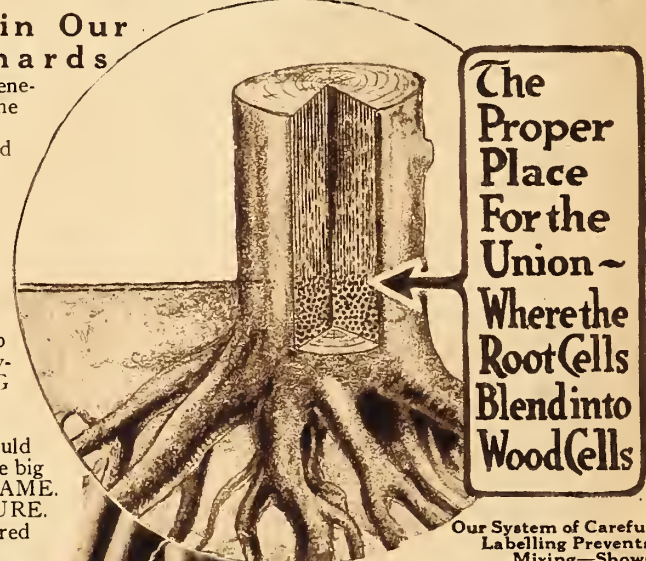
Our Whole Root Grafts

are made with our own Special Patented Electric Graft Wrapper. (See photo in oval below.) It avoids all the errors of old-fashioned handwrapping—makes a tight, compact wrap, and assures a perfect union of root cells and woodcells (see photo in circle above—at right) and produces a tree without blemish, and one that will make quick growth in nursery row and orchard.

The Remarkable Roots of Stark Bro's PATENTED Trade Mark Whole Root Trees

Our Patented Electric Graft Wrapper.

Assures Perfect Union Strong Trees



The Proper Place For the Union—Where the Root Cells Blend into Wood Cells

Our System of Careful Labelling Prevents Mixing—Shows at a Glance the Variety Grafted.

OLD OAK PROCESS WHOLE ROOT GRAFTS

These careful Stark Processes require facilities and an organization that the smaller nurseries cannot command.



Plant Best Trees To Get Best Crop Profits!



"Our Apples Bring Double Price of Others"

Don E. Minor, Kent Co., MICH., sends in above photo saying: "We have 1,000 Stark trees. Wish we had planted 10 times as many. Their apples sell readily for **DOUBLE** the prices others bring."



5 Acres Yield \$9,200 In 4 Years

Chas. Taylor, Sullivan Co., N. Y. (see photo above) Stark Delicious Specialist, reports \$9,200.00 profit crops from 5 acres in last 4 years. This was done on "abandoned farm" land for which he paid only \$40.00 an acre.

A Good Orchard Pays 3 Times As Much As A Farm

E. S. Walker, Belknap Co., N. H., owns 3 acre orchard that he says "pays 3 times as much as farm crops." He raises Stark Delicious, Yellow Transparent, Liveland Raspberry, etc., apples that have averaged \$300.00 to \$500.00 per year from his little orchard. His apples have taken prizes at New England Fruit Show and New Hampshire Horticultural Society Exhibitions. Best crop he ever had was 16 barrels from a single Stark Tree.

3,000 Barrels From 20 Acres

Rev. E. M. McCollum, Minister of Henderson Co., Ky., reports, because of failing health, he retired to a farm, part of which was planted to 1,500 young Stark Delicious, Winesap, Stayman Winesap apple and Alton, Elberta, Heath Cling and Krummel October peach trees. Has 20 acres bearing orchard that produced 3,000 barrels (150 barrels to the acre) in one crop, one tree alone in one year producing \$135.00 worth of fruit. He says, "When it comes to profit, no other line of farming can compare with fruit raising."

\$6,236.00 From 3 Acres Trees

A. A. Graham, owner of Mapleton Fruit Farm, Union Co., Ind., reports that his health became poor while he was teaching school and that he started his fruit and poultry farm "on the side," to get outdoor exercise. Three acres of apples brought him \$6,236.00 for the last five years. The land cost him \$100 without trees and now is worth \$500 per acre with trees.

Orchard Pays 10 Times As Much As Corn or Cotton

Arthur H. Thompson, Lee Co., Arkansas, formerly in cotton and lumber business, reports that he has been raising fruit for ten years. His leading varieties have been Stark Delicious, Stark King David, Black Ben and Stayman Winesap. Also has a block of young Golden Delicious. Single Stark Delicious and King David trees on his place have yielded him as much as 25 bushels in a year. He writes: "My orchard has paid me ten times more per acre than anything else such as corn or cotton."

Pays Better Than Cattle Raising Or Grain Growing

Adolf Lurksdorf, Lane Co., Ore., bought 10 acres, planted it to Stark Delicious, Stayman Winesap and Grimes—and sold it just coming into bearing for 5½ times amount he paid for it. He is now planning an orchard of 90 acres which he will plant to Stark Delicious (30 per cent), Grimes Golden (30 per cent), Golden Delicious (30 per cent), and Stayman Winesap (10 per cent). He declares: "Orcharding pays better than either cattle raising or grain growing. It is clean work and profitable."



10 Year Old Stark Tree Bears 15 Bushels

John Barclay, Cranbury, N. J., in sending in above photo, stated: "Stark Delicious is one of my youngest bearers and bears every year. Sell for 50 per cent more than others. I have 350 Stark Delicious and if planting another orchard would make it All Stark Delicious."



40 Acres Bring \$15,000 Yearly

Jas. Sharpe (former R. R. Fireman) Morris Co., KANS. (See photo above) is a Stark Tree planter and has sold \$15,000.00 worth of fruit each year for last 3 years from 40 acres of orchard. He says: "There is more money in a Stark apple orchard than in an orange grove in California or Florida!"



\$50,000 Crop From 40 Acres

Photo above is one of big block Stark Red Delicious in Buck Bros. Orchards, Elberfield, IND. They sold their Stark Red Delicious for \$12.00 per barrel and this price aided Buck Bros. to get \$50,000.00 crop from 40 acres!



Bore 2½ Bushels at 3½ Years!

Photo above shows 3½ year old Stark's Golden Delicious in A. B. Hilty's orchard, Putnam Co., OHIO. He says: "ALL my Stark's Golden Delicious are bearing this year—some with 8 to 12 apples per foot of limb."

Apples—Listed in Order of Ripening

The apples listed here are the best of over 5,000 known varieties—those starred thus (*) are best.

EARLY SUMMER

- *Early Red Bird
- *Henry Clay (Trade-mark)
- Yellow Transparent
- Early Harvest
- Liveland Raspberry
- Sweet Bough

SUMMER

- **"Double Red" Duchess
- Early McIntosh
- *Wilson Red June
- **Summer Champion
- *Jefferies Red
- Maiden Blush

FALL APPLES

- *Gravenstein, Crimson Red
- *Wealthy
- *Imperial Rambo
- *Mother

EARLY WINTER

- Fameuse (Snow)
- N. W. Greening
- *McIntosh, Red Strain
- R. I. Greening

WINTER APPLES

- Baldwin (Double Red)
- Northern Spy (Double Red)
- Banana (Winter)
- Bellflower, Improved
- Grimes Golden
- **DOUBLE-LIFE GRIMES GOLDEN (Trade-mark)
- *Jonathan
- **Stark King David (Trade-mark)

LATE WINTER KEEPERS

- *Rome Beauty
- **Rome Beauty, Dark Red
- Cortland
- *Senator (Trade-mark)
- York Imperial
- Jeniton (Ralls Janet)
- *Mammoth Black Twig Improved (Gilbert Strain)
- *Paragon Winesap (Gilbert Strain)
- **Stayman Winesap

LATE WINTER KEEPERS

- *Staymared
- Winesap (Virginia Strain)
- *Giant Jeniton (Trade-mark)
- **Stark Red Delicious (Trade-mark)
- **GOLDEN DELICIOUS (Trade-mark) (owned and sold only by us)
- Willow Twig
- *Black Ben (Trade-mark)
- **STARKING (Trade-mark) (Owned and sold only by us.)

STARKING — The Sensational NEW "Double-Red" Delicious

Actual Size
of Average
Starking
Apple



Typical
Starking
Apple Grown in
Orchard in
Middle West

A Late
Keeping
Winter-Apple

Knowing of our constant search for improved strains of fruit trees, a noted Horticulturist told us, some years ago:

"A New Jersey Orchardist has an amazing Stark Delicious tree. One limb of this Stark Delicious tree is loaded every year with apples that get RED ALL OVER IN AUGUST, a month before ripening, when the apples on the other limbs are still green!"

We investigated and some months after bought this tree for \$6,000.00, erected a cage around it for protection and began a series of tests to PROVE that scions cut from that limb would produce trees that would bear apples having that same early-coloring, super-color, double-red characteristic.

During all the years of tests and inspections by scores of State Horticulturists, Pomologists, noted fruit Growers and our own experts, STARKING exceeded the "rosiest" expectations of all of us—has performed in such a way that it has convinced every State and National Horticulturist who has seen the Original Tree and the succeeding generations of STARKING trees, that it is a true bud-sport. As Prof. Joseph Oskamp, New York State Exp. Pomologist says: "There is no question whatever about its retaining this all-over-red color when propagated, because the fruit on the young STARKING trees in same orchard were even deeper red than apples on the sport limb."

Luther Burbank and U. S. Pomologist Close Enthusiastically Endorse STARKING

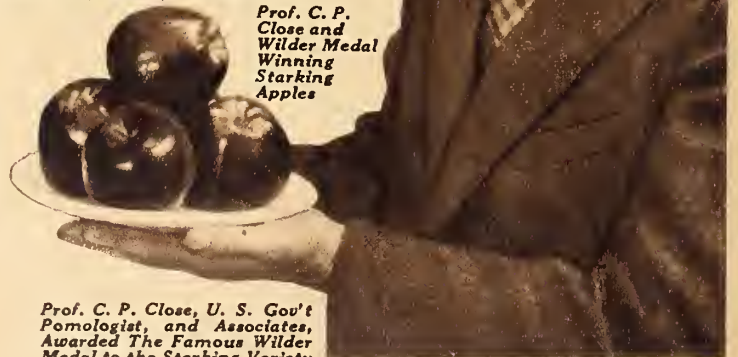
Burbank Said: "You have in this Starking all of the fine characteristics of the Original Delicious with the very valuable addition of earlier color and deeper all-over red. You do not have to test its adaptability—its reputation is already made, because it is simply an improved Delicious and will grow and succeed wherever Delicious succeeds. The more brilliant solid red color will bring higher prices to the fruit grower. Because the fruit colors up much sooner, it can be picked at the proper time, and will thus maintain its juicy quality late in the season, never becoming mealy."

Prof. Close Said: (Prof. C. P. Close is Official Pomologist for the U. S. Dept. of Agriculture). "I am most favorably impressed with this new variety and I believe it will crowd Delicious out of use in time. I was impressed with the fact that the fruit on the original Starking was not only solid red, but was larger and more uniform in size than the apples on the rest of the Delicious tree. The fruit on the young Starking trees was also large and solid red. The particular value of Starking is in the early development of red color which makes it possible to pick the fruit and place it in storage as soon as hard ripe. This will not only lengthen its commercial life, but the fruit will not become mealy."

More Will Grade Out Extra Fancy

"A much larger percentage of Starking will grade Extra Fancy. Starking colors up so uniformly, the percentage will, of course, be greatly increased. Starking will also have better keeping qualities since the apples can be picked when hard-ripe, though red all over. Consequently its life in storage will be materially lengthened." — C. C. Wiggans, Horticulturist, University of Nebraska, Lincoln, Nebraska.

Prof. C. P.
Close and
Wilder Medal
Winning
Starking
Apples



Prof. C. P. Close, U. S. Gov't
Pomologist, and Associates,
Awarded The Famous Wilder
Medal to the Starking Variety



Paul Stark Examining \$6000.00 Limb

We have set out many thousands of STARKING trees in our own commercial orchards because we know that it, as C. D. MATTHEWS, Chief of Division of Horticulture, NORTH CAROLINA, declares: "Will Be a Tremendous Money Maker for Fruit Growers!"



Produces Early Colored All-Over Red Apples on Trees of Succeeding Generations

By years of exacting tests, we have proved that STARKING propagates true to type in succeeding generations! All the noted Horticulturists who investigated the original STARKING tree and also young succeeding generation STARKING trees agree that STARKING is a wonderful horticultural phenomenon—a very rare and valuable occurrence in Nature. The fact that it occurred on only this one limb of the Original Tree proves that it is a TRUE BUD SPORT which Scientists agree will produce fruit true-to-type on trees of Succeeding Generations.

Big Value of Early Coloring

BECAUSE they DO color a beautiful, solid, all-over red, STARKING apples can be picked early—to get the Highest "First-Delicious-on-Market" prices. They can be picked while still hard, crisp, full of juice—and yet a Beautiful Blood Red and will keep until late spring and never get dry or mealy—retaining full juice and crispness.

Even Apples on Shaded and Lower Limbs Get Red All Over In August

Here's the Official Report of The NEW JERSEY Horticultural Society:

"Even the fruit that is shaded on the lower and inner branches develop plenty of red color. Its striking characteristic is that of developing a deep red color when ordinary Delicious is still almost green. It colors at least 2 weeks earlier. The color is a deep almost solid red."

WARNING

As we write this orders for STARKING are pouring in on us in great quantities. STARKING trees can be sold ONLY by Stark Bro's. Those who want to be sure to get STARKING trees should ORDER EARLY.



Young 2nd Generation STARKING Tree
Photo taken in August—with tree bending to ground loaded with big, all-over-red beauties. Delicious Starking

"Starking Bears Years Younger Than Delicious!"

An amazing FACT seems to be developing in the orchards of growers who had the foresight to plant STARKING Trees—STARKING IS BLOOMING AND BEARING SEVERAL YEARS YOUNGER THAN DELICIOUS!

We had noticed this same younger bearing tendency of Starking in our own Experiment Orchards but have conservatively refrained from making any statement regarding this habit of Starking. But—NOW—these reports from so many Starking growers are so convincing that we feel compelled to tell you about this added virtue of this wonderful apple variety. Here are a few typical reports:—

Thomas J. Harwell, well known VIRGINIA orchardist, reports:—"Our 4-yr.-old STARKING trees bloomed this year and now have young apples large as small marbles (in April). They are bearing much younger than 9-yr.-old Delicious!"

Edw. E. Held, INDIANA apple grower, reports:—"There is going to be a good many apples on my 3-yr.-old Starking trees this season."

STARKING a True Bud Sport

Many scientific horticulturists are skeptical of alleged Bud Sports that originate as whole trees. Where it originates as a single limb, they know it to be a true bud sport—one which will always reproduce its valuable characteristics. Prof. U. P. Hedrick, Horticulturist, New York Exp. Sta., says:

"When an entire tree shows the variation, one almost must assume that the variation is due to local soil conditions or to the stock upon which the tree grows. One may feel pretty sure that when a limb of a tree shows a marked variation and continues to show it year after year, it is a bud sport that can be propagated indefinitely."

For Starking Prices, See Page 9.



Striking Difference Between Delicious and STARKING

The pile at left shows Delicious apples picked at same time from trees in same orchard as pile STARKING apples at right. Note difference in color—Starking, red a month before it ripens—Delicious is uncolored.

"Starking Will Be A Tremendous Money-Maker for Fruit Growers!"

This is the statement of Prof. C. D. Matthews, State Hort.

He said, after visiting the Original STARKING tree twice: "I am certainly pleased that I saw the Original STARKING tree. I was greatly surprised when I saw this tree and surprised again when I saw the young STARKING trees. The contrast in color between their fruit and Ordinary Delicious trees in same orchard was more striking than I expected."

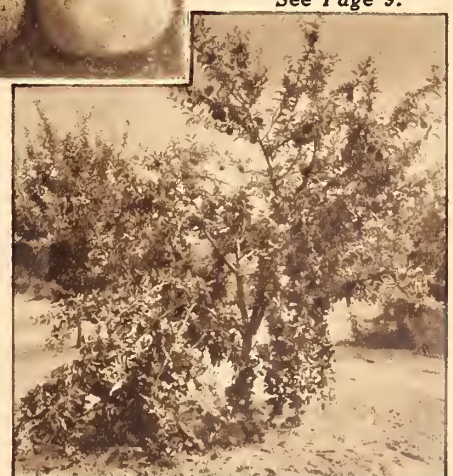
"I am so confident that it will prove wonderfully valuable that I want to be permitted to purchase some of the first trees of this variety that you offer for sale."

(NOTE.—Prof. Matthews bought and planted 750 STARKING trees in his orchard the next spring.



A Third-Generation Starking Tree

A 3rd-Generation Starking Tree in a New Jersey orchard bearing big apples that were red all over—even in blossom ends—in August. This PROVES that Starking retains its early coloring habits.



Another Young 2nd-Generation Tree

Just look at the huge crop on this 6-year-old 2nd-generation STARKING tree. Photo taken in August, with every apple Extra Fancy in color, Red-All-Over even in stem and blossom ends.

World's Largest Fruit Growers Declare STARKING Yields Biggest Percentage of Extra Fancy Apples



The Original STARKING Limb, purchased by us for \$6,000.00 and entire tree enclosed in "burglar-proof cage for protection.

"Shows Even More Color Than Necessary For Fancy Grade!"

That's the positive statement of Prof. Roy E. Marshall, Assoc. Prof. in Horticulture, Michigan State College.

"The color of the STARKING apples even from the most shaded portion of the limb showed more color than is necessary for EXTRA FANCY GRADE.

"STARKING is a bud sport of Delicious having every tree and fruit characteristic of the latter, PLUS SOLID RED COLOR. It should yield like Delicious, grade out better and command even better prices on apple markets than Delicious."

AMERICAN Fruit Growers, Inc., world's largest orchard company, producers of Blue Goose brand of fruit (with general headquarters at Pittsburgh, Pa.), have planted thousands of our STARKING trees in their great orchards throughout America. LEO C. ANTLES, Orchard Production Manager of their great company, recently reported to us:

"Starking by side of ordinary Delicious show tremendous contrast in color. Beautiful dark red Starking apples hanging on trees (when the Delicious are still green) bring an exclamation of surprise from all observers. They grew to 48 size (48 to the bushel means apples over 12½ inches in circumference—apples that bring exceptionally high prices on every market). The apples show distinctive five-knob shape (like Delicious), but are solid, all-over red coloring instead of striped. Starking trees planted late in Spring 1925 bore apples last year (1927). Prominent fruit men who have seen these apples are excited over their early all-over coloring and higher percentage of extra fancy."



Nationally known Horticulturists inspecting young 2nd generation STARKING Tree bearing big crop of deep solid red apples while Delicious nearby were still green.

"This NEW Apple Is A Winner!"

This Northwest Fruit Authority, PROF. W. S. BROWN, State Horticulturist, OREGON, came 3,000 miles to attend this STARKING inspection. He writes: "You have a winner in this STARKING apple! In testing it" (last February) "we found the apple flavor excellent, color and finish especially good. Texture still solid and firm in February. Fine for shipping. Especially juicy and crisp for this time of year." (February).

Keeps Months Longer

PROF. POTTER, NEW HAMPSHIRE State Horticulturist, rendered this verdict: "This is beyond all doubt a TRUE BUD SPORT. I think that the change has been of such a nature that the new variety carries twice as many hereditary factors (red) as Delicious carries. This increased color will make it possible to pick the fruit earlier and MAKE THE APPLES KEEP LONGER. This will be of great value to commercial orchardists!"



Young 6-yr. old STARKING orchard with trees loaded with big, solid red apples in August when Delicious in adjoining orchards were just showing traces of color.

Be Sure To Fill Out Purchase Agreement When Ordering STARKING

Be sure to attach signed Purchase Agreement. Otherwise trees cannot be shipped. See Prices on Page 9—opposite.

"This New Apple Will Soon Become A Leader!"

C. C. Vincent, State Horticulturist of Idaho, traveled a round trip journey of over 5,000 miles to inspect STARKING and then wrote:

"Quality and color are the aims of Northwest apple growers. In many districts where color is hard to obtain, STARKING will soon become the leader. Lack of color means lower grades (lower prices). It is one of the big problems that apple growers everywhere have to face. Often, in order to get necessary color for Extra Fancy Grade, apples are left a little too long on the trees—and soon become mealy.

"STARKING will overcome this defect.

My examination of the STARKING limb, as well as the young STARKING trees, showed 100 per cent. bright red color on ALL the STARKING apples in August.

"This new variety is going to revolutionize commercial apple growing because: (1) The bright red color it develops. (2) The earlier coloring that permits earlier picking. (3) Uniform coloring on ALL the STARKING apples. (4) A longer keeper. (5) Does not become mealy. (6) A better commercial apple.



State and U. S. Govt. Horticulturists waxed enthusiastic when they saw young 2nd generation STARKING tree bearing even redder, larger apples than the Original Limb.

The \$6,000.00 STARKING Bud Sport Limb

Amazed the Thousands Who Thronged to See It!

Never before in the history of Pomology has an event ever created such enthusiasm among National and State Fruit Authorities and Fruit Growers as did the discovery of the **STARKING \$6,000.00 Bud Sport Limb**—a "Double-Red" Later Keeping Delicious!

Literally thousands of them, including 43 of the most noted State and Government Horticulturists and hundreds of Fruit Growers and Fruit Buyers, thronged to inspect this Original **STARKING** tree and the young second generation **STARKING** trees at the Dedication of this remarkable tree in August, 1925. This was the second great pilgrimage in 3 years to the Original **STARKING** tree. The sight they beheld amazed them. The big, beautiful, all-over-red apples (in August, when ordinary Delicious were still green) stirred them to enthusiastic and confident predictions of Success for **STARKING**.

In this Fruit Book is a handful of the hundreds of optimistic prophecies made by the most learned, far-seeing Fruit Experts the world knows. Use them as your guide in purchasing **STARKING** trees for your orchard:



Horticulturists examining Starking on young 4 yr. old tree. Big fruit red all over in August.

It Convinced Leading Oregon Authority

This Northwest Fruit Authority, **PROF. W. S. BROWN**, State Horticulturist, OREGON, came 3,000 miles to attend this **STARKING** inspection. He writes: "You have a winner in this **STARKING** apple! In testing it" (last February) "we found the apple flavor excellent, color and finish especially good. **Texture still solid and firm in February.** Fine for shipping. Especially juicy and crisp for this time of year." (February.)

"Keeps Much Longer—Doesn't Get Mealy"

PROF. J. H. GOURLEY, Ohio, Chief Horticulture Dept., enthusiastically stated, after inspecting the Original **STARKING** Limb and the young 2nd generation **STARKING** trees in bearing:

"I congratulate you on your 'find'!

"The guaranteed red color of the **STARKING** assures fruit growers: Early Picking, Firmer Fruit for Longer Keeping and Better Quality during a longer Storage season."

"Far Greater Value Than Old Delicious!"

The Internationally famous Dr. U. P. Hedrick, State Horticulturist of NEW YORK declared:—"STARKING has come to stay! **STARKING TAKES ON ITS ALL-OVER RED COLOR MUCH EARLIER AND CAN BE PICKED AND STORED BEFORE MEALY MATURITY.** This gives it far greater value than old Delicious. **STARKING** came into being in an improved form and **WILL NEVER RETURN TO THE PARENT STATE.** Young **STARKING** trees bear the same extra red fruit."

"Certainly—A Super Delicious!"

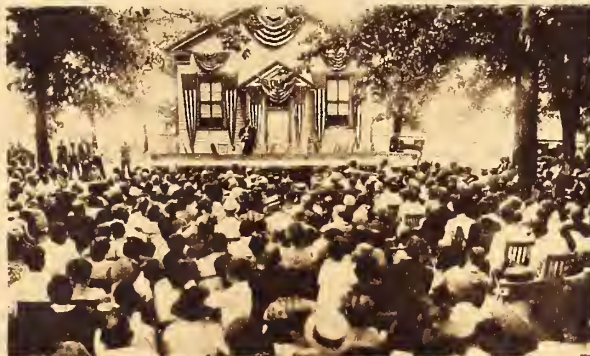
Prof. T. J. Talbert, State Horticulturist, Missouri, stated: "I have seen **STARKING**, noted its texture, and **marveled at its color** (in Aug.). It deserves a brilliant future because it will keep far through the Winter **WITHOUT BECOMING MEALY!** It is a super-Delicious and will be outstanding as a leader!"

Starking Sales 80% More Than Delicious

Though introduced only in 1925 (after years of test) **STARKING** has been accorded a record breaking welcome by growers. Last season we sold 80 per cent more **STARKING** trees than Delicious!



Arrow points to \$6,000.00 Starking Limb—that one limb on a Stark Delicious tree in a New Jersey orchard that proved itself a TRUE Bud-Sport to thousands of expert exacting observers.



Immense crowd at Starking Dedication. The largest crowd that ever attended a horticultural event. Many came thousands of miles—practically every State in the Union was represented.

New England Votes in Favor of Starking

After visiting and inspecting the Original \$6,000.00 **STARKING** Limb and 2nd and 3rd Generation **STARKING** Trees propagated from scions cut from the Parent Limb and the fruit they bore, Prof. R. A. Van Meter, Prof. of Pomology, Massachusetts, Agricultural College, declared:

"Here in New England (and other sections) where markets demand red color even more insistently than other markets, early high coloring is of particular importance. **Starking** certainly colors earlier than the old variety and that should mean a higher color at harvest time or an earlier harvest season when advantageous.

"Stark Bro's are to be congratulated upon the spirit with which they have made it available to the public. I join the Agricultural Colleges and Experiment Stations generally in wishing you success. I have seen **Starking** upon the original tree and have seen it growing beside Delicious. It certainly colors earlier."



The owner of the orchard in which Starking originated—holding by his left hand the True Bud Sport Starking Limb

STARKING TREE PRICES

RECORD BEARING	Each	10	100	1000
1st Class Stark Trees	rate	rate	rate	rate
4 to 7 ft. size.....	\$1.50	\$1.20	\$1.00	\$.80
3 to 5 ft. ".....	1.25	1.10	.90	.70
2 to 3 ft. ".....	1.00	.90	.70	.60

Prices F. O. B. Nursery

Less than 10 go at "each" rate; 30 to 299 at 100 rate; 300 or more at 1000 rate. Write Wholesale Department for Prices on 500 or more.

WARNING—STARKING Trees can be Legally Sold ONLY by Stark Bro's.

A Late-Winter Apple

The \$5,000 Tree In A Cage

Original
Stark's
Golden
Delicious

Tree in Cage on Rocky West Virginia Mountainside. WE PAID \$5,000.00 FOR THIS TREE and ground on which tree stands (30 ft. square). This great MOTHER TREE of all Genuine Golden Delicious is the MOST VALUABLE GOLDEN APPLE TREE IN THE WORLD.

A. H. Mullins the Originator is shown standing by Gate by Big Cage.



Sold ONLY
by
Stark Bro's

This Barren Out-of-the-way Mountainside Gave to the World the Greatest Yellow Apple. Lovers of Fruit Will Long Remember This Historic Spot.

Actual
Size

Stark's Golden Delicious

Sold
ONLY
by Stark
Nurseries

The Trail of the Golden Apple

By Paul Clarence Stark

For 20 years the Starks had searched for a large late keeping yellow apple as good in quality and as satisfactory in tree as Stark Delicious.

The first "clue" came to us one April day some years ago. Three wonderful yellow apples reached us from a West Virginia mountaineer-orchardist—who wrote that they were a new, heretofore unknown, variety.

The second "clue" came when my brother, Major L. C. Stark, bit into one of the Golden apples. The flavor amazed him. They looked like Grimes Golden—but tasted like Stark Delicious! They were shaped like Stark Delicious. And they were in perfect condition in April! Grimes Golden would have been rotted and gone months before.

All our experts were given a "taste." The enthusiasm that resulted could have only one parallel in our over a century of history—that being when Stark Delicious, the King of All Red Apples, was discovered by C. M. Stark.

One apple was sent to Col. Brackett, late U. S. Pomologist at Washington, D. C. Friends present at the time told us how the Colonel came hurrying into the office, a little slab of this wonderful yellow apple perched on his knife blade, exclaiming, "Taste this! Here's an apple with an even better flavor than Grimes Golden." He wrote us glowing praises.

That fall the writer started on "The Trail of the Golden Apple." A 1,000-mile railroad trip, plus a 20-mile horse-back ride through West Virginia mountain wilds, brought me to the farm of Mr. A. H. Mullins, on whose place this Golden Apple tree had grown—no one knew how.

Back of the house I saw an orchard. But—here came the dismal disappointment! Every tree I could see was nothing but wild seedlings—miserable runts.

Dejected and sick at heart, I turned around to leave—when—I SAW IT!

There, looming forth in the midst of the small, leafless, barren trees, was a tree with rich green foliage that looked as if it had been transported from the Garden of Eden.

That tree's boughs were bending to the ground beneath a tremendous crop of great, glorious, glowing, golden apples.

I started for it on the run. A fear bothered me, "Suppose it's just a Grimes Golden tree after all!" I came closer and I saw the apples were 50 per cent larger than Grimes Golden. I plucked one and bit into its crisp, tender, juicy-laden flesh. Eureka! I had found it. The long sought for perfect yellow apple had been discovered. The "Trail of the Golden Apple" had reached a successful end.

And, just as I had eaten my apple, core and all, I turned to see Mr. Mullins, with an "I-told-you-so" smile on his face, climbing the hill to welcome me.

Golden Delicious Bought For \$5.75 Bu. Wholesale By Ocean Liner—Preferred to Red Apples

Here's a letter from a prominent ARKANSAS man that will make any progressive fruit grower "Stop-Look-And LISTEN!"—

Stark Bro's Nurseries.
Gentlemen:

Ft. Smith, Ark.

Reserve for me 250 Golden Delicious trees at once.

I have about 100 Golden Delicious trees now and must say that they have given me the best satisfaction of 5 or 6 varieties I have. This year I have had to pick off some 5 to 10 bushels to keep my 8-yr.-old Golden Delicious trees from breaking down.

I have just recently returned from a South American and South African cruise on the liner "Duchess of Athol." In the dining room of this ocean liner, they were serving Golden Delicious apples.

Being interested, I went to the Head Steward and asked him WHERE he got these Golden Delicious apples. He said that they had been bought in New York City.

I then asked him what he had paid and HE SENT FOR HIS INVOICE AND HE HAD PAID \$5.75 A BOX FOR THESE APPLES! They were medium size (about 138 to the box).

They had red apples on the dining tables of this liner, but the Golden Delicious apples were all gone before the cruise was half over. NOBODY ATE ANY OF THE RED APPLES until Golden Delicious were all gone.

C. A. Lick

Stark's
Golden
Delicious

BRINGS HIGHEST RECORD PRICE!

\$2,947.50 Eagerly Paid for 1 Carload of these Golden Apples by New York Wholesale Apple Buyer!

THE NEW YORK PRODUCE NEWS of Feb. 19, gives us — and you apple growers — this good news:—



**Jos. Sicker
Holding
\$2,947.50
Check**

"At wholesale auction last week, Joseph Sicker (a leading New York apple buyer) paid \$2,947.50 for 1 carload of Golden Delicious apples (only 736 boxes) — unquestionably the highest price at which a car of apples has been sold! He said that the fancy fruit stores of Greater New York have been calling on him for a yellow apple that would retain its flavor and beautiful appearance after long stor-

age," (as these apples did, coming out after being about 6 months in storage). "After tasting some of the apples from this car, Mr. Sicker gave samples to his prospective buyers, who said they would buy them regardless of price."

SELLS FOR DOUBLE ORDINARY PRICE

Dr. S. H. Miller, Missouri orchardist, declares: "All my 60 Golden Delicious trees now six years old bore last year. Some yielded 4 bushels. I sold them all at more than double the price of ordinary varieties."

Consumers Go Wild Over Golden Delicious

Within a short time after he had introduced these Golden Delicious to New York dealers and consumers, Mr. Sicker was sold out completely—and wired Golden Delicious growers: "NEW YORK RETAILERS AND CONSUMERS GOING WILD

FOR GOLDEN DELICIOUS. Our stock cleaned up. How many cars Golden Delicious can you furnish immediately? Public will pay most any price. Wire answer."—Joseph Sicker & Co., New York City.



95 Golden Delicious Trees, 5 Years Old Produced \$1,140.00 for this Indiana Grower!

Here is amazing **PROOF** of the record-breaking, money-making productivity of "The Queen of All Yellow Apples." Think of young 5-year-old trees—only 95 of them, **on less than a single acre** (see photo above) yielding \$1,140.00 (One Thousand, One Hundred Forty Dollars) in one of the worst apple years in generations. Mr. N. Y. Yates is one of the best known and most successful orchardists in **KNOX COUNTY, INDIANA**. He writes:

December 20.

Stark Bro's Nurseries.

Dear Sirs:

I bought 95 Golden Delicious trees 5 years ago this last Spring. This season they produced 350 bushels of apples.

Two hundred and seventy bushels were fancy and sold to commission houses and grocers at \$3.50 per bushel basket. The other 80 bushels were clean, smooth fruit and out-sold my best Grimes Golden. While other varieties did not have much fruit left after the spring freeze, the Golden Delicious set too full and the frost did not hurt them.

They are very hardy trees, good shape, do not require much pruning, make a good growth each season and bear full crops young.

I picked a nice crop from these trees last year also, but did not keep a record of the yield. Some people had tried to make me believe they would not do in this section. Now these people wish they had planted the Golden Delicious, especially when I showed them my sales this year, which were \$12.00 per tree, on five-year-old trees. I wish now I had 5,000 trees of the Golden Delicious in my orchards. This year my sales from them would have been \$60,000.00, (at 5 years old),

as my production averaged \$12.00 per tree.

I received so many comments on my Golden Delicious at the Indiana State Fair, where we won the Blue Ribbon and where I displayed the fruit Apple Week, that several shipments of my Golden Delicious have gone to U. S. Senators and Congressmen, Washington, D. C., and one shipment to President Calvin Coolidge.

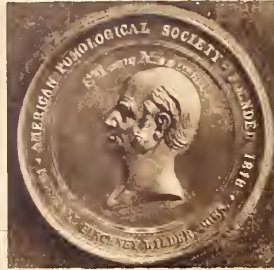
Cordially yours,

(Signed) N. Y. YATES.

(Note:— \$12.00 per tree average means that these 95 Golden Delicious trees, 5 years old, on less than one acre, brought \$1140.00 in one year.)



R. K. McCobban, Polk Co., Ore. (above) declares—"This tree bore 12 apples at 2 yrs. old and 163 at 3 yrs. old."



Golden Delicious Awarded Wilder Medal by Supreme Court of Fruit World!

What the Supreme Court is to American Law, the American Pomological Society is to American fruit and horticulture. For over 80 years it has been the unquestioned authority on all questions pertaining to fruit on the Western Hemisphere.

This Society gave to the Golden Delicious the highest tribute ever bestowed on an apple since the introduction of Stark Red Delicious—the only Wilder Silver Medal (see cut above) that has ever (with two exceptions) been granted to an apple variety in the last 40 years.

STARK'S GOLDEN DELICIOUS PRICES

RECORD BEARING 1st Class Stark Trees	Each	10	100	1000
	rate	rate	rate	rate
4 to 7 ft. size.....	\$1.50	\$1.20	\$1.00	\$.80
3 to 5 ft. ".....	1.25	1.10	.90	.70
2 to 3 ft. ".....	1.00	.90	.70	.60

Prices F. O. B. Nursery
Less than 10 go at "each" rate; 30 to 299 at 100 rate; 300 or more at 1000 rate. Write Wholesale Dept. for Prices on 500 or more.



"All my 250 Golden Delicious trees planted 2 yrs. ago bore 20 to 30 big apples each this year!" writes Chas. Riedenbacher, Burlington, N. J. (Photo above).



"My Golden Delicious trees (4 years top worked) averaged 4 bu. to the tree—and this is the third crop," (above) writes Wm. Hotelling, Columbia Co., N. Y.



F. D. Straight, Allegan Co., Mich. writes:—"This 4-yr.-old Golden Delicious tree (above) has borne 3 successive years."

Bore Despite 2 Freezes And 3 Bad Frosts

This last spring, in a great many States, there were 3 hard frosts and 2 ruinous freezes, right after an extra warm March had brought forth the tender fruit blooms.

But—Stark's Golden Delicious produced big crops of fine apples after the frosts, because of its frost-dodging blooming habit. This remarkable variety of fruit tree puts forth three different blooms. First—the ordinary fruit spur buds. Next—the lateral bloom-buds. And, then, terminal bloom-buds. Two sets of blooms may get frosted—and still the third can produce an abundance of fruit. No other apple does this.

Bore At 2 Years Old In 33 Different States

—It has astonished scientists and horticulturists by bearing when 2 years old in Arizona, Missouri, West Virginia, Oklahoma, New York, Texas, Mississippi, California, Iowa, Connecticut, New Mexico, Arkansas, Ohio, New Jersey, Oregon, Alabama, Idaho, Wisconsin, District of Columbia, Louisiana, Washington, Maryland, New Hampshire, Utah, Maine, Kansas, Tennessee, Pennsylvania, Illinois, Kentucky, Virginia, Indiana, and Massachusetts.

Enthusiastic reports have poured in upon us from delighted growers everywhere. Read statements beneath photos on this page.



A. W. Brayton, Mount Morris, Ill. writes—"My 2-yr.-old Golden Delicious (above) is bearing 7 apples!"



Golden Delicious apples picked in orchard (above) of J. L. Webster, Chelan Co., Wash. "These apples averaged as large as 48 to the bushel."



130 Golden Delicious trees (above) on less than 2 acres yielded 1220 bu., that sold for \$5,583.00 for American Fruit Growers, Inc. (Hdgrs., Pittsburgh, Pa.)



J. E. Eggers, St. Louis Co., Mo., declares: "Every one of my 50 Golden Delicious trees (above) bore in 3rd year—from 5 to 30 each."

Stark Red Delicious Trade Mark

ORIGINAL TREE Strain Sold ONLY by STARK BRO'S *A Late-Winter Apple*

Shrewd orchardists **insist** on genuine Stark Red Delicious because they know the ORIGINAL TREE Strain Stark Red Delicious can be obtained **ONLY** from Stark Bro's.

They know that the Original Tree (Photo at left) was discovered by C. M. Stark over a third of a century ago—and that we immediately **purchased Exclusive and Perpetual Rights** to this tree from the owner of the farm, Jesse Hiatt, and we are protected by an U. S. Registered Trade Mark. We continuously renew our stock from this **Original Tree**. No other nursery can obtain buds and scions from the Original Tree.

Over 35 years ago, at the time we introduced Stark Delicious, we confidently **PREDICTED** that it would revolutionize the apple market and **BRING RECORD HIGH PRICES TO ITS GROWERS**. In less than a generation our prediction came **TRUE**, as you know.

Your orchard is a lifetime proposition. You don't want to gamble—you **must be sure!** You want the Genuine ORIGINAL TREE Strain of Stark Delicious—the one that is backed by a record of 50 years of proven hardiness, disease resistance; regular annual bearing, and also—has been the biggest money-maker everywhere. The new Starking is even better, as it is twice as red

\$1,000 An Acre In Nebraska

"Have sold \$1,000.00 worth of apples from just one acre of Stark Trees. Stark Delicious sold at \$3.50 per bushel in the orchard."—Chas. S. Ludlow, Red Cloud, Nebr.

7 Acres Orchard Beats 50 Acres Corn

H. N. Yohe, Des Moines Co., IOWA, reports: "My returns from 7 acres fruit is more than 50 acres good corn would bring!" A nervous break-down 7 years ago compelled him to work out of doors and his orchard work has not only improved his health, but yielded him a good living, enabled him to send his boys through High School and now through College and also lay up money for old age.

\$4.00 Per Bushel in Maryland

"The majority of my trees are Stark Delicious. Last year I could not begin to supply the demand for Stark Delicious apples at our local stores at \$4.00 per bushel basket, while other sorts were hard to sell at \$2.00."—D. P. LeFevre, Cumberland, Md.



Original Stark Delicious Tree

Photo of Jesse Hiatt and Original Stark Delicious Tree (exclusive and perpetual propagation rights owned by Stark Bro's)—now more than a Half Century Old but still bearing splendid apples.

\$50,000.00 Crop Off 40 Acres

Buck Bros., well-known Elberfield, Ind., growers, got a \$50,000.00 apple crop from 40 acres. Sixteen-year-old Genuine ORIGINAL TREE Strain Stark Red Delicious Trees bore as high as 20 bushels to tree. Their Stark Delicious sold for \$12.00 a barrel when other red apples went for less than half that price. They admit that it was the Stark Delicious trees that made the \$50,000.00 crop value possible!

Made Missouri Man Rich

W. C. Curd of Saverton, Mo., formerly a city man, bought 110 acres at \$20 an acre. Planted it to ORIGINAL TREE Strain Stark Delicious and others of our leading varieties. Three crops off those trees recently brought him over \$84,000.

74 Trees Yield \$2,460.00 Crop

Seventy-four 11-year-old ORIGINAL TREE Strain Stark Delicious trees yielded C. L. Witherel, near Middlebury, Vermont 576 bushels of glorious apples. They brought him Two Thousand Four Hundred and Sixty (\$2,460.00) Dollars. He tells us his trees began bearing when four years old—and have borne every year since. He now has 1,000 more Stark Delicious 6-year-olds that he declares are producing a bumper crop this year.

Afterwards he wrote: "We have just sent our last car of Stark Delicious to New York getting \$6.00 per bushel box in New York wholesale markets for the run of fancy Stark Delicious." (Fancy McIntosh apples sold for \$5.00 per barrel in same market same day.)

Pays 10 Times As Much As Cotton

A. H. Thompson, Lee Co., Alabama, reports: "My orchard, containing ORIGINAL TREE Strain Stark Delicious has paid me 10 times as much as cotton or corn. Some of my Genuine Stark Delicious trees yielded as much as 25 bushels to the tree.



Showers of Apples

The splendid genuine Stark Delicious Tree Orchards of C. M. Fette, Marion, Co., Mo., were simply loaded with magnificent specimens of Stark Delicious apples.



Monument to Original Stark Delicious Tree

Leading scientific horticulturists from all parts of the U. S. and Canada, attended the dedication of this monument erected by the state of Iowa to the original Delicious apple tree at Winterset, Iowa. This tree, although over 50 years old, still bears full crops of first class apples and at the time of this dedication was loaded with a beautiful crop.

STARK RED DELICIOUS PRICES

RECORD BEARING	Each	10	100	1000
1st Class Stark Trees	rate	rate	rate	rate
4 to 7 ft. size	\$1.20	\$1.00	\$.90	\$.60
3 to 5 ft. "	.90	.80	.70	.45
2 to 3 ft. "	.65	.60	.55	.35

Prices F. O. B. Nursery

Less than 10 go at "each" rate; 30 to 299 at 100 rate; 300 or more at 1000 rate. Write Wholesale Dept. for Prices on 500 or more.

A Red Winter Apple

Jonathan—STARK STRAIN

Following a definite plan we searched the country over for years for a **Young-Bearing Jonathan** tree with all the required characteristics as a Parent tree for our Jonathan propagation. We finally located it in a Pike County, Missouri, orchard and our entire Jonathan propagation is direct through this tree. This parent Jonathan tree matured 20 apples when 3 years old, 90 apples when 4 years old and has never missed a crop since. The fruit is extra size, deep rich flashing red and the tree is as perfect an orchard tree as we ever saw. It bore after a freeze, when other Jonathans in same block failed.

Jonathan is nationally known by both home and commercial orchard growers, and is universally liked. The apple is a bright flashing red with a spicy rich acidity that has made it a prime favorite, and **the tree has wide adaptability**, and is largely grown throughout the Northwest, Central West, East and South and as far North as Michigan.

Jonathan, Starking, Golden Delicious, Stayman Winesap, Stark Delicious, Stark King David and Grimes Golden are the high quality sorts that are being most largely planted and are making most money for the grower.

The Jonathan is a wonderfully good orchard tree, rather spreading in growth, *hardy*, long lived, bears young, (our strain bears remarkably young), the fruit is popular on the market and the price it brings makes it extremely profitable.

"The man who can successfully grow Jonathan has the financial problem of apple growing solved."—Thomas F. Rigg, Hardin Co., Iowa.

JONATHAN APPLE PRICES

RECORD BEARING 1st Class Stark Trees				
	Each	10	100	1000
	rate	rate	rate	rate
4 to 7 ft. size	\$1.10	\$1.00	\$.85	\$.55
3 to 5 ft. "	.80	.75	.65	.40
2 to 3 ft. "	.60	.55	.50	.30

Prices F. O. B. Nursery.
Less than 10 go at "each" rate; 30 to 299 at 100 rate; 300 or more at 1000 rate.
Write Wholesale Dept. for Prices on 500 or more.

Young-Bearing Strain

Jonathan Average Size



"Jonathan trees hardy here. Apples are good color, good size, good keepers, fine for dessert and cooking."—E. P. BROTZMAN & SON, Binghamton, N. Y.

"One of the greatest and most profitable varieties grown. High color and excellent quality make it a favorite on all markets."—O. M. BROOKS, Chelan Co., Washington.

"DoubleLife" Grimes Golden—Record-Bearing Strain

A Yellow Winter Apple—The best Yellow Apple except Golden Delicious.

Our Grimes Golden trees are propagated direct from a Record-Bearing tree—the Most Famous in the U. S. for vigor, good fruit and heavy bearing. Official record of this tree at the Ohio Experiment Station show that it averaged **23.9 bushels per year over a period of 14 years.** Tree and fruit are typical.

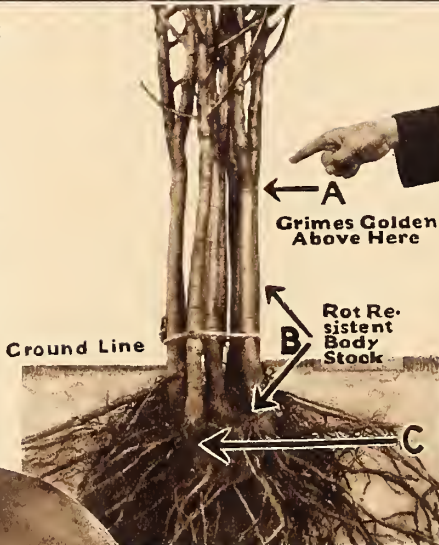
Grimes Golden is Medium size—*Mid-Winter* apple—*hardy*—golden transparent yellow color with exquisite, fragrant aroma. Crisp, tender flesh, rich, spicy and juice laden. Enjoys great popularity and grows **demand and secure big prices everywhere every year.** Should be largely planted in home and commercial orchards. Surpassed only by our other yellow apple—Golden Delicious.

Trade Mark



"DOUBLE-LIFE"

GRIMES GOLDEN



Grimes Golden Above Here

Rot Resistant Body Stock

Ground Line

Recommends New Grimes Golden

"I have advised the planting of double-worked Grimes Golden for years. Otherwise it is short lived."—BENJ. W. DOUGLASS, former Indiana State Entomologist.

DOUBLE-LIFE GRIMES GOLDEN PRICES				
RECORD BEARING				
	Each	10	100	1000
	rate	rate	rate	rate
1st Class Stark Trees				
4 to 7 ft. size	\$1.20	\$1.10	\$.95	\$.65
3 to 5 ft. "	.90	.85	.75	.50
2 to 3 ft. "	.70	.65	.60	.40

Prices F. O. B. Nursery.
Less than 10 go at "each" rate; 30 to 299 at 100 rate; 300 or more at 1000 rate. **Write Wholesale Dept. for Prices on 500 or more.**



STARK RECORD-BEARING "DOUBLE-LIFE" GRIMES YIELD BIG CROPS OF FINEST GOLDEN FRUIT.

Old Grimes Golden Weakness Eliminated

The only weakness of Grimes Golden has been that Collar Rot has killed off Grimes Golden trees by thousands. To overcome this defect, the Stark "Double-Life" method of propagating insures a tree that will live as long as any other standard variety. The "Double-Life" process, trade-marked by Stark Bro's, adds to Grimes Golden trees the stamina and roots of a sturdy tree and doubles the

life of the tree. The photo at the left explains this method. We start with carefully selected French Crab roots. To each is grafted a long scion of sturdy Rot-Resistant Stock, which forms the main mass of lusty root growth and the trunk. (See B in photo.) High up on this disease resistant "Double-Life" body is added the Grimes Golden Bud. (See A in photo.) Wood of Grimes Golden well above ground. Can be no collar rot. (C, hardy French Crab roots.)



Stayman Winesap—Stark Heavy Bearing Strain

Branch Stayman Winesap from a 5-yr.-old tree. Apples always large, even size, beautiful.

One of America's greatest long-keeping, high quality apples. The most valuable Winesap—(except Staymared) distinctly striped with carmine; large size, exceedingly handsome. Quality indescribable; flesh is juicy and crisp with mild, pleasing acidity and an amazingly pleasant, spicy flavor.

The "Record-Bearing" Tree from which all our Stayman Winesap are grown is from a famous Botetourt Co., Va., orchard—selected because of high color and mammoth

A Late-Winter Apple

fruit, vigor and size of tree, and enormous crops, during a 5 year period—one year over 66 bushels. Fruit is large, very fine color, and the trees are satisfactory in every particular. The tree of Stayman resembles old Winesap, but is a stronger grower and hardier, being profitably grown in far north apple sections where Winesap will not stand. The growth of Stayman in popularity has been truly marvelous. About thirty years ago the originator, the late Dr. Stayman of Kansas, after trying without success to encourage his friends to take it up wrote us: "There will come a time when all will want it." At that time we were most favorably impressed with the variety, but the astonishing popularity it has achieved has surprised even us. *Everwhere, in all climates and under all differing conditions it has proven its superiority and established itself as an orchard leader. In commercial orchards, plant Staymared* (See Page 1).

"The Stayman sent you weighed 20½ oz. and measured 14 inches in circumference. Grew on a Stark Tree. No weak tree could produce an apple as big and fine."—Jas. Turner, Pike Co., Mo.

FROST-PROOF BLOSSOM

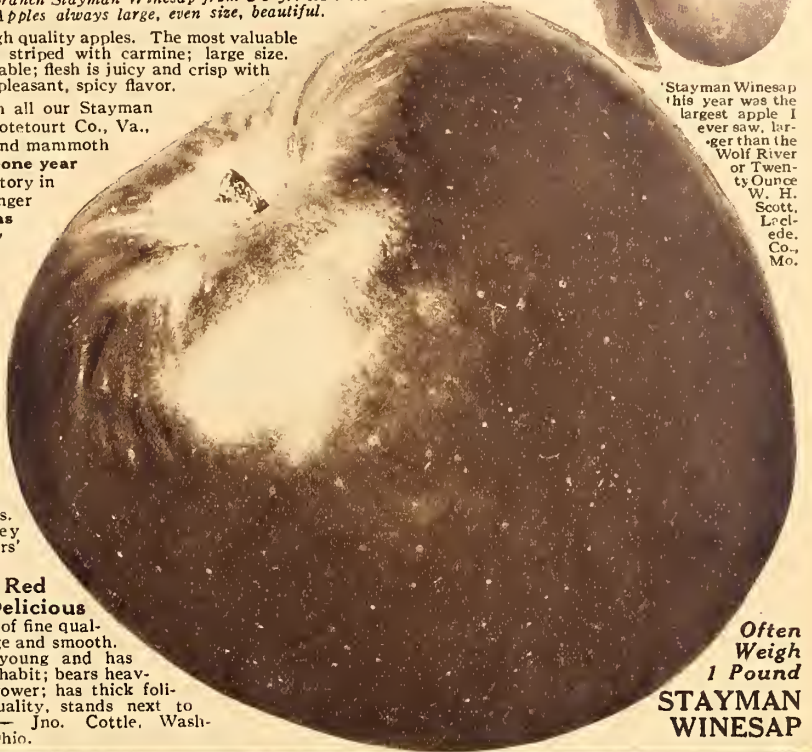
"Stayman Winesap is a fine, strong tree with frost-proof blossoms. I wish my whole orchard were Delicious, Stayman and a few Jonathan." —C. M.

Fette, V. Pres. Miss. Valley Apple Growers' Congress.

Next Best Red Apple to Delicious

"An apple of fine quality, nice, large and smooth. Tree bears young and has nice upright habit; bears heavily; strong grower; has thick foliage. For quality, stands next to Delicious." — Jno. Cottle, Washington Co., Ohio.

Stayman Winesap this year was the largest apple I ever saw, larger than the Wolf River or Twenty Ounce W. H. Scott, Leclède, Co., Mo.



Often Weigh 1 Pound STAYMAN WINESAP

APPLE PRICES, Page 15				
RECORD BEARING	Each	10	100	
1st Class Stark Trees	rate	rate	rate	rate
4 to 7 ft. size.....	\$1.10	\$1.00	\$.85	\$.55
3 to 5 ft. "80	.75	.65	.40
2 to 3 ft. "60	.55	.50	.30

Prices F. O. B. Nursery
Less than 10 go at "each" rate; 30 to 299 at 100 rate; 300 at 1000 rate. Write Wholesale Dept. for Prices on 500 or more.

Summer and Fall Apples



Earliest Apple

Early Red Bird

Early Red Bird (Known in Canada as Crimson Beauty). *Earliest of ALL apples.* Strikingly beautiful, flaming scarlet, strawberry red, good size, ripens 7 to 10 days earlier than Yellow Transparent. Tree strong grower, bears remarkably young, vigorous, extremely hardy and produces tremendous annual crops. All our Early Red Bird Trees are propagated from the best Parent Tree of known bearing record. **10c more than above prices.**

"A Gold Mine for Early Apple Growers." Have sold for double the price of Yellow Transparent and Astrachan. Prof. Sanders, Canadian Dept. Agri., says: "Earliest apple, young bearer—half bushel on 2 year trees; better slipper than Yellow Transparent. 15 acres in one year brought Mr. Chute 1,500 bbls. sold at \$7.00—or \$10,500.00." Mr. Adney, son-in-law of Mr. Sharpe, famous originator of this apple, says "Remarkably prolific, extremely hardy, never winter kills. 10 days earlier than earliest apple."

Wilson Red June *Summer.* Biggest, hand-somest mid-summer apple except Summer Champion. Glorious deep red. Brought \$8.00 per bbl. Ripens after Red June; good quality. Our trees propagated from famous Original Tree discovered by us in Ark. **Hardy.** Stood 40 below zero. Ships well.

Henry Clay (Trade Mark). *Very Early Summer.* Large pale yellow with crimson cheek. Looks like Maiden Blush, but better, 2 months earlier and ripens its crop quickly and evenly. Tree strong-growing, spreading, regular and abundant bearer; blooms late, *hardy*, and is earlier, larger, better quality and a better shipper than Yellow Transparent. Propagated from Parent Tree direct from Original Tree in Hopkins Co., Ky.

Yellow Transparent *Ripens very early.* Medium, large, waxen yellow, crisp, sub-acid. Tree upright, bears young. **Hardy.** Blight is its great enemy. We prefer Henry Clay. However, our trees are propagated from Parent Tree selected in Ohio Exp. Sta. orchard.

Double-Red Duchess *Summer.* Combines with all the desirable qualities of old Duchess that all-important quality of high red color. Described by Dr. Dorsey as truebud sport. *Extremely hardy.* Will bring top prices. Propagated by us from recently discovered Double-Red Duchess Parent Trees. **10c extra.**

Wealthy *Fall.* Best of all fall apples. All our Stark "Record-Bearing" Wealthy propagated from Zeucher's famous Wealthy Parent Tree in Minn. *Noted for*

hardiness, and extensively grown. Tree a strong, spreading grower, **bears extremely young and every year.** Remarkably free from disease and long lived. Fruit attractive,

brilliant red striped, medium to large. Quality superb—**wonderful, wine-like flavor, refreshing juice.** **10c extra.**

"Triple-Red" Gravenstein (Crimson.) *Summer.* Mr. Stark went all the way to Nova Scotia to get this three-times-redder red sport limb of a red sport tree. **Hardy.** Good quality. Best in its season except Summer Champion. **10c Extra.**

Summer Champion *Summer.* Most **Delicious** Summer apple. Brilliant, **hardy**, strikingly beautiful, red striped. Ripens between Wilson Red June and Maiden Blush. Best keeping and shipping summer apple. Has brought as high as \$12.00 bbl. Splendid flavor. We propagate all our trees from Original Tree in Washington Co., Ark.

Maiden Blush *Early Fall.* Grown by us for over half century. Pale lemon yellow, bright blush. **Hardy.** Vigorous, spreading, sometimes blights but our propagation is from "Record-Bearing" Parent Tree in orchard of Ohio Exp. Sta. Apples ready for market when there is little competition.

Other Summer and Fall Apples We also grow and offer Early Harvest, Liveland Raspberry, Sweet Bough, Red Jefferis, Old Duchess, **Early McIntosh, (10c extra); Imperia Rambo, (10c extra), and Mother.** Each variety is propagated from "Record-Bearing" trees—selected after years of search.

Stark King David

Stark King David Trade Mark



Trade Mark

"Stark Trees Would Be Cheap at \$5.00 Each Compared To These 'Cheap' Trees!"

"They would be bargains at \$5.00 each compared to those other trees as a gift!" declared Mr. Sutton, of Houser & Sutton, owners of a 7,000-Stark-Tree orchard, near Newton, Ill. "Last spring I was induced to buy 800 trees (not Stark Trees) because of a so-called bargain price. When they came I had to throw away about 400 as worthless.

"I received a shipment of Stark Trees about the same time. So I planted the best of the cheap trees between the Stark Trees.

"Note the difference! Photo No. 1 (below) shows a Stark tree only one year and three months after planting. Photo No. 2 (below)

shows one of the cheap trees that was planted at the same time!

"Why—to make the difference even more marked—look at Photo No. 3 (below). That's a Stark Tree planted only three months ago. Even it has grown much better than the cheap tree planted 15 months before! That's why I say that a Stark Tree is cheap at \$5.00 compared to those other trees as a gift."



Photo No. 1 (above) shows a remarkable growth of Stark Record-Bearing Strain Trees only 1 year and 3 months after planting.

Photo No. 2 (above) is that of another nursery's "cheap" tree also 1 year and 3 months after planting. Note weakling growth.

Photo No. 3 (above) shows a Stark Tree only 3 months after planting. Even this very young tree is larger than the 15 mos. old "cheap" tree.

Winter. An improved redder Jonathan that does not drop and does not blight. A cross of Jonathan and Winesap. Colors earlier and can be marketed just before Jonathan are sufficiently colored and hence tops the Jonathan market at home and abroad. Stark King David also keeps well in storage until late spring, when it commands extremely high prices. Stark King David is one of the surest croppers—escapes late frosts—bore all over the U.S. when many old stand-by apples were killed by frost. A young, heavy and annual bearer. Sure and great money-maker in our orchards everywhere. We introduced Stark King David over 25 years ago, and buds cut from the original tree produced the special high type, heavy "Record-Bearing" tree selected from among many thousands as the Parent Tree for our future propagation. Jonathan and Stark King David are very similar. About the same size, both solid red, but King David is much darker—colors up earlier and hangs three weeks longer. Quality ranks among the best—even better than Jonathan. It is an ideal orchard tree—well formed, hardy, vigorous, blight resistant, healthy, long lived.

Fine As a Filler Tree

For a filler tree, no variety is better than Stark King David, B. F. Carroll, Kearney Co., Nebr., writes: "Out of 20 varieties, Stark King David is our best seller. It is highly colored, uniform in size, unsurpassed in flavor—better than Jonathan. An annual bearer, free from blight and the fruit hangs longer than Jonathan."

12 to 16 Bushels per Tree

Stark King David was best—bore 12 to 16 bushels per tree—writes John E. Walters, Newton Co., Ark. "Stark King David is a monarch—the best of all," declares W. H. Scott, LaCade Co., Mo.



Dark Red Rome Beauty

Winter Apples

"Double-Red" Rome

Winter. A deep solid Dark Red Rome Beauty that colors deep red clear to the stem and calyx—vastly superior to the Old Rome Beauty. This strain came to us from the U. T. Cox., Lawrence Co., Ohio, orchard. From these buds was produced this Record-Bearing Parent Tree for future propagation. This deep "Double-Red" color insures a much more ready market and better prices. Large, deep burning red, tender, juicy, excellent cooker, young bearer, late bloomer and bears regularly hardy and heavily when others fail. In 1925 was one of the four varieties (including Baldwin, Delicious) out of 200 that came through the killing late spring frosts and bore a crop. Price is 10c per tree extra. We can also supply old Rome Beauty.

McIntoshRed

Early Winter. A tender, juicy apple, uniform size, peculiar fragrance, almost snow white flesh. Very hardy. Our propagation is from a wonderful "Record-Bearing" tree in orchard of A. E. Jansen, the "McIntosh King" Ulster Co., N.Y. In 1919 bore 51 bushels; 1920, 24 bu.; 1921, 49½ bu.; 1922, 27 bu.; 1923, 24 bu. Price 10c Extra.



Paragon Winesap

Paragon

(Gilbert Strain) Late Winter.

"The Glorified Winesap." Fruit large, deep red, firm, mild, superb quality, keeps till late spring; does not scald. Tree grows to immense size, spreading, long-lived, bears tremendous crops. We propagate only from a heavy "Record-Bearing" Parent Tree because of its extra high color fruit. Do not confuse with old M. B. Twig (Arkansas). Hardy. Many so-called Paragon Winesaps are simply shy bearing, inferior trees rightly known as "Little Paragon" or old "Mammoth Black Twig."

Winesap

(Stark Virginia strain) Late

Winter. We found a remarkable Winesap Tree in the famous Hopkins Virginia orchard. In Vigor and Regular, Heavy Bearing, this tree certainly has the Best Record in the U. S. During an entire 8-year period it averaged 15 barrels. Hardy. Our Splendid "Virginia Strain" Winesap is from this Record-Breaking Tree, to which we have Exclusive Propagating Rights. 10c Extra.

Black Ben Trade Mark

Late Winter. Big improvement over Gano and Ben Davis. Will produce more bushels to tree than any variety except, possibly, Golden Delicious. Marvelously beautiful. Extremely large glowing deep blood red, (no stripes) snow white flesh. Hardy. Keeps perfectly in cellar and storage, no scald. Always commands good prices. A big money-maker.

D. E. Lewis, Kansas City, Mgr. Central States Orchard Co., says "Black Ben by far most satisfactory of all Ben Davis type, as it is not susceptible to canker like Ben Davis." We introduced Black Ben in 1898 and our propagation is from a second generation "Record-Bearing" tree in a Pike Co., Missouri, orchard, selected as the best Black Ben Parent Tree.

"Double-Red" Baldwin

Winter. Our New Improved "Double-Red" Strain, from a "Double-Red" limb on a Baldwin tree. Richer, darker red than old Baldwin—otherwise identical. Fruit averages above medium, uniform size, juicy, quality good. Trees are large, spreading, hardy, somewhat slow coming into bearing. Price 10c Extra.



John Bennett's loaded 3-year-old Stark King David bearing its record crop. Always a late bearer and produces immense crops.

Senator (Trade Mark) Winter. Introduced by us 28 years ago. Glossy, cherry red apple; large, juicy, delicious, keeps late. Hardy even far north. Parent Tree a marvelous producer.

Sweet Delicious Winter. New hardy child of Stark Delicious originated by N. Y. Exp. Sta. Recommended by them as a very sweet red apple. 10c Extra.

Giant Jeniton (Trade Mark)

Late Winter. Best, biggest Jeniton. Introduced by us. Our propagation came from Original Tree on the ground of J. W. Johnson, Lewis County, Mo.; buds from the original tree produced the "Record-Breaking" Parent Tree in Pike Co., Mo. Giant Jeniton is large, red striped, juicy and with tart, delightful flavor. Makes best cider. Hardy. Late Bloomer—sure-bearer.

R. I. Greening Winter. Large, greenish yellow apple, fair quality, planted largely East. Our strain from an Ohio Exp. Sta. tree with High-Bearing Record. Hardy, still planted North and East.

Mammoth Black Twig (Imp. Gilbert) Late Winter. Large, red. Hardy. Bears young, regularly, heavily. Not a slow, shy bearer like old M. B. Twig.

Cortland Late Winter. "A late-keeping McIntosh" that does not drop. A cross between McIntosh and Ben Davis developed at N. Y. Exp. Sta. Tender, juicy. Does especially well in New York and New England—succeeding in other sections too. Our propagation is from Parent Tree grown from buds cut from Original Cortland Tree. 10c Extra.

Double Red Northern Spy Winter. This strain is from buds cut at N. Y. Exp. Sta. A true Northern Spy but with a deeper redder color that insures more popularity and higher prices. Hardy.

Banana Winter. Clear yellow, pink blush, large size, distinctive banana flavor. We propagate from a "Record-Bearing" tree at Ohio State Exp. Sta. that averaged 14.8 bushels per year for 14 years. Golden Delicious is far superior. Hardy.

Other Winter Apples

—that we can supply are Fameuse, Baldwin, N. W. Greening, Bellflower Imp., Rome Beauty, York Imperial, Champion and Willow Twig—all Record-Bearing Strains.

CRAB APPLES

StarkFlorence Best red Jelly crab. Beautiful ornamental tree. Introduced by us. We propagate from a Parent tree with tremendous Bearing Record.

Stark Gold Crab Beautiful New Golden Crab. Makes exquisite jelly. Tree hardy; vigorous; bears big crops. Introduced by us.

CRAB APPLE PRICES

RECORD BEARING	Each	10	100	1000
1st Class Stark Trees	rate	rate	rate	rate
4 to 7 ft. size	\$1.75	\$1.60	\$1.40	\$1.00
3 to 5 ft. "	1.50	1.20	1.00	.80
2 to 3 ft. "	1.25	1.10	.90	.70

Prices F. O. B. Nursery. Less than 10 go at "each" rate; 30 or more at 100 rate.

APPLE PRICES, PAGES 16 and 17

RECORD BEARING	Each	10	100	1000
1st Class Stark Trees	rate	rate	rate	rate
4 to 7 ft. size	\$1.10	\$1.00	\$.85	\$.55
3 to 5 ft. "	.80	.75	.65	.40
2 to 3 ft. "	.60	.55	.50	.30

Prices F. O. B. Nursery (Red Rome Beauty is 10c per tree extra) Less than 10 go at "each" rate; 30 to 299 at 100 rate; 300 at 1000 rate. Write Wholesale Dept. for Prices on 500 or more.



"The Barrel Filler"

Black Ben "Trade-Mark"

Stark Early Elberta

Greatest Yellow Freestone Peach of the Century

Ripens Early Mid-Season

STARK EARLY ELBERTA—as developed by Stark Bro's Nurseries—is the yellow Peach of the Century. The huge golden globes of fruit it bears in such astonishing abundance are now famous wherever peaches are grown. The **genuine** Stark Early Elberta is a beautiful golden yellow, blending into a glorious red on the sunny side; a strong, protecting skin, covering a luscious flesh that is flavored with a juice as sweet as nectar. It is the finest eating peach in the world and it is also the finest canning peach. Clear golden juice—no red at pits when canned. It allures with its beauty, gratifies with its quality, and sells for top market prices everywhere. The peach lovers of the nation have put upon it the stamp of their approval, and it is today the most-talked-of and best-liked of all quality peaches.

Ripens 2 Weeks Earlier Than Old Elberta

As compared with old Elberta, it is larger, 10 days to 2 weeks earlier, more highly colored, decidedly better in quality, the World's Record Shipper, not so fuzzy, has a smaller seed, with none of the bitterness or coarseness so noticeable in old Elberta, and is not stringy.

In texture the **genuine** Stark Early Elberta is melting and buttery—not spongy and coarse as is often found in Elberta. It colors all over before it softens, which makes it ideal for distant shipments. The tree is much hardier than Old Elberta and will bear as many bushels as old Elberta or any other known variety.

From every standpoint of consumer and little and big fruit growers, the **genuine** Stark Early Elberta is to all other peaches what the genuine Stark Delicious is to all other apples. The discovery and development of both by Stark Bro's mark two giant strides toward the betterment of orchards and fruit growers' profits during our Century of Success.

"Congratulations on Early Elberta!"—Luther Burbank

The greatest horticultural genius of America shares our enthusiasm. He writes:

"Stark Early Elberta is one of the hand-somest, most shapely and beautifully colored of peaches. The quality fully carries out its appearance. A model peach! Congratulations!"

Why Stark Early Elberta Trees Thrive, Grow, Bear Very Young And Continue To Bear Very Heavily

"**STARK TREES BEAR FRUIT**" because all Stark Trees and particularly all Stark Early Elberta trees, have strong, healthy, disease-resistant bodies—perfect root systems and are in every way perfect. We reject tens of thousands of trees grown in our nurseries every year—and burn them if they are found imperfect. We sell only first quality stock, all culls and "seconds" go to the bonfire.

Best of 4,000,000 Varieties Tested 30 Years

Stark Early Elberta was selected as best by us after 30 years of experiment with nearly 4,000,000 peach seedlings.

The original Stark Early Elberta was developed from a Stark Bro's seedling tested out in the orchard of Dr. Sumner Gleason of Kaysville, Utah. From his original orchard—from genuine Record-Bearing Stark Early Elberta trees that bear extra quality fruit, we receive genuine Stark Early Elberta buds.

No one else can get them. Here is the proof:

"Stark Bro's N. & O. Co.

"Dear Sirs:

"This is to inform you that I have never supplied buds from the original Early Elberta tree or other trees of the same variety to any nursery except Stark Bro's, Louisiana, Mo.

"Very truly,

SUMNER GLEASON."

From these original, true-to-name buds are grown hundreds of thousands of Stark Early Elberta trees that go forth every year from Louisiana, Mo., to bring delight to all peach lovers—and marvelous profits to fruit-growers.

Brought \$6.00 Bu. in Ill.

"Stark Early Elberta sold at Mt. Sterling, Ill., for \$3.00 per bushel, and sold as high as \$6.00 in many instances."—R. M. Barnett, Brown Co., Ill.

Bore At 2 Years in Kansas

"My Stark Early Elberta trees bore their first crop at 2 years. It is the hardiest, most profitable and superior in quality to any other."—O. J. Taylor, M. D., Sedgwick, Kans.

Grow As Big As Pint Cup

"Stark Early Elberta in my orchard were larger than a pint cup and nearly 20 days earlier than old Elberta. Could not supply the demand."—S. W. Gray, Pendleton Co., Ky.

Bring 100 Per Cent More Than Old Elberta

"The fact that Stark Early Elberta reaches the market a week to 10 days ahead of original Elberta often makes a difference of 100 per cent increase on the market price. **There is no peach that compares with it for quality.** Its habit of young, hearty bearing makes it all that could be desired. Trees are vigorous and hardy."—U. F. Hansen, Logan, Utah.

Best Peach For Home Garden

"Genuine Stark Early Elbertas are the most satisfactory peaches we have ever grown in our thirty years of home fruit gardening. They are very fine and have an excellent color and flavor."—J. W. Murphy, Editor Saturday Post, Des Moines Co. Iowa.



Average specimen peaches grown in the same orchard under identical conditions and picked the same day—old Elberta peach at left—Stark Early Elberta at right.



Dr. Sumner Gleason

Holds World's Long Distance Shipping Record —Over 11,000 Miles Without Damage!

THIS is the famous Record-Breaking Long Distance Peach Shipment you have read about in your farm paper. The photo above shows opening a box of Stark Early Elberta after a journey of 11,509 miles. Six boxes shipped from Utah by Dr. Sumner Gleason to H. W. Collingwood, Editor Rural New Yorker. He re-shipped them to Dr. E. J. Wickson, Calif. Exp. Sta.,

who shipped them to E. H. Favor, Editor Fruit Grower, St. Joseph, Mo., who shipped them to us at Louisiana, Mo. They were in perfect condition, so we sent them on for a second visit to Editor Collingwood. He examined them and returned to us—completing a remarkable journey, 11,509 miles, without an ounce of ice, in good shape, and "crisp and juicy to the last."

Brings Top Prices in Tennessee

"I have Alton, Elberta Queen and Elberta Cling, but Stark Early Elberta leads them by long odds; about two weeks earlier than Elberta Queen. We have a number of fine sorts, but Stark Early Elberta brought 50c per bushel more than any of them."—A. N. Nesbitt, Humphreys Co., Tenn.

2-Year Trees Bear Half Pound Peaches

"The Stark Early Elberta is 'some' peach. I grew six half-pound peaches on two-year-old genuine Stark Early Elberta Trees (from Louisiana, Mo.), planted two years ago last April—big beauties, certainly."—D. J. McCracken, Contributing Editor Live Stock World, Paxton, Ill.

"Brings Me More Money Than Anything Else I Grow!"

B. Carine, Connecticut's greatest peach grower, landed in Connecticut 25 years ago with \$22 in his pocket. Today he owns immense orchards containing 100,000 fruit trees, owns 4000 acres of fruit land and has the largest peach orchards in Connecticut. He writes: "I would rather have an orchard of genuine Stark Early Elberta than any other variety of peach. It brings me more money than anything else I grow. I have received at the rate of \$2.70 per crate when the old Elbertas were averaging the same season only \$1.50.

"Genuine Stark Early Elberta comes on the market about a week or ten days ahead of old Elberta when the market is right, with no other peaches to spoil the market.

"It is by far the best quality yellow peach grown anywhere—extremely hardy, sure bearers.

"I am planting genuine Stark Early Elberta heavily. Four years ago I planted 700 trees, the next year 2000, last year 4000, and this year I wanted 5000 or 6000 more but Stark Bro's were sold out and I got my order in too late to have it filled.

"I have stopped planting old Elbertas altogether and am going to stick to genuine Stark Early Elbertas. I can't afford to grow old Elbertas, when I know from experience that the Stark Early Elbertas are much more profitable."

Be Sure You Get Genuine Stark Early Elberta

The claims made on this page refer only to genuine Stark Early Elberta trees, coming from Stark Bro's at Louisiana, Mo. Genuine Stark Early Elberta trees from Stark Bro's carry the individual labels with the autograph signature of Dr. Sumner Gleason, who planted the original Stark Early Elberta tree, sent to him by Stark Bro's.

Stark Bro's Exclusive Contract for Early Elberta

In consideration of \$..... the said Sumner Gleason (the originator of Stark Early Elberta) does hereby grant, assign and set over unto Stark Bro's the exclusive right and control of all stock and buds of the original tree to the sole use and control of Stark Bro's; said Sumner Gleason agrees to personally supervise the cutting of buds from original bearing tree or any parent tree.

STARK EARLY ELBERTA PEACH PRICES

RECORD BEARING	Each	10	100	1000
1st Class Stark Trees	rate	rate	rate	rate
4 to 7 ft. size	\$.95	\$.90	\$.80	\$.60
3 to 5 ft. "	.85	.80	.70	.50
2 to 3 ft. "	.75	.70	.60	.40

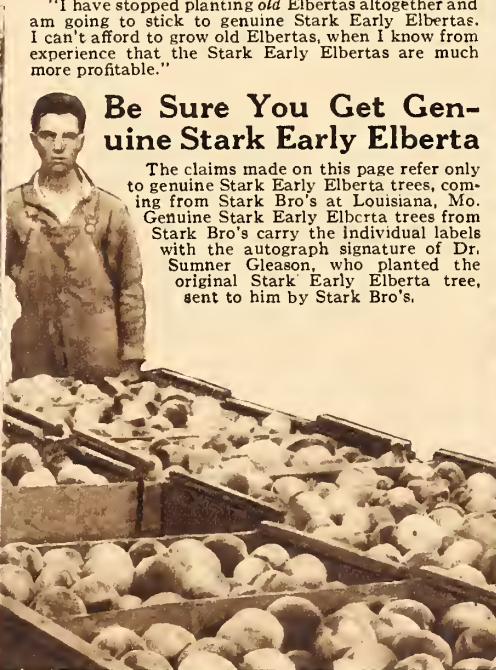
Prices F. O. B. Nursery

Less than 10 go at "each" rate; 30 to 299 at 100 rate; 300 or more at 1000 rate. Write Wholesale Dept. for Prices on 500 or more.



C. W. Fette's (Mo.) Loaded 2-Year-Old Stark Early Elberta (above)

Enormous Stark Early Elbertas on way to Packing Sheds—Old Elbertas in this orchard were still green.

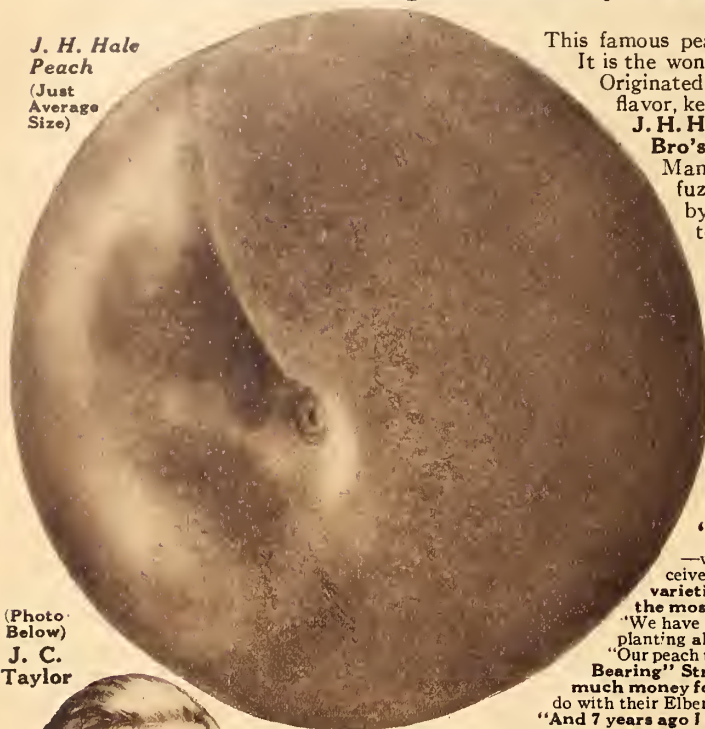


Original Stark Early Elberta tree—loaded to ground—See our Exclusive Contract above.

The Big J. H. Hale Peach—

Now Being Planted By Tens of Thousands of Growers

J. H. Hale Peach
(Just Average Size)



This famous peach is a *Mid-Season ripener*—ready to be picked just before Elberta. It is the wonderful yellow *Freestone* that has been talked about all over the nation. Originated by Mr. J. H. Hale, "The Peach King." In size, color, fuzzless skin, texture, flavor, keeping and shipping qualities, J. H. Hale surpasses old Elberta. (The first, **J. H. Hale trees ever grown in nursery rows were, however, grown by Stark Bro's—See Page 3**). Often sells for \$5.00 per bushel when Elberta brings \$3.50. Mammoth in size, vivid carmine over golden yellow, almost perfectly round, fuzzless and smooth as a glove. Commands instant attention on all markets by its Giant size and glorious color. Flesh solid like a cling, yet melting, tender, free from grain and stringiness, is of **exquisite peachy flavor**—without any of the bitter tang of Elberta; almost as firm as a clingstone.

Former R. R. Man Grows Amazing J. H. Hales on \$10 Land—On Stark Trees

The photo of tree at left (bottom) shows crop of 4-year-old J. H. Hale Tree in orchard of J. C. Taylor, Ross Co., Ohio. He was a railroad car inspector 7 years ago. Inspired by reading a Stark Fruit Book, he bought 30 acres of cheap, thicket land for \$10. an acre—on 5 years' time. He planted it to Stark Trees (including Stark Delicious and Stark Golden Delicious, later Starking) and used J. H. Hale and Stark Early Elberta peach trees as fillers.

His J. H. Hale peaches (from Stark Trees) were the finest shown at the Ohio State Hort. Soc. meeting. **They sold for 25 cents per peach and the demand was greater than the supply.** (See article from Columbus, O., Citizen near peach basket cut below.)

"I Give The Credit Of My Success To Stark Trees!"

—writes J. C. Taylor, Ross Co., Ohio (photo above loaded tree). "And the advice I received from Stark's in regard to the selection of varieties. I planted some of the old time varieties from other nurseries, but they never amounted to anything. In fact, I cut the most of them out last fall.

"We have planted 40 acres more just north of Springfield and intend to plant 60 acres more. Are planting all Stark "Record Bearing" Strain Trees.

"Our peach trees began bearing 3 years ago—and we have picked 3 crops from them. Your "Record Bearing" Strain J. H. Hale and Stark Early Elberta are certainly wonders. I get twice as much money for my peaches grown on Stark "Record Bearing" Strain Trees as the other fellows do with their Elbertas and old time varieties.

"And 7 years ago I didn't know any more about a fruit tree than I did about an aeroplane."

(Photo Below)
J. C. Taylor

A Wonderful Shipper

J. H. Hale's shipping ability is really marvelous—have been actually shipped in barrels like potatoes—1,000 miles and arrived in good condition. Tree a stocky grower, often bears at 2 years old. Bears heavily and has proved its adaptability to a wide range of soils and climates but does best, properly pollinated, in good land. The N. J. Exp. Sta. says:—"From our experience J. H. Hale is a much superior peach commercially to Elberta—and an extraordinarily good shipper."

Has Yielded As High As \$1,420.00 Per Acre

J. H. Hale trees have yielded such enormous crops of such fancy fruit that they have actually produced the astonishing profit of \$1,420.00 per acre on one year's crop. Quoting from Southern Farming: "From this one acre of J. H. Hale trees, we harvested 748 bushels, which would make practically 1,500 full peach baskets and 1,000 six-basket crates; 95% of this fruit was in first class, merchantable condition and sold the next morning at an average of 60% higher than the Elberta."

Free From Disease

"The J. H. Hale is the greatest peach I ever saw. Must say they are better than anything else I have. Your Hale trees are absolutely free from any disease."—Jas. M. Mount, Montgomery Co., Md.

"Can You Beat These Peaches—Big As Cantaloupes!"

—From Columbus (Ohio) Citizen

Here's part of the enthusiastic praise of J. C. Taylor's J. H. Hale Peaches (grown on Stark Trees) published in the Columbus Ohio Citizen last September 19: "**Peaches as big as cantaloupes**—that is what you see in this basket (below). These (J. H. Hale) peaches were grown by J. C. Taylor on the north side of a big hill in northwestern Ross Co. Some are almost 5 inches in diameter. Experts pronounced them the finest they had ever seen and expressed the opinion that these peaches were the finest in the world. Mr. Taylor disposed of his fruit at 25 cents per peach."



A Bushel Basket of Hales

A 4-year-old J. H. Hale Tree (from Stark Bro's) in orchard of J. C. Taylor, Ross Co., Ohio. See size of peaches in bushel basket at right.

"Peaches as Big as Cantaloupes" (That's what the Columbus, Ohio CITIZEN said about these J. H. Hales grown by J. C. Taylor on Stark "Record Bearing" Strain of J. H. Hale Trees. See article above.)

—The "Million Dollar Peach"!

Plant Stark Bro's "Record-Bearing" Strain

Here is one yellow peach that we consider fit to become the team-mate of Stark Early Elberta, the greatest of all yellow peaches.

This new peach is as far superior to old Elberta as Black Ben is superior to old Ben Davis. In fact, the experience of our customers proves that we are correct in looking on the J. H. Hale as being the money-making "Black Ben" of peaches, just as truly as Stark Early Elberta is the "Stark Delicious" of peaches.

In size, color, texture, keeping and shipping qualities both the Stark Early Elberta and J. H. Hale far surpass the old Elberta.

First Nursery To Fruit J. H. Hale

We grew our first 13,000 crop of J. H. Hale trees in 1911-12—years ago, before J. H. Hale trees were generally known. All of these trees were sold to Mr. J. H. Hale himself.

We were the first nursery to fruit the J. H. Hale peach.

Our propagation of "Record-Bearing" Strain J. H. Hale trees is direct from the one J. H. Hale of best record over years of test—best record for size of crop, regular bearing, *hardiness* of tree and size, flavor and beauty of fruit.

Better Keeper Than Old Elberta

In its keeping qualities it again surpasses old Elberta. "You will be interested in knowing that the specimen of J. H. Hale grown at Louisiana, Mo., which you sent me sometime ago, has remained here on my desk 16 days. It is in first-class condition in every way. Its flavor was just as good as ever," writes E. H. Favor, Editor of FRUIT GROWER AND FARMER.

Far Larger Than Old Elberta

In size of fruit, it makes the biggest old Elberta look small. J. H. Hale peaches often average from one-third to one-half again as large as old Elberta. We have picked bushels of Stark Bro's grown "Record-Bearing" Strain J. H. Hales in our own orchard that ran from 3½ to 4 inches in diameter.

Very Vigorous, Sturdy Trees

The Stark methods of growing and of selection and rejection insures the vigor of every tree that Stark Bro's send out.

The Stark Tree Tag attached to a J. H. Hale tree is further assurance that the J. H. Hale trees you buy of us will prove vigorous, productive and true to name. The J. H. Hale tree is a good grower and stocky. Its buds are hardy, having withstood temperatures of 22 degrees or more below zero. Furthermore, thousands of genuine J. H. Hale trees have proven their adaptability to a wide range of soil and climatic conditions. They have been planted every place that peaches grow during the past few years—have been tested out in orchards of the U. S. and have "made good."



Basket of Big J. H. Hale A Great Shipper



A young J. H. Hale tree in Stark Bro's orchards. Enormous Red and Gold Peaches and Wonderfully Solid. Note the Size—Bigger Than a Baseball.

Warning—Peach Trees

Are Very Scarce This Year

We warned you a year ago that a shortage of peach trees would occur this year.

Few realize the huge quantities of peach seed required every year to grow young peach trees. We use many carloads of native natural mountain seed (the best) every year. 2 years ago there was a very short peach crop. Therefore, a shortage of seed for nurseries. Luckily for us—and you, our customers—we had a full supply. Most nurseries did not.

We can supply your wants THIS Fall—and, also this Spring. But, We Are Sure To Sell Completely Out Of The Most Popular Varieties. Better Be Safe! ORDER NOW for delivery this Fall or this Spring!

J. H. HALE PEACH PRICES			
RECORD	Each	10	100 1000
1st Class	rate	rate	rate rate
4 to 7 ft. size...	\$.95	\$.90	\$.80 \$.60
3 to 5 ft. " "	.85	.80	.70 .50
2 to 3 ft. " "	.75	.70	.60 .40
Prices F. O. B. Nursery			
Less than 10 go at "each" rate; 30 to 299 at 100 rate; 300 at 1000 rate. Write Wholesale Dept. for Quantity Prices on 500 or more.			

OLD OAK PROCESS Whole Root Trees



A field of 500,000 J. H. Hale trees (photo May 15)—all propagated from J. H. Hale Parent Tree of Best Bearing Record.



The same block of J. H. Hale trees (on Sept. 15) showing 5 feet growth in 4½ months. Extra big, fine trees this year.

All Peaches Pictured (6 Big Trees) for Only \$4

Our GOLD MEDAL Collection

6 Finest YELLOW Peaches \$4.00

JUNE ELBERTA *Earliest Yellow Semi-Freestone.* (Introduced by Stark Bro's). The earliest ripening peach of the Elberta type—ripens at the same time as Red Bird Cling. By planting June Elberta, Stark Early Elberta, J. H. Hale, Elberta (our improved Stark Strain), Elberta Cling, Late Elberta and Krummel October, you are assured a succession of glorious yellow peaches from June till heavy October frosts. It is a big, handsome peach that ripens with the very earliest—and **resists rot.** Because of rich yellow color, large size, good shipping qualities and **Extreme Earliness** it brings top prices. Enormously productive, young bearer, vigorous. *Extremely hardy. Thrives* wherever peaches grow.

Wm. H. Welch, Salem, Mo. reports: "Half bushel to three pecks June Elberta on 2-year-old tree. By far the best early peaches I ever saw. They ripen evenly, the flavor is fine and the flesh is a deep rich yellow clear to the seed."

B. Carine, the Peach King of Connecticut, writes: "One of the heaviest bearers in my orchard—a great money maker." **Ripens 34 days before Elberta.** *Very hardy. (Price, 10c Extra).*

Stark Early Elberta *Greatest Early Yellow Freestone.* (Introduced by Stark Bro's). The greatest of the Elberta type. See pages 18 & 19 for full description and Prices. **Ripens 14 days before Elberta.** *Very hardy.*

ELBERTA CLING *Mid-season Yellow Peach.* (Introduced by Stark Bro's). An Elberta—with all the Elberta characteristics of heavy bearing, great size, except it is a cling-stone, of splendid flavor. It is an exceptionally fine cling—and as such always will demand a big price on the market. It is a fine shipper and tremendous producer. J. C. Blythe, Buchanan Co., Mo., reports: "From 6 trees I gathered more than 100 baskets." Profitable because **good cling peaches are always scarce.** Ideal for pickling, canning and preserving.

The tree is a sure cropper—bears heavily—and has never disappointed us in many years in our orchards. **Ripens 3 days before Elberta.** *Hardy.*

J. H. Hale *Mid-season Yellow Freestone.* The wonderful money-making team-mate of Stark Early Elberta. See pages 20 & 21 for full description and Prices. Ripens same time as Elberta or can be picked a few days earlier—*Hardy.*

ELBERTA (STARK STRAIN) *Mid-season Yellow Freestone.* For years the standard peach for commercial orchards. Many years of experimenting, observing and testing enable us to offer peaches of the Elberta type ripening throughout the season. Plant June Elberta, Stark Early Elberta, J. H. Hale, Late Elberta, October Elberta and Krummel October for big profits. Our Stark Strain of Elberta is a larger, superior one—*Hardy.*

KRUMMEL OCTOBER (Greatest of all late Peaches). *Latest Yellow Freestone.* (Introduced by Stark Bro's). This yellow, *freestone* peach ripens after **all other good peaches are gone**—reaches markets at the time when it **has no competition!** Always brings highest prices. Krummel is immense in size—almost as round as J. H. Hale, deep yellow, with a blush of carmine on the sunny side. No peach is sweeter or better—no bitterness whatever next to the pit. Flesh firm and of fine texture—ships perfectly. Has quality almost equal to Stark Early Elberta which is the finest of all peaches man can grow. **Ripens 40 days after Elberta.**—*Hardy.*

OTHER YELLOW FLESHED VARIETIES

Late Elberta *Late Yellow Freestone.* Best sort ripening between Hale and Krummel. Looks exactly like Elberta—far better flavor. Fine shipper. Comes on market when yellow peaches bring top prices. Tree fine in growth, bearing, hardness. **Ripens 14 days after Elberta.** *Hardy. (10c above regular peach tree prices).*

Capt. Ede *Mid-season Yellow Freestone.* Large, excellent shipper. *Hardy.*

Golden Sweet Cling *Mid-season.* Better than any Lemon or Orange Cling. One of the juiciest, sweetest of all clings. Ripens 4 days after Elberta. *Hardy. (5c Extra).*

October Elberta *Very Late Yellow Freestone.* A big, handsome peach that looks like Elberta but is larger. Quality better. Our propagation is from a Record-Bearing Parent Tree. Comes in just ahead of Krummel and is profitable. Ripens 26 days after Elberta. *Hardy. (10c Extra).*

Crawford Early Improved *Early Yellow Freestone.* Better quality and harder than old Crawford Early—the best peach of this type. *Hardy.*

Japan Golden Giant *Yellow Clingstone.* Propagated direct from Japan Experiment Station No. 2 imported by us 10 years ago. Immense size, beautiful yellow, marbled with red. Quality delicious—juicy, sweet, pure golden flesh. Bears heavily. Ripe 9 days before Elberta. *(Price, 5c Extra).*

Crawford Late Improved *Late Yellow Freestone.* Larger, better quality, harder, surer bearer than old Crawford Late. *Hardy.*

Other Yellow Sorts Arp, Beauty Salway, (5c Extra), Wilma, Worth, Shipper's Late Red. (10 Extra).

RED FLESHED PEACH

Big Indian Blood Cling *Mid-season Red Flesh.* Biggest, handsomest peach of all the Blood Clings. (10c Extra).

Krummel October

Stark Early Elberta

Elberta Cling

Elberta Stark Strain

Krummel October

Collection No. 9
"GOLD MEDAL" Peaches
All 6 Varieties Pictured
Only \$4—Largest Trees

J. H. Hale

Our SILVER MEDAL Collection

6 Best WHITE Peaches \$4.00

All Peaches Pictured (6 Big Trees) for Only \$4

Red Bird Cling *Best very early white peach* (Introduced by Stark Bro's). The first big peach (as large as Elberta) that is ready for market. Bert Johnson, the Peach King of Arkansas, who harvested over 1,000 carloads of peaches from his 4,600-acre orchard this last year, despite country-wide frosts and freezes, received \$4.00 to \$4.50 per bushel for his Red Birds.

It has been a sensation almost from the year that we introduced it. Bright, glowing color—"red as fire"—with creamy snow-white flesh of fine firmness (unlike some extremely early peaches) which makes it a wonderful shipper. Exceptionally free from rotting.

Coming onto the market (so very early) this magnificent peach finds folks keenly hungry for fruit. The prices Red Birds bring are phenomenal. **Ripens 45 days ahead of Elberta.** *Very Hardy.*

Alton *Early White Freestone* (Introduced by Stark Bro's). Wonderfully colored, white fleshed freestone. Sweet, juicy, luscious. We introduced Alton—and it has scored a sensational success. Tree extremely vigorous, *hardy*. Recently when 32 degrees below zero killed practically all peach crops, Alton made crop. "Alton trees have borne every year since they came into bearing. I know one grower who has had Altons 8 or 9 years, which missed but one crop." —U. L. Coleman, a South Missouri orchardist.

Stark Heath Cling *Very Late White* (Introduced by Stark Bro's). Our own strain of Heath Cling. Michigan Experiment Station declared this peach to be more than 100 per cent more productive than the old Heath Cling.

We have been growing this strain for many years and use it exclusively in our own plantings. The fruit is tender, melting, juicy and most luscious. Ships splendidly. **Ripens 40 days after Elberta.** *Hardy.*

Eureka *Early White Freestone* (Introduced by Stark Bro's). Hardest white freestone peach. Has even borne fair crop after 32 degrees below zero freeze totally destroyed all other buds. Beautiful, rosy-cheeked, with milk-white flesh of delightful flavor. **Ripens 35 days ahead of Elberta.** *Hardest.*

Stark Summer Heath *Mid-season White Cling.* Creamy white peach of Heath type. Snow white flesh clear to pit. Large, handsome, luscious and sweet—a wonder for canning, requires very little sugar. *Extremely hardy.* Sure bearer. **Ripens 7 days after Elberta.**

Illinois *Mid-season White Freestone* (Introduced by Stark Bro's). Large, handsome, ruddy-cheeked peach, pure white flesh, juicy, spicy, highest flavor. Exceptionally hardy. Free from rot. Ships splendidly.

OTHER WHITE VARIETIES

PEACH PRICES, PAGES 22 and 23
(Except Stark Early Elberta and J. H. Hale)
RECORD BEARING
1st Class Stark Trees

	Each	10	100	1000
	rate	rate	rate	rate
4 to 7 ft. size	\$.90	\$.85	\$.75	\$.50
3 to 5 ft. "75	.70	.60	.40
2 to 3 ft. "65	.60	.50	.30

Prices F. O. B. Nursery
Less than 10 go at "each" rate; 30 to 299 at 100 rate; 300 at 1000 rate. Write Wholesale Dept. for Prices on 500 or more.

Belle of Georgia
Mid Season White Freestone.
Large size, bright red blush, flesh rich creamy white, delicious. A big money maker. We propagate from a special Record Bearing Tree that bears tremendous crops. **Ripens 8 days before Elberta.**

We also supply trees of Carman, Champion, Crothers Late, Early Mamie Ross, Early Rose, Hyslop Cling (5c Extra), Mammoth Heath, Martha Fern Cling (5c Extra), Mayflower, Old Mixon Free Improved (5c Extra), Hiley Imp. (5c Extra) and Washington.

Stark Heath cling

Illinois

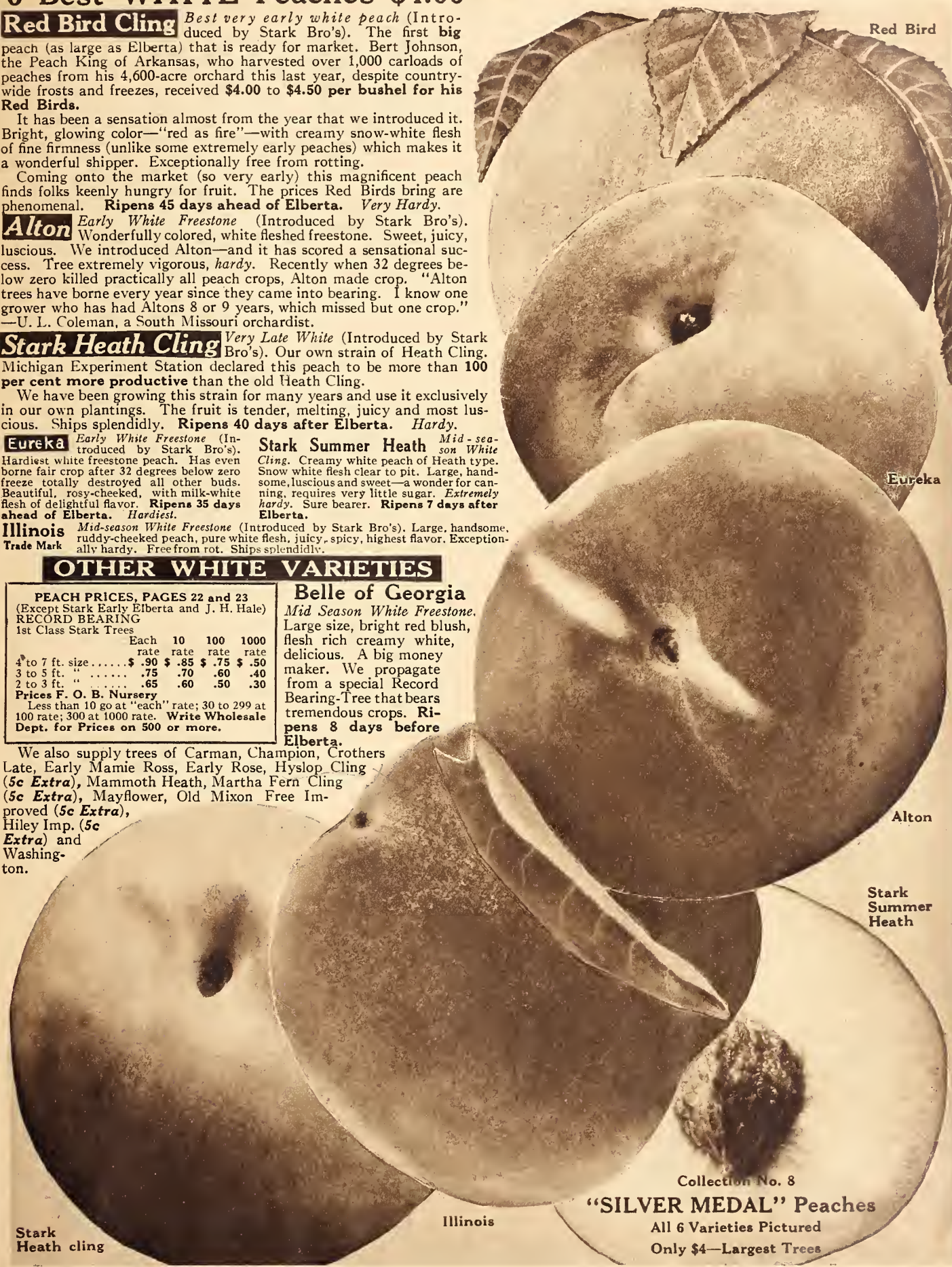
Red Bird

Eureka

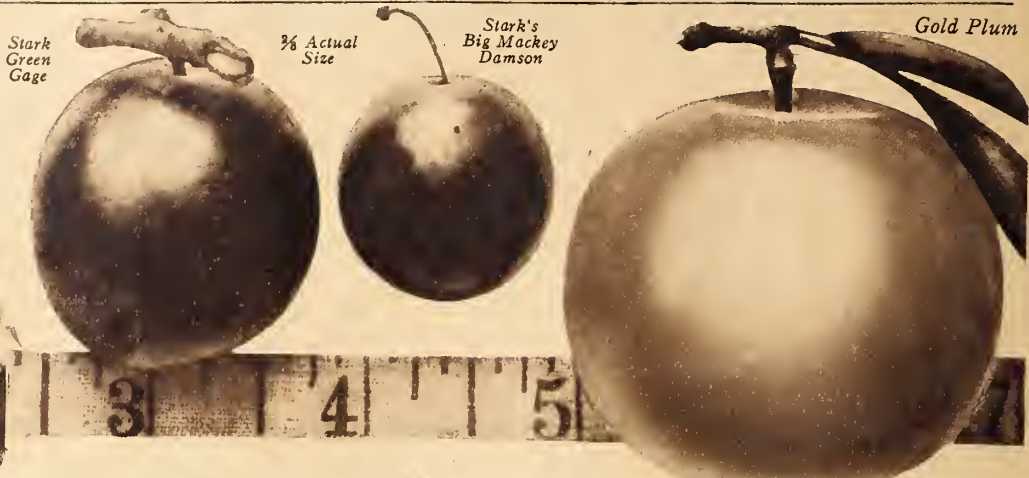
Alton

Stark Summer Heath

Collection No. 8
"SILVER MEDAL" Peaches
All 6 Varieties Pictured
Only \$4—Largest Trees



A branch of Abundance from H. B. Fullerton, Long Island Experimental Station



World's Best Plums

Gold (Trade-Mark). Our \$3,000.00 Plum. *Mid-season Hybrid*. Our wonderful Gold Plum has created a greater sensation and made more friends among Plum growers than any other variety ever introduced. Luther Burbank who originated Gold Plum, says—"The most remarkable fruit known—the best plum ever produced." Fruit very large, clear, semi-transparent, light golden yellow, later nearly overspread with a carmine flush. Tree does best in chicken yards and on moderately dry, thin or clay soil; strong, healthy and one of the *hardest*. Buy the genuine Stark Gold from Stark Bro's., the Exclusive Introducers and Owners. Succeeds everywhere—the ideal all purpose plum. Our genuine strain has a wonderful Bearing Record.

Omaha *Late season. Hybrid. "Ironclad Hardiness."* Originated in Nebraska by Theodore Williams. He considered Omaha best of all. Very large, dark rich red, pit small, flesh meaty, sweet and *delicious*. Tree sturdy, *hardy*, bears tremendous crops. Our propagation is from a Heavy Record Bearing tree that has been under observation for years.

STARK DAMSON (Big Mackey). *Late season. European*. The largest and best Damson originated in Pike Co., Mo., as Big Mackey, and propagation is from a second generation tree that bears tremendous crops and extra size fruit. Deep purple, juicy, rich, small stone, fine for preserves.

STARK GREEN GAGE (Missouri). *Late season. European*. This *Delicious* variety was originated by us and propagation is from a Record-Bearing Tree on our grounds. The best, sweetest eating plum—a home or market orchard is not complete without it. Should be grown everywhere.

GERMAN PRUNE. *Late season. European*. Largest, best, Heavy Bearing Strain. Excellent for dessert and preserving; dark blue, juicy and *delicious*. Tree *hardy* and dependable. More Prunes should be grown in all sections—and this Stark Strain of the famous German Prune is unquestionably the best and finest of the variety.

ABUNDANCE. *Early. Japanese*. A popular large rich red plum, pure Japan, firm, sweet and excellent quality; ships well. *Hardy*, and very productive. Father of America and Gold—two best plums.

EARLY GOLD (Shiro). *Very Early. Hybrid*. A pure transparent golden yellow plum, large and handsome—a huge honey-drop; sweet excellent quality. *Tree hardy, bears regularly, immense crops*, and is satisfactory in every way. A tree loaded with this golden fruit is a wonderful sight. Propagated from a Heavy Bearing Strain on our own grounds. Another Burbank production that has made good. It is a great favorite in the South because of its high resistance to fungus diseases.

DAMSON SHROPSHIRE. *Late season*. Most widely known of Damsons—though smaller than Stark Damson. Our propagation from a Heavy Bearing Strain. Trees bear enormous crops.

LATE GOOSE. *Late Native*. One of the best *Hardy* sorts of over 100 Natives tested in our Orchards. Introduced by us. Larger, more valuable and ripens later than Wild Goose.

America. *Early. Hybrid*. Large, glossy, coral red. One of the most popular varieties. America, Indian Blood, Gold, Early Gold, Stark Green Gage and Omaha are the five best plums for territory east of the Rocky Mountains. Beautiful as a plum can be, quality unsurpassed. Always in demand and prices are always good. Tree is large, very vigorous, *thoroughly hardy*, comes into bearing extremely young (often at 2 years) and *bears enormous crops every year*. "The Plums of New York," the greatest plum book ever published, says: "America is almost phenomenally free from rot."

SANTA ROSA. *Early. Hybrid*. Produced by Luther Burbank; won Gold Medal at Lewis & Clark Exposition. One of the largest, most beautiful, most *delicious* and most valuable of all Plums. Glorious dark crimson, immense size, almost round, strong skin, holds up and ships perfectly. Our propagation from a great record tree.

INDIAN BLOOD (Duarte). *Mid-season. Hybrid*. One of our Big Leaders and grown from a Record Tree of finest type. Set more fruit on 2-year-old trees than any other Plum. Large, egg-shaped, *flesh deep blood red*. Quality *delicious*. Trees upright, fastest growth, *hardy*, highly recommended. Should be planted everywhere.

MAMMOTH GOLD. *Very Early. Hybrid*. Fruit beautiful, and sweet clear to the pit; resistant to rot. Bears young, regularly and heavily.

OTHER PLUMS. We can also supply: Red June, Burbank, Compass, Lombard Improved, *10c extra*.

PLUM PRICES

RECORD BEARING 1st Class Stark Trees	Each	10	100	1000
4 to 7 ft. size	\$1.25	\$1.10	\$1.00 \$.70
3 to 5 ft. "	1.00	.90	.80 .60
2 to 3 ft. "80	.75	.65 .40

Prices F. O. B. Nursery

Less than 10 go at "each" rate; 30 to 299 at 100 rate; 300 at 1000 rate. Write Wholesale Dept. for Prices on 500 or more.



"America" Plum—Full Brother of Gold

Lincoln Pear —
Most Delicious
of all.

Pears



Famous Anjou and Bartlett orchard of Capt. J. H. Shawhan, who says: "Anjou commands high prices; less liable to blight than any other; 1 3/4 acres netted me \$1400.00." A well-cared for Pear Orchard Pays Big Profits. Lincoln is an Ideal Variety to Plant with Anjou.

LINCOLN—King of All Pears

Late Summer. Our propagation came direct from the Original Lincoln Tree on the grounds of W. E. Jones, Logan County, Illinois. Our Record-Bearing strain tree is a tree grown directly from Original Tree Buds, and has shown wonderful crops. Fruit large, resembles Bartlett, clear, beautiful yellow, sometimes blushed—ideal shipper; quality superb—even better than Bartlett. Tree remarkably blight resistant, heavy cropper, long lived—original tree still bore when over 80 years old. "I bought Lincoln trees from 3 nurseries and have 3 different pears, all labeled Lincoln. Yours are the only genuine Lincoln."—Jas. Houselman, Platt Co., Ill.

Lincoln is Blight Resistant—"Lincoln more blight resistant than any other; equals Bartlett in flavor and texture.—J. W. Jones, Emmet Co., Idaho.

QUINCE

VAN DEMAN QUINCE (Trade-Mark). Best and largest quince—"The Golden Apple of the Hesperides." Van Deman is our great \$3,000.00 Quince secured from that greatest horticultural master—Luther Burbank, thirty years ago. Of superb flavor, immense size, a tremendous cropper, hardy, healthy, fine for baking, preserves, jelly and canning.

QUINCE PRICES			
RECORD-BEARING Strain	Each	10	100
1st Class Stark Trees	rate	rate	rate
4 to 7 ft. size	\$1.75	\$1.60	\$1.40
3 to 5 ft. "	1.50	1.30	1.20

Prices F. O. B. Nursery.
Less than 10 go at "each" rate; 30 to 299 at 100 rate; for 300 or more, Write Wholesale Department for Quantity Prices.
Stark Bro's, Louisiana, Mo.

APRICOTS

STELLA APRICOT. *Early Summer.* Large improved hardy Russian variety. Propagated from best Parent Tree on record.

SUPERB APRICOT. *Early Summer.* Also a large hardy Russian variety. Tree exceptionally thrifty.

APRICOT PRICES			
RECORD-BEARING Strain	Each	10	100
1st Class Stark Trees	rate	rate	rate
3 to 5 ft. size	\$1.50	\$1.30	\$1.20
2 to 3 ft. "	1.25	1.10	1.00

Prices F. O. B. Nursery.



A backyard Van Deman Quince Tree—as usual loaded to the ground with immense fruit.

ANJOU. *Late Fall.* We propagate from special Record-Bearing Mo. Tree selected as Parent Tree. Large, handsome, yellow pear blushed dull red; late keeper, rich flavor. Good bearer, strong grower, hardy, bears young, blooms late, remarkably free from blight.

STARK SECKEL (Sugar Pear.) *Late Summer.* Medium sized fruit, beautiful yellow with red russet cheek. Spicy honeyed flavor—incomparable in quality. Resistant to blight. Our own select strain. Tree hardy, thrifty and long-lived. Should be in every home orchard.

BARTLETT. *Summer.* A great favorite. Large, rich, golden yellow with soft blush; juicy, melting, with a rich, indescribable flavor. One of best for canning and shipping. Tree strong grower, sometimes blights, bears young. A tree in our Test Orchard which withstood blight best, and noted for its immense crops of big Bartletts, is the Record-Bearing Parent Tree.

FAME. *Late Summer.* Juicy, melting, sweet and rich. Seeds few, almost no core; large, blushed yellow. Hardy, strong, long-lived tree; young bearer. Blight resistant. Introduced by us. Our Original Tree Strain is hardy. 25c Extra.

DUCHESS (Angouleme). *Fall.* Extremely large, often weighs over a pound; dull yellow, excellent quality. Long lived, healthy, hardy, bears extremely young, produces crop every year.

KIEFFER. *Winter.* Large, rich, golden yellow, sometimes tinted red. Sure bearer. Fine for canning and baking.

STARK TYSON. *Very Early Summer.* Looks like Seckel, medium size, sweet, juicy, excellent. Hardy, long lived, blight resistant.

PEAR PRICES			
RECORD-BEARING			
Strain 1st Class	Each	10	100
Stark Trees	rate	rate	rate
4 to 7 ft. size	\$2.00	\$1.80	\$1.60
3 to 5 ft. "	1.50	1.30	1.20

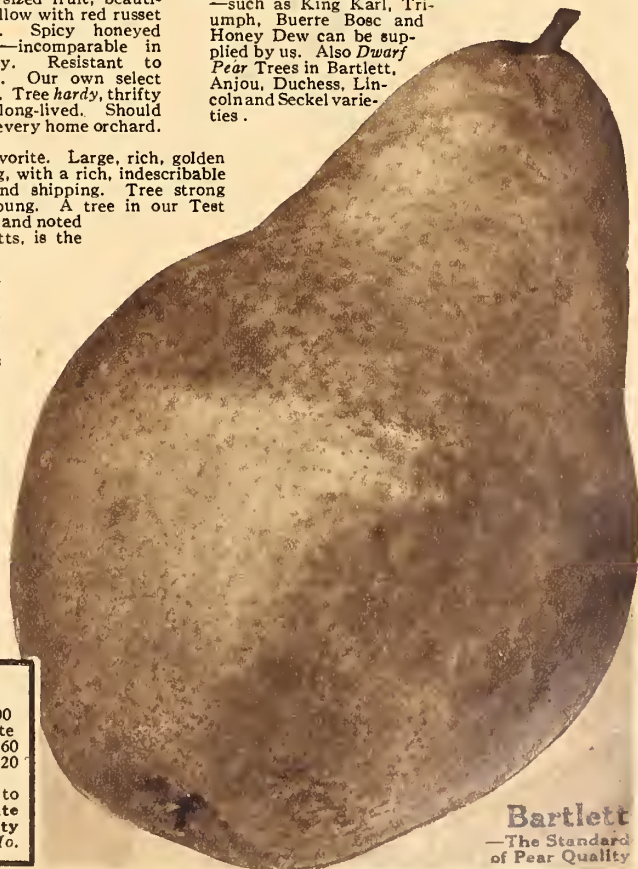
Prices F. O. B. Nursery.
Less than 10 go at "each" rate; 30 to 299 at 100 rate; for 300 or more Write Wholesale Department for Quantity Prices.
Stark Bro's, Louisiana, Mo.

LINCOLN PEAR PRICES			
RECORD-BEARING Strain	Each	10	100
1st Class Stark Trees	rate	rate	rate
4 to 7 feet size	\$2.50	\$2.30	\$2.00
3 to 5 feet "	2.00	1.80	1.60

Prices F. O. B. Nursery.
Less than 10 go at "each" rate; 30 to 299 at 100 rate; for 300 or more Write Wholesale Department for Quantity Prices.
Stark Bro's, Louisiana, Mo.

OTHER PEAR VARIETIES

—such as King Karl, Triumph, Buere Bosc and Honey Dew can be supplied by us. Also Dwarf Pear Trees in Bartlett, Anjou, Duchess, Lincoln and Seckel varieties.



Bartlett
—The Standard
of Pear Quality

Stark GOLD Cherry



Glorious Stark Gold (Trade Mark) Cherry

At last, a delicious sweet cherry that is *really hardy*. Stark Gold Cherry came from Richardson Co., Nebraska, and was introduced by Stark Bro's. We quote Mr. Thomas, the originator: "Surpassed in hardiness any cherry on my place; thermometer often registers 40 degrees below zero, and average winter reaches 25 to 30

below. Stark Gold never misses a crop. Sells for 3 times the price of other cherries." Fruit is of immense size, **glossy, almost transparent, pure, lustrous golden color** without a single touch of red, and the **quality is superb**. Ripens about 2 weeks later than Early Richmond, but will hold on to the tree 10 days after ripening. Cherry growers throughout the whole country are enthusiastic over this wonderful sweet cherry, and we have never been able to grow enough to supply the demand.

Montmorency Cherry



Our Exclusive Contract

"In consideration of \$..... said C. J. Thomas hereby agrees to furnish said Stark Bro's all buds, etc., from said Stark Gold Cherry Tree and give said Stark Bro's exclusive right and control of all buds, etc.

STARK GOLD CHERRY PRICES			
RECORD-BEARING	Each	10	100
1st Class Stark Trees	rate	rate	rate
4 to 7 ft. size	\$2.50	\$2.30 \$2.00
3 to 5 ft. "	2.00	1.80 1.60
Prices F. O. B. Nursery.			
Less than 10 go at "each" rate; 30 to 299 at 100 rate; for 300 or more, write Wholesale Department for Quantity Prices. Stark Bro's, Louisiana, Mo.			

Montmorency Stark

Mid-Season. Best strain Montmorency. From a tree on our grounds which uniformly bears very large fruit—larger than any other Montmorency. Tree stronger grower than Montmorency King (Ordinaire). Fruit large, flesh firm, ships perfectly; tree strong grower, sure and young bearer, largest of all the sour cherries, *very hardy*; produces tremendous money-making crops. It is the perfect variety for pies, preserves, cobbler, puddings and other good "eats." The Montmorencys are the best "so-called" sour or pie cherries—they are not really sour, for Montmorency when fully ripe is sweet and luscious, the favorite of the children. They are the most perfect in tree, resist disease, less affected by wet weather, most productive and bear best fruit of all the sour.

SOOR CHERRY PRICES				
<i>(Sweet Cherries are 25c Extra)</i>				
RECORD	Each	10	100	1000
1st Class Trees	rate	rate	rate	rate
4 to 7 ft. size	\$1.75	\$1.60	\$1.40 \$1.00
3 to 5 ft. "	1.50	1.30	1.20 .90
Prices F. O. B. Nursery				
Less than 10 go at "each" rate; 30 to 299 at 100 rate; 300 at 1000 rate. Write Wholesale Dept. for Prices on 500 or more.				

PAUL STARK Examining 2-Year Old Stark Gold Bearing Good Crop. The introduction of this great variety gives to the north a sweet cherry of superb quality.

Cherries



Montmorency Cherry Orchard on Stark Nursery grounds—produced 2,350 gallons per acre, sold at 40c a gallon—\$940,00 an acre.

Delightfully Rich, Juicy CHERRIES

"The man who doesn't plant cherry trees doesn't deserve cherry pie."—Mrs. H. W. Jenkins, before Missouri Horticultural Society.

Bing *Sweet.* One of the most delicious sweet cherries. Succeeds in East better than most sweets. Tree hardy, foliage heavy, productive, should be followed by Lambert, which ripens later. Both these great sorts are favorites in all sections where sweet cherries are grown.

Lambert *Late Sweet.* One of the largest cherries and one of the best in quality. Dark, purplish red, turning almost jet black when ripe, firm, rich, juicy and of splendid quality. Tree rugged, strong grower and bears enormous crops. Growing these magnificent sweet cherries is a great industry.

Montmorency King (*Ordinaire*) *Mid-Season.* Cannot be too

highly recommended for quality and quantity of fruit, *hardiness* and beauty of tree, and unfailing crops. Ripens a week or ten days after Early Richmond. Montmorency is the most widely planted of all sour cherries, but there is not one-half enough grown to supply the demand for the fruit. The trees do not require much care, and they produce immense crops. Montmorency Stark and Montmorency King are ideal for the market orchard, the home orchard and the small yard.

Dyehouse *Earliest of All.* A better cherry than Early Richmond, a week earlier, larger, smaller seed—best very early variety. Grown largely all over the United States. Trees thrifty, unusually strong grower, good bearer. Dyehouse, Montmorency Stark and Suda Hardy is a combination that gives fruit during the entire cherry season all over the U. S.

Early Richmond—*Early.* Ripens week later than Dyehouse and is not as good as Dyehouse. Medium size, clear, bright red; one of the best known standard sorts. Not so desirable as the Montmorency group.

Montmorency Sweet *Mid season.* A true Montmorency. Sweeter than any other strain. Originated on our grounds where we watched it years before introducing. Introduced by Stark Bro's.

Napoleon—(*Royal Ann*) *Late.* A large yellow, pink blushed sweet cherry. Largely grown. Tree hardy.

Black Tartarian Improved *Sweet, Early.* A select and greatly improved seedling of old Black Tartarian. Large, black, heart-shaped, juicy sweet. Extensively planted. Tree upright, dense grower, vigorous regular bearer. Wherever a black sweet cherry is wanted, plant Black Tartarian Improved. The best, earliest, hardiest and most profitable black sweet sort. Introduced by Stark Bro's. Price 50c above Sour Cherry Prices.

Suda Hardy *Late.* Wherever a late cherry is wanted, Suda Hardy should always be planted. *Perfectly hardy* and the fruit is produced in immense quantities. Of English Morello type, but larger, not quite so acid, better quality, and produces larger crops. Ripens and comes on the market 10 days after Montmorencies are gone and always sells readily at premium prices. Dyehouse, Montmorency, and Suda Hardy give a long season of luscious money-making fruit and are the three best varieties. Introduced by Stark Bro's.

OTHER CHERRY VARIETIES

We also offer the following **sweet** cherries, Black Eagle, Napoleon, Royal Ann, Governor Wood and Windsor and the following **sour** cherries, English Morello, Royal Duke.

A Branch of Suda Hardy



Suda Hardy is easily the best late cherry to plant anywhere.

Grown on an OLD OAK PROCESS Whole Root Tree



Branch of Montmorency Cherry from 4-yr.-old tree in orchard of Hon. C. B. Kountze.



30,000 Stark Gold Trees in our nursery rows. We have a big stock of big trees this year.



Black Tartarian Improved—Best, earliest, hardiest and most profitable black sweet cherry.



Bing—Enormous, Sweet, Popular and Profitable



Dyehouse—Earliest of all Cherries. Very fine.



Lambert—"Sold for 30c per lb. in New York.

Stark Delicious Grape 1/2 Size



MOORE EARLY—One of the best black grapes ripening before Concord.

Stark Record-Bearing Strain Trees

Big Luscious GRAPES

Stark Delicious. Magnificent bright red sort. Sweetest, richest, best quality of all red grapes. Ripens in September. Berry medium to large size. Bunch large, long, shouldered, compact and goes on market in good shape. Most beautiful, best quality large red grape we have ever seen.

Campbell Early. A big black grape ripening ahead of Concord—slightly ahead of Worden. Averages larger than Moore Early, but is hardly as valuable commercially. Should be in every home vineyard.

Worden. Early Glorious black grape; as hardy, healthy vigorous and productive as Concord and larger, better quality and ten days earlier. Worden is recognized as one of the best commercial varieties grown. Both berry and bunch are large, bunches compact and quality excellent. One of the most popular market sorts.

Concord. Best known of all Black grapes. Making money for vineyardists everywhere. Healthy, hardy, vigorous, large bunch and berry. Will produce more year in and year out than any other sort.

Lucile. Early Red. A dark red grape, medium to large berry and bunch, excellent quality, keeps well and ships well. In vigor, health, hardiness, productiveness surpassed by no other variety and practically immune to fungus diseases. Very hardy.

Lutie. A rich red grape good everywhere and under all conditions; a favorite in New York Grape Belt and succeeds in the South. Seldom rots, always dependable. Bears enormous crops.

Niagara. Best known white grape. Famed as "Grand Father" of Stark Delicious. Ranks with old reliable Concord in vigor and productiveness. Widely planted. Bunch large; handsome, juicy, and a fine flavor.

Diamond. (Moore's Diamond.) A magnificent white grape just earlier than Niagara. As dependable in vine and fruiting as Concord. High quality, early hardy, productive. Formerly America's finest Champagne grape.

Hicks. A black grape, larger and a decided improvement on Concord. A better grower and heavier bearer. Highly recommended by New York Exp. Sta. Introduced by Stark Bro's some years ago.

Stark Eclipse. (Trade Mark.) Earliest black grape. Sweetest and best in quality. Ripens week or ten days ahead of Moore Early and Campbell Early. Markets take them readily at highest prices. Hardy, healthy, strong-growing, good foliage, bears well, hangs well, does not crack in wet weather or shatter fruit from the bunch and a splendid shipper. Originated with Mr. E. A. Riehl, orchardist, vineyardist and Director of the Ill. Exp. Sta. at Alton, Ill.; For best results, should be planted with other varieties to secure proper pollenization.

DELAWARE. Medium size bunch and berry, but the standard by which the quality of other grapes is measured. Most widely known red grape and should be planted on all home grounds.



STARK ECLIPSE—The earliest ripening black grape.



LUTIE—A great and popular red grape.

BLACKBERRY

Blowers. Everbearing. Very large jet black fruit, extremely sweet. Hardy, rugged, good bearer, and fruit ships well.

Early Harvest. Very Early. Valuable because of early ripening, excellent flavor, good shipper. Medium size, glossy black, firmer than any other.

Eldorado. Mid-season. Enormous berries, jet black. Plants strong growing, hardy, and rarely fail to bear big crops. Keep well after picking, ship well.

Mersereau. Mid-season. Beautiful, glossy black. Resembles Snyder, but larger, better quality and less likely to turn red after picked. Fruit large, round, good quality and holds up well. We believe Mersereau the best blackberry.



HICKS—A black grape of great size—of the Concord type.

RASPBERRY

Flaming Giant. Red. The World's Record Red Raspberry. Stands 15 degrees below zero without injury. Bears twice as much as Cuthbert and Sunbeam. Immense size, berries—often three-quarters inch across.

Columbian. Mid-season Purple. Best of purple raspberries, fruit large, firm, good quality. Plant hardy, bears big crops.

Cumberland. Early Black. The most widely planted, black cap, extremely hardy, upright vigorous grower, productive, disease resistant. Fruit very large, firm, excellent quality, ships well.

Redpath. Mosaic free Strain of Latham. Mid Season Red. Best. Largest, New Red. Firm, juicy, sprightly, good quality, ships well. Plant vigorous, upright, hardy, bears tremendous crops.

St. Regis Everbearing Early Red. A real everbearing raspberry. Produces big, luscious fruit all summer long. Berries bright crimson, rich, delicious, firm for shipping; plant strong grower, upright, vigorous, hardy.



Flaming Giant Raspberry

GRAPE PRICES

LARGEST TWO-YEAR	If over 1000 Vines wanted write for Special Prices GRAPE			LARGEST ONE-YEAR
	Each	100	1000	
30	\$25	\$220	Agawam (d. red).....	.25 \$20 \$175
1.50	140		Banner (T-M) (red).....	1.40 130
35	30	220	*BRIGHTON (red).....	25 20 175
35	30	260	*CAMPBELL EARLY (blk)	30 25 220
30	25	220	Catawba (red).....	25 20 175
35	30	260	Cynthiana (blk).....	30 25 220
35	30	260	Clinton (blk).....	30 25 220
25	15	100	*CONCORD (blk).....	20 12 75
30	25	220	Delaware (red).....	25 20 175
30	25	220	*DIAMOND (white).....	25 20 175
50	40	300	*ECLIPSE (blk).....	40 35 250
30	25		Green Mountain (wt.).....	25 20
35	28	250	*HICKS (blk).....	30 25 220
35	30	260	*LUCILE (red).....	30 25 220
35	28	250	*LUTIE (red).....	30 22 190
30	20	120	*MOORE EARLY (blk).....	25 15 100
30	25	220	*NIAGARA (white).....	25 20 175
1.50	140		*STARK DELICIOUS (red)	1.40 130
50	40	300	*STARK ECLIPSE (b.).....	40 35 250
1.50	140		Wallis Giant (blk).....	1.40 130
30	25	220	*WORDEN (blk).....	.25 20 175

RASPBERRY

	Each	100	1000
Columbian (purple).....	\$.22	\$12	\$60
Cumberland (black).....	.20	9	50
Cuthbert (red).....	.20	9	50
Flaming Giant (red).....	.50	40	150
Redpath—Strain Latham.....			
St. Regis Everbearing (red).....	.22	12	60

BLACKBERRY

	Each	100	1000
Blowers.....	\$.20	\$9	\$50
Early Harvest.....	.20	9	50
Eldorado.....	.25	14	75
Mersereau.....	.25	14	75



NIAGARA—The best known of the white grapes.

Graceful Shade Trees



American Elm

ASH, WHITE (*Fraxinus Americana*). Symmetrical tree rapid growth and long life. Attractive open foliage allows lawn grass to grow nicely underneath. Tree thrives even under city conditions. Prices: 5 to 6 ft., \$1.00 each; 6 to 8 ft., \$1.50 each; 8 to 10 ft., \$2.00 each.

ASH, EUROPEAN MOUNTAIN (*Sorbus aucuparia*). Medium-sized tree of unusual beauty, with fern-like leaves. Clusters of white flowers in spring are followed by large bunches of showy red berries. In fall foliage turns to beautiful orange and red colors. Prices: 5 to 6 ft., \$1.50 ea.; 6 to 8 ft., \$2.00 ea.

BIRCH, CUTLEAF WEEPING (*Betula alba pendula*). Most graceful tree with long, slender, weeping branches of finely cut foliage. Bark is silvery white which makes an exceptionally beautiful effect. Prices: 4 to 6 ft., \$3.00 ea.; 6 to 8 ft., \$4.00 ea.

BIRCH, EUROPEAN WHITE (*Betula alba*). Moderate-sized tree, with graceful, slender branches of semi-drooping habit. Conspicuous white bark makes it beautiful as a specimen or in groups. Prices: 5 to 6 ft., \$2.00 ea.; 6 to 8 ft., \$2.75 ea.

BOXELDER (*Acer negundo*). Rapid growing, handsome, bright green foliage, nicely shaped spreading head. Will succeed where many varieties will fail to grow. Prices: 5 to 6 ft., 75c ea.; 6 to 8 ft., \$1.10 ea.; 8 to 10 ft., \$1.50 ea.



Lombardy Poplar

This beautiful, upright, fast-growing tree stands like a sentinel among other trees and shrubs.

CATALPA, UMBRELLA (*Catalpa bignonioides nana*). A rapid grower and naturally forms the umbrella-shaped head without pruning. Stark Bro's Umbrella Catalpas are all specially budded to insure perfect heads. Prices: 1-year, \$2.00 ea.; 2-year, \$2.50 ea.; extra, \$3.00 each.

CRAB, BECHTEL (*Malus ioensis plena*). Beautiful medium-sized tree. In early spring literally covered with large, double, rose-like pink flowers of wonderful fragrance. Prices: 2 to 3 ft., \$1.35 ea.; 3 to 4 ft., \$1.50 each.

CRAB, PARKMAN (*Malus halliana parkmani*) Dwarf Japanese tree bearing fragrant rose-pink flowers in spring. Perfectly hardy. Prices: 2 to 3 ft., \$1.35 ea.; 3 to 4 ft., \$1.50 each.

ELM, AMERICAN OR WHITE (*Ulmus americana*). Our grandest shade tree. Long-lived, rapid grower, forming a vase-shaped head, with graceful spreading, and drooping branches. Prices: 5 to 6 ft., \$1.00 ea.; 6 to 8 ft., \$1.50 ea.; 8 to 10 ft., \$2.00 each.

ELM, MOLINE (*Ulmus americana molini*). A valuable new type elm of upright habit of growth, with large leaves. Exceptionally rapid grower. Crotches do not form in this Elm, which prevents splitting. Prices: 6 to 8 ft., \$2.50 ea.; 8 to 10 ft., \$3.00 each.

LINDEN, AMERICAN (*Tilia americana*). (Basswood Tree). Stately native tree, rapid growth and spreading habit, luxuriant heart-shaped foliage. Attractive, clover scented, waxy, creamy-white flowers, exceptionally fine for bees. Prices: 5 to 6 ft., \$2.00 ea.; 6 to 8 ft., \$2.75 ea.; 8 to 10 ft., \$3.75 each.

LOCUST, GLOBE HEADED (*Robinia pseudoacacia bessoniiana*). An unusual formal tree. Head is globe-shaped and foliage gives it a very fine appearance. Successfully growing where temperature often reaches 40 degrees below zero. Prices: \$4.50 each.

MAPLE, SCHWEDLER (*Acer platanoides schwedleri*). Identical in habit of growth with Norway Maple, but foliage is bright wine-red in spring. An unusually beautiful specimen tree. Prices: 5 to 6 ft., \$3.00 ea.; 6 to 8 ft., \$4.00 each.



Norway Maple



The fast-growing Silver Maple



MAPLE, SUGAR or HARD (*Acer saccharum*). Beautiful, slow-growing, long-lived tree. Gorgeous orange, red and gold foliage in fall. Prices: 5 to 6 ft., \$1.50 each; 6 to 8 ft., \$2.25 ea.; 8 to 10 ft., \$3.00 each.

MAPLE, WIER (*Acer dasycarpum wieri*). Rapid-growing variety of Silver Maple, with finely cut foliage and long, graceful, weeping branches. Prices: 5 to 6 ft., \$1.25 ea.; 6 to 8 ft., \$1.75 ea.; 8 to 10 ft., \$2.50 each.

MULBERRY, WEEPING (*Morus alba pendula*). A grafted, weeping tree about 6 to 8 feet high that bears edible fruit. Branches weep to the ground and completely hide trunk of tree. Prices: \$3.50 each.

OAK, PIN (*Quercus palustris*). The best Oak. Fairly rapid-growing pyramidal tree, deeply cut, bright, green leaves. The long branches sweep gracefully down until they touch the ground. Prices: 4 to 6 ft., \$2.25 each; 6 to 8 ft., \$3.25 each.

TULIP TREE (*Liriodendron tulipifera*) Tall, rapid-growing tree of unusual beauty. Odd-shaped leaves and large, tulip-shaped yellow flowers with orange-colored centers. Prices: 5 to 6 ft., \$1.50 ea.; 6 to 8 ft., \$2.00 ea.; 8 to 10 ft., \$3.00 each.



Wisconsin Weeping Willow

This graceful, weeping, feathery-foliaged ornamental tree should be more largely planted. When it attains size, no tree adds more to the appearance of the home grounds.

PLANE TREE, EUROPEAN or SYCAMORE (*Platanus orientalis*). Rapid grower, bark mottled with large blotches of creamy white. Unusually attractive in winter. Withstands smoke, gas, and other similar conditions. Prices: 5 to 6 ft., \$1.75 ea.; 6 to 8 ft., \$2.25 ea.; 8 to 10 ft., \$3.25 each.

POPLAR, CAROLINA (*Populus eugeni*). Most rapid-growing shade tree. Often planted with slow-growing varieties to furnish quick shade. Bright, green, glossy foliage. Prices: 5 to 6 ft., 60c ea.; 6 to 8 ft., 85c ea.; 8 to 10 ft., \$1.10 each.

POPLAR, LOMBARDY (*Populus nigra italica*). Tall, picturesque tree of slender, upright growth. Valuable in formal gardens or to give accent to plantings. Hardy, rapid grower. Prices: 5 to 6 ft., 80c ea.; 6 to 8 ft., \$1.00 ea.; 8 to 10 ft., \$1.50 ea.; 10 to 12 ft., \$2.00 each.

WILLOW, WISCONSIN WEEPING (*Salix blanda*). Hardy and an unusually rapid grower, with long, slender, drooping branches and narrow green leaves. Will thrive in either moist or dry ground. Prices: 4 to 6 ft., \$1.00 ea.; 6 to 8 ft., \$1.50 each.



American White Ash

Our Selection of the Best Flowering Shrubs

BARBERRY, JAPANESE (*Berberis thunbergii*). An all-purpose Barberry, useful as hedge, plant and shrub. Thickly covered with small, bright green foliage and protective thorns. Ideal for hedge. Foliage turns brilliant orange and red in fall and bright red berries are showy during winter. Fine foundation shrub. 1 to 1½ ft., 35c each, 10 for 30c each; 1½ to 2 ft., 45c each, 10 for 40c each.

Dierville Florida
(Weigela Rosea)



Pink Weigela
Weigela Rosea

DEUTZIA LEMOINE (*Deutzia lemoinei*). One of the best Deutzias. Medium height, and in spring is completely covered with large clusters of white flowers. For shrub border or in foundation planting. 1½ to 2 ft., 75c each, 10 at 70c each; 2 to 3 ft., 90c each, 10 at 85c each.

DEUTZIA, PRIDE OF ROCHESTER (*Deutzia scabra*). Tall growing. Double flowers borne in long panicles, and outer petals tinged pink. 2 to 3 ft., 55c each, 10 at 50c each; 3 to 4 ft., 65c each, 10 at 60c each.

DEUTZIA, SLENDER (*Deutzia gracilis*). Dwarf Deutzia, blooms in May. Small, snow-white flowers entirely cover bush. Unexcelled for low foundation or entrance plantings, or in front of taller shrubs. 1 to 1½ ft., 65c each, 10 at 60c each; 1½ to 2 ft., 85c each, 10 at 80c each.

HYDRANGEA PEEGEE (*Hydrangea paniculata grandiflora*). Showy medium to tall shrub. Enormous bloom-heads during July and August, at first white and then changing to pink. Perfectly hardy. 18 to 24 in., 60c each, 10 at 55c each; 2 to 3 ft., 75c each, 10 at 70c each; 3 to 4 ft., 85c each, 10 at 80c each.

HYDRANGEA, SNOWHILL (*Hydrangea arborescens grandiflora*). "Ever-blooming Hydrangea," blooms from June to Frost. Flower-heads often 10 inches across, pure white resembling Snowball. Medium height and especially useful around foundations or in border. 18 to 24 in., 70c each, 10 at 65c each; 2 to 3 ft., 80c each, 10 at 75c each.

LILAC, COMMON PURPLE (*Syringa vulgaris*). The old favorite purple Lilac. Very hardy. 2 to 3 ft., 60c each, 10 at 55c each; 3 to 4 ft., 85c each, 10 at 80c each.

LILACS, FRENCH BUDDÉD (*Syringa vulgaris*). Great improvement over common Lilac. They bloom when very young and colors range from almost a true blue through all shades. Propagated from parent plants brought from France by C. M. Stark, late president of Stark Bro's Nurseries.

Belle de Nancy. Satiny rose flowers borne in large clusters.

Frau Bertha Dammann. Choice single white variety.

Ludwig Spaeth. Flowers deep, reddish purple, long clusters.

Marie LeGrave. Fragrant, white flowers.

Mme. Abel Chatenay. Double white variety.

President Grevy. Finest blue Lilac. Enormous heads of blue flowers are borne profusely.

Prices on all above Lilacs: 2 to 3 ft., \$1.50 each, 10 at \$1.40 each; 3 to 4 ft., \$2.00 each, 10 at \$1.90 each.

ROSE, RUGOSA (*Rosa rugosa*). Extremely hardy. Almost everblooming with bright, red flowers, often 3 inches across followed by red seed-pods on plant all winter. Dark green crinkly leathery foliage. 1½ to 2 ft., 60c each, 10 at 55c each; 2 to 3 ft., 80c each, 10 at 75c each.

SNOWBALL, COMMON (*Viburnum opulus sterile*). "Guelder Rose." Tall, literally covered with enormous white flowers. Ideal as a single specimen or beautiful when massed in shrub border. See photo at left. 2 to 3 ft., 75c each, 10 at 70c each; 3 to 4 ft., 90c each, 10 at 85c each.

SPIREA, ANTHONY WATERER (*Spiraea bumalda*) (*Anthony Waterer*). Beautiful, desirable, dwarf shrub. Bright crimson flowers borne in clusters, often 3 inches across, from June until frost. 1 to 1½ ft., 60c each, 10 at 55c each; 1½ to 2 ft., 75c each, 10 at 70c each.

CRANBERRY BUSH, AMERICAN (*Viburnum americanum*). Beautiful shrub, far superior to European Cranberry Bush. Large, flat heads of white flowers are followed by big clusters of bright red berries. Bright red and yellow foliage in fall. 1½ to 2 ft., 60c each, 10 for 55c each; 2 to 3 ft., 75c each, 10 at 70c each.

HONEYSUCKLE, RED TATARIAN (*Lonicera tatarica sibirica*). Practically first shrubs to leaf out in spring. Unexcelled for tall borders or screen plantings. Often used for tall hedges as they withstand shearing. Most popular Honeysuckle, bears masses of deep pink flowers followed by showy red berries. 2 to 3 ft., 60c each, 10 at 55c each; 3 to 4 ft., 80c each, 10 at 75c each.

HONEYSUCKLE, MORROW (*Lonicera morrowii*). Medium height. Flowers, white when first open, later turn yellow, and fragrant. 2 to 3 ft., 60c each, 10 at 55c each; 3 to 4 ft., 80c each, 10 at 75c each.

JETBEAD (*Rhodotypos herrioides*). Medium height, attractive foliage, white flowers resembling Mock Orange, borne profusely in May and June and fall. Dark jet-black berries. 2 to 3 ft., 60c each, 10 at 55c each; 3 to 4 ft., 75c each, 10 at 70c each.

LILAC, PERSIAN (*Syringa persica*). Medium height, small leaves and graceful, slender stems. Delicately fragrant, lavender flowers are borne in great clusters. 2 to 3 ft., 85c each, 10 at 80c each; 3 to 4 ft., 95c each, 10 at 90c each.

MOCK ORANGE, SWEET (*Philadelphus coronarius*). A deservedly popular shrub. Large creamy white blooms, of orange blossom fragrance, borne profusely in May and June 2 to 3 ft., 55c each, 10 at 50c each; 3 to 4 ft., 65c each, 10 at 60c each.

MOCK ORANGE, LEMOINE (*Philadelphus lemoinei*). Dwarf. Having flowers like Sweet Mock Orange but smaller, same delicate fragrance. Perfectly hardy. 1½ to 2 ft., 70c each, 10 at 65c each; 2 to 3 ft., 80c each, 10 at 75c each.

PRIVET, REGEL (*Ligustrum sboia regelianum*). All purpose shrub, medium height. Also for hedges. Attractive dark green leaves borne on drooping branches. Creamy, white flowers in June followed by dark blue berries. 1½ to 2 ft., 50c each, 10 at 45c each; 2 to 3 ft., 60c each, 10 at 55c each.

SPIREA, BILLIARD (*Spiraea billiardii*). Medium height, with long plumes of pink flowers from July until frost. 2 to 3 ft., 55c each, 10 at 50c each; 3 to 4 ft., 65c each, 10 at 60c each.

SPIREA, THUNBERG (*Spiraea thunbergii*). Attractive, feathery foliage makes this most beautiful. A mass of snow-white flowers before leaves appear. Semi-dwarf. 1½ to 2 ft., 60c each, 10 at 55c each; 2 to 3 ft., 75c each, 10 at 70c each.

SPIREA, VAN HOUTTEI (*Spiraea vanhouttei*). "Bridal Wreath." Graceful branches completely covered in May with showy white flowers. Perfectly hardy. Prices: 2 to 3 ft., 50c each, 10 at 45c each; 3 to 4 ft., 60c each, 10 at 55c each; 4 to 5 ft., 75c each, 10 at 70c each.

SHRUB-ALTHEA (*Hibiscus syriacus*). Often called "Rose of Sharon" or "Hibiscus." Flowers profusely from August until frost. Following varieties best:

Double Purple. Large, double, purplish blue flowers.

Double Red. Flowers dark red. Showy variety. Profuse bloom cr.

Double Rose. Enormous, double flowers, bright rose.

Double White. Pure white flowers borne freely.

Prices of all these: 2 to 3 ft., 65c each, 10 at 60c each; 3 to 4 ft., 85c each, 10 at 80c each.



Snow Ball

The Common Snowball is a glorious sight about Decoration Day

WEIGELA, PINK (*Weigela rosea*). Medium height. Bears profusion rosy pink flowers for several weeks in May and June, and sparingly through summer and fall. 2 to 3 ft., 60c each, 10 at 55c each; 3 to 4 ft., 75c each, 10 at 70c each.

WEIGELA, RED (*Weigela hybrida, Eva Rathke*). Semi-dwarf, completely covered with dark red flowers during spring. Best red Weigela. 2 to 3 ft., 90c each, 10 at 85c each; 3 to 4 ft., \$1.15 each, 10 at \$1.00 each.



Spiraea Van Houttei
The best and most popular shrub



Sweet Mock Orange

SAVE HALF BY BUYING 250 TREES NOW

If you are ever going to plant a 5, 10, 15 or 20 or larger acre orchard **THIS IS THE YEAR TO DO IT!** Here is your chance:

Here are **LOW PRICES** on Demonstration orchards of **250 trees** to encourage the planting of large orchards of these varieties in each community. Customers to agree to care for these trees and give them a fair chance to show the superiority of Stark trees.

Write "Demonstration Order" on Order Blank—and do not fail to **Sign The Agreement** at the bottom of Order Blank for either or both Golden Delicious or Starking.

Not Less Than 250 Trees of a variety at these Special Low Prices—**But you may order more than 250 trees**—if ordered at the same time. **For over 300, write our Wholesale Department.**

Stark's Golden Delicious Apple

Demonstration Orchards—of not less than 250 Golden Delicious Trees.

- 4 to 7 ft. Trees.....65c each
- 3 to 5 ft. Trees.....55c each
- 2 to 3 ft. Trees.....50c each

STARKING Apple

Demonstration Orchards—of not less than 250 STARKING Trees.

- 4 to 7 ft. Trees.....65c each
- 3 to 5 ft. Trees.....55c each
- 2 to 3 ft. Trees.....50c each

Stark Red Delicious Apple

Demonstration Orchards—of not less than 250 Stark Red Delicious Trees.

- 4 to 7 ft. Trees.....48c each
- 3 to 5 ft. Trees.....36c each
- 2 to 3 ft. Trees.....28c each

J. H. Hale—Stark Early Elberta

Demonstration Orchards—of not less than 250 Stark Early Elberta or J. H. Hale Trees. (Peach Trees are going to be mighty scarce, this Fall and this Spring—**DO YOUR OWN THINKING.**)

- 4 to 7 ft. Trees.....38c each
- 3 to 5 ft. Trees.....28c each
- 2 to 3 ft. Trees.....22c each

Little Money Buys Fruit Tree BARGAINS

Order collections by number. No changes in varieties permitted. All "RECORD-BEARING" Strain Stark Trees, 1st Class and Highest Quality. Advertising Offers to Prove the Superiority of Stark Trees.

Collection No. 5

Superb "Back Yard" Orchard 12 Favorite Fruit Trees—\$15.20 Worth

- 12 biggest size (4 to 7 ft.) trees.
- | | |
|----------------------------|----------------------|
| 1 Stayman Winesap Apple | 1 Gold Plum |
| 1 Red Summer Champion | 1 Omaha Plum |
| 1 Red Bird Cling Peach | 1 America Plum |
| 1 Japan Golden Giant Peach | 1 Mont. Stark Cherry |
| 1 J. H. Hale Peach | 1 Stark Gold Cherry |
| 1 Alton Peach | 1 Stella Apricot |
- All 12 Trees (\$15.25 worth) for \$10.00.
- For ONLY \$10**

Gold Cherry—Demonstration Prices

On Demonstration Orchard orders of not less than 20 Stark Gold Cherry Trees—the NEW hardy sweet cherry. Greatly reduced prices to widely extend the popularity of this great sweet cherry.

- 4 to 7 Ft. Trees \$1.00 Each
- 3 to 5 Ft. Trees80 Each

12 FINE TREES FOR THE PRICE OF 10
Both Golden and Red Apple Selection
12 trees, size 4 to 7 ft., for \$10.00
Ideal Home Orchard Collection—fine Golden and Red Apples from earliest to latest.

Collection No. 1

GOLDEN APPLES—Price \$5.00

- | | |
|--------------------|-----------------------|
| 1 Henry Clay (T-M) | 1 "Double-Life" (T-M) |
| 1 Sweet Bough | Grimes Golden |
| 1 Maiden Blush | 1 Golden Delicious |
| 1 Banana | (Sign Contract) |

One Golden or Red Apple Selection
6 trees, size 4 to 7 ft., for \$5.00

Collection No. 2

RED APPLES—Price \$5.00

- | | |
|--------------------|------------------------|
| 1 Early Red Bird | 1 Jonathan |
| 1 Duchess | 1 Starking (Sign Agr.) |
| 1 Stark King David | 1 Stayman Winesap |

Collection No. 6

\$15 For \$24.30 Worth of Best Varieties of Big 4 to 7 Ft. Trees

When ordering just say—"Collection No. 6 \$15"

Our best varieties, ripening from early to late. An ideal back yard orchard.

- | | |
|-------------------------------|-----------------------------|
| 1 Starking (Trade-Mark) | 1 Stark Gold Cherry |
| 1 Golden Delicious Apple | 1 Montmorency Stark Cherry |
| 1 Early Red Bird Apple | 1 Gold Plum |
| 1 Henry Clay Apple | 1 Omaha Plum |
| 1 Duchess Apple | 1 Early Rose Peach |
| 1 Jonathan Apple | 1 Stark Early Elberta Peach |
| 1 Stark King David Apple | 1 J. H. Hale Peach |
| 1 Stayman Winesap Apple | 1 Alton Peach |
| 1 Black Tartarian Imp. Cherry | 2 Concord Grape (2 yr.) |
| | 2 Lutie Grape (2 yr.) |
| | 2 Campbell Early (2 yr.) |

Collection No. 7

Big Farm Orchard And Vineyard

52 Trees, Vines, \$50.25 Worth for

This is a truly great collection of highest quality trees—lusty, healthy trees with big roots. It is truly a Bargain Collection at this low price and because it sells very fast every year, we advise you to **ORDER EARLY**. We will ship the trees any time you say. **Big 4 to**

\$35

- 7 ft. Size Trees.**
- | | |
|--|-------------------------------|
| 1 Starking (Sign Agr.) | 1 Summer Champion Apple |
| 1 Stark Red Delicious Apple | 1 Stark Gold Cherry |
| 1 Stark's Golden Delicious Apple (Sign Contract) | 1 Black Tartarian Imp. Cherry |
| 1 Early Red Bird Apple | 1 Dyehouse Cherry |
| 1 Henry Clay Apple | 1 Early Richmond Cherry |
| 1 Liveland Raspberry | 1 Montmorency King Cherry |
| 1 Duchess Apple | 1 Lincoln Pear |
| 1 Wilson Red June Apple | 1 Fame Pear |
| 1 Jeffries Red Apple | 1 Stark Early Elberta Peach |
| 1 Maiden Blush Apple | 1 J. H. Hale Peach |
| 1 McIntosh Apple | 1 Early Rose Peach |
| 1 Jonathan Apple | 1 Elberta Peach |
| 1 Stark King David Apple | 1 Late Elberta Peach |
| 1 Dark Red Rome Beauty Apple | 1 Red Bird Cling Peach |
| 1 Cortland Apple | 10 Concord Grape (2-yr.) |
| 1 Stayman Winesap Apple | 10 Lutie Grape (2-yr.) |
| 1 Paragon Winesap Apple | 1 America Plum |
| | 1 Gold Plum |
| | 1 Big Mackay Damson Plum |

Collection No. 3

\$8 For \$10.30 Worth of Fine 4 to 7 Foot Size Apple Trees

When ordering, just write "Collection No. 3, \$8"

- | | |
|-----------------------|-------------------------|
| 1 Stark Red Delicious | 1 Stayman Winesap |
| 1 Henry Clay | 1 Northwestern Greening |
| 1 Stark King David | 1 lng |
| 1 Double-Life Grimes | 1 Red Rome Beauty |
| 1 Jonathan | 1 McIntosh Red |

BIG LEADER Collection No. 4

\$10 For \$15.35 Worth of 4 to 7 Ft. Trees

(These Varieties Are The Cream of Our List)

When ordering, just write "Collection No. 4, \$10"

- | | |
|--|-------------------------|
| 1 Starking Apple (Sign Contract) | 1 J. H. Hale Peach |
| 1 Golden Delicious Apple (Sign Contract) | 1 Stark Early Elberta |
| 1 Stark Red Delicious Apple | 1 Stark Green Gage Plum |
| 1 Lincoln Pear | 1 Stark Gold Plum |
| | 1 Stark Gold Cherry |
| | 1 Mont. Stark Cherry |

\$7 For 12 Best Peach Trees Big 4 to 7 Ft. Size

Both Gold and Silver Medal Peach Collections (12 Trees—see below)—4 to 7 ft. trees—for \$7.

Collection No. 8 — "Silver Medal"

\$4 For 6 Big 4 to 7 Ft. Peach

The 6 Best creamy white-fleshed peaches, ripening from early to late.

- | | |
|--------------|----------------------|
| 1 Early Rose | 1 Stark Summer Heath |
| 1 Eureka | 1 Illinois |
| 1 Alton | 1 Stark Heath Cling |

Collection No. 9 — "Gold Medal"

\$4 For 6 Big 4 to 7 Ft. Peach

The 6 Best golden fleshed peaches, ripening from early to late.

- | | |
|-----------------------|--------------------------|
| 1 June Elberta | 1 J. H. Hale |
| 1 Stark Early Elberta | 1 Elberta (Stark Strain) |
| 1 Elberta Cling | 1 Krummel October |

Stark Bro's "Record-Bearing" Strain Fruit Trees-Shrubs

STARKING
KING OF
ALL RED APPLES

New "Double-Red" Delicious
We Paid \$6000.00 for One Limb



**\$6,000.00 Starking Limb That Will
Carry This Boy Through College**

Photo above shows part of Original STARKING tree, with son of Mr. Mood sitting on famous \$6,000.00 Bud Sport Limb. The \$6,000.00 which his father received will be used as a fund to carry this young man through college later on.

STARK BRO'S Nurseries & Orchards Co., at LOUISIANA, Mo. 114 Years

SAVE HALF BY BUYING 250 TREES NOW

If you are ever going to plant a 5, 10, 15 or 20 or larger acre orchard **THIS IS THE YEAR TO DO IT!** Here is your chance:
Here are **LOW PRICES** on Demonstration orchards of **250 trees** to encourage the planting of large orchards of these varieties in each community. Customers to agree to care for these trees and give them a fair chance to show the superiority of Stark trees.

Write "Demonstration Order" on Order Blank—and do not fail to **Sign The Agreement** at the bottom of Order Blank for either or both Golden Delicious or Starking.
Not Less Than 250 Trees of a variety at these Special Low Prices—**But you may order more than 250 trees**—if ordered at the same time. For over 500 Trees write our Wholesale Department.

STARKING Apple

Demonstration Orchards—of not less than 250 STARKING Trees.

4 to 7 ft. Trees.....	65c each
3 to 5 ft. Trees.....	55c each
2 to 3 ft. Trees.....	50c each

Stark Red Delicious Apple

Demonstration Orchards—of not less than 250 Stark Red Delicious Trees.

4 to 7 ft. Trees.....	48c each
3 to 5 ft. Trees.....	36c each
2 to 3 ft. Trees.....	28c each

Stark's Golden Delicious Apple

Demonstration Orchards—of not less than 250 Golden Delicious Trees.

4 to 7 ft. Trees.....	65c each
3 to 5 ft. Trees.....	55c each
2 to 3 ft. Trees.....	50c each

J. H. Hale—Stark Early Elberta

Demonstration Orchards—of not less than 250 Stark Early Elberta or J. H. Hale Trees. (Peach Trees are going to be mighty scarce, Spring 1929 and, especially Fall 1929—DO YOUR OWN THINKING.)

4 to 7 ft. Trees.....	37c each
3 to 5 ft. Trees.....	27c each
2 to 3 ft. Trees.....	21c each

Little Money Buys Fruit Tree BARGAINS

Order collections by number. No changes in varieties permitted. All "RECORD-BEARING" Strain Stark Trees, 1st Class and Highest Quality. Advertising Offers to Prove the Superiority of Stark Trees.

Collection No. 5

Superb "Back Yard" Orchard

12 Favorite Fruit Trees—\$15.20 Worth

12 biggest size (4 to 7 ft.) trees.

1 Stayman Winesap Apple	1 Gold Plum
1 Red Summer Champion	1 Omaha Plum
1 Red Bird Cling Peach	1 America Plum
1 Japan Golden Giant	1 Mont. Stark Cherry
1 Peach	1 Stark Gold Cherry
1 J. H. Hale Peach	1 Stella Apricot (3-4 ft.)
1 Alton Peach	

All 12 Trees (\$15.20 worth) for \$10.00

For ONLY \$10

Gold Cherry—Demonstration Prices

On Demonstration Orchard orders of not less than 20 Stark Gold Cherry Trees—the NEW hardy sweet cherry. Greatly reduced prices to widely extend the popularity of this great sweet cherry. **Not Less than 20 Trees at this price.**

4 to 7 ft. Trees.....	\$1.00 Each
3 to 5 ft. Trees.....	.80 Each

12 FINE TREES FOR THE PRICE OF 10

Both Golden and Red Apple Selection
12 trees, size 4 to 7 ft., for \$10.00
Ideal Home Orchard Collection—fine Golden and Red Apples from earliest to latest.

Collection No. 1

GOLDEN APPLES—Price \$5.00

1 Henry Clay (T-M)	1 "Double-Life" (T-M)
1 Sweet Bough	1 Grimes Golden
1 Maiden Blush	1 Golden Delicious
1 Banana	1 (Sign Contract)

One Golden or Red Apple Selection

6 trees, size 4 to 7 ft., for \$5.00

Collection No. 2

RED APPLES—Price \$5.00

1 Early Red Bird	1 Jonathan
1 Duchess	1 Stark Red Delicious
1 Stark King David	1 Stayman Winesap

Collection No. 3

\$8 For \$10.30 Worth of Fine 4 to 7 Foot Size Apple Trees

When ordering, just write "Collection No. 3, \$8"

1 Stark Red Delicious	1 Stayman Winesap
1 Henry Clay	1 Northwestern Greening
1 Stark King David	1 Red Rome Beauty
1 Double-Life Grimes	1 McIntosh Red
1 Jonathan	

BIG LEADER Collection No. 4

\$10 For \$15.15 Worth of 4 to 7 Ft. Trees

(These Varieties Are the Cream of Our List)
When ordering, just write "Collection No. 4, \$10"

1 Starking Apple (Sign Contract)	1 J. H. Hale Peach
1 Golden Delicious Apple (Sign Contract)	1 Stark Early Elberta
1 Stark Red Delicious Apple	1 Stark Green Gage Plum
1 Lincoln Pear	1 Stark Gold Plum
	1 Stark Gold Cherry
	1 Mont. Stark Cherry

Collection No. 6

\$15 For \$23.20 Worth of Best Varieties of Big 4 to 7 Ft. Trees

When ordering just say—"Collection No. 6, \$15"

Our best varieties, ripening from early to late. An ideal back yard orchard.

No change can be made in varieties

1 Stark Red Delicious Apple	1 Stark Gold Cherry
1 Golden Delicious Apple (Sign Contract)	1 Mont. King Cherry
1 Ey. Red Bird Apple	1 Gold Plum
1 Henry Clay Apple	1 Omaha Plum
1 Duchess Apple	1 Early Rose Peach
1 Jonathan Apple	1 Stark Ey. Elberta
1 Stark King David	1 J. H. Hale Peach
1 Stayman Winesap	1 Alton Peach
1 Ey. Richmond Cherry	2 Concord Grape (2 yr.)
	2 Lutie Grape (2 yr.)
	2 Worden Grape (2 yr.)

Collection No. 7

Big Farm Orchard And Vineyard

52 Trees, Vines, \$46.80 Worth for **\$35**

This is a truly great collection of highest quality trees—lusty, healthy trees with big roots. It is truly a Bargain Collection at this low price and because it sells very fast every year, we advise you to **ORDER EARLY**. We will ship the trees any time you say. **Big 4 to 7 ft. Size Trees.**

- | | |
|--|-----------------------------|
| 1 Stark Red Delicious Apple | 1 Summer Champion Apple |
| 1 Stark's Golden Delicious Apple (Sign Contract) | 1 Stark Gold Cherry |
| 1 Early Red Bird Apple | 1 Dyehouse Cherry |
| 1 Henry Clay Apple | 1 Early Richmond Cherry |
| 1 Liveland Raspberry | 1 Montmorency King Cherry |
| 1 Duchess Apple | 1 Lincoln Pear |
| 1 Wilson Red June Apple | 1 Anjou Pear |
| 1 Jeffries Red Apple | 1 Stark Early Elberta Peach |
| 1 Maiden Blush Apple | 1 J. H. Hale Peach |
| 1 McIntosh Apple | 1 Early Rose Peach |
| 1 Jonathan Apple | 1 Elberta Peach |
| 1 Stark King David Apple | 1 Late Elberta Peach |
| 1 Red Rome Beauty Apple | 1 Red Bird Cling Peach |
| 1 Cortland Apple | 10 Concord Grape (2-yr.) |
| 1 Stayman Winesap Apple | 10 Lutie Grape (2-yr.) |
| 1 Paragon Winesap Apple | 1 American Plum |
| | 1 Gold Plum |
| | 1 Big Mackey Damson Plum |

\$7 For 12 Best Peach Trees

Big 4 to 7 Ft. Size

Both Gold and Silver Medal Peach Collections (12 Trees—see below)—4 to 7 ft. trees—for \$7.

Collection No. 8—"Silver Medal"

\$4 For 6 Big 4 to 7 Ft. Peach

The 6 Best creamy white-fleshed peaches, ripening from early to late.

1 Red Bird	1 Stark Summer Heath
1 Eureka	1 Illinois
1 Alton	1 Stark Heath Cling

Collection No. 9—"Gold Medal"

\$4 For 6 Big 4 to 7 Ft. Peach

The 6 Best golden fleshed peaches, ripening from early to late.

1 June Elberta	1 J. H. Hale
1 Stark Early Elberta	1 Elberta (Stark Strain)
1 Elberta Cling	1 Krummel October

Money-Saving Prices on Home Beautifying Collections

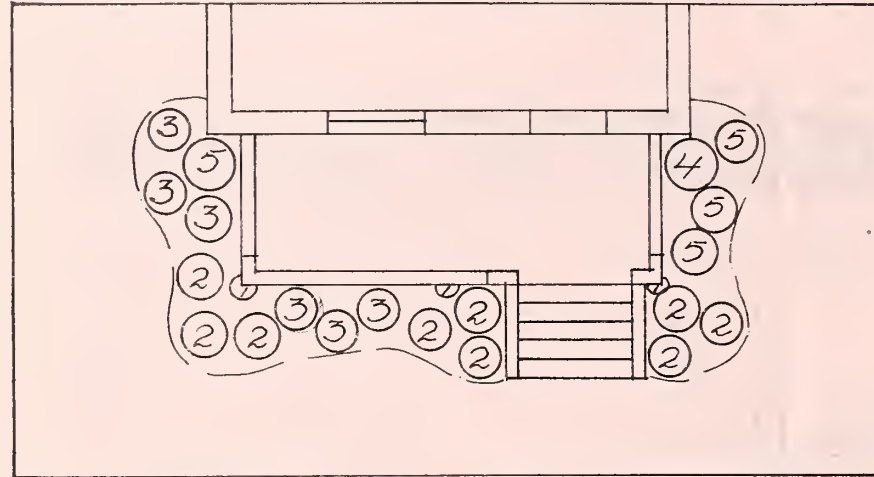
\$5 Rose Collection NO. 19 **\$5**
ONLY \$5 FOR \$7.00 WORTH

- America's Best Hybrid Tea Roses—all everbloomers
- 1 Radiance (Shell Pink) Large 2 Year Size
 - 1 Red Radiance (Brilliant Red) Large 2 Year Size
 - 1 Mrs. Chas. Bell (Salmon Pink) Large 2 Year Size
 - 1 Kaiserin A. Viktoria (Ivory White) Large 2 Year Size
 - 1 Maman Cochet (Delicate Pink) Large 2 Year Size
 - 1 J. L. Mock (Dark Pink—Light Pink) Large 2 Year Size
 - 1 Killarney (Pink) Large 2 Year Size

ALL 7 FOR SPECIAL APRIL-MAY PRICE \$5.00

To Get This Bargain Collection Order **Rose Collection 19**

All first quality field grown stock—vigorous and satisfactory.
 Planting Plan for Collection "A" is Shown Below.



SHRUB COLLECTION "B"

(The "Key" refers to numbers in circles in plan at right—circles show where to plant each variety—a very attractive porch planting.)

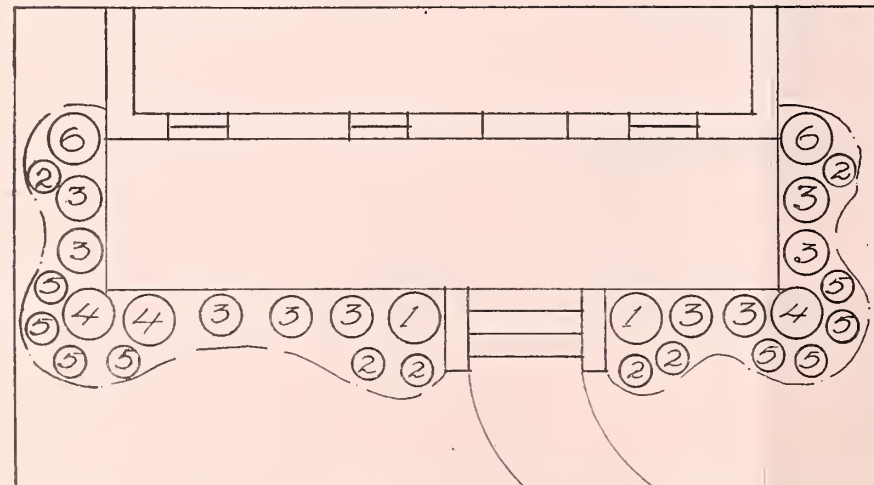
- | (Key) | Shrub Name | Regular Price |
|---------|-------------------------------------|---------------|
| (No. 1) | —3 Shrub Althea—3-4 ft. @ 85c | \$2.55 |
| (No. 2) | —2 Persian Lilac—3-4 ft. @ 95c | 1.90 |
| (No. 3) | —2 Anthony Waterer Spirea @ 75c | 1.50 |
| (No. 4) | —5 Regel Privet—2-3 ft. @ 60c | 3.00 |
| (No. 5) | —7 Eva Rathke Weigela 2-3 ft. @ 85c | 5.95 |

These 19 Shrubs at Regular Prices Would
 Cost You—\$14.90
SPECIAL APRIL-MAY PRICE—\$10.50

You Save—\$ 4.40

To Get This Collection Order **Shrub Collection "B"**
 These Shrubs will be in good planting condition.

Planting Plan for Collection "C" is Shown Below.



(If stock of any of these varieties in collections is exhausted, we reserve the right to fill order with other equally good varieties.)

\$5 Rose Collection NO. 18 **\$5**
ONLY \$5 FOR \$7.95 WORTH

- Hardest, strongest growing Hybrid Perpetual Bush Roses—
 heavy bloomers.
- 2 Frau Karl Druschki (White) Large 2 Year Size
 - 2 Paul Neyron (Pink) Large 2 Year Size
 - 2 Ulrich Brunner (Red) Large 2 Year Size
 - 1 Mrs. John Laing (Pink) Large 2 Year Size
 - 1 J. B. Clark (Red) Large 2 Year Size
 - 1 Gen. Jacqueminot (Red) Large 2 Year Size
 - 1 Clio (Flesh Colored) Large 2 Year Size

ALL 10 FOR SPECIAL APRIL-MAY PRICE \$5.00

To Get This Collection Order **Rose Collection 18**

America's Best Hybrid Perpetual Bush Roses—Vigorous, hardy.

SHRUB COLLECTION "A"

(The "Key" refers to numbers in circles in plan at left—circles show where to plant each variety—a very effective front porch foundation planting.)

- | (Key) | Shrub Name | Regular Price |
|---------|-----------------------------------|---------------|
| (No. 1) | —3 Boston Ivy—2 yr. @ 70c | \$2.10 |
| (No. 2) | —9 Hydrangea Peegee—2-3 ft. @ 70c | 6.30 |
| (No. 3) | —6 Jap. Barberry—1½-2 ft. @ 50c | 3.00 |
| (No. 4) | —1 Shrub-Althea—3-4 ft. @ 85c |85 |
| (No. 5) | —4 Regel Privet—2-3 ft. @ 60c | 2.40 |

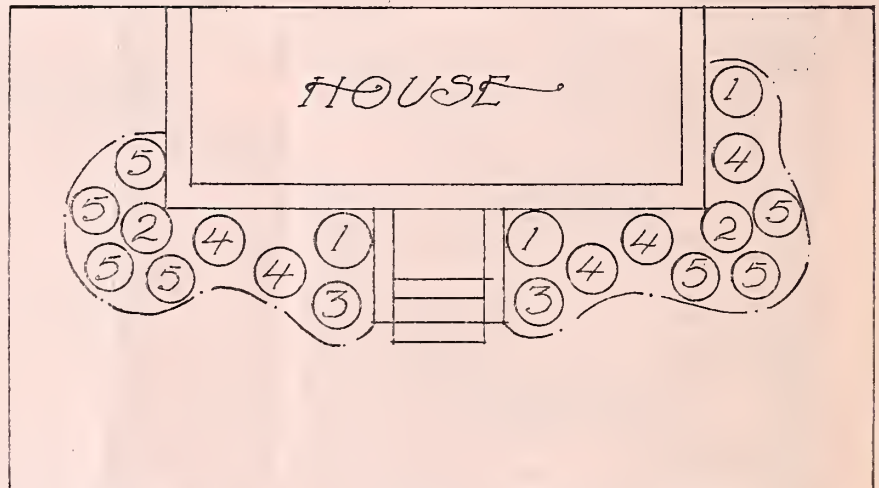
These 23 Shrubs at Regular Prices Would
 Cost you—\$14.65
SPECIAL APRIL-MAY PRICES—\$10.00

You Save—\$ 4.65

To Get This Collection Order **Shrub Collection "A"**

These Shrubs will be in good planting condition.

Planting Plan for Collection "B" is Shown Below.



SHRUB COLLECTION "C"

(The "Key" refers to numbers in circles in plan at left—circles show where to plant each variety—will make handsome foundation planting.)

- | (Key) | Shrub Name | Regular Price |
|---------|---------------------------------------|---------------|
| (No. 1) | —2 Lemoine Mockorange—2-3 ft. @ 80c | \$1.60 |
| (No. 2) | —6 Anthony W. Spirea—1½-2 ft. @ 75c | 4.50 |
| (No. 3) | —9 Vanhoutte Spirea—2-3 ft. @ 45c | 4.05 |
| (No. 4) | —3 Devils Walking Stick—3-4 ft. @ 75c | 2.25 |
| (No. 5) | —8 Snowberry—2-3 ft. @ 45c | 3.60 |
| (No. 6) | —2 Jethead—2-3 ft. @ 60c | 1.20 |

These 30 Shrubs at Regular Prices Would
 Cost You—\$17.20
SPECIAL APRIL-MAY PRICE—\$12.00

You Save—\$ 5.20

To Get This Bargain Collection Order **Shrub Collection "C"**

These Shrubs will be in good planting condition.

Stark Gold
Best
Sweet Cherry

Montmorency
Stark
Best Red Cherry



"Stark Gold hardy as English Morello—stood 22 below zero; big, unblemished, beautiful fruit; bore when 2 years old."—R. L. Sanderson, West Austintown, Ohio. "Stark Gold brought 50 cents a gallon; beautiful, splendid flavor. Wonderfully hardy; bears regularly—bore when 2 years old. None have diseases or insect troubles."—E. Rahrbaugh, Clearville, Pa. "Very hardy; bore second year. Big, Golden color, flavor fine; trees healthy."—Vester Mathis, Karnak, Ill.

Stark Gold

2-Year Old
STARK GOLD
Cherry
Bearing Good Crop

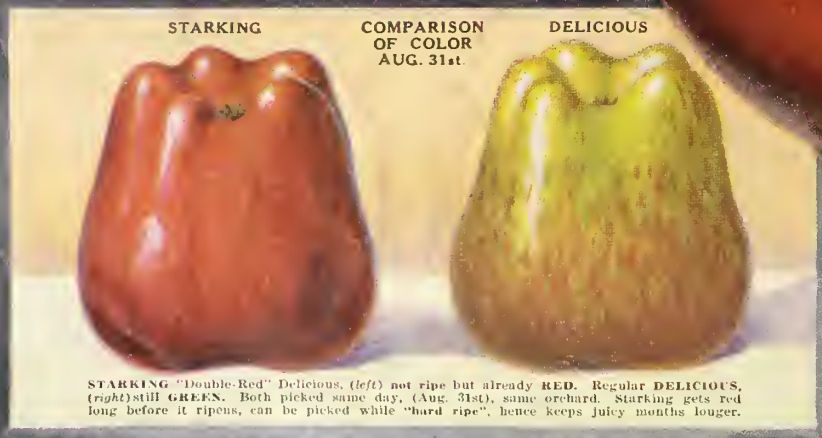
DYEHOUSE

SUDA HARDY

STARK YEAR BOOK

"Reddens
Before it
Ripens"

STARKING
"Double-Red
Delicious"



STARK BRO'S
LOUISIANA, MO.
114 YEARS OLD