

# *Jaunties*

The Oriental Store





## Shop By Mail At Vantine's

THE purpose of this book is to bring the wonderful Vantine store to your home. Supplemented by the information regarding our importations that is always available through our Service-by-Mail Department, it enables you to make selections from the largest stock of Oriental goods in the world with the same assurance of satisfaction as though you personally visited our establishment.

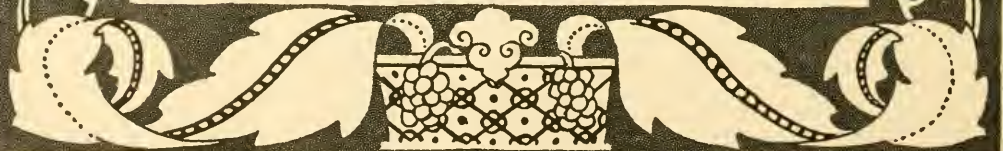
The illustrations are accurate reproductions of the objects presented and except where otherwise noted the articles shown are forwarded prepaid by mail or express at the prices quoted. (In prepaying the transportation we reserve the right to select the method of shipment.)

If when received any article purchased from us is not exactly as represented and is *returned within three days after it is delivered* we shall cheerfully exchange it for other goods or refund the purchase price.

With the exception of Vantine's Oriental perfumes and toilet requisites (which are sold by leading merchants everywhere), the sale of the goods illustrated in our catalogues is confined exclusively to our own stores. We have no agents, offer no discounts nor commissions and prefer cash in advance with all orders.

·A·A·VANTINE·S·CO·Inc·

FIFTH AVENUE & THIRTY-NINTH STREET, NEW YORK





### Chinese Pongee

**T**HANKS to the popularity of the stylish new "putty" color, Chinese pongee is fashion's favorite fabric for this Spring and Summer season.

Anticipating the demand months ago, we increased our importations of this unique Oriental material, and offer for selection the most comprehensive stock of genuine Chinese pongee we have ever carried.

Included is the natural or "putty" colored pongee in a variety of weights to suit all purposes, and printed pongee in all of the season's most popular colors and designs.

For tailored suits, for afternoon frocks, or for room costumes, there is nothing smarter than Chinese pongee, while for sport suits, waists, children's dresses and play suits, it is the ideal fabric.

Prices, prepaid, per yard, according to weight, 85c., \$1, \$1.25, \$1.50, \$2, \$2.50, \$3 and \$3.50.

Samples mailed upon request.



Vantine's Chinese Pongee Automobile Coat for women, made in an exclusive Fifth Avenue design, with adjustable belted back and convertible collar. Trimmed with hand-carved bone buttons in front, on sleeve, and on belt. Finished throughout in finest possible workmanship. Comes in natural pongee of medium and heavy weight. Single breasted as illustrated, or double breasted, in all sizes. In ordering be sure to state bust measure.

No. 1000. Medium weight, Price prepaid, \$18.  
No. 1001. Heavy weight, Price prepaid, \$25.

A Stylish Tailored Suit of natural color Chinese pongee in one of the latest and most popular styles, that illustrates the adaptability of Vantine's Chinese pongee to the modes of the hour. Numerous other ways of using this quaint Oriental fabric, develop new possibilities of dress that will appeal to every woman who loves the beautiful in attire.



## Oriental Silks

**T**HE Oriental Silks imported by us are woven on hand-looms in the Far East under the supervision of our foreign representatives, who frequently visit the silk-weaving districts of China and Japan. This year's importations include all the new weaves, designs and colors, many of which were originated by and are confined exclusively to Vantine's.

**Canton Silk (Plain).** A light weight, high lustre silk of coarse weave, for street or evening wear, all colors including black and white. 27 inches wide, per yard, \$1.25

**Lyons Printed Silks.** Lyons Printed Japanese Rain-proof Silk, also known as Oriental foulard, ideal for traveling, street or evening wear, large variety of designs in light and dark grounds, dots, stripes and figures. 27 inches wide, per yard, \$1.00, 1.25, 1.50

**Japanese Taffeta Silk.** Particularly adaptable to the new bouffant styles, in white, black, light blue, lavender and pink. 36 inches wide, per yard, \$2.50

**Japanese Crepe Taffeta.** A distinctive and unique weave, exclusively Vantine's, in lavender, pink and citron colors. 43 inches wide, per yard, \$3.50

**Japanese and Chinese Brocaded Crepes.** Suggesting in the richness of their weaves Oriental opulence. Come in white and colors. 27 inches wide, per yard, \$2.50; 40 inches wide, per yard, \$3.50, 4.00.

**Japanese Habutai Silk.** Ideal for linings, blouses, underwear, etc.; may be had in practically any plain color desired. 27 inches wide, per yard, 70c. to \$1.50; 36 inches wide, per yard, \$1.00 to \$2.50.

**Plain White Habutai Silk.** 27 inches wide, per yard, 50c. to \$2.00; 36 inches wide, per yard, 75c. to \$2.50.

**Japanese Tanriyoku Crepe (Crinkled).** A hand-loom Oriental silk that is always popular. Comes in light and dark colors, for street and evening wear. 40 inches wide, per yard, \$2.50

**Chinese Canton Crepe.** A coarse weave silk with soft finish, in white, black and many new shades. 27 inches wide, per yard, \$2.50; 40 inches wide, per yard, \$4.00.

**Chinese Hand-embroidered Canton Crepe.** A beautiful Eastern fabric with hand-embroidered all-over design. Comes in black, white and all the new colors. 27 inches wide, per yard, \$6.50, 7.50

Upon request, specifying weave and colors preferred, we shall mail, postpaid, samples of any of the above



No. 1403. Price \$5

### Vantine's Panama Hats

**I**N offering these stylish summer hats at the moderate prices quoted, we ask you not to compare them with similar hats of inferior quality frequently advertised at these prices. Our hats are of excellent quality Panama, tightly woven under the peculiar atmospheric conditions necessary for the production of the finest hats procurable.

We import our hats direct from the native weavers, in a shape that is ready to wear, and they may be trimmed and shaped by you in almost any style you wish.

For the seashore, in the mountains, on the golf links or tennis court, when motoring, yachting, or for wear at any time, the Vantine Unblocked Panama is the ideal hat for spring and summer wear.

**No. 1403.** Vantine's Unblocked Panama Hat, brim  $4\frac{1}{2}$  inches wide; crown  $4\frac{1}{2}$  inches high; diameter of crown (head size) 8 inches. **Price prepaid, \$5**

### Vantine's Trimmed Panama Hats

These exclusive creations—illustrated on the two pages following—are the Vantine Panama Hats, blocked in the latest and most fashionable shapes, trimmed with a smart band of black silk velvet ribbon with tailcrod bow at side, and beautifully finished with neatly arranged Oriental silk lining.

To the woman who seeks a distinctive and individual spring and summer hat at a moderate price, we recommend any of the models illustrated.

Each hat carefully packed and forwarded by parcel post (safe delivery guaranteed).

**Price prepaid, \$7**



1446

No. 1446. A smart model, with double-dented crown, narrow silk velvet band, rosette in back, from which suspend two streamers. Price prepaid, \$7



1427

No. 1427. A stylish creation, with graduated crown and pencil curl brim, that is sure to be appreciated by the particular dresser. Price prepaid, \$7



1444

No. 1444. A modish hat, in a shape similar to No. 1427 but with rolled brim instead of pencil curl. Price prepaid, \$7



1419

No. 1419. A "mannish" Panama with pencil curl brim, telescope crown slightly creased at front, back and sides. Price prepaid, \$7



1413

No. 1413. A conservatively stylish Panama Hat with pencil curl brim and telescope crown.

Price prepaid, \$7



1327

No. 1327. This attractive model may be worn as illustrated, turned down all around or with brim upturned.

Price prepaid, \$7



1400

No. 1400. A hand-creased Panama with flexible finish, that may be worn in a shape to suit your fancy. Trimmed with Pugeree band.

Price prepaid, \$7



1404

No. 1404. A hat similar in shape to 1413 but has brim that is almost flat, and telescope crown.

Price prepaid, \$7



83

No. 83. Vantine's Special Oriental Silk Auto Veil, made of genuine hand-loom Japanese silk, 27 inches wide, 2 $\frac{3}{4}$  yards long. Comes in Nile, pink, yellow, navy, brown, gray, and black, nicely folded in pretty hand-colored Japanese crepe paper box.

Price prepaid, \$2.50



98

No. 98. Ladies' Hand Bag of hand-embroidered Canton crepe, lined with moire and fitted with powder case and circular mirror. Comes in pale blue, white, pink, navy blue and black.

Price prepaid, \$10.50



117

No. 117. Chinese Canton Silk Hand-embroidered Shawl, floral design, heavy double silk fringe. Color, cream white; size 54 x 54 inches. Price prepaid, \$30

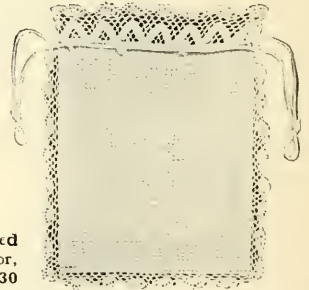
Other sizes, 36 inches at \$4.50 to \$6.50; 45 inches at \$12.50 to \$14.50; 54 inches at \$16 to \$30, and 60 inches at \$35 to \$70.

The sizes given are exclusive of fringe, and represent dimensions of shawls only.



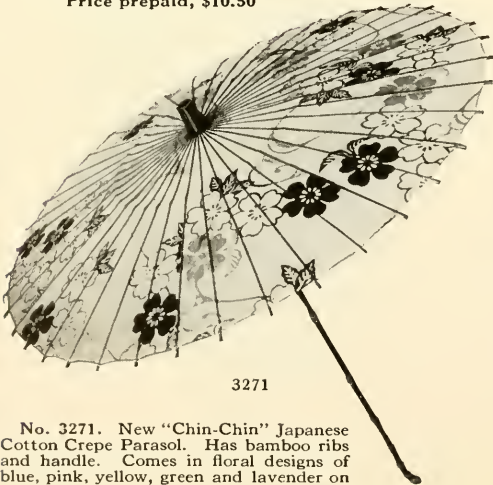
1382

No. 1382. The famous Vantine Japanese Scarf, made in Japan of genuine Oriental silk; size 45 x 45 inches; may be had in light blue, pink, Nile, gray, navy, red, and black, nicely folded in pretty hand-colored Japanese crepe paper box. Price prepaid, \$1.50



1681

No. 1681. White Washable Lace Draw Bag with removable white linen lining; size 8 $\frac{3}{4}$  x 10 $\frac{1}{2}$  inches. Price prepaid, Special, 75c.



3271

No. 3271. New "Chin-Chin" Japanese Cotton Crepe Parasol. Has bamboo ribs and handle. Comes in floral designs of blue, pink, yellow, green and lavender on a white ground. Price prepaid, \$1.50



1913

No. 1913. Fine Printed Cotton Crepe Parasol, carved wood handle, bone tips on ribs, bone ferrule. Pale green, pink, yellow, light blue, navy and light lavender ground; assorted floral designs. Price prepaid, \$3.50





Vantine's Japanese Toweling as applied to dining room decoration. In addition to the green and white color combination shown, the designs illustrated may be had in pink and white, yellow and white or blue and white

## Japanese Toweling



Japanese Toweling or "Tenugui," as it is known in Japan, is an interesting Oriental fabric of hand-twilled cotton with a linen finish, on which are hand-stencilled patterns of rare and artistic designs. In the Orient it is used for drying the face and hands after ablu- tion, so when lifting a towel to his face the native beholds some fair scene that reminds him either of the beauty of his country, the habits of wild life, or the history of the race from which he sprung.

The American housekeeper, however, ever alert for any distinctive and individual fabric that will increase the attractiveness of her home, immediately realized the possibilities of this quaint Oriental creation, and it is really astonishing what a vogue Japanese Toweling now has.

It is a most fascinating fabric to work with, for somehow it suggests uses to which one would never have dreamed of putting it. Aside from its use in the dining room, as shown in the illustration above, it is also used extensively in bedrooms, where its artistic designs lend themselves to the making of bedspreads, upholstery covers, dresser and chiffonier scarfs, couch covers, laundry bags, etc.

Our stock of Japanese Toweling, of which we show 12 designs on the following page, is the largest to be found in America, and includes numerous designs and colorings to be had in no other establishment.

Vantine's Japanese Toweling is 12 inches wide and is sold only in bolts containing ten towels (or yards) with one pattern to each yard. It is impossible, therefore, to supply samples without destroying a complete design, but we shall cheerfully accept for exchange or refund any design selected, which when received does not meet with complete approval.



No. 1649

**CHRYSANTHEMUM**Price per Bolt  
Prepaid, 90c.

No. 1143

**PINE BRANCH**Price per Bolt  
Prepaid, 90c.

No. 1660

**BAMBOO**Price per Bolt  
Prepaid, 90c.

No. 1075

**PLUM BRANCH**Price per Bolt  
Prepaid, \$1

No. 1674

**WILD DUCK**Price per Bolt  
Prepaid, \$1

No. 1036

**CHERRY**Price per Bolt  
Prepaid, \$1

No. 1037

**WISTARIA**Price per Bolt  
Prepaid, \$1.20

No. 1018

**BUTTERFLY**Price per Bolt  
Prepaid, \$1.20

No. 8

**MAPLE LEAF**Price per Bolt  
Prepaid, \$1.20

No. 19

**BAMBOO**Price per Bolt  
Prepaid, \$1.20

No. 2

**WILLOW AND BIRD**Price per Bolt  
Prepaid, \$1.20

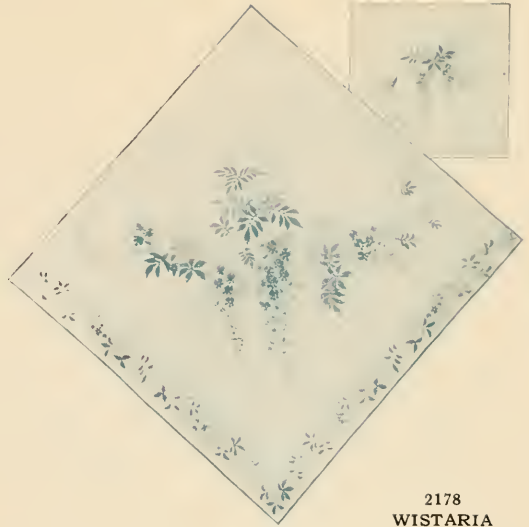
No. 1039

**SPARROW**Price per Bolt  
Prepaid, \$1.20

Any of the above designs may also be had in green and white, pink and white and yellow and white



2250  
IRIS



2178  
WISTARIA

**T**HESSE dainty Table Covers and Doilies are woven and stencilled entirely by hand, and as the colors do not run or fade they are especially suitable for use on the lawn or veranda. They wash perfectly and are particularly effective (in blue and white) when used with Canton china ware, shown on page 26, the Howo china ware shown on page 41, the Gold Medallion china on page 12, or the Sedji china shown on page 42. Price prepaid, per set, consisting of Cover and twelve 12-inch Doilies:

30x30 inches.....	\$1.65	45x45 inches.....	\$2.00
36x36 inches.....	1.75	48x48 inches.....	2.25

Either Covers or Doilies of sets in this color may also be purchased separately as follows:

**COVERS**

**DOILIES**

30x30 inches.....	\$ .75	12x12 inches.....	Per Dozen, \$1.00
36x36 inches.....	.85	Table Runners to match any of the above sets:	
45x45 inches.....	1.50	17x54 inches.....	Each, 65c.
48x48 inches.....	1.75	17x62 inches.....	Each, 75c.

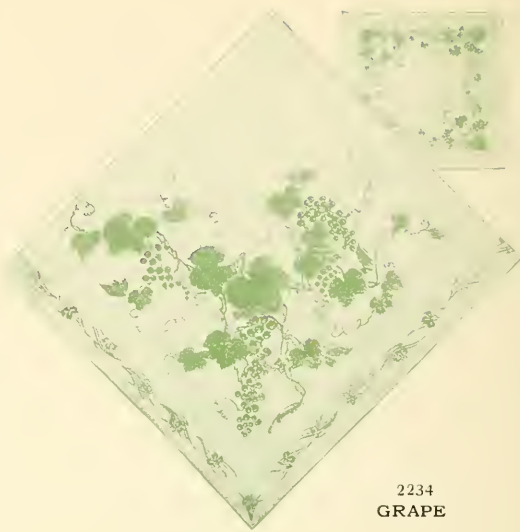
With the exception of 48x48 Covers, which come in blue and white only, any of these sets may be had in green and white



2222  
PLUM



2238  
MAPLE

2250  
IRIS2234  
GRAPE

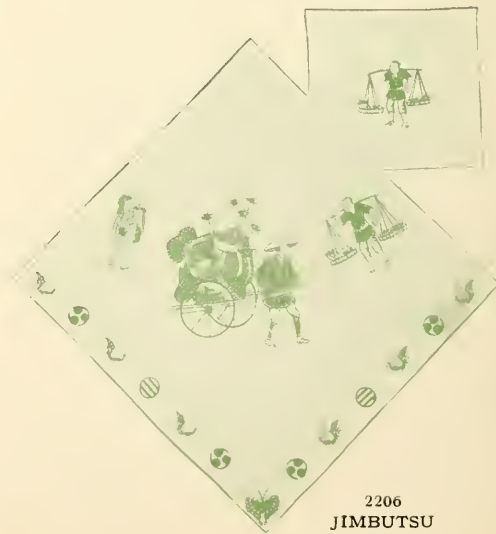
**A** Japanese Toweling Table or Luncheon Set with Doilies to match is a most delightful novelty for the breakfast or luncheon table. These sets are made from washable Japanese Tenugui (or toweling) with various stencilled designs in beautiful shades of green on white ground.

In addition to the designs shown, we can supply these sets in the plum and wistaria designs.

Each set consists of Table Cover and one dozen 12-inch Doilies, the sizes and prices of which are as follows:

30 x 30 inches, with 12 Doilies 12 inches square. **Price prepaid, \$1.65**  
 36 x 36 inches, with 12 Doilies 12 inches square. **Price prepaid, 1.75**  
 45 x 45 inches, with 12 Doilies 12 inches square. **Price prepaid, 2.00**

Table Runners, 17 x 54 inches, 65c. each; 17 x 62, 75c. each

2246  
CHRYSANTHEMUM2206  
JIMBUTSU



7771

No. 7771. Japanese Hammered Brass Hot Water Kettle, Stand and Alcohol Lamp, etched floral and character design; tea kettle silver lined. Price prepaid, \$3



230

No. 230. Chinese Tea Cosy Basket, with gold medallion teapot and two cups; ideal for travelling purposes; size of teapot, 5x4½ inches. Price prepaid, \$3.75



7770

No. 7770. Japanese Plain Hammered Brass Hot Water Kettle, Stand and Alcohol Lamp; tea kettle silver lined. Price prepaid, \$3



2446

No. 2446. Silk Kabe Crepe Hand-painted Wadded Tea Cosy, assorted floral designs on old blue, pink, old rose, black, red or yellow ground. Price prepaid, \$1.50



1100

No. 1100. Vantine's Famous Orange Pekoe Tea. One-quarter pound, 30c.; one-half pound, 50c.; one pound, \$1. (See complete list of teas on page 44.)



2443

No. 2443. Hand-embroidered Japanese Satin Tea Cosy, silk lined and wadded, floral designs on old blue, pink, old rose, black, red or yellow ground. Price prepaid, \$3.50



9112

No. 9112. Banko Teapot, hand-painted raised design of Japanese household gods. Artistic and unusual. Made in Yokkaichi, Japan. Size 5¼ x 6½ x 4¾ inches. Price prepaid, \$1.25

No. 9113. Banko Teapot, hand-painted, grotesque shape representing a Japanese god. Made in Yokkaichi, Japan. Size 5¼ x 7 x 5 inches. Price prepaid, \$1.25



9113



9344

No. 9344. Japanese Ninsei Tea Set, consisting of Teapot, Sugar Bowl, Cream Pitcher and 6 Cups and Saucers; grayish color ground with "snow on green bamboo" design—typically Japanese. Comes also in a plum blossom design. **Price prepaid per set, \$6.75**

**T**EA things are your own intimate possessions—to be shared with your intimate friends, to inspire intimate conversations and confidences. The tea set illustrated is a Vantine tea set, and to you who know the name no other word of commendation is necessary.

Each set is carefully packed in an individual box, Japanese fashion, in our studio in Japan, and is forwarded, safe delivery guaranteed, from our store in the same characteristic wrapping. We do not open the boxes nor in any way disturb the contents, and the recipient is assured of receiving the fascinating tea sets packed in the style that only the Orientals know.

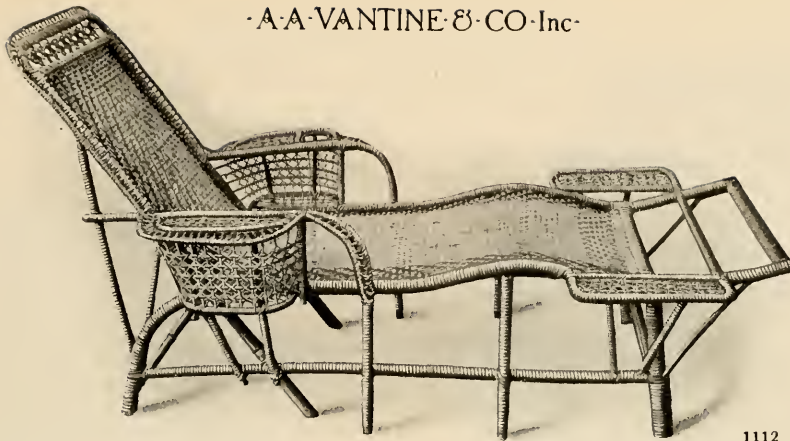
When ordered for wedding gifts, etc., the lid of the box will be lifted sufficiently to insert the card of the donor, so that the person to whom a set is sent, in reality receives a gift direct from the Orient.

Other tea sets ranging in price from \$2.50 to \$10.00 are beautifully illustrated and fully described in our Tea Set Booklet, a copy of which will be forwarded, postpaid, promptly upon request.



GOLD  
MEDALLION CHINA

For the hostess who seeks china ware of distinctiveness and individuality, there is nothing that can compare with Gold Medallion, and being an "open pattern," you may buy an entire set or only a few pieces and add to these from time to time until your set is complete. Color plates showing in actual colors Gold Medallion China mailed postpaid on request. For complete price list see page 46.



1112

No. 1112. Height of back 35 inches, length of seat from back to foot-rest 64 inches, width of seat 19 inches.  
 Price packed for shipment, \$12

### Canton Furniture

**W**HETHER your summer home is a villa or a bungalow—be it in the hills or by the sea—you could not choose furniture more fitting than the cool, comfortable and artistic Canton furniture, several designs of which we illustrate in the following pages. (In winter it is equally adaptable for use in any room in the house, as its sanitary construction will immediately commend it.)

Vantine Canton Furniture is woven by hand in Canton, China, and there is not a visible nail in its entire construction. It is strong, durable and the most comfortable summer furniture made—being woven of specially selected rattan, it readily shapes itself to the contour of the occupant.

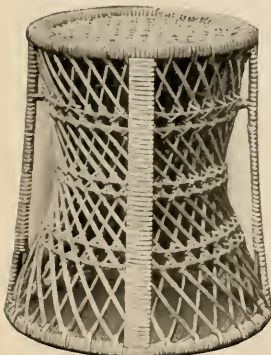
Unlike any other furniture, it is unaffected by the elements. In fact, it is really benefitted when occasionally subjected to a complete drenching. Being the lightest furniture made, it may be easily moved, and in the "hour-glass" designs may be placed on the lawn as satisfactorily as on the porch.

We import but one quality of this furniture—the best—and to avoid inferior substitutions, send your order direct to Vantine's. Vantine's Canton Furniture is sold only in the Vantine stores—we have no agents—and for the protection of our customers each piece bears the metal name-plate illustrated below.

We do not prepay the transportation charges on Canton furniture, but owing to its light weight it can be shipped at very little expense. Full information regarding express and freight charges will be promptly furnished on request.



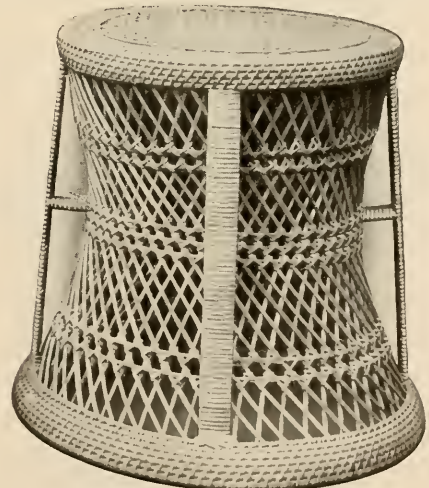
Vantine's Canton Furniture has this name-plate on each piece



2



2A



3

No. 2. Canton Rattan Stand or Stool; 18 inches high, top 12½ inches in diameter, weight 3 pounds. (May be sent by parcel post.) Has four braces reinforcing top and bottom. May also be used as waste basket when inverted.

Price, \$1.75

No. 2A. Canton Rattan Stand or Stool; may also be used as waste basket when inverted. Height 9½ inches, diameter of top 11½ inches, weight 1½ pounds. (May be sent by parcel post.)

Price, 75c.

No. 3. Canton Rattan Table, or (inverted) Laundry Hamper. Height 16½ inches, diameter of top 16½ inches, weight 8 pounds.

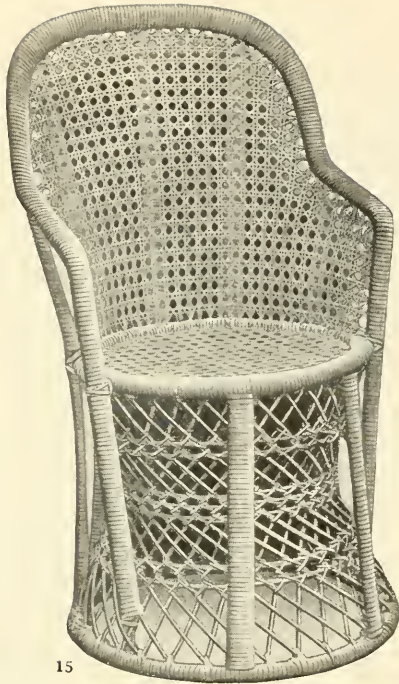
Price, \$5

No. 7. Table as above but 24 inches high, diameter of top 19½ inches, weight 15 pounds.

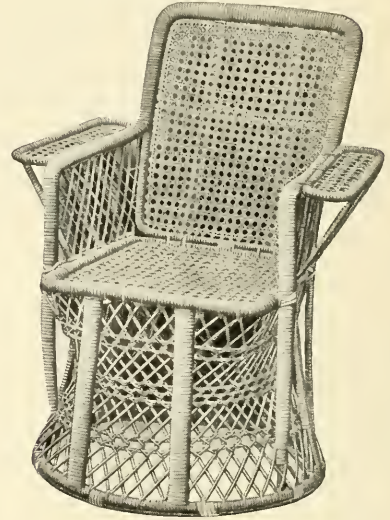
Price, \$6.50



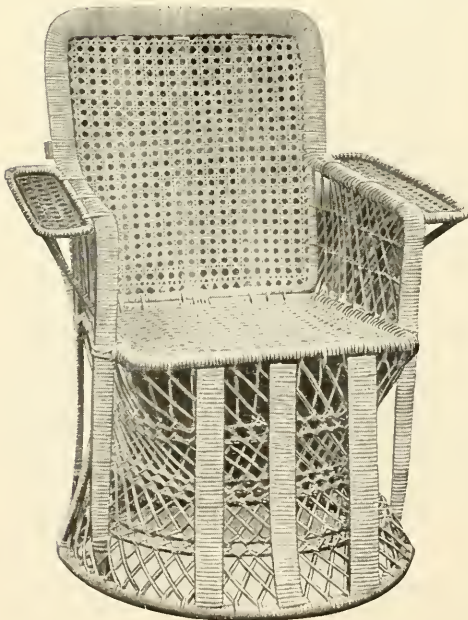
Vantine's Canton Furniture has this name-plate on each piece



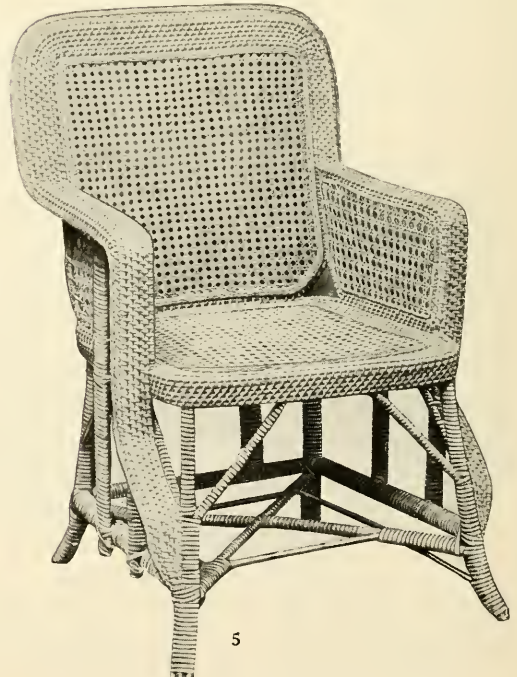
15  
No. 15. 37 inches high, diameter of seat 18 inches.  
Price, \$4.50



18  
No. 18. 36 inches high, seat 17 x 17. Price, \$5



17  
No. 17. 37 inches high, seat 17½ x 17½. Price, \$6  
No. 25. 42 inches high, seat 17½ x 17½. Price, \$10



5  
No. 5. Height 36 inches, seat 19½ x 19½. Price, \$10



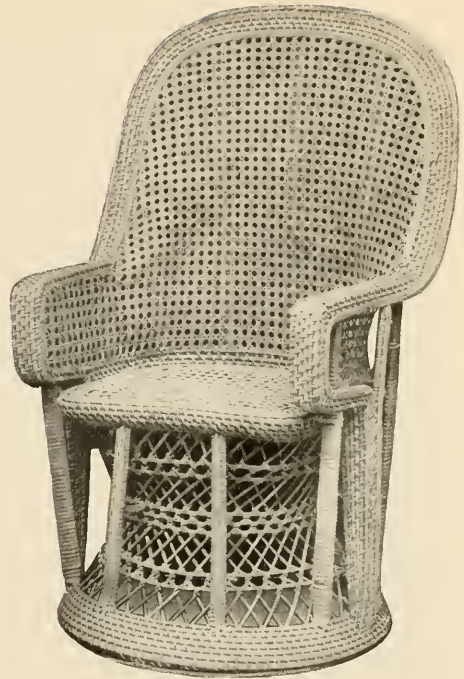


Vantine's Canton Furniture has this name-plate on each piece



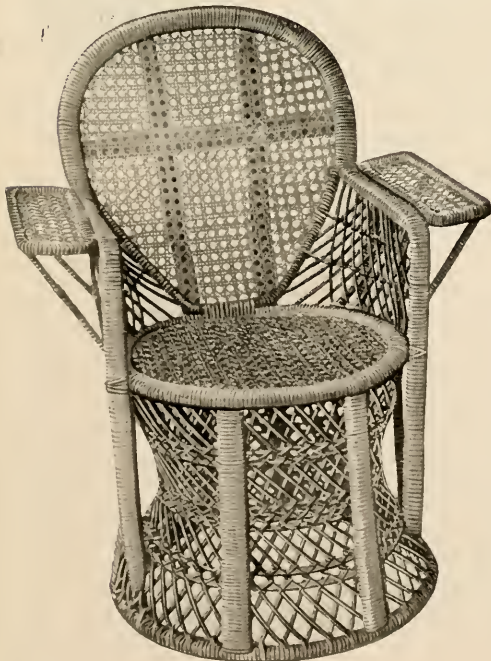
19

No. 19. 30 inches high, seat  $17\frac{1}{2}$  x  $17\frac{1}{2}$  inches.  
Price, \$6



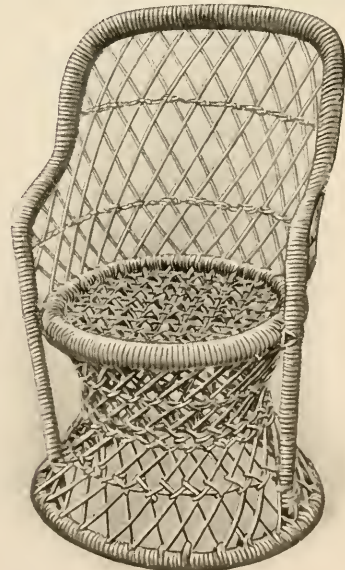
103

No. 103.  $42\frac{1}{2}$  inches high seat 18 x 18 inches.  
Price, \$7.50



1040

No. 1040. 30 inches high, diameter of seat 16 inches.  
Price, \$6



1102A

No. 1102A. Child's Chair, 18 inches high, diameter of seat 9 inches; weight packed, 3 pounds. Price, \$1.25

No. 1102B. Above design 23 inches high, diameter of seat 11 inches; weight packed, 3 pounds. Price, \$1.75  
(Either of these Chairs may be sent by parcel post)



8859

No. 8859. Japanese Fibre Rug, a reproduction of a fine old Chinese Rug. Background is of steel ivory tone with design in two-toned blues with here and there some old gold.

### Japanese Fibre Rugs

**N**OTHING we have ever imported in the line of rugs has met with such universal satisfaction as our Japanese fibre rugs, which, although having the appearance of antique Oriental rugs, are considerably less expensive, and for the summer home much more appropriate.

These rugs are made of a flax-like fibre that is imported into Japan from India, and the designs which are confined exclusively to Vantine's are reproductions of some of our highest price Oriental rugs. They are very durable, and with ordinary care will wear indefinitely.

Sizes and prices of rugs illustrated packed for shipment:

2 feet 6 inches x 3 feet . . . . .	\$4.25	8 x 10 feet . . . . .	\$27.00
3 x 6 feet . . . . .	6.00	9 x 12 feet . . . . .	35.00
6 x 9 feet . . . . .	17.00	12 x 15 feet . . . . .	60.00



8826

No. 8826. Japanese Fibre Rug, known as the dragon design, background of tan or golden brown with dragons of soft toned blue outlined in deep old rose, ivory and green. Other Japanese and Chinese characters woven throughout the center and border, a very popular design. (For prices and sizes, see page 16.)



8045

No. 8045. Japanese Fibre Rug (side view). Dark or medium tan toned back ground with figures of Japanese pagodas, birds, butterflies, dragons, crabs, vases and fans worked out in old blues, rose, ivory, green and brown—very Oriental looking. (For prices and sizes, see page 16.)



10363

No. 10363. Japanese Four-fold Embroidered Satin Fire Screen, black wood frame 30 inches high; panels are 11 $\frac{1}{4}$  inches wide. Back has a hand-painted landscape design. Comes in maroon, black, dark green, dark blue and brown ground, beautifully embroidered in floral designs in self-tones or natural colors.

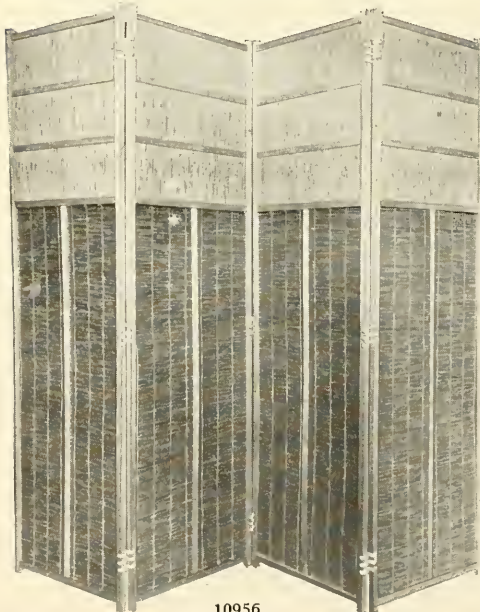
Price packed for shipment, each, \$15



10379

No. 10379. Japanese Single Fold Embroidered Satin Fire Screen. Has black wood frame carved to match the design; 42 inches high and 27 inches wide; hand-painted landscape design on back. Comes in dark blue, maroon, dark green, brown and black ground, beautifully embroidered in floral designs in self-tones or natural colors.

Price packed for shipment each, \$18



10956

No. 10956. Durable and Artistic Summer Screen, made of Japanese Yoshi reed. Has natural wood frame 5 $\frac{1}{2}$  feet high; panels are 19 inches wide.

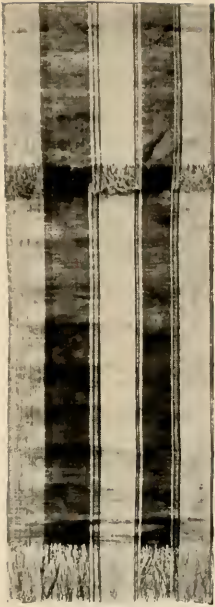
Price packed for shipment, each, \$9.75



8256

No. 8256. Four-fold 5 $\frac{1}{2}$ -foot Japanese Matting Screen, with bamboo design painted in green, back of screen finished in green and white chintz.

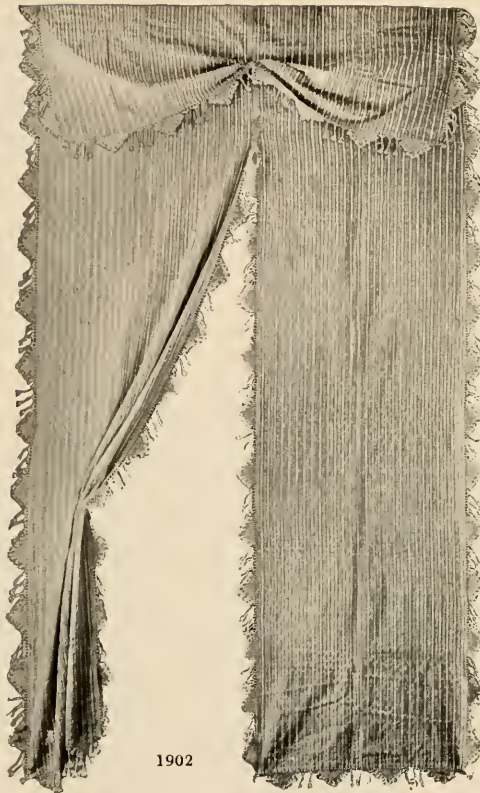
Price packed for shipment, \$5



1900

No. 1900. Madagascar Curtains in stripes or natural (straw) color; one of the most distinctive and unique summer curtains we import. Each curtain is 2 feet wide by 9 feet long with natural fringe on both ends.

Price per pair prepaid, \$2.50.



1902

No. 1902. Anatolia Curtains, made of cotton with delicate stripes running vertically; curtains are connected at the top and have pretty white fringe all around; come ready for hanging. Also used extensively for bedspreads in summer homes and curtains in summer cottages. May be had in stripes of blue, or red on a cream ground, also white on white ground; size 5 feet wide by 10 feet long.

Price per pair prepaid, \$4



1901

No. 1901. India Print Curtains from Punjab, India, printed by hand with wood blocks which were cut and carved in numerous designs copied from models for years buried in ancient temples and tombs. A coating of vegetable dye which is warranted to withstand light, and, therefore, very durable, is applied to the surface of the blocks and then transferred to the fabric, resulting in a color combination that is particularly pleasing. India Prints are especially appropriate for summer home curtains, as they are not only unique and artistic, but inexpensive. Come in assorted designs and colorings; size 4 x 9 feet. (In ordering state colors preferred.)

Price per pair, \$4.50

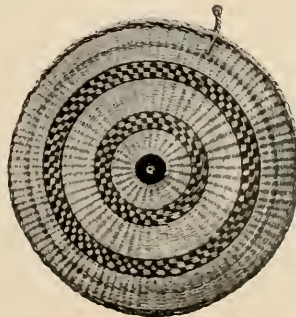
No. 1904. India Print Couch Covers, size 6 x 9 feet. Price each, \$3



1903

No. 1903. Madagascar Grass Cloth Cushions, size 22 x 22 inches, especially desirable for summer use, as they are unaffected by moisture; each pillow silk floss filled.

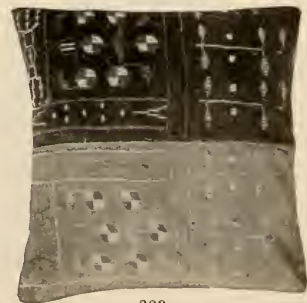
Price prepaid each, \$1.25



8627

No. 8627. Hand-woven Grass Porch Mat, made in Kobe, Japan; 18 inches in diameter, about 1½ inches thick. Comes woven in alternate circles of Oriental coloring.

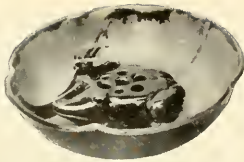
Price prepaid each, 50c.



200

No. 200. Bagdad Pillow, made of cotton Bagdad stripes, Oriental colorings, red, green, gold, dark blue and ecru; two colors to a pillow; filled with cat-tail floss. Size 20 x 20 inches.

Price prepaid, \$3



9683

No. 9683. Shozan Flower Bowl with frog flower holder for cut flowers. The ideal and correct way for displaying cut flowers. These bowls are without doubt the most artistic ever sent from Japan. Come in brownish or grayish grounds with floral designs in harmonizing colors.

Price prepaid per set, \$1.85



34398

No. 34398. Japanese Hand-carved Wood Salad Fork and Spoon, assorted Japanese floral designs, well carved; size 10½ inches.

Price prepaid per set, \$1



15213

No. 15213. Japanese Sumida Fern or Cut Flower Dish, surrounded by 10 porcelain figures of men and women, prettily and heavily glazed, mixed harmonizing colors. Size 9 inches in diameter.

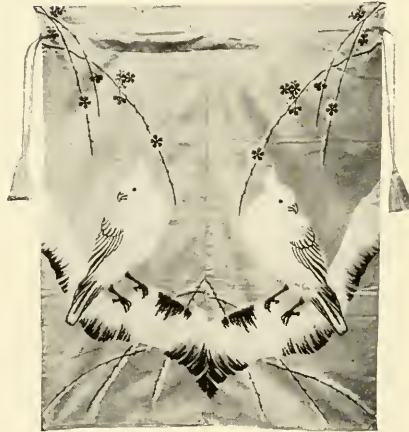
Price prepaid, \$3.75



9125

No. 9125. Banko Porcelain Wall Flower Holder, woven basket with cat and mice design. Made in Yokkaichi, Japan. Size 6¼ x 3¾ x 2½ inches.

Price prepaid, 75c.



3460

No. 3460. Japanese Toweling Laundry Bag, made of best quality cotton toweling, dark blue ground, with designs in white, assorted cockatoo, heron, wild goose and small bird designs; size 24 x 31 inches.

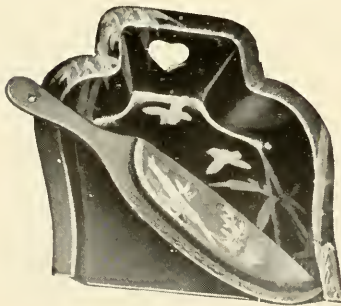
Price prepaid, \$1



2343

No. 2343. Japanese Antimony Metal Cut Flower Bowl and Wood Stand, with metal net cover, white silver finish, embossed hibiscus design; size 3¾ x 4¾ inches.

Price prepaid, \$2.50



2909

No. 2909. Fine Japanese Lacquered Papier Mache Crumb Tray and Scraper. Gold and green bamboo and sparrow design on black ground; size of tray 9 x 9¾ inches.

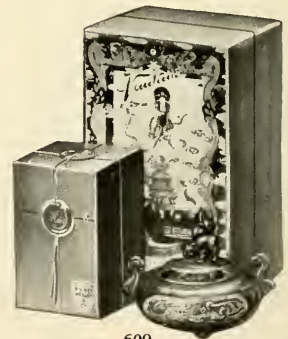
Price prepaid per set, 75c.



8811

No. 8811. Japanese Iron Lantern for bungalow or outdoor use, lined with green or red silk; size 11¼ x 9¼ inches.

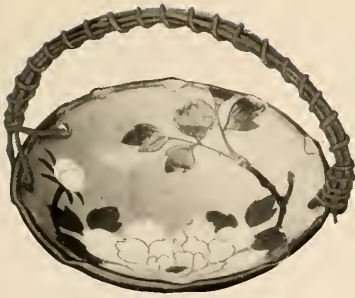
Price prepaid, \$3



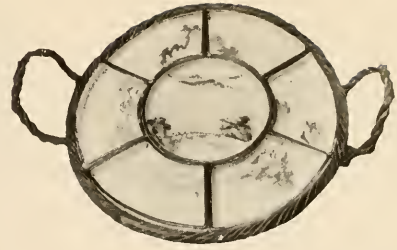
609

No. 609. Vantine's Special Incense Set, consisting of one 4 oz. package of our famous Temple Incense and one Sentoku Inlaid Bronze Incense Burner in specially designed box.

Price complete prepaid, \$2



9676



10007

No. 10007. Japanese Crackle Pottery Curry Set, consisting of 7 removable glazed pottery dishes and a brown bamboo tray. Japanese landscape design in delft blue. Size 13 inches diameter; center dish measures 6 inches diameter. **Price prepaid set, \$2.75**

No. 9676. Ninsei Wistaria Wickered Fruit or Cake Tray, grayish ground with assorted floral designs; size 8¾. **Price prepaid, \$1.50**



16016



16020

No. 16020. Fine Cherry Lacquer Wood Butler's Tray, with handsome bird and landscape design in gold painted on the surface of the lacquer. Come in two sizes:

10½ x 17 inches.....Price prepaid each, \$1.50  
 11¼ x 18 inches.....Price prepaid each, 1.75  
 Set of 2.....Price prepaid, 2.75

No. 16016. Fine Cherry Lacquer Wood Butler's Trays, with a beautiful floral design under the lacquer. Come in two sizes:

12¾ x 23 inches.....Price prepaid each, \$2.25  
 13¾ x 24 inches.....Price prepaid each, 2.75  
 Set of 2.....Price prepaid set, 4.50



2100

No. 2100. Bagdad Portieres or Couch Covers, principally from Koro Hissai, Asia Minor, 5 feet wide by 9 feet long, come in broad stripes of terra cotta, red, old blue, cream and gold with unique hand-embroidered Far Eastern designs. **Price (cotton) prepaid, \$5; price (wool) prepaid, \$15**

Vantine's assortment of Couch Covers includes an extensive line in all the popular colorings. **Prices, \$5 to \$25**



7081

No. 7081. Artistic Kochi Ware Lamp with porcelain portable in yellow, brown or green, woven in a network of brown bamboo with wicker shade, Empire shape, lined in Oriental silk to match, fitted for one electric bulb; height 26 inches, diameter of shade 22 inches.

Price packed for shipment, \$16



7484

No. 7484. Beautiful Lamp of Chinese porcelain, prettily decorated in red peony design, and all-over scroll pattern in green. Brass mountings, antique finish. Old gold Oriental silk shade, Empire shape, with galoon braid and fringe to match; height 23 inches, diameter of shade 16 inches.

Price packed for shipment, \$23.75



8776

No. 8776. An artistic Oriental Lamp with portable of Kochi ware that may be had in yellow, brown or green. Shade, Empire shape, lined with Oriental silk in color to match portable; height 24 inches, diameter of shade 18 inches.

Price packed for shipment, \$10.50

**T**HE Vantine assortment of distinctive and individual Oriental lamps is the largest in this country and includes table, hall, parlor and banquet lamps in designs to be found nowhere else. Many of our lamps are made from odd vases, porcelains, bronzes, etc., carefully selected from our finest pieces. Each lamp is not only practical, but artistically valuable. Upon request, we shall mail post-paid photograph and complete information regarding any lamp in our collection.



6921

No. 6921. A popular Bowl-shape Lamp with base of yellow Kochi ware enveloped in hand-woven split bamboo covering; has hand-woven bamboo shade 20 inches in diameter, with lining of brocaded Oriental silk in golden yellow; has duplex burner and removable oil fount; height 22 inches. Price complete packed for shipment, \$15.75.



7119

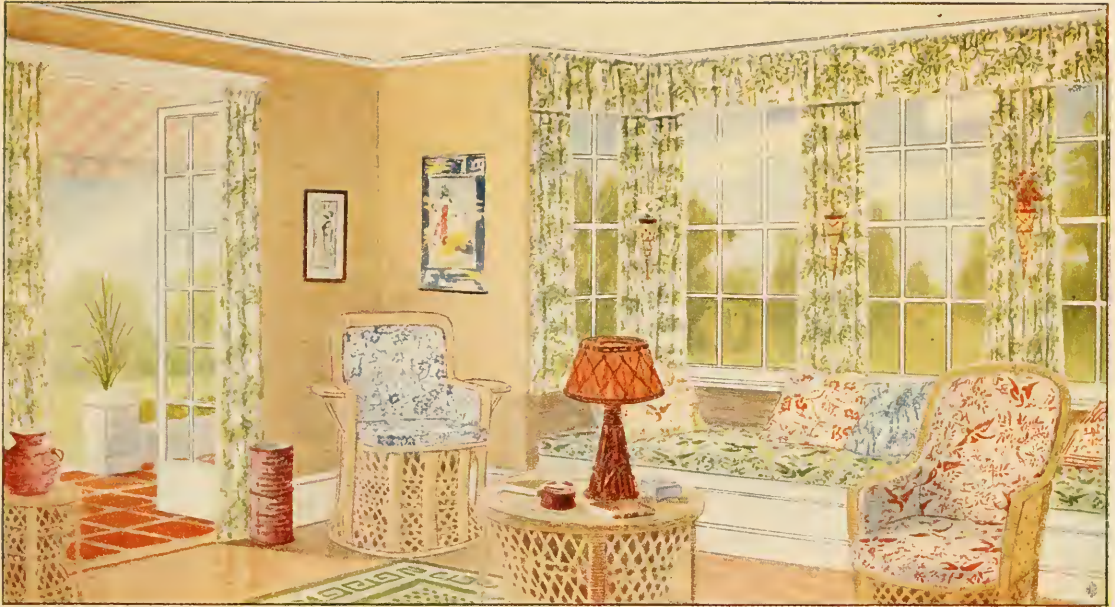
No. 7119. Damascus Brass Lamp and Shade, openwork and engraved geometrical and scroll designs, shade lined with silk has beaded fringe; fitted 2-light electric, one of which lights up the portable, the other the shade. Height 25½ inches, diameter 15 inches. Price complete packed for shipment, \$27.50.



6922

No. 6922. Distinctive Oil Lamp with green Kochi vase enveloped in hand-woven coloring of bronze colored bamboo; has hand-woven shade of brown bamboo with lining of brocaded Oriental silk to match; diameter of shade 20 inches; height over all 25 inches. Price packed for shipment, \$13.75.





An effective arrangement of Vantine's Japanese Figured Cotton Crepe in designs and colors illustrated in the pages following

## VANTINE'S JAPANESE COTTON CREPE



To facilitate the ordering by mail, of Vantine's Japanese Cotton Crepe, we illustrate in the following pages reproductions in actual colors, of this unique Oriental fabric, which has become so popular with American women.

The designs of the figured and striped patterns shown are reduced in size, but the colors are the exact reproductions and you may order with the assurance that the material will be entirely satisfactory or may be returned (when ordered in quantities of 5 yards or more), for exchange, credit or refund.

Of all the fabrics we import, there is none more in demand than Japanese Cotton Crepe, which is woven on hand looms, by Japanese girls, who dip their hands in bee's wax as they weave to produce the desirable "crepey" effect that is characteristic of the goods.

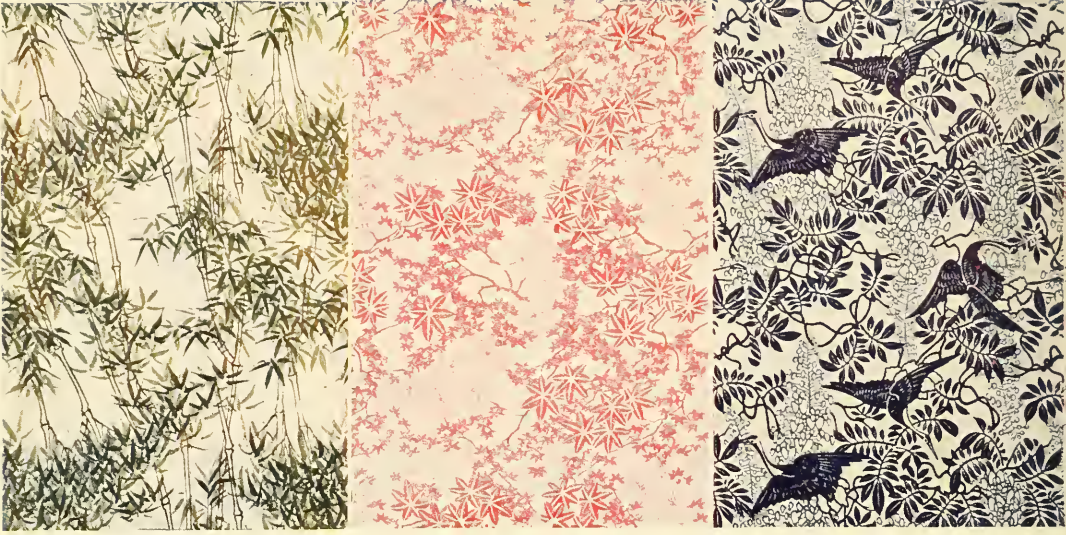
The Japanese Cotton Crepe imported by us is strong in texture, light in weight, requires no ironing and becomes "crepier" the oftener it is washed.

The dainty and artistic designs in the figured patterns are stencilled in dyes, noted for their durability and are in beautiful, rich shades of the colors shown, while some of the patterns of striped Cotton Crepes originated with and are confined exclusively to Vantines.

Our Japanese Figured Cotton Crepe is 30 inches wide, and is forwarded by parcel post prepaid for 35 cents per yard; our Japanese plain crepe, is 30 inches wide, and is mailed prepaid for 30 cents per yard.

In addition to the colors and designs illustrated we carry in stock, plain white Japanese Cotton Crepe 30 inches wide, which we can supply at 30 cents per yard, and in the finest quality at 85 cents per yard.

## VANTINE'S JAPANESE FIGURED COTTON CREPE



2642

2695

2660

For portieres, window curtains, table scarfs, pillow and couch covers, kimonos, laundry bags, etc., etc. Each of the patterns illustrated comes in all of the six colors shown below. Price per yard, prepaid, 30 inches wide, 35 cents.



Gold

Green

Rose

Brown

Red

Delft

These illustrations show the colors in which we can supply the patterns reproduced at the top of this page. In ordering be sure to state design number and color desired.

VANTINE'S JAPANESE PLAIN COTTON CREPE

1

80

110

88



130

123

135

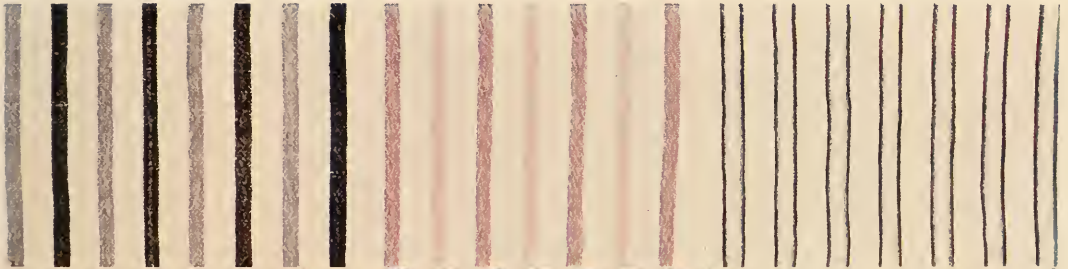
134

Suitable for tub dresses, shirtwaists, children's rompers, underwear, draperies, etc. Has all the smartness of linen, but does not wrinkle readily. Improves with washing and requires no ironing. (In addition to colors shown may also be had in white). Price per yard, prepaid 30 inches wide, 30 cents.

108

114

36



10

113

101



Vantine's Japanese Striped Cotton Crepe for men's shirts, ladies' waists and dresses, children's dresses and play suits, etc. Cool and clean looking patterns, especially suitable for warm weather wear. Price prepaid per yard, 30 inches wide, 35 cents.



### CANTON CHINA



EVERYBODY knows Canton China — the always popular "willow" pattern — with its pagodas, bridges, streams, boats, little figures of men and women, and the love birds. A quaint legend has it that the story depicted on the china tells how a mandarin had an only daughter, Li-Chi, who fell in love with her father's secretary, Chang.

¶ The mandarin forbade the match, so the lovers eloped, hiding for a time in a gardener's cottage, until at last they attempted to make their escape to an island which was Chang's home. The mandarin pursued them, whip in hand and would have killed them had not the gods come to the rescue and changed the two into a pair of turtle doves.

¶ In the design will be seen the mandarin's house with a fence round it, the gardener's cottage, a bridge over which the mandarin ran after his daughter, who, with a staff in hand, was accompanied by Chang. Above are the turtle doves, and beyond is a boat crossing to the island. At the time of the elopement the willow was shedding its leaves, hence the name of the design.

¶ For over half a century Vantine's has been the headquarters in this country for Canton China, and in no other establishment in the United States may be found such a complete assortment as we always carry in stock.

For complete price list of Canton China, see page 46



## Vantine's Oriental Toilet Requisites

**F**ROM earliest youth the woman of the East studies the art of the toilet seriously. The rich treasures of Oriental knowledge of oils, essences, and tinctures afford her a vast store of materials from which to select the most effective aids to her physical charm. She learns to suggest in her own personality, but always with subtlety, the most exquisite associations of nature—the wistaria arbor in early spring, the complex scents of a garden at noonday, the aromatic fragrance of some precious Eastern wood. In the beauty-loving lands beyond the Pacific, where sense impressions have been trained through generations of luxury and civilization, woman's toilet has been raised to the level of a fine art. Vantine's summer toilet luxuries afford American women the opportunity to select the equipment of their dressing-tables with the same discriminating care that is exercised by the women of the East.

Vantine's talcums, toilet waters, creams and powders are distinctive—unusual. Indispensable for personal daintiness during the summer months, they are also a means of expressing individual taste, as important and far more intimate than the choice of a favorite color or a becoming style.

### VANTINE'S ORIENTAL TOILET WATERS

The elusive fragrance of a fine toilet water refreshes and stimulates, leaving behind only the delicate memory of a perfume and a delightful sensation of wholesome cleanliness. The favorite toilet water should never be absent from the dressing-table or traveling-bag. Vantine's Toilet Waters come in the following odors, daintily packed in characteristic Japanese wrappings.

- Wistaria Blossom, 2 sizes ..... \$1 and \$1.50
- Kutch Sandalwood, 2 sizes ..... 75c and \$1.25
- Geisha Flowers, 2 sizes ..... 75c and \$1.25
- Turkish Rose, 2 sizes ..... 75c and \$1.25
- Oriental Violet ..... 75c and \$1.25

### VANTINE'S ORIENTAL TALCUM POWDERS

Of exquisite purity, ground to impalpable fineness and carefully guarded against any irritating property in either substance or odor. No other toilet article contributes so much to summer comfort as a really fine talcum, freely applied. In tin sifter boxes.

- Wistaria Blossom ..... 25c a box
- Kutch Sandalwood ..... 20c a box
- Sana Dermal ..... 15c a box

The leading merchants carry Vantine's Oriental Perfumes and Toilet Requisites and will gladly acquaint you with the exquisite quality of our productions. Should your merchant not yet have them send your order direct to us.

### VANTINE'S ORIENTAL EMOLLIENTS

To counteract the effect of too much motoring, bathing or golfing. These creams preserve the mid-winter delicacy of the complexion through the dry, hot days of summer.

#### Wistaria Blossom Toilet Cream

- Porcelain Jar ..... 50c
- Collapsible tube ..... 25c

#### Wistaria Blossom Vanishing Cream

- Porcelain Jar ..... 50c
- Collapsible Tube ..... 25c

#### Geisha Disappearing Cream

- Glass Jar ..... 50c

### VANTINE'S ORIENTAL FACE POWDERS

Exquisitely soft and beautifying, these Oriental powders become one with the texture of the skin. Come in white, flesh, pink or brunette.

- Wistaria Blossom ..... 75c a box
- Geisha Flowers ..... 50c a box





No. 2481 (illustrated above). Dainty Combing Jacket of fine quality Japanese cotton crepe, prettily hand-embroidered in floral designs. Comes in pink, gray, lavender and blue. Price prepaid, \$4.50

No. 1379 (illustrated on left). Vantine's Habutai Silk "Pullman" Kimono, designed especially for Pullman car wear. Compactly folded in silk envelope that nicely fits suit case or travelling bag. Collars and sleeves daintily embroidered. Comes in pink, light blue, old blue, old rose, lavender, black, navy, gray and purple. Price prepaid, \$12

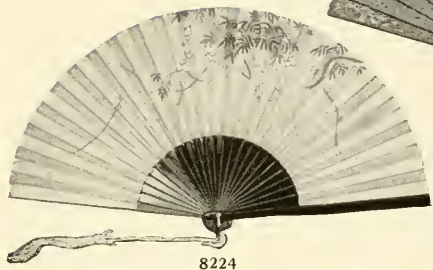
No. 5598 (illustrated on right). This pretty model is made of Habutai silk, with lining and interlining of silk, and is hand-embroidered in cherry blossom, or chrysanthemum designs in natural colors on ground of pink, light blue, lavender, old blue, black and navy. Price prepaid, \$10



No. 3192 (illustrated above). Japanese Hand-printed Habutai Silk Kimono, beautifully printed in floral designs of natural colorings, in harmonious blendings of delicate hues. Comes in white, lavender, old blue, rose, light blue and pink.  
Price prepaid, \$6.75

No. 2457 (illustrated on left). Hand-embroidered Japanese Cotton Crepe Kimono of excellent quality, prettily embroidered in floral designs. Comes in pink, light blue, old blue and lavender grounds.  
Price prepaid, \$6.50

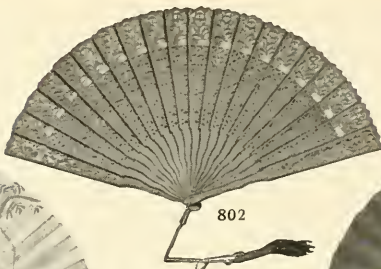
No. 3013 (illustrated on right). Japanese Cotton Crepe Kimono of fine quality, daintily stencilled in floral and bird designs. Comes in pink, light blue, lavender, gray, white, old blue and navy.  
Price prepaid, \$3.50



8224

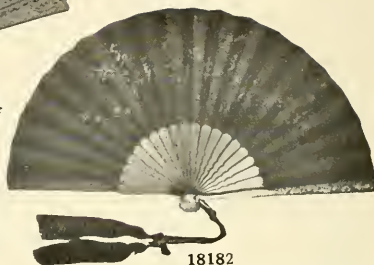
No. 8224. Hand-painted Silk Fan, assorted floral designs on light blue, pink, or light green ground; cherry lacquered sticks, silk tassel; size 8½ inches long.

Price prepaid, 75c.



802

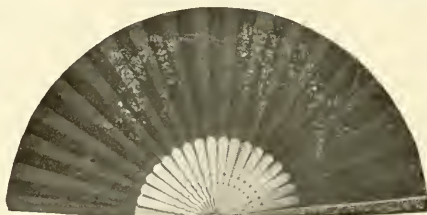
No. 802. Chinese Carved Sandalwood Fan, geometrical designs, silken cord and tassel; 7½ inches long. For actual color see back cover. Price prepaid, 50c.



18182

No. 18182. Black Silk Fan with peony design embroidered in black, carved black bamboo sticks, silk tassel; size 7¼ inches long.

Price prepaid, \$2.75



18180

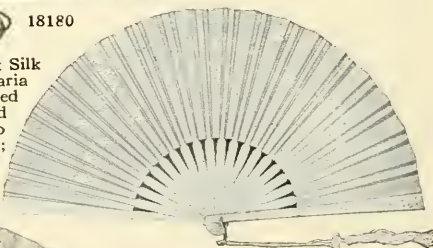
No. 18180. Black Silk Fan, with wistaria design embroidered in black, carved black bamboo sticks, silk tassel; size 8½ inches long. Price prepaid, \$3.75



7521

No. 7521. Embroidered Silk Fan, carved bone sticks, heavy silk cord and tassel, white peony design embroidered on white silk; size 8¼ inches long.

Price prepaid, \$7.50



7520

No. 7520. Embroidered and Hand-painted Silk Fan, floral design, carved bone sticks, silk cord and tassel; 8¼ inches long.

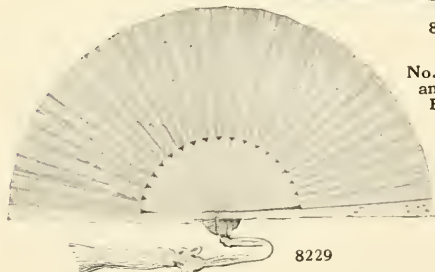
Price prepaid, \$5



8227

No. 8227. Embroidered and Hand-painted Silk Fan, cherry blossom design on light blue, pink or light green ground; 8½ inches long.

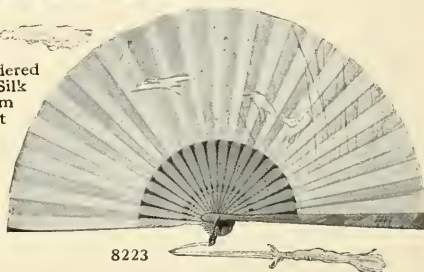
Price prepaid, \$1.25



8229

No. 8229. Embroidered Silk Fan, carved Lone sticks, white cherry design embroidered on white silk, silk tassel; size 8½ inches.

Price prepaid, \$2.25



8223

No. 8223. Hand-painted Fan, flying heron and reed design on light blue, pink or light green ground; silk tassel; size 8¼ inches.

Price prepaid, 75c.





8162

No. 8162. Hand-painted Silk Open Fan, lacquered handle, silk tassel, assorted floral designs on white ground; size  $7\frac{3}{4}$  x  $13\frac{1}{2}$  inches.

Price prepaid, 25c.



8234

No. 8234. Hand-painted Silk Folding Fan, carved bamboo outside, silk tassel, butterfly design in colors on light blue, pink or white ground; size 9 inches. Price prepaid, \$1



8163

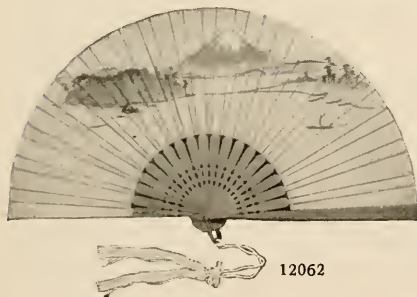
No. 8163. Embroidered and Hand-painted Silk Open Fan, assorted floral designs in natural colors on white ground; size  $7\frac{3}{4}$  x  $14\frac{1}{2}$  inches.

Price prepaid, 50c.



18177

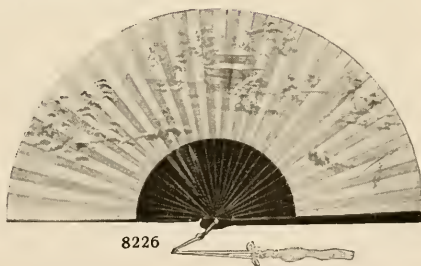
No. 18177. Embroidered All Black Silk Folding Fan, black silk embroidery, black bamboo sticks, hand carved, cord and tassel; size  $9\frac{1}{2}$  inches. Price prepaid, \$6.50



12062

No. 12062. Hand-painted Silk Folding Fan, sandalwood sticks, hand carved, landscape design; size  $8\frac{1}{4}$  inches.

Price prepaid, \$3



8226

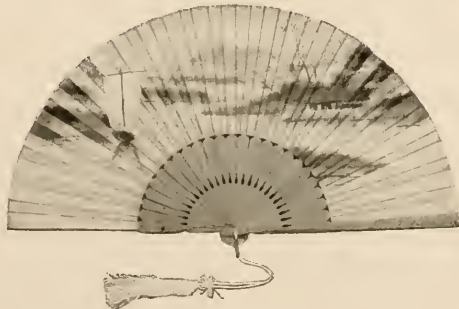
No. 8226. Hand-painted Silk Folding Fan, famous Japanese scenic designs on white ground, black lacquered sticks; size  $8\frac{1}{2}$  inches.

Price prepaid, \$1.50



8231

No. 8231. Child's Hand-painted Silk Fan, sandalwood sticks, assorted floral designs on light blue, pink or white ground. Price prepaid, 75c.



12110

No. 12110. Hand-painted Silk Fan, carved sandalwood sticks, silk tassel; size 9 inches. Price prepaid, \$3.50



8230

No. 8230. Child's Hand-painted Silk Fan, carved bamboo sticks, assorted floral designs on light blue, pink or white ground.

Price prepaid, 35c.



(Illustrations are about one-half actual size)

**T**HE jewel craft of Vantine's is something apart—entirely different—from the ordinary jewelry of domestic manufacture. The clever conceptions cannot be had in any other establishment and they solicit the particular attention of those in search of the curious, the quaint and the beautiful in jewel work.

No. 19910. Solid Silver Filigree Earrings, set with genuine seed pearls. Price prepaid, \$6.50

No. 20372. Solid Silver Earrings, set with genuine seed pearls and lapis lazuli stones. Price prepaid, \$6

No. 20360. Solid Silver Filigree Hoop Shape Earrings. Price prepaid, \$4

No. 20410. Solid Silver Drop Earrings, set in lapis lazuli, topaz, green agate or turquoise matrix. Price prepaid, \$5

No. 20190. Solid Silver Ring in Hotei, "God of Good Fortune," design, with characteristic Oriental design on either side. Price prepaid, \$2

No. 18105. Solid Silver Ring, Buddha design. Price prepaid, \$2

No. 20130. Chinese Silver Ring, with embossed Oriental design. Price prepaid, \$3.75

No. 20413. Solid Silver Drop Earrings, set in genuine topaz or amethyst. Price prepaid, \$3.50

No. 20320. Solid Silver Scarf Pin, oxidized finish, mounted in leaf design, set with genuine topaz or amethyst. Price prepaid, \$1.50

No. 20323. Solid Silver Scarf Pin, oxidized, mounted in leaf design, set with genuine lapis lazuli, moonstone, garnet, green agate or carnelian. Price prepaid, \$1.50

No. 20414. Solid Silver Filigree Earrings, hoop shape. Price prepaid, \$4

No. 20415. Solid Silver Filigree Ball Earrings. Price prepaid, \$5

No. 20434. Solid Silver Necklace, set with semi-precious stones, length 28 inches, excluding drop. Price prepaid, \$15

No. 20140. Solid Silver Filigree Necklace, oxidized finish, set with genuine lapis lazuli, length 26 inches. Price prepaid, \$14

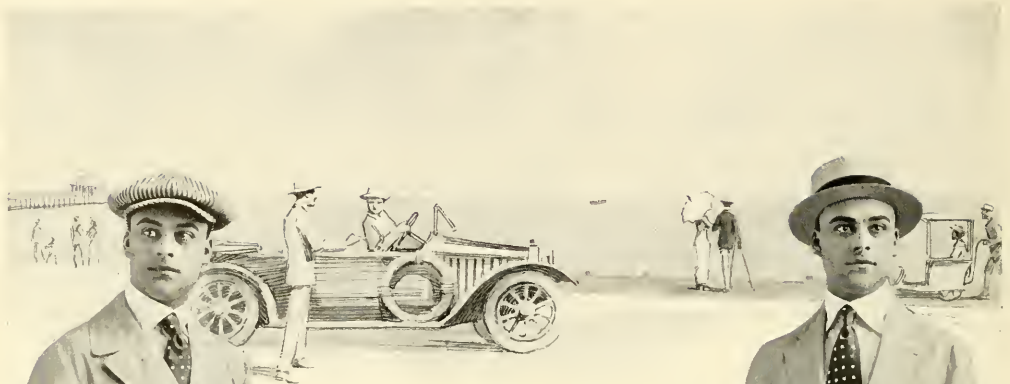
Any of the Earrings illustrated may also be had in gilt finish without extra charge. In ordering Earrings be sure to state whether they are for pierced or unpierced ears



Illustrations show exact size

- No. 16725. Sterling Silver Brooch, green agate, intaglio elephant with howdah (trappings). Price prepaid, \$5
- No. 15858. Sterling Silver Chinese Ring, with adjustable band; jade stones inset at either side. Price prepaid, \$5
- No. 16343. Sterling Silver Brooch, amethyst or topaz setting. Price prepaid, \$5
- No. 15973. Sterling Silver Cuff Links, chrysanthemum design. Price per pair, prepaid, \$4
- No. 16456.\* Sterling Silver Bar Pin. Price prepaid, \$2
- No. 15974. Ladies' or Gentlemen's Sterling Silver Cuff Links. Price per pair, prepaid, \$4
- No. 15615.\* Ladies' or Gentlemen's Sterling Silver Ring. Price prepaid, \$3
- No. 15620.\* Ladies' or Gentlemen's Sterling Silver Ring. Price prepaid, \$3
- No. 15613.\* Ladies' or Gentlemen's Sterling Silver Ring. Price prepaid, \$3
- No. 15972. Sterling Silver Cuff Links, in Japanese "good luck" design. Price per pair, prepaid, \$4
- No. 16440.\* Ladies' Sterling Silver Pendant. Price prepaid, \$2
- No. 16440A. 16-inch Oxidized Sterling Silver Chain to hold Pendant No. 16440. (Not illustrated) Price prepaid, \$1
- No. 15809. Sterling Silver Brooch, set with amethyst or topaz. Price prepaid, \$5
- No. 16559.\* Sterling Silver Pendant. Price prepaid, \$2
- No. 15964. Sterling Silver Cuff Links, Japanese character design meaning "good luck." Price per pair, prepaid, \$4
- No. 14637. Ladies' Chinese Ring, sterling silver, carved dragon design, set with Chinese jade. Price prepaid, \$16
- No. 16583. Ladies' Sterling Silver Ring, mounting leaf design, set with amethyst or topaz with smaller stone on either side. Price prepaid, \$3.50
- No. 16698. Ladies' or Gentlemen's Sterling Silver Ring, mounting leaf design with setting of green agate, intaglio elephant with howdah. Price prepaid, \$6
- No. 16005.\* Ladies' or Gentlemen's Sterling Silver Ring, double stone setting. Price prepaid, \$3.50

\* These pieces may be had set with lapis, topaz, green agate, amethyst, carnelian, bloodstone, moss agate and turquoise matrix. In ordering please state stone desired.



Men's Pongee Suits  
and Automobile Coats

**M**ADE especially to our order by one of New York's best tailors, from genuine Chinese pongee, imported by us direct from the Orient. The suits are cut in the popular Norfolk style with two box pleats in back and two in front. The coat has patch pockets that button at top, is unlined to insure comfort in hot weather and has rubber shields in armholes.

Model D comes with attached belt ending at pleats in front, as illustrated, and Model C comes with attached belt extending to and buttoning in center of front. Trousers have side and hip pockets, belt loops and cuffs.

The Automobile Coats are cut in the double-breasted style, have adjustable belt at back and convertible collar. Pockets on side made so that pockets of suit under coat may be conveniently reached. Sleeves have attached wristlets inside to guard the arms against wind when driving. Carefully tailored and finished perfectly.



Both Suit and Automobile Coat may be ordered from this page with our assurance of satisfaction, but if requested, we shall mail post-paid samples of material from which these garments are made.

Prices, according to weight of pongee used

AUTO COATS

Give chest measure, weight and height when ordering  
 No. 3400A ..... Price prepaid, \$18  
 No. 3400B ..... Price prepaid, 25

SUITS

No. 3400C1 ..... Price prepaid, \$25  
 No. 3400C2 ..... Price prepaid, 30  
 No. 3400D1 ..... Price prepaid, 25  
 No. 3400D2 ..... Price prepaid, 30

When ordering please copy and fill out the following measurement blank

Height	Weight	Breast	Waist	Sleeve <small>Take with coat on</small>	Waist	Inseam	Outseam
		Around body at breast, close up under arms.	All around body at waist, just above hip bones.	From center of back to shoulder seam Inches ..... Continue to elbow Inches ..... Then to wrist Inches .....	All around body at waist over trousers, just above hip bones.	From close up in crotch to heel seam of shoe.	From belt line to heel of shoe.
Feet .....							
Inches .....	Lbs. ....	Inches .....	Inches .....	Inches .....	Inches .....	Inches .....	Inches .....

As all Suits are made in exactly the measurements sent us, they are not returnable



34956

No. 34956. Japanese Ash Receiver, 3 $\frac{3}{4}$  x 3 $\frac{3}{8}$ , with heavily lacquered "shell" artistically hand-decorated in pretty Oriental design. Has removable tin receptacle inside (that is completely concealed) which may be easily removed, and ashes emptied. Top is of heavy nickel with three heavily moulded cigar or cigarette holders; and circular disc in center that automatically revolves when ashes are dropped upon it, depositing the ashes in the receptacle within. Especially appropriate for porch use, as wind cannot scatter the ashes and when used in the home or office completely confines all odor of tobacco. Each receiver carefully packed and forwarded by parcel post prepaid for \$1.



3500

No. 3600. To the man who seeks a silk coat for office or home wear—a coat that is carefully tailored throughout, in the best possible workmanship and one that will fit perfectly, we offer the Vantine Silk Coat. Made especially to our order by a Fifth Avenue tailor, from black Habutai silk, in the proper weight or natural color Chinese silk pongee. Cool, comfortable and very durable. (In ordering simply state chest measure and whether a coat of Habutai silk or pongee silk is desired.) Price prepaid, in sizes up to and including 42 inch chest measure, \$7.

No. 3601. Sizes 44 and larger, \$7.50



35421

No. 35421. Japanese Cigarette Box of highly finished lacquer, beautifully decorated in floral and bird designs, hand-painted in heavy gilt. By pressing spring the stork dives into box, the cover of which is raised simultaneously, opens its bill and when spring is released assumes the position shown with cigarette in bill, the cover falling automatically in place. Size 2 $\frac{3}{4}$  x 4 $\frac{1}{4}$  x 5 $\frac{1}{2}$ .

Price prepaid, \$2.75



15214

No. 15214. Japanese Doroyaki Pottery Tobacco Jar, representing the famous "Badger teapot," bronze color; has sponge holder in cover to keep tobacco fresh; size 8 $\frac{3}{4}$  x 6 $\frac{1}{2}$  inches.


Price prepaid, \$1.50



2369

No. 2369. Antimony Metal Cigarette Box, heavy embossed floral design. Cigarettes are presented by lifting and lowering top. Unique gift that any smoker will appreciate; size 4 x 2 $\frac{3}{4}$  x 2 $\frac{3}{8}$  inches.

Price prepaid, \$1.75



### Oriental Silk Neckwear

Distinctive and individual scarfs in all of the newest and most popular shapes. Made especially to our order by neckwear specialists from genuine Oriental silks. Many of the colors and all of the designs confined exclusively to Vantine's.

No. 3502. Four-in-hand Neckties of Tanriyoku crepe, all colors, Chinese natural colored pongee; reversible. **Price prepaid, \$1**

No. 3503. Men's Neckties, wide end, of heavy brocades, printed pongs and numerous exclusive Oriental fabrics. **Price prepaid, \$1.50, \$2.00 and \$2.50**

No. 3504. Men's Bow Ties in a variety of patterns, including the popular "polka dot" designs. **Price prepaid, 75c.**



### Japanese Paper Parasols and Lanterns

**J**APANESE Parasols with bright colored ornamentalations, used to suspend from ceilings, front of fireplaces, etc., etc. Come in both paper and oil paper, the latter waterproof. In large sizes may be used for lawn tents, as they have jointed handles, part of which may be left permanently in the ground and the umbrella removed at pleasure; decorations consist of birds, flowers and unique Oriental designs on tinted grounds.

Single paper, painted outside.  
 24 inch diameter ..... Price per dozen prepaid, \$2.40  
 30 inch diameter ..... Price per dozen prepaid, 3.00  
 36 inch diameter ..... Price each prepaid, .75  
 48 inch diameter ..... Price each prepaid, 1.00

Better quality.  
 30 inch diameter ..... Price each, 1.00  
 36 inch diameter ..... Price each, 2.00

Double Paper Umbrellas, covered brace, bright floral and figured designs, painted both sides:  
 6 feet diameter ..... Price prepaid, \$1.25  
 7 feet diameter ..... Price prepaid, 1.50

8 feet diameter ..... Price each prepaid, \$2.00  
 10 feet diameter ..... Price each prepaid, 3.00  
 12 feet diameter ..... Price each prepaid, 5.00

Double paper, gold and silver on both sides, with bright floral designs, covered brace.  
 3 feet diameter ..... Price each prepaid, \$1.25  
 4 feet diameter ..... Price each prepaid, 1.75  
 5 feet diameter ..... Price each prepaid, 2.25  
 6 feet diameter ..... Price each prepaid, 3.00  
 7 feet diameter ..... Price each prepaid, 4.00  
 8 feet diameter ..... Price each prepaid, 5.00  
 9 feet diameter ..... Price each prepaid, 6.75  
 10 feet diameter ..... Price each prepaid, 8.00  
 12 feet diameter ..... Price each prepaid, 12.00

The paper lantern (Japanese Chochin) plays an important part in Japan. The houses and verandas are lighted with them at night, and with their help one picks his way afoot or in Jinrikisha on the street. They illuminate the water on the evening boat ride; tea houses, theatres and other pleasure resorts are distinguished by rows of variegated paper lanterns, and in the great temple feasts the Chochin are a feature in the parades. Often a whole street, even an entire quarter in the vicinity of the temple is adorned with paper lanterns hanging on bamboo canes, sometimes canopied with large umbrella frame, whose long beams are trimmed with white and red paper flowers. Our assortments are unequalled for beauty, and comprise all varieties.

Fancy shaped "Gifu" paper lanterns, as illustrated on page 37, with candle holder, silk tassel and lacquered wood hanger. Come packed assorted, 12 shapes and designs to a box, with the exception of 10825, which has 24 lanterns to a set. We do not break sets. Price, prepaid, per set:

No. 10832. 5½ inch diameter ..... \$1.50	No. 10825. 8 inch diameter ..... \$3.00
No. 10827. 7 inch diameter ..... 2.00	No. 10839. 10 inch diameter ..... 3.00
No. 10838. 8½ inch diameter ..... 2.25	No. 10835. 10 inch diameter ..... 3.00
No. 10834. 8½ inch diameter ..... 2.25	No. 10829. 10 inch diameter ..... 3.75
No. 10826. 8½ inch diameter ..... 2.50	No. 10836. 12 inch diameter ..... 4.50
No. 10828. 8½ inch diameter ..... 3.00	No. 10840. 12 inch diameter ..... 4.50

#### OIL PAPER LANTERNS

Diameter	Length	Shape	Price	Width	Length	Shape	Price
8½ inch	11 inch	Round	\$.50	12 inch	17 inch	Oblong	\$1.00
11 inch	12½ inch	Round	1.00	12½ inch	46 inch	Oblong	1.50
14½ inch	17 inch	Round	1.25	15½ inch	30 inch	Oblong	1.50
20 inch	24 inch	Round	2.50	16½ inch	21½ inch	Oblong	1.50
	Width	Length	Shape	Price			
6½ inch	12 inch	Oblong	.50	18 inch	36 inch	Oblong	2.50
8½ inch	14 inch	Oblong	.75	19 inch	40 inch	Oblong	3.00
				24 inch	53 inch	Oblong	5.00



10836



10828



10838



10834



10832



10826



10835



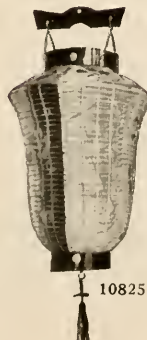
10840



10829



10839



10825



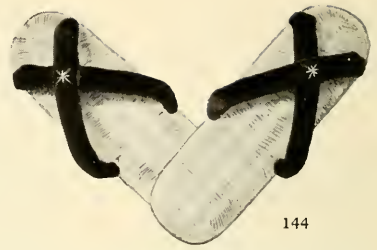
10827

Each assortment includes 12 different shaped lanterns as illustrated above



No. 145. Japanese Straw Sandals, woven by hand of Japanese rice straw. The sole is held securely to the foot by cotton-covered cloth straps that run over the top of the fore part of the foot. Excellent for lounge or bathroom wear; in all sizes. Price prepaid, 50c.

**Please Note:** To insure receiving correct size, it is advisable in ordering articles on this page, to send us an outline sketch of your foot. While seated, place your foot on a piece of white paper, and with a sharp pencil trace the foot's outline all around. Enclose this tracing with your order, being sure to give catalogue number and color when necessary.



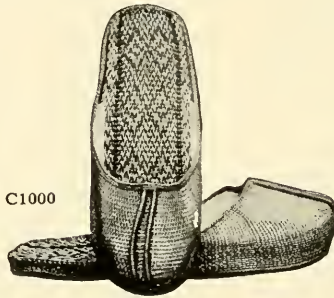
No. 144. Japanese Straw Sandals, made the same as those described under No. 145, but with velvet straps, and with soles of first quality rice straw, reinforced with extra binding to insure long wear; all sizes.

Price prepaid, \$1



2673

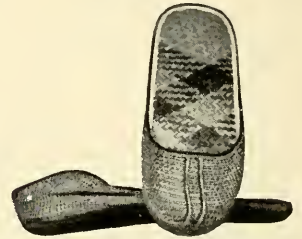
No. 2673. Hand-embroidered Japanese Silk Boudoir Sandals for women, in pink, lavender, light blue, old blue, red, black, and white; in all sizes. (In ordering give the size of the shoe worn.) Price postpaid, 75c.



C1000

No. C1000. Finely Woven Chinese Straw Bath Slippers for men and women, made of selected rice straw, with leather soles, inner sole lined with straw. Come in sizes for men and women only.

Price per pair prepaid, 75c.



3801

No. 3801. Chinese Flat Straw Bath Slippers for men and women, made of Chinese rice straw, with hand-woven sole and vamp.

Price prepaid, 25c.



3800

No. 3800. Women's Hand-made Turkish Slippers from Stamboul (Constantinople). Made of Turkish leathers, have heels and rounded toes, prettily appliqued tinselled design on vamp; leather lined. Has silk pompon of very fine quality. Comes in light blue, dark blue and red.

Price per pair prepaid, \$1.25



7030

No. 7030. Handsomely Hand-embroidered Japanese Silk Sandals for women, flexible sole with interlining of silk, vamp prettily hand-embroidered in floral designs of harmonizing colors; come in pink, lavender and light blue; all sizes.

Price per pair prepaid, \$1.25



259

No. 259. Embroidered Brocaded Silk Chinese Shoes, floral designs in natural colors on light blue, pink, lavender, yellow, red or black ground, leather sole.

Price prepaid, \$2.50

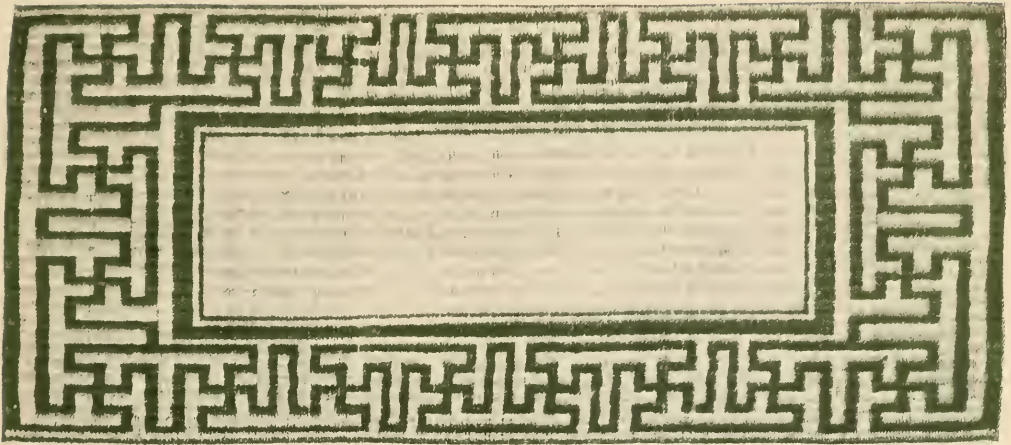


79

No. 79. Embroidered Satin Chinese Shoes, floral designs embroidered in silk in self tones on pink, light blue, lavender, white or black ground, flexible sole.

Price prepaid, \$2.75

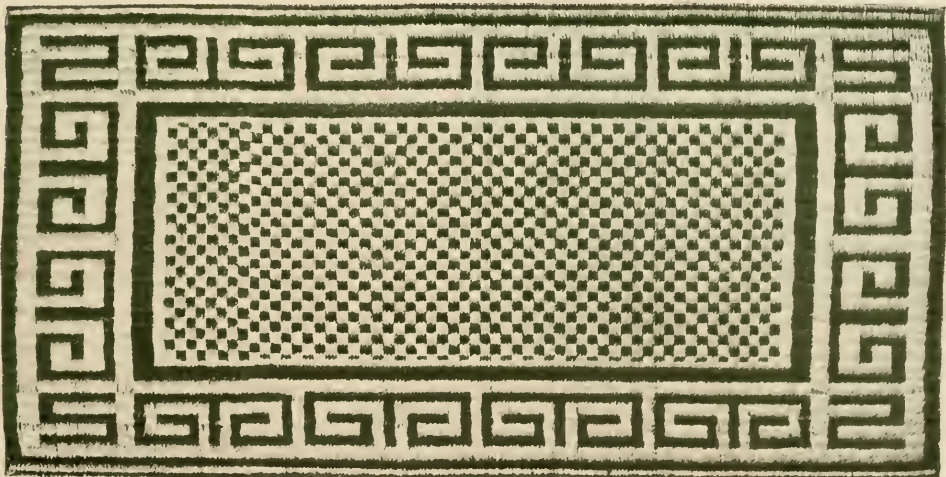




This Rug may also be had in the design of border shown but with checked center, as shown in the center of rug below

**K**EE CHONG Rugs—exclusively Vantine’s—are woven of marsh grass by native Chinese in the Tungkoon district, China. The grass is cultivated for this purpose in low wet lands, which gives it a tough strength without harshness. Water—either rain or sea water—only adds to their strength and durability, and freshens their delightful summery colorings. Come in green and white and brown and white with checked center as shown below, or with plain center as shown above, with Oriental border, as illustrated. (In ordering be sure to state color and size desired). Prices, packed for shipment:

3 x 6 feet.....	\$2.50	4 x 12 feet.....	\$6.75
3 x 9 feet.....	4.00	6 x 9 feet.....	7.00
3 x 12 feet.....	5.00	8 x 10 feet.....	10.50
4 x 8 feet.....	4.50	9 x 12 feet.....	15.00



This Rug also comes with border as illustrated but in plain center, as shown in center of rug above.



4001

**F**OR the dining-room table of the summer home, the sideboard, or the boudoir dressing table, there are no coverings daintier than those illustrated on this page.

**No. 4001.** Chinese Grass Linen Tea Table Cloth, beautifully hand-embroidered, hemstitched border. Comes in dragon design, as illustrated, and floral designs in the following combinations of colors: White embroidery on white ground, blue embroidery on white ground.  
**No. 4001A.** Size 36 x 36 inches... Price prepaid, \$6.50  
**No. 4001B.** Size 45 x 45 inches... Price prepaid, 9.50  
**No. 4001C.** Size 54 x 54 inches... Price prepaid, 12.00

**Nos. 4002A, 4002B.** Chinese Grass Linen Runners, scalloped edge, hand embroidered in floral designs in the following combinations: White embroidery on white ground; (4002A) Blue embroidery on white ground; (4002B) White embroidery on light blue ground. Size 19 x 52. Price prepaid, \$5.50

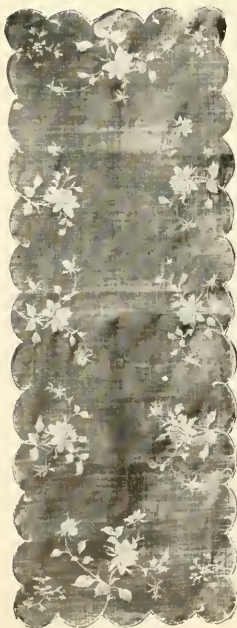
**No. 258 (not illustrated).** Hand-embroidered Chinese Grass Linen Table Sets, consisting of one 28 inch Circular Cover and twelve 6 inch Doilies, scalloped edges, floral and dragon designs in blue on white and white on white to match tea cloths. Price prepaid, \$16.50

**No. 262.** 6 inch Doilies... Prepaid, per dozen, \$6.00

**No. 261.** 10 inch Doilies... Prepaid, per dozen, 9.00

**No. 4003.** Circular cover, 28 inch.

Price prepaid each, 4.50



4002A



4002B

In ordering, be sure to state color and size desired



“Howo” China

“HOWO” Chinaware is Japanese ware, pleasing in design and very serviceable. Ever since Chinaware has been known, its dainty color scheme of blue and white has been much admired. By applications of modern science it has been made particularly strong and durable, and is therefore suited to everyday use. It is said when the “Howo” bird descended from Heaven, there appeared a Wise Man who ruled the country so peacefully that the peasants enjoyed abundant harvests, which spread happiness throughout the land, filling the hearts of all the Japanese people with joy and gladness. In Japan this design is generally called “Howo Moyo”; this is combined with “Kiku” or “Chrysanthemum,” which is the Queen of Flowers and the Emperor’s Crest or Coat of Arms, and representative of the Japanese nation. It is of ancient, historic origin and very unique.

PRICES, PACKED FOR SHIPMENT

Cups and Saucers		Per Dozen	Bowls	
Tea Cup and Saucer		\$ 1.80	Bowl, 9 <sup>3</sup> / <sub>4</sub> inch	Each \$1.00
Breakfast Coffee Cup and Saucer		4.80	Deep Bowl, 8 <sup>1</sup> / <sub>2</sub> inch	Each .60
Uncovered Bouillon Cup and Saucer		4.20	Oatmeal Bowl, 5 <sup>1</sup> / <sub>4</sub> inch	Dozen 2.40
Covered Bouillon Cup and Saucer		4.20	Fruit Dish, 4 <sup>3</sup> / <sub>4</sub> inch	Dozen 1.80
Low After Dinner Cup and Saucer		1.80		Each
High Straight After Dinner		1.80	Oval Covered Vegetable Dish, 10 <sup>3</sup> / <sub>4</sub> inch	2.25
High Fancy After Dinner Cup and Saucer		1.80	Round Covered Casserole, 9 <sup>3</sup> / <sub>4</sub> inch	2.25
	<b>Pitchers</b>	Each	Oval Covered Vegetable Dish, 7 inch	.60
1 Quart Pitcher, large size		1.25	Round Covered Dish on feet, 7 inch	.75
1 Pint Pitcher, scalloped top		.75	Covered Gravy Dish with spoon and stand	1.50
1 Pint Pitcher, High Fancy		.75	Gravy Dish with platter and spoon	.75
Hot Water Pot		.65	Three-piece Mayonnaise Set, plate, dish and spoon	.60
Fancy Shape Coffee Pot		.75	Hot Cake Dish, round, 7 <sup>3</sup> / <sub>4</sub> inch	1.00
Chocolate Pot, scalloped edge		.85		Each
	<b>Plates</b>	Per Dozen	<b>Baking Dishes</b>	Each
Bread and Butter Plate, 6 inch		1.80	Oval Baking Dishes, 7 <sup>1</sup> / <sub>2</sub> inch	.35
Tea Plate, 7 <sup>1</sup> / <sub>2</sub> inch		3.00	Oval Baking Dishes, 8 <sup>1</sup> / <sub>2</sub> inch	.50
Breakfast Plate, 8 <sup>1</sup> / <sub>2</sub> inch		4.20	Oval Baking Dishes, 9 <sup>1</sup> / <sub>2</sub> inch	.75
Dinner Plate, 9 <sup>1</sup> / <sub>2</sub> inch		7.20	Sugar and Creamer, squatty	Set .75
Round Cake Tray, 10 inch	Each	.90	Circular Tea Tile, 6 inch	Each .15
	<b>Egg Cups</b>	Per Dozen		Per Dozen
Double Egg Cup		.60	Custard Cup	1.20
Small Single Egg Cup		1.80	Ramekin	3.00
	<b>Teapots</b>	Each	<b>Platters, Scalloped Edge, Oval</b>	
Squatty, removable strainer, holds 4 cups		.75	7 <sup>3</sup> / <sub>4</sub> inch	Each .35
Extra Large, with removable strainer, holds 8 cups		1.25	9 <sup>3</sup> / <sub>4</sub> inch	Each .60
Tea Strainer, with rest		.25		Each
		Per Dozen	12 <sup>1</sup> / <sub>4</sub> inch	1.00
Coupe Soup Plate or Dish		4.20	14 inch	1.75
	<b>Bowls</b>	Each	16 <sup>1</sup> / <sub>4</sub> inch	2.50
Bowl, 7 inch		.35		Each
Bowl, 8 <sup>1</sup> / <sub>2</sub> inch		.60	<b>Platters, Oval, Straight or Plain Edge</b>	Each
			10 inch	.60
			12 inch	1.00
			14 <sup>3</sup> / <sub>4</sub> inch	2.50
			17 inch	3.00



## Sedji China

**S**EDJI WARE is, as illustrated, Japanese china of a delightful shade of green and closely resembles ancient China "Celandon," or color of the sea from which it takes its name. This ware is held in the highest esteem by the Japanese people, who are experts in the selection of artistic porcelains. The shapes, beautiful in their simplicity, are covered with a satiny glaze that is blown on a pure white body, resulting in a dainty table service that is both distinctive and moderate priced.

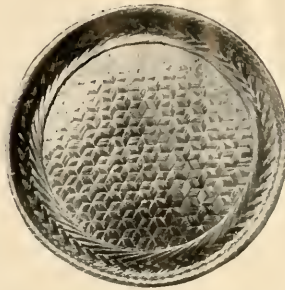
### PRICES PACKED FOR SHIPMENT

	Dozen		Each
Plates, flat, 6 inch, bread and butter.....	\$ 2.40	Vegetable Dishes, round, with cover, 10 inch.....	\$2.50
Plates, flat, 7 $\frac{1}{4}$ inch, tea.....	4.20	Vegetable Dishes, oval, with cover, 10 $\frac{1}{2}$ inch.....	2.75
Plates, flat, 8 $\frac{1}{4}$ inch, breakfast.....	6.00	Vegetable Dishes, covered, on feet, round.....	1.00
Plates, flat, 9 $\frac{3}{4}$ inch, dinner.....	9.00	Vegetable Dishes, 7 $\frac{1}{4}$ inch, oval.....	.75
	Each		
Teapot, squatty, holds four cups.....	.75	<b>Creamers and Sugar Bowl Sets</b>	
Teapot, with removable strainer, holds six cups, medium size.....	1.00	Protected Spout Creamer, Handled Sugar Bowl..	.75
Teapot, extra large size, holds eight cups.....	1.25	Squatty Creamer and Handled Sugar Bowl.....	.75
Tiles, circular, 6 $\frac{1}{2}$ inches diameter.....	.25	Cream Pitcher, high.....	.25
Tiles, square, 6 x 6 inches.....	.35		
	Dozen	<b>Bowls</b>	
<b>Cups and Saucers</b>		Salad Bowl, 8 $\frac{1}{2}$ inch diameter.....	.75
Tea Cup and Saucer, white lined.....	3.00	Mayonnaise Bowl, 6 $\frac{1}{2}$ inch diameter.....	.35
Tea Cup and Saucer, solid green.....	4.20	Oatmeal Bowl, 5 $\frac{3}{4}$ inch diameter.....	.20
Bouillon Cup, without cover.....	4.20	Coupe Soup Plate or Dish, 7 $\frac{1}{4}$ inch.....	.35
Coffee Cup and Saucer, breakfast size.....	5.40	Butter Tub with perforated bottom.....	.75
High After Dinner Cup and Saucer.....	3.00	Baker, oval, 8 $\frac{1}{2}$ inch.....	.50
	Each		Dozen
Platters, 9 $\frac{1}{2}$ inch, scalloped edge, oval.....	.75	Double Egg Cup.....	2.40
Platters, 10 $\frac{1}{2}$ inch, scalloped edge, oval.....	1.25	Mayonnaise Spoon.....	1.80
Platters, 14 inch, scalloped edge, oval.....	2.00		Each
		Fancy Shape Pint Pitcher, 6 inch.....	.75



9942

No. 9942. Bamboo and Wistaria Wicker-covered Red Imari Hand-painted Porcelain Fruit Baskets.  
 9 in. diam. . . . . Price prepaid, \$1.25  
 10 in. diam. . . . . Price prepaid, 1.50  
 11½ in. diam. . . . . Price prepaid, 2.00  
 Set of three. . . . . Price prepaid, 4.00



9956

No. 9956. Brown Woven Bamboo Serving Trays, strongly made; well polished.  
 15 in. diam. . . . . Price prepaid, \$1.50  
 16½ in. diam. . . . . Price prepaid, 1.75  
 18 in. diam. . . . . Price prepaid, 2.00  
 Set of three. . . . . Price prepaid, 4.50



7692

No. 7692. Brown Bamboo Sandwich Baskets, used with and without plates.

Price with Chinese Green and Gold Medallion Plate (as illustrated), large size \$2; small size \$1.75.



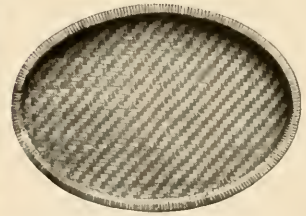
35700

No. 35700. Hand-woven Split Bamboo Satchels, made in Japan. Very popular for carrying bathing suits, etc., a practical traveling satchel that is also light in weight. Comes in five sizes: 4x4½x9 inches, 25c.; 5½x6x11 inches, 35c.; 7x8x12½ inches, 50c.; 7½x9x16 inches, 60c.; 9½x11x18 inches, 75c.



4301

No. 4301. Hand-woven Suitcase of split bamboo, telescope style, with leather handle and leather straps. Tough, pliable and durable; comes in five sizes. Prices prepaid, 5x8x16 inches, \$1; 5x10x18 inches, \$1.50; 5½x11½x20 inches, \$2; 6x13x21 inches, \$2.50; 6x15x24 inches, \$2.75.



18955

No. 18955. Hand-woven Rattan Trays made in interior of China. Circular or oval shape. Prices prepaid, circular shape, 13½ inches diameter, 50c; 15 inches, 60c; 16 inches, 70c; 17½ inches, 80c; 19 inches, 90c; 20 inches, \$1. Oval shape, 14 inches long by 8 inches wide, 50c; 15x9½ inches, 75c; 16x10½ inches, \$1; 18x12 inches, \$1.25; 19½x13½ inches, \$1.50; 21x15 inches, \$1.75.



4302



4303



4304

The unique and artistic lamp shades illustrated are woven by hand in the Orient from carefully selected split bamboo, highly finished in rich dark brown bronze color.

Each shade is lined and interlined with fine quality Oriental silk artistically arranged, and may be had in red, green, yellow and brown in all of the sizes stated. The prices quoted include all necessary holders for using the shades as intended—for oil or electricity.

In ordering please be sure to state color and size of shade desired and whether shade ordered is wanted for oil or electric lamp.

No. 4302. Basket Shape. Sizes: 14 in., \$3; 16 in., \$3.50; 18 in., \$4.25; 20 in., \$5.25; 22 in., \$6.50.

No. 4303. Empire Shape. Sizes: 14 in., \$3.25; 16 in., \$3.75; 18 in., \$4.50; 20 in., \$5.50.

No. 4304. Cone Shape. Sizes: 14 in., \$2.50; 16 in., \$3.25; 18 in. \$4.25; 20 in., \$5.25.

## Oriental Delicacies

## TEAS

## ORANGE PEKOE

A favorite afternoon tea, delicate and fragrant

$\frac{1}{4}$ lb. tins.....	\$ .30
$\frac{1}{2}$ lb. packages.....	.50
1 lb.....	1.00

## ENGLISH BREAKFAST

No. 1.....	1 lb. .40
No. 4.....	$\frac{1}{2}$ lb. .50; 1 lb. 1.00

## FORMOSA OOLONG (Black)

No. 10.....	1 lb. .40
No. 13.....	$\frac{1}{2}$ lb. .50; 1 lb. 1.00

## MANDARIN OOLONG

$\frac{1}{4}$ lb. \$1.50	$\frac{1}{2}$ lb. \$3.00	1 lb. 6.00
Attractive double covered lacquered tins, filled with Orange Pekoe or other teas of same grade.		
Small size, .50	Medium size, .90	Large size, 1.50

## UNCOLORED JAPAN

No. 25.....	1 lb. .40
No. 28.....	$\frac{1}{2}$ lb. .50; 1 lb. 1.00

## CEYLON

No. 35.....	1 lb. .40
No. 36.....	1 lb. .60
No. 37.....	$\frac{1}{2}$ lb. .50; 1 lb. 1.00
Artistic Tabourettes filled with tea..... 1.00	

## MIXED OR BLENDED

No. 44.....	1 lb. .40
No. 48.....	$\frac{1}{2}$ lb. .50; 1 lb. 1.00

## COFFEE

## YO-SA

A combination of high grade coffees scientifically roasted and blended.

In bean, or ground, air-tight tins.....	.40
10 lbs. lots, per lb.....	.38

## MO-RI

Roasted, bean only.....	.30
-------------------------	-----

## CRYSTALLIZED FRUITS

Grape Fruit Peel (crystallized), per box.....	.50
---	-----

## CHINESE GINGER (Preserved)

In pots, whole pots, \$1.00; $\frac{1}{2}$ s, .60; $\frac{1}{4}$ s.....	.25
Extra Large Blue Jars.....	2.25
Stem, selected pieces, in glass, .50; $\frac{1}{2}$ s.....	.75

## CHINESE CHOW CHOW

## Eight Kinds of Chinese Fruits

Glass jars, in syrup.....	.35
Glass jars, in cognac.....	.50
In pots.....	.75

Our own packing

## DATES

Sugared and stuffed, box.....	.30
Stuffed with whole nuts, round box.....	.35
Stuffed, packed in fancy Japanese box.....	.35

## FIGS

Stuffed with nuts, Japanese box.....	.45
A. A. V. & Co.'s in baskets.....	.30

## RAISINS

Stuffed with figs and chopped nuts.....	.40
---	-----

## JELLIES

Guava, $\frac{1}{4}$ lb. box.....	.10
Guava, $\frac{1}{2}$ lb. box.....	.20
Guava, 1 lb. box.....	.35
Guava Paste.....	.30
Creme de Menthe (individuals).....	.15
Wine Apple (individuals).....	.15
Pousse Cafe (individuals).....	.15
St. Croix Rum (individuals).....	.15
Assorted Fruits, per box.....	.50
Orange and Lemon Slices.....	.50

## CHUTNEY

Major Greys, Sweet Sliced } small, .50; large.....	\$ .75
Bengal Hot, Col. Skinner's }	

## CURRY POWDER

Per bottle.....	.30	.45
-----------------	-----	-----

## NUTS

Almonds, salted or spiced, box.....	.25	.50
Pistachio.....	.35	.65
Pecans, salted or spiced, box.....	.25	.50
Pignolias, salted, in glass.....	.45	.95
Castanas, salted, in glass.....	.55	
Cashews, salted, in glass.....	.50	1.10
Mixed, salted, in glass.....	.50	1.10
Filberts, salted, in glass.....	.55	
Peanuts (Jumbos), in glass.....	.35	
Lychee Nuts, small pit, $\frac{1}{2}$ lb. box.....	.65	
Lychee Nuts, large pit, 1 lb. box.....	.40	

## WAFERS AND CRACKERS

## Domestic

Chocolate Crackers, per box.....	.25
Svea-Wafers, per box.....	.20
Pecanias, per box, .25, .60.....	1.20
Vantine's Rice Wafers, specially made for Afternoon Teas, per box.....	.25

## MARRONS

Glace, in glass jars.....	.45
Stein Ginger.....	$\frac{1}{2}$ lb. .40; 1 lb. .75
Orange Peel.....	$\frac{1}{4}$ lb. .15; $\frac{1}{2}$ lb. .30
Lemon Peel.....	$\frac{1}{4}$ lb. .15; $\frac{1}{2}$ lb. .30
Cumquots (Small Oranges).....	$\frac{1}{2}$ lb. .30; 1 lb. .60
Cumquots in pots.....	.85

## SPANISH NOUGAT

From the best manufacture in Spain, small size tins.....	.35
Large size tins.....	.65

## AUSTRIAN CANDIES

In shape of Shells, Fruits, etc., with fruit centers, fancy jar.....	.45
--	-----

## CONFECTIONERY

Barley Sugar (imported), glass.....	.25
Chocolate Peppermints (Japanese boxes).....	.25
Chocolate Cream Ginger.....	.60
Cream Peppermints.....	.20
Japanese Rice Candy, four flavors.....	.30
Japanese Rice Candy Sticks, 10, .15.....	.25
Japanese Tea Pots, filled.....	.25
Japanese Straw Boxes filled with Chocolates.....	.40
Small fancy boxes filled with Chocolates.....	.10
A. A. V. & Co.'s Sweet Chocolate.....	$\frac{1}{4}$ s .15; $\frac{1}{2}$ s .30

## TURKISH DELIGHT

Assorted flavors with nuts, per box.....	.30 to .60
--	------------

## PRUNES

Stuffed with prunes.....	.75
Stuffed with figs and nuts.....	.50

## OLIVE OIL

1 qt. tins.....	.90
$\frac{1}{2}$ gal. tins.....	1.60
1 gal. tins.....	3.00

## STUFFED CHERRIES..... .30

Rice Flakes, a confection.....	.60
Peanut Flakes, a confection.....	.50

Packed in decorated Japanese Tins

## EGYPTIAN CIGARETTES

## Straw, Plain or Cork Tips

Box of 10.....	.25
Box of 50.....	1.15
Box of 100.....	2.25
Ladies' size, plain only, box of 10.....	.20
Ladies' size, plain only, box of 50.....	1.00

Prices subject to change without notice. We do not prepay the transportation charges on anything on this page

## Japanese Garden Ornaments



22997

No. 22997

Stone Lantern

8 feet high

Price, \$250

Others up to \$650  
each

**I**N Japan the humblest home invariably possesses some sort of a garden, while the gardens of the well-to-do are often veritable places of enchantment. The typical Japanese garden is laid out with winding paths, miniature hills, streams or lakes, and frequently one or more waterfalls. Trees and shrubs are trimmed and trained in curious fashion, while color is an ever-present contrasting beautifier in the shape of blooming bushes as well as those bearing only brilliant hued leaves and occasionally well arranged flower beds.

Recognizing the rapidly growing inclination on the part of owners of American homes to make their gardens more and more an out-of-door part of the home itself, Vantine's maintain a special Japanese gardening department which is prepared at all times to furnish Japanese garden ornaments, including such pieces as stone lanterns, stone animals, bronze lanterns, buddhas, kongs (large pottery jardinières) and various other ornaments.

To those wishing to beautify and create in the exterior environment of the home a refinement and artistic atmosphere which will outlive that to be found in the famous gardens of other countries, we offer the service of this department, and upon request will furnish gratis full information, suggestions, and where necessary, photographs and sketches.

For years Vantine's have been importing, among other Japanese garden ornaments, Japanese stone carvings—and probably in no other establishment in the world may be found such a comprehensive assortment of both antique and modern pieces.

We illustrate on this page only a few of the pieces which are now in stock. As there is but one of each (or one pair) choice must be made subject to previous sale, but in event of previous sale, we shall be pleased to send blue prints of other pieces. Prices quoted are f. o. b. New York but include all necessary crating, etc.



1348

No. 1348

Stone Lantern

6 feet high

Price, \$95

Others at \$60  
each



10771

No. 10771. Stone Rabbit, 8½ x 11½ inches. Each, \$12  
Others from \$7.50 to \$18.



10761

No. 10761. Stone Lion, 13½ x 17½ inches. Each, \$25



10781A

No. 10781A. Stone Turtle, 9 x 13 inches. Each, \$15  
Others from \$5 to \$25.



10764

No. 10764. Stone Standing Rabbit, 12 inches high. Each, \$15  
Others from \$7.50 to \$13.50.



10778B

No. 10778B. Stone Vase for flowers, 7½ x 11 inches. Each, \$7.50  
Others at \$5 each.



10776

No. 10776. Stone Rooster, 11¾ x 13 inches. Each, \$12  
Others from \$9 to \$15.



10767

No. 10767. Stone "Welcome" Cat. Each, \$15  
Others at \$7.50 to \$18.

## Canton China

Illustrated on Page 26

## Canton China

Continued

L. S.—Large Size. M. S.—Medium Size. S. S.—Small Size.

Fine Canton Plates, flat or deep, 9 $\frac{1}{2}$ inch	Dozen	Chocolate Pot, M. S.	Each	\$1.25
Fine Canton Plates, flat or deep, 8 $\frac{1}{2}$ inch	\$10.00	Chocolate Pot, S. S.	1.00	
Fine Canton Plates, flat or deep, 7 $\frac{1}{2}$ inch	8.00	Sugar Bowl, S. S.	1.00	
Fine Canton Plates, flat or deep, 6 inch	7.50	Sugar Bowl, L. S.	1.50	
Canton Plates, flat or deep, 10 inch	5.00	Straight Tea Pots, L. S.	1.50	
Canton Plates, flat or deep, 9 inch	6.50	Straight Tea Pots, M. S.	1.25	
Canton Plates, flat or deep, 7 $\frac{1}{2}$ inch	5.00	Straight Tea Pots, S. S.	1.00	
Canton Plates, flat or deep, 6 inch	3.25		Dozen	3.60
	2.50	Fruit Saucers, 4 $\frac{3}{4}$ inch	3.60	
Covered Hot Water Plate	Each	Cereal Saucers, 5 $\frac{3}{4}$ inch	4.20	
Uncovered Hot Water Plate	1.75	Covered Butter Dish	2.00	
Meat Platters, 10 inch	1.25	Chop Plates, 12 inch	2.25	
Meat Platters, 11 inch	.90	Chop Plates, 13 $\frac{1}{2}$ inch	3.50	
Meat Platters, 12 inch	1.00	Chop Plates, 16 inch	5.00	
Meat Platters, 13 inch	1.25			
Meat Platters, 14 inch	1.50			
Meat Platters, 14 $\frac{1}{2}$ inch	2.25			
Meat Platters, 15 $\frac{1}{2}$ inch	2.50			
Meat Platters, 16 inch	3.00			
Meat Platters, 16 inch	3.75			
Meat Platters, 17 inch	4.50			
Meat Platters, 18 inch	6.00			
Meat Platter with gravy well, 14 inch	4.00			
Meat Platter with gravy well, 15 $\frac{1}{2}$ inch	5.00			
Meat Platter with gravy well, 16 $\frac{1}{2}$ inch	6.00			
Soup Tureen, with stand, L. S.	5.00			
Soup Tureen, with stand, M. S.	4.00			
Covered Vegetable Dish, square, 8 $\frac{1}{2}$ inch	1.50			
Covered Vegetable Dish, square, 9 inch	2.00			
Covered Vegetable Dish, square, 10 inch	3.00			
Covered Vegetable Dish, oval, 9 $\frac{1}{2}$ inch	1.50			
Covered Vegetable Dish, oval, 10 $\frac{1}{4}$ inch	2.25			
Covered Vegetable Dish, oval, 11 $\frac{1}{4}$ inch	3.00			
Sauce Tureen, with stand	1.50			
Low Gravy Boat and Stand	1.00			
High Gravy Boat and Stand	1.50			
Square Salad Bowl	2.00			
Bakers, oblong, 9 inch	1.00			
Bakers, oblong, 10 inch	1.25			
Bakers, oblong, 11 inch	1.50			
Scallops, round, 9 inch	.90			
Scallops, round, 9 $\frac{1}{2}$ inch	1.00			
Scallops, round, 10 $\frac{1}{2}$ inch	1.25			
Bakers, round, 8 inch	1.00			
Bakers, round, 9 $\frac{1}{4}$ inch	1.25			
Bakers, round, 11 inch	1.50			
Pickles, leaf, S. S.	.40			
Pickles, leaf, M. S.	.50			
Pickles, leaf, L. S.	.60			
Fruit Baskets, with stand, 8 $\frac{3}{4}$ inch	2.75			
Fruit Baskets, with stand, 9 $\frac{3}{4}$ inch	3.25			
Fruit Baskets, with stand, 10 $\frac{3}{4}$ inch	3.75			
Pitchers, 3 $\frac{1}{4}$ inch	.75			
Pitchers, 4 inch	1.00			
Pitchers, 1 quart	1.50			
Pitchers, 2 quart	2.00			
Pitchers, 4 quart	2.50			
Odd Dishes, 5 styles	1.50			
	Dozen			
Individual Butters, 2 $\frac{1}{4}$ inch	1.20	Bouillon Cup and Saucer, with cover	Dozen	21.00
Individual Butters, 3 inch	1.50	Coffee Cups and Saucers, 4 $\frac{1}{4}$ inch, low	18.00	
	Each	Coffee Cups and Saucers, 3 $\frac{3}{4}$ inch, low	15.00	
Mugs, 3 $\frac{3}{4}$ inch	.75	Coffee Cups and Saucers, 3 $\frac{1}{4}$ inch, low	13.50	
Creamers, with lip, 3 $\frac{1}{4}$ inch	.75	After Dinner Cups and Saucers, 2 $\frac{1}{2}$ inch	12.00	
Bowls, 5 inch	.25	Regular Shaped Tea Cups and Saucers, 3 $\frac{3}{4}$ inch	15.00	
Bowls, 6 inch	.45		Each	
Bowls, 7 inch	.75	Teapot, straight, L. S.	3.50	
Bowls, 8 inch	1.00	Teapot, straight, M. S.	3.00	
Bowls, 9 inch	1.25	Teapot, straight, S. S.	2.50	
	Dozen	Bowls, 5 inch	1.00	
Bouillon Cups and Saucers, with covers	12.00	Bowls, 6 inch	1.50	
Coffee Cups and Saucers, high, 4 $\frac{1}{4}$ inch	7.50	Bowls, 7 inch	2.25	
Coffee Cups and Saucers, low, 4 $\frac{1}{4}$ inch	7.50	Bowls, 8 inch	3.25	
Unhandled Cups and Saucers, 4 $\frac{1}{4}$ inch	5.00	Bowls, 9 inch	4.50	
Tea Cups and Saucers, high, 3 $\frac{3}{4}$ inch	7.50	Sugar Bowl, L. S.	3.00	
Tea Cups and Saucers, high, 3 $\frac{1}{4}$ inch	6.50	Sugar Bowl, M. S.	2.50	
Tea Cups and Saucers, low, 3 $\frac{1}{4}$ inch	6.50	Sugar Bowl, S. S.	2.00	
Unhandled Cup and Saucers, 3 $\frac{3}{4}$ inch	3.50	Punch Bowls, 10 $\frac{3}{4}$ inch	7.50	
After Dinner Cups and Saucers, 2 $\frac{1}{4}$ inch	4.00	Punch Bowls, 11 $\frac{1}{2}$ inch	9.00	
	Each	Punch Bowls, 13 $\frac{1}{2}$ inch	10.50	
Coffee Pot and Stand, L. S.	3.00	Punch Bowls, 14 $\frac{1}{2}$ inch	12.50	
Coffee Pot and Stand, M. S.	2.50	Punch Bowls, 15 $\frac{1}{2}$ inch	15.00	
Coffee Pot and Stand, S. S.	2.00	Cuspidors, low	3.00	
Chocolate Pot, L. S.	1.50	Cuspidors, high, 14 inch	5.00	
		Cuspidors, high, 15 $\frac{1}{2}$ inch	7.50	

## Chinese Medallion

Illustrated on Page 12

Plates, flat or deep, 6 inch	Dozen	\$10.50
Plates, flat or deep, 7 $\frac{1}{2}$ inch	12.50	
Plates, flat or deep, 8 inch	13.50	
Plates, flat or deep, 8 $\frac{1}{2}$ inch	14.00	
Plates, flat or deep, 9 $\frac{1}{2}$ inch	15.00	
	Each	
Meat Platters, 10 $\frac{1}{2}$ inch	2.00	
Meat Platters, 11 inch	2.50	
Meat Platters, 12 inch	3.00	
Meat Platters, 14 inch	4.00	
Meat Platters, 15 inch	5.25	
Meat Platters, 16 $\frac{1}{2}$ inch	6.50	
Meat Platters, 18 inch	8.00	
Meat Platters, with we, 1, 15 $\frac{1}{2}$ inch	7.50	
Soup Tureen, with stand, L. S.	13.50	
Soup Tureen, with stand, S. S.	10.00	
Covered Vegetable Dish, oval, 10 $\frac{1}{2}$ inch	4.00	
Covered Vegetable Dish, oval, 9 $\frac{1}{2}$ inch	3.00	
Covered Vegetable Dish, square, 9 $\frac{1}{2}$ inch	4.00	
Covered Vegetable Dish, square, 8 $\frac{1}{2}$ inch	3.00	
Gravy Boat and Stand	4.00	
Square Salad Bowl	4.00	
Bakers, oblong, 9 inch	2.00	
Bakers, oblong, 10 inch	2.25	
Bakers, oblong, 11 inch	2.50	
Pickle, leaf, S. S.	.75	
Pickle, leaf, M. S.	1.00	
Pickle, leaf, L. S.	1.25	
Fruit Baskets, with stand, 8 $\frac{3}{4}$ inch	4.00	
Fruit Baskets, with stand, 9 $\frac{1}{2}$ inch	5.00	
Fruit Baskets, with stand, 11 inch	6.00	
Scalloped Nappies, 8 $\frac{1}{2}$ inch	2.00	
Scalloped Nappies, 9 $\frac{1}{2}$ inch	2.50	
Scalloped Nappies, 10 inch	3.00	
Creamer	1.50	
Pitchers, pint	1.75	
Mugs	.75	
Odd Shaped Dishes, 4 styles	2.50	
	Dozen	
Bouillon Cup and Saucer, with cover	21.00	
Coffee Cups and Saucers, 4 $\frac{1}{4}$ inch, low	18.00	
Coffee Cups and Saucers, 3 $\frac{3}{4}$ inch, low	15.00	
Coffee Cups and Saucers, 3 $\frac{1}{4}$ inch, low	13.50	
After Dinner Cups and Saucers, 2 $\frac{1}{2}$ inch	12.00	
Regular Shaped Tea Cups and Saucers, 3 $\frac{3}{4}$ inch	15.00	
	Each	
Teapot, straight, L. S.	3.50	
Teapot, straight, M. S.	3.00	
Teapot, straight, S. S.	2.50	
Bowls, 5 inch	1.00	
Bowls, 6 inch	1.50	
Bowls, 7 inch	2.25	
Bowls, 8 inch	3.25	
Bowls, 9 inch	4.50	
Sugar Bowl, L. S.	3.00	
Sugar Bowl, M. S.	2.50	
Sugar Bowl, S. S.	2.00	
Punch Bowls, 10 $\frac{3}{4}$ inch	7.50	
Punch Bowls, 11 $\frac{1}{2}$ inch	9.00	
Punch Bowls, 13 $\frac{1}{2}$ inch	10.50	
Punch Bowls, 14 $\frac{1}{2}$ inch	12.50	
Punch Bowls, 15 $\frac{1}{2}$ inch	15.00	
Cuspidors, low	3.00	
Cuspidors, high, 14 inch	5.00	
Cuspidors, high, 15 $\frac{1}{2}$ inch	7.50	



Order Blank to be Used in Sending Mail Orders to

**HOW TO SEND MONEY**

Use either U. S. Postal Money Order, Express Money Order, Bank Draft, Your Own Personal Check, Currency Coin, or U. S. Parcel Post Stamps. If necessary to send currency, be sure to register your letter.

*Jantines*  
**The Oriental Store**

Fifth Ave. and 39th St.  
 New York City

STATE HERE AM'T SENT

M. O. \$ \_\_\_\_\_  
 Stamps \$ \_\_\_\_\_  
 Check \$ \_\_\_\_\_  
 Cash \$ \_\_\_\_\_  
 Total \$ \_\_\_\_\_

Send to:

Name \_\_\_\_\_

Street Address \_\_\_\_\_

Town \_\_\_\_\_ State \_\_\_\_\_

R. F. D. \_\_\_\_\_ P. O. Box No. \_\_\_\_\_

Do not write in this space

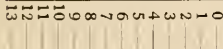
If goods are ordered by one person to be sent to another, put name of recipient in space above, and your name and address on lines following:

Ordered by \_\_\_\_\_ Address \_\_\_\_\_

**MAKE FIGURES PLAIN**

Number in Catalogue	Quantity	DESCRIPTION (COLORS, SIZE, ETC.) OF ARTICLES WANTED	Extend Totals in This Column	
			Price Each or Per Doz.	Total
		Use this line for name and description of article wanted		
		Write on this line, color, size, etc.		
		Use this line for name and description of article wanted		
		Write on this line, color, size, etc.		
		Use this line for name and description of article wanted		
		Write on this line, color, size, etc.		
		Use this line for name and description of article wanted		
		Write on this line, color, size, etc.		
		Use this line for name and description of article wanted		
		Write on this line, color, size, etc.		
		Use this line for name and description of article wanted		
		Write on this line, color, size, etc.		

**HOW TO GET RING SIZE**



Ring Sizes



Take soft piece of thin wire or firm piece of paper and wind it tightly around the finger at the middle joint. Then measure by above scale and send us the number. Remember to use middle joint in ordering.

Occasionally our stock of some particular article becomes entirely exhausted and being so far removed from the Orient it is impossible to promptly procure an additional supply. In such instances a similar article of equal or better value will be forwarded at no increase in price. Any article we substitute may be returned if when received it is not entirely satisfactory. May we substitute?

Be sure to state Size and Color where necessary

TEAR OUT ALONG THIS LINE

# How to Order from Vantine's by Mail

Shopping at Vantine's by mail is as pleasant as personally purchasing in our store. We maintain a prompt and efficient Mail Order Department, and every order with which we are favored receives the careful attention of a staff of experienced shoppers who will select the articles you desire and forward them to you without any unnecessary delay.

Articles ordered for gifts to be forwarded by us direct to the recipient will be carefully and neatly packed, and accompanied, when desired, by a dainty envelope bearing the name of the donor.

---

In ordering by mail, please use the order blank on the reverse side of this page, or write a list of the articles you want on any kind of paper.

Give your name in full, including the name of your post office, street address or R. F. D., county and state.

If your express office or shipping point is different from your post office address, be sure to write us accordingly.

Write the catalogue number, description of articles wanted, and when necessary be sure to state size, color, etc.

In ordering yard goods enclose sample of material desired, and to avoid delay give second choice when possible.

If you have occasion to return goods, be sure to put your name and address on the outside of the package, and under separate cover write us a letter advising us what disposition to make of the goods returned.

Remittances may be made by any of the methods named on the opposite side of this page.

We prepay the transportation charges (except when otherwise noted) on paid purchases only, but will forward by express C. O. D. any article ordered, provided the order is accompanied by a sufficient amount to guarantee express charges both ways.

---

If you will write the names and addresses of your friends on the lines below we will send our catalogues to them, postpaid, and not use your name unless you request us to do so.

Name \_\_\_\_\_ Name \_\_\_\_\_

Address \_\_\_\_\_ Address \_\_\_\_\_

State \_\_\_\_\_ State \_\_\_\_\_

Name \_\_\_\_\_ Name \_\_\_\_\_

Address \_\_\_\_\_ Address \_\_\_\_\_

State \_\_\_\_\_ State \_\_\_\_\_

Additional order blanks may be had free, upon request



## VANTINE'S BON VOYAGE AND GIFT BASKETS

**T**HE long trip across the continent to the Panama Exposition will be made much more enjoyable for your friends if when leaving on their journey you present them with a Vantine Bon Voyage Basket. To "sea-goers" they are also "remembrances" that are never forgotten and as graduation gifts they are sure to be appreciated.

Each basket is filled with an assortment of Oriental delicacies, packed artistically and delivered to the recipient with the card of the donor enclosed.

### Basket No. 1

Contains stuffed cherries, nuts, sugared dates and perfumed candies, neatly bound with beautiful satin ribbon, large bow on top - - - - - Price \$1.25

### Basket No. 2

Contains sugared dates, crystallized ginger, oranges, lime mints, chocolate, nuts, Japanese midzuame (candy) - - - - - Price \$2.50

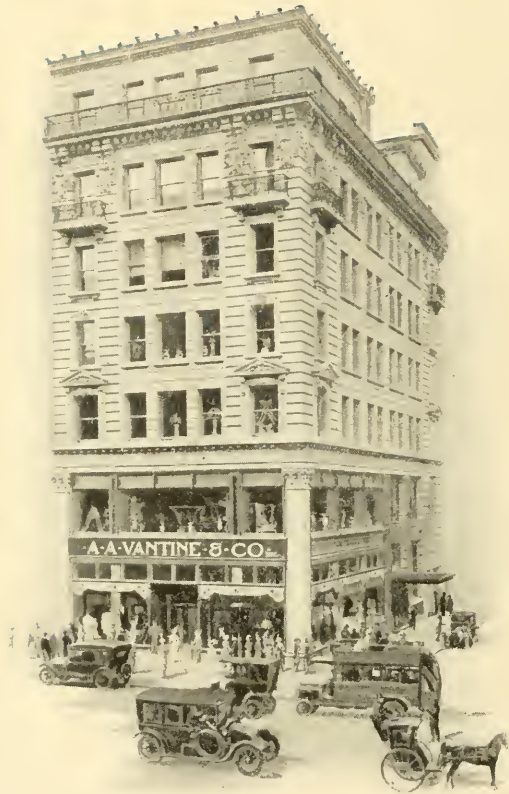
### Basket No. 3

Contains crystallized ginger, pineapple, oranges, sugared dates, crystallized orange and lemon slices, lychee nuts, stuffed cherries, midzuame, cream mints, stuffed figs, and assorted chocolates - - - - - Price \$5.00

Other baskets containing larger assortments of Oriental delicacies up to \$25.00.

(We deliver, free, all baskets directed to any steamship pier or railroad depot in New York or Boston. Orders for baskets to be sent out of these cities should include postage or expressage. Any balance remaining will be promptly refunded).





## An Invitation

ON your next visit to New York City, we shall be glad to welcome you to this veritable Mecca of objects of art and utility, centrally located at Fifth Avenue and Thirty-ninth Street, and easily accessible from all hotels and depots.

Vantine's, the most interesting store in the world—is a wondrous ever-changing exposition of antique and modern works of art from each nook and corner of Japan, China, Turkey, Persia, India and the Holy Land, rivalling in every way many of the greatest show places of the metropolis.

·A·A·VANTINE·S·CO·Inc·

FIFTH AVENUE & THIRTY-NINTH STREET  
NEW YORK