

Historic, archived document

Do not assume content reflects current scientific knowledge, policies, or practices.

62.39

I
8
2
2

BRECK'S

I
9
2
3

AUTUMN CATALOGUE 1923



HOLLAND BULBS

POT-GROWN STRAWBERRY PLANTS

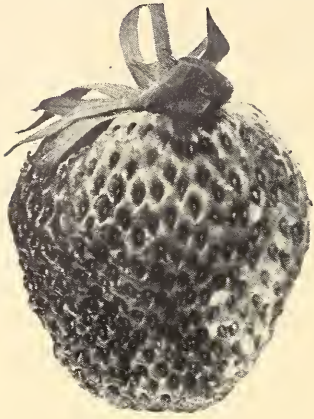
SUMMER FLOWERING PLANTS · SHRUBS FOR AUTUMN PLANTING

HARDY LILIES · FLOWER AND GRASS SEEDS

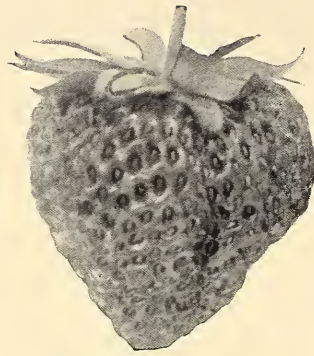
FERTILIZERS AND GARDEN SUPPLIES

Everything for Farm, Garden & Lawn

POT-GROWN STRAWBERRY PLANTS



Roosevelt



Brandywine



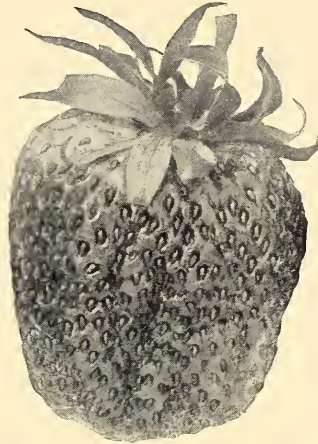
Commonwealth



Senator Dunlap



Marshall



Glen Mary



Progressive Everbearing

FOR PLANTING IN AUGUST AND SEPTEMBER

★ Denotes varieties which we can especially recommend.

Prices: \$1.00 per doz.; \$6.00 per 100; \$50.00 per 1,000

Varieties in the following list are **perfect flowering** and may be planted without a mixture of other varieties for fertilizing purposes.

★ **Arabine.** Extra early. A recent introduction. Extra large, brightest colored fruit, far superior to the older varieties and almost rust proof.

Brandywine. Midseason. A large heart-shaped berry, perfect in form, bright red in color, firm, and of rich spicy flavor. A great cropper, and succeeds especially well on heavy soil.

★ **Commonwealth.** Late. This is one of the latest of all Strawberries, and bears large, conical, deep, crimson fruit, sweet, and of the best quality. While the berry is not extra large, it is very productive, and of deep rich color, firm and good. We consider it one of the best late varieties.

Early Ozark. Extra early. One of the most productive of the early varieties. Produces large, dark, red berries of rather acid flavor, but very delicious. The plants are of vigorous growth, with healthy dark green foliage.

Excelsior. Early. One of the standard early varieties. Fruit is of round conical form, dark red color, and of mildly acid flavor.

★ **Glen Mary.** Late. Exceptionally valuable in New England, being of vigorous growth, productive of large, good quality fruit. Many growers find this the best money making variety they have, largely on account of its great productiveness.

★ **Howard XVII.** Midseason. A very productive midseason berry about the size and style of **Marshall**.

★ **Marshall.** Midseason. The fruit of this remarkable sort is enormous in size, a glossy dark crimson color, and of delicious flavor. It is a vigorous grower, and requires good soil and high cultivation. Its fruit brings the highest price of any berry in the Boston market. The demand for this sort exceeds that of any other in eastern Massachusetts.

McAlpin. Midseason. The berries are a beautiful scarlet color, very large and fine flavor. One of the best berries in cultivation.

New York. One of the most dependable sorts. The berries are large, of conical form, dark red, fine texture and sweet flavor.

Nick Ohmer. Late. Produces dark glossy red, round berries of superior flavor. Excellent for forcing.

★ **Roosevelt.** Midseason. A vigorous midseason variety, larger berries than **Marshall**; excellent flavor. Quality and color of a superior sort.

Senator Dunlap. Early midseason. A medium early, vigorous growing, highly productive variety, producing dark red berries of medium size. The flesh is red all through, and exceedingly juicy. It yields large crops of fruit which keeps for several days on the plants after the berries are ripe enough to pick. It comes the nearest to being a sure cropper of any variety grown.

★ **William Belt.** Late. Of large size and good quality. A continuous cropper. Deep red, following **Marshall**. The best of the late season varieties.

FALL OR EVERBEARING STRAWBERRIES

Prices: \$1.25 per doz.; \$8.00 per 100

★ **Progressive.** This variety makes a vigorous growth, and produces immense quantities of berries. Blossoms should be kept picked off until about the middle of July. If this is done, a heavy crop is assured from about the first of August until heavy frost. The berries are of medium size and excellent quality.

Superb. The berries of this excellent variety are a little later than those of **Progressive**. The plants are about equal in vigor of growth, but do not produce so many berries per plant as **Progressive**. The quality, however, is excellent.

BRECK'S AUTUMN CATALOGUE *for* 1923

OUR ONE HUNDRED AND SECOND YEAR

What is so rare as a day in June?

BRECK'S, like the rest of the world, admits there is nothing quite like a day in June. But what about days in April and May, with early-flowering Dutch Bulbs in bloom along the south side of the house, Crocuses a riot of color in the grass, and Darwin Tulips budding in the hardy border?

IN the following pages we offer the very choicest stock of Imported Bulbs of Tulips, Narcissi, and other spring-flowering species, and let it be said that no other flowers in the garden require so little attention and give so great a return from the efforts expended. Then, too, there are the Lily Bulbs and Flower Seeds especially adapted to Greenhouse and indoor culture; Shrubs and Plants for Autumn planting, and the accessories for successful indoor and outdoor gardening such as bulb pans, specially prepared potting soil, fertilizers, insecticides, and other miscellaneous gardening necessities.

FEW people realize the possibilities of Tulips, Hyacinths, and Narcissi for indoor blooming. Paper Whites in gravel or moss are becoming more generally appreciated and are now grown extensively in homes everywhere, but the realization is not general that perfect blooms of the others can be had in the house from mid-January until Easter with but little effort. Bulbs potted at the time that outdoor Autumn planting is in full swing will, if the pots are buried in moist sand in a cool dark corner of the cellar, make root growth exactly like those planted in the garden, and while bitter Winter holds the garden in icy bonds, the lengthening days of January, February, and March will be cheered on by a succession of bloom as the bulb-pans solid with roots are brought in succession from the moist sand of the dark corner of the cellar into the warm sunlight of east, south, and west windows.

LAST year conditions of "Quarantine Act 37" prevented our importing bulbs of Chionodoxa, Eranthis, Fritillaria, Ixia, Muscari, Scilla, and Snowdrops, but this year importations will be allowed in order that domestic stocks may be built up.

EACH year we have customers who delay securing their requirements until our stock is picked over, and the time for Fall planting has gone by. October and November are the proper months for planting these bulbs either for outdoor or indoor planting and they should be secured early in order to insure the best selection.

We issue gratis the following catalogues covering our various lines of merchandise. Send for

- Catalogue C** for concise catalogue covering all our lines in compact, convenient form.
- Catalogue S** for complete list of Seeds (Vegetable, Flower, Bird, and Grass) Fertilizers and Insecticides.
- Catalogue H** for complete list of Agricultural and Garden Implements, Tools, and Woodenware.
- Catalogue N** for complete list of Nursery Stock—Trees, Shrubs, and Plants.
- Catalogue P** for complete list of Poultry Supplies.
- Catalogue G** for complete list of everything we handle, containing all the above catalogues.

All prices subject to change without notice and all quotations subject to stock on hand unsold.

NOTICE: We give no warranty express or implied as to description, quality, productiveness, or any other matter of any seeds, bulbs, nursery stock, or plants we sell, and will not be in any way responsible for the crop. If the purchaser does not accept such goods on these terms he must return them at once and all payments therefor will be refunded. *Joseph Breck & Sons, Corporation.*

QUANTITY in BRECK'S Bulbs is a prerequisite. Our prices are as low as BRECK'S quality permits, and our selection represents the very best varieties. You can get inferior bulbs at slightly lower prices. You cannot get better bulbs at any price.

DURING the months of September, October, and November, the planting of many Shrubs, Trees, and Hardy Plants can be done to advantage. With labor conditions as they are, the Spring gardening rush is a serious problem. The results that can be attained by Fall planting are unknown to many. Loss from winter-killing of Fall planted stock is no greater than the loss which is frequently sustained by *delayed* Spring planting.

WE are at all times prepared to give advice regarding the selection and planting of the Seeds, Bulbs, Plants, Shrubs, and Trees which we offer for sale. We consider it a privilege to be consulted and it is our constant endeavor to render a service that is on a parity with the Quality of our merchandise.

FOR the greater convenience of those who may not always find it easy to come to our Boston Store we have arranged with many local dealers through New England to furnish all the seeds and other agricultural supplies which have been sold by BRECK'S for so many years. You can find these at "A Breck's Store"—you probably have seen this orange and black sign in the shop windows in your locality:

*A **BRECK'S** Store*

They will carry in stock the most popular varieties. As you can realize it will be impossible for them to stock *everything* we handle, but anything you want they will get for you if you place the order through them.

IF any of your friends would like to have our Catalogue, we shall gladly send it to them free of charge if you will send us their names and addresses.

JOSEPH BRECK & SONS

51 NORTH MARKET STREET • BOSTON

OFFICERS AND DIRECTORS

LUTHER A. BRECK, *President*

JOSEPH F. BRECK, *Secretary-Treasurer*

JOHN BENBOW, *Vice-President and Asst. Treasurer*

RUSSELL O. GARDNER, *Manager Seed Department*

P. J. VANBAARDA, *Nursery Manager*

GEORGE H. BURHART, *Wholesale Sales Manager*

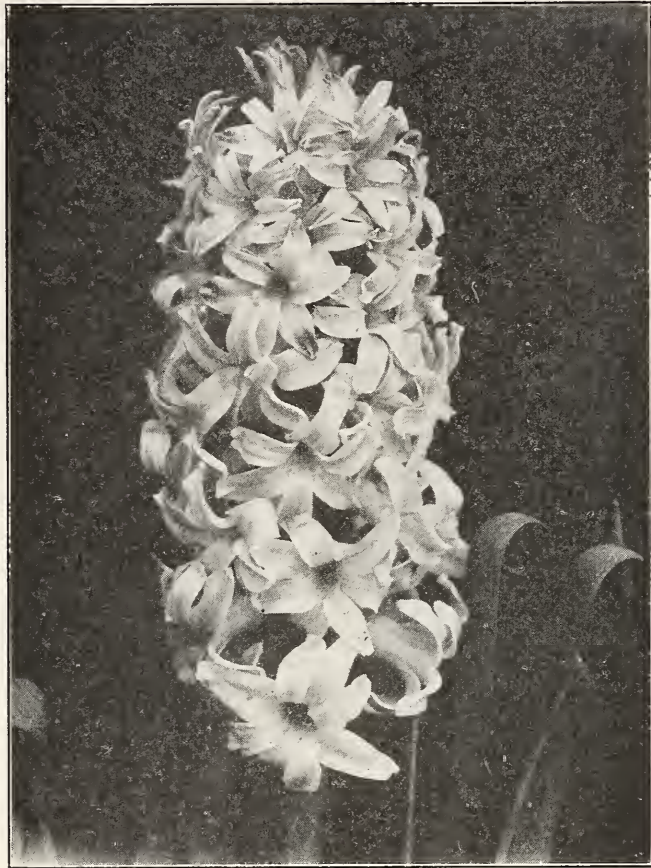
RALPH LOWELL

HENRY H. PIERCE

HOWARD G. PHILBROOK

HERBERT C. SNEATH

BRECK'S HYACINTHS



King of the Yellows

HYACINTHS are among the most popular, beautiful, and fragrant of Holland bulbs. They show almost every imaginable shade of color, and are suitable alike for house or garden culture.

CULTURAL DIRECTIONS

Pot Culture.—Plantings may be made at any time from September to December, though October is the best time. A light, rich soil enriched with Breck's Poultry Manure, sand, and leaf mould is most suitable; use a five-inch pot and have the top of the bulb just below the surface of the soil. After setting the bulb, thoroughly firm the soil and give it a good watering. The pots should then be set away in a cool cellar or out-house and covered over with coal ashes or some litter. When well rooted, which will be in about twelve weeks, they may then be brought as wanted for a succession of flowers into a moderately warm, light room and forced. To keep the foliage dwarf and obtain fine large flower spikes, Hyacinths, when being forced, should have plenty of manure, water and fresh air and should be kept near the glass.

Culture in Glasses.—When it is desired to grow Hyacinths in water, they should be placed so that the base of the bulb merely touches the water. The glasses should then be set in a cool, dark closet or in the cellar, until nearly filled with roots, when they may be brought into the light. Change the water frequently. Give as much fresh air as possible without letting the plants stand in a draught. It is of importance in growing Hyacinths in the house that the atmosphere in which the plants are growing be kept moist, and as nearly as possible at a temperature of from 65 to 70 degrees. *For Hyacinth Glasses see page 31.*

Outdoor Culture.—The bulbs may be planted in beds any time after the beginning of October and before the Winter frosts set in. Any good, well-drained garden soil will answer. Set the bulbs from four to five inches below the surface, and about six inches apart; after the ground becomes frozen, give them a good covering of stable litter.

BRECK'S GIANT HYACINTHS or MOTHER BULBS

SPECIALLY SELECTED FOR HOUSE CULTURE

Price: 30 cts. each; \$3.00 doz.; \$20.00 per 100

Make your own selection from the following:

SINGLE RED AND PINK

Gen. de Wet, Gertrude, Lady Derby, La Victoire, Marconi, Queen of the Pinks, Salmon Queen.

SINGLE WHITE

Arentine Arendsen, British Queen, La Grandesse, L'Innocence, Mme. Van Der Hoop.

SINGLE YELLOW

City of Haarlem, Yellow Hammer.

SINGLE BLUE

Bismarek, Grand Lilas, Grand Maitre, King of the Blues, Queen of the Blues, Schotel.

SINGLE HYACINTHS First Size, Named Varieties

SINGLE RED AND PINK

✱ Denotes Varieties which we can especially recommend

Price: 20 cts. each; \$2.25 doz.; \$16.00 per 100

Six bulbs at dozen rate, twenty-five at hundred rate.

Amy or Fireball. Carmine crimson; large truss, sweet scented.

✱ Garibaldi. Brilliant carmine, large spike, forces easily and early.

Gen. de Wet. Light rose, a sport of Grand Maitre.

✱ Gertrude. Very bright pink; large and compact spike.

✱ Gigantea. Blush pink; large spike with long bells.

✱ Marconi. Bright pink, broad spike, beautiful flower, highly recommended for forcing and bedding; late.

Lady Derby. Bright rose; extra fine.

La Victoire. Brilliant scarlet, red stripe.

Moreno. Deep pink; large bells; early.

✱ Norma. Delicate waxy rose; a general favorite.

Orange Beauty. Very distinct reddish orange. Produces a small bulb but a very beautiful variety for pot culture.

Pink Perfection. Fine delicate pink, shaded lavender.

Queen of the Pinks. Rosy pink.

Robert Steiger. Deep crimson; large and fine.

✱ Roi des Belges. Dark red; early.

Rosea Maxima. Delicate pink, large spike; late.

✱ Salmon Queen. Light salmon pink, broad and tall spike, very good for forcing and bedding.

SINGLE PURE WHITE AND WHITE TINTED

Price: 20 cts. each; \$2.25 per doz.; \$16.00 per 100

✱ Arentine Arendsen. Early, pure white with fine open petals.

British Queen. Pure white; large spike.

Grandeur à Merveille. Blush white, large; a favorite.

✱ La Franchise. Waxy white, large bells and truss.

✱ La Grandesse. Pure white; large bells and truss; a favorite.

✱ L'Innocence. Pure white, very large; early.

Madame Van der Hoop. Waxy white; large and fine.

Queen Emma. Almost pure white, big truss.

SINGLE YELLOW

Price: 20 cts. each; \$2.25 per doz.; \$16.00 per 100

✱ City of Haarlem. Pure yellow; large truss.

Ida. Pure yellow; small bulb, but large spike.

✱ King of the Yellows. Deep golden yellow; extra fine truss.

Primrose Perfection. Primrose yellow, fine bells.

✱ Yellow Hammer. Pure yellow; large truss.



SINGLE BLUE, PURPLE, AND VIOLET

Price: 20 cts. each; \$2.25 per doz.; \$16.00 per 100

- Admiral Courbet. Very early, azure blue.
- ★Bismarck. Bright light porcelain blue, large well-formed spike. Forces early and easily. One of the best early light blue Hyacinths in cultivation.
- Captain Boynton. Porcelain blue, darker blue; large truss; early.
- ★Czar Peter. Light porcelain blue; splendid spike; early.
- Duke of Westminster. Purplish blue, white centre.
- Grand Lilas. Porcelain blue; large spike and bells.
- ★Grand Maitre. Porcelain blue shaded with violet; magnificent.
- Ivanhoe. Deep purple, light centre.
- King Alfred. Large bells; fine lilac-blue, shaded plum-purple.
- ★King of the Blues. Deep indigo blue; superb spike.
- Lord Derby. Azure blue; large bells and truss.
- ★Marie. Dark blue; grand spike.
- Menelik. Purplish black; very distinct.
- ★Queen of the Blues. Light blue; immense truss.
- ★Schotel. Light porcelain blue, large finely formed spike. Forces early and easily.

DOUBLE HYACINTHS

First Size Exhibition

Price: 20 cts. each; \$2.25 per doz.; \$16.00 per 100

DOUBLE RED, ROSE, AND PINK

The varieties marked with star ★ are the most suitable double sorts for early forcing.

- Bouquet Royal. Rose; carmine centre.
- Noble Par Merite. Deep rose; large bell.
- ★President Roosevelt. Deep rose; fine truss.

DOUBLE PURE WHITE AND WHITE TINTED

- Isabella. Blush white; large bells and spikes.
- ★Princess Alice. Pure snowy white.

DOUBLE BLUE

- Bloksberg. Pale porcelain blue.
- ★Garrick. Bright blue.
- General Kehler. Bright blue, extra.

DOUBLE YELLOW

- Bouquet d'Orange. Reddish orange.
- ★Goethe. Pale sulphur yellow.
- Ophir d'Or. Pure yellow, reddish centre.
- ★Sunflower. Yellow, salmon tinted.

CHOICE UNNAMED HYACINTHS

For Bedding and Forcing

Though without names, these are sound flowering bulbs of desirable varieties that attain about an equal height and bloom at the same time. They flower satisfactorily in either pots or beds and should not be confounded with the cheap mixtures frequently offered.

Red and Rose	Dark Blue	} We will furnish the colors listed in either single or double flowered varieties at \$1.00 per doz. \$7.50 per 100. \$58.00 per 1000.
Dark Red	Light Yellow	
Pure White	Dark Yellow	
Tinted White	All Colors Mixed	
Light Blue		

EARLY FRENCH-ROMAN HYACINTHS

These early flowering and easily forced bulbs are general favorites. Successive plantings can be made and a continuance of bloom obtained from November to May. The flowers of these Hyacinths are smaller than the Dutch type, but each bulb produces from two to three spikes of flowers. (For indoor planting only.)

	Doz.	100
Early White, Large Bulbs	\$1.75	\$12.00
Early White, Mammoth Bulbs	2.00	15.00
Early Blue	1.50	10.00
Early Rose	1.50	10.00
White Italian	1.50	10.00
Pink Italian	1.50	10.00



Early French-Roman Hyacinth

★Denotes varieties which we can especially recommend.

SECOND SIZE HYACINTHS

Price: \$1.50 per doz.; \$10.00 per 100; \$90.00 per 1000

For out-door planting in beds and borders, they are preferable to their larger brothers; the flower spikes not being quite so heavy, endure much better the occasional rough winds during spring-time.

- ★**Gertrude.** Rosy pink, compact truss, equally good for bedding and forcing.
- ★**Gigantea.** Blush pink.
- ★**Grandeur à Merveille.** Rosy white.
- ★**Grand Lilac.** Light blue shaded lilac.
- ★**Grand Maître.** Deep porcelain blue, beautiful spike; equally good for bedding and forcing.
- ★**King of the Blues.** Fine deep purplish blue, the best deep blue for all purposes.
- ★**La Grandesse.** Large bells, very fine pure white, excellent for forcing.
- ★**L'Innocence.** Pure white extra, forces well.
- ★**Moreno.** Deep pink, very fine large bells, forces early.
- ★**Queen of the Blues.** Pale blue, large spike, very fine.
- ★**Roi des Belges.** Deep scarlet extra.



MINIATURE HYACINTHS or DUTCH-ROMANS

Price: 75 cts. per doz.; \$5.00 per 100; \$46.00 per 1000

It may be said that the Miniature Hyacinths are not appreciated by the public, probably owing to the rather deceiving name. Yet in the entire group of Hyacinths, there is hardly anything more fascinating than a well-grown pan of Miniatures. The spikes are slender, yet well provided with flower bells; the symmetry of the individual plants is indeed remarkable.

- ★**Gertrude.** Rosy pink, forces well.
- ★**Grande Blanche.** Blush white.
- ★**Grand Maître.** Deep porcelain blue.
- ★**L'Innocence.** Pure white.
- ★**Perle Brillant.** Pale blue, large bells, splendid forcer.
- ★**Roi des Belges.** Fine deep crimson.
- ★**Yellow Hammer.** Pure yellow.

BRECK'S HYACINTH GLASSES

Either Tall or Tye Shape. See page 31

AMBER, BLUE, GREEN, CRYSTAL

Each, 35 cents; Dozen, \$3.00



FREESIAS

Plant in light soil from August to October. Water well at first, then rather scantily, until the plants are well started. When growth is vigorous, water freely and set in a sunny place in greenhouse or living-room. (For indoor planting only.)

PURITY. This is a large pure white Freesia; stems grow twenty to thirty inches high.

Jumbo. 75 cts. per doz.; \$5.00 per 100; \$45.00 per 1000.

Mammoth. Doz. 50 cts.; \$3.50 per 100; \$30.00 per 1000.

Extra Large. 40 cts. per doz.; \$2.75 per 100; \$25.00 per 1000.

★**FISCHERII.** A splendid new variety which we believe will, when better known, supersede Purity on account of the size of bloom of finest white. Price: \$1.25 per doz.; \$8.50 per 100; \$75.00 per 1000.

NEW COLORED FREESIAS

The following named varieties are most beautiful. They possess a peculiar grace of form and their fragrance is quite delightful. This new strain is the result of many years of careful work and selection. (For indoor planting only.)

Aurora. A large-flowering yellow suffused with orange. Each 15 cts.; per doz. \$1.25; per 100 \$9.00.

★**California.** Large flowers of bright golden-yellow, extra fine strong growth and long stems; one of the very finest yellow varieties. Each 15 cts.; per doz. \$1.25; per 100 \$9.00.

Carmencita. Medium sized flower of a beautiful light orange-salmon hue with buff shading on the lower petals. Long wiry stems. Each 15 cts.; per doz. \$1.25; per 100 \$9.00.

★**Carrie Budau.** Lavender pink, a great improvement over Gen. Pershing—larger flowers and heavier stems; an enormous grower and producer. Each 15 cts.; per doz. \$1.25; per 100 \$9.00.

General Pershing. Light bronze. Doz. 85c; per 100 \$6.00.

Ilena. Deep rosy lavender with white throat, deep orange blotch on lower petals and good stiff stems. Flowers very large and most attractive. Each 15 cts.; per doz. \$1.25; per 100 \$9.00.

★**June Michelsen.** Large flowering, deep rose pink with light blush throat, three lower petals are veined purplish crimson with a deep yellow blotch on counter petal. Good stiff stem and strong constitution. A variety of special merit. Each 15 cts.; per doz. \$1.25; per 100 \$9.00.

Olivette. Bright carmine red with light yellow throat, lower petals having a deep yellow blotch with crimson veins. Very profuse bloomer. Each 15 cts.; per doz. \$1.25; per 100 \$9.00.

★**Splendens.** Delicate blue. Doz. 65c.; per 100 \$5.00.

Viola. Light blue. Doz. 65c.; per 100 \$5.00.

Yellow. Good clear shade of yellow. Doz. 65c.; per 100 \$5.00.

RAINBOW MIXTURE. Choice selection of all colors. Doz. 60c.; per 100 \$4.00.



Border of Darwin Tulips

DARWIN TULIPS

✱ Denotes varieties which we can especially recommend

We strongly recommend this class of Tulips for garden decoration in beds, as well as in groups in the herbaceous border and amongst shrubs. Grown for cut-flowers, they will prove very valuable at a time when flowering plants are scarce. They flower during the middle part of May, a period when the Spring flowers are over and Summer flowers such as Roses have not yet come in. The blooms last in condition a very long time.

By forcing in pots they may be had in bloom in February or even earlier. The list of varieties we offer below has been carefully selected and includes all the exquisite and new varieties.

✱ Afterglow. Soft apricot orange-tinged pink, with light orange edge.	Doz. 100	\$3.50 25.00
Ant. Roozen. Vivid rose-pink, with white base marked blue; handsome and beautiful. Height, 23 inches.85	6.00
Ariadne. Crimson scarlet, violet centre85	6.00
✱ Bartigon. Carmine red	1.00	7.00
Baronne de la Tonnaye. Bright rose margined blush rose. A beautiful long-shaped flower. Good forcer. Height, 20 inches60	4.00
Bleu Aimable. Bright violet-purple, shaded steel-blue, inside dark violet-purple with a blue base, very good forcer	1.25	9.00

Centenaire. Rich violet rose, with large blue centre. Immense flower of perfect shape; fine for forcing	Doz. 100	\$1.00 \$8.00
✱ City of Haarlem. The largest of the scarlet Darwin Tulips. Brilliant scarlet red with pure white center	3.50	25.00
✱ Clara Butt. Clear self-colored salmon rosy pink. The finest Darwin Tulip of its class; an exquisite flower. Height, 21 inches.50	3.75
Dream. Beautiful, soft uniform lilac; large flower. Height, 24 inches65	4.50
Edmee. Deep cherry rose, silvery pink edges60	4.00
Europe. Glowing salmon-scarlet, shaded rose; beautiful flower. Height, 22 inches75	5.00
Euterpe. Brilliant clear lilac, very beautiful, good forcer65	4.50
✱ Farncombe Sanders. Fiery rose-scarlet, inside vivid cerise-scarlet with white centre marked blue; large broad petalled flower of perfect shape. One of the finest sorts of all the reds and salmon-colored varieties. Height, 25 inches75	5.50
Feu Brilliant. Brilliant clear scarlet	1.00	8.00
Flambeau. Scarlet with blue base75	5.50
Giant. Dark purplish violet, large and handsome, good forcer	1.75	12.00



Darwin Tulips

DARWIN TULIPS—Continued

★ Glow. Dazzling vermilion-scarlet, white base with blue markings. A very beautiful Tulip, like a large poppy. Height, 23 inches	Doz. 100	\$0.85	\$6.00
Gretchen. Silvery pale rose, flushed white; inside soft pink with white centre marked blue. Height, 24 inches50	3.50	
Greuze. Purple violet, beautiful large flowers.75	5.00	
Gryphus. Brilliant dark violet-purple, centre blue white, very large flower on tall stem, exceedingly handsome.	20 cts. each;	1.50	10.00
Gustave Doree. Bright cerise-pink, edged silvery rose with white centre. 25 inches75	5.00	
Je Maintiendrai (Sentinel). Brilliant violet-purple.75	5.00	
King Harold. Deep purple-red with white base; a beautiful variety for the garden. Height, 24 inches.75	5.00	
★ La Candeur (White Queen). Lovely soft white, slightly tinged blush, anthers black75	5.00	
La Tristesse. Dull slaty blue with a white base. A very distinct Darwin75	5.00	
★ La Tulipe Noire. Large black flower with velvety sheen75	5.50	
★ Lenotre. Beautiful clear pink, highly recommended for early forcing, strong stem. This variety may be forced into flower ahead of any other pink Darwin Tulip	15 cts. each;	1.50	10.00
Loveliness. Soft carmine-rose. A lovely Tulip. Height, 21 inches60	4.00	
Maiden's Blush. Beautiful soft rosy pink75	5.00	
Marconi. Large violet flower with yellow centre. Very distinct75	5.50	
★ Massachusetts. Vivid pink with white centre; large flowers. Height, 26 inches75	5.00	
★ Massenet (The Dove). Soft apple-blossom flushed white, centre white, good sized flower of very delicate beauty.	15 cts. each;	1.50	10.50
Matchless. Beautiful rich violet rose	1.00	7.00	
Mauve Clair. Lilac mauve75	5.00	
Melicette. Lilac, extra.	10 cts. each;	1.00	7.00
Mme. Krelage. Bright lilac-rose, margins pale silvery rose, inside soft rose-pink. 28 inches75	5.50	

Minister Tak. Glowing rosy-scarlet with blue base. Height, 26 inches	Doz. 100	\$0.75	\$5.00
Mrs. Cleveland. Glowing dark cerise-rose, centre dark violet, shaded bronze. 30 inches.75	5.00	
Mrs. Potter Palmer. Glowing purple75	5.00	
★ Nauticus. Glowing dark cerise, rose centre, dark violet, shaded bronze65	4.50	
Painted Lady. Creamy white, faintly tinged soft heliotrope when opening; a very beautiful flower resembling a Water Lily. 27 inches65	4.50	
Petrus Hondius. Bright carmine rose75	5.50	
★ Pride of Haarlem. Bright rose suffused with purple. An enormous flower of superb form. A stately flower for borders and among shrubs; for groups this variety is unsurpassed. 28 inches60	4.00	
★ Princess Elizabeth (Mme. Julie Vinot). Vivid rosy pink, very beautiful	1.00	8.00	
Princess Juliana. Salmon, orange scarlet, a most remarkable and beautiful flower75	5.00	
Psyche. Rich rosy pink, silvery rose inside with a pale blue base75	5.00	
★ Reverend H. Ewbank. Vivid heliotrope-lilac, lightly bordered; magnificent flower, extremely beautiful outside.65	4.50	
Ronald Gunn. Clear violet with white center, extra large flower.75	5.50	
Sieraad Van Flora. Bright red with a blue base; magnificent flower of a very distinct color. A very fine forcing variety. 24 inches75	5.00	
★ Sir Harry Veitch. Rich blood red, blue base.75	5.00	
Spring Beauty. Clear scarlet with blue base. A very fine good sized flower90	6.50	
Suzon. Soft buff-rose, shading to blush at margin of petals, inside soft flesh-pink with white centre, very large erect flower of a delightful shade; good forcer75	5.00	
★ Venus. Pure silvery rose. Good for forcing.	3.00	22.00	
Whistler. Crimson scarlet, blue base, edged white75	5.50	
★ William Copeland. Bright violet, fine for indoor forcing. Height, 24 inches75	5.50	
William Pitt. Very dark scarlet with purple shade on outer petals, large flower, distinct color, great beauty. Fine for forcing	1.00	8.00	
Zulu. Rich, velvety purple-black. Large egg-shaped flower. Height, 27 inches75	5.00	
Finest Mixed. A good selection of strong colors, Doz. 50c; per 100 \$3.50; per 1000 \$30.00.			

VARIETIES RECOMMENDED FOR FORCING

The following varieties are suitable for forcing and can be had in flower from the end of January until April. They want a little more room in the boxes than ordinary Tulips.

	Approximate month of Flowering
Baronne de la Tonnaye	March
Bartigon	February
Farnecombe Sanders	March
Glow	March
Gretchen	March
King Harold	March
Loveliness	March
Pride of Haarlem	February
Princess Elizabeth	March
Rev. Ewbank	February
Sieraad Van Flora	February
Venus	February
William Copeland the best of all for forcing	end of January
William Pitt	February

BRECK'S SELECTED MIXTURE

	Doz.	100	1000
From named varieties	\$.85	\$6.00	\$55.00

★COLLECTIONS OF NAMED DARWINS

- No. 1.—100 Darwins, ten separate and named varieties, our selection for \$7.00 postpaid.
- No. 2.—50 Darwins, five separate and named varieties, our selection for \$4.00 postpaid.

★ Denotes varieties which we can especially recommend

BREEDER TULIPS

Breeders are the unbroken form of the old Florist Tulips. Most of the varieties are purple, maroon, or terra-cotta colored. They are of enormous size and vigorous growth. These Tulips are very valuable for the garden, producing by their refined colors a most artistic effect. They should be treated like Darwin Tulips, but will not stand severe forcing.

★ Bronze Queen. Soft golden yellow bronze, large flower	Each	Doz.	100
	\$0.08	\$0.75	\$5.00
★ Cardinal Manning. (Syn. Kingscourt). Dull wine red, flushed rosy brown08	.75	5.50
★ Coridion. Clear yellow, very distinct15	1.50	10.00
★ Don Pedro. A beautiful shade of coffee brown, shaded maroon, inside rich mahogany, good forcer10	1.00	7.50
★ Dreadnought. Dark glossy royal purple with white base marked blue. A giant flower and a good forcer20	2.00	14.00
★ General Ney. Old Gold, with olive base08	.85	6.00
★ Golden Bronze. Beautiful bronzy yellow, good forcer10	.90	6.50
★ Le Mogol. Soft lilac08	.85	6.00
★ Grand Maître. Purple violet08	.85	6.00
★ D'Œuf (Sunrise). Golden outside, petals shaded apricot08	.75	5.00
★ Louis XIV. Dark purple flushed bronze, broad margin of golden brown35	4.00	27.50
★ Prince of Orange. (Orange Beauty, Sunset), Orange-scarlet, edged light yellow08	.85	6.00
★ Queen Alexandra. Soft sulphur-yellow with black anthers08	.75	5.00
★ Lucifer. Bright terra-cotta orange20	1.75	12.00
★ Madame Lethierry. A very handsome shade of salmon08	.85	6.00
★ Old Gold (Yellow Perfection). Light bronze yellow, edged golden, very beautiful. Height, 22 inches08	.75	5.50
★ Panorama. Reddish mahogany, good for forcing10	1.00	7.50
★ Plutarchus. Bronze shaded at base with terra cotta, very handsome10	1.00	7.50
★ Purple Perfection. Claret purple, large flower10	1.00	8.00
★ Turenne. Purplish brown, broad margin of soft yellow. One of the largest and very early10	1.00	7.50
★ Superb Mixture of all colors		1.00	7.50

SINGLE LATE MAY FLOWERING TULIPS AND SPECIES

These usually come into flower after the middle of May and are in their greatest perfection about Memorial Day; many of these are very fragrant. For grouping in mixed borders and in front of shrubbery, as well as for planting in beds, either alone, or with the tall growing, double flowered, late blooming sorts, they are unequalled.

	Doz.	100	1000
★ Caledonia. Bright orange-scarlet	\$0.65	\$4.50	\$40.00
★ Elegans (15 inches). Crimson vermilion, yellow centre, pointed petals65	4.50	40.00
★ Elegans Alba. Beautiful large white reflexed petals, margined rosy red	1.00	8.00	70.00
★ Ellen Willmott. The finest May flowering Tulip, flowers very large, beautiful shape, soft creamy yellow color with a delicious fragrance65	4.50	40.00
★ Gesneriana Major (18 inches). Large, crimson scarlet, blue-black centre60	4.00	38.00
★ Gesneriana Lutea. Fine golden yellow60	4.00	35.00
★ Gesneriana Rosea. Rosy carmine60	4.00	35.00
★ Glare of the Garden. Dazzling scarlet; immense flowers; extra75	5.00	48.00
★ Golden Eagle. (18 inches). Yellow, narrow crimson edge60	4.00	35.00
★ Golden Spire. Enormous flower, reflexing petals of a deep golden yellow, finely edged scarlet	1.00	8.00	70.00



Inglescombe Pink

	Doz.	100	1000
★ Ida (Bouton d'Or) (16 inches). Pure deep yellow	\$0.60	\$4.00	\$38.00
★ Inglescombe Pink. Beautiful salmon-rose, one of the finest May flowering Tulips and the general favorite65	4.50	40.00
★ Inglescombe Scarlet. Brilliant scarlet, black base65	4.50	40.00
★ Inglescombe Yellow. May be called the Yellow Darwin. Large flower of a perfect form; glossy canary-yellow, very beautiful60	4.00	35.00
★ Isabella (Blushing Bride) (16 inches). Creamy white and pink, changing to bright carmine, centre rose and peacock blue60	4.00	35.00
★ Le Reve. Very large flowers of a rosy buff tone with yellow base, very handsome	1.25	9.00	80.00
★ Moonlight. Splendid canary yellow, long flower75	5.50	50.00
★ Mrs. Moon. Large yellow, extra fine75	5.50	50.00
★ Picotee (Maiden's Blush). White, margined carmine rose60	4.00	35.00
★ Primrose Beauty. Belongs to same type as Ellen Willmott; color soft primrose changing to white65	4.50	40.00
★ Retroflexa (14 inches). Clear yellow long pointed petals, elegantly curved65	4.50	40.00
★ Royal White. Pure white with yellow centre85	6.00	55.00
★ The Fawn. Large flower; light grayish-rose, changing to soft rosy white60	4.00	38.00
★ Vitellina. Pale primrose, passing off pure white, tall and handsome65	4.50	40.00
★ Single Late Tulips. Choice selected mixture50	3.00	25.00



Keizerkroon



Mon Tresor



Pink Beauty



Darwin Tulips in our Dutch Garden Bloemgaard in Lexington, Mass.

In order to assist our customers in selecting Tulips for beds, borders, etc., we give herewith a list of the most popular bedding varieties classed as **Very Early**, **Early**, and **Late**; the relative height of stem is indicated as *tall*, *medium*, and *dwarf*.

Very Early: (*Dwarf*) Scarlet Duc Van Thol, White Duc Van Thol; (*Medium*) La Reine, Mon Tresor, Prosperity, Vermillion Brilliant, Proserpine; (*Tall*) King of the Yellows.

Early: (*Dwarf*) Artus, Belle Alliance, Cottage Boy, Cottage Maid, Gold Finch, Rose Grisdelin, Yellow Prince; (*Medium*) Chrysolora, Duchesse de Parma, Dusart, Joost van Vondel, La Grandeur, President Lincoln, Queen of the Netherlands, Wouwerman; (*Tall*) Keizerkroon, Pottebakker White, Pottebakker Yellow, Princess Wilhelmina, Rising Sun, Sir Thomas Lipton, Thomas Moore, White Hawk.

Late: (*Dwarf*) Royal Standard; (*Medium*) Princess Helene, Rosamundi Huikman, Rose Luisante; (*Tall*) Couleur de Cardinal, Pink Beauty, Prince of Austria, White Swan.

SINGLE EARLY TULIPS

All Single Early Tulips are suitable for pot culture. The Duc Van Thol Tulips are the earliest, especially suitable for growing indoors. The selection we offer below is made up of the finest bulbs of the best varieties and should give the utmost satisfaction.

CULTURE IN POTS OR FLATS.—Use ordinary garden soil, set three bulbs in a five-inch pot, or a dozen bulbs in a ten- or twelve-inch flat or pan; have the top of the bulb just even with the surface of the soil; after watering thoroughly, plunge the pots in a cold-frame or set in the cellar and cover with coal ashes or sand. They may be brought into the house for forcing about the middle of December, and thereafter at intervals of two weeks, for a succession. With plenty of light, water, and air they will begin to bloom in about six weeks in the ordinary living-room.

DUC VAN THOL

Price: 60 cts. per doz.; \$4.00 per 100; \$35.00 per 1000

This is the earliest class of Tulips. If started early they may be forced into bloom before Christmas. Very sweet scented. They grow about six inches high.
Crimson, Red and Yellow, Rose, Scarlet, White, Yellow.

★ Denotes varieties which we can especially recommend.

NAMED VARIETIES

ORANGE, RED AND YELLOW

	Doz.	100	1000
Cottage Boy. Yellow, edge orange. Very distinct; a fine bedder.....	\$0.65	\$4.50	\$40.00
Duchesse de Parma. Orange-red, margined deep yellow; a fine bedder.....	.75	5.50	50.00
★ De Wet (Fireglow). Beautiful golden, flushed and stippled fiery orange scarlet, quite a distinct shade, unlike any other variety; grown under glass it is a real orange shade.....	2.25	15.00	
★ Keizerkroon. Mammoth Top Roots. This old variety becomes more popular every year. Especially for bedding. A bed of these showy flowers on their stiff stems is a glorious sight; they should be planted alone.....	.85	6.00	55.00
Prince of Austria. Fine orange-red; good for forcing and bedding.....	.75	5.00	45.00
★ Thomas Moore. Terra-cotta, shaded golden-yellow.....	.50	3.75	35.00

PINK

	Doz.	100	1000
★ Cottage Maid. Beautiful bright pink shaded white.....	\$0.75	\$5.00	\$45.00
★ Pink Beauty. A flower unsurpassed for size and beauty, deep glowing rose with white flush on outside of petals....	1.50	10.00	
Prosperity. Rose pink, splendid for forcing. A lovely tulip for cutting....	.60	4.00	36.00
★ Proserpine. Rich carmine rose. One of the best and most popular varieties for early forcing. It may be had in blossom by Christmas.....	1.00	8.00	75.00
Rose Luisante. Beautiful brilliant deep rose. Very showy in pots.....	1.00	8.00	75.00

RED AND WHITE

	Doz.	100	1000
Flamingo. White, flaked rosy red, excellent for forcing.....	\$0.85	\$6.00	\$56.00
★ Joost Van Vondel Striped. Cherry red, feathered white; beautiful large flowers.....	.60	4.00	35.00
Princess Wilhelmina. Deep rosy red, flushed white on outside petals.....	.75	5.50	50.00

DARK RED AND CRIMSON

	Doz.	100	1000
★ Cardinal's Hat. Beautiful deep red....	\$0.60	\$4.00	\$35.00
Couleur de Cardinal. Large rich velvety crimson; a very useful variety....	.85	6.00	55.00
Dusart. Dark vermilion-red; an extra good bedding variety.....	.65	4.50	40.00

PINK AND WHITE

	Doz.	100	1000
Couleur Ponceau. Cherry rose, white flushed outside.....	\$0.65	\$4.50	\$40.00
★ La Reine (Queen Victoria). White slightly tinged with rose; excellent for bedding and forcing; extra size....	.50	3.50	30.00
La Reine Maximus. White bordered rose, large flowers. The same forcing habit as La Reine.....	.60	4.50	40.00
Queen of the Netherlands. Magnificent soft rose flushed white, very showy when grown in pans.....	.75	5.00	45.00
★ Rose Grisdelin. Delicate rose flushed white; good forcer.....	.60	4.00	35.00
Rosamundi Huikman. Rose and white.....	.60	4.00	38.00

WHITE

	Doz.	100	1000
★ Joost Van Vondel (Lady Boreel). White The largest and most intense pure white early variety. Splendid both for bedding and forcing.....	\$0.65	\$4.50	\$42.00
★ Pottebakker White. Very beautiful pure white, splendid for forcing and bedding.....	.75	5.50	50.00
Princess Helene. Beautiful large pure white elongated flowers.....	.50	3.75	35.00
White Hawk (White Falcon). Large pure white globular flower. Fine for bedding and forcing.....	.75	5.50	50.00
White Swan. Pure white; egg-shaped flowers.....	.75	5.50	50.00

BRECK'S MATCHLESS MIXTURE SINGLE EARLY TULIPS

All First Size Bulbs

Our own mixture: contains all the desirable sorts; they grow about equal height and flower simultaneously

This mixture is without a rival for variety and brilliancy

Prices: 75 cts. per doz.; \$5.00 per 100; \$40.00 per 1000

SINGLE TULIPS

Selected Grower's Mixture: This embraces good quality bulbs in beautiful assortment

Prices: 40 cts. per doz.; \$2.75 per 100; \$25.00 per 1000



President Lincoln

SINGLE EARLY TULIPS—Continued

YELLOW

★ Chrysolora. Pure yellow, good for forcing and bedding	Doz.	100	1000
	\$0.50	\$3.75	\$35.00
★ Gold Finch. (Yellow Prince sported). Pure yellow, sweet scented, this variety is a valuable improvement of Yellow Prince as it is entirely without orange stripes and has all the good qualities of the old favorite65	4.50	40.00
King of the Yellows. Pure deep golden-yellow egg-shaped flowers; an excellent forcing variety60	4.00	35.00
Mon Tresor. Beautiful pure yellow; a good forcer; may be had in blossom by Christmas60	4.50	35.00
Pottebakker. Pure yellow. Very good variety65	4.50	40.00
★ Rising Sun. Large flower on tall stem, color deep golden yellow85	6.00	50.00
Yellow Prince. Bright yellow sweet-scented. One of the best varieties for forcing and bedding65	4.50	40.00

VIOLET

★ President Lincoln (Queen of the Violets). Purplish mauve, white base60	4.00	38.00
Wouwerman. Claret purple65	4.50	40.00

SCARLET

Artus. Brilliant deep scarlet; fine bedder60	4.00	35.00
Belle Alliance (Waterloo). Brilliant scarlet, large sweet-scented flower excellent for bedding and forcing75	5.00	45.00

Grace Darling. Beautiful bright bronze-scarlet. One of the most effective bedding varieties, not recommended for forcing as it loses its bright color.	\$0.65	\$4.50	\$40.00
La Grandeur. Bright scarlet, large flower75	5.50	50.00
★ Pottebakker (Verboom). Large scarlet flower65	4.50	40.00
★ Sir Thomas Lipton. (Royal Scarlet). Brilliant scarlet; a large cup-shaped flower of great brilliancy75	5.50	50.00
★ Vermillion, Brilliant. Vermillion scarlet. There is no other variety which equals it in brilliancy. We heartily recommend it for all purposes	1.00	7.00	65.00

PARROT TULIPS

This species has fringed flowers, brilliant crimson and yellow with shades of bright green; very gay and effective in mixed borders, and forming a fine succession to the early flowering varieties.

Admiral de Constantinople. Red streaked with orange	\$0.65	\$4.50	\$40.00
Coffee Color. Mottled green and yellow65	4.50	40.00
★ Feu Brilliante. Brilliant scarlet. Very attractive65	4.50	40.00
Lutea Major. Bright yellow, streaked red65	4.50	40.00
Mark Graaf. Yellow inside, scarlet and green striped outside65	4.50	40.00
★ Perfecta. Red and yellow striped65	4.50	40.00
★ Choice Mixture65	4.50	40.00

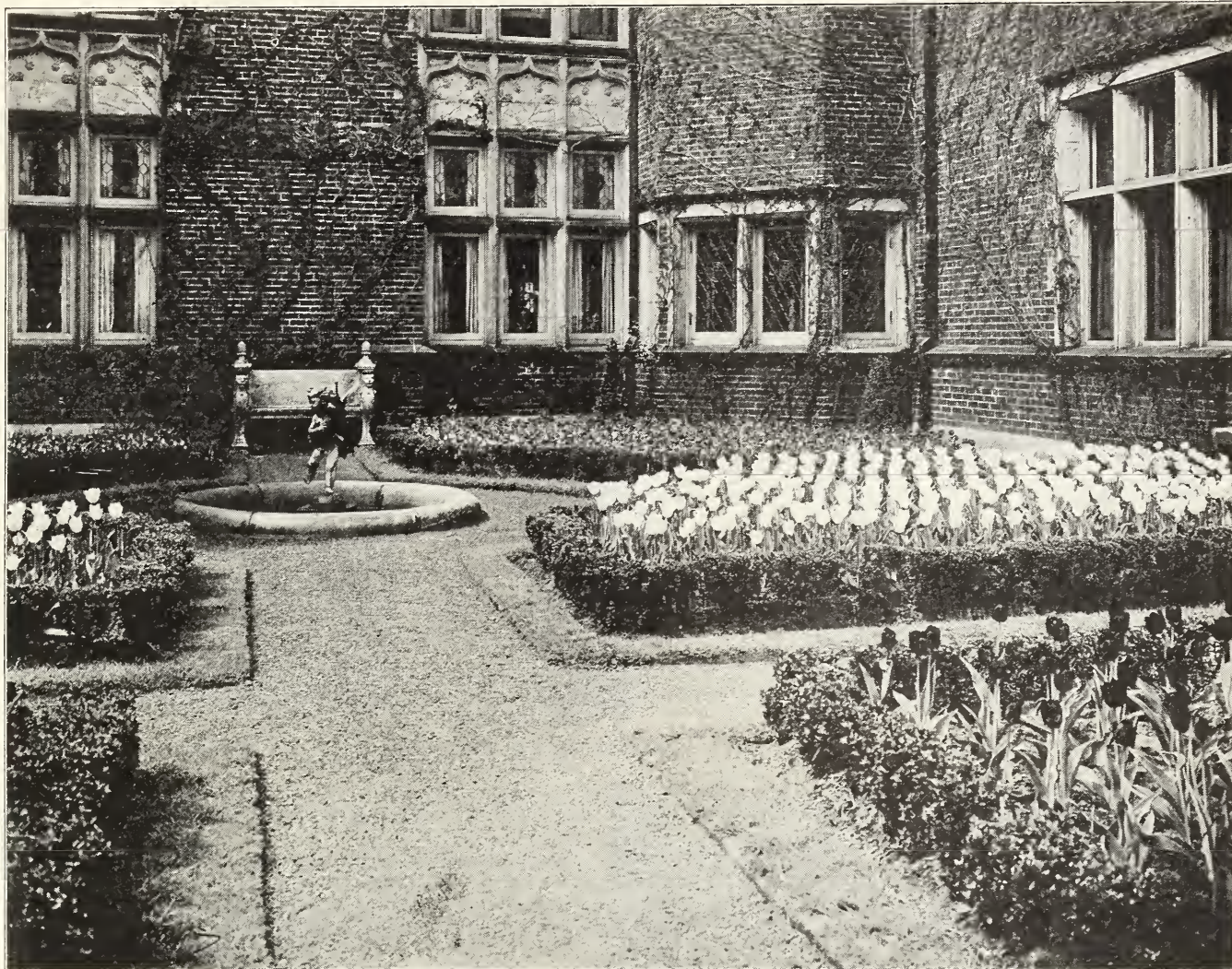
DOUBLE EARLY AND LATE TULIPS

The earlier varieties of this beautiful class of Tulips are admirably adapted for forcing. The later kinds are very effective for bedding, producing a dense mass of brilliant colors, which remain in perfection a long time. E signifies early and L signifies late varieties.

★ Bleu Celeste, L. (Blue Flag) Enormous flower, violet blue, extra	\$0.75	\$5.50	\$50.00
Boule de Neige, E. Double, large pure white75	5.50	50.00
Couronne des Roses, E. Deep rose, double75	5.50	50.00
Couronne d'Or, E. Bright yellow, shaded orange75	5.50	50.00
Golden King, E. Clear soft yellow; a magnificent double flower; excellent for pot culture	1.00	7.50	
Imperator Rubrorum, L. Bright scarlet, very double90	6.50	60.00
Lord Beaconsfield, L. Deep carmine rose75	5.00	45.00
Mr. Van Der Hoeff, E. Pure yellow, sport of Murillo, recommendable new variety	1.00	7.00	60.00
Murillo, E. Blush white, shaded with rose50	3.50	30.00
Rubra Maxima, E. Deep vermilion crimson75	5.00	45.00
Salvator Rosa, E. Beautiful deep rose. Extra early, splendid for forcing75	5.00	45.00
Schoonoord, E. Beautiful pure white75	5.50	50.00
Tea Rose, E. Pale yellow flushed salmon; very distinct60	4.00	38.00
Tournesol, E. Red and yellow75	5.50	50.00
Tournesol Yellow, E.75	5.00	45.00
Yellow Rose, L. Bright golden yellow; sweet scented75	5.00	45.00

★ **Breck's Selected Mixture.** Double Early Tulips. Doz., 50 cts.; per 100, \$3.50; per 1000 \$30.00.

★ **Breck's Superb Mixture.** Double Late Tulips. Doz. 50 cts.; per 100 \$3.50; per 1000 \$30.00



Tulip Beds on the Estate of Louis K. Liggett, Esq., Chestnut Hill, Mass.

OLD DUTCH TULIPS

The Bybloemens and Bizarre Tulips are rectified Breeder Tulips. The Bybloemens are striped and feathered rose or violet on a white ground. The Bizarres are feathered brown on a yellow ground. They flower about the same time as Darwin and Breeder Tulips. They are not quite so tall or so large.

BYBLOEMENS

	Doz.	100	1000
Choice Mixture of Roses	\$0.65	\$4.50	\$40.00
Choice Mixture All Shades65	4.50	40.00

KING TUT or Egyptian Tulips

BIZARRES

	Doz.	100	1000
Extra Mixture of True Bizarre Varieties.	\$0.65	\$4.50	\$40.00

REMBRANDT TULIPS

(BUTTERFLY TULIPS)

Price: 10 cts. each; 85 cts. per doz.; \$6.00 per 100

The Rembrandt Tulip comprises a strain of variegated Darwin Tulips. Usually delicate shades with flames or stripes of a darker shade and forming lovely combinations which appeal

to the refined taste of many people. Some varieties can be forced to the end of February, but the flowers are not quite as large as the Darwin.

- ★ **Caracalla.** Fiery scarlet and white.
- ★ **Gretchen.** Light pink feathered dark pink.
- ★ **Pierette.** Lilac on a white ground, purple feathered.
- ★ **Semele.** White with pink feathering.
- ★ **Suzanna.** Reddish brown on soft lilac flamed white.
- ★ **Victor Hugo.** White feathered brilliant carmine red.

BABY GLADIOLI

(EARLY FLOWERING VARIETIES)

Price: \$1.00 per doz.; \$7.50 per 100

These Gladioli are valuable for forcing for winter bloom. The gracefully formed flowers are excellent for cutting. (*For indoor planting only.*)

- ★ **Ackermanni.** Orange salmon flaked carmine—a pleasing and effective variety.
- ★ **Blushing Bride.** White with pink and carmine blotches—a charming combination.
- ★ **Colvillei Alba (The Bride).** Pure white, very early and fine for forcing.
- ★ **Peach Blossom.** A most beautiful shade of soft rose pink.

Autumn is the best time to plant Hardy Lilies

By the time the importations of Lilies reach this country the ground is often frozen but if the beds are prepared beforehand and covered with leaves and litter the ground will not freeze until the bulbs arrive. See list on page 18.

ANEMONE—Wind Flower.

These beautiful spring flowers are equally adapted for garden and pot culture. For outdoors, plant in clumps or masses; for pot culture, cover one inch and keep moderately cool; give but little water until growth begins.

	Doz.	100	1000
Coronaria. Single French Flowered...	\$0.60	\$4.50	\$40.00
St. B. rigid (Irish Anemone.) Semi-double, fine for cutting.....	.60	4.50	40.00

CHIONODOXA—Glory of the Snow

The most attractive and desirable of the dwarf blue hardy Spring flowers. Thrives in any kind of soil and in almost any location. The bulbs continue to bloom year after year without deterioration. Especially suitable for pot culture and forcing.

Luciliae. Sky blue with white centre, ten to fifteen flowers on a stem. Doz. 60 cts.; per 100 \$4.50; per 1000 \$40.00.

CHOICE NAMED CROCUSES

Plant during October or November, in clumps or masses, three inches deep. If planted along the border of the lawn they can be combined with Snowdrops, Scillas, Daffodils, etc. They are perfectly hardy and may remain in the ground undisturbed for years. Crocuses are easily forced. They should be planted very thickly in pots, flats or shallow boxes, filled with good light soil not too much packed down. The top of the bulb should be just below the surface. Crocuses may also be grown in glasses or in flat dishes with sand, moss, or cotton batting as a foundation. Keep the material in which they are set constantly moist and growth will soon begin.

BLUE AND PURPLE

	Doz.	100	1000
Baron von Brunow. Deep purple....	\$0.25	\$1.50	\$13.00
*Caesar. Purple, fine large flower.....	.30	2.25	20.00
David Rizzio. Dark purple.....	.25	1.50	13.00
King of the Blues. Deep blue-purple a fine forcer.....	.30	2.25	20.00
Prince Albert. Deep blue.....	.25	1.50	13.00
Purpurea Grandiflora. Dark purple; very large flower.....	.30	2.25	20.00

WHITE

Carolina Chisholm. Good for forcing	.25	1.50	13.00
*Kathleen Parlow. Extra size, orange anthers, cup pure white.....	.40	3.00	27.00
Mammoth. The largest pure white...	.25	1.50	13.00
Mont Blanc. Pure white; a good forcer.	.25	1.50	13.00
Queen Victoria. Pure white.....	.25	1.50	13.00

STRIPED

Albion. Purple with white feathers....	.25	1.50	13.00
Cloth of Silver. Silvery white, penciled with lilac.....	.40	2.50	22.00
La Majestueuse. White, striped lilac..	.25	1.50	13.00
*Pallas. White ground, striped lilac...	.35	2.50	22.00
Sir Walter Scott. White penciled lilac	.25	1.50	13.00

YELLOW

*Mammoth Golden Yellow. Extra large, producing many flowers.....	.40	3.00	27.00
Golden Yellow. First size.....	.40	2.50	22.00
Golden Yellow. Second size.....	.25	1.50	13.00
Cloth of Gold. Golden yellow, striped maroon.....	.35	2.50	22.00

MIXED SHADES

Large White.....	.20	1.25	9.00
Large Blue and Purple.....	.20	1.25	9.00
Large Striped and Variegated.....	.20	1.25	9.00
All Colors. Mixed.....	.20	1.25	9.00

CROWN IMPERIALS

Fritillaria Imperialis

Stately border plants growing about three feet high, with a crown of pendant bell shaped flowers of various colors. Plant six inches deep in good, rich soil.

	Doz.	100
Rubra Simplex. Red.....	\$3.50	\$26.00
Yellow.....	5.00	35.00
Superfine Mixed.....	3.00	22.00

ERANTHIS—Winter Aconite

One of the earliest harbingers of Spring, growing freely under trees among grass in almost any position or soil. Splendid for naturalizing.

Eranthis Hyemalis. Yellow. Doz. 50 cts.; per 100 \$3.75; per 1000 \$33.00.

FRITILLARIA MELEAGRIS

Guinea-Hen Flower

Dwarf spring-flowering bulbs with large pendant bell-shaped flowers usually striped or mottled. Quite hardy and equally desirable for house and outdoor cultivation.

Superfine Mixed. Doz. 85 cts.; per 100 \$6.50; per 1000 \$60.00.

IXIA

Beautiful easily grown bulbs that are especially suitable for house and greenhouse culture; may also be grown outdoors. They attain an average height of about eighteen inches.

Splendid Mixture containing many colors, shades and combinations. Doz. 50 cts.; per 100 \$3.75; per 1000 \$33.00.

MUSCARI—Grape Hyacinth

A group of hardy bulbs suitable for growing in pots, borders, rockeries, etc. Valuable for cutting in early Spring.

	Doz.	100	1000
Botryoides Alba. Pure White.....	\$0.60	\$4.00	\$35.00
Botryoides Cœrulea. Rich blue.....	.40	2.75	25.00
Heavenly Blue. Light blue strong growing variety with larger flower trusses than the ordinary Grape Hyacinth.....	.75	5.00	46.00

RANUNCULUS

Tender flowering bulbs. If wanted for house or greenhouse, plant in light soil and grow in a temperature of not over sixty degrees.

Giant French Mixed. Vigorous growing, large flowers. Doz. 60 cts.; per 100 \$4.50; per 1000 \$40.00.

SCILLA—Squill

Valuable for garden decoration, for cutting, and for naturalizing. They thrive in almost any situation, but prefer a rich, sandy loam. Plant the bulbs three inches deep. If they are to be forced, plant a dozen in a bulb pan and treat the same as Hyacinths.

	Doz.	100	1000
Siberica. Bright blue.....	\$1.00	\$7.00	\$64.00
Campanulata Alba. Pure White.....	.80	6.00	52.00
Campanulata Cœrulea. Large blue bells.....	.75	5.50	48.00
Campanulata Rosea. Delicate Rose....	.80	6.00	52.00

SNOWDROP

These succeed well under the same conditions as Crocuses, and are especially suitable for naturalizing. To get the most satisfactory effect, bulbs should be planted in clumps three inches deep.

	Doz.	100	1000
Single Snowdrop. Extra fine bulbs.....	\$0.60	\$4.00	\$36.50
Double Snowdrop. Extra fine bulbs....	1.00	7.00	64.00

SNOWFLAKE—Leucojum

The Snowflakes produce immense snowdrop-like flowers on stems about a foot high. They are perfectly hardy and violet scented.

Spring Snowflake (Leucojum Vernum). Large White drooping flowers produced in March. Doz. 60 cts.; per 100 \$4.50.

SPARAXIS

Brilliant and attractive flowers, mottled, striped, and splashed. They closely resemble Ixias, but are dwarfer and more compact. Eight to twelve bulbs may be planted in a six-inch bulb pan, and cover them one inch deep.

Choice Sorts Mixed. Doz. 60 cts.; per 100 \$4.50.

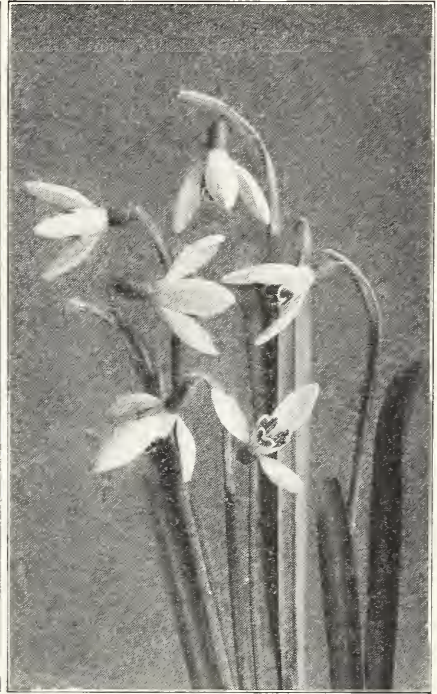
Bulbs Suitable for Naturalizing



Chionodoxa



Grape Hyacinth



Snowdrop



Fritillaria Meleagris



Anemone

NARCISSI or DAFFODILS

CULTURAL DIRECTIONS

With few exceptions the Narcissi are hardy and strong, growing under ordinary cultivation. The bunch-flowered or Polyanthus sorts, however, should not be trusted to the border.

Outdoor Culture. The Daffodil will grow in any ordinary garden soil and in almost any situation, but prefers moderately stiff, well-drained soil, in situations slightly shaded, such as the herbaceous border and the margins of flower-beds, along the outside edges of shrubberies, on woodland walks, and on the margins of lakes and streams, or for naturalizing in the grass or woodland. Planting may be done in the Fall any time before frost sets in, October being the usual month for setting out. Once planted they should not be disturbed further than dividing and resetting in August once in three or four years, when they get too crowded.

Pot Culture. It is unnecessary to say anything as to the merits of Narcissi of all kinds for this purpose, as their popularity is universal. At the head of the list stands the Tazetta, or Polyanthus Narcissus, with its large bunches of fragrant flowers.

The Paper White Grandiflora and Double Roman Tazettas are very largely used for forcing. All the varieties of the group are suitable for this purpose, and are excellent for cut flowers.

The Campernelle, or Large Jonquil (*N. odorus*), and the Single and Double Sweet-scented Jonquils are splendid—the last mentioned being exquisitely perfumed.

For culture, the hints given under Hyacinths may be followed. One very important point is to keep them cool for the first four or five weeks when they are commencing to grow. After the roots are grown and the tops well started, they may be pushed forward more quickly in heat. In cutting for sending to friends or for market, the flowers should be cut in the bud, and when placed in water they will open out beautifully.

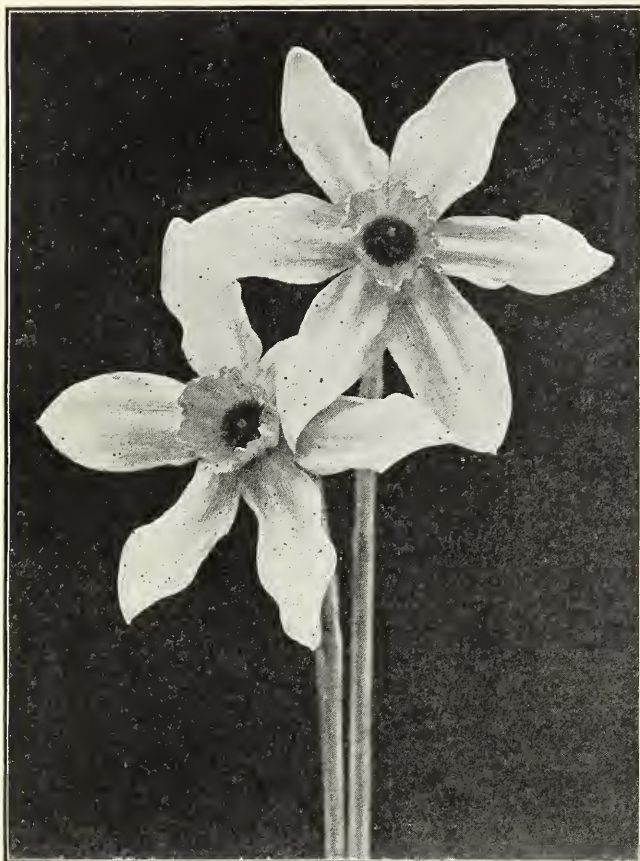


Emperor and Empress

LARGE TRUMPET NARCISSUS

- Duke of Bedford.** Pure white perianth, broad trumpet of clear yellow 75 cts. ea.; Doz. 100 1000
\$6.00 \$45.00
- ★ **Emperor.** Flowers of great size and substance; trumpet clear golden yellow, with broad, delicate, primrose perianth. **First Size** .75 5.50 50.00
Mammoth Bulbs. Double nose . . . 1.00 7.50 66.00
- ★ **Empress.** Immense golden yellow trumpet, with a broad white perianth of great substance; forces well. **First size** .75 5.50 50.00
Mammoth Bulbs. Double nose . . . 1.00 7.50 66.00
- ★ **Glory of Leiden.** One of the largest varieties in the Trumpet Narcissus, immense trumpet and perianth deep yellow. 10 cts. each 1.00 7.50 66.00
- Glory of Noordwijk.** A gigantic bicolor with a large yellow trumpet and a long creamy white perianth. 1.50 10.00 90.00

- ★ **Golden Spur.** The entire flower a rich deep yellow and very large; one of the most popular trumpet sorts, used largely by florists. We recommend the mammoth bulbs for house culture.
First Size Bulbs \$0.90 \$6.50 \$58.00
Mammoth Bulbs. Double nose . . . 1.00 7.50 70.00
- ★ **King Alfred.** Golden yellow perianth, beautiful form with deeply frilled mouth. 35 cts. each 3.50 25.00
- Maximus.** The old-fashioned deep golden yellow, trumpet variety. 1.00 7.00 64.00
- Mme. De Graaff.** One of the largest and finest of all white trumpet Daffodils; perianth pure white, trumpet very pale primrose passing pure white. 15 cts. each 1.00 6.50 58.00
- Mme. Plemp.** Pure white, solid perianth, golden yellow trumpet; very large. 1.00 6.50 58.00
- Olympia.** Yellow trumpet, with slightly paler shaded perianth. 20 cts. each . . . 2.00 15.00
- ★ **Princeps.** Large, clear yellow trumpet, sulphur-white perianth; fine for forcing and cutting. **First size**70 5.00 40.00
Princeps. Mammoth Bulbs. Double nose85 6.50 55.00
- Silver Spur.** Very early bicolor, deep yellow trumpet, white perianth. Opening a few days later than Golden Spur. 1.50 10.00 90.00
- Sir Henry Irving.** Golden yellow. The trumpet is wide and recurved at the lip; petals of the perianth broad and overlapping90 6.50 60.00
- Spurius (Single Von Sion).** An excellent sort for forcing and bedding. Color, clear yellow90 6.50 60.00
- Trumpet Major.** Dutch grown; rich golden-yellow90 6.50 58.00
- Vanilla.** Large yellow trumpet with sulphur yellow perianth, vanilla scented. 15 cts. each 1.50 10.00
- ★ **Van Waveren's Giant.** The largest of all trumpet flowers; of huge dimensions; perianth primrose, trumpet bright yellow. 35 cts. each 3.50 25.00
- ★ **Victoria.** One of the most popular trumpet Narcissi, used very largely by florists for greenhouse culture. A splendid variety for growing in pots in the house. The perianth creamy white, trumpet large, color rich yellow. This variety being perfectly hardy, is used largely for outdoor work. We offer two sizes of bulbs. We recommend the mammoth bulbs for house culture.
First Size Bulbs90 6.50 58.00
Mammoth Bulbs. Double nose . . . 1.25 8.00 70.00
- ★ **Single Trumpet Sorts.** Mixed60 4.50 40.00



Barii Conspicuous

MEDIUM TRUMPET NARCISSUS

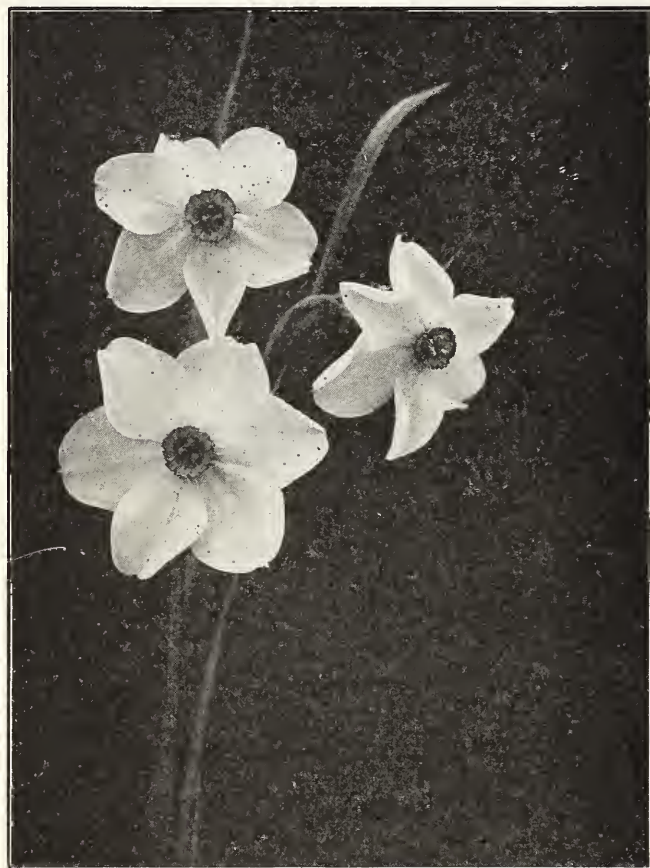
- Barii Blood Orange. Broad lemon petals, orange scarlet eye Doz. 100 1000
\$0.90 \$6.50 \$58.00
- ★Barii Conspicuous. Large, spreading, primrose yellow perianth. Cup yellow, edged with orange scarlet; splendid keeper when cut90 6.50 58.00
- Incomparabilis Autoerat. Large, full, yellow perianth, large yellow cup, broad and well expanded90 6.50 60.00
- ★Cynosure. Perianth primrose white; cup pale orange; a good forcer and fine for cutting75 5.00 45.00
- Frank Miles. Soft clear yellow, twisted perianth, handsome flower 1.00 7.50 66.00
- Lucifer. Handsome white perianth; cup glowing orange red75 5.50 50.00
- Stella. Perianth white; cup deep yellow75 5.50 50.00
- ★Sir Watkin (The Big Welshman). The crown is rich, golden yellow, edged and fringed; perianth pale primrose. Mammoth Bulbs. 1.25 8.00 70.00
- ★Leedsii, Mrs. Langtry. White petals, white crown, edged yellow; very conspicuous70 5.00 40.00
- Leedsii, White Lady. Broad round overlapping perianth, pale canary cup. . .90 6.50 60.00

NARCISSUS POETAZ HYBRIDS

This variety is a cross between the old Poeticus and the Polyanthus varieties. Poetaz Narcissus are hardy, free flowering and most fragrant, the flowers being considerably larger than the Poeticus. Easily grown in pots for house culture.

- ★Admiration. Sulphur yellow perianth. Yellow eye bordered scarlet. Beautiful novelty. . Doz. 100
\$2.00 \$12.00
- Alsace. Petals pure white with yellow eye, slightly edged reddish. Earlier than Ornatus; very fine 1.00 7.50

- ★Elvira. Bearing on long graceful stems heads of three or four large flowers with broad white petals of great substance and a golden-yellow cup edged orange, delicately fragrant; height 24 inches \$1.00 7.00
- ★Helios. Creamy yellow perianth, pure yellow cup, excellent for forcing. 1.25 9.00
- Mignon. White perianth, cup creamy white with deep orange scarlet edge, very distinct 2.00 12.50
- Irene. Perianth sulphur yellow changing to light yellow, cup orange. Very fine flower 2.00 12.50
- Triumph. Pure white perianth, deep yellow eye 1.00 7.50



Poeticus Ornatus

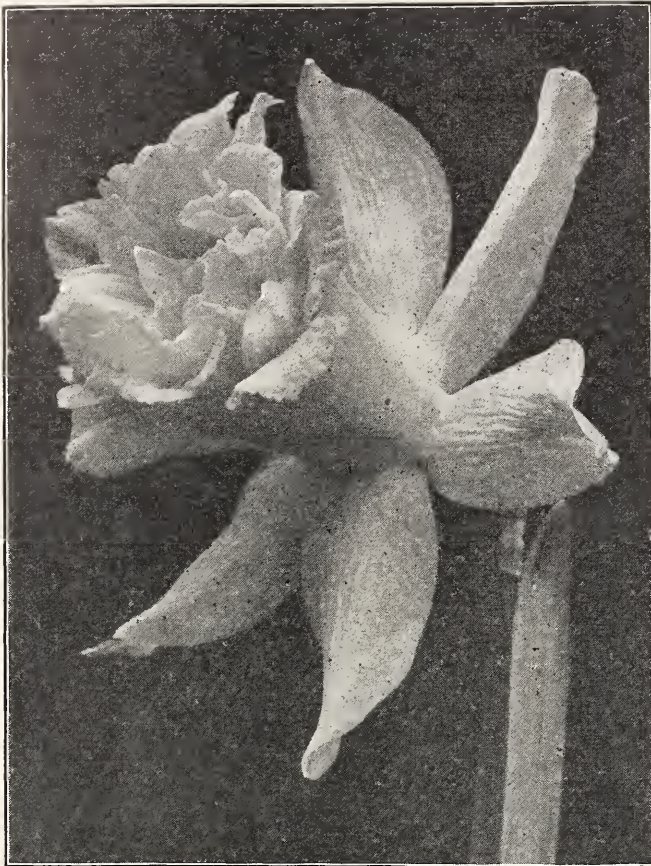
POET'S NARCISSUS

- Poeticus (The Pheasant's Eye, or Poet's Narcissus). Pure white with red crown very fragrant; forces well and is good for cutting. Extra large Doz. 100 1000
\$0.55 \$4.00 \$36.00
- ★P. Almira (King Edward VII). Snow white petals, cup canary yellow, bordered red; taller and larger in every way than Ornatus 1.00 7.00 64.00
- ★P. Ornatus. Blooms a month earlier than the common Poeticus. The flowers are beautifully rounded and large; perianth pure white with a red cup. Mammoth Bulbs.60 4.50 40.00

MIXED NARCISSUS

For Naturalization

- ★Wild Garden Mixture. Made up of several varieties, giving a succession of flowers for five or six weeks. 50 cts. per doz.; \$3.50 per 100; \$30.00 per 1000.



Von Sion

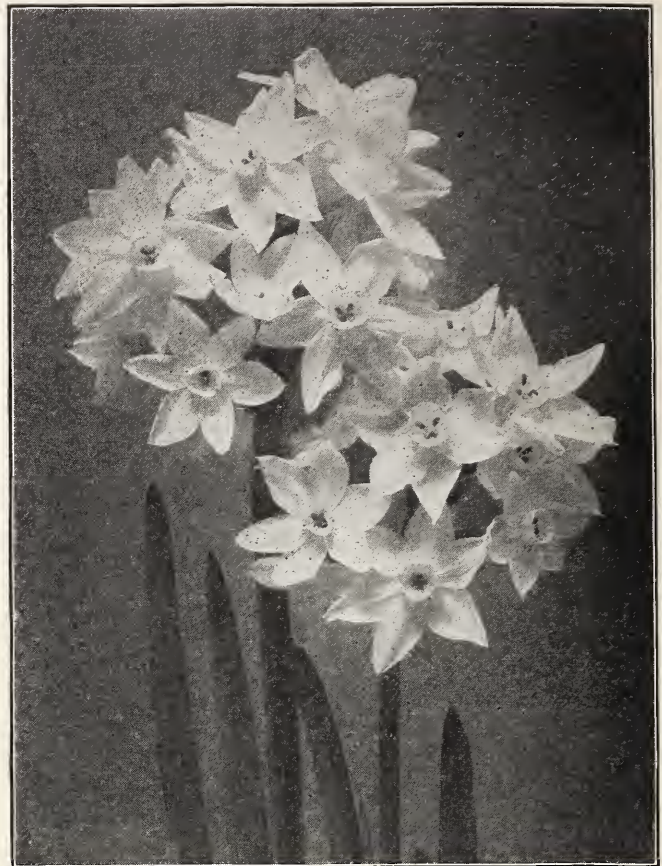
DOUBLE FLOWERED NARCISSUS

- ★ **VON SION** (Telamonius Plenus, Double Yellow Daffodil.) Large, double, deep golden yellow flowers, more extensively grown than any other Daffodil.
- **Mammoth Top Root Bulbs.** \$1.00 per doz.; \$7.00 per 100; \$62.00 per 1000.
- **Von Sion. Single Nose Bulbs.** Large, double, deep Golden Flowers. Selected roots, 70 cts. per doz.; \$5.00 per 100; \$44.00 per 1000.

	Doz.	100	1000
Albus Plenus Odoratus (Double Flowered Poet's Narcissus). Pure white like a Gardenia; very double and fragrant.....	\$0.70	\$5.00	\$44.00
★ Incomparabilis Plenus (Butter and Eggs). Large, double yellow flowers, with orange centre; forces well and is splendid for outdoors.....	.75	5.50	50.00
Orange Phoenix (Eggs and Bacon). Double white flowers, with rich orange segments in the centre; suitable for forcing and outdoor culture.....	.90	6.50	60.00
Silver Phoenix (Codlins and Cream), Large, creamy white, fragrant flowers; the largest of all the double Daffodils; fine for pot culture.....	.75	5.50	50.00
Double Flowered Sorts. Mixed70	5.00	40.00

JONQUILS or NARCISSUS
JONQUILLA

	Doz.	100	1000
Double Sweet Scented. Heads of small very double flowers of a deep golden yellow, and fragrant.....	\$0.60	\$4.50	\$40.00
Single Sweet Scented. Deep yellow; valuable for pot culture.....	.50	3.00	27.00
Campernelle. Large, deep yellow flowers; excellent for cutting; fragrant....	.75	5.50	50.00
Rugulosus. Bright yellow; very fragrant; the largest Jonquil.....	.75	5.50	50.00



Early Paper White Grandiflora

POLYANTHUS NARCISSUS

The varieties of this group produce an abundance of large trusses of very sweet scented flowers, varying in color from pure white to deep golden yellow; easily cultivated in pots or glasses and excellent for forcing. The Paper White Grandiflora and Double White Roman are much used by florists for forcing. (For indoor planting only).

★ Early Paper White Grandiflora. The earliest, largest, and best type of the Paper White, unsurpassed for forcing; pure white.	Doz.	100
Mammoth Bulbs	\$1.00	\$6.00
Extra Large Bulbs75	4.50
Grand Monarque. White, lemon cup..	1.50	10.00
★ Grand Soleil d'Or. Yellow with orange cup; large flower trusses; splendid for forcing.....	1.75	12.00
Mont Cenis. White, yellow cup, extra..	1.50	10.00

CHINESE NEW YEAR'S LILY

No care whatever is required in the cultivation of this beautiful and interesting bulbous plant. Use shallow dishes about three inches deep, into which put about one inch of gravel. Set the bulbs on this and fill in with small stones, and keep the dish full of water. These bulbs do not require to be put in the dark, but a little shading until the leaves begin to grow is beneficial. **Mammoth Bulbs:** 20 cts. each; \$2.00 per doz.; \$12.00 per 100.

Pebbles, Bulb Fibre, and Fancy Bowls

The growing of bulbs in pebbles or fibre for house decoration, especially the several varieties of Polyanthus Narcissus, has become so universal that we are carrying a special line of the more inexpensive Ornamental Dishes and Bowls for indoor bulb culture. We also carry specially selected bulb-fibre and pebbles as this method of growing bulbs is becoming increasingly popular. For prices of Fibre and Pebbles see page 28.

Lily of the Valley, *Convallaria*

LILY OF THE VALLEY

For open ground we supply either clumps or pips. The clumps should be set from six inches to one foot apart, and covered three inches deep. If pips are planted, set them to the same depth but quite thickly (every pip produces a flower).

For growing in the house or for forcing, pips are by far the better, as they have more vigor and will bloom earlier. When potting pips keep the crowns or buds above the soil, cover the tops of the pots with loose moss, place them in a temperature of about 80 degrees, keep constantly moist with tepid water; they should produce flowers in from four to five weeks.

Lily of the Valley Clumps. 50 cts. each; \$5.00 per doz.

★COLD STORAGE for Forcing. \$6.00 per 100; \$50.00 per 1000.

CALLA LILIES

A rather warm temperature is desirable for Callas. Use very rich soil and abundance of water when growing. They may be kept growing continually or given a season of rest as desired. (For indoor planting only.)

Æthiopica (White Calla). Old-fashioned, well-known White Calla or Lily of the Nile. Selected roots, 35 cts. each. \$3.50 per doz. Jumbo roots, 50 cts. each; \$5.00 per doz.

★Elliottiana (Golden Calla). Pure golden yellow flower, foliage distinctly spotted white. Mammoth bulbs, 50 cts. each; \$5.00 per doz.

Godfrey Calla (Everblooming Calla). Flowers smaller than the common Calla, flowering freely and continuously. 50 cts. each; \$5.00 per doz.

OXALIS

General favorites for culture in pots or hanging baskets. When in flower they are exceedingly pretty and the foliage is also very attractive. Plant three or four bulbs in a five-inch pot and keep in a sunny position. (For indoor planting only.)

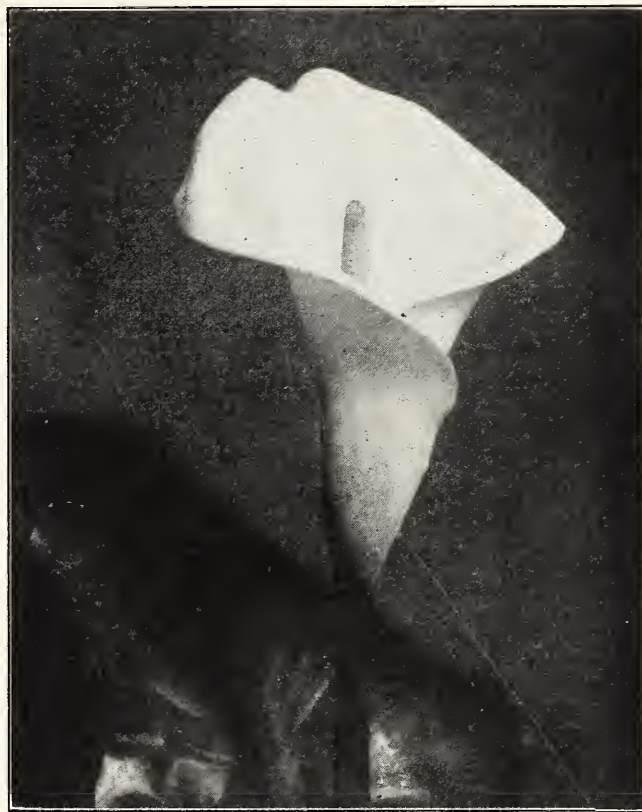
Mammoth bulbs: 40 cts. per doz.; \$2.75 per 100.

★Bermuda Buttercup. Clear yellow, large flowers.

Grand Duchess Alba. Pure white.

Grand Duchess Lavender. Large flowers.

Grand Duchess Rosea. Deep pink.

Calla Lily *Elliottiana*

IRIS HISPANICA

(SPANISH IRIS)

Price: 75 cts. per doz.; \$5.50 per 100; \$48.00 per 1000

We strongly recommend Spanish Iris for forcing in pans and boxes. The colors cannot be surpassed for richness, combination and variety. The varieties offered are carefully selected and have proved to be the best.

Belle Chinoise. Extra good yellow.

Cajanus. Clear yellow, extra early.

Flora. White and light lilac, very early.

Heavenly Blue. Deep sky blue.

King of the Blues. Rich blue, very attractive.

King of the Whites. Extra large, pure white.

Queen Wilhelmina. Snow white, very early.

Royal Blue. Real marine blue.

Superb Mixture. Mixed from named varieties.

IRIS FILIFOLIA and TINGITANA

A strain of Spanish Iris flowering from two to three weeks earlier and producing their large flowers on tall, strong stems. Very suitable for growing in pots in a cold frame or greenhouse.

	Doz.	100
Filifolia. Deep blue, suitable for forcing . . .	\$1.50	\$10.00
Tingitana. Dark violet blue, fine for forcing.	2.00	15.00

DUTCH IRIS

Price: \$1.00 per doz.; \$6.50 per 100; \$58.00 per 1000

This new race is best described as a very early flowering Spanish Iris, but greatly superior as the flowers are of enormous size and remarkable substance. They can be forced easily and will flower two to three weeks before even the earliest of Spanish Iris.

Anton Mauve. Very large and substantial flower of a most pleasing tone of uniform soft blue.

Brijet. Porcelain blue with grayish lilac.

Der Kinderen. Dark purple blue with yellow falls.

Frans Hals. Creamy white orange blotch and pearl blue.

Hart Nibbrig. Brilliant clear blue, extra good.

Hartz. Greyish lilac, flaked yellow, standards purple blue.

Hobbema. White faintly tinged blue, yellow falls.

Roland Holst. Lilac with pale yellow lips.

Van Der Venne. Lilac with creamy white.

Superb Mixture. Mixed from named varieties.

LILIES FOR FORCING AND HOUSE CULTURE

POT CULTURE

Use loam and peat in about equal parts with the addition of a sprinkling of sharp sand and powdered charcoal. Dust the bulbs with charcoal. Cover at least two inches with soil. Water lightly until shoots begin to appear.

Lilium Harrisii (Easter Lily, Bermuda). This is the most popular variety for house culture. A succession of bloom is obtained by bringing into the house a supply as wanted. Extra care is exercised in securing our stocks of Bermuda grown Lily Bulbs.

Extra Large Size Bulbs. 50 cts. each; \$5.00 per doz.; \$40.00 per 100.

Mammoth Bulbs. 90 cts. each; \$9.50 per doz.; \$75.00 per 100.

Lillium Fairy Isle (Easter Lily, Bermuda grown). We have been able to secure a fine stock of this Bermuda grown Harrisii. They grow somewhat taller and produce a greater number of flowers than the bulbs of the same variety from Japan.

Extra Large Size Bulbs. 65 cts. each; \$6.50 per doz.; \$50.00 per 100.

Mammoth Bulbs. \$1.00 each; \$10.00 per doz.; \$80.00 per 100.

Lilium Candidum (Madonna or Ascension Lily). The bulbs which we offer are grown in the north of France, and so far have been entirely free from disease. They produce more flowers of greater size and substance than those grown elsewhere. There is an increasing demand for these every season and we are importing the finest bulbs possible.

First Size Bulbs. 25 cts. each; \$2.50 per doz.; \$18.00 per 100.

Mammoth Bulbs. 30 cts. each; \$3.00 per doz.; \$24.00 per 100.

★ **Lilium Formosum.** This valuable new type of Easter Lily has become very popular, proving to be free from disease and quality is excellent.

Extra Large Size Bulbs. 45 cts. each; \$4.50 per doz.; \$32.00 per 100.

Mammoth Bulbs. 75 cts. each; \$8.00 per doz.; \$60.00 per 100.

Lilium Longiflorum Giganteum. This is a fine type and the most popular of all. Long trumpet-shaped flowers of pure glistening white sweetly scented. This variety we carry in cold storage all the year round.

First Size Bulbs. 35 cts. each; \$3.50 per doz.; \$25.00 per 100.

Extra Large Size Bulbs. 45 cts. each; \$4.50 per doz.; \$32.00 per 100.

Mammoth Bulbs. 75 cts. each; \$8.50 per doz.; \$65.00 per 100.

EASTER IN 1924 COMES ON APRIL 20

HARDY LILIES FOR GARDEN AND POT CULTURE

The Lilies are among the most beautiful and ornamental of cultivated bulbous plants, their stately habit and variously-colored flowers (which are in many cases highly perfumed) rendering them indispensable subjects for greenhouse decoration, and for outside flower garden embellishment. Nearly all the species and varieties may be termed hardy in most localities, if provided with a well drained soil.

The commoner and more plentiful species may be effectively employed for grouping or naturalizing. Many of them are excellent border plants when in flower, being extremely attractive in mixed arrangements, if properly placed in respect of height. Many of the strong-growing Lilies are well adapted for planting among shrubs, where the latter are not too thickly placed. By growing a selection of species in pots, to flower at different times, a valuable addition to greenhouse decorative subjects is secured over a long period, in Summer and Autumn. Lilies should always be planted not less than three in a clump thus . . .

Auratum (Golden Banded Lily of Japan). Immense white flowers, each petal marked with a wide gold band.	Each Doz.	100	
Extra Large	\$0.40	\$4.00	\$30.00
Mammoth Bulbs60	5.00	40.00
★ Auratum Rubrum Vittatum. Very large flowers, ivory white, with broad crimson stripe through centre of each petal	1.00	10.00	
Speciosum Album. Large pure white flowers.			
Extra Large30	3.00	25.00
Mammoth Bulbs60	5.00	40.00
★ Speciosum Magnificum. Rich crimson. The finest colored of all Speciosums.			
Extra Large30	3.00	25.00
Mammoth Bulbs60	5.00	40.00
Speciosum Melpomene. White, suffused with darkest crimson.			
Extra Large30	3.00	25.00
Mammoth Bulbs60	5.00	40.00
Speciosum Rubrum or Roseum. White with rich crimson spots.			
Extra Large30	3.00	25.00
Mammoth Bulbs60	5.00	40.00
Batemanix. Clear orange apricot, without spots40	4.00	30.00
★ Browni. Trumpet-shaped flowers, interior pure white with chocolate colored anthers; exterior brownish purple. Height 3 ft.75	7.50	55.00
Canadense (Canadian Bell-Flowered Lily). Colors vary from reddish orange to yellow. Marked with black. 4 ft. . .	.25	2.00	16.00
Davuricum. This beautiful Lily resembles a native Philadelphicum. It is of easy culture, and blooms in umbels of 3 to 5 upright scarlet flowers15	1.75	12.00
Elegans Leonard Joerg. Rich apricot, spotted, very fine30	3.00	25.00
Elegans Quilp. Vermilion with few black spots30	3.00	25.00

Hanski. Flowers reddish orange, 8 to 12 in a cluster	Each Doz.	1000	
	\$0.75	\$7.00	\$50.00
★ Henryi (The Yellow Speciosum). Each stem carries from 5 to 8 flowers of a rich apricot yellow. Brown spots75	7.50	55.00
Krameri. Blush pink, fragrant and beautiful trumpet-shaped flowers.40	4.00	30.00
★ Macranthum. A variety of Auratum having leaves and flowers much larger, the segments over-lapping almost to the tips, thus forming an immense flower. The petals too, are much stouter and the general appearance of the plant is distinct from any other variety.60	5.00	40.00
★ Myriophyllum (Regal Lily). A good forcer and absolutely hardy. Flowers are white, slightly shaded with pink, with canary-yellow centre.	1.00	10.00	75.00
Pardalinum (Leopard Lily). Rich scarlet and yellow flowers spotted with rich dark brown. Robust and free-flowering.25	2.50	18.00
Superbum. Yellowish red. Height, 4 ft.25	2.50	18.00
Tenuifolium (Coral Lily). The lovely Coral Lily of Siberia. The brightest of all; grows 20 inches high with finely cut foliage; slender stems and beautifully shaped flowers of a coral red.35	3.50	25.00
Tigrinum Splendens (Tiger Lily). Fiery scarlet flower, spotted black. Height 6 ft.25	2.50	18.00
Tigrinum Flore Pleno. Double flowered orange; spotted black. Height 4 ft.25	2.50	18.00

Breck's Celebrated Lily Collections

6 Hardy Lilies in 6 Varieties (our selection)
for \$2.00

12 Hardy Lilies in 12 Varieties (our selection)
for \$4.00

BRECK'S SEEDS FOR GREENHOUSE CULTURE

Most of these seeds are very minute and require great care and delicate handling to prevent failure. They should be sown in pans, in soil in which sufficient sand has been mixed to keep it from caking. In many cases, such as Begonias, Streptocarpus, Calceolarias, etc., no attempt should be made to cover the seed—it should be simply pressed into the surface, after which it should be sprayed with tepid water, and a glass placed over it to prevent too much evaporation; but as soon as the plants are up see that they are ventilated or they will soon become mouldy and soft. On no account must they be left in the sun as shade and moisture are the two principal conditions required for success. As soon as the young plants show their two seed leaves, they should be carefully pricked out into boxes, care being taken not to damage the roots. Many minute plants from the finer seeds are destroyed by drenching them with water. A vaporizer or sprayer should be used for watering.

★Denotes varieties which we can especially recommend. Order by number.

ABUTILON. Free-flowering greenhouse shrubs, excellent for conservatory decoration and for bedding out of doors in the Summer. Seeds sown indoors in February or March produce flowers the same season. Tender perennial. 5 ft.

8500 **Breck's Choice Hybrids Mixed.** Pkt., 25 cts.

ACACIA. Tender Perennial Shrub with graceful branches and sweet scented flowers. 8 to 10 ft.

★8510 **Baileyana.** Quick growing Acacia flowering the second year from seed. Fine long flower sprays excellent for cutting. Pkt., 25 cts.

8512 **Dealbata.** Golden yellow ornamental foliage, large, silvery and fern-like. Pkt., 15 cts.

ACHIMENES. Fine summer-blooming tender greenhouse perennial; valuable for pots or hanging baskets. The flowers vary considerably in size and are of the richest colors.

8520 **Choice Mixed.** Pkt., 50 cts.

AGATHEA (Blue Marguerite). Tender perennial with small daisy-like flowers. Very useful for pot culture. 2 ft.

8525 **Cœlestis.** Blue with yellow centre. Pkt., 15 cts.

8535 **Giant Yellow.** Golden yellow. Pkt., 60 cts.
 ★8538 **Golden Pink Queen.** Golden pink. Pkt., \$1.00.
 8541 **Keystone.** Delicate pink. Pkt., 60 cts.
 ★8544 **Nelrose.** A beautiful shade of silvery pink. Pkt., 60 cts.
 8547 **Phelps White.** Very free-flowering, pure white. Pkt., 60 cts.

8550 **Silver Pink.** True silver pink. Pkt., \$1.00.

ARALIA. Easily grown plants with bright green foliage; very useful as house plants.

8560 **Moseri.** A stronger grower with foliage more graceful than Sieboldi. Pkt., 35 cts.

8564 **Sieboldi.** Large green leaves which resemble Ricinus. Pkt., 25 cts.

ASPARAGUS. Elegant greenhouse plants for hanging baskets or cutting for bouquets and table decorations.

★8570 **Decumbens.** This variety produces long tremulous sprays of delicate foliage. Splendid for hanging baskets. Pkt., 50 cts.

8573 **Plumosus Nanus.** Valuable for hanging baskets and table decorations on account of its graceful finely cut foliage. Pkt., 25 cts.

8576 **Sprengeri.** Valuable as a pot plant for conservatory decoration. Very useful for bouquets, wreaths or sprays. Oz., \$1.00; Pkt., 25 cts.

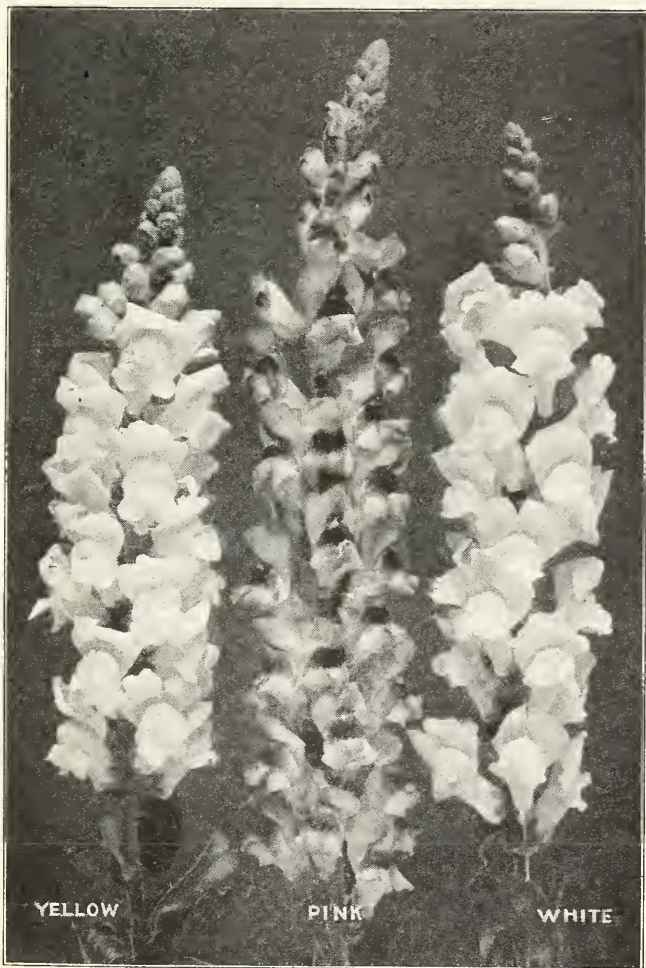
BEGONIAS (For Hanging Baskets). This magnificent class of plants has been improved in late years; for greenhouse and conservatory decorations they make a splendid display as they are very light and graceful in appearance.

8580 **Breck's Superb Mixture.** Pkt., \$1.00.

BROOM. Splendid decorative plants for greenhouse and conservatory.

8585 **Andreana.** Scarlet and yellow. Pkt., 15 cts.

8588 **White Gem.** Pure white flowers borne on long upright stems, excellent for Winter flowering and decorative purposes. Pkt., 15 cts.



ANTIRRHINUM

ANTIRRHINUM (Snapdragon). The following good greenhouse varieties we consider the best for use under glass; treated for Winter flowering they will produce flower stems a yard long; invaluable for cutting.

Calceolaria Plants

The following three varieties are especially suitable for for Greenhouse and Conservatory culture and can be had in perfect flower in time to follow the forcing Dutch Bulbs.

Each, \$1.00; per dozen, \$10.00.

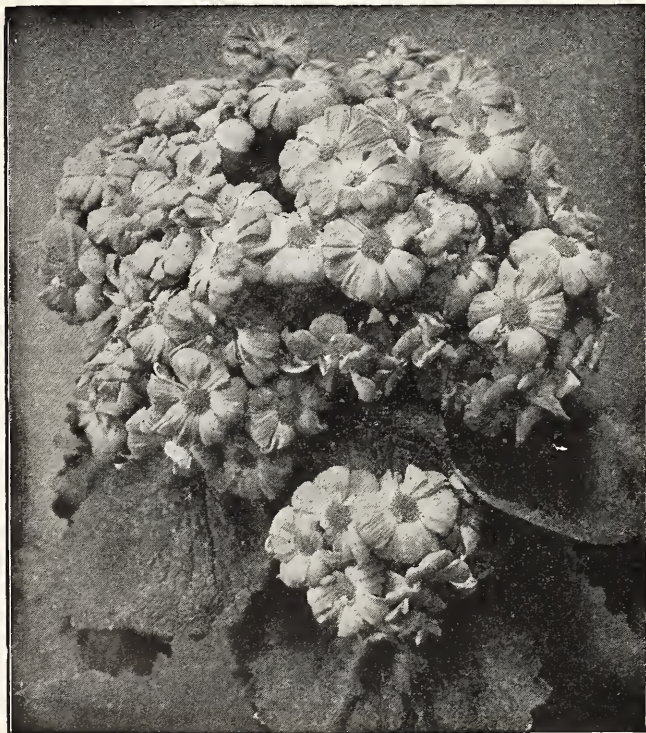
Balleri. Identical in form with but different in color from the varieties Lymani and Stewarti; a rich shade of deep golden bronze, handsome plant of compact habit.

Lymani. A cross between the Herbaceous Calceolaria and the shrubby type. It is a much stronger grower than either of the parents; very compact in growth. A plant three feet in diameter can be grown in one year. The color is a bronzy red with a yellowish tinge showing through the red.

Stewarti. A very beautiful form of Calceolaria bearing freely large sprays of clear yellow flowers; excellent for conservatory decoration.

CALCEOLARIA. Ornamental conservatory and house plants bearing numerous pocket-like flowers of brilliant self colors and handsomely spotted. We can strongly recommend our Special Strain for habit, size and marking of flowers.

- ★8595 **Breck's Scotch Prize Mixed.** Grown for us by a specialist, and is a great improvement in these gorgeous plants. Flowers are beautifully blotched and striped in exceedingly rich colors of yellow, maroon, crimson, white, etc. Pkt., \$1.00.
- ★8598 **Clibranii.** A very beautiful form of Calceolaria, the flowers are of deep golden yellow and produce in great abundance on long slender stems. Pkt., 75 cts.
- 8601 **Dwarf Large-flowered.** Mixed. Pkt., 50 cts.
- 8604 **Giant Spotted.** Mixed. Pkt., 50 cts.
- 8607 **James' Giant Mixed.** Finest for exhibition. Pkt., 75 cts.
- 8610 **Large-Flowered Selfs.** Mixed. Comprising a wide range of colors unsurpassed for quality and excellence. Pkt., 50 cts.
- 8613 **Rugosa.** (Shrubby) for bedding. Mixed. Pkt., 50 cts.
- CHEIRANTHUS.** A valuable hybrid Wallflower for greenhouse decoration; the plants grow to a height of 2 feet, branch freely and each stem carries a long spike of flowers.
- 8620 **Kewensis.** Primrose and mauve. Pkt., 25 cts.
- CHRYSANTHEMUMS.** For blooming either outside or in the conservatory. These can be flowered the same year from seed and are splendid for cut flowers or pot plants as they contain a great variety of color.
- 8625 **Chinese and Japanese Mixed.** Pkt., 20 cts.
- ★8627 **Chinese Mixed.** An extra fine variety for greenhouse or Autumn flowering. Pkt., 25 cts.
- 8629 **Chinese and Pompom Mixed.** Very free-flowering with small flowers; very desirable. 2½ ft. Pkt., 20 cts.
- 8631 **Comtesse de Chambord** (Yellow Paris Daisy). 1½ ft. Pkt., 25 cts.
- 8633 **Frutescens.** (White Paris Daisy). An excellent plant for the greenhouse or Summer bedding out-doors. 1½ ft. Pkt., 10 cts.
- ★8635 **Japanese Mixed.** Extra large double flowers with long twisted petals. Pkt., 25 cts.



CINERARIA

CINERARIA. To produce good plants for decorative purposes sow in May or June. These magnificent plants are indispensable for Spring decoration in the conservatory or window garden.

- ★8640 **Breck's Columbia Strain. Tall Mixed.** This includes every conceivable shade of pink, carmine, crimson, and blue as well as pure white. The flowers are of immense size, borne on plants of robust habit. 2 ft. Pkt., 75 cts.
- ★8642 **Breck's Columbia Dwarf Mixed.** Dwarf compact variety about 15 inches high. Pkt., 75 cts.

8645 **James' Prize.** Choice varieties mixed. Seed is saved for us by one of the foremost growers in England from prize varieties and contains a magnificent range of colors. Pkt., 50 cts.

CINERARIA HYBRIDA (Separate shades).

- 8650 **Antique Rose.** Pkt., \$1.00.
- 8653 **Azure Blue.** Pkt., \$1.00.
- 8656 **Crimson.** Pkt., \$1.00.
- 8659 **Pure White.** Pkt., \$1.00.
- 8665 **Stellata** (Star Cineraria). Mixed. A splendid plant for conservatory decoration during the Winter and Spring. The immense heads of flowers are borne on long stalks, the individual blooms are star-shaped. Pkt., 50 cts.

CLERODENDRON. Attractive greenhouse plant easily grown from seed. The large heads of flowers are as invaluable for decoration as the popular Poinsettia.

- 8670 **Fallax.** Bright scarlet. Pkt., 50 cts.
- CLIANTHUS** (Glory Pea of Australia). Valuable greenhouse Perennial which can also be flowered in the open.
- 8675 **Dampeiri.** Scarlet and black. Pkt., 25 cts.

CLITORIA (Blue Pea). A handsome greenhouse climber of easy culture.

- 8680 **Cœlestis.** Pkt., 25 cts.
- COLEUS.** Bedding and greenhouse plants with beautifully colored foliage. Easily grown from seed. The dwarf, large-leaved strain is especially desirable. The colors range from light to dark red; leaves beautifully marbled and spotted.
- 8685 **Fringed and blotched.** 2 ft. Pkt., 25 cts.
- 8688 **Large Leaved Varieties.** 2 ft. Pkt., 20 cts.
- 8691 **Large Leaved Dwarf.** 1 ft. Pkt., 20 cts.
- 8694 **Choicest Mixed.** Saved from a very choice collection. 2 ft. Pkt., 35 cts.



CYCLAMEN

CYCLAMEN. (Breck's Giant Strain). A superior strain with flowers of largest size and perfect form displayed well above the foliage. Seed may be sown at any time during the Spring or Summer.

- | | | | | |
|-------|--|-----------|-------------|--------|
| ★8700 | Breck's Imperial Mixed. Contains all the brilliant colors | 100 Seeds | Pkt. \$2.00 | \$0.75 |
| 8703 | Bush Hill Pioneer. Persicum | | 3.50 | 1.00 |
| 8706 | Bush Hill Pioneer. Rose | | 3.50 | 1.00 |
| 8709 | Bush Hill Pioneer. Salmon | | 3.50 | 1.00 |
| 8712 | Bush Hill Pioneer. White | | 3.50 | 1.00 |
| ★8715 | Cherry Ripe. Brilliant red | | 3.50 | 1.00 |
| 8718 | Mrs. Buckston. Bright salmon | | 2.50 | .75 |
| 8721 | Papilio (Butterfly Cyclamen).
Mauve | | 2.50 | .75 |
| 8724 | Papilio (Butterfly Cyclamen).
Red | | 2.50 | .75 |
| 8727 | Papilio (Butterfly Cyclamen).
Rose | | 2.50 | .75 |
| 8730 | Papilio (Butterfly Cyclamen).
White | | 2.50 | .75 |

CYCLAMEN—(contd.)

		100 Seeds	Pkt.
8733	Salmon King. Salmon pink.....	2.50	.75
8736	Vulcan. Deep blood red.....	2.00	.50
8739	White Swan. Giant white.....	2.00	.50

CYPERUS (Umbrella Plant). The leaves, which are borne on long stems at the top, spread in the form of an umbrella.
8745 *Alternifolius*. Pkt., 25 cts.

DRACÆNA. Beautiful ornamental foliage plants, useful for greenhouse and sub-tropical decoration; their graceful habit also makes them splendid bedding plants for lawn. *Indivisa* has narrow, green leaves. The under side of the midrib of *Veitchii* is a deep red.

		Oz.	¼ Oz.	Pkt.
8750	Australis. Green.....	\$1.50	\$0.50	\$0.10
8752	Indivisa. Green.....	1.50	.50	.10
8754	Veitchii. Red and green.....	1.50	.50	.10

EUCALYPTUS (Gum Tree). A graceful greenhouse plant of very rapid growth; bluish foliage.

8760 *Globulus*. ¼ Oz., 50 cts.; Pkt., 10 cts.

FERNS. Easily grown greenhouse varieties producing many new forms of various heights with ornamental foliage.

8765 *Greenhouse Varieties Mixed*. In great variety. Pkt., 25 cts.

FRANCOA (Bridal Wreath). A beautiful decorative plant which is of the easiest culture, producing a large number of elegant sprays of pure white flowers.

8770 *Ramosa*. Pure white. Pkt., 25 cts.

FREESIA. The colored Freesias are one of the novelties of late years. The beautifully tinted flowers are sweet scented, easily grown, seedlings will bloom in 6 to 7 months after sowing.

8775 *Hybrida Ragionieri*. Choice mixed. Pkt., 50 cts.

FUCHSIA. A handsome bushy plant with numerous bell-shaped flowers.

8780 *Hybrida Single Mixed*. Pkt., 50 cts.

8782 *Hybrida Double Mixed*. Pkt., 50 cts.

GENISTA. A pretty branching plant bearing clusters of pea-shaped flowers.

8785 *Canariensis*. Bright yellow. ¼ Oz., 50 cts.; Pkt., 10 cts.

GERANIUM. Elegant greenhouse plants having an immense variety of single and double flowers. Valuable for bouquets and decorative purposes.

8790 *Apple Scented*. Pink. Pkt., 35 cts.

8792 *Show Pelargoniums*. Mixed. Pkt., 50 cts.

8794 *Zonale*. Single mixed. Large flowered hybrids exceptionally good both in size and color. Pkt., 50 cts.

GERBERA (Transvaal Daisy). A handsome plant with large daisy-like flowers, 3 to 4 inches across, on 12 to 18 inch stems. Unsurpassed as cut flowers on account of their splendid lasting qualities. They are easily grown from seed.

8800 *Jamesoni Gigantea*. Very handsome large scarlet Marguerite. Pkt., 25 cts.

8802 *Jamesoni Hybrida*. Mixed colors. A much improved strain of Jamesoni. The colors are exquisitely delicate and rich. Pkt., 35 cts.

GLOXINIA

GLOXINIA. The Gloxinias are a magnificent race of summer-flowering plants. Their rich, velvety green leaves and graceful tubular flowers render them valuable for greenhouse and conservatory decoration. One of our private gardener friends has devoted considerable time during the past few years of the improvement of Gloxinias. Our strain is of perfect upright habit, with very large flowers of the most glorious colors. We offer the following in separate colors at \$1.00 per packet.

8810 *Breck's Giant Hybrids*. Mixed. A magnificent strain saved from the newest and best sorts; the flowers are immense, of perfect form and beautiful colors.

8812 *Azure Blue*.

8814 *Blue, Edged White*.

8816 *Mauve*.

8818 *Pink*.

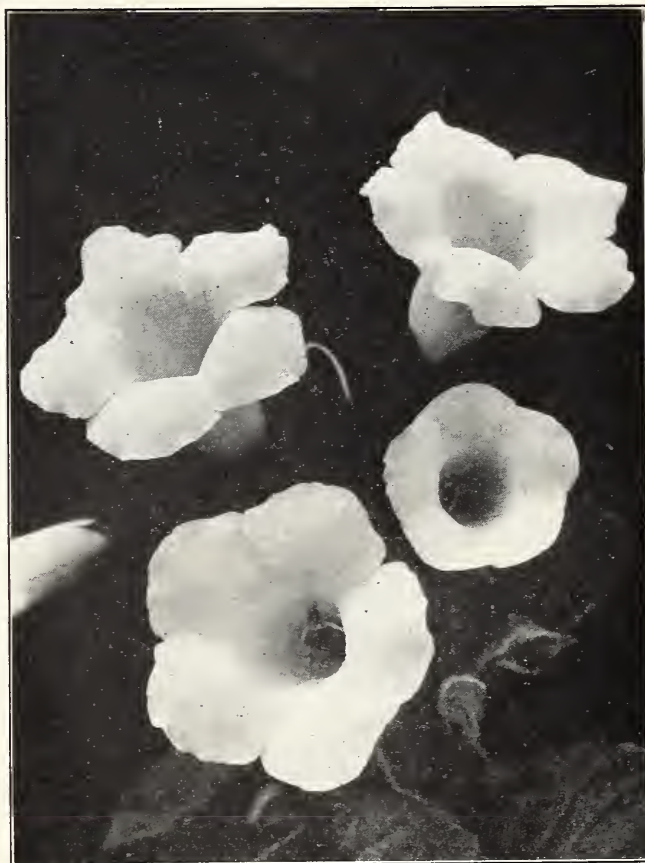
8820 *Purple*.

8822 *Red*.

8824 *Spotted*.

8826 *White*.

8828 *White, Edged Red*.



Gloxinia—Breck's Giant Strain

GREVILLEA (Silk Oak). Fern-like foliage. A fine decorative plant for house and greenhouse; it may be easily grown from seed. 4 ft.

8835 *Robusta*. Oz., \$1.50; ¼ Oz., 50 cts.; Pkt., 10 cts.

HELIOTROPE (Heliotropium). Greenhouse shrub having oval-shaped green leaves and heads of small fragrant flowers that completely cover the plant. They are splendid bedding and pot plants.

8840 *Chieftain*. Deep purple. 2 ft. ¼ Oz. Pkt. \$1.50 \$0.15

8843 *Snowball*. White. 2 ft.25

8846 *Giant Hybrids Mixed*. 2 ft. 1.00 .15

IMPATIENS (Perennial Balsam). A fine bushy, greenhouse plant bearing many single brilliant flowers throughout the season. Blooms almost continuously.

8850 *Sultani*. Bright rose, profuse and continuous blooming. Pkt., 25 cts.

8852 *Holstii*. *Hybrids Mixed*. A splendid mixture of lovely shades. Pkt., 25 cts.

8854 *Holstii*. Vermilion red. Pkt., 25 cts.

ISOLOMA. The Isolomas are splendid pot plants for the decoration of rooms. Seeds sown from January to March are ready to bloom from July to Winter. The richness of colors is simply startling. The plants are not sensitive to change, and are well fitted for cultivation in rooms.

8860 *Breck's New Hybrids*. A splendid mixture. Pkt., \$1.00.

LOTUS. An interesting greenhouse plant having a small pea-shaped flower more nearly black than any flower known.

8865 *Jacobæus*. Brownish black. Pkt., 25 cts.

MAURANDYA. Magnificent, tender climbing perennial having many showy trumpet-shaped flowers. Flowers from seed the first season.

8870 *Choice Mixed*. 10 ft. Pkt., 15 cts.

MIMULUS (Monkey Flower). A genus of handsome profuse-flowering plants, with singularly shaped and brilliant colored flowers.

8880 *Moschatus Compacta* (Musk). The well-known scented variety of musk. Very fine in hanging baskets; tender annual. Flower yellow. ½ ft. Pkt., 25 cts.

8884 *Tigrinus Grandiflora*. Beautifully spotted large flowers, choicest mixed. Pkt., 25 cts.

MUSA ENSETE.

8890 **Abyssinian Banana.** Of all the plants available to us for subtropical effects, this is the most luxuriant. It grows here from 12 to 15 feet high with leaves 6 to 8 feet in length. Seeds sown in January or February produce good plants for Summer bedding. 100 Seeds, \$2.00; Pkt., 25 cts.

PASSIFLORA (Passion Flower). A handsome rapid-growing vine which bears interesting flowers freely throughout the Summer.

8895 **Cœrulea.** Blue. 30 ft. ½ Oz., 50 cts.; Pkt., 15 cts.

PHORMIUM (New Zealand Flax). An exceedingly handsome and curious plant with variegated sword-shaped leaves and orange-colored flowers produced on long spikes well above the foliage. A magnificent plant for lawn and greenhouse decoration.

8900 **Tenaxfoliis Variegatis.** Variegated leaves; 8 to 10 ft. Pkt., 25 cts.

PRIMULA**BRECK'S SUPERB STRAIN**

PRIMULA CHINENSIS (Chinese Primrose). The seed we offer has been saved from only the most beautiful and perfect blooms, of large and fine substance. They are handsomely and heavily fringed while the colors are most diversified.

The following, 50 cts. per packet.

★8910 **Breck's Superb Giant Mixed.** Including the following Giant varieties and many others not catalogued

8913 **Giant Crimson.** A gorgeous shade of crimson.

8916 **Giant Magnifica Blue.** The finest blue Primula, very large and beautifully fringed.

8919 **Giant Pink.** One of the best for indoor decoration, the color being a delicate carmine-pink.

★8922 **Giant Pink Pearl.** Brilliant rose with immense foliage.

8925 **Giant Queen Alexandra.** Giant white flowers, 2½ inches across. Petals are very solid and erect.

8928 **Giant Queen Mary.** A lovely shade of rose pink.

8931 **Giant Rubra.** Immense red flowers of great substance.

8934 **Giant Salmon.** An exquisite color.

★8937 **Orange King.** Orange-salmon shaded terra cotta.

PRIMULA MALACOIDES. A greatly improved type. The plants branch very freely; the flowers are borne in whorls on long stems. Grown in a greenhouse it can be had in bloom in four months from sowing.

8975 **Alba.** White. Pkt., 50 cts.

★8978 **King Albert.** A welcome addition to this family. Color quite distinct, a nice soft rose. Plants grow quite robust and are very free-flowering. Pkt., \$1.00.

8981 **Lilac.** Pkt., 25 cts.

★8984 **Rosea.** Pkt., 50 cts.

PRIMULA OBCONICA GIGANTEA. A cross between Primula Obconica Grandiflora and Primula Chinensis, resulting in a Giant type with large dark foliage and sturdy flower spikes.

The following 50 cts. per packet.

★8960 **Breck's Giant Hybrids.** Vigorous growing large flowers in a mixture of many new shades.

8962 **Gigantea Cœrulea.** Blue.

★8964 **Gigantea Eureka.** Rosy carmine, shaded cerise, clear yellow eye.

8966 **Gigantea Kermesina.** Crimson.

8968 **Gigantea Rosea.** Fine rose.

8970 **Gigantea Oculata.** Auricula eyed.

PRIMULA OBCONICA GRANDIFLORA. The superior quality of our selected strain is acknowledged. It produces exceedingly large and most beautiful flowers of brilliant colors and fine form. The plants are compact and robust in habit, and produce a display of blooms of great substance and beautiful colors.

The following 25 cts. per packet.

8945 **Blue.**

8947 **Crimson.**

8949 **Pink.**

8951 **White.**

8953 **Choice Mixed.**



Primula Obconica

PRIMULAS (Various).

8990 **Floribunda.** Showy primrose yellow, excellent for Winter blooming in pots. Pkt., 50 cts.

8994 **Forbesii.** A charming little Primula with rosy lilac flowers, it is very free blooming and resembles Primula Obconica; can be had in bloom 3 months after sowing. Pkt., 25 cts.

8998 **Kewensis.** Bright yellow. Flowers nearly 1 inch in diameter. A splendid winter-flowering plant. Pkt., 50 cts.

SAINTPAULIA. One of the most charming plants introduced in late years. Useful for greenhouse or table decoration; blooms all Winter.

9005 **Ionantha.** Dark violet blue, golden yellow anthers. Pkt., 50 cts.

SMILAX. A handsome green-house climbing vine with delicate, dark green foliage; very useful for decorative purposes.

9010 **Myrsiphyllum Asparagoides.** Oz., 1.00, ¼ Oz., 30 cts., Pkt., 10 cts.

SOLANUM. Extremely beautiful plants of compact, branching habit, producing numerous brilliant berries set among ornamental green leaves.

9015 **Capsicastrum.** (Jerusalem Cherry). Orange. Pkt., 10c.

★9018 **Clevelandii** (Cleveland Cherry). Improved strain. This is a larger and better fruiting variety than the old type. Excellent when grown as a red berried plant for Thanksgiving and Christmas. Pkt., 25 cts.

9021 **Wetherell's Hybrids.** Red shades. Pkt., 15 cts.

STEVIA. Exceedingly beautiful and useful plants producing graceful sprays of tiny flowers. Largely cultivated by florists for winter bouquets. Good for pot culture.

9030 **Eupatoria.** White. Pkt., 25 cts.

9033 **Serrata.** White. Pkt., 15 cts.

9036 **Lindleyana.** Rose. Pkt., 25 cts.

STREPTOCARPUS. A highly decorative greenhouse plant, very free-flowering. The plants grow about 9 inches high and produce a great variety of trumpet-shaped flowers.

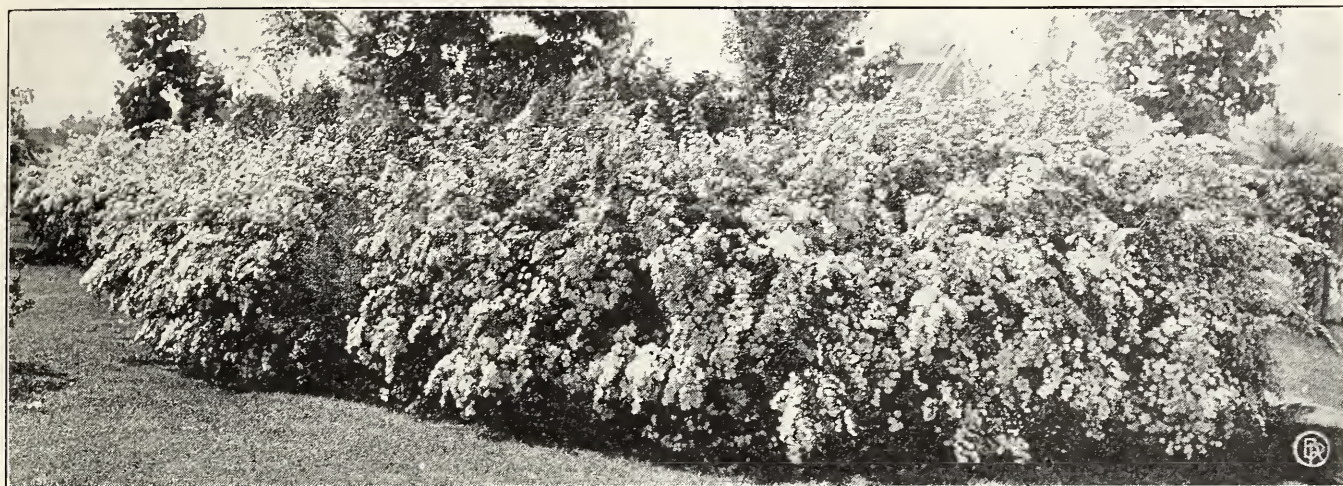
★9045 **Breck's New Giant Mixed.** Without doubt one of the finest strains of this beautiful plant ever sent out, including the charming varieties raised and shown by Mr. Edwin Beckett, and a fine selection of some of the best hybrids, embracing the newer and rarer shades of red and the clear throated varieties. Pkt., 50 cts.

SWAINSONIA. Pure white, Sweet Pea-like, suitable for pot culture or bedding.

9050 **Grandiflora Alba.** Pkt., 50 cts.

TRACHELIUM. Showy blue flowers. An interesting plant for greenhouse decoration producing large feathery heads of flowers.

9055 **Cœruleum.** Pkt., 15 cts.

Massing of *Spiraea Van Houttei*

FLOWERING SHRUBS

When right selections are made, the shrub border will show striking flower or foliage effects from early Spring until Autumn. Even in Winter the shrubs are attractive from the gracefulness and color of their stems and branches.

The following list comprises sorts which have been found of value in this climate. Most varieties may be planted with equal success in either Spring or Autumn. In general for massed effects, the dwarf and small-growing shrubs should be set 2½ feet apart; medium and large-growing, 3 to 5 feet apart.

ARALIA Pentaphylla (*Five-leaved Aralia*). Thorny, arching branches and attractive foliage, 3 to 4 ft. \$0.60 \$6.00 \$40.00

BERBERIS (*Barberry*). The popular hedge-plant, but an especially valuable dwarf shrub for poor soil or exposed situations.

Thunbergii (*Japanese Barberry*).

12 to 15 in.	2.50	18.00
15 to 18 in.	3.25	24.00
18 to 24 in.	4.00	30.00
24 to 30 in.50	4.50 35.00
30 to 36 in.60	6.00

vulgaris (*Common Barberry*)

2 to 3 ft.50	5.00
3 to 4 ft.60	6.00

vulgaris purpurea (*Purple-leaved Barberry*) 2 to 3 ft.50 5.00

CALYCANTHUS floridus (*Carolina Allspice or Sweet Shrub*). An old fashioned favorite. 2 to 3 ft.50 5.00 35.00
3 to 3 ft.75 7.50

CORNUS (*Cornel or Dogwood*). The Dogwoods are attractive for their delicate blossoms in Spring, the clusters of fruit in Autumn, and their bright colored bark in Winter. They grow rapidly, reaching a height of 8 feet or more.

alba Siberica (*Red-barked Dogwood*)

3 to 4 ft.50	5.00	25.00
4 to 5 ft.60	6.00	30.00
5 to 6 ft.75	7.50	40.00

alternifolia (*Blue Dogwood*) 2 to 3 ft.50 5.00

3 to 4 ft.75	7.50
--------------------	-----	------

paniculata (*Gray Dogwood*) 2 to 3 ft.50 5.00

3 to 4 ft.60	6.00
--------------------	-----	------

DEUTZIA. Free flowering shrubs of graceful habit, including varieties of low, medium, and tall growth. Flowers are white, tinted with rose in varying degrees. May and June.

crenata (*Tall-growing, white*) 3 to 4 ft.50 5.00 40.00

4 to 5 ft.60	6.00	45.00
--------------------	-----	------	-------

var. Pride of Rochester. (*Pink, tall-growing*) 3 to 4 ft.50 5.00 40.00

4 to 5 ft.60	6.00	45.00
--------------------	-----	------	-------

gracilis (*Dwarf*) 15 to 18 in.50 5.00 40.00

18 to 24 in.60	6.00	45.00
----------------------	-----	------	-------

var. rosea (*Pink*), 15 to 18 in.50 5.00

18 to 24 in.60	6.00
----------------------	-----	------

DEUTZIA. (Contd.) Each Doz. Per 100

Lemoinei (*Double white; medium height*)

18 to 24 in.50	5.00	40.00
----------------------	-----	------	-------

24 to 30 in.60	6.00	45.00
----------------------	-----	------	-------

DIERVILLA (*Weigelia*). These are free blooming old-fashioned shrubs without which no shrub planting is complete. Their color ranges from white to very dark red, with a variegated leaved variety, which is one of the best of that type of shrub.

candida (*White*) 2 to 3 ft.50 5.00

3 to 4 ft.60	6.00
--------------------	-----	------

floribunda (*Crimson*) 2 to 3 ft.75 7.50

rosea (*Pink*) 2 to 3 ft.50 5.00

3 to 4 ft.60	6.00
--------------------	-----	------

var. nana variegata (*Variegated leaved*)

18 to 24 in.50	5.00
----------------------	-----	------

24 to 30 in.60	6.00
----------------------	-----	------

Eva Rathka (*Dark red*) 2 to 3 ft.75 7.50

FORSYTHIA. The earliest of our Spring flowering shrubs, blooming in April before the leaves appear. They reach a height of 6 to 8 feet; some are upright and stiff in habit of growth, while others, **F. Suspensa** in particular, are drooping and graceful.

Fortunei (*Golden Bell*) 3 to 4 ft.50 5.00 35.00

4 to 5 ft.60	6.00	40.00
--------------------	-----	------	-------

5 to 6 ft.75	7.50
--------------------	-----	------

intermedia 3 to 4 ft.50 5.00 35.00

4 to 5 ft.60	6.00	40.00
--------------------	-----	------	-------

suspensa 3 to 4 ft.50 5.00 35.00

4 to 5 ft.60	6.00
--------------------	-----	------

viridissima 3 to 4 ft.50 5.00 35.00

4 to 5 ft.60	6.00
--------------------	-----	------

HYDRANGEA. Hardy Hydrangeas are old favorites which should be included in every shrub collection. They bloom late in the season and the heads of flowers remain until after cold weather sets in. They do well in dry soil; severe pruning in early Spring is necessary if profusion of bloom is sought.

arborescens var. grandiflora alba

(*New Snowball Hydrangea*). Bears spherical heads of greenish white flowers in July.

2 to 3 ft.75	7.50
--------------------	-----	------

3 to 4 ft.	1.00	10.00
--------------------	------	-------

HYDRANGEA—continued

	Each	Doz.	Per 100
<i>paniculata</i> (<i>Single Hydrangea</i>) 2 to 3 ft.	.60	6.00	
3 to 4 ft.	.75	7.50	
<i>paniculata grandiflora</i> . The most popular variety, with cone-shaped heads of white flowers in September, turning pink when touched by frost.			
2 to 3 ft.	.60	6.00	45.00
3 to 4 ft.	.75	7.50	
Standard, or Tree Form , branched 2 to 3 feet above the ground, the total height being 5 feet or more. A pleasing small tree for lawn or border.	1.50	15.00	
LIGUSTRUM (<i>Privet</i>). While the Privets are usually thought of as being particularly for hedging purposes they also become attractive flowering shrubs when given room to develop.			
Amurense (<i>Amur River Privet</i>)			
18 to 24 in.		3.50	25.00
2 to 3 ft.	.50	4.00	30.00
Ibota (<i>Japanese Privet</i>) 18 to 24 in.		3.50	25.00
2 to 3 ft.	.50	4.00	30.00
4 to 5 ft.	.75	6.00	40.00
ovalifolium (<i>California Privet</i>)			
18 to 24 in.		1.50	10.00
2 to 3 ft.	.25	2.00	15.00
3 to 4 ft.	.35	2.75	20.00
LONICERA (<i>Honeysuckle</i>). These grow to medium height, and do well in dry shady spots where many other flowering shrubs will not thrive. The blossoms are similar to those of the well-known climbing form, and are followed by red berries.			
fragrantissima . White flowers, 2 to 3 ft.	.50	5.00	
Morrowi (<i>True</i>). Yellowish flowers; not so tall as most of the Honeysuckles			
2 to 3 ft.	.50	5.00	35.00
3 to 4 ft.	.60	6.00	45.00
Ruprechtiana . White flowers; red or yellow berries, 2 to 3 ft.	.50	5.00	
3 to 4 ft.	.60	6.00	
Tatarica (<i>Tatarian Honeysuckle</i>). The most popular of the bush Honeysuckles. Tall growing, with pink or crimson flowers, 2 to 3 ft.	.50	5.00	35.00
3 to 4 ft.	.60	6.00	45.00
PHILADELPHUS (<i>Syringa</i> or <i>Mock-Orange</i>). These old fashioned shrubs cannot be surpassed for wealth and fragrance of bloom. Varieties may be selected which will grow tall, or which will not exceed a height of 4 to 5 feet. The Golden Syringa is the brightest and best known of our yellow leaved shrubs.			
coronarius (<i>Mock Orange</i>)			
3 to 4 ft.	.50	5.00	35.00
4 to 5 ft.	.60	6.00	45.00
var. foliis aureis (<i>Golden Syringa</i>)			
15 to 18 in.	.50	5.00	
18 to 25 in.	.60	6.00	
grandiflorus (<i>Sweet Syringa</i>)			
3 to 4 ft.	.50	5.00	35.00
4 to 5 ft.	.60	6.00	45.00
Lemoinei , 2 to 2½ ft.	.50	5.00	
2½ ft. to 3 ft.	.60	6.00	
var. Avalanche , 2 to 2½ ft.	.50	5.00	
2½ ft. to 3 ft.	.60	6.00	
SPIRÆA . One of the most valuable classes of hardy shrubs. The best known is, of course, S. Van Houttei , which has superseded the old-fashioned Bridal Wreath in popular favor. S. Arguta is the earliest to bloom, followed by the feathery leaved S. Thunbergii . The dwarf growing S. Anthony Waterer blooms during the Summer. S. opulifolia aurea is a tall rapid-growing form with yellow foliage.			
arguta (<i>Meadowsweet</i>) 2 to 3 ft.	.50	5.00	
3 to 4 ft.	.60	6.00	
Anthony Waterer (<i>Dwarf pink</i>). One of the best dwarf shrubs, reaching a height of 2½ ft. 15 to 18 in.	.50	5.00	

	Each	Doz.	Per 100
callosa alba (<i>Dwarf White</i>) 15 to 18 in.	.50	5.00	40.00
opulifolia (<i>Nine Bark</i>). Tall, rapid growing. 3 to 4 ft.	.50	5.00	35.00
4 to 5 ft.	.60	6.00	45.00
var. aurea (<i>Golden Spiræa</i>)			
3 to 4 ft.	.50	5.00	35.00
4 to 5 ft.	.60	6.00	45.00
prunifolia fl. pl. (<i>Bridal Wreath</i>)			
2 to 3 ft.	.50	5.00	
sorbifolia (<i>Asb-leaved Spiræa</i>)			
3 to 4 ft.	.50	5.00	
Thunbergii (<i>Fine-leaved Spiræa</i>) Feathery, light green foliage; small white flower in April.			
18 to 24 in.	.50	5.00	
24 to 30 in.	.60	6.00	
Van Houttei (<i>Lace Bush</i>)			
3 to 4 ft.	.50	5.00	35.00
4 to 5 ft.	.75	7.50	60.00
5 to 6 ft.	1.00	10.00	75.00
SYMPHORICARPOS racemosus (<i>Snow-berry</i>). Prominent white berries in Autumn.			
2 to 3 ft.	.50	5.00	35.00
3 to 4 ft.	.60	6.00	
vulgaris (<i>Indian Currant</i>). Bright red berries, 2 to 3 ft.	.50	5.00	
SYRINGA (<i>Lilac</i>). Unless intended for a hedge, the Lilacs should be planted far enough apart so that they can develop naturally, under which conditions they will bloom profusely from top to bottom. Especial attention should be called to the less common varieties, S. Josikaea and S. Persica . The former is late blooming, its foliage being plicated and leathery, not subject to rust and mildew as is the case with the Common Lilac. The Persian Lilac is a slender growing shrub with a tendency to droop, especially when in bloom. Amongst the named Hybrids many striking colors will be found.			
Josikaea , 2 to 3 ft.	.60	6.00	
Persica (<i>Persian Lilac</i>) 2 to 3 ft.	.60	6.00	
3 to 4 ft.	.90	9.00	
var. alba 2 to 3 ft.	.60	6.00	
3 to 4 ft.	.90	9.00	
villosa 2 to 3 ft.	.60	6.00	
3 to 4 ft.	.90	9.00	
vulgaris (<i>Common Lilac</i>) 2 to 3 ft.	.60	6.00	45.00
3 to 4 ft.	.75	7.50	60.00
4 to 5 ft.	1.00	10.00	
var. alba (<i>Common White Lilac</i>)			
2 to 3 ft.	.60	6.00	45.00
3 to 4 ft.	.75	7.50	60.00
4 to 5 ft.	1.00	10.00	
var. alba grandiflora (<i>Large Single White</i>) 2 to 3 ft.	.90	9.00	
Named French Hybrids			
Charles X (<i>Single Dark Red</i>) 2 to 3 ft.	.90		
3 to 4 ft.	1.25		
La Tour d'Auvergne (<i>Double Purple</i>)			
2 to 3 ft.	.90		
3 to 4 ft.	1.25		
Ludwig Spaeth (<i>Single Dark Red</i>)			
2 to 3 ft.	.90		
3 to 4 ft.	1.25		
Madame Lemoine (<i>Double White</i>)			
2 to 3 ft.	.90		
3 to 4 ft.	1.25		
Marie le Graye (<i>Dwarf Single White</i>)			
2 to 3 ft.	.90		
President Grévy (<i>Double Blue</i>)			
2 to 3 ft.	.90		
3 to 4 ft.	1.25		
Senator Volland (<i>Double Red</i>) 2 to 3 ft.	.90		

We have a full line of Garden Arches and Benches
 Made in our own workshops
 If interested write for Prices and for Complete Nursery Catalogue



HARDY HERBACEOUS PERENNIALS

Perennials supply us with some of the most beautiful and interesting plants available for out-of-door culture. By judicious selection a succession of bloom may be obtained from Spring until frost, with a wonderful range of color. Time of flowering and approximate height of each is indicated.

Not less than 6 of one variety at the dozen rate; not less than 25 of one variety at the 100-rate

ACHILLEA Ptarmica fl. pl., (The Pearl)	<i>Each</i>	<i>Doz.</i>	<i>Per 100</i>			
double white, July, 1½ to 2 ft.	\$0.25	\$2.50	\$20.00			
ALYSSUM saxatile compactum , yellow,						
April to June, 6 in.25	2.50				
AQUILEGIA (Columbine)						
CANADENSIS , scarlet and yellow, April to						
June, 2 ft.25	2.50				
chrysantha , golden yellow, May to Aug.,						
3 ft.25	2.50	20.00			
Erskine Park Hybrids , a superior strain						
2 to 3 ft., May to July.30	3.00	25.00			
hybrida , various colors, May to July, 3 ft.	.25	2.50	20.00			
Long-spurred hybrids , May to August,						
2 to 3 ft.25	2.50	20.00			
vulgaris , various colors, April to June,						
2 ft.25	2.50	20.00			
<i>var. alba</i> , pure white, 2 to 3 ft.25	2.50	20.00			
ARABIS alpina (Rock Cress) , white, April						
to May, 6 in.25	2.50				
ARMERIA (Sea Pink, Thrift)						
formosa , deep rose, 1 to 1½ ft., June. .	.25	2.50	18.00			
maritima , purple, May to June, 4 to 6						
in.25	2.50				
ASTER (Michaelmas Daisies) . Splendid for late bloom.						
Alpinus . Pale pink to white; low-grow-						
ing, good for rock-work.25	2.50				
Pink Beauty , pink, 2 ft.25	2.50	20.00			
Climax , blue, 3 ft.25	2.50	20.00			
Feltham Blue , blue, 3 ft.25	2.50	20.00			
St. Egwin , pink, 3 ft.25	2.50				
lævis , light blue, 4 ft., Sept. to Oct. . .	.25	2.50	20.00			
Novæ Angliæ , purple, 4 ft.25	2.50	20.00			
<i>var. roseus</i> , rosy-pink, 4 ft.25	2.50				
Spectabilis . Blue; improved "Climax"	.25	2.50				
Subcæruleus . Low, tufted foliage;						
large pale blue flowers.25	2.50				
Tartaricus , blue, 6 ft.25	2.50				
White Queen , white, 4 ft., Sept. to Oct.	.25	2.50	20.00			
COREOPSIS grandiflora , yellow, June to						
Sept., 3 ft.25	2.50	20.00			
lanceolata , yellow, 18 in.25	2.50	20.00			
DELPHINIUM (Hardy Larkspurs)						
Chinensis , gentian blue, 2½ ft.25	2.50	20.00			
<i>var. alba</i> , white.25	2.50	20.00			
double dark blue.	\$0.30	\$3.00	\$25.00			
Erskine Park Hybrids , mixed, 4 ft.25	2.50	20.00			
formosum , dark blue, 4 to 5 ft.25	2.50	20.00			
Gold Medal Hybrids , mixed colors.25	2.50	20.00			
Belladonna , light blue, 4 ft.25	2.50	20.00			
Bellamosa (New) , deep blue, 4 ft.25	2.50	20.00			
GYPSOPHILA paniculata (Baby's Breath) ,						
white, July and Aug., 2 ft.25	2.50	20.00			
HELENIUM autumnale superbum ,						
clear yellow, Sept., 5 ft.25	2.50				
<i>var. rubrum</i> , red, 3 ft., September.30	3.00				
Riverton Beauty , rich, lemon-yellow,						
black center, August to September, 4 ft.	.25	2.50				
HELIANTHUS decapetalus (Sunflower)						
Yellow, September and October, 5 ft. .	.25	2.50				
multiflorus fl. pl. , double yellow, Sep-						
tember to November, 4 ft.25	2.50				
HEMEROCALLIS						
flava , (<i>Homestead Lily</i>) orange, July and						
August, 3 ft.25	2.50				
kwanso fl. pl. double orange, July and						
August, 3 ft.25	2.50				
Thunbergii , bright yellow, June and						
July, 2 to 3 ft.25	2.50	20.00			
GERMAN IRIS						
The German Iris is among the most desirable and most easily						
grown of our Spring-flowering hardy plants, producing in May						
showy flowers of exquisite coloring, combining the richest and most						
delicate tints. For best results plant in a well-drained, sunny						
position, barely covering the roots. In the following descriptions,						
"S" signifies the standards, or erect petals, "F" the falls, or						
drooping petals.						
Alcazar . S., light-bluish violet. F., deep	<i>Each</i>	<i>Doz.</i>	<i>100</i>			
purple with bronze-veined throat.	\$1.00					
Atropurpurea . S. and F., rich purple	.25	\$2.00				
Archevêque . S., deep purple-violet. F.,						
rich deep velvety violet. Fragrant.	1.00					
Black Prince . S., purplish-blue. F.,						
Black-purple.20	2.00	\$12.00			
Brechtia . S., bronzy-yellow. F., blue-						
violet, bordered bronze.30	5.00				
Caprice . S., rosy red. F., deeper rosy						
red, very handsome.	1.00	10.00				

	Each	Doz.	Per 100
Celeste. S. and F., pure azure-blue, tall	\$0.25	\$2.50	
Conspicua. S., yellow. F., purple.15	1.50	10.00
Cypriana Superba. S., soft blue. F., violet-purple.50	5.00	
Eldorado. S., yellowish bronze, shaded heliotrope. F., purple, shaded bronze	1.00		
Fairy. S. and F., white, delicately bordered and suffused with soft blue.25	2.50	15.00
Flavescens. Light primrose-yellow.15	1.50	
Florentina. S. and F., pale-blue.15	1.50	
Florentina alba. S. and F., light blue changing to white.15	1.50	10.00
Foster's Yellow. S. and F., creamy yellow	.30	3.00	
Gagus. S., light yellow. F., crimson, reticulated white and yellow, with clear yellow edge.30	3.00	20.00
Garrick. S., pale blue. F., deep violet-blue	.25	2.50	
Garda (Intermediate). S., creamy yellow. F., darker yellow, veined.50	5.00	
Gracchus. S., yellow. F., velvet-purple	.15	1.50	10.00
Halfdan (Intermediate). Creamy white.35	3.50	
Helge (Intermediate). Lemon-yellow, pearl shading.35	3.50	
Honorabilis. S., Indian yellow. F., chestnut	.15	1.50	10.00
Kharput. Rich, royal purple.25	2.50	15.00
King of Iris. S., yellow. F., dark brown, bordered yellow.50	5.00	
Lohengrin. S. and F., deep violet mauve	.50	5.00	
Mme. Chereau. White, margined blue.15	1.50	
Mrs. Gladstone. S., white. F., tipped dark-purple and white striped.25	2.50	
Mrs. H. Darwin. White, veined purple	.15	1.50	10.00
Mrs. Neubonner. Deep golden yellow.25		
Mithras. S., light yellow. F., wine-red, bordered yellow.50	5.00	
Monseigneur. S., violet. F., purple-crimson.75		
Nibelungen. S., fawn yellow. F., violet-purple.50		
Pallida Dalmatica. Stately spikes of lavender blue.25	2.50	15.00
Pallida Khedive. Soft lavender with distinct orange beard.50	5.00	
Pauline. S., lavender, F., darker.20	2.00	
Pallida speciosa. S., violet-blue. F., purple.15	1.50	10.00
Perfection. S., light blue. F., violet-black.35		
Princess Victoria Louise. S., light-sulphur yellow. F., violet-red, edged creamy white.25	2.50	
Purple King. Full purple.20	2.00	15.00
Queen of May. S. and F., bright rosy-lavender.15	1.50	10.00
Rhein Nixe. S., pure white. F., violet-blue, edged white.50		
Van Geertie. S., lavender. F., purple-black	.15	1.50	10.00
Violacea grandiflora. S., blue. F., violet-blue.25	2.50	
Walneriana. S., light-blue. F., pale-violet.25	2.50	
Shakespeare. S., bronzy-yellow. F., maroon, reticulated yellow.15	1.50	10.00
Sherwin Wright. Rich golden yellow.50		
Mixed. All colors.		1.50	10.00

JAPANESE IRIS

A very important group of hardy Iris, quite distinct from any other. They are of strong, vigorous growth, with very large single, double or semi-double flowers, beautifully colored. Well adapted for damp or sunny locations, in loam or sandy soil.

Our stock of Japanese Iris is this season arranged under the following color classification:

Purple. Chiefly clear, deep purple shades, some with a touch of gold at base of petals.

Purple and White. Varying from deep purple edged and veined with white, to white blotched or streaked with purple.

Lavender. Pale lavender, veined with purple, deeper purple in center.

Blue-Lavender. Approaching as nearly blue as is found in Japanese Iris. White and gold at center; some striped white.

Price: 35 cts. each; \$3.50 per doz.; \$25.00 per 100

Mixed Colors: \$3.00 per doz.; \$20.00 per 100

	Each	Doz.	Per 100
LUPINUS (<i>Lupinus</i>)			
polyphyllus, deep blue, June, July, 3 ft	\$0.25	\$2.50	
alba, white, June and July, 3 ft.25	2.50	
rosea, rosy-pink.25	2.50	
LYCHNIS Chalcedonica (<i>London Pride</i>)			
crimson, June to August, 3 ft.25	2.50	
Haageana, brilliant scarlet, July and August, 12 in.25	2.50	
vespertina fl. pl., double white, June to September.25	2.50	
viscaria splendens plena (<i>Ragged Robin</i>) fiery rose, June, 12 in.25	2.50	
LYSIMACHIA nummularia (<i>Moneywort</i>), yellow, June to September.15	1.50	10.00
LYTHRUM roseum superbum, bright rose, July to September, 4 ft.25	2.50	20.00
MALVA moschata, rose, June to Sept. 2 ft.	.25	2.50	
MENTHA viridis (<i>Spearmint</i>), 1 ft.25	2.50	
piperita (<i>Peppermint</i>), 1 ft.25	2.50	
MONARDA didyma, deep red, June to September, 3 ft.25	2.50	
MYOSOTIS palustris (<i>Forget-me-not</i>) light blue, all Summer, 6 in.25	2.50	
GENOTHERA (<i>Evening Primrose</i>)			
speciosa, white, all Summer, 18 in.25	2.50	
Youngii, bright yellow, all Summer, 18 in.	.25	2.50	
PACHYSANDRA terminalis, (<i>Japanese Spurge</i>) white, May and June, 8 in.25	2.50	15.00
PAPAVER nudicaule (<i>Iceland Poppy</i>) bright yellow, all Summer, 8 in.25	2.50	
Oriental (<i>Oriental Poppy</i>) crimson-scarlet, June, 2 ft.25	2.50	20.00
var. Goliath. Oriental red.35	3.00	
var. Mrs. Perry. Salmon pink.35	3.00	
var. Oriflamme. Orange-scarlet.35	3.00	
var. Perry's White. Pure White.35	3.00	
PENTSTEMON barbatus Torreyi, (<i>Beard-tongue</i>) bright scarlet, July, 4 ft.	.25	2.50	20.00
SPIRÆA (<i>Meadowsweet</i>)			
aruncus Kneiffi, white, June and July, 3 to 4 ft.25	2.50	
Gladstone, white, June and July, 2 ft.25	2.50	
Chinensis, pink, July and August, 1½ ft.	.25	2.50	
Japonica, white, June and July, 2 ft.25	2.50	20.00
Kamtschatka, cream-white, July, 5 ft.25	2.50	20.00
STATICE latifolia, bright blue, July to September, 2 ft.25	2.50	
STOKESIA cyanea, lavender-blue, August to October, 1 ft.25	2.50	
var. alba, white form of above.25	2.50	20.00
THYMUS vulgaris (<i>Common Thyme</i>) 6 to 8 in.25	2.50	
TRADESCANTIA Virginiana, violet purple, all Summer, 2½ ft.25	2.50	
TRILLIUM grandiflorum (<i>Wood-lily</i>) white, May, 9 in.15	1.50	
TRITOMA (<i>Red-hot Poker</i>)			
Pfitzerii, orange-scarlet, Aug. to Oct., 4 ft.	.25	2.50	
TROLLIUS Europæus, lemon yellow, all Summer, 1 ft.25	2.50	
var. Orange Globe, deep orange, May and June, 1 to 1½ ft.25	2.50	
TUNICA saxifraga, rosy-white, June to August, 6 in.25	2.50	
VERONICA amethystina, amethyst-blue, June, 1 ft.25	2.50	
longifolia subsessilis, rich blue, Aug. and Sept., 2 ft.25	2.50	
rupestris, deep blue, May and June, 4 in.	.25	2.50	
spicata, clear blue, 3 ft.25	2.50	

VINCA minor (*Myrtle*), blue, April to
June, 4 to 6 in. \$0.15 \$1.50 \$10.00

VIOLA (*Hardy Violets*)

cornuta, dark blue, all Summer, 9 in. 25 2.50 20.00
var. alba, white, all Summer, 9 in. 25 2.50 20.00
var. atropurpurea, purple, 9 in. 30 3.00

Tufted Pansies

Admiration, purple, dark blotch. 25 2.50 15.00
Lutea Splendens, rich golden yellow. 25 2.50 15.00
White Perfection, a fine white. 25 2.50 15.00

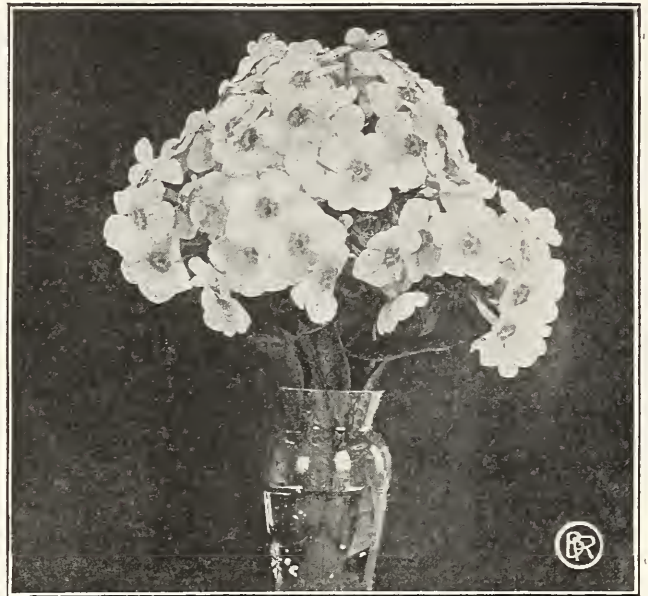
YUCCA filamentosa (*Adam's Needle*), 3
years, strong plants. 75 6.00



Pæony Charlemagne

PÆONIES

	<i>Each</i>
Alice de Julvecourt. White and lavender	\$0.50
Baroness Schroder. Flesh white fading to milk white.	1.50
Boule de Neige. Milk white, center flecked crimson.	1.00
Brodicea. White and carmine.	1.00
Candidissima. Pure white, sulphur center.75
Charlemagne. Lilac white, blush center.50
Couronne d'Or. Pure white, with ring of yellow stamens.75
Cry-Rosea. Pink.75
Cytherie. Cream white, center flaked with crimson.	2.00
Daubeton. Deep shell pink, early.	1.50
Daybreak. Violet rose, early.75
Delachie. Violet crimson, tipped silver.50
Dorchester. Hydrangea pink.75
Edulis Superba. Mauve pink, early.75
Felix Crousse. Brilliant rose.	1.00
Festiva Maxima. White, flaked crimson.75
L'Elegante. Light pink.50
L'Esperance. White splashed with pink, collar milk white.	1.50
La Tendresse. Milk white center, flaked with crimson.	1.00
La Tulipe. Lilac white, striped crimson.75
M. Charles Leveque. Rose white, center deeper shade.	1.50
Madame Crousse. Pure white, center flaked crimson.75
Milton Hill. Pale lilac rose.	3.00
Pierre Dessert. Crimson purple, silvery tips.	2.00
Raphael. Dark purple, early.	1.50
Red Dragon. Red.50
Rosea Plenissima. Deep pink.50
Sarah Carstenson. Shell pink, changing to deep flesh.	5.00



HARDY PHLOX

Prices: *Each*, 25 cts.; *dozen*, \$2.50; *per 100*, \$18.00 *except as noted*

Albion. White, faint pink eye.
Annie Cook. Flesh-pink, fragrant.
B. Compte. Rich, French-purple, late. <i>Each 30 cts.; per doz., \$3.00.</i>
Baron von Dedem. Scarlet, red center.
Bridesmaid. White, crimson center.
Cameron. Soft pink, suffused with white.
Coquelicot. Scarlet, crimson eye.
Eclairer. Rosy magenta.
Elizabeth Campbell. Light salmon, pink center. <i>Each, 35 cts.; per doz., \$3.50.</i>
Flora Hornung. Pale pink, center suffused carmine.
F. A. Buchner. Large, pure white.
Gen. von Heutz. Salmon, purple center.
Gladstone. Large, rose color, red eye.
Glenwood. Clear bright red.
Gruppenkönigen. Flesh-rose, carmine eye.
Henri Murger. Red, salmon center, late.
Jeanne d'Arc. Pure white, tall.
Joseph Barr. Deep, purplish carmine.
L'Esperance. Lavender pink, white center.
Lothair. Bright crimson.
Louise Abbema. Dwarf, pure white.
Mme. Meuret. Flame, carmine center.
Mme. Benzanson. Crimson.
Mme. Paul Dutrie. Soft pink.
Mme. P. Langier. Bright red.
Marquise de St. Paul. Tall, pure white.
Miss Lingard. Early, white; tall.
Mrs. Oliver. Bright pink.
Nana Cœrulea. Lavender blue.
Pantheon. Bright carmine-rose.
R. P. Struthers. Purplish-salmon.
Rosenberg. Reddish-violet.
Rynstrom. Carmine-rose.
Selma. Pink, cherry-red center.
Sir Edward Landseer. Bright crimson.
Stella's Choice. Pure white, tall.
Superbians. Pink, crimson eye.
Thor. Salmon pink, red eye. <i>Each 35 cts.; per doz., \$3.50.</i>
Von Lassburg. Pure white.
W. C. Egan. Delicate lilac. <i>Each 35 cts.; per doz., \$3.50.</i>
Mixed. All colors.

FERTILIZERS & CHEMICALS

BRECK'S LAWN AND GARDEN DRESSING

Its superiority over stable-manure can scarcely be estimated as the latter, in addition to disfiguring the lawn by its unsightly appearance, also gives out an unpleasant odor and always contains weeds and other undesirable seeds. Great care should be taken to distribute this dressing evenly, and in no greater quantities than recommended on the tag which accompanies each bag, as a too liberal application will injure the sward. It can be applied at any time during the year, from April to November as often as the grass seems to need nourishment. Never apply the dressing while the grass is wet with dew or rain. Any time the grass is perfectly dry will answer but the best time to apply it is just before a shower.

Trial bag for 1000 square feet	10 lb. bag	\$0.75
Trial bag for 2500 square feet	25 lb. bag	1.25
50-lb. bag for 5000 square feet	50 lb. bag	2.25
100-lb. bag for 1/4 acre	100 lb. bag	4.00

SOIL, PEAT, LEAF-MOULD, Etc.

Lump Charcoal. For potting soils and greenhouse use. Per bag, \$1.00.

Prepared Potting Soil. Specially prepared with peat, leaf-mould, loam, sand, and fertilizer. Per peck, 30 cts.; per bushel, \$1.00; per 3-bushel sack, \$3.00.

Peat, Rotted Fibrous. Fine, light, and sweet. For some varieties of plants this is invaluable. Per peck, 30 cts.; per bushel, \$1.00; per 3-bushel sack, \$3.00.

Silver Sand. For rooting cuttings and mixing with potting soil. Per peck, 60 cts.; per bushel, \$2.00.

Fern Root or Orchid Peat. Per bushel, \$1.50; per 3-bushel sack, \$4.00.

Sphagnum Moss. Per 2-bushel bag, \$1.00; per bale, \$9.00.

Agricultural Salt. For killing weeds in Asparagus beds, walks, driveways, etc. Per 100 lbs., \$1.50.

BON ARBOR PLANT FOOD

Simply mix 30 gallons of water to one pound of Bon Arbor. A very powerful chemical fertilizer. Per 1/2-lb. can, 25 cts.; 1-lb. can, 50 cts.; 5-lb. can, \$2.25; 50-lb. box, net, \$15.00.

BULB FIBRE

For growing bulbs in fancy bowls without drainage for table decoration. Per quart, 15 cts.; per peck, 75 cts.; per bushel, \$2.50.

PEBBLES

For growing bulbs, and for the indoor window garden as a base for potted plants. Per quart, 10 cts.; 4 quarts, 30 cts.; per peck, 50 cts.

FINE GROUND FERTILIZER BONE

We have a high grade of this valuable fertilizer prepared especially for us. It is useful for all crops, but especially for grass lands and Fruit Trees. Per 50-lb. bag, \$1.75; per 100-lb. bag, \$3.00; per ton, \$50.00.

TOLMAN LAND LIME

Lime benefits the soil in the following ways: Sweetens sour soil; mellows heavy and clayey soils; makes available certain valuable potash compounds otherwise lost; increases the capacity of the lighter soils to retain moisture; makes phosphatic fertilizers more effective; makes organic matter decompose more rapidly and easily, thereby rendering the vital plant food contained more promptly available; combats organisms in the soil causing diseases among cabbages, cauliflower, turnips, beets and the like.

In order to make **Tolman Land Lime** easier and pleasanter to use it comes in a uniformly sand-grained size, coarse enough not to sift and blow about like pulverized lime and still sufficiently fine to promote ready absorption by the soil and work easily in spreaders.

Our lime accords with the latest recommendations of the various Agricultural Experiment Stations and it is safe, powerful, economical, uniform and, comfortable to handle. It comes packed in convenient, durable, cotton cloth sacks, one hundred pounds to the sack. Price: \$1.25 per 100 lbs.; \$16.00 ton.

BRECK'S RAM'S HEAD BRAND

PULVERIZED SHEEP MANURE—(Odorless)

A standard dressing for lawns and around private homes or cemeteries, on golf courses and wherever a strong, luxuriant growth of grass is needed. No time is lost waiting for Pulverized Sheep Manure to rot, as is the case with stable or barn-yard manure. No necessity for raking off refuse after an application of **Breck's Ram's Head Brand** or danger of tracking into the house, or making the lawn unsightly and evil smelling.

Apply **Breck's Ram's Head Brand** two or three times during the season before rain or watering at the rate of one pound or over to 30 square feet or less. This will keep the lawn or golf course in flourishing condition.

Breck's Ram's Head Brand is pure and unadulterated. We get it from sheep corrals where the animals have been kept under cover, hence it retains its full strength, and besides has been put through a mechanical drying and grinding process which destroys absolutely all weed seeds.

1-lb. packages	\$0.10	100-lb. bags	\$3.00
5-lb. packages35	1 ton	50.00
50-lb. bags	1.65		

PREMIER BRAND PULVERIZED POULTRY MANURE Nature's Best Plant Food

Prepared in much the same manner as the better grades of commercially prepared Pulverized Sheep Manure but is of much greater manurial value as shown by guaranteed analysis:

Nitrogen	4.10%
Equivalent to Ammonia	5%
Total Phosphoric Acid	2.70%
Available Phosphoric Acid	1.70%
Potash	1.30%

A Plant Food in the most available form, stimulates bacterial action in the soil, thereby making additional plant food available.

Recommended for Flower Beds, Lawns, Golf Courses, Fruits and Vegetables. No Noxious Weeds.

Per 1 lb. package, 10 cts.; 10-lb. package, 50 cts.; 50-lb. bag, \$2.00; 100-lb. bag, \$3.50; 1 ton, \$60.00.

HUMUS

Untreated, finely ground, dry Humus for renovating lawns, golf greens, improving pot soil, etc. Price: \$2.00 per 100 lb. bag; \$35.00 per ton.

SCOTCH SOOT

This is much used by florists and gardeners, both as a fertilizer and fungicide. Mixed with Flowers of Sulphur (two-thirds soot, one-third sulphur) there is nothing better to prevent and cure mildew. Used as a fertilizer either in the dry state or in liquid, it quickly promotes growth. Per bag of about 2 1/2 bu., \$7.00 per 100 lbs.

IMPORTED FERTILIZERS

CLAY'S FERTILIZER

A safe and reliable preparation. In great favor with successful gardeners in England. Prices: 1/8 cwt., 14 lbs., \$2.25; 1/4 cwt., 28 lbs., \$4.00; 1/2 cwt., 56 lbs., \$8.00; 1 cwt., 112 lbs., \$15.00.

THOMPSON'S VINE, PLANT, AND VEGETABLE MANURE

A safe and reliable food and stimulant for every fruit-bearing plant, also for foliage and flowering plants and vegetables of all descriptions. Prices: 14 lbs., \$2.25; 28 lbs., \$4.00; 56 lbs., \$8.00; 112 lbs., \$15.00.

THOMPSON'S SPECIAL CHRYSANTHEMUM MANURE

Entirely soluble and very powerful, especially suitable for top-dressing chrysanthemums and similar plants. It is meant to be used as an additional stimulant during the growing season. A heaping dessert-spoon-full will be sufficient for a 10-inch pot, sprinkled over the surface of the soil, and watered in with tepid water. This may be given three times during the growing season. Prices: 14 lbs., \$2.25; 28 lbs., \$4.00; 56 lbs., \$7.00.

STIM-U-PLANT**Plant Stimulant Tablet**

The better grades of commercial fertilizers do not contain more than 3 to 5 per cent of Nitrogen, 6 to 10 per cent Phosphoric Acid, and 3 to 5 per cent Potash; Stim-U-Plant contains a guaranteed analysis of 11 per cent Nitrogen, 12 per cent Phosphoric Acid, and 15 per cent of Potash. The fertilizer ingredients in commercial fertilizer are for the most part in a relatively slow acting form, while in Stim-U-plant they are water-soluble, which causes them to become immediately available to the plants.

Stim-U-Plant tablets are designed for use by all who grow plants—home gardeners, market gardeners, small-fruit growers, fruit growers, florists, and farmers. Their most valuable use is in feeding the growing plants. Being composed of water soluble materials of great feeding power and of known weight and percentage of plant food, Stim-U-Plant tablets can be used directly to the soil at the base of the plants to feed them definite amounts of available food. Once in the soil they immediately dissolve and mingle with the soil water, pass into the root-hairs and roots to begin feeding the plants. No matter how fertile the soil may be Stim-U-Plant is effective in feeding the crops because of its rich, available food content.

Stim-U-Plant tablets are packed in four sizes as follows: *Trial Size*, 15 cts.; *Small Size*, 25 cts.; 100 tablets, 75 cts.; 1000 tablets, \$3.50.

INSECTICIDES & FUNGICIDES**DRY LIME SULPHUR**

Safe and effective not only as a dormant spray but also as a Summer spray in combination with Arsenate of Lead.

From 12 to 14 pounds of Dry Powdered Lime Sulphur dissolved in 50 gallons of water should be used as a dormant spray against scale, etc.

From 2 to 3 pounds to 50 gallons of water in combination with the usual preparation of Dry Powdered Arsenate of Lead or Paste Arsenate of Lead should be used for Summer spraying on all seed fruits such as apples, pears, quinces, etc.

From 1 to 1½ pounds to 50 gallons of water in combination with the usual strength of Arsenate of Lead should be used for Summer spraying of peaches, plums and all stone fruits.

1-lb. packages.....each, \$0.30 25-lb. packages, per lb., \$0.16
5-lb. packages.....per lb., .25 100-lb. kegs.....per lb., .14
10-lb. packages.....per lb.,.20

"NICO-FUME" PAPER

Is especially effective against Aphids ("Green Fly" and "Black Fly") and against all insects affected by tobacco. "Nico-Fume" is packed in special friction-top tins and is sold as follows:

24 sheets.....\$1.25 288 sheets.....\$10.00
144 sheets.....5.50

"NICO-FUME" LIQUID

¼-lb. can.....\$0.75 4-lb. can.....\$8.00
1-lb. can.....2.25 8-lb. can.....15.00

XL ALL LIQUID INSECTICIDE

Of English manufacture. A combination of oil, soda-soap and Nicotine. Used as a spray or dip for use against green and black flies, thrip, and for brown or white scale. Full directions for use on packages. *Prices*: 1 pint, \$1.50; 1 quart, \$3.00; ½ gallon, \$5.50; 1 gallon, \$10.00.

TOBACCO STEMS

For fumigating. If used as a mulch around sweet peas and other plants they prevent the destructive work of the wire and cut worms. 1 lb., 5 cts.; 30-lb. sack, \$1.25; 100-lb. sack, \$4.00.

INCH OR GRAPE BONE

This is unmanipulated bone, broken into pieces that vary in size from one-quarter to an inch. It is unsurpassed as a lasting fertilizer for grape vines, fruit trees, shrubs and trees of all kinds. It should be used liberally in grape vine borders and when setting out vines and fruit trees. Mix with soil to a depth of one foot or more. *Prices*: 100 lbs., \$4.00; per ton, \$65.00.

AGRICULTURAL CHEMICALS

Basic Slag. 16% Acid Phosphate. Per 100 lbs., \$2.50; Per ton, \$45.00.

Plain Superphosphate or Acid Phosphate, 16%. Per 100 lbs., \$2.00; Per ton, \$35.00.

Nitrate of Soda, 18.23% ammo. Per lb., 10 cts.; per 10 lbs., 60 cts.; per 100 lbs., \$5.00.

Muriate of Potash (48% K₂O.) Per 100 lbs., \$3.75; per ton, \$68.00.

Kainite (12.40% K₂O.) Per 100 lbs., \$1.25; per ton, \$18.00.

Sulphate of Ammonia, 24.50% ammo. Per lb., 10 cts.; per 10 lbs., 75 cts.; per 100 lbs., \$6.00.

Ground Tankage, 6% ammo., 30% bone phos. Per 100 lbs., \$2.75; per ton, \$49.00.

Ground Tankage, 9% ammo., 20% bone phos. Per 100 lbs., \$3.50; per ton, \$63.00.

Ground Untreated Phosphate Rock, 31.12% total phos. acid, 68% bone phos. Per 100 lbs., \$1.75; per ton, \$20.00.

Fine Ground Land Plaster. Per bag, \$1.25; per ton, \$20.00.

"SUPERFYNE" TOBACCO DUST

A high-grade Tobacco Dust of Special Manufacture. Finely pulverized, uniform of texture, for dusting on plants or for fumigating. Packed in paper-lined burlap sacks. Guaranteed to contain not less than 1% Nicotene by weight, dry basis. *Prices*: 1 lb., 10 cts.; 25 lbs., \$1.75; 100 lbs., \$6.00.

SULPHO TOBACCO SOAP

A superior insecticide and fertilizer. Non-injurious to the tenderest growth. Kills all insect life in the window-garden. Unsurpassed for rose bushes. For domestic purposes it is valuable as an exterminator of Moths, Cockroaches, Carpet Bugs, and is a superior wash for dogs and all animals. Every insect will succumb to this insecticide.

3-oz. cake.....\$0.10 8-oz. cake.....\$0.20

APHIS PUNK

Fumigating paper saturated with Nikoteen for controlling thrip and aphid in greenhouses and conservatories.

Package contains 12 rolls of paper.....each, \$1.00

"BLACK LEAF 40"

A concentrated solution of Nicotine sulphate. Active ingredient, Nicotine 40%. For spraying fruit trees to destroy soft-bodied sucking insects. Each sucking insect must be "hit" by spray to be affected. Use against Green and Rosy Apple Aphid, Pear Psylla, Hop Louse, Black Aphid, Woolly Aphid. Full directions for all uses attached to every can.

1-oz. bottle.....\$0.35 2-lb. can.....\$ 3.50
½-lb. can.....1.25 10-lb. can.....13.50

LOTOL

The New Contact Insecticide against soft bodied Insects. In jelly form—no fuss, no muss. Comes in a collapsible tube. One teaspoonful makes a gallon. Contains the necessary soap to make it stick.

Prices: 1-oz. tube, 35 cts.; 3-oz. tube, 75 cts.; half-lb. can, \$1.25; 1-lb. can, \$2.25; 5-lb. can, \$9.00; 10-lb. can, \$15.00. *Postage, or Express at Purchaser's Expense. The 1 ounce tube sent post-paid for 45 cts.*

SCALECIDE (WITH FUNGICIDE)

A reliable simple and economical spray for San Jose Scale, Brown Scale, Red Scale, Cottony Maple Scale, Pear Pyslla, Rust Mite, White Fly, and many other scale and soft bodied sucking insects. Scalecide is not an emulsion, but a soluble miscible oil that mixes instantly with cold water and stays mixed. We believe it to be more effective than any other soap or oil emulsion, and if used as directed will not injure the trees. Spray thoroughly or not at all, using finest nozzle. Fogging is better than drenching. Full directions for use accompany each package.

Quart cans	\$0.60	30-gal. cans	\$28.00
1-gal. cans	1.45	50-gal. cans	39.50
5-gal. cans	6.45		

CREOSOTE MIXTURE

This mixture is sure death to the eggs of the Gypsy Moth, Tussock Moth and similar insects. Made on the formula used for years and recommended by the Massachusetts Gypsy Moth Commission.

1-quart each,	\$0.45	5-gallon can per gal.,	\$0.85
1-gallon each,	1.10	50-gallon barrel, per gal.,	.75

FLYOSAN

A liquid to be used with sprayer, forming a gas that kills Flies, Mosquitoes, Moths, Fleas, etc., in the house. Also kills Flies on Horses and Cattle, Lice and Fleas on Cats, Dogs, Chickens and Hogs. *Non-poisonous and non-explosive.* Pint cans, 75 cts.; quart cans, \$1.25; per gallon, \$4.00; per 5 gallons, \$15.00.

FUNGINE

A valuable remedy for mildew, rust, bench rot and other fungi affecting flowers and vegetable plants.

½-pt. cans	\$0.40	1-qt. cans	\$1.00
1-pt. cans65	1-gal. cans	3.50

FISH OIL SOAP

This is for the destruction of San Jose scale and all sucking insects.

1-lb. packages	\$0.25	10-lb. packages	\$2.00
5-lb. packages	1.10	Per 100 lbs.	15.00

Special prices on kegs and casks

FLOWERS OF SULPHUR

Used to prevent and cure mildew on plants.

1-lb.	\$0.12	100 lbs.	\$8.00
---------------	--------	------------------	--------

ORIOLE BRAND NORTH CAROLINA PINE TAR

Strictly pure old-process North Carolina Tar in cans; useful for protecting cut surfaces of pruned trees, also broken and bruised places in the bark of trees and shrubs.

In gallon cans only each, \$0.75

LEMON OIL

An oil that is readily soluble in water. It destroys insects and parasites of all kinds without injury to plants. Much used for palms and other ornamental foliage plants.

1 pint	\$0.60	1 gallon	\$3.00
1 quart	1.00		

SULCO-VB

Recommended for a Fall spray after trees are dormant, against scale, pear psylla, fungus spores. Keeps the trees healthy, resulting in better fruit. Special spraying catalogue sent on request.

Prices: quart cans, 65 cts.; 1-gal. cans, \$2.00; 5-gal. cans, \$8.50.

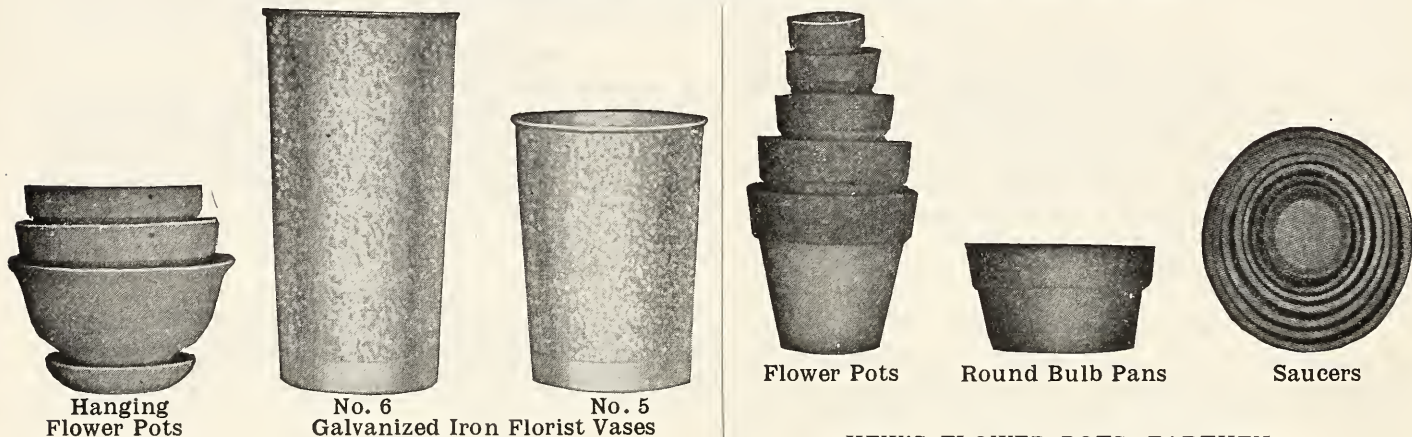
PARACIDE

(A Trade Name for Para-Dichlor-Benzene)

A remedy against Peach Tree Borer and for Peach Trees only. A dry powder to be placed in a circle about two inches from the trunk, then covered with dirt. The only safe way. Fall application best. Full directions for use with each package. Sold in 1-pound packages only. Price: 60 cts. per pound.

BULB and FLOWER POTS · SAUCERS and SEED PANS

Inside Measurement, width and depth equal. Carriage and Packing charged extra. All prices subject to change without notice.



HANGING FLOWER POTS, EARTHEN

Size	Each	Per Doz.
7 in.	\$0.45	\$4.50
8 in.50	5.10
9 in.55	5.70
10 in.	1.25	12.75
12 in.	1.50	16.50

GALVANIZED IRON FLORIST VASES

Strong, light, durable, made of good material with heavy hoop at base of can to reinforce bottom of vase. Only plain galvanized iron carried in stock; painted green or any color to order.

No.	Top Diam.	Bottom Diam.	Height.	Each.	Doz.
5	7¾ in.	5½ in.	11 in.	\$0.95	\$10.55
6	7¾ in.	5½ in.	17 in.	1.15	12.15
7	8¼ in.	6¼ in.	11 in.	1.00	10.65
8	9 in.	7¾ in.	12 in.	1.25	12.40
9	9 in.	7¾ in.	17 in.	1.50	17.40

HEW'S FLOWER POTS, EARTHEN

Height and Diameter are the same

Diameter in Inches	Each	Doz.	Per 100	Diameter in Inches	Each	Doz.	Per 100
3	\$0.04	\$0.35	\$ 2.50	10	\$0.60	\$6.50	\$50.00
405	.45	3.75	12	1.25	13.00	100.00
509	.85	6.80	13	1.30		
612	1.25	10.00	14	1.70		
718	2.10	17.00	15	2.65		
830	3.25	24.50	16	3.75		
940	4.25	38.00	18	5.65		

ROUND BULB OR SEED PANS, EARTHEN

Diameter in Inches	Each	Doz.	Per 100	Diameter in Inches	Each	Doz.	Per 100
6	\$0.12	\$1.30	\$10.00	12	\$1.25	\$14.00	\$104.00
835	3.25	24.50	14	1.75	20.00	
1060	6.50	50.00				

SHALLOW BULB AND FERN PANS, EARTHEN

Size	Each	Per Doz.	Size	Each	Per Doz.
4 × 1 7/8 in.	\$.07	\$.70	7 × 2 5/8 in.	\$.15	\$1.60
4 3/4 × 2 1/8 in.	.09	.95	7 × 3 1/8 in.	.20	2.30
5 1/2 × 2 1/4 in.	.12	1.20	9 × 3 1/4 in.	.25	2.80
6 1/4 × 2 1/2 in.	.14	1.35	10 × 4 in.	.30	3.15

SAUCERS, EARTHEN

Diameter in Inches			Per Doz.	Diameter in Inches			Per Doz.
3	\$.04	\$.35	\$2.25	12	\$.30	\$3.25	\$25.00
4	.05	.40	2.80	13	.40	4.25	35.00
5	.06	.50	3.75	14	.45	5.00	40.00
6	.09	1.00	7.50	15	.55	6.50	50.00
8	.12	1.30	10.30	16	.85	9.50	75.00
9	.16	1.80	14.00	18	1.10	12.00	95.00
10	.20	2.10	17.00				

NEPONSET PAPER POTS

Diameter	Doz.	100	1000	Diameter	Doz.	100	1000
2 1/4 in.	\$.10	\$.55	\$4.50	4 in.	\$.25	\$1.50	\$12.30
2 1/2 in.	.12	.65	5.25	5 in.	.35	2.25	19.15
3 in.	.15	1.10	7.15	6 in.	.45	3.00	25.65
3 1/2 in.	.20	1.25	9.80				

Not less than one thousand at thousand rate

FIBRE SAUCERS WITHOUT CASTORS

Made from Indurated Fibre Ware, prevents moisture passing through to injure table, floor, or carpet.

The number indicates approximately the diameter in inches

No.	Each	Doz.	No.	Each	Doz.
5 Saucers	\$.48	\$5.20	12 Saucers	\$.80	\$8.60
6 Saucers	.50	5.50	14 Saucers	1.05	11.20
7 Saucers	.55	6.00	16 Saucers	1.80	19.80
8 Saucers	.60	6.50	18 Saucers	2.10	23.00
9 Saucers	.65	7.00	20 Saucers	2.95	32.00
10 Saucers	.72	7.80			

BRASS JACK CHAINS

For Hanging Pots, No. 118, 3 strand, each 25 cts.; No. 119, 4 strand, each 30 cts.

CEDAR PLANT TUBS

For growing Agaves, Century, and other large plants. Made of the best red cedar, painted green, iron handles.

Outside			Each	Outside			Each
No.	Top Diam.	Height		No.	Top Diam.	Height	
1	28	22	\$14.85	8	16	13	\$3.10
2	26	20	12.40	9	14	12	2.55
3	24	18 1/2	7.75	10	12	9 1/2	1.90
4	22	17	6.30	11	10 1/2	9	1.70
5	20	16	5.30	12	9 1/2	8	1.35
6	18 1/2	15	4.10	13	8	7	1.20
7	17	14	3.65				

SCOLLAY'S RUBBER SPRINKLERS

A most useful article for showering plants, sprinkling bouquets, dampening clothes, etc. Prices: \$1.00 and \$1.25 each.

STRAW MATS FOR HOT BEDS

6 × 6 ft.	Each, \$3.00
3 × 6 ft.	“ 1.75

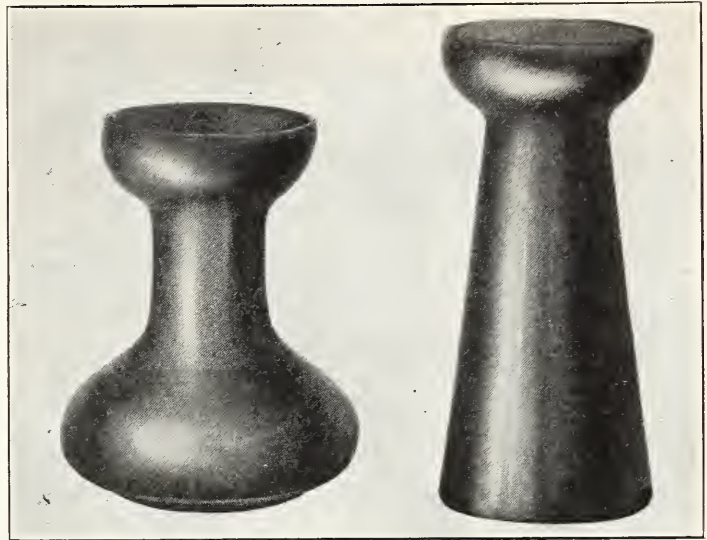
Other sizes to order.

BRECK'S EXTRA HEAVY HOTBED MATS

Weight about 11 lbs. Dimensions about 76 inches by 76 inches. Heavily quilted, heavy Burlap both sides. Best made mat procurable. Each, \$3.25; per doz., \$36.00.

PROTECTING CLOTH FOR HOTBEDS

Used as a substitute for glass for protecting plants in early Spring. Per yard, 22 cts.; per piece of 60 yards, 20 cts. per yard.



BRECK'S HYACINTH GLASSES, TALL OR TYE SHAPE

Colors: Amber, Blue, Green, Crystal

Price: 35 cts. each; \$3.00 doz.

GLAZING POINTS

The Peerless

The only durable and reliable points. Made of galvanized steel wire, no rights and lefts. No raising up when driving. Two sizes: Nos. 2, 2 1/2 for general use. Per box of 1,000 65 cts. Pincers for driving the points, 50 cts. each.

Zinc City Greenhouse Points

A heavy zinc Brad, 3/4" and 7/8". Per lb., 65 cts.

PUTTIUM

Color Gray. A glazing cement you can buy with confidence. Composed of non-volatile oils, heat resisting gums and other pigments, combined with asbestos fibre; especially recommended for bedding glass.

Per barrel of 60 gallons	\$110.00
Per barrel of 38 gallons	70.30
Per can of 20 gallons	39.00
Per can of 10 gallons	20.00
Per can of 5 gallons	10.50
Per can of 1 gallon	2.30

MASTICA

For glazing greenhouses, new or old. The use of Mastica avoids the necessity of frequent reglazing. It can be used to bed in or on the outside, with a machine; one gallon will cover about 290 running feet (one side).

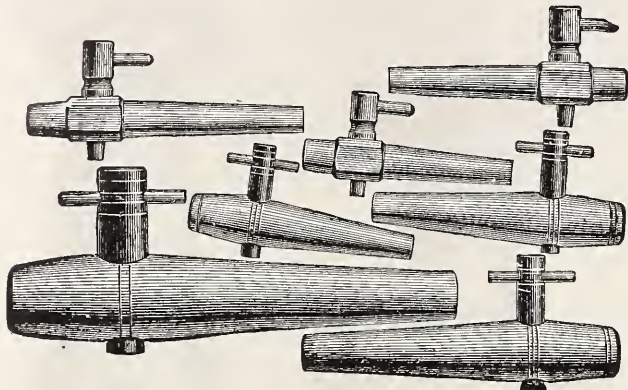
Gallon cans	Each, \$2.50
Machines for applying Mastica	Each, 2.75

Breck's Poultry Supplies

We supply everything needed for poultry raising: Baby Chicks, Chick food and remedies, Incubators, Brooders, Feeders, Egg Boxes, Poultry Crates, etc.

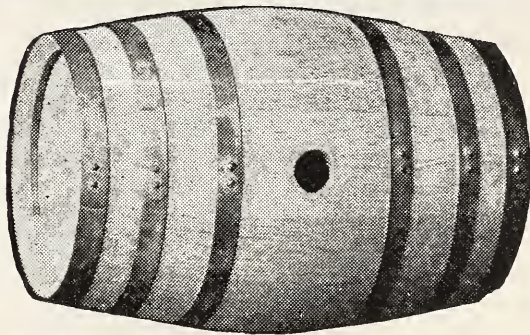
Send for our Poultry Catalogue

FAUCETS



OAK KEGS

Well made from selected oak stock. Iron hoops. Varnished. Can be used many seasons



FAUCETS

CORK LINED

Size	Each	Size	Each
No. 0. 6".....	\$0.10	No. 6. 9".....	\$0.15
No. 2. 7".....	.10	No. 8. 10".....	.20
No. 4. 8".....	.15		

LEATHER LINED, PLAIN

Size	Each	Size	Each
6".....	\$0.10	9".....	\$0.20
7".....	.15	10".....	.20
8".....	.15	11".....	.35

LEATHER LINED, OILED

Size	Each	Size	Each
6".....	\$0.15	8".....	\$0.15
7".....	.15	9".....	.20

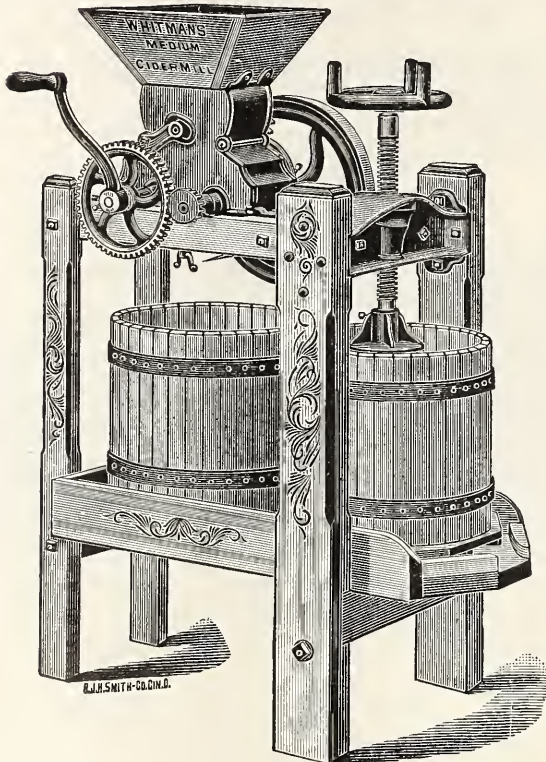
EAGLE METAL KEY

Size	Each	Size	Each
6".....	\$0.20	8".....	\$0.25
7".....	.25	9".....	.30

If wanted by Parcel Post, add 5 cts. each.

OAK KEGS

Capacity	Net Price each	Capacity	Net Price each
1 gal.....	\$2.20	15 gal.....	\$3.60
2 gal.....	2.20	20 gal.....	4.00
3 gal.....	2.30	25 gal.....	4.60
5 gal.....	2.40	50 gal.....	4.90
10 gal.....	3.20	30 gal.....	7.75



FRUIT CRUSHER

Lily Brand

Especially for crushing Grapes

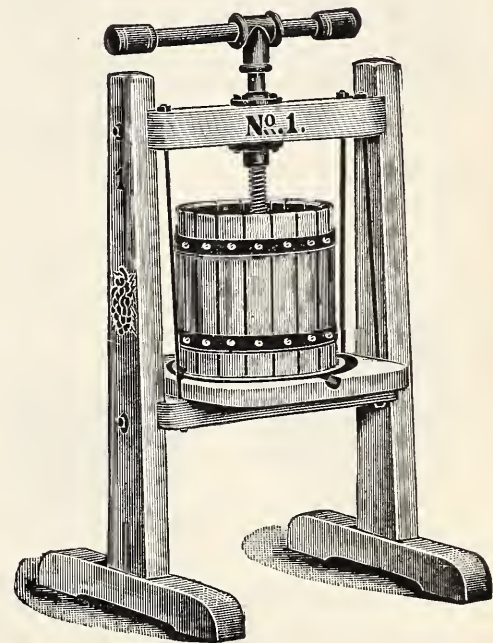
Aluminum and Galvanized Steel

Rust Proof

Net Price \$12.00

Clamps for Barrels

\$1.00 extra



NET PRICES RED CROSS FRUIT PRESSES

No. 1. Tub 12" dia. x 10".	Screw 1 1/8" x 18 3/4".	Plain Tub.....	\$16.00
No. 2. Tub 14" dia. x 12".	Screw 1 1/2" x 20 1/2".	Plain Tub....	20.00
No. 3. Tub 17" dia. x 14".	Screw 2" x 23 1/2".	Hinged Tub..	30.00
No. 5. Tub 21" dia. x 18".	Screw 2" x 28 1/2"	Hinged Tub ..	45.00

NET PRICES RED CROSS CIDER MILLS

Self Feed. 1 tub, 14" dia., 12" high.	Screw 1 1/8" x 24 1/2".	Capacity 1 to 2 barrels cider daily.....	Each, \$25.00
Junior. 2 tubs, 12" dia., 10" high.	Screw 1 1/8" x 18 3/4".	Capacity 2 to 4 barrels cider daily.....	Each, 30.00
Medium. 2 tubs, 14" dia., 12" high.	Screw 1 1/2" x 20 1/2".	Capacity 3 to 6 barrels cider daily.....	Each, 40.00
Senior. 2 tubs, 17" dia., 14" high.	Screw 2" x 23 1/2".	Capacity 6 to 12 barrels cider daily.....	Each, 60.00

The Junior, Medium, and Senior Mills arranged to be used by hand or power.

JUICY FRUIT PRESSES

A wonderful press for Fruits, Grapes, Lard, Jellies, etc. Large capacity.

Special Feature: All parts coming in contact with the Fruit Juices are tinned with Pure Block Tin.

No. 1. Capacity 1 1/2 gallons, 18 lbs.	Each, \$6.00	No. 2. Capacity 3 gallons, 36 lbs.	Each, 9.00
---	--------------	---	------------

Breck's Lawn Grass Seed



Lawn on the Estate of Henry G. Lapham, Esq., Brookline, Mass.

JOSEPH BRECK & SONS, BOSTON, MASS.

Brookline, Mass., July 20, 1923

Dear Sirs: The lawns on this Estate were originally laid down with Breck's Lawn Grass Mixtures and we have used them exclusively ever since. The results attained have given us the utmost satisfaction. *Very truly yours*

(Signed) R. BARKHOUSE, Superintendent for Henry G. Lapham, Esq.

We have given much thought and made many experiments in order to ascertain just what are the best mixtures for permanent lawns, and the grasses which are best suited to this climate. By the proper blending of the varieties which constitute Breck's Lawn Grass, we have obtained mixtures that from early Spring to late Autumn will give to lawns made with them that rich, deep green so often admired upon the lawns and parks of England, but so seldom seen in this country.

BRECK'S "BOSTON PARK" LAWN GRASS SEED

A superior mixture of grasses and clover as supplied by us to the City of Boston Park Commissioners for sowing on the Franklin and other parks administered by them.

Per pound.....	\$0.50
Per peck, 8 pounds.....	3.75
Per bushel, 32 pounds.....	14.00

Two bushels will sow one acre.

BRECK'S "STANDARD" LAWN GRASS SEED

One quart will sow 300 sq. ft. per quart,	\$0.30
Two quarts will sow 600 sq. ft. per 2 quarts,	.55
One half-peck will sow 1,200 sq. ft. per half peck,	1.00
One peck will sow 2,400 sq. ft. per peck,	1.75
One Bushel will sow 10,000 sq. ft. per bushel,	6.50

Four bushels will sow one acre.

BRECK'S "SHADY SPOT" LAWN GRASS SEED

This mixture of grasses naturally adapted to growth under trees and in places where the sun does not readily penetrate. If sown in such locations, in place of ordinary Lawn Seed, bare and unsightly spots may be prevented.

Per quart.....	\$0.35
Per two quarts.....	.65
Per one-half peck.....	1.00
Per peck.....	1.75
Per bushel.....	6.50

WASHINGTON PRESS, BOSTON, MASS.

BRECK'S "BANK AND TERRACE" GRASS MIXTURE

A mixture of deep-rooting grasses especially prepared for embankments and situations where it is impractical to get a successful catch of the less-spreading-rooted sorts. It produces a rich velvety turf throughout the season. No coarse-growing varieties are used in this mixture.

Per quart.....	\$0.35
Per two quarts.....	.65
Per one half-peck.....	1.00
Per peck.....	1.75
Per bushel.....	6.50

PERMANENT GRASS SEED FOR GOLF LINKS

The largest and best golf clubs in this section of the country are using our Golf Mixtures with splendid results.

No. 1. For Putting Greens. This mixture should be sown at the rate of 80 lbs. per acre.

Per lb. 85c.; Per 100 lbs. \$75.00.

No. 2. For Fair Greens upon light and dry soils.

Per lb. 65c.; Per 100 lbs. \$60.00.

No. 3. For Fair Greens upon low and damp soils.

Per lb. 35c.; per 100 lbs. \$30.00.

Mixtures Nos. 2 and 3 should be sown at the rate of 50 pounds per acre.

Visit BLOEMGAARD *the*
Dutch Flower-garden at our Lexington Nurseries
An interesting spot—worth *seeing*

In the Spring Dutch Bulbs will be exhibited in bloom so that patrons may select varieties for their future guidance. During the Summer and early Autumn "Bloemgaard" is brilliant with flowers in profusion. A good objective for the afternoon ride.

On Massachusetts Avenue at Munroes Station, Lexington
Ten miles from Boston. Good roads from all directions

When you visit Bloemgaard you may select your trees and shrubs for Fall planting



Breck-Robinson Nursery Company
Lexington, Mass.