

PRIVATE COLLECTION

OF

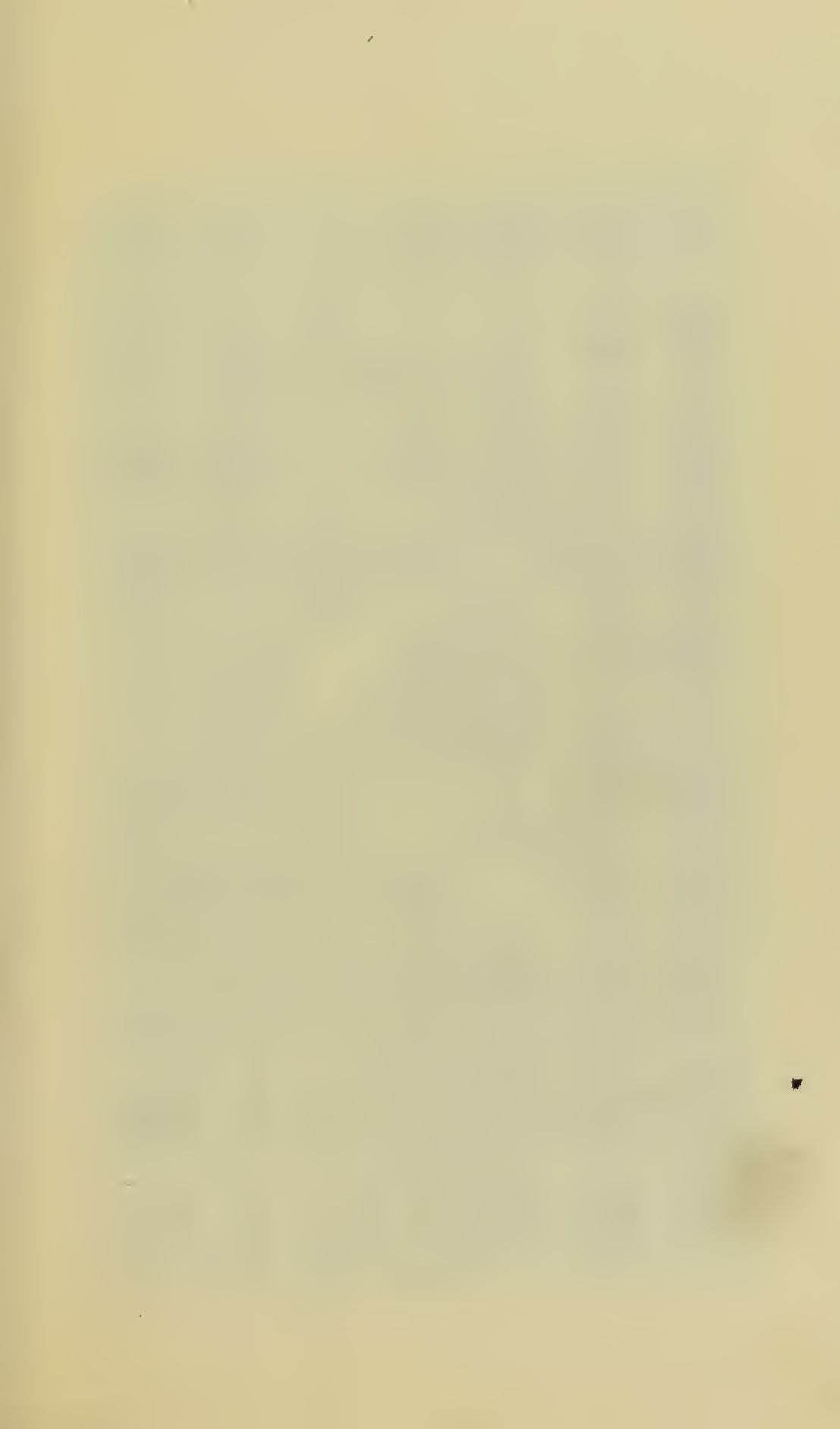
ANTIQUES.

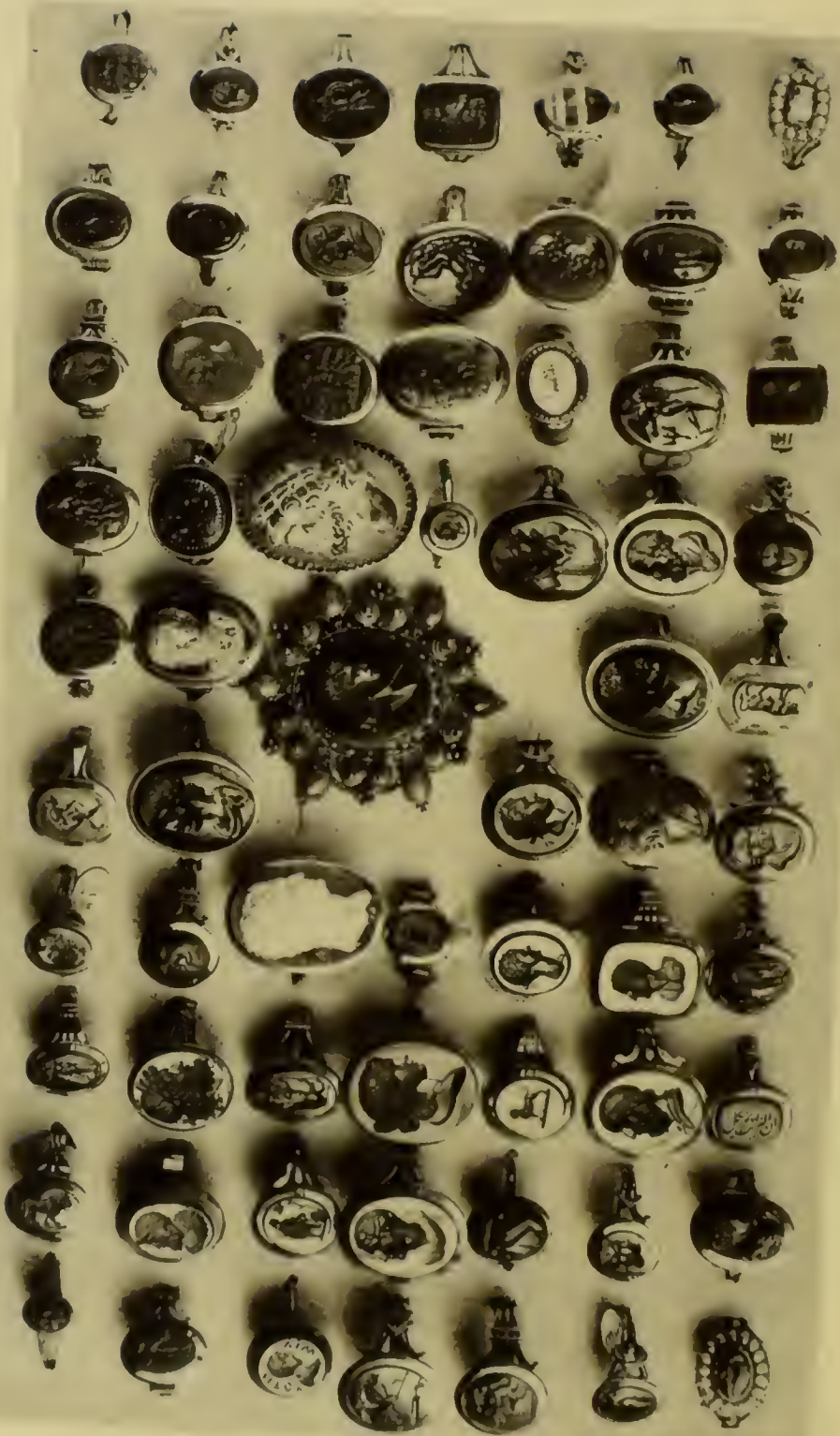
Thursday, Friday and Saturday Evenings,

MAY 15th, 16th and 17th, at 7½ o'clock.

The Messrs. LEAVITT, Auctioneers.







# CATALOGUE

OF A PRIVATE

## CABINET OF ANTIQUES, Etc., Etc.

*COLLECTED IN EUROPE BY A GENTLEMAN NOW  
RESIDING IN THIS CITY,*

COMPRISING

JEWELRY,

Stone Cameos and Intaglios,  
Mounted and Unmounted.

Relics from Churches and Convents,  
Purchased in Rome.

Armor and Oil Paintings.

Miniatures and Paintings on Ivory and Enamels on  
Copper.

Coins, Bronzes and Medals,

Carvings in Wood, Engravings, Shell Cameos and  
Sculpture in Lava, Coral and Conchilia.

Mosaics, Pottery and Snuff Boxes.

Water-Color Paintings and Engravings on Copper.

---

TO BE SOLD BY AUCTION ON THE EVENINGS OF

*THURSDAY, FRIDAY and SATURDAY,*

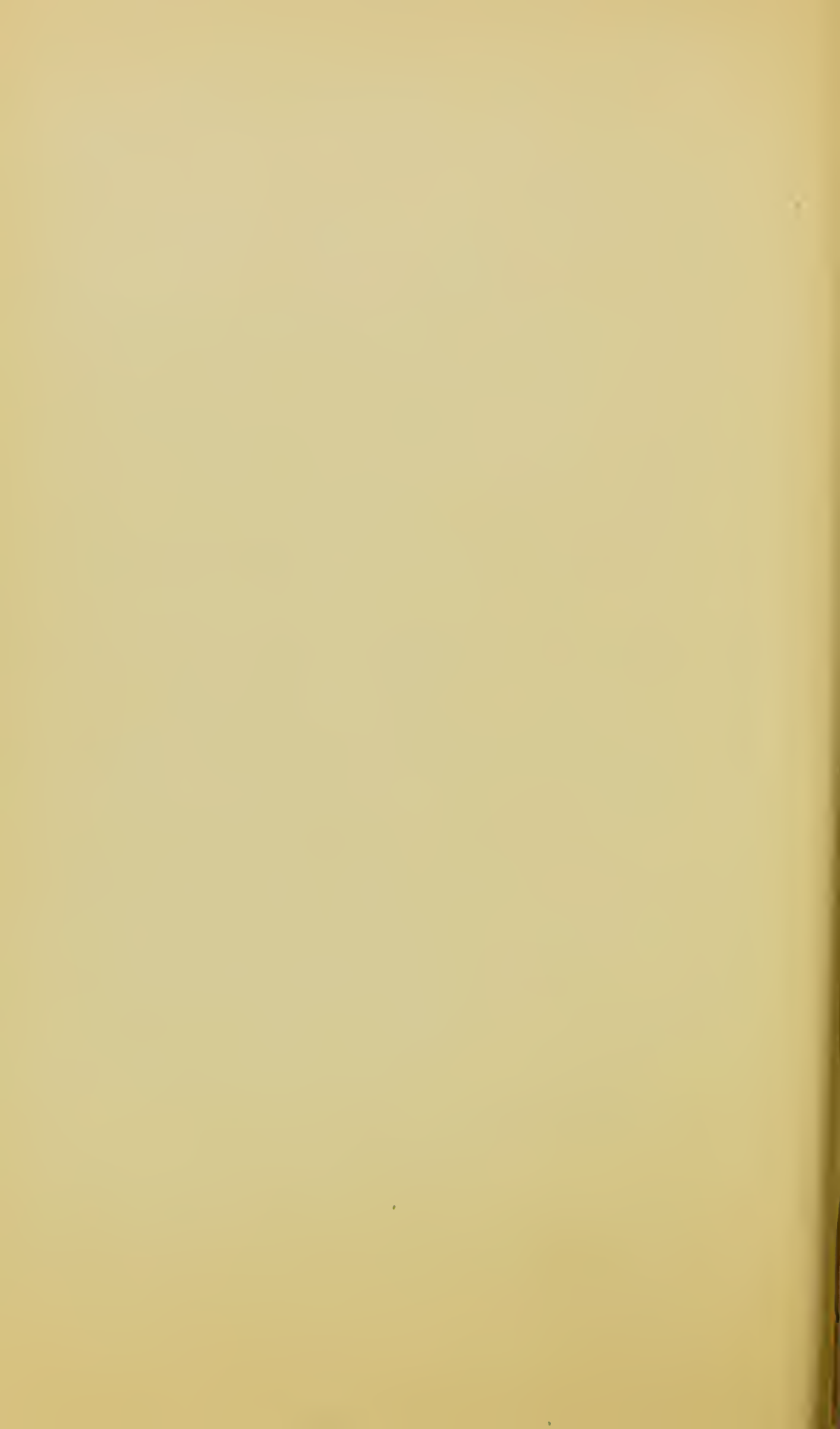
MAY 15th, 16th, & 17th, commencing at 7½ o'clock each Evening,

AT THE

***Clinton Hall Sale Rooms.***

*The Messrs. LEAVITT, Auctioneers.*

The EXHIBITION of the Collection will be at the Sale Rooms, beginning on Monday, the 12th of May, and continuing—during the Day and Evening—until the end of the sale.



## P R E F A C E.

In our preface to this Catalogue, we would say that the departments in the Cabinet of Antiques, rank, in prominence, in the following order:—

Stone Cameos and Intaglios, mounted and unmounted as  
Jewelry.

Relics from Churches and Convents, purchased in Rome.

Armor.

Oil Paintings.

Miniatures and Paintings on Ivory.

Enamels on Copper.

Coins, Bronzes, and Medals.

Carvings in Wood.

Engravings.

Shell Cameos.

Sculpture in Lava, Coral, and Conchilia.

Mosaics.

Pottery.

Snuff-boxes.

Water Color Paintings, and

Engravings on Copper.

### Stone Cameos and Intaglios.

These form, probably, the largest Collection that has ever been seen in this country—a large portion are specimens of Etruscan work; many of which, probably, date back to the early days of Etruria, 1000 B.C.; and for their preservation we are principally indebted to the ancient custom of decorating the gods with gems, as well as burying the ornaments of patricians with the remains of their former owners—showing that the profound reverence in which they were held quite equals that of the present day.

It is gratifying to see a growing taste in this country for this class of Antiques. The countries in Europe have always vied with each other in their desire to secure every Antique gem, as quickly as it has been unearthed. England has, so far, carried off the palm, as their public cabinets and those of private gentlemen indicate; and we now see a similar spirit being rapidly aroused in our country, especially as evinced in the noble enterprise of one of our most prominent citizens, of securing

from foreign clutches the invaluable "Cesnola" collection; and we hope that, when this great Cabinet shall have been opened to the public, it will accomplish much toward awakening a taste which we trust exists with us, if but in a dormant state.

In the Cabinet which this Catalogue represents, are upwards of one thousand (1,000) engraved stones, one half of which are Etruscan, Greek, Roman, Persian, and Egyptian. Many are of the "de Medici" period, and can easily be distinguished by the fine and graceful lines in their engravings; while those engraved with crests, mottoes, and letters, are mostly of the last and of the present centuries.

Among the Mediæval specimens, will be found many of a religious character, as Madonnas, Saints, Popes, etc., a portion of which have, undoubtedly, been worn by those in high orders in the Roman Church.

### Jewelry.

The Jewelry consists of about three hundred pieces, mostly rings; with many Seals, Buttons, Brooches, etc. About two hundred of the finest Cameos and Intaglios—Antique, Mediæval, and a few Modern—have been selected, and heavily mounted, as Rings and Sleeve Buttons, in new and original classical designs of the finest workmanship—all being eighteen-carat solid red gold. The quality of the gold, in the old mountings, ranges from fourteen to twenty carats; many of these latter pieces are of the old style of mounting, the Antiques being set with borders of Pearls, Amethysts, Jets, etc.

### Plate of the Rings.

The plate is a *photo-lithograph* of a few Rings, but is so indistinct and blurred as to serve only in giving a faint idea of the outlines of the engravings of the stones. Mr. Rockwood, photographer, in Broadway, can furnish photographs from which this plate was made, giving a much more distinct idea of the designs. His price, we believe, is fifty cents. The plate represents the rings one-third of their original size. One-third of them are Cameos and two-thirds Intaglios.

### Relics from Convents, purchased in Rome.

In making this collection of Sacred Relics, the owner had the good fortune to be in Italy during the suppression of the Convents by Victor Emanuel, and availed himself of an opportunity, which may never again occur, of purchasing a portion of the articles, which were being speedily taken up by Collectors, and have since been withdrawn from the market, and are now rare and valuable. Among these are specimens of very fine Carving in ivory and wooden Crucifixes, which, with those in bronze, together with the ebony crosses inlaid with ivory and pearl, are mostly of



the Byzantine period and workmanship. There are also Reliquaries,— Pictures in Silk Embroidery,—Old Carvings from Panels of Churches and Monasteries, Holy-Water Basins in ancient Enameled Pottery; Paintings on Canvas, Wood, Ivory, Copper and Glass—being examples of the Pre-Raphaelite period, down to the Seventeenth Century. There are also numerous other Articles of Devotion.

The Miniatures on Ivory and Enamel of a Sacred nature, as well as the Paintings on Parchment, will be found in the Catalogue under their respective heads.

### Armor.

The Collection of Armor is quite extensive; comprising examples from nearly every country in Europe. The English specimens embrace the period between the reigns of Elizabeth and Cromwell. The variety includes Fire-Arms, Swords, Rapiers, Foils, Daggers, Helmets, Breast and Back Plates, Gauntlet and Arm Pieces, and Spurs, one of which is of sterling silver.

### Oil Paintings.

The Paintings consist of over one hundred pieces, and are mostly Originals of Mediæval work, while many are of the Pre-Raphaelite and Byzantine schools. Many, also, are Sacred subjects taken from old Churches and Convents.

### Ivory Miniatures.

The Miniatures on Ivory consist of about one hundred pieces, and are mostly likenesses of Celebrities of the last and present centuries, and a few of private individuals—and many of Sacred subjects, as Madonnas, Popes, Saints, etc.; which latter, together with copies of Sybil, etc., from Guercino and other artists, are Mediæval. There are also some little gems by the school of Perugino, some mounted in silver, and others taken from their mountings—mostly Sacred subjects, and once worn by the Sisters and Brotherhood of the Convents and Monasteries.

### Enamels on Copper.

These, like the Ivory miniatures, are partly likenesses of celebrated people; but a large proportion of them also are sacred subjects; some are of the Byzantine period. Most of them are exceedingly fine and also very valuable, since so much risk attends the baking process through which they pass before completion, that, on the average, four are ruined whilst one is perfected. Among the Enamel Watches are two worthy of particular attention, one being enclosed in a spherical 18-carat gold case, enameled and very unique, being the work of the last century, but not in running order; and another of more recent date, also in a heavy 18-carat case, and most exquisitely enameled, and in perfect order.

## Coins, Bronzes and Medals.

The Coins, Medals, and Bronzes consist of several hundred pieces, and are mostly examples of the Early Roman, Greek, and Egyptian, together with a few Mediæval specimens of medals of Popes, Cardinals, etc., also a few bronze ornaments of more recent date.

## Carvings in Wood, and Antique Chests.

The Carvings in Wood consist of Grotesque and Religious subjects, being the work of the Thirteenth, Fourteenth and Fifteenth centuries, and were formerly panels and ornaments in convents and palaces. The two Chests are of the Fifteenth century; one is Austrian and the other Italian, and are elaborately carved.

## Engravings.

Among the Engravings are a few by Raphael Morghen, and other old engravers; also some very fine old colored specimens, mostly classical; and many others that are very old, but not so fine.

## Shell Cameos.

The Shell Cameos are examples of the "de Medici" period down to the present day, embracing Classical and Religious subjects, and were collected in Rome and in Naples.

## Sculpture in Lava, Coral, and Conchilia.

Among the specimens under this head, will be found some indicating great age; but the finest are heads of various animals, mostly of Dogs, and made to order for the owner, as specimens of Roman and Neapolitan work. A few of these have been mounted on shell, as Scarf Rings. Every shade of Lava, from the white to the dark brown, is represented.

## Mosaics.

The Mosaics give illustrations of Byzantine workmanship down to that of the present day, including some very fine Ancient Roman work, as well as Ancient and Modern Florentine.

## Pottery.

The Pottery consists mostly of Vases, Dishes, etc., of the Etruscan age, and none of a later date than the Middle Ages.

### Snuff Boxes.

The Snuff Boxes are specimens of the work of the last three centuries, made of Ivory, Shell, Carved Wood, Horn, Papier-Maché, etc., with covers differently ornamented, with Roman Mosaic, with Miniatures on Ivory or Parchment, with inlaid Work, Paintings, etc.

### Paintings in Water-colors and Gouache.

Of these there is quite a variety, from the Pre-Raphaelite, to the Modern, both on parchment and paper. Those in Gouache are Views on the Bay of Naples, made expressly for the owner. They are a new style of Water-Color, the paints being so mixed as to produce the Italian atmospheric effect much more faithfully than can be done by simple Water-Colors.

### Engravings on Copper.

These, although placed last in this Preface, are particularly worthy of attention; there being about sixteen pieces of heavy copper, of sizes varying from twenty inches in length, to those of ten inches. They are, many of them, the works of the old Engravers, to the admirers of whom they furnish particularly fascinating souvenirs.

The subjects are various, both Sacred and otherwise; among the latter are two especially fine: the first being Titian's "Venus," the other "Napoleon I. being blessed by Pope Pius VII." In the latter are twenty-seven portrait figures, mostly of the suite of Napoleon. There are also several plates engraved with fine views of Italian Cities and Ruins.

It was the owner's intention to have had these plates polished, and either framed, or inserted in panels, for interior decoration, producing, it is said, a very effective result.

## CONDITIONS OF SALE.

---

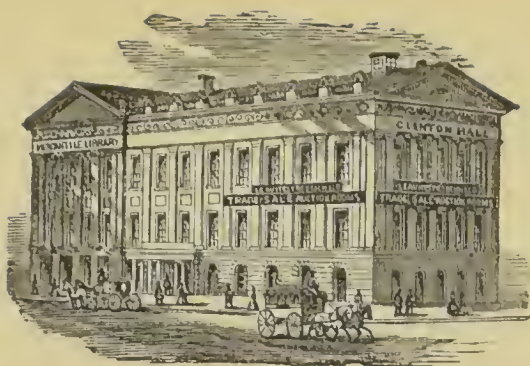
1. The highest Bidder to be the Buyer, and if any dispute arise between two or more Bidders, the Lot so in dispute shall be immediately put up again and re-sold.

2. The Purchasers to give their names and address, and to pay down twenty-five per cent on the dollar in part payment, or the whole of the Purchase-money *if required*, in default of which the Lot or Lots so purchased to be immediately put up again and re-sold.

3. The Lots to be taken away and paid for, with all faults and errors of description at the Buyer's expense and risk, within three days from the Sale.

4. To prevent inaccuracy in delivery and inconvenience in the settlement of the Purchases, no Lot can, on any account, be removed during the sale; and the remainder of the Purchase-money must absolutely be paid on the delivery.

5. Upon failure of complying with the above conditions, the money deposited in part of payment shall be forfeited; all Lots uncleared within the time aforesaid shall be re-sold by public or private Sale, and the deficiency, (if any,) attending such re-sale, shall be made good by the Defaulter at this Sale.



# CATALOGUE.

## Antique Coins and Medallions.

- 1 **Greek Bronze** of the Second size. Obv. head laureated and bearded, rev. horse running, patinated ; obv. head laureated, hair long and in curls ; rev. an eagle standing ; (struck by Ptolemy) ; obv. diademed head ; rev. a thunderbolt ; (Agathoeles) ; and third bronze of Ptolemy II., and the City of Chalcis. 5 pieces
- 2 **Greek Bronze** of the Third size. One of Hieron II. of Syracuse ; one of Macedonia ; one of Carthage ; and one of Antioch ; all patinated. 4 pieces
- 3 **Greek Bronze.** Small ; obv. winged head ; rev. three figures ; obv. head, front face ; rev. a bunch of grapes ; obv. head of Dido ; rev. horse and palm tree. 3 pieces
- 4 **Greek Bronze.** Second and Third size. 10 pieces.
- 5 **Roman Bronze.** Obv. head of Janus ; rev. a prow, thick ; another of the same type, thin ; obv. head ; rev. a prow S. Second size ; another, third ditto ; (the As and its half.) 4 pieces
- 6 **Roman Bronze.** Second size. Coins of AUGUSTUS, struck by Consular families ; one of AGRIPPA ; and one (very rare) of ANTONIA. 6 pieces

- 7 **Roman Bronze.** Large. Rev. a carpentum; rev. small bust, two fishes, heads to right and left below; rev. Hadrian standing giving his hand to a kneeling supplicant; all first size. 3 pieces
- 8 **Roman Bronze.** First size; Hadrian; Trajan; (rev. lists for games); M. Aurelius; Ant. Pius; and Faustina Sen. and Jr., wives of the two last-named Emperors; all large. 7 pieces
- 9 **Roman Bronze.** First size; Hadrian; Trajan; Ant. Pius, and others. 6 pieces
- 10 **Roman Bronze.** First size; Maximus; Maximinus; Gordianus Pius; and Alexander. 4 pieces
- 11 **Roman Bronze.** First size; Maximinus; Gordianus Pius; Alexander, etc. 7 pieces
- 12 **Roman Bronze.** Second size; Augustus and Agrippa; rev. crocodile chained to a palm tree.
- 13 **Roman Bronze.** Second size; Augustus; Tiberius; Nero; Claudius; Trajan; Titus; Domitian; Aurelius; Antoninus, and the two Faustinas. 11 pieces
- 14 **Roman Bronze.** Second size; Nero; Claudius Domitian; M. Aurelius; A. Pius, and Faustina. 6 pieces
- 15 **Roman Bronze.** Third size; M. Aurelius, and Faustina, Jr. 2 pieces
- 16 **Roman Bronze.** Third size; Crispina; Faustina, and two others. 4 pieces
- 17 **Roman Bronze** of a Late Period, beginning with Constantine, running through many families; patinated and sharp. 10 pieces
- 18 **Roman Bronze.** Similar to last. 10 pieces
- 19 **Roman Bronze.** First, second, and third size, of the Lower Empire—Justinus and Sophia, rev. large M; bust front face, rev. cross—Crowned head, rev. XX

- (gothic letters)—crowned bust, rev. large M.—crowned bust, rev. cross between two figures, and other interesting and highly preserved coins. 10 pieces
- 20 **Roman Bronze.** All small. 16 pieces
- 21 **Roman Bronze.** All sizes; some interesting varieties of the second brass of Augustus, and one of the Republic, with a head of Jupiter, and prow with a monster's head turned back; a few in billon. 25 pieces
- 22 **Roman Bronze.** Small; era of Constantine and successors. 10 pieces.
- 23 **Roman Bronze.** Small. Similar to last. 20 pieces
- 24 **Roman Bronze.** Small. Similar to last. 20 pieces
- 25 **Roman Bronze.** Small. Similar to last. 40 pieces
- 26 **Roman Bronze.** Small. Similar to last. 40 pieces
- 27 **Roman Bronze.** Small. Similar to last. 40 pieces
- 28 **Roman Bronze.** Large and Small. 61 pieces
- 29 **Antique Medallion.** Oval, with loop; obv. bare head, bust draped, rev. urn; struck on thick bronze in high relief; deep oval indentation on both sides; largest diameter  $1\frac{1}{2}$  inches—patinated and well preserved; fine.

### Old Seals, Medallions and Coins.

- 30 **Gothic Seal** Bronze, sitting figure; curious Mediæval work; makes a fine impression; original diameter  $2\frac{1}{2}$  inches.
- 31 **Gothic Seal.** Bronze; standing figure; same size.
- 32 **Gothic Seal.** Bronze; a tree in the circle; same size.
- 33 **Old Seal.** Bronze; oval; inscription in Latin; an eagle within the oval; one and a half by two inches.
- 34 **Medallion** without reverse; head of THEMISTOCLES; bronze; diameter 2 inches. Greek.

- 35 **Medallion** without reverse; head of ZENO; bronze; same size. Greek.
- 36 **Medallion.** Duplicate of 35.
- 37 **Medallion** without reverse; head of SIMMIAS (?) bronze. Greek; diameter 2 inches.
- 38 **Medallion.** Duplicate of 37.
- 39 **Medallion** without reverse; bust of CAROLUS VIII., REX FRANCORUM; bronze; diameter  $2\frac{1}{2}$  inches.
- 40 **Medallion.** Duplicate of 39.
- 41 **Medallion.** Obv. bust of FRANCISCUS FOSCARI DUX; rev. plain; bronze; diameter 2 inches.
- 42 **Medallions.** Oval; obv. female head; rev. incused; obv. male head diademed; bronze, from the Antique; average diameter 2 inches. 2 pieces
- 43 **Medallions.** Thin bronze, fine laureated heads of Vespasian and Vitellius; cast and tooled;  $2\frac{1}{2} \times 3\frac{1}{2}$  inches. 2 pieces
- 44 **Bas Relief.** Bust of FERD. HER. DUX, 1472; oblong, with cut-away corners; length 3 inches. 2 pieces
- 45 **Medallion.** Bare head, ins. VERA . SOLONIS . EFFIGIES, dentilated border; bronze, size 4 inches.
- 46 **Medallion.** Fine bust shown below the shoulders one hand on breast, long beard; fine bronze of very superior execution; oval; greatest diameter 6 inches. (Subject—St. Paul, from a design by Michael Angelo.)
- 47 **Medallion.** Bust of Pope Innocent XI., wearing his official robes; collar and chain of rich work; was much admired in Rome, where the owner purchased it; bronze of about 8 inches diameter.
- 48 **Bas Relief.** Intombment of Christ; nine figures; a very beautiful bronze,  $2\frac{1}{2} \times 4$  inches.
- 49 **Bas Relief.** Hercules strangling the Nemean Lion; in the best style of the Antique; a very old bronze,  $2 \times 2\frac{1}{2}$  inches.



- 50 **Medal.** Ob. bust; FRANCISCUS RED. PATRITIUS ARETINUS; rev. a Peace Jubilee; many figures, finely executed, CANEBAM; bronze, diameter  $3\frac{1}{2}$  inches.
- 51 **Medal.** Obv. bust of COSMUS III. ETRUSCORUM REX; rev. an old man with a long cross, his head nimbused, a child and group of cherubs; DELICI DOMINI; without doubt original, and the work of one of the great artists of that time; bronze, diameter 3 inches.
- 52 **Medal.** Obv. bust of a lady in rich attire, ELISABETHA MICHAELIA BARBADICA, MDCV.; rev. husbandman driving two oxen yoked; PATRIMONIUM FELICITER FUNDATUM; bronze, diameter  $2\frac{1}{2}$  inches.
- 53 **Medal.** Duplicate of one last described.
- 54 **Medal.** Obv. bust of ANDREAS DORIA, P. P.; rev. a galley; Doria was an early navigator, and any medal of his is rare; bronze, diameter 2 inches.
- 55 **Medal.** Obv. bust of REGINA CHRISTINA; rev. a female leading three lions; bronze, diameter  $2\frac{1}{2}$  inches.
- 56 **Medals** of VOLTAIRE, MANFREDIUS, and other eminent men of the past;  $2\frac{1}{2}$  inches; bronze. 5 pieces
- 57 **Medals.** LEOPOLD 1st (Hog Mouth), ANTONIUS SANC. DOCT. FRANCISCUS M. LENOTTUS; and two without reverses. 5 pieces
- 58 **Medal.** Subject obscene; bronze.
- 59 **Medals** and Coins. Many varieties. 23 pieces
- 60 **Doppio.** Pattern for a gold coin; DOBLON STAMPE SPAGN.; rev. shield garnished; style of the piece like that of the famous New York doubloon; thick planchet; fine brass.
- 61 **Coins**, old and curious; small size. 10 pieces
- 62 **Coppers**, quite miscellaneous. 121 pieces
- 63 **Medallion** Busts of St. Peter and St. Paul, from designs by Michael Angelo; iron, diameter 6 inches. 2 pieces
- 64 **Bust** of Pope Pius VIII., in an ebony frame under glass; appears to be silver; size 2 inches.

- 65 **Medallion** Busts of oval shape, which have been set in brooches ; brass. 3 pieces
- 66 **Religious** Medal. Busts of Christ and the Virgin Mary, and Sts. Peter and Paul on the upper half of the field on both sides ; below, temples for religious worship ; brass, diameter 2 inches.
- 67 **Religious** Medal. Obv. bust of Innocent XI. ; rev. view of St. Peter's, and religious procession.
- 68 **Gustavus Adolphus.** Oval medallion ; obv. laureated bust in rich attire ; rev. figures of Hope and Pallas, the last holding a lion by his mane ; bronze, size  $1\frac{1}{2}$  x 2 inches.
- 69 **Washington** Cent, 1791. Large eagle reverse. Very good.
- 70 **Washington** Token. "Success to the United States ;" brass ; very good.
- 71 **Virginia** Cents, 1773. One fine. 2 pieces
- 72 **Cents** of 1838 and 1853. One bright ; both fine. 2 pieces
- 72a **Head of a Satyr** on hollow oblong planchet ; very old.
- 72b **Double Medal** of Duc de Berry and Duc de Bordeaux, mounted in copper, gilt ; very fine ; diameter of medal  $1\frac{1}{2}$  inches.
- 72c **Set of Troy Weights** brought from Italy ; has shield of arms on each piece.

## ANTIQUITIES.

Under this head will be ranged many objects, simply *old*. Those strictly *antique*, or prior to the Eighth Century, will be designated as such ; while the era of the many interesting articles, whose origin was more recent, will be given when well understood or authenticated.

- 73 **Mask** of Etruscan origin. Has formed part of a large Citula, or bucket ; terra cotta ; nearly perfect. Diameter about 12 inches.

- 74 **Bust of Nero**, in Alabaster. The nose and one side of the chin are defaced, but still the head is *fine*—executed in the style of those on his Medals. Antique. Height 6 inches.
- 75 **Egyptian Idol.** *Isis Averrunca* (driver away of demons). Head of the goddess veiled, holding in one hand the *hook*; in the other the *flagellum* and *hieralpha*, a net on her left shoulder behind; a scroll, covered with hieroglyphics, enveloping her form below the waist. Blue porcelain; perfect. About 7 inches in height. Antique.
- NOTE.—This and three following lots belong to the class of Egyptian Antiquities known as *Isunculae*.
- 76 **Egyptian Idol**, Bronze. *Isis Hermanutis*, head veiled, winged bust. *Owl* (significant of an evil demon), with raised wings. Average height 2 inches. Antique. 2 pieces.
- 77 **Egyptian Idol.** Representation, in bronze, of Osiris. His head covered with the *tutulus* (high conical cap); he holds the flagellum and hook. Height 3 inches. Antique.
- 78 **Egyptian Idol.** Repetition of last figure, on a larger scale. Feet gone.
- 79 **Greek, Female Statuette**, in Bronze, dug up at Pompeii; wears the Phrygian cap and tunic, decorated with three rows of balls; both hands raised, one holding a vessel with a serpent entwined around it; perfect. Height, 4 inches.
- 80 **Winged Priapus.** Wants one foot. Antique; bronze; 3 inches high.
- 81 **Dogs**, found in a tomb; bronze. About 3 inches in length. Probably Roman; certainly antique, and very remarkable. 2 pieces.
- 82 **Fragment** of a Bronze Statuette (leg and foot) found at Pompeii.

- 83 **Etruscan Crater**, or Bowl made of a Black Pottery, highly esteemed by Antiquaries; on stand. Whole height, 7 inches; base broken, bowl entire.
- 84 **Etruscan Crater**. More shallow; similar to last; slightly broken.
- 85 **Etruscan Diota**, or Jug. Quite black, like the Bowl just described; a fine Antique, nearly perfect; 8 inches high.
- 86 **Terra Cotta Vessel**, used in Sacrificial Ceremonies. It is sometimes described as a vessel used to hold the liquor to be poured by the priest upon the Altar. A shallow dish, about 7 inches in diameter; imperfect; antique.
- 87 **Terra Cotta Vessel**, of Etruscan origin. More shallow than last. Thick rim; small bottom; 7 inches in diameter; perfect.
- 88 **Cup** used to pour the libation in Sacrifices; Terra Cotta, with a black glazing; Etruscan; diameter, 3 inches; perfect.
- 89 **Cup**. Another, like last; 4 inches; perfect.
- 90 **Cup**. Another; with incised ornaments; very rare and fine; but, unfortunately, imperfect.
- 91 **Cup**. Another; brown Terra Cotta, deep; diameter 3 inches; perfect.
- 92 **Patera**. A vessel similar to those just described, and used for the same purpose; but distinguished from the cup of libation by the *handle*. This is large of its class, and has *two* handles; diameter, 6 inches; slightly, notched.
- 93 **Patera**. Another; light brown Terra Cotta, with ornamental stripes in red; 2 handles. A very fine example; diameter about 4 inches.
- 94 **Patera**. Brown Terra Cotta; *one* handle; perfect.
- 95 **Roman Lamp**. Terra Cotta, of fine ornamental pattern.

- 96 **Vase.** Light brown Terra Cotta; small neck; rim at top and bottom, slightly broken; height, 7 inches.
- 97 **Vase,** or probably a Cinerary Urn, made of Terra Cotta, ornamented with brownish-green stripes and figures: two handles; about ten inches high; of good form, and perfect; a valuable Antique.
- 98 **Painted Terra Cotta Vessel,** of early Etruscan make. Has a female head, with the hair worn in curls, bound by three bands of pearls; the neck slightly notched, but the body perfect; height about 4 inches.
- 99 **Fragment** of a glazed and painted Terra Cotta Bowl of large size. Has been set in Stucco and framed, to preserve a very perfect picture of Venus(?) painted on the inside of the vessel. Antique.
- 100 **Statuettes,** in Bronze, found in the Island of Capri. Figure of a Barbarian, probably anterior to the Romans; also, a priest, wearing the stola, holding a cup of libation; part of left arm wanting; height about 4 inches. 2 pieces.
- 101 **Roman Bell.** Sound, but wanting the hammer; also, Bronze Seal, with Latin letters; and an implement of doubtful use, but probably a key; all Antique. 3 pieces.
- 102 **Antique Bust** of the Emperor MASSIMIANO (Maximianus), surnamed Hercules. Well preserved; bronze; height, 6 inches.
- 103 **Antique Cynocephalus.** Cut in marble. Baboon seated in a chair, holding a laver; height, 7 inches.
- 104 **Lachrymatories.** One nearly perfect; slender glass bottles, beautifully iridescent; also, neck of a glass bottle. Sold as one lot. Antique; found at Pompeii.
- 105 **Statuettes,** in Terra Cotta. A man carrying a Kid, and Figure of the Virgin Mary. Mediæval. 2 pieces.

- 106 **Composite Bust**, in Marble. The base dark veined ; the head white ; well executed ; height about 8 inches. Mediæval.
- 107 **St. George and Dragon**, standing figure of the Virgin, and the Three Graces (the last Antique) ; all executed in Basso-relievo style ; the St. George extremely fine ; in bronze, small size. 3 pieces.
- 108 **Terra Cotta Bust** of a Child, life-size ; a piece of the back part of the head wanting ; the bust, face, and all that part of the head seen in a front view, perfect, and remarkably fine. Antique.
- 109 **Carvings in Wood**. A pair of Lions of St. Mark, executed in a purely Archaic style. The oldest may be referred to the XIth Century ; the other, an exact copy, perhaps three centuries later. The oldest has been thoroughly perforated by worms, and reduced to a shell, still is perfect in form ; showing, like the other, traces of the original gilding ; interesting and valuable. Height, 6 inches. 2 pieces.
- 110 **Stone Dish**, trough-shaped, with a Lion's head carved in bas-relief, on each side ; dark color, variegated with pale spots ; 3 x 8 inches. Mediæval.
- 111 **Dishes** of Porphyritic Stone. One oblong ; one round ; average diameter, 3 inches. 2 pieces.
- 112 **Bronze Mortar and Pestle** of the Medician age, has Antique figures in compartments in bas relief ; two dolphin's heads in alto relievo, on opposite sides ; length of pestle about four inches.
- 113 **Bronze Vessel**, with handle, and four feet ; bottom solid and truncated, flush with the same ; also of the age of Medici ; about 4 inches in height.
- 114 **Achilles' Shield**, Executed in low relief, from Homer's description ; has formed the central ornament in some large work, probably of the 16th Century ; bronze ; diameter 6 inches.
- 115 **Statuette of Cupid** with a cock in his arms, one wing wanting ; bronze, antique ; very fine ; height 4 inches.

- 116 **Convent Bell.** Bears the arms of the Medici ; diameter  $3\frac{1}{2}$  inches.
- 117 **Convent Bell.** Ornamented with a series of rude figures, and the letters P.F. ; the whole twice repeated ; height 3 inches.
- 118 **Convent Bell.** Similar to last ; extremely fine tone
- 119 **Small Turkish Ball,** long handle ; whole height. 4 inches.
- 120 **Judith** delivering to her Mother the head of Holofernes ; the figures in alto relievo, and magnificently executed ; in bronze ; 3 x 4 inches ; age, De Mediei.
- 121 **Japanese Stork,** standing on a turtle ; height 15 inches ; very fine ; bronze.
- 122 **Bronze Jar** (or incense burner), with latticed cover surmounted by a dragon ; many elaborate ornaments on the body of the vessel ; solid, and very fine ; of Japanese manufacture ; height nearly 6 inches.
- 123 **Bronze Dragon,** or Kylur, on its carved ebony seat ; solid and fine ; length and height  $2\frac{1}{2}$  inches ; Japanese.
- 124 **Bronze Busts** of a Male and Female Bacchante ; size 3 inches ; modern. 2 pieces
- 125 **Copies** of Antique statuettes ; gilt. 2 pieces
- 126 **Bronze Greyhound** with collar ; antique style.
- 127 **Terra Cotta** Foot and Ankle, fragment of an Antique Statue of highly wrought Archaic work ; has traces of painting still remaining on it.
- 128 **Small Bronze Busts.** Antique designs. Solid. 2 pieces
- 129 **St. Barbara.** Bronze bas-relief ; oval, 4 x 5 inches.
- 130 **Old Head,** Sitting Lion, and Dog lying down. Bronze. 3 pieces
- 131 **Bronze** handles and ornaments. Some fine. 6 pieces
- 132 **Treasure-Box** or Casket of the 15th Century ; the hinges broken ; the lock, a remarkable piece of mechanism ; painted in colors ; iron ; length, 10 inches.

- 133 **Roman Citula and Lamp.** Fine brass. Mediæval.  
2 pieces
- 134 **Engraved Box.** On the lid, a scene in Eden etched in a round shield, the supporters, two *unicorns*; a similar shield on the bottom, supported by *lions*. Brass, 3 x 5 inches. 16th Century.
- 135 **Roman Candlesticks.** The columns ornamented by antique figures in a spiral band winding to the top. Fine brass; gilt; perfect and bright; height, 10 inches.  
2 pieces
- 136 **Roman Brackets.** Mediæval. Brass, gilt; a pair.  
2 pieces
- 137 **Roman Candlestick** with bas-relief ornaments, of Gothic design; the cover terminating in a Cupola; red jasper stand, one corner broken. Fine brass, gilt; height, 6 inches.
- 138 **Bronze Vase** on black marble pedestal. The form and execution very elegant; copy of an antique; height, 9 inches.
- 139 **Bronze Tray** for holding ink-stands and wafers, with border of acorns and leaves of oak; a butterfly on cover of wafer-box; perfect; modern.
- 140 **Bronze Paper Weight** on Marble Slab. Design, cluster of leaves and Frog. Very fine; copy of an antique.
- 141 **Antique Hand.** A copy in imitation Bronze; very fine.
- 142 **Bronze Statuette** of an Old Woman carrying a Pail, etc. Parts gilt; very fine and curious. Mediæval. Height, 6 inches.
- 143 **Bunch of Keys** used in the 16th Century.
- 143\* **Bronze Mask**, once an appendage to a bell in the Di Medici palace; and bronze statue of Peter the Hermit—two small but interesting articles. 2 pieces
- 144 **Marqueterie Box** (of the 15th Century) and Contents; among these an Egyptian *Orus* (genuine antique), *Owl* and *Serpent*, and *Goat*; the last wanting the legs—all in bronze.



- 145 **Painted Box** and Contents, viz.: Horse Head and Old Iron Seal.
- 146 **Ivory Inlaid Box** and Contents. Curious medley; antique Watch Cases, etc.
- 147 **Jewel Box** (De Maintenon), richly ornamented with gilt embossed corners and facings. Sold with valuable contents; Eg.: two antique enamelled buckles; Pearl Bas-Relief of Last Supper; ivory, nude; old paintings on copper and ivory; copies of antique gems engraved on enamel paste, etc.
- 148 **Marqueterie Jewel Box** of the 14th Century, with various other articles enumerated. Two watch-cases (one enamelled); cover of a snuff-box, dated 1634 (curious work on ivory); copper snuff-box; fine piece of carving on nutshell; exquisite piece of ivory-work representing Diana drawn by Stags; and 4 fine paintings on ivory. Contents as one; making 2 pieces.
- 149 **Olive Wood Box** with inlaid cover; length, 9 inches.
- 150 **Olive Wood Box** with inlaid cover. Length, 7 inches.
- 151 **Pilgrim Box** with cells for relics from sacred places; inlaid with mother-of-pearl.
- 152 **Japanese Knife Handles**, with embossed figures in different colored metals—antique, bronze. 6 pieces
- 153 **Old China**. Two cups and three saucers. 5 pieces
- 154 **Painted Tiles** used in the 18th Century. 7 pieces
- 155 **Painted Tiles**. Mediæval; rare and fine. 2 pieces
- 156 **Porcelain Flask**. Top modern.
- 157 **Indian Bowl**, from *Assam*. Curious sort of Papier Mache. Diameter at top, 8 inches.
- 158 **Marble Cross**. The base from a piece of marble taken by the owner from Scipio's tomb. It was made to order in Rome, and marked VIA APPIA, the maker fearing to state the fact in regard to its origin; the cross of beautiful rosso Antico. Height, 10 inches.

- 159 **Stone Cross**, inlaid with Malachite.
- 160 **Circular Pedestal**, made of yellow marble from the Via Appia. The top and bottom black marble.
- 161 **Pyramid**. The *base* formed of three pieces, the *pyramid* of a single piece of variegated marble; contains, also a piece from the Via Appia. Height, 5 inches.
- 162 **Pyramid**. Semi-circular base of Via Appia marble, rosso Antico, with Malachite top. Height, 5 inches.
- 163 **Pyramid**. Via Appia base; serpentine top.
- 164 **Circular Pedestal**. Arragonite, with black top and bottom.
- 165 **Agate** (*Pietra Dura*) knife-handle from Caracallas' baths; has a piece of the original blade of hardened copper. Antique, and fine; broken in two pieces.
- 166 **Paper Weight**. Thin piece of marble from the Via Appia, on black marble, with head in lava; very fine.
- 167 **Paper Weight**. A repetition of last.
- 168 **Portable Desk**. Made of different colored woods, the cover inlaid on both sides, and ornamented with two remarkable pictures in Marqueterie work, ebony mouldings and borders. Very ancient, and in excellent preservation. Size, 14 x 18 inches.
- 169 **Trousseau Chest** of the 15th Century. Made of oak, or wood equally hard and durable; carved on three sides; purchased in Rome, where these chests are rare and highly esteemed. Length, about 5 feet.
- 169<sup>a</sup> **Trousseau Chest** of the same era as last, curiously carved; bought in the Tyrol.
- 169<sup>b</sup> **Elaborately Carved** back pieces, suitable for the chests just described. 2 pieces

## EXAMPLES OF EARLY RELIGIOUS ART.

NOTE.—As the articles under this head, with few exceptions, come from one source, it will obviate tiresome repetition to state, once for all, that they were taken out of Convents and Monasteries in the Italian States recently

broken up by Victor Emanuel. On the suppression of these institutions, these interesting accessories of Monkish life, many of them reaching back to the time of Peter the Hermit, were brought to Rome, where they were eagerly bought up by Antiquaries, and quickly disappeared from the market.

- 170 **Altar Piece.** An old carving, representing the baptism of Christ by John; several figures besides the dove, trees, etc. in alto relievo; the whole surrounded by a high border, on thick wood, done in the 12th century. 22 x 30 inches.
- 171 **Carving in Wood.** Representing the birth of Christ; a very fine Mediæval work, some of the heads particularly good; thick oak, slightly damaged. Size about 8 x 7 inches.
- 172 **Terra Cotta.** Christ Bearing the Cross, in alto relievo, glazed in colors; parts gilt; Mediæval. Size 16 x 10 inches.
- 173 **Terra Cotta.** Christ Found and Scourged. Companion to last.
- 174 **Alto Relievo in Wood.** The Flight into Egypt; the landscape and figures colored; Mediæval. Size 16 x 16
- 175 **Terra Cotta.** Slaughter of the Innocents. 5 figures.
- 176 **Panel with Group of Carved Figures,** representing the Virgin crowned by Christ. 20 x 16.
- 177 **Terra Cotta.** Bust of Christ in alto relievo, Mediæval; oval. 12 x 15 inches.
- 178 **Terra Cotta.** Bust of Mary. Companion.
- 179 **The Annunciation.** Painted in oil on stone, broken; 12 x 10.
- 180 **Christ Crowned with Thorns,** on glass; blue ground, with figures in gold, beautifully engraved; a very rare style of work, and valuable; size 10 x 8 inches.
- 181 **Painting on Glass.** Done in gold colors, with mother-of-pearl lights; the child John the Baptist, and infant Christ. Byzantine; size 9 x 7 inches. (2)

- 182 **Embroidery.** The Annunciation and companion-piece, in frames; size 9 x 8 inches.
- 183 **Embroidery,** with parts painted. St. Michael and companion. By Margolla, 1764; size 12 x 8 inches; very fine. (2)
- 183\* **Embroidery.** The Madonna, Jesus, and St. John; extremely fine; 15 x 12.
- 184 **Painting on Glass.** Mary showing a picture of the head of Christ; gold and colors; 9 x 7.
- 185 **Paintings on Copper** in Frames, representing the Angel of the Annunciation and the Virgin Mary; very well done in oil, by a monk. (2)
- 186 **Oil Painting.** Virgin Mary; in octagon frame.
- 187 **Oil Painting.** Representing the Passion of Christ, in five scenes, on wood, canopy top; all cut from one piece; painted and gilt in a very early manner; very fine and rare. 8 x 4 inches.
- 188 **Oil Paintings** on Copper, in old carved frames. (2)
- 189 **Oil Painting** on Copper, in solid oak frame; Monk at his devotions; very fine.
- 190 **Oil Painting** on Copper, in old gilt frame; Christ holding a picture.
- 191 **Oil Painting** on Copper. Christ and the infant St. John, in gold and black frame.
- 192 **Byzantine Painting** on Copper. The Madonna crowned; Christ in her arms; in carved frame.
- 193 **Oil Painting** on Copper. Christ and his Mother on a mountain.
- 194 **Oil Painting** on Copper. Byzantine. Christ with the Nimbus inclosing his head.
- 195 **Oil Paintings** on small plates of Copper, without frames (connoisseur pictures); Madonna, Monk; Christ bound and mocked by Roman soldier and priest, and Mary Magdalen. (4)

- 196 **Oil Paintings.** Similar to last; Carolus (Borromens); Magdalen; Penitent, and two others; a connoisseur lot. (5)
- 197 **Oil Painting** on Copper. Saint Praying; fine.
- 198 **Oil Paintings** on panels of wood, without frames; very old and interesting; Carlo Lombard (?); St Matthew, and a remarkable scene in the Clouds, with many figures; at least 3 centuries old. (3)
- 199 **Panels** in gold and colors, signed with the painter's name or monogram, with date, requiring careful cleaning to read with certainty, but very old and interesting. (2)
- 200 **Oil Paintings** on Wood. Christ and St. John with the Virgin; and The Annunciation; without frames; very old. (2)
- 201 **Oil Painting** on Wood. The Stoning of Stephen.
- 202 **Oil Painting** on Octagon Panel, in original frame; the Madonna.
- 203 **Oil Painting** on Wood. Christ on the Cross; three figures at the foot; an old sketch.
- 204 **Oil Painting**, in original frame; Crucifixion, on black back-ground, spangled with gold stars; old panel.
- 205 **Oil Paintings** on Panels. Angel; Mother and Babe; and Christ dead, the last on cloth lined on wood. (3)
- 206 **Oil Painting** on Panel. Saint; very fine.
- 207 **Byzantine** Painting. The Madonna Dolorosa; a rare example of very early work, unfortunately considerably injured.
- 208 **Oil Painting** on Panel. St. Joseph with the young Jesus in his arms; Mary reading.
- 209 **Curious** Small Objects from Various Convents; aids to devotion. 1. Ecce Homo, carved on a nut-shell, surrounded by gems, and beautifully framed. 2. Circular painting on copper, framed. 3. Another, in black frame, on wood. 4. Another, in copper. 5. One very fine on wood, without frame; fine lot of five pieces.

- 210 **Scagliola.** (Colors laid in cement, in imitation of Mosaic); a Madonna; large oval in frame. Mediaeval.
- 211 **Antique Painting** cut from a large panel; bust.
- 212 **Michael Angelo Cherub**; on a kind of Terra Cotta, painted.
- 212a **Small Box**, containing relics and an ivory crucifix.
- 212b **Panel** painted on both sides; on one side a moulding cut from a single piece of wood.
- 212c **Pair of Oil Paintings** on small panels; Lazarus attended by two dogs; and Mary Magdalen; little pictures of merit. (2)
- 213 **Reliquary.** Wax figure of Christ, surrounded by symbolical flowers, single and in clusters. In Antique gilt case, glazed.
- 214 **Reliquary.** A Wax Medallion surrounded by tinsel flowers, and the names of saints; framed and glazed.
- 215 **Reliquary.** Wax Medallion, surrounded by gems and fine gold and silver tissue and spangles; ebony frame with circular top; names of saints, etc.
- 216 **Reliquary.** Companion to last.
- 217 **Reliquary.** Another more elaborate; all the materials fine, mounted on silk, parchment lining; square.
- 218 **Reliquary.** Companion to last.
- 219 **Reliquary.** A pair with loops; circular. 2 pieces.
- 220 **Holy Water Fountain**; terra cotta, enameled and painted; a rare early Italian pottery; stands on its base, supported from behind by a female figure.
- 221 **Holy Water Fountain**; hanging pattern; figures of two angels holding a crown above the Virgin; perfect.
- 222 **Holy Water Fountain**; two angels supporting a crucifix; same pattern; perfect.
- 223 **Holy Water Fountain.** Extremely fine, but the heads of the figures wanting; has a fine painting of the Virgin and Child.

- 224 **Holy Water Fountains**; imperfect. 2 pieces.
- 225 **Crucifix**: a remarkable and almost unique figure of Christ in *leather*, about  $2\frac{1}{2}$  feet in height. The owner, not then proposing to sell it, refused in Europe an offer of five hundred francs; it was acknowledged by antiquaries to be of the greatest rarity and importance.
- 226 **Crucifix**; black cross and pedestal; ivory Christ; elaborate and very fine; length, 12 inches; of cross, 32. Byzantine.
- 227 **Crucifix**; cross in bronze gilt, highly ornamented; exquisitely carved figure of Christ in cedar from Lebanon; height, 10 inches; of cross, 30.
- 228 **Crucifix**; black cross, brass mounted; figure in wood, with skull below the feet; height of all,  $3\frac{1}{2}$  feet.
- 229 **Crucifix**. Black cross; ivory Christ; blood stains; gilding on border of drapery; fine work. Length, 9 inches; of all, 19. Byzantine.
- 230 **Crucifix**. Same size and description; equally fine.
- 231 **Crucifix**. Small Christ in ivory.
- 232 **Crucifix**. Similar to last.
- 233 **Crucifix**. Carved from a single piece of wood, with a reliquary in the standard. All curiously wrought with symbols of the Crucifixion; ivory tips; length 12 inches.
- 234 **Crucifix**. All wood. Length of figure, 9 inches.
- 235 **Crucifix**. Figures in bronze. 2 pieces.
- 236 **Ebony Cross** on stand, inlaid with mother of pearl and ivory. Very rare even in the old religious houses, being of Byzantine work. Height, 18 inches.
- 237 **Ebony Cross** on stand; same style; crosslets on the limbs. Height 14 inches.
- 238 **Ebony Cross**. Another in the same style.
- 239 **Ebony Cross**. Inlaid as before; plain limbs.

- 240 **Ebony Cross.** Inlaid on four sides, brass ends; made to carry on the person; has been much used; interesting. Length, 9 inches.
- 241 **Ebony Crosses.** All inlaid with mother of pearl. Small size. 3 pieces.
- 242 **Ebony Cross.** Byzantine, ornamented on all sides; containing a *relic* mounted on wicker work, and enclosed under glass.
- 243 **Crosses, Parts of.** Old Byzantine. 2 pieces.
- 244 **Large Ebony Cross,** richly inlaid with ivory and pearl. (Byzantine). Length, 21 inches.
- 245 **Ivory Christ,** of very superior execution and great antiquity. Wants the arms. Length, 7 inches.
- 246 **Ivory Christ.** Another equally fine; perfect. Length, 7 inches.
- 247 **Ivory Christ,** crowned with thorns. Whole length, 10 inches. Very fine.
- 248 **Christ,** in bronze. Gilt; very fine. Length, 9 inches.
- 249 **Christ,** in bronze. Silver plated; equally fine. 7 inches.
- 250 **Christs,** carved in wood. Some bearing marks of great age; more or less imperfect, and one in brass. 4 pieces.
- 251 **Christ,** in "Caput di Monte" porcelain. Now no longer made in Europe, and highly esteemed by collectors. This specimen is very fine, but wants the arms.

### Ancient Wood Carving.

- 252 **Head of a Satyr.**
- 253 **Michael Angelo** Heads of Cherubs. 2 pieces.
- 254 **Masks.** Square. 2 pieces.
- 255 **Ephesian Diana.** A pair. 2 pieces.
- 256 **Ephesian Diana.** A pair; different. 2 pieces.
- 257 **Ephesian Diana.** Very fine.
- 258 **Statuette in a Niche.** A pair; very fine. 2 pieces.



- 259 **Escutcheon of Arms.** Fine.
- 260 **Winged Head** and Companion. 2 pieces.
- 261 **Winged Heads.** Small. 4 pieces.
- 262 **Masks** or Mounstrous Faces. 5 pieces.
- 263 **Corner Pieces.**
- 264 **Bas-relief.** Long.
- 265 **Angel,** and Companion.
- 266 **Reed Box.** Joint of an Oriental Cane, 4 inches in diameter and eight inches long, forming a natural box. The exterior surface has been skilfully earved by a native artist, and is represented to be, and appears to be, extremely old.
- 267 **Reed Box.** Another, a little smaller, but equally fine and remarkable.
- 268 **Bottle,** made out of a Coeoa-nut shell. Silver mountings and chain and remarkably fine carving.
- 269 **Bottle.** Another; has lost some of the mountings and the chain. Elegantly carved.

### Miscellaneous Antiques and Bronzes.

- 270 **Antique Clock.** A curious affair of the 17th Century. The works are brass, with two extra dials; one "Repe Nicht Repeter," the other "Schlagt Nicht Sehe;" above the face, "the All-Seeing Eye," in a triangle; stands 18 inches high; on brass feet, with brass handles; in running order. Tyrolese.
- 271 **Antique Brass Clock,** 8 inches high.
- 272 **Antique Gold Watch,** with gold eap and enameled cases; in perfect order.
- 272\* **Antique Gold Enameled Watch,** in a spherical ease.
- 273 **Antique Watch,** made by KESSEN, Paris. Gilt, enamelled baek; has been set with brilliants, some of which are gone.

- 274 **Antique Watch**, made by TERROTTE, Geneva. Pinchbeck; enamelled back.
- 275 **Antique Watch-Case**. Fine enamelled painting.
- 276 **Antique Snuff-Box**. White horn, with ivory cover; very quaintly carved.
- 277 **Antique Ivory Box**. The cover ornamented on the outside with marqueterie work, and on the inside with a picture of Sampson and Delilah, painted in oil; the body broken.
- 278 **Antique Snuff-Box**, made of wood; the cover a fine piece of marqueterie mosaie, in mother-of-pearl and wood.
- 
- 279 **Antique Snuff-Box**. A Holy Family, in bas-relief, on cover; lignum vitæ, with tortoise-shell lining.
- 280 **Antique Snuff-Box**. Brass-mounted tortoise-shell.
- 281 **Antique Snuff-Box**. Horn, with a beautiful painting on ivory on cover; subject, *January* and *May*.
- 282 **Antique Snuff-Box**. Tortoise-shell, with a Holy Family, painted with great delicacy, inserted in cover.
- 283 **Elegant Snuff-Box**. Polished jet, lined with gold; a superb painting on cover, under glass.
- 284 **Snuff-Box**. Polished black square box; Leda and Swan on the cover; extremely fine.
- 285 **Snuff-Box**: Polished black square box; Sleeping Beauty and landscape on cover; extremely fine.
- 286 **Snuff-Box**. Lignum vitæ, lined with tortoise-shell; old Roman mosaie cover; butterfly on white ground, with fine border; the colors exquisite.
- 287 **Snuff-Box**. Copper, enamelled within and without, and elegantly painted; cracked, and much abused, yet very rare, as well as old.
- 288 **Elegant Meerschaum Pipe-Cover**. Silver gilt; diameter, 2 inches.

- 289 **Meerschaum Pipe.** Straight stem, amber mouth-piece  $2\frac{1}{2}$  inches long; the color of this pipe is a deep purple, of remarkable transparency; in case.
- 290 **Meerschaum Pipe Bowl,** highly-colored; large size.
- 291 **Meerschaum Pipe.** Silver-mounted, with white and black ivory stem, with flexible joint; the bowl extra large and fine; well-colored; work of the last century.
- 292 **Bronze Bust of Voltaire,** on marble base. The bronze about 4 inches in height.
- 294 **Bronze Bust of Homer,** on paper weight.
- 294 **Bronze Cornucopia.** A Ram's Head forming the point; the mouth loaded with flowers and fruit; set on bronze base, and mounted on paper weight; from the Antique.
- 295 **Bronze Cornucopia.** A companion to last.
- 296 **Bronze Hand,** on paper weight; extremely fine.
- 297 **Bronze Inkstand.** A Nautilus Shell (De Medici); very elaborate and fine; size  $5 \times 3\frac{1}{2}$  inches.
- 298 **Bronze St. Cecilia,** bewailing, etc.; on black marble; length of figure, 9 inches; fine.
- 299 **Silver Clasp Fork,** ivory handle.
- 300 **Bull's Head.** Terra Cotta.
- 301 **Whale's Tooth.** Etched.

### Mosaics and Enamels.

- 302 **Tablet,** executed in *Litho-stratum* or *virmiculated* mosaic; it has a cross of black basalt behind a Holy Dove. This relic was taken from a convent at Botzen in the Tyrol; Mediæval; size,  $11 \times 7$  inches. For holy water.
- 303 **Tablet,** representing a bird and fruit in proper colors. Executed on black slate ground, in the same manner; the picture is made of Lapis Lazuli, serpentine, and rosso Antico; Mediæval; size,  $9 \times 8$  inches.

- 304 **Tablet.** Same description as last ; bird and fruit : size, 6 x 4 inches.
- 305 **Tablet,** or paper weight, without figure. A fine example of litho-stratum ; size, 4 x 3 inches.
- 306 **Tablet** of *Litho-stratum* Mosaic, with a symbolical heart of inlaid marble in the centre ; the heart is in relief from the surface of the work ; the whole framed ; mediæval ; size, 7 x 6 inches.
- 307 **Tablets** of *Litho-stratum* Mosaic, in closing dendritic marble or lava, showing figures of trees ; Mediæval. Size, 4 x 3 inches. 2 pieces
- 308 **Tablet** of *Florentine* Mosaic. Cluster of flowers on five stems ; on black slate, with velvet lining ; modern ; size, 9 x 6 inches.
- 309 **Tablet** of the Same. Flowers ; very fine ; size, 11 x 3 inches.
- 310 **Tablet** of the Same ; size,  $4\frac{1}{2}$  x 3.
- 311 **Tablet** of the Same ; size, 4 x  $2\frac{1}{2}$ .
- 312 **Tablet** of the Same ; oval ; size, 4 x 3.
- 313 **Tablet** of the Same ; oval ; size, 4 x 3.
- 314 **Tablet** of the Same. A Rose. Square, round corners ; size, 5 x  $3\frac{1}{2}$ .
- 315 **Tablets** of unfinished Florentine Mosaics ; different subjects ; average size, 5 x 3 inches. 3 pieces
- 316 **Scagliola.** A very elegant example of Mediæval work ; flowers and butterfly on black ground, surrounded by a red border ; size, 11 x 8 inches.
- 317 **Scagliola.** Lady with the wings of a butterfly ; white figure, on polished black slate ; in Antique frame cut out of a single piece of wood ; carved, in black and gold ; size  $5\frac{1}{2}$  x 4 inches.
- 318 **Marqueterie Board,** very old ; has been designed and used for some game not understood ; size 24 x 13 inches.

- 319 **Fragments of Mediæval Marqueterie**, taken from a convent ; piece of a lectern and panel. 2 pieces
- 320 **Marqueterie Glove Box**, lined with camphor wood. The entire surface of the box is covered with magnificent Mosaic, in silver, pearl, and ivory ; neither is it *tinsel* work ; the silver, of which there are many thousand pieces, is cut from a plate as thick as our half dime. The size is, length 11 inches, breadth 4 inches, height 3 inches.
- 321 **Antique Roman Mosaic**, on copper. Roman Fasces and Axe, in lively colors, on dark-blue ground ;  $1\frac{1}{4}$  inches in length.
- 322 **Antique Roman Mosaic**, on copper. A bird on its nest, in bright colors, on blue ground ; 1 inch in length.
- 323 **Antique Roman Mosaic**, on copper. Dark-colored bird, on light background ; 1 inch long.
- 324 **Byzantine Mosaic**. Head of an Old Man, on red ground, on copper ; very effective ; round ; 1 inch in diameter.
- 325 **Byzantine Mosaic**. Head of a Satyr ; in the same style as the last ; also round, and smaller than last.
- 326 **Florentine Mosaic**, on black stone. Flowers in small stones, with internal lights and opaline colors ; round ;  $1\frac{1}{2}$  inches in diameter.
- 327 **Roman Mosaic**, on polished jet. Two birds on the wing, each holding on to an insect ; oval ; about 1 inch average diameter.
- 328 **Roman Mosaic**, on polished jet. Architectural ; round ; diameter  $1\frac{1}{2}$  inches.
- 329 **Roman Mosaic**, on polished jet. A narrow piece,  $2\frac{1}{4}$  inches long, with figures of butterflies and bird.
- 330 **Roman Mosaic**, black, as before, with a spaniel of the King Charles breed ; small, but very fine.
- 331 **Roman Mosaic**, on blue enamel ; landscape, with antique ruin ; small oval ; also very fine.

- 332 **Roman Mosaic**, on blue enamel. Picture on both sides ; oval ;  $1\frac{1}{4}$  inches average diameter.
- 333 **Byzantine Mosaics**. Modern. Small butterflies. A pair.
- 334 **Roman Mosaic**, in the monumental style, on serpentine. Duck and Duckling on Water ; in a cartouche, with red border ; 3 inches long. Mediæval.
- 335 **Antique Roman Mosaic**, on copper. Panther looking back ; one fore-foot raised ; round ; diameter 3 inches.
- 336 **Antique Roman Mosaic**, on copper. Bird, on blue background ;  $1\frac{1}{2}$  inches long.
- Note.—The Enamels that follow are all on copper.
- 336\* **Old Enamel Medallion**, used in Mediæval palaces on drapery pins ; very rare ; imperfect. 3 pieces
- 337 **Old Enamel Painting**, on Copper. A fragment, showing a baptismal scene ; landscape, with buildings, &c. ; undoubtedly a very early example.
- 338 **Madonna and Infant Jesus**, within a circular wreath of flowers ; done in a good style, in magnificent colors ; enamel, on copper ; oval ; largest diameter  $2\frac{3}{8}$  inches. *De Medici*.
- 339 **Old Enamel**, on Copper. Admirable as a work of art, and entirely perfect in preservation. Subject—“One of the Twelve ;” oval ; largest diameter 3 inches.
- 340 **Old Enamel**, similar to last. Byzantine ; largest diameter  $3\frac{1}{2}$  inches.
- 341 **Old Enameled Heart**. On it a picture of Mary and Jesus in the clouds, crowned ; length  $1\frac{1}{2}$  inches.
- 342 **Oval Enamel**, with a picture of Mary as Queen of Heaven. Extremely fine ; length  $1\frac{1}{2}$  inches.
- 343 ——— Another. Same subject. Interesting example of very early enamel painting.

- 344 **Madonna** standing on a Crescent in Clouds. Very fine ; small oval enamel, on copper.
- 345 **Madonna**, with open book. Small oval enamel ; 1 inch long.
- 346 **Madonna** and Infant Jesus, in Raphael's manner. Small oval enamel ;  $1\frac{5}{8}$  inches in length.
- 347 **Enamel** picture of a little girl leading a lamb. Fine landscape ; average diameter 1 inch.
- 348 **Fine Enamel** painting, in the style of Greuze. Lady with straw hat ; small oval.
- 349 ——— Another. Similar.
- 350 ——— Landscape. Scene in Switzerland. Extremely fine little oval ; the largest diameter hardly 1 inch.
- 351 ——— Scene in Switzerland. Lozenge shape ; small.
- 352 ——— Rustic Lover's Scene. Beautiful landscape ; round ; diameter  $1\frac{3}{4}$  inches.
- 353 **Enamel** and Gold Painting. Subject : lady seated, playing on a musical instrument ; 2 inches in diameter ; round.
- 354 **Enamel** Portraits. Lady and Gentleman ; a pair, or 2 pieces.
- 355 **Enamel** Portrait of Madame Roland. *Extremely* fine ; oval ;  $2\frac{1}{4}$  long.
- 356 **Enamel** Portrait of Lord Canning. Equally fine.
- 357 **Enamel** Portrait. Subject : Unkown, but superb.
- 358 **Enamel** Portrait. Half length of a gentleman ; very fine.
- 358\* **Minute Enamels**. Tyrolese Maiden ; Bust in the style of Watteau ; very fine. 2 pieces.
- 359 **Fine Enamel** Missive. The address : "A Mademoiselle, Mademoiselle de Bel Humeur au Séjour de la Vertu." When open, shows half-length picture of a fine gentleman ; a curiosity, and valuable as a work of art ;  $3 \times 2\frac{1}{2}$  inches.

- 360 **Perugino Gems.** Minute paintings on ivory, inclosed in copper cases, set in silver; made in *Perugia*, in Italy, by scholars of Pietro Perugino, who died in 1524; held in great esteem on account no less of their beauty than rarity; formerly much worn by Catholic ladies; head of Madonna, and Companion. 2 pieces.
- 361 **Perugino Gem.** Head of Mary; in white dress.
- 362 **Perugino Gem.** The same; in blue and gold.
- 363 **Perugino Gem.** Female Saint's head; in Nimbus.
- 364 **Perugino Gem.** Mary; in red gown, blue mantle, and golden hair; extremely beautiful.
- 365 **Perugino Gem.** White bust, on dark back-ground; very fine.
- 365\* **Perugino Gems**, taken from old settings, The Sybil; The Magdalen; Ancient Ruins; Ceres; Cleopatra; The Madonna. A choice group of these rare and exquisite little pictures. 6 pieces
- 366 **Painting**, on Mother-of-Pearl. Mounted in Antique Silver, under a fine crystal of moulded Venetian glass. Bacchante carrying off a reluctant female; drawn in Vermillion, on green back-ground; heightened by pearl lights and colors. Very effective and fine.  $1\frac{1}{2} \times 1\frac{1}{4}$  inches.
- 367 **Painting** on Mother of Pearl. Landscape and water front, with boats and figures; internal colors and lights very remarkable; small oval; a *gem*.

### Miniature Paintings on Copper and Ivory.

- 368 **Painting on Copper.** Lady reading; oil; oval;  $3\frac{1}{2}$  in.
- 369       The same.       Madonna; Byzantine; small oval, in oil.
- 370       The same.       *Idobuldo*, the Visigoth; from a design by Michael Angelo, done in 1751, as recorded on the work. Oil; diameter, 4 inches.



- 371 **Painting on Copper.** *Odoacre*, di Heruli ; also by M. Angelo ; a companion to last.
- 372 The same. Portrait of a lady.
- 373 **Painting on Ivory.** Girl, with Cupid in her arms. Very fine ; diameter,  $1\frac{1}{2}$  inches.
- 374 The same. Picture of a child, half-length. [Louis (Charles) Dauphin] ; diameter, 2 inches.
- 375 The same. Nude Blonde, ready for the bath ; diameter, 2 inches.
- 376 The same. Portrait of the Right Hon. Lady Gertrude Fitzpatrick, in her youth.
- 377 The same. Rural courting.
- 378 The same. A Blonde ; imperfect ; diameter,  $2\frac{1}{4}$  inches.
- 379 The same. Madonna Dolorosa ; diameter, 3 inches. Mediæval.
- 380 The same. The Sybil ; very fine ; diameter,  $2\frac{1}{2}$  inches. Mediæval.
- 381 The same. The Sybil, after Guercino ; same size. Mediæval.
- 382 The same. Pope Gregory (?)
- 383 The same. Pius VII.
- 384 The same. Pius VIII.
- 385 The same. Victoria, Queen ; oval ;  $3\frac{1}{4} \times 2\frac{1}{4}$ .
- 386 The same. Duke de Berry ; also Madam du Berry. 2 pieces.
- 387 The same. Double picture. Madonna ; reverse, the Saviour ; very fine ; oval ; diameter,  $2\frac{1}{2} \times 2$  inches Mediæval.
- 388 The same. Madonna.

- 389 **Paintings on Ivory**, after Antique gems. Sept. Severus, Julia Domna, and Caracalla. Mediæval. 3 pieces.
- 389\* **Painting on Ivory.** Portrait of Olinthus Gregory, Prof. of Mathematics in the R. A., at Woolwich.
- 390 The same. Madam Letitia Bonaparte.
- 391 The same. Josephine; exquisite.
- 392 The same. Madam Campan, in her youth.
- 393 The same. Madam De Stäel (?) in her youth.
- 394 The same. The Princess Borghese.
- 395 The same. Pache, French Minister of War, 1772.
- 396 The same. General Brun, of France.
- 397 The same. Madame La Valette.
- 398 The same. Bust of Ferdinand I., with his decorations; mounted in gold and black.
- 399 The same. Bust of Maria Carolina, consort of Ferdinand; mounted as before.
- 400 The same. Madonna. Extremely fine; in gold and black.
- 401 The same. Maiden nude; Cupid aiming an arrow at her breast. Extremely fine; in black setting.
- 402 The same. Abelard and Heloise; in oak mounting.
- 403 The same. Portrait of a Lady; half nude.
- 404 The same. Portrait of General Poniatowski; in gold and black.
- 405 **Fine Miniature Portrait**, in Oil. Subject: Unknown.
- 406 **Fine Portrait** of the Duc Degazes. Mounted.
- 407 **Painting on Ivory.** Landscape; St. Joseph; Mary; Christ and St. John. By Zucarelli. A *gem.* Round; diameter, 3 inches; mounted in gold and black.

- 408 **Fine Picture**, in Hair-work and Sepia. Landscape, Tomb, and vestal Virgin; on ivory; diameter about 3 inches; mounted in gold and black.
- 409 **Fine Miniature** of a Lady (the Countess Gower). Her head covered by a lace veil; a work of quality; mounted as before.
- 410 **Fine Miniature** likeness of the Hon. Mrs. Charles Lindsay. Profile view; in black frame.
- 411 **Fine Mezzotint Miniature** (Physionotrace). Subject given; concealed by frame; mounted in gold and black.
- 412 **Painting on Ivory.** "Isabel." Bust to the waist; extremely fine.
- 413       The same.        Woman reposing.
- 414       The same.        Charlotte Corday, as a rustic girl.
- 415       The same.        La Sybil.
- 416       The same.        Portrait of Talma.
- 417       The same.        Portrait of Mary Stuart.
- 418       The same.        Alex. Castriotto.
- 419       The same.        Bust of a Lady. Extremely fine; mounted in gold and black.
- 420 **Miniature Landscapes**, on Silk. Painted in oil, under glass; very beautiful.                                2 pieces.
- 421 **Miniature Landscapes.** Like last. Equally fine.    3 pieces.
- 422 **Miniature Landscapes.** Another pair. The same.    2 pieces.
- 423 **Painting on Porcelain.** A Lady, in scarlet jacket; mounted.
- 424 **Painting on Ivory.** Lady, in the Costume of the 18th Century. Mounted in gold and black.
- 425 **Fine Miniature**, on Ivory. Bust of Gentleman. *Ulisse Griffon, part.* Mounted in gold and black.

- 426 **Fine Miniature**, on Ivory. Picture of Sir Joseph Banks, seated by a table; a King Charles Spaniel; Globe, etc. In a case.
- 427 **Fine Miniatures**, on Ivory. Portrait of Robert, Earl of Grosvenor, and one of a Lady; in ivory case; the lot.
- 428 **Miniatures on Ivory**. Gentleman and Lady. Fine.  
2 pieces.
- 429 The same. Gentleman and Lady. Fine.  
2 pieces.
- 430 The same. Gentleman and Lady. Fine.  
2 pieces.
- 431 **Miniature on Ivory**. Picture of a Gentleman, in the uniform of a Naval Officer; on a table before him, writing materials, books, etc.; fine work of art.
- 431\* **Miniature Portrait** of Capt. Charles Ledyard, R. N., on ivory.
- 432 **Miniature on Ivory**. Picture of a gentleman in the uniform of a military officer of rank, a battle going on in the distance; extremely fine.
- 433 **Miniature on Ivory**. A gentleman reading a letter.
- 434 **Miniatures on Ivory** of ladies; one with cap, the other with white lace cap. 2 pieces
- 435 **Miniatures on Ivory** of a gentleman and lady. 2 pieces
- 436 **Miniatures on Ivory**. Portraits of gentleman and lady. 2 pieces
- 437 **Pictures on Ivory**. Head of Mrs. Murray, and lady with fan. 2 pieces
- 438 **Pictures on Ivory**, one painted in the time of Charles II. on the inside cover of a Marqueterie box, and two miniatures. 3 pieces
- 439 **Miniature on Paper** of a girl, only the head; fine.
- 440 **Fine Painting on Glass**, unfortunately broken; 1 small ditto in oil. 2 pieces

- 441 **Landscapes** in Oil signed E. H. ; small round pictures  
in black frames. 2 pieces

## Seals and Engraved Stones.

NOTE.—The stones engraved with crests and letters are mostly the work of the present century. The remainder, that are not mentioned as *antique*, are, with few exceptions, of the *De Medici* period.

- 442 **Office of his Majesty's Usher.** Shield of arms, with an American Indian and soldier in mail armor for supporters; round, diameter 1 inch, cut in deep red carnelian, and highly finished.
- 443 **Seal** cut in *Amethyst* and repeated in *Carnelian*; a magnificent shield of arms, with two crests and mottoes. DEO GLORIA FIDES, on a label below the arms. 2 pieces

NOTE.—To show the beauty of this and a few that follow, impressions will be taken and exhibited with the stones.

- 444 **Druid's Head.** A gem, with the Druid's wreath surrounding the bust; red carnelian, slightly oval; average diameter 1 inch.
- 445 **Harpocrates**, his bust to the waist, shoulders bare; together with a fine Antique head of Perseus; carnelian. 2 pieces
- 446 **The Death.** Four dogs and the Quarry; really a masterpiece of engraving, and an uncommonly fine stone; oval; diameter  $1\frac{1}{8}$  inch; red carnelian.
- 447 **Amethyst Ring Stone**, on which is a Phoenix; deep purple color.
- 448 **Seals** with Heads and Crests in red and white carnelian; among which a head of APOLLO, one of MINERVA, one of a ROMAN lady, standing figure of UNA and Lion; a double head, etc.; large size; all extremely fine. 8 pieces
- 449 **Carnelian Seals**, representing Hercules slaying the Hydra, and another classical subject equally fine; slightly broken. 2 pieces

- 450 **William Shakespeare** and Robert Burns. On a purple tinted agate, and a pure white chalcedony ; their busts in the best work. 2 pieces
- 451 **Ring Stones** in blood-stone, chalcedony, and dark red carnelian ; stork, lion's head, Hercules holding a tree, and bee-hive—all extremely fine. 4 pieces
- 451*a* **Seals** on Blood-stone and Carnelian ; very fine. 4 pieces
- 451*b* **Intaglio Seals** of various kinds ; some broken. 8 pieces
- 452 **Copies** of rare Antique Intaglios, remarkable for the freedom of the subjects chosen for illustration. 7 pieces
- 452*a* **Copies** of rare Antique gems, remarkable for the elegance of the figures and heads, and for the beauty of the finish. 29 pieces
- Note.—These (452 and 452*a*) are the only copies in the Collection. They are fine, imitating the original in every particular, the paste being colored to the semblance of real stones.
- 452*b* **Polished Agates** and Jaspers, some cut into forms for signets and watch charms. 12 pieces
- 453 **Seals**, with Initials and Mottoes ; cut in a variety of forms, some very elegant. 10 pieces
- 454 **Elegant Ring Stones**, bearing proper names and mottoes in script letters, cut in red and white carnelian. 9 pieces
- 455 **Seal Stones**, with a single script letter, *E. W. B. L. C.* Red carnelian. 5 pieces
- 456 **Seal Stones**, with two letters of the script type ; red carnelian. 13 pieces
- 457 **Seal Stones**, with three or more script letters ; red carnelian. 15 pieces
- 458 **Seal Stones**, with script letters in Intaglio cartouches ; red, yellow, and white carnelian. 8 pieces
- 459 **Seal Stones**, with script initials and crest ; red and white carnelian. 10 pieces

- 460 **Seal Stones**, with the same letters in cartouches, with crests; red and white carnelian. 7 pieces
- 461 **Seal Stones**, with initials in old English letters; red and white carnelian. 11 pieces
- 462 **Seal Stones**, with similar letters and crest. 9 pieces
- 463 **Seal Stones**, with mottoes, crests, etc., in blood-stone and carnelian. 12 pieces
- 464 **Seal Stones**, with crests; red and white carnelian; very fine. 8 pieces
- 465 **Seal Stones**. A variety of subjects; some suitable for sportsmen; in red and white carnelian. 12 pieces
- 466 **Intaglio Heads**, cut in blood-stone, carnelian, and chalcidony. 5 pieces
- 467 **Selected Stones**, of good color and even size, from several of the foregoing varieties—all deep red carnelian. 6 pieces
- 468 **Selected Crests**, etc. 5 pieces
- 469 **Ring Stones**. Carnelian and chalcidony, small size. 5 pieces
- 470 **Selected Seals**. Mary at the Cross, etc.; blood-stone, and red and white carnelian; extremely fine. 7 pieces
- 471 **Selected Seals**. A phoenix, heads and crests, etc.; very fine deep red carnelian. 9 pieces
- 472 **Carnelian Crests**. Oval; fine matched pair. 2 pieces
- 473 **Carnelian Heads**. Oval; matched pair. “
- 474 **Chalcidony Shields**. Oval; matched pair. “
- 475 **Carnelian Figures**. Long oval; matched pair. “
- 476 **Carnelian Figures**. Long oval; Diana and Hope; a pair. 2 pieces
- 477 **Cameo Heads** on light and dark-brown Jasper; Mediæval, of thoroughly good work; a pair of fine stones, 2 pieces

- 478 **Cameo Heads**, cut on semi-transparent stones, with two or more stripes in different colors—all fine. 2 pieces
- 479 **Carnelian Crests**. Matched pairs, in red and white.
- 480 **Carnelian Stones**. Elegantly engraved. Oval shape; a pair. 2 pieces
- 481 **Carnelian Heads** on thick stones. An elegantly matched pair, of Mediæval work. 2 pieces
- 482 **Carnelian Heads**. Male and Female. Oval; matched pair. 2 pieces
- 483 **Carnelian Heads and Crests**. Two matched pairs. very fine. 4 pieces
- 484 **Carnelian Heads and Crests**. 2 pairs. 4 pieces
- 485 **Carnelian Heads and Crests**. 2 pairs. 4 pieces
- 486 **Carnelian Heads**. Closely matched; very fine; small ovals. 2 pieces
- 487 **Carnelian Heads**. Well matched; 2 pairs. 4 pieces
- 488 **Cameo Heads**, cut on red and white carnelian, the different colors producing a charming effect, as managed by the artist. The heads are female, one of a Bacchante, the other of Flora; on the mantle of the former a ram's head has been very skilfully portrayed, while the head is loaded with clusters of the vine; the head of Flora is bound with roses; oval, diameter  $1\frac{1}{4}$  inches. 2 pieces
- 489 **Hunting Scenes**, cut on jasper and carnelian. A very fine pair of little square pictures. 2 pieces
- 490 **Mediæval Heads**, cut on brown coeholong and carnelian. Fine stones; only requiring to be reent on the edges to be perfect. 2 pieces
- 491 **Chalcedony Brooch Stone**. Cut in relief; oval.
- 492 **Ring Stones** of various kinds. All small and very fine; in the lot, a deep *blue* agate. 10 pieces
- 493 **Brown or Smoky Topaz**. A pair of very fine stones, well engraved. 2 pieces



- 494 **Topazes**, from deep yellow to white. Fine Hunting Scene; crest, "Adieu;" Crown on an altar, with a wreath; and two with letters. 6 pieces
- 495 **Madonna**, with Crown and rays, cut on a fine brown and white stone, every part bearing a most beautiful polish. The face is drawn nearly to a full front, the head inclining slightly to the observer's left, and standing out in high relief from the brown background; the work of a De Medici Artist, and a real gem; large oval, diameter  $1\frac{1}{2}$  inches. Cameo.
- 496 **Cameo** Bust of a Woman, with a dagger at her breast; brown and white agate, diameter  $1\frac{1}{4}$  inches.
- 497 **Cameo** Bust of Pius IX., on a fine onyx. Diameter 1 inch.
- 498 **Coral** Bust of a Cherub, wreathed with flowers. Solid Cameo; thick, and  $1\frac{5}{8}$  inches long.
- 499 **Antique** Coral Cameos, full faces. A fine pair; diameter 1 inch. 2 pieces
- 500 **Coral Ornaments** and Heads. Among them a pair of miniature Elephants' tusks, finely carved; group of Cherubs on single piece, etc., etc. 7 pieces
- 501 **Coral Ornaments** and Heads. 16 pieces
- 502 **Lava** Heads, suitable for cuff buttons. 9 pieces
- 503 **Lava** Busts, on bases, suitable to mount for paper weights, but exquisite as works of art. 2 pieces
- 504 **White Lava** Bust of a Cherub. Very fine.
- 505 **White Lava** Cameo Cuff Buttons. Very fine. 2 pieces
- 506 **Shell** Cameo, small Heads. A variety of colors; fine. 3 pieces
- 507 **Antique** Shell Cameos. Very fine; equal to stone. 4 pieces
- 508 **Shell** Cameos, brown ground, white heads; matched pair; suitable for sleeve buttons. 2 pieces
- 509 **Shell** Cameos. Another pair; Female Heads. 2 pieces

- 510 **Shell Cameos.** Also a pair. 2 pieces
- 511 **Shell Cameos,** of about the same size. 6 pieces
- 512 **Shell Cameos.** Suitable for Ear-rings ; Antique figures. 2 pieces
- 513 **Shell Cameos.** Suitable for Brooches. 4 pieces
- 514 **Shell Cameos.** Mars, Minerva, Female Bacchante, Eagle and Child, and Diana ; very fine. 5 pieces
- 515 **Shell Cameos.** Portrait of Pins VIII. ; of a Gentleman and Lady ; and three others (one in lava) ; all fine. 6 pieces
- 516 **Shell Cameos.** One of a Lady ; her head wreathed with a vine and clusters of grapes ; and one of flowers and butterflies ; extremely beautiful. 2 pieces
- 517 **Pearl Cameos.** Heads of Latona and Diana. Small ovals ; largest diameter 1 inch ; very beautiful. 2 pieces
- 518 **Pearl Cameos.** Male Heads—faces in Masks ; smaller. 2 pieces
- 519 **Pearl Cameos.** Male and Female Head, in Masks. 2 pieces
- 520 **Pearl Cameos.** Negro Head, and two others. 3 pieces
- 521 **Cameo Ring Stones.** Sardonyx—Female Head, crowned with a wreath ; 1 do., plain ; very fine. 2 pieces
- 522 **Cameo Ring Stones,** on ribbon jasper ; the heads white. Male and Female ; oval,  $\frac{3}{4}$ -inch diameter ; very fine. 2 pieces
- 523 **Cameo Ring Stones.** Onyx, small size ; Heads, equal to the Antique. 4 pieces
- 524 **Cameo Ring Stones.** Agates ; brown, with white figures, extremely fine. Female Heads ; oval,  $\frac{5}{8}$ -inch diameter ; a pair. 2 pieces
- 525 **Cameo Ring Stone.** Onyx. Head of M. Angelo ; diameter  $\frac{1}{2}$ -inch ; square stone ; very fine.

- 526 **Cameos** cut on Agates. Fine Male Busts; one with long beard. 2 pieces
- 527 **Stone Cameo**, with a Bust in rich robes and decorations; the figure shown to the waist; oval, size 1 inch.
- 528 **Cameo Ring Stones**, on white agates. Female Heads; a pair. 2 pieces
- 529 **Stone Cameo**. Male and Female Head. Medium size ring stones. 2 pieces

### Antique Seals.

NOTE.—As before, all are stones, except when otherwise mentioned.

- 530 **Etruscan Intaglio**. A horse running, victory flying over his head; rude execution on stone, resembling Jade.
- 531 **Etruscan Intaglio**. Figure seated before a Cippus, a cap and star before and behind, a cornucopia below; on a stone quite similar to last.
- NOTE.—The cap, with the star over it, is the sign of the twin-brothers, Castor and Pollux. They are always represented wearing this peculiar cap.
- 532 **Etruscan Intaglio**. An animal with two heads, having the appearance of running in opposite directions; one end is a goat, the other a wolf, on chaledony.
- 533 **Etruscan Intaglio**. A goat with the body of a fish (Capricorn); on white agate.
- 534 **Etruscan Intaglio**. Military trophy, resembling those we see on early Roman coins; on carnelian.
- 535 **Etruscan Intaglio**. Winged griffin, running at full speed; on carnelian.
- 536 **Etruscan Intaglio**. Mars fully armed, marching with his head turned back; carnelian.
- 537 **Etruscan Intaglio**. Eagle standing on a Cippus; on one side an ibis standing on a crater, on the other the Caduceus and something resembling a club; on chaledony.

- 538 **Etruscan** Intaglio. A Biga, the *horses* only discernable ; on light colored agate.
- 539 **Etruscan** Intaglio. Trophy, a man standing before it with his hands raised ; on brown agate.
- 540 **Etruscan** Intaglio. Hercules carrying a horse, the letters A Φ V Γ æ, as nearly as can be made out, are cut in two lines across the gem ; amethyst.
- 541 **Etruscan** Intaglio. A goat kneeling, a human head and other things not understood, fairly cut on the stone, red jasper with a vein of blue.
- 542 **Etruscan** Intaglio. A lion devouring a stag ; on agate.
- 543 **Etruscan** Intaglio. A lion springing upon the back of a stag, a star above ; on brown jasper.
- 544 **Etruscan** Intaglio. Winged figure standing, one hand raised, the other holding a cornucopia, at his feet a cock ; carnelian.
- 545 **Etruscan** Intaglio. Lion ; red jasper.
- 546 **Etruscan** Intaglio. Elephant ; red jasper.
- 547 **Etruscan** Intaglio. Fish ; red jasper.
- 548 **Etruscan** Intaglio. Man and bee ; red jasper.
- 549 **Etruscan** Intaglio. Mouse eating fruit ; onyx.
- 550 **Etruscan** Intaglio. Helmeted head of Pallas ; brown carnelian.
- 551 **Etruscan** Intaglio. Warrior standing, one hand resting on his spear ; onyx.
- 552 **Etruscan** Intaglio. Mailed head of a young man ; agate.
- 553 **Etruscan** Intaglio. Tall figure partially draped, one foot resting on a globe, the body bent forward as if in the act of sacrificing, a remarkably fine gem ; rock crystal.
- 554 **Etruscan** Intaglio. Serpent twining round an altar ; or it may be a trophy, as it is tall and has a cross near the top ; agate.

- 555 **Etruscan** Intaglio. Trophy, with unknown accessories ; a remarkably fine gem ; chalcedony.
- 556 **Etruscan** Intaglio. Man walking, some unknown implements in his hands ; chalcedony.
- 557 **Etruscan** Intaglio. Bird standing on some carefully cut implement of uncertain use ; it may be a club, or more likely a bottle, as this is often seen on ancient coins in the same connection ; cut in carnelian.
- 558 **Etruscan** Intaglio. Woman (priestess) seated ; sapphire.
- 559 **Etruscan** Intaglio. Woman (priestess) standing ; plasma.
- 560 **Etruscan** Intaglio. Young man walking, the objects in his hands unknown ; very fine ; green jasper.
- 561 **Etruscan** Intaglio. Head with flat cap or helmet, three letters ; very fine and interesting ; dark agate.
- 562 **Etruscan** Intaglio. Minerva holding a figure of victory ; brown jasper.
- 563 **Etruscan** Intaglio. Figure of a man standing, one hand rests on his spear, the other is extended holding a wreath (the civic crown) ; chalcedony.
- 564 **Etruscan** Intaglio. Figure seated, very interesting ; brown carnelian.
- 565 **Etruscan** Intaglio. Dog under a tree, looking up to some object held by a hand ; extremely fine ; red jasper.
- 566 **Etruscan** Intaglio. Two hands clasped ; yellow jasper.
- 567 **Etruscan** Intaglios. A pair of beautiful little gems, almost perfectly matched ; red jasper. 2 pieces.
- 568 **Etruscan** Intaglios. A pair, equally well matched ; carnelian. 2 pieces.
- 569 **Etruscan** Intaglios. Peacock and soldier standing ; green jasper. 2 pieces.
- 570 **Etruscan** Intaglio. Hand holding some unknown object, a bird standing on it ; fine and interesting ; rock crystal.

- 571 **Etruscan** Intaglios. All fine and distinct, and worthy of a full and separate description ; chalcedony, carnelian, and sardonyx. 5 pieces.
- 572 **Etruscan** Cameo. Well executed and preserved Heads, cut on striped jasper, one layer resembling meerschaum, well matched. 2 pieces.
- 573 **Egyptian** Double Intaglio. On one side a Scarabæus, on the other a Cynocephalus, pierced for a ring pin, and undoubtedly worn twenty-five hundred years ago ; sardonyx.
- 574 **Persian** Intaglio, Antique. Lion seated before object not understood ; red carnelian.
- 575 **Persian** Intaglio. Seal, with inscription in Persian characters on green jasper.
- 576 **Greek** Intaglio. Temple supported by two pillars, the presiding deity within, a winged figure sacrificing on the outside before an altar, two *Greek* letters ( $\Lambda$ .  $\text{A}$ .) below the temple ; extremely fine ; carnelian.
- 577 **Greek** Intaglio. Cupid holding a butterfly ; amethyst.
- 578 **Greek** Intaglio. Soldier leaning on a Clppus, his shield beside him ; very fine ; cut on chrysoprase.
- 578\* **Greek** Seal. Obv. cameo head, rev. intaglio ; with two other small but pretty Antiques. 3 pieces.
- 579 **Greek** Intaglio. Winged monster seated on his haunches ; carnelian.
- 580 **Greek** Intaglio. A dog saluting his master. The most noticeable accessory object on this gem is the *cap* on the end of a long pole, which the old Greek carries over his shoulder ; it is our cap of liberty, and the position is the same ; agate.
- 581 **Greek** Intaglio. Fish lying on the surface of the sea, a *trident* thrust into his back near the tail ; lapis lazuli.
- 582 **Greek** Intaglio. Young Heracles seated ; onyx.

- 583 **Greek** Intaglio. Heads; lapis lazuli and carnelian.  
2 pieces.
- 584 **Greek** Intaglio. Jupiter seated, at his feet an eagle;  
chalcedony.
- 585 **Greek** Intaglio. Cupid holding a butterfly; agate.
- 586 **Greek** Intaglio. A vase; carnelian.
- 587 **Greek** Intaglios. Bull, Wolf, Fame, Boar, Pomegranate,  
and other remarkable gems; of small size, but very  
beautiful. 10 pieces.
- 588 **Antique** Intaglio Heads, on green jasper; well matched.  
2 pieces.
- 589 **Antique** Intaglio Heads, on red carnelian; well  
matched. 2 pieces.
- 590 **Antique** Intaglio Head, smaller; on red carnelian;  
well matched. 2 pieces.
- 591 **Antique** Intaglios. Full-length figures of Fortune and  
Ceres (Mater Deus), well matched and extremely fine;  
red carnelian. 2 pieces.
- 592 **Antique** Heads, in red carnelian; 2 pairs (intaglios).  
4 pieces.
- 593 **Antique** Cameo Heads, in red carnelian; *extremely*  
fine, but requiring to be recut to make the edges per-  
fect; ovals, diameter 1 inch. 2 pieces.
- 594 **Antique** Intaglio Heads, red carnelian; a pair.  
2 pieces.
- 595 **Antique** Intaglio Heads, chalcedony; diameter 1 inch.  
2 pieces.
- 596 **Antique** Intaglio. Bust of a Philosopher, cut on white  
agate, one of the finest in the Collection; diameter  
1 inch.
- 597 **Antique** Intaglios. Bust of a Woman, Head on a  
Cippus inclosed in wreath; both cut on heliotrope,  
and fine. 2 pieces.

- 598 **Antique** Intaglio. Two Horses passing a Goal at full speed, their heads turned back. In a circle, formed by a vine-wreath; in deep red carnelian. One of the *gems* of the Collection. Diameter 1 inch.
- 599 **Antique** Cameo. Bust of Titus, and Companion—a pair. Cut on an extremely hard stone, much used by the ancients (the *Pietra Dura* of the Italians). Color light brown, one layer resembling meerschaum; diameter 1 inch. 2 pieces
- 600 **Antique** Cameos. Head of an Old Man, on reddish-brown agate; with Veiled Female Head, on a stone like that described in last No., nearly 1 inch in diameter; very fine. 2 pieces
- 601 **Antique** Cameo. Diademed Heads of Females, cut on chalcedony; only the base translucent; heads nearly white; not matched, but extremely desirable in a Collection. 2 pieces
- 602 **Antique** Cameos. Same material as No. 599. Male and Female Heads, in high relief; very fine; diameter 1 inch. 2 pieces
- 603 **Antique** Cameos; others of the same kind. Diademed Head, and Head of a Negro; not matched, but very fine stone, and desirable in a Cabinet. 2 pieces.
- 604 **Antique** Cameos. A selection of small Heads, forming an interesting variety of *stones* and *subjects*; all very fine. 10 pieces
- 605 **Antique** Cameos. Head of Mercury, and Companion; matched; agate, size  $\frac{3}{4}$ -inch. 2 pieces
- 606 **Antique** Cameos. Heads of Mars and Pallas, cut on ribbon jasper and agate, of three colors. The effect very striking; the pair admirably matched, and altogether equal to any lot in the Catalogue; about  $\frac{3}{4}$ -inch. 2 pieces
- 607 **Antique** Cameo. Venus Sleeping, uncovered by Vulcan. Cut on a fine purple and white agate. A *gem*.  $1\frac{1}{8} \times \frac{3}{4}$  inches.



- 608 **Antique** Cameo. Lions Reposing, one red, on white ground; one white, on transparent ground; and one on clear yellow carnelian. A trio of gems hardly to be equalled. 3 pieces
- 609 **Greek** Intaglio. Head of Jupiter in a coiffure of lion's skin. Red carnelian.
- 610 **Greek** Cameo. Head of the Sun (Apollo), full face—the head, opaque white; the ground, translucent brown stone. A gem.
- 611 **Greek** Cameos. Cupid riding a Sea-horse at full speed; white, on translucent ground. Another gem.
- 612 **Greek** Cameos. Fishes to right and left, an Eel between them, white, on a red ground; Bacchus, full face, red, on white ground; and Cupid and Lion, on a ground of pink-tinted translucent chalcedony. All extremely beautiful. 3 pieces
- 613 **Greek** Cameos. Two Cupids, one in a ear, the other drawing it, white agate; Owl standing, yellow chalcedony; Head on light brown agate; and two others, in white and red stones. A selection of rare quality. 5 pieces
- 614 **Antique** Stone Cameos. A selection of small Heads, forming an agreeable variety of colors, and all remarkably fine, challenging the closest inspection. 8 pieces
- 615 **Antique** Intaglios. Ulysses and his Dog; Roman Eagle between two Standards; the Shepherd Faustulus and two Goats; and Head, the last Etruscan; of even size ( $\frac{1}{2}$ -inch), and all fine. On carnelians and agates of various colors. 4 pieces
- 616 **Antique** Gems of very small size ( $\frac{1}{4}$ -inch), all very perfect and fine, round, and of an agreeable variety of colors. 6 pieces
- 617 **Antique** Intaglios. Capricornus; Ibis; Crowned Head; Laureated Head; Bare Head; and Roman Priest. On a variety of stones, of nearly uniform size ( $\frac{1}{8}$ -inch); entirely perfect and fine. 6 pieces

- 618 **Antique Stones** in various forms : one remarkable Intaglio, on which two Boys are contending for the Prize in Boxing ; full face of the Egyptian Isis, with the head veiled ; an Etruscan Cameo Head ; Laureated Head, with long rows of Curls ; Head of a Roman Lady ; and an Intaglio Diana, with a Deer beside her ;  $\frac{1}{4}$ -inch size. Carnelians and agates. 6 pieces
- 619 **Antique Cameos.** Minute Heads, on agates of different colors. 10 pieces
- 620 **Antique Cameos.** Fine Heads, on colored agates, about  $\frac{1}{8}$ -inch in size. A great variety. 10 pieces
- 621 **Splendid Bust of Arsinoe**, Queen of Egypt, cut on a purple tinted agate with a darker ground. The coif forms a mask, or face, above the face of the Queen ; the hair in long curls ; head laureated. Cameo, about 1 inch in diameter.
- 622 **Fine Cameo.** Woman and Eagle ; the woman looking over her shoulder at the bird, her robe forming a canopy over her head. White, on translucent ground ;  $1\frac{1}{4}$  inches.
- 623 **Cameo** on Jasper, with three colored layers ; two burning hearts in basso and alto relievo ; black and green on a brown ground ; very fine ; size  $1\frac{1}{4}$  inches.
- 624 **Cameo** Bust of a Female. Fine head in white eachaloung on transparent ground ; nearly two inches long.
- 625 **Cameo** Bust, with Pearl Necklace ; description similar to last ; about same size.
- 626 **Cameo** Bust of Minerva, cut on a stone with alternate layers of white and red ; the design is a head of the goddess wearing her helmet. The first layer of white is only used in the execution of the owl that adorns her helmet ; the red layer following the white furnishes the material for the helmet and also for the goddess' hair ; the clear face is the product of the second vein of white, retaining just enough of the red to tinge her cheek ; the ground of the second red following the white, the work of a De Mediei artist ; two-thirds of an inch long.

- 627 **Cameo** of the same period, and good companion to the one just described, making, together, a pair of exceeding beauty.
- 628 **Cameo** Bust of Diana on Onyx. The design is a bust of the goddess with a crescent and full quiver. The figure which stands out round and clear from the background is entirely white; a luminous brown from the first layer marking the crescent on her forehead, and the button on her shoulder. The jet black of the ground is softened by a thin intervening stratum of white; oval,  $\frac{3}{4}$  inch diameter, of the De Medici age.
- 629 **Cameo** of Diana, also on Onyx. Fine, but not equal to the preceding.
- 630 **Sardonyx** Cameo Ox, white on red ground (De Medici), one of the gems of the collection;  $\frac{7}{8}$  inch diameter.
- 631 **Onyx** Cameo Bust of Mercury, in the same magnificent style as those that precede it. Oval; 1 inch long.
- 632 **Antique** Cameo Head of the Emperor COMMODUS, in the character of Hercules; with the lion skin coil; very fine and valuable. On an agate, furnishing all the requisite colors for making the work effective. Long oval;  $\frac{7}{8}$  inch diameter.
- 633 **Antique** Cameo. Veiled head of a Roman lady, on a fine ribbon jasper of light color;  $\frac{3}{4}$  inch; very fine.
- 634 **Stone** Cameo Bust of a Roman lady, of the same size, color and style as the preceding; making a good companion to it.
- 635 **Cameo** Heads of the De Medician Age; equal to the Antique, and resembling them in their high polish and Archaic appearance. Bare head of Augustus Cæsar; of Sabina, wife of Hadrian; and two other Roman ladies, whose portraits are familiar on coins; light brown agates;  $\frac{3}{4}$  inch diameter. 4 pieces

- 636 **Cameo** Heads. Another selection of precisely the same character, two male and two female;  $\frac{3}{4}$  inch. 4 pieces
- 637 **Cameo** Heads, on colored agate, finer than last, but coming under the same general description; two male and two female; a very superior lot of 4 pieces
- 638 **Cameo** Heads and other subjects, on onyx, sardonyx, and highly colored agates; each piece worth a full description. Of even size (about  $\frac{5}{8}$  inch), De Medician. 6 pieces
- 639 **Onyx** Cameos, one a laureated head, the other a nude figure seated on the ground beside a helmet and shield; diameter  $\frac{3}{4}$  inch diameter. 2 pieces
- 640 **Onyx** Cameos. Small but very fine Heads, one a blackamoor. 6 pieces
- 641 **Agate** and **Onyx** Cameo Heads,  $\frac{1}{4}$  inch in diameter; very even in size, and remarkably fine (De Medician). 6 pieces
- 642 **Onyx** Cameos. Two with plain backgrounds, and two with a ring of white inclosing the heads; very fine and old. 4 pieces
- 643 **Old** Cameos and Intaglios. Head of Janus Bifrons; double cameo; (head on both sides); basket of flowers; bird, etc.; small size—all fine. 6 pieces
- 645 **Old** Cameo Heads. All fine ( $\frac{1}{4}$  inch). 6 pieces
- 645 **Antique** Intaglios and Modern Cameo gems; unequal sizes, but all small. 14 pieces
- 646 **Antique** Intaglios. Two birds, one a large peacock; head of Socrates; head of Jupiter; Etrusean, on green stone; and one ditto, on red emeraldian; very fine lot. 5 pieces
- 647 **Old** Seal Stones. Different styles. 3 pieces
- NOTE.—The following 16 lots are selected and matched *pairs* suitable for rings or buttons. They are the best work of the Medician Age;
- 648 **Cameo** Heads. White and brown agates. 2 pieces

- 649 **Cameo Heads.** White and brown agates. 2 pieces
- 650 **Cameo Heads.** Sardonyx. 2 pieces
- 651 **Cameo Heads.** Fawn-colored agates. 2 pieces
- 652 **Cameo Heads.** Blackamoors, on light ground. 2 pieces
- 653 **Cameo Heads.** Blackamoors, on light ground. 2 pieces
- 654 **Cameo Heads.** Three colors. 2 pieces
- 655 **Cameo Heads.** Three colors. 2 pieces
- 656 **Cameo Heads.** Light agates. 2 pieces
- 657 **Cameo Heads.** Light agates. 2 pieces
- 658 **Cameo Heads.** White and pink agates. 2 pieces
- 659 **Cameo Heads.** Onyx. 2 pieces
- 660 **Cameo Heads.** Pale sardonyx. 2 pieces
- 661 **Cameo Heads.** Pale agates. 2 pieces
- 662 **Cameo Heads.** Pale agates. 2 pieces
- 663 **Cameo Heads.** Pale agates.
- 664 **Buck's-Horn and Mother-of-Pearl Cameos.** Group of Deer ; and Diana and her Hounds. 2 pieces
- 665 **Scotch Pebble Mosaics.** Silver backs. 7 pieces
- 665a **Scotch Pebble Brooch.** Silver back ; fine.
- 666 **Scotch Pebble Plaid Mosaic.** Stone back ; fine.
- 667 **Bracelet.** Carnelian and agate, with silver joints.
- 668 **Bracelet,** cut from conch shell, with two Charms.
- 669 **Coral Cameo Head.** "Sleeping Cherub."
- 670 **Coral Cameo Bust.** "A Cherub."

NOTE.—Attention is called to the spirited expression given by the sculptor to the following Heads, which were made in Naples expressly for the owner, as specimens of sculpture in *Lava*, *Shell*, and *Coral* :

- 671 **Dogs' Heads,** cut on pink conch shell ; very fine. Matched pair.

- 672 **Dog's Head.** Compact lava, pure white.
- 673 **Dog's Head.** Conch shell.
- 674 **Dogs' Heads.** White lava. Matched pair.
- 675 **Dogs' Heads.** Conch shell. Matched pair.
- 676 **Dog's Head.** White lava.
- 677 **Dogs' Heads.** Red coral. Matched pair.
- 678 **Dog's Head.** Red coral; very curious.
- 679 **Dog's Head.** Red coral; also curious.
- 680 **Dog's Head.** Red coral; polished; very fine.
- 681 **Dogs' Heads.** Red coral; a matched pair.
- 682 **Dogs' Heads.** Brown lava. Matched pair.
- 683 **Human Skull.** White lava.
- 684 **Dogs' Heads.** White lava. Matched pair.
- 685 **Dogs' Heads.** Brown lava. Matched pair.
- 685\* **Dogs' Heads,** in matched pairs. Two in white lava;  
two in brown; and two in conch shell. The lot.  
12 pieces

### Fine Gold Rings, Pins, Brooches, etc.

NOTE.—The following pieces, unless otherwise mentioned, have old settings, some of the last century.

- 686 **Pearl Ring.** Antique setting.
- 687 **Mosaic Ring.** Antique setting.
- 688 **Turquoise and Pearl.** Antique setting.
- 689 **Pearl Mourning Ring.** Antique; fine.
- 690 **Turquoise.** Plain Old Ring.
- 691 **Ruby and Turquoise.** Antique; fine.
- 692 **Stone Cameo and Pearl.** Antique setting.
- 693 **Onyx Cameo.** Antique setting; heavy.
- 694 **Pearl Ring.** Plain old setting.
- 695 **Scarf Ring.** Turquoise and garnet; heavy.

- 696 **Pearl Brooch.** Solid back ; double row of pearls.
- 697 **Pearl Bracelets.** Braided hair bands ; a pair ; heavy clasps.
- 698 **Pearl Bracelets.** Braided hair bands ; extra heavy clasps.
- 699 **Enameled Sleeve Buttons,** with illustrations of "Æsop's Fables;" very fine ; Antique ; a pair.
- 700 **Double Coral Cameo Locket.** Filagree work of the last century ; very finely cut heads ; 22 carat gold.
- 701 **Miniature Locket,** with exquisitely fine Bust of Ferdinand I., King of Naples, painted on ivory ; very fine mounting.
- 702 **Turquoise and Pearl Pin,** inclosing hair.
- 703 **Pearl Pin.** Same as last.
- 704 **Pearl Scarf Pin.** Small.
- 705 **Pearl Pin.** Quite round, short pin.
- 706 **Stone Cameo and Pearl Pin.** Small size ; very fine stone ; old setting.
- 707 **Scarf Pin.** Fine Cameo, of Mediæval work.
- 708 **Brooch,** with very fine Intaglio Head of Hymen, in carnelian ; filagree work, and coral mounting ; very large and heavy.
- 709 **Scarf-Pin.** Pearl and blue enameled ; a specimen of Early Norman work.
- 710 **Watch Seal.** Yellow Carnelian Intaglio ; lion rampant ; old setting.
- 711 **Watch Seal.** Fine Stone Intaglio head of Young Hereules. *Antique* ; diameter  $1\frac{1}{8}$  inch.
- 712 **Watch Seal.** Fine Antique Intaglio. Neptune on a shell ; on white carnelian ; old mounting ; size 1 inch.
- 713 **Antique Ring.** Fine *Etruscan* Cameo Stone, a mask on agate ; extra heavy mounting.

- 714 **Antique Ring.** Etruscan Cameo of rare excellence ; opaque head on chalcedony ground ; in old mounting ; once set with brilliants ; a gem ; size of stone  $1\frac{1}{4}$  inch.
- 715 **Intaglio Carnelian Ring.** Very fine Mediæval head ; old mounting.
- 716 **Intaglio Carnelian Ring.** Naked bust of Cicero ; Mediæval, of the most excellent work ; very heavy mounting.
- 717 **Miniature Ring.** Inclosing a "Gem of Perugino," painted on ivory ; purchased in Perugia ; old mounting.
- 718 **Intaglio Ring.** Head of BURKE on chalcedony ; modern, but beautifully engraved ; diameter 1 inch.
- 719 **Silver Napkin Ring,** with Cameo Head of Medusa cut on purple agate. Mediæval ; *superb* ; sterling silver, weight  $2\frac{1}{2}$  ounces ; diameter of stone  $1\frac{1}{2}$  inch.
- 720 **Pearl and Stone Cameo Ring.** Extremely fine ; old mounting.
- 721 **Antique Ring.** Greek Intaglio head and inscription, cut on red carnelian ; one of the finest Antiques in the Collection.
- 722 **Antique Ring.** Intaglio head of Augustus Cæsar, on carnelian, in the old mounting ; very fine.
- 723 **Antique Ring.** Winged figure crowning the god Terminus ; other figures on red carnelian, in old setting ; enamelled. The Intaglio was found at Pompeii.
- 724 **Pearl Ring,** with Etruscan Intaglio ; extremely fine.
- 725 **Antique Ring.** Victory in a Quadriga, a large bird flying over the horses ; Intaglio on onyx ; an Antique known to have been preserved, with others in this Collection, for centuries, in an Italian monastery.

NOTE.—The rings and buttons that follow down to No. 818, inclusive, and made for the owner of this Collection from original and classical designs, are those to which allusion was made in the preface ; and, as previously stated, are 18-karat red gold, heavy, and of the best workmanship,



The stones are mostly Antique—those that are not are gems of the “de Medici” period, rivalling the work of the Ancients.

To avoid so many repetitions, the title to the rings is omitted in the descriptions.

NOTE.—Particular attention is called to the settings, as well as to the stones, in these pieces.

- 726 **Cameo.** White opaque head on translucent ground, “de Medici;” diameter of stone  $1\frac{1}{8}$  inch; extra heavy.
- 727 **Intaglio.** Beautiful female head on yellow carnelian, one of the finest in the Collection; diameter 1 inch.
- 728 **Intaglio.** Bare bust of Cicero; Antique; diameter 1 inch.
- 729 **Cameo.** Fine Antique Head on brown agate, the ground contrasting with the head; 1 inch.
- 730 **Intaglio.** Bust of a Bacchante on sard; diameter 1 inch; mounting very heavy.
- 731 **Intaglio.** Lion walking; fine Antique, on deep red carnelian; diameter  $\frac{1}{2}$ -inch.
- 732 **Intaglio.** Dog, on pale agate; diameter  $\frac{1}{2}$ -inch.
- 733 **Intaglio** on red sard, with streaks of light, a Grasshopper; Etruscan; as perfect and beautiful as when first made; diameter  $\frac{1}{2}$ -inch.
- 734 **Intaglio.** Helmeted head on white agate; *Antique* Greek; diameter  $\frac{3}{4}$ -inch.
- 735 **Cameo.** Bust of Diana, white on pink; a splendid sardonyx, extra mounting; diameter 1 inch.
- 736 **Cameo.** Full-length figure in a toga, white on brown agate, setting 4 thick gold wires united; very heavy. Antique, and very fine.
- 737 **Intaglio.** Jupiter, in the disguise of a bull, carrying off Europa, cut on translucent heliotrope, of large size (1 inch); elegant mounting, and altogether superb.
- 738 **Intaglio.** Cornueopiæ, on chalcedony. Makes a beautiful impression.

- 739 **Intaglio.** Full-length figure of Hope, on pink chaledony.
- 740 **Cameo.** Bare head, on onyx; extremely fine; diameter 1 inch.
- 741 **Cameo.** Bust to the waist, clasped hands, on sardonyx; a work of the age of Cosmo II.; *extremely* fine; extra heavy mounting; diameter 1 inch.
- 742 **Intaglio.** Leda and the Swan, on chaledony, round stone; 1 inch diameter; makes a very fine impression.
- 743 **Cameo Sleeve Buttons.** Male and Female heads, on sardonyx; "de Medici" work, in heavy mountings; a pair.
- 744 **Intaglio Sleeve Buttons.** Heads of Young Hercules to right and left, on yellow and white carnelian; extremely fine pair; diameter 1¼-inch.
- 745 **Intaglio Sleeve Buttons.** Heads on red carnelian, oval in square box mounting; fine pair.
- 746 **Cameo.** *Antique* Mask, on white and brown agate; diameter ½-inch; fine ring.
- 747 **Cameo.** *Antique* Head bare, white and brown agate, one of the most delicately cut stones in the Collection; diameter ½-inch.
- 748 **Cameo.** *Antique.* Cupid and Venus, figures opaque, white on chaledony; same size as last; a *gem.* *One of the most admired in the Collection.*
- 749 **Intaglio.** Head of Augustus Caesar, *Antique*; onyx; ½-inch.
- 750 **Cameo.** Child and Butterfly. *Antique*; agate; ½-in.
- 751 **Cameo.** Female Head in Alto-relievo, pink and white sardonyx, "de Medici" work; diameter ½-inch.
- 752 **Cameo.** Head of a Pope, on onyx; diameter ½-inch.
- 753 **Intaglio.** Head of Jupiter, on deep red carnelian, the stone round and filled by the head; equal to the *Antique*; diameter ¾-inch. Especial attention is called to this exquisite cutting.

- 754 **Intaglio.** Winged figure carrying a basket of fruit and dead bird; Greek *Antique*; deep red sard, highly polished in every part; diameter nearly 1 inch.
- 755 **Cameo.** *Etruscan* Head, opaque on translucent orange-colored agate; extra mounting; extremely fine ring; 1 inch in size.
- 756 **Intaglio.** *Antique* Head, on yellow carnelian; diameter 1 inch.
- 757 **Intaglio.** Bare Bust, on sardonyx; diameter 1 inch.
- 758 **Intaglio.** Diademed head, on sard, "de Medici" period; diameter 1 inch; extremely fine.
- 759 **Cameo Buttons.** Dogs, on colored agate, the colors producing a fine effect; Alto-relievo; fine pair.
- 760 **Intaglio Buttons.** *Antique* Heads, on sard, male and female; diameter 1 inch.
- 761 **Cameo.** *Antique*, Bust, black head, a remarkable stone, the colors favoring the production of a *unique* head; diameter  $\frac{3}{4}$ -inch.
- 762 **Intaglio.** Mercury accompanied by a Cock, *Antique* and remarkably fine; sard; diameter over  $\frac{1}{2}$ -inch.
- 763 **Intaglio.** Head of Socrates, on sardonyx, *Antique* and fine; diameter  $\frac{3}{4}$ -inch.
- 764 **Intaglio.** Woman's head on the body of a lion; cut on onyx, and *Antique*; diameter  $\frac{1}{2}$ -inch.
- 765 **Intaglio.** Bare Head, on blue jasper. "de Medici;" diameter  $\frac{3}{4}$ -inch. Very rare stone, and beautifully engraved.
- 766 **Intaglio.** Indian Seal, (Assamese.) Red carnelian.
- 767 **Intaglio Buttons.** Figures of Hope and Pomona; on sardonyx; very fine cutting. Oval stones, square mounting.  $\frac{3}{4}$ -inch size.
- 768 **Cameo Buttons.** Owls, on Chalcedony; the bird opaque; the ground translucent. Taken out of *Antique* braeelets preserved in a monastery. A pair.

- 769 **Intaglio.** Greek Antique on Plasma. A naked Titan carrying a sword, and pointing downward with an arrow; his posture stooping; inscription "TITE." Very fine and valuable ring.
- 770 **Intaglio.** Greek Antique. A naked Titan seated; on red carnelian. Size  $\frac{1}{2}$ -inch.
- 771 **Intaglio.** Greek Antique. Taras riding a Centaur. Size  $\frac{1}{2}$  inch.
- 772 **Intaglio.** Greek Antique. Capricorn, Dolphin, etc. on jasper.  $\frac{1}{2}$  inch.
- 773 **Cameo.** Greek Antique. Head; red on white translucent ground.  $\frac{1}{2}$  inch. Very fine. Attention is called to the spirited expression of this face.
- 774 **Intaglio Buttons.** Hound and Stag; on deep red carnelian; oval, mounted on square plates. Very elegant pair.
- 775 **Intaglio Buttons.** Roman Busts; on deep red carnelian; 1 inch. Extremely fine pair; of the "de Medici" age.
- 776 **Intaglio.** Harpoerates; nude to the waist; "de Medici." Exquisite work.  $\frac{1}{2}$  inch.
- 777 **Intaglio.** Shepherd surrounded by his flock; wild animals mingling with them, tamed by the music of his pipe; fine red carnelian, nearly round; diameter  $\frac{3}{4}$ -inch.
- 778 **Cameo** Antique. Diademed Head,  $\frac{3}{4}$  face; agate;  $\frac{7}{8}$ -inch. Extra fine stone and mounting.
- 779 **Intaglio.** Antique. Laureated Head; on jasper.  $\frac{3}{4}$ -inch in diameter.
- 780 **Intaglio.** Antique. Worship of Priapus (?) An exceedingly fine stone. Elegantly mounted.  $\frac{3}{4}$ -inch in diameter.
- 781 **Intaglio.** Antique. Sard. Seated Figure. One of the best in the Catalogue.  $\frac{5}{8}$ -inch.

- 782 **Intaglio.** Antique. Laureated Head. One of the Cæsars on red carnelian. Very fine.  $\frac{5}{8}$ -inch.
- 783 **Intaglio.** Antique, from Pompeii; on sard; eurous figure standing by a Cippus; a shield on the ground: every way remarkable; the mounting enamelled. Valuable.
- 784 **Intaglio.** Antique on sard. Two altars; a club leaning against one; figure in a stola, standing between the altars.  $\frac{3}{4}$ -inch. Extremely fine.
- 785 **Intaglio.** Antique Greek. Two Heads; Jugata; very heavy mounting;  $\frac{5}{8}$ -inch; carnelian.
- 786 **Intaglio.** Bare Head; on red jasper. Very fine.  $\frac{3}{4}$ -inch.
- 787 **Intaglio.** Togated bust on ash colored agate; "de Medici."  $\frac{3}{4}$ -inch.
- 788 **Intaglio.** Antique Greek. Classical subject, Greek inscription; carnelian, oval and concave.  $\frac{3}{4}$ -inch in largest diameter. *Remarkably fine.*
- 789 **Intaglio Buttons.** Setter and Bird; square mounting. Extremely fine pair; size of buttons 1 inch.
- 790 **Cameo.** Antique. Female Head on onyx; elaborately coiffed; remarkably fine.  $\frac{5}{8}$ -inch.
- 791 **Cameo.** Cupid Drinking. An Antique on sardonyx; mounting enamelled.  $\frac{1}{2}$  inch.
- 792 **Intaglio.** Antique, laureated head on agate; fine mounting.  $\frac{5}{8}$ -inch.
- 793 **Cameo Buttons.** Antique Heads on fine agate; an extremely fine pair. Size, 1 inch. Oval.
- 794 **Intaglio.** Bust of Byron; on chalcedony. Modern. Fine.
- 795 **Intaglio.** Bust of Admiral Nelson; on chalcedony. Modern. Fine.
- 796 **Cameo.** Female Bust on tinted stone; 3 colors; one of the finest in the Collection.  $\frac{3}{4}$ -inch. "de Medici."

- 797 **Cameo.** Bust of young Hercules; a good companion to the last. Equally fine. Mediaeval.
- 798 **Intaglio.** Antique, on striped agate. A Priest performing religious rites.  $\frac{1}{2}$ -inch.
- 799 **Intaglio.** Antique, on deep red sardonyx. Dancing Girl with a Cithera.
- 800 **Intaglio.** The Driver of the Steeds of the Sun. The same figure seen on many coins of the 2d and 3rd centuries, with the legend, "Oriens Aug.;" Antique on heliotrope.  $\frac{1}{2}$  inch.
- 801 **Intaglio.** Etruscan. A Pine Tree; resembles the Pine on the Massachusetts Coins; one of the most perfect Etruscans in the catalogue;  $\frac{5}{8}$ -inch; red carnelian.
- 802 **Intaglio.** Etruscan. Heracles, on Carbuncle. A large fine stone; elegantly mounted.
- 803 **Intaglio Buttons.** Sporting Dogs. "Take Heed;" on red carnelian; heavy setting. Modern. A pair.
- 804 **Intaglio.** Etruscan. An Ox; on red carnelian. Extremely fine.
- 805 **Intaglio.** Etruscan. With inscription; young head on red jasper. Very fine.
- 806 **Intaglio.** Antique Roman on sard. Priestess performing religious rites. Extremely beautiful; diameter  $\frac{1}{2}$  inch.
- 807 **Intaglio.** Etruscan. Cupid catching a Butterfly; round carnelian; diameter  $\frac{1}{2}$  inch.
- 808 **Intaglio.** Etruscan. Pale yellow carnelian; diameter  $\frac{1}{2}$  inch.
- 809 **Intaglio.** Antique Head of Janus Bifrons, on carnelian.
- 810 **Intaglio.** Etruscan. A Bird standing, on carnelian. Very fine.
- 811 **Intaglio.** Antique Greek. Head of Socrates, on heliotrope. Very small, but extremely fine.

- 812 **Intaglio.** Etruscan. Head wearing a cap. Curious.
- 813 **Intaglio.** Antique, Greek. Head of Homer, on sard.  $\frac{1}{2}$ -inch.
- 814 **Intaglio.** Antique. A Bull, on heliotrope, finely spotted. One of the *gems* of the Collection.
- 815 **Intaglio.** Antique. Roman Soldier with Arms and the Paludamentum (soldier's cloak). Carnelian.
- 816 **Intaglio.** Etruscan. A Vase, on sardonyx. Extremely fine.
- 817 **Intaglio.** Antique. Phæton pointing to the Sun; a whip in his left hand, on heliotrope. See No. 800.
- 818 **Intaglio.** Roman Antique. A Sow, on agate, small oval. Extremely fine and valuable.

NOTE.—Before the battle between the Horatii and the Curiatii began, the Kings of Alba and Rome made a treaty, which served as a pattern for most of the treaties that were ever after made by the Romans.

The pater patratus of the Romans read the articles of the Convention in the presence of the Albans, and then expressed himself thus; "*Hear, O JUPITER; hear, O pater patratus of the Alban people; hear, O Alban people; of these articles, as I have now read them out of those waven tablets, without fraud or deceit, the Roman people will never be the first violators. If they should violate them by public authority and by fraud, may JUPITER, at that instant, strike them as I shall now strike this victim.*" At which words he killed a sow, which was to be offered up as a sacrifice in confirmation of the treaty.

With this ends that portion of the Collection referred to in Note to No. 725. The few that follow are all in *old* mountings.

NOTE.—The stones in the following settings are either Antique or Mediæval.

- 819 **Onyx Cameo Ring.** The Laocoon. Size of stone  $\frac{7}{8}$ -inch; very fine. Gold.
- 820 **Carnelian Cameo Ring.** Antique. Gold.
- 821 **Carnelian Intaglio Ring.** Fine Bust. Gold.
- 822 **Carnelian Intaglio Ring.** Bust of William Shakespeare, in old bronze mounting.

- 823 **Agate** Intaglio Ring. Antique Head. Gold.
- 824 **Pearl** and Cameo Pin. Fine Head in Sardonyx. The pearls very even and white; heavy solid gold back.
- 825 **Pearl** and Cameo Pin. Fine Antique Head, on chalcedony; a border of jet stones around the pearls; solid gold back.
- 826 **Carnelian** Pin. A gold-mounted Stone Cameo; Head inserted in its perforated centre. All very fine and unique; 1 inch in diameter.
- 827 **Pearl** Enameled Pin, with Antique Mask; cut on white and red stone; round and convex; solid gold. Extremely beautiful.
- 828 **Pearl** Amethyst Pin, with stone cameo centre. Gold mounted; fine.
- 829 **Pearl** Cameo Pin. Rose-colored Head, on fine tinted chalcedony; double row of pearls; solid gold back. A gem.
- 830 **Pearl** Cameo Pin. Fine white opaque Head on chalcedony; solid gold back.
- 831 **Pearl** Cameo Locket Pin. Solid gold; very fine altogether.
- 832 **Stone** Cameo Pin. Rare old mounting in Antique style; fine gold.
- 833 **Stone** Cameo Locket, with amethysts and pearls; set in gold. A gem.
- 834 **Pearl** Cameo Pin. Fine Head on white stone; small size; gold. Extremely fine.
- 835 **Antique** Scarf Pin. Etruscan. Cameo Head, cut on a *ruby*, surrounded with pearls; set in solid gold.
- 836 **Amethyst** Scarf Pin. "de Medici." Cameo Head of a Lady. Extremely fine; gold mounting.
- 837 **Antique** Pin. Eagle on a Thunderbolt, a Crown in his Beak. A fine Antique Intaglio on chalcedony; gold mounting.



- 837*a* **Filagree** Ear-Rings. Very beautiful; fine gold. A pair. Early Norman work.
- 837*b* **Enameled** Rings. One with a Butterfly; a Wreath of Flowers encircling the other. Both fine gold.  
2 pieces
- 837*c* **Pearl** Enameled Ring. The pearls large and white; fine gold. Very heavy.
- 837*d* **Antique** Cameo and Coral Pin. Solid gold back; fine.
- 838 **Old Gold** Rings, containing stones of various qualities; none of much value, except for their antiquity.  
6 pieces
- 839 **Old Gold** Watch Seal and Pin. 2 pieces
- 840 **Stone Cameo** Pin and Intaglio Watch Seal, the last gold mounted; pin, silver gilt. Set in Rome. 2 pieces

### Scarf and Finger Rings.

NOTE.—In the following mountings, the Cameos and Intaglios, both in shell and stone, are mostly of Mediæval work; a few are Antique. Those in Lava are mostly modern.

- 841 **Shell** Cameo. Mounted in Tortoise-shell Scarf ring.
- 842 **Shell** Cameo. Mounted in Tortoise-shell Scarf ring.
- 843 **Shell** Cameo. Mounted in Tortoise-shell Scarf ring.
- 844 **Shell** Cameo. Mounted in Tortoise-shell Scarf ring.
- 845 **Coral** Cameo. Mounted in Tortoise-shell Scarf ring.  
Female Head. Mediæval.
- 846 **Coral** Cameo. Mounted in Tortoise-shell Scarf ring.  
Female Bust. Mediæval.
- 847 **Coral**. Mounted in Tortoise-shell Scarf ring. Dog's Head. Modern.
- 848 **Coral**. Mounted in Tortoise-shell Scarf ring. Dog's Head. Modern.
- 849 **Onyx Intaglio**. Mounted in Tortoise-shell Finger ring. Shield. Modern.

- 849a **Cameo** Stone. Mounted in Tortoise-shell Finger ring. Square Head.
- 849b **Antique** Stone Intaglio. Mounted in Tortoise-shell Finger ring. A Cock.
- 849c **Carnelian** Intaglio. Mounted in Tortoise-shell Finger ring. Oblong Head.
- 849d **Antique** Intaglio. Mounted in Tortoise-shell Finger ring. Oval Head, carnelian.
- 849e **Antique** Intaglio. Mounted in Tortoise-shell Finger ring. Oval Head, carnelian.
- 849f **Antique** Intaglio. Mounted in Tortoise-shell Finger ring. Oval Head, carnelian.
- 849g **Antique** Intaglio. Mounted in Tortoise-shell Finger ring. Oval Head, pale carnelian.
- 849h **Antique** Intaglio. Mounted in Tortoise-shell Finger ring. Oval Head, carnelian.
- 849i **Antique** Intaglio. Mounted in Tortoise-shell Finger ring. Oval Head, carnelian.
- 849j **Antique** Intaglio. Mounted in Tortoise-shell Finger ring. Oval Head, Carnelian.
- 849k **Antique** Intaglio. Mounted in Tortoise-shell Finger ring. Oval Female Head, carnelian.
- 849l **Finger Rings**. Mounted in Tortoise-shell. 3 pieces
- 849m **Finger Rings**. Mounted in Tortoise-shell. 3 pieces

### Old Engravings.

- 850 **The Months**. Illustrated by **MARIETTE**. "Avec privilege du Roi." A series; one wanting. (11)
- 851 **Labors of Hercules**. A Series by **SANDRAKT**. Very fine. (14)
- 852 **Illustrations of 22 Frescoes**. By **CORREGGIO**, with Text in French. Very fine. Sold as 1 lot.

- 853 **Engravings**, by various hands : FERDINAND I., of Spain, by Rosapina; PIETRO MARTINI, by Parini; PROFETA GIOSE IN ORIOZANE, by Rados, (painted by B. West, 1775); CONTEMPLATION, by Vedovato, (painted by Cipriani); and four others.
- 854 **Raphael Morghen.** PIUS SEPTIMUS; and POESIE. (2)
- 855 **Raphael Morghen.** POESIE, (large plate), size 17 x 12; and LA PEINTURE, a companion picture. (2)
- 856 **Raphael Morghen.** "MATER PULCRÆ DILECTIONIS." Size of plate, 19 x 13.
- 857 **Raphael Morghen.** "PARCE SOMNUM RUMPERE HORIZONTÆ." Size 14 x 13.
- 858 **The Lacedemonian Mother** presenting the buckler to her son, 24 x 18; Eve presenting the Apple to Adam, (of the same size); and five old pictures of smaller size. (7)
- 859 **Copies** of Antique Frescoes. (3)
- 860 **Le Delire D'Amour**, by DESNOYERS. Fine old colored engraving.
- 861 **Water Colors.** "Admiration" and "Contemplation." Pretty companion pictures. Originals. (2)
- 862 **Designs and Colored Engravings**; the former originals, by Adams. (12)
- 863 **Designs on Parchment**, originals of much merit; purchased in Florence, where they were highly esteemed; stained and injured, yet interesting and valuable; signed and dated (1602.) (6)
- 864 **Paintings on Parchment**, done in dry colors, and in a very superior manner; signed "Chandeleda, 1791;" subject: Two male busts, 7 x 6 inches. (2)
- 865 **Miniatures in Water Colors**, by "Fribourg, 1817." Subject: A Lady seated; and half length of a Gentleman. Very fine. (2)
- 866 **Miniature in Water Colors.** Half length of a Lady. 12 x 10.

- 867 **Miniature** in Water Colors. Bust of a Gentleman, in oak frame. 7 x 4.
- 868 **Small Painting** on Brass. Landscape. Very old and exquisitely executed.
- 869 **Water Color.** Landscape. 12 x 14 inches.
- 870 **Colored Engraving.** "Le Sommeil de Jesus." After Raphael.
- 871 **Colored Engravings.** "Hero Pleurant Leandre," and "Psyche," a Companion piece; Antiques. (2)
- 872 **Miniatures** on Parchment. Cut from old Missals; colored engravings on parchment, and curious illuminations on paper from the same source. Mostly Mediæval work. (9)
- 873 **Engravings** of Classical Subjects, mounted on cloth and stained; original impressions from old and rare plates; some of the great painters represented, are Andrea del Sarto, Guido Reni, Peter Cortona, Lucca Giordano, Carlo Maratta, and Salvator Rosa. The plates were engraved by Eredi and Secchi; the paper is sound on most of the plates, and in a condition to clean with success. Size about 19 x 15. (16)
- 874 **Engravings** in Portfolio. In the lot are two by Raphael Morghen. (17)
- 875 **Engravings.** Old, and in some instances injured, but all interesting. (9)
- 876 **Engravings.** Many sizes; generally of little value. 50 pieces.
- 877 **Large Engraving** in four sections. Hercules on his Return from the Hesperides. Size about 3 x 4 feet.
- 878 **Portfolio** of old Engravings. About 100 pieces.
- 879 **The Judgment of Paris.** Proof Engraving. Very beautiful.
- 880
- 881 **Apollo crowning Truth.** Colored Antique. Engraved by Clement.

## Water-Color Paintings.

Called *Gonasehe*, being Views from the Bay of Naples. All finely framed.

- 881*a* 1 pair, small square.  
 881*b* 1 “ “  
 881*c* 1 “ large oval.  
 881*d* 1 “ “  
 881*e* 1 “ very large square.  
 881*f* 1 “ “ “

## Engraving on Copper Plates.

NOTE. For explanation of these, reference is made in the Preface.

- 881*g* 1 plate 8 x 13 inches, containing 10 views in Pisa, Italy.  
 881*h* 1 “ “ “ “ 16 “ Italy.  
 881*i* 1 “ “ “ “ 14 “ Verona. “  
 881*j* 1 “ “ “ “ 16 “ Sicily.  
 881*k* 1 “ “ “ “ 14 “ Italy.  
 881*l* 1 plate 10 x 14 of “Pietro Micca.” Very fine.  
 881*m* 1 plate 12 x 18, Madonna. Very fine.  
 881*n* 1 “ “ of Napoleon I. being blessed by Pope Pius VII., on the plate are 27 portrait figures. Very fine.  
 881*o* I plate 14 x 18 of “Maria, SS di Sotto Gli Organi.” Fine.  
 881*p* 1 “ 18 x 16 of Holy Family.  
 881*q* 1 “ 12 x 14. Titian’s Venus. Remarkably fine.  
 881*r* 1 “ 8 x 13. Containing portraits of Victor Emanuel, Louis Napoleon, Cavour, and Garibaldi.  
 881*s* 1 plate 8 x 12 of the Monument of B. Bandinelli, date 1569 A.D.  
 881*t* 1 plate 8 x 12 of the Monument of Cosmos de Medici.  
 881*u* 1 copper Intaglio, 6 x 4 inches, and  $\frac{1}{2}$  inch thick. Classical design. Fine.  
 881*v* 1 Iron Intaglio, 6 x 4. Sacred subject.

**Old Oil Paintings. (Mostly in old frames.)**

- 882 **Christ** at Gethsemane. In carved panel.
- 883 **Landscape.** The Page. On panel. Very old.
- 884 **Landscape.** Flemish.
- 885 **Bust.** "Madonna Adorata."
- 886 **Bust.** "Uno Filosofo."
- 887 **Bust.** The Sword and Book.
- 888 **St. John** in Patmos.
- 889 **St. Catharine.** Crown and Nimbus.
- 890 **The Flute Player.**
- 891 **St. Michael,** the Archangel.
- 892 **St. Mark,** the Evangelist.
- 893 **La Vanita.** Woman holding a mirror.
- 894 **Di Felice Reposo.** St. Antonia.
- 895 **Bust.** Fine Head.
- 896 **Lucretia.** The Roman Lady.
- 897 **Venus.** Italian Painting.
- 898 **Lot and his Daughters.** Very fine Italian.
- 899 **Bust of an Old Man.** Spagnaletto.
- 900 **Bust.** Philosopher.
- 901 **Un Evangelista.** Italian.
- 902 **St. Anthony.** Italian.
- 903 **A Magdalen.**
- 904 **Peasant and Dog.**
- 905 **Ecce Homo.**
- 906 **Mars enamored.**
- 907 **Holy Family.** Italian. On panel.
- 908 **David** playing before Saul.
- 909 **Christ** bearing the Cross. On panel.
- 910 **Landscape.** Figures and Ruins.
- 911 **The Sybil.** A Sketch.
- 912 **Head of a Saint.**
- 913 **Head of the Virgin,** on copper. Byzantine.

- 914 **Landscape.**  
 915 **Bacchante.** Italian.  
 916 **Bust of Christ.**  
 917 **Madonna.** Very fine head. Gold rays.  
 918 **St. Lorenzo.** Italian.  
 919 **St. Francis.** Italian.  
 920 **Holy Family.** Italian.  
 921 **Madonna Dolorosa.**  
 922 **Candle-light.** Saint before a Crucifix.  
 923 **Large Panel.** Classical subject.  
 924 **Madonna.** Italian.  
 925 **Abigail meeting David.**  
 926 **St. Peter.** Italian.  
 927 **St. Cecilia.**  
 928 **Bust.** A Don.  
 929 **St. John,** the Evangelist.  
 930 **Madonna.** Italian.  
 931 **Sybil,** on Panel.  
 932 **Diogenes** before Alexander.  
 933 **Europa** and Companion. 2 pieces.  
 934 **Seaport,** on Panel.  
 935 **Flower Piece.**  
 936 **Landscape** and Interior. Same size. 2 pieces.  
 937 **Madonna.**  
 938 **Small Cabinet Paintings.** Subjects from Dante. 2 pieces.  
 939 **Bambino.** Fine Head.  
 940 **Mary Magdalen.**  
 941 **Martyr,** on Copper.  
 942 **Saint.**  
 943 **Lucretia Borgia.** Small Panel.  
 944 **Coast Scene.**  
 945 **Nativity,** and Bust of an Old Man. 2 pieces.  
 946 **Busts.** Male and Female. 2 pieces.

- 947 **John the Baptist.**
- 948 **Old Painting**, on Panel. Solid carved frame.
- 949 **Madonna and Infant Jesus.**
- 950 **Magdalen.**
- 951 **Magdalen.**
- 952 **Female Bust**, in oval frame.
- 953 **Devotion**, and Companion. 2 pieces.
- 954 **Falling Temple.** Figures prostrate under the Ruin.
- 955 **Lot and his Daughters.**
- 956 **Head of Christ.**
- 957 **Old Head.**
- 958 **Ferdinand III.** of Spain. Fine old Portrait.
- 959 **Nativity.**
- 960 **Cross by the Way-side.** Pilgrim kneeling. Oval.
- 961 **Monk kneeling before a Cross.**
- 962 **Holy Family.**
- 963 **Mary and Jesus.** Busts. 2 pieces.
- 964 **Flower Piece.**
- 965 **Moses**, and Alexander Magnus. 2 pieces.
- 966 **Castle**, and Cattle Piece. 2 pieces.
- 967 **Heads**, etc. 3 pieces.
- 968 **Head of Rubens.**
- 969 **Antique Picture**, on long canvass; Flower Piece, and other good old Pictures. 7 pieces.
- 970 **Head of a Young Man**, and Head of a Cherub; on Panel. 2 pieces.
- 971 **Paintings on Stone.** Curious subjects, very old and fine; considered valuable in Naples, where they were purchased. 2 pieces.
- 972 **Ascension and Entoubment of Christ.** 2 pieces.
- 973 **Byzantine**, on Panel. "The Epiphany," a combination of gold and colors very remarkable, from a Convent in the Tyrol.



- 974 **Madonna** and Infant Jesus, on prepared ground laid in the manner of Fresco preparation on wood; the figures painted on gold back-ground; Byzantine; very rare; also from a Convent.
- 975 **Byzantine**, on Wood. Madonna, Jesus, and other figures.
- 976 **Head** of Christ, painted on canvass and encased in a box, opening from behind; guards of bronze on the corners protect the face of the painting from contact with the glass, and form at the same time curious and interesting ornaments; Mediæval.
- 977 **Byzantine**. Madonna, on wood; much injured.
- 978 **Monk** at his Devotions. In oil, on panel; very good.
- 979 **Religious Subjects** from a Convent, in one lot.

### Ancient Armour.

- 980 **Austrian Sabre** of the XVIIth Century. Broad straight blade, 34 inches long; sheath, handle, and guard of iron.
- 981 **Executioner's Sword** of the XVIIth Century. Broad straight double-edged blade, short groove, terminating 5 inches from hilt, brass mounted scabbard, solid BRONZE guard and handle, terminating in a monstrous head; length 24 inches.
- 982 **Cavalry Sword**, used in the service of Napoleon I. Crooked blade, 28 inches long; brass mounted scabbard, hilt, and handle.
- 983 **Coutelas de Chasse**, on which is engraved "SUIE MARIA TERESIA REGINA HUNGARIE et BOHEMIE;" the blade is 27 inches long; has representations of different animals on the handle and guard, which are of brass.
- 984 **Coutelas de Chasse**, from the Tyrol, of the XVIth Century. Has crooked blade, with deep groove near the back; etched with representations of hunter's accoutrements, long crooked iron guard, horn handle.

- 985 **Couteau de Chasse**, time of Louis XIVth. Straight blade, grooved the entire length (20 inches), back beveled to a cutting edge 3 inches from point, brass mounted, horn handle and brass guard, with spirited representations of hunting scenes and animals.
- 986 **Couteau de Chasse**. Short straight blade of even width to its rounded end, hunting scenes etched on one side; a work of the XVIth Century; length of blade 11 inches; brass handle, without guard.
- 987 **Coutelas de Chasse**, with crooked blade 19 inches long; has horn handle, brass mounted, with guard; XVIIth Century.
- 988 **Epée** of the XVIth Century. Has straight double-edged blade, 34 inches long, with short grooves; solid ivory fluted handle, with brass pommel and dog's head; scallop shell guard.
- 989 **Epée**. Blade quite similar to last. Iron handle and guard; same age.
- 990 **Epée**. Another, of the XVIth Century; 34 inches long; has brass mounted handle, and fine guard, also of brass.
- 991 **Sword**, with double edged blade, 30 inches long. "KLIER" twice repeated, with very rude etching; has strong buck-horn handle and iron guard. Very old.
- 992 **Coutelas de Chasse**. Short double-edged blades without grooves; brass ornaments on the handle, iron guard. Very old.
- 993 **Epée** of the 16th century; very narrow blade, grooved; iron handle and guard. Length 30 inches.
- 994 **Prussian Officer's sword**, time of Frederick the Great; has two-edged blade, without grooves, 31 inches long; brass handle and guard.
- 995 **Epée**, or Poignard, made by ANTONIO PACHIMO, of Toledo; the blade is 30 inches long, without cutting edges, the four sides of even angles; has solid brass handle and guard.
- 996 **Short Sword**, with two edges; the blade straight and grooved; double iron guard, protecting wearer's hand and arm. Very old.

- 997 **Short Sword**, blade similar to last; brass handle and guard; probably 16th century.
- 998 **Epée**, two-edged blade; handle brass, with brass guard; length 24 inches. Old.
- 999 **Foil**, and point of a Lance "de Tournoi;" both of the 16th century. 2 pieces
- 1000 **Antique Weapons** of various kinds. 6 pieces
- 1001 **Musk-ct**, a "Louis Quatorze;" has a finely carved stock, with service strap, as worn by a soldier. The lock (percussion) is not original, and the length of the barrel has been extended. In perfect order.
- 1002 **Horseman's Pistol**. The original lock changed to percussion; has some good old etching, and a very finely executed Head on the lock. Very old.
- 1003 **Old Pocket Pistol**; flint lock, brass mountings.
- 1004 **Old Pocket Pistol**; flint lock, part gone. Silver and pearl inlaid.
- 1005 **Ancient Gun Lock**. Very curious.
- 1006 **Polished Morion** (head piece), with cock's-comb peak; worn in the time of Elizabeth. Steel.
- 1007 **Plain Morion**, straight-peak; time James I.
- 1008 **Plain Morion**, cock's-comb peak. Elizabeth.
- 1009 **Fleur de Lis Morion**, cock's-comb (bright and black). Francis II. of France.
- 1010 **Bright and Black Morion**, steel. Elizabeth.
- 1011 **Helmet, with Holster**; back and ear pieces. XVIth century. "Pepin" cavalry.
- 1012 **Morions**. Plain, straight peak; plain, cock's-comb peak; Fleur de Lis; bright and black steel; and lobster-back, of the XVIth and XVIIth centuries. 5 pieces
- 1013 **Plain Morion**, straight peak. James I.
- 1014 **Plain Morion**, cock's-comb peak. Elizabeth.
- 1015 **Fleur de Lis**, bright and black; steel. XVIth century.
- 1016 **Bright and Black Morion**, steel. Elizabeth.

- 1017 **Lobster-Back Morion.** Helmet and ear pieces. Ancient. Of the "Pepin" Cavalry. XVth century.
- 1018 **Morions.** Straight peak; cock's comb; and lobster-back. XVth century. 3 pieces
- 1019 **Morion; cock's-comb peak.** Elizabeth.
- 1020 **Morion; bright and black; steel.** Elizabeth.
- 1021 **Arm Piece,** time of Henry VIII.
- 1022 **Breast Plate,** with joints; time Henry VIII.
- 1023 **Back Plate,** same era.
- 1024 **Back Plate,** engraved; time of Elizabeth. Has pictures of this queen, and of her father Henry VIII. engraved in cartouches. Also, around a large picture, "HOSTILIO PALMERIO."
- 1025 **Demi-Suit;** time Henry VIII. Breast-plate, back-plate, Gorget, and Morion; bright and black steel. 4 pieces.
- 1026 **Shield.** Measures two feet in diameter on the outside; made of wood, covered with thick cloth, painted or enameled on both sides; bears a spirited drawing in gold, representing a conflict of cavalry. May be referred to the time of Elizabeth, or perhaps earlier, when tournaments and other pageants were common. Rare.
- 1027 **Shield.** Another for use in pageants. Similar to the above.
- 1028 **Shield.** Another; wants the covering on the hollow side. Similar to the above.
- 1029 **Spurs.** Of the time of James I. 2 pieces
- 1030 **Spurs.** Equally ancient. 2 pieces
- 1031 **Spurs.** Extra thickness, remarkable construction. Very ancient. XVth Century.
- 1032 **Spurs.** Ancient. Partly XVth and partly XVth Century.
- 1033 **Elegant Little Silver Spur.** XVth Century.
- 1034 **Ancient powder flask.**
- 1035 **Horns of the Ibex.** Mounted. 2 pairs.
- 1036 **Cap** worn by a Greek Child of the better class. Very rich, with paste gems and gold tinsel. Ancient.



