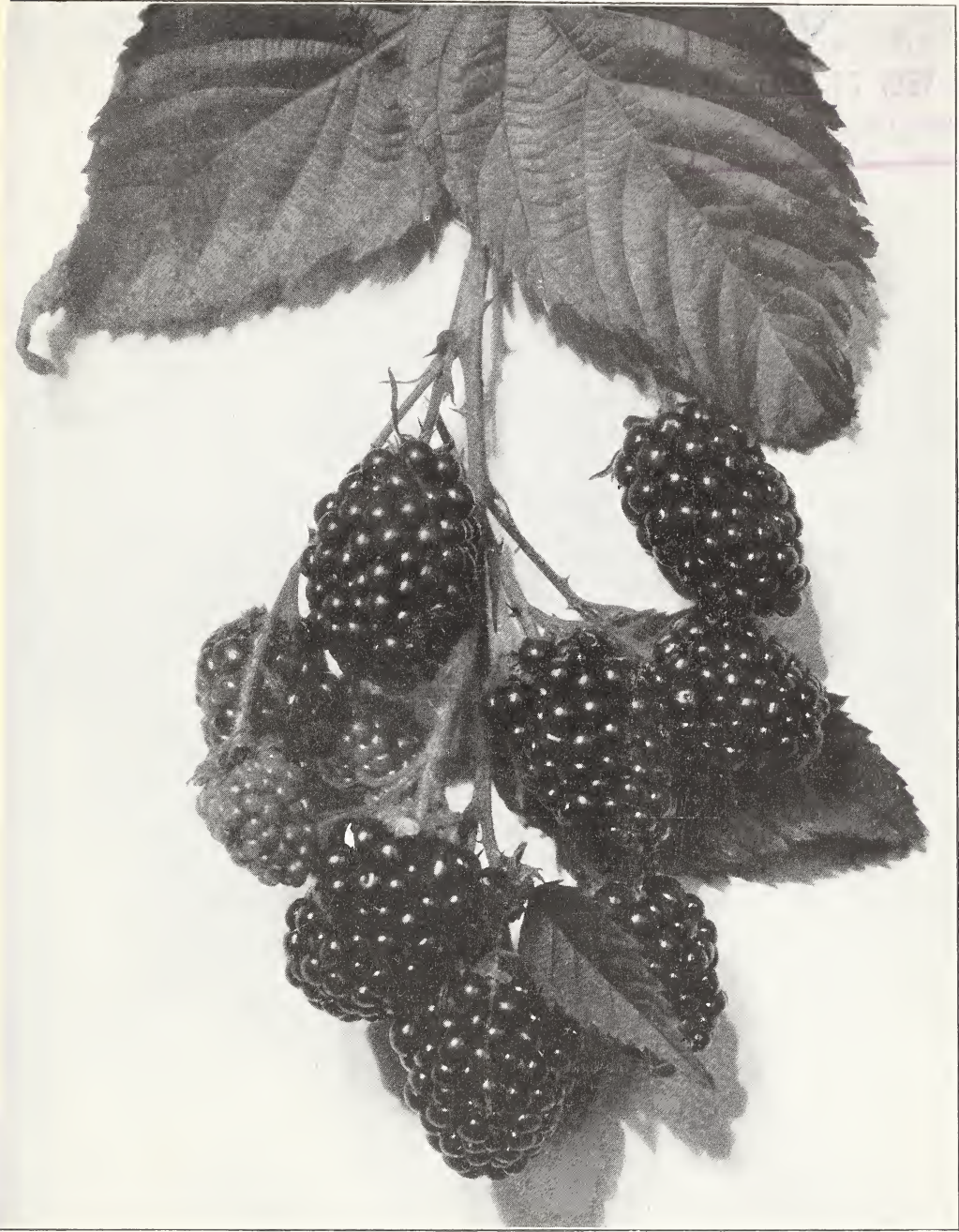


Historic, Archive Document

Do not assume content reflects current scientific knowledge, policies, or practices.

6241



THE ALFRED BLACKBERRY (Second crop) Photographed September 17, 1925.

South Michigan Nursery

GEORGE STROMER

New Buffalo, (BERRIEN
COUNTY) Michigan

Growers of High Grade Nursery Stock—100 ACRES
SPRING 1927

South Michigan Nursery Stock is Guaranteed to be True to Name and Satisfy

When you place your order with the South Michigan Nursery you are sure of getting exactly what you order; also that your plants will reach you in good growing condition. We guarantee that all our plants are true to name and free from dangerous diseases. We will replace all plants that arrive in poor condition, providing that claim reaches us within five days after arrival.

OUR GUARANTY

We guarantee every plant sold by us to be first class in every respect; free from any injurious disease or insect, and true to name, and hold ourselves ready, upon proper proof to refund or replace any that proves otherwise, providing complaint is received not later than September 1st of second year stock was originally purchased. It is mutually agreed between ourselves and the customers that we shall not be liable for a greater sum than the amount paid us for the plants.

WE DO NOT SUBSTITUTE

For the last twenty-three years we have been growing strawberry, blackberry, raspberry, and other small fruit plants, both for fruit and plants. All our plants made an excellent growth last summer, so we are able to offer the public the finest lot of plants we have ever grown.

We are located in the GREAT FRUIT BELT in Berrien County, Michigan, one and one-half miles from Lake Michigan, and three miles from the Indiana state line. M. C. R. R. & P. M. R. R. Railway service.

REFERENCE. New Buffalo State Bank, New Buffalo, Michigan; Brad Street; American Railway Express Agent, and Postmaster. Our State License Number is 2210.

REMITTANCE. Our terms are cash with order. Or, we will book early orders, if one-third of amount is sent with orders, and balance payable April 1st or before plants are shipped. You may remit by Draft, Post Office Money Order, Express Money Order, Registered Letter, or your personal check. Stamps may be sent for small orders. Never send coin by mail.

HOW TO ORDER. Always use the order sheet. Write plainly the amount of each variety wanted, name of each variety and price. (Write your name and address plainly.)

MENTION HOW YOU WANT GOODS SENT. Express or Parcel Post. We do not advise shipping live plants by freight.

PARCEL POST SHIPMENTS WILL BE MADE C. O. D. FOR POSTAGE. That is, you may order your plants to be shipped by parcel post, and pay your postman the postage upon arrival of plants. In that way your plants are automatically insured, **SO, DO NOT SEND MONEY, EXTRA FOR POSTAGE.**

OUR PRICES are F. O. B. New Buffalo, Michigan, unless otherwise specified.

SHIPPING SEASON begins about March 25 and continues to about May 15, depending upon the weather conditions. We use our own judgment. Always mention the date you want your plants shipped, and we will get them out for you as near as possible to that date. Prompt shipment is our motto.

C. O. D. SHIPMENTS. As a rule we do not make C. O. D. shipments.

TEN PER CENT DISCOUNT ON ALL ORDERS BEFORE MARCH 10th on amounts over \$5.00. This applies to catalog rates. If you receive this catalog after March 19th you are entitled to the 10% discount.

Distance for planting, and plants required per acre—See page (10).

FREE PLANT OFFER—BACK COVER

MICHIGAN STATE DEPARTMENT OF AGRICULTURE No. 141

L. Whitney Watkins, Commissioner

CERTIFICATE OF NURSERY INSPECTION

This is to Certify, that the nursery stock of **GEORGE STROMER, New Buffalo, Michigan** has been examined and found apparently free from dangerous insects and dangerously contagious tree and plant diseases.

This certificate to be void after July 31, 1927.

Bureau of Agricultural Industry,

A. C. CARTON, Director,
Lansing, Michigan, September 28, 1926.

E. C. MANDENBERG,

In charge of Orchard and Nursery Inspection.

Canton, Wisconsin, Oct. 23, 1926.

Dear Mr. Stromer: I wish to inform you that I received those strawberry plants yesterday, being 5 days on the road. I certainly wish to thank you. You are clear white and a yard wide. Say, you like me, will never get rich being too honest and I am a bachelor 64 years young, and never got started yet, always wallowing in the rut, but I sure would be pleased to make your personal acquaintance, but being of German stock I don't get there at all. Farmers are hard put this year on account of excessive rains. We found four inches of snow this morning but the ground is not frozen. I heeled in those plants till spring, fearing too early frost. Ground being wet I put sand in bottom of trench and covered up with boards, leaving some space for air. Now I hope they don't die this winter. Mr. Stromer, if you wish to use this letter for testimonial, I sure shake your hand.

Yours truly and thank you again,

JOHN R. IMMERFALL,

Canton, Wisconsin, Box 163.

P. S. I will try to put some trade your way next spring.

NOTE—Last fall 1925, Mr. Immerfall ordered 100 Champion Everbearing Strawberry plants and they winter killed for him, so we replaced them thisfall.

Alfred-

The New Coreless Blackberry

For many years, every Berry Grower, every Nurseryman — in fact everyone at all interested in growing, selling or eating berries, have been patiently waiting, and hoping for a good dependable Blackberry.

Since the passing of the old reliable variety Wilson, many varieties have come and gone. While some of them have given satisfaction in certain localities, not a single one has become a universal favorite. The perfect blackberry must combine quality, size, flavor, appearance, and productiveness, with hardiness and adaptability to a wide range of soils and climates. Growers everywhere have long wanted a Blackberry possessing those qualities.

Here it is at last The ALFRED

Lack of space forbids describing in detail the many good points of this variety; however, I wish to call your attention to the outstanding reasons why the ALFRED is superior to all other varieties.

BEARS SECOND SEASON: ALFRED is such a healthy, vigorous grower that it produces a good crop of berries the year following planting. It is not unusual to pick 10 to 40 berries from the bush the same year planted.

IMMENSE SIZE: The berries are twice as large as Eldorado, Blower, etc. Many of them 1½ inches long, and the finest flavored of all blackberries. It is one ideal table berry because it is practically CORELESS, sweet and delicious. It is very small seeded.



Actual Photograph of the Wonderful ALFRED Blackberry. (Note the enormous size of these berries on one cluster.)

EXTREMELY HARDY: ALFRED can be grown anywhere without winter protection, having withstood 30 degrees below zero, and not a single tip of a branch injured, while other varieties were frozen to the ground.

EARLY SEASON. This is one big feature of this variety. It ripens a week to ten days earlier than Eldorado and in productiveness it is in a class by itself. We have seen them bear a second crop. We picked many cases this year in September. As I watch the ALFRED year after year I am more and more thoroughly convinced that the ALFRED BLACKBERRY WILL HAVE A PROMINENT PLACE IN THE VALUABLE FRUITS HALL OF FAME.

BLACKBERRY plants are different to propagate, and it will be years before there will be a supply of ALFRED plants.

Our plants are much larger this year than last, owing to the fine growing weather that we have had this Fall.

ROOT CUTTING PLANTS, with fibrous roots. Plants will be properly pruned and ready for you to set. This saves transportation charges.

Per 25, \$2.00; 100 for \$4.75; 500 for \$20.00; 1000 for \$39.00

Bearing Age Plants (2-yr. old) for quick results. 25 for \$5.00; 100 for \$15, (10% discount if ordered before March 10, 1927.)

Alfred Blackberries

(CONTINUED)

To the right you see an actual photograph of two specimen ALFREDS. These two berries were found growing on a cluster with two other berries. Not being so full they grew to be better than 1½ inches long. This is actual size. (We want you to understand that every berry on the bushes will not get to be 1½ inches long,) but a good many will, if you will follow the following instructions. **How to grow 1½ inch Alfred Blackberries.**

FIRST. Be sure to get the GENUINE ALFRED PLANTS.

SECOND. Upon arrival of the plants from us, set as soon as possible. If impossible to plant at once, heel them in the ground till you are ready.

THIRD. Be sure that the soil where you are going to plant them, is in good condition. **DO NOT PLANT THEM IN WET SOIL.** Well drained soil is the best. Plenty of well rotted manure plowed under, will bring about the best results.

FOURTH. Keep them cultivated all summer. Do not let the weeds get in them. This will hinder them from getting their size, and reduce their fruiting capacity.

FIFTH. In the fall place a little manure around them, if handy. (This is not necessary.) A little fertilizer in the spring will do just as well.

SIXTH. Early in the spring prune the branches back to about 8 or 9 inches and the main stem according to how much growth it made. Do not let it hang over on the ground.

SEVENTH. Keep them well cultivated again the second summer, and if the summer is not severely dry you will get berries 1½ inches long, as I get them every year. **PRUNE OUT THE OLD FRUITING CANES AS SOON AS BERRIES ARE HARVESTED.**

WE HAVE COUNTED OVER 2,000 BERRIES ON AN ALFRED BLACKBERRY BUSH THE SECOND YEAR PLANTED.



TWO SPECIMEN ALFREDS

How, and Where I Found the Alfred Blackberry

By GEORGE STROMER

Eight years ago last August, while I was walking along an old abandoned right-of-way, I noticed an unusually large Blackberry bush growing near a former station called ALFRED. (This station was merely a junction.) The ripe berries with which it was loaded were extraordinarily large.

The following spring I called my discovery to mind, and thinking it might prove worth while, I dug it up from its native soil, and cut the roots so as to make three plants. These were planted in a rich soil where they grew vigorously all summer.

That following winter of 1918 was very severe in Michigan, the native state of the plant, but they withstood the heavy frosts, and 14 degrees below zero. Many young plants sprung up from the roots, the next spring I transplanted these, and cultivated them carefully. Year after year of diligent care I have propagated these plants to such an extent that the fruit is now being supplied to the local markets, at a fancy price, and is always in good demand. The average price received per 16 quart case was three dollars. I kept a record of one-half acre of these (one year old canes) and they made a return of \$198.00. The one year old canes that bore this crop were only from 18 to 24 inches tall, while the fruiting canes for next year are from 3 to 4 feet tall with wide spreading branches. Many canes are one inch in diameter, thus promising a much better return for next year.

Last year from this record crop I measured a good many berries that were over one and one-half inches long, and three inches around. Several Nurserymen that have seen this half acre patch in fruiting season, claim that the ALFRED is the largest berry they have ever seen.

On our cover page you will see a cluster of ALFREDS, that was photographed on September 17, 1925. The Alfred Blackberry bore their second crop this year, and the berries were of enormous size. Photograph shows actual size.



Showing an ALFRED root cutting plant. A foot rule along side.

THE ALFRED BEARS WELL IN EVERY STATE IN THE UNION.

Collection Offer on Back Cover.

About Planting

DISTANCE OF PLANTING: For garden culture we advise planting the ALFRED about four feet each way, but for field culture we plant the rows 8 feet apart, and the plants 4 feet apart in the rows. This will give you plenty of room to cultivate them both ways the first year, and the second year, you cultivate them by going through the rows with an ordinary spring tooth harrow. The ALFRED is such a vigorous grower that you will not be able to cultivate them crosswise the second year, providing the ground is in fairly good condition when you plant them.

George Stromer, New Buffalo, Michigan.

Union Dale, Penn., April 28, 1925.

Dear Sir: The Alfred Blackberry and Eaton Strawberry plants arrived. Many thanks for the extras. Yours very truly, A. J. BAKER.

George Stromer, New Buffalo, Michigan.

Buckfield, Maine, Oct. 3, 1925.

Dear Sir: This Spring I sent for one Alfred Blackberry plant. Hope you received my note thanking you for the two extra ones you sent. In spite of a season so dry that only half a crop of anything could be grown, two of the three made a fine growth.

Yours very truly,
INEZ A. SPAULDING.

Mr. George Stromer, New Buffalo, Michigan.

Madison, Indiana October 25, 1926.

Dear Sir: Will you please send me 300 Alfred Blackberry plants for which you will find enclosed check for \$14.75. Please ship by express. I tried out half dozen last season, and they sure did well in this locality.

Yours truly,
ALFRED D. CHANDLER.

South Michigan Nursery, Buffalo, Michigan.

Mountain Grove, Mo., Nov. 6, 1926.

Dear Sirs: Find enclosed check for \$4.75 for which please ship me 100 Alfred Blackberry plants. This is the second order, as I am so well pleased with the 100 you sent me a few days ago.

Yours very truly,
R. H. LANDIS.

Features of the Alfred

The two big and profitable features of the ALFRED are: **FIRST**—they are from a week to ten days earlier than the ELDORADO, thus you get your berries on the market with the Dewberries, and get the big price.

SECOND: On account of their large size you can demand as much money for them as you can for dewberries, because they are as large, and have a much better appearance, being a very glossy jet black. Most other blackberries and dewberries will turn a copper color, after being picked 24 hours, but this is not so with the ALFRED. They hold up longer than any other variety. If the ALFRED is left to set on the bushes for a day or so after they are ripe, they will be **CORELESS**. They have been known to set on the bushes for over a week after they were ripe, and not spoil.

Mr. George Stromer, New Buffalo, Michigan.

Orting, Washington, Oct. 25, 1924.

Dear Sir: The Alfred plants arrived in fine shape, and made a fine growth.

Yours very truly,
MRS. RUTH WADKINS.

ALFRED BEARS IN CALIFORNIA THE FIRST SEASON THAT IT IS PLANTED

South Michigan Nursery, New Buffalo, Michigan.

Riverside, California, September 22, 1924.

Dear Sirs: Last season I purchased from you a dozen Alfred Blackberry plants and they are doing fine. One bush I picked ten large, ripe berries from last Sunday. They are everything that you claim them to be.

Respectfully, E. A. KING.

Remember

The Alfred is a bush variety—not a vine like a Dewberry. You save the expense of posts and wire.

FREE PLANT OFFER ON BACK COVER

25 for \$2.00; 100 for \$4.75; 500 for \$20.00; 1000 for \$39.00, 2-year bearing age plants; for quick results. 25 for \$5.00; 100 for \$15.00.

1779 plants will plant an acre. This acre patch (1-year plants) for \$65.00.



A Case of CHAMPIONS Picked November 18. (Note the leaves have already fallen from the trees.)



Champion Patch September First



A Champion Everbearing Plant Loaded with Berries. One-third Actual Size.



A Champion Plant

The Champion Everbearing Strawberry

Champion, without doubt, is the best everbearing strawberry grown. It is the most prolific of all. When you plant CHAMPION you are certain of success because three months after planting every plant will commence bearing, and continue all through the summer and late in the fall. The runners will commence to bear even before they have taken root.

We grow several acres every year for fruit, and we know what we are talking about. Make sure that you get the GENUINE CHAMPION. Order from us. We obtained our stock direct from the originator. You do not have to cultivate and care for them a whole year for nothing. You begin to harvest the crop three months after you get the plants from us. For instance if you set them out the middle of April they will begin to bear by the middle of July.

HOW TO GROW CHAMPION EVERBEARING STRAWBERRIES SUCCESSFULLY—

FIRST. Get your plants from a nursery who will guarantee them to be GENUINE CHAMPION. (We do that.) We also guarantee that every plant will bear in three months or we will refund the full purchase price of the plants.

SECOND. Select a piece of well drained soil, that has been well fertilized (stable manure is the best,) with a little acid phosphate 16% applied on top before planting. Five hundred pounds to the acre is about right.

THIRD. Only one year old plants should be planted. These can be secured from reliable nurserymen. Our plants are all dug from one year old patches. Plant as early in the spring as possible. If the plants arrive before you are ready for planting, the plants should be "Heeled-in" by opening the bunches and placing them in trenches and packing the soil firmly around them. Do not bury them.

FOURTH. The plants should be set 2 feet apart in rows, and the rows $3\frac{1}{2}$ to 4 feet apart.

FIFTH. Cultivation should begin as soon as possible after the plants are set by using a cultivator which does not cut deeply into the soil. Cultivate every ten days, with an occasional hoeing close up to the plants, to keep down the weeds. This also helps to keep the surface soil loose and prevents drying out.

SIXTH. Keep all blossoms removed as they appear until about the last of June. Then leave all blossoms set. By this time the plant has had a chance to get firmly set in the soil, and has made a good growth. By all means do not leave the first blossoms set.

CHAMPION EVERBEARING Strawberry plants are very scarce this year. Some patches did not make as many plants as there were set in it.

25 plants, 75c; 100 plants, \$2.00; 500 for \$6.00; 1000 for \$10.50; 5000 for \$48.00. FREE PLANT OFFER—BACK COVER.



Looking down upon a quart box of Premiers. This box is 5 inches square. Only 26 berries in the box and it's heaping full. An actual photograph.

PREMIER means FIRST.

Premier

We picked 96, 16 quart cases from a patch of Premiers, 20 square rods in June, 1925, and the frost killed one-third of them in blossom.

The very best of all berries for early fancy trade. For big, early money, **PLANT PREMIER**. If you plant **PREMIER** you will get the first berries on the market. They will be bearing heavily before other varieties begin. Your biggest picking will be when berries are in good demand and are bringing top prices. Premiers will grow anywhere. The plants are sturdy, and long rooted, a good drought resister. The berries are very large, and hold their size to the last picking. Premier is the only early variety that will do this. The flavor cannot be beaten in any variety. Premier is one of the best shippers that grows, on account of its firmness. **BE SURE TO INCLUDE SOME WITH YOUR ORDER.** Our prices are very reasonable for such a wonderful variety.

PRICES: 25 for 40c; 100 for \$1.20; 300 for \$2.60; 400 for \$3.25; 1,000 for \$7.00; 500 at 1000 rate. 10% Discount before March 10th.

A Real Wonder

It is the largest everbearing berry grown. Mastodon is the most prolific, the firmest, the most beautiful berry with the real strawberry flavor. It is a berry that bears early and late, one that can be picked all Spring and Summer. Many of the berries grow as large as a silver dollar, and are just as perfect. Mastodon is the real marvel in Strawberries; nothing like it has ever been known. Plants that were set in May this year, have produced as high as three quarts per plant. A field of this Mastodon in bearing is a sight never to be forgotten.

Order your Mastodon from Stromer and you will be sure to get the genuine strain. We obtained our plants direct. We Guarantee Satisfaction.

Philadelphia, Penn.,
Oct. 7, 1925.

Mr. George Stromer,
New Buffalo, Michigan.
Dear Sir: Received the 50 strawberry plants O. K. October 5th and thank you very much indeed for such nice, large plants. I did not really expect such nice big plants as the ones you sent

Yours very truly,
Mr. Willis Johnson,
3926 Fairmont Ave.

AGENTS WANTED!
Write for proposition.

We will make special prices on club orders.
WRITE!

500 MASTODON FREE TO THE PERSONS SENDING IN A \$50.00 CASH ORDER FOR ANYTHING SELECTED FROM THIS CATALOG BEFORE APRIL 1, 1927.

Mastodon

The New Giant Everbearing

Most Successful Commercial Berry on the Market



A 16 QUART CASE OF MASTODON, PHOTOGRAPHED SEPT. 5, 1925, SOLD FOR \$6.60 PER CASE IN CHICAGO.

Words cannot justly describe this wonderful new Everbearing Strawberry. It will commence bearing three months after being set and continue till killing frosts late in the Fall. You must see it growing yourself. It will be a surprise of your life. Our MASTODONS were set April 10th, and our first picking was July 14th. Just a few days over three months. Our last picking was on November 6th, 1926. Berries were still fine.

The above photograph plainly shows you the size of the berries. The quart boxes are 5 inches square.

We will furnish affidavit to the effect, that the above photograph is of the genuine MASTODON variety, and that it was photographed on the date named.

Compare our prices with other reliable concerns.
25 plants \$1.50; 50 for \$2.75; 100 for \$3.50; 500 for \$15.00; 1000 for \$27.00. Less 10% before March 10.
DON'T OVERLOOK FREE PLANT OFFER ON BACK COVER. 500 Plants FREE, note top of this page.

Its Origin

Mastodon was originated several years ago by one George Voer of Northern Indiana, who claims it is a cross between Superb and Kellogg's Prize. Out of many seedlings produced from this cross, only one plant was worth saving, this one being the original Mastodon, from which all others of its name have sprung, and from which source our original planting stock was secured.

You Can Make
\$500 to \$1500

Profit per Acre
From

**Genuine
Mastodon
Everbearing
Strawberry
Plants**

within six months from
the time you
set them.

7-acre fruit farm for sale.
5 acres set to apples, peach,
pear, sweet cherry and grape,
3-year old, balance pasture,
lot and garden spot.

We are listing only "Perfect Flowering" varieties of strawberry, i. e., they can be planted by themselves, and need no other variety to fertilize their blossoms.

Our Mastodon made a fine lot of plants last season, and that is why our prices are much lower than most nurseries, having large overhead expenses.



COOPER

The Giant of all Spring or June bearing varieties.



A Cooper Plant

Actual Photograph. This Quart Box is 5 inches Square.

DISTANCE FOR PLANTING AND PLANTS REQUIRED PER ACRE

	Distance	Apart	No. Plants
Strawberries (Commercial)	3 ft. 8 in.	x 1½ ft.	7,920
Strawberries, (Garden)	2½ ft.	x 1½ ft.	11,600
Everbearing Strawberries	2½ ft.	x 1½ ft.	11,600
Black Raspberries	7 ft.	x 3½ ft.	1,777
Red Raspberries	6 ft.	x 3 ft.	2,420
Blackberries	7 ft.	x 3½ ft.	1,777
Dewberries	6 ft.	x 3 ft.	2,400
Currants and Gooseberries	5 ft.	x 4 ft.	2,200
Grapes	8 ft.	x 10 ft.	540
Grapes	8 ft.	x 12 ft.	440

The COOPER is probably the most popular strawberry ever introduced. It was introduced a few years ago at Stevensville, Michigan. We obtained our supply from there four years ago. It is a mid-season variety. Ripens with the GIBSON and EATON.

A GREAT PRODUCER: Cooper plants are often a foot tall, and each plant has several fruit stems, loaded with those extra large berries. COOPER will produce more berries than any other variety, and they hold

their size wonderfully, right up to the last picking. COOPER is so well known by this time that it does not require a lengthy description. Lack of space prevents us from writing several pages on COOPERS good points. We have a fine bunch of plants to offer this spring. A fine berry for home market.

25 plants, 50c; 50 for 80c; 100 for \$1.25; 300 for \$3.00; 500 for \$4.00; 1000 for \$7.75; 2000 for \$14.00.

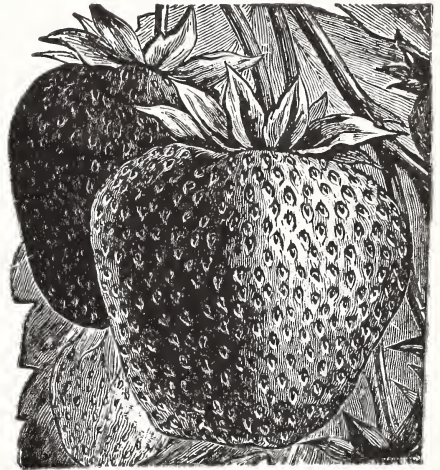
We have tested Bliss, Beacon, Bouquet and Prince, and find they live up to their introducers description.

Bliss

The World's Supreme Quality Strawberry

"NATURE AT HER BEST"

Bliss is a new variety originated by the New York State Experimental Station at Geneva. If this Station has performed no other service than originating the Bliss, its existence would be justified. Apicius wished that he had a neck the length of a stork that he might enjoy the taste of his fruit longer. That is the way you will feel when you first taste the Bliss. The berries are early, very large, dark, glossy red and red to the center, juicy, but firm, sub-acid and delicious. Certainly nature performed a miracle with the soil, sunlight and rain in producing the Bliss strawberry. The Bliss marks the utmost advance in the development of the better-strawberry.



Bouquet

Prices for Bliss, Beacon, Prince and Bouquet: 25 plants for \$1.00; 100 for \$2.75; 500 for \$8.00, limit.

Beacon

The Longest Season Strawberry Known

"THE SHORTCAKE STRAWBERRY"

The Beacon is another new variety originated by the New York State Experimental Station, particularly valuable for its long bearing season. It bears large quantities of the choicest strawberries for six weeks. No other early Strawberry approaches the Beacon for size, color, quality and productiveness. The berries are dark, glossy red, juicy, firm, extremely highly flavored and very productive.

Gibson

The Universal Favorite

This well known variety needs no lengthy description. Year in and year out GIBSON will produce its usual loads of large, dark red berries. The seeds on the GIBSON are light yellow, and green shuck make a beautiful color combination. Gibson is a very vigorous plant. It is the longest rooted variety grown. No other variety will bear as heavy as Gibson. They will send out two and three sets of fruit stems. Include Gibson in your order this spring.

Prices: Per 25, 25c; per 50, 45c; per 75, 65c; per 100, 85c; per 200, \$1.35; per 300, \$1.70; per 400, \$2.20; per 1000, \$5.00.

Prince

This berry was introduced in the East two years ago. They named it PRINCE. Had I introduced it, I would have named it BLACK KNIGHT, for it is the darkest red strawberry grown. It will be nearly black when real ripe. It is one of the heaviest bearers we have ever seen. The berries are medium size, round, and rather tart. For preserving, it will be hard to beat.

Bouquet

Immense Producer of Enormous Berries

"AS LARGE AS A PEACH"

The Bouquet is another new variety originated at the Experimental Station and is destined to become the great Strawberry of America. It makes a very large plant, produces enormous crops of the largest berries we have ever seen. It is very rich in color, dark red, glossy. The flavor is rich, colored to the center, juicy, firm and delicious, with a wild tang all its own.

FREE PLANT OFFER—Back Cover

Less 10%
If Ordered
Before
March 10th



Pearl

The Latest June Bearing Strawberry Produced

It blooms freely and opens its blossom buds sufficiently late in the Spring generally to avoid late frosts. That's why its crops are so heavy and can be counted on so surely. Berries are enormous, of dark, rich red color, dotted with prominent yellow seeds. Its remarkably firm flesh makes it a fine shipper to distant markets and the berries remain in good condition many days longer than other varieties.

Ordinarily, in the North, it does not come into its prime until the very last of June and early July, when other varieties are off the market. It has the field to itself—and growers of all classes reap the benefit.

Pearl.
One-third
Actual Size

Prices of PEARL Plants

25, 50c
100, \$1.00
1000, \$7.00
5000, \$34.00

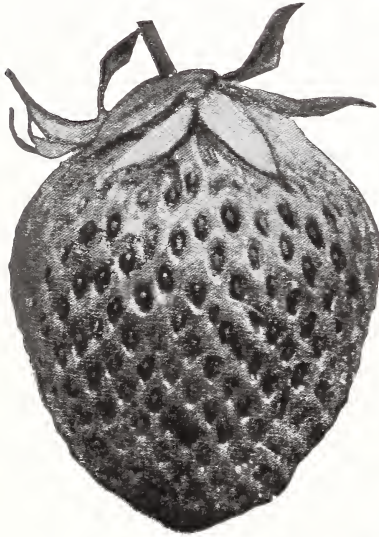
Eaton

Here is the perfect Strawberry. Nothing could be added to improve its wonderfully rich flavor and fine appearance, in the box or on the table.

As a steady, year after year producer of heavy crops, it far surpasses many of the older varieties. Because of its remarkable firmness, it is the best long distance shipper, arriving in the market in excellent condition after being in transit 200 miles or more. Many canning factories specialize in the EATON because of its solid color and firm texture. It does not discolor or soften no matter how long it remains in the can. Don't overlook the importance of planting EATON. You can absolutely depend upon it for satisfactory results, whether for commercial purposes or home gardens.

Less 10% if ordered before March 10th

25 plants for 40c; 100 plants for 95c; 1000
plants for \$6.00; 5000 plants for \$25.00.



King Red

RASPBERRY

The berries of KING RED are large, firm, round and of a bright red color with a most excellent flavor, which insures for them a steady demand.

They are easy pickers. Ripen about a week or ten days ahead of other varieties and for this reason it is highly profitable as it is a good shipper and can be marketed when prices are at highest point.

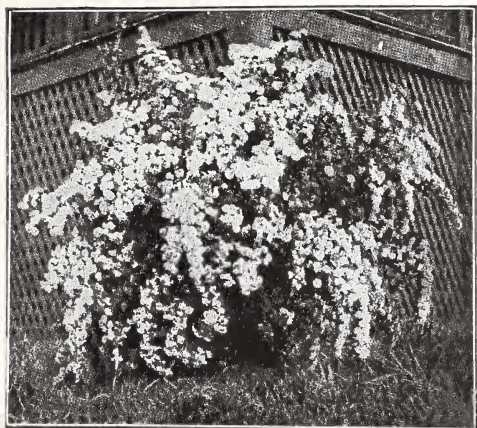
All Michigan Raspberry plants have been twice inspected, last summer.

25 plants for \$1.00; 100 for \$3.00; 1000
for \$20.00, less 10% before March 10th.



King Red Raspberry

Excellent
in Quality
and Flavor



Spirea Van Houttei

This is the grandest of all Spireas, and one of the best and most popular shrubs. The branches are very graceful and drooping when in full bloom, making a complete fountain of white blossoms in May and June. The foliage and bushy shape are ornamental all the year. Very strong plants, 24 to 30 inches, 3-years-old.

Each, 35c; 4 for \$1.00

Purple Lilac

This old-fashioned shrub is too well known to require any description. Adds materially to the attractiveness of the home grounds wherever planted. Excellent for hedging purposes, also individual specimens. The bush is literally filled with large clusters of very fragrant, purple flowers. Blooms in early Spring.

Everybody knows and likes a Lilac—especially a purple one. There is always a place for at least two or three bushes around your yard, and you will count it a real pleasure to have these beautiful shrubs blooming as they do, with the earliest in the Spring. Plants 3 to 4 feet tall. Well branched and rooted.

Each, 50c; 6 for \$2.00.

Rainbow Gladiolus Mixed

There are at least 20 varieties in this mixture. All colors, and some very choice ones. Bulbs run from 1 inch to 2 inches in diameter and every one guaranteed to bloom.

12 for 50c; 30 for \$1.00; 100 for \$2.90.



Bittersweet

A very beautiful vining shrub, 15 or 20 stems will twine around each other, and will completely cover a fence or trellis. In the fall the year old wood will be covered with orange colored berries. If picked and hung in house they will burst open and form a beautiful flower.

2-year-old plants. Each, 25c; 10 for \$2.00. Heavy Roots

Cumberland Black Raspberry

The "Business Blackcap"

This is without question the most profitable and popular Black Raspberry ever grown. It is the one safe and reliable commercial variety because you can depend on a big crop regularly. We call it the "Business Blackcap" because it succeeds on all soils and produces its big crop year after year.

We have never known Cumberland to fail, and the best proof that it is a profitable variety is the fact that the demand for plants is greater every year and more Cumberlands are planted than all other varieties combined.

Cumberland is perfectly hardy and tremendously productive. The berries are extra large, glossy black, and not equaled by any other variety in quality, flavor or appearance. Whether wanted for market or home use, we can recommend Cumberland to our most exacting customers. Disease free. Twice inspected plants.

Prices: 12 for 75c; 25 for \$1.40; 100 for \$3.00; 1000 for \$18.00; 5000 for \$75.00

Fruit Trees

Apple

Parcel Post Size
Each 35c; 10 for \$3.00.

Apples

Each, 85c; 10, \$7.00; 100, \$55.00

Delicious (Winter); Jonathan (Winter); Wealthy (Fall); Yellow Transparent (Summer); Duchess (Summer); Snow (Winter); R. I. Greening, (Winter)



Delicious Apple

Peaches

Each 50c; 10, \$4.90; 100, \$35.00

Elberta, J. H. Hale, Gold Drop, Rochester.



Elberta Peach



Bartlett Pears

Pears

Each \$1.00; 10, \$8.50; 100, \$75.00
Bartlett, Kieffer (Winter).

Plums

Each \$1.00; 10, \$8.50; 100, \$75.00
German Prune, Monarch. Extra large trees.



German Prune

Cherries—Sweet

Each 85c; 10, \$7.50; 100, \$70.00

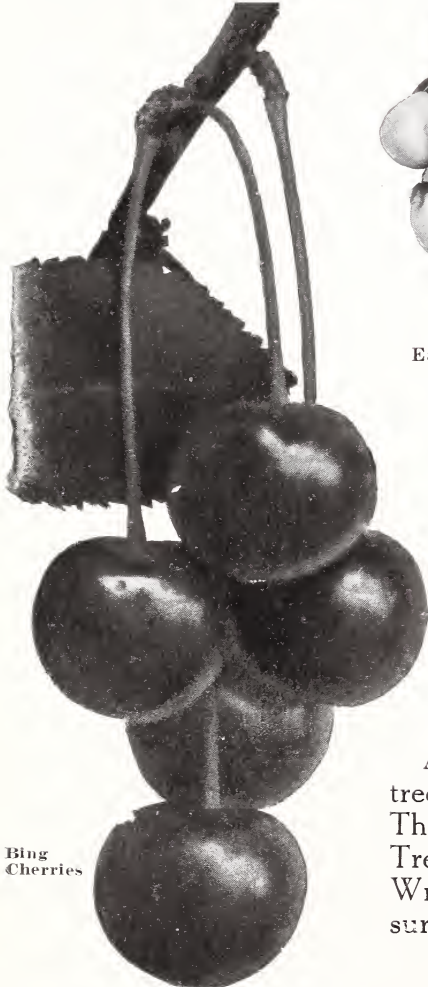
Bing (Black); Gov. Wood. (Yellow); Black Tartarian.

Cherries—Sour

Each 75c; 10, \$6.50; 100, \$60.00.

Large Montmorency, Early Richmond.

All the above listed trees are No. 1, nice large trees, that are too large to go by parcel post. They will have to be sent to you by express. Trees like these cannot be sold for less money. Write for prices on lots over 100 trees, we will surprise you.

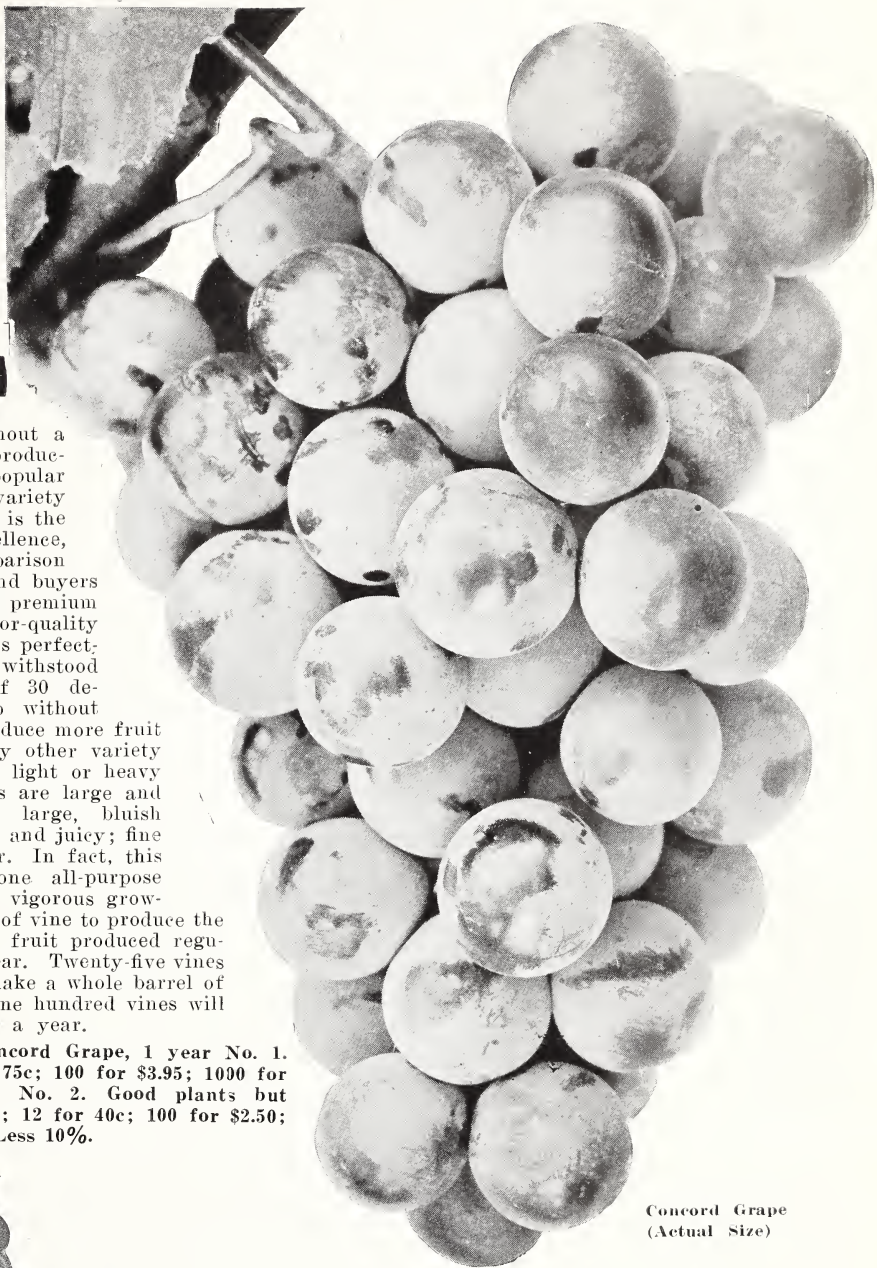


Bing Cherries

Grapes

The
Popular
Wine
and
Table
Grape

Concord



Concord Grape
(Actual Size)

Concord is without a doubt the most productive, the most popular and profitable variety yet introduced. It is the standard of excellence, quality and comparison on all markets, and buyers everywhere pay a premium for this superior-quality Grape. Concord is perfectly hardy, having withstood a temperature of 30 degrees below zero without injury, it will produce more fruit per acre than any other variety and does well on light or heavy soil. The bunches are large and compact; berries large, bluish black color; sweet and juicy; fine quality and flavor. In fact, this variety is the one all-purpose Grape. A strong, vigorous grower, making plenty of vine to produce the enormous crop of fruit produced regularly year after year. Twenty-five vines of Concord will make a whole barrel of grape juice and one hundred vines will make you \$100.00 a year.

PRICES on Concord Grape, 1 year No. 1. Each, 10c; 12 for 75c; 100 for \$3.95; 1000 for \$35.00. **One year No. 2.** Good plants but smaller. Each, 5c; 12 for 40c; 100 for \$2.50; 1000 for \$23.00. Less 10%.



Salem Grape

Salem

(Red). A splendid Grape with clusters often weighing one pound or more. Greatly resembles the California Grape. Clusters firm and compact; a most splendid table Grape. Vines are very healthy and hardy, the fruit ripening about one week ahead of the Concord. Your garden deserves at least a few of these vines for home use. 540 vines will set an acre 8x10 feet.

Strong one-year-old plants (Fancy). Each 30c; 6 for \$1.50; 12 for \$2.50; 25 for \$4.00; 50 for \$8.00.



Senator Dunlap

PER.

Perhaps no other Strawberry is so well and favorably known throughout the country generally as the old reliable Senator DUNLAP. It enjoys the enviable distinction of producing full crops in a wider range of soil and climate than any other variety. No wonder, then, that growers in nearly every state in the Union order more and more Senator DUNLAP every year.

A VERY HEAVY BEARER

That's what the practical grower wants—BIG CROPS! Senator DUNLAP produces them unflinchingly. Big, uniformly shaped berries of handsome, dark red color. A splendid shipper and ready seller because of its attractive appearance. What the commercial grower wants, so does the home grower.

Taking all into consideration, here's a berry that will bring you results—a big profit on your investment—for pleasure or profit—take our word for it!

Raised Successfully Everywhere

25 for 25c; 100 for 80c; 300 for \$2.00;
500 for \$2.50; 1000 for \$3.75.
NO DISCOUNT.

Free Plant Offer

If your entire order amounts to \$5.00 or over you may select 50c worth of stock FREE.

If your entire order amounts to \$10.00 or over, you may select \$1.00 worth of stock FREE. For every dollar over \$10.00 you may select 10c worth FREE.

If your order is received before March 10th you may deduct 10% more, but your orders must amount to the above amounts, after the discount is deducted.

\$10.00 Collection Offer \$10.00

100 Alfred Blackberry. List price.....	\$ 4.75
200 Mastodon. List price.....	7.00
100 Cooper or Premier. List price.....	1.25

6 GLADIOLUS BULBS FREE. Total.....\$13.00

All For \$10.00, No Discount

SOUTH MICHIGAN NURSERY

GEORGE STROMER

New Buffalo, Michigan