

GHQ/SCAP Records (RG 331, National Archives and Records Service)

Description of contents

- (1) Box no. 2939
- (2) Folder title/number: (9)
Kyowa Seisakusho - Miki Plant

(3) Date: May 1947

(4) Subject:

Classification	Type of record
9230, 9621	r

(5) Item description and comment:

Hyogo

(6) Reproduction: Yes No

(7) Film no.

Sheet no.

(Compiled by National Diet Library)

Kigowa Seisakusho
Miki Plant.

90

Seisakusho
Miki Plant.

Exemption Machine List

Code Number	Name of Machine	Manufacturer	Op
I	Engine Lathe	Unknown	
II	ditto	ditto	
III	ditto	ditto	
III	ditto	ditto	
V	Planer	ditto	
VI	Shaper	Hayashi. Kan	
VII	Drilling Machine, Upright,	Unknown	Max
VIII	Grinder	Toa Denda Kogy Seisakusho.	
IX	Mechanical Press, Friction Spindle	Unknown	
X	ditto	ditto	
XI	Mechanical Press, Inclinable	ditto	
XII	ditto	ditto	
XIII	ditto	ditto	
XIII	ditto	ditto	
XV	ditto	ditto	
XVI	ditto	ditto	
XVII	Engine Lathe	Katsu Hamada shoten	
XVIII	ditto	Yoshida Shokobu	
XIX	ditto	Osaka Seiki	
XX	Pipe Bending Machine for Bicycle	Unknown	
XVI	ditto	ditto	

Exemption Machine List

er	Name of Machine	Manufactururer	Operating Dimension	Location	Reason of exemption
	Engine Lathe	Unknown	10 ft.	Machine Shop	20. Dec. 1945. Purchased from Masuo Mega.
	ditto	ditto	8 ft.	ditto	ditto
	ditto	ditto	6 ft.	ditto	ditto
	ditto	ditto	6 ft.	ditto	ditto
	Planer	ditto	8 ft.	ditto	ditto
	Shaper	Hayashi, Kan	12 inch	ditto	ditto
	Drilling Machine, Upright,	Unknown	Max dia. of hole 30mm.	ditto	ditto
	Grinder	Toa Denda Kogyu Seisakusho.		ditto	ditto
	Mechanical Press, Friction Spindle,	Unknown	100 tons	ditto	10. Sep. 1945 Borrowed from Kansai Kinzoku
	ditto	ditto	75 tons	ditto	ditto
	Mechanical Press, Inclinable	ditto	25 tons	ditto	ditto
	ditto	ditto	15 tons	ditto	ditto
	ditto	ditto	10 tons	ditto	ditto
	ditto	ditto	10 tons	ditto	ditto
	ditto	ditto	10 tons	ditto	ditto
	ditto	ditto	7.5 tons	ditto	ditto
	Engine Lathe	Katsu Hamada shoten	8 ft	ditto	15 May 1946 Purchased from Uchiro Yabuuchi
	ditto	Yoshida Shokobu	6 ft	ditto	ditto
	ditto	Osaka Seiki	4 ft	ditto	ditto
	Pipe Bending Machine for Bicycle	Unknown	φ 22.2 m.m	ditto	ditto
	ditto	ditto	ditto	ditto	ditto

308

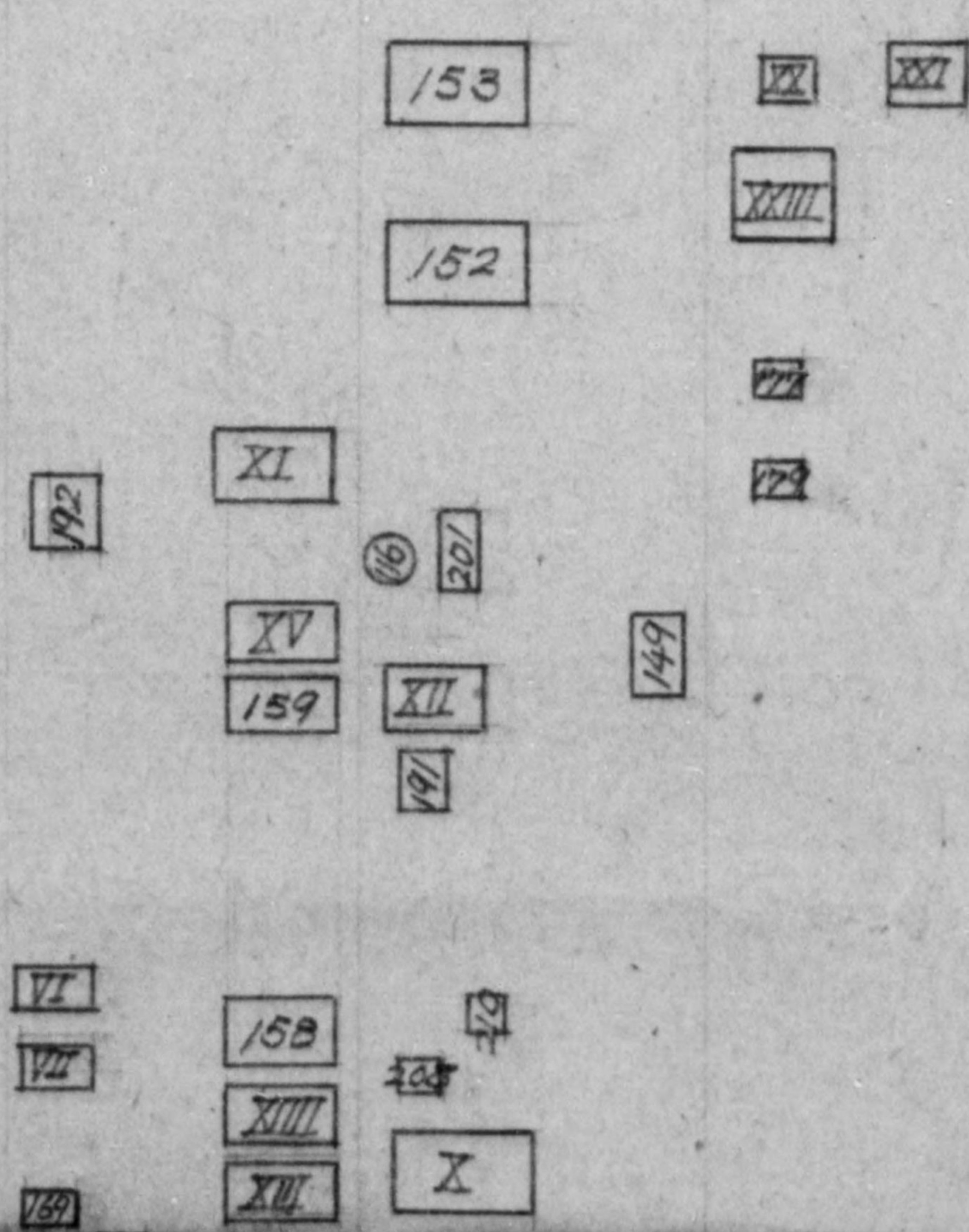
Location	Reason of exemption
Machine Shop	20. Dec. 1945. Purchased from Masuo Megaz.
ditto	ditto
ditto	ditto
ditto	ditto
ditto	ditto
ditto	ditto
ditto	ditto
ditto	10. Sep. 1945 Borrowed from Kansai Kinzoku
ditto	ditto
ditto	ditto
ditto	ditto
ditto	ditto
ditto	ditto
ditto	ditto
ditto	15 May 1946 Purchased from Uekihiro Yabuuchi
ditto	ditto
ditto	ditto
ditto	ditto
ditto	ditto

XV	ditto	ditto	10 tons
XVI	ditto	ditto	7.5 tons
XVII	Engine Lathe	Katsu Hamada shoten	8 ft
XVIII	ditto	Yoshida Shokobu	6 ft
XIX	ditto	Osaka Seiki	4 ft
XX	Pipe Bending Machine for Bicycle	Unknown	φ 22.2 m
XXI	ditto	ditto	ditto
XXII	Cover Sheet Forming Machine for Bicycle	ditto	width 100 m.
XXIII	Electric Furnance	Shumazu Seisakusho	60 KW

house.

Machine Shop

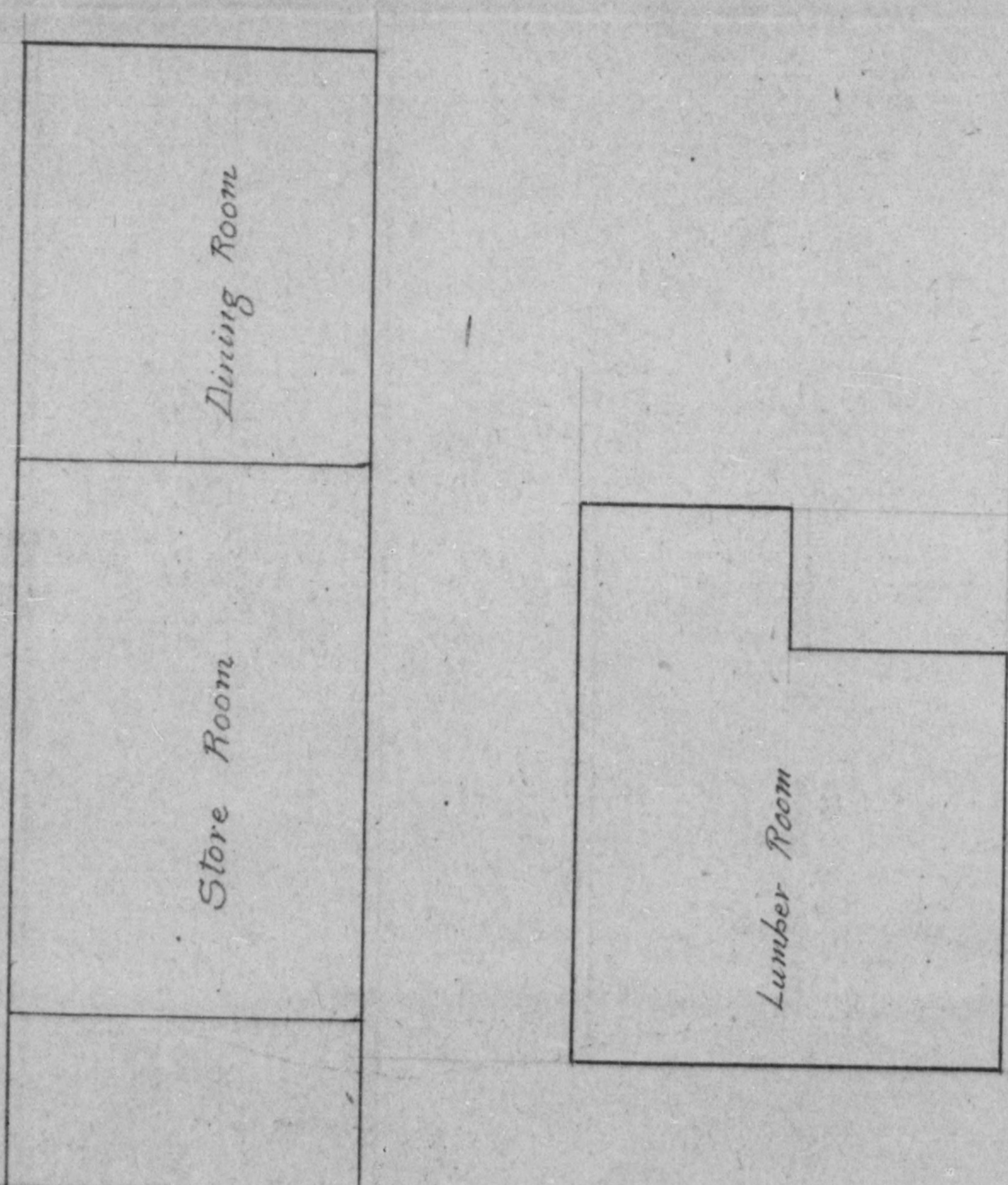
62, 64 ~ 85, 114 ~ 115, 132, 137 ~ 141, 144,
151, 154 ~ 156, 160 ~ 167, 181, 193, 200, 202
~ 206, I, V, IX, XXII



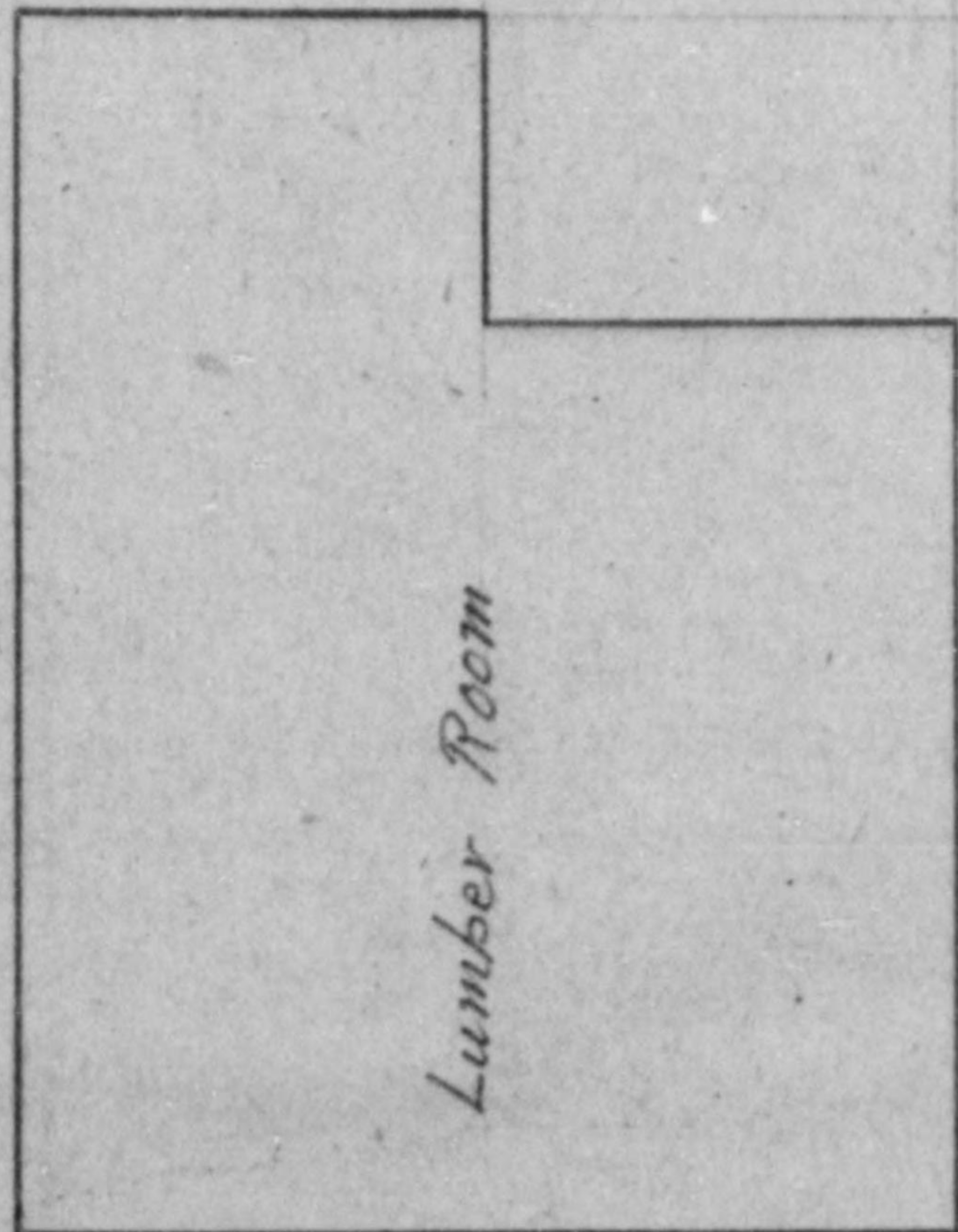
Dining Room

Store Room

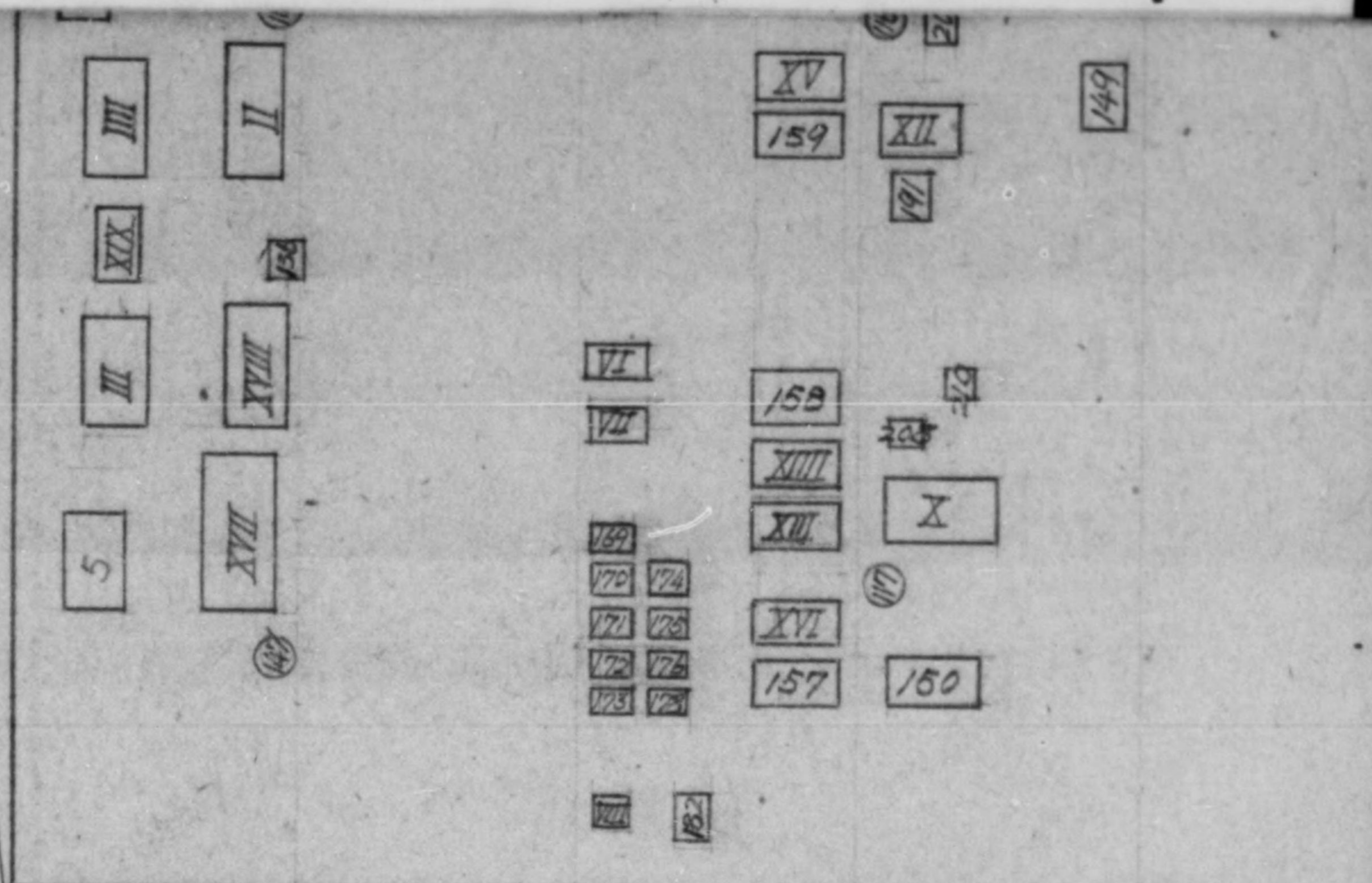
ditto	ditto	10 tons	ditto	ditto
ditto	ditto	7.5 tons	ditto	ditto
Engine Lathe	Katsu Hamada shoten	8 ft	ditto	15 May 1946 Purchased from Uekihiro Yabuuchi
ditto	Yoshida Shokobu	6 ft	ditto	ditto
ditto	Osaka Seiki	4 ft	ditto	ditto
Sheet Bending Machine for Bicycle	Unknown	φ 22.2 m.m.	ditto	ditto
ditto	ditto	ditto	ditto	ditto
Sheet Forming Machine for Bicycle	ditto	width 100 m.m.	ditto	ditto
Electric Furnance	Shumazu Seisakusho	60 KW	ditto	10 May 1946 Purchased from Shimazu.



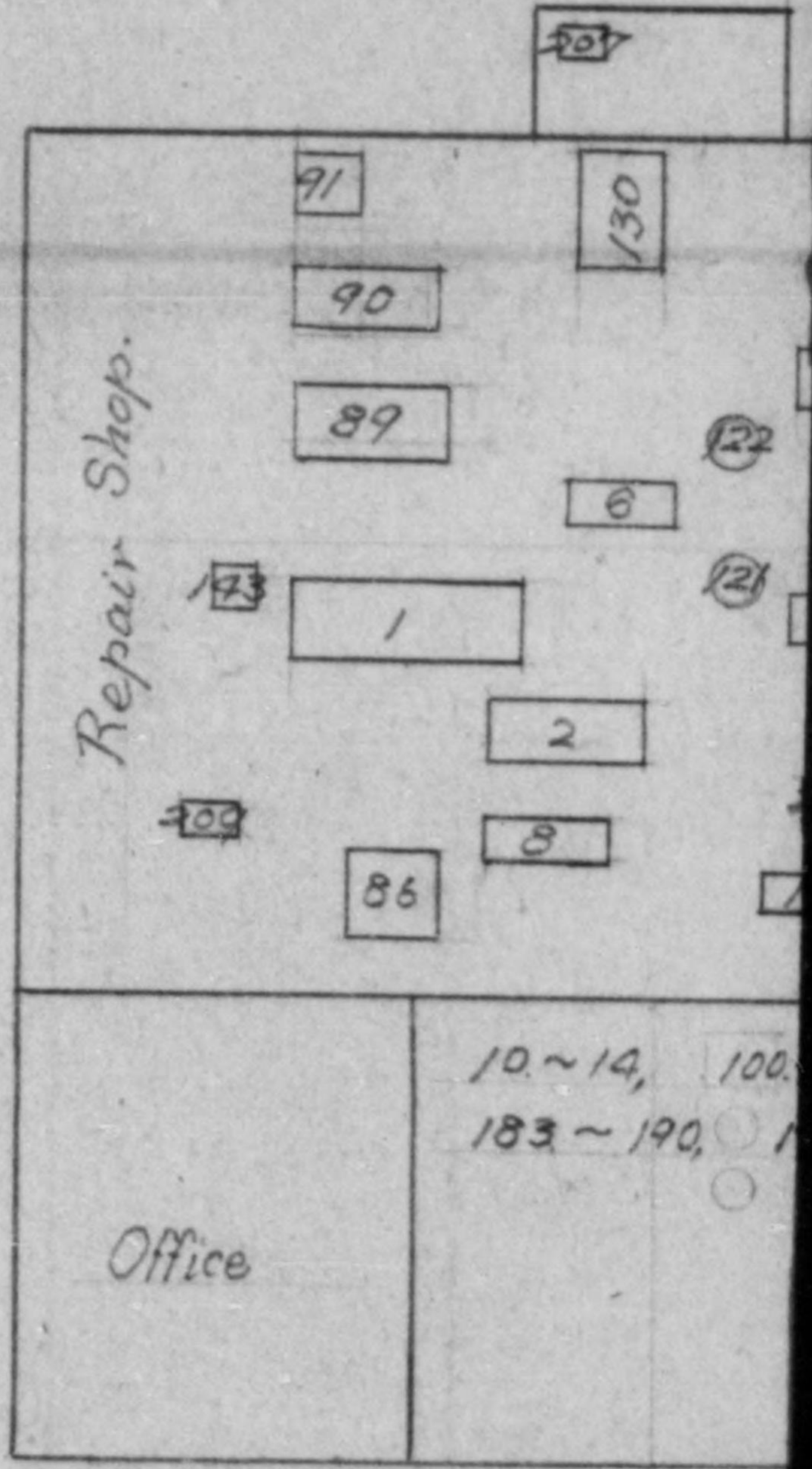
ONS	ditto	ditto
ONS	ditto	ditto
	ditto	15 May 1946 Purchased from Uichiro Yabuuchi
	ditto	ditto
	ditto	ditto
2 m.m	ditto	ditto
	ditto	ditto
m.m.	ditto	ditto
	ditto	10 May 1946 Purchased from Shimazu.

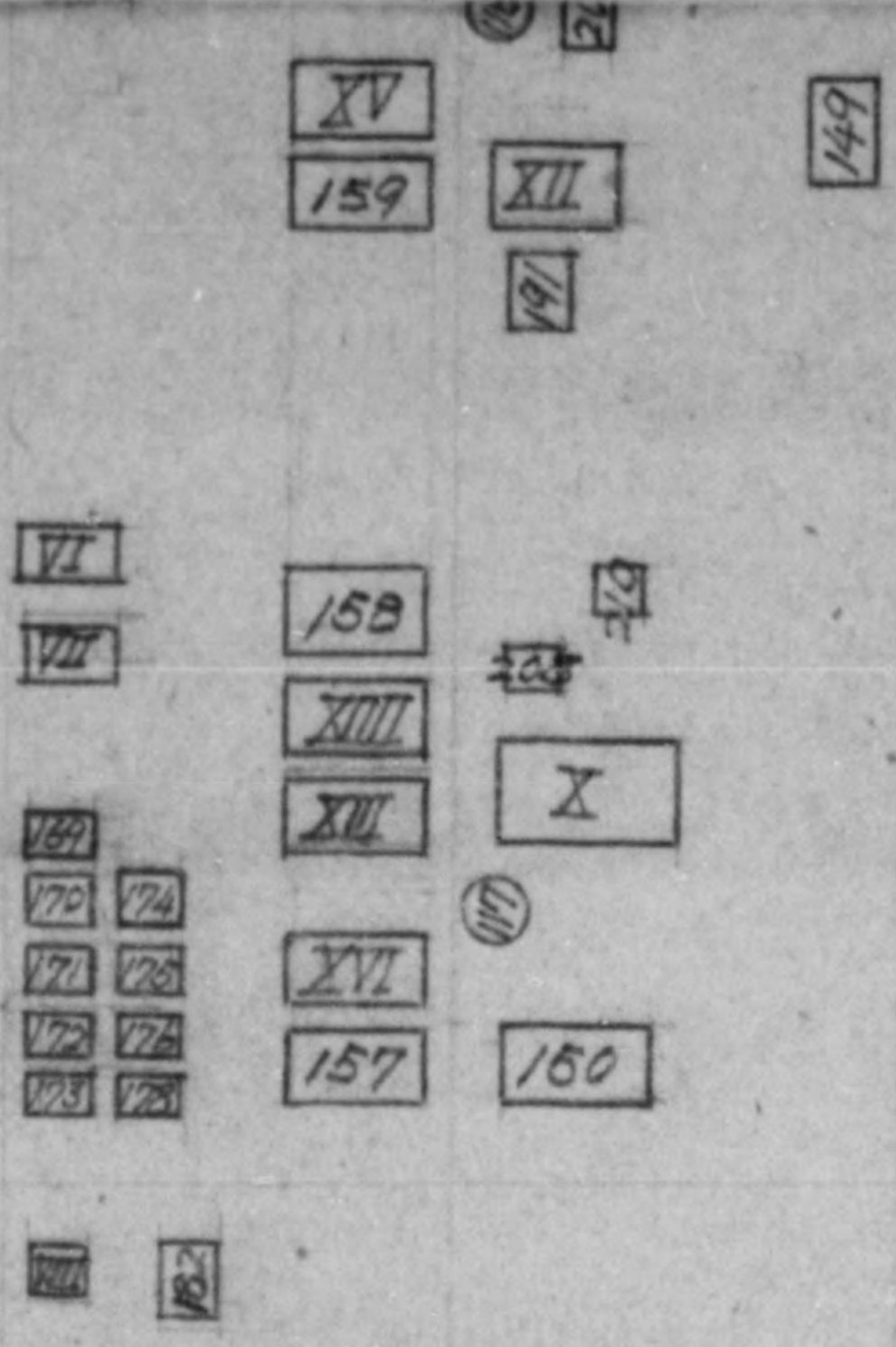


Brook.



Switch Board



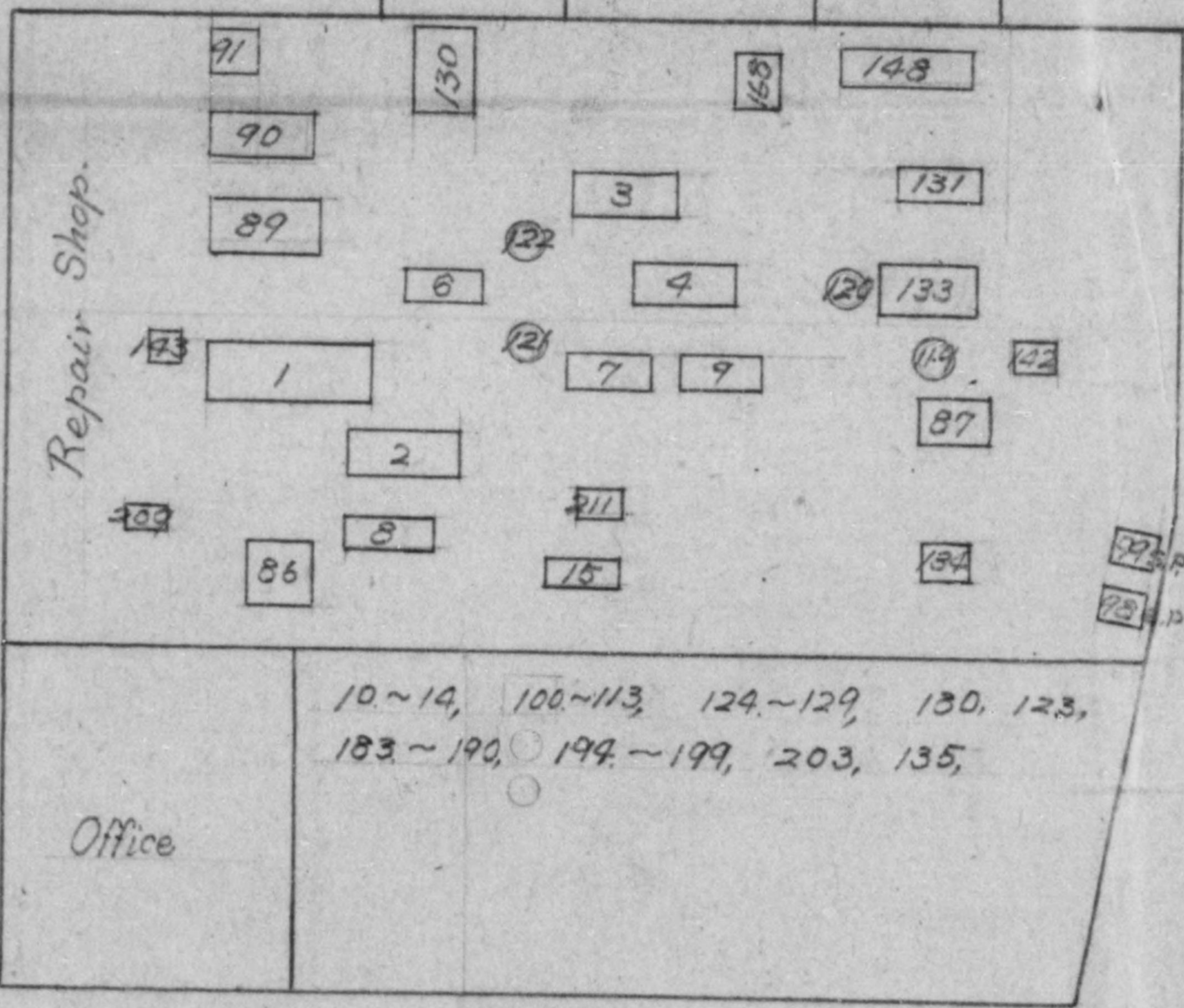


Store

Office

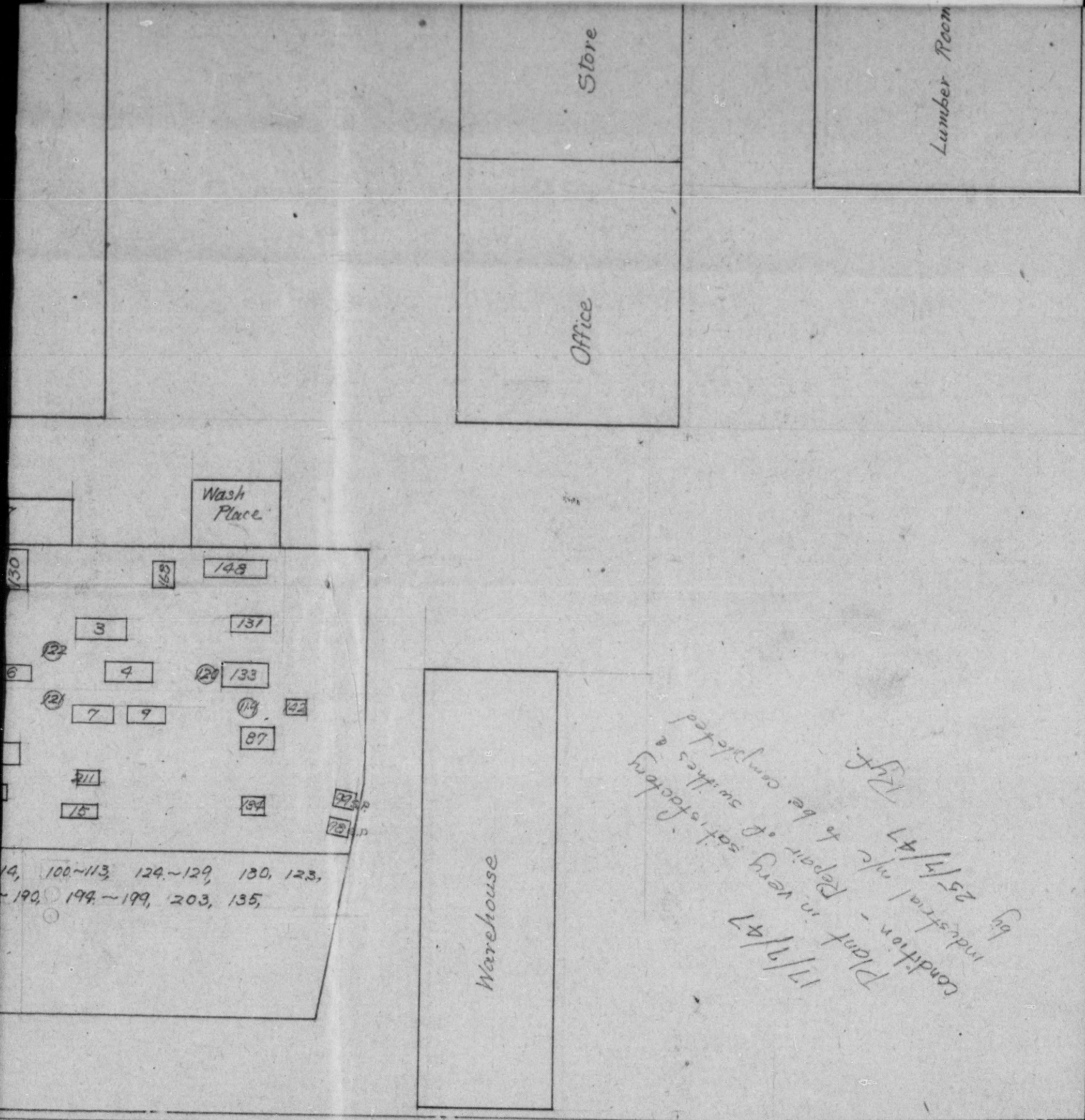
Switch Board

Wash Place



Warehouse

Street



17/9/47
 Plant in very satisfactory
 condition - Repair of switches &
 industrial m/c to be completed
 by 25/9/47
 R.F.

14, 100-113, 124-129, 130, 123,
 190, 194-199, 203, 135,

Street

Store

Lumber Room

Office

Warehouse

17/9/47
Plant in very satisfactory
condition - Repair of switches &
Industrial m/c to be completed
by 25/11/47 R.J.F.

Front
Entrance

Street

Br

Scale 1/200 24 May 47

