

~ 13
3702
5



門 へ 13
 號 3702
 卷 5

十二神
 カタ
 花
 あり
 あり

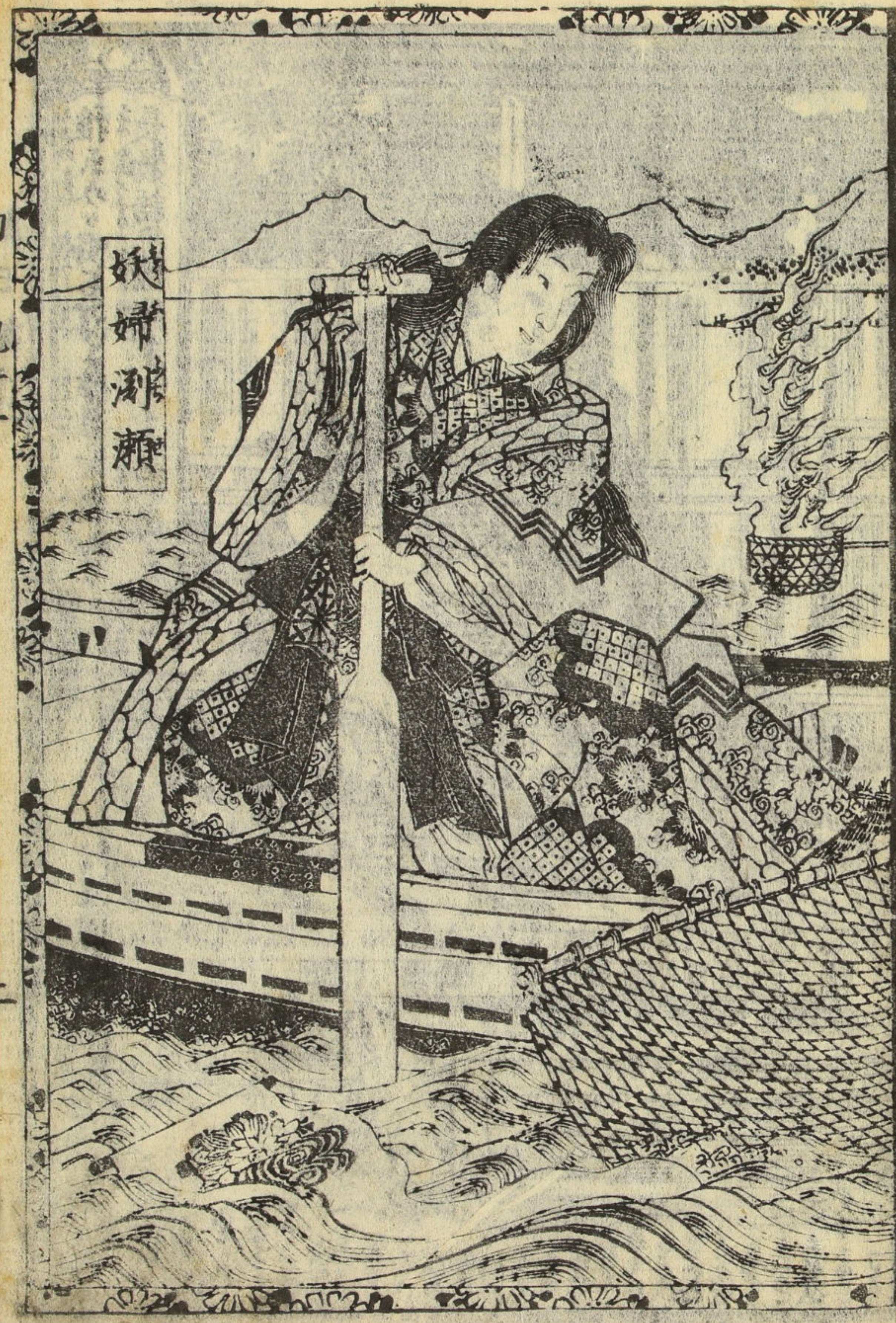


あり

大約稗史のうへに出せる人物のその中よ或の幹あり
 枝葉あり謂所門之助朝雪の本傳の幹ありその
 餘いまも枝葉あり余の朝雪の一期の支を編次するを
 貴目とすこれ今花園家の一段の如き央より一説出
 雅樂之文話語の裡に僅に往事を言ひたるあど忘る
 属の九三雙紙の例をから支るより十一編より當編より

跨ぐる程の長談あり宜しく前後を合せ看る

甲子孟春吉日
 為永春水記



妖婦湖瀬



男前之助朝雲

女日言十一



Handwritten text in a cursive script, likely a transcription of a play or a commentary on the scene. The text is arranged in vertical columns, starting from the top left and moving downwards.

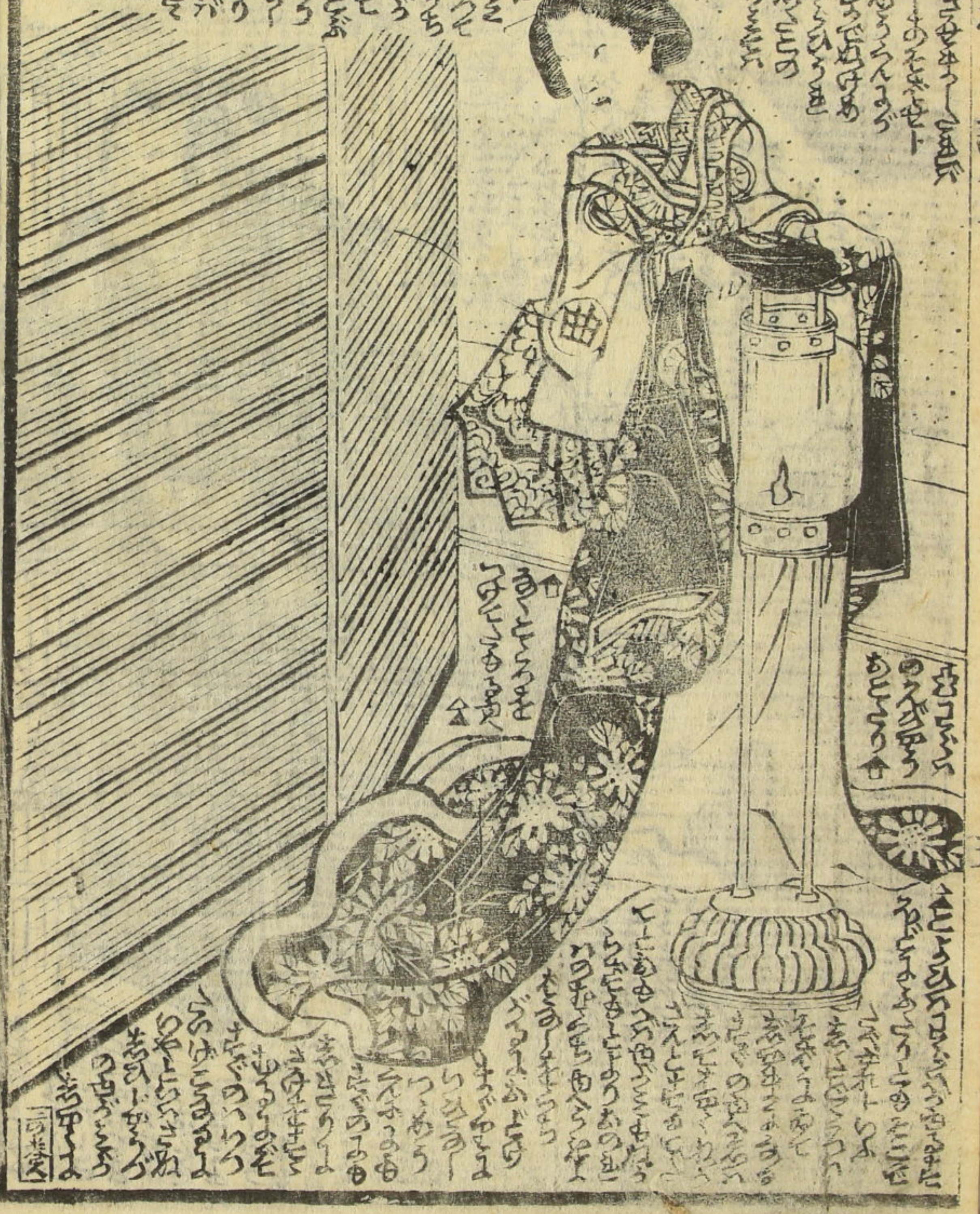
Handwritten text in a cursive script, continuing the transcription or commentary from the top section. It is positioned below the illustration and follows the same vertical layout.



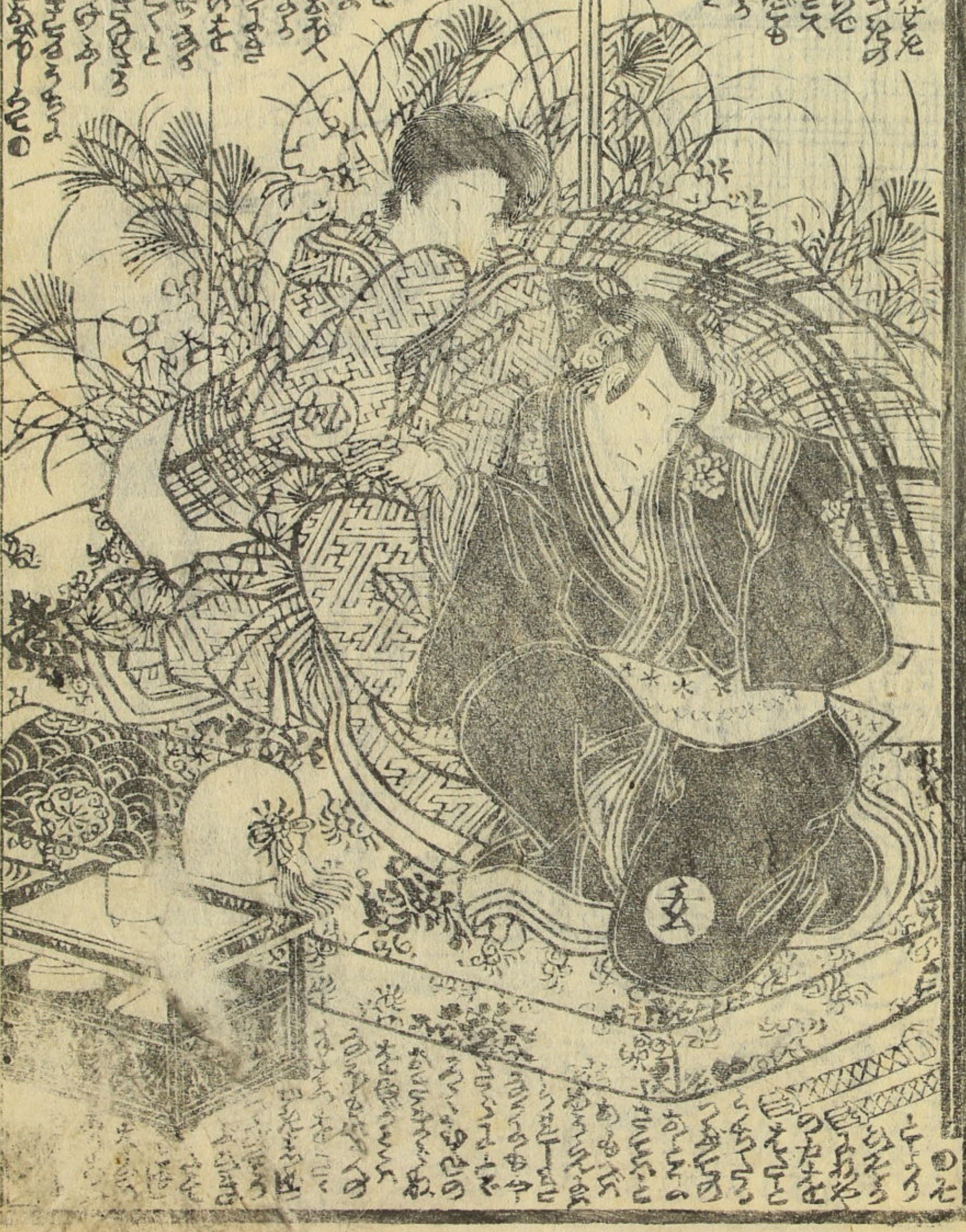
Handwritten text in a cursive script, positioned above the illustration. It appears to be a transcription of dialogue or a scene description.

Handwritten text in a cursive script, positioned below the illustration. It continues the transcription or commentary, following the vertical arrangement.

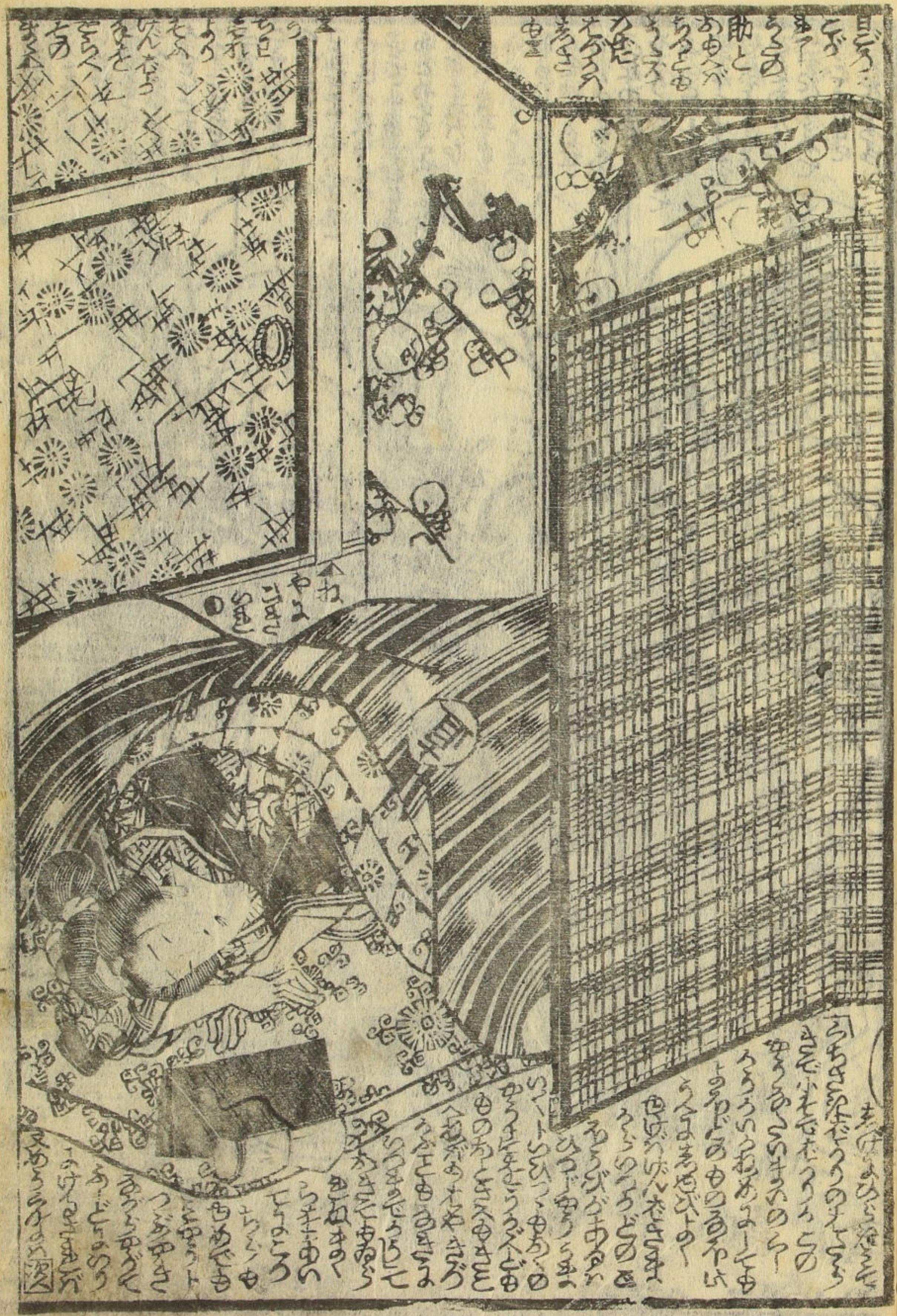
11
 12
 13
 14
 15
 16
 17
 18
 19
 20
 21
 22
 23
 24
 25
 26
 27
 28
 29
 30
 31
 32
 33
 34
 35
 36
 37
 38
 39
 40
 41
 42
 43
 44
 45
 46
 47
 48
 49
 50
 51
 52
 53
 54
 55
 56
 57
 58
 59
 60
 61
 62
 63
 64
 65
 66
 67
 68
 69
 70
 71
 72
 73
 74
 75
 76
 77
 78
 79
 80
 81
 82
 83
 84
 85
 86
 87
 88
 89
 90
 91
 92
 93
 94
 95
 96
 97
 98
 99
 100



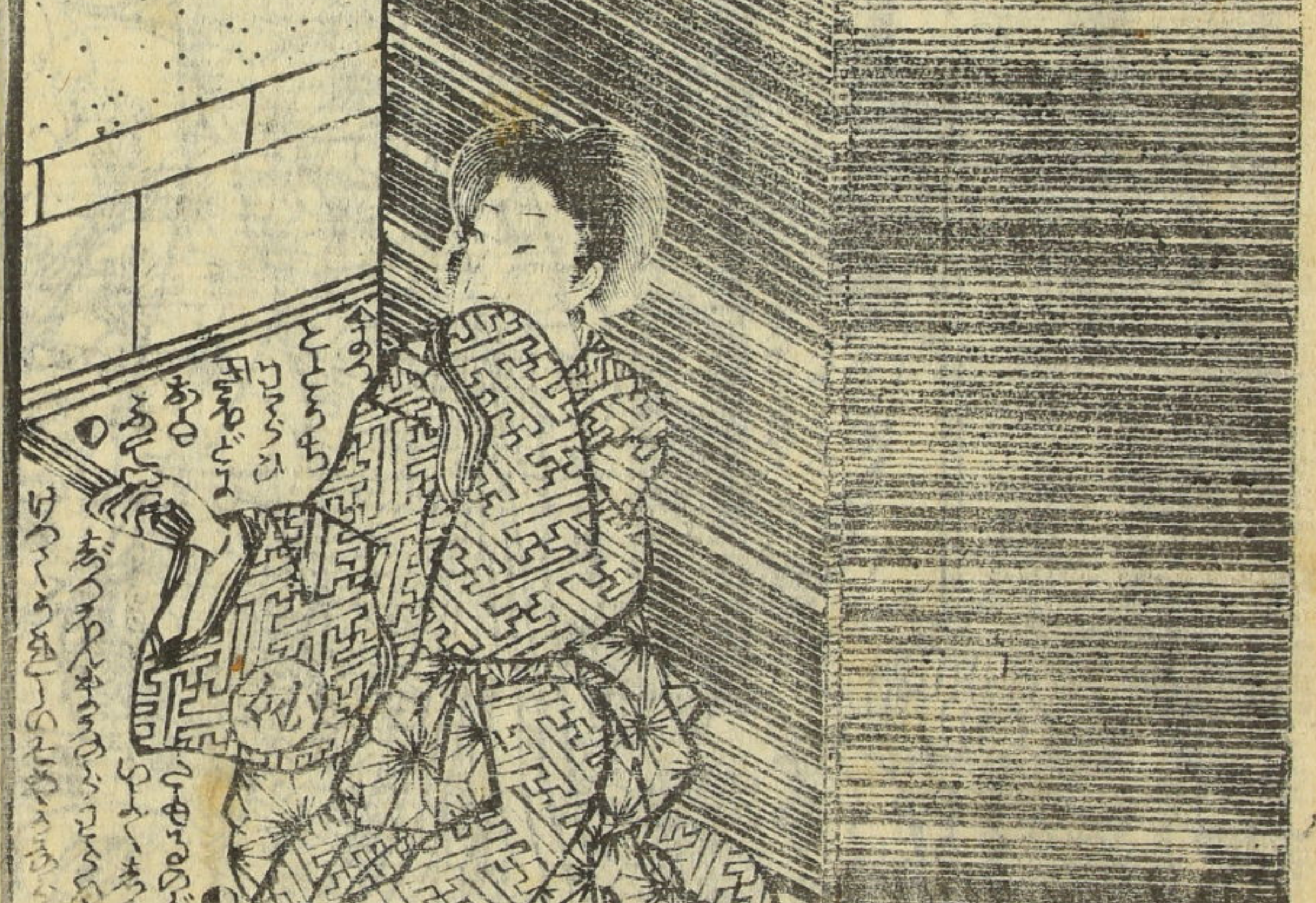
11
 12
 13
 14
 15
 16
 17
 18
 19
 20
 21
 22
 23
 24
 25
 26
 27
 28
 29
 30
 31
 32
 33
 34
 35
 36
 37
 38
 39
 40
 41
 42
 43
 44
 45
 46
 47
 48
 49
 50
 51
 52
 53
 54
 55
 56
 57
 58
 59
 60
 61
 62
 63
 64
 65
 66
 67
 68
 69
 70
 71
 72
 73
 74
 75
 76
 77
 78
 79
 80
 81
 82
 83
 84
 85
 86
 87
 88
 89
 90
 91
 92
 93
 94
 95
 96
 97
 98
 99
 100



11
 12
 13
 14
 15
 16
 17
 18
 19
 20
 21
 22
 23
 24
 25
 26
 27
 28
 29
 30
 31
 32
 33
 34
 35
 36
 37
 38
 39
 40
 41
 42
 43
 44
 45
 46
 47
 48
 49
 50
 51
 52
 53
 54
 55
 56
 57
 58
 59
 60
 61
 62
 63
 64
 65
 66
 67
 68
 69
 70
 71
 72
 73
 74
 75
 76
 77
 78
 79
 80
 81
 82
 83
 84
 85
 86
 87
 88
 89
 90
 91
 92
 93
 94
 95
 96
 97
 98
 99
 100

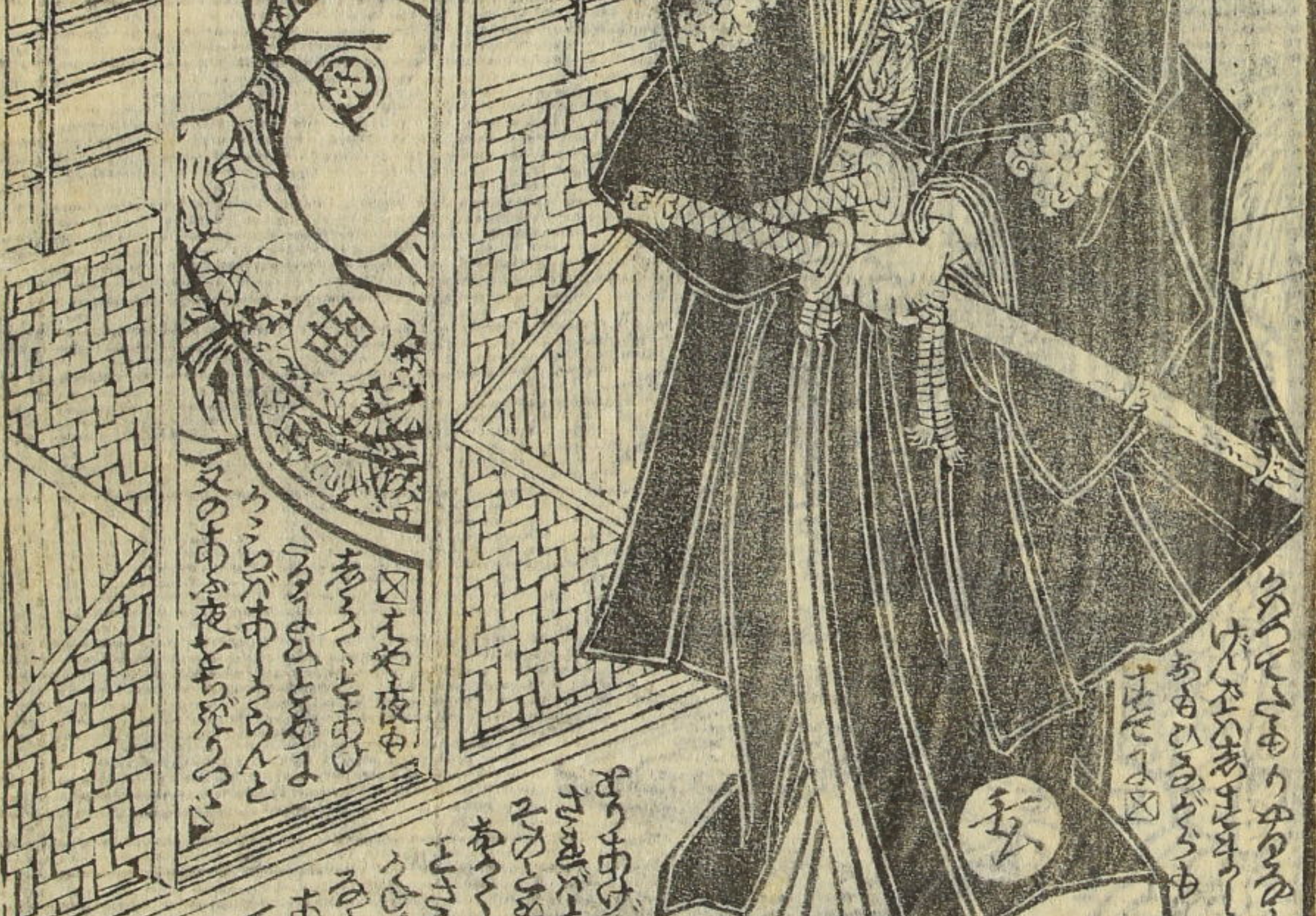


Handwritten text in a cursive script, likely a form of shorthand or a specific dialect, located at the top of the right page.



Handwritten text in a cursive script, located at the bottom of the right page, below the illustration.

Handwritten text in a cursive script, located at the top of the left page.



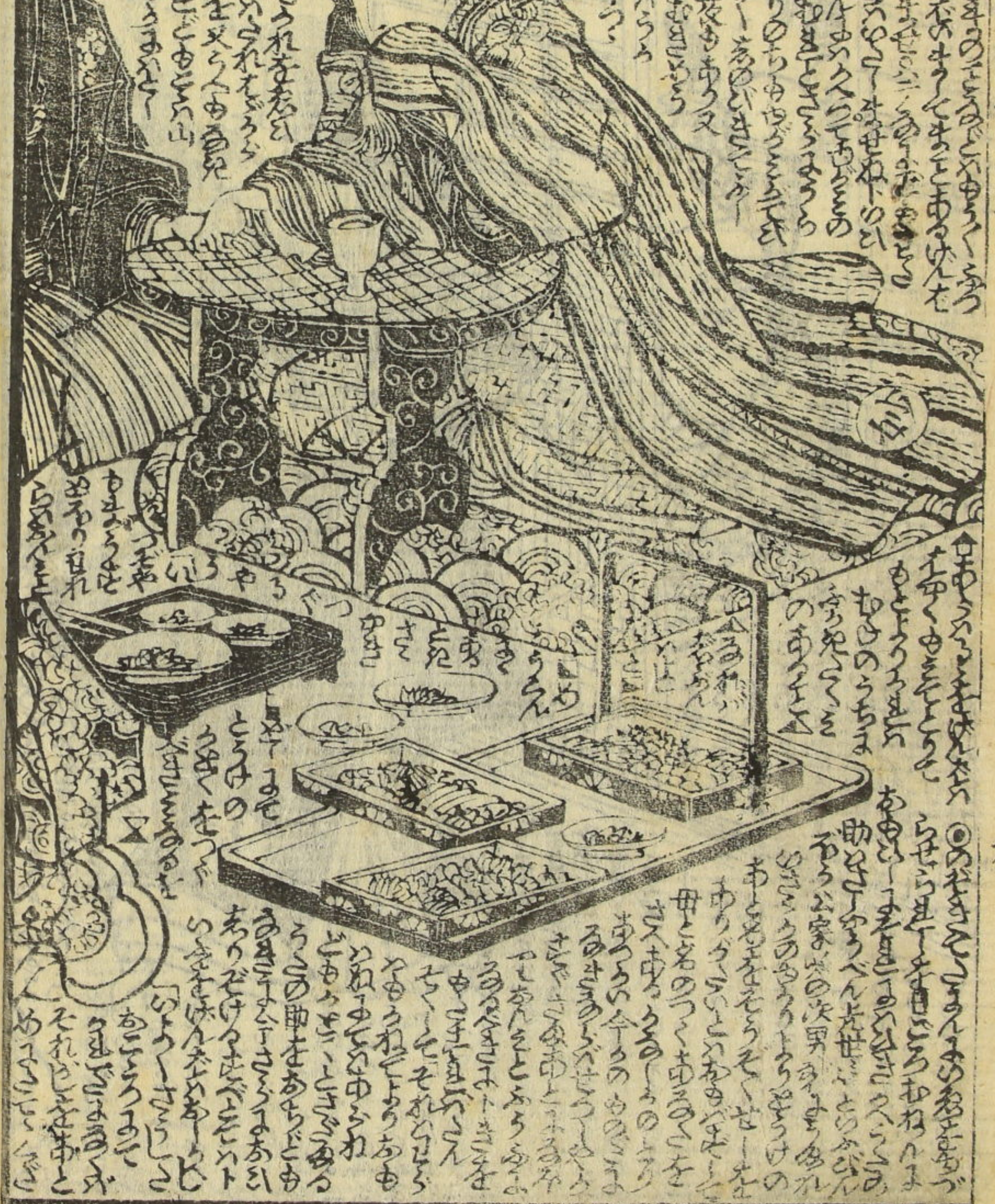
Handwritten text in a cursive script, located at the bottom of the left page, below the illustration.

Handwritten text in the top left corner of the left page, including the characters "江戸" (Edo) and "浮世草子" (Ukiyokosho).



Vertical text on the left margin of the left page.

Handwritten text in the top left corner of the right page.



Vertical text on the right margin of the right page.

